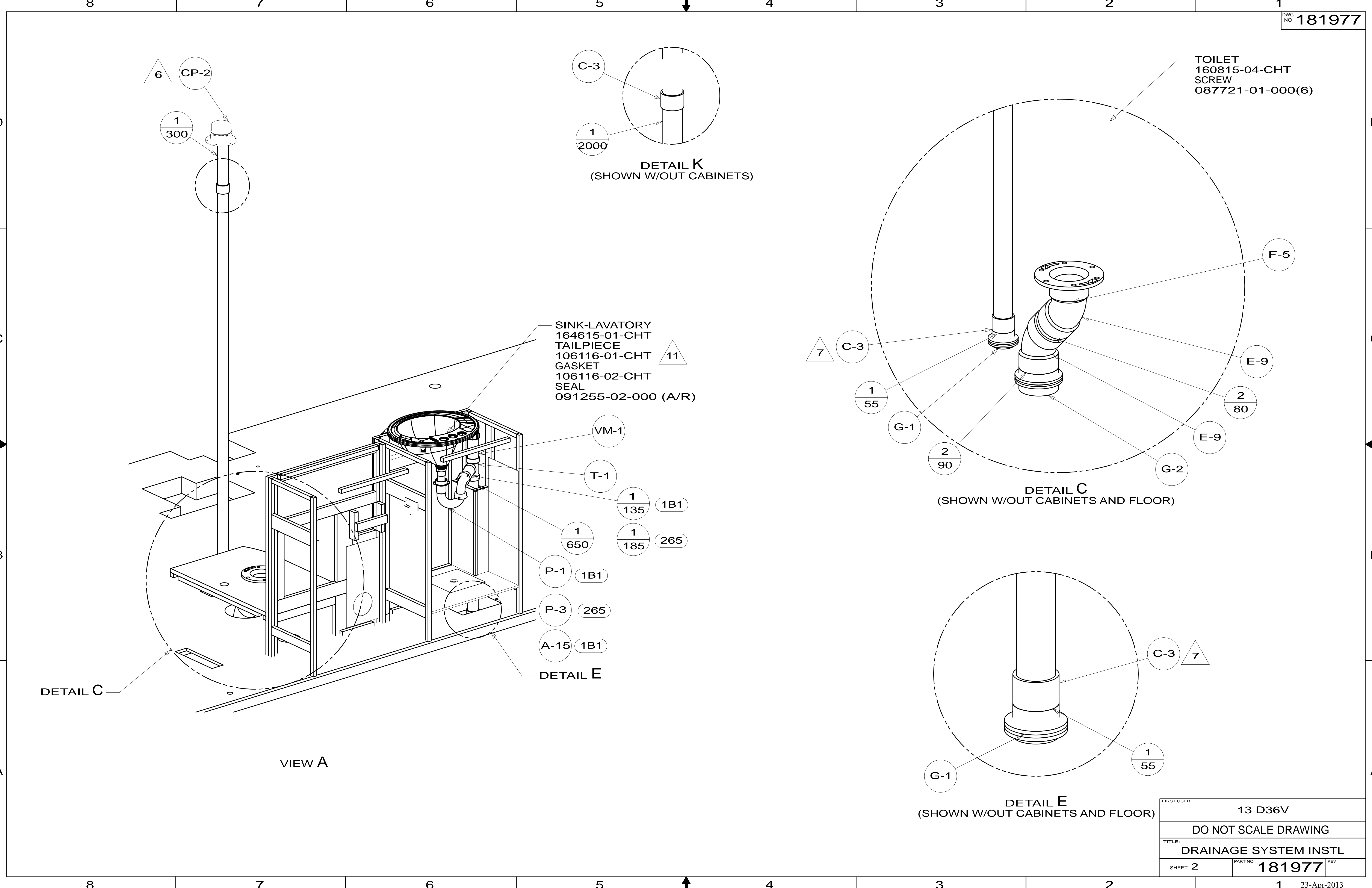


- NOTES:
1. SLOPE OF HORIZONTAL PIPING TO BE MINIMUM OF 3 PER 305 mm.
  2. SLOPE OF TRAP ARM MUST BE 6 PER 305 mm.
  3. ALL PIPE AND FITTINGS TO BE ASSEMBLED WITH SOLVENT 004020-01-000 (USA), 004020-02-000 (CAN)
  4. GLUE FITTING AFTER CABINET IS INSTALLED.
  5. SEAL AROUND SHOWER WITH SILICONE.
  6. VENT PIPE MUST PROJECT 51 MIN AND 64 MAX ABOVE ROOF FOR PROPER FIT AND FUNCTION. ADD S-1 (116666-01-CHT SEAL-VENT CAP) AROUND PIPE ON ROOF BEFORE VENT CAP IS INSTALLED.
  7. SECURE VENT PIPE TO FLOOR WITH CLAMP 062401-02-000 (2), SCREW 000G67-10-12U (2), BRACKET 136878-01-CHT (2).
  8. SECURE DRAINAGE PIPES TO CABINET USING WIRE TIE 108046-02-000, AND SCREW 000G67-10-12U AT INTERVALS OF NOT OF NOT MORE THAN 4 FEET APART.
  9. APPLY PRIMER 126427-02-000 AND CEMENT 126427-01-000 BETWEEN ELBOW AND FLEX PIPE.
  10. ATTACH TANK BRACKET TO RISER.
  11. USE SMOOTH PLUMBERS PUTTY 167459-01-000 TO SEAL STRAINER (0.2 PER STRAINER).

- 1B1 CODES/STANDARDS USA
- 265 CODES/STANDARDS-CSA/CMVSS

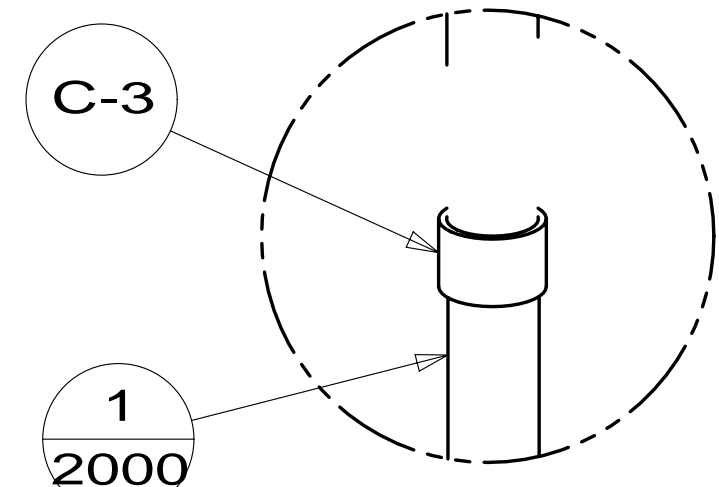
|                              |            |  |     |
|------------------------------|------------|--|-----|
|                              |            | COPYRIGHT 2013<br>WINNEBAGO<br>INDUSTRIES, INC.    |     |
| DTR                          | ORIG. DATE | ALL DIMENSIONS ARE IN MILLIMETERS                  |     |
| CHKR                         |            |  |     |
| P.E.                         |            |  |     |
| M.E.                         | FIRST USED | 13 D36V  |     |
| DSNR                         |            |  |     |
| UNSPECIFIED TOLERANCES ARE:  |            | MATERIAL:  |     |
| WHOLE DIM (X)                | : 3        |  |     |
| ONE-PLACE (X.X)              | :          |  |     |
| TWO-PLACE (X.XX)             | :          |  |     |
| ANGLE                        | :          |  |     |
| THIRD ANGLE PROJECTION       |            |  |     |
| DO NOT SCALE DRAWING         |            | REFER TO ES0018 FOR FASTENER TIGHTENING GUIDELINES |     |
| TITLE: DRAINAGE SYSTEM INSTL |            |  |     |
| SHEET 1 OF 4                 | PART NO    | 181977   | REV |
| REF:                         | 1          | 23-Apr-2013  |     |

FOR DRAINAGE CALLOUTS SEE DWG NO 116229-01-000



6 CP-2

1  
300



1  
2000

TOILET  
160815-04-CHT  
SCREW  
087721-01-000(6)

SINK-LAVATORY  
164615-01-CHT  
TAILPIECE  
106116-01-CHT  
GASKET  
106116-02-CHT  
SEAL  
091255-02-000 (A/R)

11

VM-1

T-1

1  
135 1B1

1  
650 1  
185 265

P-1 1B1

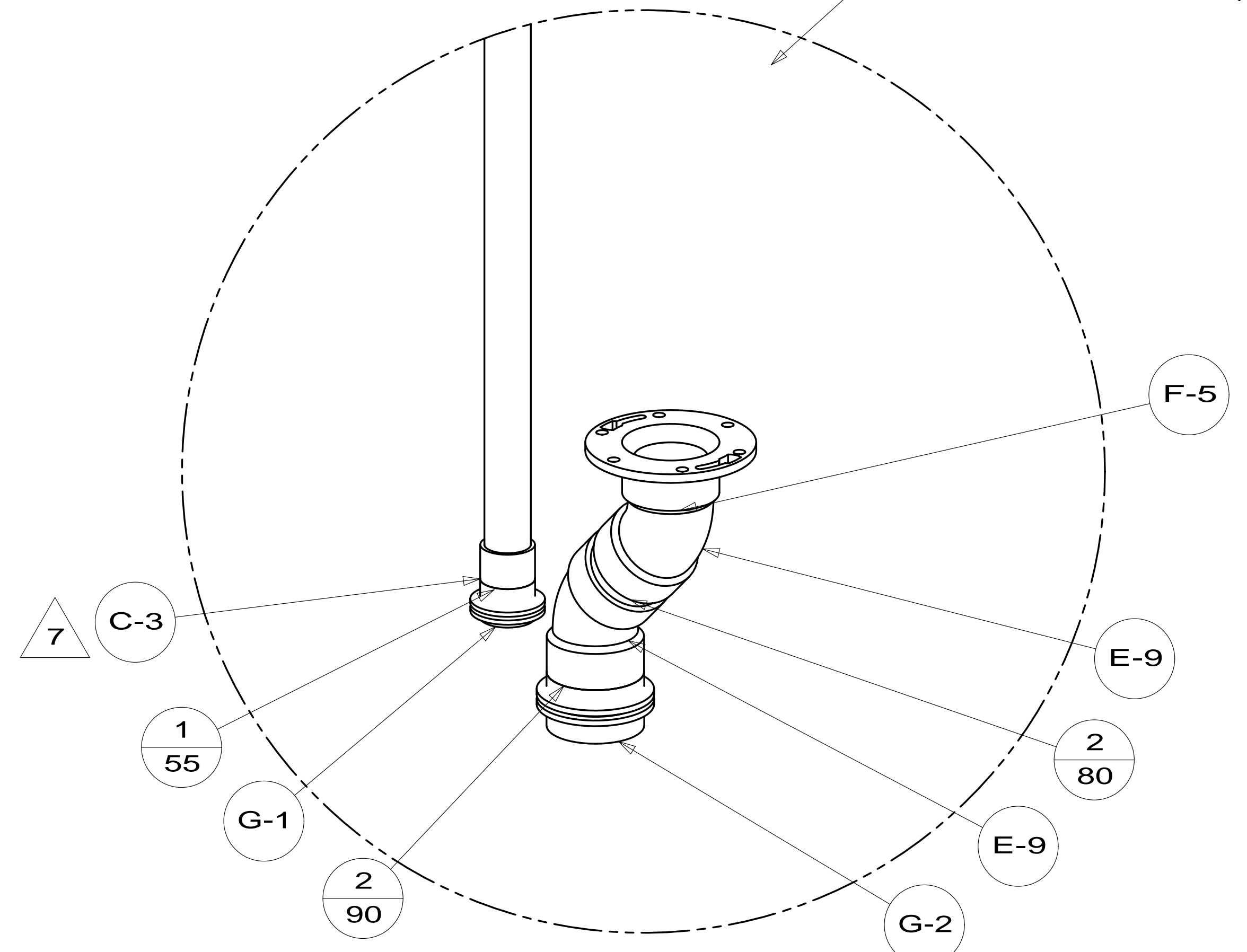
P-3 265

A-15 1B1

DETAIL E

DETAIL C

VIEW A



F-5

E-9

2  
80

E-9

G-2

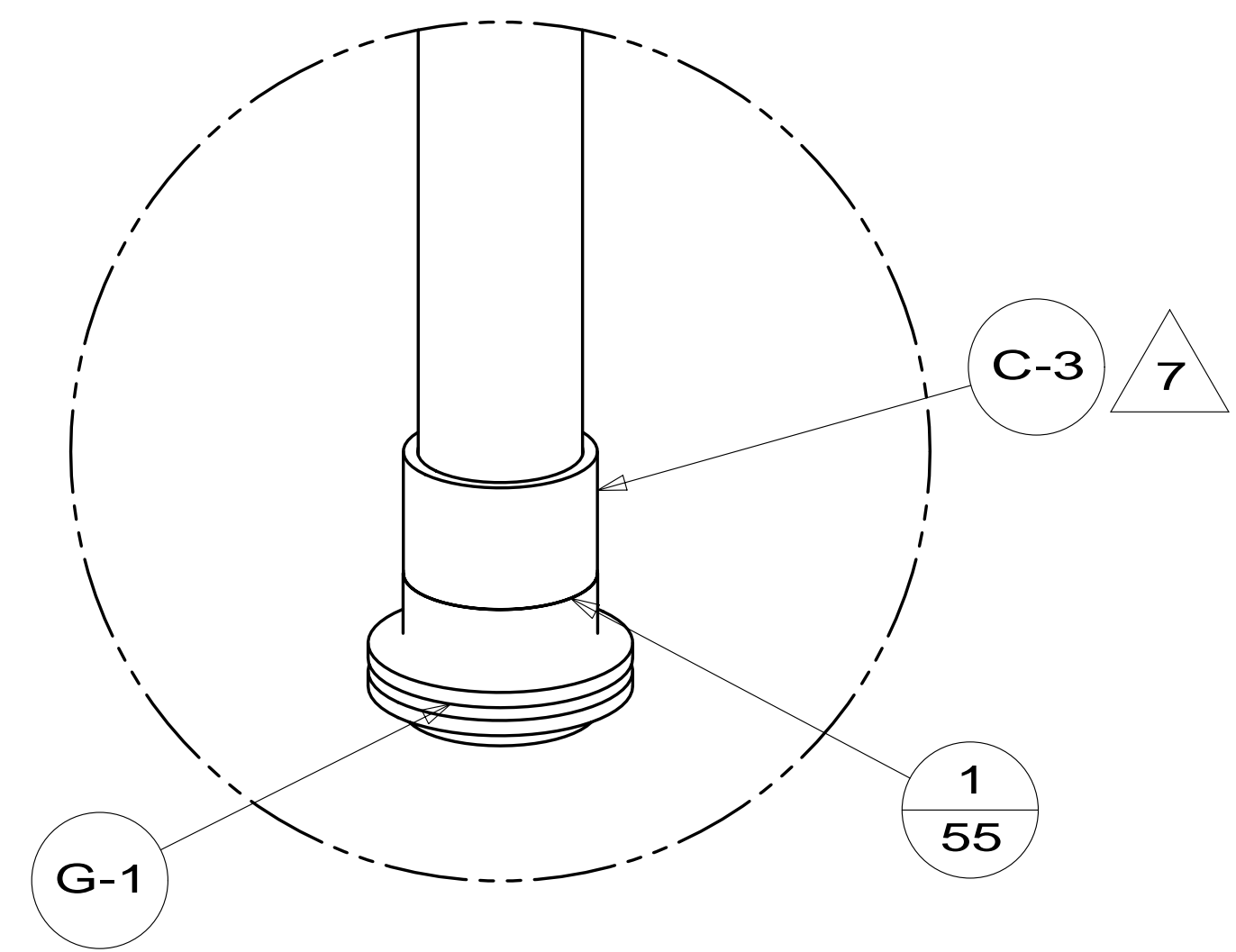
2  
90

G-1

1  
55

7 C-3

DETAIL C  
(SHOWN W/OUT CABINETS AND FLOOR)



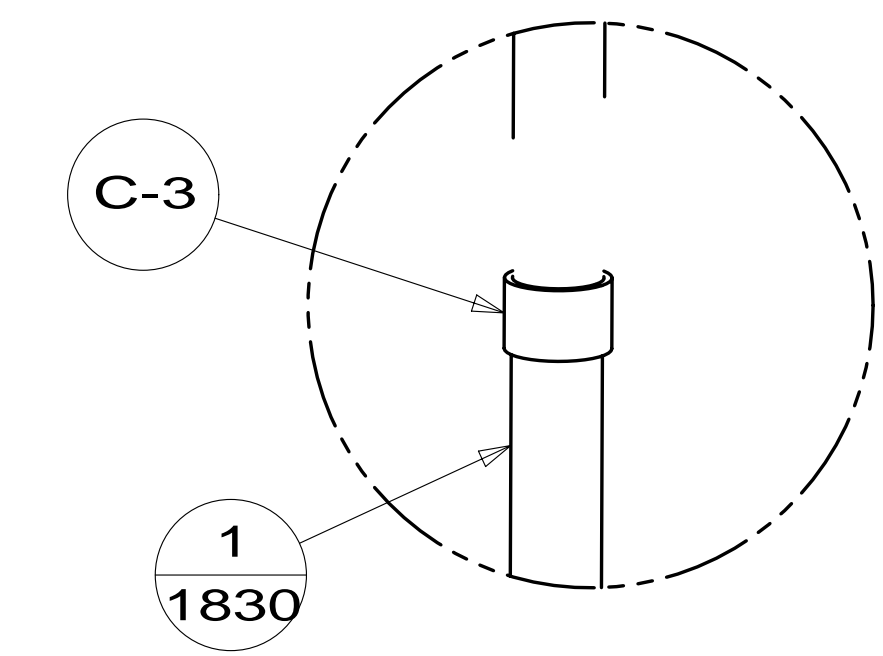
C-3 7

1  
55

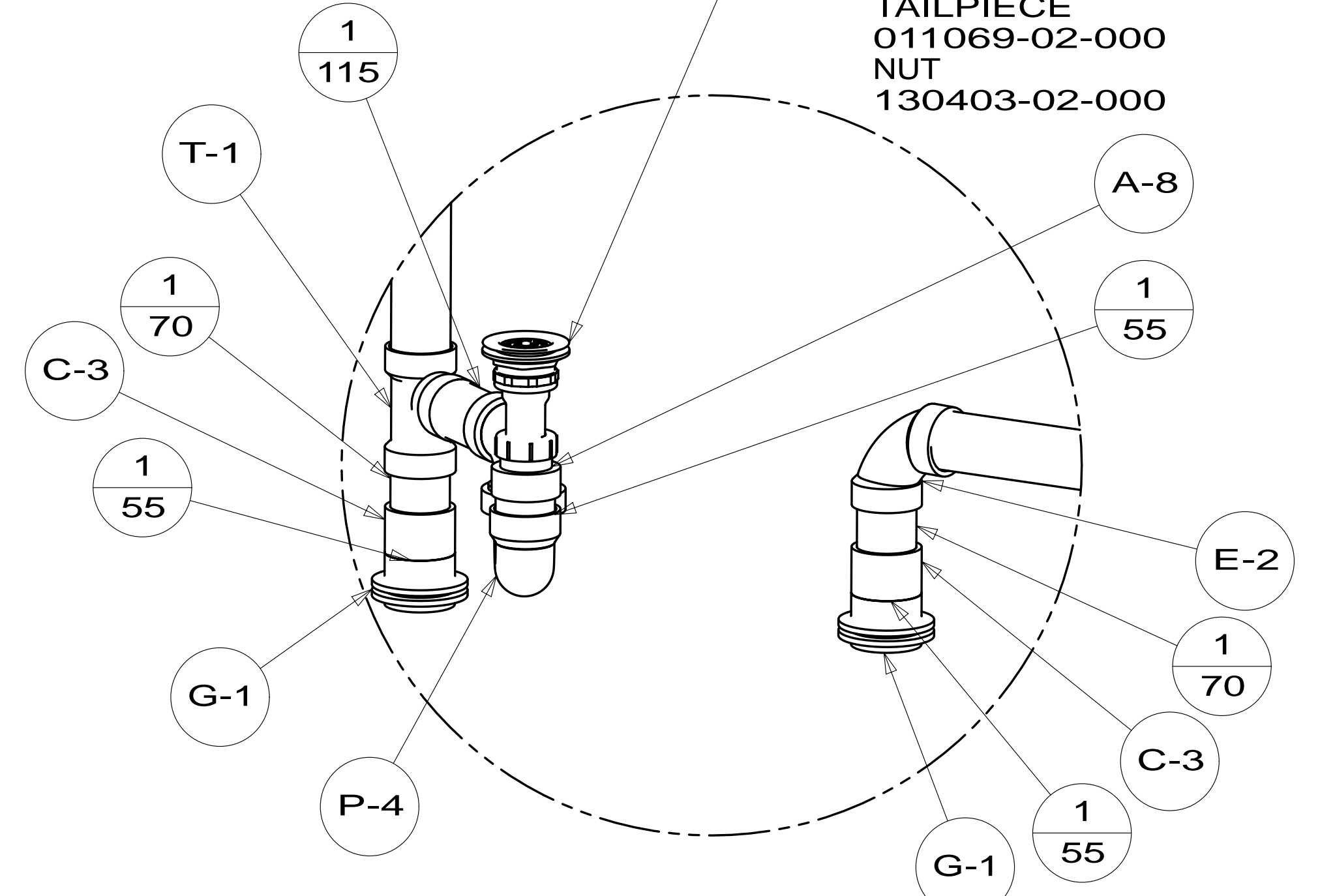
G-1

|                              |                |             |
|------------------------------|----------------|-------------|
| FIRST USED                   | 13 D36V        |             |
| DO NOT SCALE DRAWING         |                |             |
| TITLE: DRAINAGE SYSTEM INSTL |                |             |
| SHEET 2                      | PART NO 181977 | REV         |
|                              |                | 23-Apr-2013 |

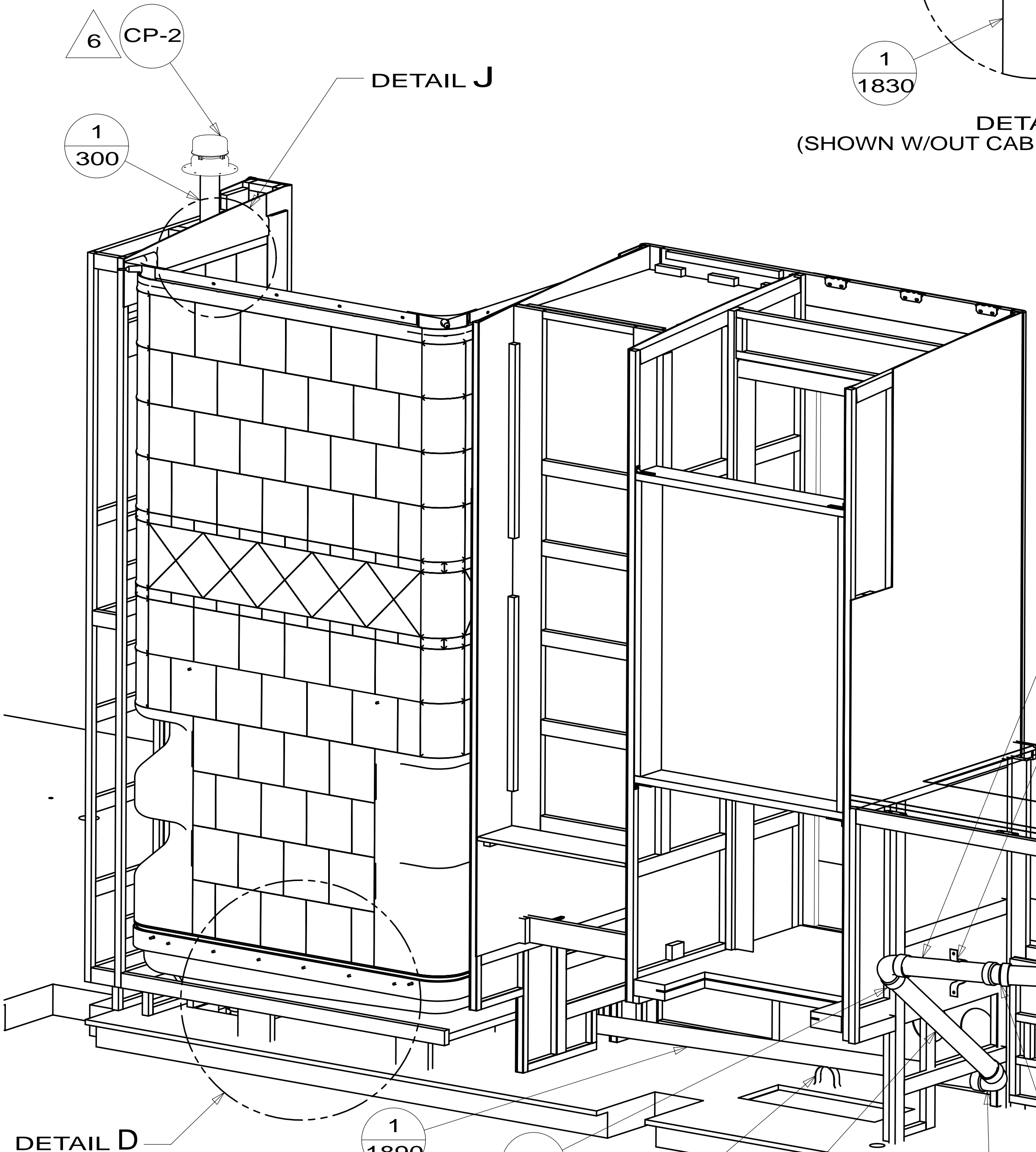
- SHOWER INSTL 164684-03-000
- STRAINER 066440-01-000
- SEALER 069640-01-000
- WASHER-RUBBER 127440-02-CHT
- TAILPIECE 011069-02-000
- NUT 130403-02-000



DETAIL J  
(SHOWN W/OUT CABINETS AND SHOWER)



DETAIL D  
(SHOWN W/OUT CABINETS AND FLOOR)



DETAIL D

STRAP-CONDUIT  
008406-01-000

1  
540

1  
295

STRAP-CONDUIT  
008406-01-000

1  
160

265

1  
60

1B1

- SINK-SMC, DBL L/S BASIN 184806-01-CHT (US/CAN)
- STRAINER 092303-01-000 (2)  $\Delta$  11
- BRACKET & SCREW 140002-01-CHT (8)
- SEAL 091255-03-000 (2130)

W-2

P-1 1B1

P-3 265

A-15 1B1

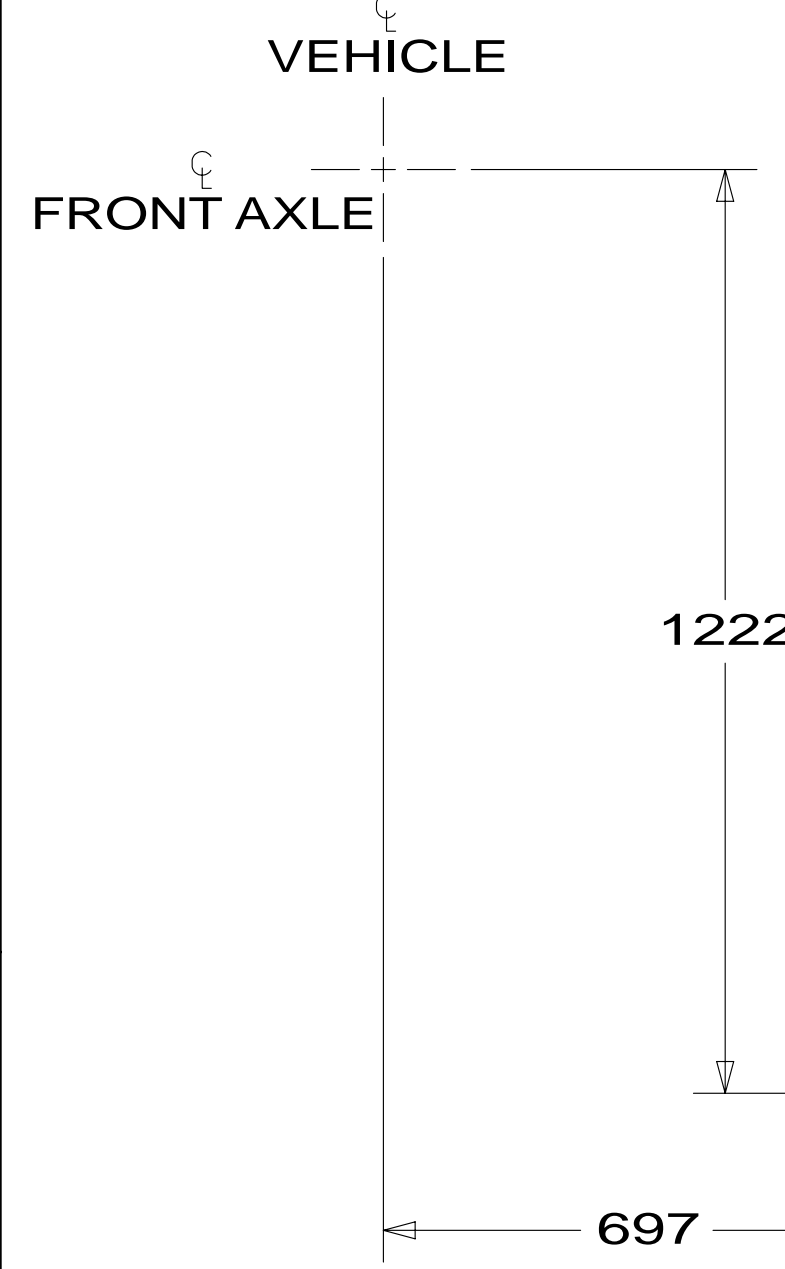
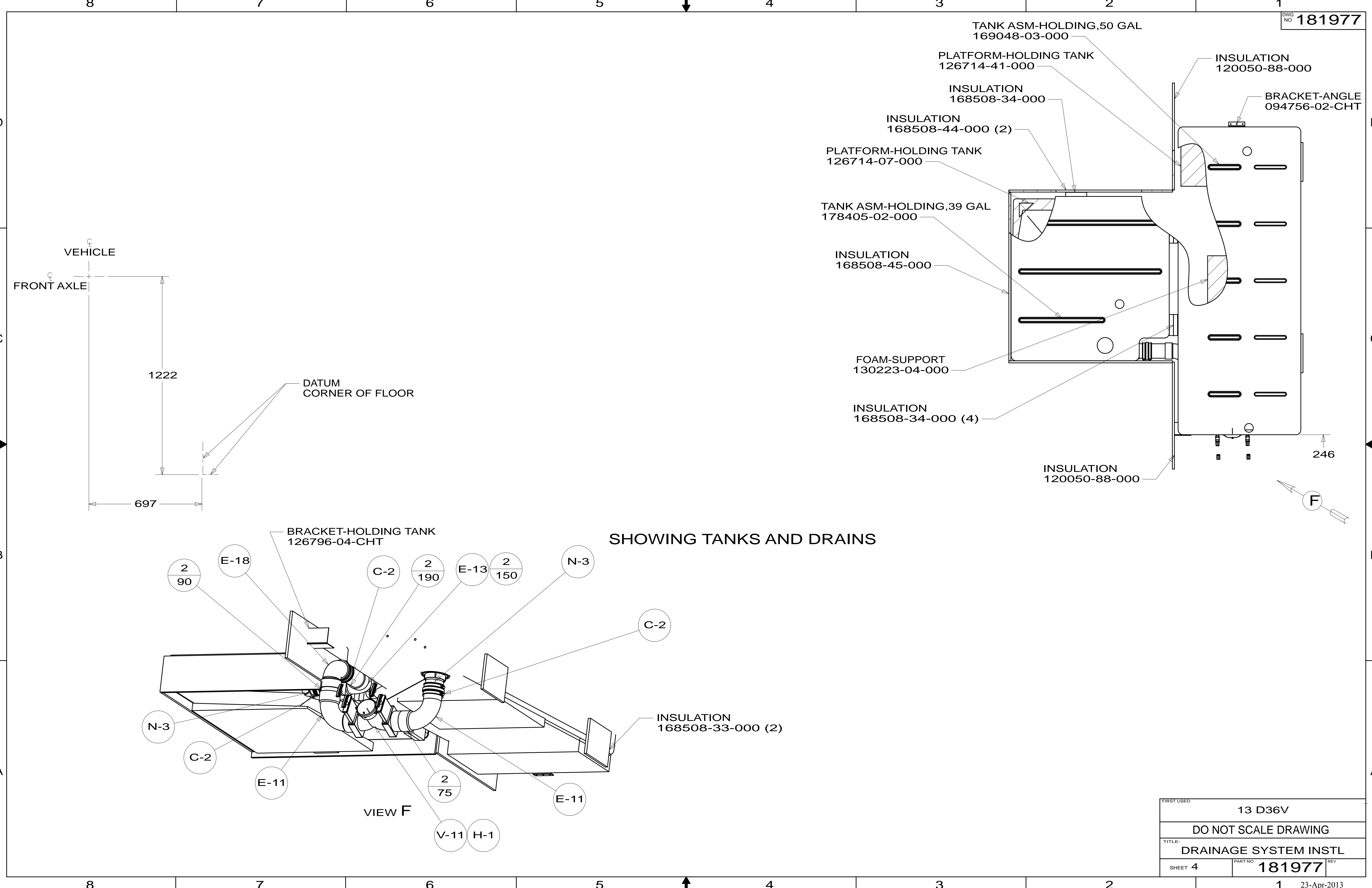
VIEW B

1  
585

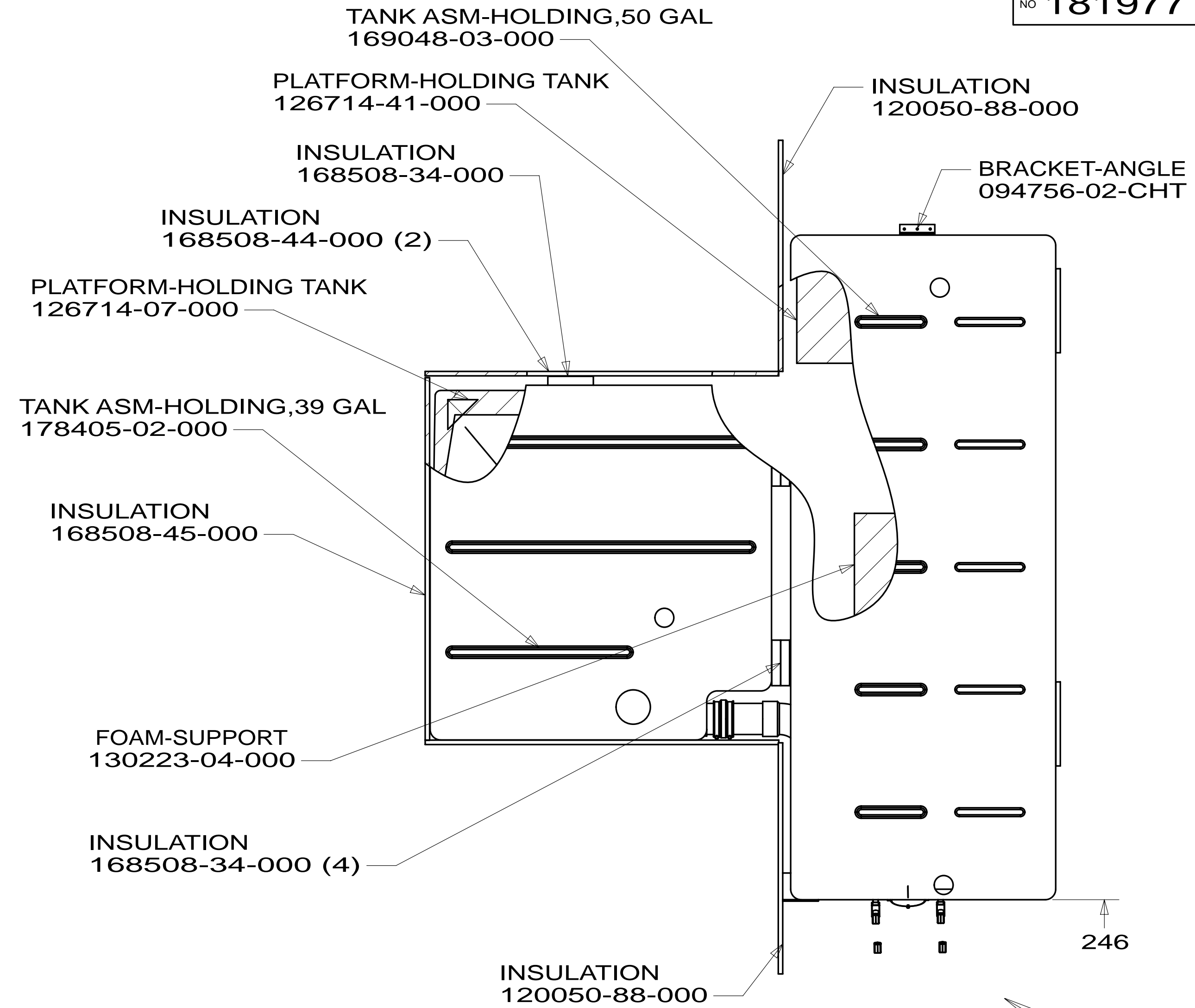
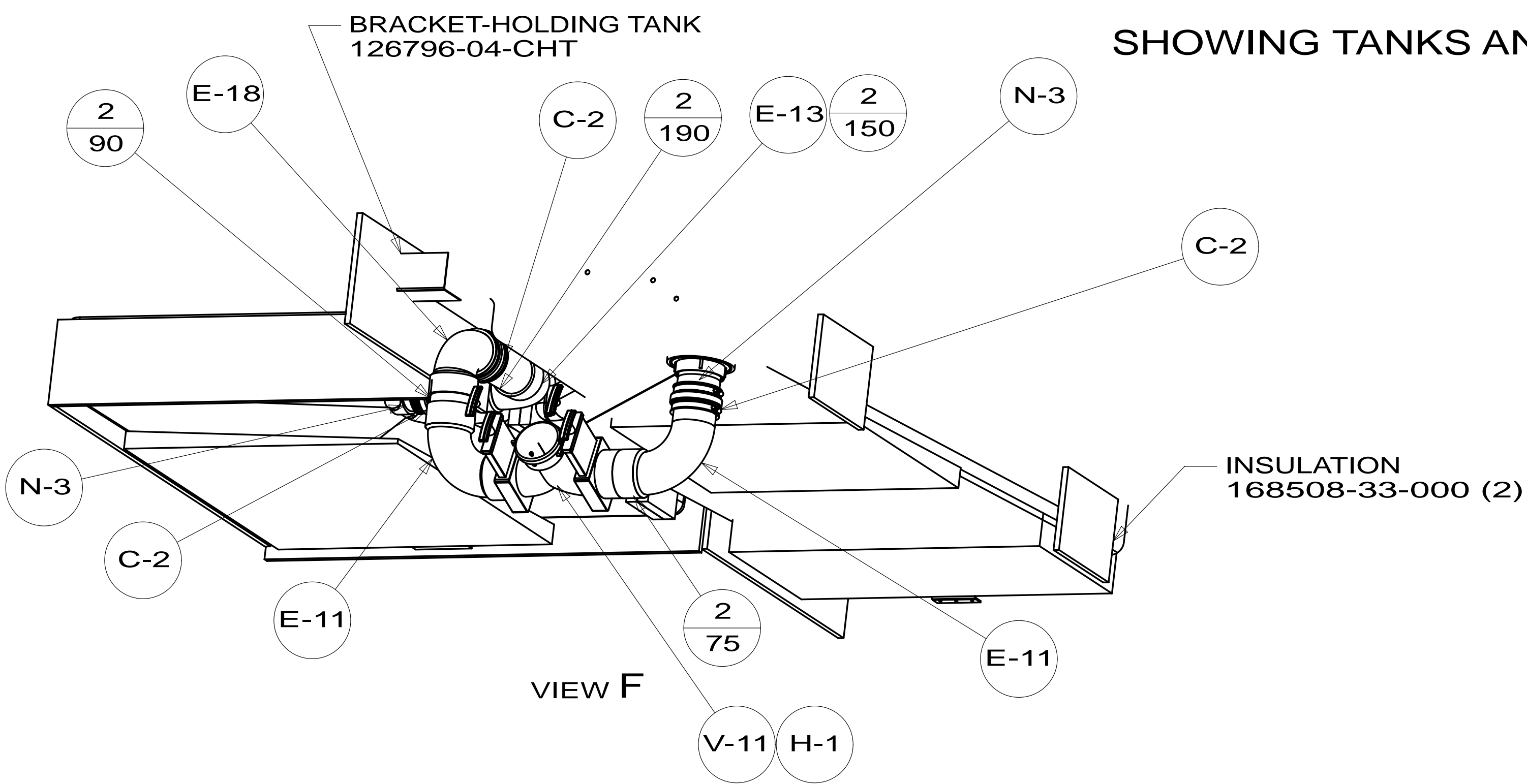
E-6

E-15

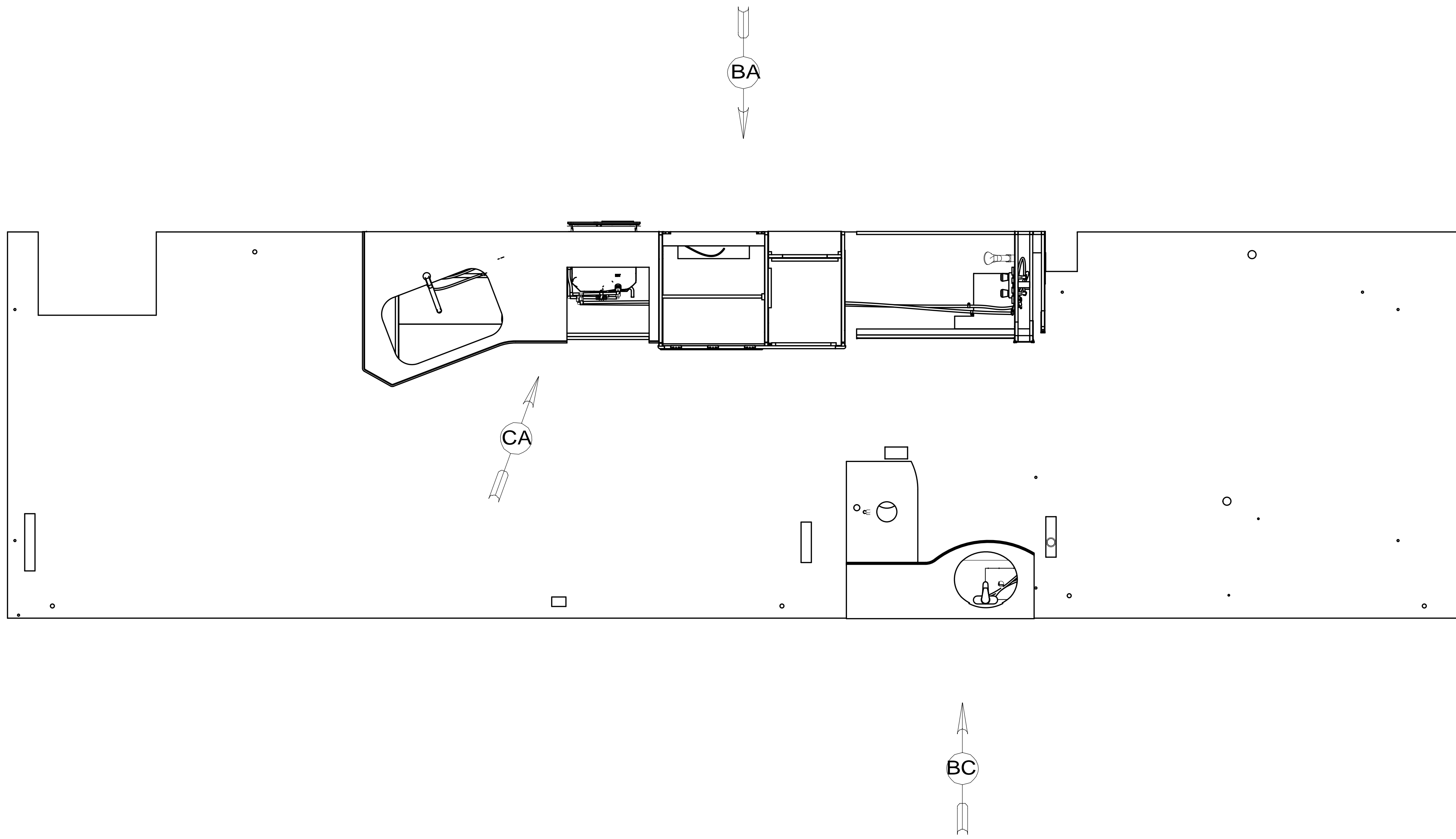
|                              |                |     |
|------------------------------|----------------|-----|
| FIRST USED                   | 13 D36V        |     |
| DO NOT SCALE DRAWING         |                |     |
| TITLE: DRAINAGE SYSTEM INSTL |                |     |
| SHEET 3                      | PART NO 181977 | REV |



SHOWING TANKS AND DRAINS



|                              |         |        |             |
|------------------------------|---------|--------|-------------|
| FIRST USED                   | 13 D36V |        |             |
| DO NOT SCALE DRAWING         |         |        |             |
| TITLE: DRAINAGE SYSTEM INSTL |         |        |             |
| SHEET 4                      | PART NO | 181977 | REV         |
|                              |         |        | 23-Apr-2013 |

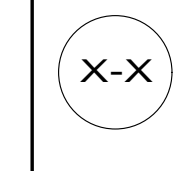


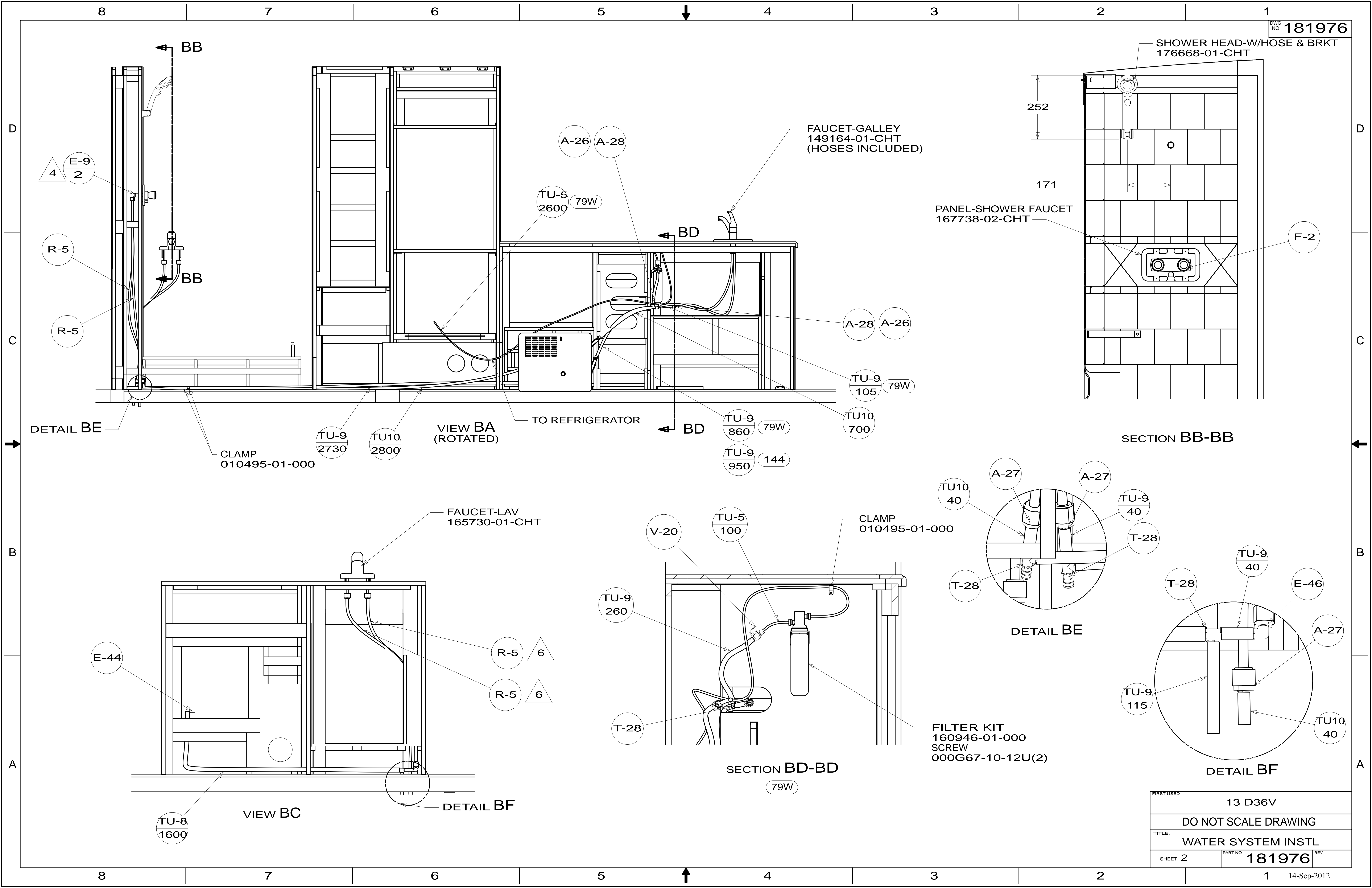
- 144 REFRIGERATOR-DOUBLE DOOR
- 53Z WTR HTR-6GAL/110/LP/MTR/AUTO
- 79W REFRIGERATOR-4 DOOR

9. SEAL VENT HOLE IN DOOR W/SILICONE SEALANT.
8. ALL CRIMP FITTINGS TO 1/2" PEX TUBING REQUIRE 1/2" CLAMP 140171-03-000.
7. ALL CRIMP FITTINGS TO 5/8" PEX TUBING REQUIRE 5/8" CLAMP 140171-04-000.
- 6 LABEL HOT AND COLD SUPPLY TUBES AND TAPE FITTING TO TUBE BEFORE CABINET SET TO PREVENT MOVEMENT.
- 5 ADD PIPE WRAP (LADDER SCRAP 110157-02-000) INSULATION.
- 4 ADD TEFLON TAPE 010405-02-000.
3. ALL TUBING TO BE SECURED AT 1200 INTERVALS MAXIMUM WITH CLAMP 010495-01-000 AND SCREW 000G67-10-12U OR EQUIVALENT.
2. TUBING TO BE INSTALLED WITH SUFFICIENT SLOPE TO PROVIDE DRAINAGE TO NEAREST VALVE.
1. PLASTIC FITTINGS TO BE SEALED WITH SEALANT 084456-01-000.

|                             |                                   |  |
|-----------------------------|-----------------------------------|--|
|                             |                                   | COPYRIGHT 2012<br>WINNEBAGO<br>INDUSTRIES, INC.    |
| DFTR                        | ORIG. DATE                        |  |
| CHKR                        | ALL DIMENSIONS ARE IN MILLIMETERS |  |
| P.E.                        |                                   |  |
| M.E.                        | FIRST USED                        |  |
| DSNR                        | 13 D36V                           |  |
| UNSPECIFIED TOLERANCES ARE: |                                   | MATERIAL:  |
| WHOLE DIM (X)               | : 3                               |  |
| ONE-PLACE (X.X)             | :                                 |  |
| TWO-PLACE (X.XX)            | :                                 |  |
| ANGLE                       | :                                 |  |
| THIRD ANGLE PROJECTION      |                                   |  |
| DO NOT SCALE DRAWING        |                                   | REFER TO ES0018 FOR FASTENER TIGHTENING GUIDELINES |
| TITLE: WATER SYSTEM INSTL   |                                   |  |
| SHEET 1 OF 4                | PART NO                           | 181976   |
| REF:                        | 1                                 | 14-Sep-2012  |

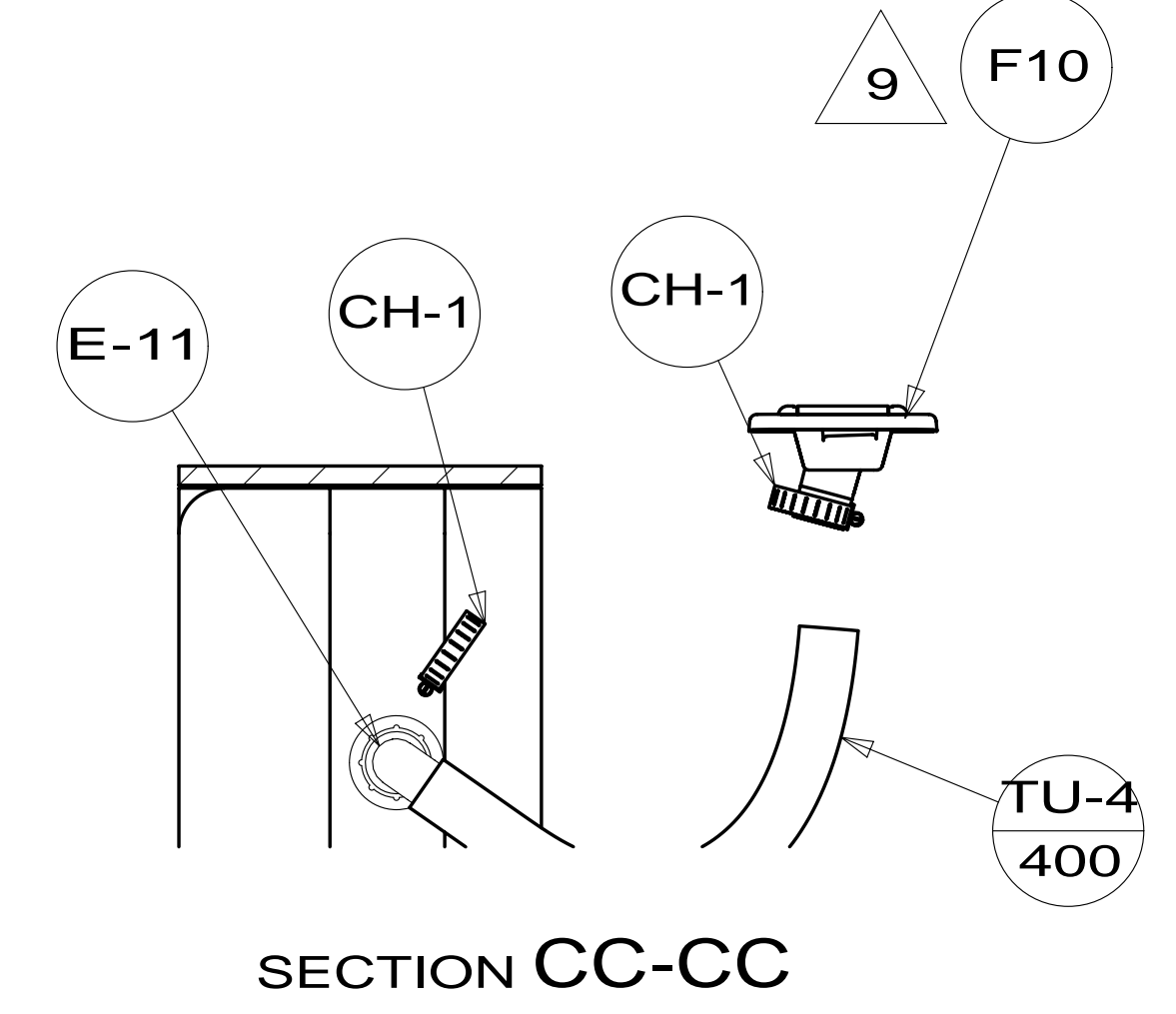
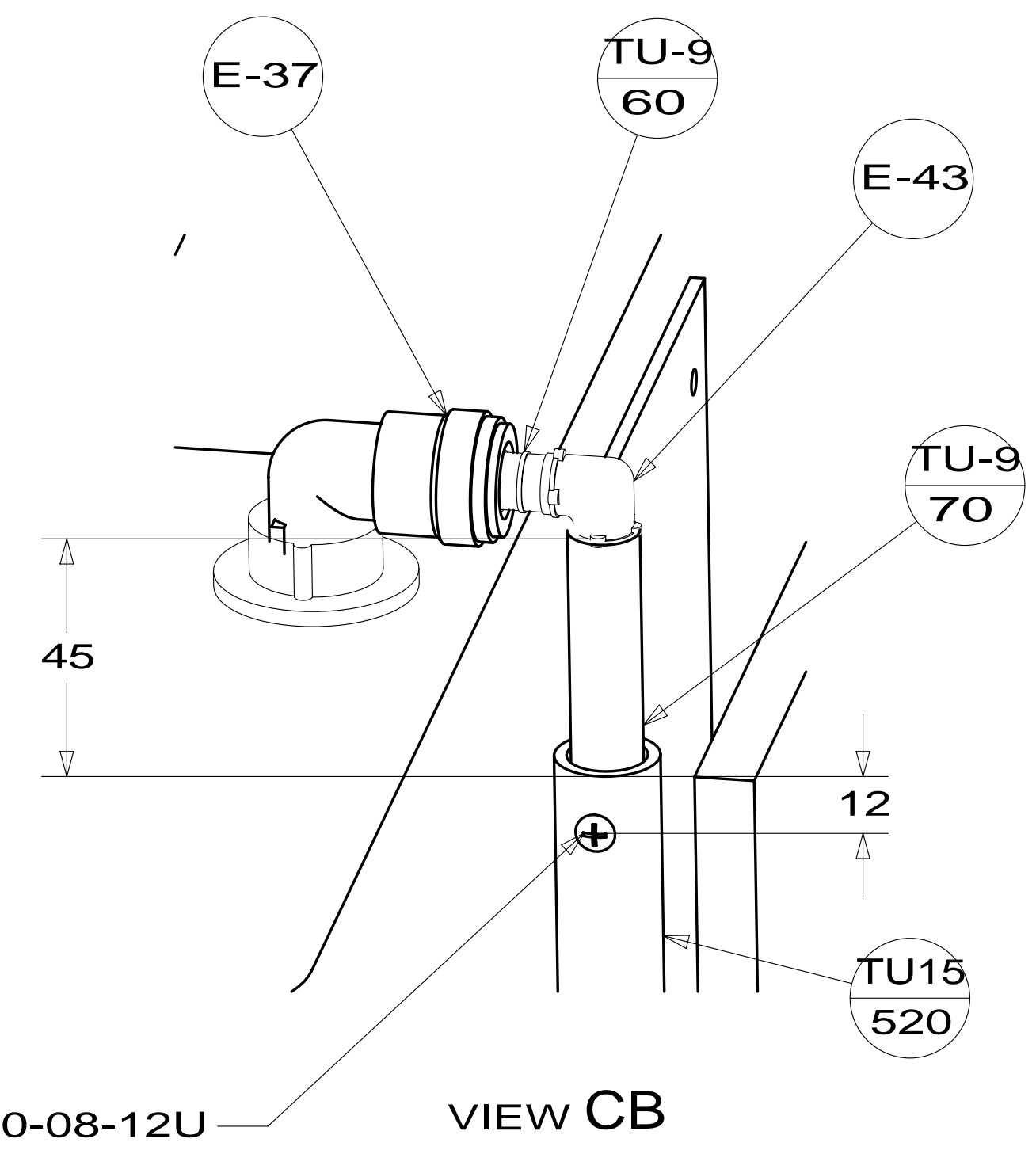
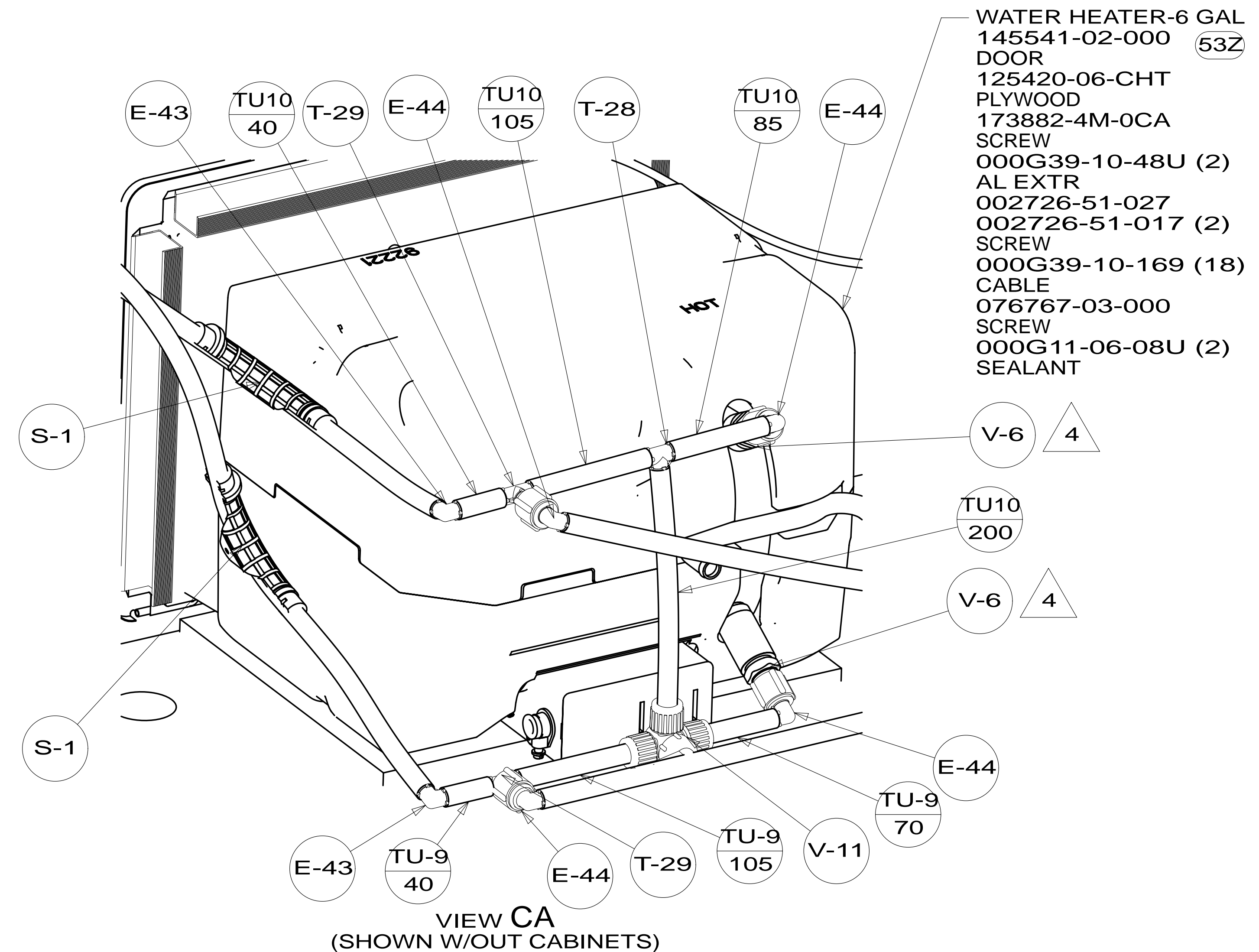
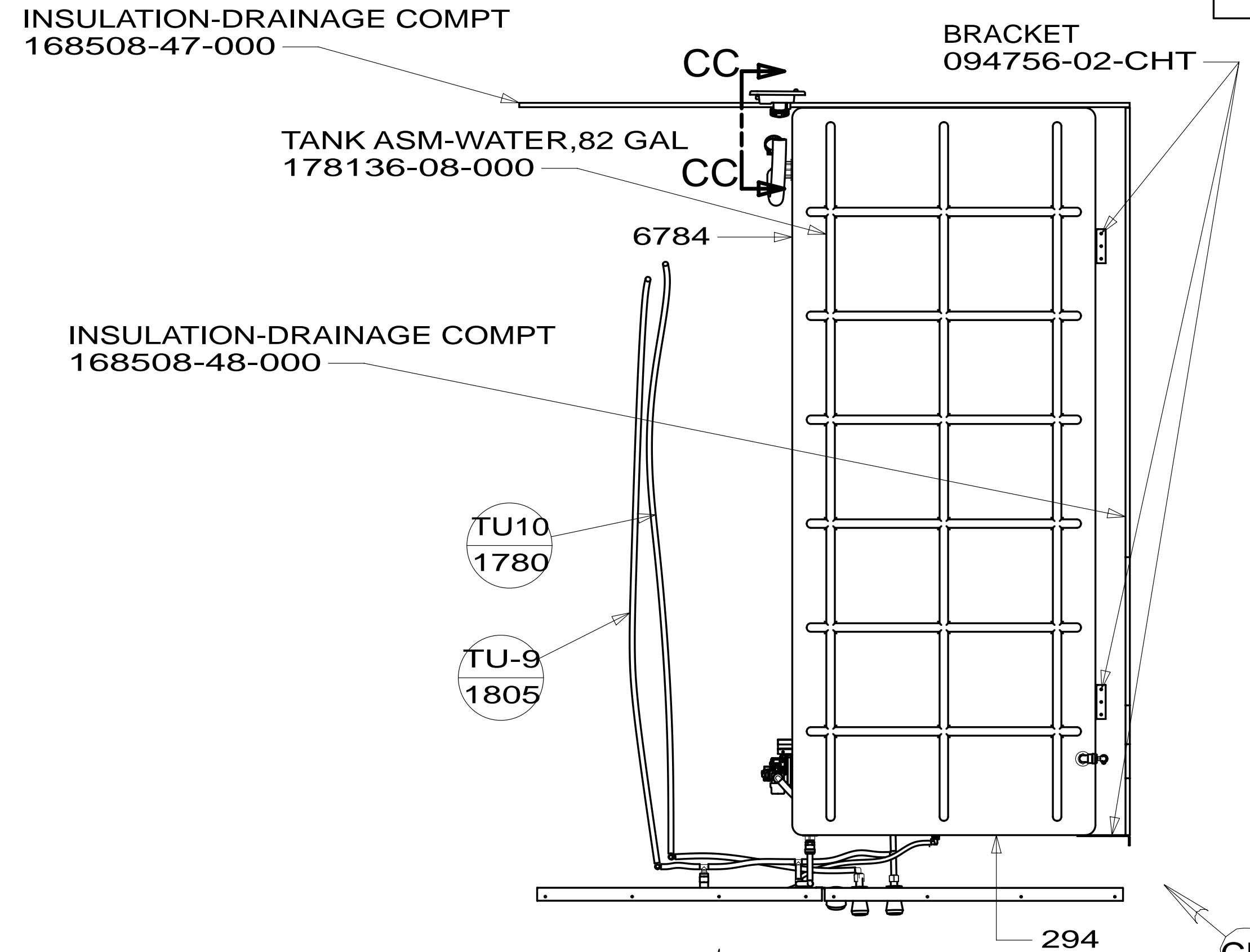
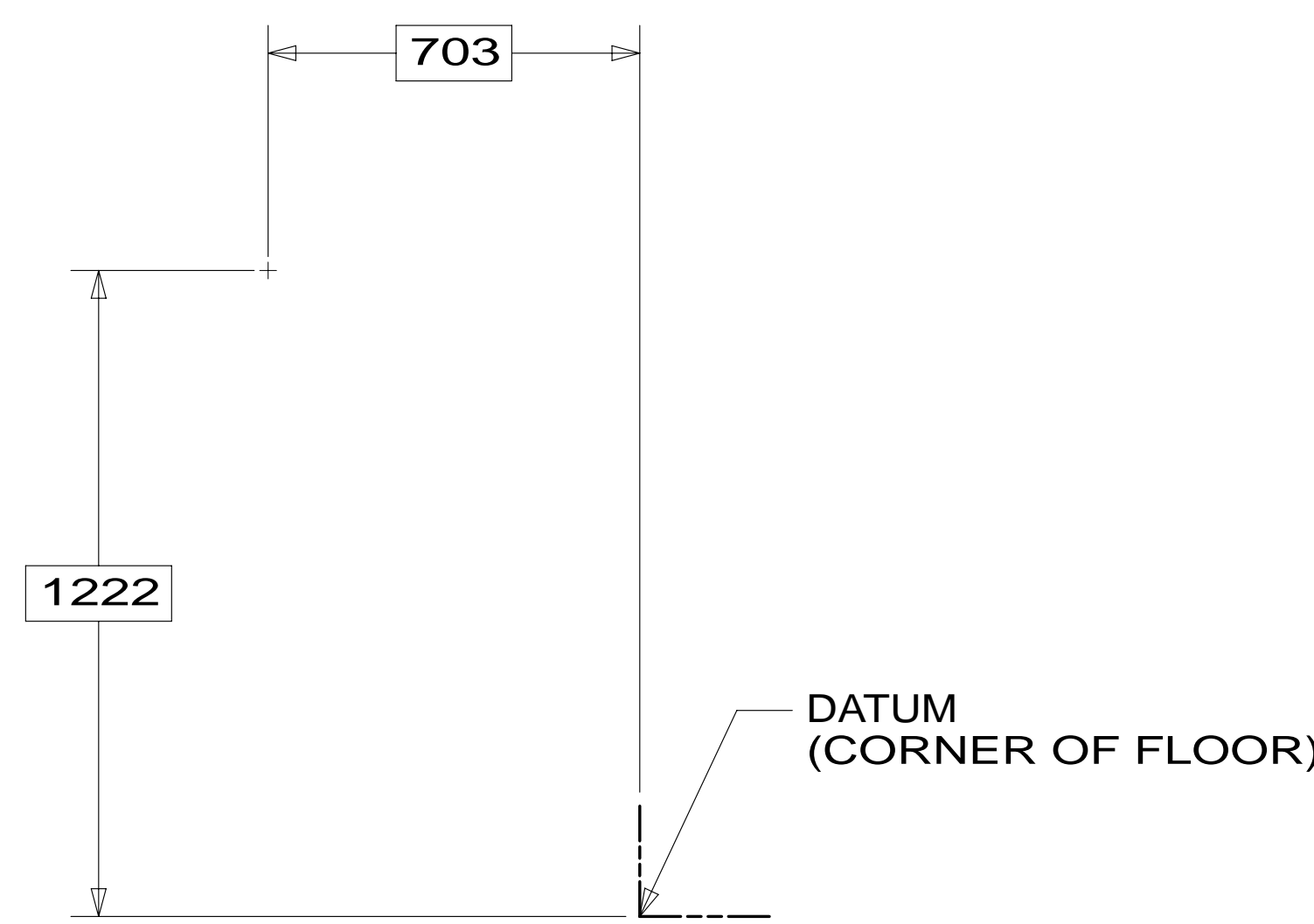
FOR WATER CALLOUTS SEE DWG NO 116230-01-000





|                      |                    |             |
|----------------------|--------------------|-------------|
| FIRST USED           | 13 D36V            |             |
| DO NOT SCALE DRAWING |                    |             |
| TITLE:               | WATER SYSTEM INSTL |             |
| SHEET 2              | PART NO            | 181976      |
|                      |                    | REV         |
|                      |                    | 14-Sep-2012 |





|            |                      |        |
|------------|----------------------|--------|
| FIRST USED | 13 D36V              |        |
| TITLE:     | DO NOT SCALE DRAWING |        |
| TITLE:     | WATER SYSTEM INSTL   |        |
| SHEET 3    | PART NO              | 181976 |
|            | REV                  |        |

14-Sep-2012

PANEL-SERVICE CENTER  
154823-07-CHT

DETAIL DB

PANEL-SERVICE CENTER  
154824-04-CHT

A-5  
CH-2

CLIP-GRIPPER  
091952-03-000  
SCREW  
000G39-10-10U

TU-3  
750

DETAIL DD

TU-9  
110

F-5

VIEW DA

A-22

V-11

TU-9  
65

TU-9  
40

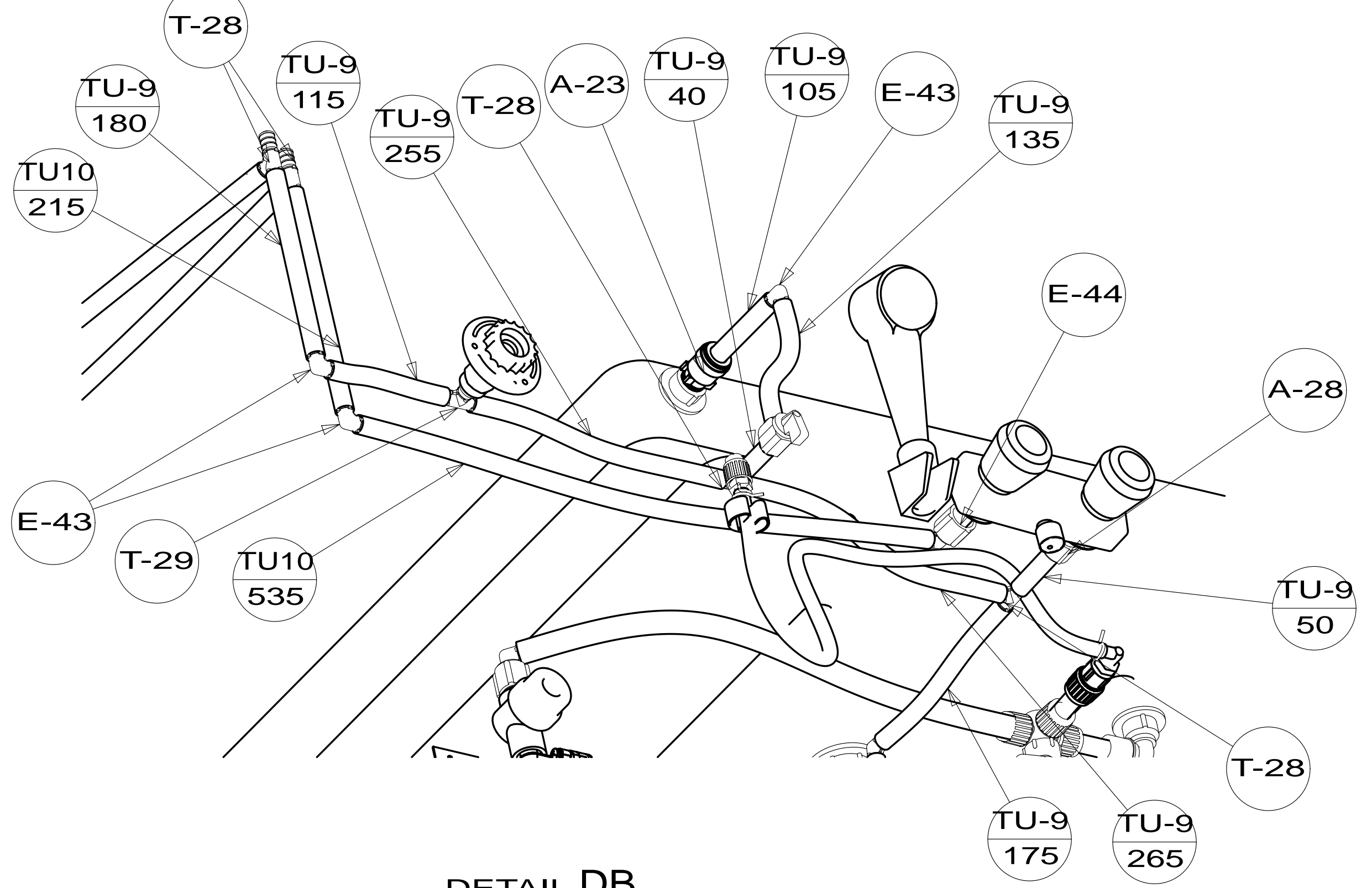
DETAIL DC

CH-1

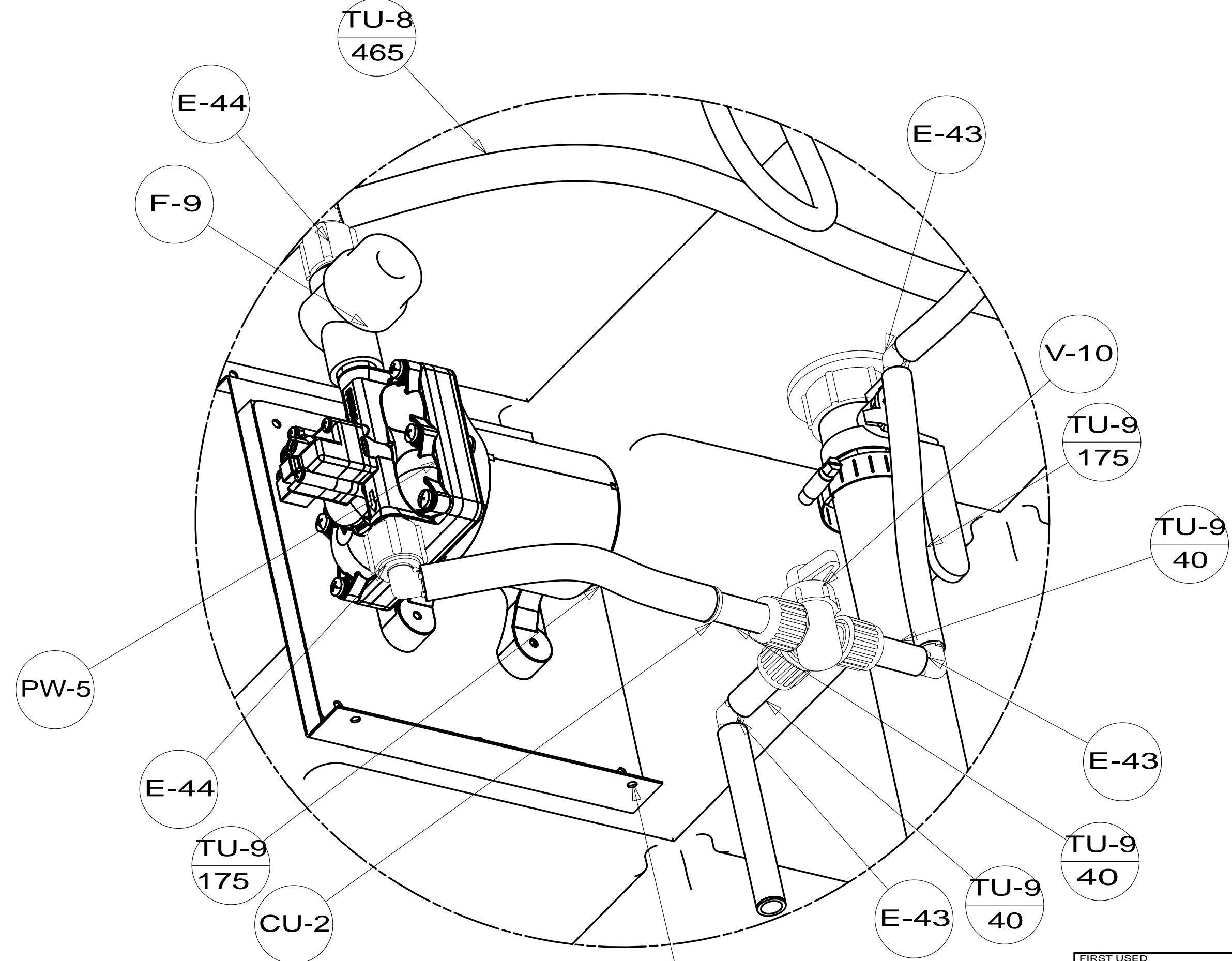
VALVE-BALL  
132483-01-000

TU13  
265

DETAIL DC



DETAIL DB  
(SHOWN W/OUT PANEL-SERVICE CENTER)



DETAIL DD

BRACKET-PUMP,WATER  
169229-01-CHT  
PANEL-WATER PUMP  
149477-04-CHT  
FOAM-PAD  
140364-01-CHT

|                      |                    |        |
|----------------------|--------------------|--------|
| FIRST USED           | 13 D36V            |        |
| DO NOT SCALE DRAWING |                    |        |
| TITLE:               | WATER SYSTEM INSTL |        |
| SHEET 4              | PART NO            | 181976 |
|                      |                    | REV    |