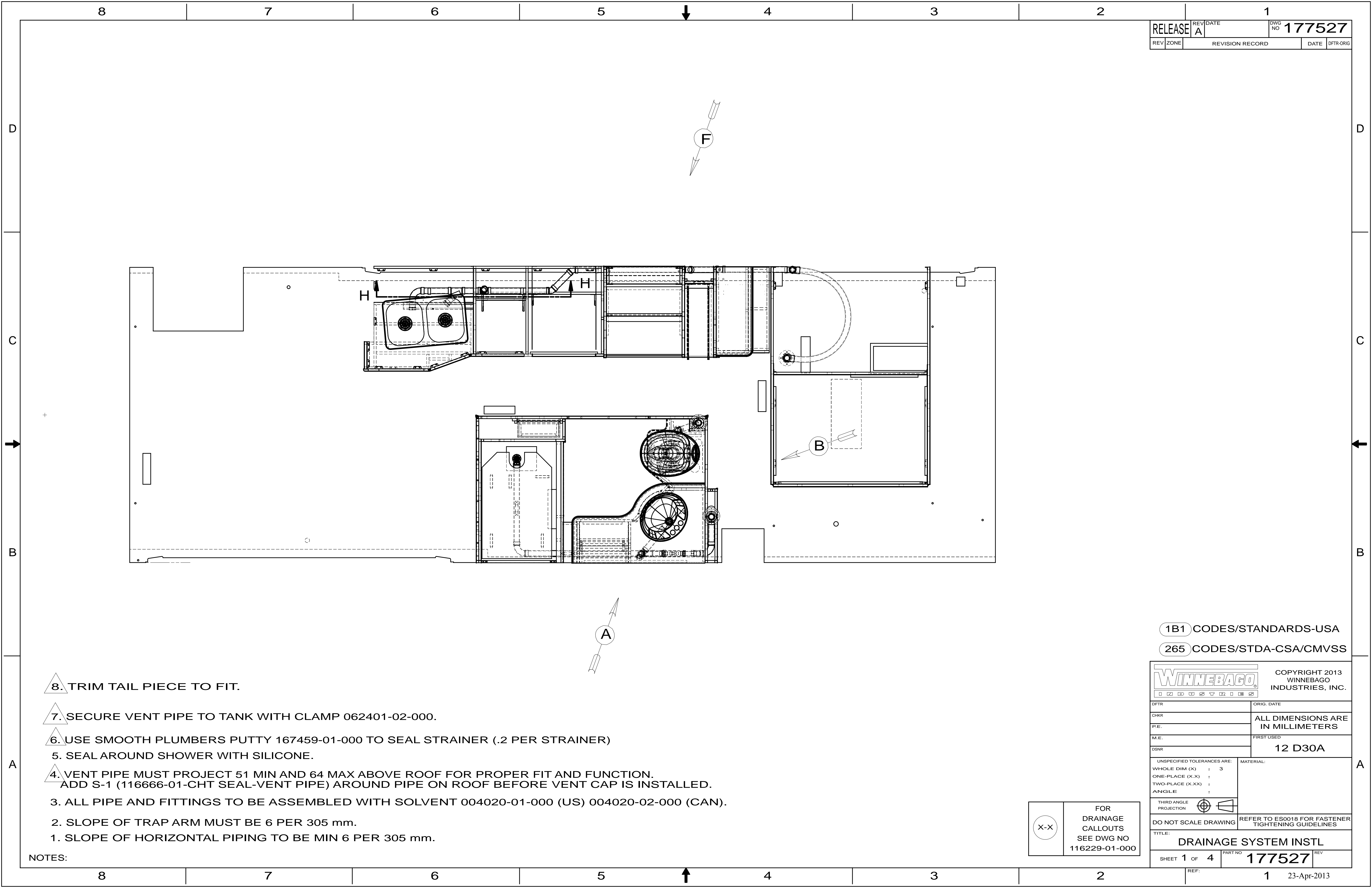


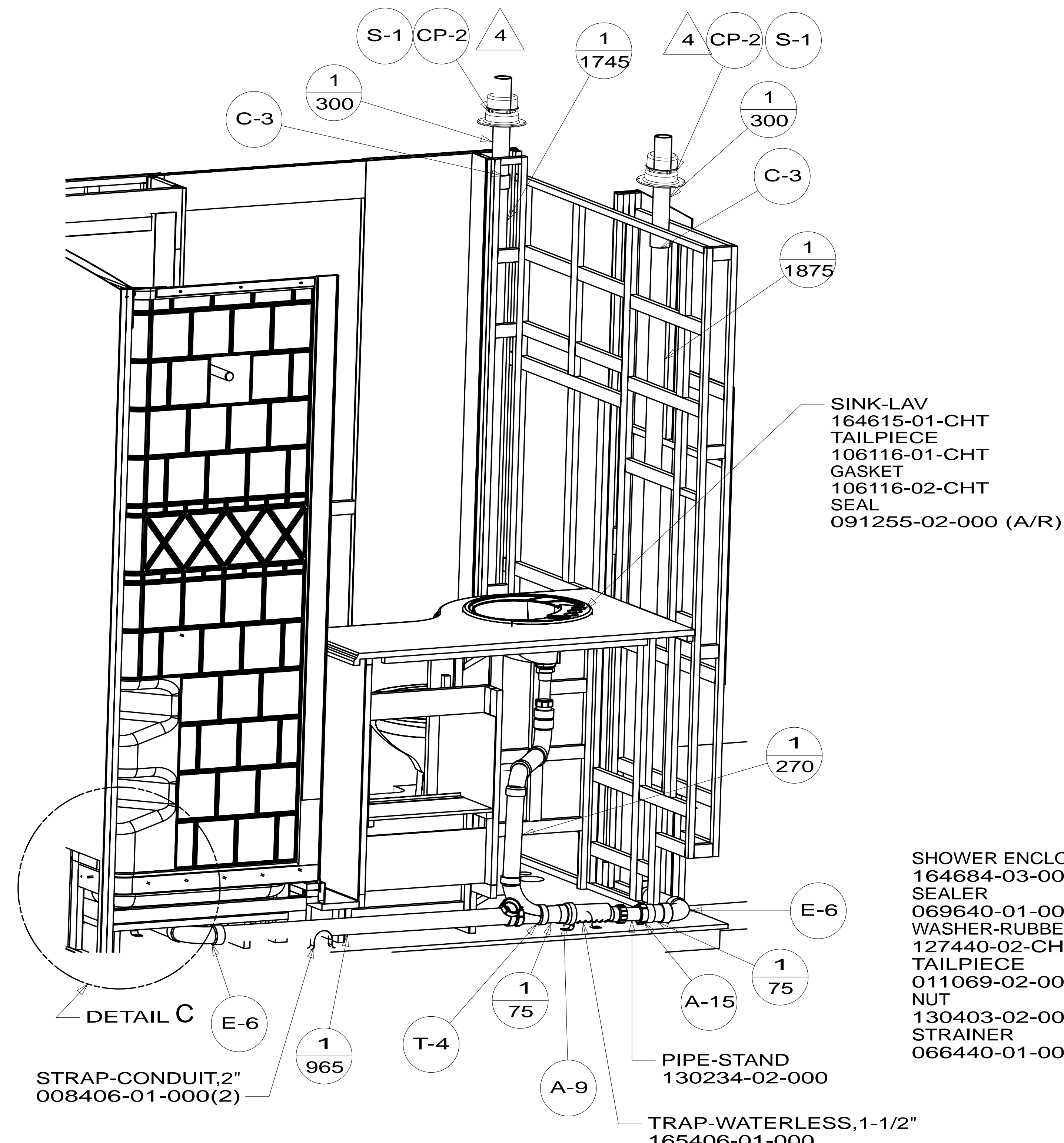
- NOTES:
8. TRIM TAIL PIECE TO FIT.
  7. SECURE VENT PIPE TO TANK WITH CLAMP 062401-02-000.
  6. USE SMOOTH PLUMBERS PUTTY 167459-01-000 TO SEAL STRAINER (.2 PER STRAINER)
  5. SEAL AROUND SHOWER WITH SILICONE.
  4. VENT PIPE MUST PROJECT 51 MIN AND 64 MAX ABOVE ROOF FOR PROPER FIT AND FUNCTION.  
ADD S-1 (116666-01-CHT SEAL-VENT PIPE) AROUND PIPE ON ROOF BEFORE VENT CAP IS INSTALLED.
  3. ALL PIPE AND FITTINGS TO BE ASSEMBLED WITH SOLVENT 004020-01-000 (US) 004020-02-000 (CAN).
  2. SLOPE OF TRAP ARM MUST BE 6 PER 305 mm.
  1. SLOPE OF HORIZONTAL PIPING TO BE MIN 6 PER 305 mm.

1B1 CODES/STANDARDS-USA  
 265 CODES/STDA-CSA/CMVSS

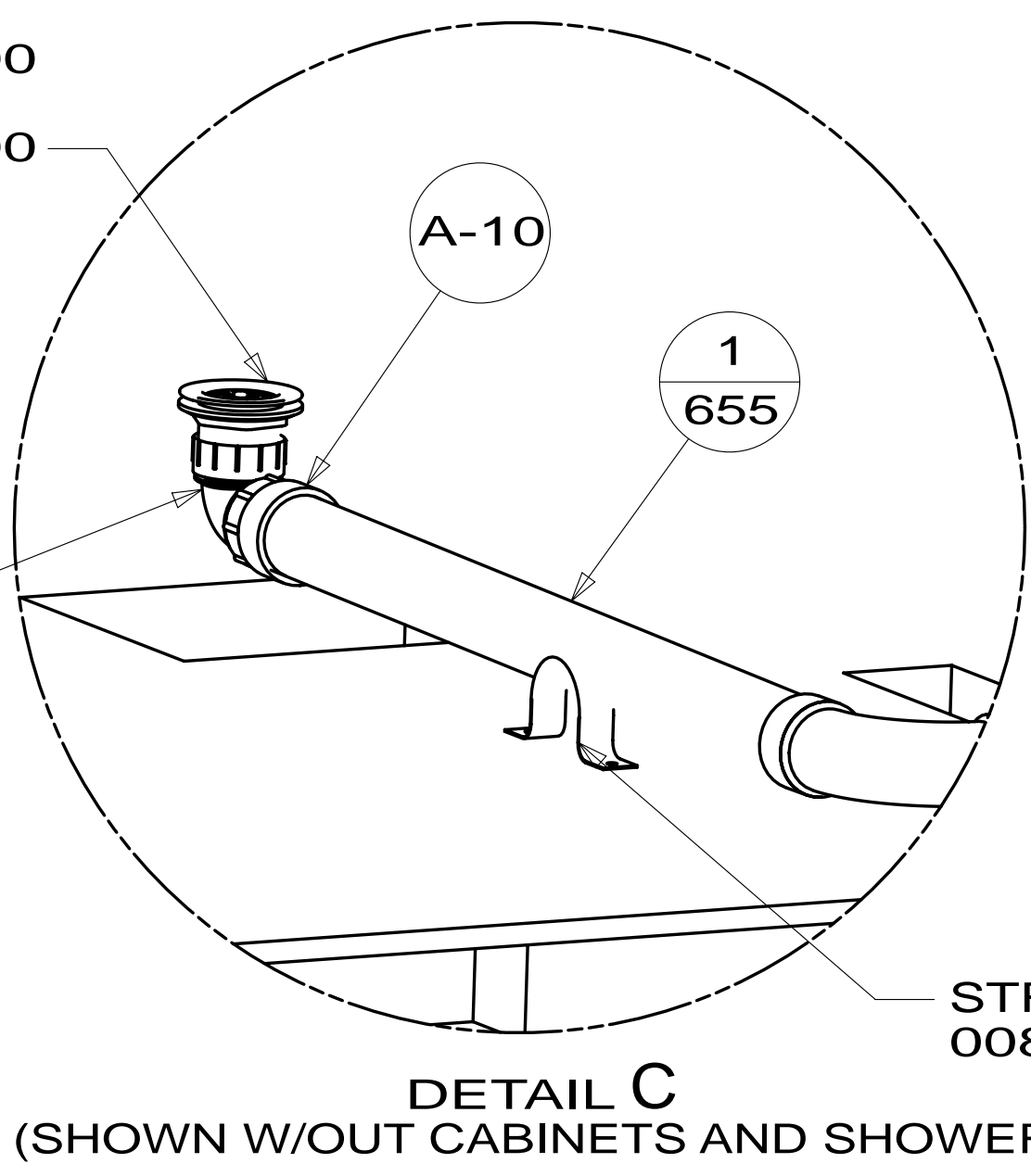
		COPYRIGHT 2013 WINNEBAGO INDUSTRIES, INC.
DTR	ORIG. DATE	
CHKR	ALL DIMENSIONS ARE IN MILLIMETERS	
P.E.		
M.E.	FIRST USED	
DSNR	12 D30A	
UNSPECIFIED TOLERANCES ARE:		MATERIAL:
WHOLE DIM (X)	: 3	
ONE-PLACE (X.X)	:	
TWO-PLACE (X.XX)	:	
ANGLE	:	
THIRD ANGLE PROJECTION		
DO NOT SCALE DRAWING		REFER TO ES0018 FOR FASTENER TIGHTENING GUIDELINES
TITLE: DRAINAGE SYSTEM INSTL		
SHEET 1 OF 4	PART NO	177527
REF:	1	23-Apr-2013

FOR  
DRAINAGE  
CALLOUTS  
SEE DWG NO  
116229-01-000

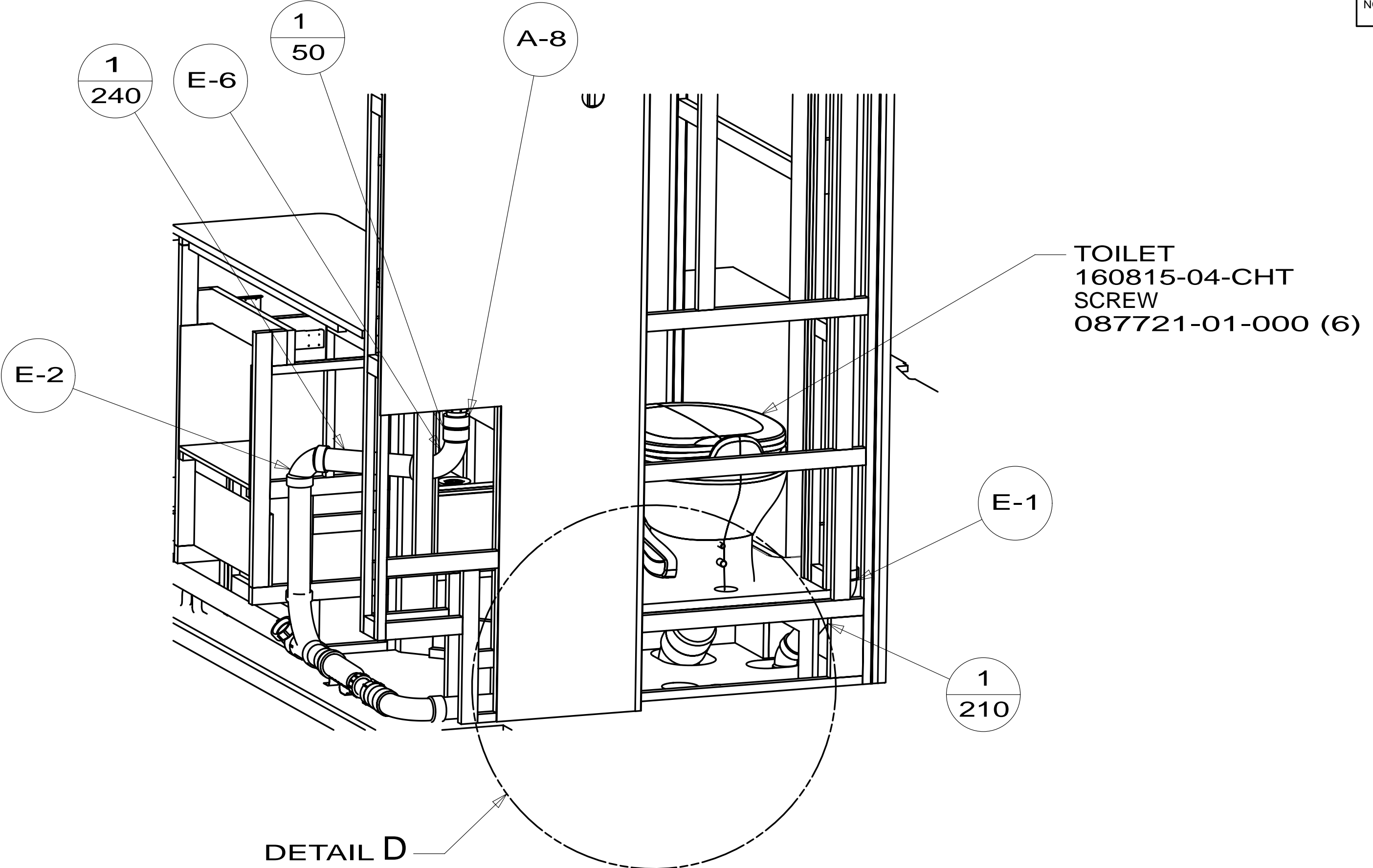




- SHOWER ENCLOSURE ASM  
164684-03-000  
SEALER  
069640-01-000  
WASHER-RUBBER  
127440-02-CHT  
TAILPIECE  
011069-02-000  
NUT  
130403-02-000  
STRAINER  
066440-01-000

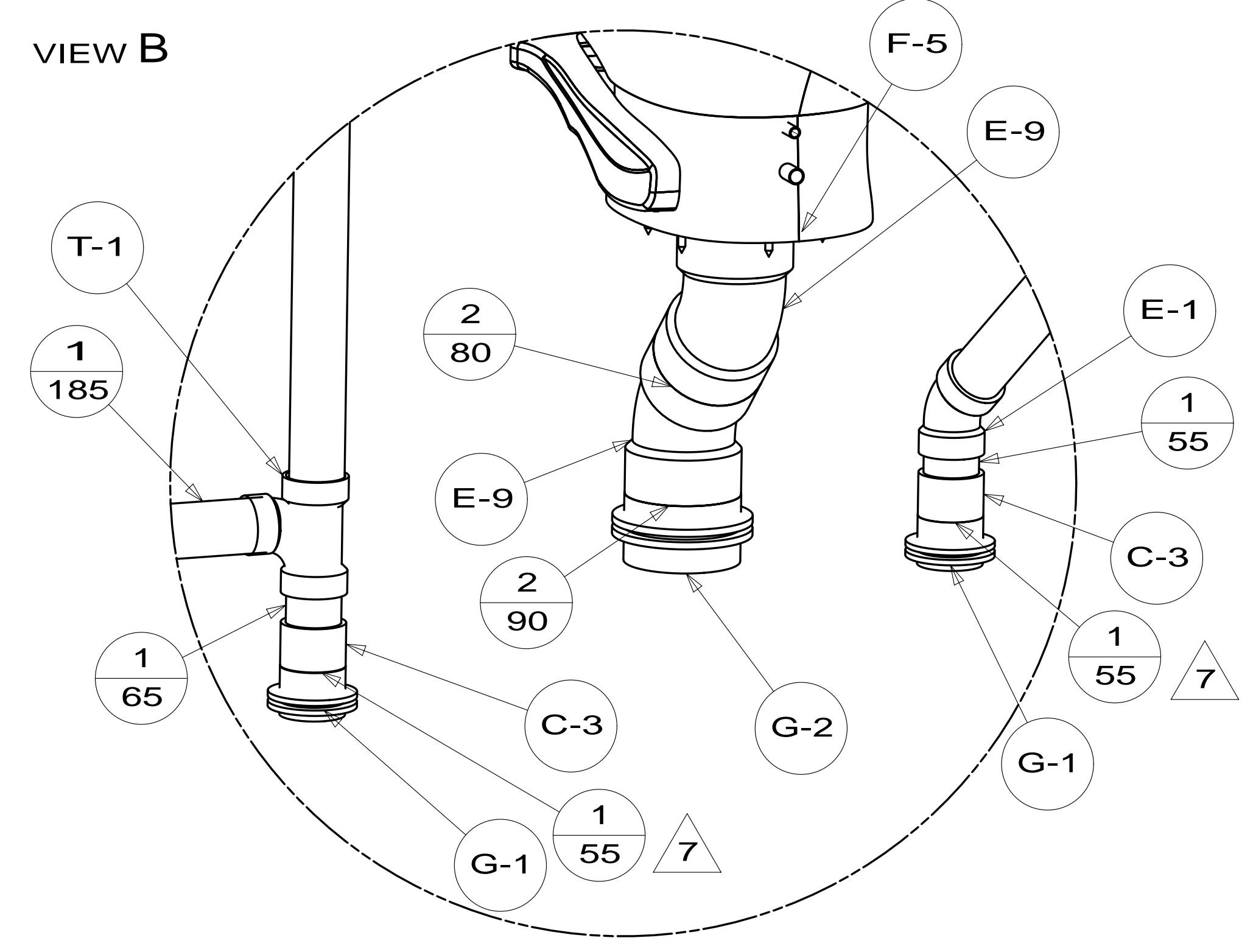


DETAIL C  
(SHOWN W/OUT CABINETS AND SHOWER)



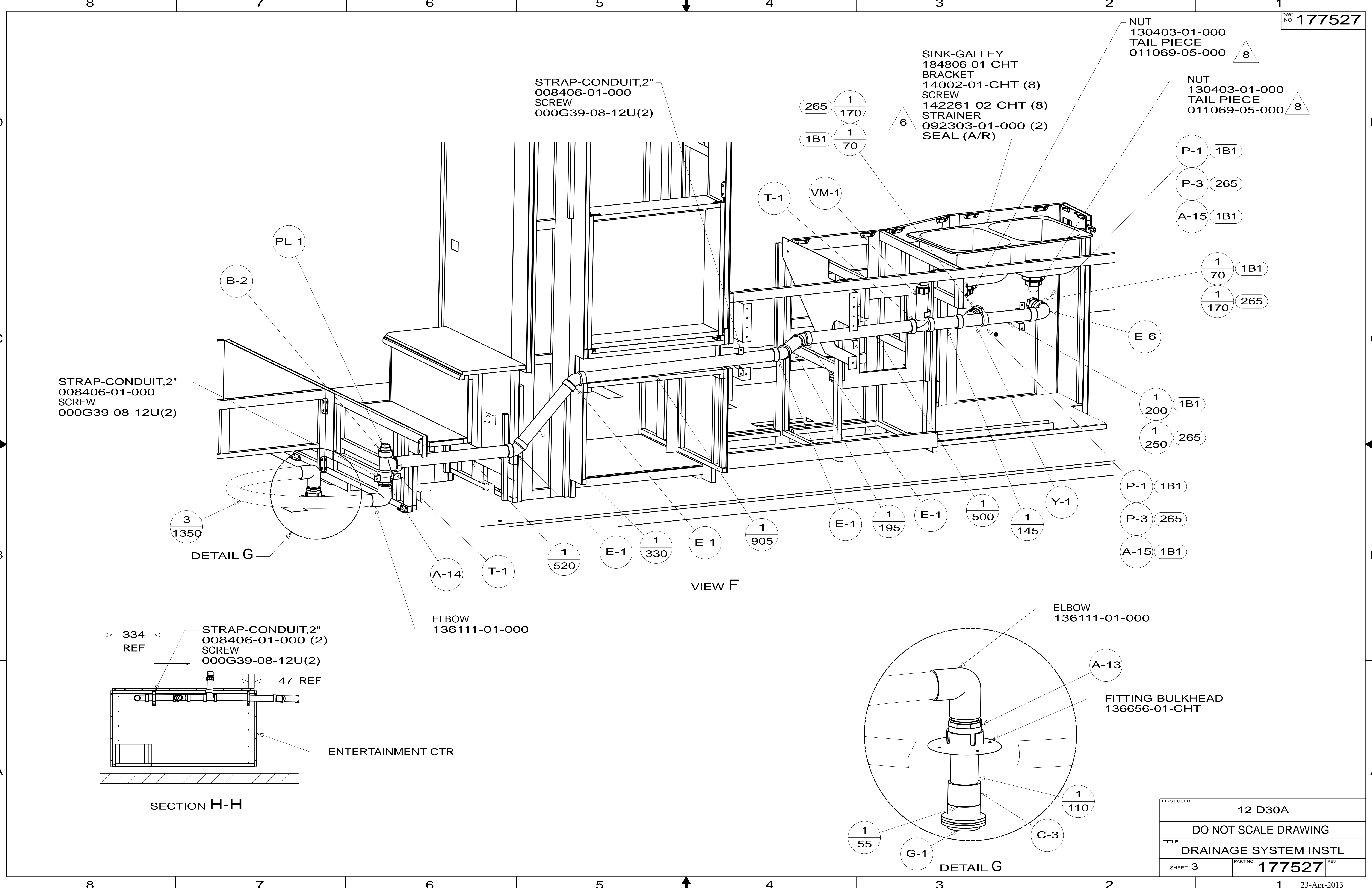
DETAIL D

VIEW B

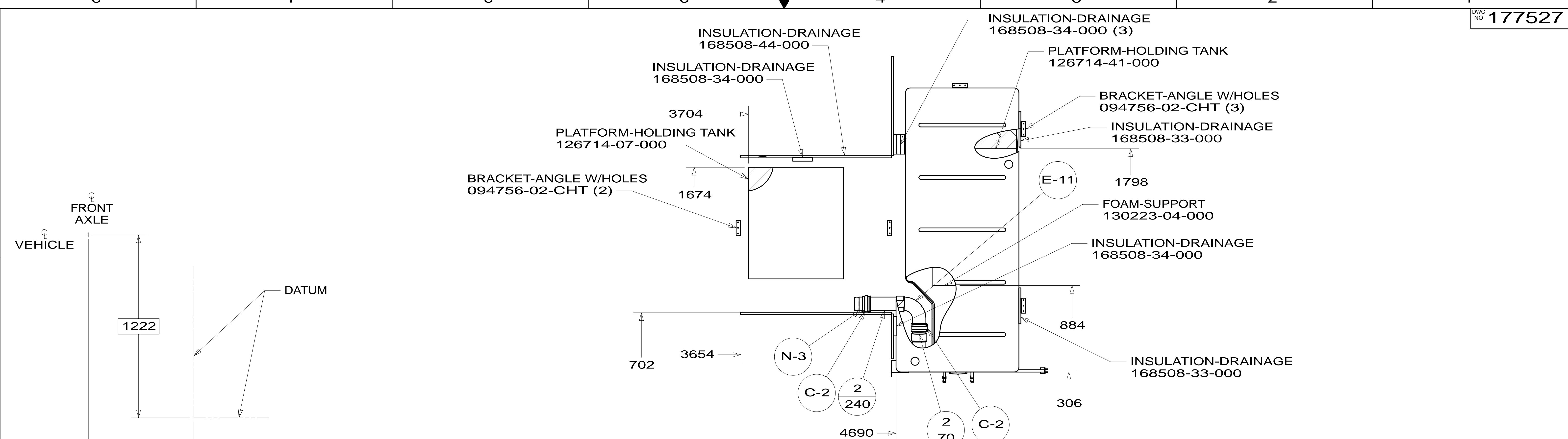


DETAIL D  
(SHOWN W/OUT CABINETS AND FLOOR)

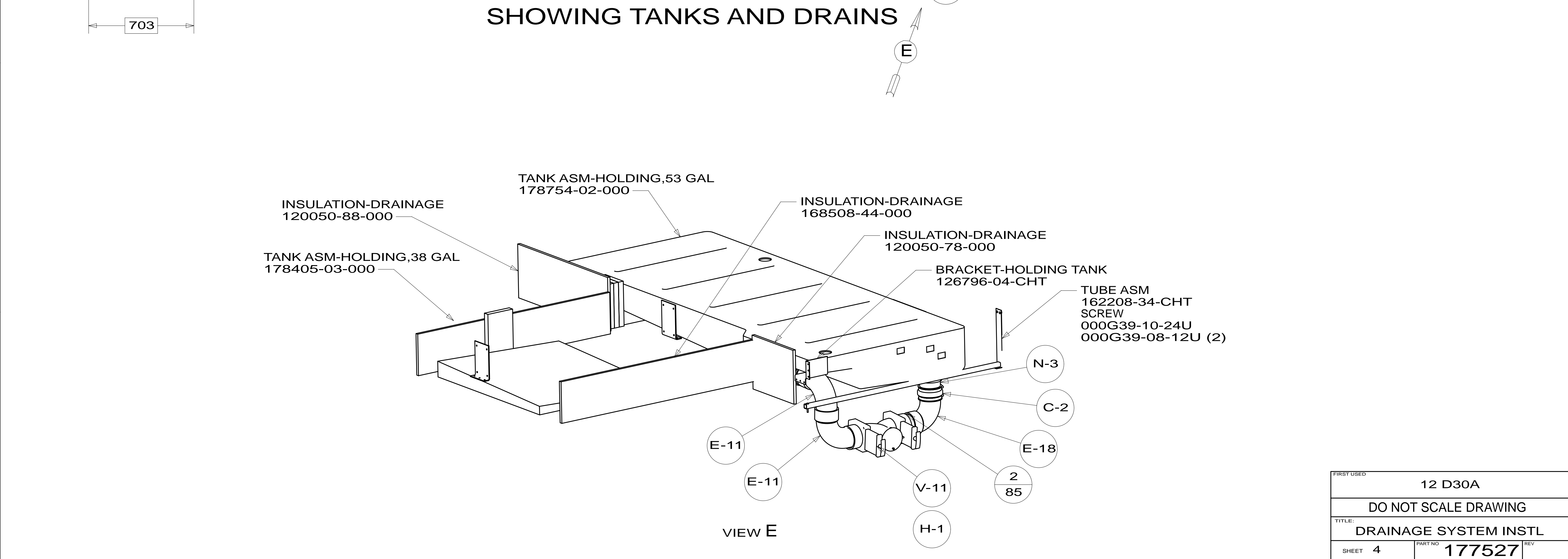
FIRST USED	12 D30A		
DO NOT SCALE DRAWING			
TITLE: DRAINAGE SYSTEM INSTL			
SHEET 2	PART NO	177527	REV
			23-Apr-2013



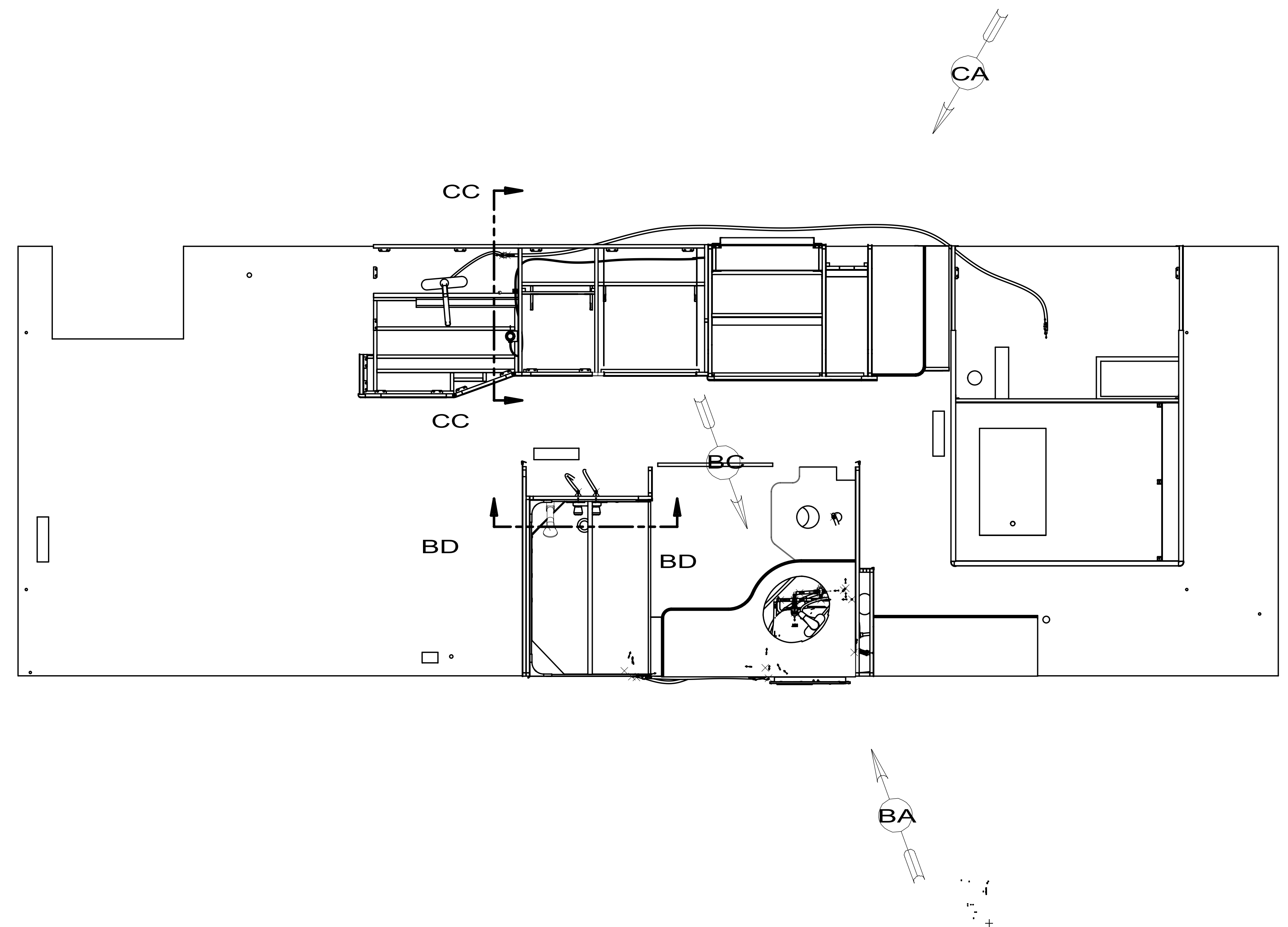
FIRST USED	12 D30A	
TITLE:	DO NOT SCALE DRAWING	
TITLE:	DRAINAGE SYSTEM INSTL	
SHEET 3	PART NO 177527	REV
		23-Apr-2013



SHOWING TANKS AND DRAINS



FIRST USED	12 D30A	
TITLE:	DO NOT SCALE DRAWING	
TITLE:	DRAINAGE SYSTEM INSTL	
SHEET 4	PART NO 177527	REV
	1	23-Apr-2013



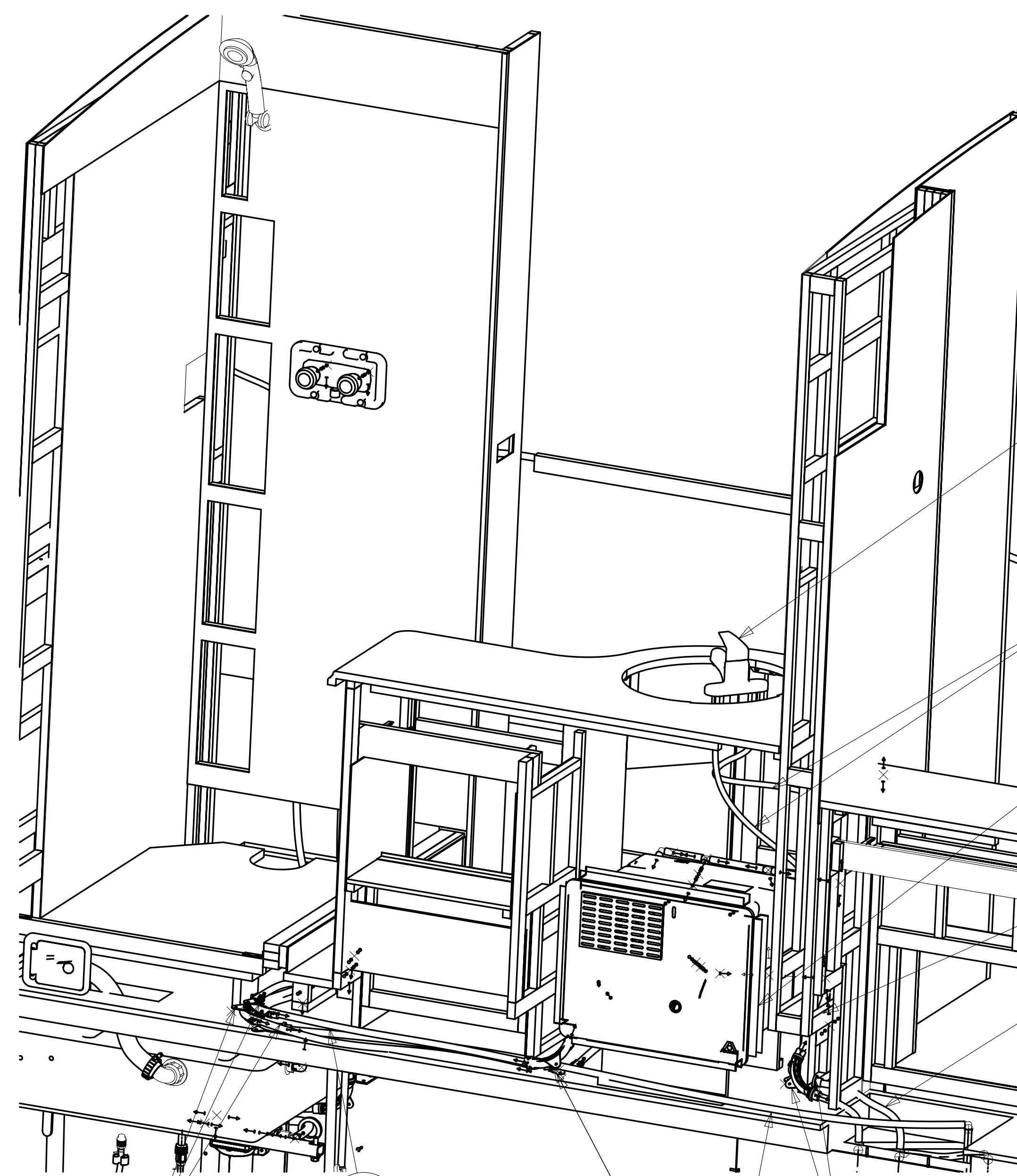
8. ALL CRIMP FITTINGS TO PEX TUBING REQUIRE 1/2" CLAMP 140171-03-000.
7. ALL CRIMP FITTINGS TO PEX TUBING REQUIRE 5/8" CLAMP 140171-04-000.
- 6 LABEL HOT AND COLD SUPPLY TUBES AND TAPE FITTING TO TUBE BEFORE CABINET SET TO PREVENT MOVEMENT.
- 5 ADD PIPE WRAP (LADDER SCRAP 110157-02-000) INSULATION.
- 4 ADD TEFLON TAPE 010405-02-000.
3. ALL TUBING TO BE SECURED AT 1200 INTERVALS MAXIMUM WITH CLAMP 010495-01-000 AND SCREW 000G67-10-12B OR EQUIVALENT.
2. TUBING TO BE INSTALLED WITH SUFFICIENT SLOPE TO PROVIDE DRAINAGE TO NEAREST VALVE.
1. PLASTIC FITTINGS TO BE SEALED WITH SEALANT 084456-01-000.

NOTES:

145 REFR-EXTRA CAP W/ICEMAKER

		COPYRIGHT 2012 WINNEBAGO INDUSTRIES, INC.
DTR	ORIG. DATE	
CHKR	ALL DIMENSIONS ARE IN MILLIMETERS	
P.E.		
M.E.	FIRST USED	
DSNR	13 D30A	
UNSPECIFIED TOLERANCES ARE:		MATERIAL:
WHOLE DIM (X)	: 3	
ONE-PLACE (X.X)	:	
TWO-PLACE (X.XX)	:	
ANGLE	:	
THIRD ANGLE PROJECTION		
DO NOT SCALE DRAWING		REFER TO ES0018 FOR FASTENER TIGHTENING GUIDELINES
TITLE: WATER SYSTEM INSTL		
SHEET 1 OF 4	PART NO 181207	REV

FOR WATER CALLOUTS SEE DWG NO 116230-01-000



VIEW BA

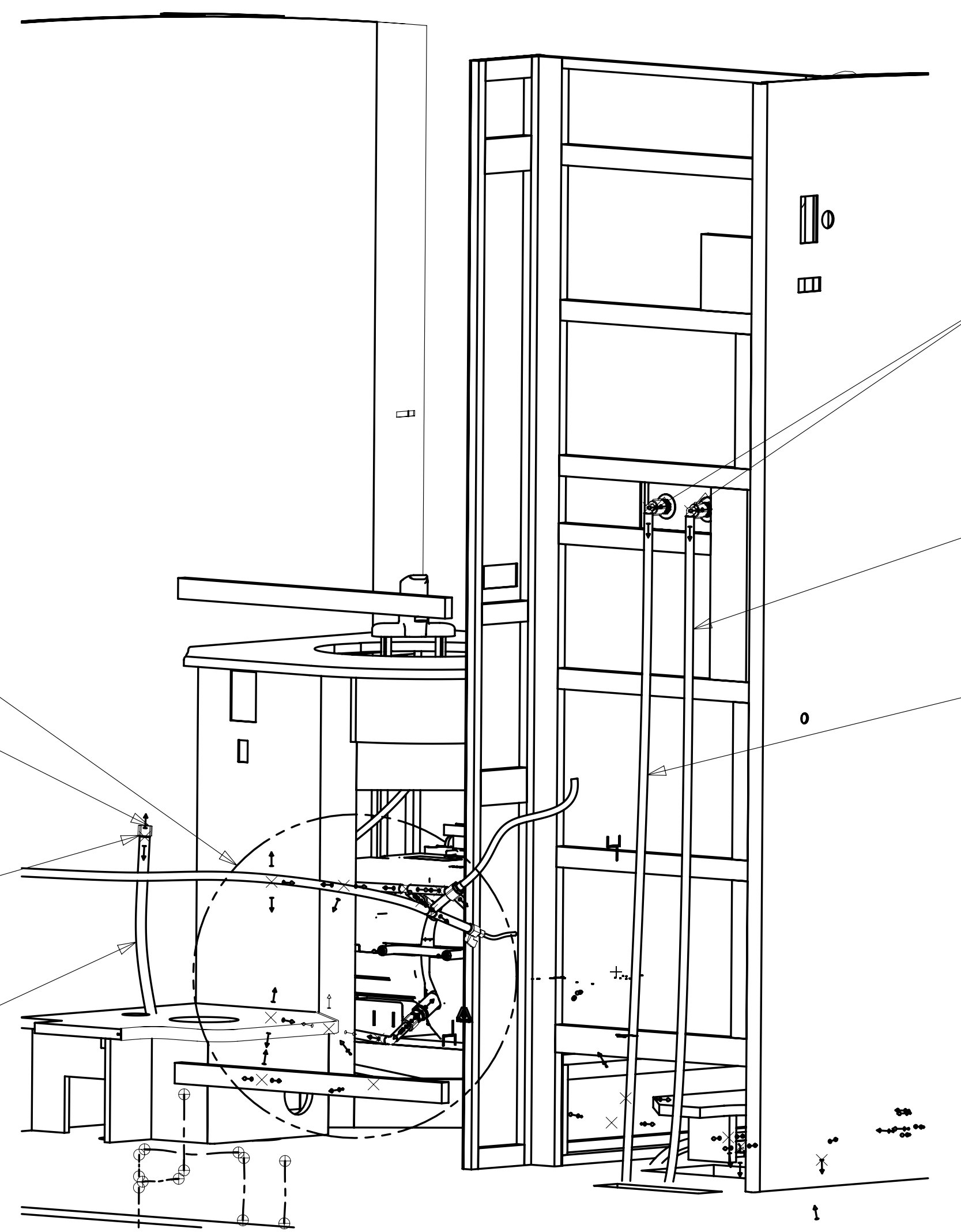
FAUCET  
165730-01-CHT

WATER HEATER-6 GAL  
145541-02-000  
DOOR  
125420-06-CHT  
FLANGE-WATER HEATER  
152239-01-CHT  
PLATFORM ASM  
155334-03-000  
SCREW  
000G39-10-48B (2)  
AL EXTR  
165959-51-002 (2)  
165959-51-004 (2)  
SCREW  
000G39-10-169 (18)  
CABLE  
076767-03-000  
SCREW  
000G11-006-08B (2)  
SEALANT

R-3 4

TU10  
655

TU-9  
500



VIEW BC

DETAIL BB

TO TOILET

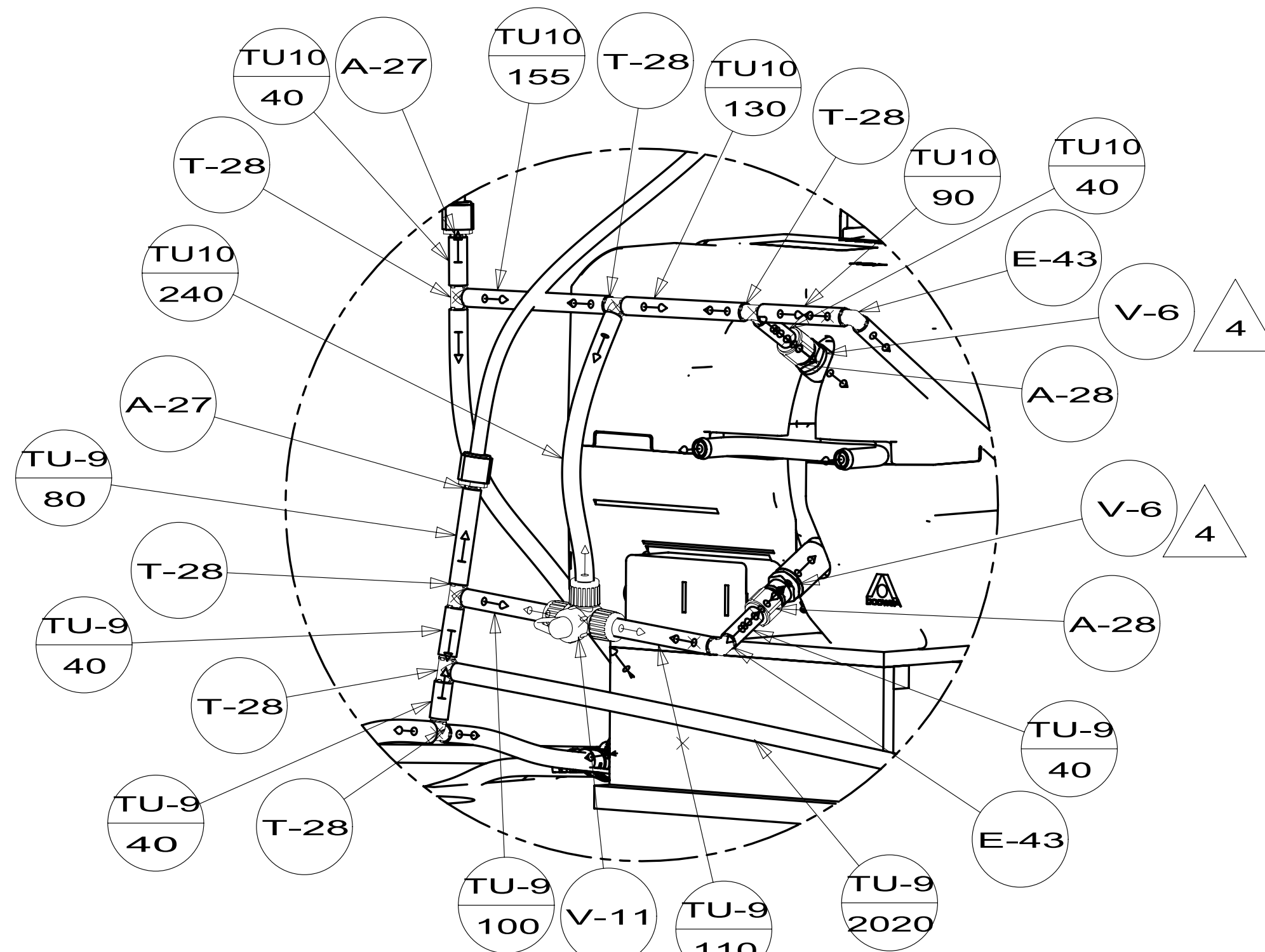
A-28

TU-8  
800

SHOWER HEAD  
176668-01-CHT

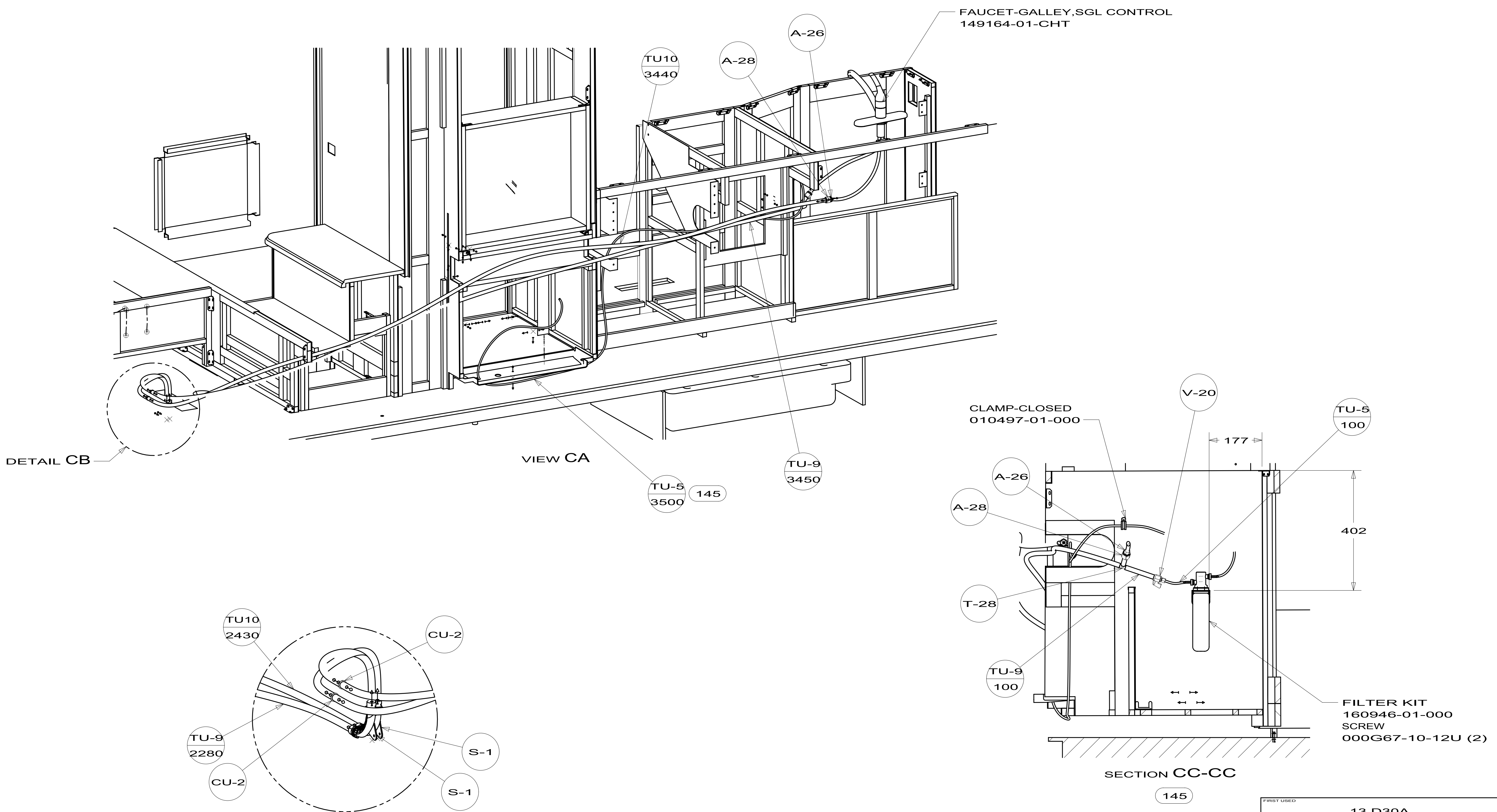
PANEL-SHOWER FAUCET  
167738-02-CHT  
SCREW  
000G11-08-12U(4)  
COVER  
166569-01-CHT(4)

SECTION BD-BD

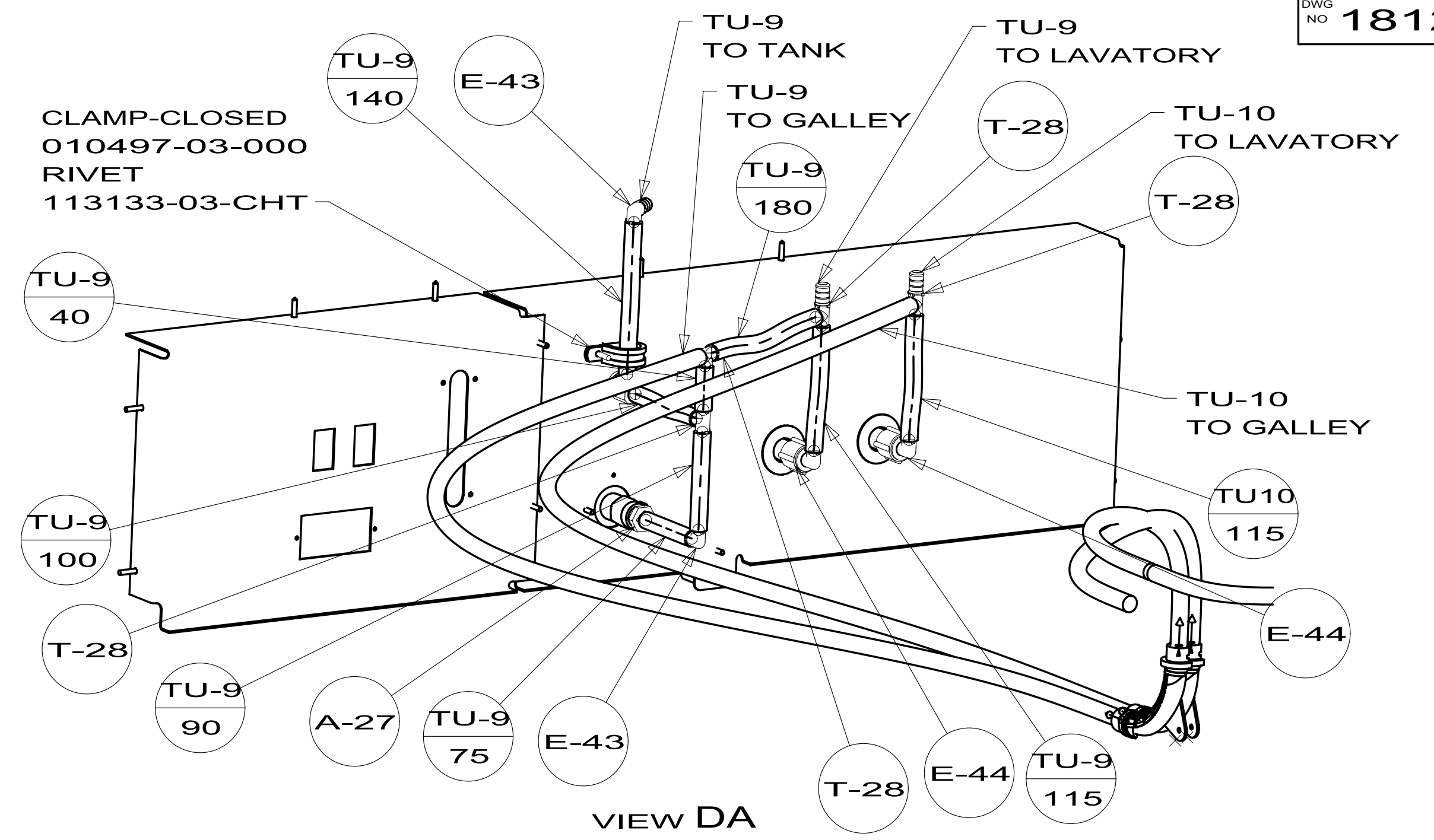
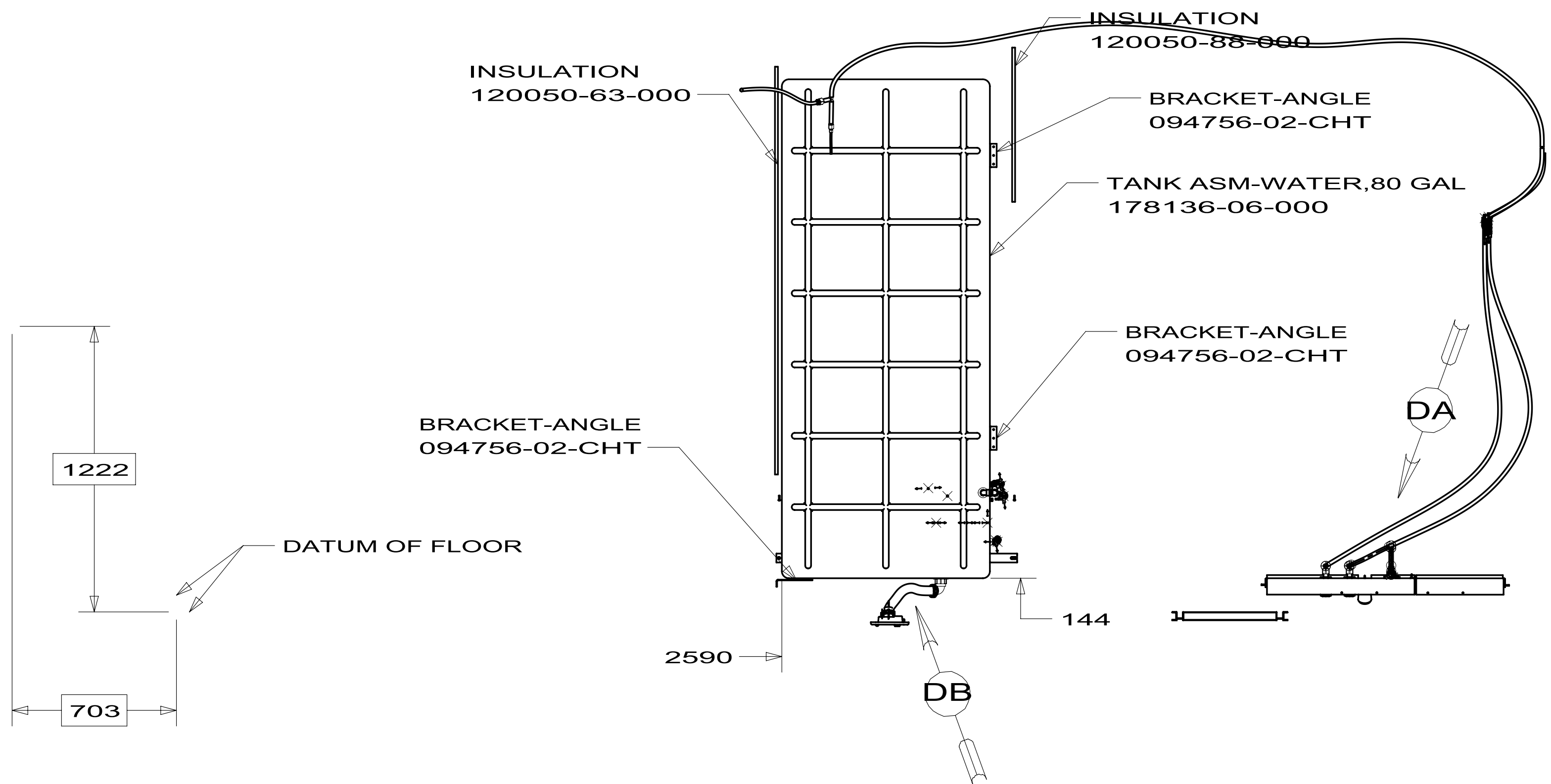


DETAIL BB  
(SHOWN W/OUT CABINETS)

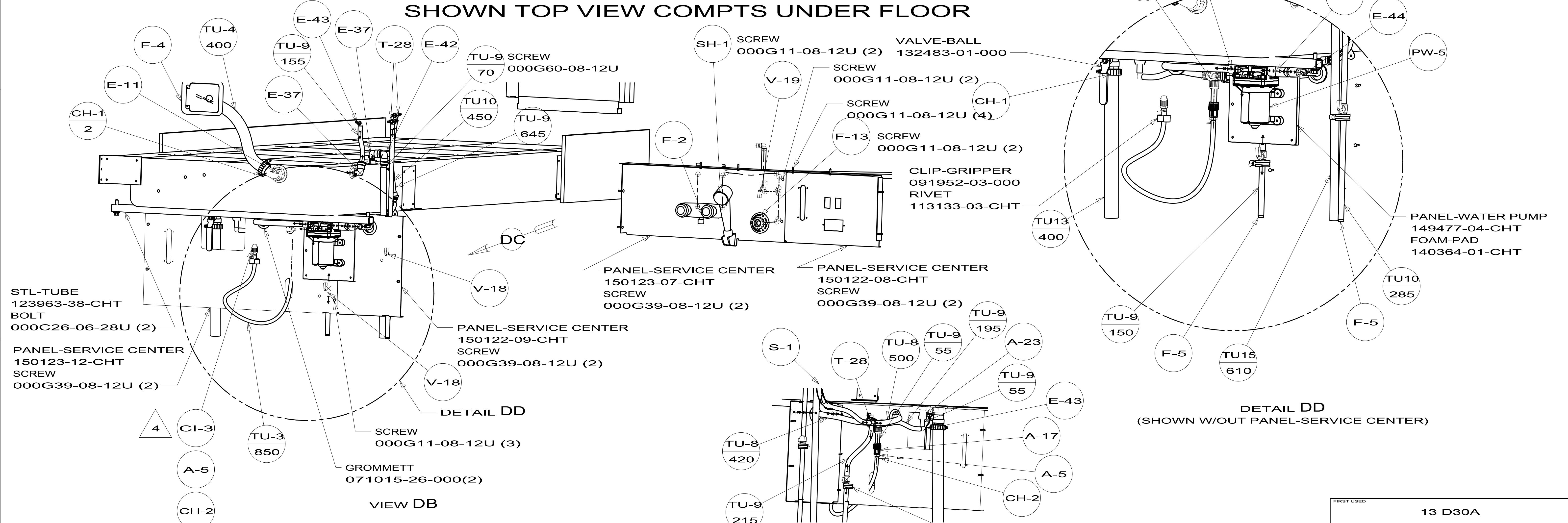
FIRST USED	13 D30A	
	DO NOT SCALE DRAWING	
TITLE:	WATER SYSTEM INSTL	
SHEET 2	PART NO	181207
	REV	



FIRST USED	13 D30A	
DO NOT SCALE DRAWING		
TITLE: WATER SYSTEM INSTL		
SHEET 3	PART NO 181207	REV



SHOWN TOP VIEW COMPTS UNDER FLOOR



FIRST USED	13 D30A	
TITLE:	DO NOT SCALE DRAWING	
TITLE:	WATER SYSTEM INSTL	
SHEET 4	PART NO 181207	REV