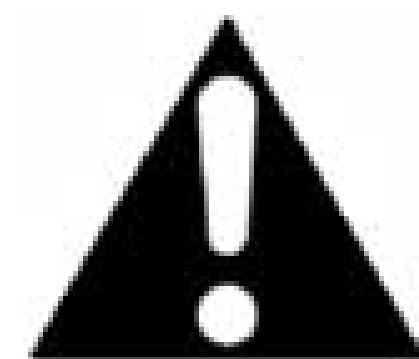




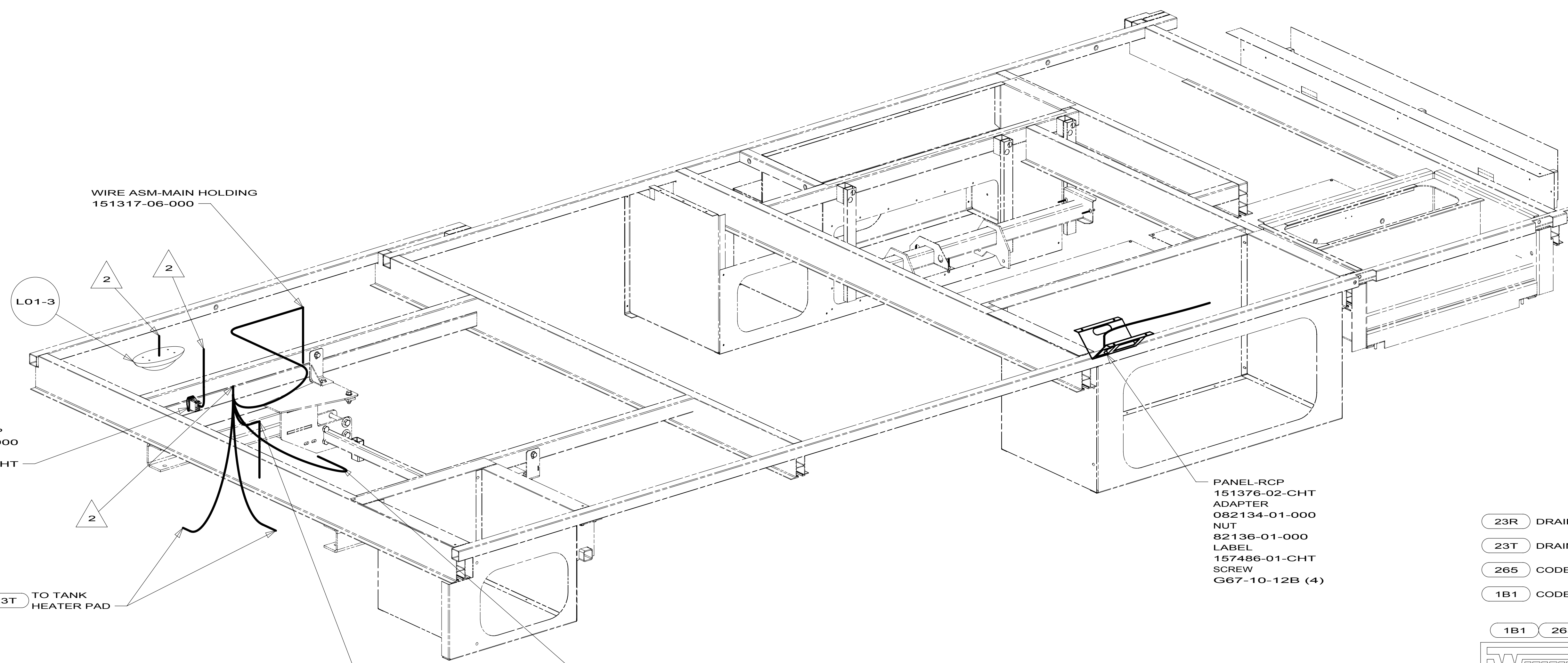
**DANGER**

**Danger of electrical shock, burns or death.** Always remove all power sources before attempting any repair, service or diagnostic work. Power can be present from shore power, generator, inverter or battery. All power sources must be disabled and secured before performing any service.



**CAUTION**

If you lack the skills, tools or equipment to perform diagnostic or repair work leave such work to an authorized Winnebago Industries dealer or other qualified shop.



- 23R** DRAINAGE SYSTEM/HEAT-PREWIRE
- 23T** DRAINAGE SYSTEM-HEATED
- 265** CODES/STANDARDS-CSA/CMVSS
- 1B1** CODES/STANDARDS USA



DTR	ORIG. DATE
CHKR	ALL DIMENSIONS ARE IN MILLIMETERS
P.E.	
M.E.	FIRST USED
DSNR	<b>12 524J</b>
UNSPECIFIED TOLERANCES ARE:	
WHOLE DIM (X)	: 3
ONE-PLACE (X.X)	: 1.5
TWO-PLACE (X.XX)	: 0.50
ANGLE	: 1°
THIRD ANGLE PROJECTION	
DO NOT SCALE DRAWING	REFER TO ES0018 FOR FASTENER TIGHTENING GUIDELINES
TITLE: <b>WIRING INSTL-BODY, 12V</b>	
SHEET <b>1</b> OF <b>5</b>	PART NO <b>179341</b> REV

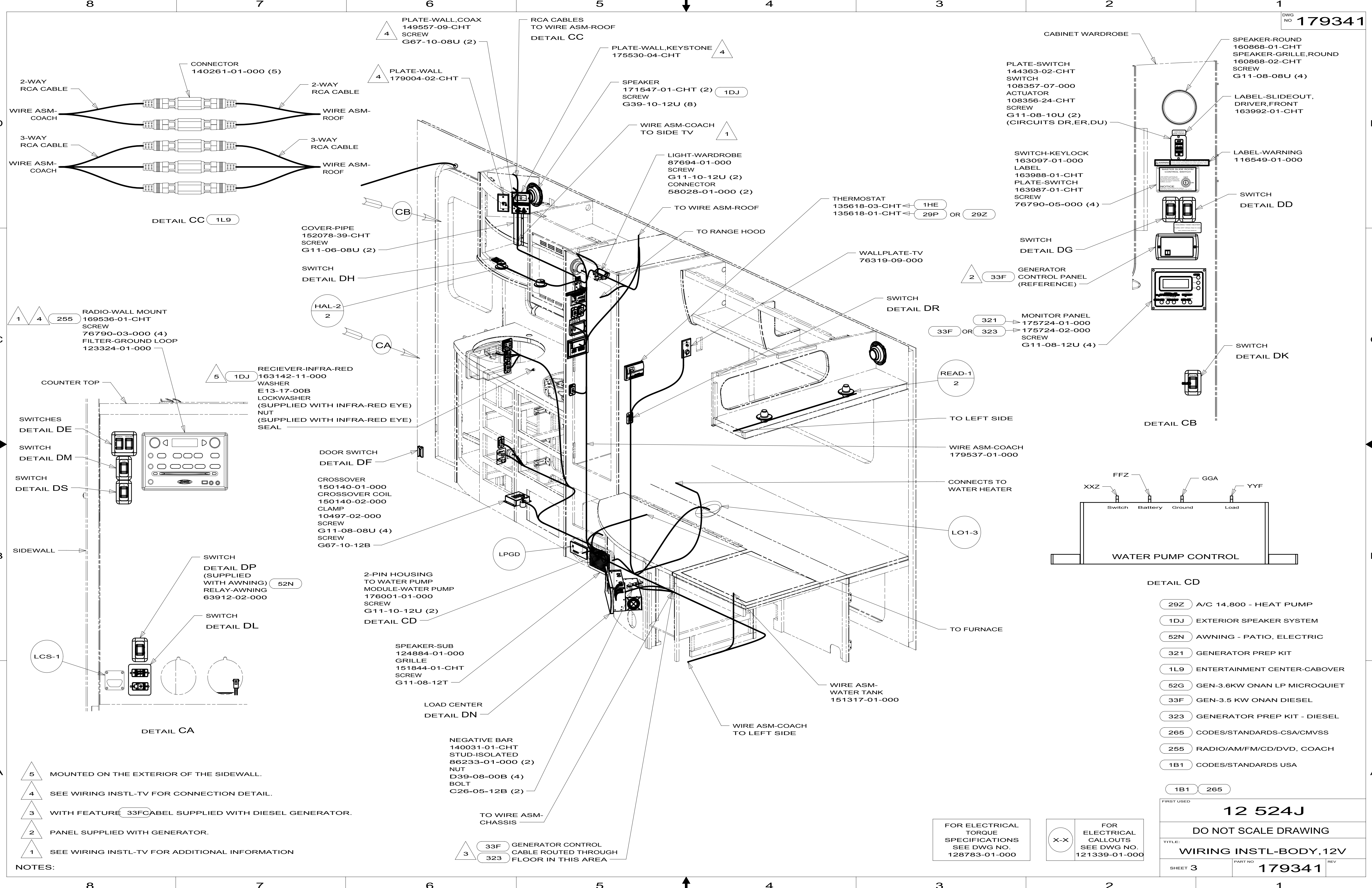
**2** WIRE ROUTED THROUGH FLOOR IN THIS AREA.

1. ROUTE TANK SENSOR WIRES SO THEY DO NOT PASS OVER SENSORS. USE WIRE TIE MOUNT 155366-01-000 AS NEEDED. TANK SURFACE MUST BE CLEANED USING ISOPROPYL ALCOHOL AND PRIME WITH PRIMER 94.

FOR ELECTRICAL TORQUE SPECIFICATIONS SEE DWG NO. 128783-01-000

FOR ELECTRICAL CALLOUTS SEE DWG NO. 121339-01-000





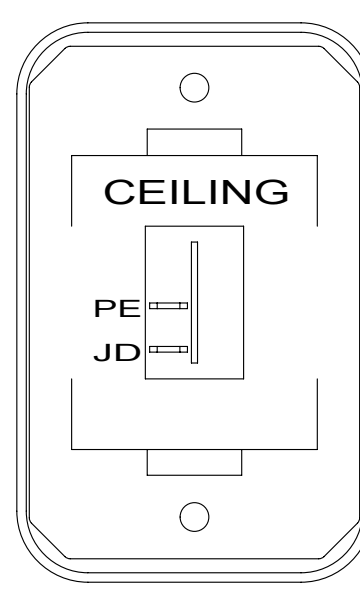
- NOTES:**
- 5 MOUNTED ON THE EXTERIOR OF THE SIDEWALL.
  - 4 SEE WIRING INSTL-TV FOR CONNECTION DETAIL.
  - 3 WITH FEATURE 33FCABEL SUPPLIED WITH DIESEL GENERATOR.
  - 2 PANEL SUPPLIED WITH GENERATOR.
  - 1 SEE WIRING INSTL-TV FOR ADDITIONAL INFORMATION

FOR ELECTRICAL TORQUE SPECIFICATIONS SEE DWG NO. 128783-01-000

X-X FOR ELECTRICAL CALLOUTS SEE DWG NO. 121339-01-000

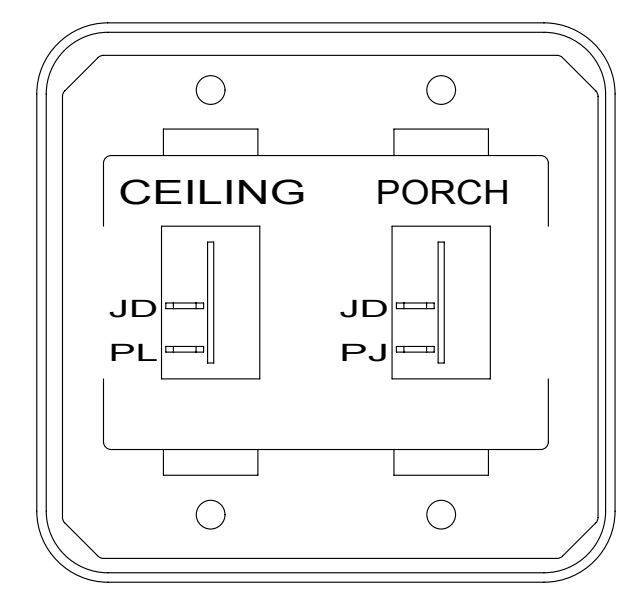
- DETAIL CD**
- 29Z A/C 14,800 - HEAT PUMP
  - 1DJ EXTERIOR SPEAKER SYSTEM
  - 52N AWNING - PATIO, ELECTRIC
  - 321 GENERATOR PREP KIT
  - 1L9 ENTERTAINMENT CENTER-CABOVER
  - 52G GEN-3.6KW ONAN LP MICROQUIET
  - 33F GEN-3.5 KW ONAN DIESEL
  - 323 GENERATOR PREP KIT - DIESEL
  - 265 CODES/STANDARDS-CSA/CMVSS
  - 255 RADIO/AM/FM/CD/DVD, COACH
  - 1B1 CODES/STANDARDS USA

FIRST USED	<b>12 524J</b>	
<b>DO NOT SCALE DRAWING</b>		
<b>WIRING INSTL-BODY, 12V</b>		
SHEET 3	PART NO. <b>179341</b>	REV



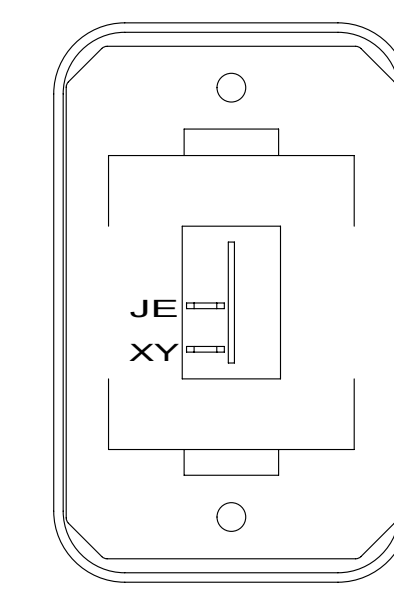
SWITCH-ROCKER  
135740-01-CHT  
SWITCH-BASE  
135741-01-CHT  
SWITCH-BEZEL  
135742-07-CHT  
SCREW  
G11-08-08U (2)

DETAIL DA



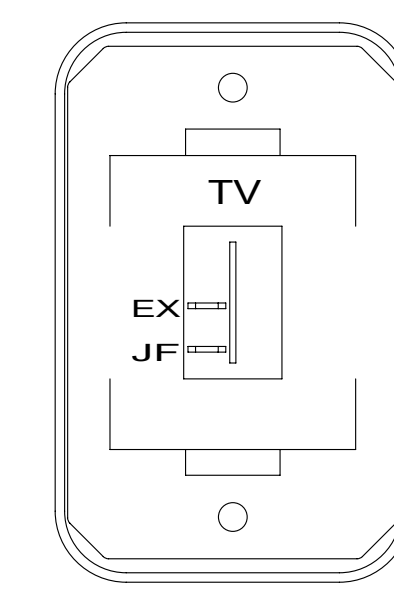
SWITCH-ROCKER  
135740-01-CHT (2)  
SWITCH-BASE  
135741-02-CHT  
SWITCH-BEZEL  
135742-19-CHT  
SCREW  
G11-08-08U (4)

DETAIL DE



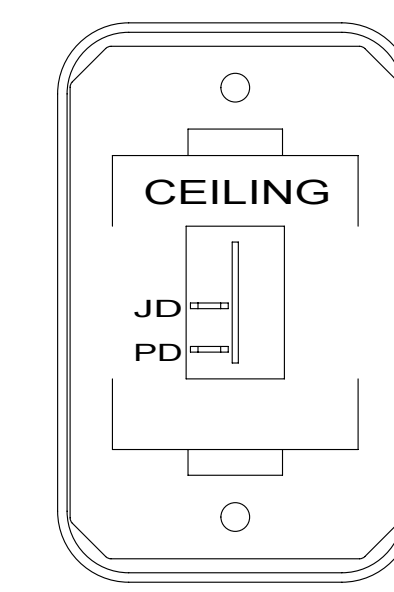
SWITCH-ROCKER  
135740-01-CHT  
SWITCH-BASE  
135741-01-CHT  
SWITCH-BEZEL  
135742-01-CHT  
SCREW  
G11-08-08U (2)

DETAIL DJ



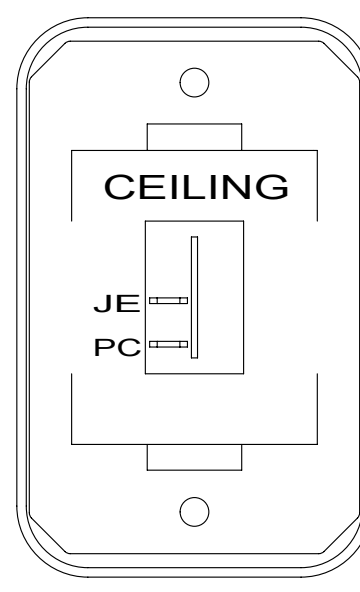
SWITCH-ROCKER  
135740-01-CHT  
SWITCH-BASE  
135741-01-CHT  
SWITCH-BEZEL  
135742-45-CHT  
SCREW  
G11-08-08U (2)

DETAIL DM (1LK)



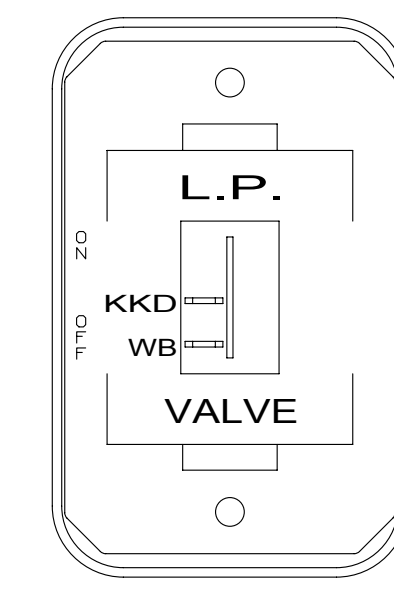
SWITCH-ROCKER  
135740-01-CHT  
SWITCH-BASE  
135741-01-CHT  
SWITCH-BEZEL  
135742-07-CHT  
SCREW  
G11-08-08U (2)

DETAIL DR



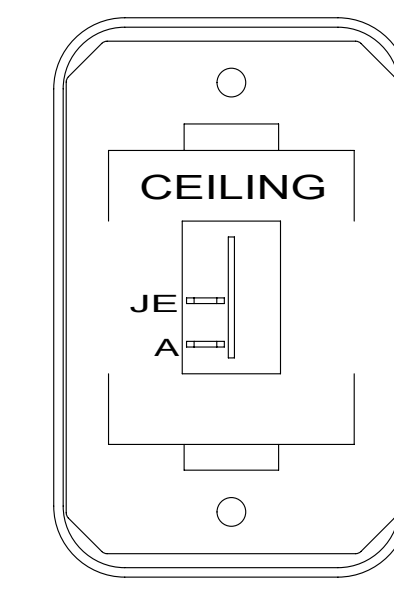
SWITCH-ROCKER  
135740-01-CHT  
SWITCH-BASE  
135741-01-CHT  
SWITCH-BEZEL  
135742-07-CHT  
SCREW  
G11-08-08U (2)

DETAIL DB



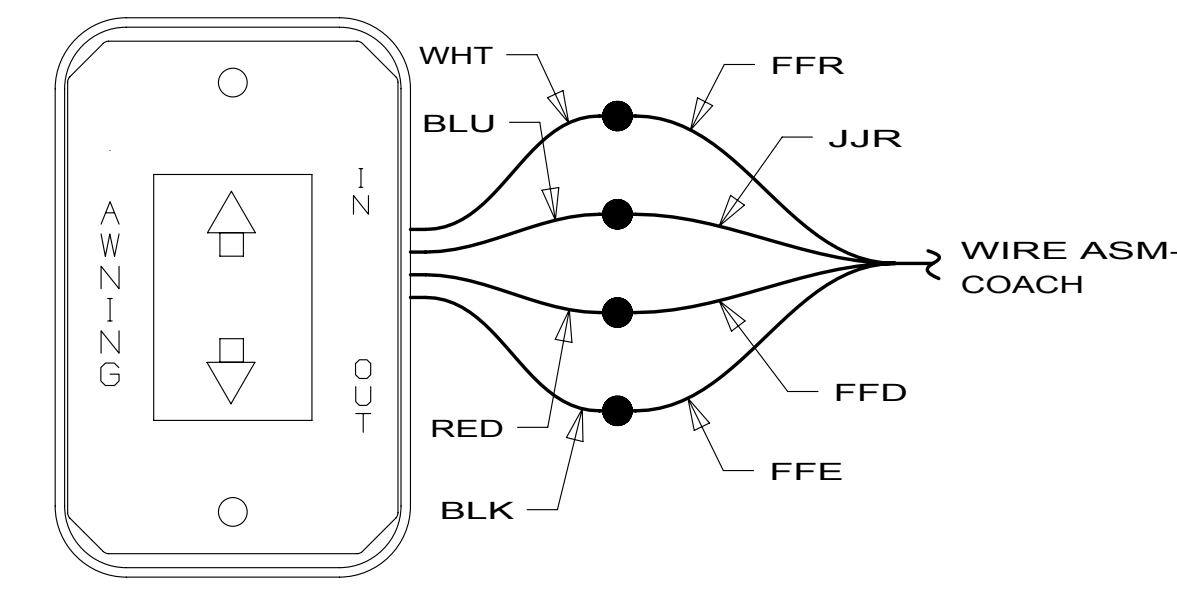
SWITCH-ROCKER  
135740-01-CHT  
SWITCH-BASE  
135741-01-CHT  
SWITCH-BEZEL  
135742-59-CHT  
SCREW  
G11-08-08U (2)

DETAIL DG

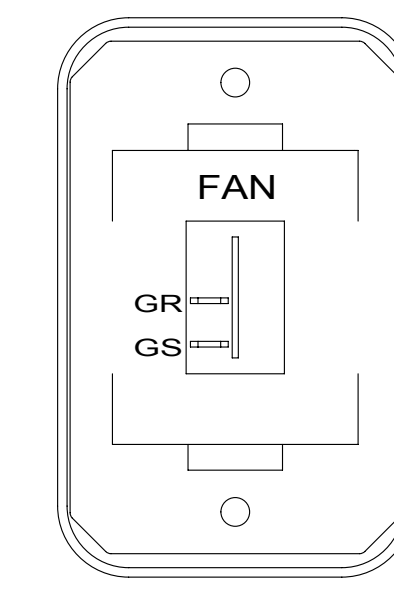


SWITCH-ROCKER  
135740-01-CHT  
SWITCH-BASE  
135741-01-CHT  
SWITCH-BEZEL  
135742-07-CHT  
SCREW  
G11-08-08U (2)

DETAIL DK

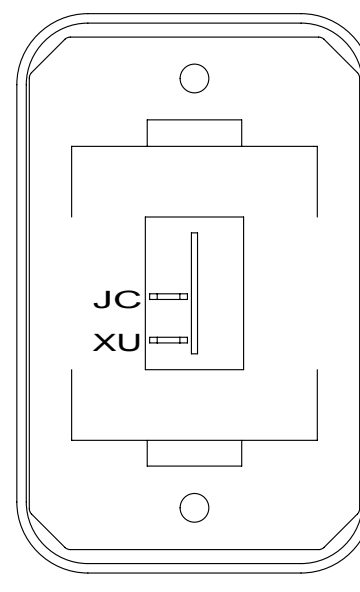


DETAIL DP (SUPPLIED WITH AWNING) (52N)



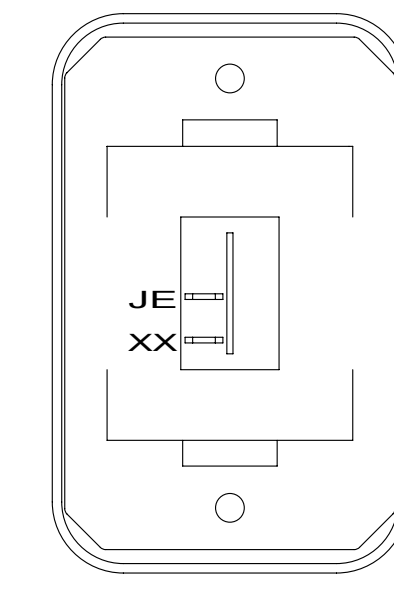
SWITCH-ROCKER  
135740-01-CHT  
SWITCH-BASE  
135741-01-CHT  
SWITCH-BEZEL  
135742-12-CHT  
SCREW  
G11-08-08U (2)

DETAIL CS



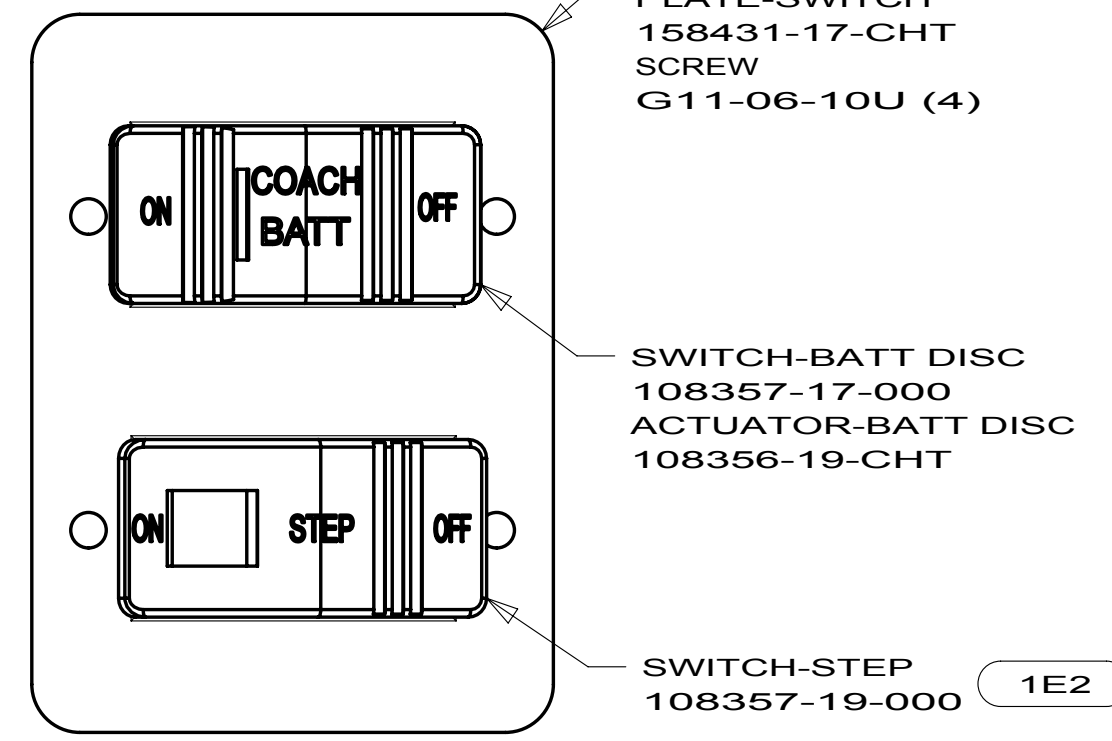
SWITCH-ROCKER  
135740-01-CHT (2)  
SWITCH-BASE  
135741-01-CHT (2)  
SWITCH-BEZEL  
135742-01-CHT (2)  
SCREW  
G11-08-08U (4)

DETAIL DC



SWITCH-ROCKER  
135740-01-CHT  
SWITCH-BASE  
135741-01-CHT  
SWITCH-BEZEL  
135742-01-CHT  
SCREW  
G11-08-08U (2)

DETAIL DH

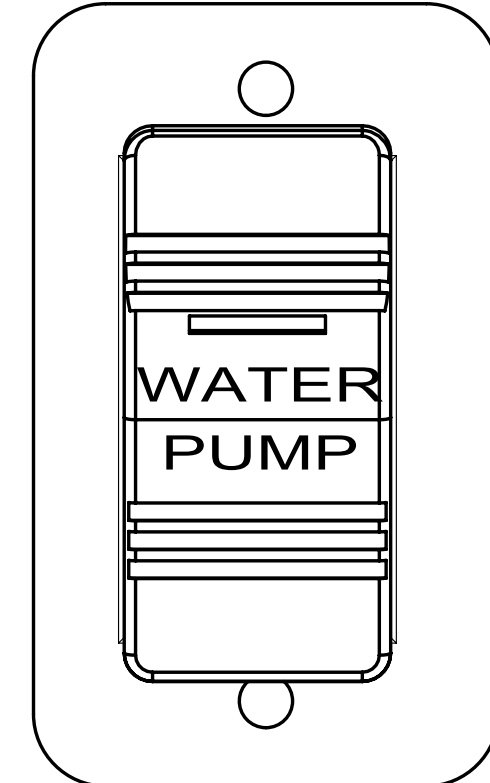


DETAIL DL

PLATE-SWITCH  
158431-17-CHT  
SCREW  
G11-06-10U (4)

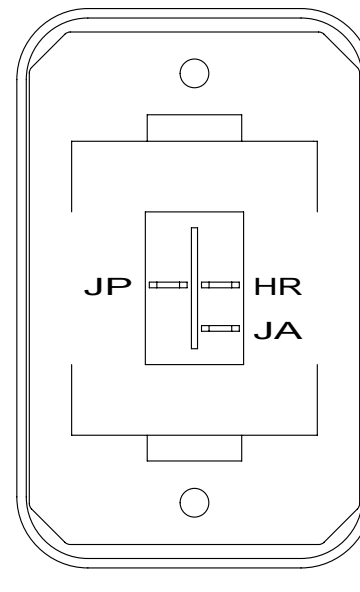
SWITCH-BATT DISC  
108357-17-000  
ACTUATOR-BATT DISC  
108356-19-CHT

SWITCH-STEP  
108357-19-000 (1E2)



DETAIL DT

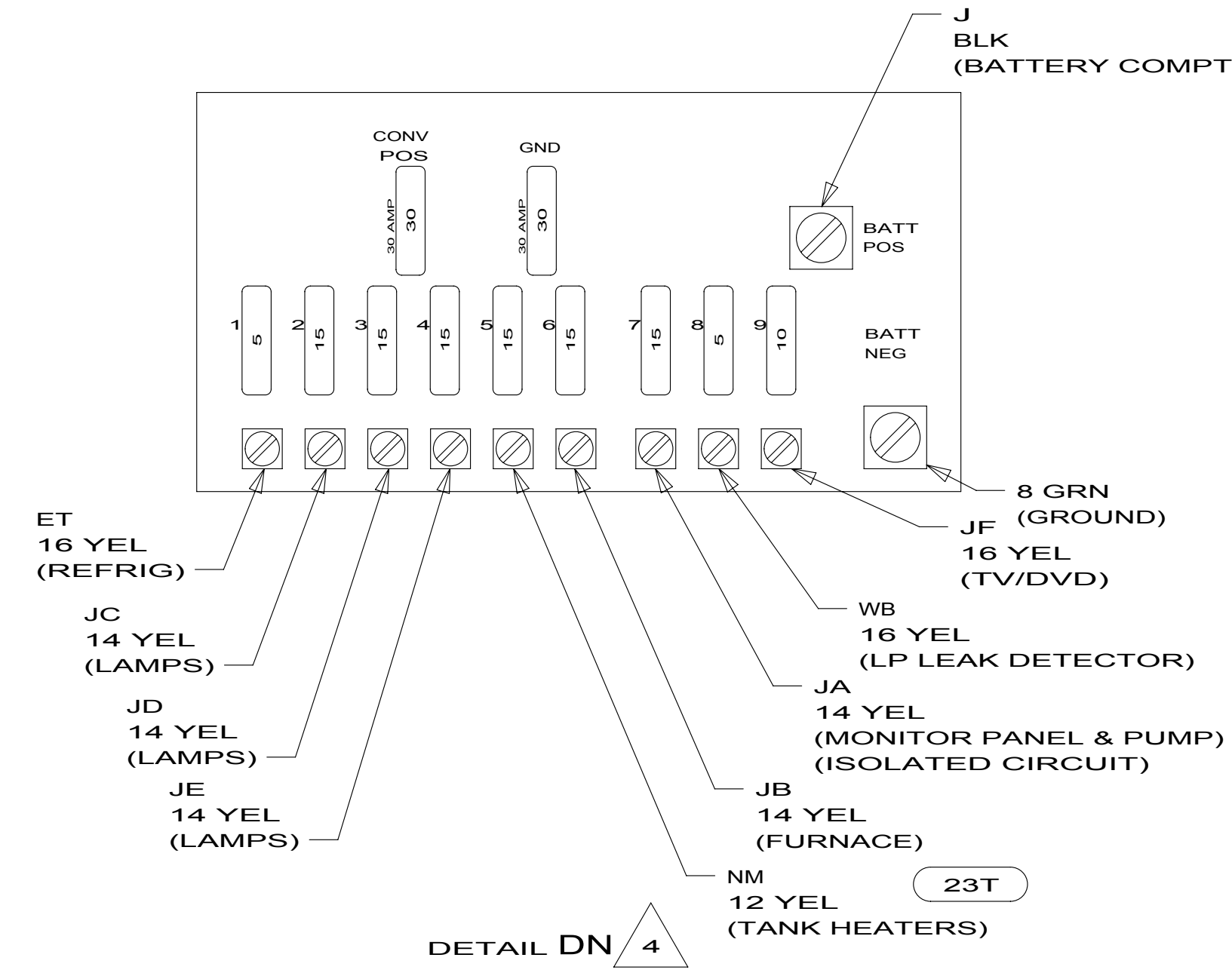
SWITCH-WATER PUMP  
108357-21-000  
ACTUATOR  
108356-23-CHT  
PLATE-SWITCH  
98351-07-CHT  
SCREW  
G11-06-10U (2)



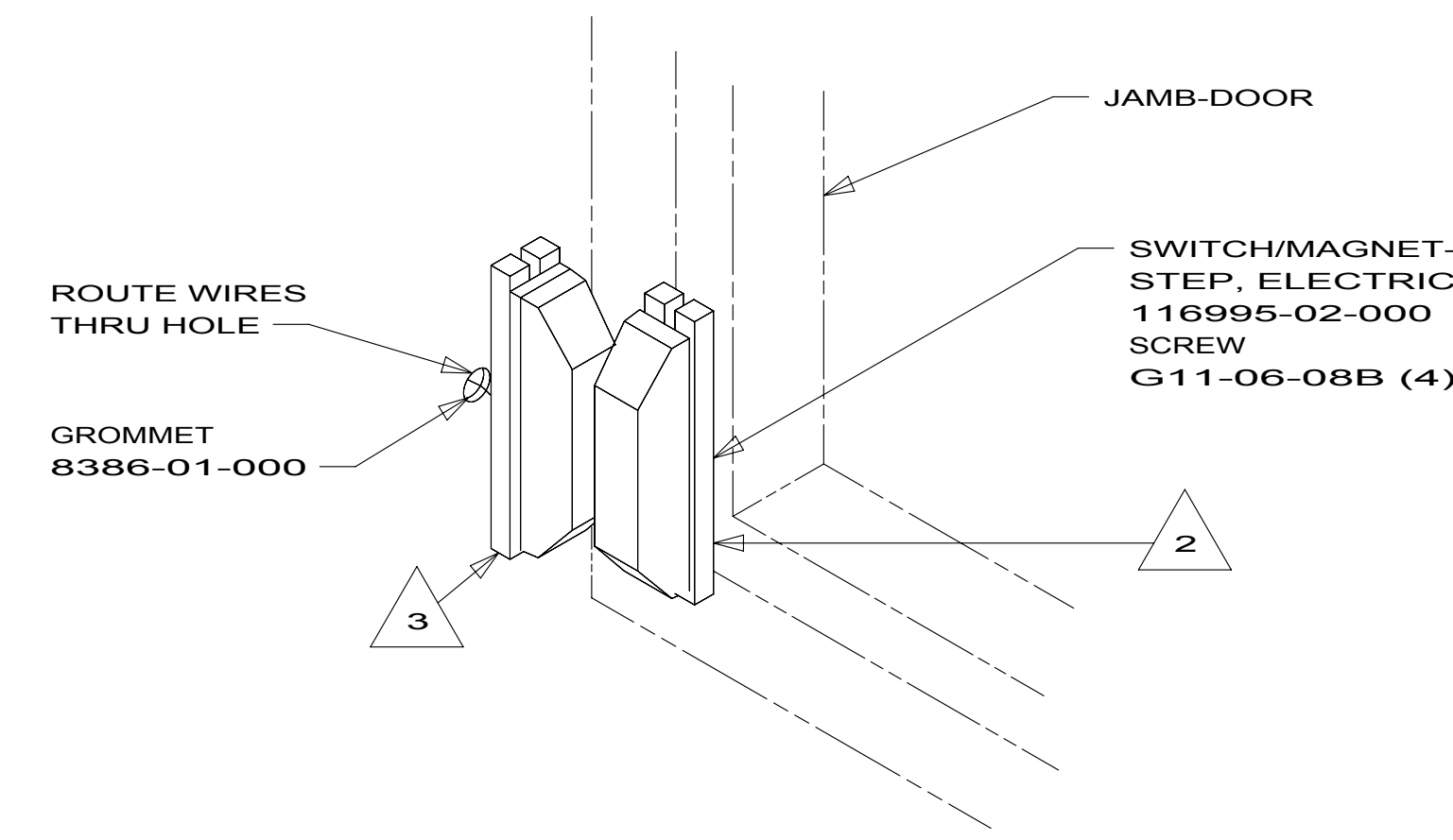
SWITCH-BLANK  
138253-01-CHT (1)  
SWITCH-ROCKER  
135740-06-CHT (23T OR 23R)  
SWITCH-BASE  
135741-01-CHT  
SWITCH-BEZEL  
135742-01-CHT  
SCREW  
G11-08-08U (2)  
LABEL-SWITCH  
134563-01-CHT (23T OR 23R)

DETAIL DD

HOLDING TANK HEATER  
TURN OFF When Not In Use  
SEE OPERATORS MANUAL



DETAIL DN (4)



DETAIL DF

ROUTE WIRES  
THRU HOLE  
GROMMET  
8386-01-000

SWITCH/MAGNET-  
STEP, ELECTRIC  
116995-02-000  
SCREW  
G11-06-08B (4)

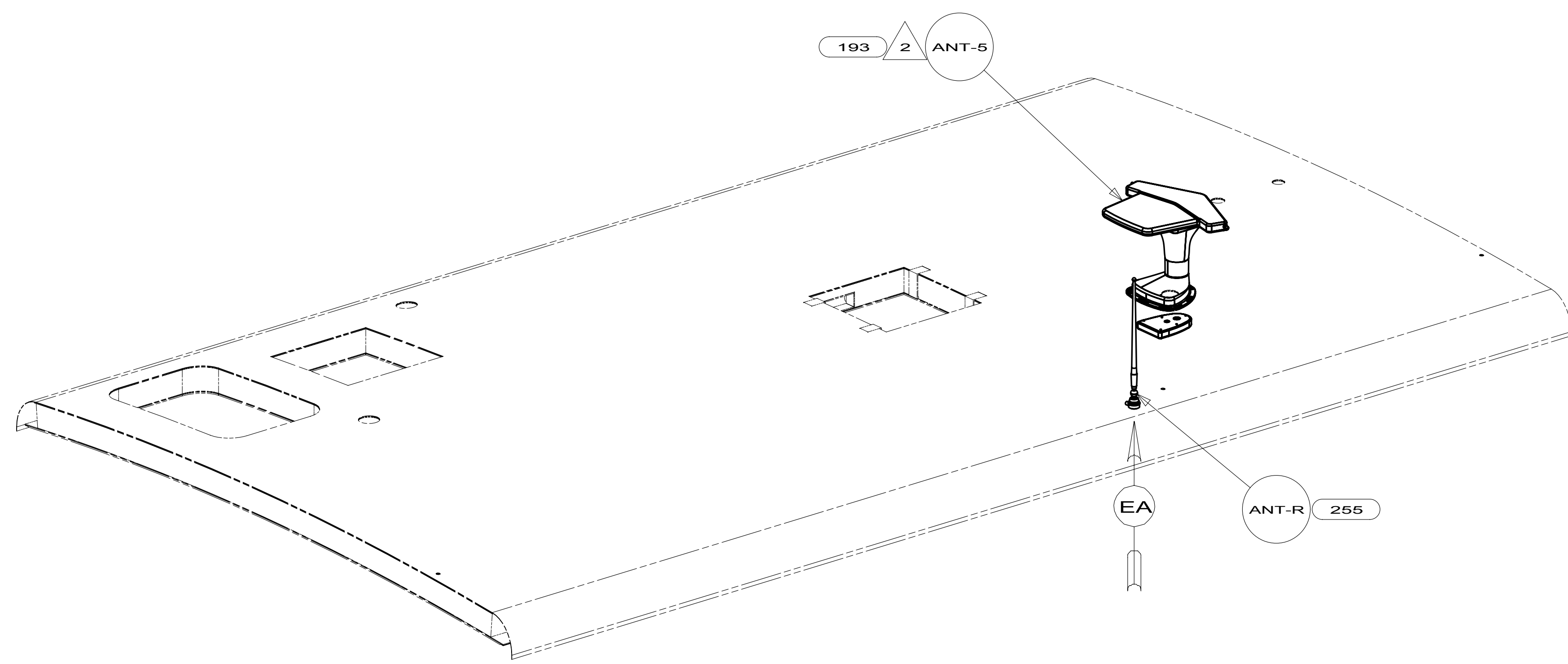
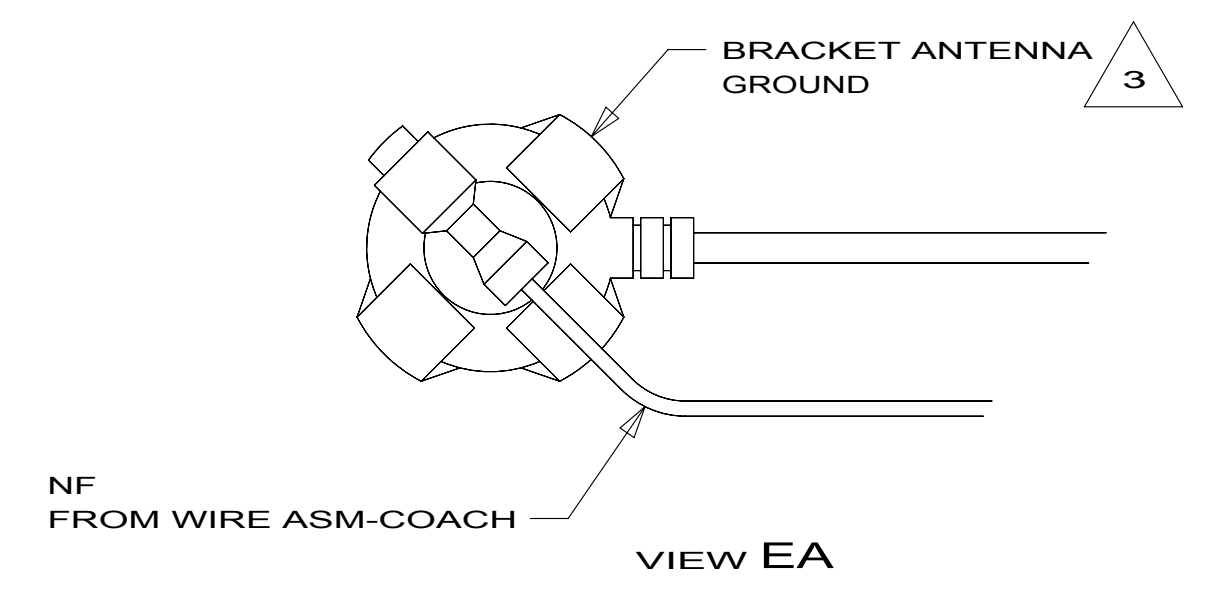
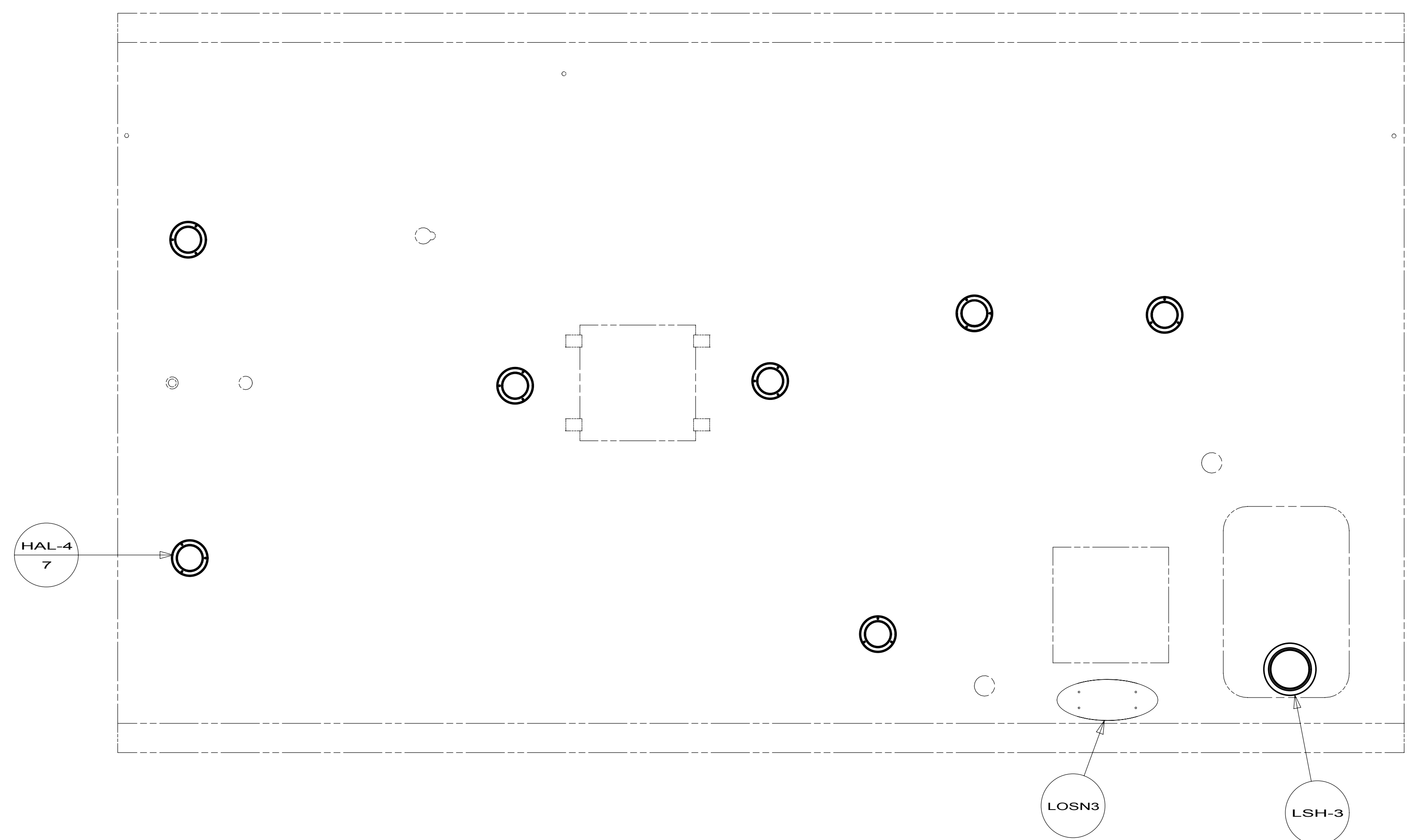
FOR ELECTRICAL  
TORQUE  
SPECIFICATIONS  
SEE DWG NO.  
128783-01-000

FOR  
ELECTRICAL  
CALLOUTS  
SEE DWG NO.  
121339-01-000

- (23R) DRAINAGE SYSTEM/HEAT-PREWIRE
- (52N) AWNING - PATIO, ELECTRIC
- (23T) DRAINAGE SYSTEM-HEATED
- (1L9) ENTERTAINMENT CENTER-CABOVER
- (1LK) TV-20"DC,COLOR,LCD W/REMOTE
- (1E2) ENTRANCE STEP-ELEC.
- (265) CODES/STANDARDS-CSA/CMVSS
- (1B1) CODES/STANDARDS USA

FIRST USED	
<b>12 524J</b>	
DO NOT SCALE DRAWING	
TITLE: <b>WIRING INSTL-BODY, 12V</b>	
SHEET 4	PART NO. <b>179341</b> REV

- NOTES:
- 4 FOR REFERENCE ONLY. SEE LOAD CENTER/ATS ASM FOR ADDITIONAL INFORMATION.
  - 3 MOUNT SWITCH AND SPACER TO BLOCK ON JAMB. ADJUST HEIGHT TO MATCH MAGNET.
  - 2 MOUNT MAGNET USING PILOT HOLES IN SCREEN DOOR FRAME. MOUNT WITH MAGNET TOWARD SWITCH.
  - 1 WITHOUT (23T) OR (23R)



- NOTES:
- 3 WRAP BRACKET LEGS AROUND ANTENNA BASE.
  - 2 SEE ANTENNA INSTALLATION MANUAL FOR CORRECT INSTALLATION PROCEDURE.
  - 1. SEE ROOF ASM FOR ADDITIONAL INFORMATION.

- 193 TV ANTENNA-AMPLIFIED SYSTEM
- 255 RADIO/AM/FM/CD/DVD, COACH
- 265 CODES/STANDARDS-CSA/CMVSS
- 1B1 CODES/STANDARDS USA

FIRST USED	<b>12 524J</b>	
<b>DO NOT SCALE DRAWING</b>		
<b>TITLE: WIRING INSTL-BODY, 12V</b>		
SHEET 5	PART NO. <b>179341</b>	REV

FOR ELECTRICAL TORQUE SPECIFICATIONS SEE DWG NO. 128783-01-000

FOR ELECTRICAL CALLOUTS SEE DWG NO. 121339-01-000

8

7

6

5

4

3

2

1

D

D

C

C

B

B

A

A

8

7

6

5

4

3

2

1