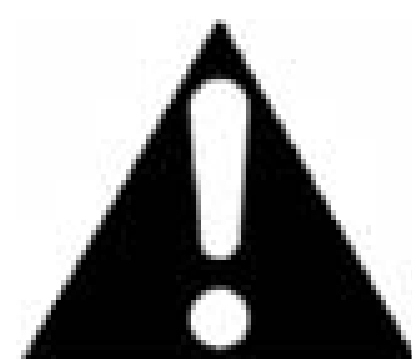




DANGER

Danger of electrical shock, burns or death. Always remove all power sources before attempting any repair, service or diagnostic work. Power can be present from shore power, generator, inverter or battery. All power sources must be disabled and secured before performing any service.



CAUTION

If you lack the skills, tools or equipment to perform diagnostic or repair work leave such work to an authorized Winnebago Industries dealer or other qualified shop.

DRAWING NO.	MODEL
177138-01	524G
177138-02	524J
177138-03	524M

RELEASE	REV DATE	DWG NO	177138
REV ZONE	A	REVISION RECORD	DATE DFR-ORIG

	524M	524J	524G
CABLE ASM-STARTER (RED)	141415-37-013	141415-37-013	141415-37-013
CABLE ASM-COACH BATTERY (YEL)	141415-52-043	141415-52-053	141415-52-043
CABLE ASM-COACH BATTERY GND (BLK)	133567-12-006	133567-12-006	133567-12-006
CABLE ASM-GENERATOR (GRN) (321)	141415-42-075	141415-42-078	141415-42-082
CABLE ASM-GENERATOR GND (BLK) (321)	133566-12-021	133566-12-021	133566-12-017
CABLE ASM-GENERATOR (GRN) (33F) OR (323)	141416-42-072	141416-42-072	141416-42-072
CABLE ASM-GENERATOR GND (BLK) (33F) OR (323)	133567-12-011	133567-12-011	133567-12-011

- (33F) GEN-3.2 KW ONAN DIESEL
- (323) GENERATOR PREP KIT - DIESEL
- (321) GENERATOR PREP KIT
- (265) CODES/STANDARDS-CSA/CMVSS
- (1B1) CODES/STANDARDS USA

WINNEBAGO INDUSTRIES

COPYRIGHT 2011 WINNEBAGO INDUSTRIES, INC.

DFTR	ORIG. DATE
CHKR	ALL DIMENSIONS ARE IN MILLIMETERS
P.E.	
M.E.	FIRST USED
DSNR	12 500-SERIES

UNSPECIFIED TOLERANCES ARE:

WHOLE DIM (X)	:	MATERIAL:
ONE-PLACE (X.X)	:	
TWO-PLACE (X.XX)	:	
ANGLE	:	

THIRD ANGLE PROJECTION

DO NOT SCALE DRAWING

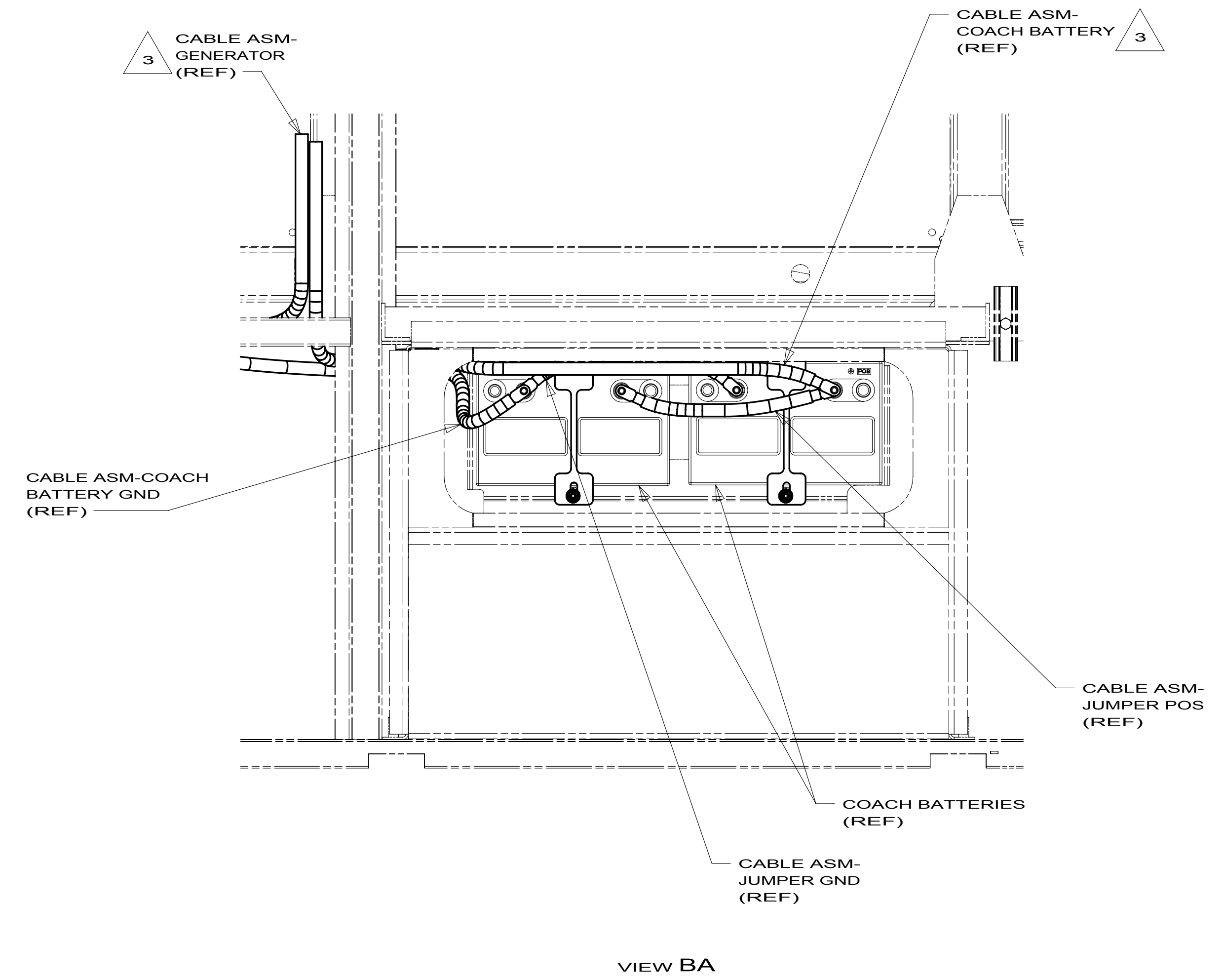
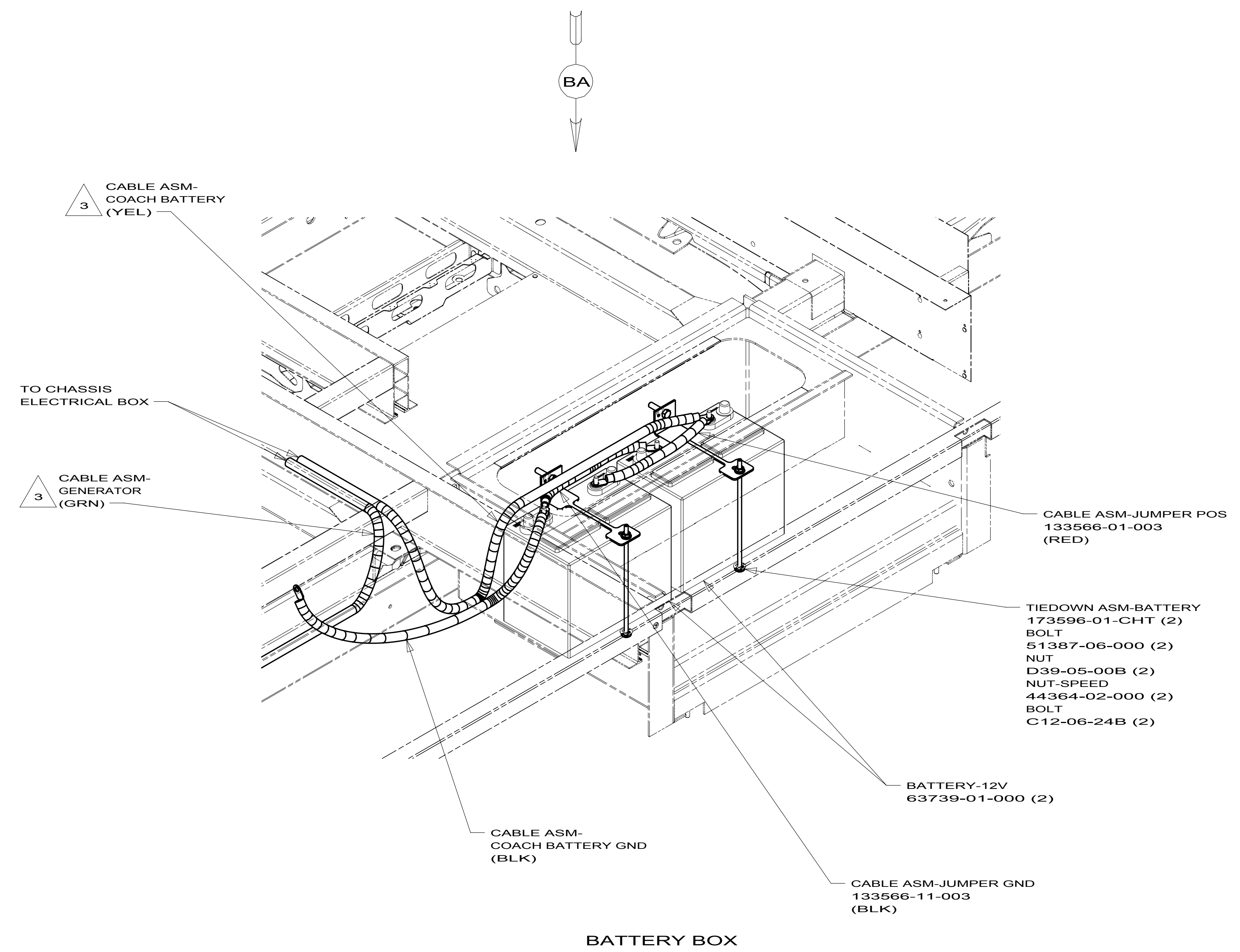
TITLE: **BATTERY INSTL**

SHEET 1 OF 2 PART NO 177138 REV 1

- NOTES:
- SEE WIRING INSTL-CHASSIS FOR ADDITIONAL INFORMATION FOR ROUTING CABLES.
 - BATTERY CABLES ARE NOT TO BE ROUTED OVER BATTERY FILL CAPS.

FOR ELECTRICAL TORQUE SPECIFICATIONS SEE DWG NO. 128783-01-000

FOR ELECTRICAL CALLOUTS SEE DWG NO. 121339-01-000



- 3 SEE WIRING INSTL-CHASSIS FOR ROUTING OF CABLE.
2. BATTERY CABLES ARE NOT TO BE ROUTED OVER BATTERY FILL CAPS.
1. CHASSIS FOR ADDITIONAL INFORMATION FOR ROUTING CABLES.
- NOTES:

FOR ELECTRICAL TORQUE SPECIFICATIONS SEE DWG NO. 128783-01-000

FOR ELECTRICAL CALLOUTS SEE DWG NO. 121339-01-000

265 CODES/STANDARDS-CSA/CMVSS
 1B1 CODES/STANDARDS USA

1B1	265
FIRST USED	
12 500-SERIES	
DO NOT SCALE DRAWING	
TITLE: BATTERY INSTL	
SHEET 2	PART NO 177138 REV