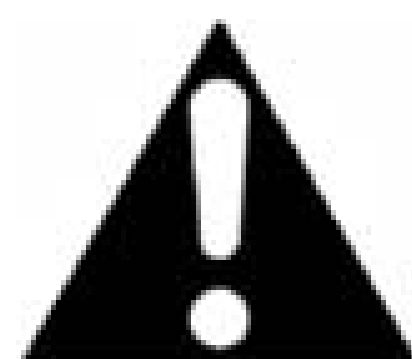




DANGER

Danger of electrical shock, burns or death. Always remove all power sources before attempting any repair, service or diagnostic work. Power can be present from shore power, generator, inverter or battery. All power sources must be disabled and secured before performing any service.



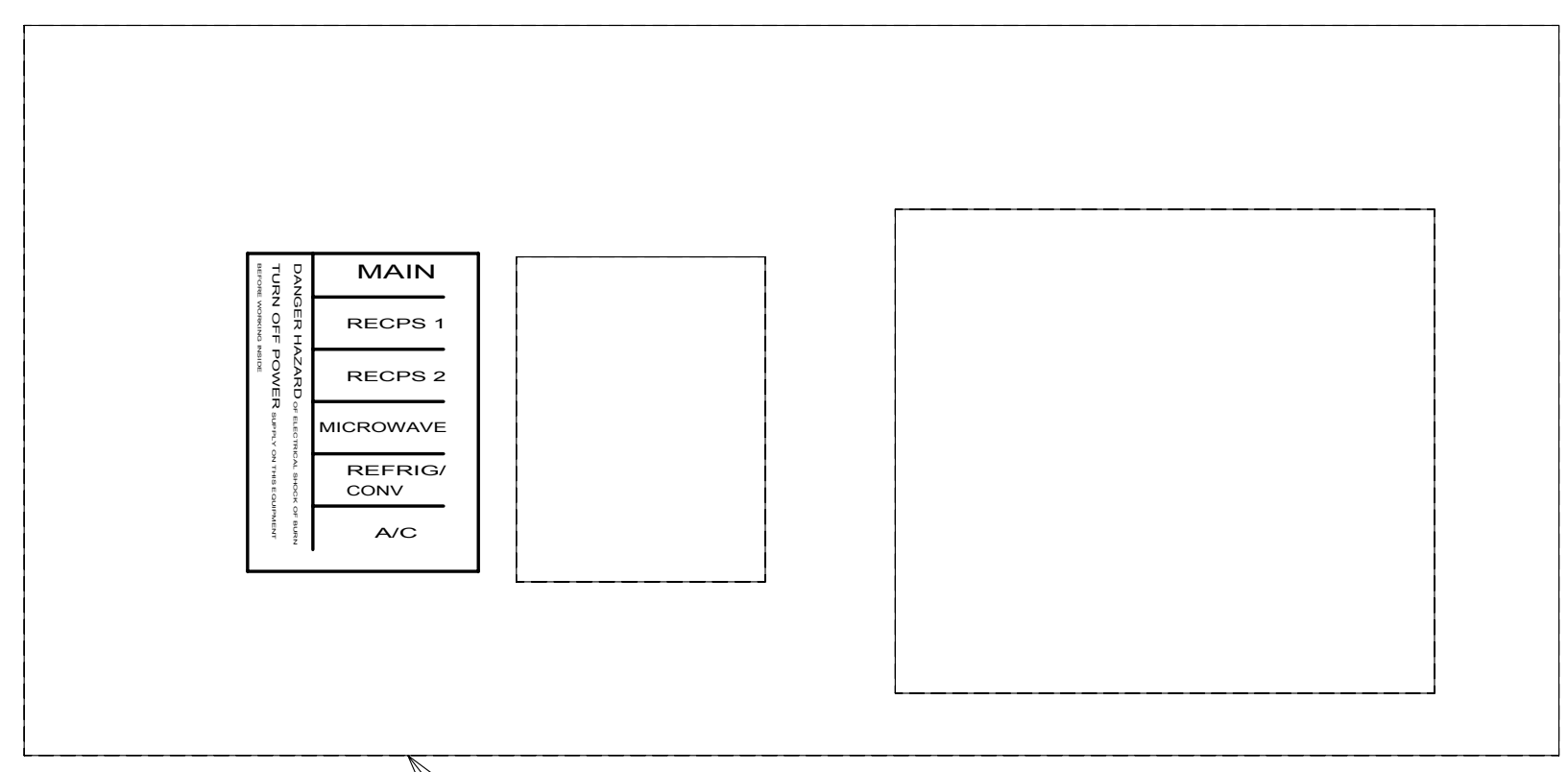
CAUTION

If you lack the skills, tools or equipment to perform diagnostic or repair work leave such work to an authorized Winnebago Industries dealer or other qualified shop.

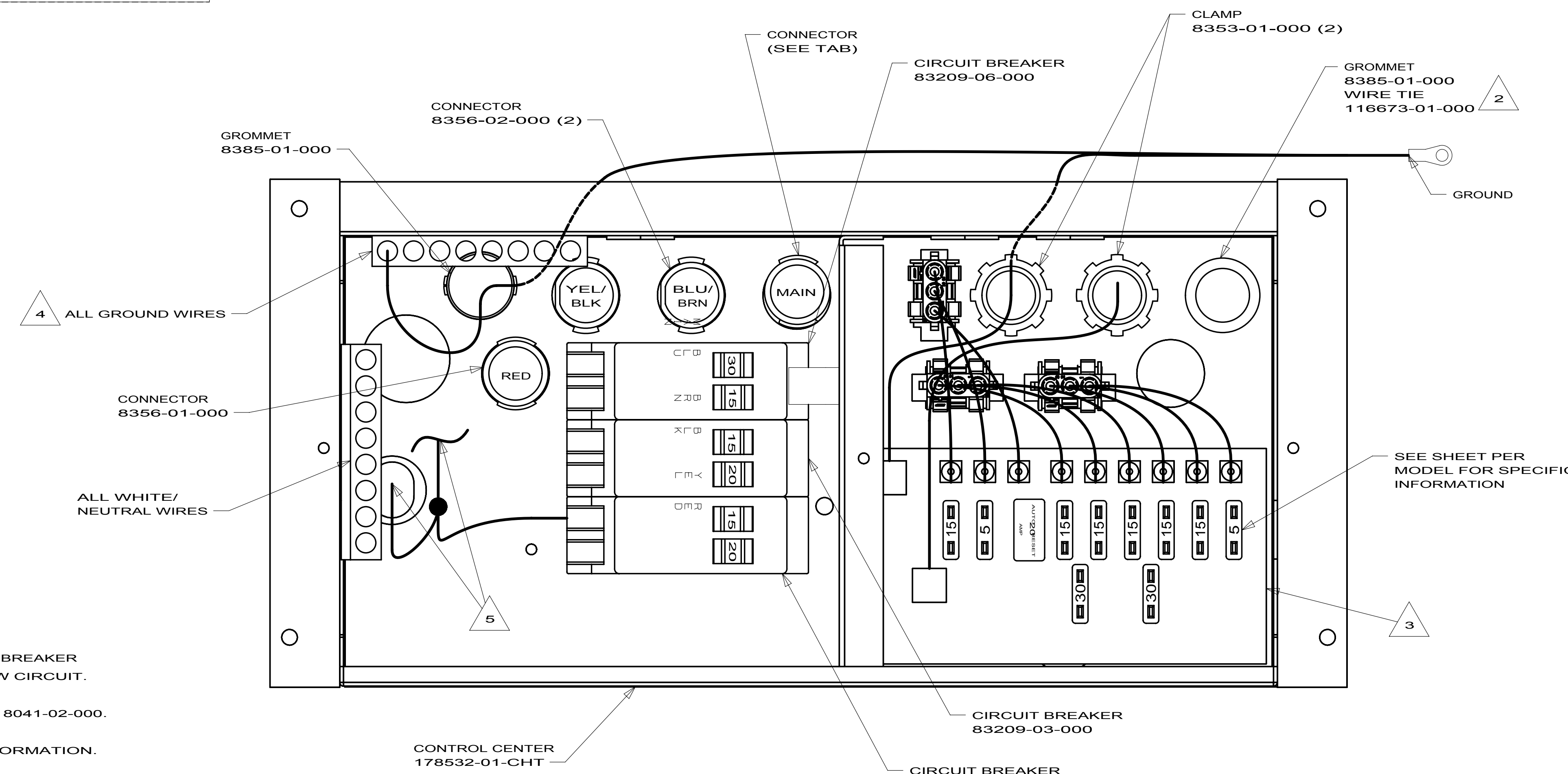
DRAWING NO.	MODEL	SHEET	CONNECTOR
177137-01	524G	1,2,3	NONE
177137-02	524M	1,2,4	008356-02-000
177137-03	524J	1,2,5	008356-02-000

		524M	524J	524G
GROUND	6-G	178545-01-015	178545-01-035	178545-01-040
WIRE ASM 110V US		177757-01-000	179556-01-000	178498-01-000
WIRE ASM 110V CA		177757-02-000	179556-02-000	178498-02-000
GENERATOR CABLE ASM	UL			164957-05-060
	CA			164957-06-060
GENERATOR CABLE ASM	UL	164957-02-042	164957-02-030	164957-02-052
	CA	164957-04-042	164957-04-030	164957-04-052
MODULE-ALS GROUND	8-G	136145-05-010	136145-05-035	136145-05-025
MAIN CABLE ASM	UL			164957-05-040
	CA			164957-06-040
THROW IN WIRE #1	UL		136131-05-015 $\triangle 6$	136131-03-022 $\triangle 6$
	CA		136134-05-015 $\triangle 6$	136134-03-022 $\triangle 6$
THROW IN WIRE #2	UL		136131-19-040 $\circ 1L9$	136131-03-003 $\triangle 6$
	CA		136134-19-040 $\circ 1L9$	136134-03-003 $\triangle 6$
THROW IN WIRE #3	UL			136131-03-025 $\triangle 6$
	CA			136134-03-025 $\triangle 6$
SLIDEOUT WIRE #1				136151-03-028 $\triangle 7$

RELEASE	REV DATE	DWG NO	177137
REV ZONE	REVISION RECORD	DATE	DFT-ORIG



PANEL COVER (REF)



- $\circ 1L9$ ENTERTAINMENT CENTER-CABOVER
- $\circ 52G$ GEN-3.6KW ONAN LP MICROQUIET
- $\circ 33F$ GEN-3.5 KW ONAN DIESEL
- $\circ 265$ CODES/STANDARDS-CSA/CMVSS
- $\circ 1B1$ CODES/STANDARDS USA

- $\triangle 7$ FOR CONNECTOR INSTALLATION SE DETAIL BC.
 - $\triangle 6$ FOR CONNECTOR INSTALLTION SEE DETAIL BB.
 - $\triangle 5$ CONNECT CONVERTER POWER CIRCUIT INTO YELLOW BREAKER AND USE SUPPLIED WIRE NUT TO CONNECT YELLOW CIRCUIT.
 - $\triangle 4$ ALL GROUND WIRE TO BE COVERED WITH TUBING 8041-02-000.
 - $\triangle 3$ SEE WIRING INSTL-BODY,12V FOR ADDITIONAL INFORMATION.
 - $\triangle 2$ INSERT GROMMET FROM THE INSIDE OF CONTROL CENTER SECURE WIRES TO BACKSIDE OF LOAD CENTER WITH WIRE TIE.
1. ALL GROUND WIRES TO BE COVERED WITH TUBING 8041-02-000.

FOR ELECTRICAL TORQUE SPECIFICATIONS SEE DWG NO. 128783-01-000

$\circ X-X$ FOR ELECTRICAL CALLOUTS SEE DWG NO. 121339-01-000

WINNEBAGO COPYRIGHT 2011 WINNEBAGO INDUSTRIES, INC.

UNSPECIFIED TOLERANCES ARE:

WHOLE DIM (X)	: 3
ONE-PLACE (X.X)	: 1.5
TWO-PLACE (X.XX)	: 0.50
ANGLE	: 1°

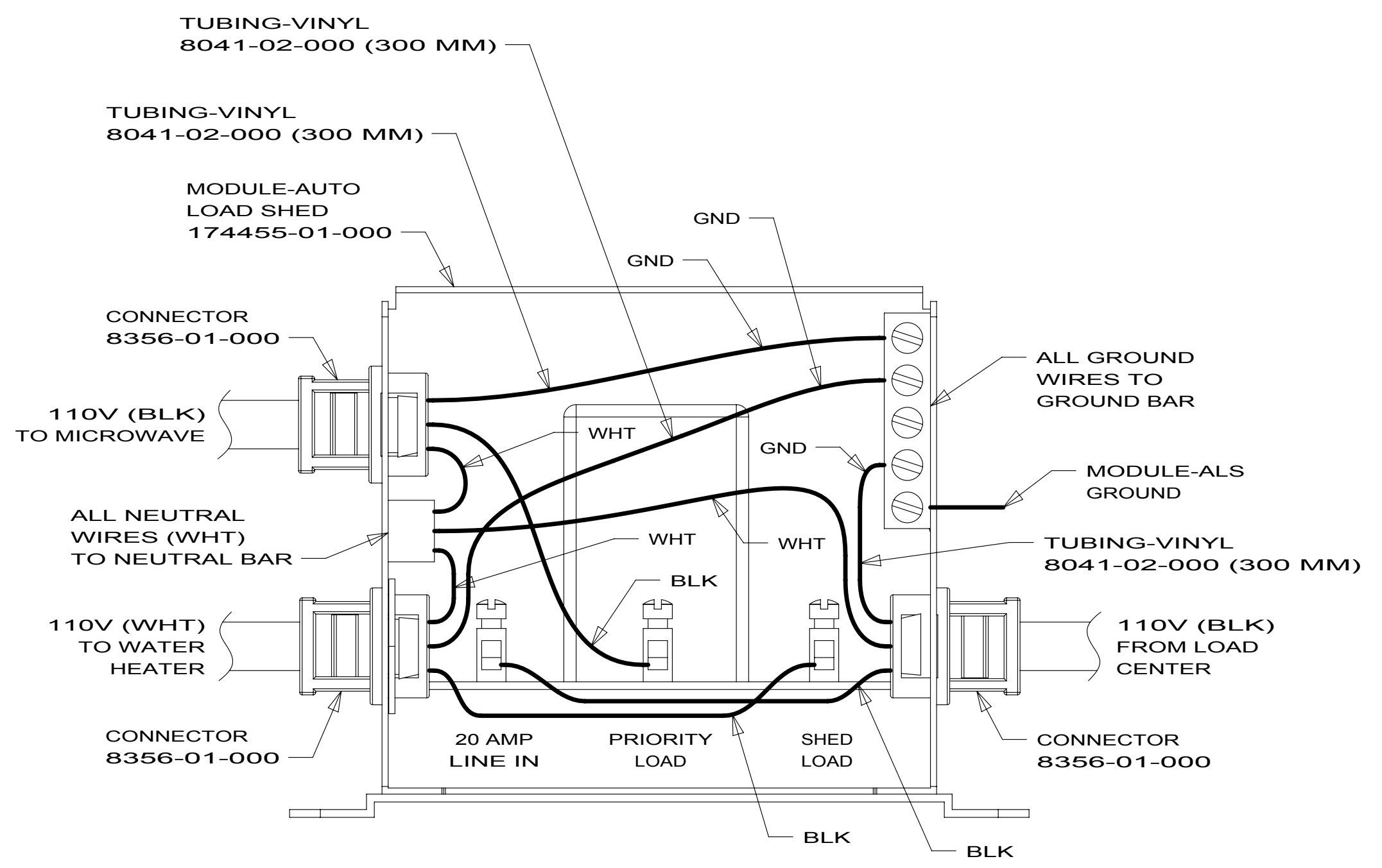
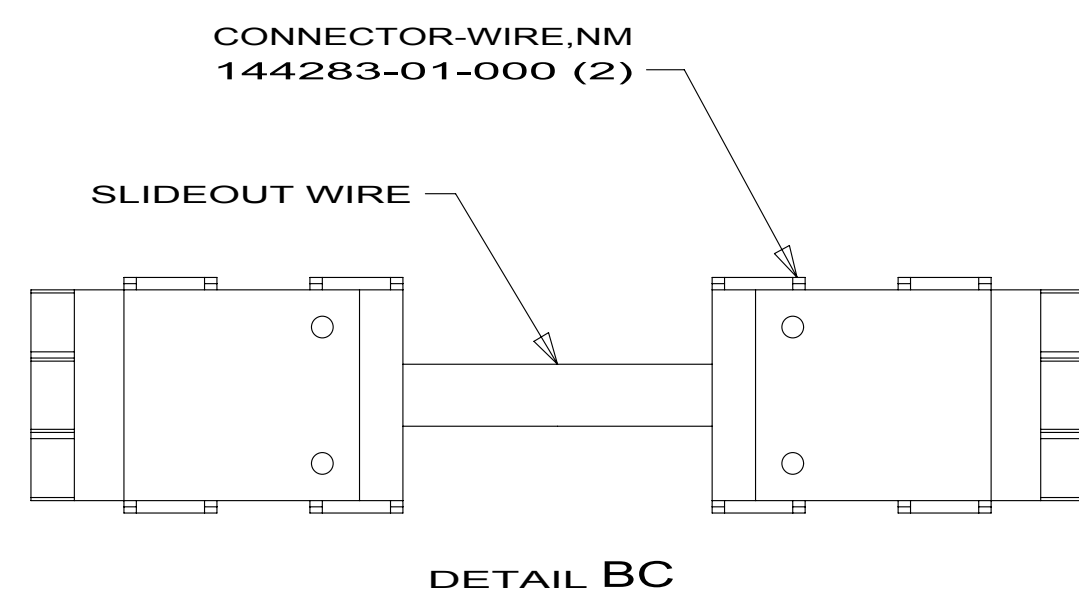
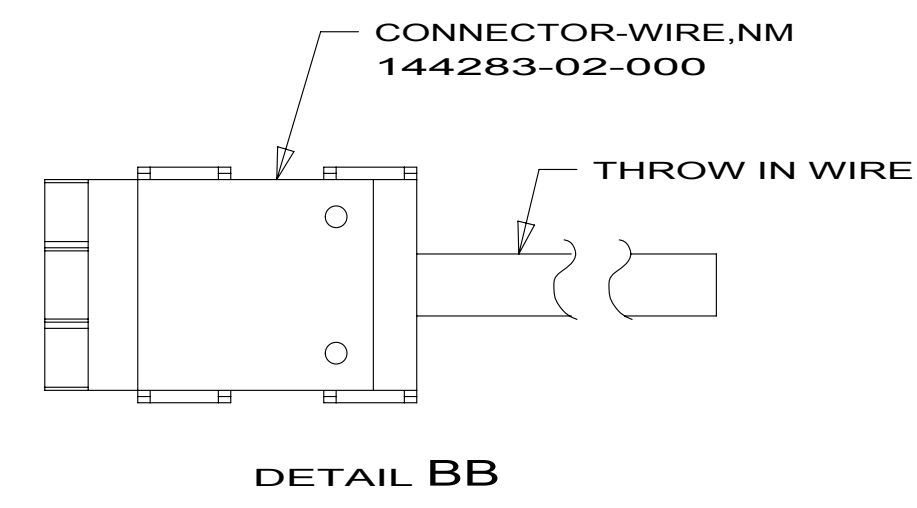
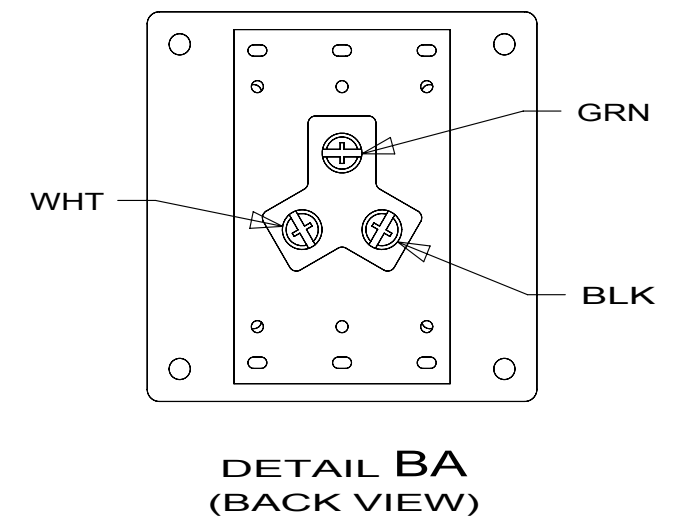
THIRD ANGLE PROJECTION

DO NOT SCALE DRAWING

TITLE: **LOAD CENTER/ATS ASM**

SHEET **1** OF **5** PART NO **177137** REV

REF: **1** 6/13/2011



265 CODES/STANDARDS-CSA/CMVSS

1B1 CODES/STANDARDS USA

1B1 265

FIRST USED
12 500-SERIES

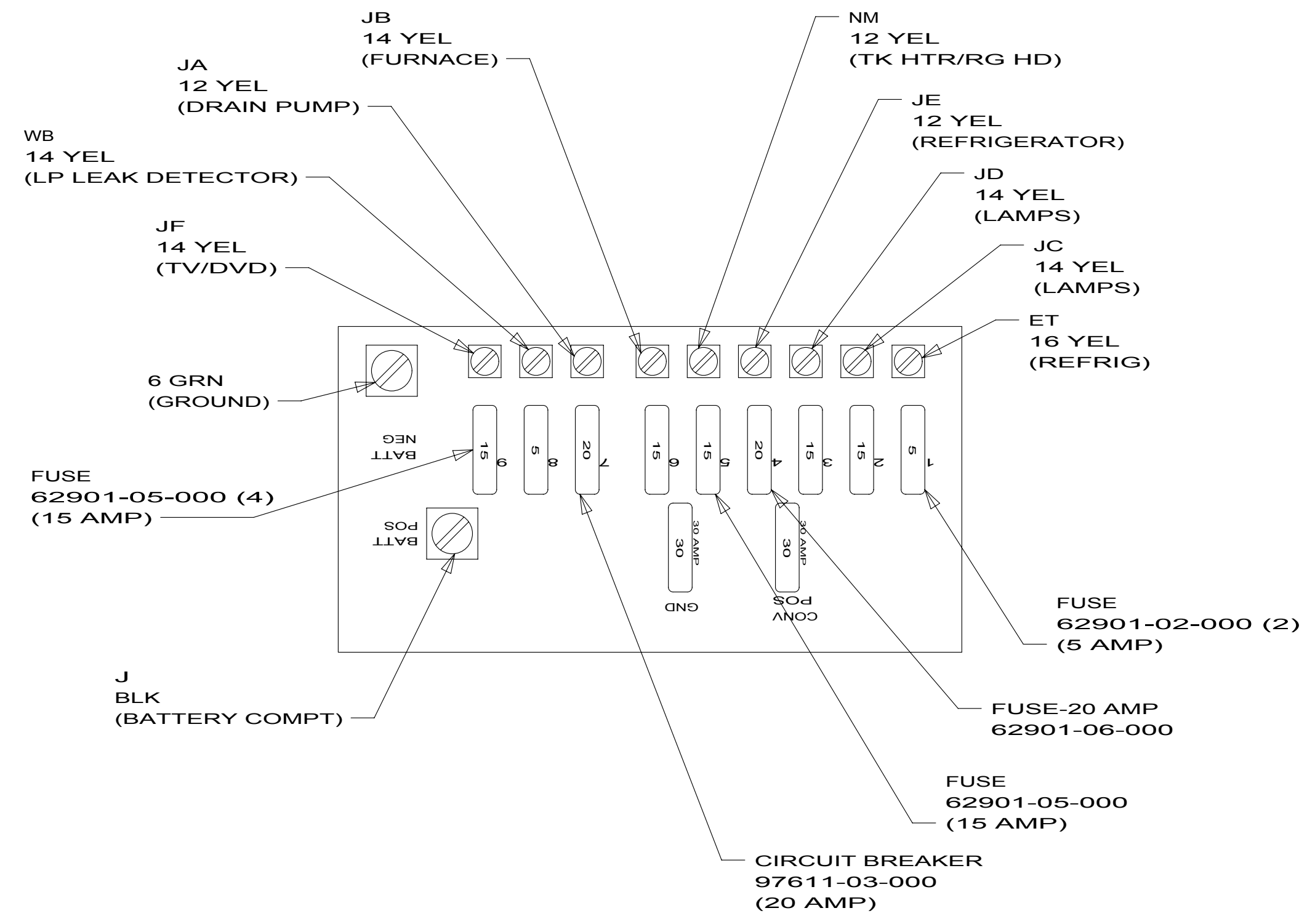
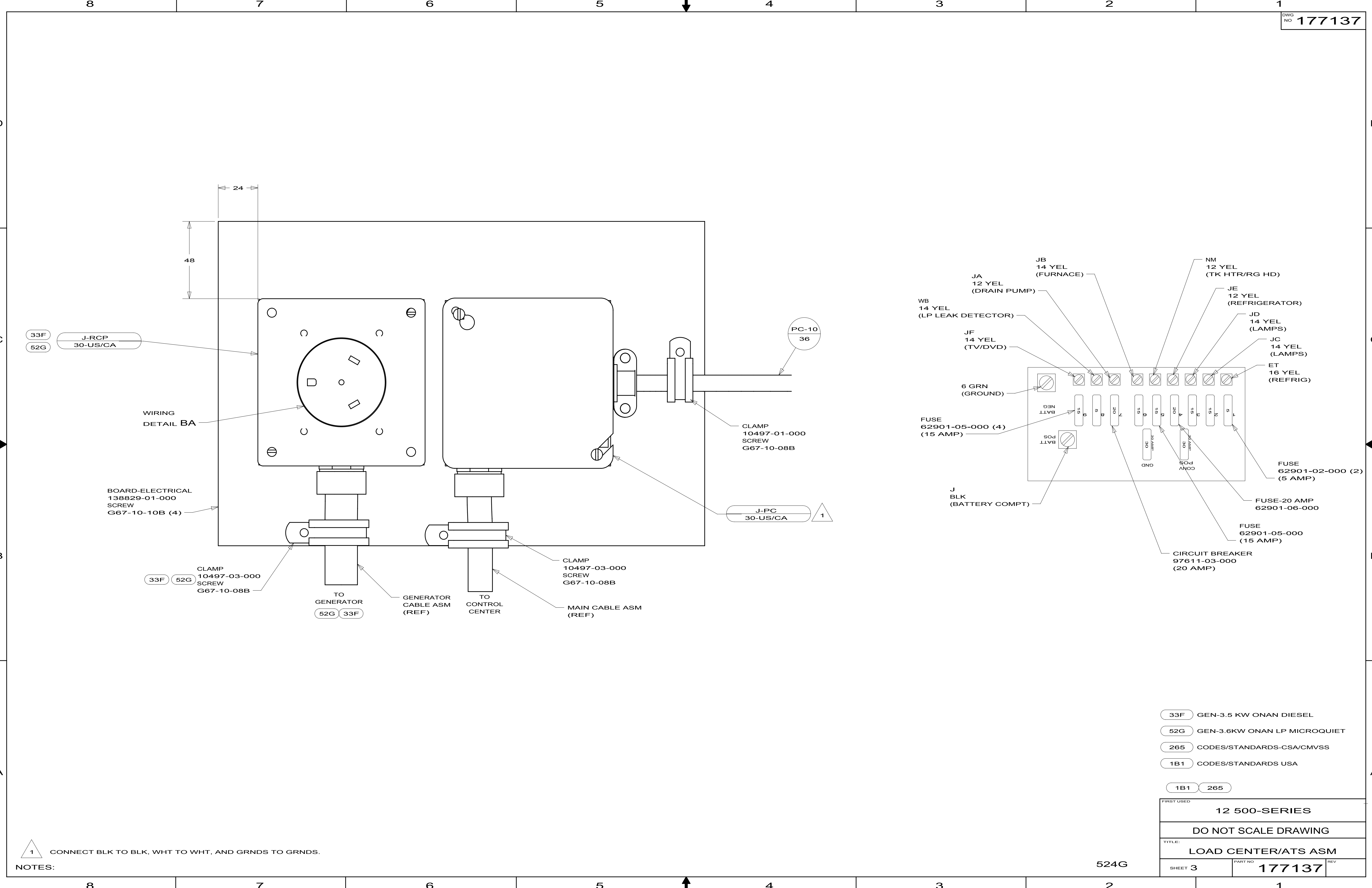
DO NOT SCALE DRAWING

TITLE:
LOAD CENTER/ATS ASM

SHEET 2 PART NO **177137** REV

FOR ELECTRICAL
TORQUE
SPECIFICATIONS
SEE DWG NO.
128783-01-000

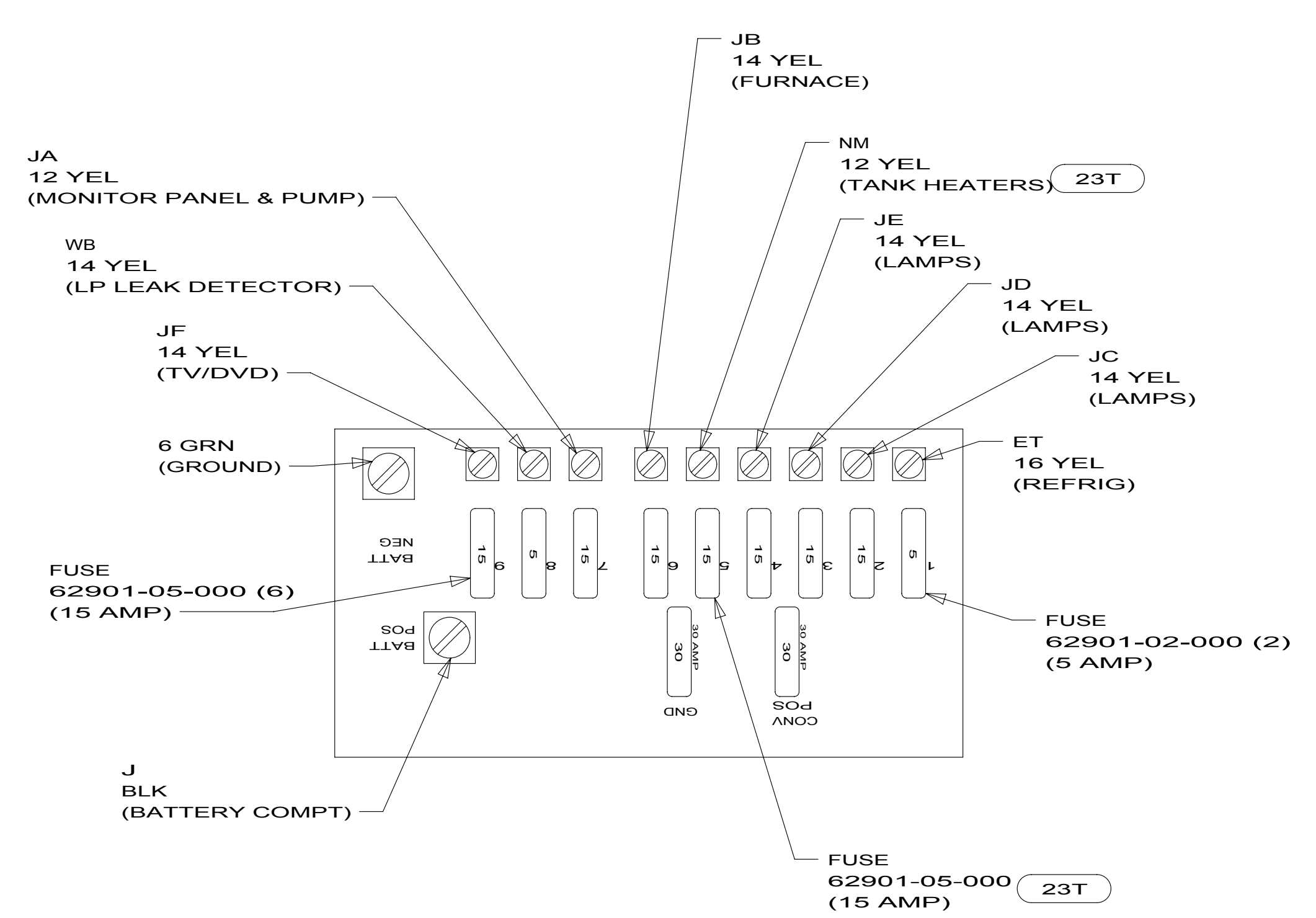
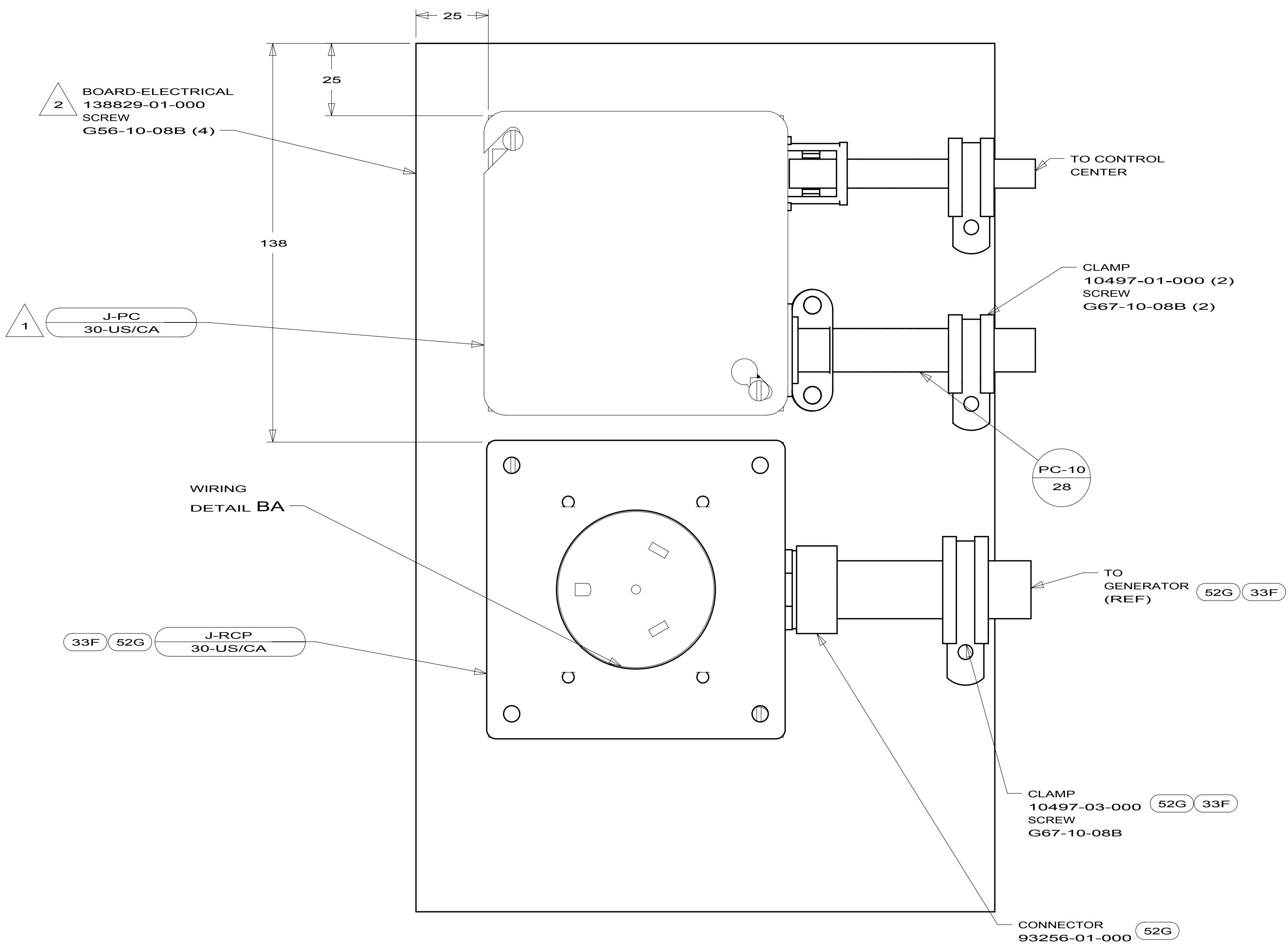
FOR
ELECTRICAL
CALLOUTS
SEE DWG NO.
121339-01-000



- 33F GEN-3.5 KW ONAN DIESEL
- 52G GEN-3.6KW ONAN LP MICROQUIET
- 265 CODES/STANDARDS-CSA/CMVSS
- 1B1 CODES/STANDARDS USA

FIRST USED	
12 500-SERIES	
DO NOT SCALE DRAWING	
TITLE:	
LOAD CENTER/ATS ASM	
SHEET 3	PART NO 177137 REV

524G

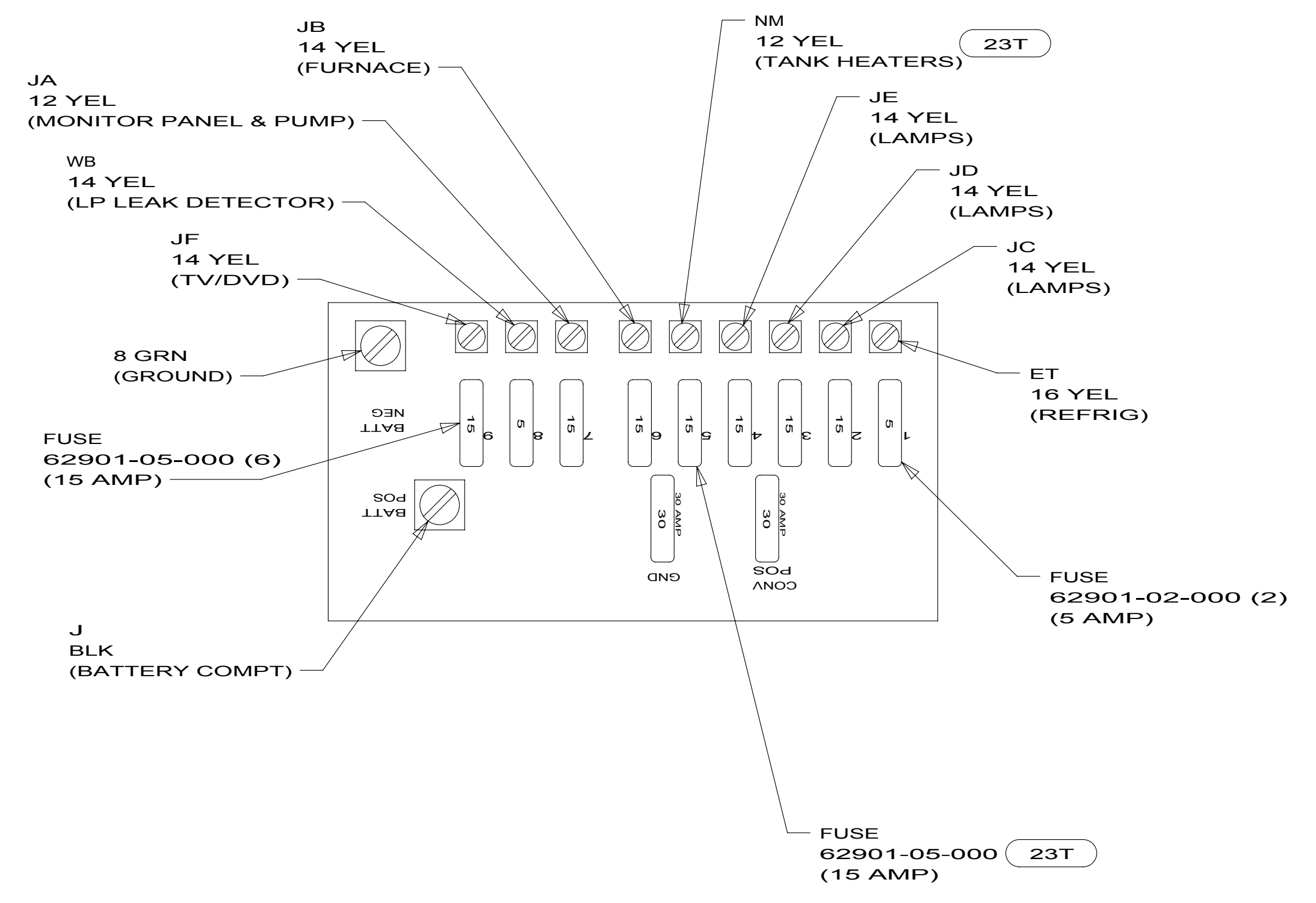
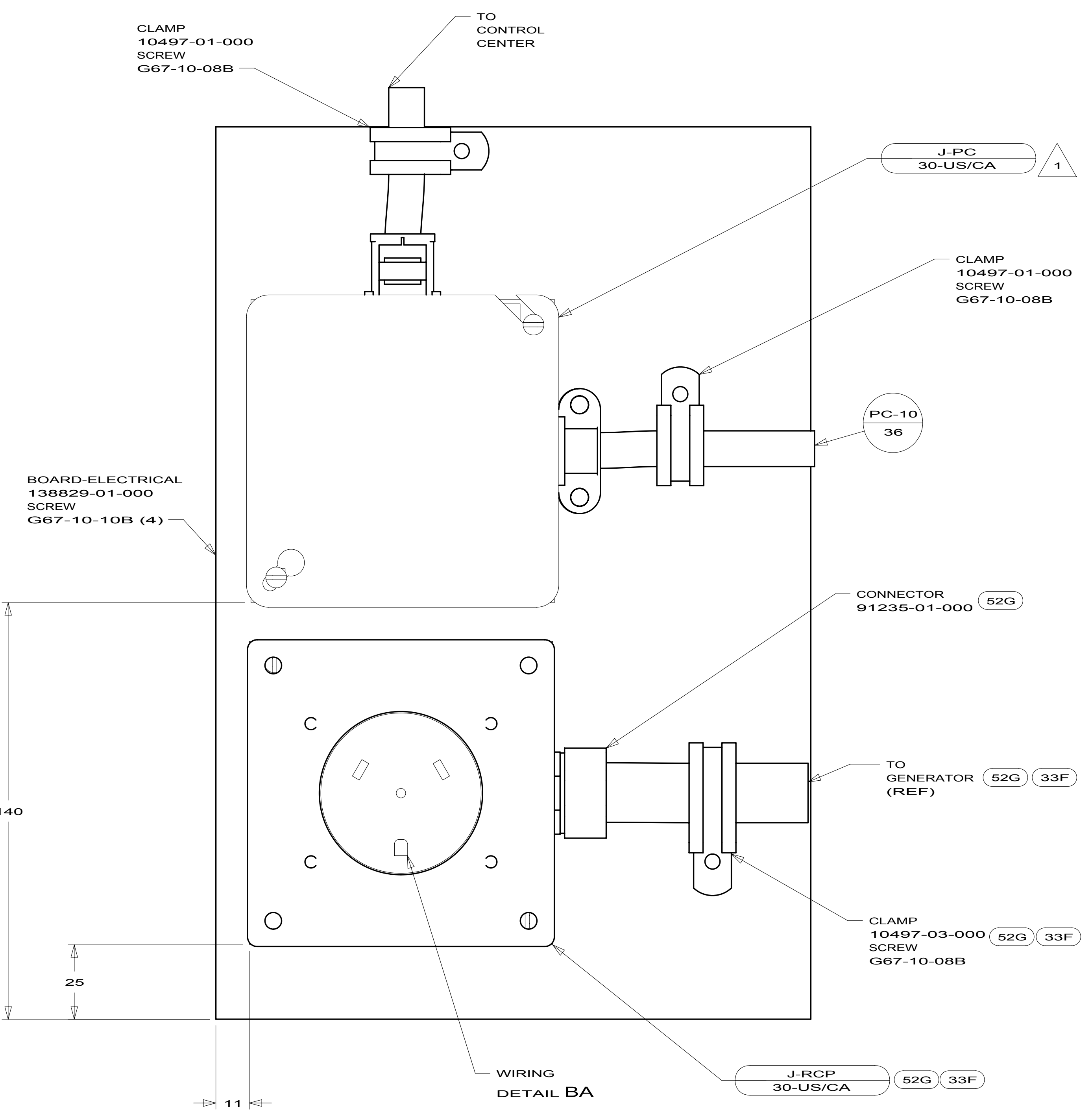


2 SCREW INTO BACKSIDE OF BOARD THRU PANEL DURING INSTALLATION.
1 CONNECT BLK TO BLK, WHT TO WHT, AND GRNDS TO GRNDS.

- 23T DRAINAGE SYSTEM-HEATED
- 33F GEN-3.5 KW ONAN DIESEL
- 52G GEN-3.6KW ONAN LP MICROQUIET
- 265 CODES/STANDARDS-CSA/CMVSS
- 1B1 CODES/STANDARDS USA
- 1B1 265

FIRST USED	
12 500-SERIES	
DO NOT SCALE DRAWING	
TITLE: LOAD CENTER/ATS ASM	
SHEET 4	PART NO 177137 REV

524M



NOTES:

1 CONNECT BLK TO BLK, WHT TO WHT, AND GRNDS TO GRNDS.

- 23T DRAINAGE SYSTEM-HEATED
- 33F GEN-3.5 KW ONAN DIESEL
- 52G GEN-3.6KW ONAN LP MICROQUIET
- 265 CODES/STANDARDS-CSA/CMVSS
- 1B1 CODES/STANDARDS USA
- 1B1 265

FIRST USED	
12 500-SERIES	
DO NOT SCALE DRAWING	
TITLE:	
LOAD CENTER/ATS ASM	
SHEET 5	PART NO 177137 REV

524J