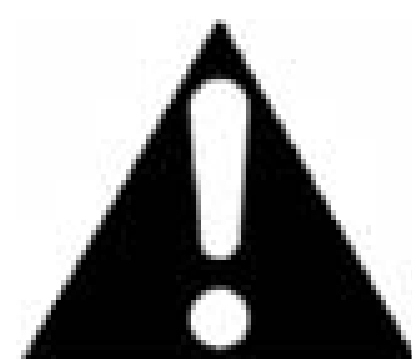




DANGER

Danger of electrical shock, burns or death. Always remove all power sources before attempting any repair, service or diagnostic work. Power can be present from shore power, generator, inverter or battery. All power sources must be disabled and secured before performing any service.

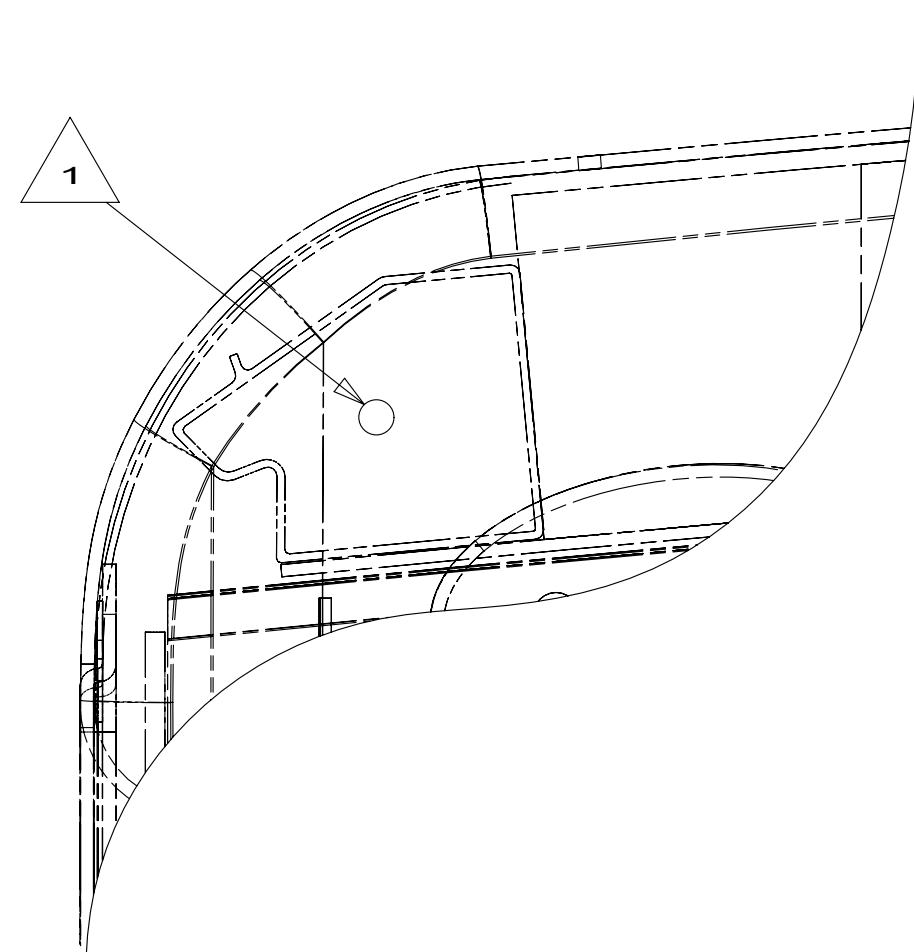
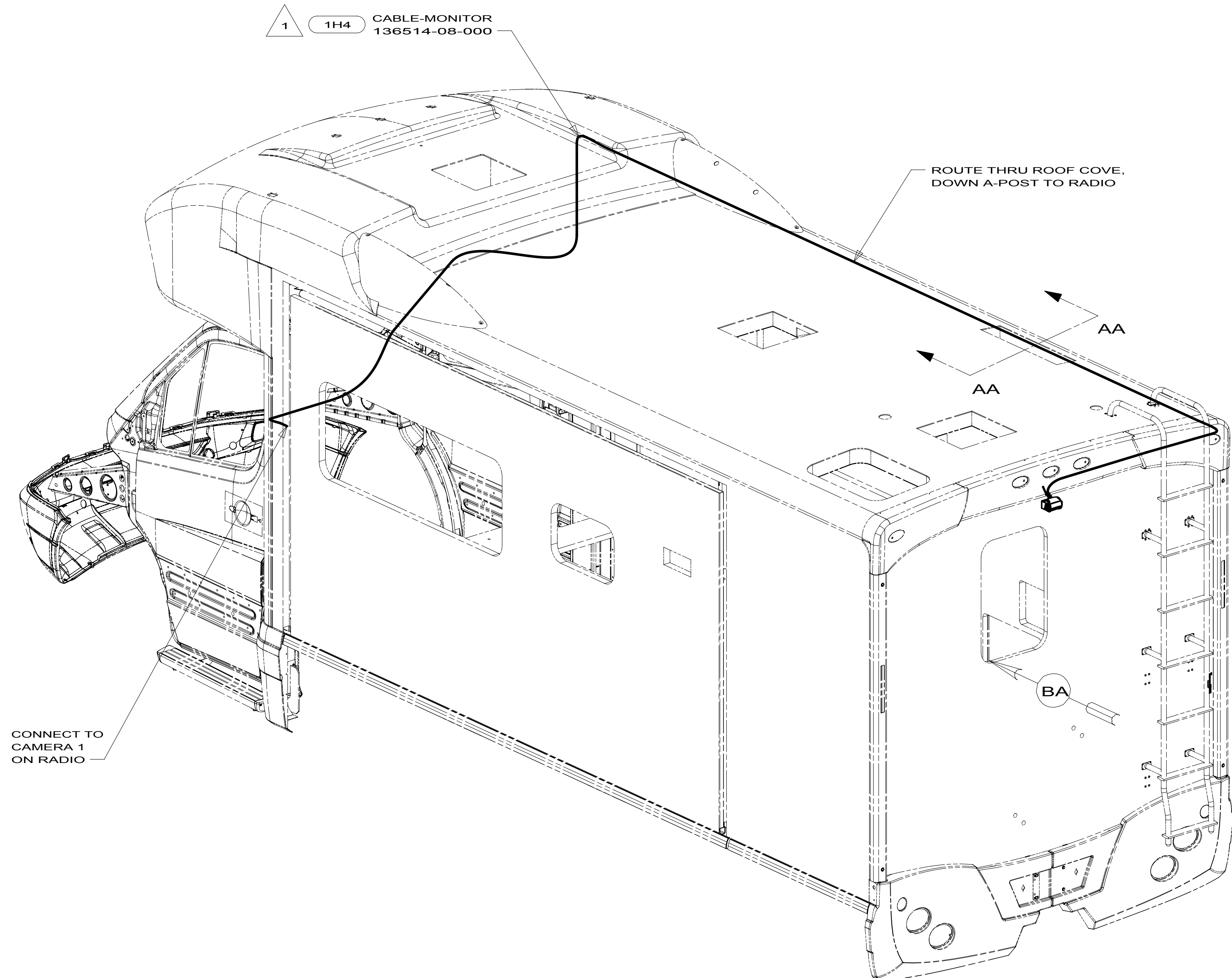


CAUTION

If you lack the skills, tools or equipment to perform diagnostic or repair work leave such work to an authorized Winnebago Industries dealer or other qualified shop.

DRAWING NO.	MODEL	SHEETS
175554-01	524K,524J,524A	1,2
175554-02	524G	3,4

RELEASE	REV DATE	DWG NO	175554
REV ZONE	REVISION RECORD	DATE	DTR-ORIG



SECTION AA-AA

- 1H4 REARVIEW MONITOR-WIRE PREP
- 19R RADIO/REARVIEW MONITOR SYS
- 265 CODES/STANDARDS-CSA/CMVSS
- 1B1 CODES/STANDARDS USA

- 1B1 265 19R



DTR	ORIG. DATE
CHKR	ALL DIMENSIONS ARE IN MILLIMETERS
P.E.	
M.E.	FIRST USED
DSNR	11 500-SERIES
UNSPECIFIED TOLERANCES ARE:	
WHOLE DIM (X)	: 3
ONE-PLACE (X.X)	: 1.5
TWO-PLACE (X.XX)	: 0.50
ANGLE	: 1°
THIRD ANGLE PROJECTION	

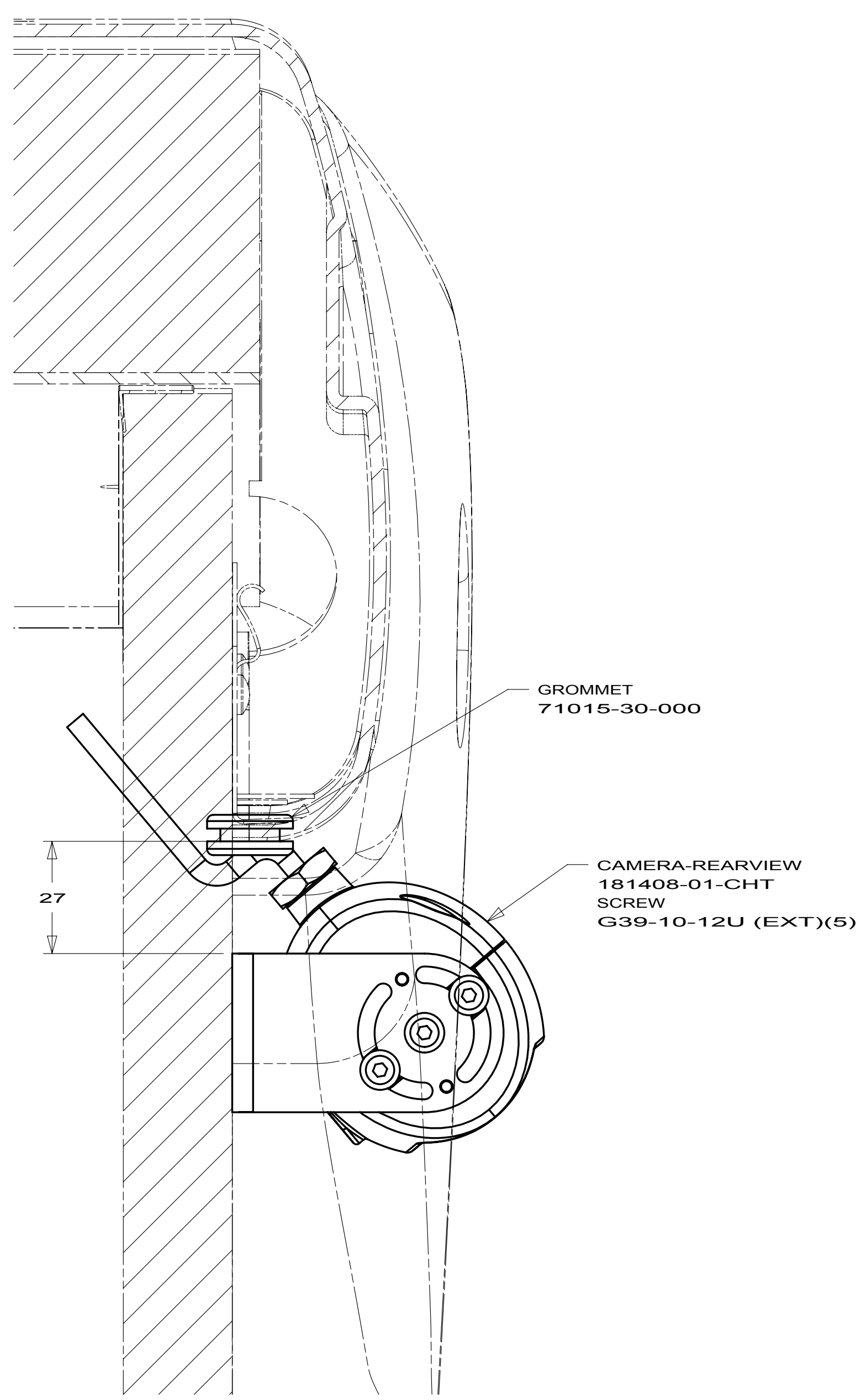
FOR ELECTRICAL TORQUE SPECIFICATIONS SEE DWG NO. 128783-01-000

FOR ELECTRICAL CALLOUTS SEE DWG NO. 121339-01-000

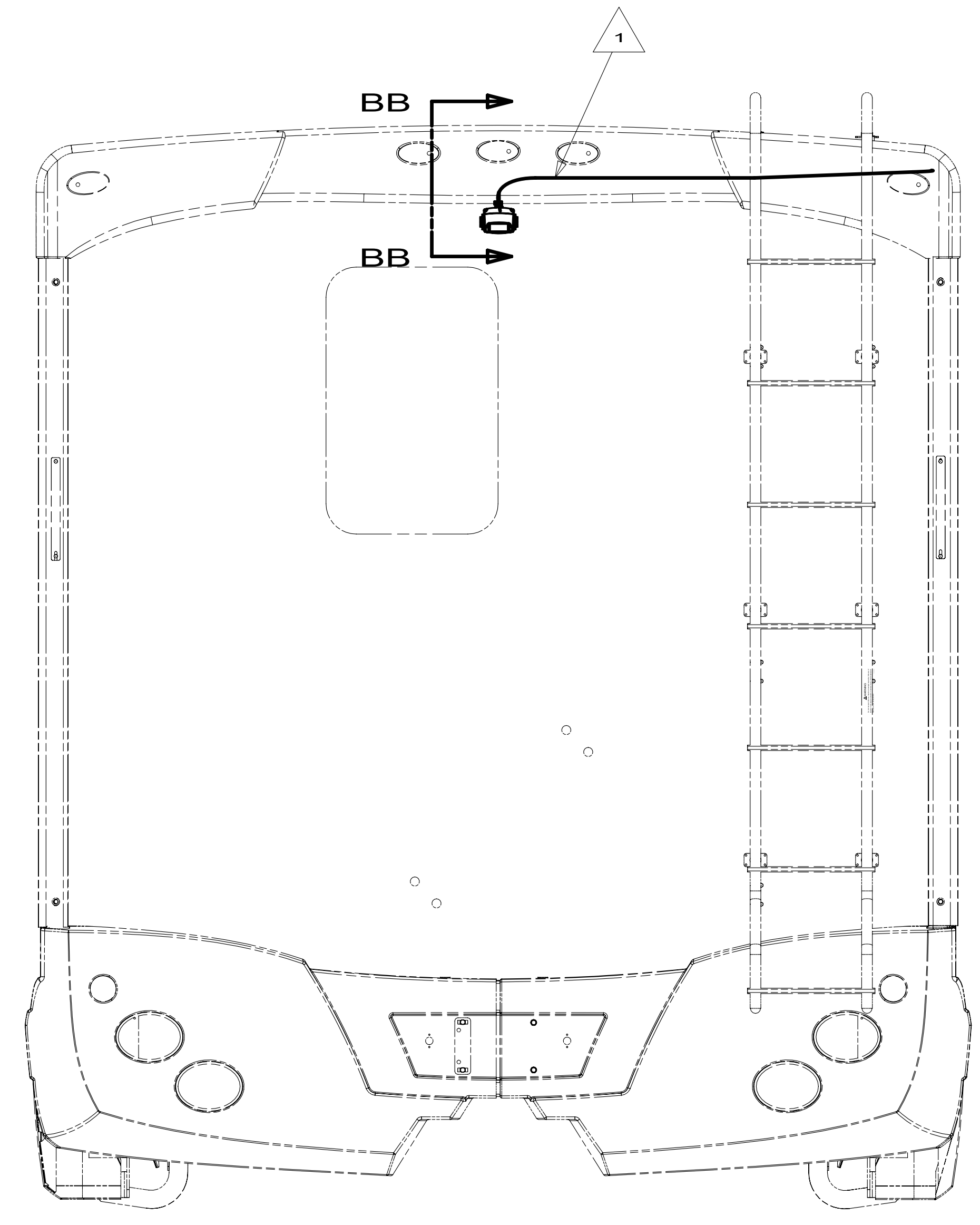
DO NOT SCALE DRAWING

TITLE:	MONITOR INSTL
SHEET 1 OF 4	PART NO 175554

NOTES:
 1 RUN MONITOR CABLE IN ROOF COVE ON LEFT SIDE OF COACH.



SECTION BB-BB



VIEW BA

NOTES:

1 END CABLE IN THIS AREA ON UNITS WITHOUT MONITOR WITH 1H4

- 1H4 REARVIEW MONITOR-WIRE PREP
- 19R RADIO/REARVIEW MONITOR SYS
- 265 CODES/STANDARDS-CSA/CMVSS
- 1B1 CODES/STANDARDS USA

1B1 265 19R

FIRST USED
11 500-SERIES

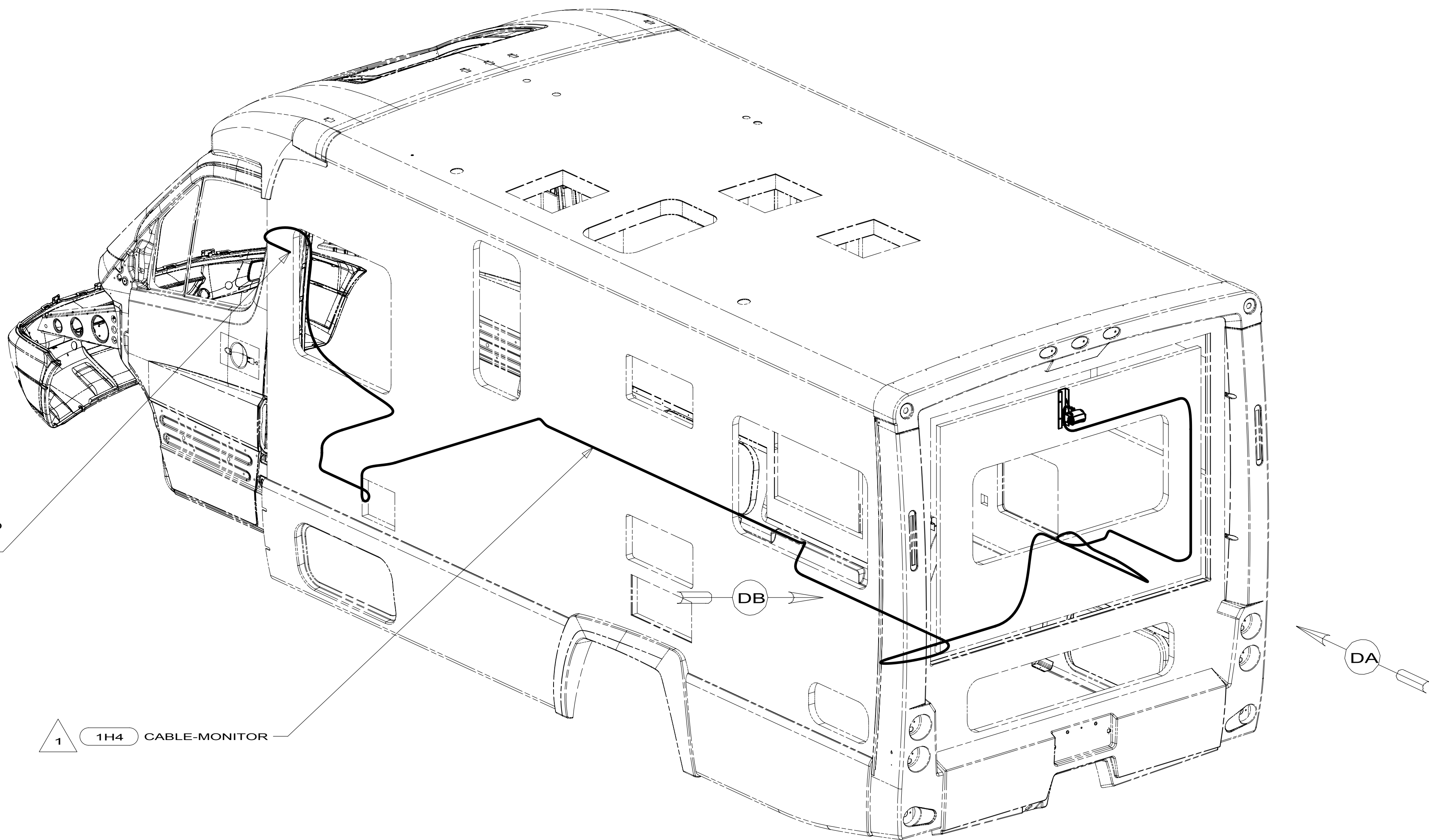
DO NOT SCALE DRAWING

TITLE: **MONITOR INSTL**

SHEET 2 PART NO. **175554** REV

FOR ELECTRICAL TORQUE SPECIFICATIONS SEE DWG NO. 128783-01-000

FOR ELECTRICAL CALLOUTS SEE DWG NO. 121339-01-000



CONNECT TO CAMERA 1 ON RADIO

1 1H4 CABLE-MONITOR

DB

DA

- 1H4 REARVIEW MONITOR-WIRE PREP
- 19R RADIO/REARVIEW MONITOR SYS
- 265 CODES/STANDARDS-CSA/CMVSS
- 1B1 CODES/STANDARDS USA

1B1 265 19R

FIRST USED
11 500-SERIES

DO NOT SCALE DRAWING

TITLE:
MONITOR INSTL

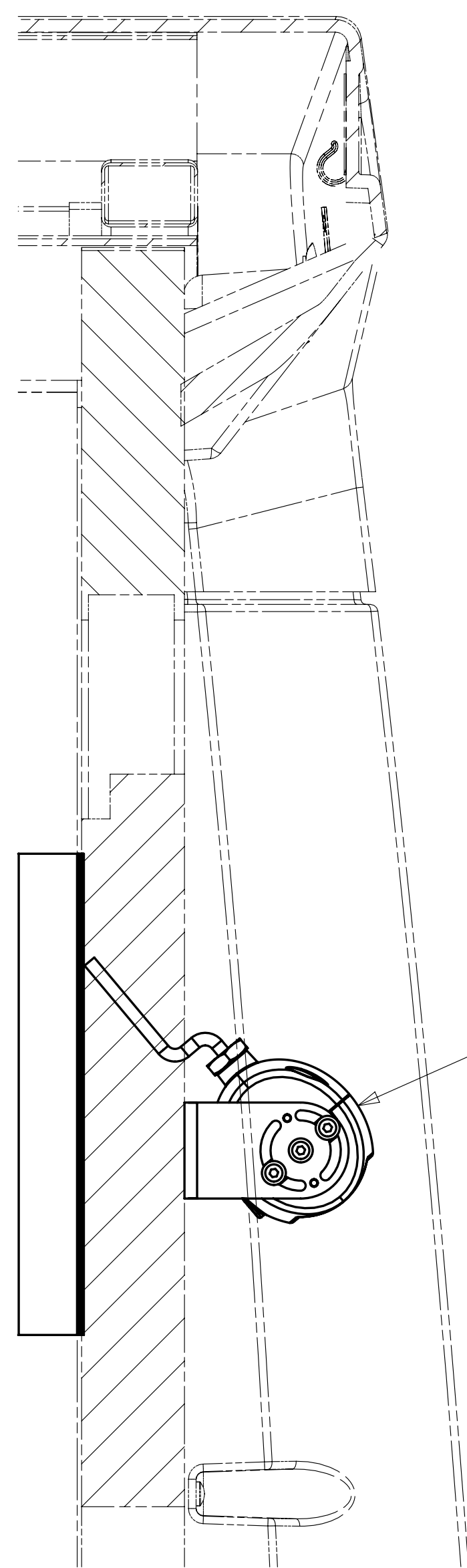
SHEET 3 PART NO **175554** REV

FOR ELECTRICAL TORQUE SPECIFICATIONS SEE DWG NO. 128783-01-000

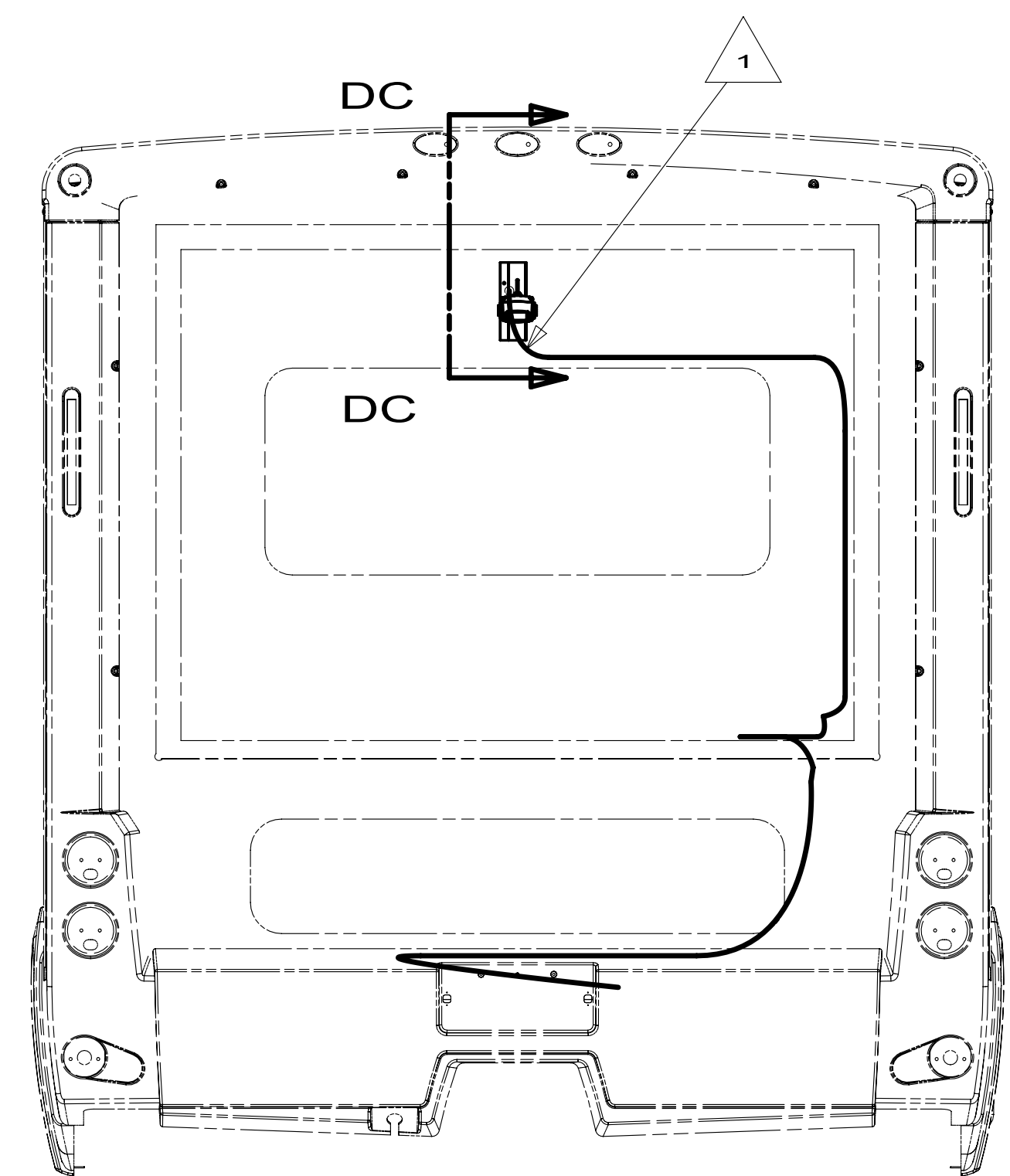
FOR ELECTRICAL CALLOUTS SEE DWG NO. 121339-01-000

1 REAR MONITOR CABLE IS PART OF WIRE ASM-CHASSIS.

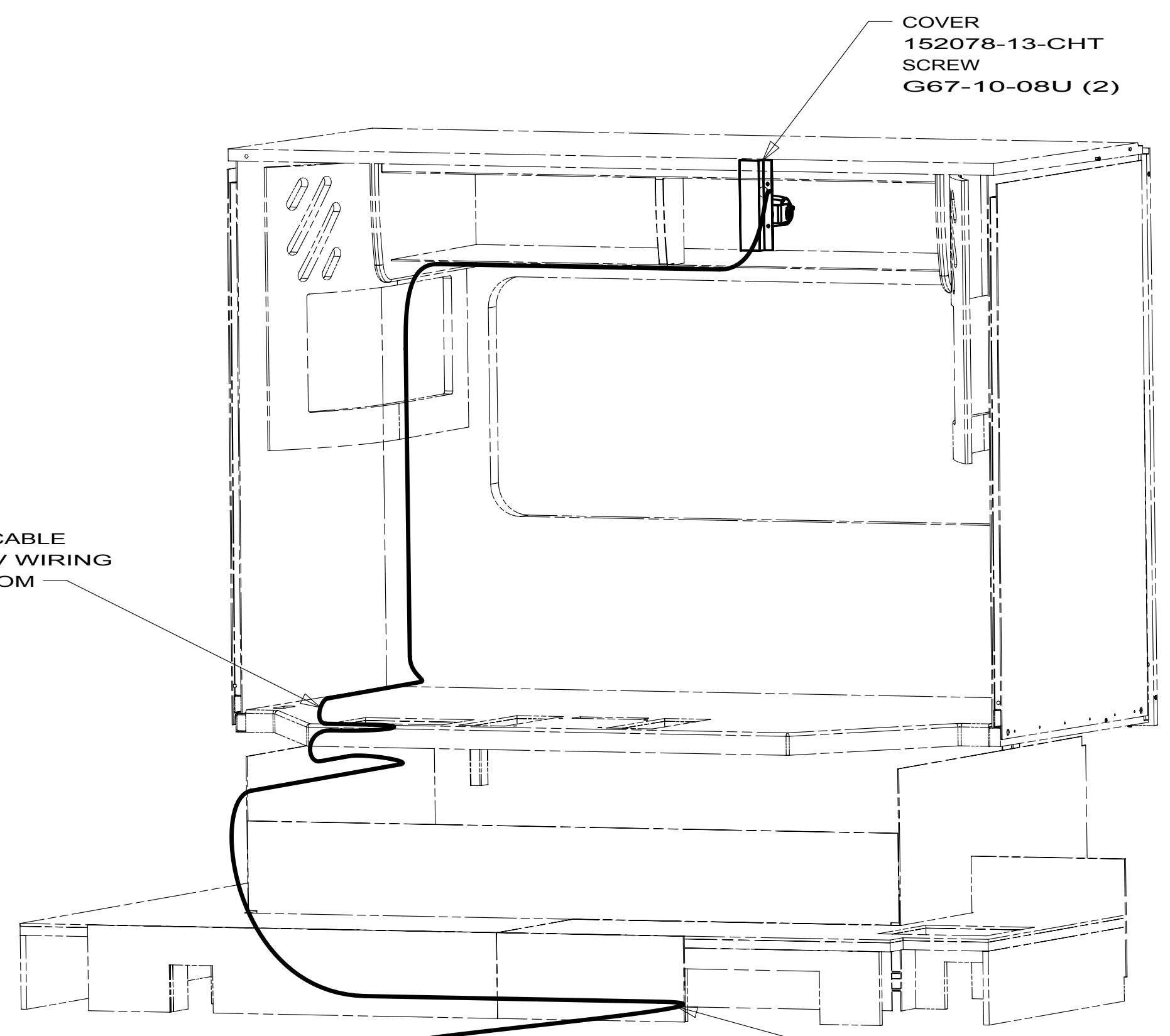
NOTES:



SECTION DC-DC



VIEW DA



VIEW DB

NOTES:
1 END CABLE IN THIS AREA ON UNITS WITHOUT MONITOR WITH 1H4

- 1H4 REARVIEW MONITOR-WIRE PREP
- 19R RADIO/REARVIEW MONITOR SYS
- 265 CODES/STANDARDS-CSA/CMVSS
- 1B1 CODES/STANDARDS USA

1B1 265 19R

FIRST USED
11 500-SERIES

DO NOT SCALE DRAWING

TITLE: **MONITOR INSTL**

SHEET 4 PART NO. **175554** REV

FOR ELECTRICAL TORQUE SPECIFICATIONS SEE DWG NO. 128783-01-000

FOR ELECTRICAL CALLOUTS SEE DWG NO. 121339-01-000