



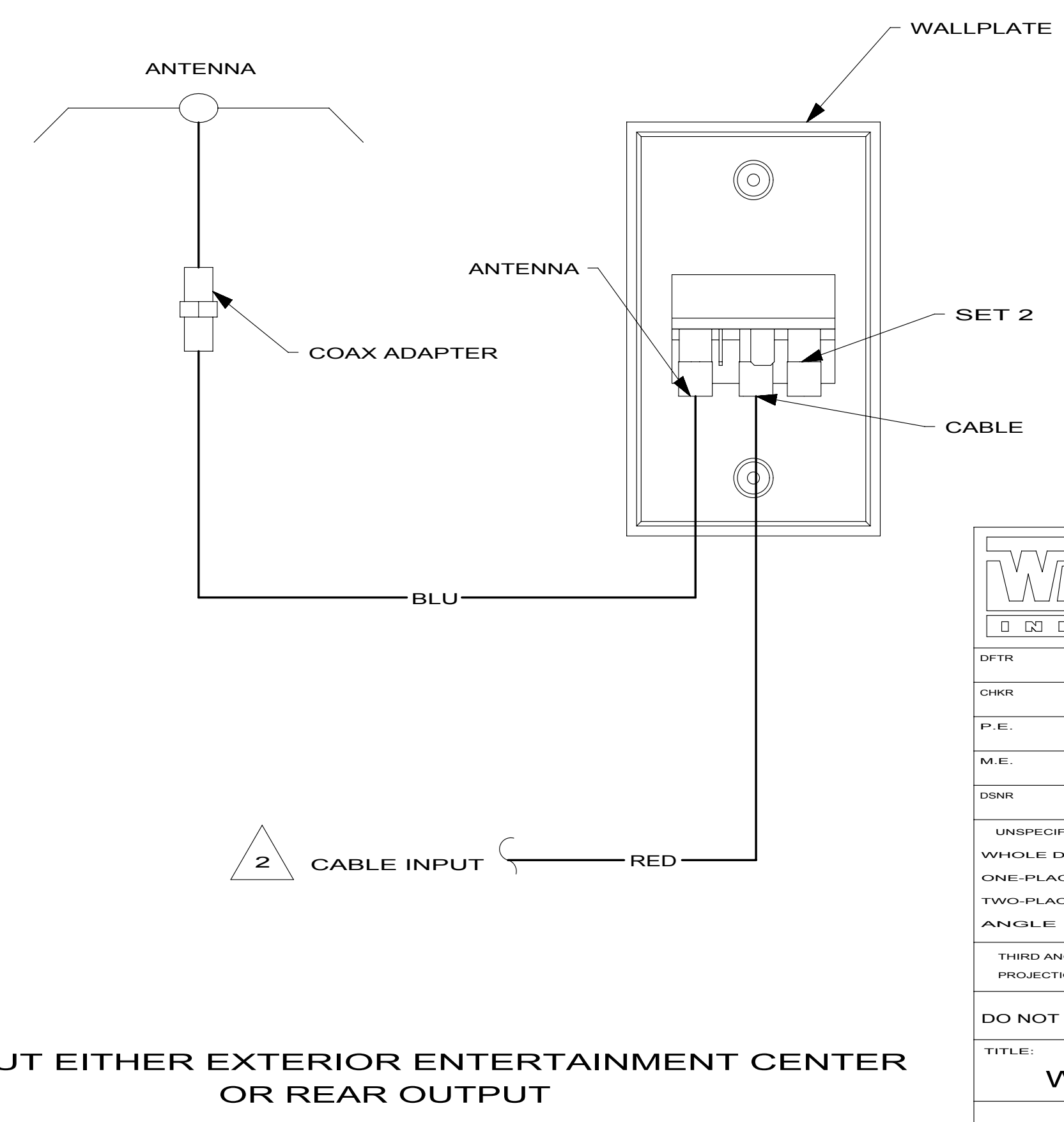
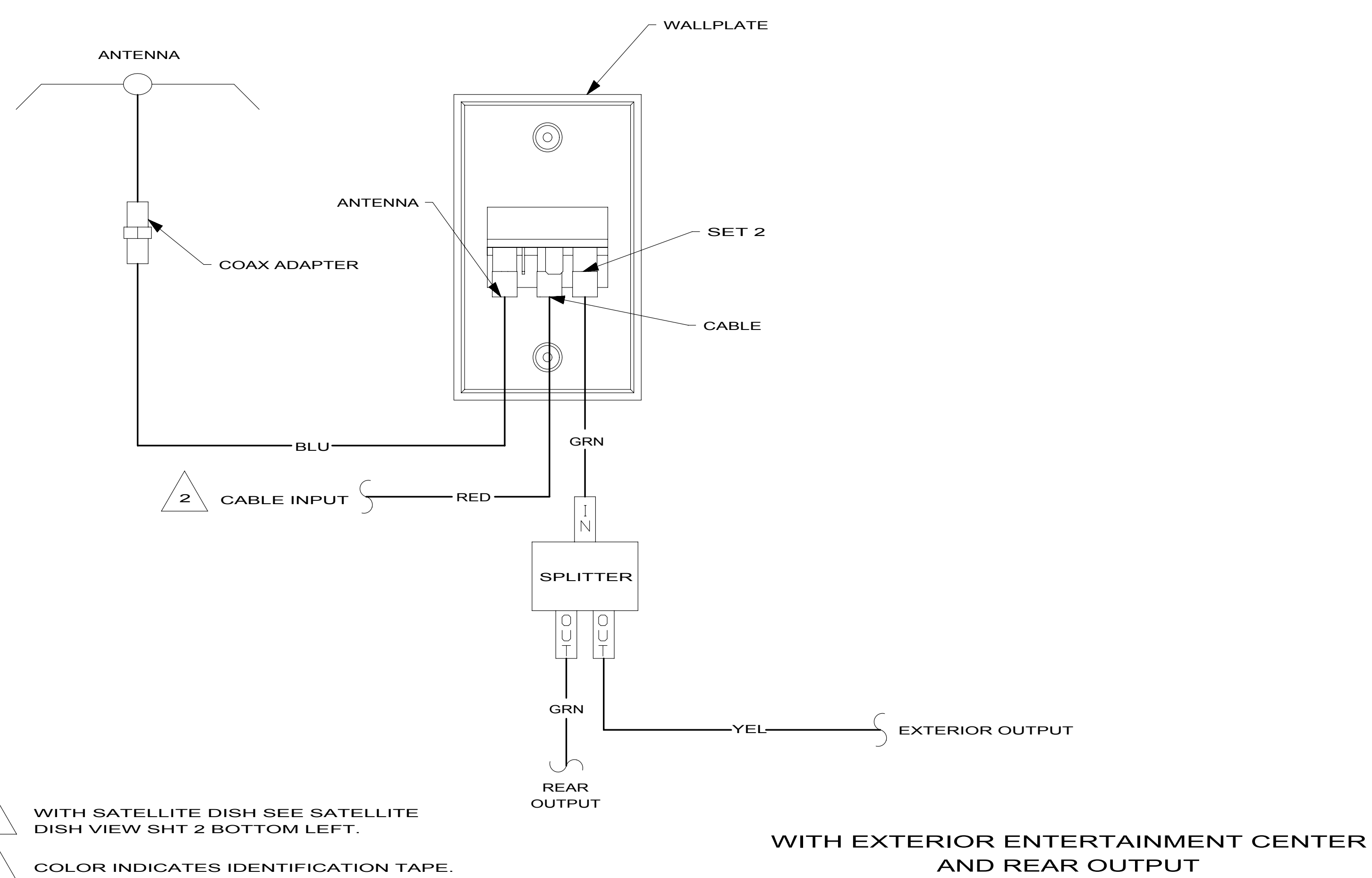
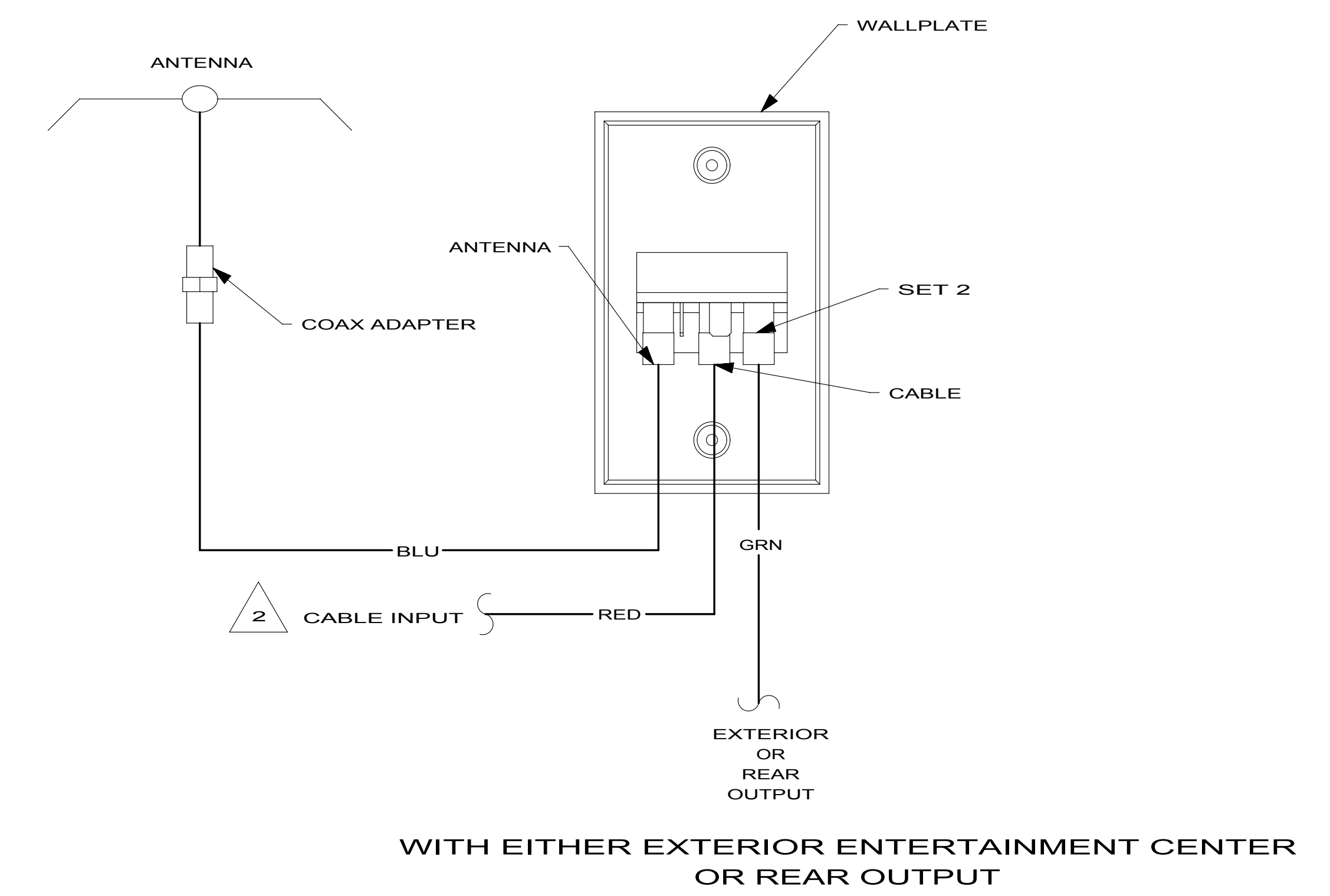
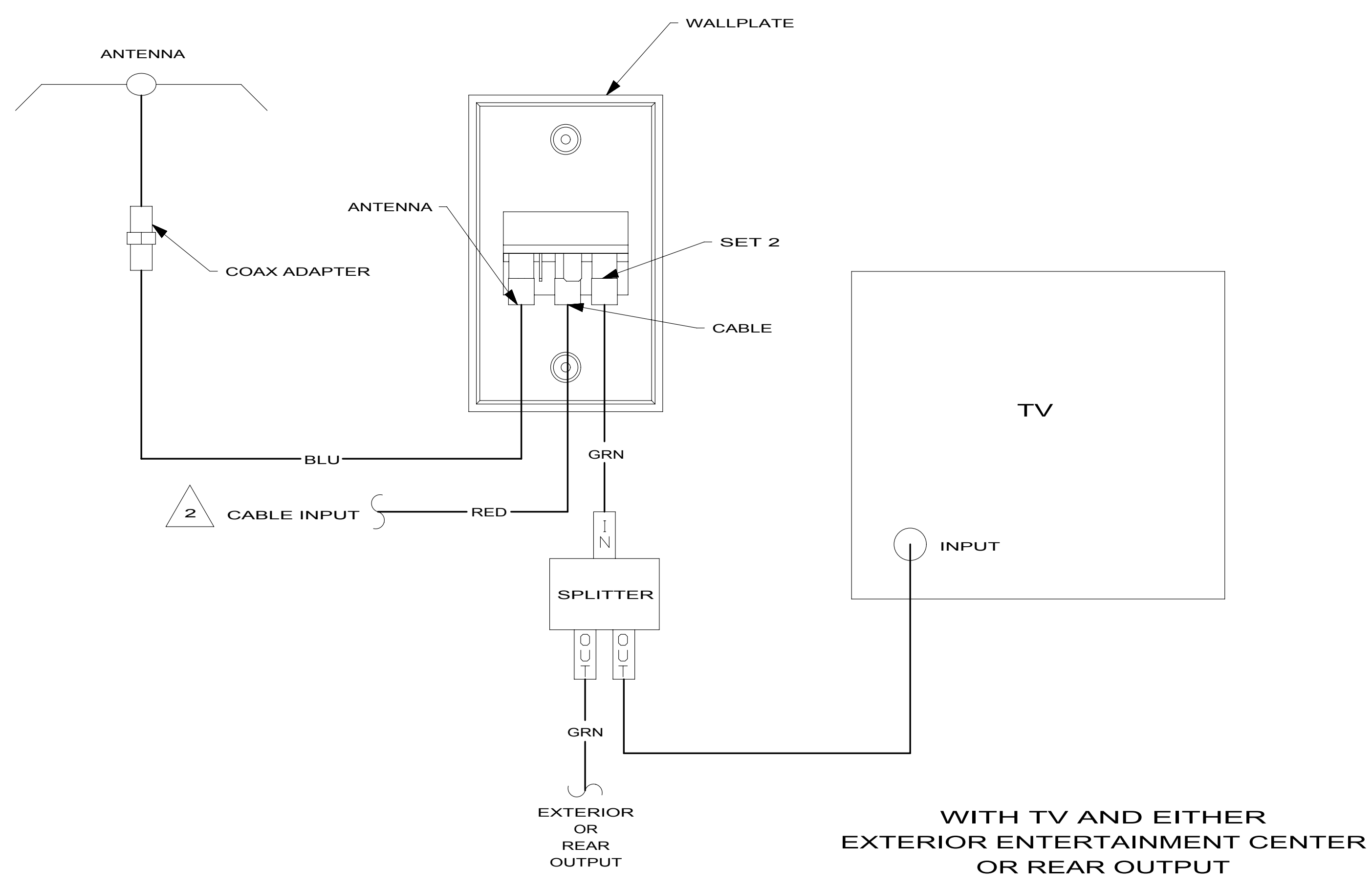
DANGER

Danger of electrical shock, burns or death. Always remove all power sources before attempting any repair, service or diagnostic work. Power can be present from shore power, generator, inverter or battery. All power sources must be disabled and secured before performing any service.



CAUTION

If you lack the skills, tools or equipment to perform diagnostic or repair work leave such work to an authorized Winnebago Industries dealer or other qualified shop.

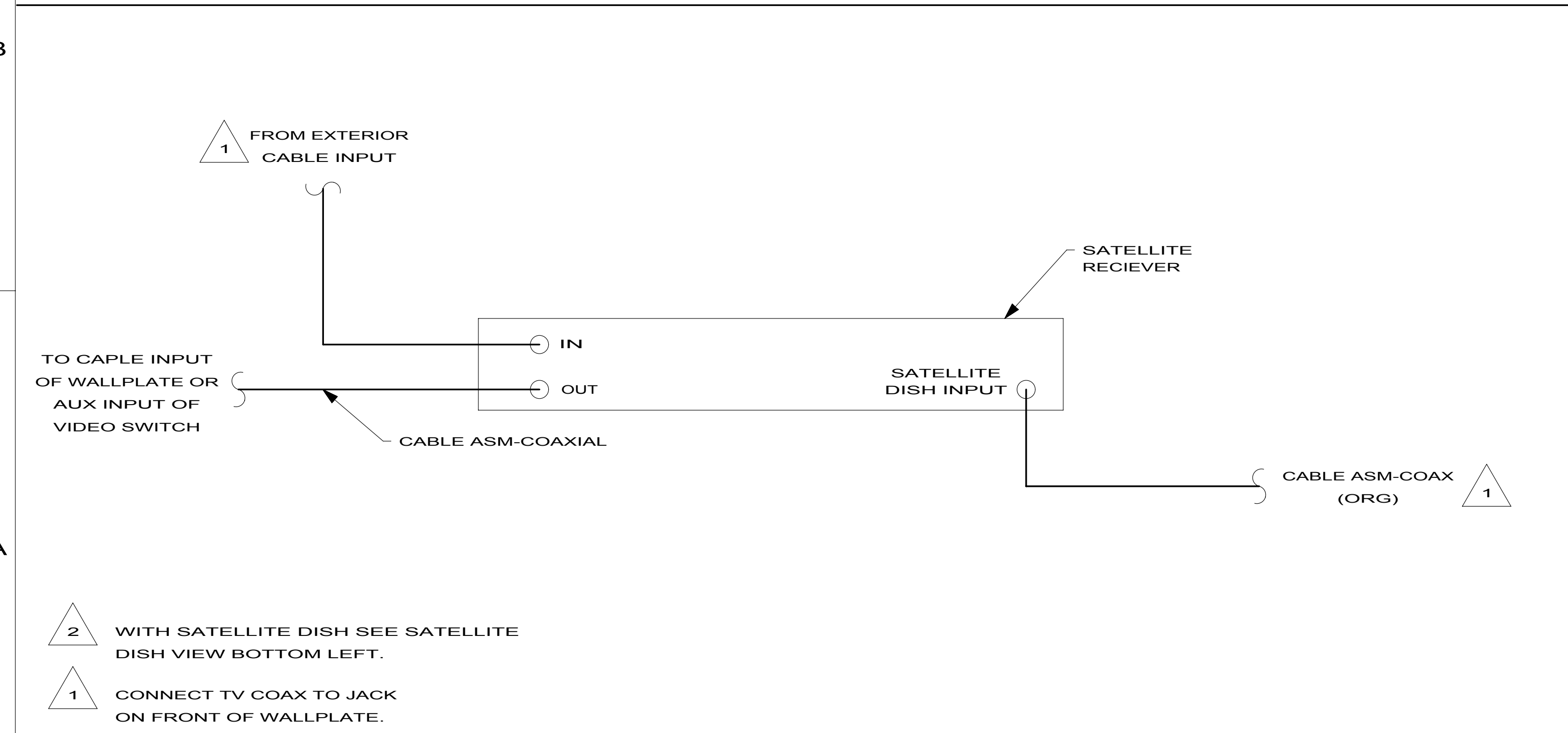
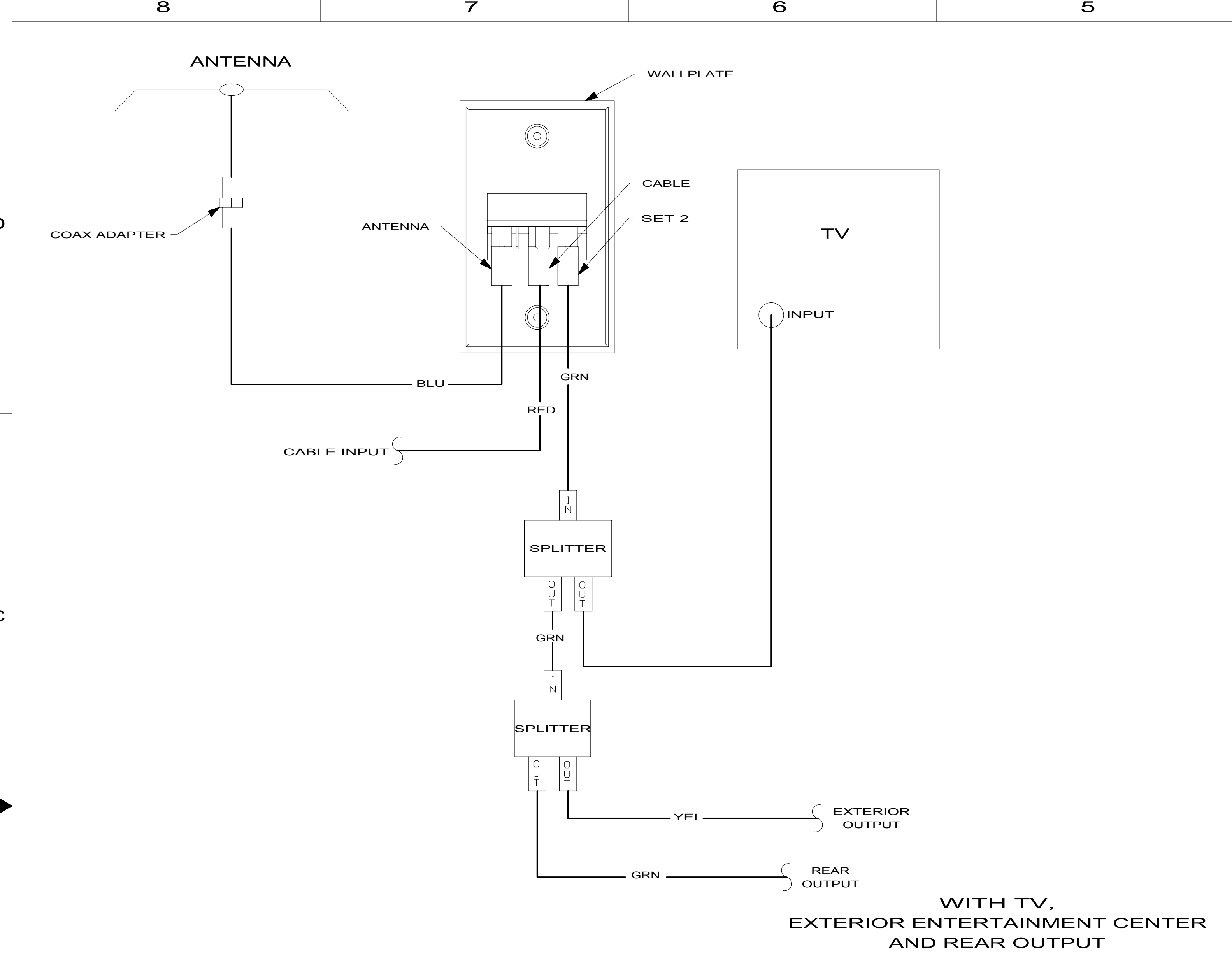


2 WITH SATELLITE DISH SEE SATELLITE DISH VIEW SHT 2 BOTTOM LEFT.

1 COLOR INDICATES IDENTIFICATION TAPE.

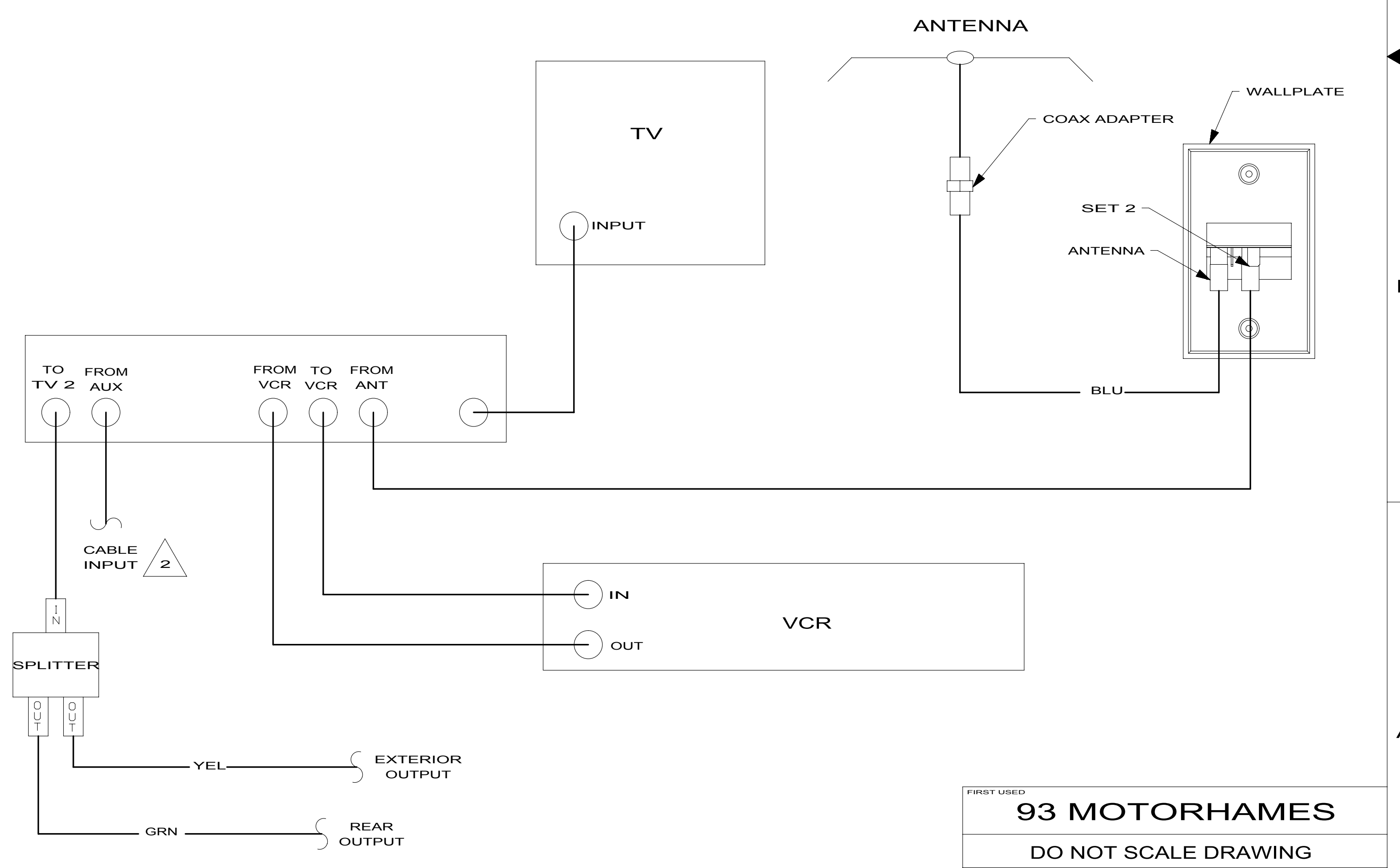
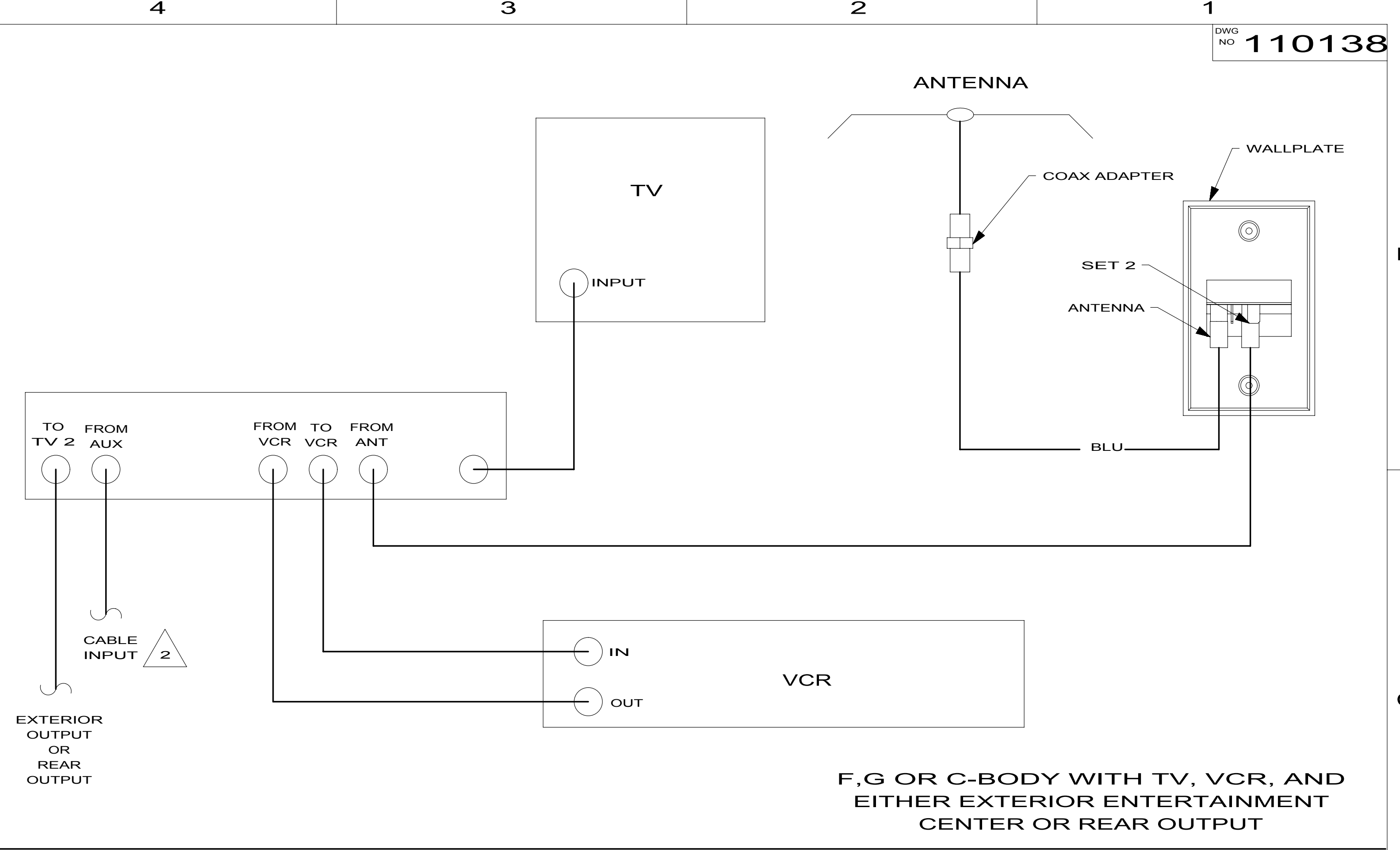
NOTES:

WINNEBAGO		COPYRIGHT 2011 WINNEBAGO INDUSTRIES, INC.	
DTR	ORIG. DATE	ALL DIMENSIONS ARE IN MILLIMETERS	
CHKR		FIRST USED	
P.E.		93 MOTORHAMES	
M.E.		UNSPECIFIED TOLERANCES ARE:	
DSNR		MATERIAL:	
WHOLE DIM (X) :		DO NOT SCALE DRAWING	
ONE-PLACE (X.X) :		REFER TO ES0018 FOR FASTENER TIGHTENING GUIDELINES	
TWO-PLACE (X.XX) :		TITLE:	
ANGLE :		WIRING DIAGRAM-TV COAX	
THIRD ANGLE PROJECTION		SHEET 1 OF 2	
PART NO		REV	
110138		110138	
REF:		1	
		1/4/2012	



NOTES:

- 2 WITH SATELLITE DISH SEE SATELLITE DISH VIEW BOTTOM LEFT.
- 1 CONNECT TV COAX TO JACK ON FRONT OF WALLPLATE.



N,M OR P-SERIES WITH TV AND VCR OR F,G OR C-BODY WITH TV, VCR, EXTERIOR ENTERTAINMENT CENTER AND REAR OUTPUT

FIRST USED		93 MOTORHAMES	
DO NOT SCALE DRAWING			
TITLE: WIRING DIAGRAM-TV COAX			
SHEET 2	PART NO	110138	