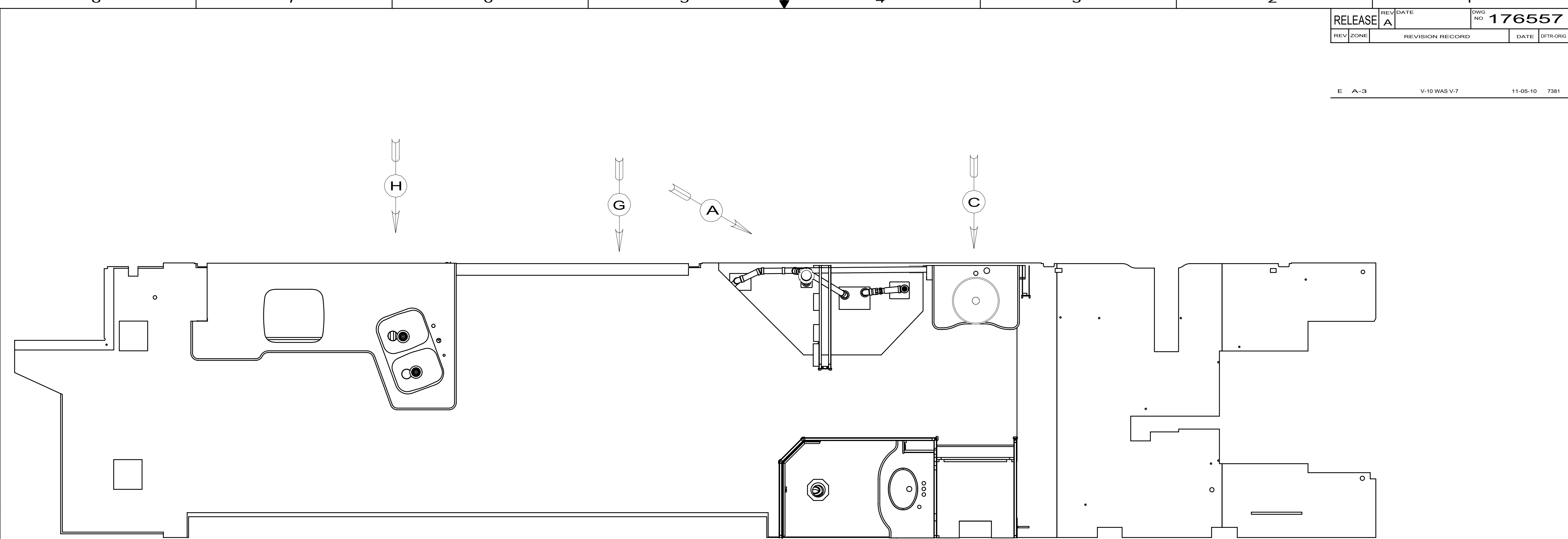


RELEASE	REV DATE	DWG NO	176557
REV ZONE	REVISION RECORD	DATE	DTR-ORIG
E A-3	V-10 WAS V-7	11-05-10	7381

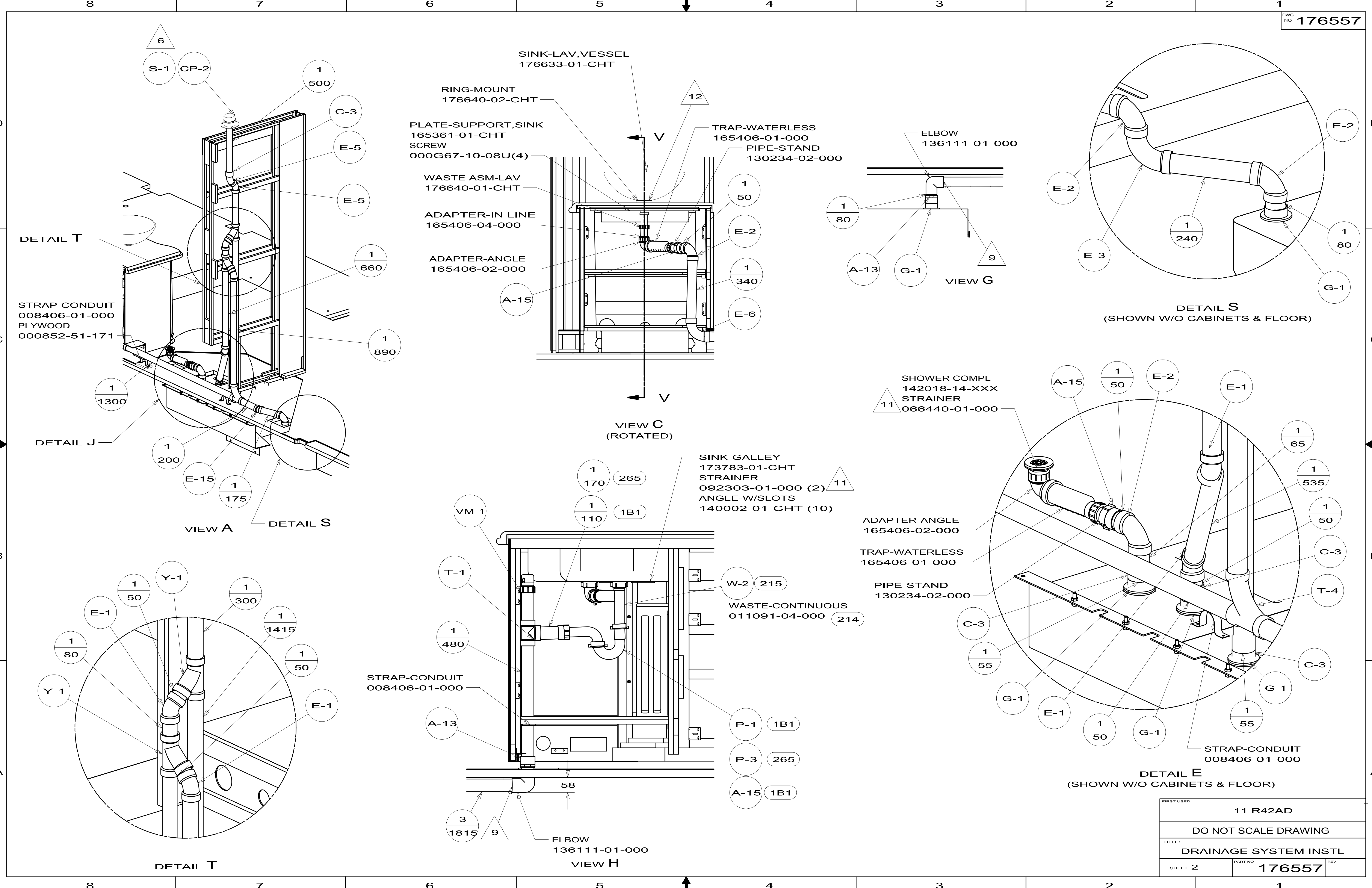


- NOTES:
1. SLOPE OF HORIZONTAL PIPING TO BE MINIMUM OF 3 PER 305 mm.
 2. SLOPE OF TRAP ARM MUST BE 6 PER 305 mm.
 3. ALL PIPE AND FITTINGS TO BE ASSEMBLED WITH SOLVENT 004020-01-000 (USA), 004020-02-000 (CAN)
 4. GLUE FITTING AFTER CABINET IS INSTALLED.
 5. SEAL AROUND SHOWER WITH SILICONE.
 6. VENT PIPE MUST PROJECT 51 MIN AND 64 MAX ABOVE ROOF FOR PROPER FIT AND FUNCTION.
 7. SECURE VENT PIPE TO FLOOR WITH CLAMP 062401-02-000 (2), SCREW 000G67-10-12B (2), BRACKET 136878-01-CHT (2).
 8. SECURE DRAINAGE PIPES TO CABINET USING WIRE TIE 108046-02-000, AND SCREW 000G67-10-12B AT INTERVALS OF NOT MORE THAN 4 FEET APART.
 9. APPLY PRIMER 126427-02-000 AND CEMENT 126427-01-000 BETWEEN ELBOW AND FLEX PIPE.
 10. ATTACH TANK BRACKET TO RISER.
 11. USE SMOOTH PLUMBERS PUTTY 167459-01-000 TO SEAL STRAINER (0.2 PER STRAINER).
 12. SCRUE MOUNT RING TO COUNTERTOP W/SILICONE.

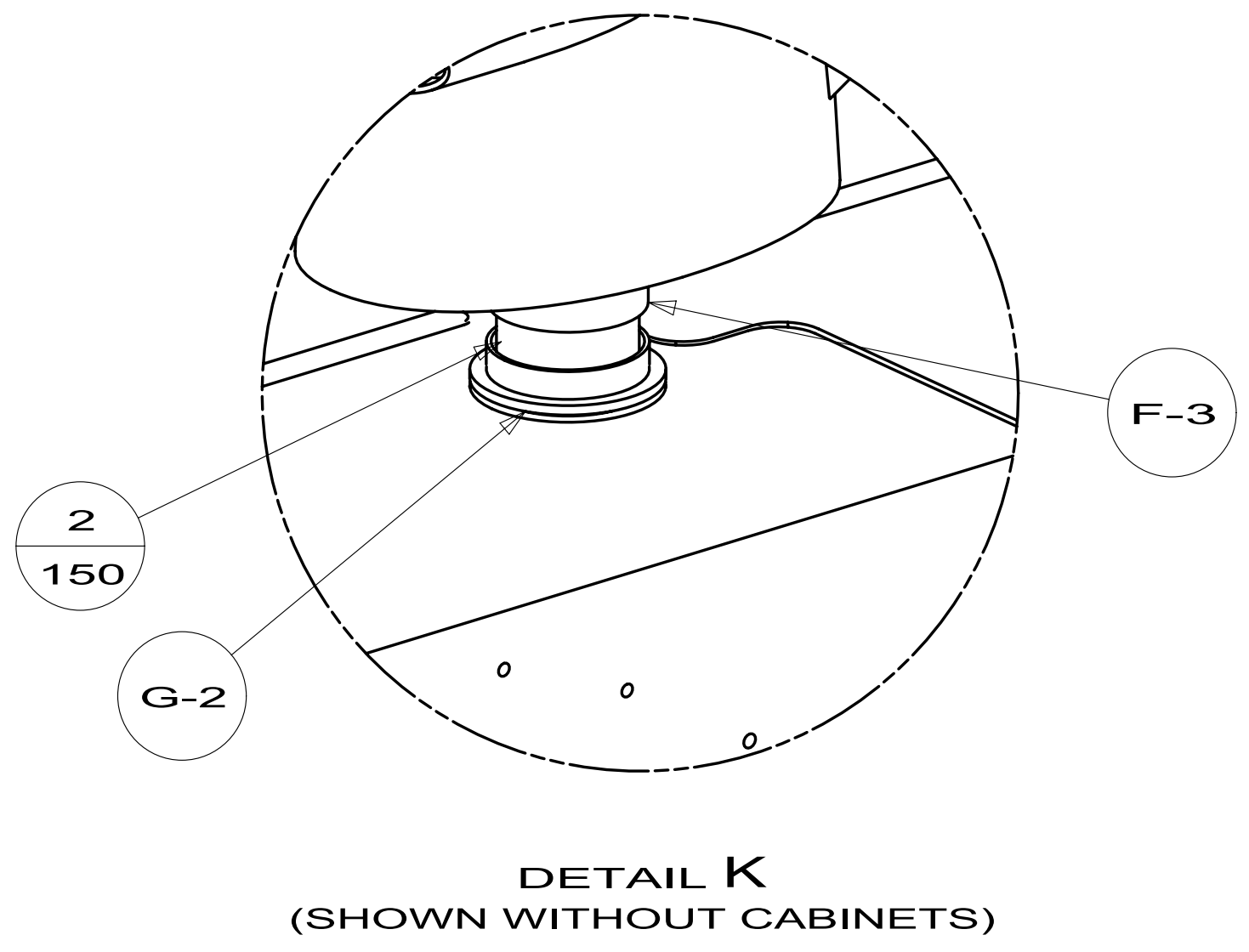
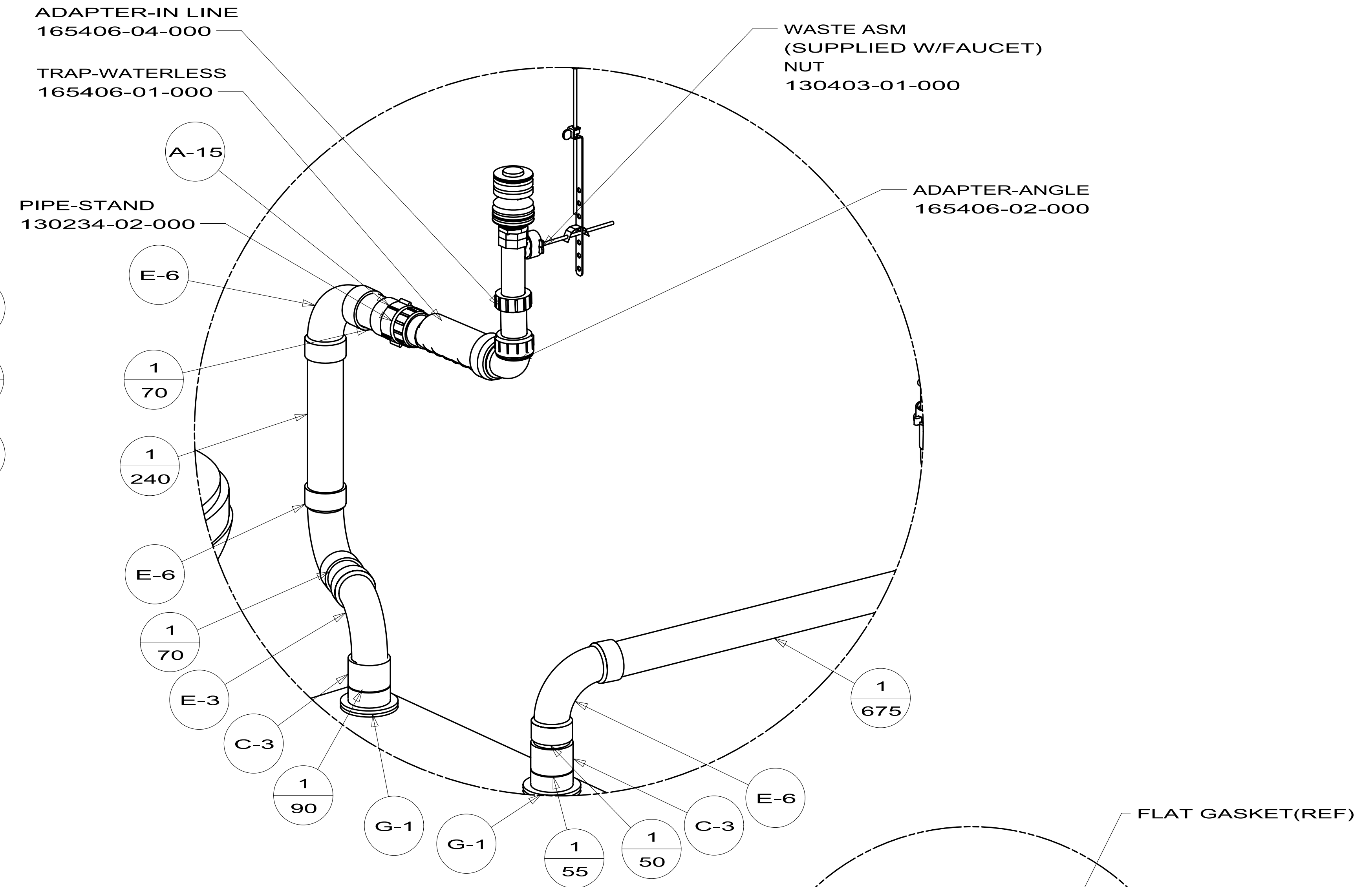
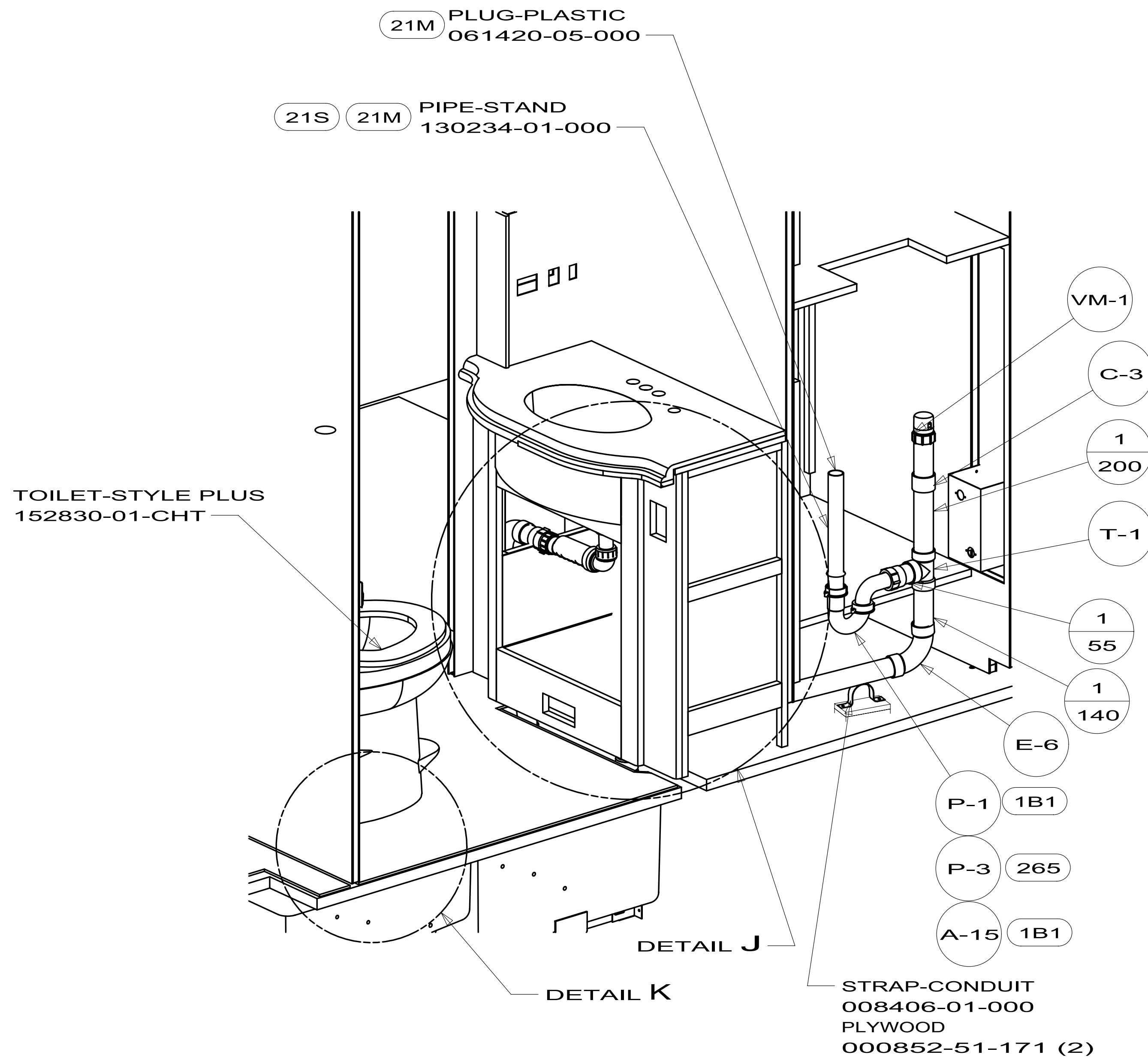
- 22A VACUUM SYS-CENTRAL-WITHOUT
- 22T VACUUM CLEANER-CENTRAL
- 21S WASHER/DRYER STACKED
- 1B1 CODES/STANDARDS USA
- 265 CODES/STDS-CSA,CMVSS
- 21M WASHER/DRYER PREP
- 214 DISHWASHER DRAWER STYLE
- 215 DISHWASHER WITHOUT

		COPYRIGHT 2011 WINNEBAGO INDUSTRIES, INC.
DTR	ORIG. DATE	
CHKR	ALL DIMENSIONS ARE IN MILLIMETERS	
P.E.		
M.E.	FIRST USED	
DSNR	11 R42AD	
UNSPECIFIED TOLERANCES ARE:		MATERIAL:
WHOLE DIM (X)	: 3	
ONE-PLACE (X.X)	: 1.5	
TWO-PLACE (X.XX)	: 0.50	
ANGLE	: 1°	
THIRD ANGLE PROJECTION		
DO NOT SCALE DRAWING		REFER TO ES0018 FOR FASTENER TIGHTENING GUIDELINES
TITLE: DRAINAGE SYSTEM INSTL		
SHEET 1 OF 4	PART NO 176557	REV
REF:	1	

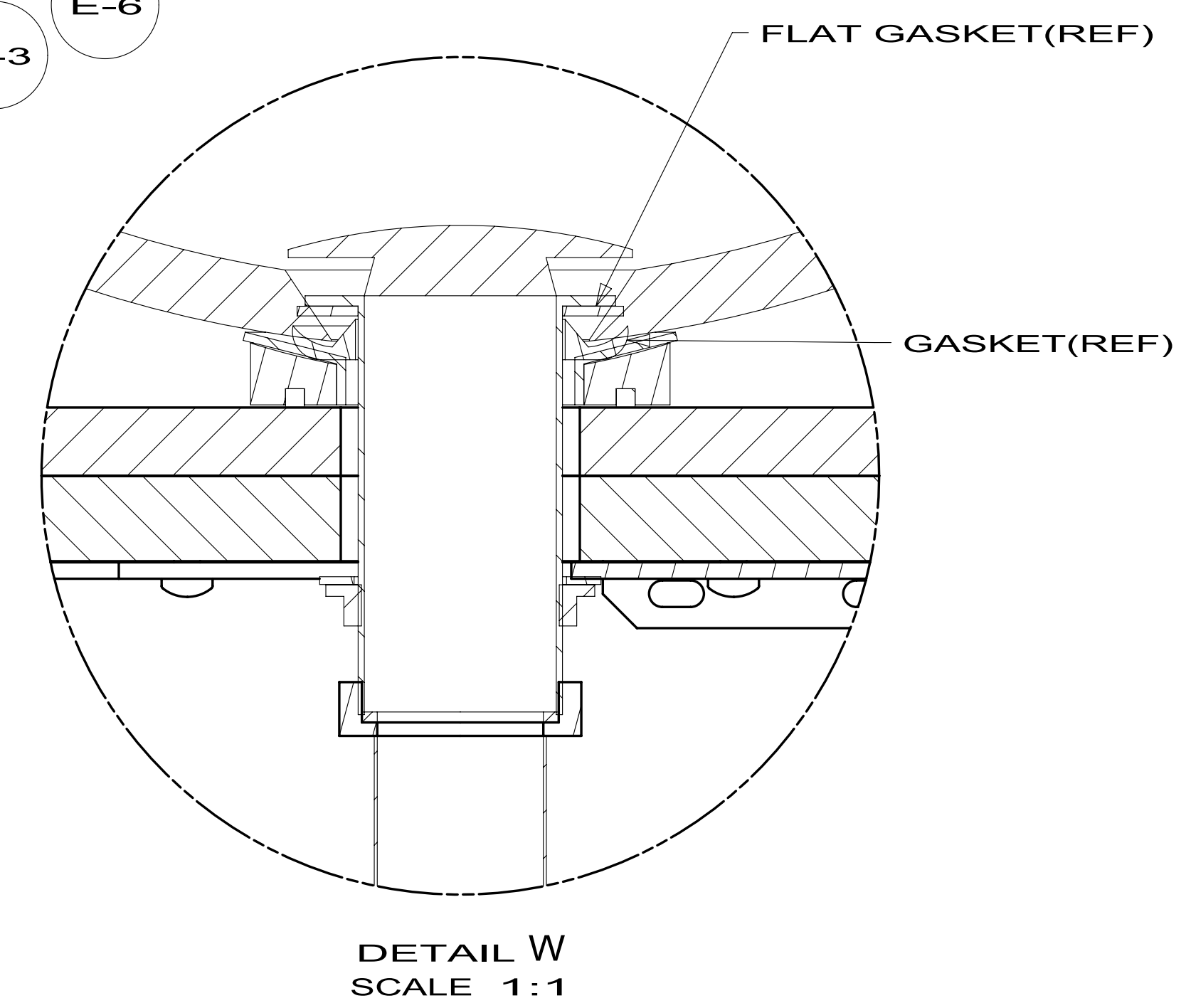
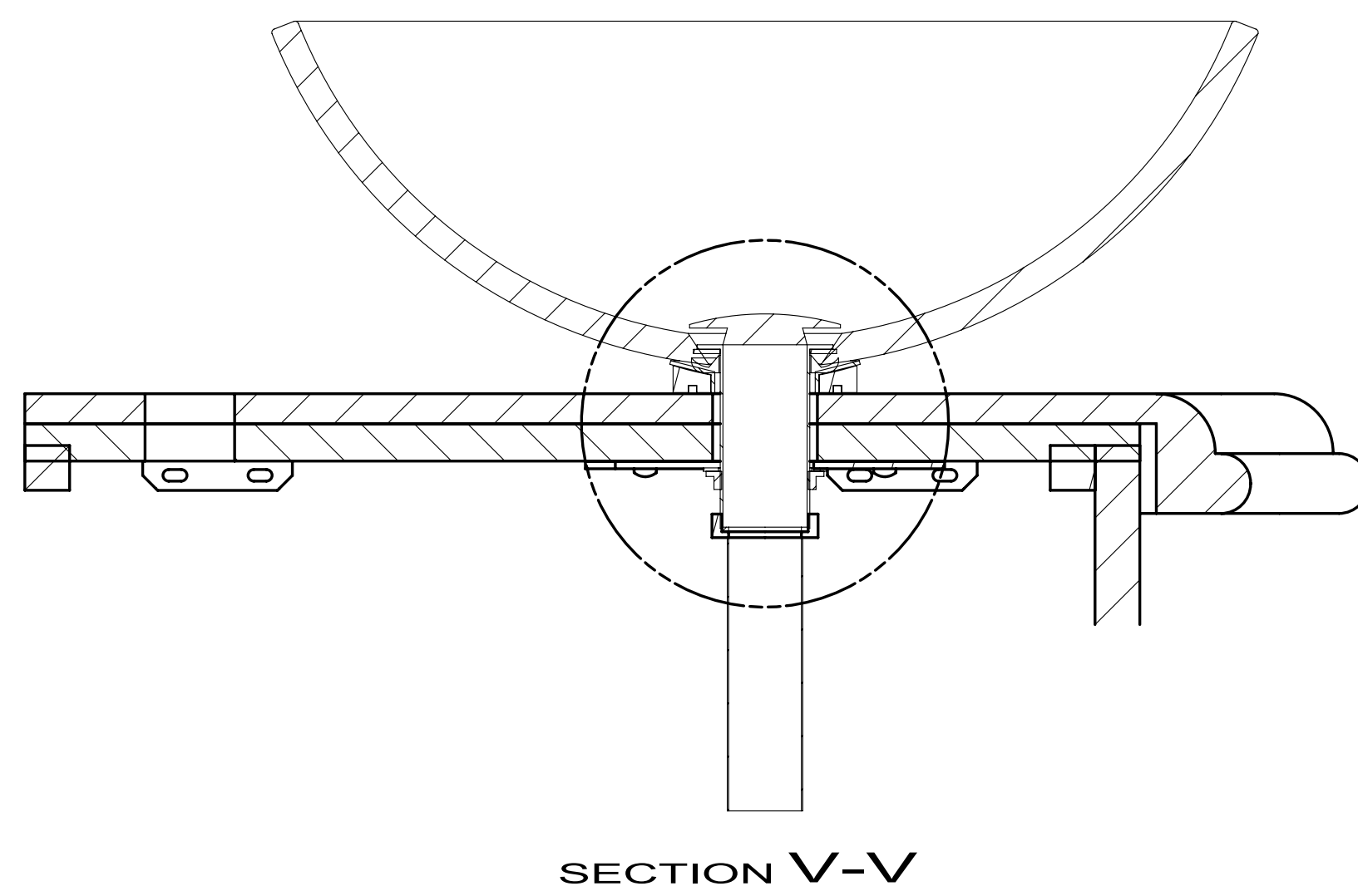
FOR DRAINAGE CALLOUTS SEE DWG NO 116229-01-000



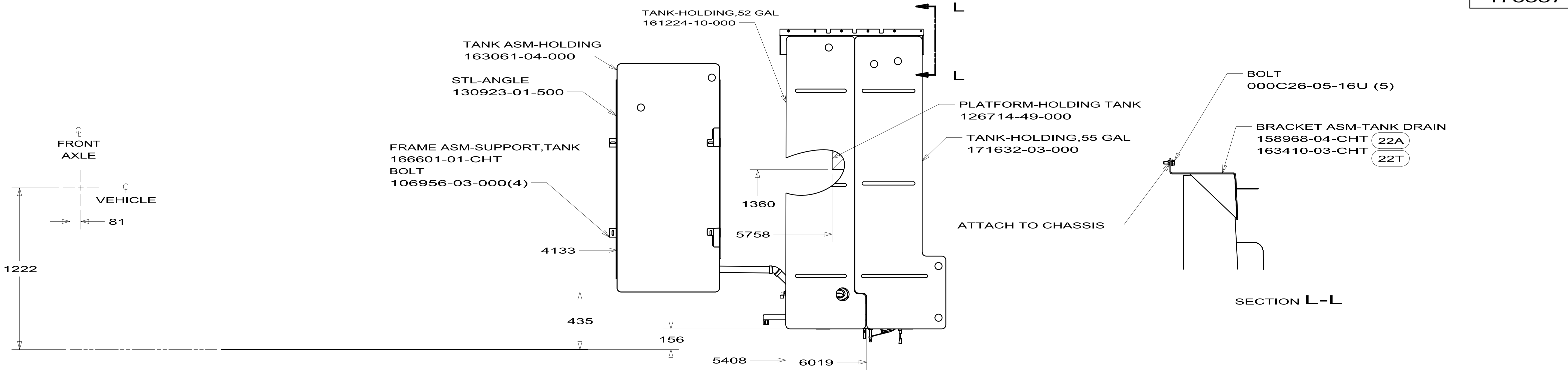
FIRST USED	11 R42AD	
TITLE:	DO NOT SCALE DRAWING	
	DRAINAGE SYSTEM INSTL	
SHEET 2	PART NO	176557
	REV	



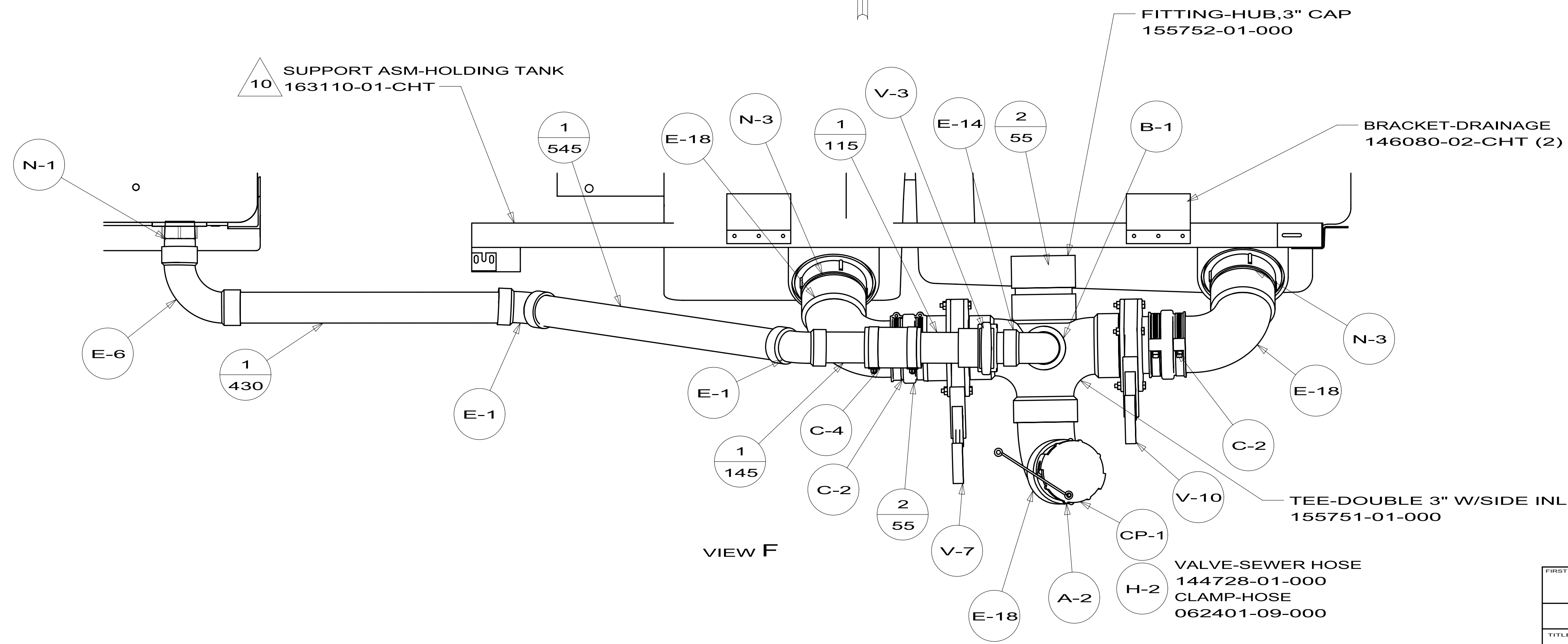
VIEW B



FIRST USED	11 R42AD	
TITLE:	DO NOT SCALE DRAWING	
TITLE:	DRAINAGE SYSTEM INSTL	
SHEET 3	PART NO	176557
	REV	

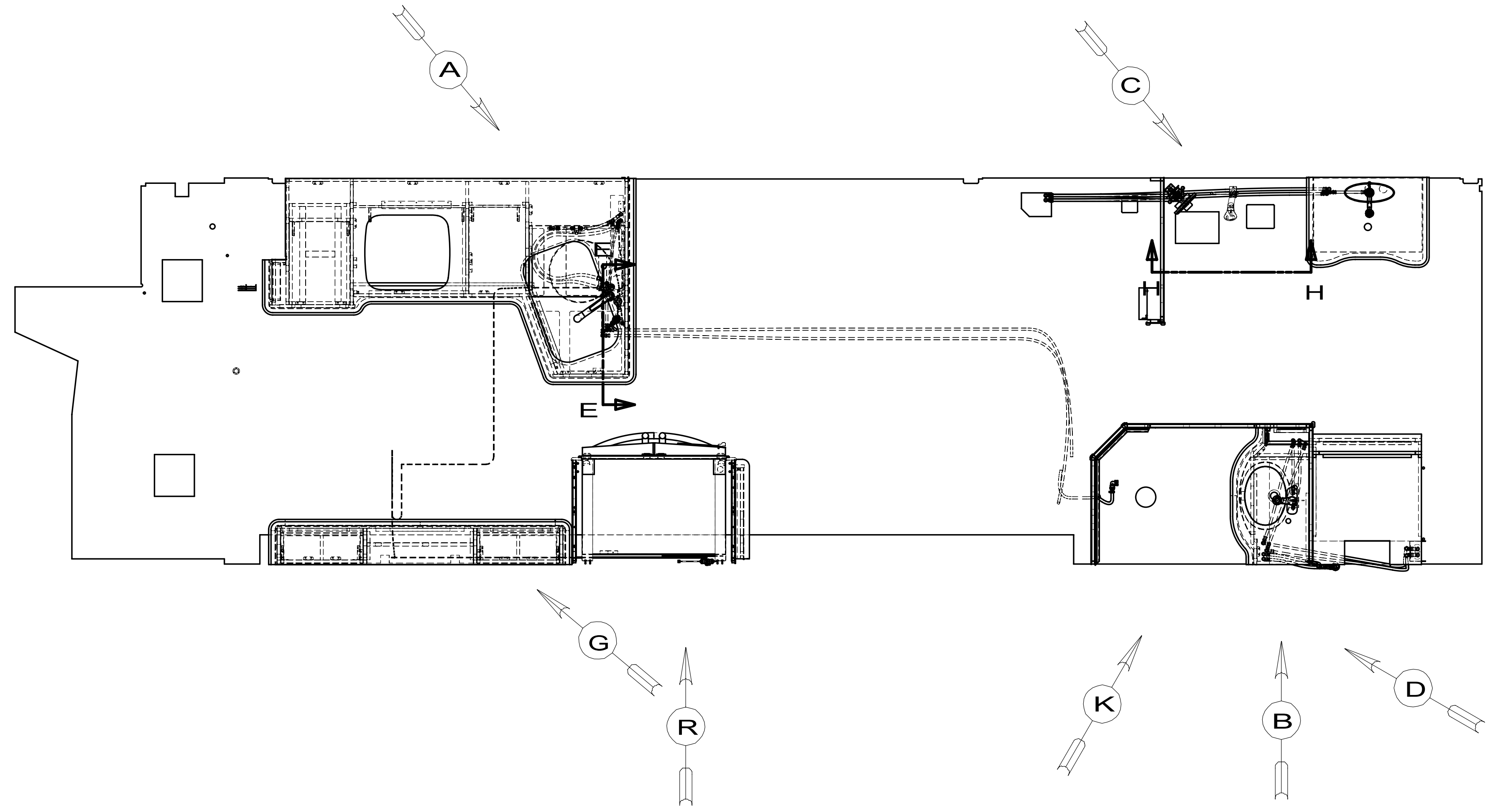


VIEW D
(SHOWN W/O CABINETS/FLOOR)



VIEW F

FIRST USED	11 R42AD	
DO NOT SCALE DRAWING		
TITLE: DRAINAGE SYSTEM INSTL		
SHEET 4	PART NO 176557	REV

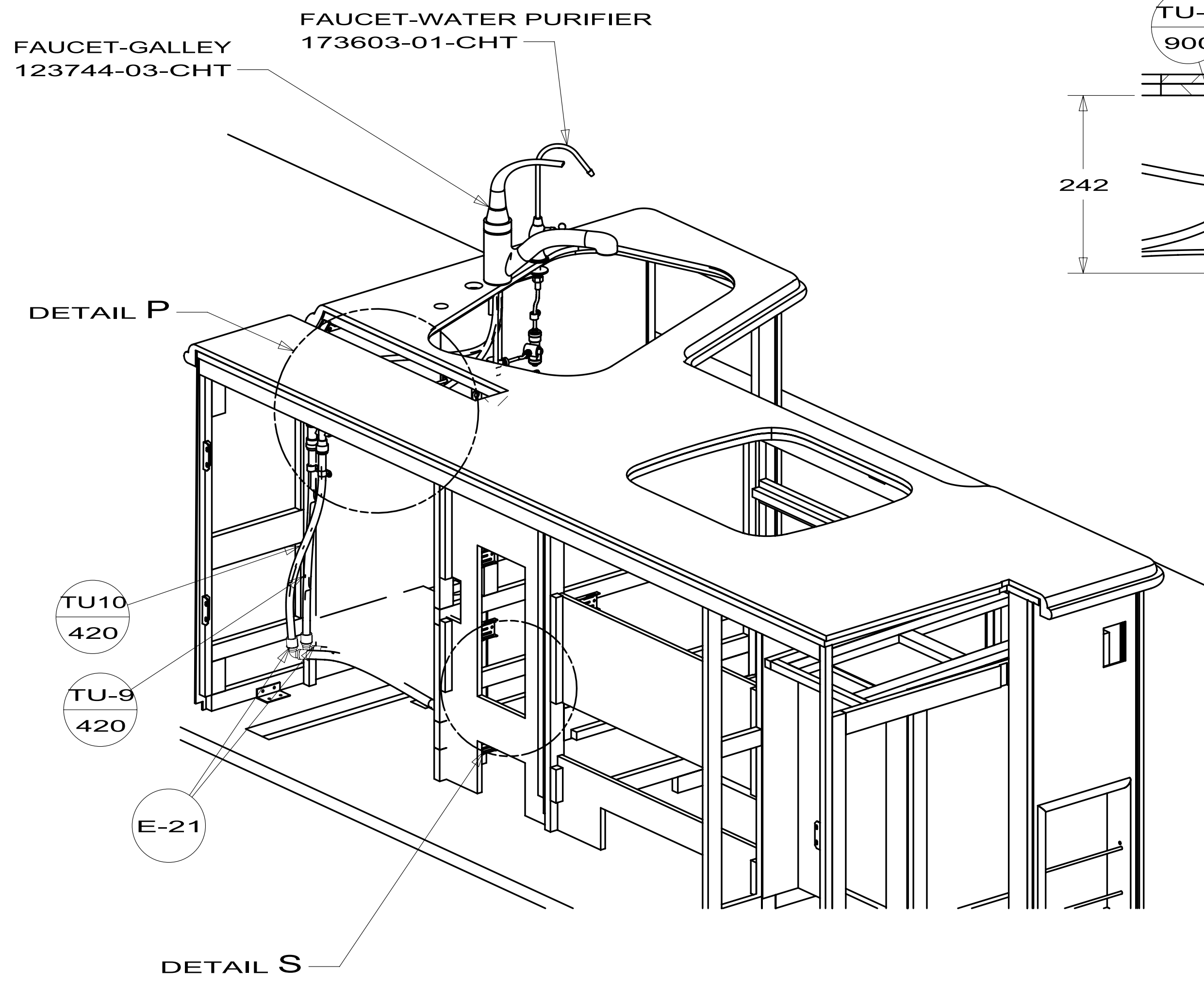


- (79W) REFRIGERATOR-4 DOOR
- (15L) REFR/FRZR 2DOOR RESIDENTIAL
- (21S) WASHER & DRYER-PAIR
- (21M) WASHER/DRYER PREP
- (214) DISHWASHER-DRAWER STYLE
- (215) DISHWASHER WITHOUT
- (505) HOSE REEL-WATER,POWERED

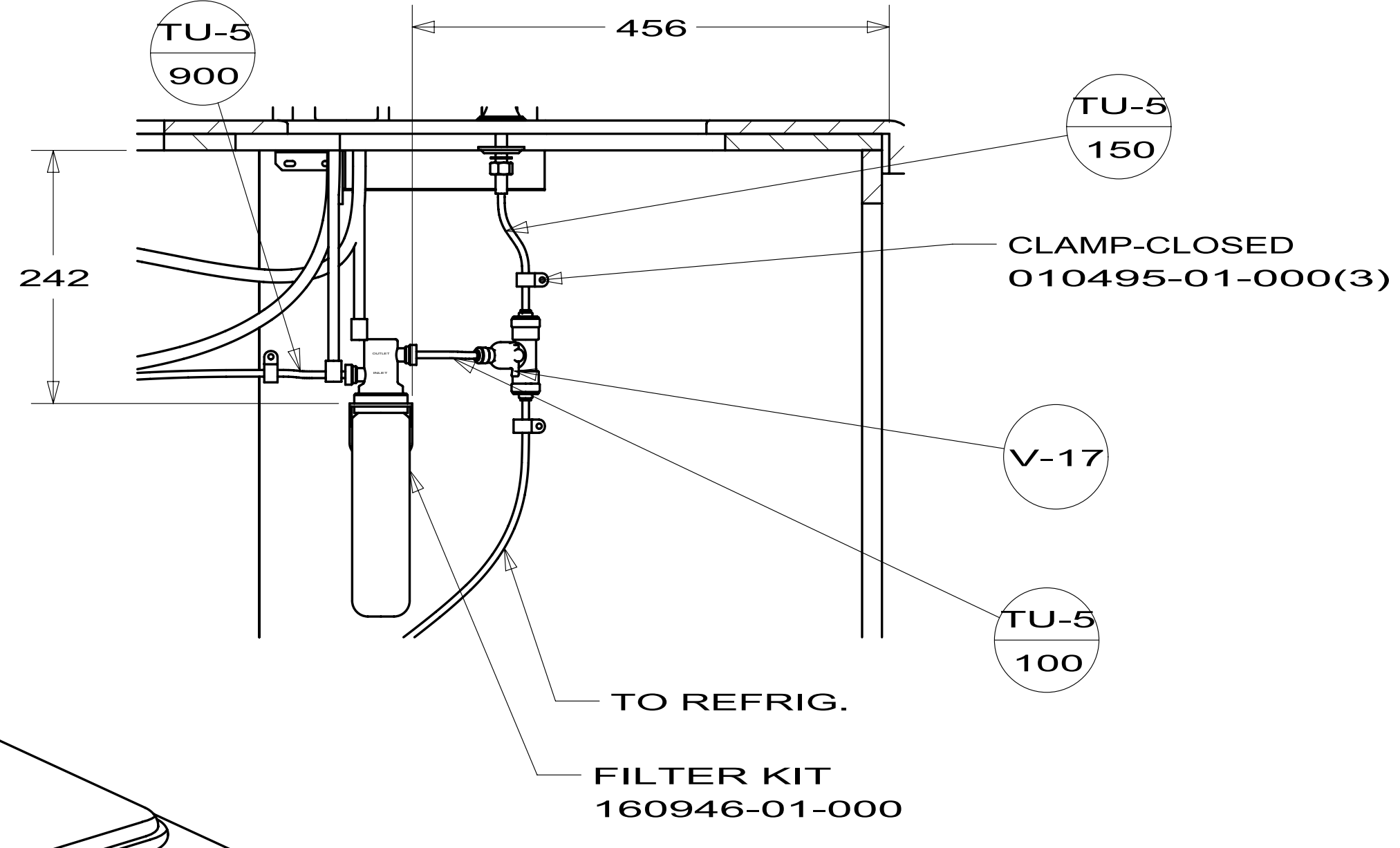
- NOTES:
- 9 VALVE MUST REMAIN OPEN AFTER WATER TEST.
 - 8 FOLLOW AQUAHOT TEST-PROCEDURE REQUIRES 5 GALLONS OF 157665-02-000 ANTIFREEZE FOR WINTERIZATION.
 - 7 ADD PIPE WRAP (LADDER SCRAP 110157-02-000) INSULATION.
 - 6 ADD TEFLON TAPE 010405-03-000.
 - 5 ADD TEFLON TAPE 010405-02-000.
 - 4 ADD TEFLON TAPE 010405-01-000.
 3. ALL TUBING TO BE SECURED AT 1200 INTERVALS MAXIMUM WITH CLAMP 010495-01-000 AND SCREW 000G67-10-12B OR EQUIVALENT.
 2. TUBING TO BE INSTALLED WITH SUFFICIENT SLOPE TO PROVIDE DRAINAGE TO NEAREST VALVE.
 1. PLASTIC FITTINGS TO BE SEALED WITH SEALANT 084456-01-000.

FOR
WATER
CALLOUTS
SEE DWG NO
116230-01-000

		COPYRIGHT 2011 WINNEBAGO INDUSTRIES, INC.
DTR	ORIG. DATE	
CHKR	ALL DIMENSIONS ARE IN MILLIMETERS	
P.E.		
M.E.	FIRST USED	
DSNR	12 R42AD	
UNSPECIFIED TOLERANCES ARE: WHOLE DIM (X) : 3 ONE-PLACE (X.X) : 1.5 TWO-PLACE (X.XX) : 0.50 ANGLE : 1°		MATERIAL:
THIRD ANGLE PROJECTION		
DO NOT SCALE DRAWING	REFER TO ES0018 FOR FASTENER TIGHTENING GUIDELINES	
TITLE: WATER SYSTEM INSTL		
SHEET 1 OF 5	PART NO 179087	REV
REF:	1	

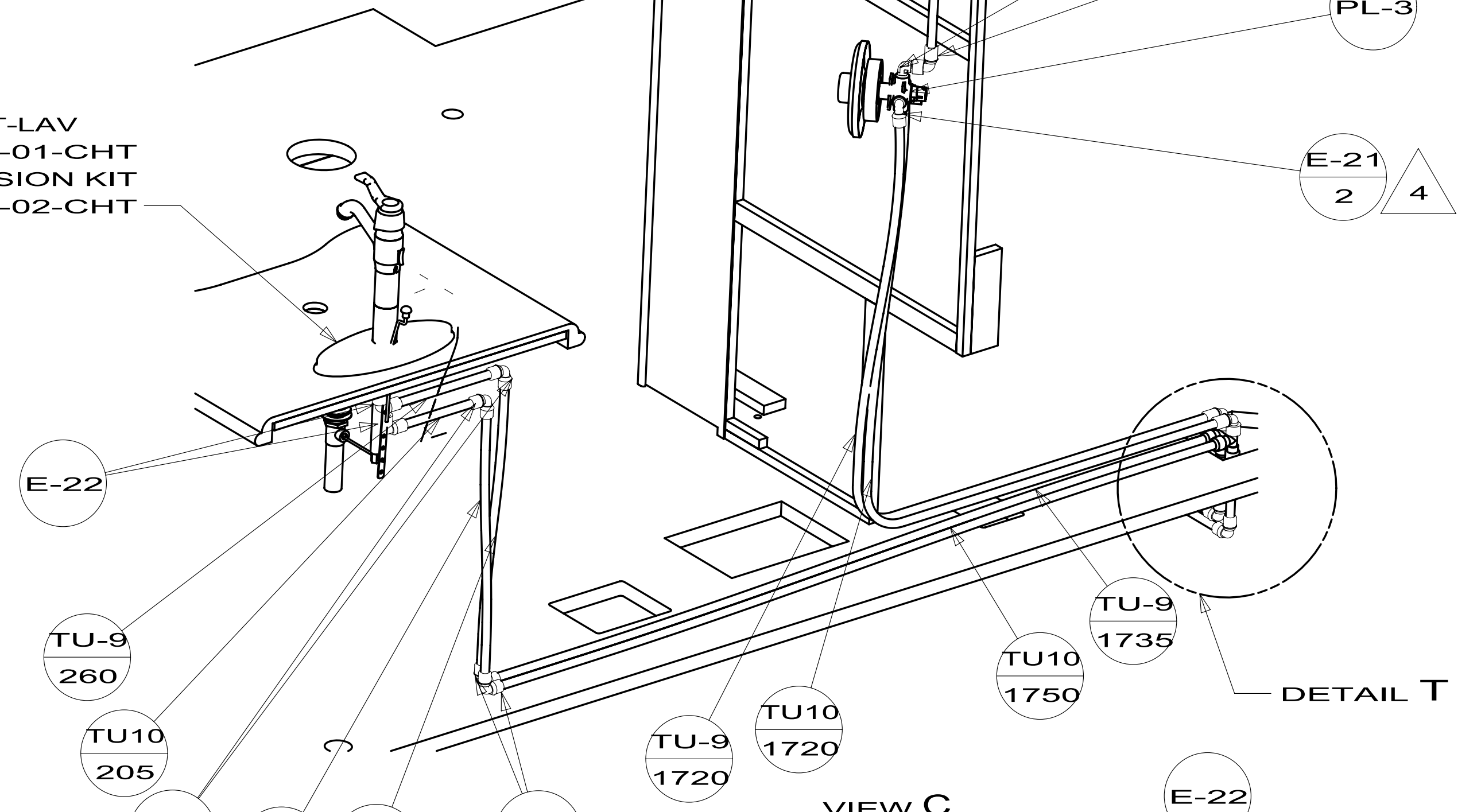


VIEW A
(SHOWN W/OUT COUNTERTOP)

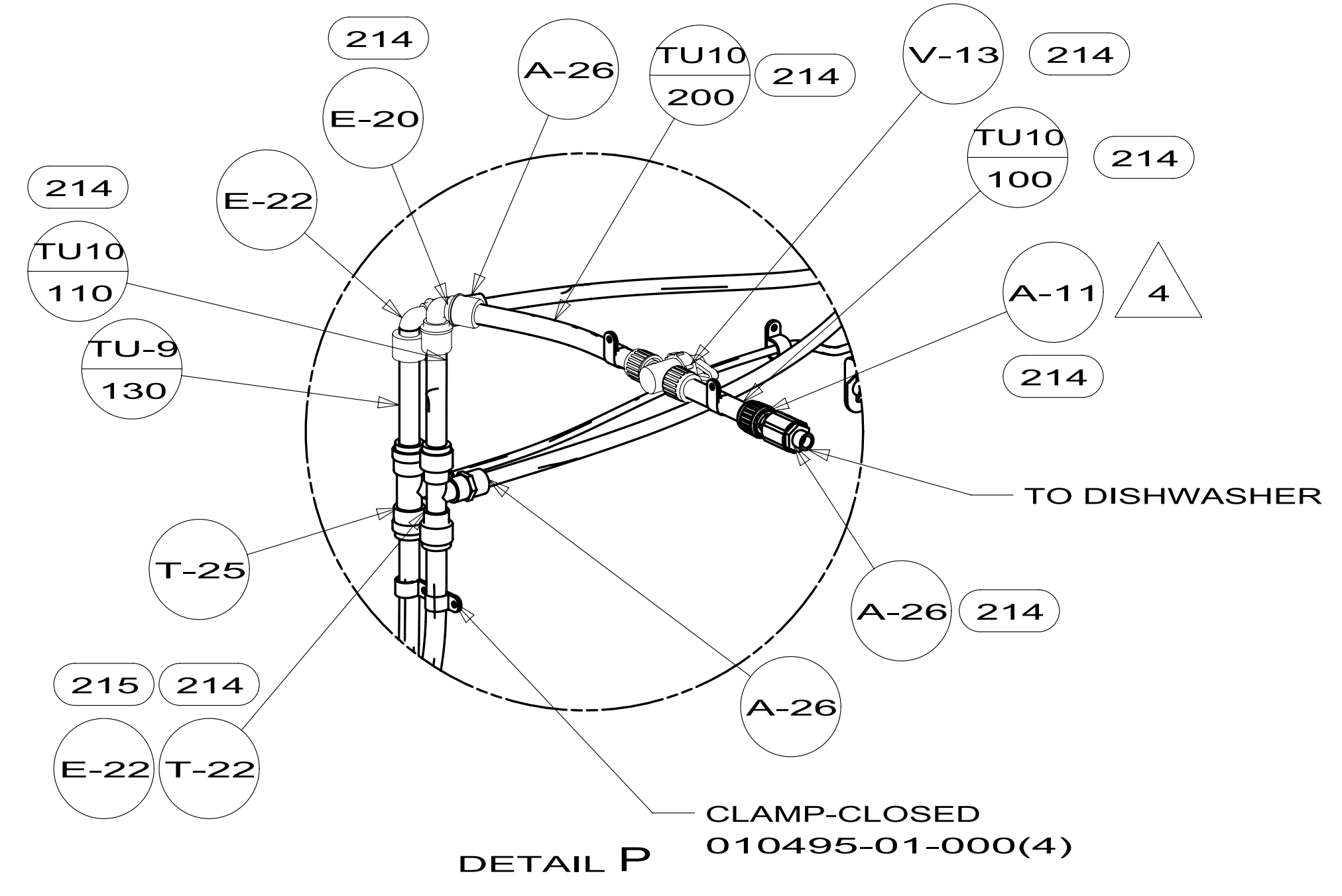


SECTION E-E

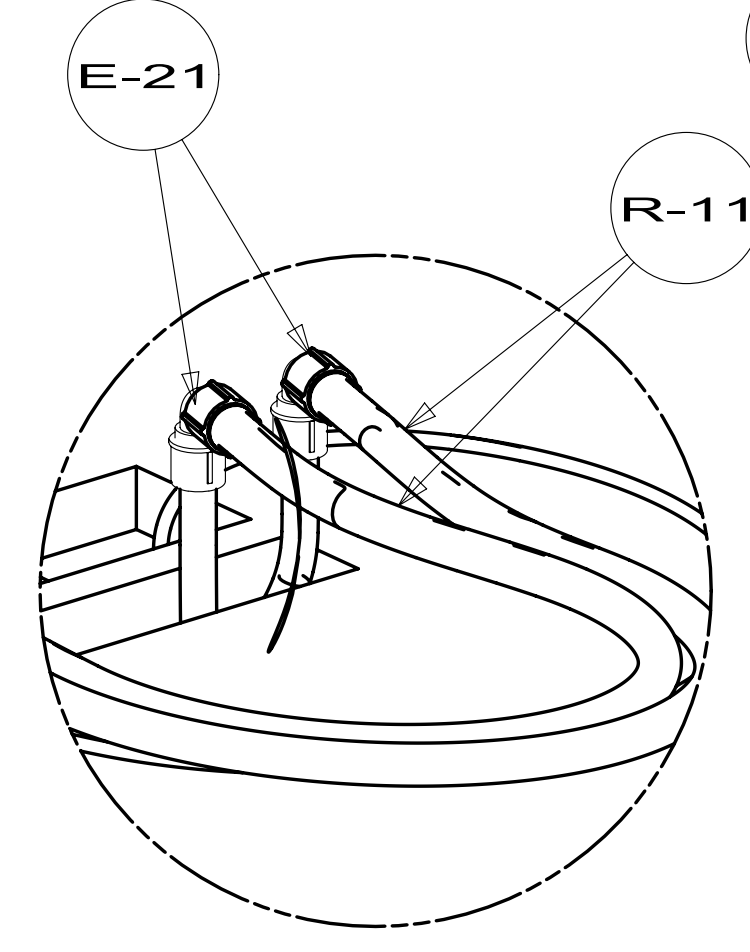
FAUCET-LAV
155716-01-CHT
EXTENSION KIT
155716-02-CHT



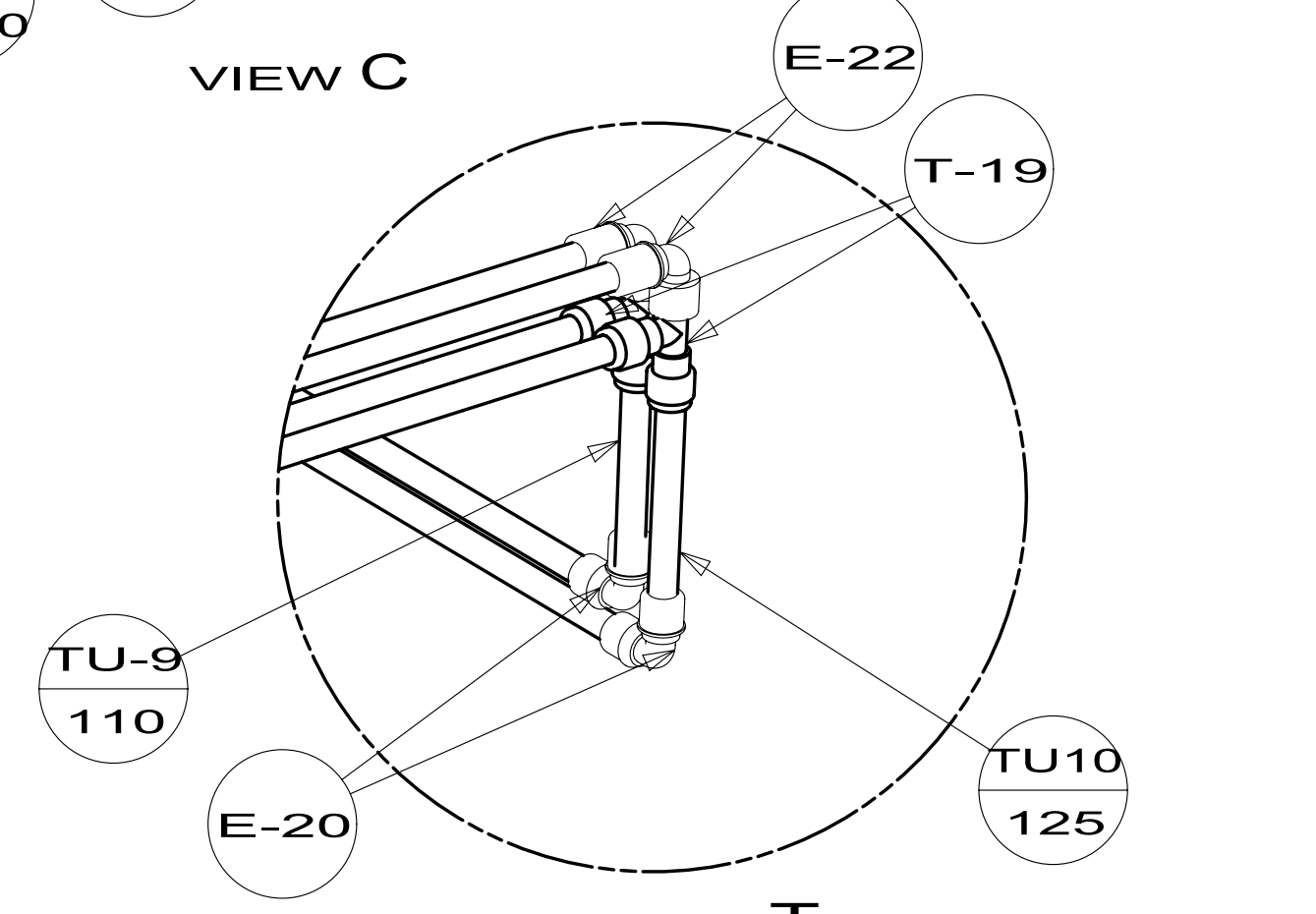
VIEW C



DETAIL P



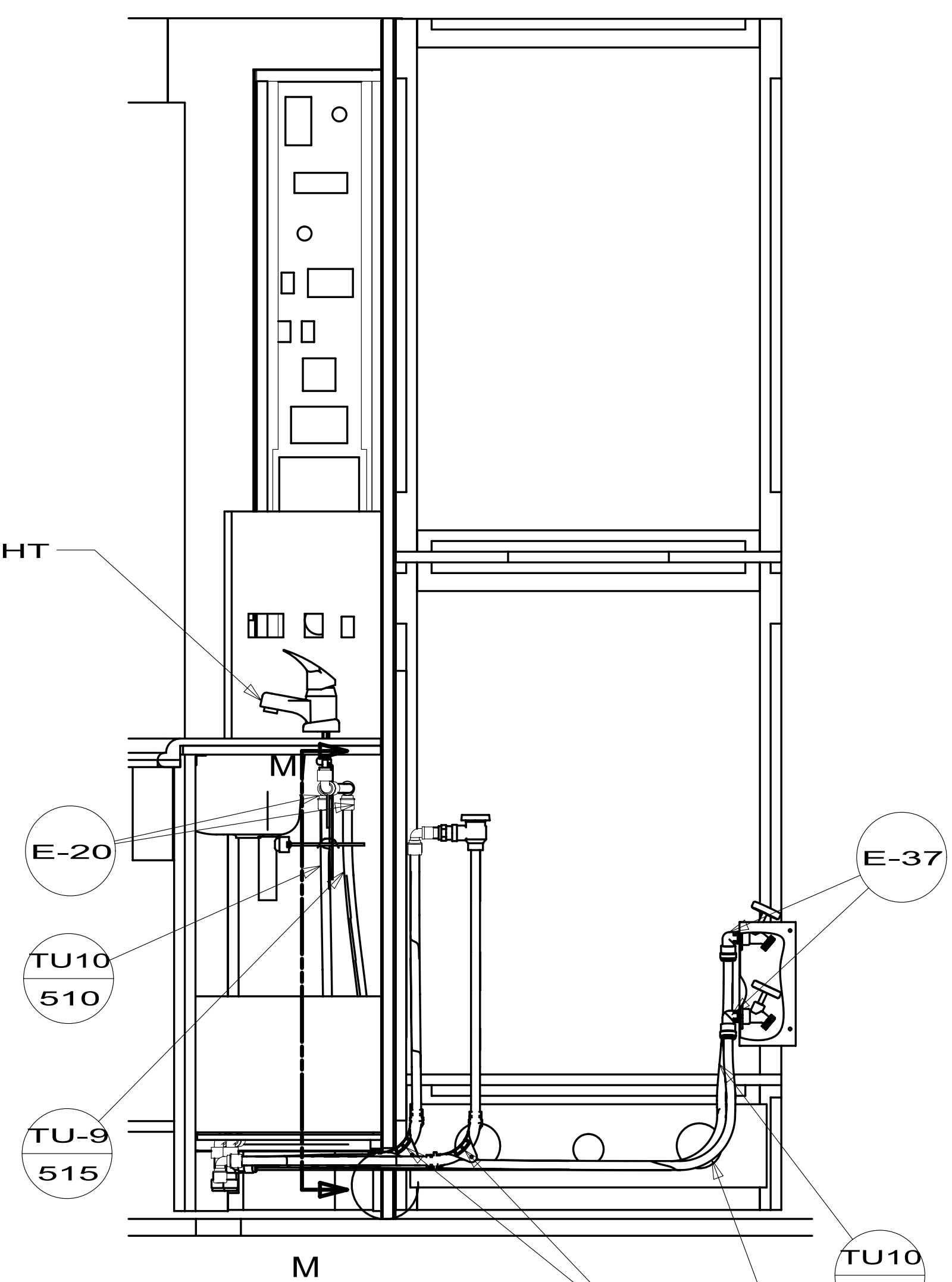
DETAIL S
(SHOWN W/OUT CABINETS)



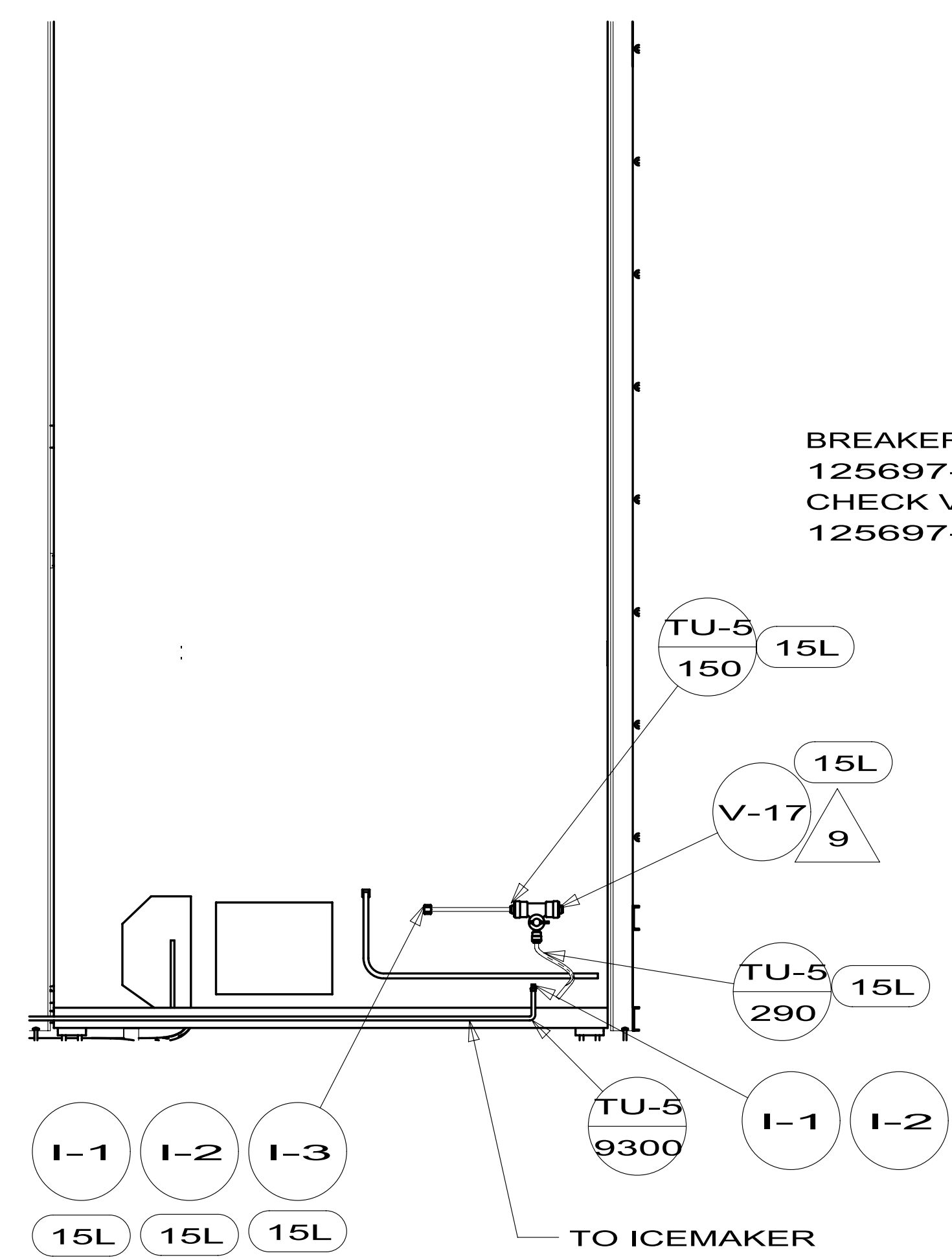
DETAIL T
(SHOWN W/OUT CABINETS AND FLOOR)

FIRST USED	12 R42AD	
TITLE:	DO NOT SCALE DRAWING	
	WATER SYSTEM INSTL	
SHEET 2	PART NO. 179087	REV

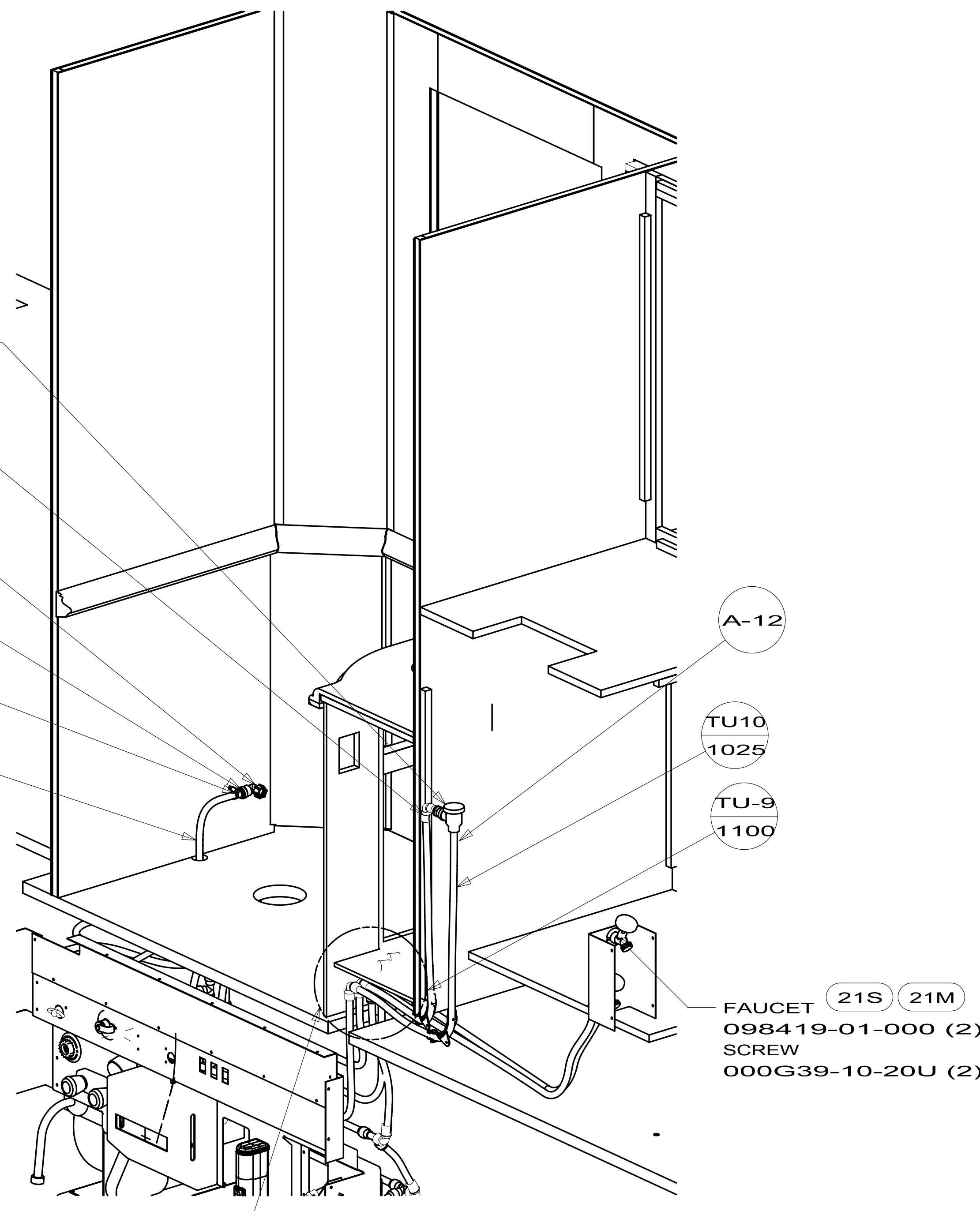
FAUCET
170451-01-CHT



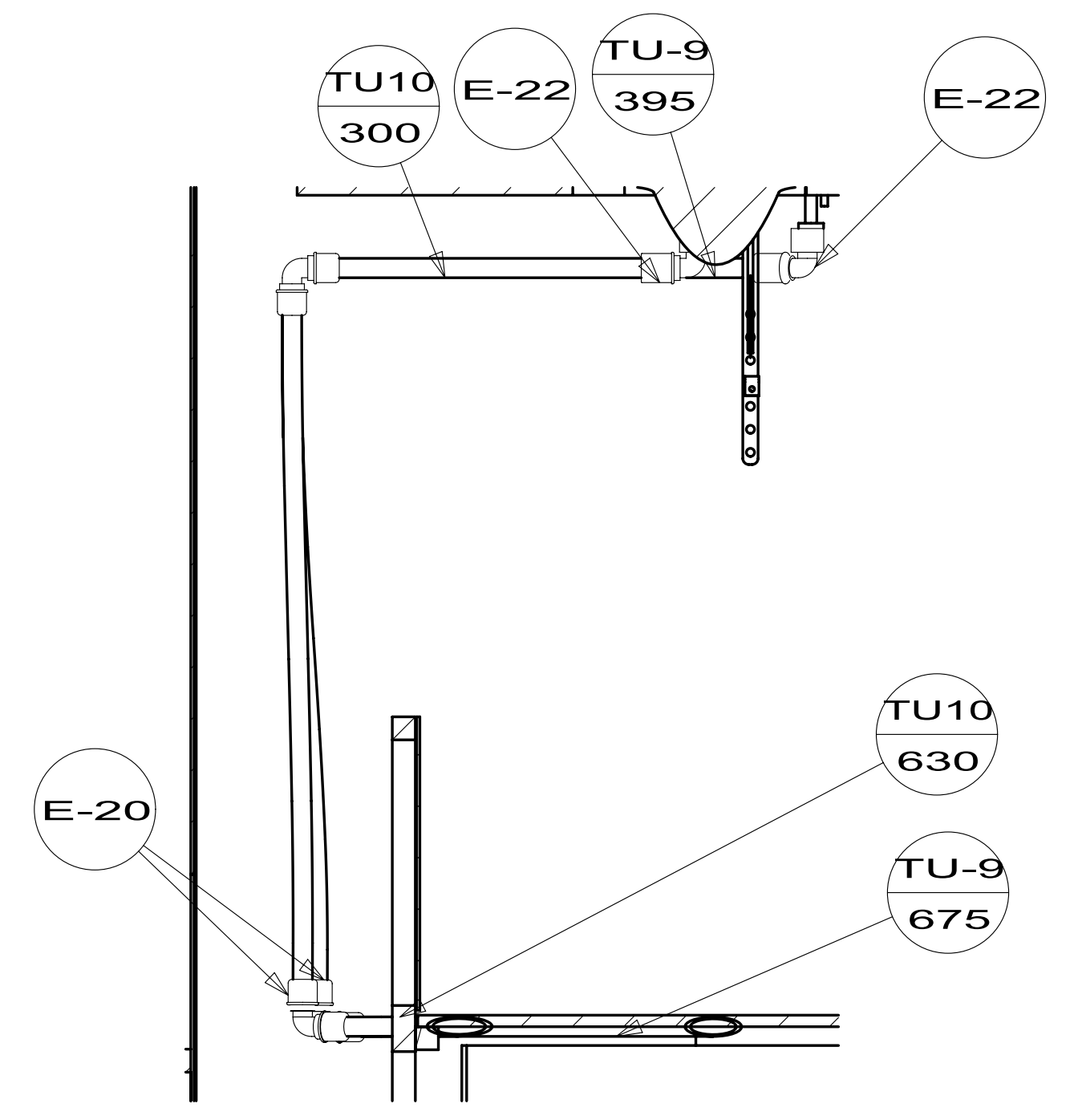
VIEW B



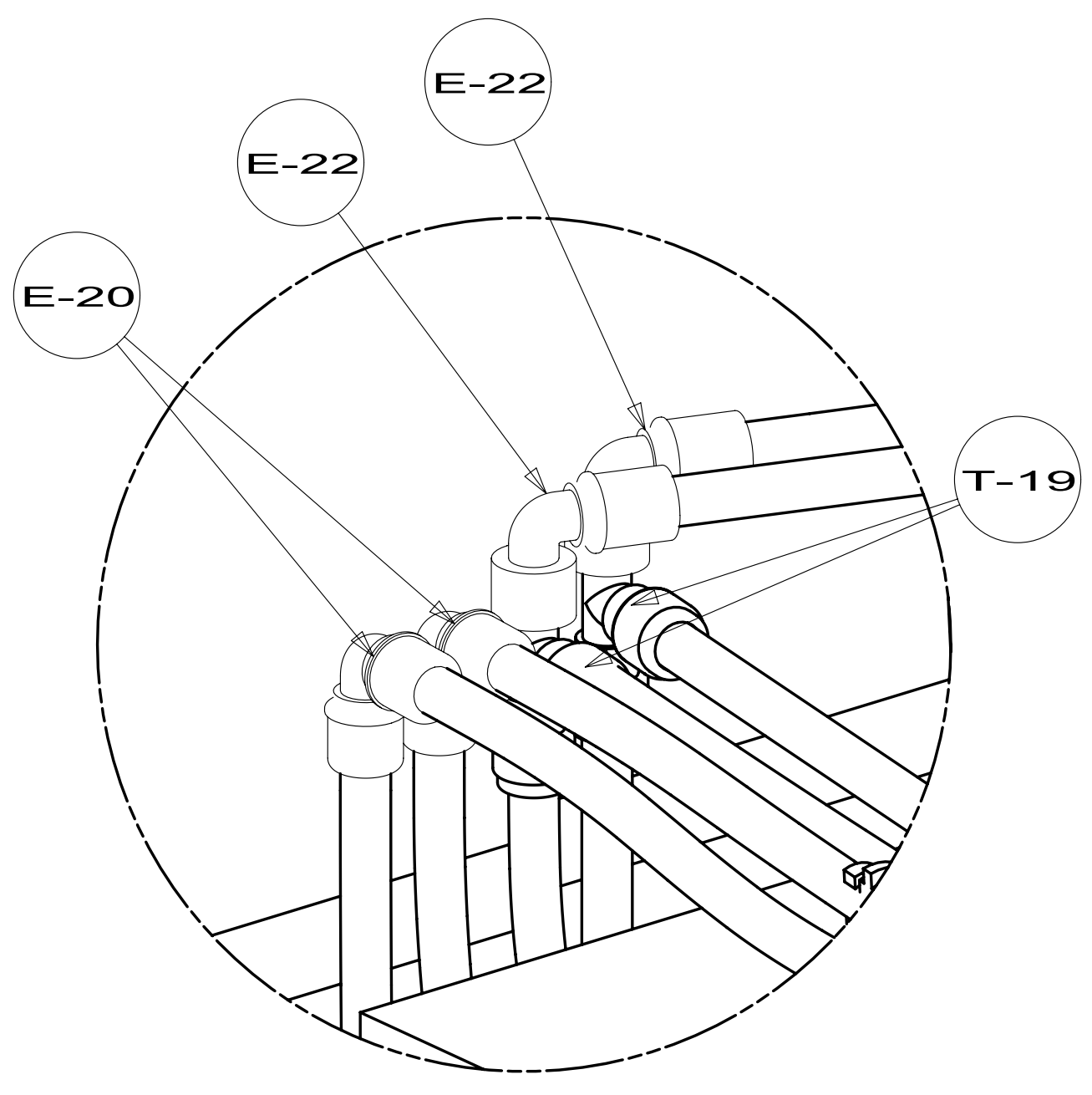
VIEW R



VIEW D

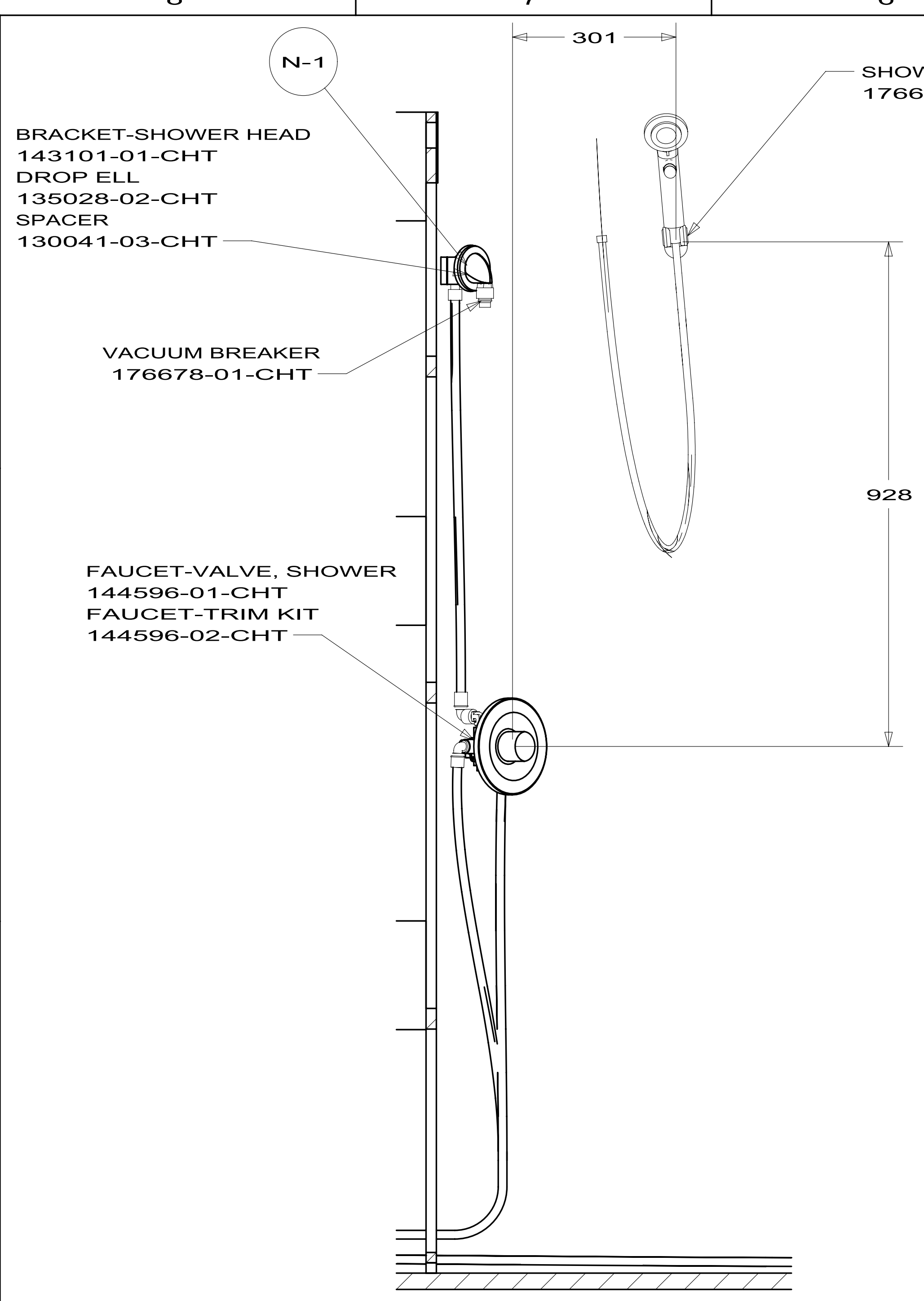


SECTION M-M



DETAIL F
(SHOWN W/OUT CABINETS)

FIRST USED	12 R42AD	
TITLE:	DO NOT SCALE DRAWING	
TITLE:	WATER SYSTEM INSTL	
SHEET 3	PART NO	179087
	REV	

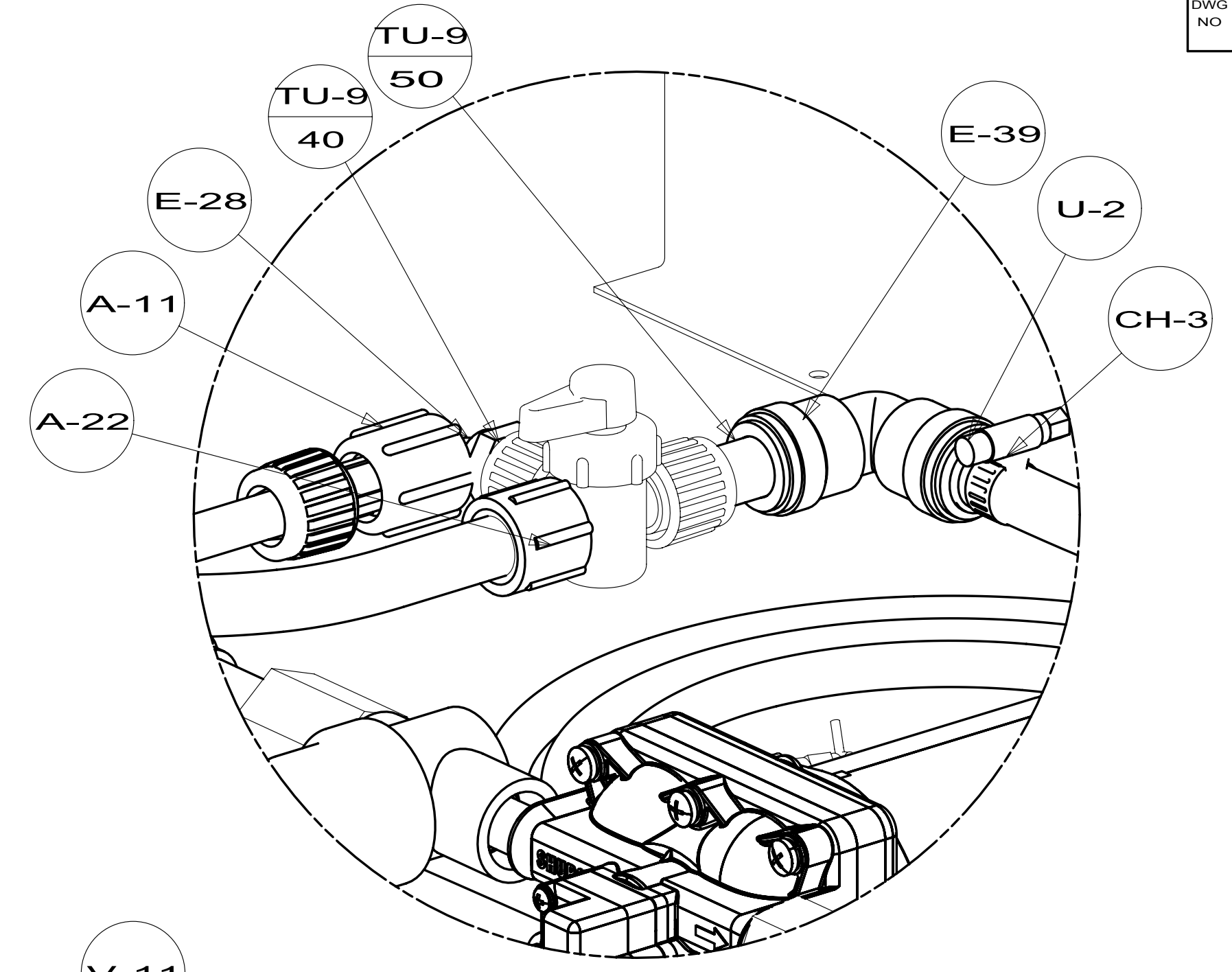


BRACKET-SHOWER HEAD
143101-01-CHT
DROP ELL
135028-02-CHT
SPACER
130041-03-CHT

VACUUM BREAKER
176678-01-CHT

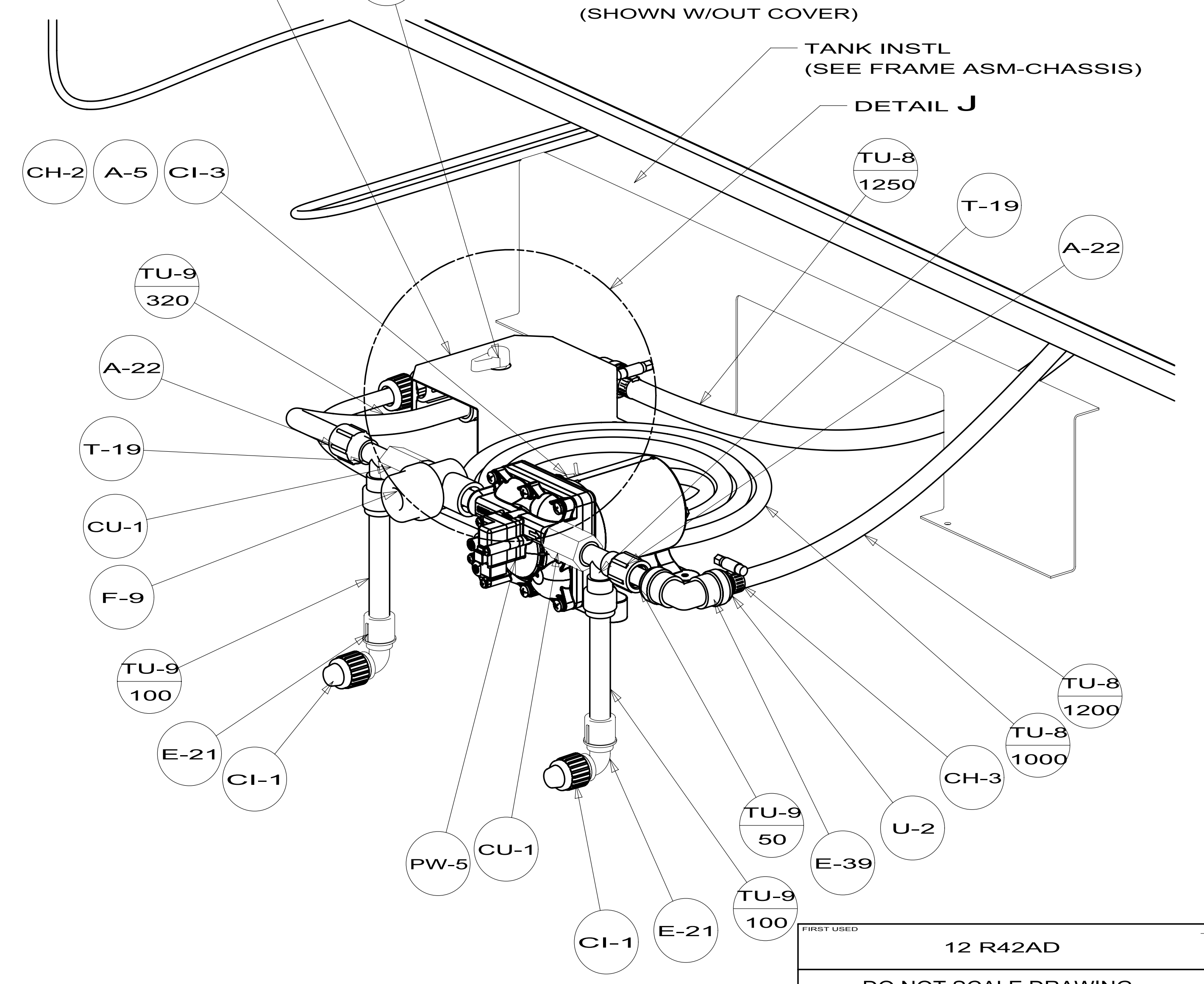
FAUCET-VALVE, SHOWER
144596-01-CHT
FAUCET-TRIM KIT
144596-02-CHT

SECTION H-H



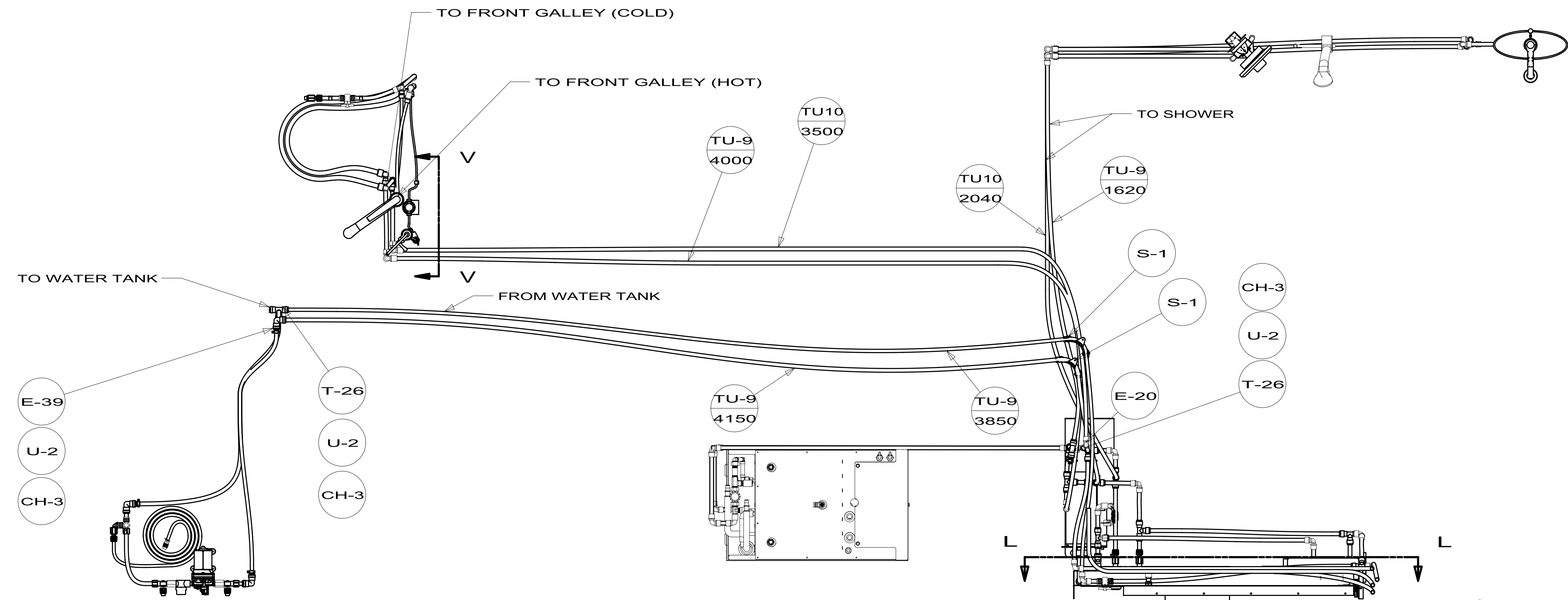
DETAIL J
(SHOWN W/OUT COVER)

COVER-VALVE, BYPASS
138618-03-CHT

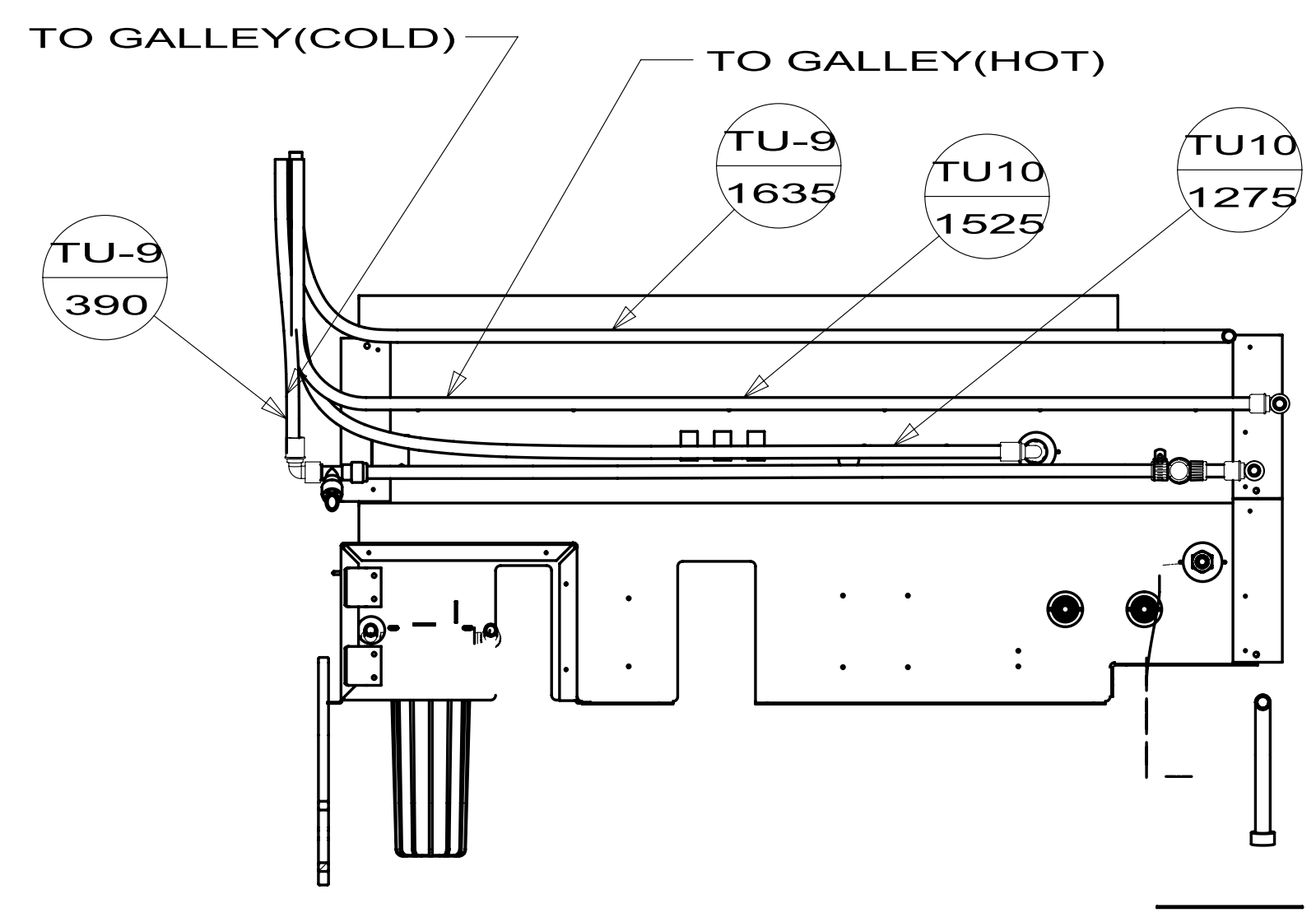


VIEW G

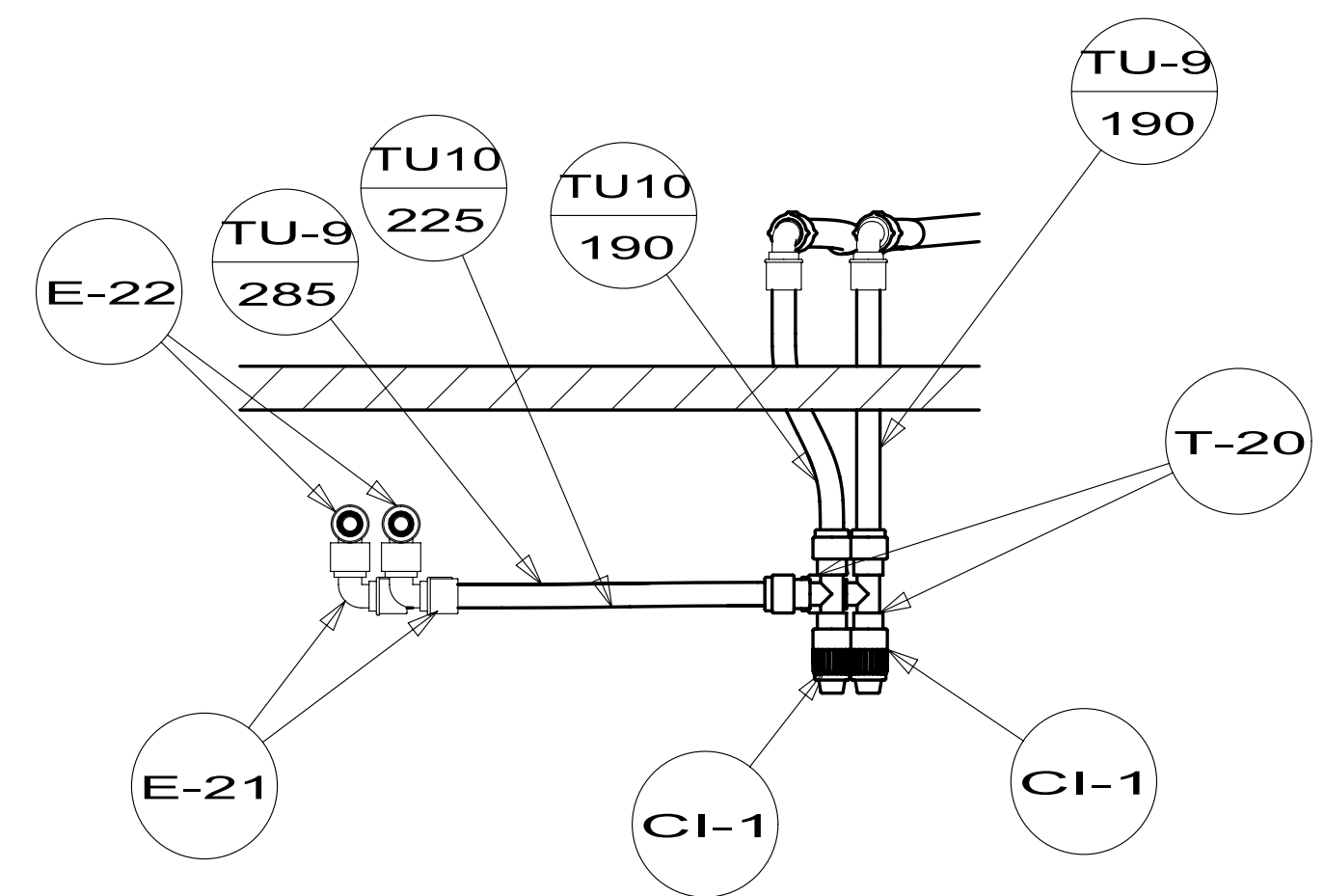
FIRST USED	12 R42AD	
TITLE:	DO NOT SCALE DRAWING	
	WATER SYSTEM INSTL	
SHEET 4	PART NO 179087	REV



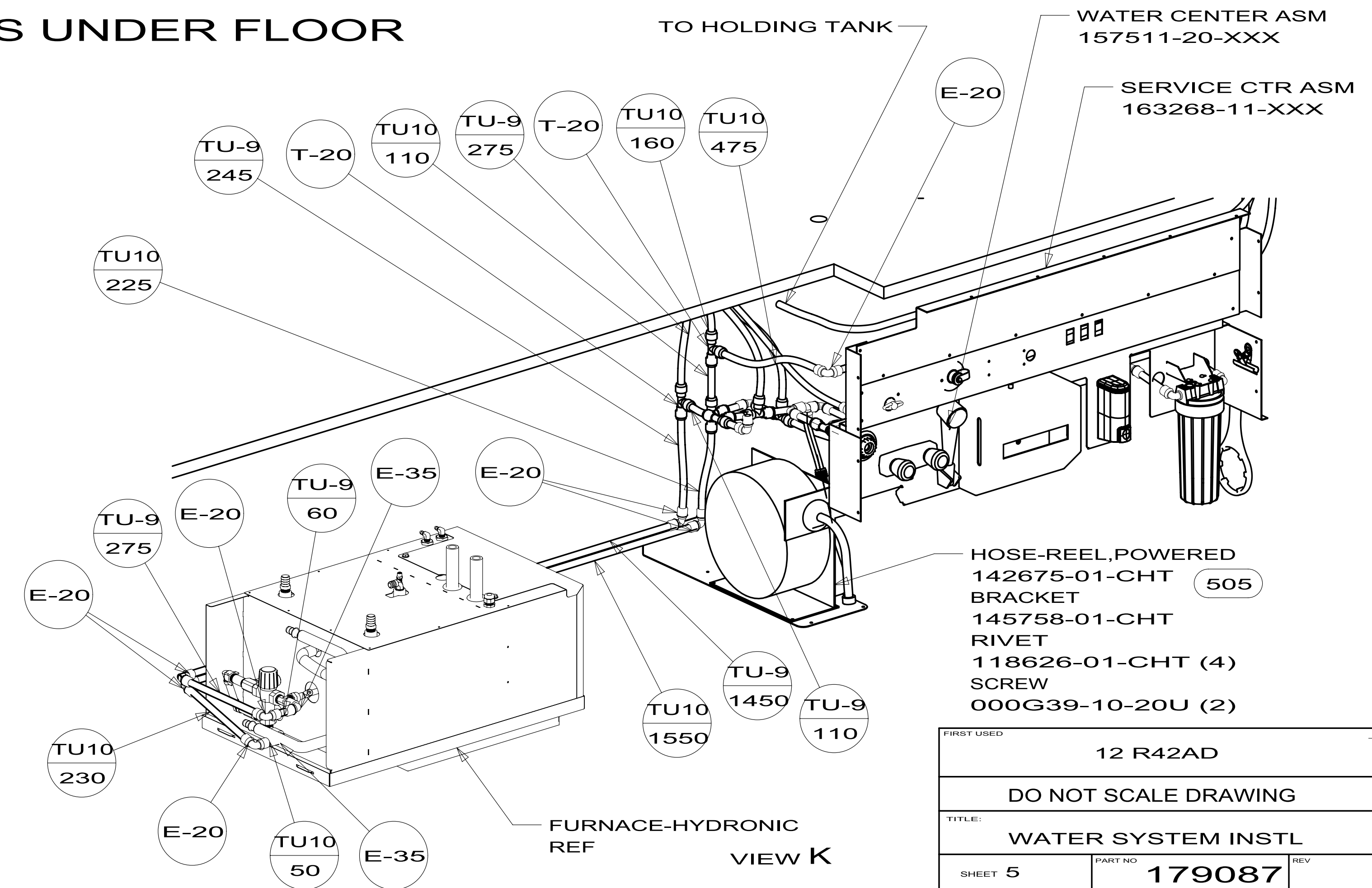
SHOWING LINES UNDER FLOOR



SECTION L-L (ROTATED)



SECTION V-V



FURNACE-HYDRONIC REF
VIEW K

FIRST USED	12 R42AD	
TITLE:	DO NOT SCALE DRAWING	
	WATER SYSTEM INSTL	
SHEET 5	PART NO 179087	REV