

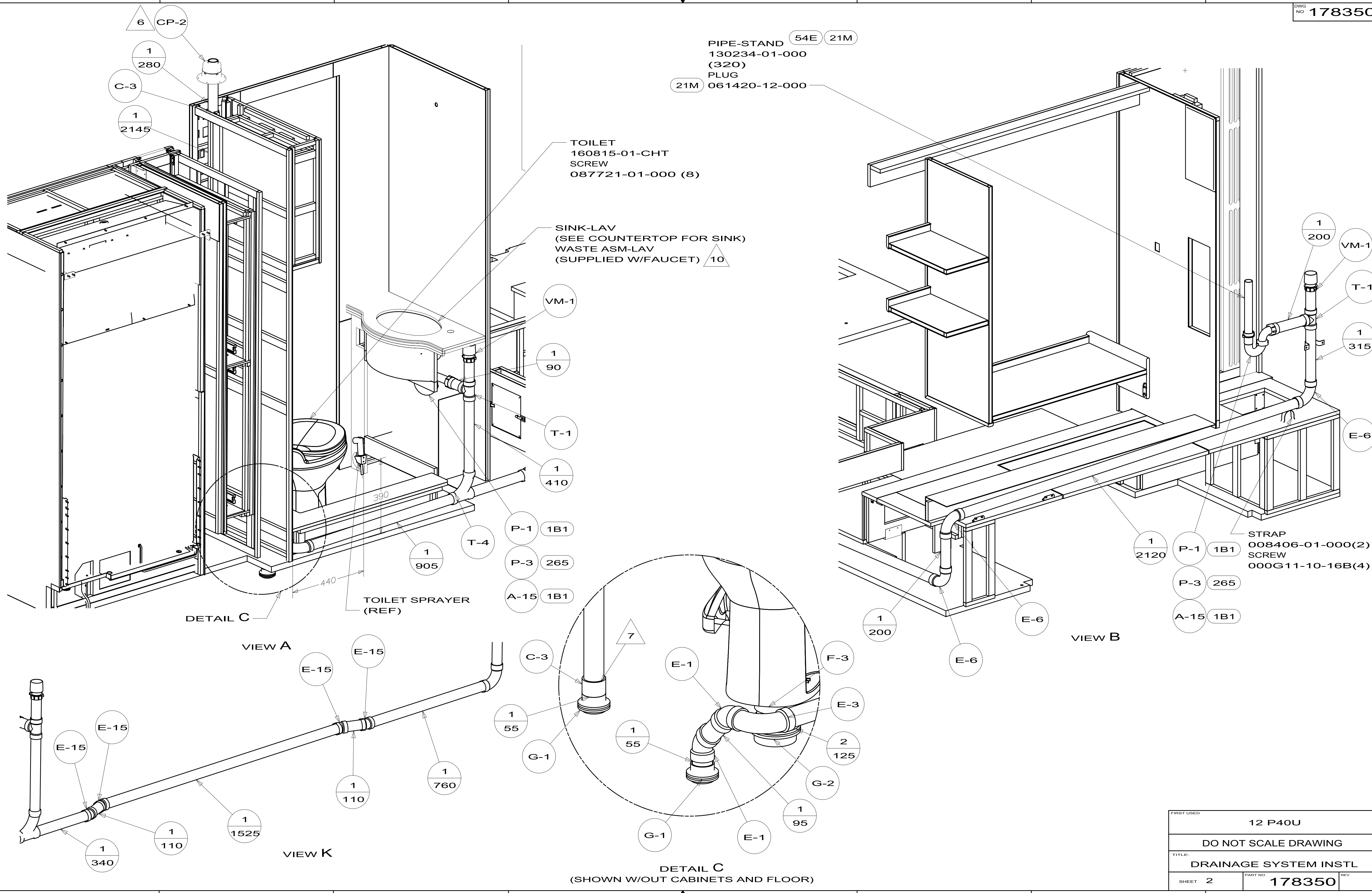
- 1B1 CODES/STANDARDS USA
- 265 CODES/STANDARDS-CSA/CMVSS
- 54E WASHER/DRYER_COMBO
- 21M WASHER/DRYER PREP

- 10 ADD TEFLON TAPE 010405-01-000.
- 9 APPLY PRIMER 126427-02-000 AND CEMENT 126427-01-000 BETWEEN ELBOW AND FLEX PIPE.
- 8. SECURE DRAINAGE PIPES TO CABINET USING WIRE TIE 108046-02-000, AND SCREW 000G67-10-12B AT INTERVALS OF NOT MORE THAN 4 FEET APART.
- 7 SECURE VENT PIPE TO FLOOR WITH CLAMP 062401-02-000 (2), SCREW 000G67-10-12B (2), BRACKET 136878-01-CHT (2).
- 6 VENT PIPE MUST PROJECT 51 MIN AND 64 MAX ABOVE ROOF FOR PROPER FIT AND FUNCTION.
- 5. SEAL AROUND SHOWER WITH SILICONE.
- 4 USE SMOOTH PLUMBERS PUTTY 167459-01-000 TO SEAL STRAINER (0.2 PER STRAINER).
- 3. ALL PIPE AND FITTINGS TO BE ASSEMBLED WITH SOLVENT 004020-01-000 (USA), 004020-02-000 (CAN)
- 2. SLOPE OF TRAP ARM MUST BE 6 PER 305 mm.
- 1. SLOPE OF HORIZONTAL PIPING TO BE MINIMUM OF 3 PER 305 mm.

		COPYRIGHT 2011 WINNEBAGO INDUSTRIES, INC.	
DTR	ORIG. DATE		
CHKR	ALL DIMENSIONS ARE IN MILLIMETERS		
P.E.	FIRST USED		
M.E.	12 P40U		
DSNR			
UNSPECIFIED TOLERANCES ARE:		MATERIAL:	
WHOLE DIM (X)	: 3		
ONE-PLACE (X.X)	: 1.5		
TWO-PLACE (X.XX)	: 0.50		
ANGLE	: 1°		
THIRD ANGLE PROJECTION			
DO NOT SCALE DRAWING		REFER TO ES0018 FOR FASTENER TIGHTENING GUIDELINES	
TITLE: DRAINAGE SYSTEM INSTL			
SHEET 1 OF 4	PART NO	178350	REV
REF:		1	11/14/2011

FOR
DRAINAGE
CALLOUTS
SEE DWG NO
116229-01-000

NOTES:



PIPE-STAND 54E 21M
 130234-01-000 (320)
 PLUG 21M
 061420-12-000

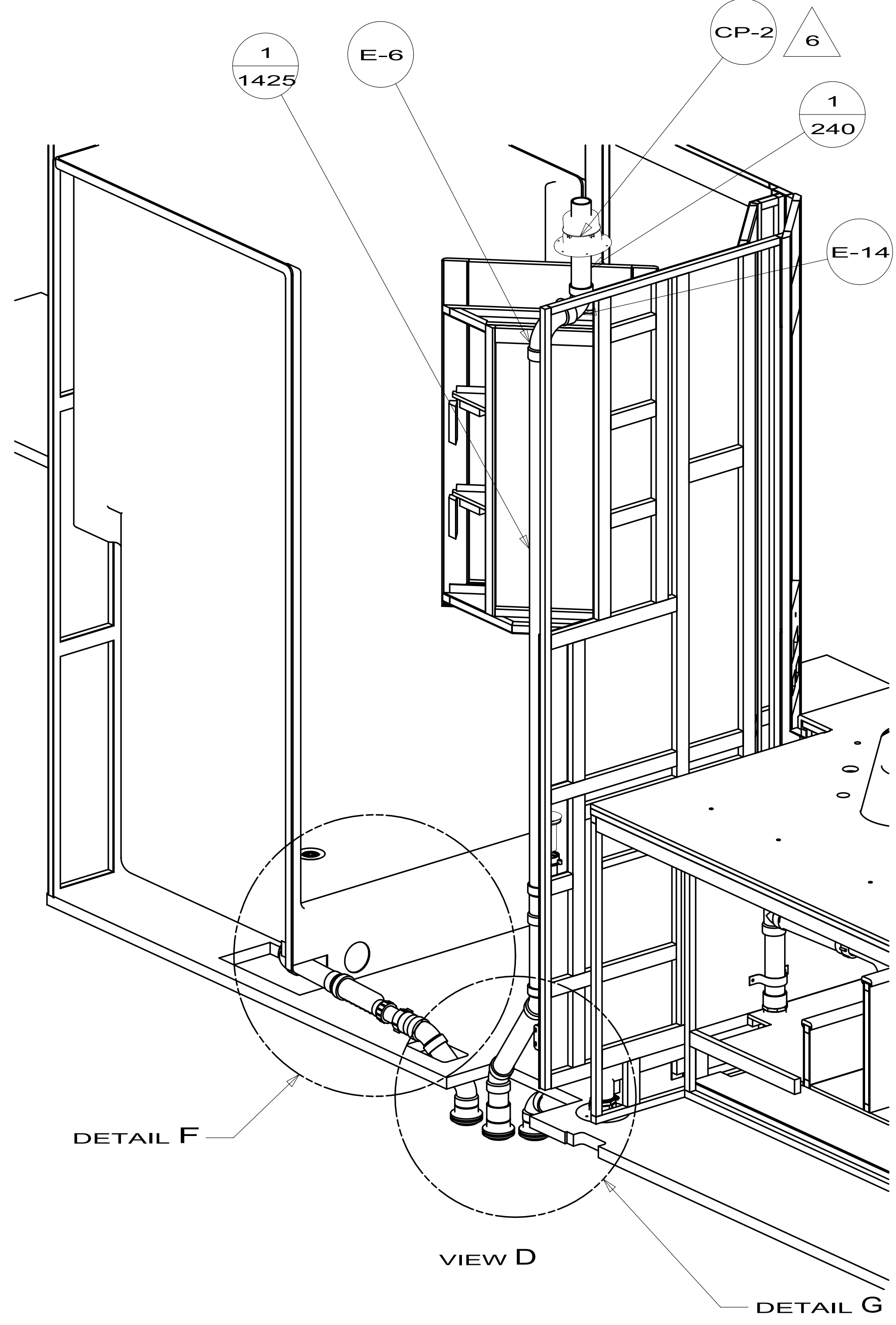
TOILET 160815-01-CHT
 SCREW 087721-01-000 (8)

SINK-LAV (SEE COUNTERTOP FOR SINK)
 WASTE ASM-LAV (SUPPLIED W/FAUCET) 10

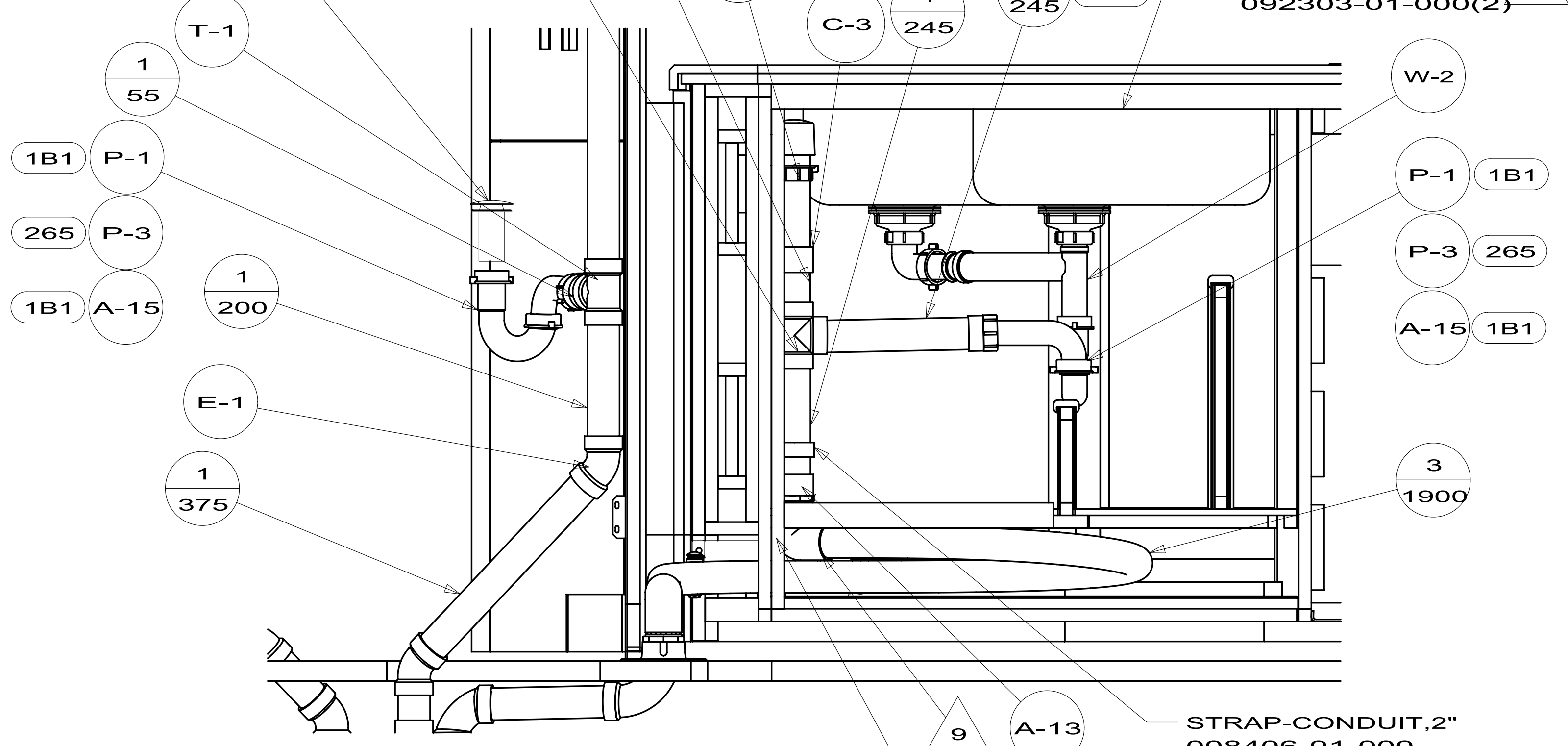
STRAP 008406-01-000(2)
 SCREW 000G11-10-16B(4)

DETAIL C (SHOWN W/OUT CABINETS AND FLOOR)

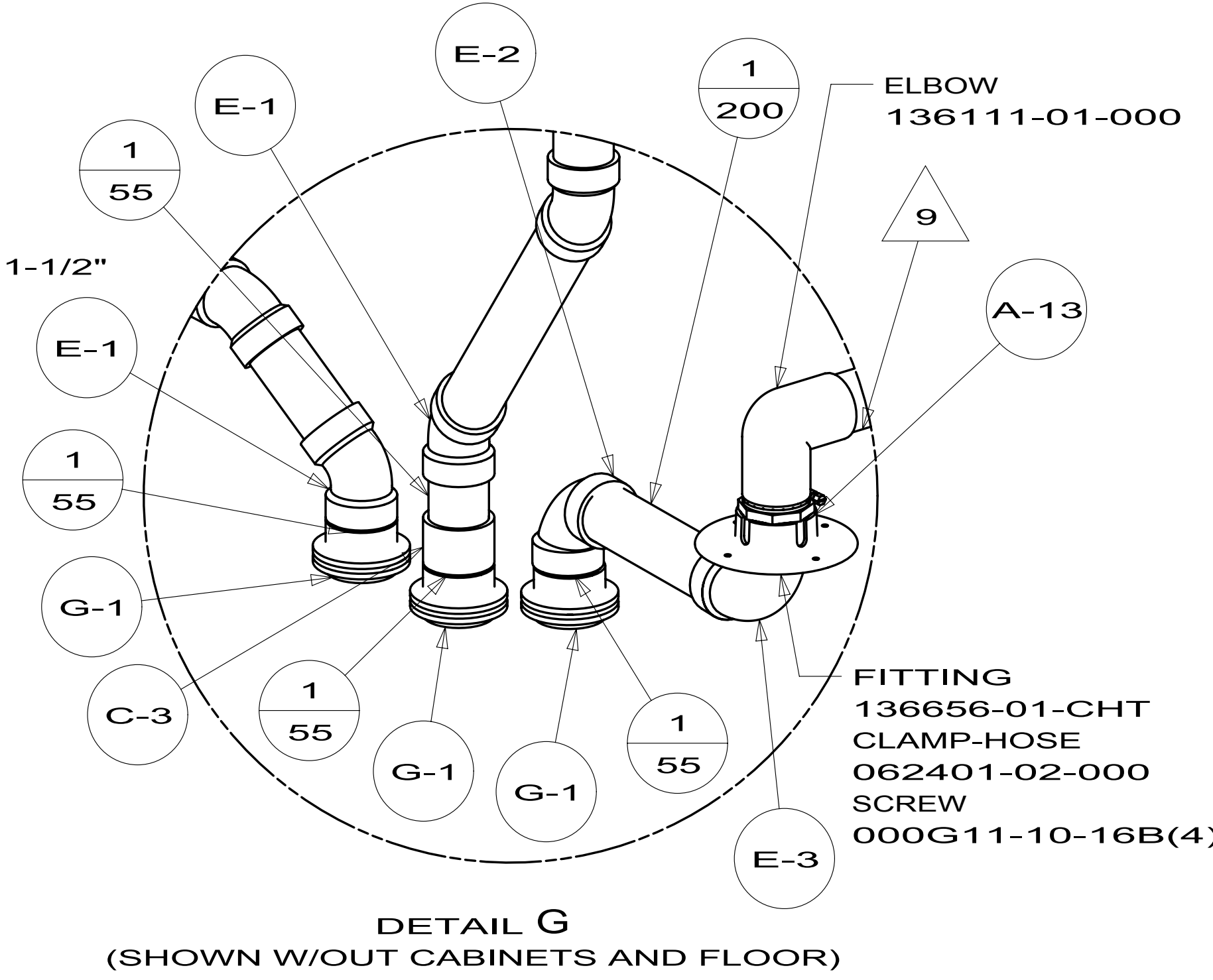
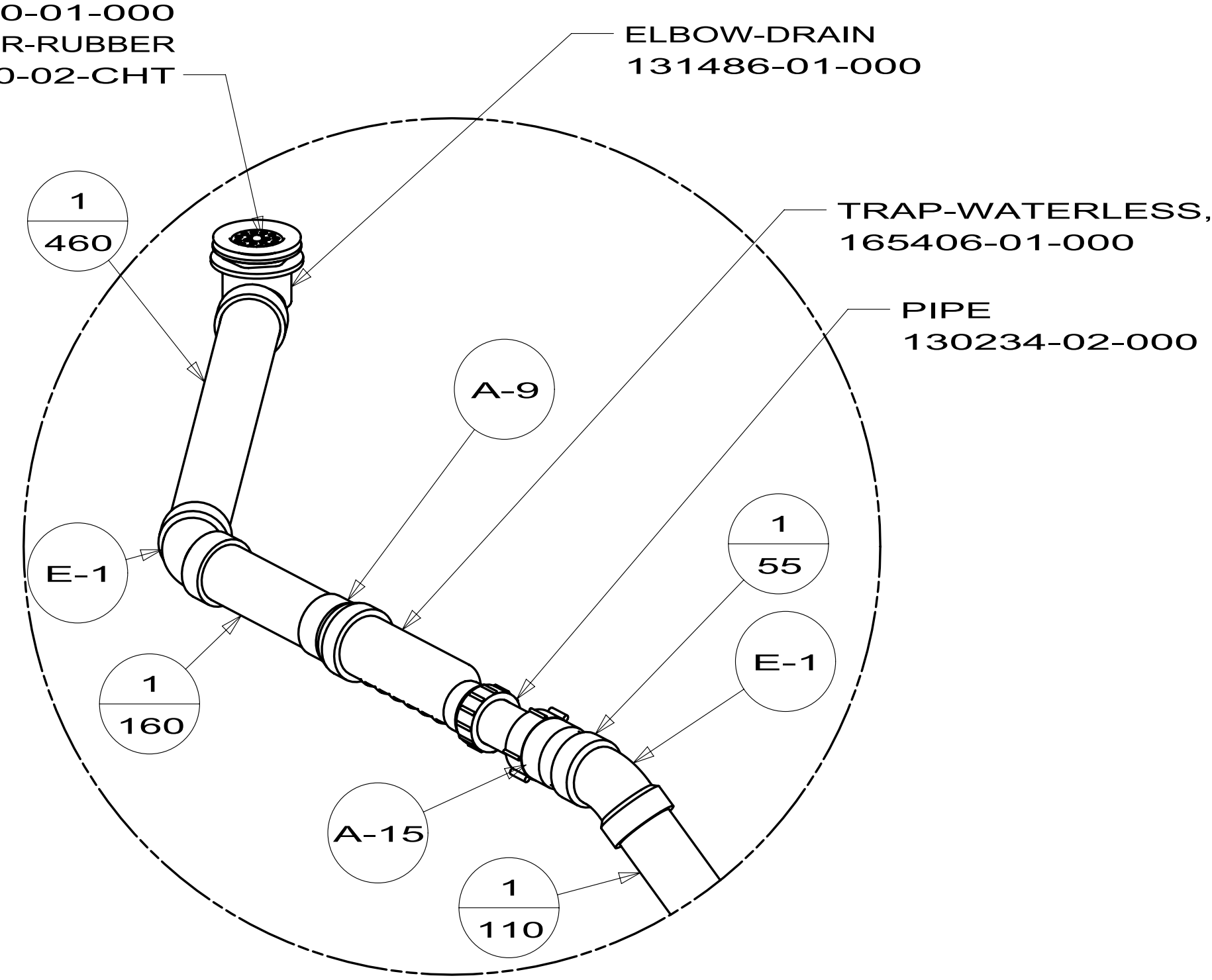
FIRST USED	12 P40U	
TITLE:	DO NOT SCALE DRAWING	
	DRAINAGE SYSTEM INSTL	
SHEET 2	PART NO. 178350	REV



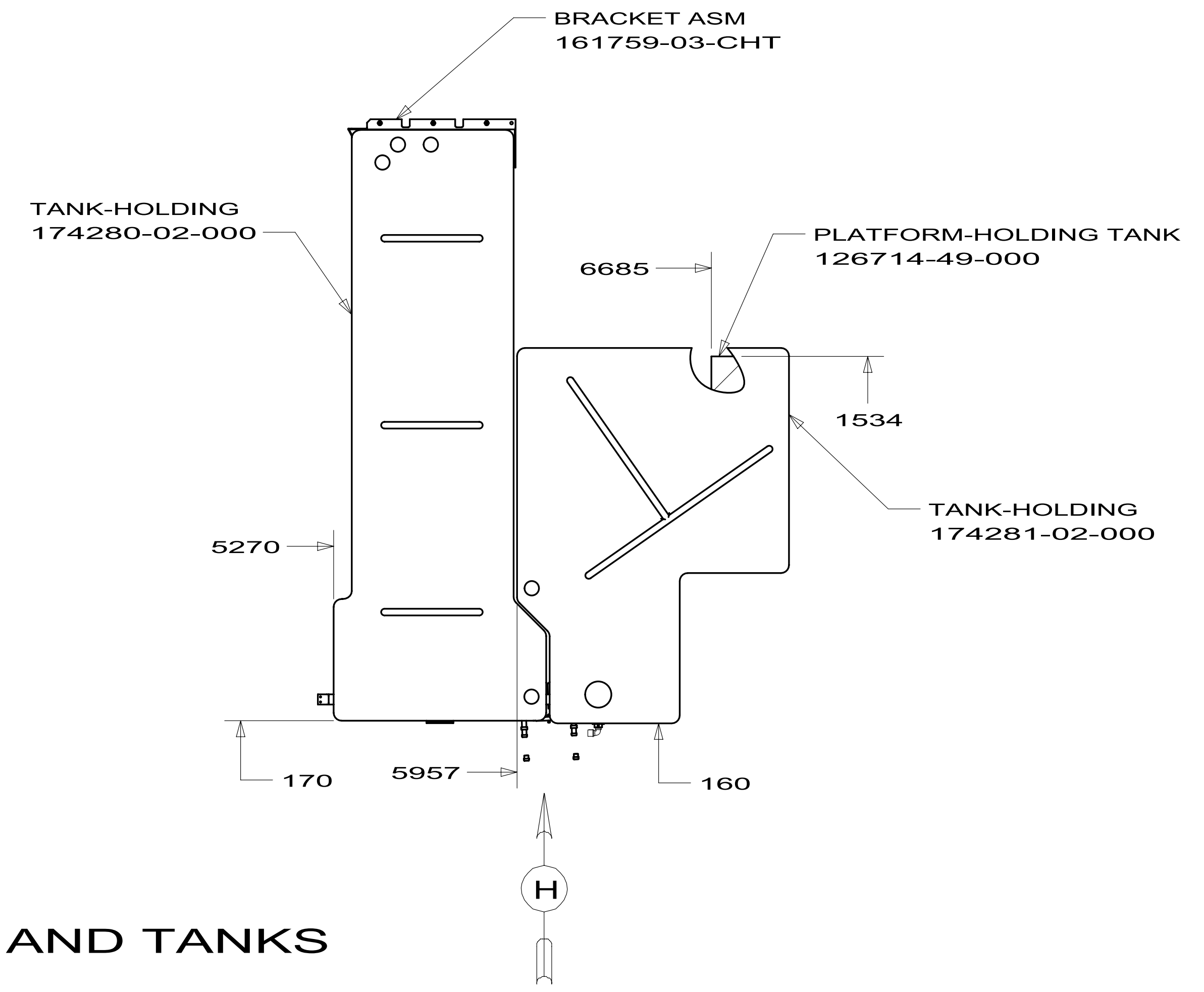
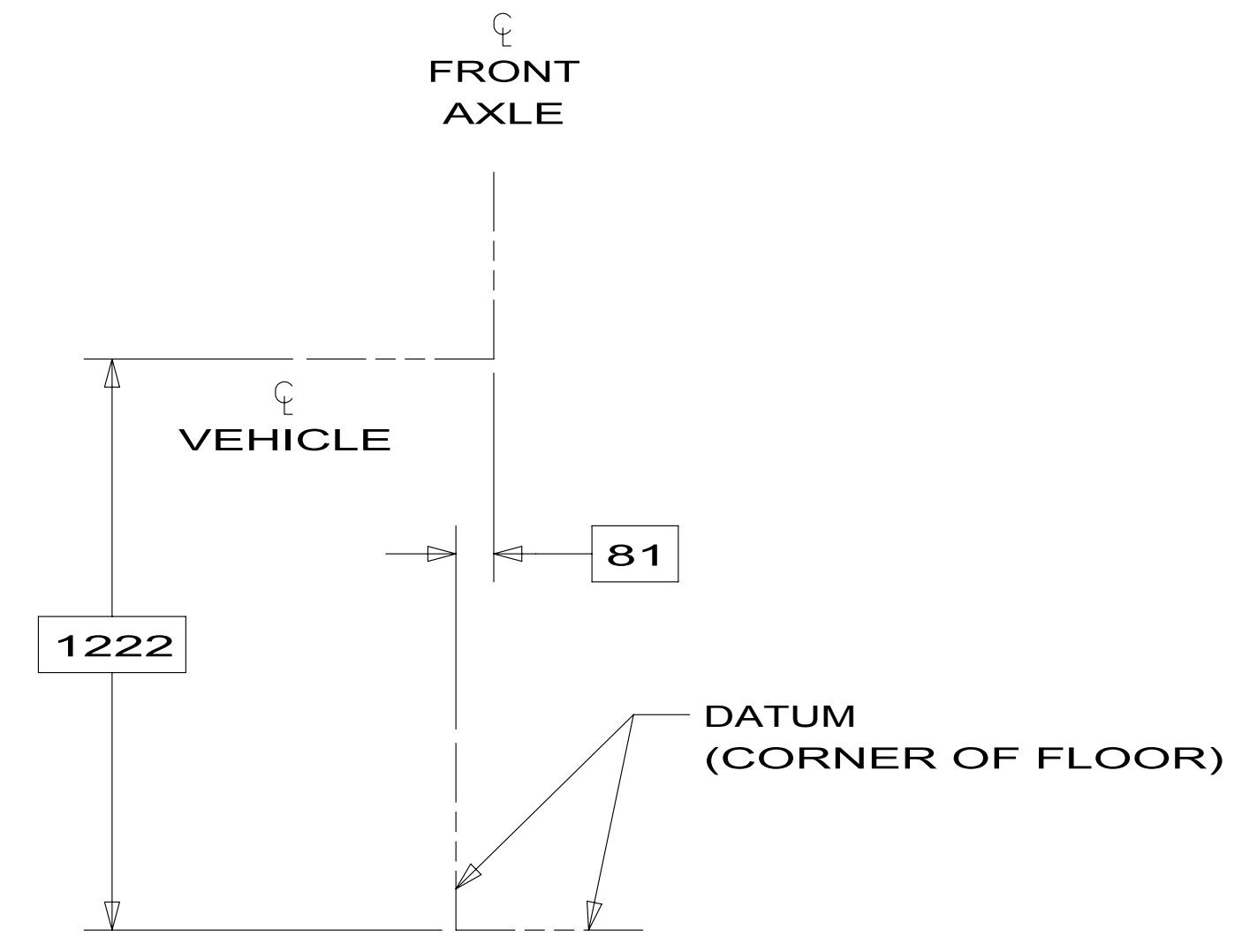
SINK-LAV
(SEE COUNTERTOP FOR SINK)
WASTE ASM
176640-03-CHT



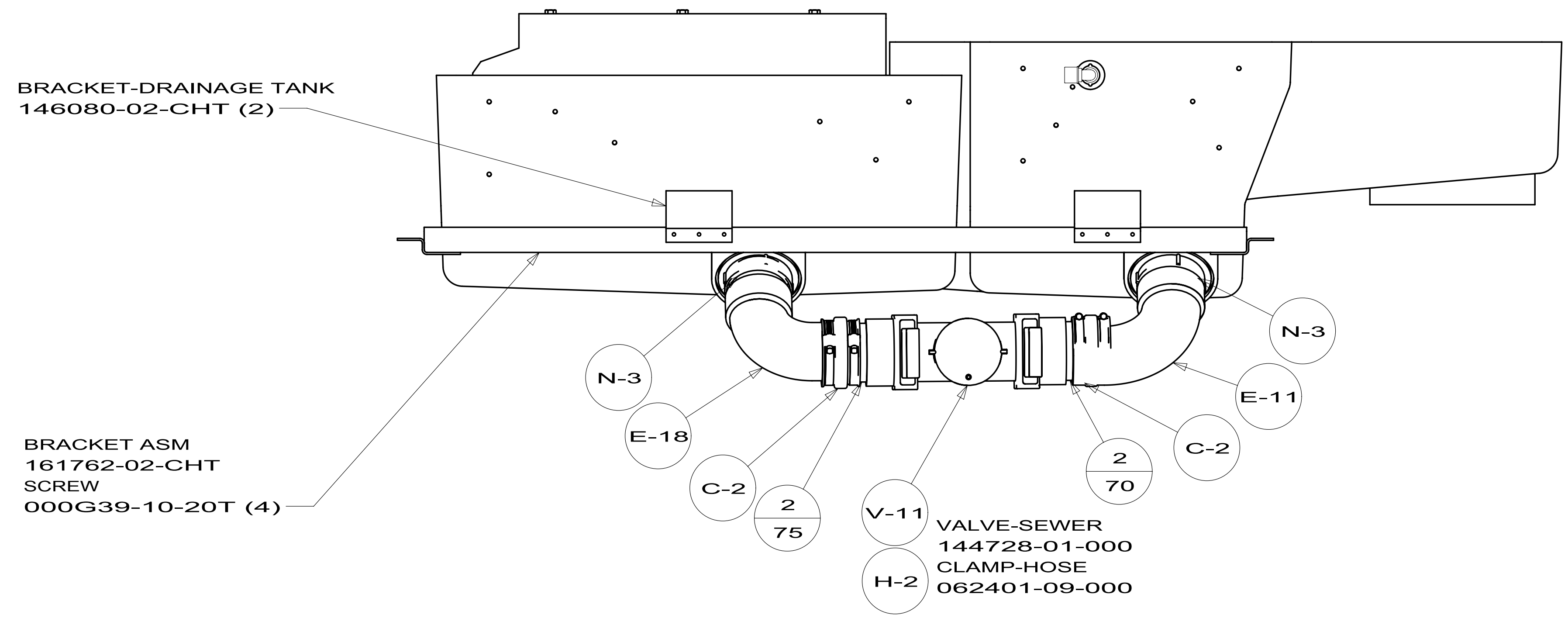
SHOWER INSTL
174289-02-CHT
STRAINER
066440-01-000
WASHER-RUBBER
127440-02-CHT



FIRST USED	12 P40U		
TITLE:	DO NOT SCALE DRAWING		
TITLE:	DRAINAGE SYSTEM INSTL		
SHEET 3	PART NO	178350	REV

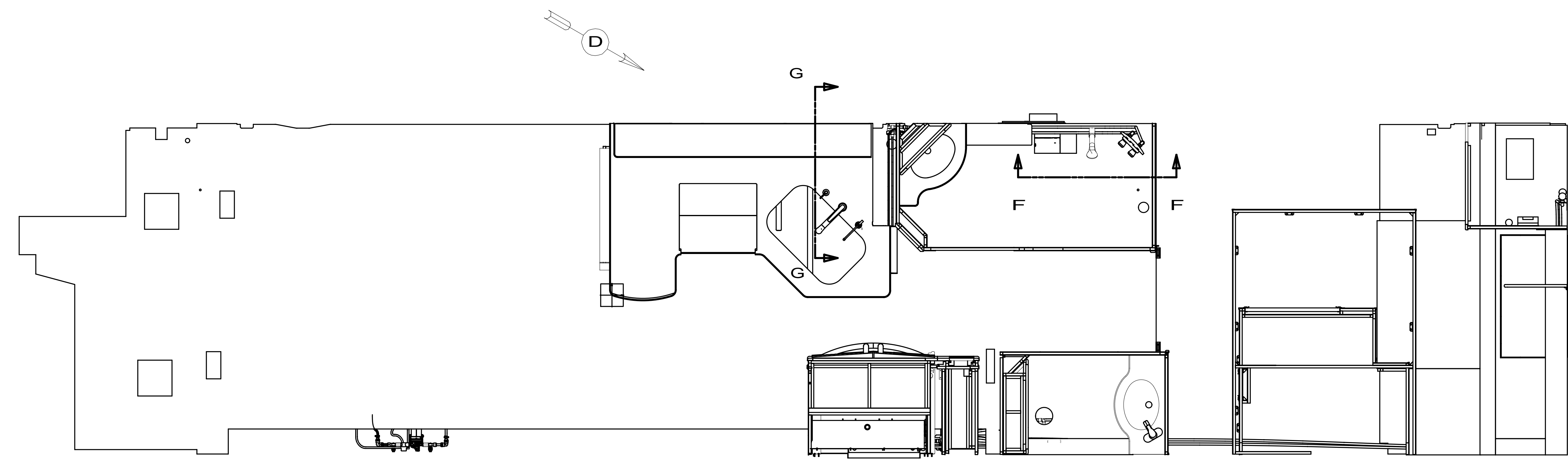


SHOWING ONLY DRAINS AND TANKS



VIEW H

FIRST USED		12 P40U	
DO NOT SCALE DRAWING			
TITLE: DRAINAGE SYSTEM INSTL			
SHEET 4	PART NO	178350	REV



- 10 INSTALL FAUCET WITHOUT BASE PLATE.
- 9 FAUCET TO BE TURNED SO SHOWER CONNECTION IS FACING UP. REVERSE H/C CAPS.
- 8 VALVE MUST REMAIN OPEN AFTER WATER TEST.
- 7 WIRE TIE WATER LINES W/FLEXIBLE DRAIN LINE.
- 6 CLAMP ICEMAKER LINE TO SIDEWALL, AWAY FROM BURNER BOX ON REFRIGERATOR.
- 5 ADD TEFLON TAPE 010405-02-000.
- 4 ADD TEFLON TAPE 010405-01-000.

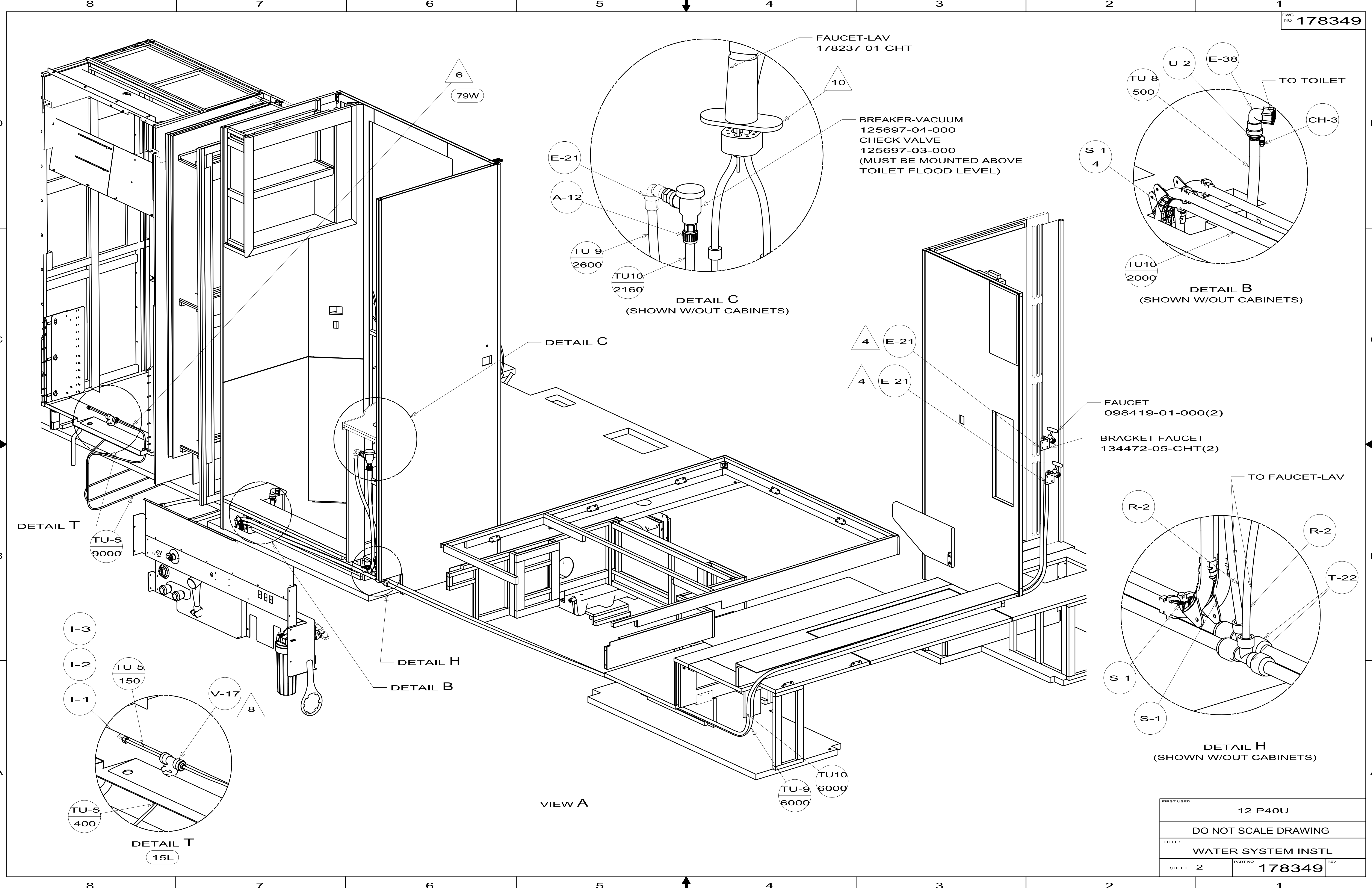
- 3. ALL TUBING TO BE SECURED AT 1200 INTERVALS MAXIMUM WITH CLAMP 010495-01-000 AND SCREW 000G67-10-12B OR EQUIVALENT.
- 2. TUBING TO BE INSTALLED WITH SUFFICIENT SLOPE TO PROVIDE DRAINAGE TO NEAREST VALVE.
- 1. PLASTIC FITTINGS TO BE SEALED WITH SEALANT 084456-01-000.

NOTES:

- 15L REFR/FRZR 2DOOR RESIDENTIAL
- 79W REFRIGERATOR-4 DOOR
- WIN WINNEBAGO ONLY
- ITA ITASCA ONLY

		COPYRIGHT 2011 WINNEBAGO INDUSTRIES, INC.
DTR	ORIG. DATE	
CHKR	ALL DIMENSIONS ARE IN MILLIMETERS	
P.E.		
M.E.	FIRST USED	
DSNR	12 P40U	
UNSPECIFIED TOLERANCES ARE: WHOLE DIM (X) : 3 ONE-PLACE (X.X) : 1.5 TWO-PLACE (X.XX) : 0.50 ANGLE : 1°		
THIRD ANGLE PROJECTION		
DO NOT SCALE DRAWING REFER TO ES0018 FOR FASTENER TIGHTENING GUIDELINES		
TITLE: WATER SYSTEM INSTL		
SHEET 1 OF 5	PART NO 178349	REV
REF:	1	10/27/2011

FOR
WATER
CALLOUTS
SEE DWG NO
116230-01-000



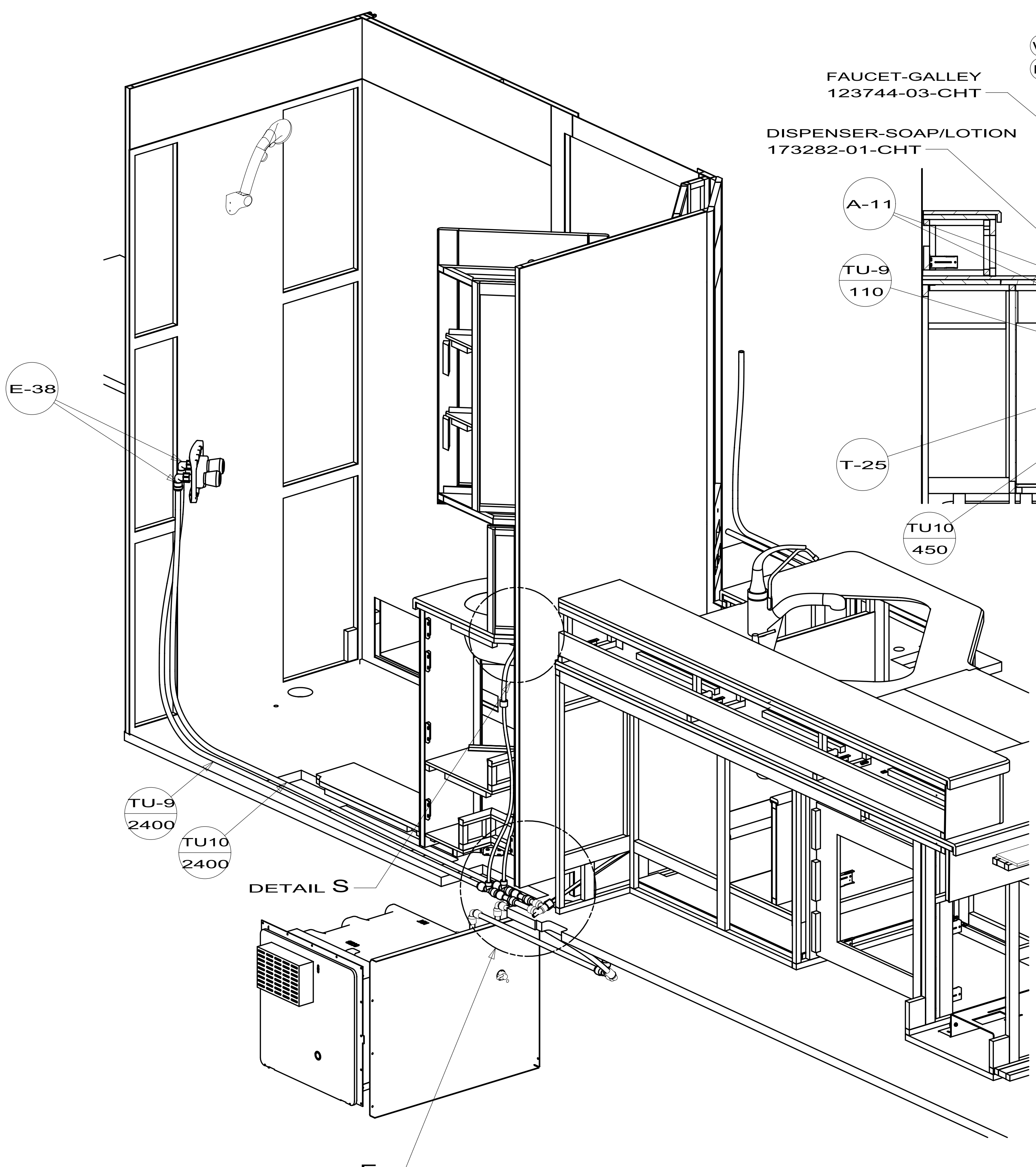
DETAIL C (SHOWN W/OUT CABINETS)

DETAIL B (SHOWN W/OUT CABINETS)

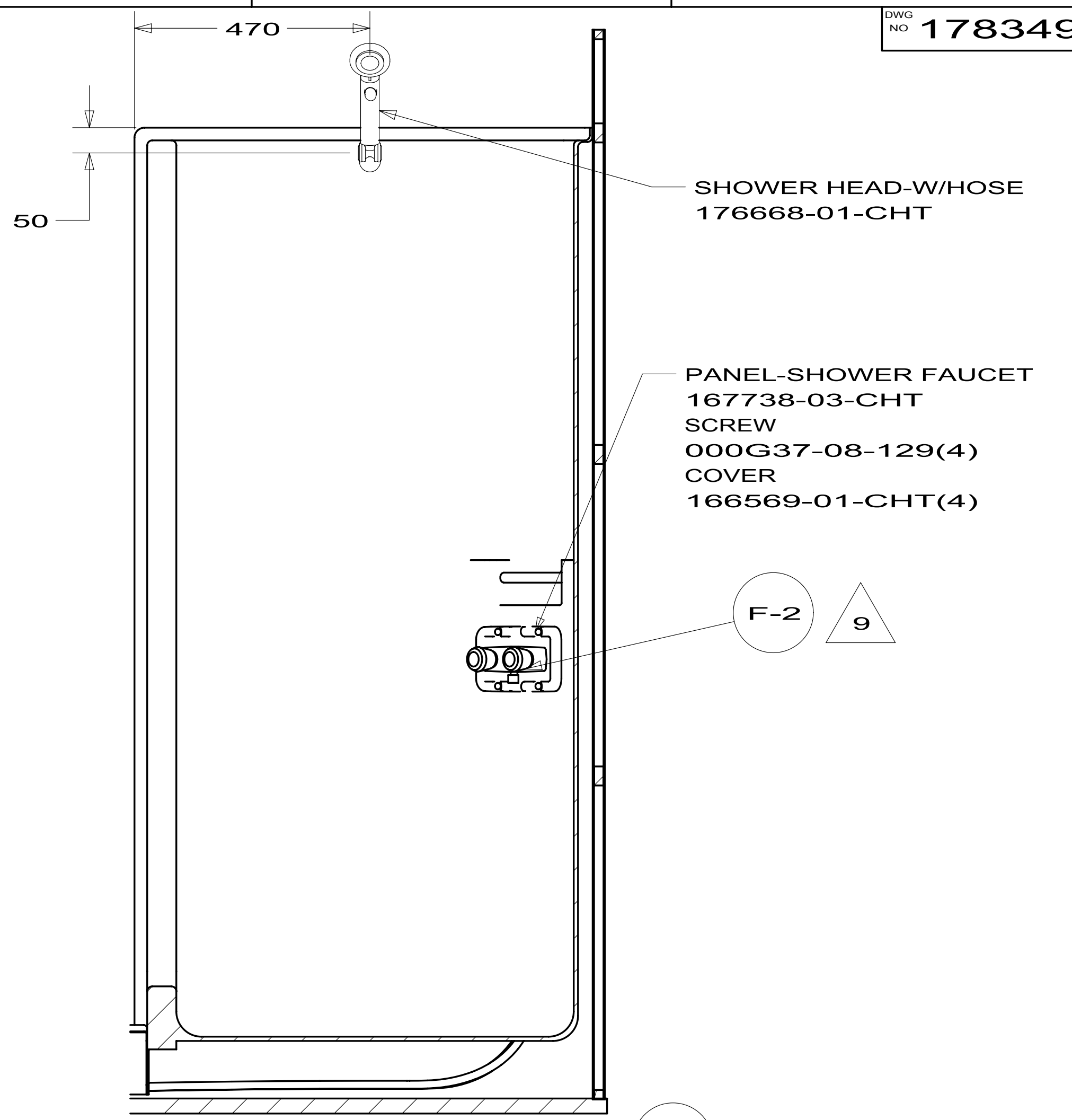
DETAIL H (SHOWN W/OUT CABINETS)

VIEW A

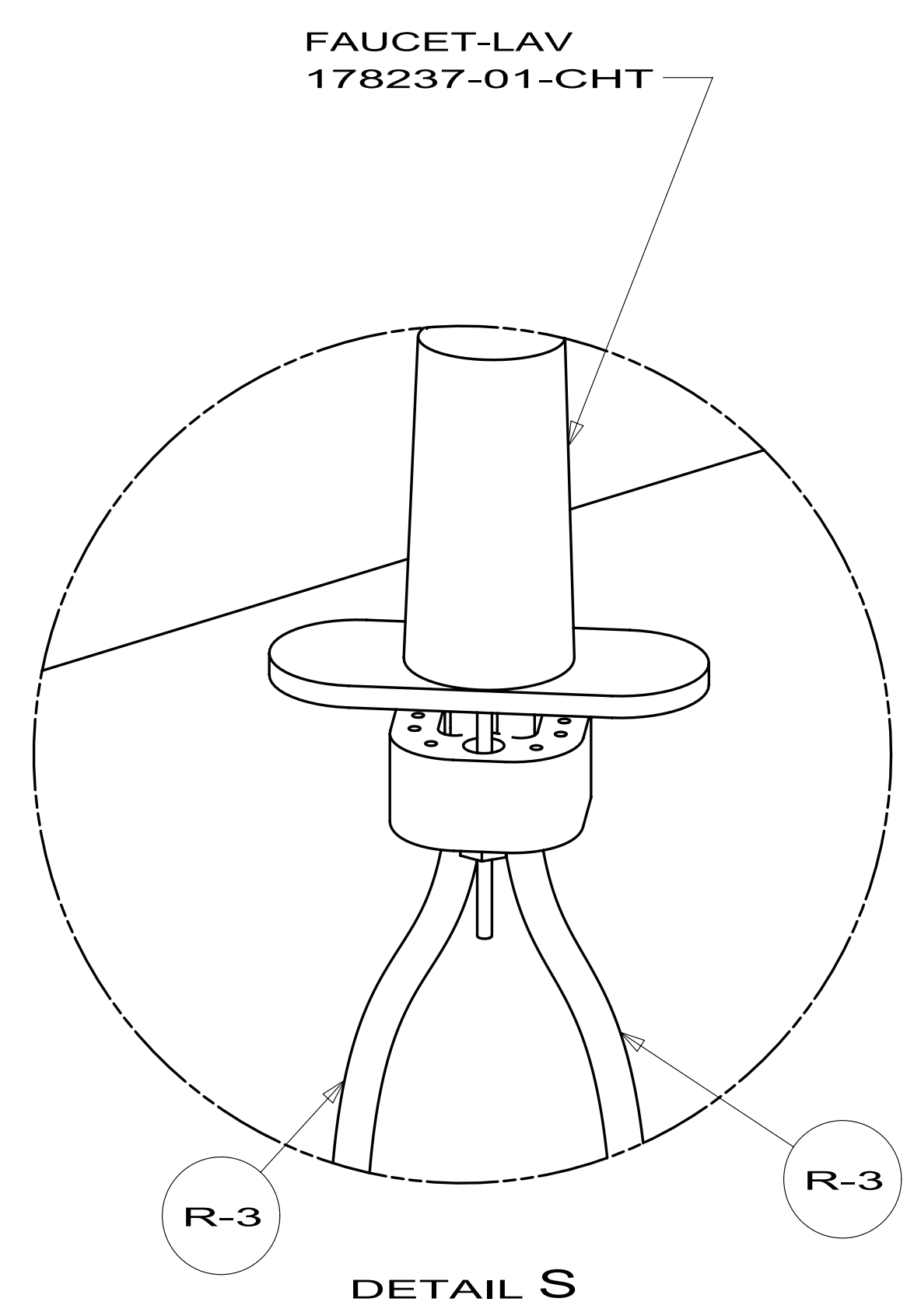
FIRST USED	12 P40U	
DO NOT SCALE DRAWING		
TITLE:	WATER SYSTEM INSTL	
SHEET 2	PART NO 178349	REV



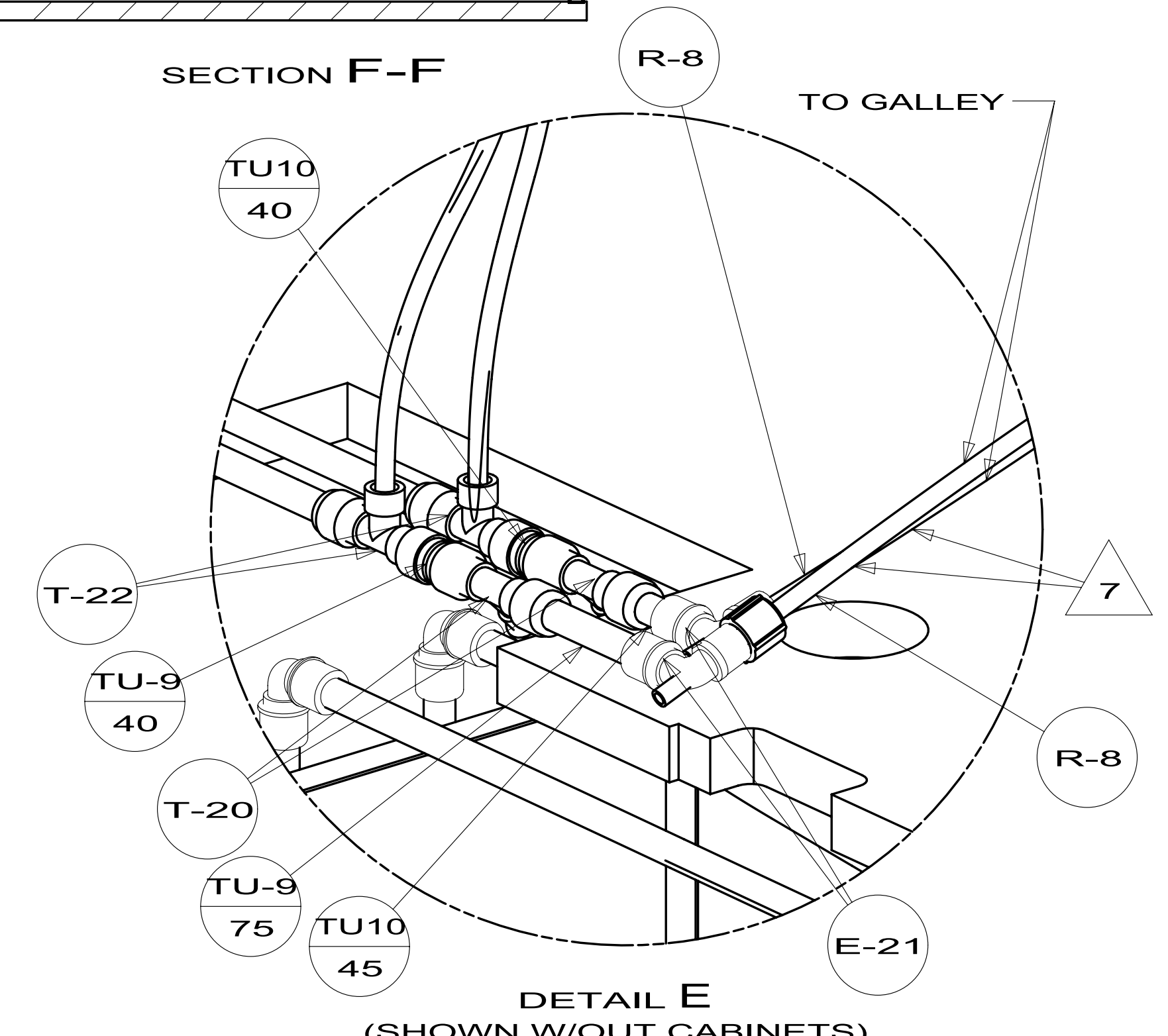
VIEW D



SECTION F-F



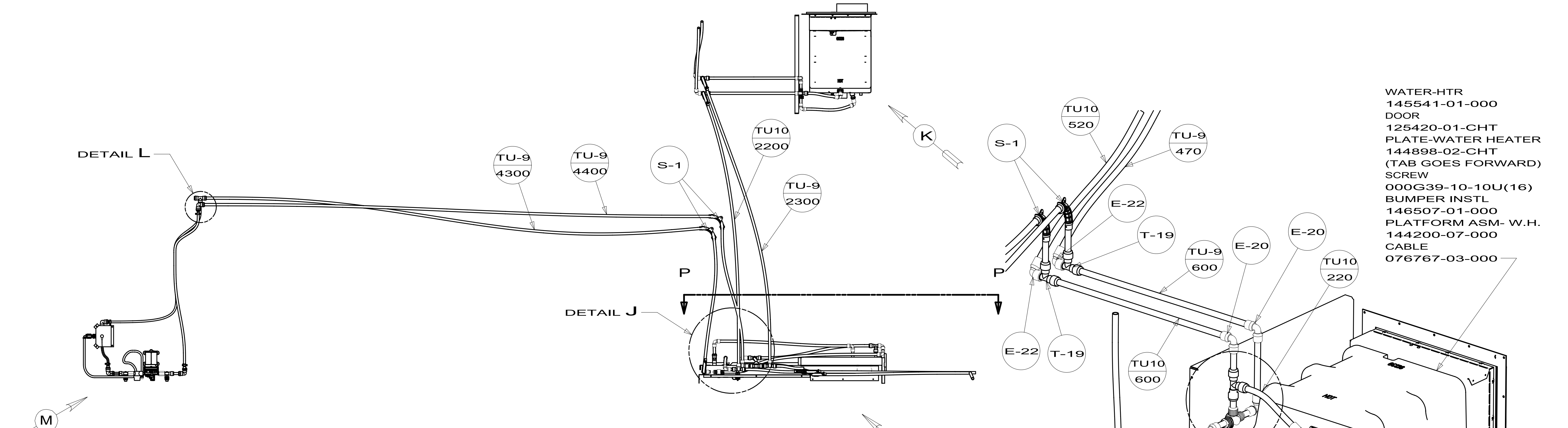
DETAIL S



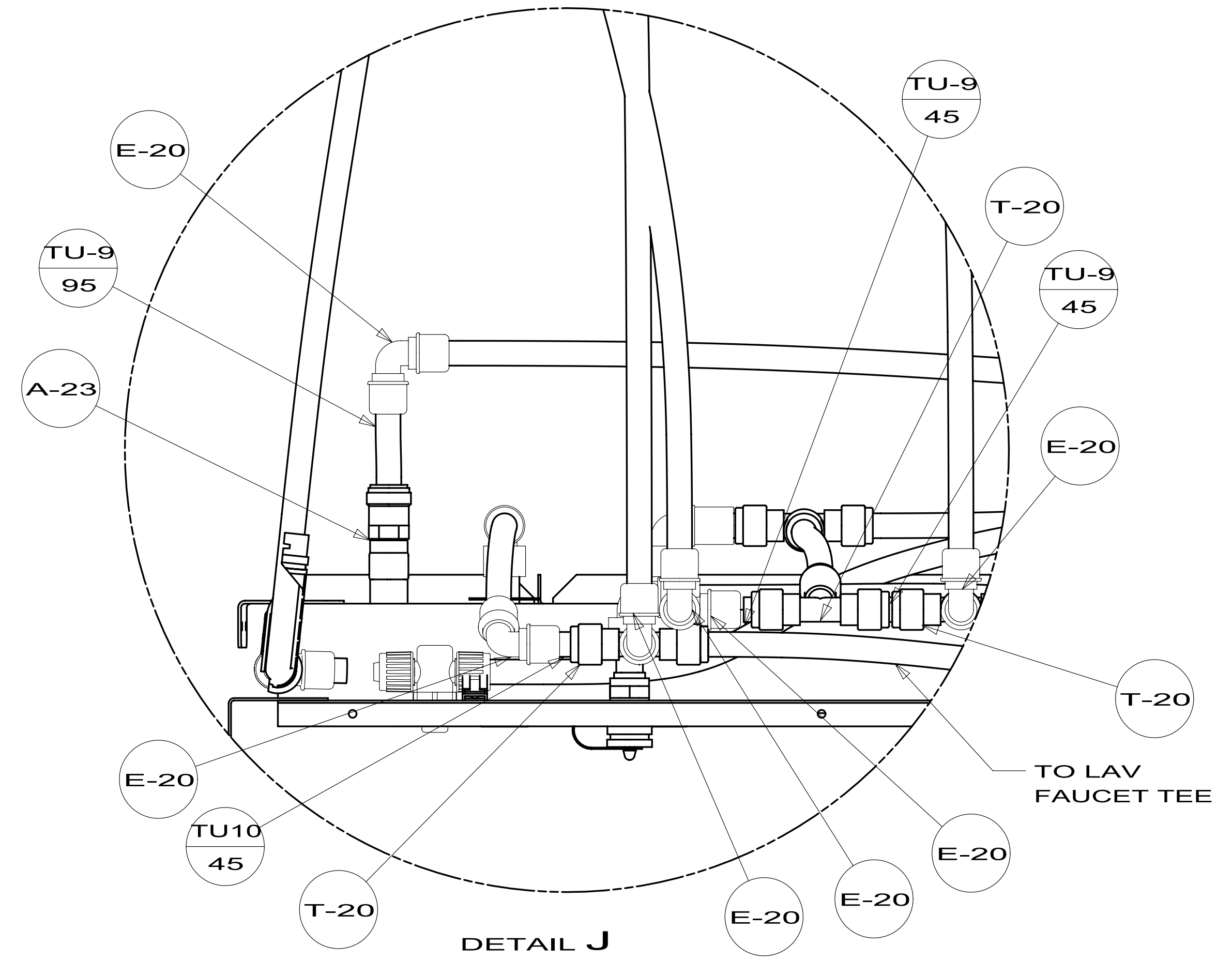
DETAIL E (SHOWN W/OUT CABINETS)

FIRST USED	12 P40U	
TITLE:	DO NOT SCALE DRAWING	
	WATER SYSTEM INSTL	
SHEET 3	PART NO 178349	REV

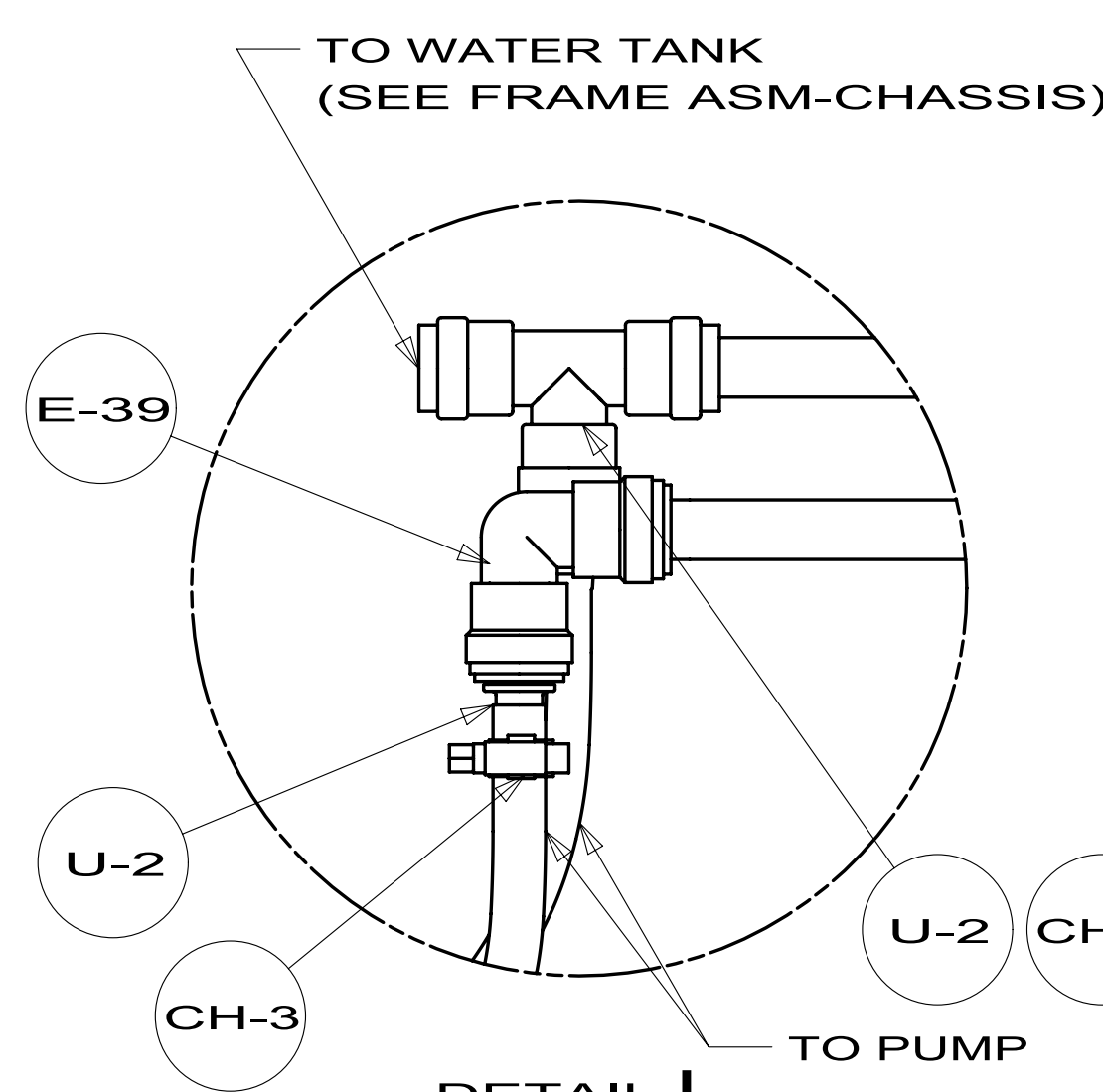
- WATER-HTR 145541-01-000
- DOOR 125420-01-CHT
- PLATE-WATER HEATER 144898-02-CHT
- (TAB GOES FORWARD) SCREW 000G39-10-10U(16)
- BUMPER INSTL 146507-01-000
- PLATFORM ASM- W.H. 144200-07-000
- CABLE 076767-03-000



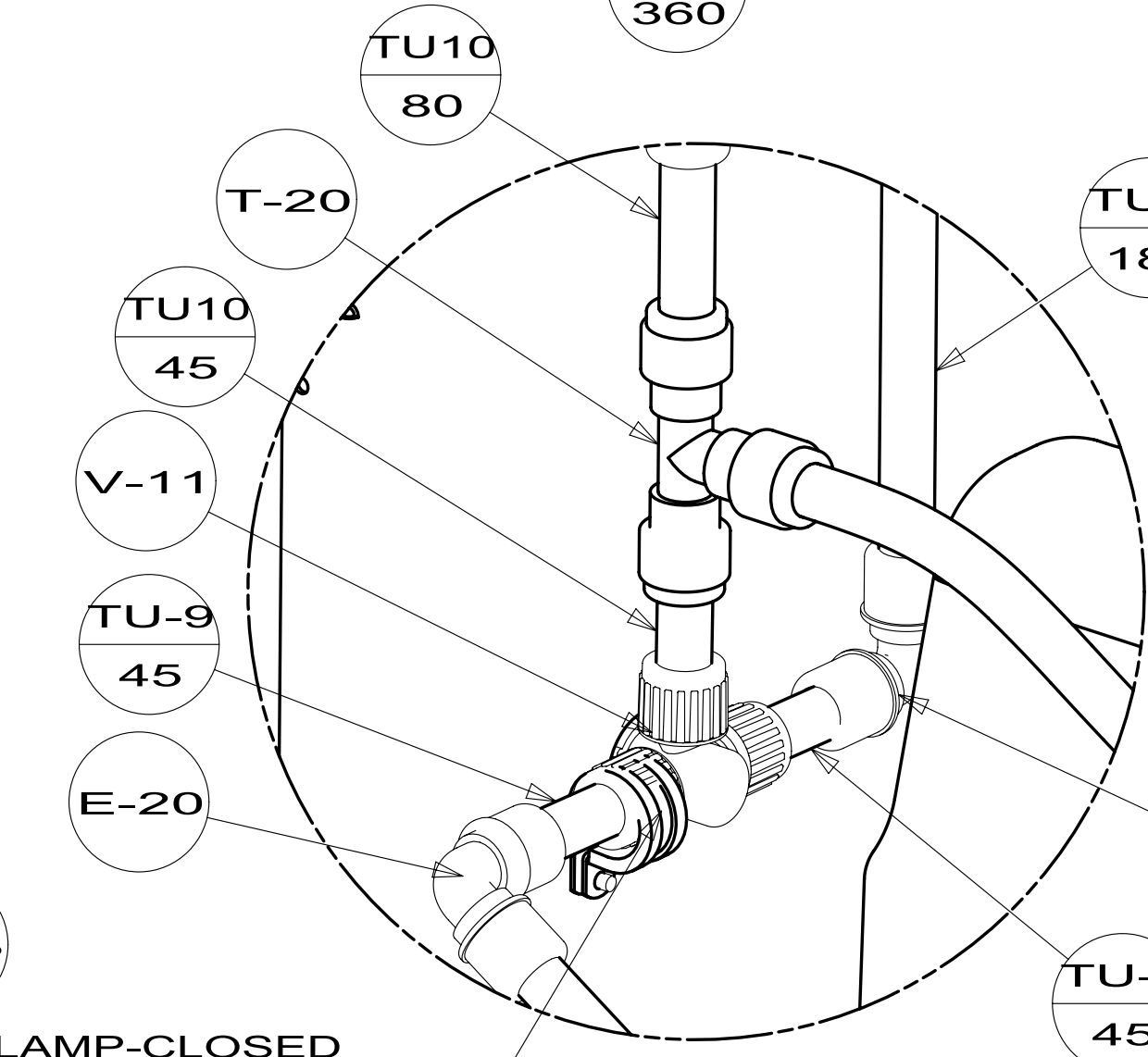
TOP VIEW SHOWING LINE UNDER FLOOR



DETAIL J



DETAIL L

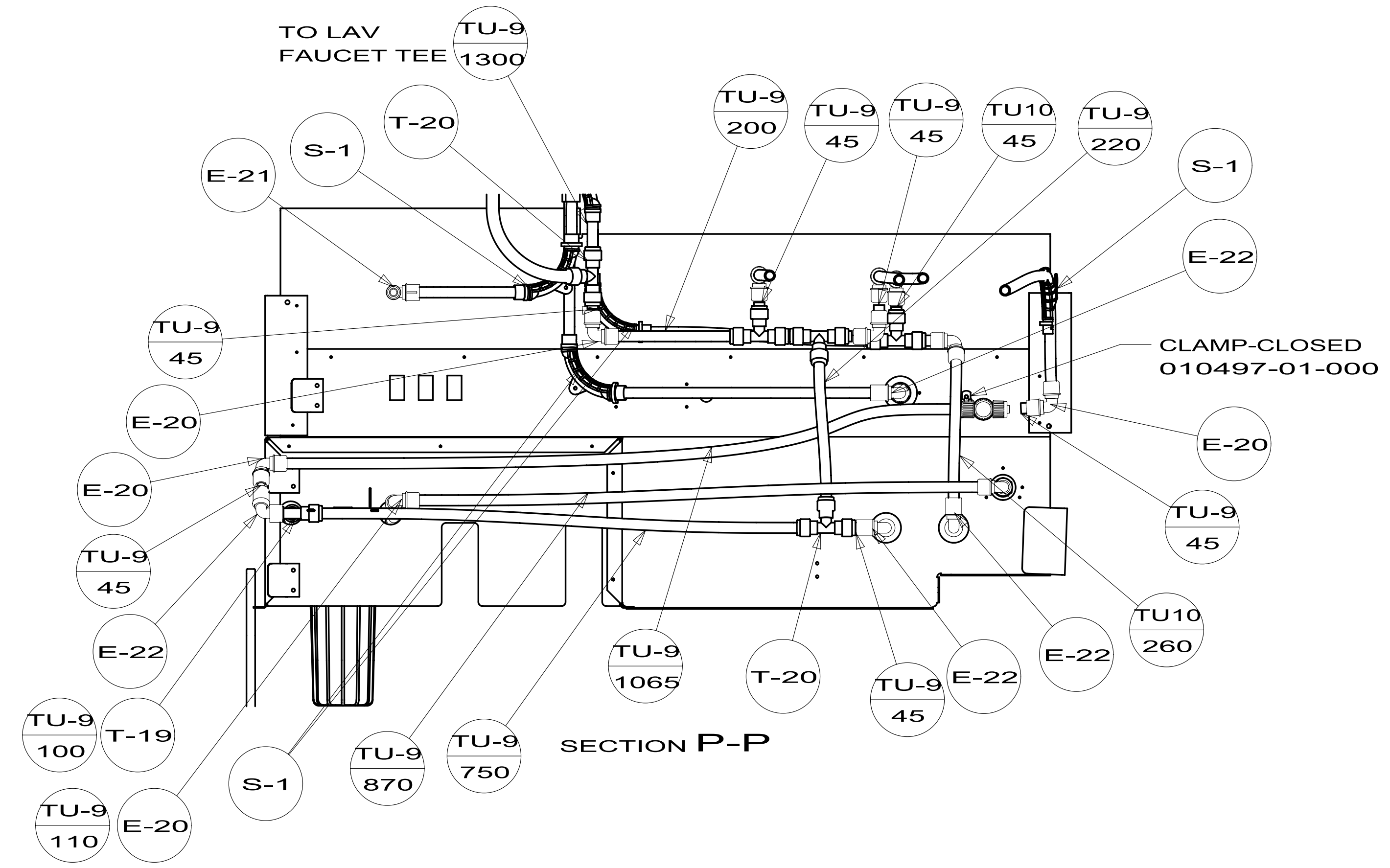
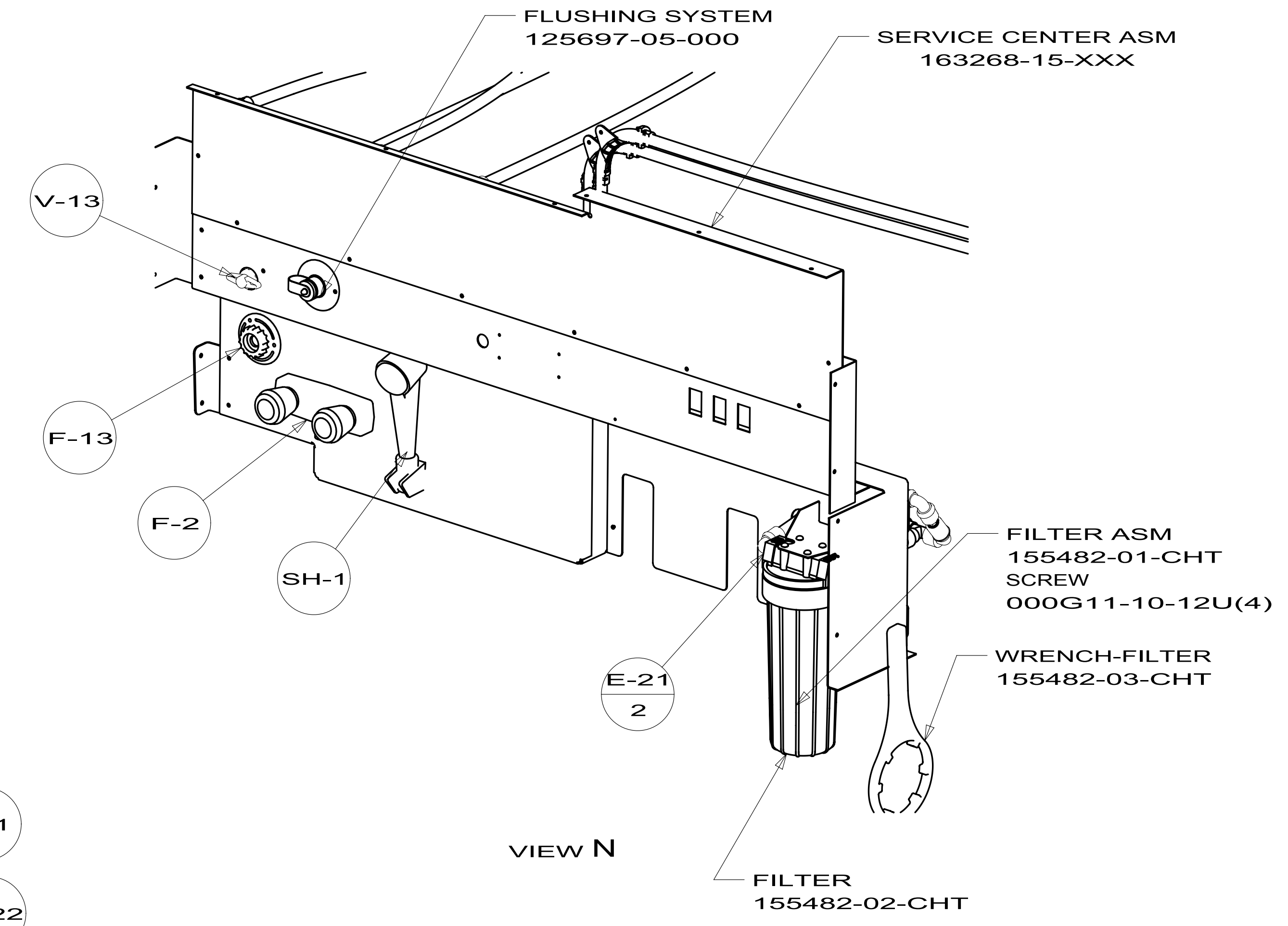
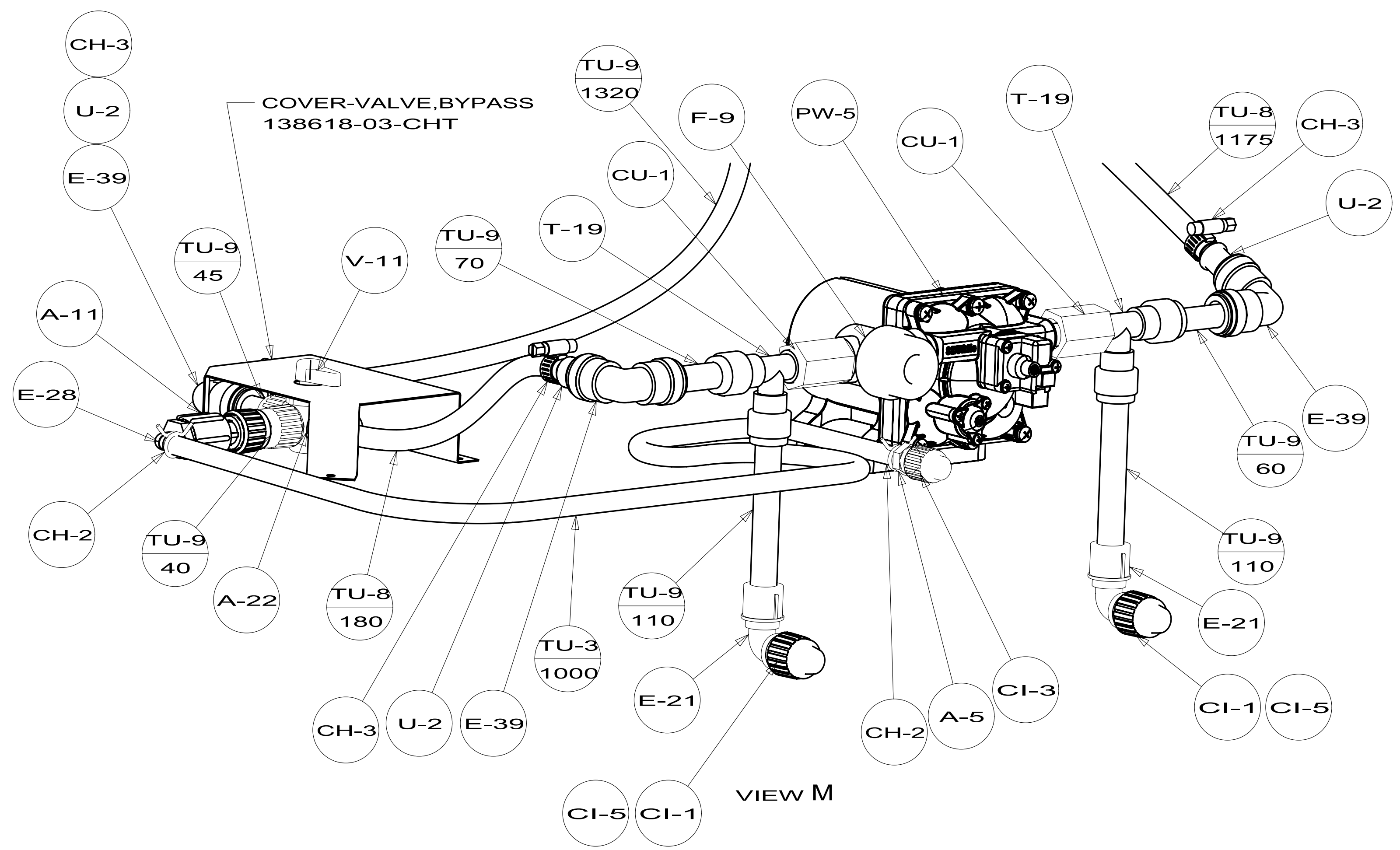


DETAIL R

PANEL-CLOSEOUT
172765-02-CHT
SCREW
000G39-10-12U(5)

VIEW K

FIRST USED	12 P40U	
DO NOT SCALE DRAWING		
TITLE: WATER SYSTEM INSTL		
SHEET 4	PART NO 178349	REV



FIRST USED	12 P40U	
TITLE:	DO NOT SCALE DRAWING	
	WATER SYSTEM INSTL	
SHEET 5	PART NO 178349	REV