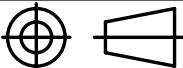


RELEASE		REV	DATE	DWG NO	178652
REV	ZONE	REVISION RECORD			DATE
					DFTR-ORIG

- 1D3 ENTERTAIN CENTR/EXT TV-DVD
- 299 ENTERTAIN CENTER EXT.W/O
- 21M WASHER/DRYER PREP
- 54E WASHER/DRYER\_COMBO

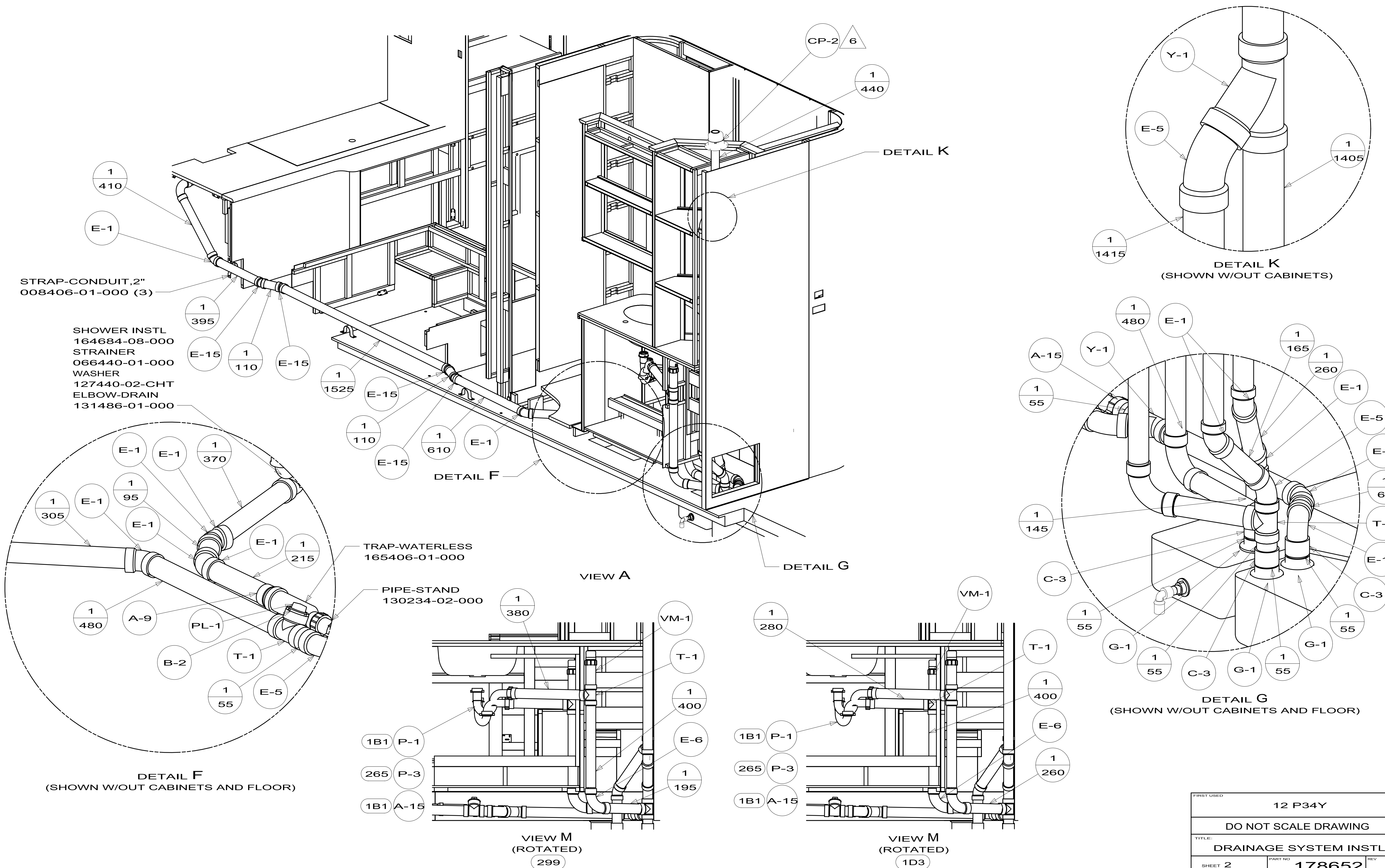
- 9 USE SMOOTH PLUMBERS PUTTY 167459-01-000 TO SEAL STRAINER (0.2 PER STRAINER).
8. SECURE DRAINAGE PIPES TO CABINET USING WIRE TIE 108046-02-000, AND SCREW 000G67-10-12B AT INTERVALS OF NOT MORE THAN 4 FEET APART.
- 7 SECURE VENT PIPE TO FLOOR WITH CLAMP 062401-02-000 (2),SCREW 000G67-10-12B (2), BRACKET 136878-01-CHT (2).
- 6 VENT PIPE MUST PROJECT 51 MIN AND 64 MAX ABOVE ROOF FOR PROPER FIT AND FUNCTION.  
ADD S-1 (116666-01-CHT SEAL-VENT PIPE) AROUND PIPE ON ROOF BEFORE VENT CAP IS INSTALLED.
5. SEAL AROUND SHOWER WITH SILICONE.
4. DO NOT ATTACH ANY OTHER SYSTEM TO PIPE-FLEX 126426-01.
3. ALL PIPE AND FITTINGS TO BE ASSEMBLED WITH SOLVENT 004020-01-000 (USA), 004020-02-000 (CAN)
2. SLOPE OF TRAP ARM MUST BE 6 PER 305 mm.
1. SLOPE OF HORIZONTAL PIPING TO BE MINIMUM OF 3 PER 305 mm.

NOTES:

<div>WINNEBAGO® INDUSTRIES</div>		COPYRIGHT 2011 WINNEBAGO INDUSTRIES, INC.	
DFT#		ORIG. DATE	
CHGR		ALL DIMENSIONS ARE IN MILLIMETERS	
P.E.			
M.E.		FIRST USED	
DSNR		12 P34Y	
UNSPECIFIED TOLERANCES ARE:		MATERIAL:	
WHOLE DIM (X)        ±    3			
ONE-PLACE (X.X)     ±    1.5			
TWO-PLACE (X.XX)   ±   0.50			
ANGLE                    ±    1°			
THIRD ANGLE PROJECTION			
DO NOT SCALE DRAWING			
TITLE:		REFER TO ES0018 FOR FASTENER TIGHTENING GUIDELINES	
DRAINAGE SYSTEM INSTL			
SHEET 1 OF 4		PART NO	REV
		178652	

X-X

FOR  
DRAINAGE  
CALLOUTS  
SEE DWG NO  
116229-01-000



FIRST USED			
12 P34Y			
DO NOT SCALE DRAWING			
TITLE:			
DRAINAGE SYSTEM INSTL			
SHEET 2		PART NO	REV
		178652	

TOILET-STYLE LITE, W/SPRAYER  
160815-01-CHT  
SCREW  
087721-01-000 (6)

TOILET  
SPRAYER  
(REF)

DETAIL E

SINK-SST, DBL  
173783-01-CHT  
STRAINER  
092303-01-000 (2)  
SEAL  
(A/R)  
WASHER  
127440-02-CHT (2)  
ANGLE-W/SLOT  
140002-01-CHT (10)

PIPE-STAND  
130234-01-000 (21M) 54E  
PLUG-PLASTIC  
061420-12-000 (21M)

STRAP-CONUIT, 2"  
008406-01-000(2)

DETAIL D

VIEW C

VIEW B

DETAIL H

STRAP-CONDUIT, 2"  
008406-01-000 (3)

ELBOW  
136111-01-000

FITTING-BULKHEAD  
136656-01-CHT

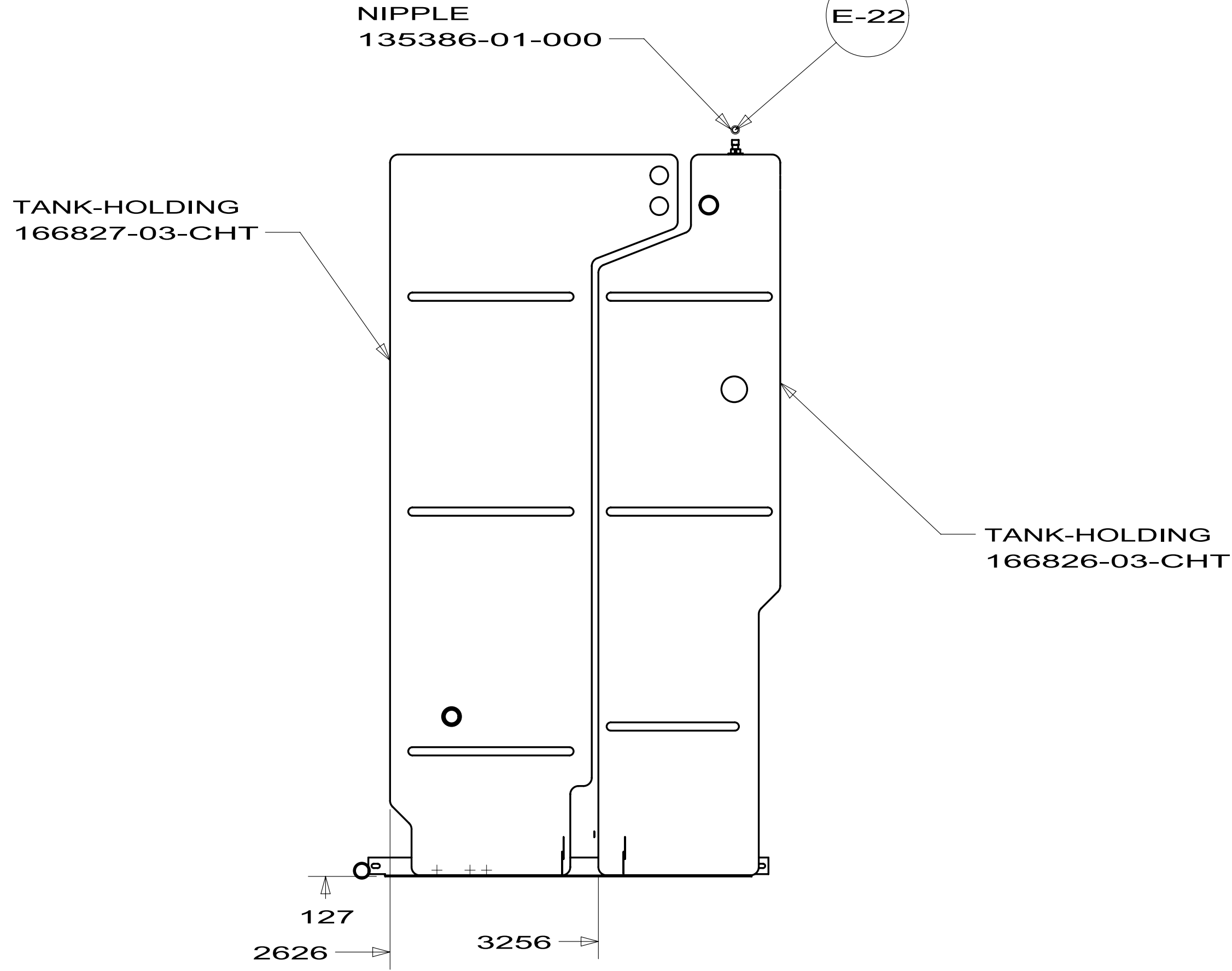
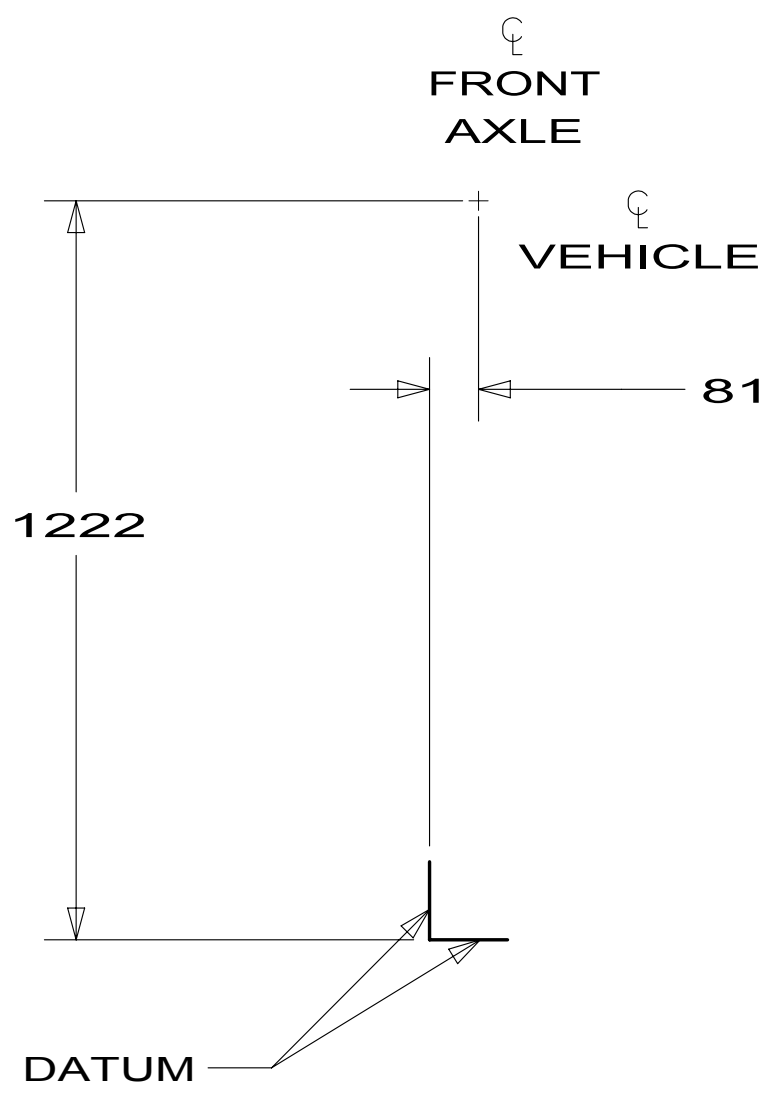
ELBOW  
136111-01-000

DETAIL D  
(SHOWN W/OUT CABINETS AND FLOOR)

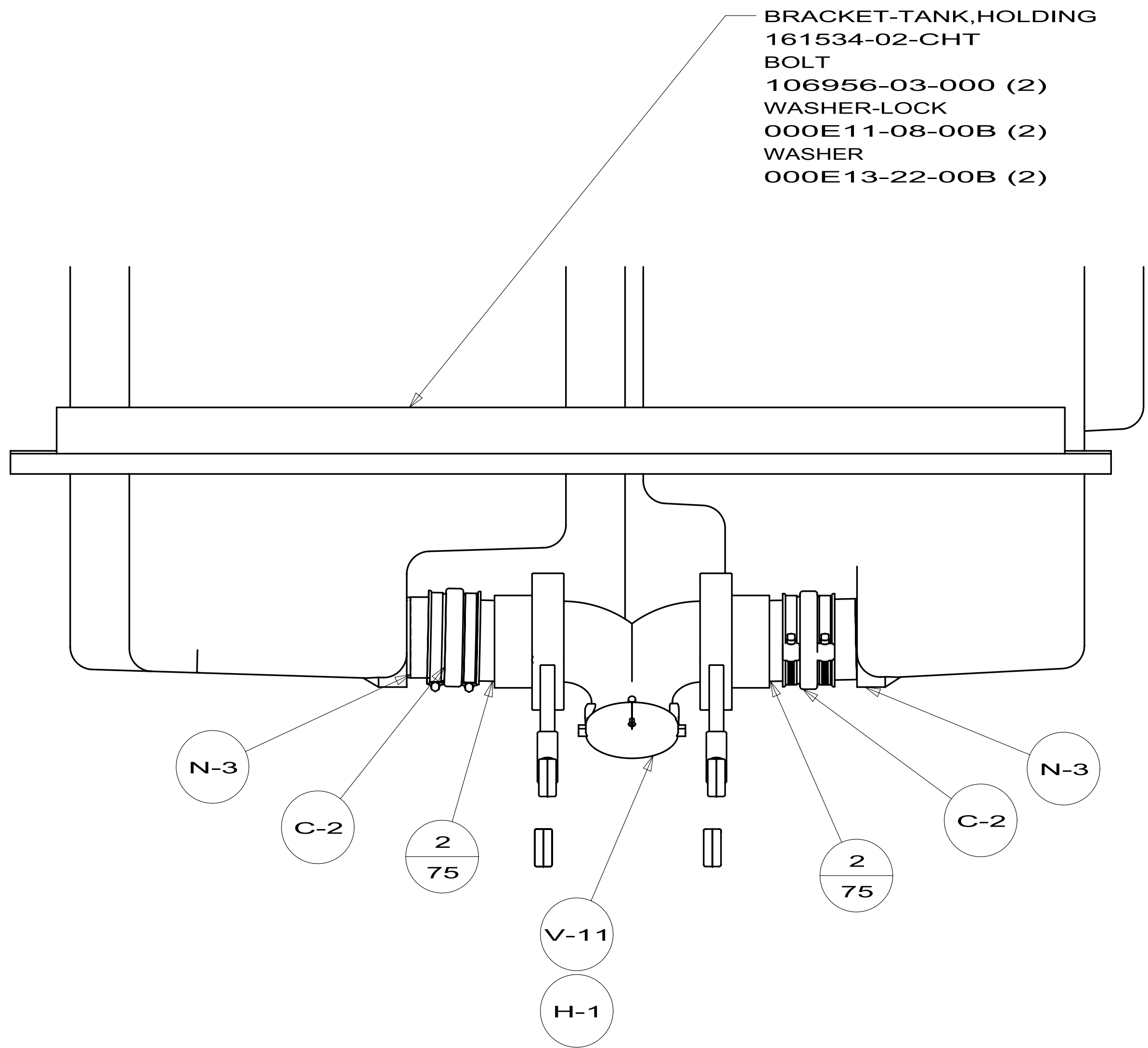
DETAIL E  
(SHOWN W/OUT CABINETS AND FLOOR)

DETAIL H  
(SHOWN W/OUT CABINETS)

FIRST USED		12 P34Y	
DO NOT SCALE DRAWING			
TITLE: R) DRAINAGE SYSTEM INSTL			
SHEET 3	PART NO	178652	REV

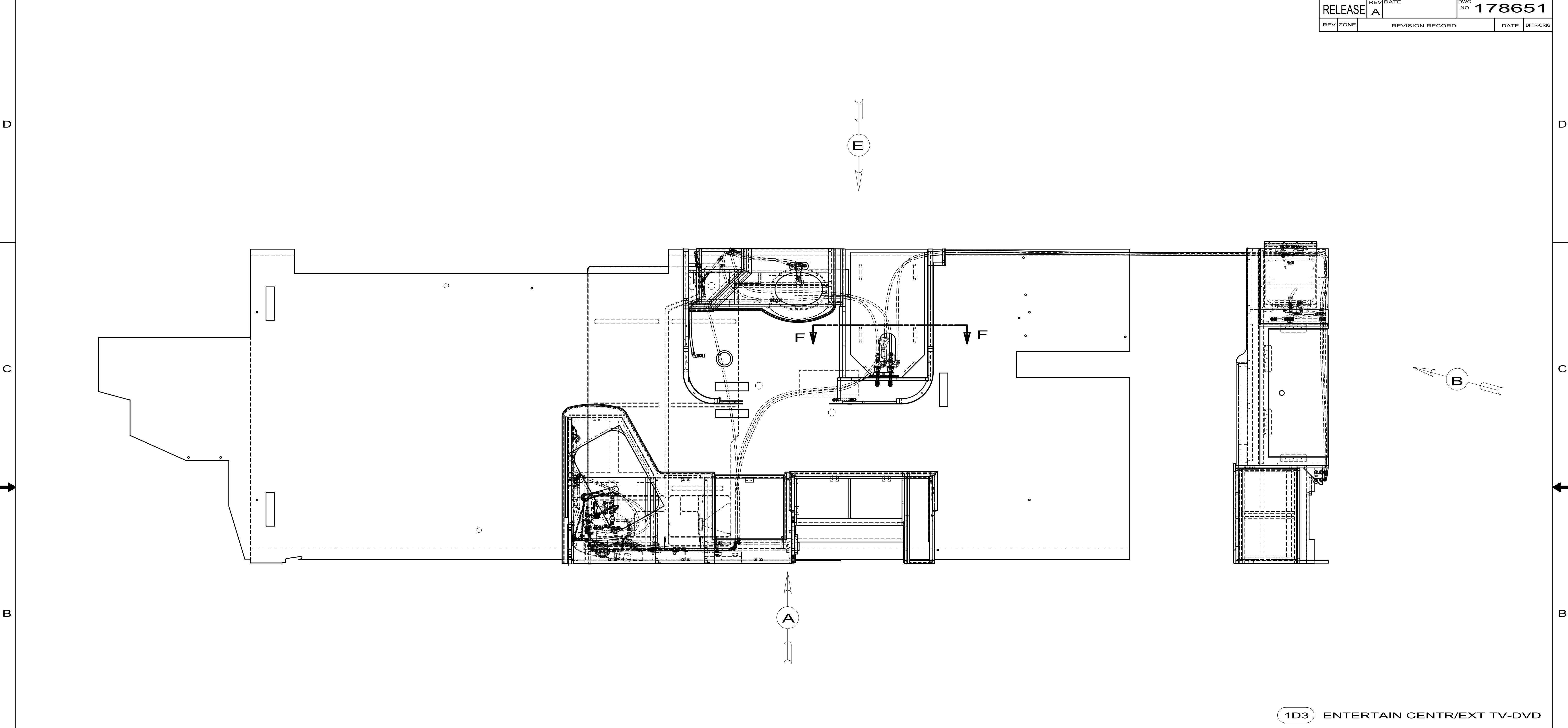


TOP VIEW SHOWING ONLY DRAINS AND TANKS



VIEW J

FIRST USED			12 P34Y
DO NOT SCALE DRAWING			
TITLE:			DRAINAGE SYSTEM INSTL
SHEET 4	PART NO	178652	REV



- 7 ADD PIPE WRAP (LADDER SCRAP 110157-02-000) INSULATION.
- 6 ADD TEFLON TAPE 010405-03-000.
- 5 ADD TEFLON TAPE 010405-02-000.
- 4 ADD TEFLON TAPE 010405-01-000.
3. ALL TUBING TO BE SECURED AT 1200 INTERVALS MAXIMUM WITH CLAMP 010495-01-000 AND SCREW 000G67-10-12B OR EQUIVALENT.
2. TUBING TO BE INSTALLED WITH SUFFICIENT SLOPE TO PROVIDE DRAINAGE TO NEAREST VALVE.
1. PLASTIC FITTINGS TO BE SEALED WITH SEALANT 084456-01-000.

NOTES:

1D3 ENTERTAIN CENTR/EXT TV-DVD

WINNEBAGO  
INDUSTRIES

COPYRIGHT 2011  
WINNEBAGO  
INDUSTRIES, INC.

DFTD	ORIG. DATE
CHRR	ALL DIMENSIONS ARE IN MILLIMETERS
P.E.	
M.E.	FIRST USED
DSNR	12 P34Y
UNSPECIFIED TOLERANCES ARE:	
WHOLE DIM (X)	: 3
ONE-PLACE (X.X)	: 1.5
TWO-PLACE (X.XX)	: 0.50
ANGLE	: 1°
THIRD ANGLE PROJECTION	
DO NOT SCALE DRAWING	REFER TO ES0018 FOR FASTENER TIGHTENING GUIDELINES
TITLE: WATER SYSTEM INSTL	
SHEET 1 OF 4	PART NO 178651

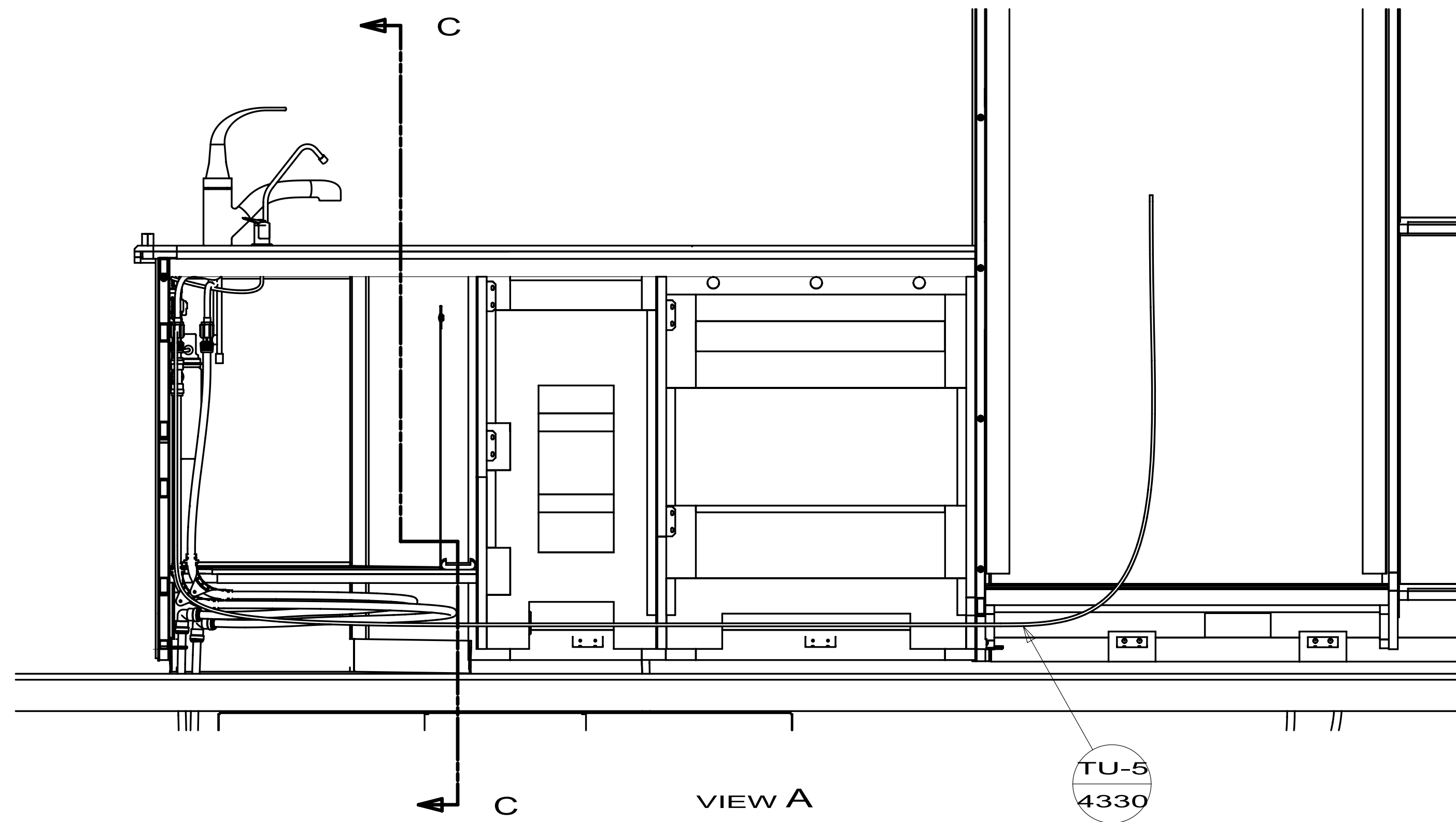
REF: 1

6/10/2011

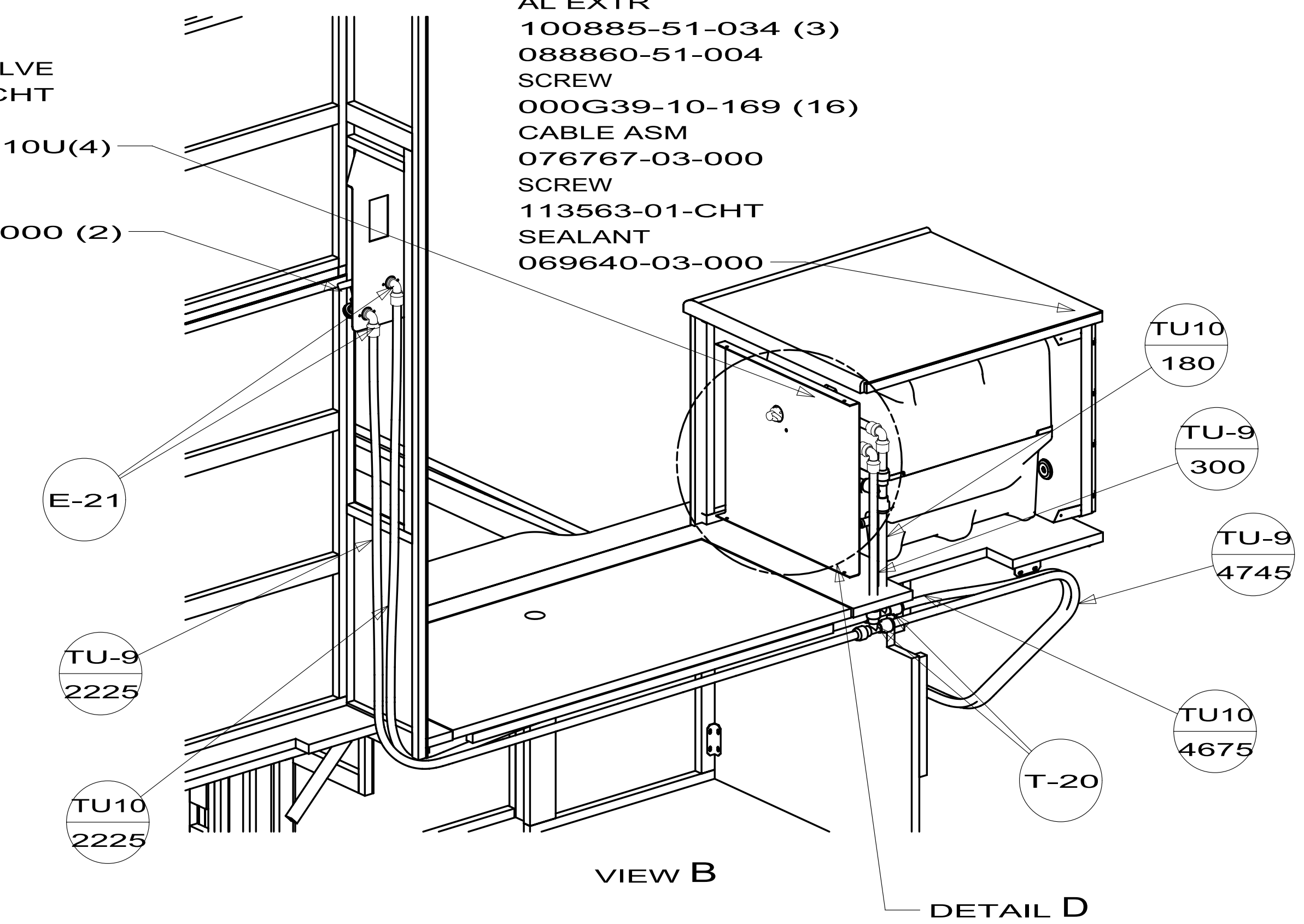
X-X

FOR  
WATER  
CALLOUTS  
SEE DWG NO  
116230-01-000

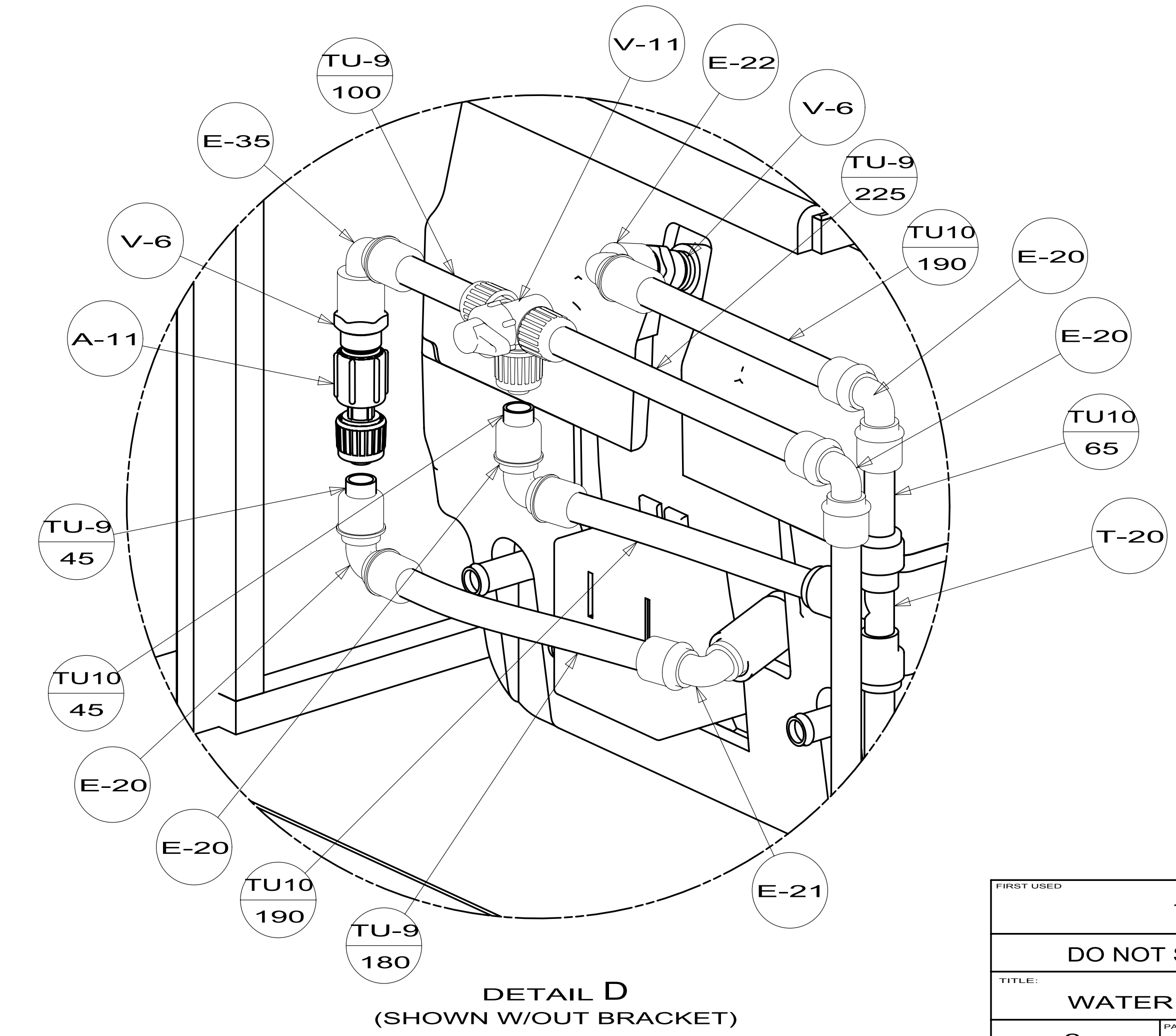
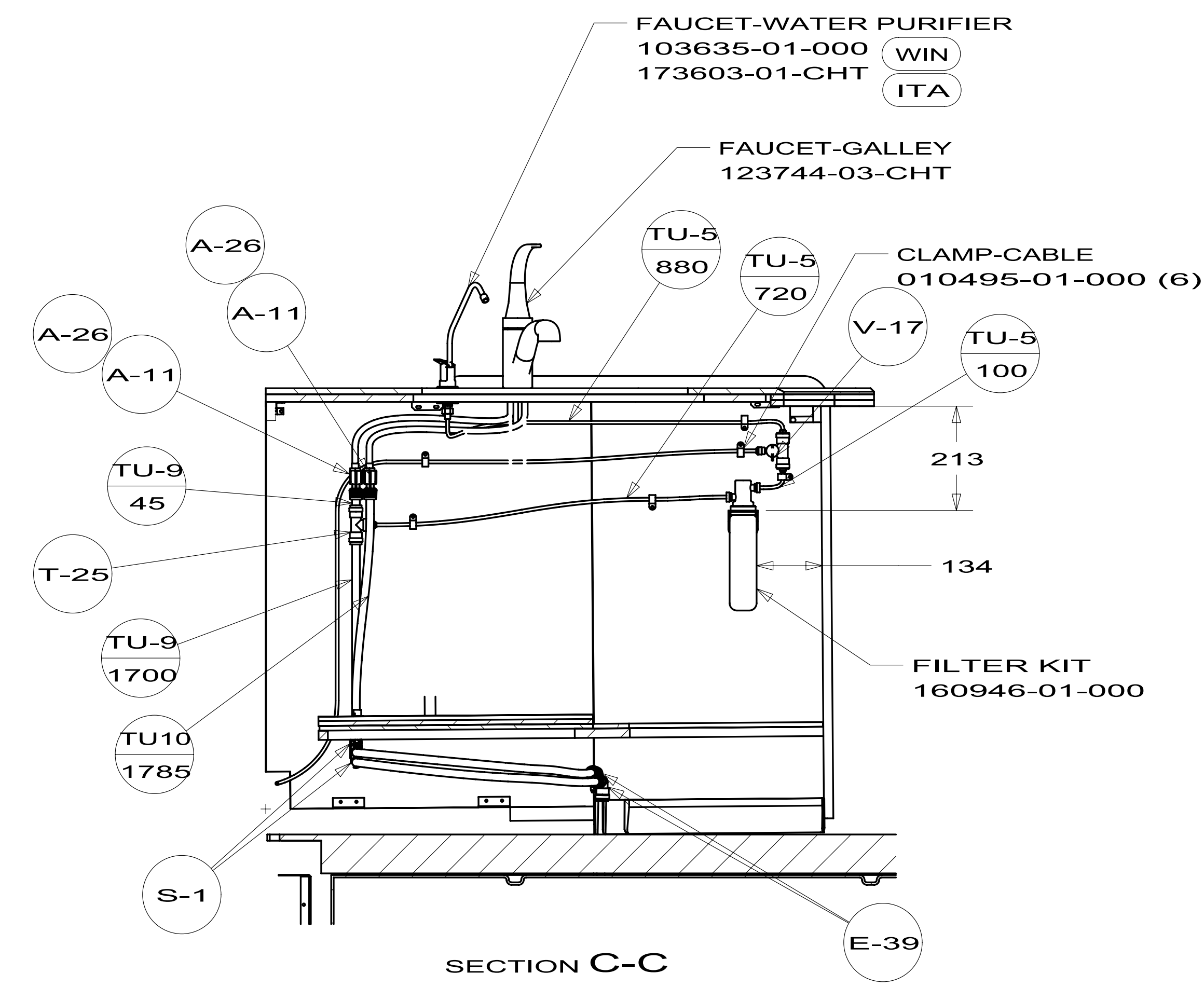




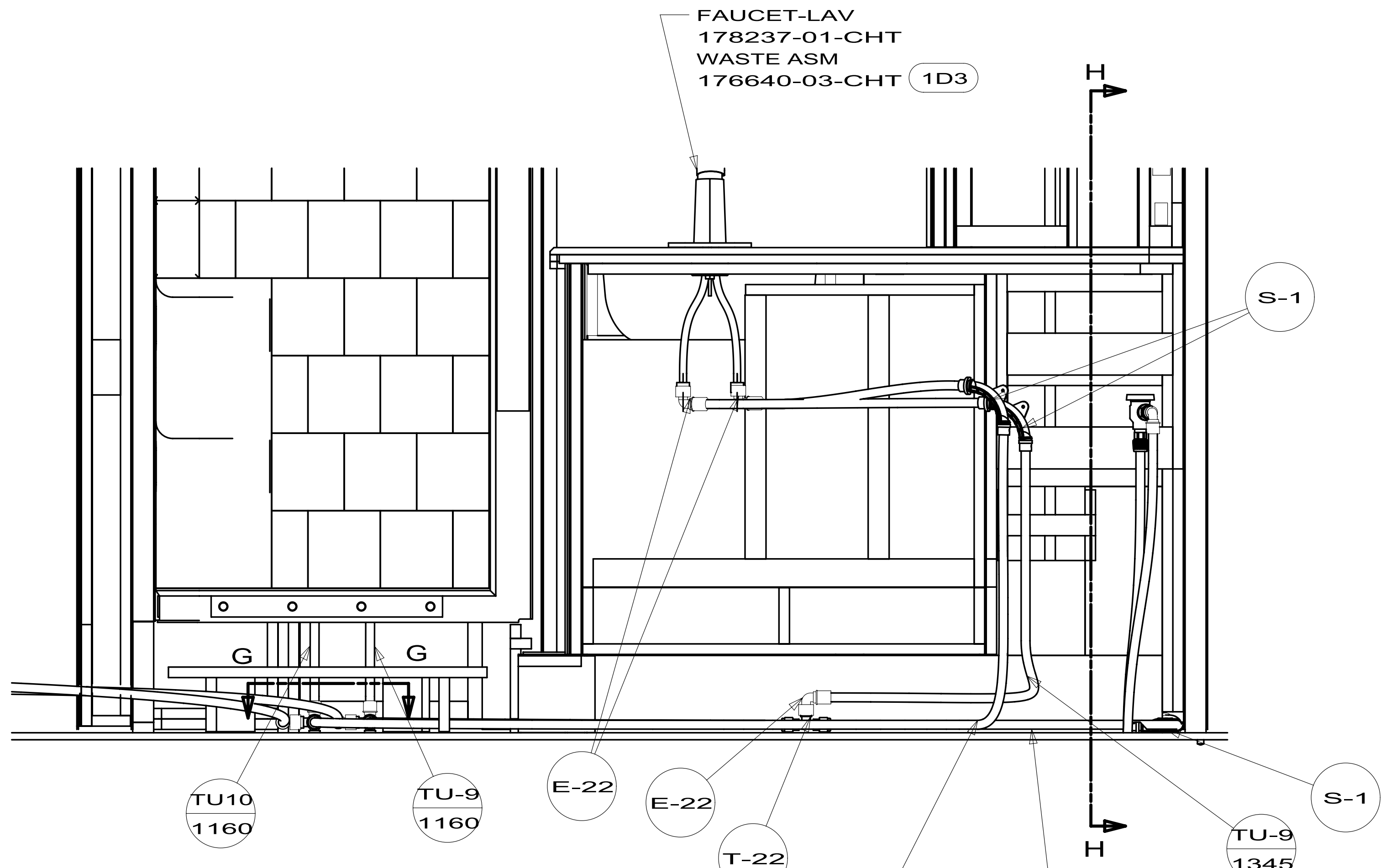
- BRACKET-VALVE  
151245-04-CHT
- SCREW  
000G67-10-10U(4)
- FAUCET  
098419-01-000 (2)



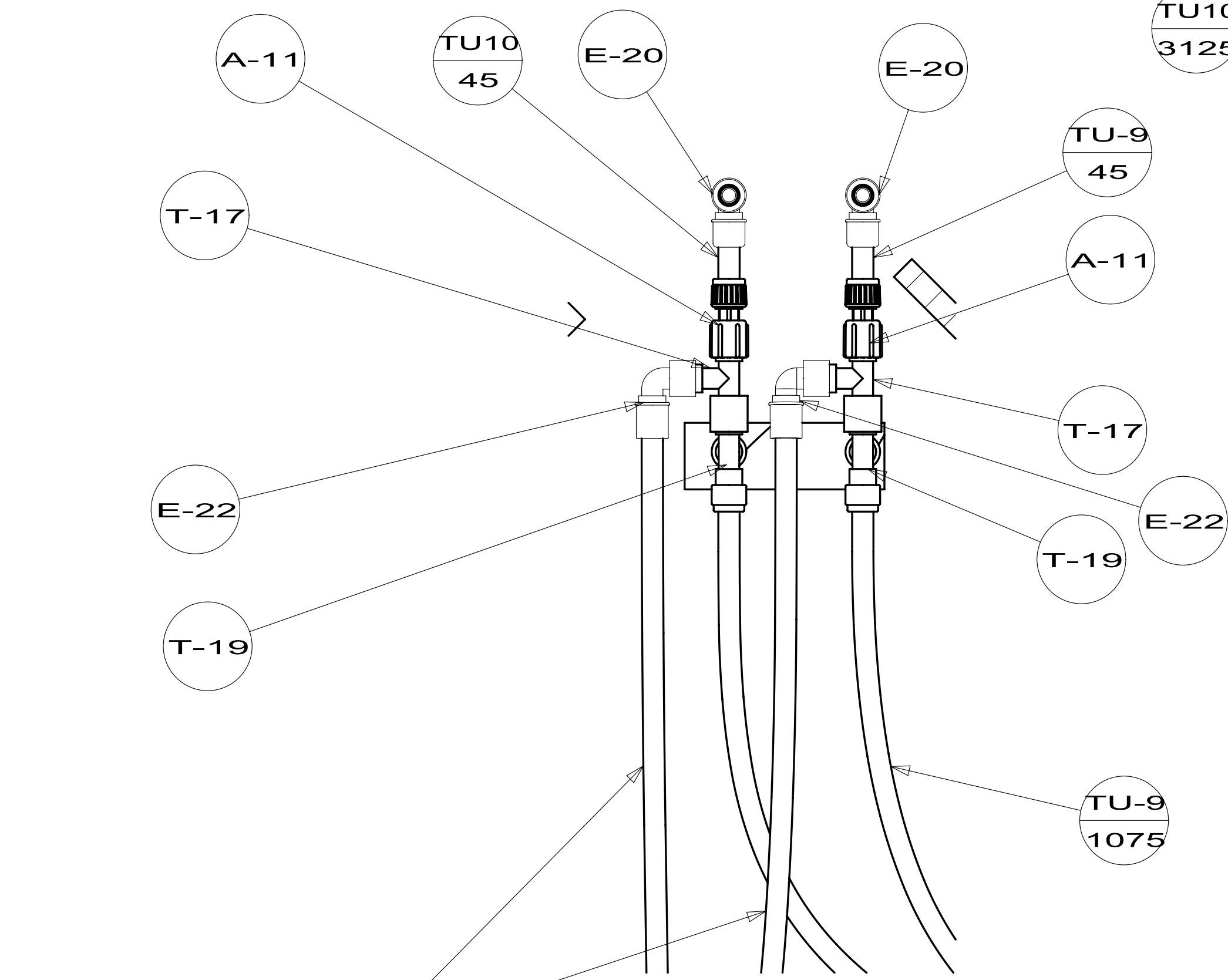
- WATER HEATER  
145541-01-000
- DOOR  
125420-05-CHT
- AL EXTR  
100885-51-034 (3)
- 088860-51-004
- SCREW  
000G39-10-169 (16)
- CABLE ASM  
076767-03-000
- SCREW  
113563-01-CHT
- SEALANT  
069640-03-000



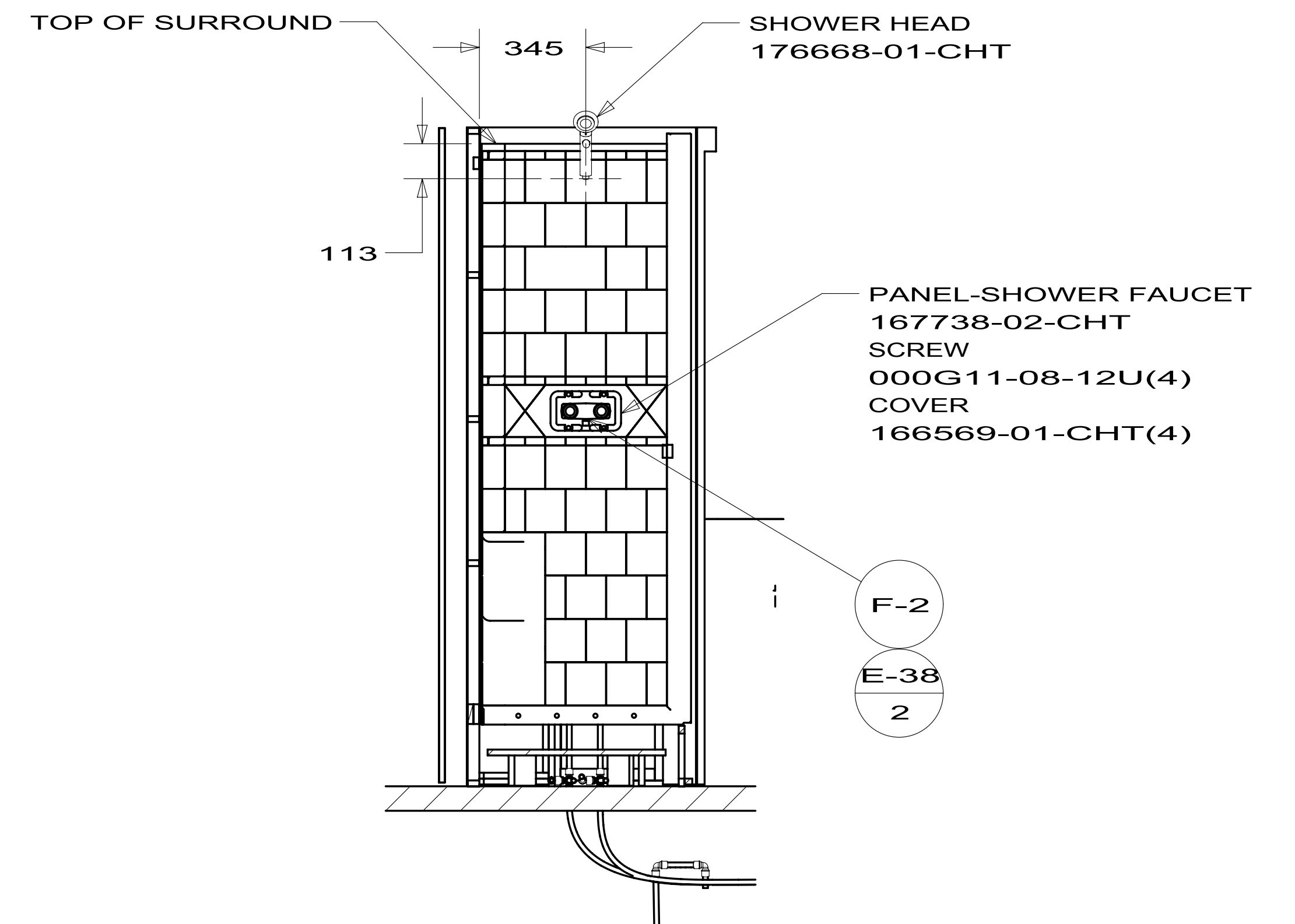
FIRST USED		12 P34Y	
DO NOT SCALE DRAWING			
TITLE: WATER SYSTEM INSTL			
SHEET 2	PART NO	178651	REV



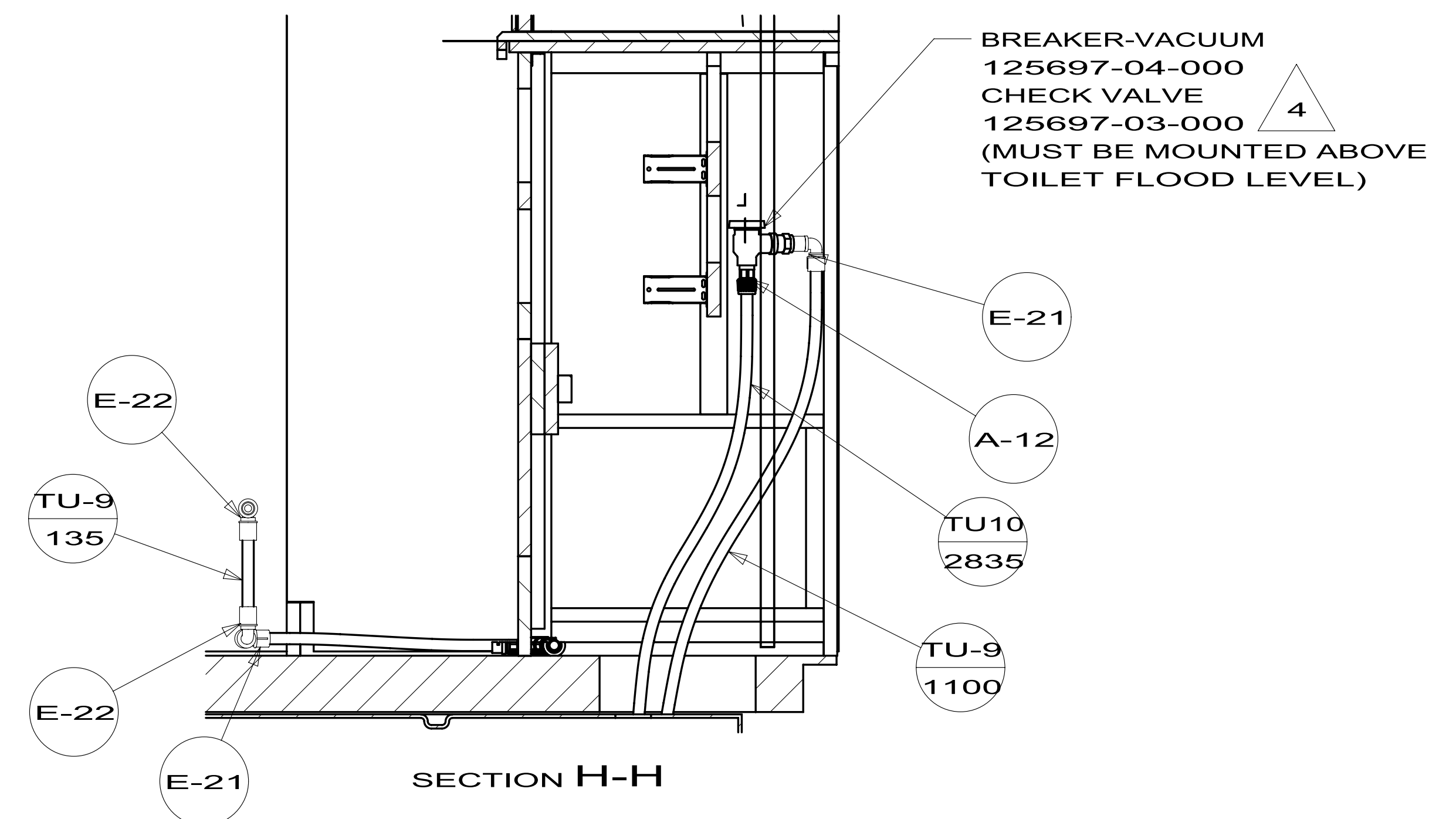
VIEW E  
(ROTATED)



SECTION G-G

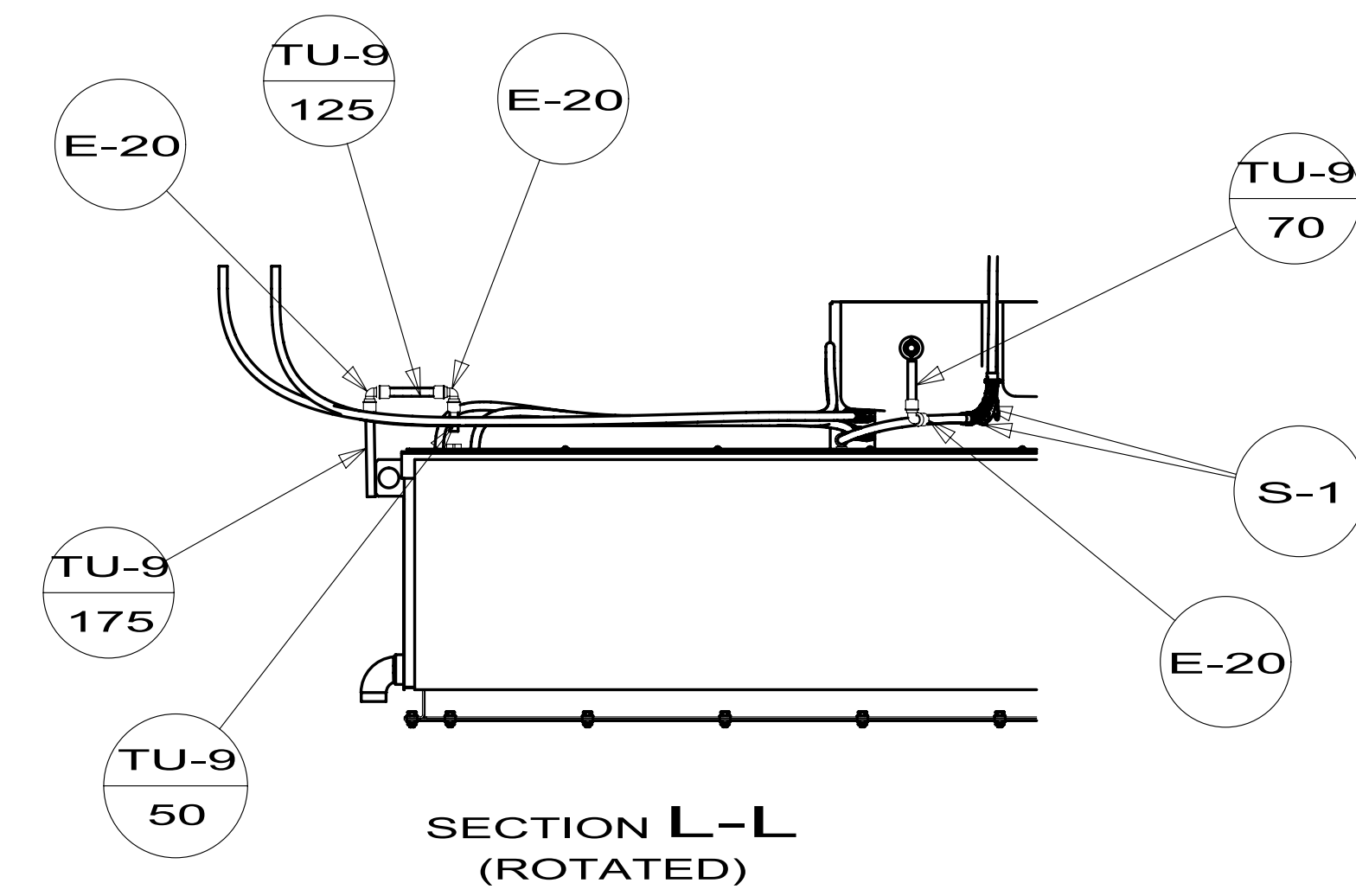
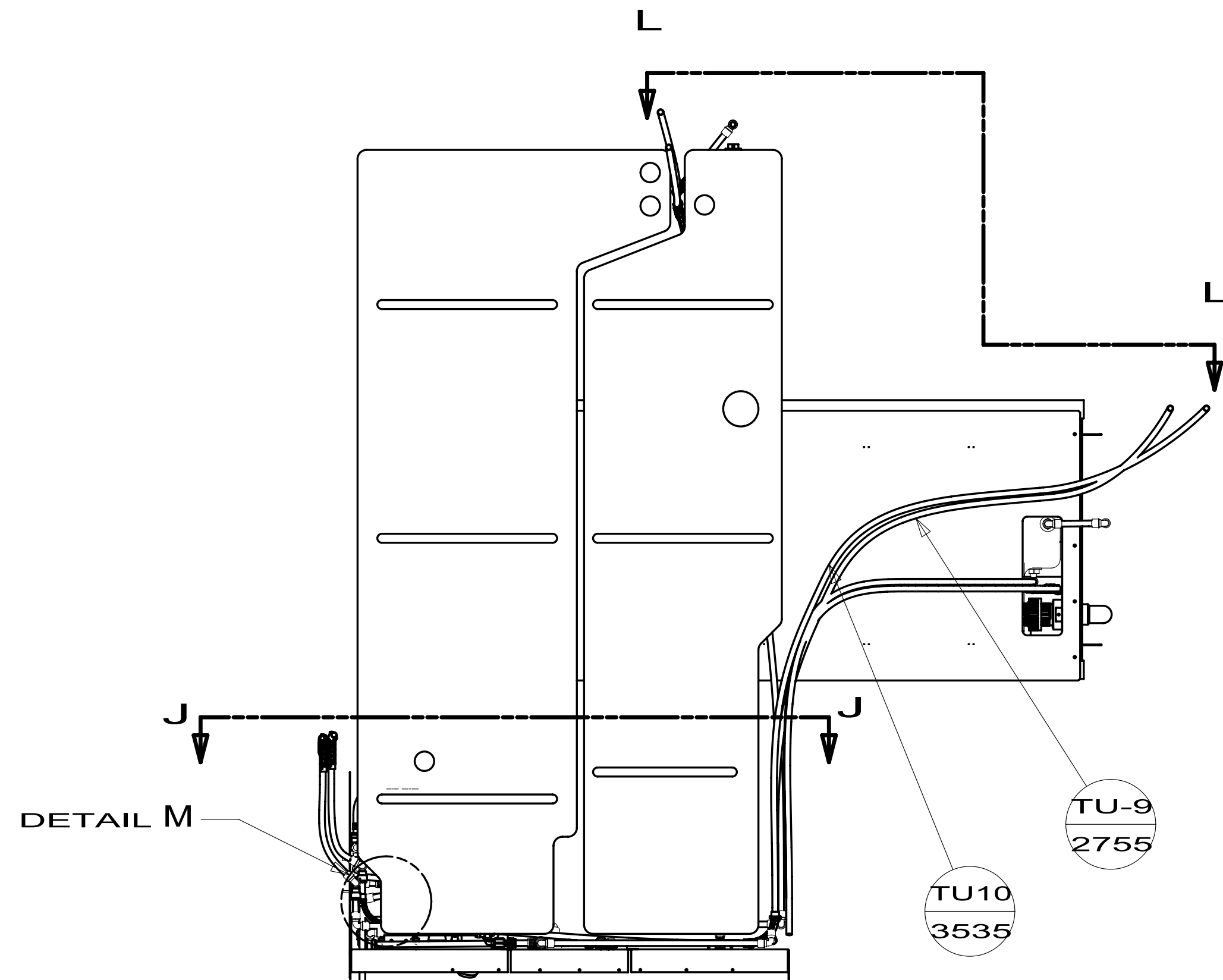


SECTION F-F  
(ROTATED)

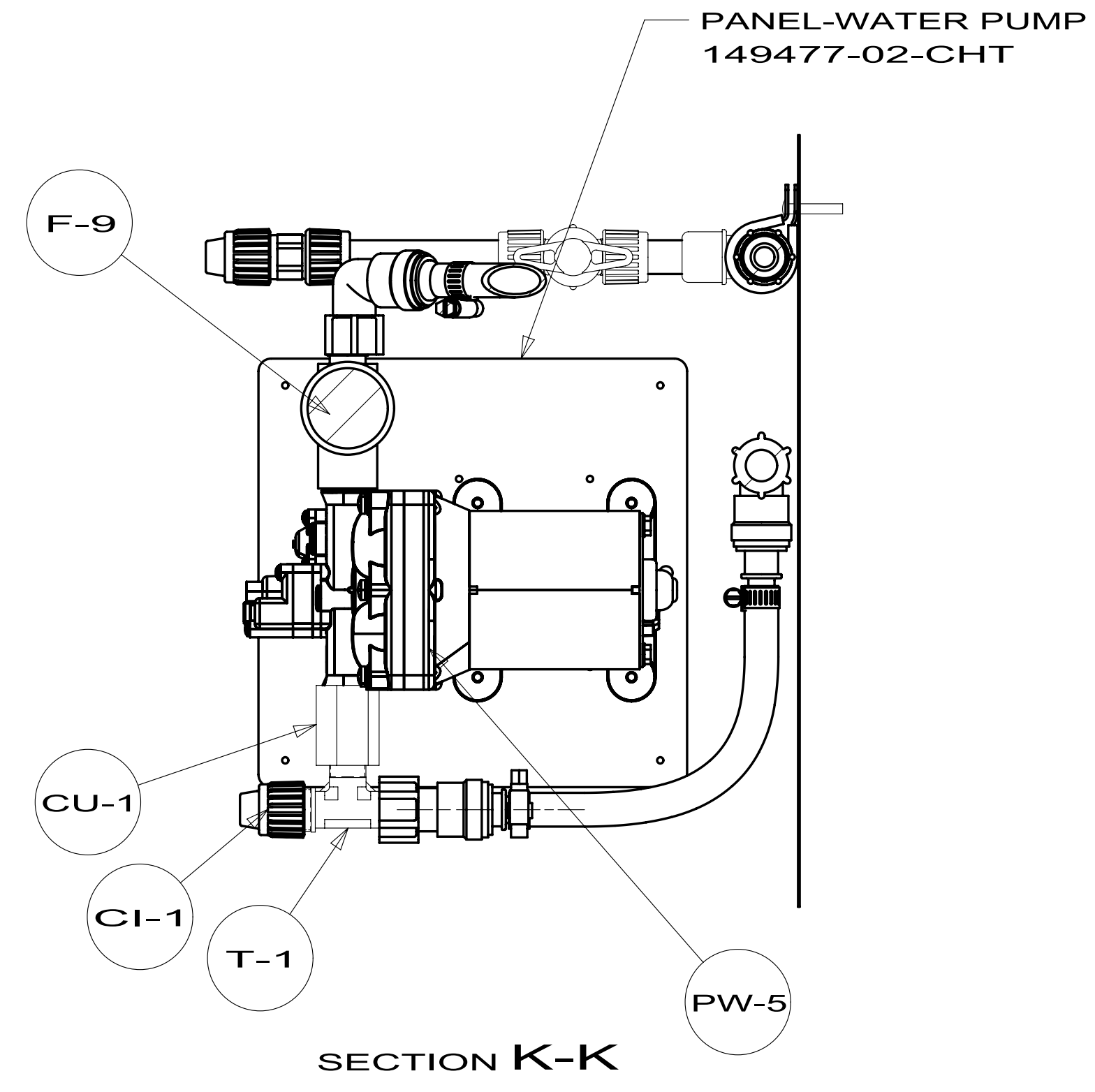
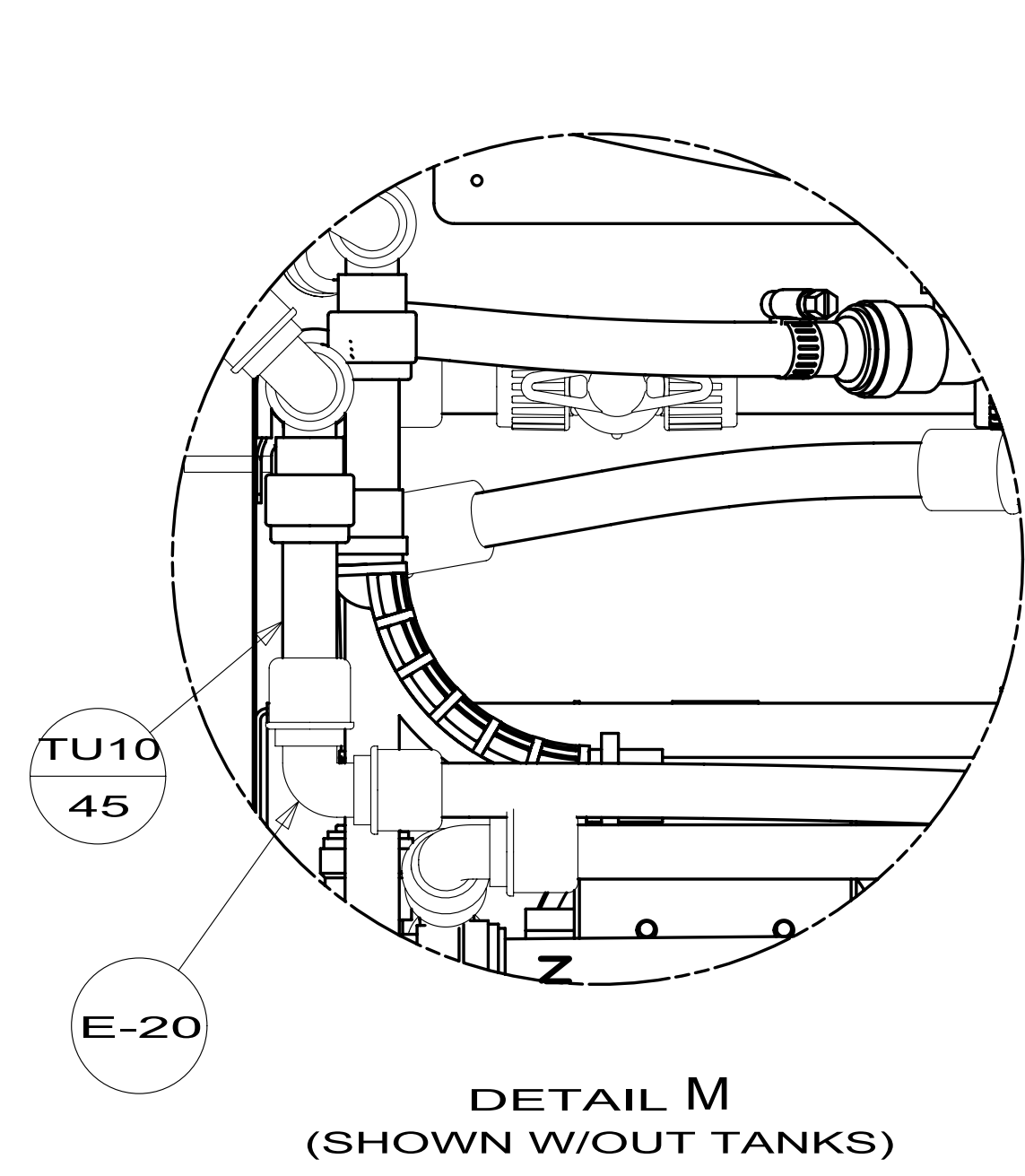
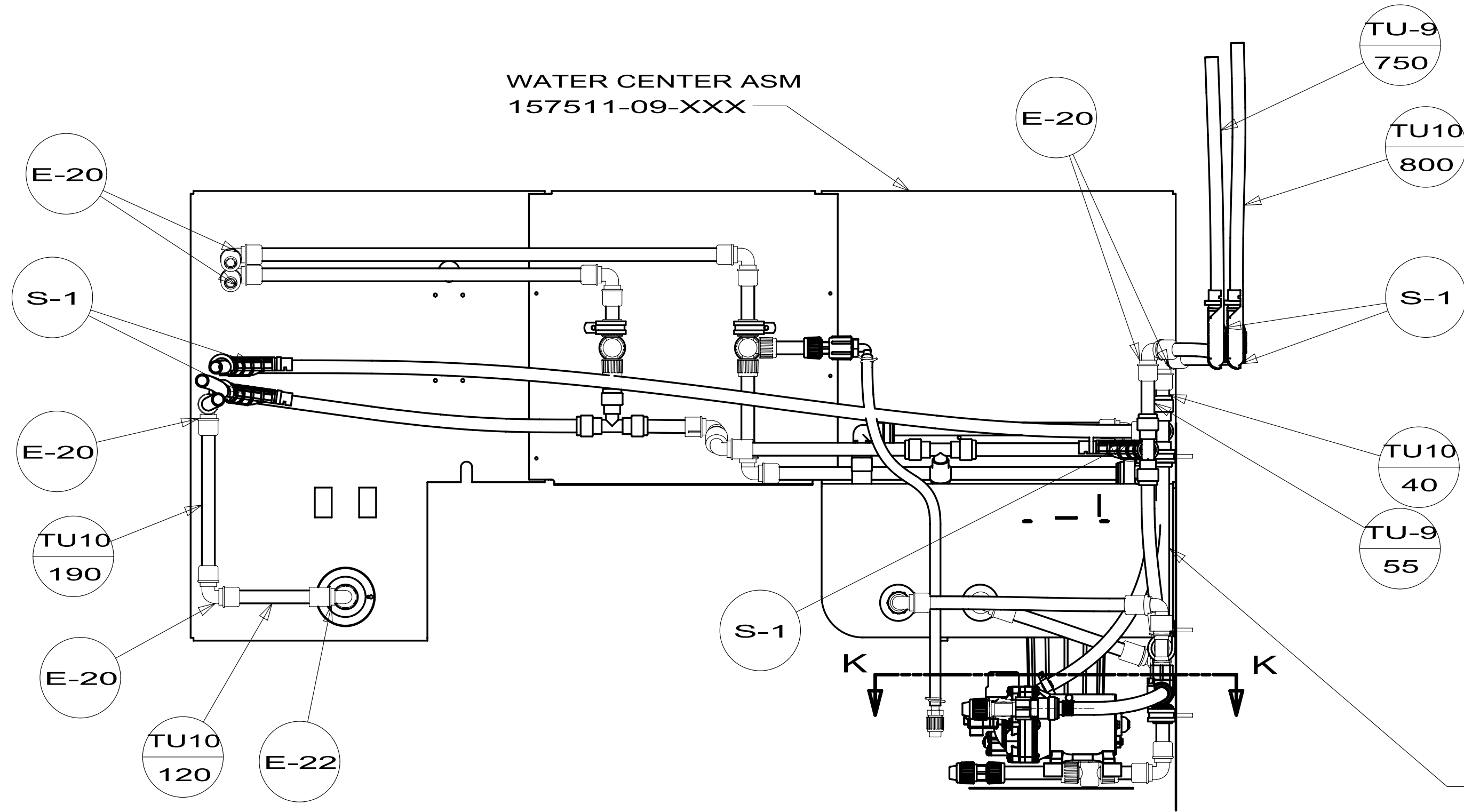


SECTION H-H

FIRST USED		12 P34Y	
DO NOT SCALE DRAWING			
TITLE: WATER SYSTEM INSTL			
SHEET 3	PART NO	178651	REV



TOP VIEW SHOWING LINES UNDER FLOOR



PANEL ASM-WATER SYSTEM  
163564-02-XXX

FIRST USED			12 P34Y
DO NOT SCALE DRAWING			
TITLE:			WATER SYSTEM INSTL
SHEET 4	PART NO	178651	REV