

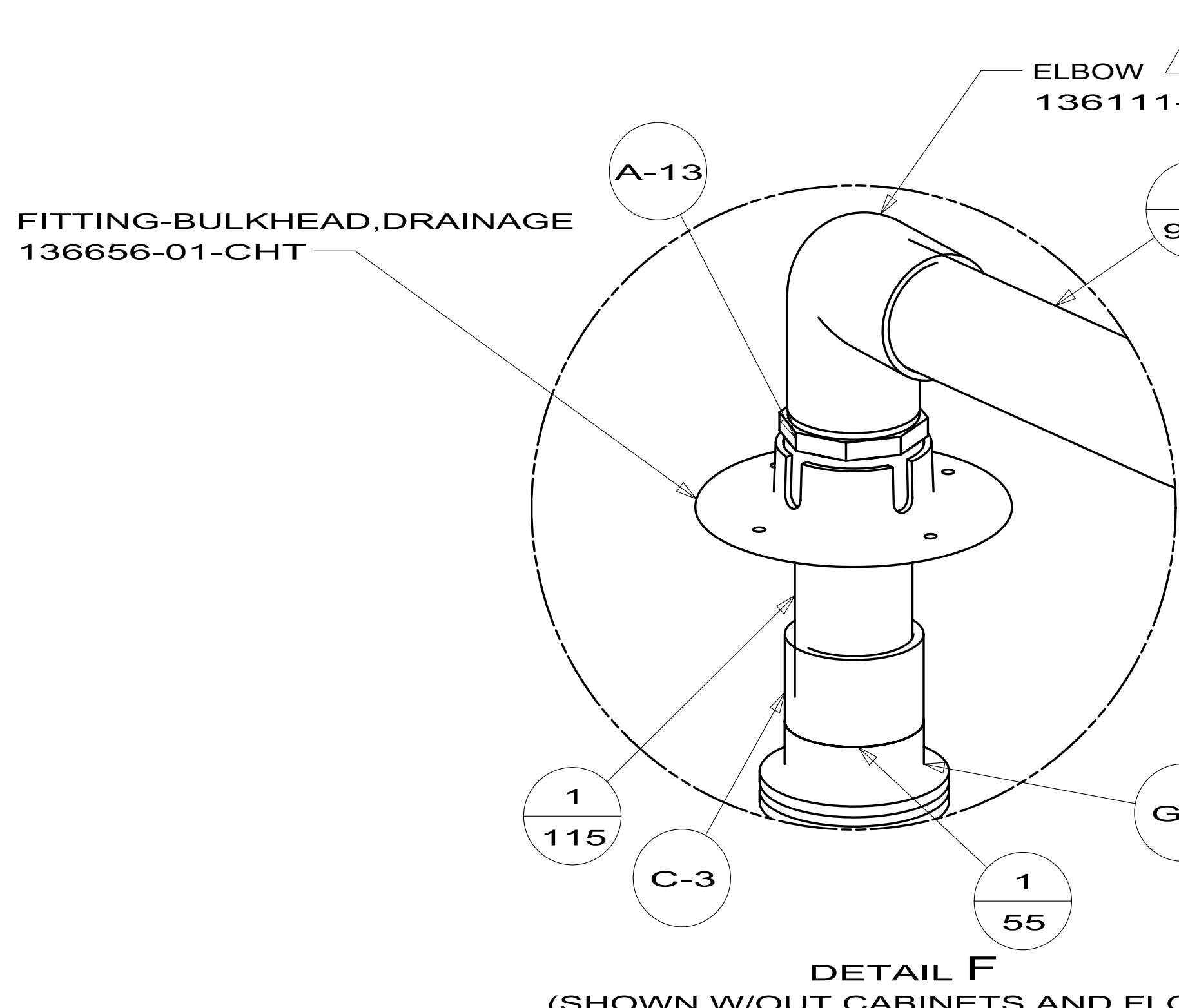
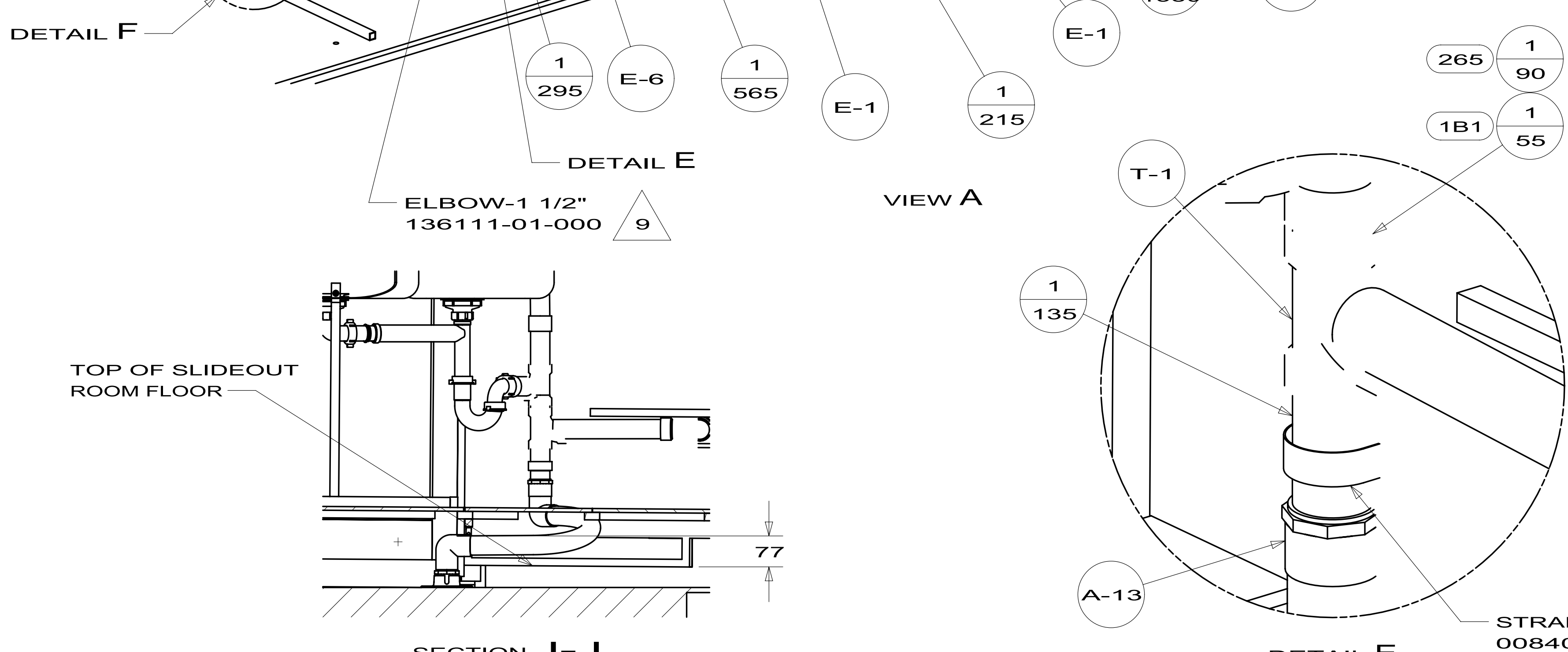
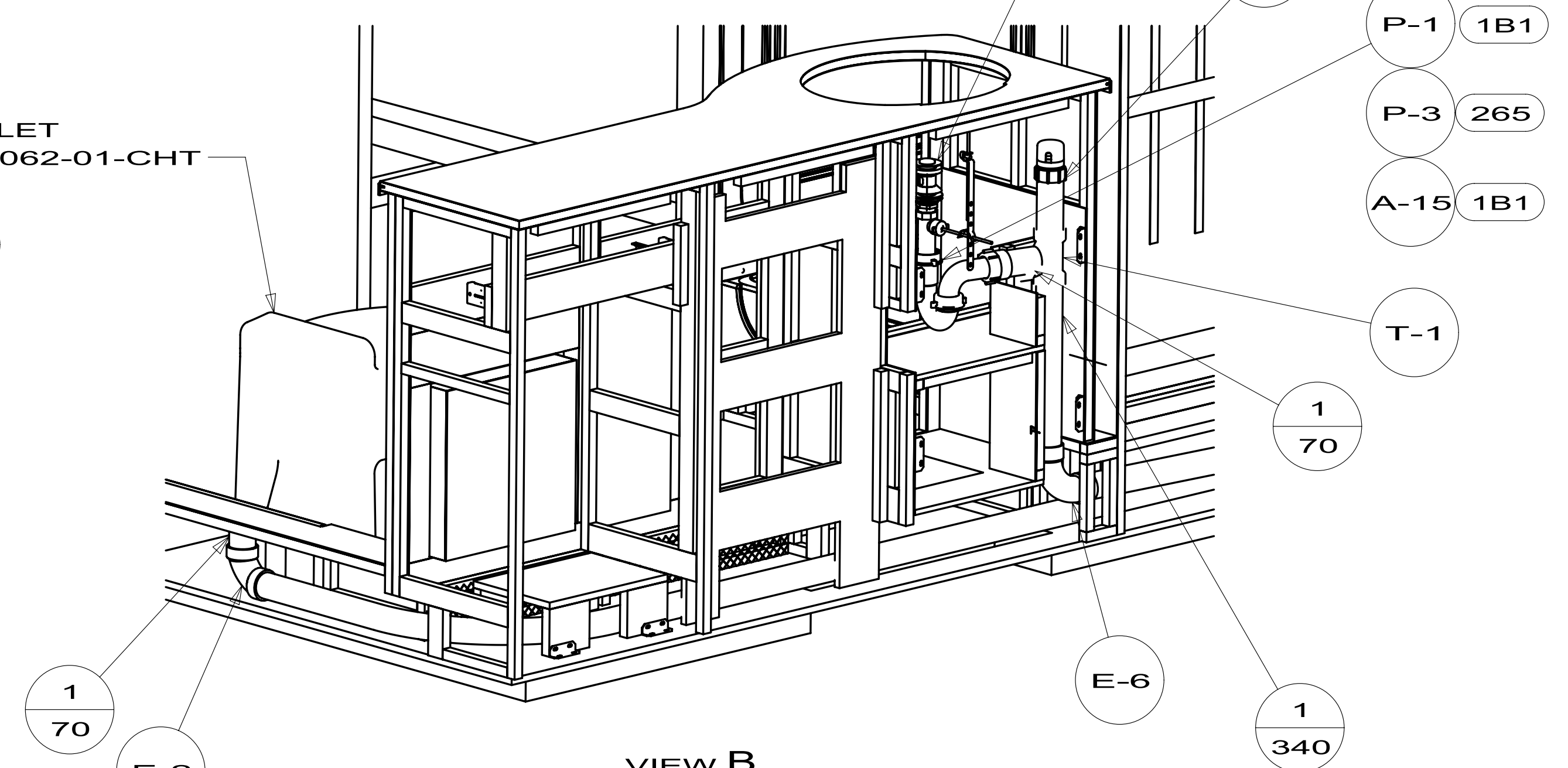
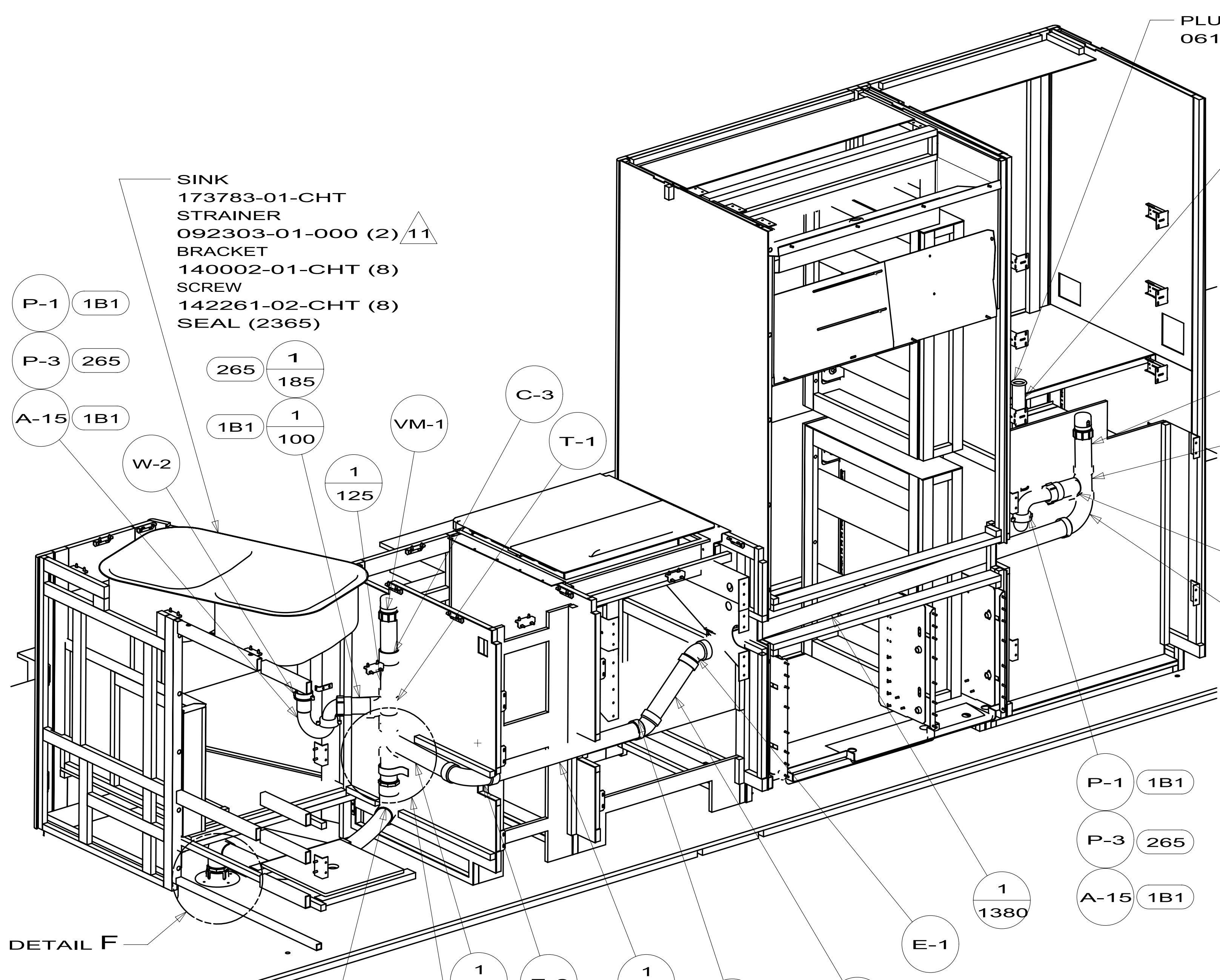
- 12. ADD TEFLON TAPE 010405-01-000.
- 11. USE SMOOTH PLUMBERS PUTTY 167459-01-000 TO SEAL STRAINER (0.2 PER STRAINER).
- 10. ATTACH TANK BRACKET TO RISER.
- 9. APPLY PRIMER 126427-02-000 AND CEMENT 126427-01-000 BETWEEN ELBOW AND FLEX PIPE.
- 8. SECURE DRAINAGE PIPES TO CABINET USING WIRE TIE 108046-02-000, AND SCREW 000G67-10-12B AT INTERVALS OF NOT MORE THAN 4 FEET APART.
- 7. SECURE VENT PIPE TO FLOOR WITH CLAMP 062401-02-000, SCREW 000G67-10-12B (2), BRACKET 136878-01-CHT.
- 6. VENT PIPE MUST PROJECT 51 MIN AND 64 MAX ABOVE ROOF FOR PROPER FIT AND FUNCTION.
- 5. SEAL AROUND SHOWER WITH SILICONE.
- 4. GLUE FITTING AFTER CABINET IS INSTALLED.
- 3. ALL PIPE AND FITTINGS TO BE ASSEMBLED WITH SOLVENT 004020-01-000 (USA), 004020-02-000 (CAN)
- 2. SLOPE OF TRAP ARM MUST BE 6 PER 305 mm.
- 1. SLOPE OF HORIZONTAL PIPING TO BE MINIMUM OF 3 PER 305 mm.

(1B1) CODES/STANDARDS USA
 (265) CODES/STANDARDS-CSA/CMVSS

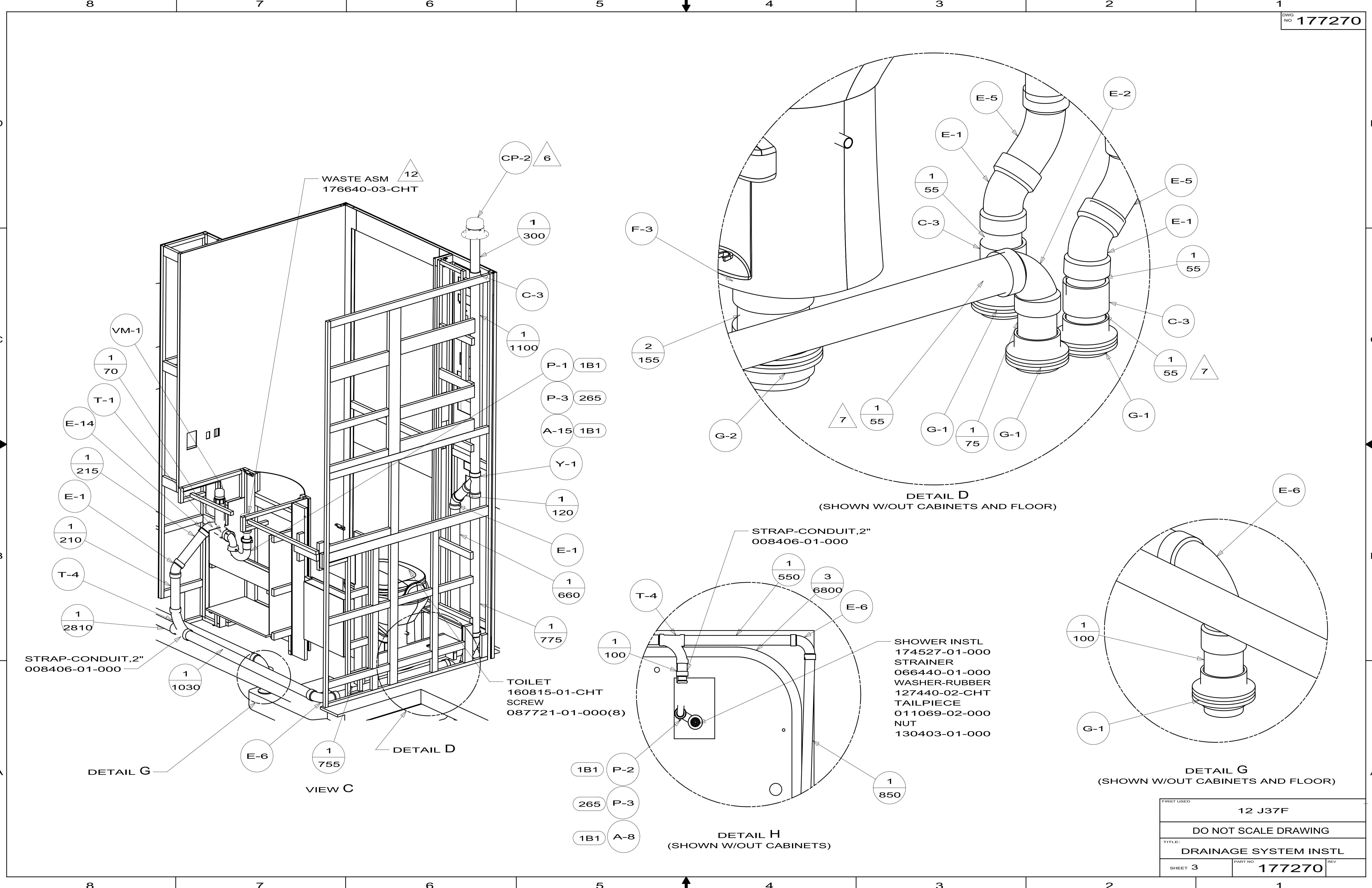
| | | |
|------------------------------|-----------------------------------|--|
| | | COPYRIGHT 2012 WINNEBAGO INDUSTRIES, INC. |
| DTR | ORIG. DATE | |
| CHKR | ALL DIMENSIONS ARE IN MILLIMETERS | |
| P.E. | | |
| M.E. | FIRST USED | |
| DSNR | 12 J37F | |
| UNSPECIFIED TOLERANCES ARE: | | MATERIAL: |
| WHOLE DIM (X) | : 3 | |
| ONE-PLACE (X.X) | : 1.5 | |
| TWO-PLACE (X.XX) | : 0.50 | |
| ANGLE | : 1° | |
| THIRD ANGLE PROJECTION | | |
| DO NOT SCALE DRAWING | | REFER TO ES0018 FOR FASTENER TIGHTENING GUIDELINES |
| TITLE: DRAINAGE SYSTEM INSTL | | |
| SHEET 1 OF 4 | PART NO 177270 | REV |

FOR DRAINAGE CALLOUTS SEE DWG NO 116229-01-000

NOTES:



| | | |
|------------|-----------------------|-----|
| FIRST USED | 12 J37F | |
| TITLE: | DO NOT SCALE DRAWING | |
| | DRAINAGE SYSTEM INSTL | |
| SHEET 2 | PART NO 177270 | REV |



WASTE ASM
176640-03-CHT

DETAIL D
(SHOWN W/OUT CABINETS AND FLOOR)

DETAIL G
(SHOWN W/OUT CABINETS AND FLOOR)

DETAIL H
(SHOWN W/OUT CABINETS)

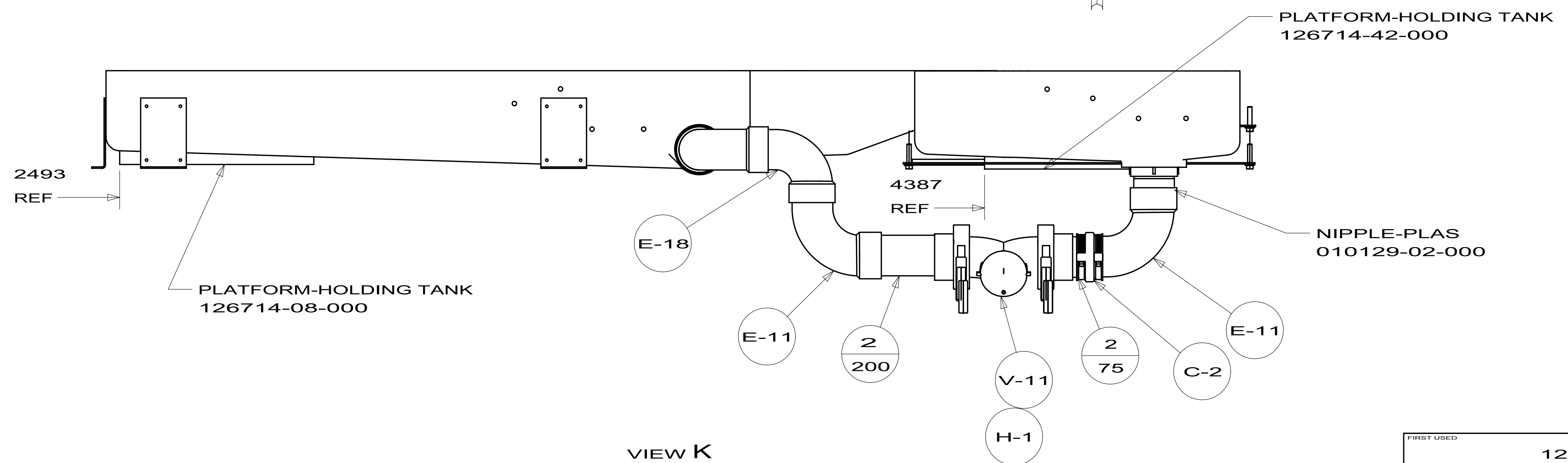
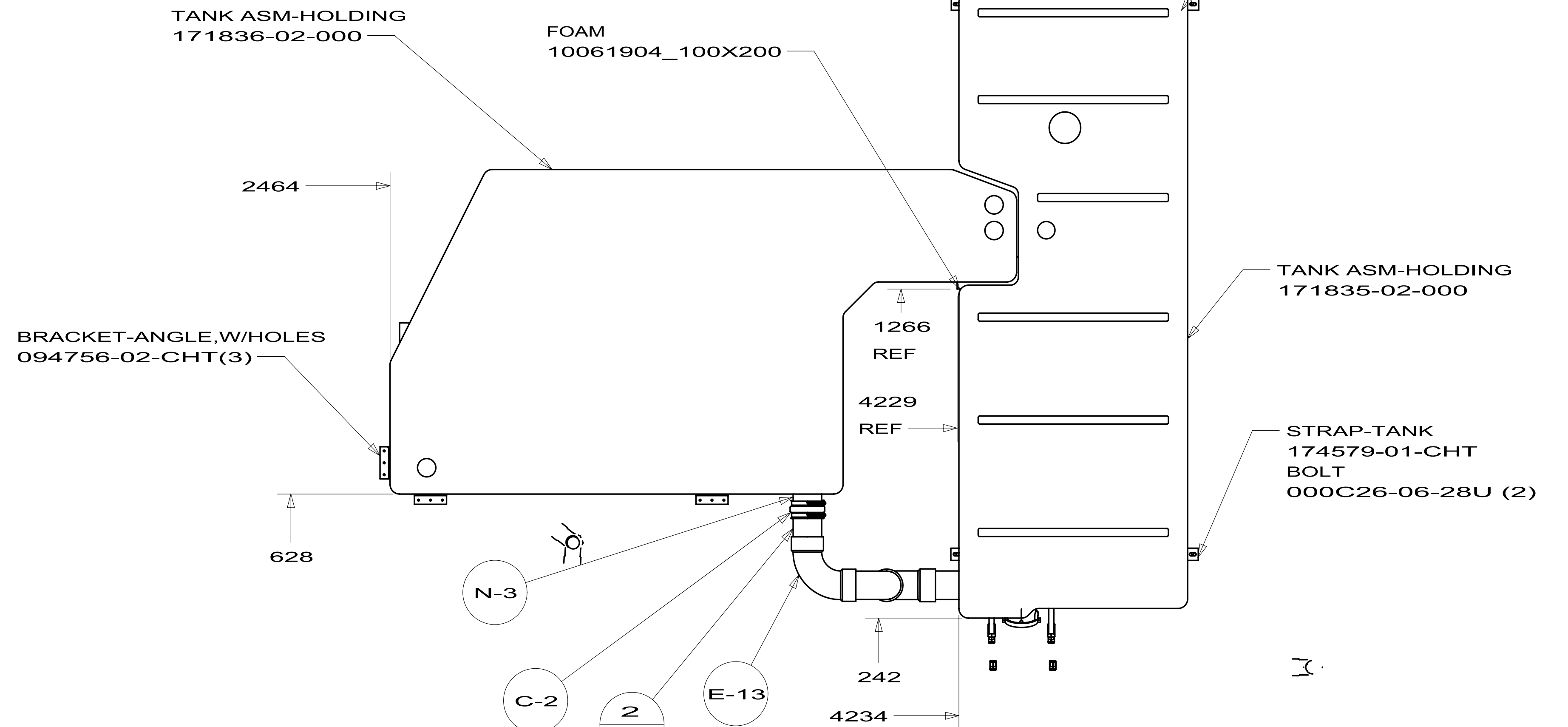
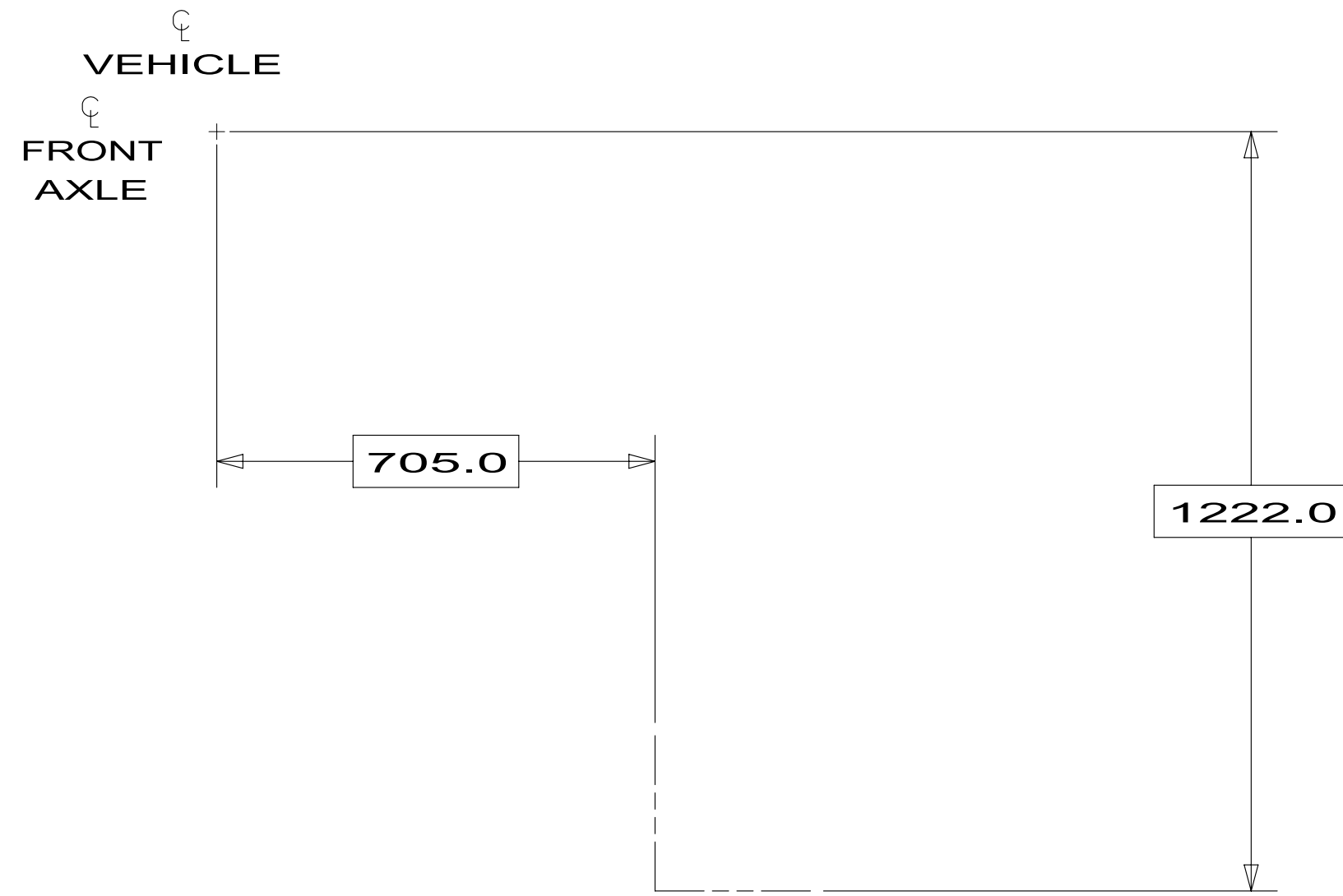
STRAP-CONDUIT, 2"
008406-01-000

STRAP-CONDUIT, 2"
008406-01-000

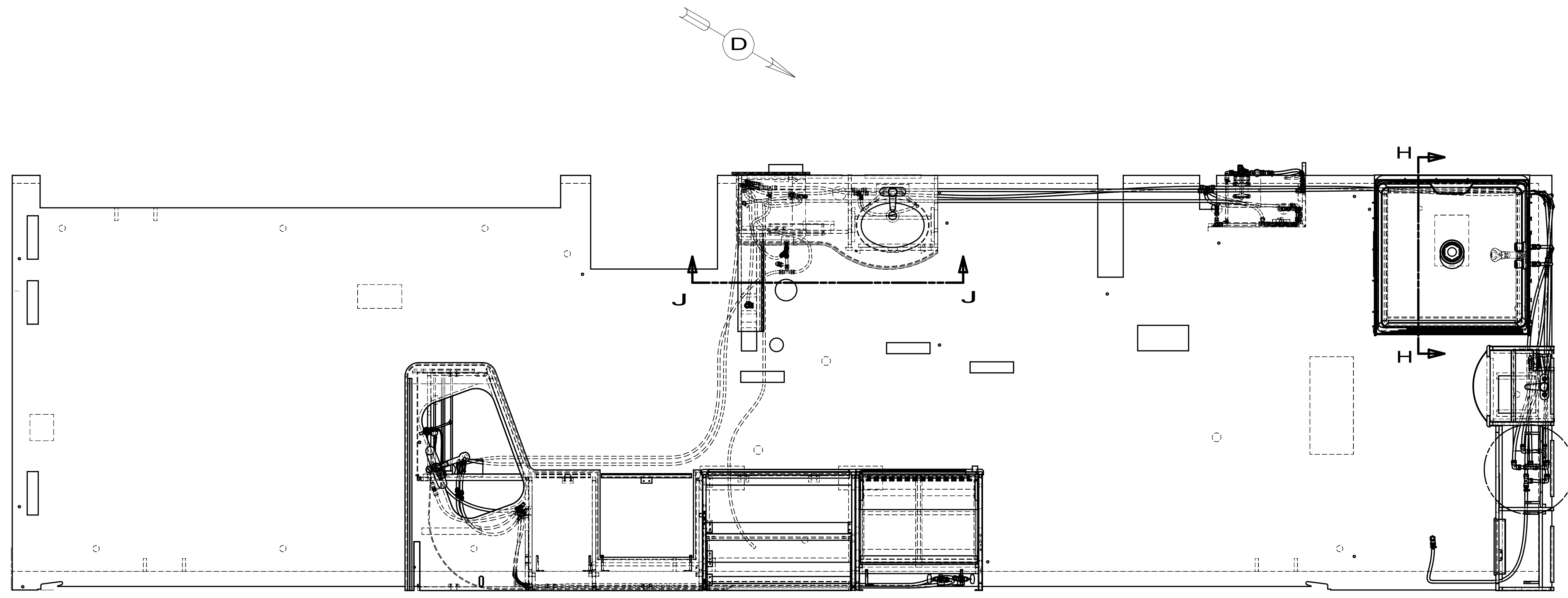
SHOWER INSTL
174527-01-000
STRAINER
066440-01-000
WASHER-RUBBER
127440-02-CHT
TAILPIECE
011069-02-000
NUT
130403-01-000

TOILET
160815-01-CHT
SCREW
087721-01-000(8)

| | | |
|---------------------------------|-------------------|-----|
| FIRST USED | 12 J37F | |
| DO NOT SCALE DRAWING | | |
| TITLE: DRAINAGE SYSTEM INSTL | | |
| SHEET 3 | PART NO 177270 | REV |



| | | |
|------------|-----------------------|-----|
| FIRST USED | 12 J37F | |
| TITLE: | DO NOT SCALE DRAWING | |
| | DRAINAGE SYSTEM INSTL | |
| SHEET 4 | PART NO 177270 | REV |

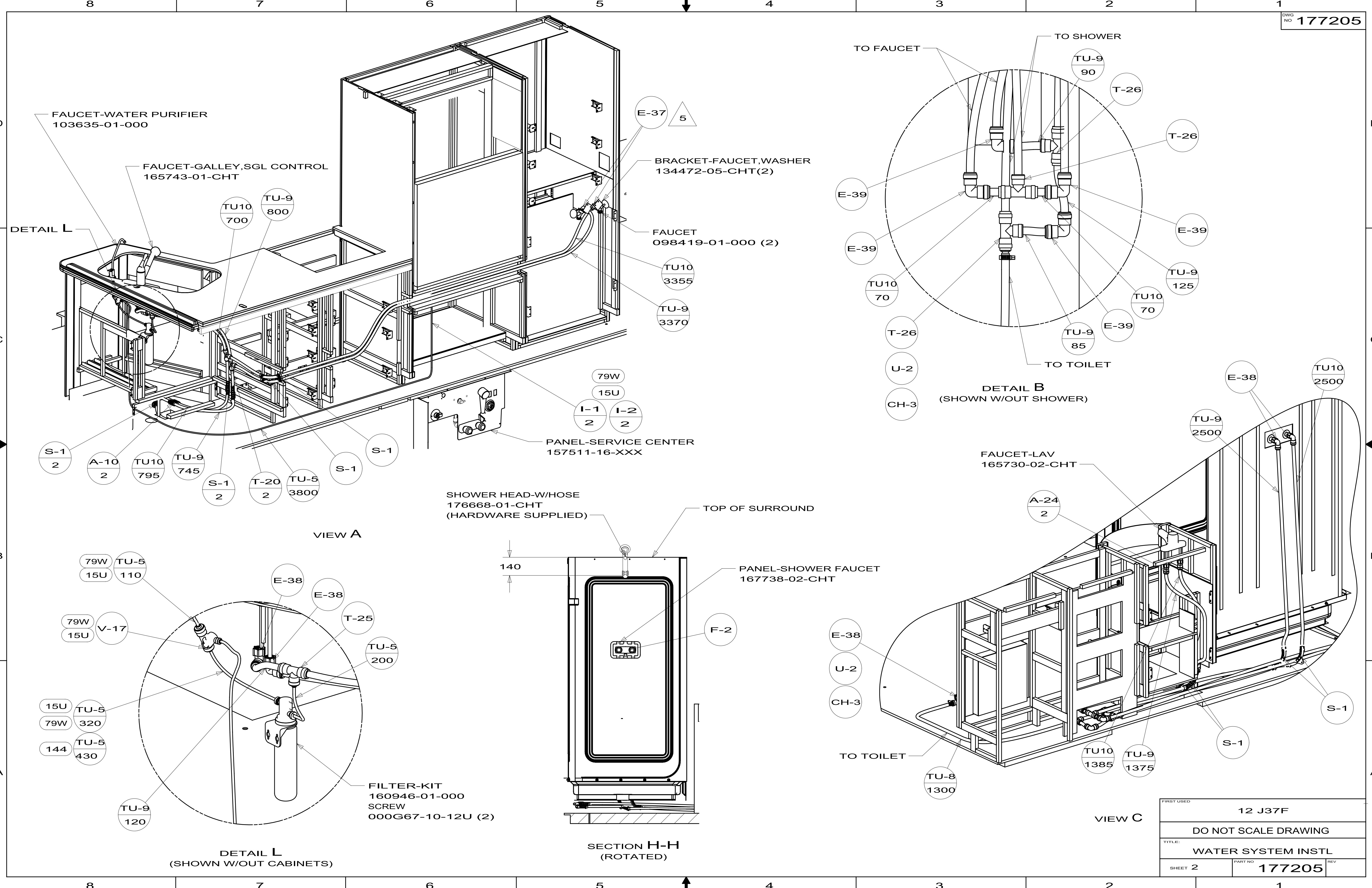


- 144 REFRIGERATOR-DOUBLE DOOR
- 15U REFRIGERATOR/FRZR-W/ICEMAKER
- 29B WATER PURIFIER
- 1B2 WTR HTR-10 GAL/ELEC/LP/MTR/AID
- 53E WATER SYS WINTERIZATION PKG

- NOTES:
- 6 USE IN PLACE OF SUPPLIED SCREWS TO ATTACH BRACKET TO WALL.
 - 5 ADD TEFLON TAPE 010405-02-000.
 - 4 ADD TEFLON TAPE 010405-01-000.
 - 3. ALL TUBING TO BE SECURED AT 1200 INTERVALS MAXIMUM WITH CLAMP 010495-01-000 AND SCREW 000G67-10-12B OR EQUIVALENT.
 - 2. TUBING TO BE INSTALLED WITH SUFFICIENT SLOPE TO PROVIDE DRAINAGE TO NEAREST VALVE.
 - 1. PLASTIC FITTINGS TO BE SEALED WITH SEALANT 084456-01-000.

FOR
WATER
CALLOUTS
SEE DWG NO
116230-01-000

| | | | |
|-----------------------------|------------|--|-----|
| | | COPYRIGHT 2011 WINNEBAGO INDUSTRIES, INC. | |
| DTR | ORIG. DATE | ALL DIMENSIONS ARE IN MILLIMETERS | |
| CHKR | | | |
| P.E. | | | |
| M.E. | FIRST USED | | |
| DSNR | | 12 J37F | |
| UNSPECIFIED TOLERANCES ARE: | | MATERIAL: | |
| WHOLE DIM (X) | : 3 | | |
| ONE-PLACE (X.X) | : 1.5 | | |
| TWO-PLACE (X.XX) | : 0.50 | | |
| ANGLE | : 1° | | |
| THIRD ANGLE PROJECTION | | | |
| DO NOT SCALE DRAWING | | REFER TO ES0018 FOR FASTENER TIGHTENING GUIDELINES | |
| TITLE: WATER SYSTEM INSTL | | | |
| SHEET 1 OF 4 | PART NO | 177205 | REV |
| REF: | 1 | | |



FAUCET-WATER PURIFIER
103635-01-000

FAUCET-GALLEY, SGL CONTROL
165743-01-CHT

E-37
5

BRACKET-FAUCET, WASHER
134472-05-CHT(2)

FAUCET
098419-01-000 (2)

TU10
3355

TU-9
3370

79W
15U

I-1
2 I-2
2

PANEL-SERVICE CENTER
157511-16-XXX

SHOWER HEAD-W/HOSE
176668-01-CHT
(HARDWARE SUPPLIED)

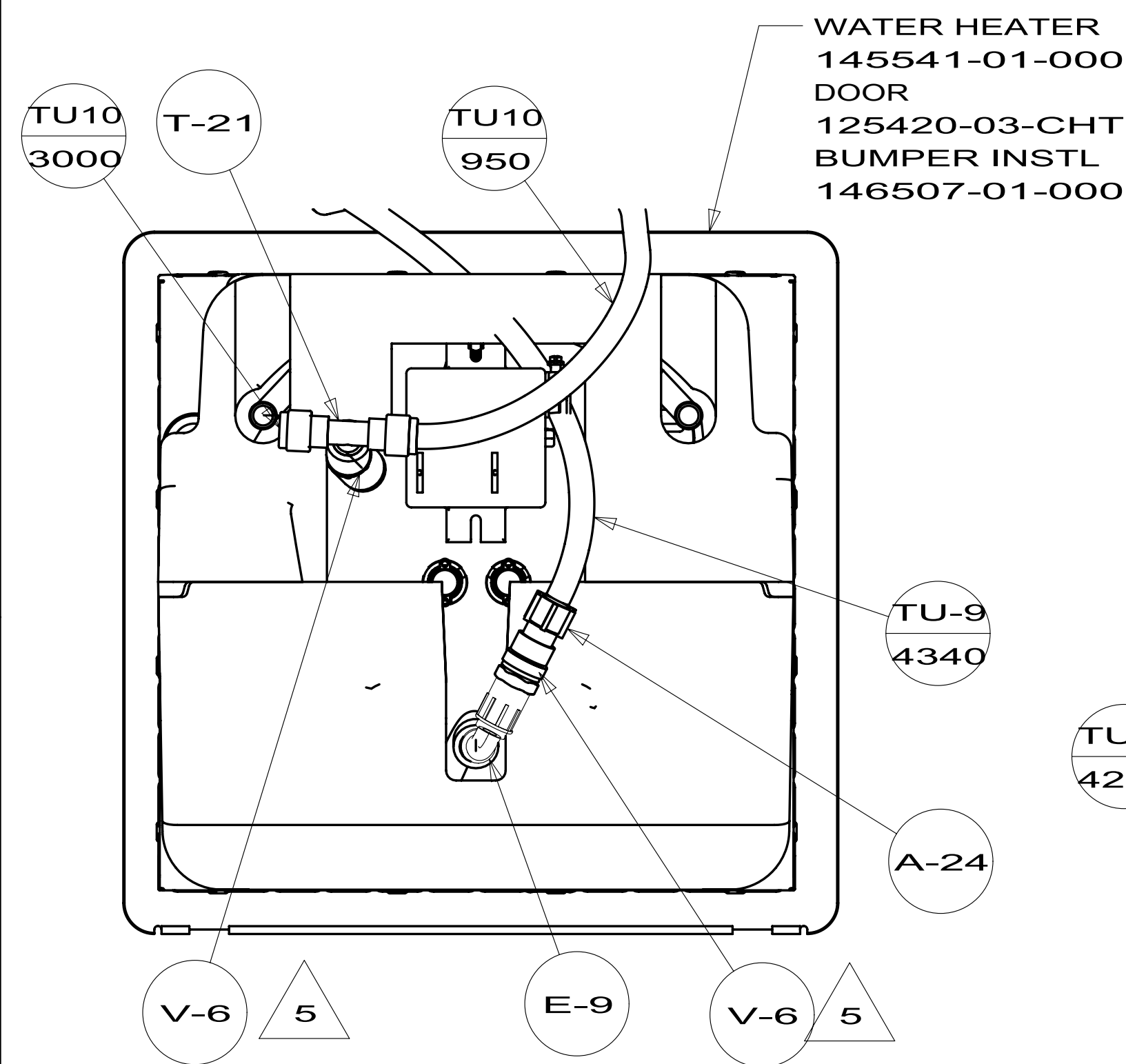
TOP OF SURROUND

PANEL-SHOWER FAUCET
167738-02-CHT

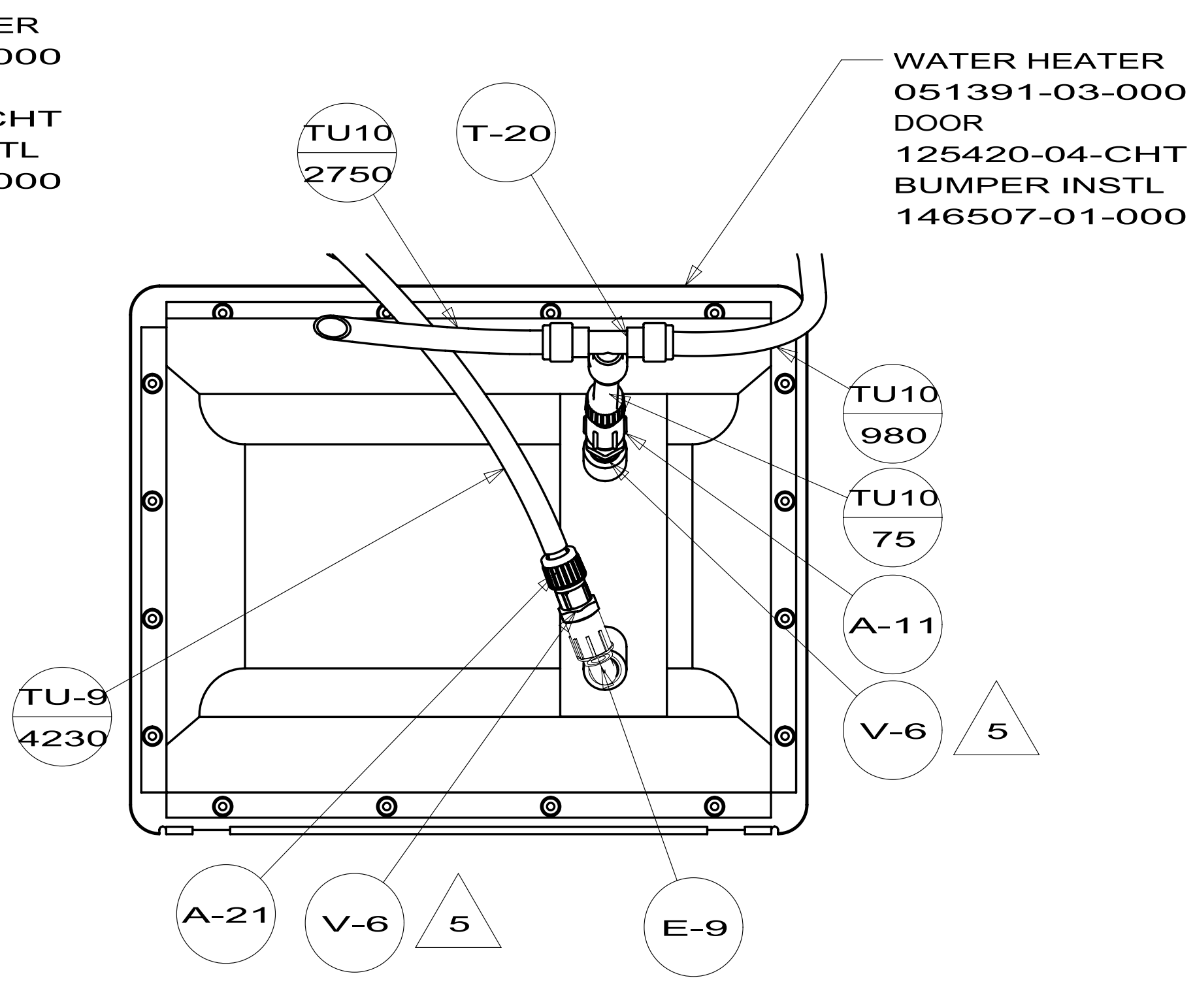
FAUCET-LAV
165730-02-CHT

FILTER-KIT
160946-01-000
SCREW
000G67-10-12U (2)

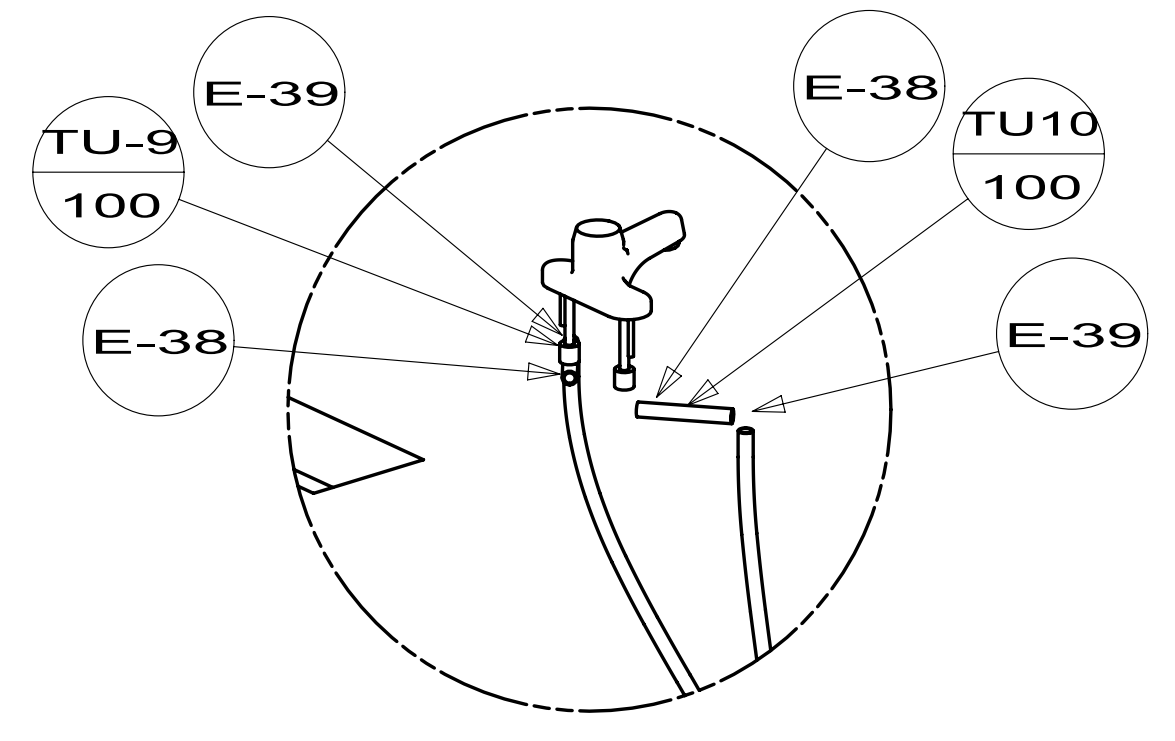
| | | |
|------------|----------------------|--------|
| FIRST USED | 12 J37F | |
| TITLE: | DO NOT SCALE DRAWING | |
| | WATER SYSTEM INSTL | |
| SHEET 2 | PART NO | 177205 |
| | REV | |



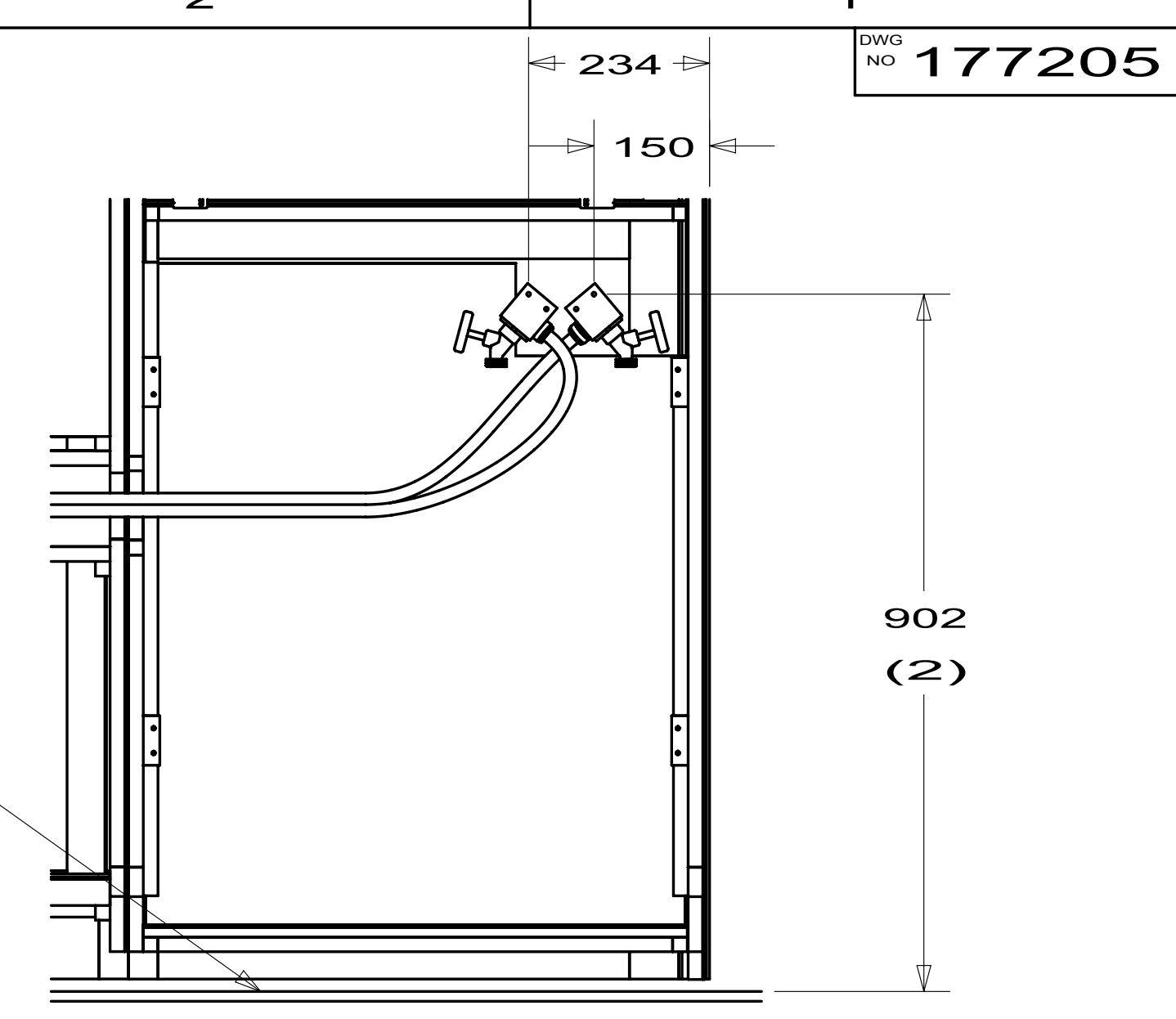
SECTION J-J
(SHOWN W/OUT ACCESS PANEL)
1B2



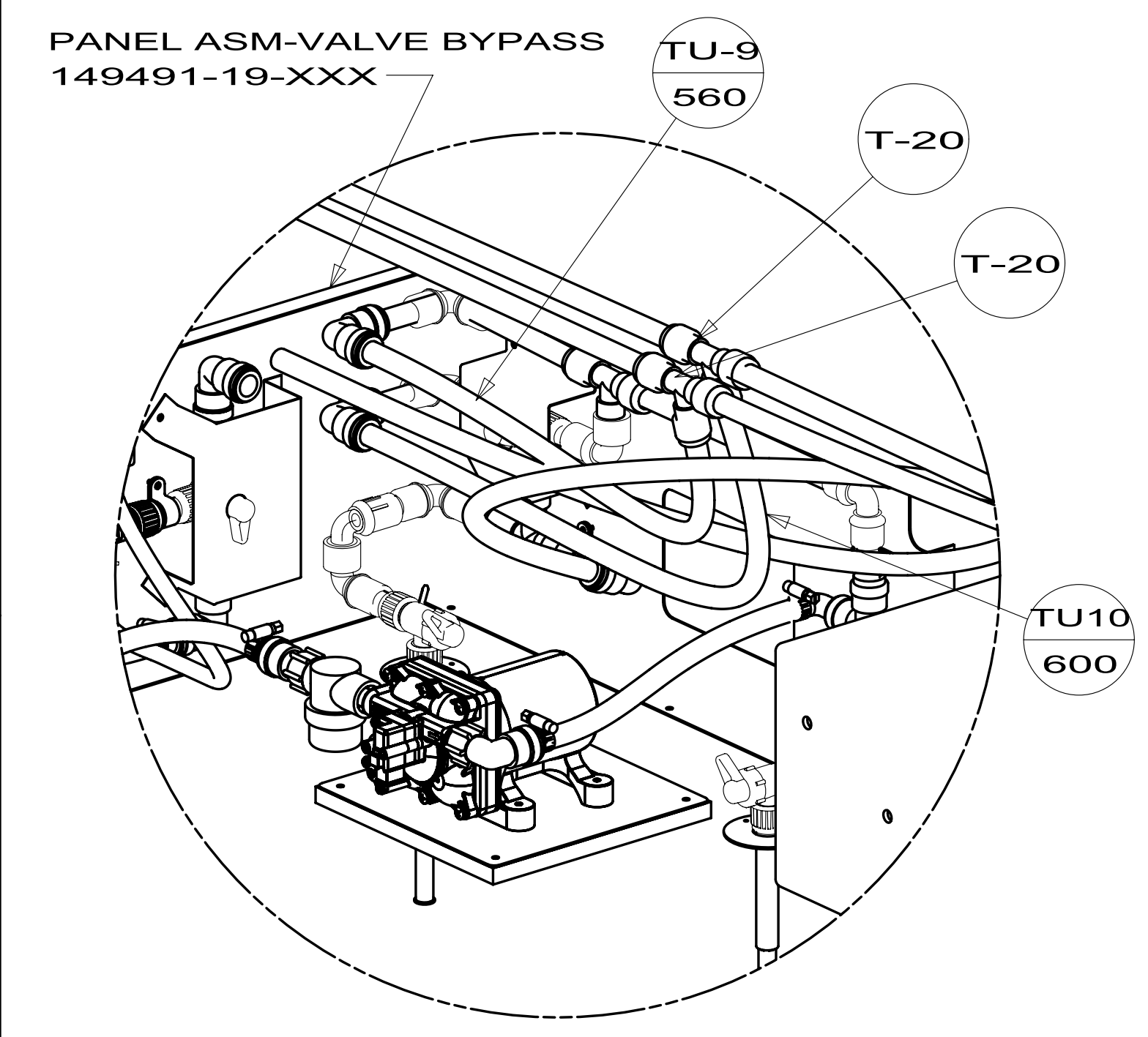
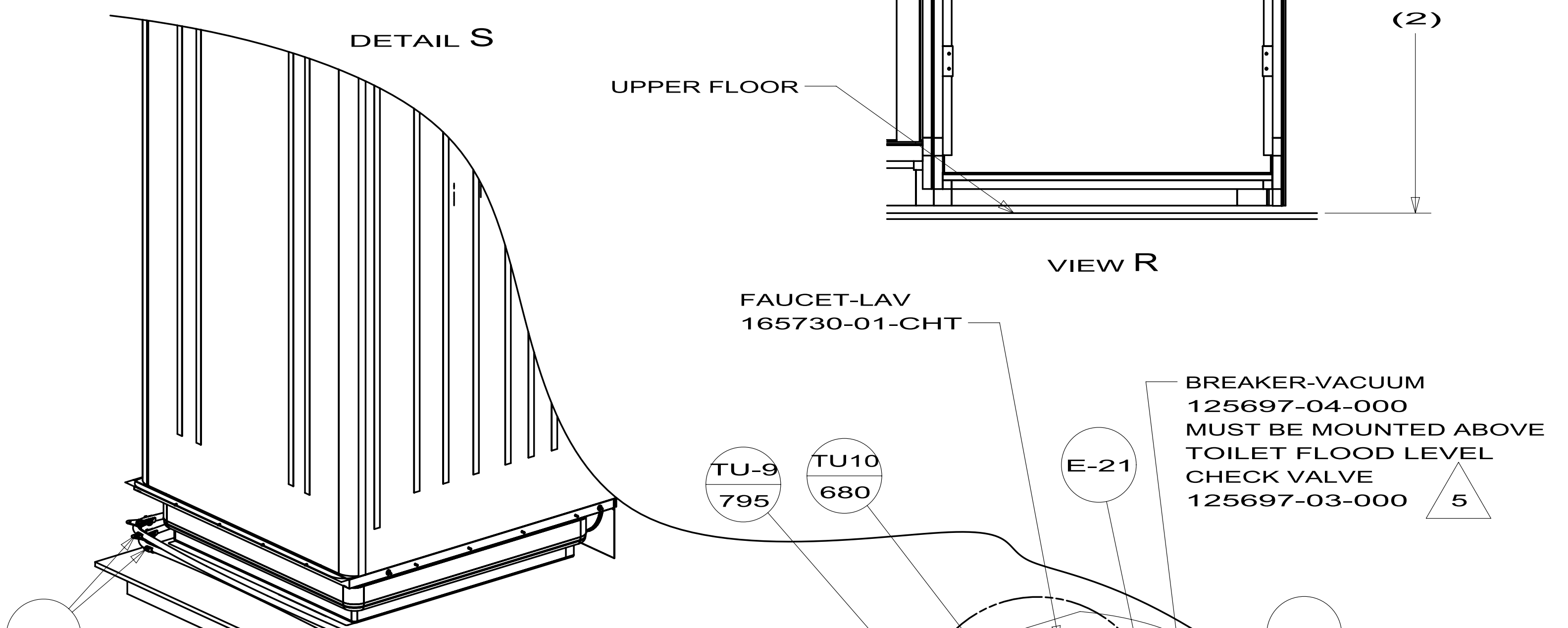
SECTION J-J
(SHOWN W/OUT ACCESS PANEL)
611



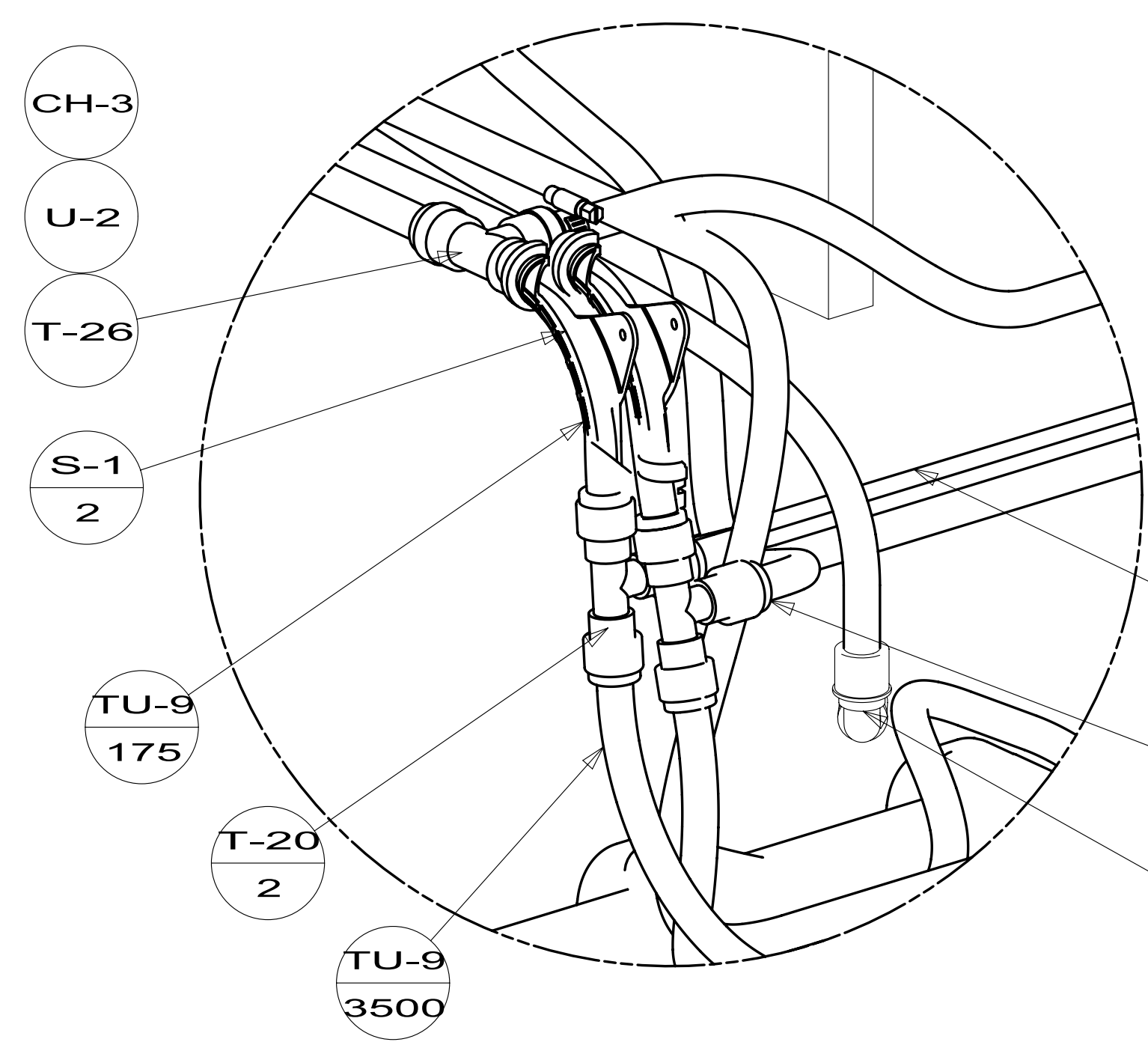
DETAIL S



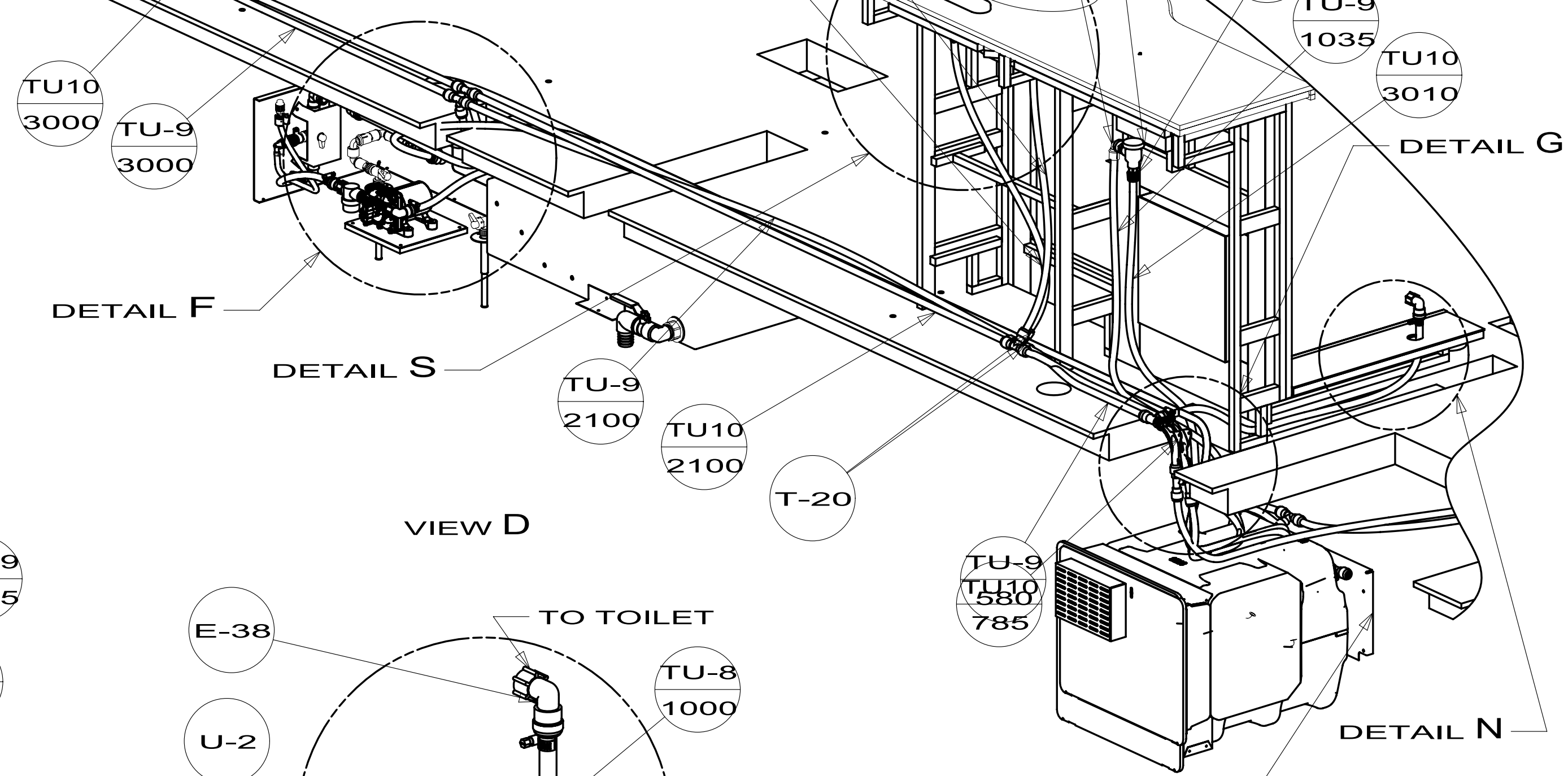
VIEW R



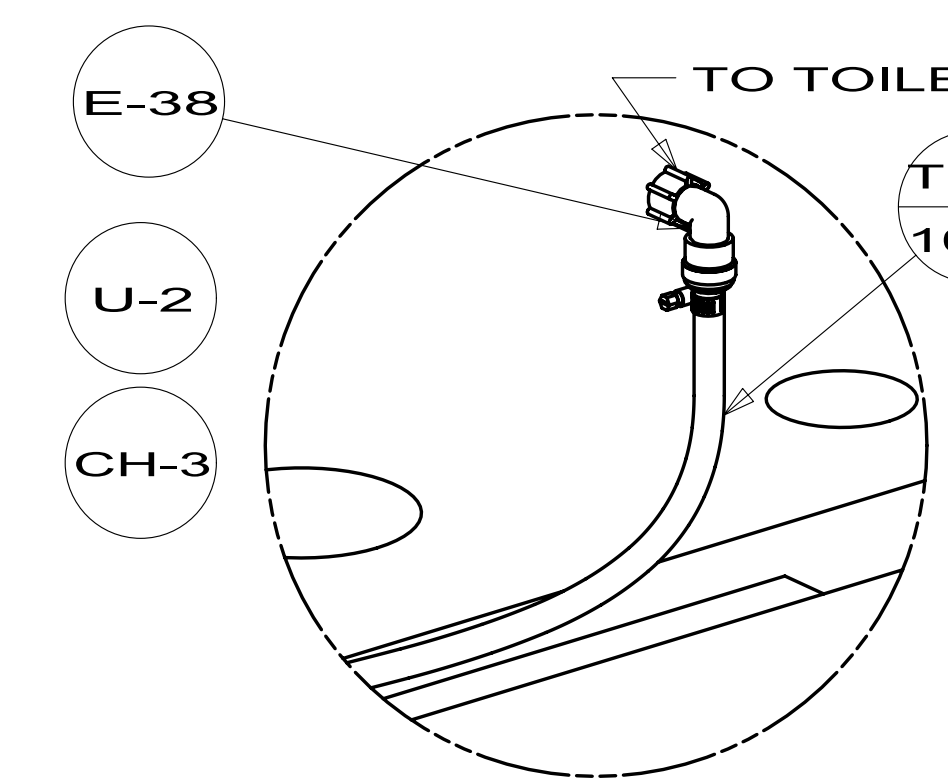
DETAIL F
(SHOWN W/OUT FLOOR & CABINETS)



DETAIL G
(SHOWN W/OUT FLOOR & CABINETS)

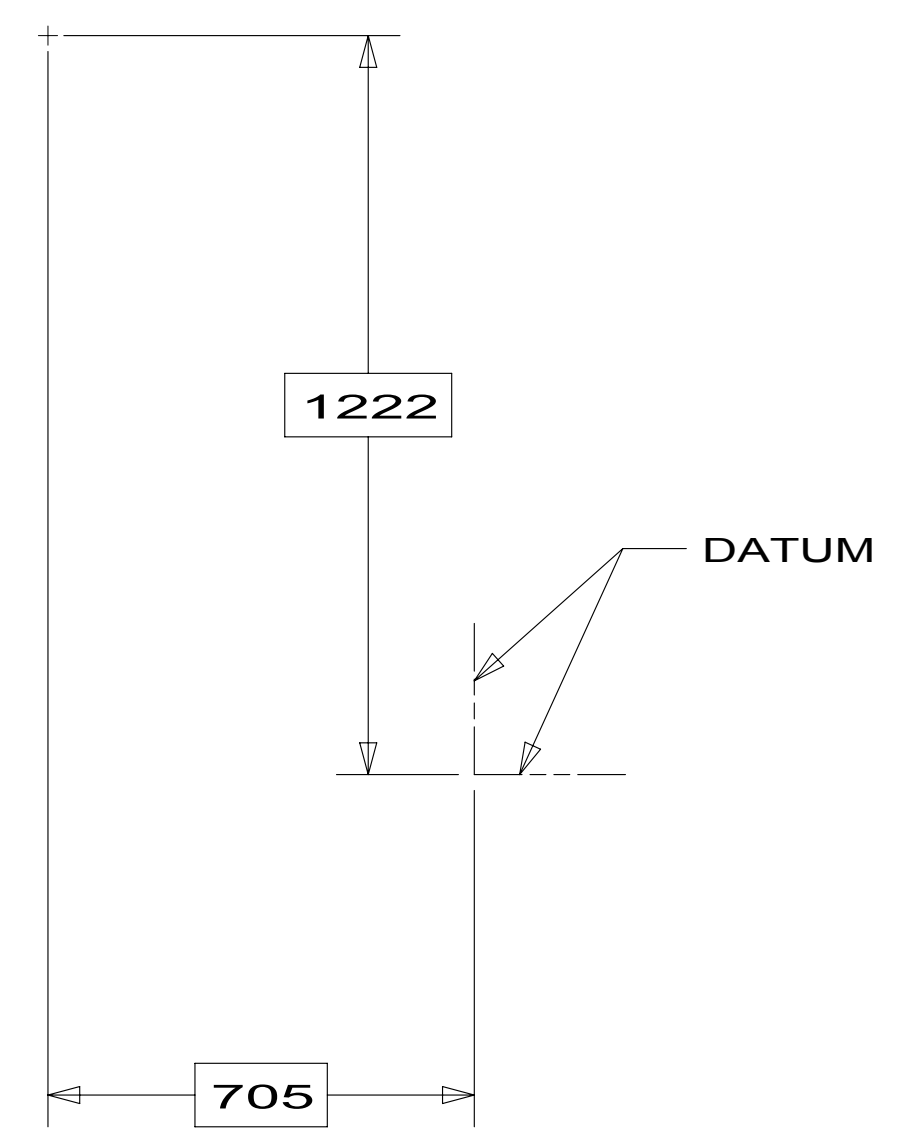


VIEW D

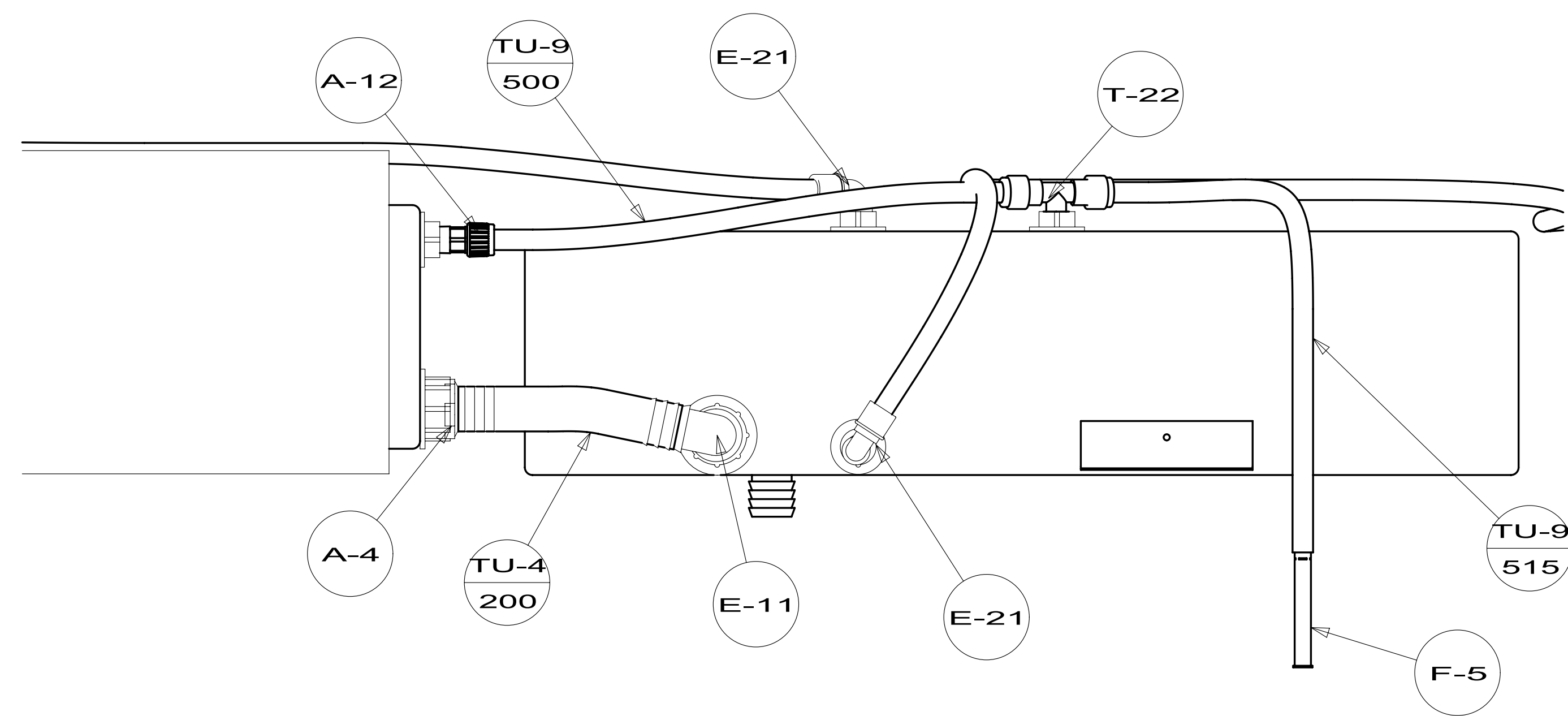
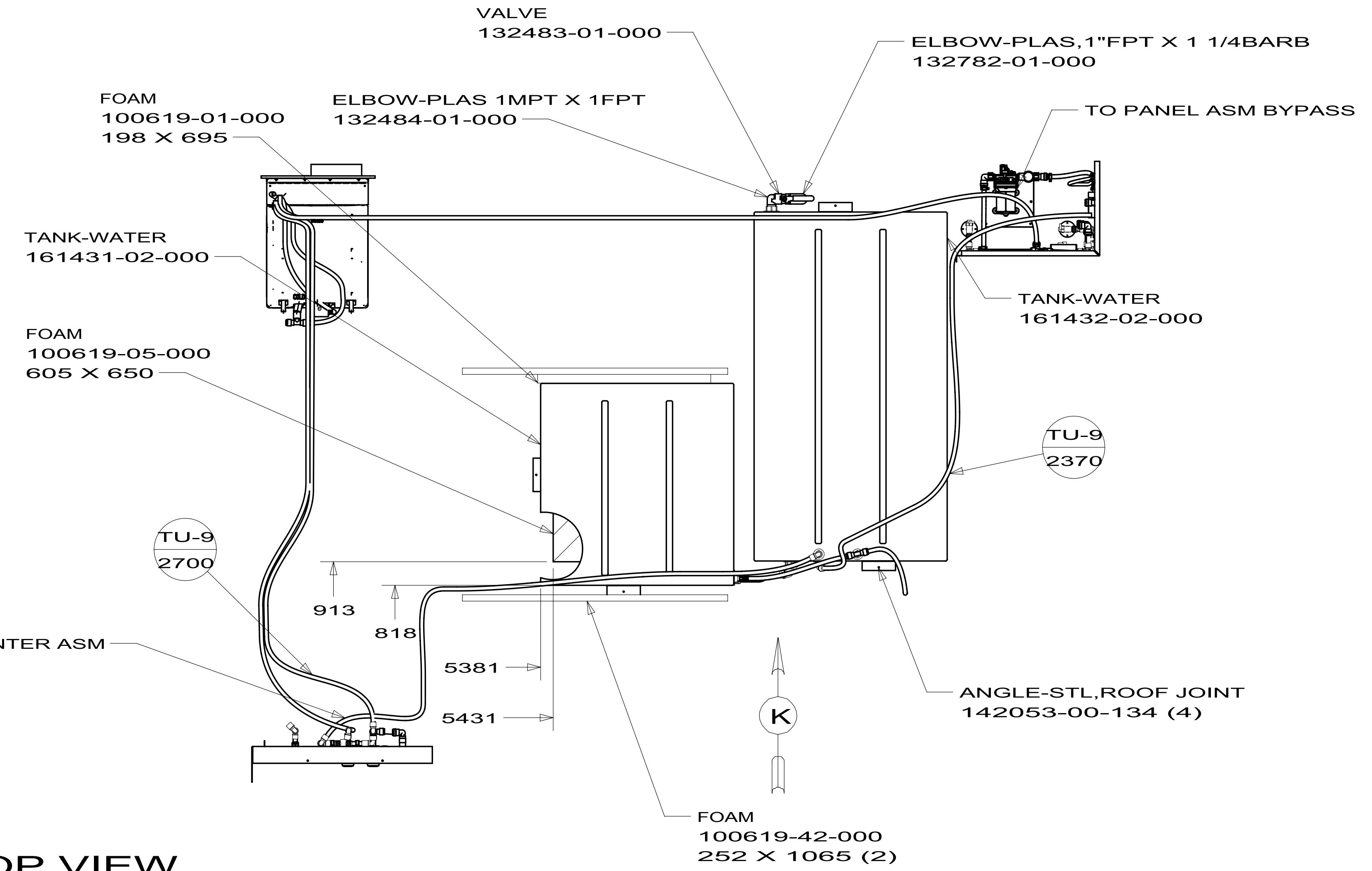


DETAIL N
(SHOWN W/OUT CABINETS)

| | | |
|----------------------|--------------------|-----|
| FIRST USED | 12 J37F | |
| DO NOT SCALE DRAWING | | |
| TITLE: | WATER SYSTEM INSTL | |
| SHEET 3 | PART NO 177205 | REV |



**TOP VIEW
(ONLY SHOWING TANKS AND PIPING TO TANKS)**



VIEW K

| | | |
|------------|----------------------|-----|
| FIRST USED | 12 J37F | |
| TITLE: | DO NOT SCALE DRAWING | |
| | WATER SYSTEM INSTL | |
| SHEET 4 | PART NO 177205 | REV |