

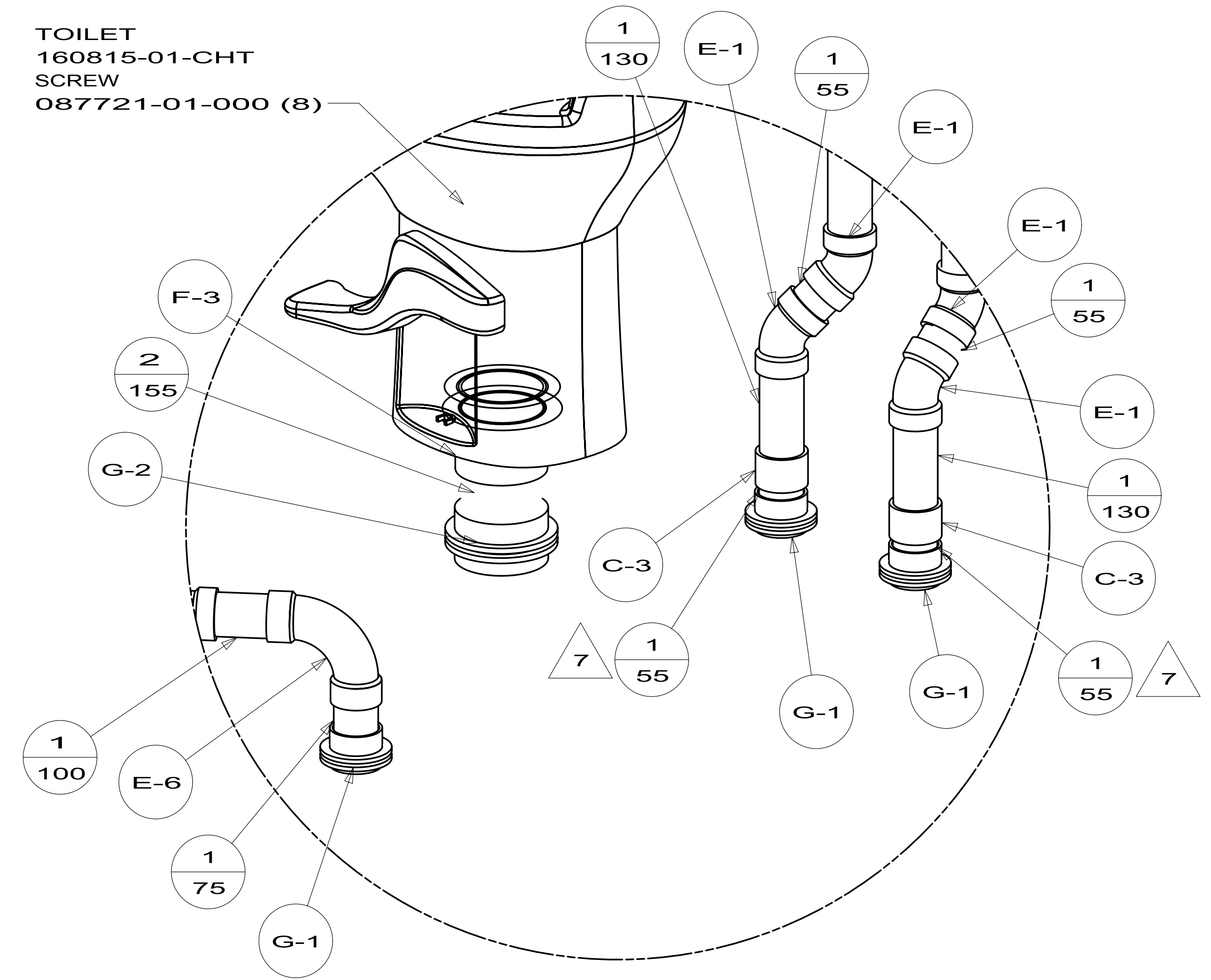
- 12. ADD TEFLON TAPE 010405-01-000.
- 11. USE SMOOTH PLUMBERS PUTTY 167459-01-000 TO SEAL STRAINER (0.2 PER STRAINER).
- 10. ATTACH TANK BRACKET TO RISER.
- 9. APPLY PRIMER 126427-02-000 AND CEMENT 126427-01-000 BETWEEN ELBOW AND FLEX PIPE.
- 8. SECURE DRAINAGE PIPES TO CABINET USING WIRE TIE 108046-02-000, AND SCREW 000G67-10-12B AT INTERVALS OF NOT MORE THAN 4 FEET APART.
- 7. SECURE VENT PIPE TO FLOOR WITH CLAMP 062401-02-000 (2), SCREW 000G67-10-12B (2), BRACKET 136878-01-CHT (2).
- 6. VENT PIPE MUST PROJECT 51 MIN AND 64 MAX ABOVE ROOF FOR PROPER FIT AND FUNCTION.
- 5. SEAL AROUND SHOWER WITH SILICONE.
- 4. GLUE FITTING AFTER CABINET IS INSTALLED.
- 3. ALL PIPE AND FITTINGS TO BE ASSEMBLED WITH SOLVENT 004020-01-000 (USA), 004020-02-000 (CAN)
- 2. SLOPE OF TRAP ARM MUST BE 6 PER 305 mm.
- 1. SLOPE OF HORIZONTAL PIPING TO BE MINIMUM OF 3 PER 305 mm.

- (21S) WASHER & DRYER-PAIR
- (21M) WASHER/DRYER PREP
- (54E) WASHER/DRYER COMBO
- (1B1) CODES/STANDARDS USA
- (265) CODES/STANDARDS-CSA/CMVSS

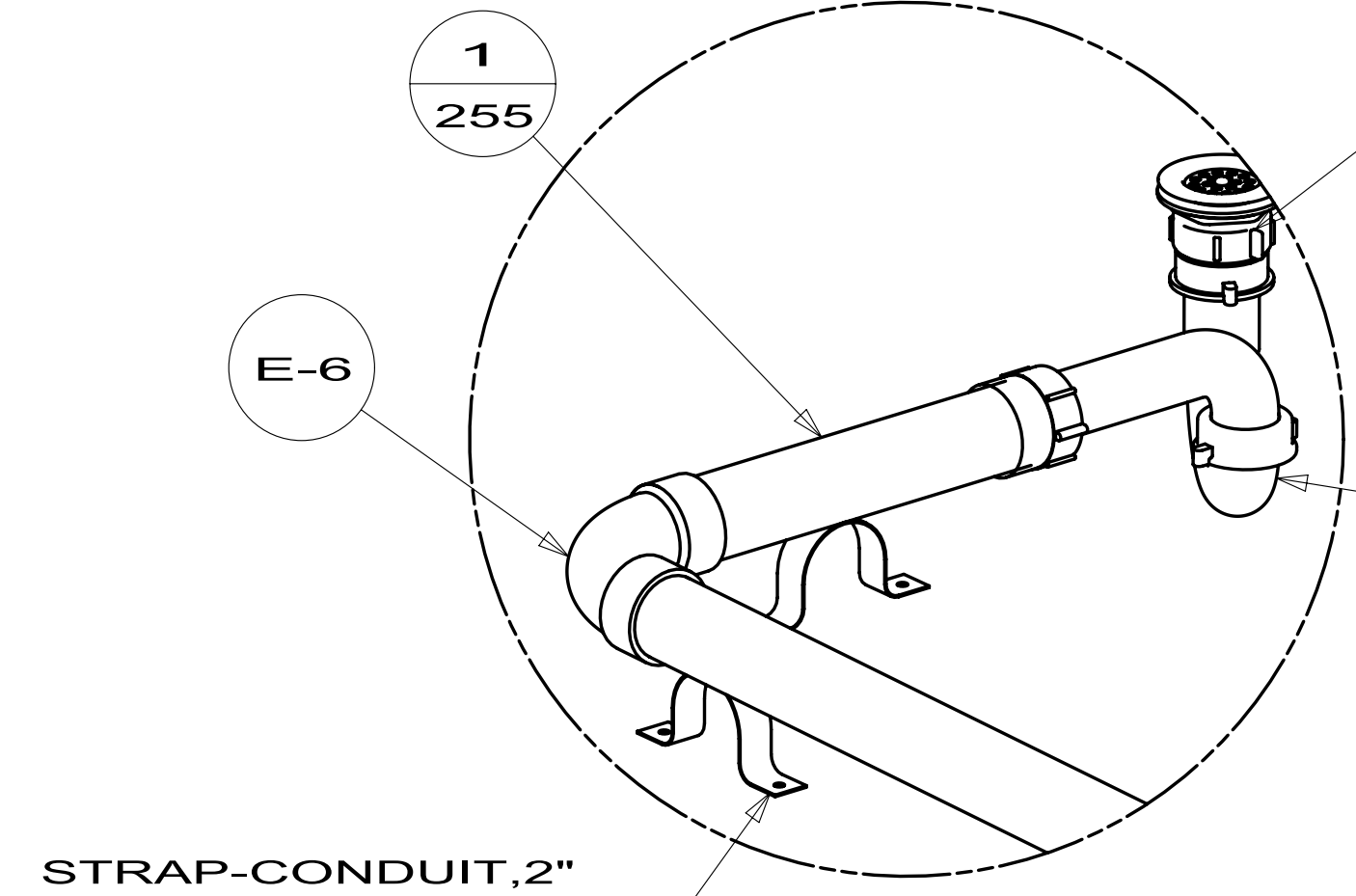
		COPYRIGHT 2011 WINNEBAGO INDUSTRIES, INC.
DTR	ORIG. DATE	ALL DIMENSIONS ARE IN MILLIMETERS
CHKR		
P.E.		
M.E.	FIRST USED	
DSNR		12 J35P
UNSPECIFIED TOLERANCES ARE: WHOLE DIM (X) : 3 ONE-PLACE (X.X) : 1.5 TWO-PLACE (X.XX) : 0.50 ANGLE : 1°		MATERIAL: REFER TO ES0018 FOR FASTENER TIGHTENING GUIDELINES
THIRD ANGLE PROJECTION		
DO NOT SCALE DRAWING		TITLE: DRAINAGE SYSTEM INSTL
SHEET 1 OF 4		PART NO 177821
REF:		1

FOR
DRAINAGE
CALLOUTS
SEE DWG NO
116229-01-000

TOILET
160815-01-CHT
SCREW
087721-01-000 (8)



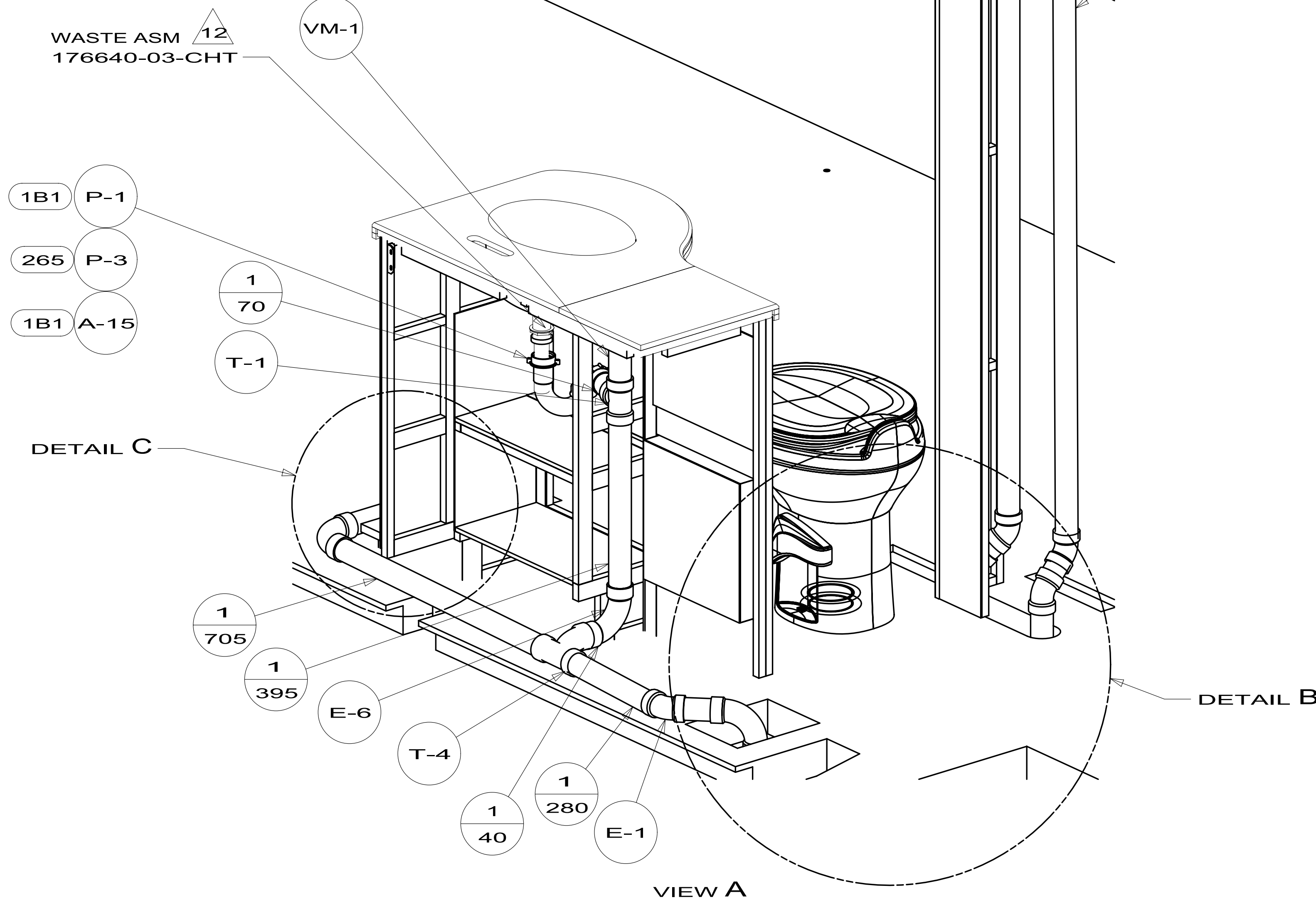
DETAIL B
(SHOWN W/OUT FLOOR & CABINETS)



DETAIL C
(SHOWN W/OUT FLOOR & CABINETS)

SHOWER INSTL
166788-13-000
STRAINER
066440-01-000
WASHER-RUBBER
127440-02-CHT
TAILPIECE
011069-02-000
NUT
130403-01-000

WASTE ASM
176640-03-CHT

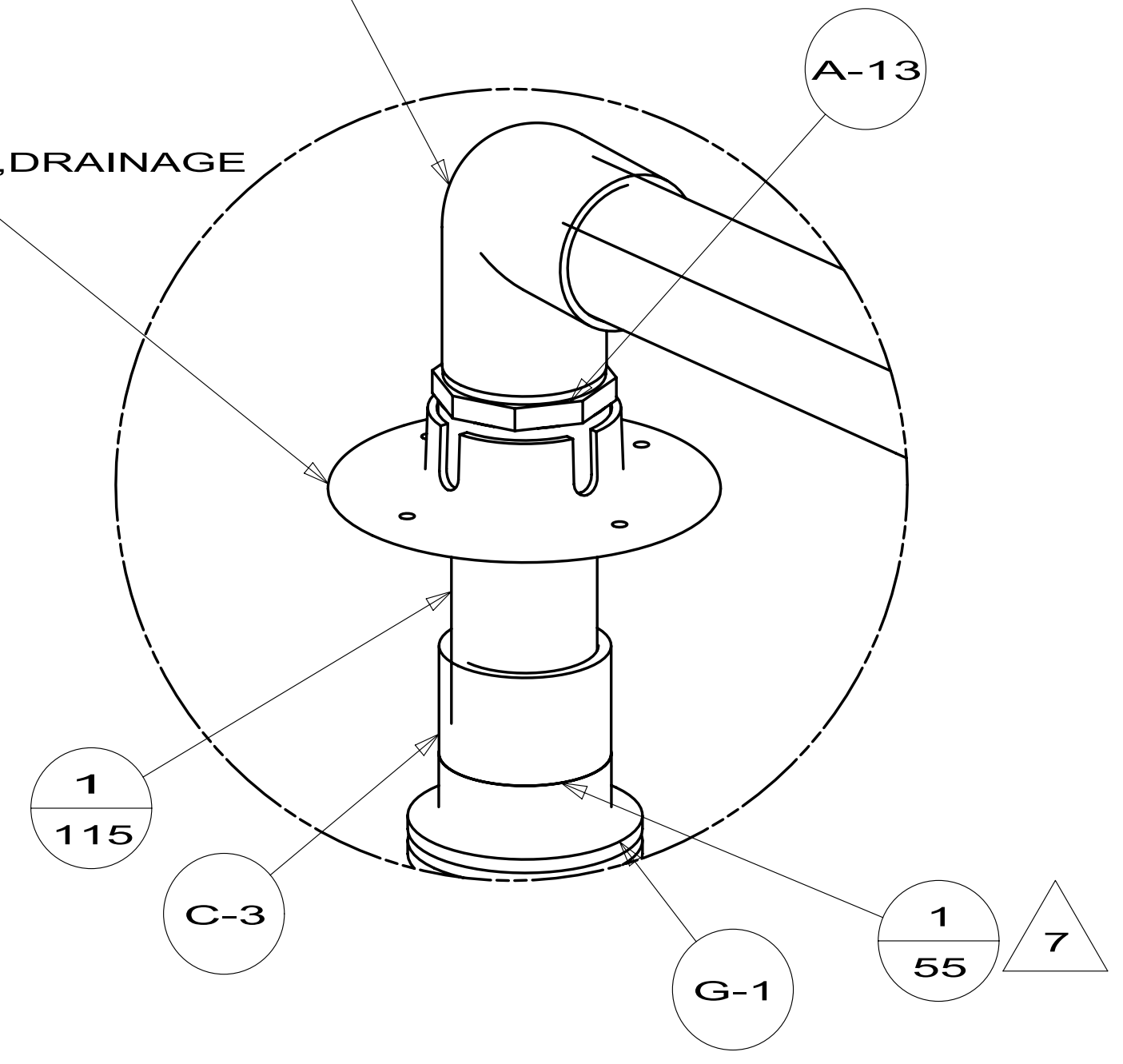


VIEW A

FIRST USED	12 J35P	
TITLE:	DO NOT SCALE DRAWING	
	DRAINAGE SYSTEM INSTL	
SHEET 2	PART NO 177821	REV

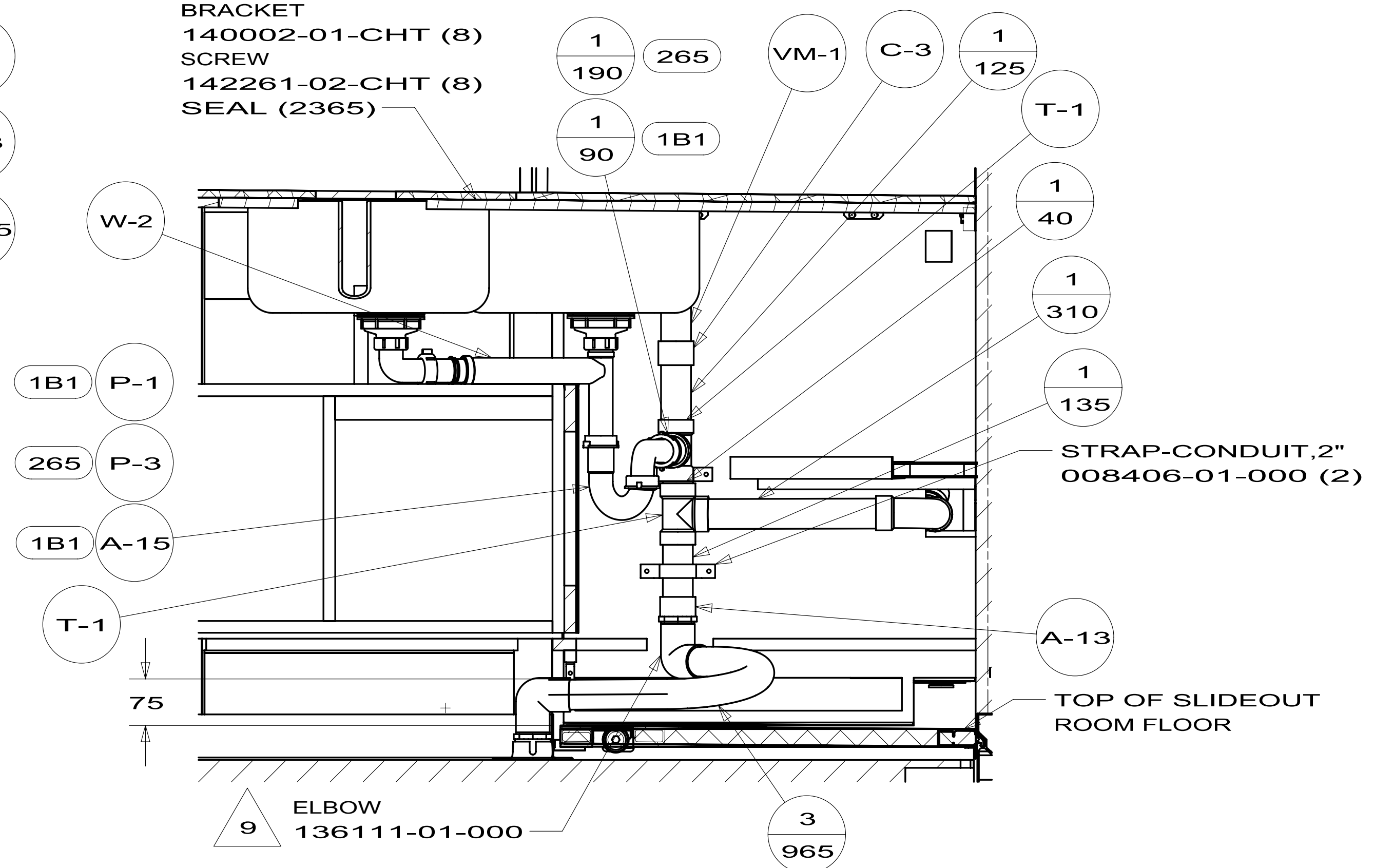
9 ELBOW
136111-01-000

FITTING-BULKHEAD, DRAINAGE
136656-01-CHT



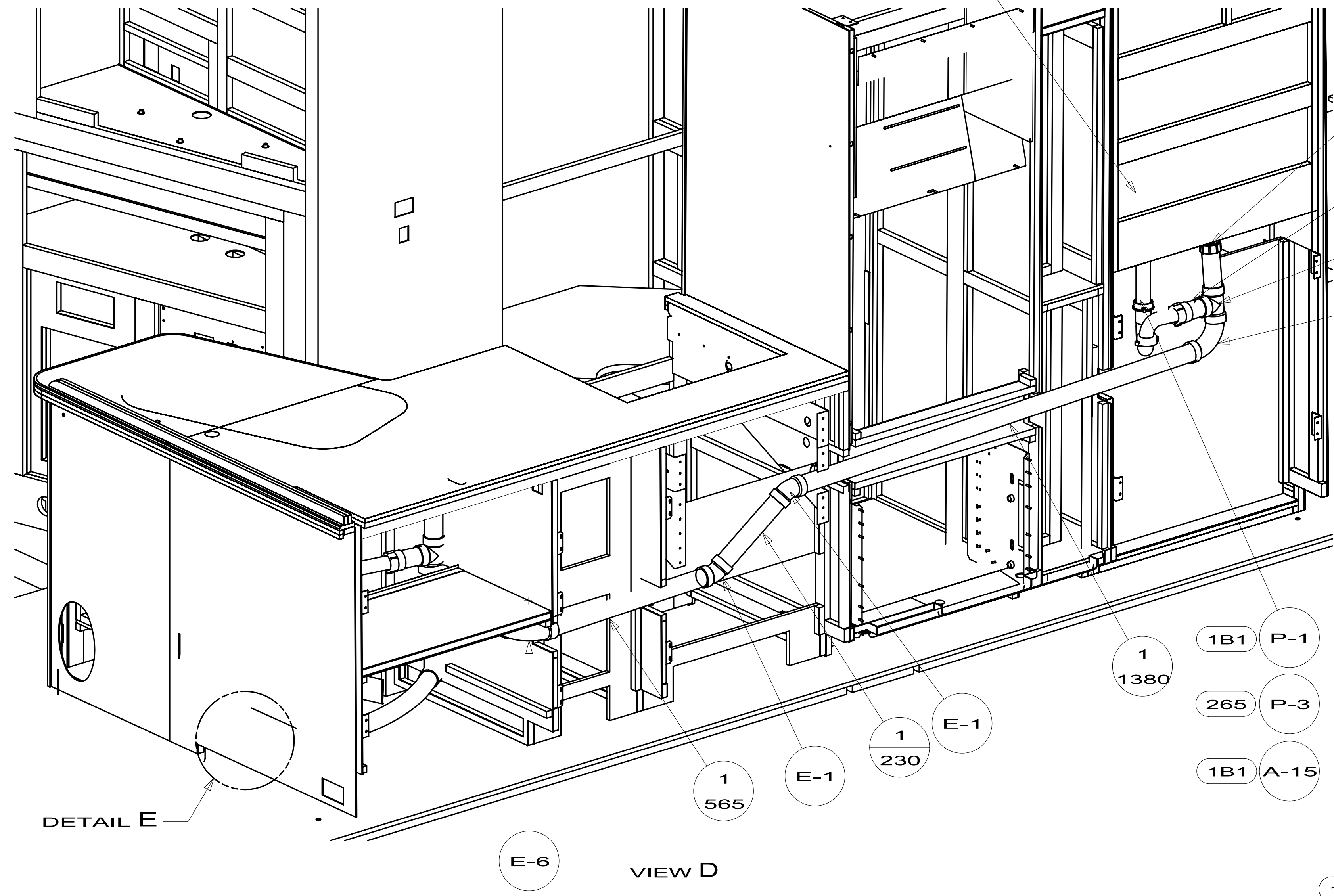
DETAIL E
(SHOWN W/OUT FLOOR & CABINETS)

SINK
173783-01-CHT
STRAINER
092303-01-000 (2)
BRACKET
140002-01-CHT (8)
SCREW
142261-02-CHT (8)
SEAL (2365)



SECTION F-F
(ROTATED)

54E 21M 21S
PIPE-STAND
130234-01-000



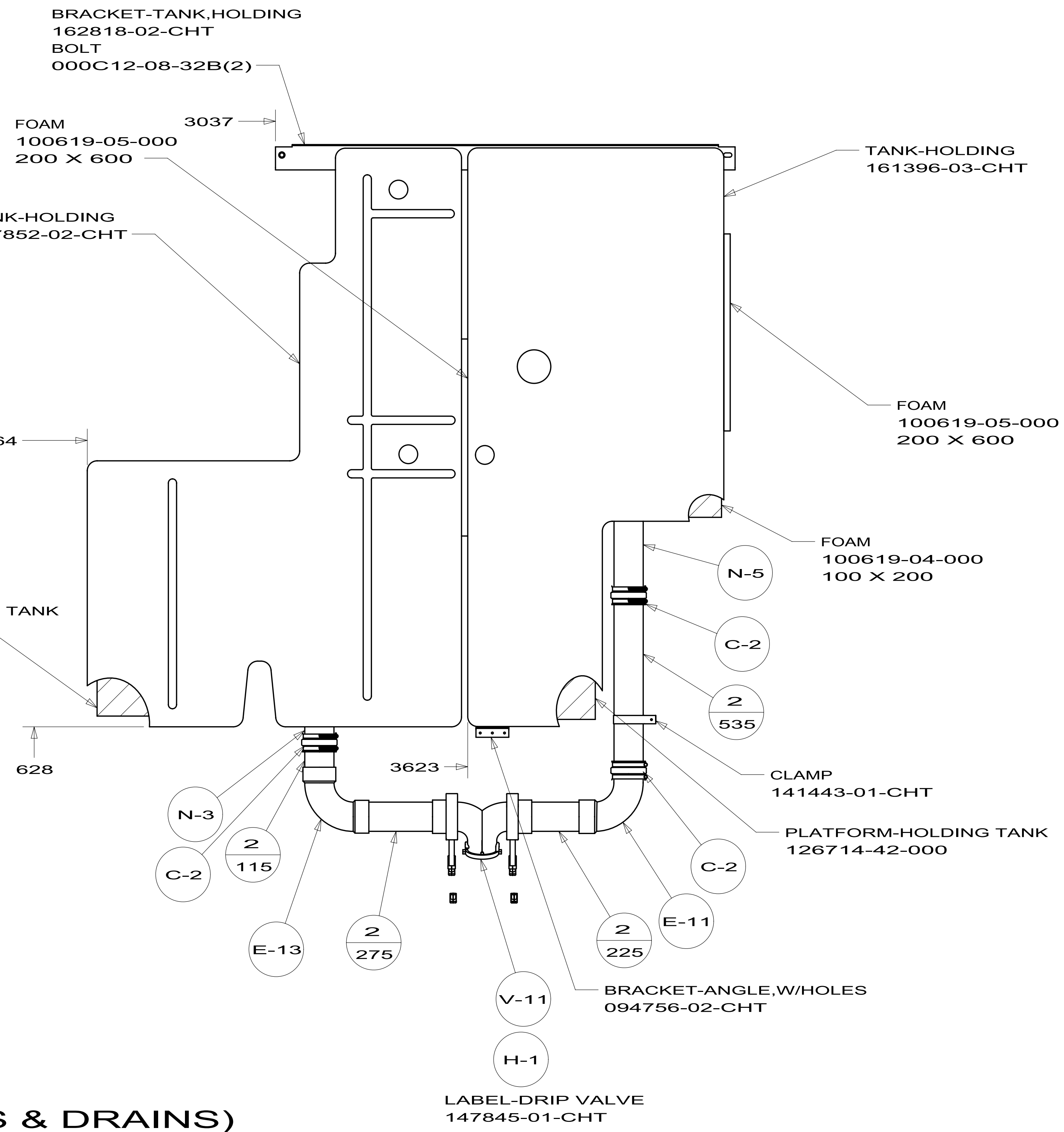
VIEW D

FIRST USED	12 J35P	
TITLE:	DO NOT SCALE DRAWING	
TITLE:	DRAINAGE SYSTEM INSTL	
SHEET 3	PART NO 177821	REV

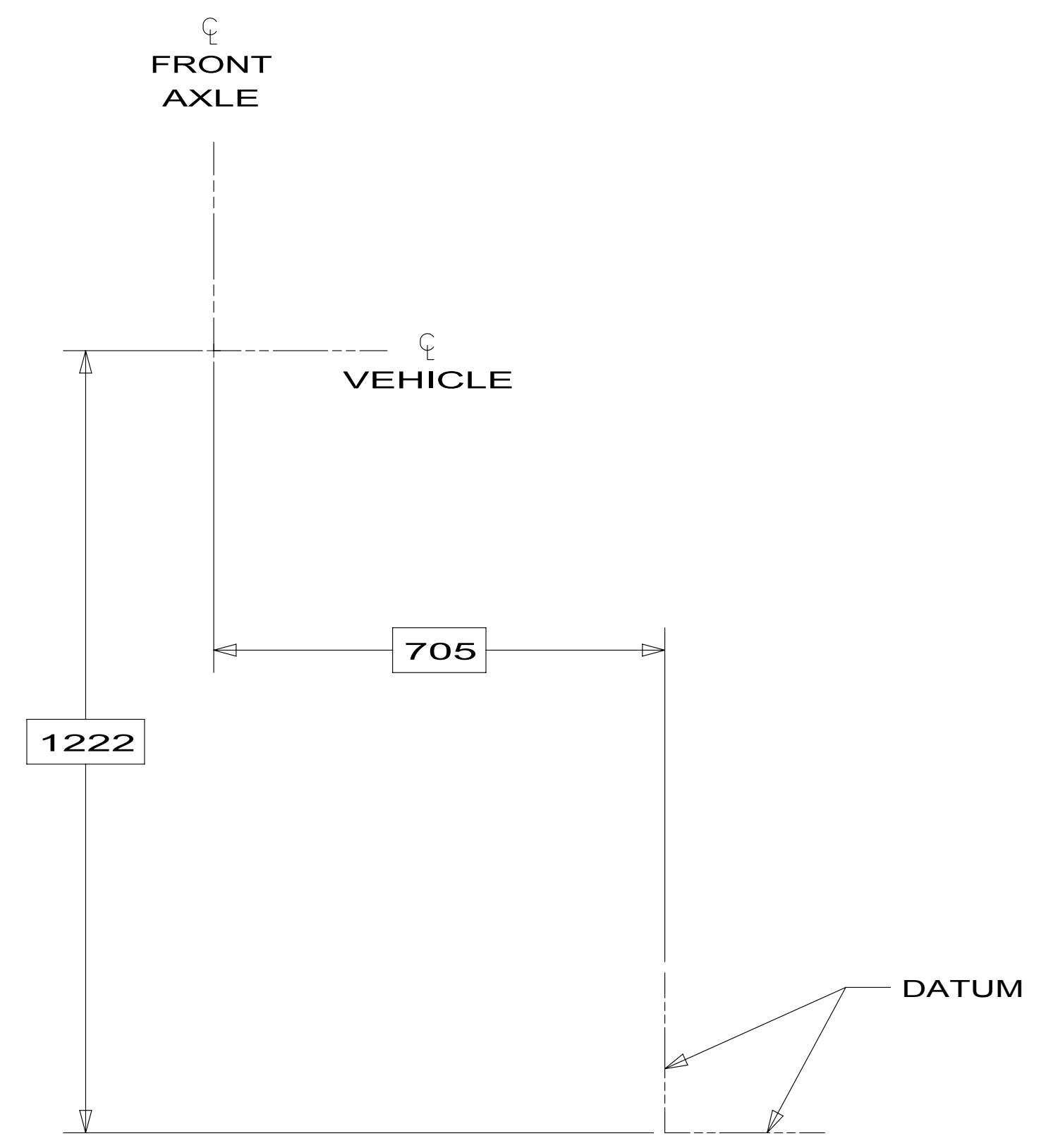
8 7 6 5 4 3 2 1

D
C
B
A

D
C
B
A



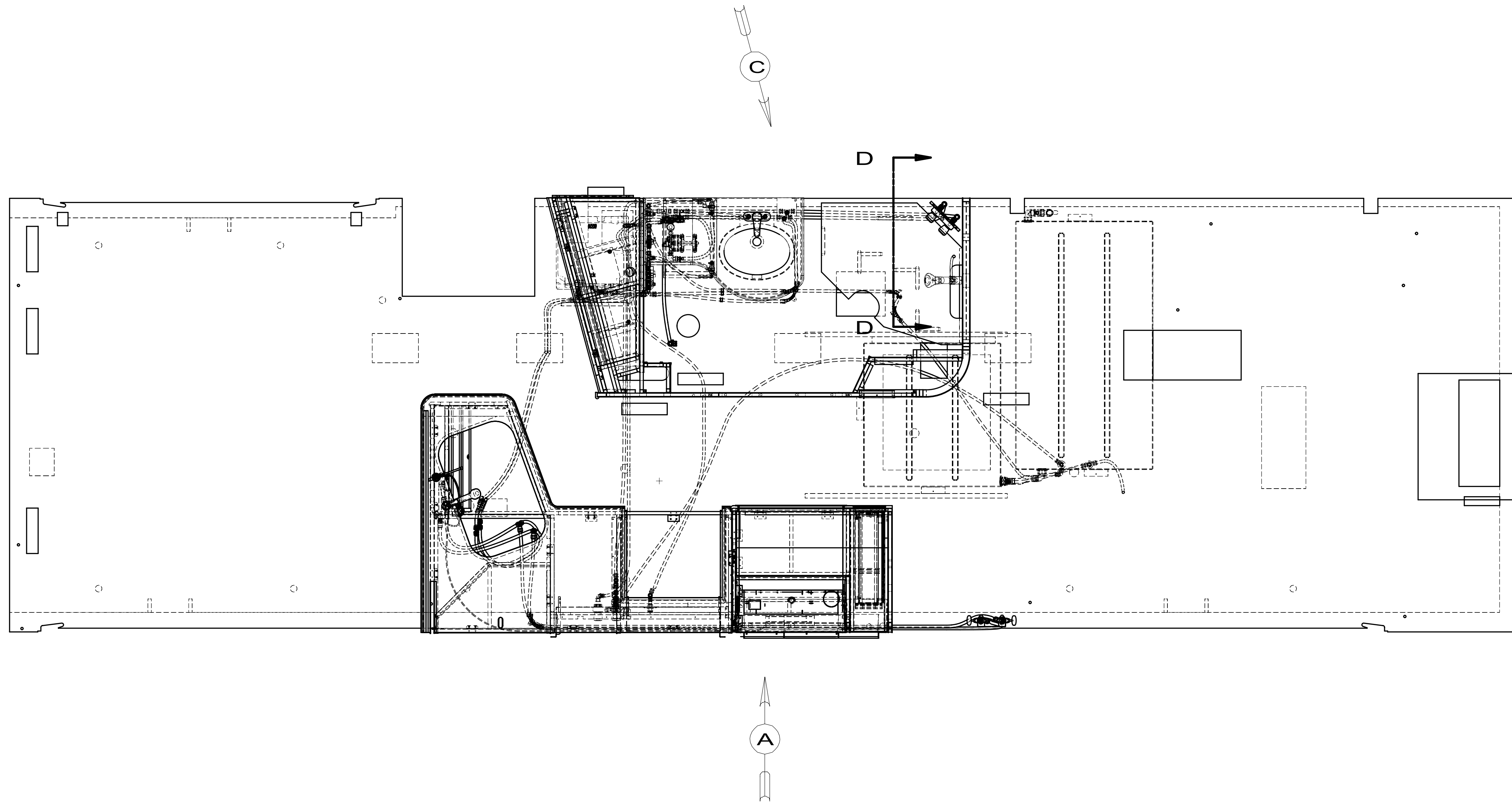
PLATFORM-HOLDING TANK
126714-08-000



TOP VIEW
(SHOWING ONLY TANKS & DRAINS)

8 7 6 5 4 3 2 1

FIRST USED	12 J35P		
TITLE:	DO NOT SCALE DRAWING		
	DRAINAGE SYSTEM INSTL		
SHEET 4	PART NO	177821	REV

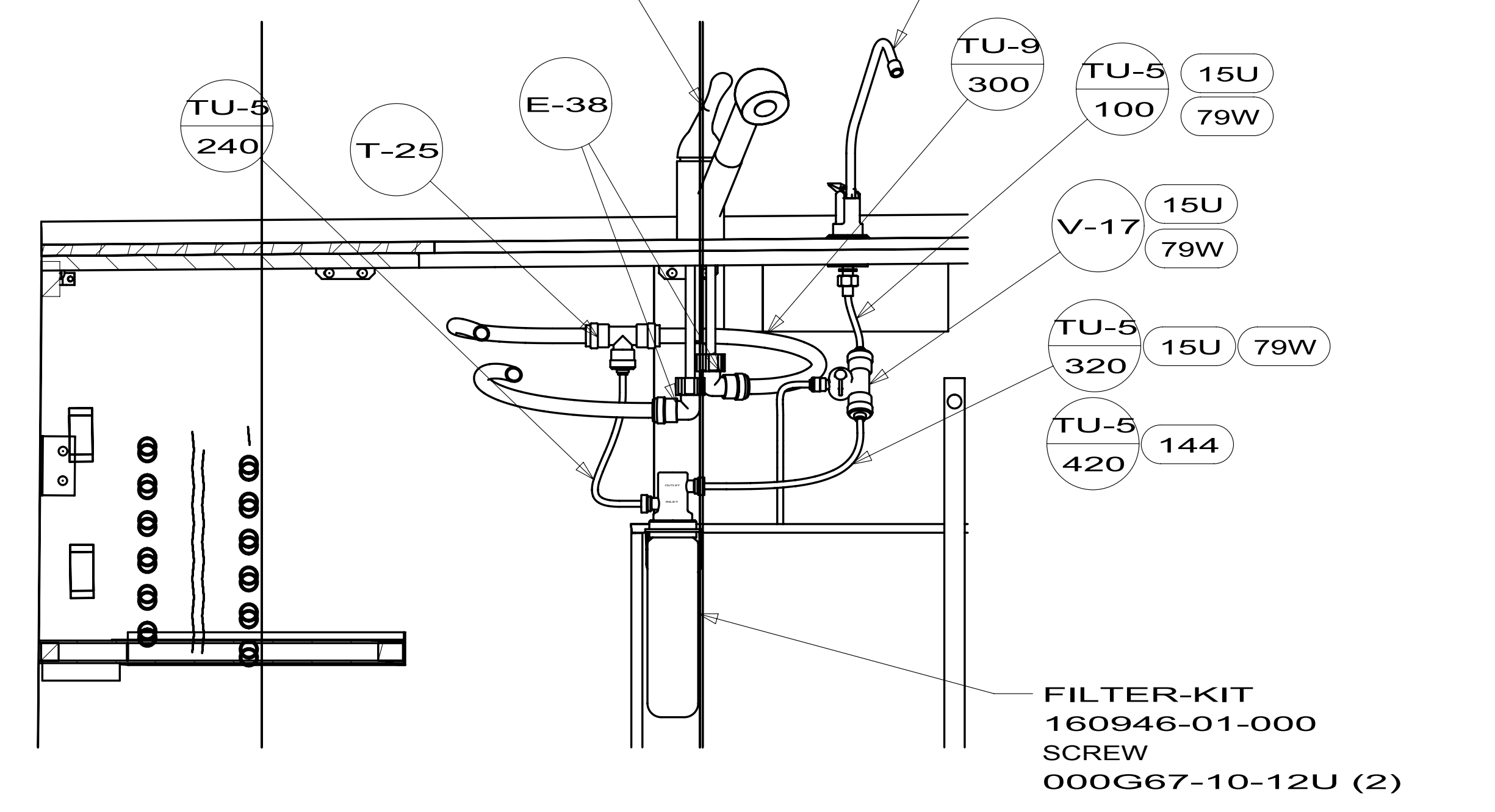
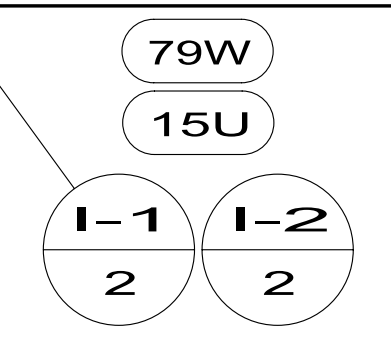
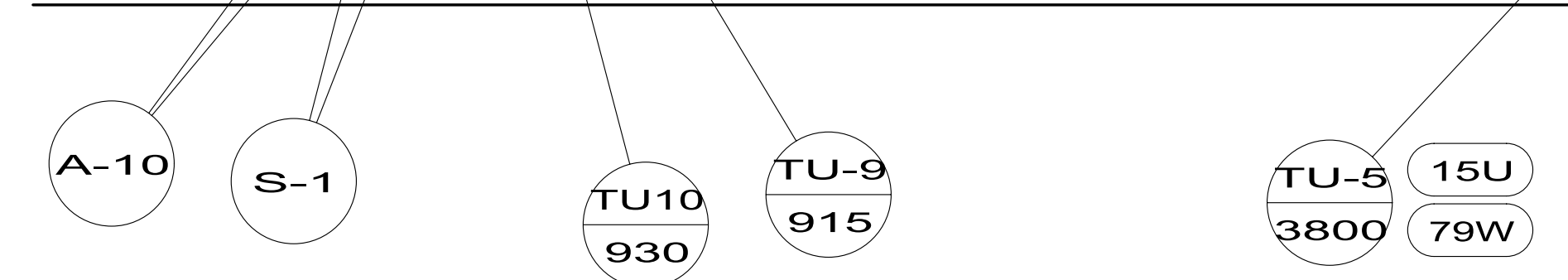
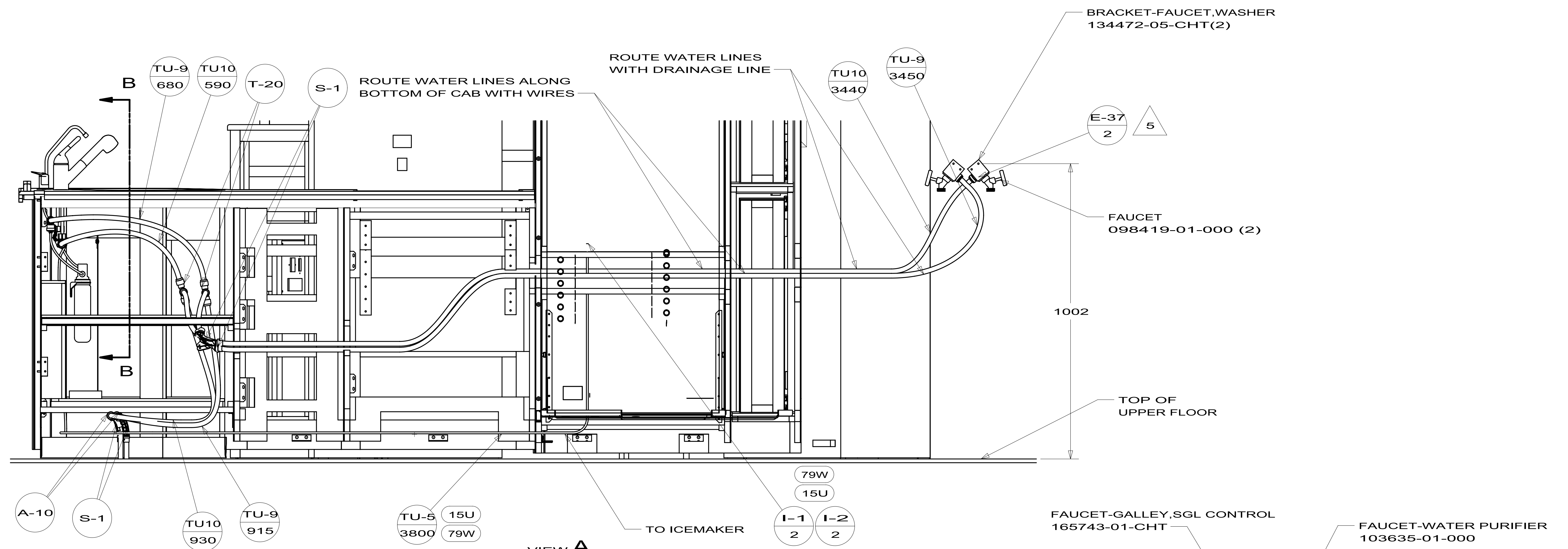


- 144 REFRIGERATOR-DOUBLE DOOR
- 79W REFRIGERATOR-4 DOOR
- 15U REFRIGERATOR/FRZR W/ICEMAKER

- NOTES:
- 6 USE IN PLACE OF SUPPLIED SCREWS TO ATTACH BRACKET TO WALL.
 - 5 ADD TEFLON TAPE 010405-02-000.
 - 4 ADD TEFLON TAPE 010405-01-000.
 - 3. ALL TUBING TO BE SECURED AT 1200 INTERVALS MAXIMUM WITH CLAMP 010495-01-000 AND SCREW 000G67-10-12B OR EQUIVALENT.
 - 2. TUBING TO BE INSTALLED WITH SUFFICIENT SLOPE TO PROVIDE DRAINAGE TO NEAREST VALVE.
 - 1. PLASTIC FITTINGS TO BE SEALED WITH SEALANT 084456-01-000.

		COPYRIGHT 2011 WINNEBAGO INDUSTRIES, INC.	
DTR	ORIG. DATE		
CHKR	ALL DIMENSIONS ARE IN MILLIMETERS		
P.E.			
M.E.	FIRST USED		
DSNR	12 J35P		
UNSPECIFIED TOLERANCES ARE:		MATERIAL:	
WHOLE DIM (X)	: 3		
ONE-PLACE (X.X)	: 1.5		
TWO-PLACE (X.XX)	: 0.50		
ANGLE	: 1°		
THIRD ANGLE PROJECTION			
DO NOT SCALE DRAWING		REFER TO ES0018 FOR FASTENER TIGHTENING GUIDELINES	
TITLE: WATER SYSTEM INSTL			
SHEET 1 OF 4	PART NO	177824	REV
REF:	1		

FOR
WATER
CALLOUTS
SEE DWG NO
116230-01-000



FIRST USED	12 J35P		
TITLE:	DO NOT SCALE DRAWING		
TITLE:	WATER SYSTEM INSTL		
SHEET 2	PART NO	177824	REV

PANEL-SHOWER
167738-02-CHT

5 E-38

TU10
1825

TU-9
1890

R-4

R-4

T-20
2

TU-9
545

TU10
525

VIEW C

E-21

DETAIL J

FAUCET-LAV
165730-01-CHT

E-21

BREAKER-VACUUM
125697-04-000
MUST BE MOUNTED ABOVE
TOILET FLOOD LEVEL
CHECK VALVE
125697-03-000 5

A-12

348 SHOWER-HAND HELD
176668-01-CHT

200

F-2

SECTION D-D
(ROTATED)

TO TOILET

TU10
3450

TU-9
1540

E-38

U-2

CH-3

TU-8
900

S-1

S-1

T-22

T-22

TU-9
40

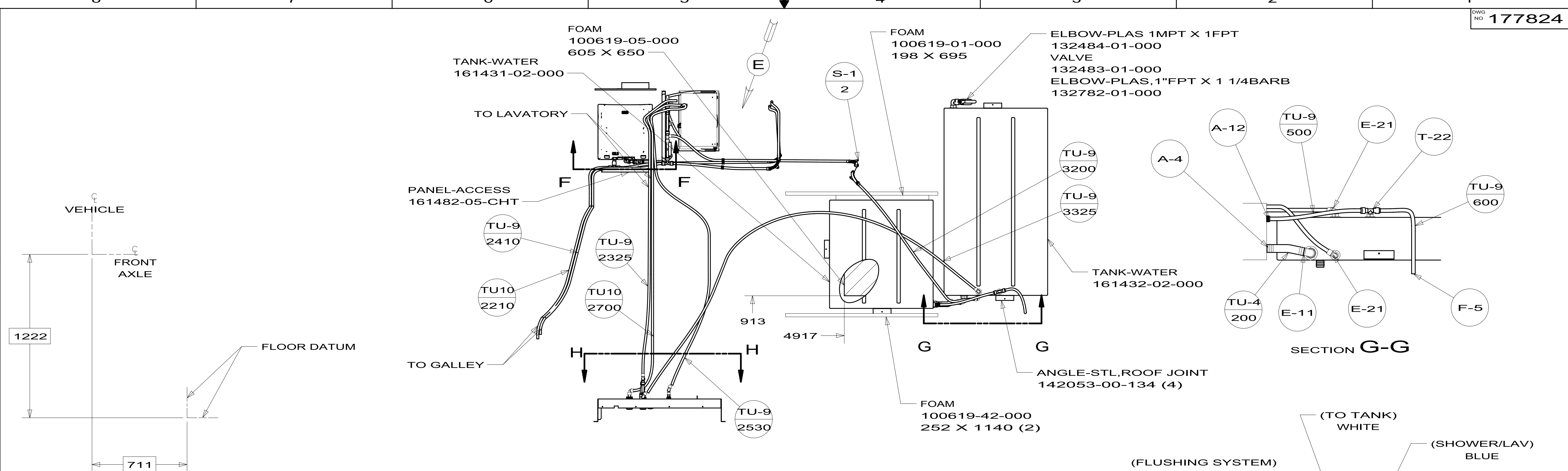
T-26

U-2

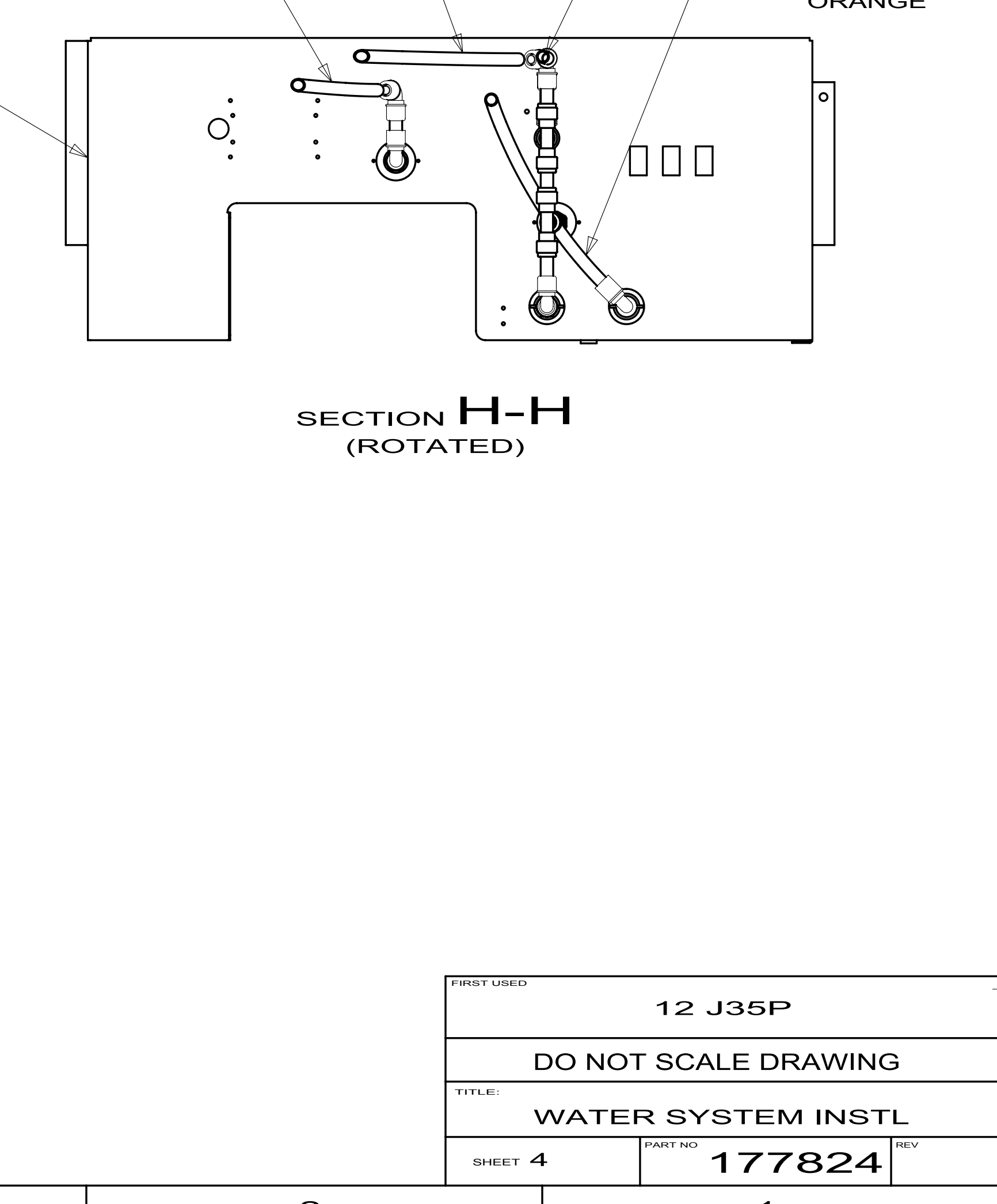
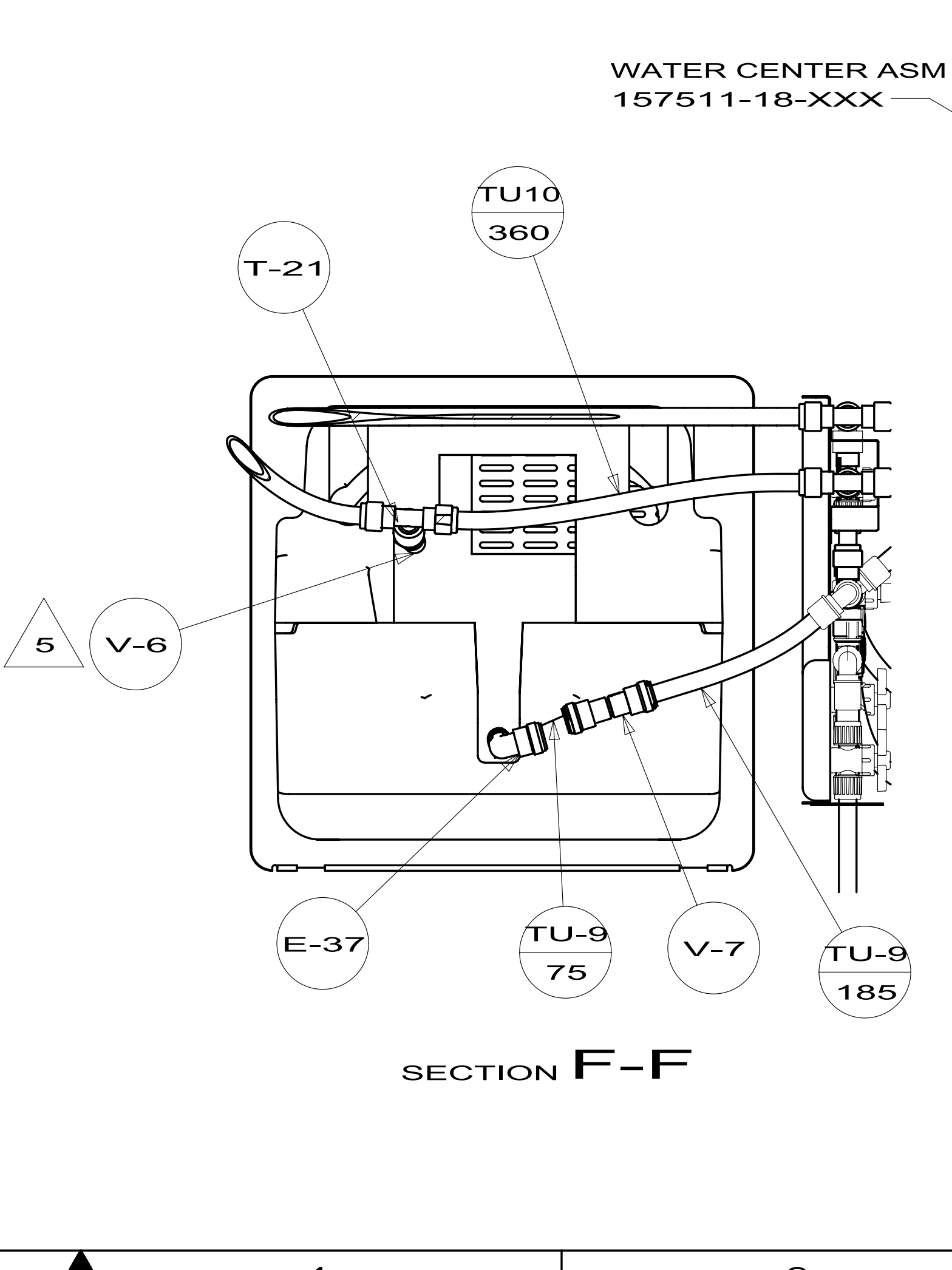
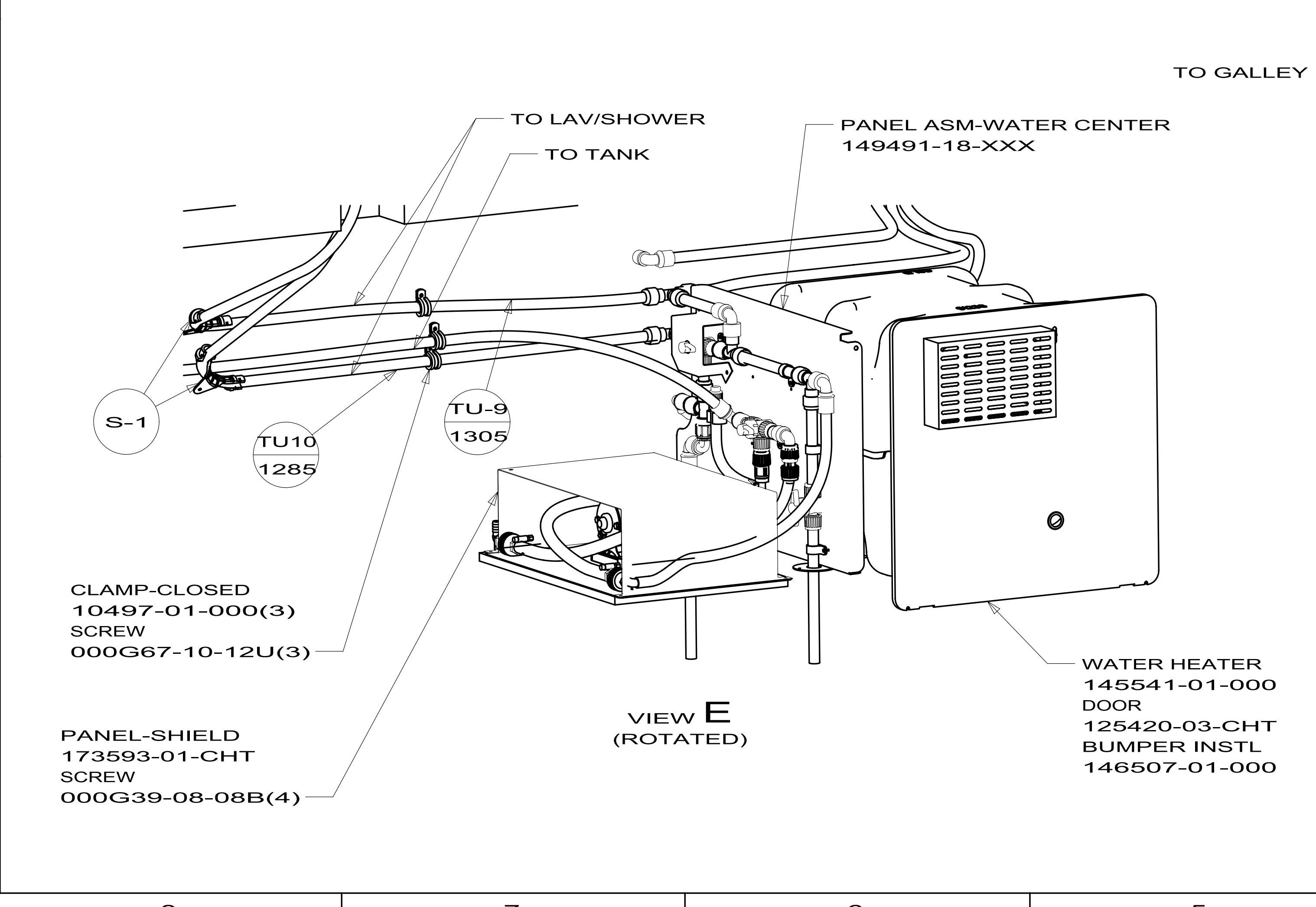
CH-3

DETAIL J
(SHOWN W/OUT CABINET)

FIRST USED	12 J35P		
TITLE:	DO NOT SCALE DRAWING		
	WATER SYSTEM INSTL		
SHEET 3	PART NO	177824	REV



TOP VIEW LINES UNDER FLOOR SHOWN ONLY



FIRST USED	12 J35P	
DO NOT SCALE DRAWING		
TITLE: WATER SYSTEM INSTL		
SHEET 4	PART NO 177824	REV