

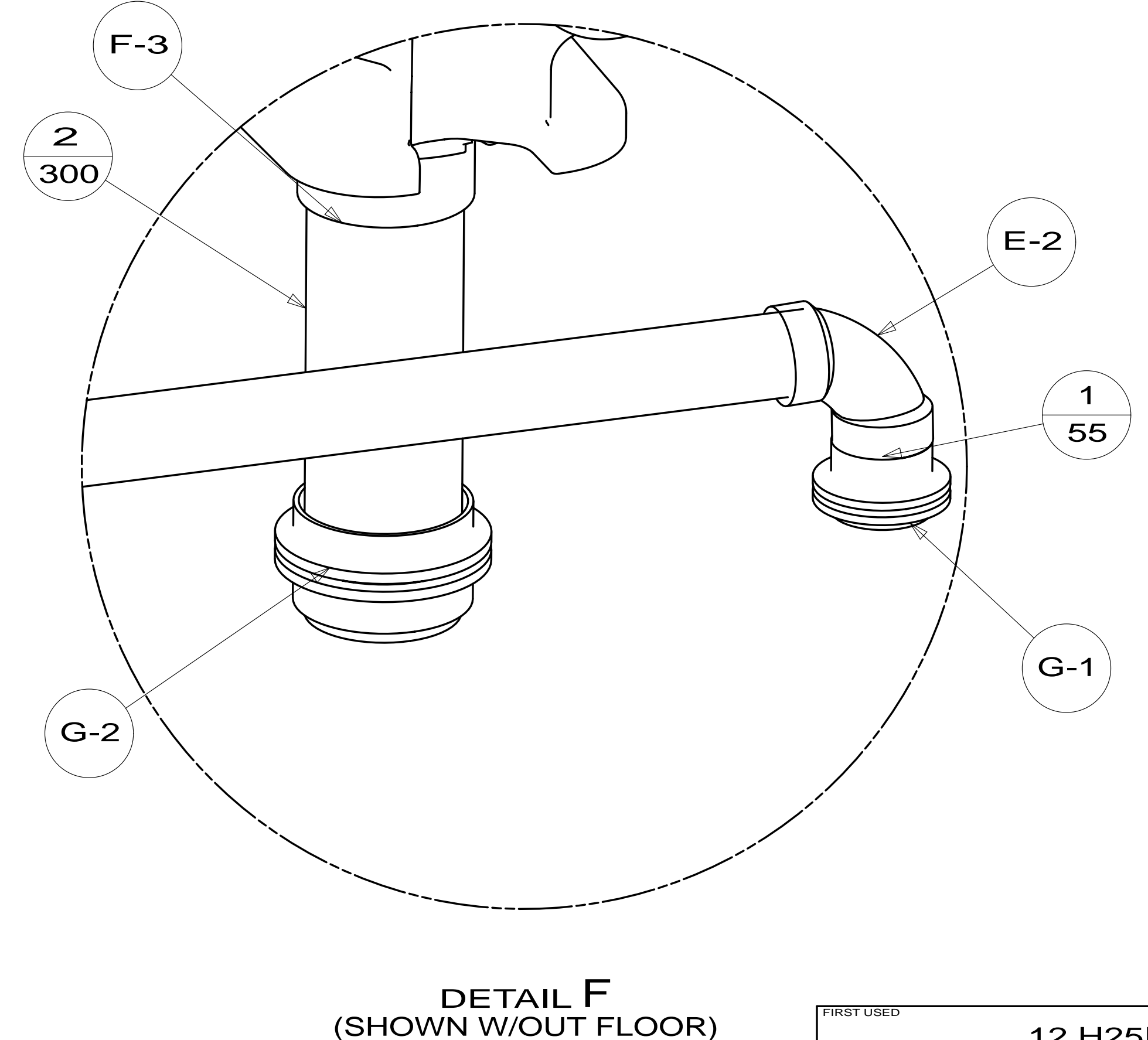
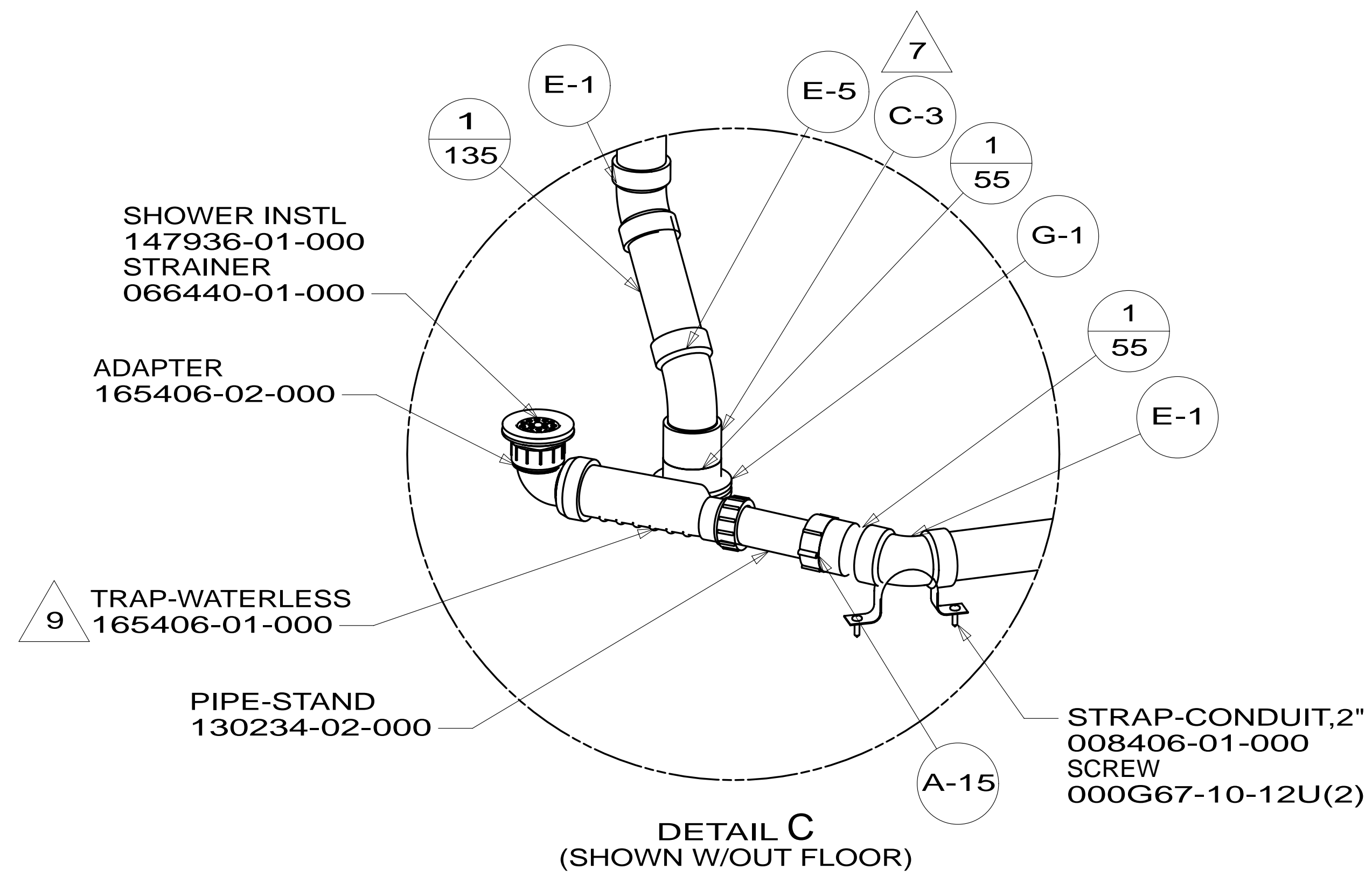
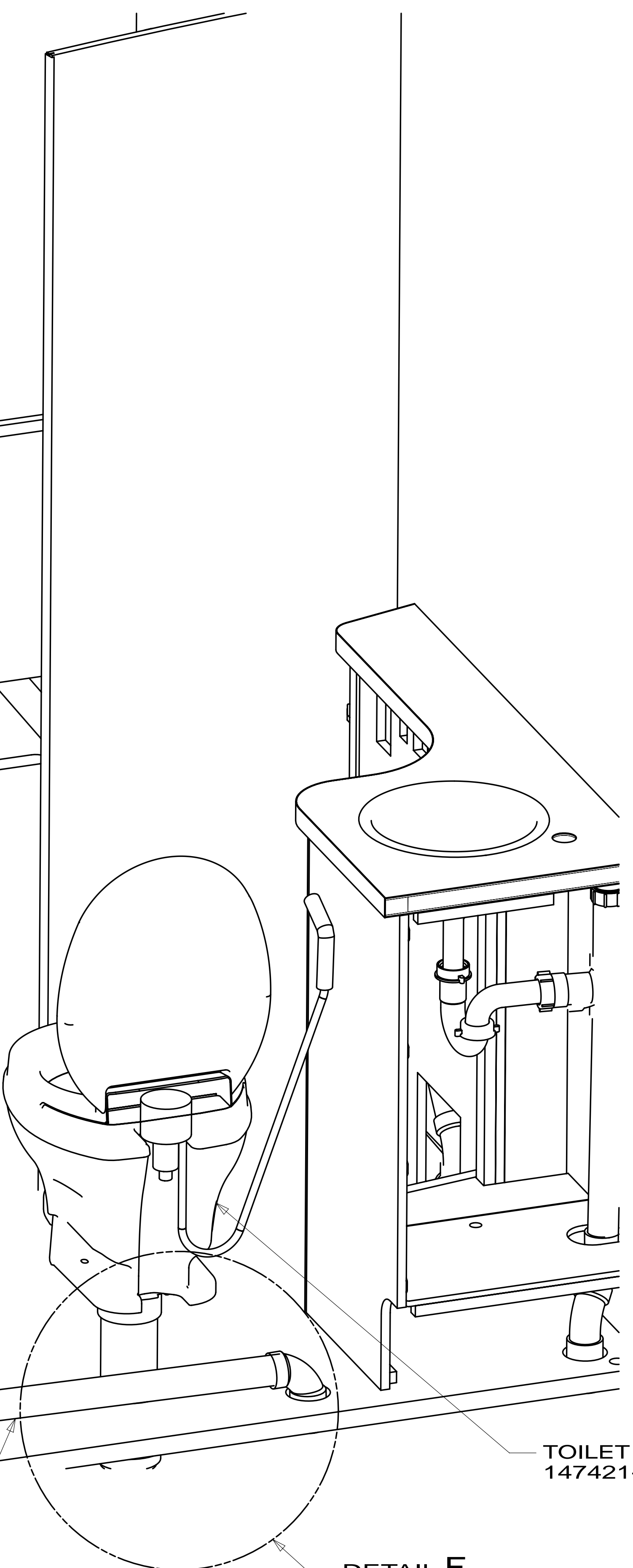
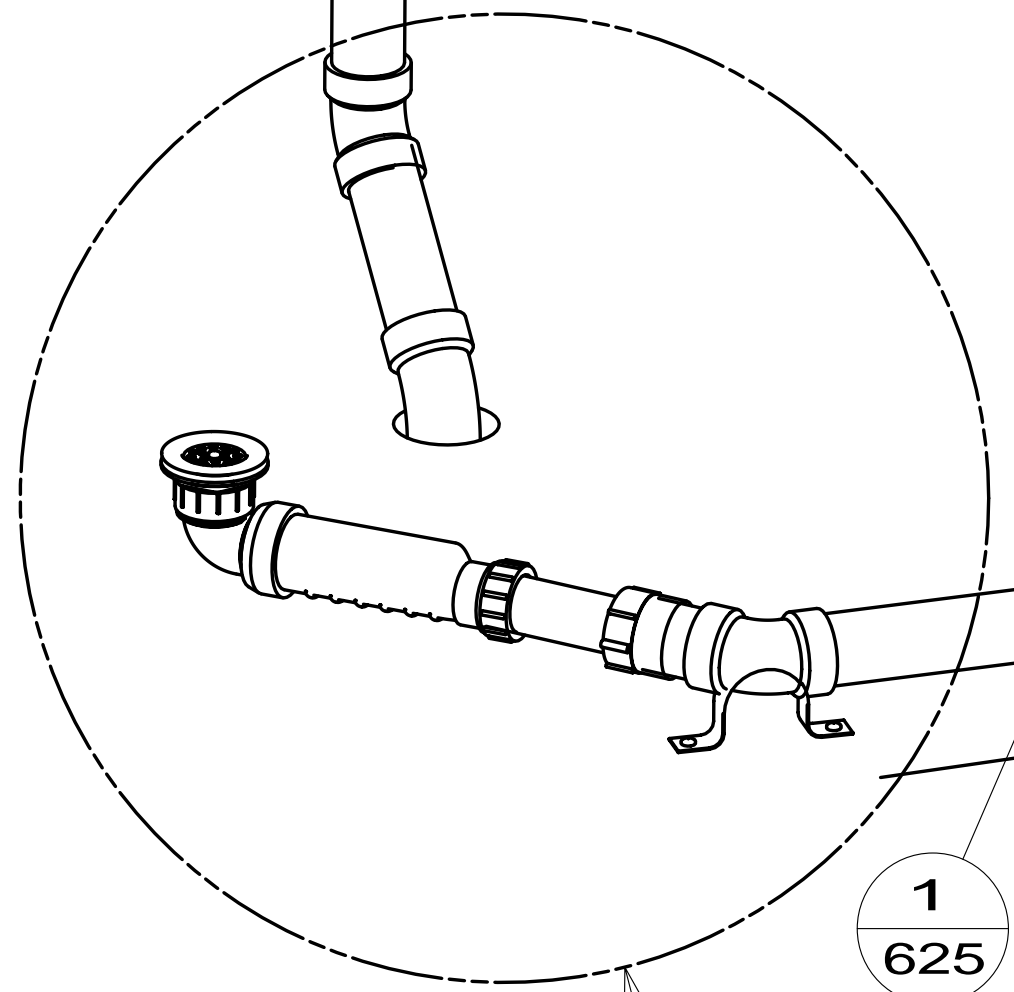
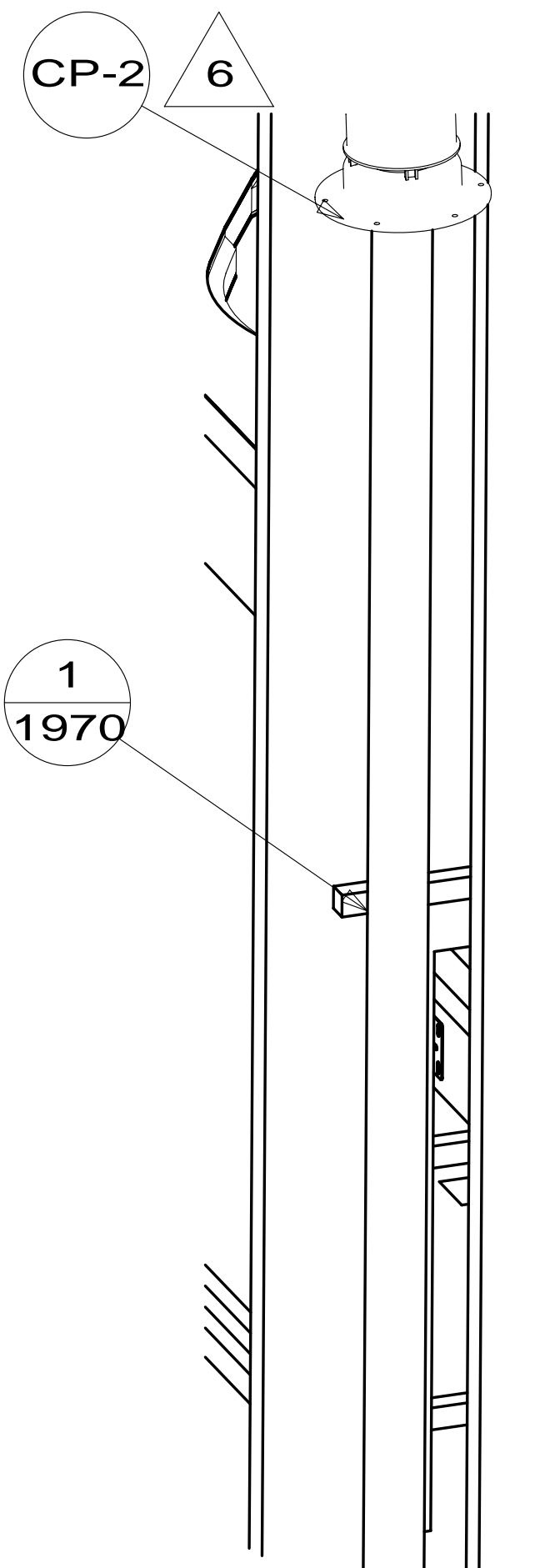
- 10 PREP THE SURFACE PER MANUFACTURERS INSTRUCTIONS, BEFORE APPLYING THE HEATING PAD.
- 9 WATERLESS P-TRAP MUST BE INSTALLED WITH THE RIBS POINTING DOWN
- 8 U-LOCKS TO BE INSTALLED BEFORE THE FRAME ASM IS BOLTED DOWN TO THE CHASSIS AND BEFORE THE SEAL PLANES ARE INSTALLED.
- 7 SECURE VENT PIPE TO FLOOR WITH CLAMP 062401-02-000 (2), SCREW 000G67-10-12B (2), BRACKET 136878-01-CHT (2).
- 6 VENT PIPE MUST PROJECT 51 MIN AND 64 MAX ABOVE ROOF FOR PROPER FIT AND FUNCTION. ADD S-1 (116666-01-CHT SEAL-VENT PIPE) AROUND PIPE ON ROOF BEFORE VENT CAP IS INSTALLED.
5. SEAL AROUND SHOWER WITH SILICONE.
4. SECURE DRAINAGE PIPES TO CABINET USING WIRE TIE 108046-02-000, AND SCREW 000G67-10-12B AT INTERVALS OF NOT MORE THAN 4 FEET APART.
3. ALL PIPE AND FITTINGS TO BE ASSEMBLED WITH SOLVENT 004020-01-000 (USA), 004020-02-000 (CAN)
2. SLOPE OF TRAP ARM MUST BE 6 PER 305 mm.
1. SLOPE OF HORIZONTAL PIPING TO BE MINIMUM OF 3 PER 305 mm.

- 1JD DRAINAGE SYSTEM-HEATED-W/O
- 23T DRAINAGE SYSTEM-HEATED
- 464 TOILET
- 265 CODES/STANDARDS-CSA/CMVSS
- 1B1 CODES/STANDARDS USA

		COPYRIGHT 2012 WINNEBAGO INDUSTRIES, INC.	
DFT-ORIG	ORIG. DATE	ALL DIMENSIONS ARE IN MILLIMETERS	
CHKR			
P.E.			
M.E.	FIRST USED		
DSNR		12 H25R	
UNSPECIFIED TOLERANCES ARE:		MATERIAL:	
WHOLE DIM (X)	: 3		
ONE-PLACE (X.X)	: 1.5		
TWO-PLACE (X.XX)	: 0.50		
ANGLE	: 1°		
THIRD ANGLE PROJECTION			
DO NOT SCALE DRAWING		REFER TO ES0018 FOR FASTENER TIGHTENING GUIDELINES	
TITLE: DRAINAGE SYSTEM INSTL			
SHEET 1 OF 4	PART NO	179459	REV
REF:	1	21-May-2012	

FOR DRAINAGE CALLOUTS SEE DWG NO 116229-01-000

NOTES:



FIRST USED	12 H25R	
DO NOT SCALE DRAWING		
TITLE: DRAINAGE SYSTEM INSTL		
SHEET 2	PART NO 179459	REV

SINK-LAVATORY
 151679-01-CHT
 SEAL
 091255-02-000(A/R)
 STRAINER
 163569-01-000
 TAILPIECE
 011069-05-000
 NUT
 130403-01-000
 WASHER
 127440-02-CHT

1B1 P-1
 265 P-3
 1B1 A-15

1B1 1/60
 265 1/145

T-1

1/435

DETAIL E

1/675

STRAP-CONDUIT,2"
 008406-01-000
 SCREW
 000G67-10-12U(2)

VIEW B

STRAP-CONDUIT,2"
 008406-01-000
 SCREW
 000G67-10-12U(2)

1/2765

BRACKET-DRAIN,SUPPORT
 156189-01-CHT
 LUMBER
 052372-F0-062
 SCREW
 000G67-10-12U(5)

SINK-GALLEY
 178817-01-CHT
 SEAL
 091255-03-000(A/R)
 STRAINER
 163569-01-000
 TAILPIECE
 011069-05-000

P-1 1B1

P-3 265

A-15 1B1

1/240 1B1

1/335 265

E-6

1/465

T-1

E-6

VM-1

1/145

6 CP-2

E-1

1/160

1/85

E-1

1/1100

E-5

E-5

C-3

1/55

G-1

E-5

T-1

7

1/55

G-1

DETAIL E
 (SHOWN W/OUT FLOOR)

FIRST USED	12 H25R	
TITLE:	DO NOT SCALE DRAWING	
TITLE:	DRAINAGE SYSTEM INSTL	
SHEET 3	PART NO 179459	REV

STRAP-W/HOLES
166245-04-CHT
SCREW
000G39-08-12U(2)

PAD-HEATER
133972-04-000

BRACKET-TANK MOUNT
167936-03-CHT
U-LOCK
151437-12-CHT
BOLT
000C12-06-20U(2)
NUT
000D39-06-00U(2)

BRACKET-TANK MOUNT
167936-05-CHT
U-LOCK
151437-12-CHT
BOLT
000C12-06-20U(2)
NUT
000D39-06-00U(2)

BRACKET-TANK MOUNT
167936-03-CHT
U-LOCK
151437-12-CHT
BOLT
000C12-06-20U(2)
NUT
000D39-06-00U(2)

BRACKET-TANK MOUNT
167936-05-CHT
U-LOCK
151437-12-CHT
BOLT
000C12-06-20U(2)
NUT
000D39-06-00U(2)

PAD-HEATER
133972-04-000

STRAP-W/HOLES
166245-04-CHT
SCREW
000G39-08-12U(2)

VALVE
129147-01-000

BOTTOM VIEW

FOAM
168508-27-000
168508-28-000

FOAM
120050-28-000

TANK-HOLDING
173100-02-000

TANK-HOLDING
172748-02-000

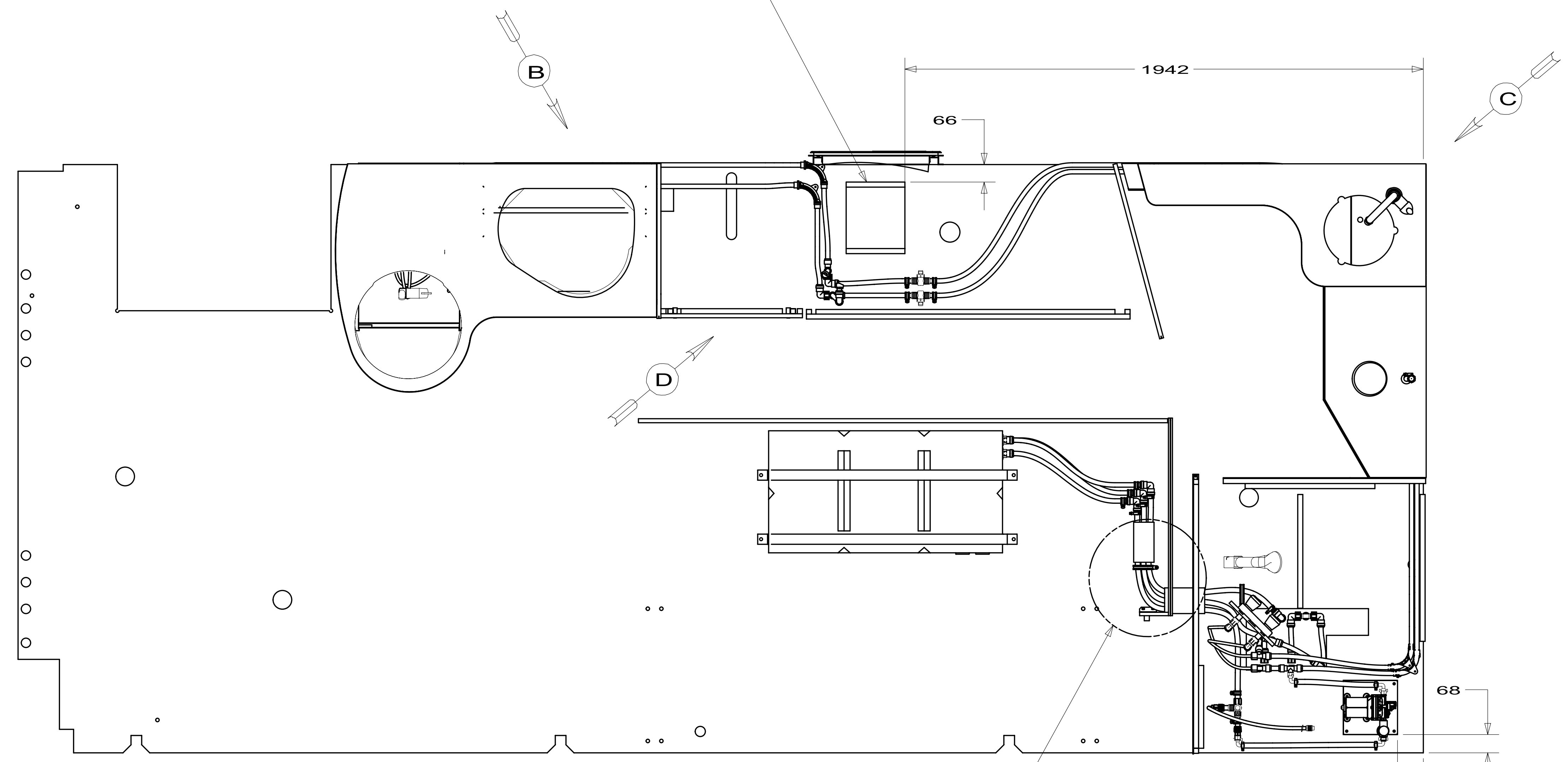
HANDLE-EXTENSION
062419-11-000
062419-05-000
062419-06-000
BOLT
000G18-08-10B(2)
NUT
000D65-08-00B(2)

VIEW G

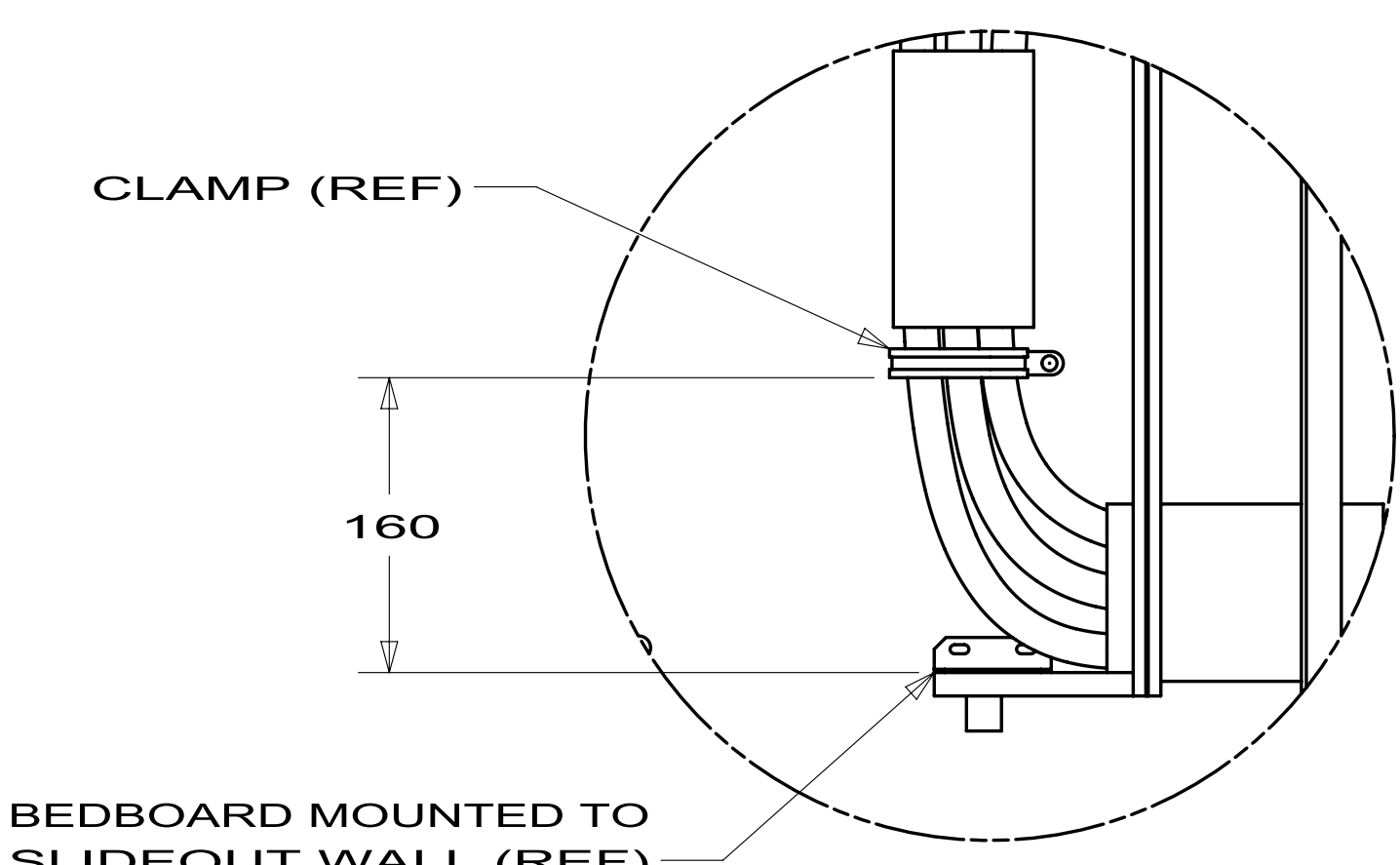
CABLE ASM
062421-11-000

FIRST USED	12 H25R
TITLE:	DO NOT SCALE DRAWING
TITLE:	DRAINAGE SYSTEM INSTL
SHEET 4	PART NO 179459 REV

WATER HEATER PLATFORM (REF)
(DIMENSIONS TAKEN FROM
THE EDGES OF THE FLOOR ASM)



DETAIL J



BEDBOARD MOUNTED TO
SLIDEOUT WALL (REF)

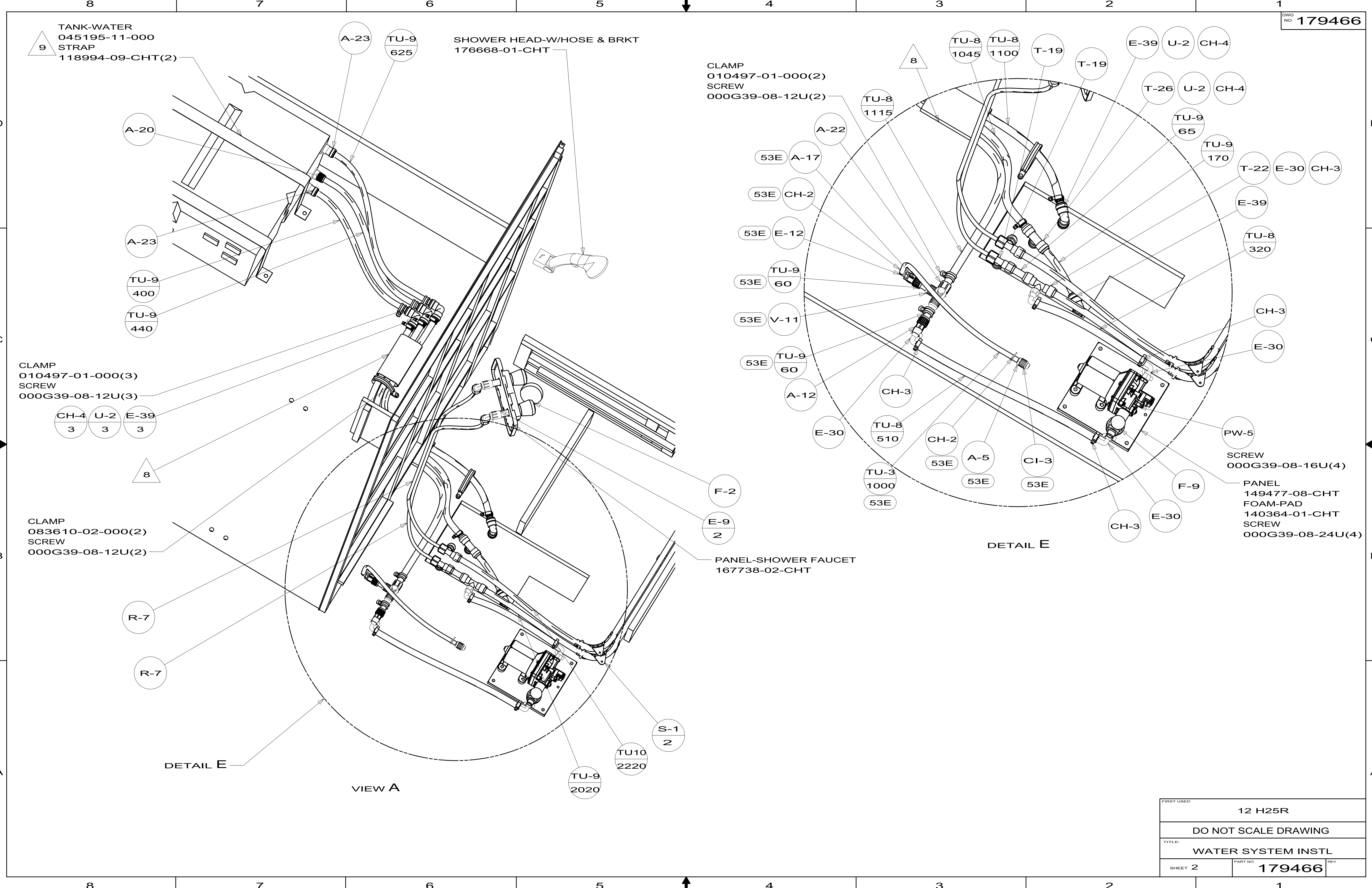
- 10 INSTALL BETWEEN MOUNTING PLATE AND RETAINING NUTS.
- 9 WATER TANK MOUNTING STRAP BOLTS AND NUTS ARE CALLED OUT ON SLIDEOUT ASM DRAWING.
- 8 ENCASE FLEX WATER LINES IN CONVOLUTED TUBE (178782-00-150)
- 7 INSTALL CONNECTOR WITH TAPERED END AWAY FROM FAUCET.
- 6 ADD TEFLON TAPE 010405-03-000.
- 5 ADD TEFLON TAPE 010405-02-000.
- 4 ADD TEFLON TAPE 010405-01-000.
- 3 ALL TUBING TO BE SECURED AT 1200 INTERVALS MAXIMUM WITH CLAMP 010495-01-000 AND SCREW 000G67-10-12B OR EQUIVALENT.
- 2. TUBING TO BE INSTALLED WITH SUFFICIENT SLOPE TO PROVIDE DRAINAGE TO NEAREST VALVE.
- 1. PLASTIC FITTINGS TO BE SEALED WITH SEALANT 084456-01-000.

NOTES:

- 1J4 EXT WASH STATION - WITHOUT
- 64R EXTERIOR WASH STATION
- 53E WATER SYS WINTERIZATION PKG
- 53B WTR HTR-6GAL ELECTRIC/LP GAS
- 501 WATER PURIFIER WITHOUT
- 29B WATER PURIFIER

		COPYRIGHT 2011 WINNEBAGO INDUSTRIES, INC.
DTR	ORIG. DATE	
CHKR		ALL DIMENSIONS ARE IN MILLIMETERS
P.E.		
M.E.	FIRST USED	
DSNR		12 H25R
UNSPECIFIED TOLERANCES ARE: WHOLE DIM (X) : 3 ONE-PLACE (X.X) : 1.5 TWO-PLACE (X.XX) : 0.50 ANGLE : 1°		MATERIAL:
THIRD ANGLE PROJECTION		
DO NOT SCALE DRAWING		REFER TO ES0018 FOR FASTENER TIGHTENING GUIDELINES
TITLE: WATER SYSTEM INSTL		
SHEET 1 OF 4	PART NO 179466	REV
REF:	1	6/10/2011

FOR
WATER
CALLOUTS
SEE DWG NO
116230-01-000



TANK-WATER
045195-11-000
STRAP
118994-09-CHT(2)

SHOWER HEAD-W/HOSE & BRKT
176668-01-CHT

CLAMP
010497-01-000(2)
SCREW
000G39-08-12U(2)

CLAMP
010497-01-000(3)
SCREW
000G39-08-12U(3)

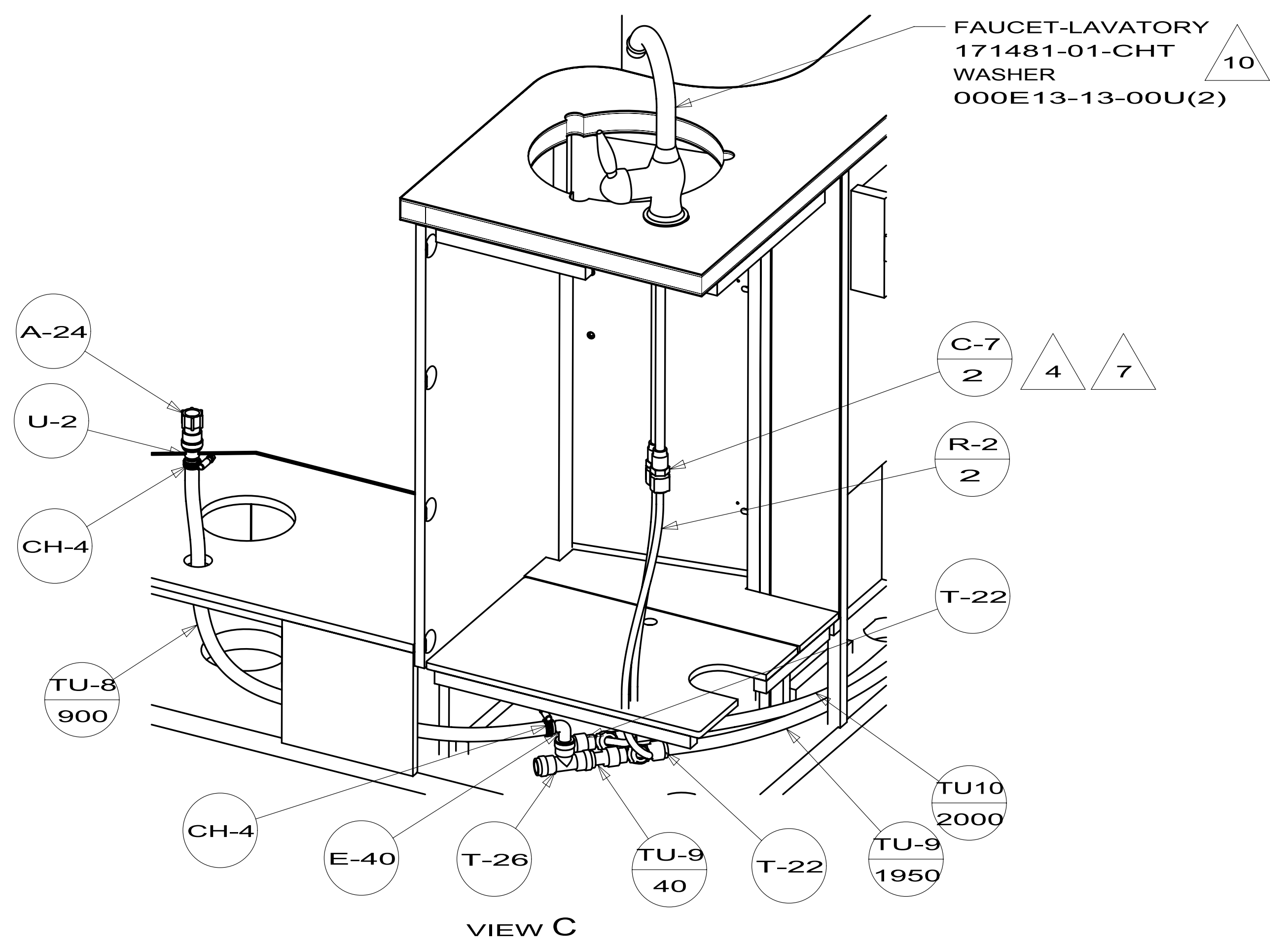
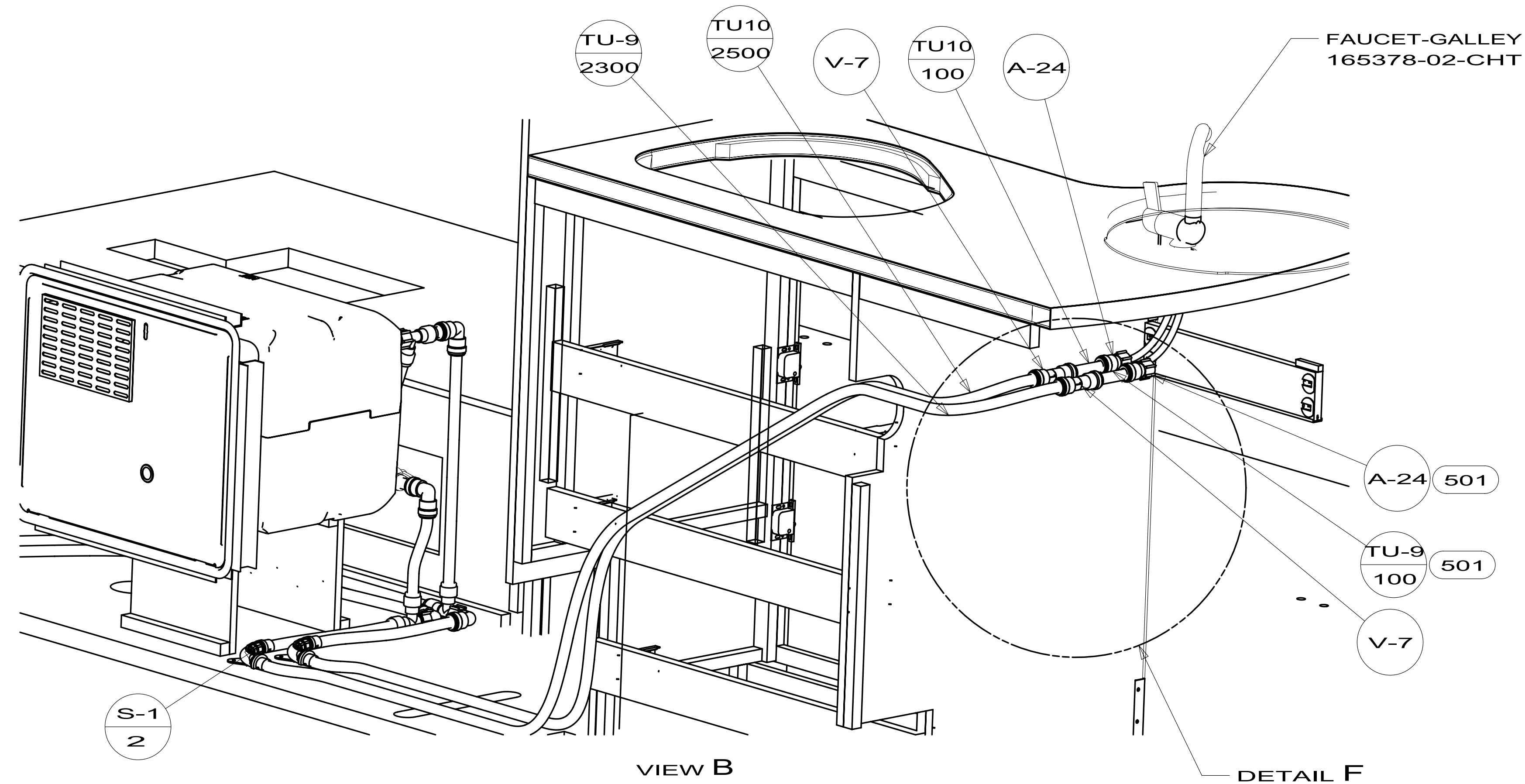
CLAMP
083610-02-000(2)
SCREW
000G39-08-12U(2)

PANEL-SHOWER FAUCET
167738-02-CHT

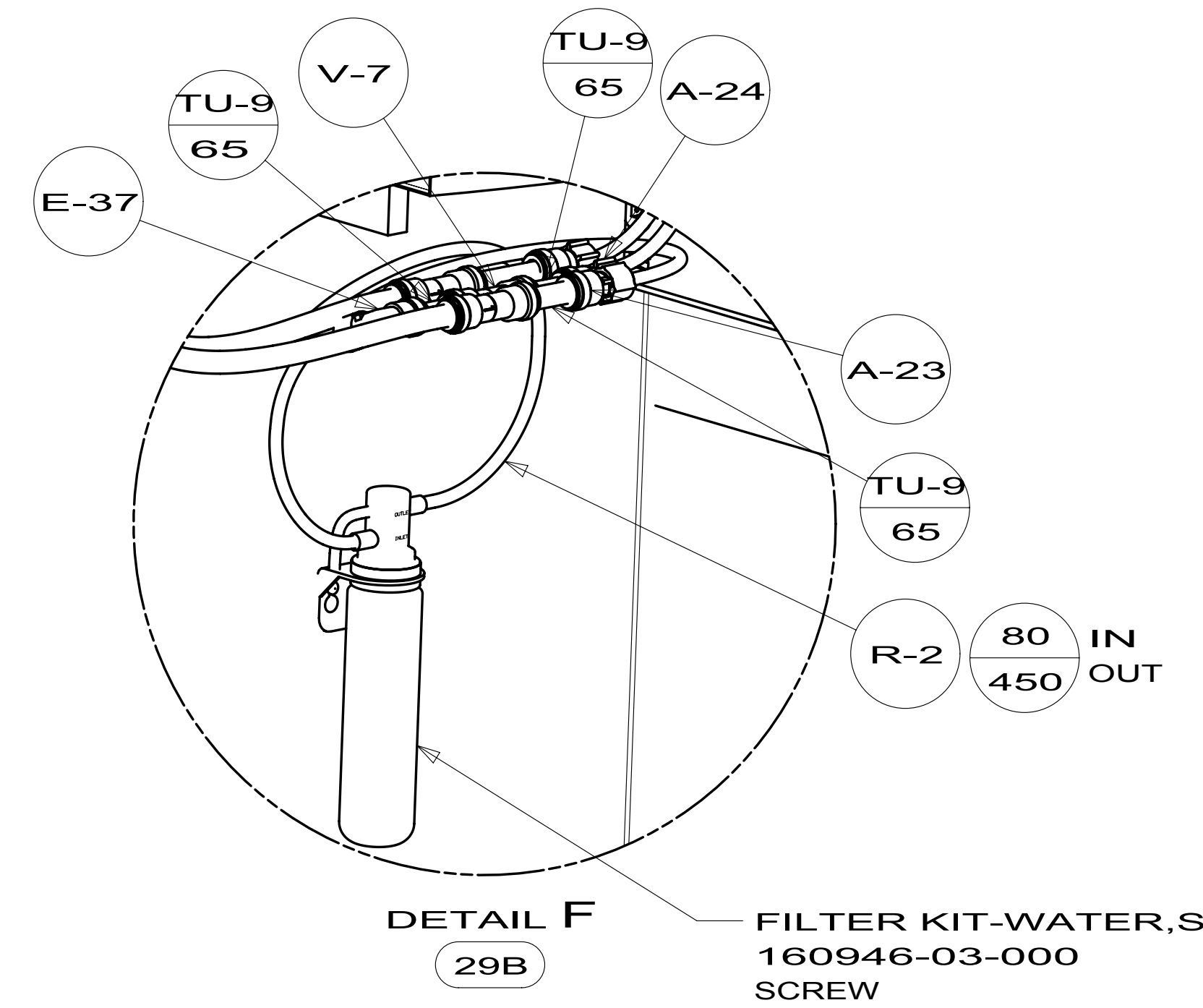
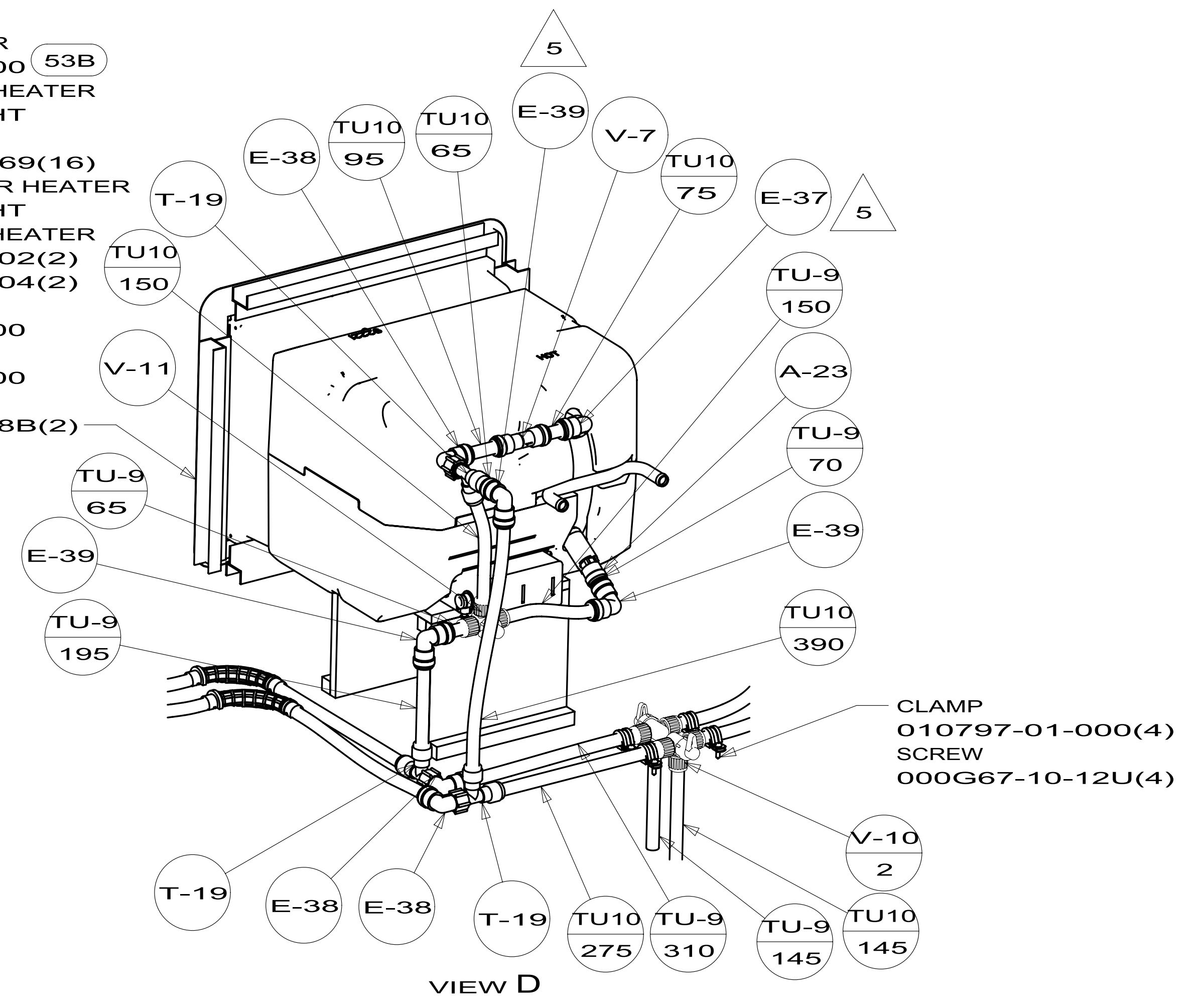
SCREW
000G39-08-16U(4)

PANEL
149477-08-CHT
FOAM-PAD
140364-01-CHT
SCREW
000G39-08-24U(4)

FIRST USED	12 H25R	
TITLE:	DO NOT SCALE DRAWING	
TITLE:	WATER SYSTEM INSTL	
SHEET 2	PART NO	179466
	REV	

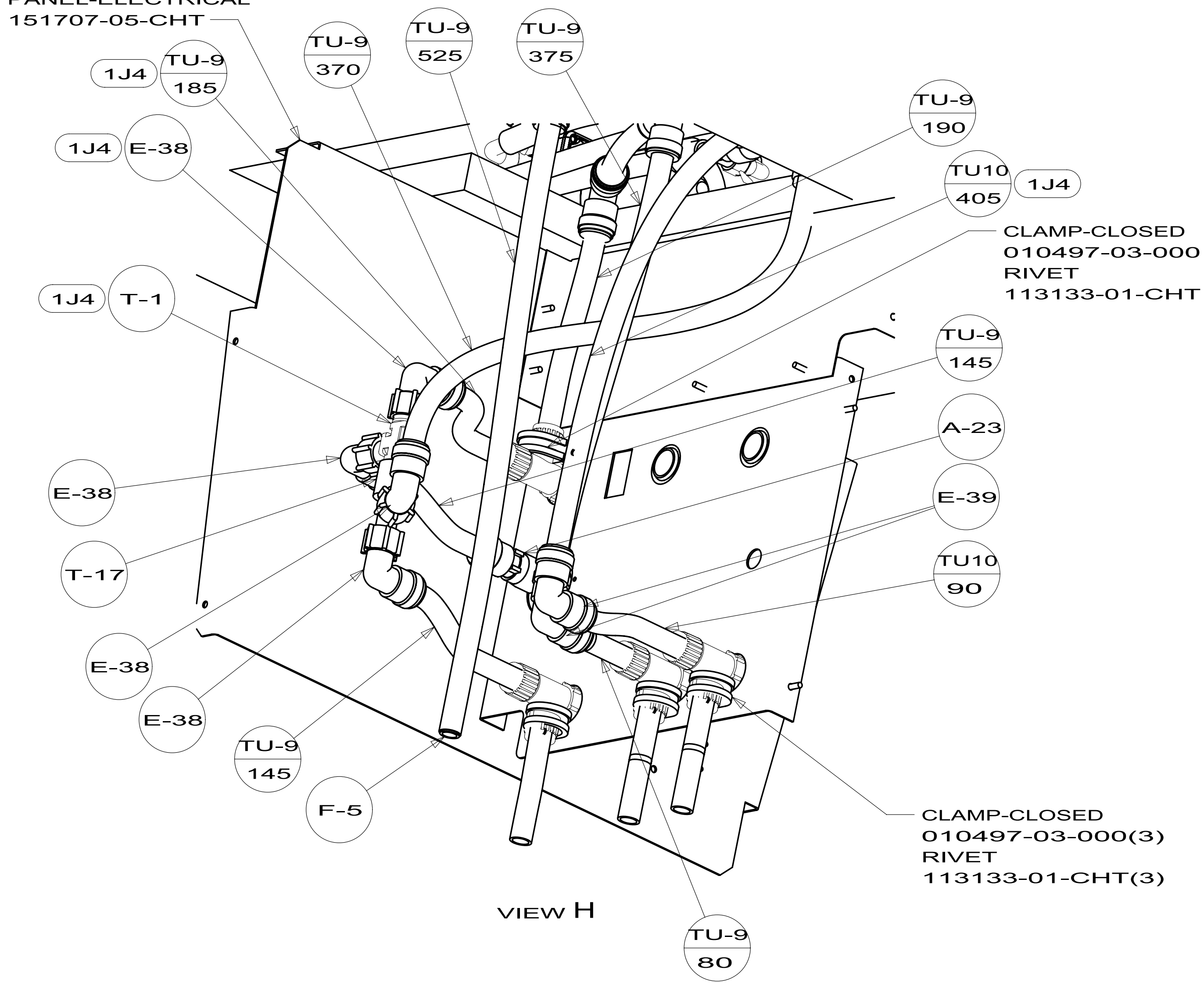


- WATER HEATER 145541-02-000 (53B)
- DOOR-WATER HEATER 125420-06-CHT
- SCREW 000G39-10-169(16)
- FLANGE-WATER HEATER 152239-01-CHT
- EXTR-WATER HEATER 165959-51-002(2)
- 165959-51-004(2)
- PLATFORM 144200-06-000
- CABLE ASM 076764-03-000
- SCREW 000G11-06-08B(2)

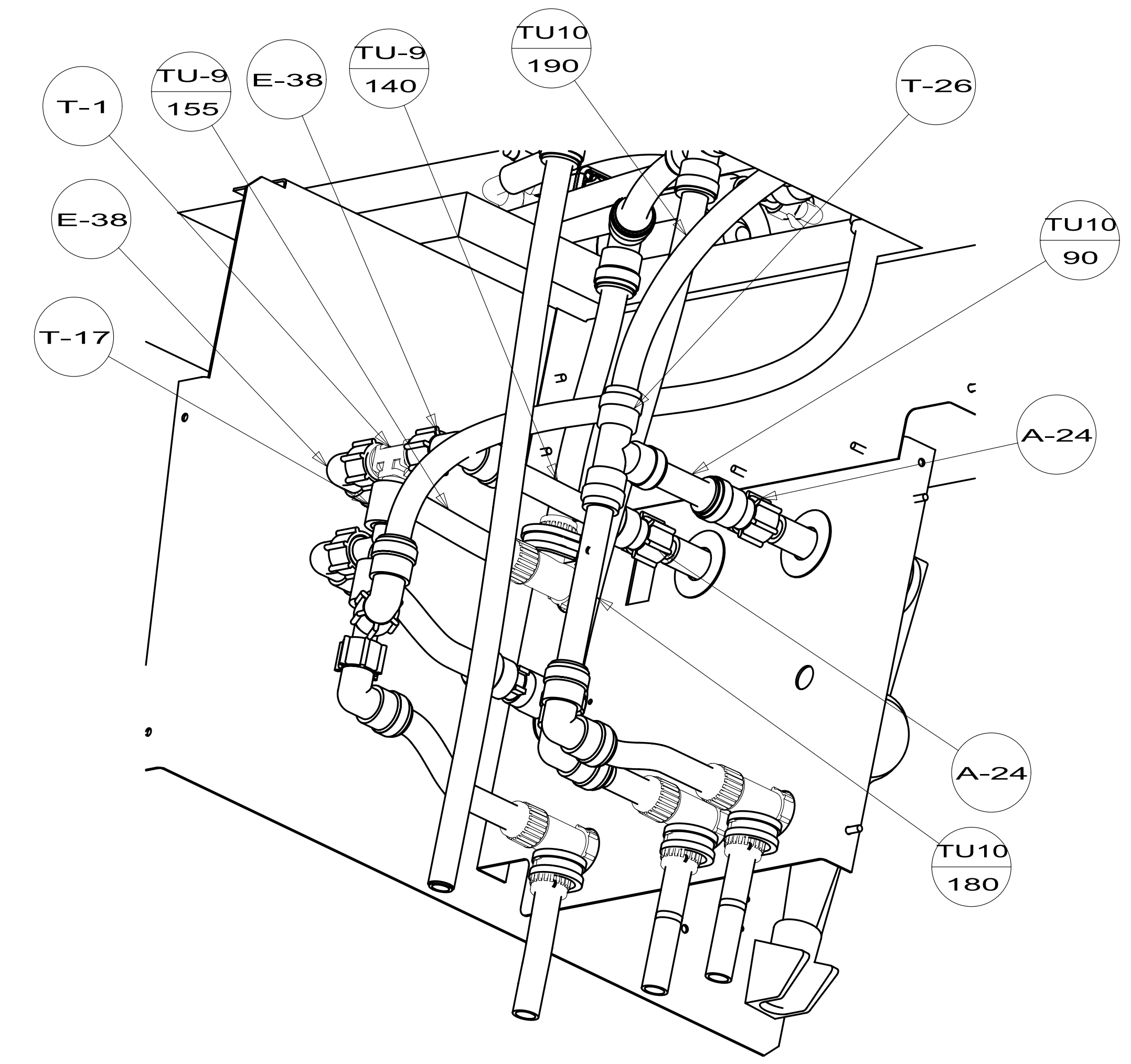


FIRST USED	12 H25R	
DO NOT SCALE DRAWING		
TITLE:	WATER SYSTEM INSTL	
SHEET 3	PART NO	179466
		REV

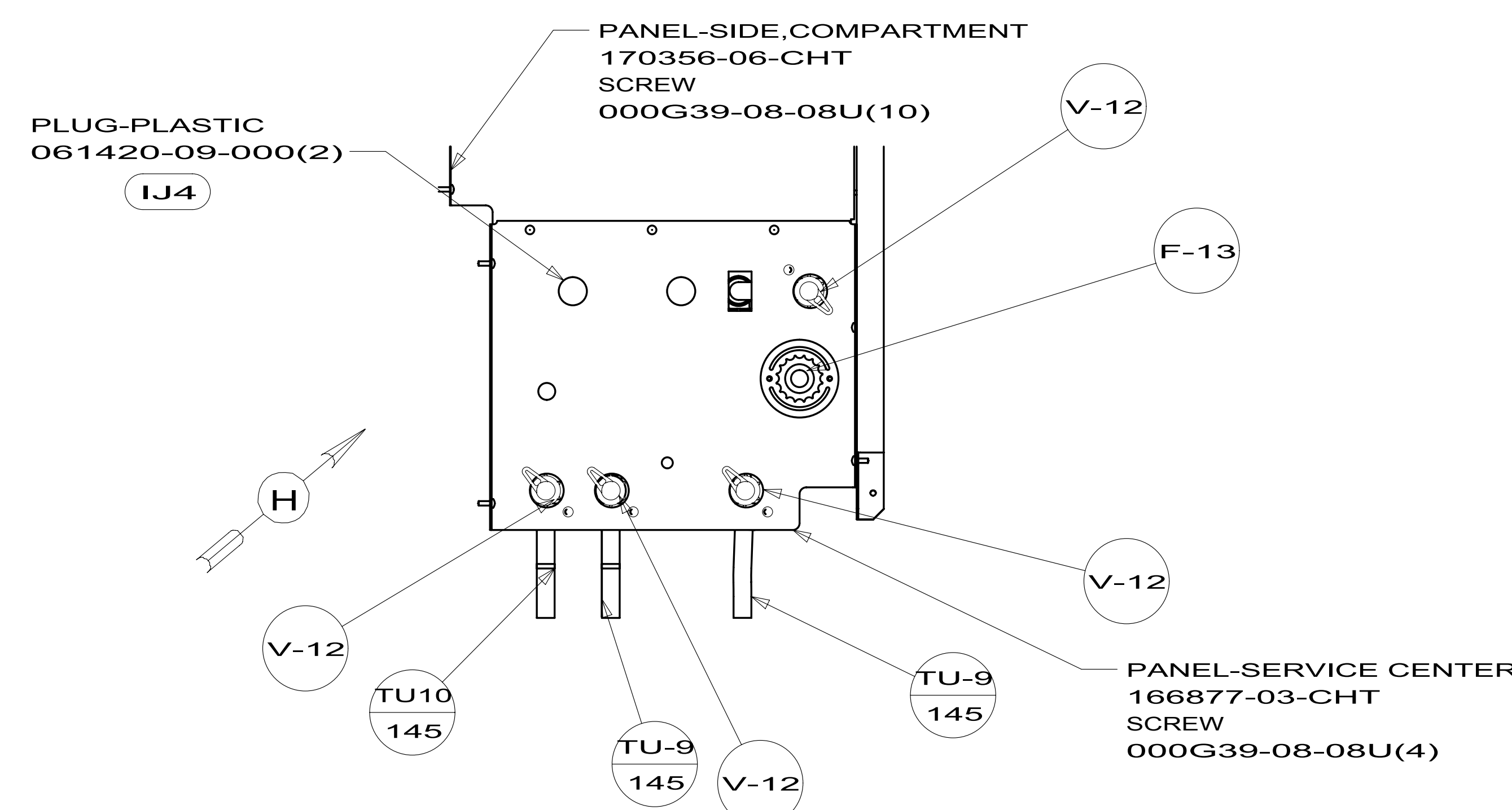
PANEL-ELECTRICAL
151707-05-CHT



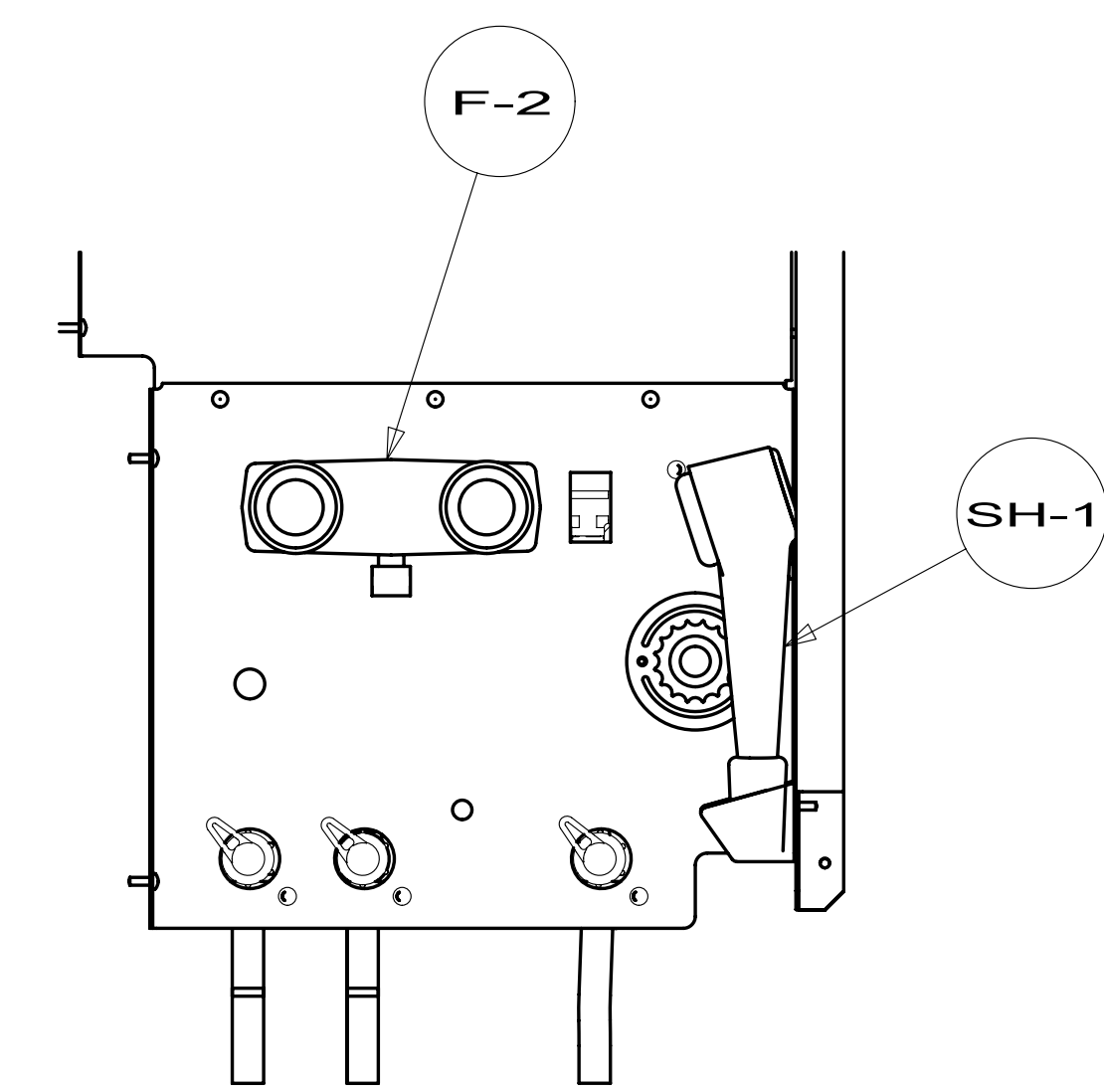
VIEW H



VIEW H
64R



VIEW G



VIEW G
64R

FIRST USED	12 H25R	
TITLE:	DO NOT SCALE DRAWING	
	WATER SYSTEM INSTL	
SHEET 4	PART NO. 179466	REV