

- NOTES:
1. SLOPE OF HORIZONTAL PIPING TO BE MIN 6 PER 305 mm.
 2. SLOPE OF TRAP ARM MUST BE 6 PER 305 mm.
 3. ALL PIPE AND FITTINGS TO BE ASSEMBLED WITH SOLVENT 4020-01-000 (US) 4020-02-000 (CAN).
 4. VENT PIPE MUST PROJECT 51 MIN AND 64 MAX ABOVE ROOF FOR PROPER FIT AND FUNCTION.
 5. SEAL AROUND SHOWER WITH SILICONE.
 6. USE SMOOTH PLUMBERS PUTTY 167459-01-000 TO SEAL STRAINER(.2 PER STRAINER)
 7. SECURE VENT PIPE TO FLOOR WITH CLAMP 062401-02-000 (2), SCREW 000G67-10-12B (2), BRACKET 136878-01-CHT (2).

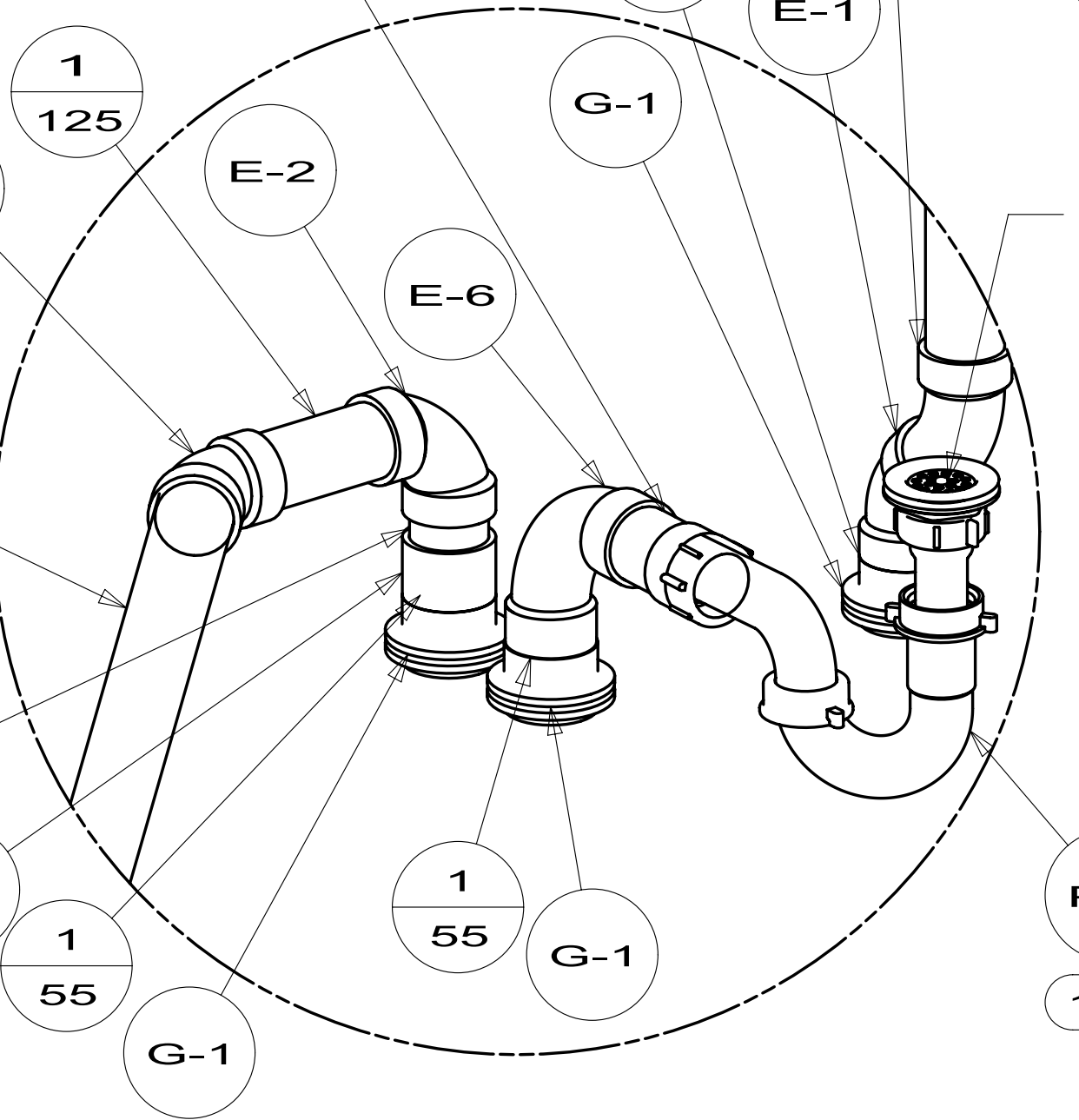
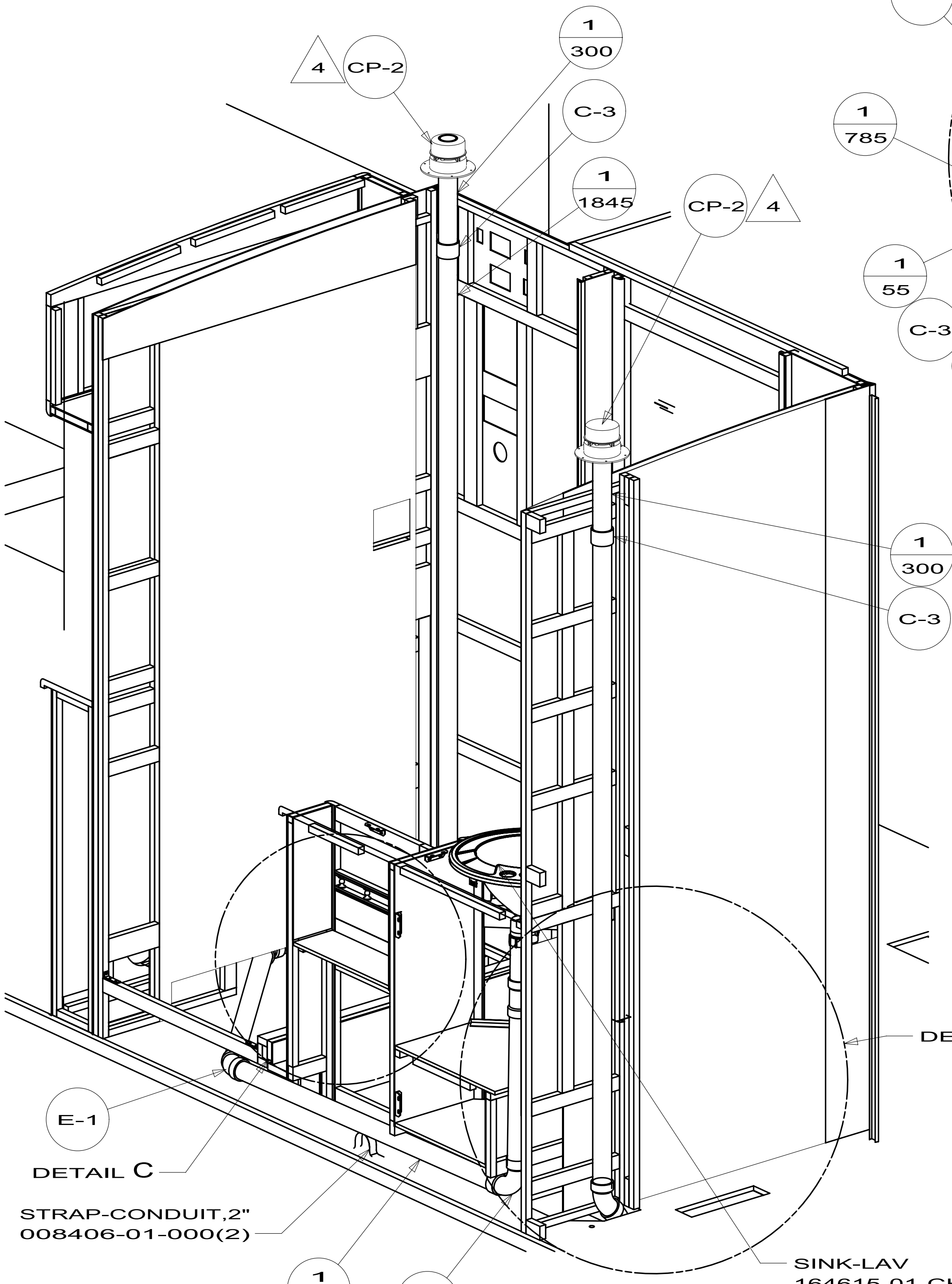
1B1 CODES/STANDARDS-USA
 265 CODES/STDA-CSA/CMVSS

		COPYRIGHT 2011 WINNEBAGO INDUSTRIES, INC.
DTR	ORIG. DATE	
CHKR	ALL DIMENSIONS ARE IN MILLIMETERS	
P.E.		
M.E.	FIRST USED	
DSNR	12 E36D	
UNSPECIFIED TOLERANCES ARE:		MATERIAL:
WHOLE DIM (X)	: 3	
ONE-PLACE (X.X)	:	
TWO-PLACE (X.XX)	:	
ANGLE	:	
THIRD ANGLE PROJECTION		
DO NOT SCALE DRAWING		REFER TO ES0018 FOR FASTENER TIGHTENING GUIDELINES
TITLE: DRAINAGE SYSTEM INSTL		
SHEET 1 OF 3	PART NO 179158	REV

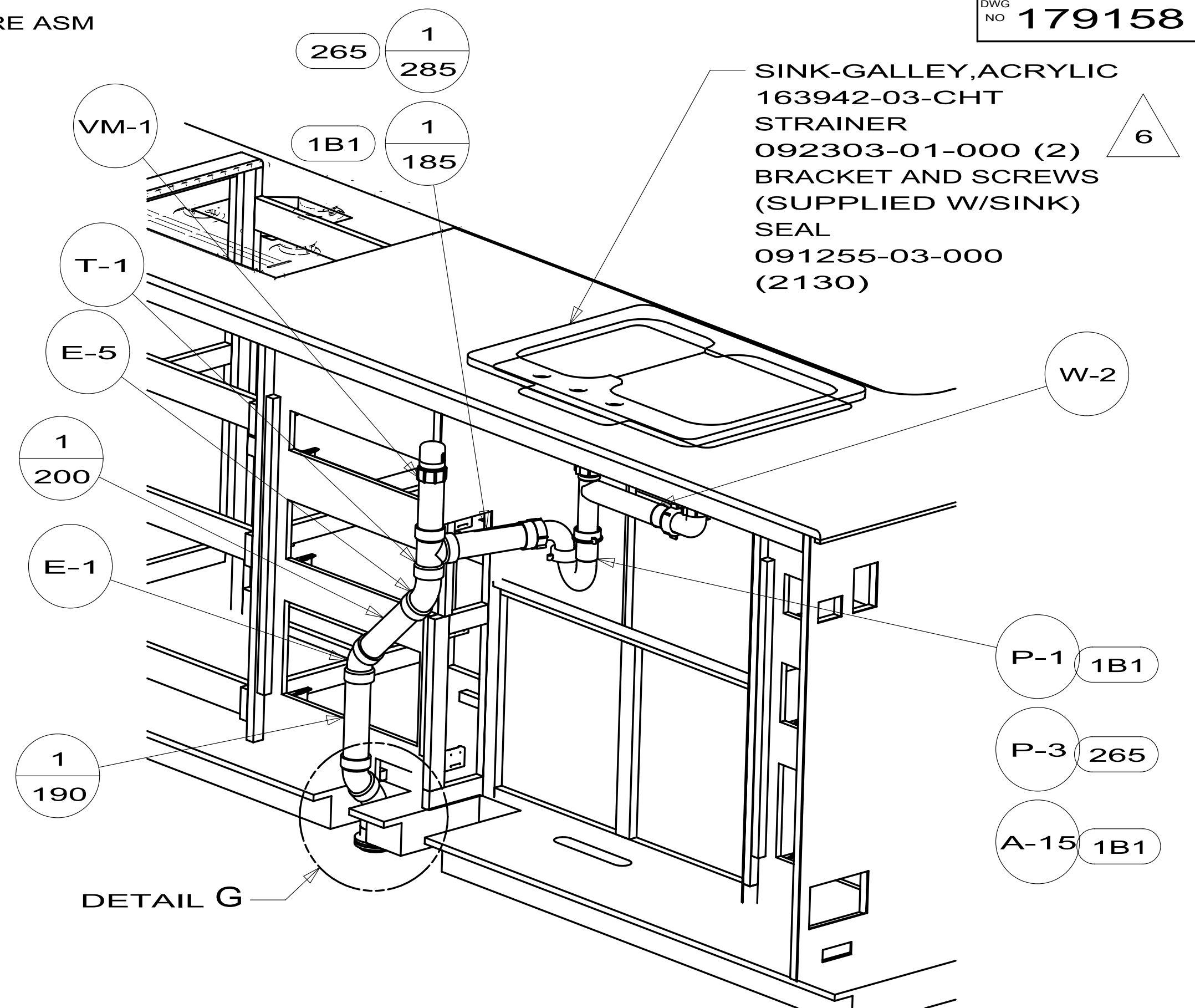
FOR DRAINAGE CALLOUTS SEE DWG NO 116229-01-000

- SHOWER ENCLOSURE ASM
 164684-03-000
 SEALER
 069640-01-000
 WASHER-RUBBER
 127440-02-CHT
 TAILPIECE
 011069-02-000
 NUT
 130403-01-000
 STRAINER
 066440-01-000

- SINK-GALLEY, ACRYLIC
 163942-03-CHT
 STRAINER
 092303-01-000 (2)
 BRACKET AND SCREWS
 (SUPPLIED W/SINK)
 SEAL
 091255-03-000
 (2130)

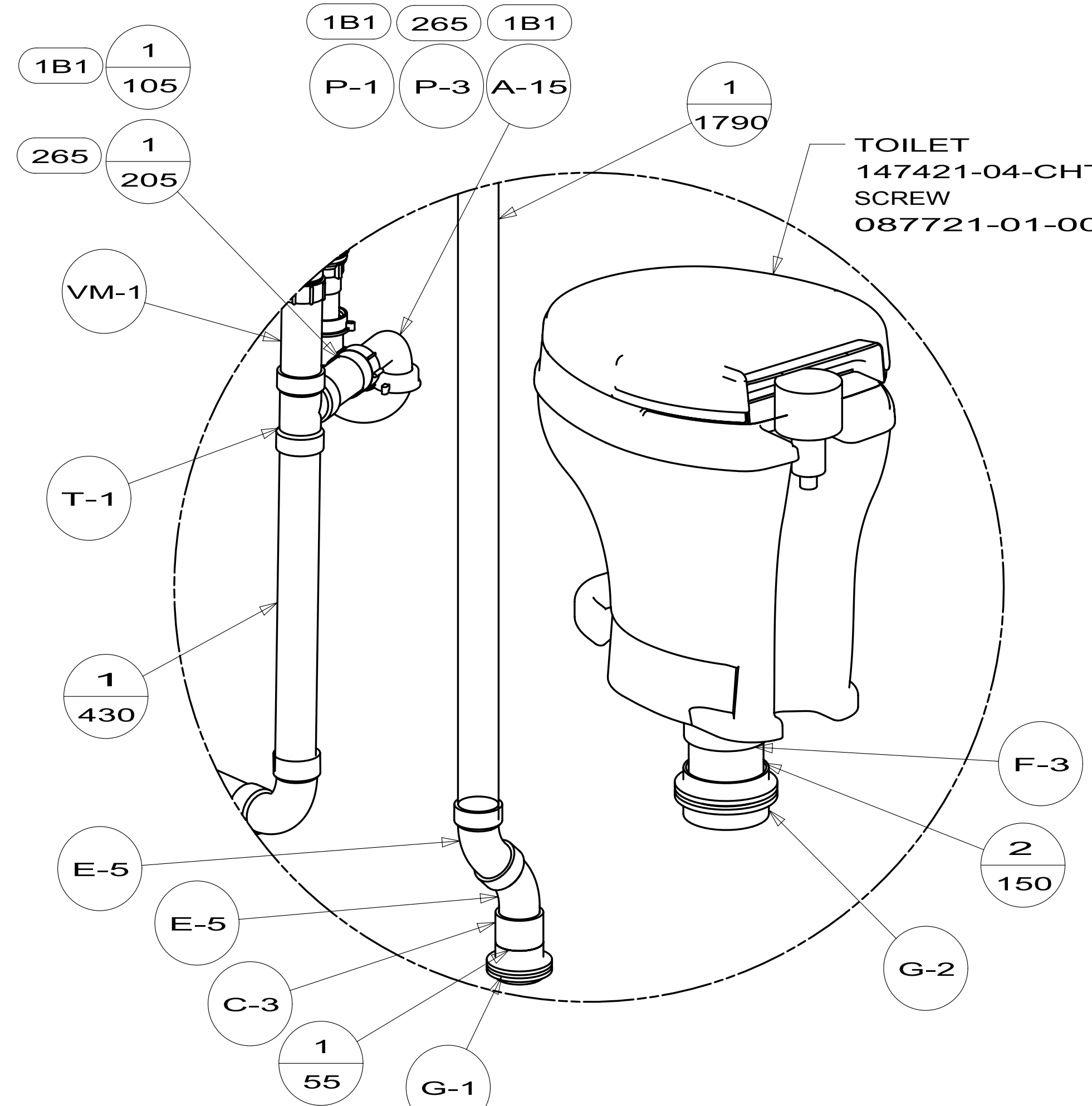


DETAIL C
 (SHOWN W/OUT FLOOR, SHOWER, AND CABINET)

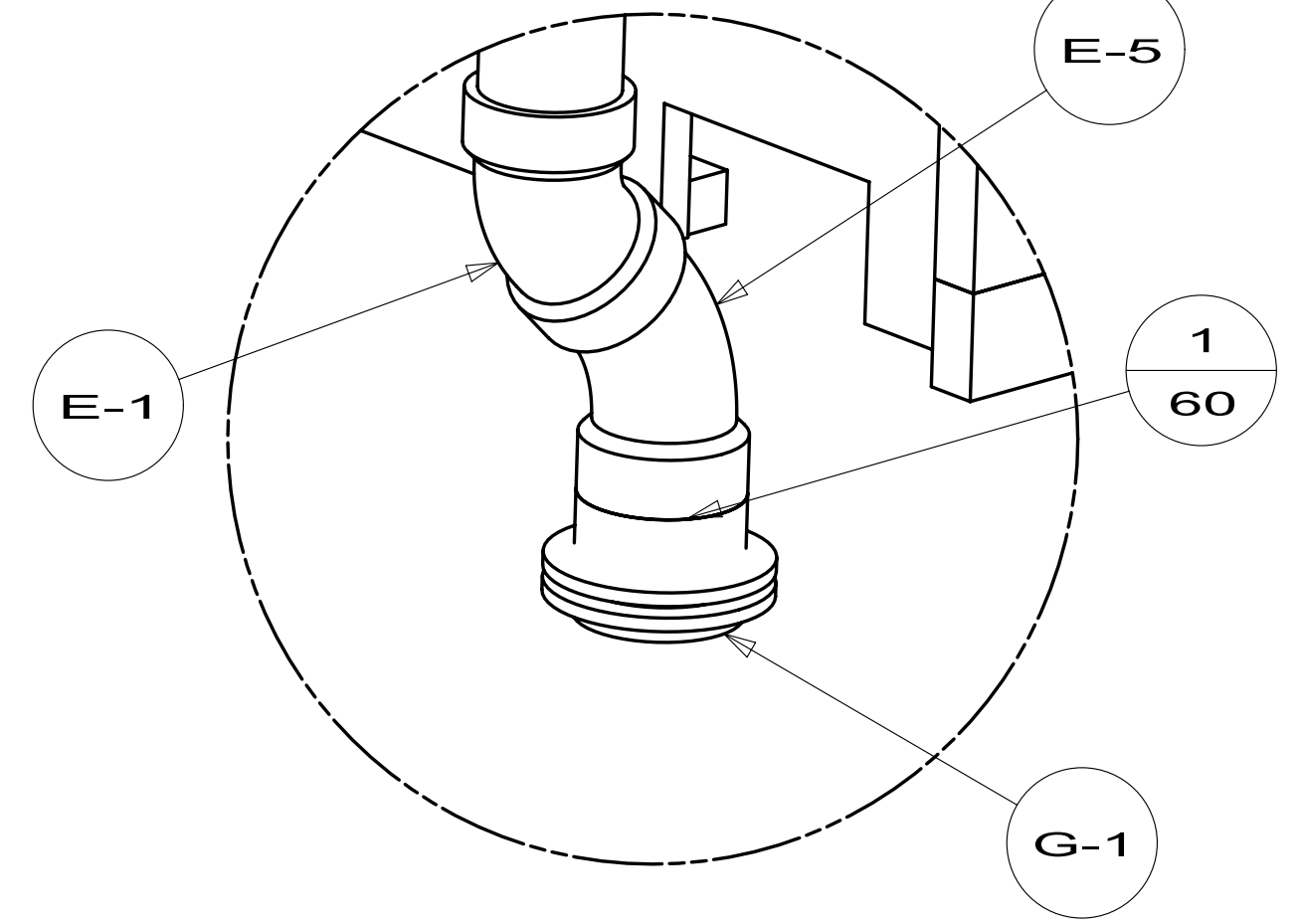


DETAIL G

VIEW B



DETAIL D
 (SHOWN W/OUT FLOOR AND CABINET)

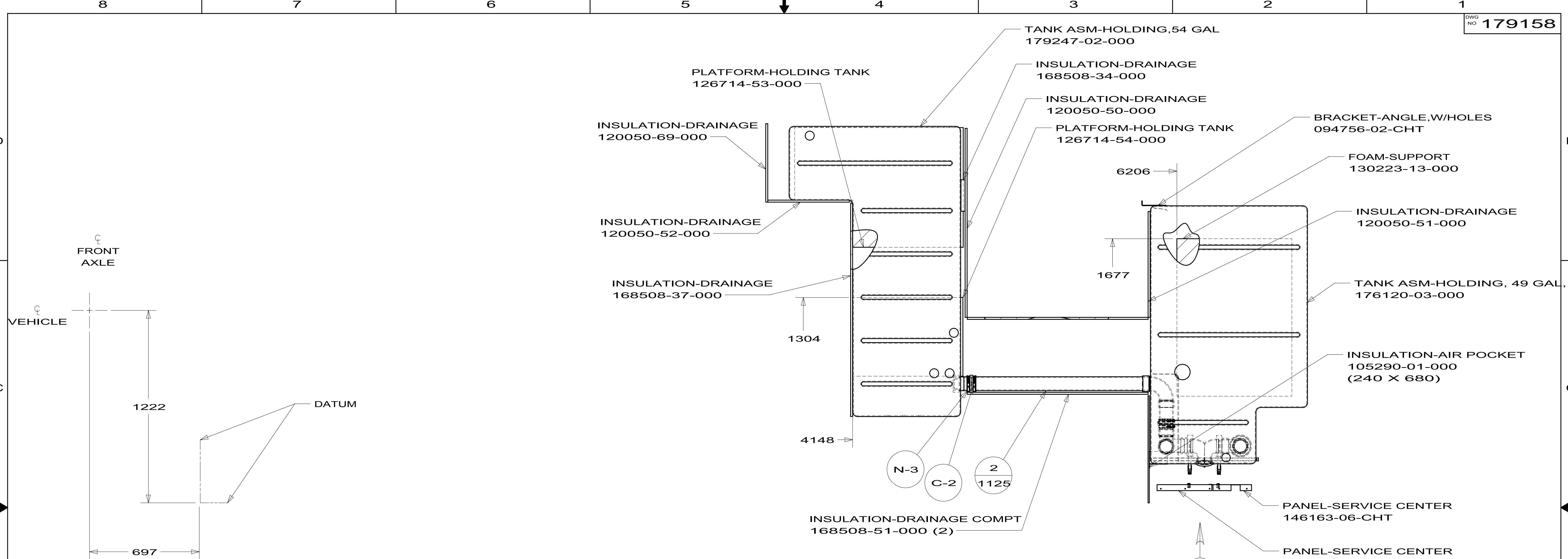


DETAIL G

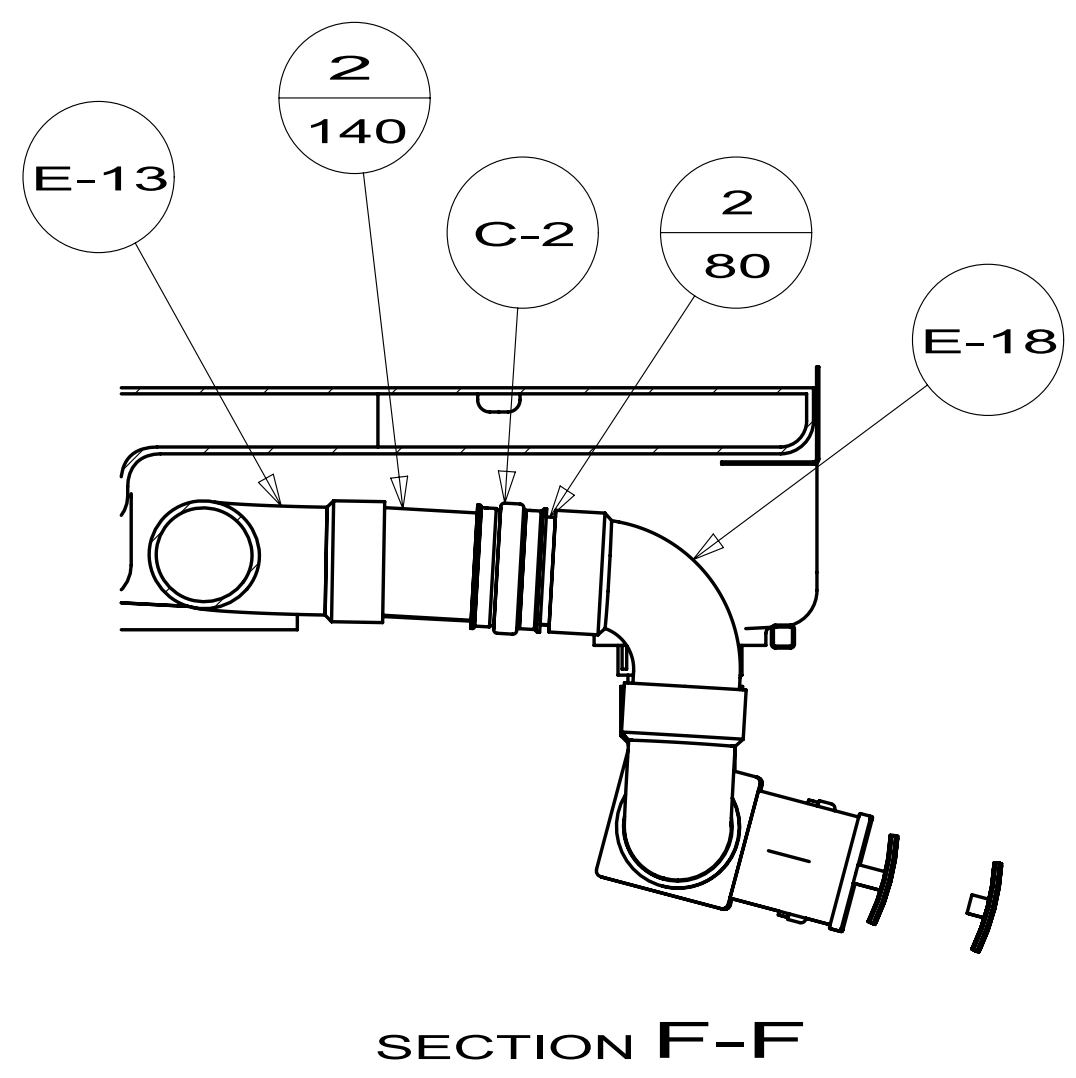
- SINK-LAV
 164615-01-CHT
 TAILPIECE
 106116-01-CHT
 GASKET
 106116-02-CHT
 SCREW
 G67-08-10U (4)

VIEW A

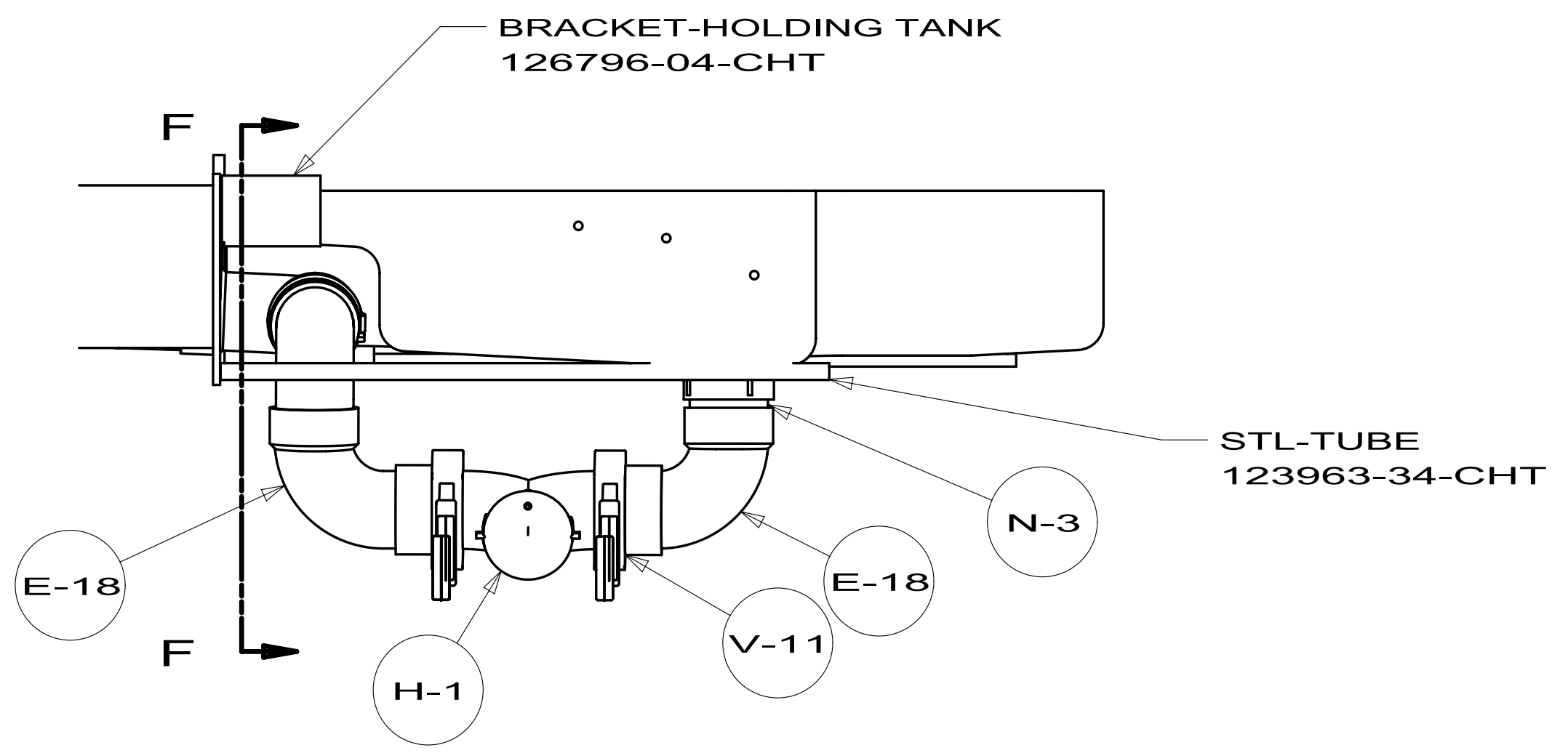
FIRST USED	12 E36D	
DO NOT SCALE DRAWING		
TITLE: DRAINAGE SYSTEM INSTL		
SHEET 2	PART NO 179158	REV



SHOWING TANKS AND DRAINS UNDER FLOOR

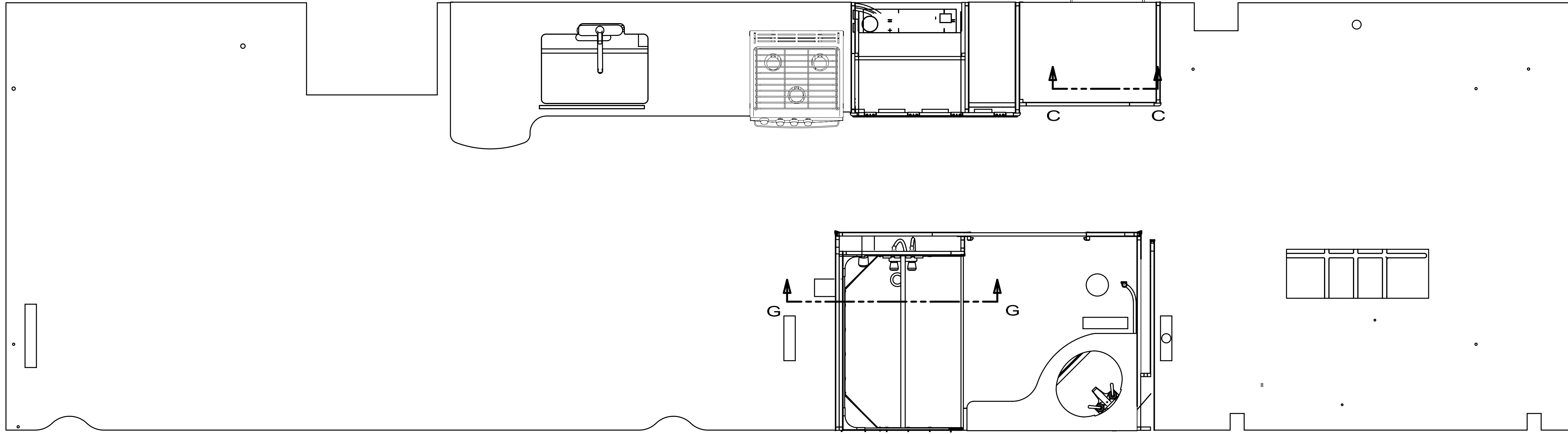


SECTION F-F



VIEW E (SHOWN W/OUT PANEL ASM)

FIRST USED	12 E36D	
DO NOT SCALE DRAWING		
TITLE: DRAINAGE SYSTEM INSTL		
SHEET 3	PART NO 179158	REV

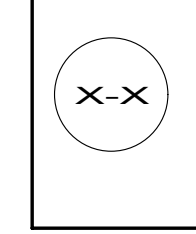


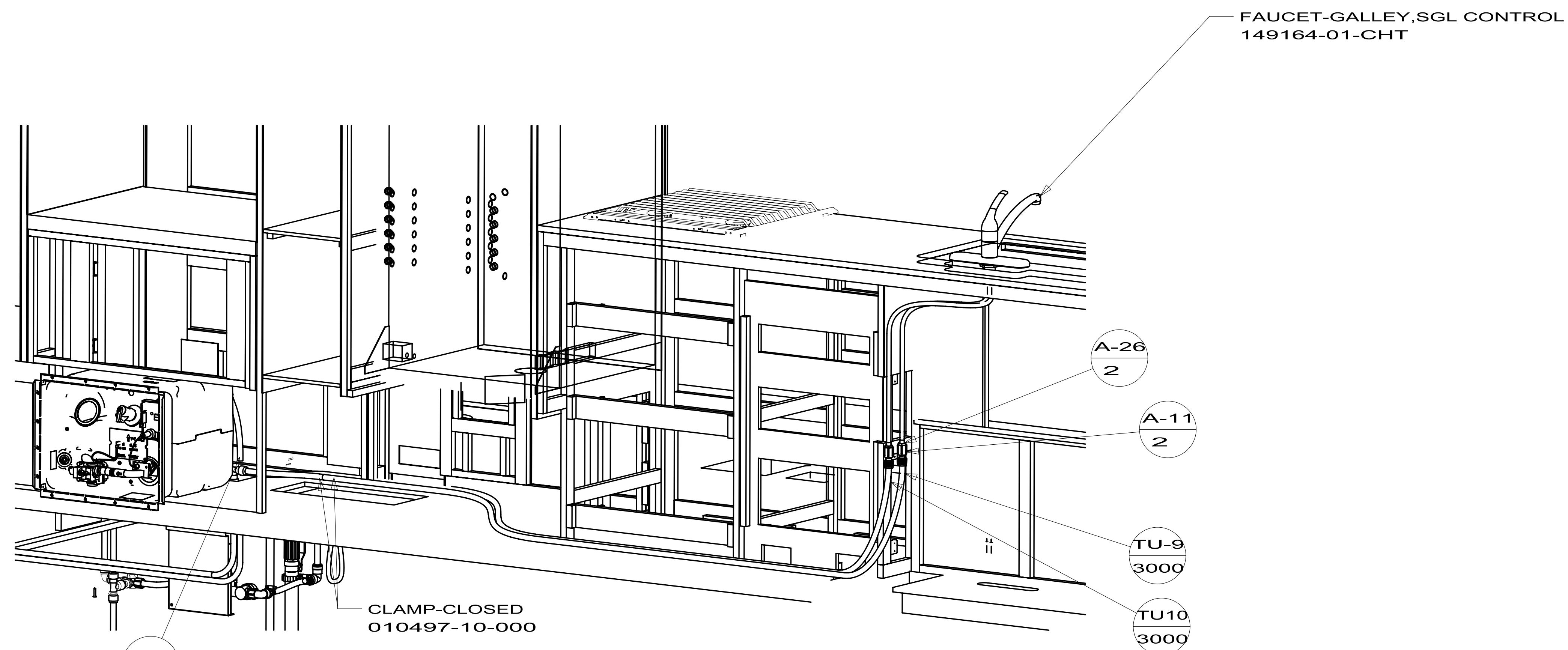
- NOTES:
- 1. PLASTIC FITTINGS TO BE SEALED WITH SEALANT 084456-01-000.
 - 2. TUBING TO BE INSTALLED WITH SUFFICIENT SLOPE TO PROVIDE DRAINAGE TO NEAREST VALVE.
 - 3. ALL TUBING TO BE SECURED AT 1200 INTERVALS MAXIMUM WITH CLAMP 010495-01-000 AND SCREW 000G67-10-12B OR EQUIVALENT.
 - 4. FLUSHING SYSTEM REQUIRES 125697-06-000 INSTRUCTION SHEET.
 - 5. ADD TEFLON TAPE 010405-02-000.
 - 6. ADD TEFLON TAPE 010405-01-000.
 - 7. TAPE FITTING TO TUBE BEFORE CABINET SET TO PREVENT FITTING FROM MOVING.
 - 8. LABEL HOT AND COLD SUPPLY TUBES.
 - 9. ADD PIPE WRAP (LADDER SCRAP) INSULATION HERE.
 - 10. CHECK VALVE IS INSTALLED TO PREVENT WATER FROM ENTERING WATER HEATER.
 - 11. CHECK VALVE IS INSTALLED TO PREVENT WATER FROM LEAVING WATER HEATER.

- 1J4 EXT WASH STATION - WITHOUT
- 64R EXTERIOR WASH STATION
- 53F WATER HEATER-ELEC. IGNITION
- 53D WTR HTR-6GAL/ELE/LP/MOTORAID

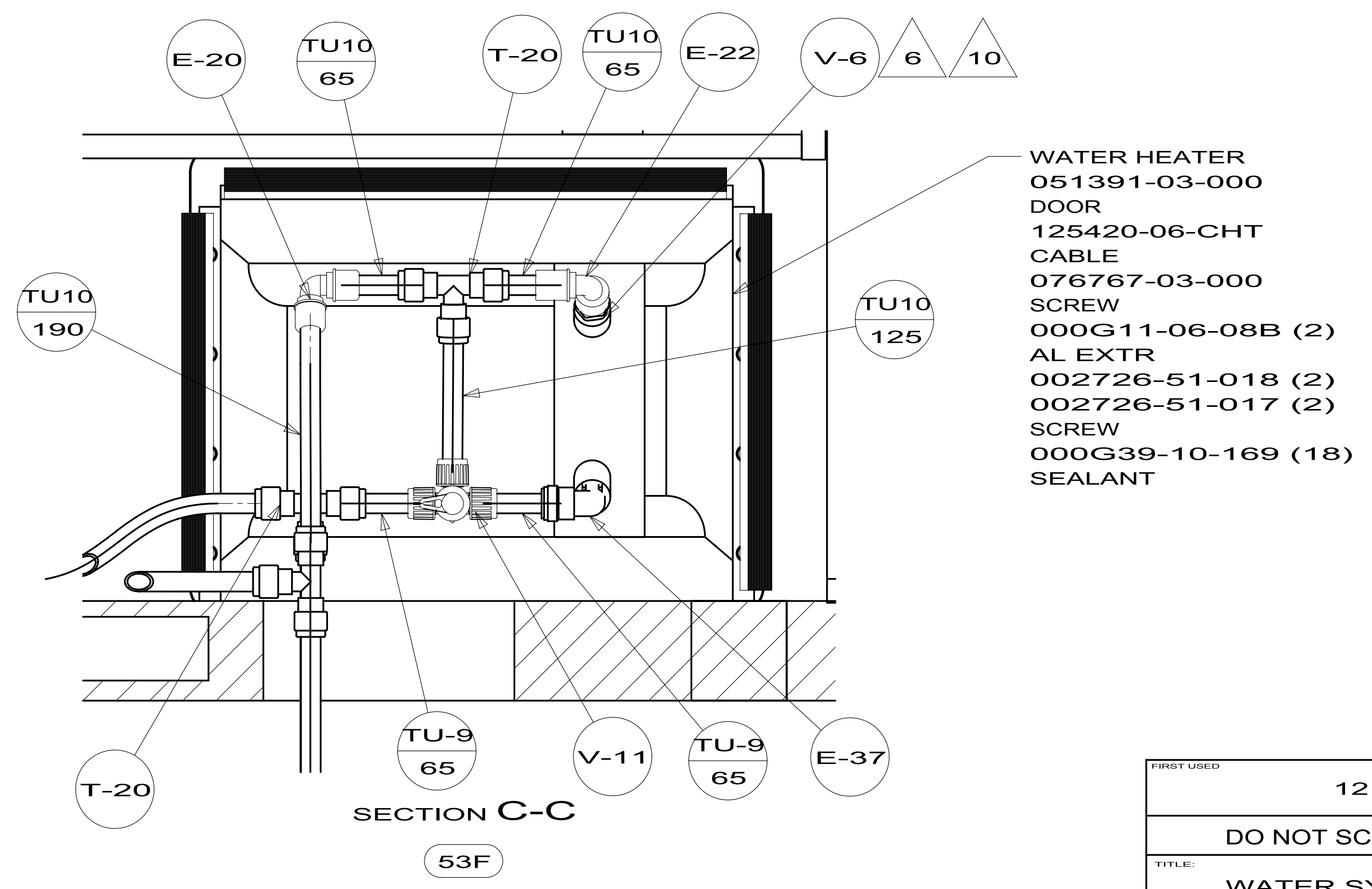
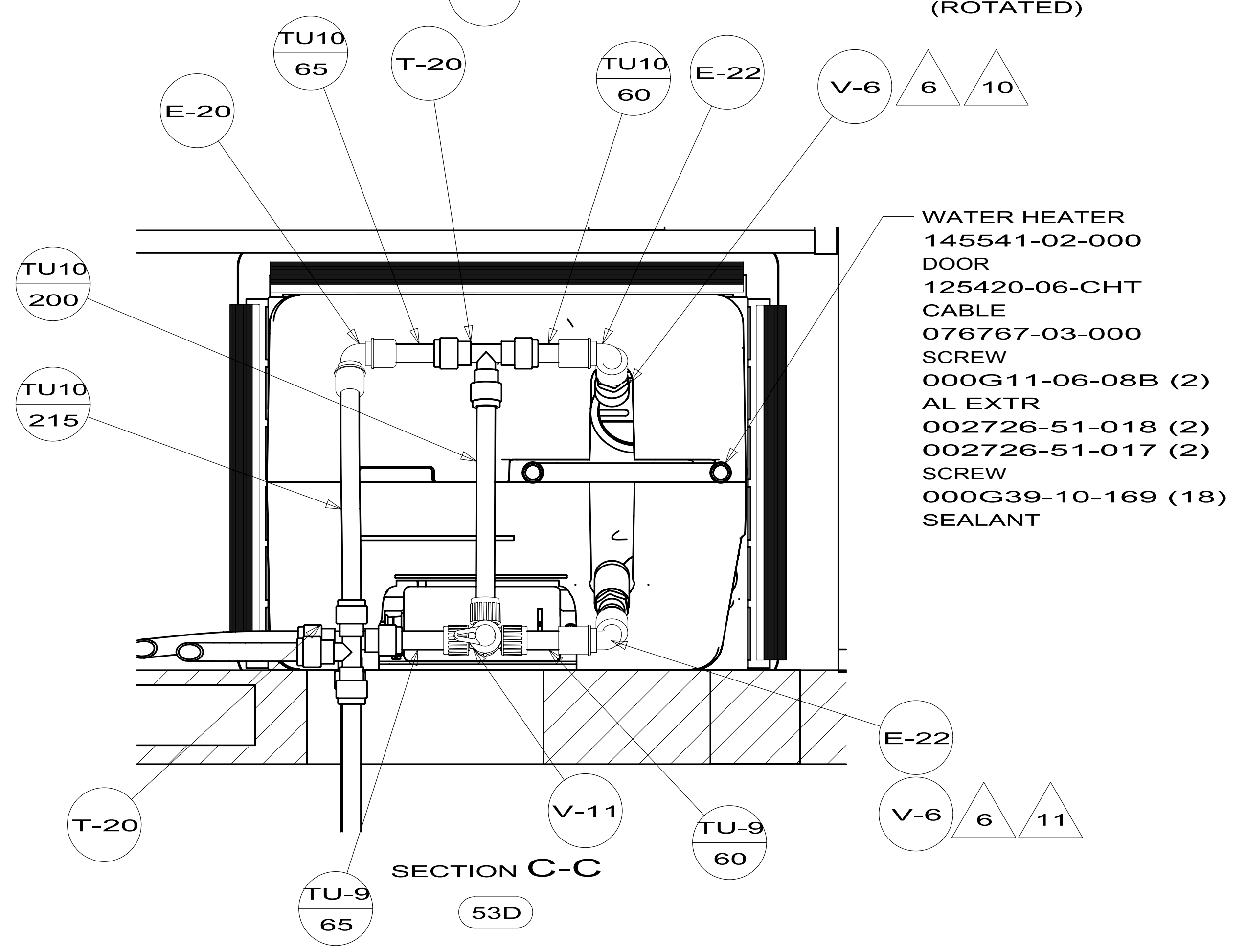
		COPYRIGHT 2011 WINNEBAGO INDUSTRIES, INC.
DTR	ORIG. DATE	ALL DIMENSIONS ARE IN MILLIMETERS
CHKR		
P.E.		
M.E.	FIRST USED	
DSNR		12 E36D
UNSPECIFIED TOLERANCES ARE: WHOLE DIM (X) : 3 ONE-PLACE (X.X) : 1.5 TWO-PLACE (X.XX) : 0.50 ANGLE : 1°		MATERIAL:
THIRD ANGLE PROJECTION		
DO NOT SCALE DRAWING		REFER TO ES0018 FOR FASTENER TIGHTENING GUIDELINES
TITLE: WATER SYSTEM INSTL		
SHEET 1 OF 5	PART NO	179157
REF:		1

FOR
WATER
CALLOUTS
SEE DWG NO
116230-01-000

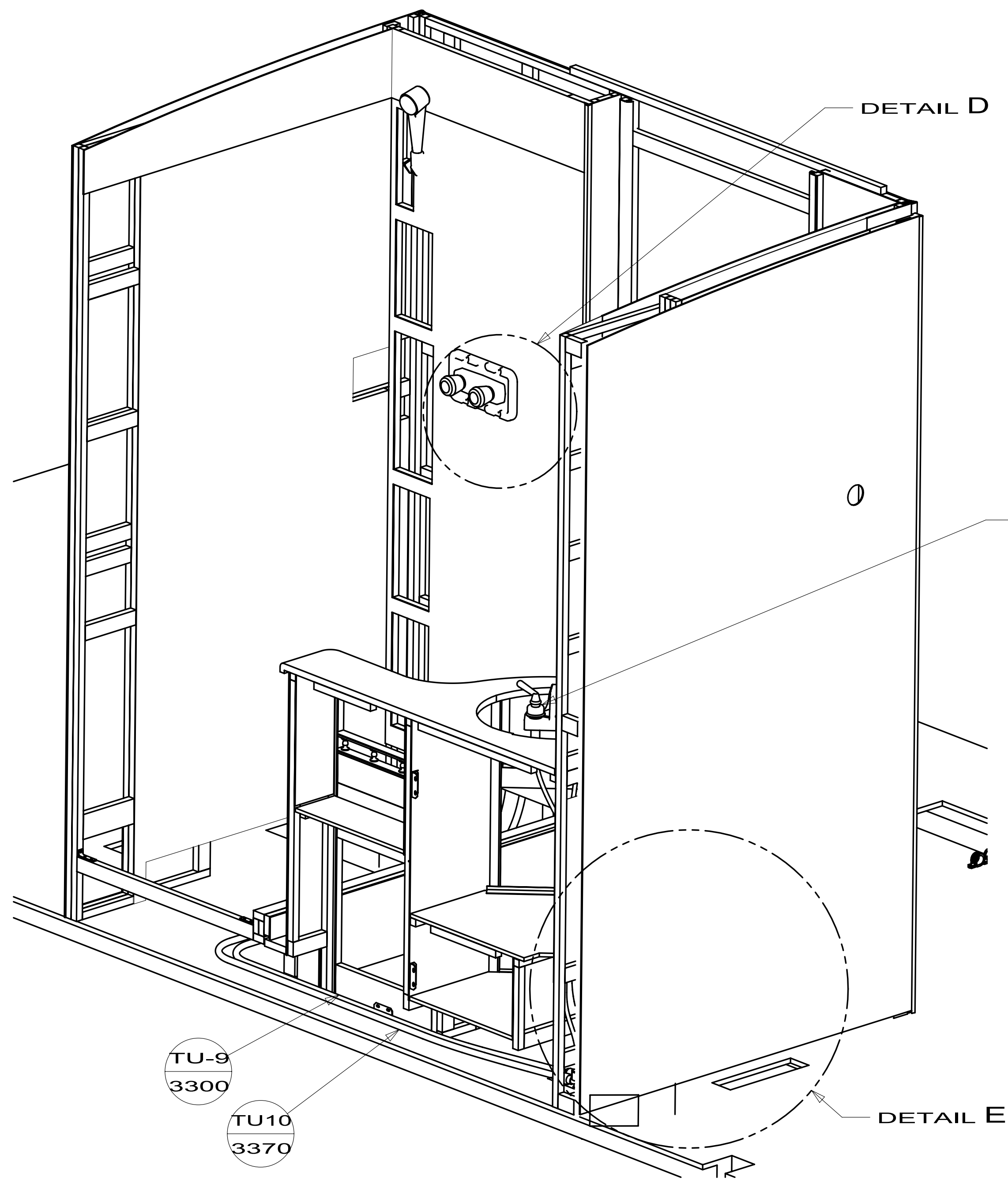




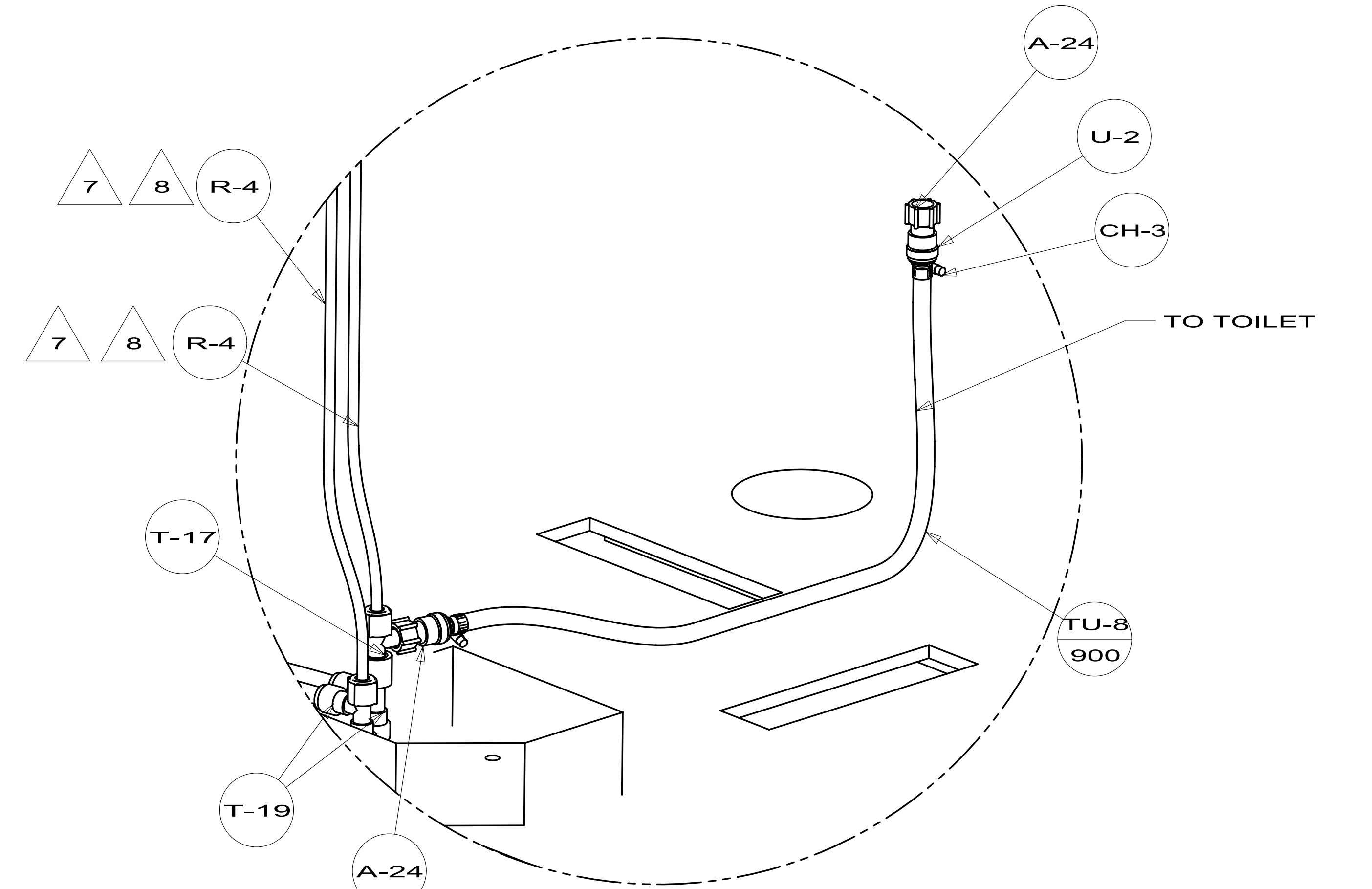
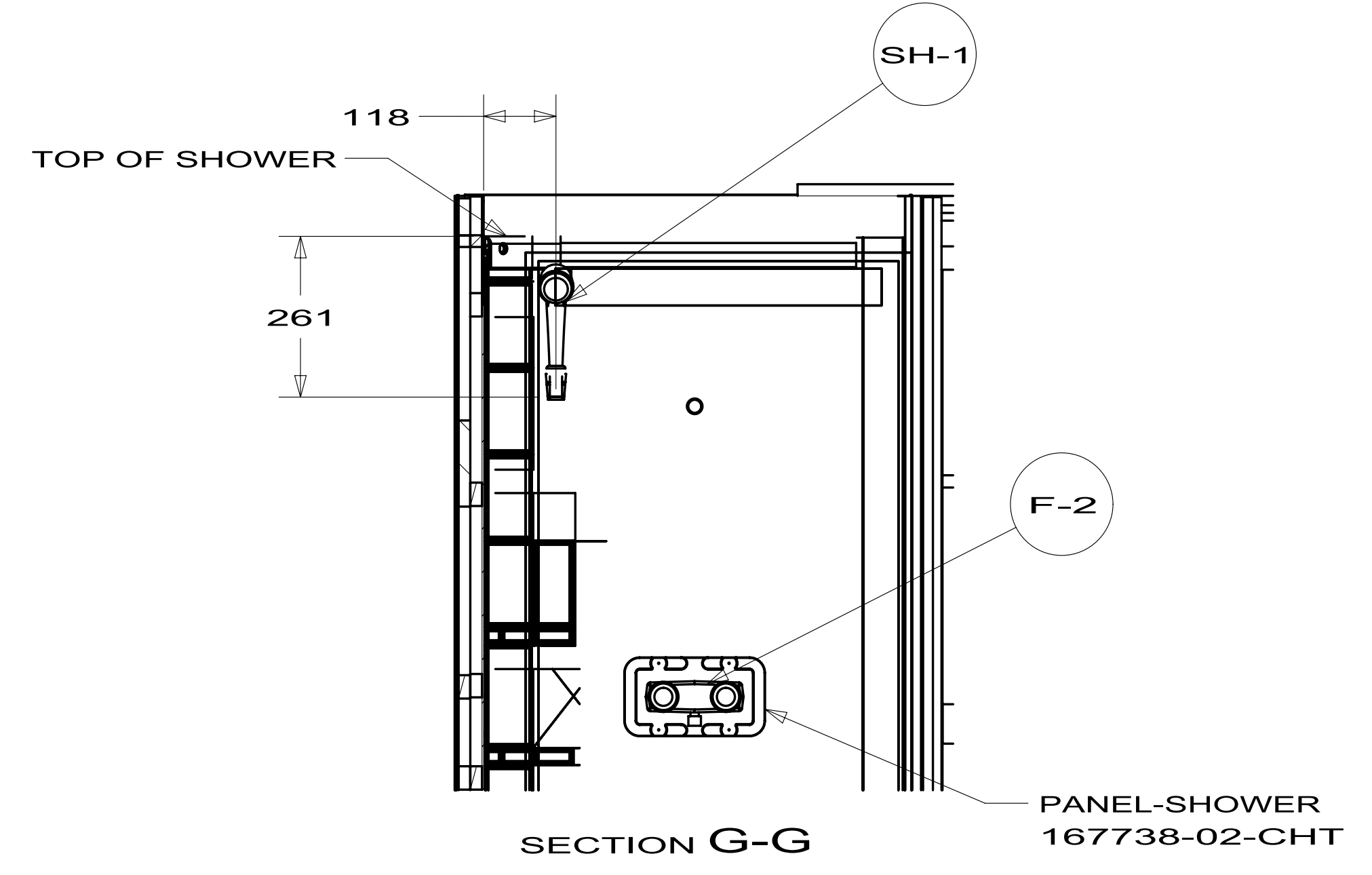
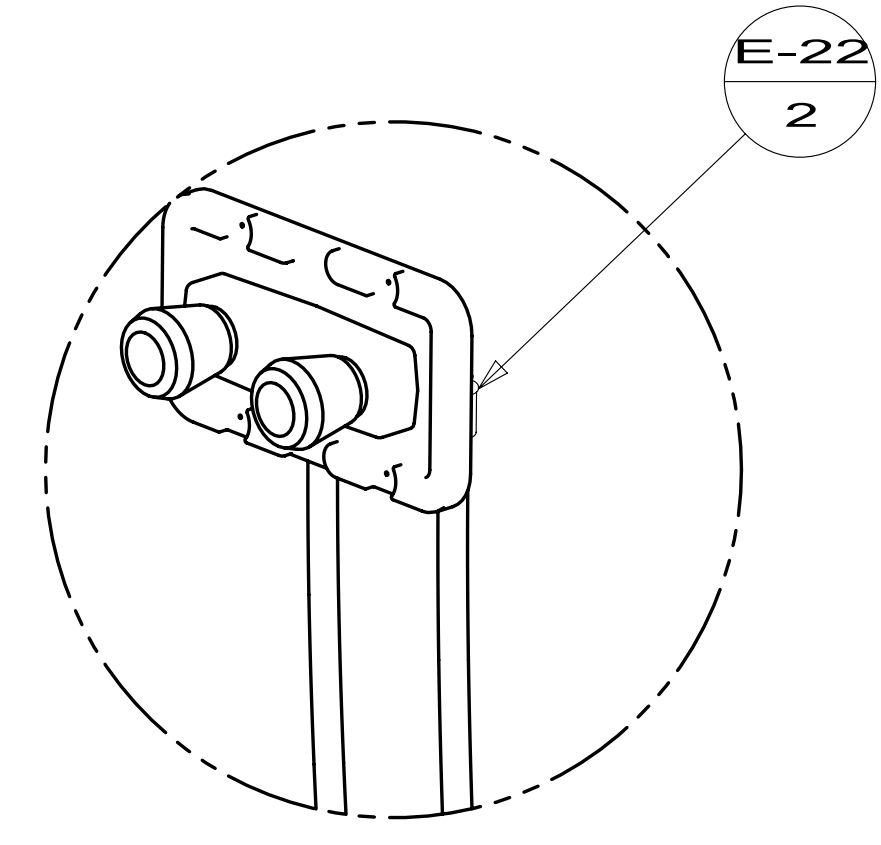
VIEW A (ROTATED)



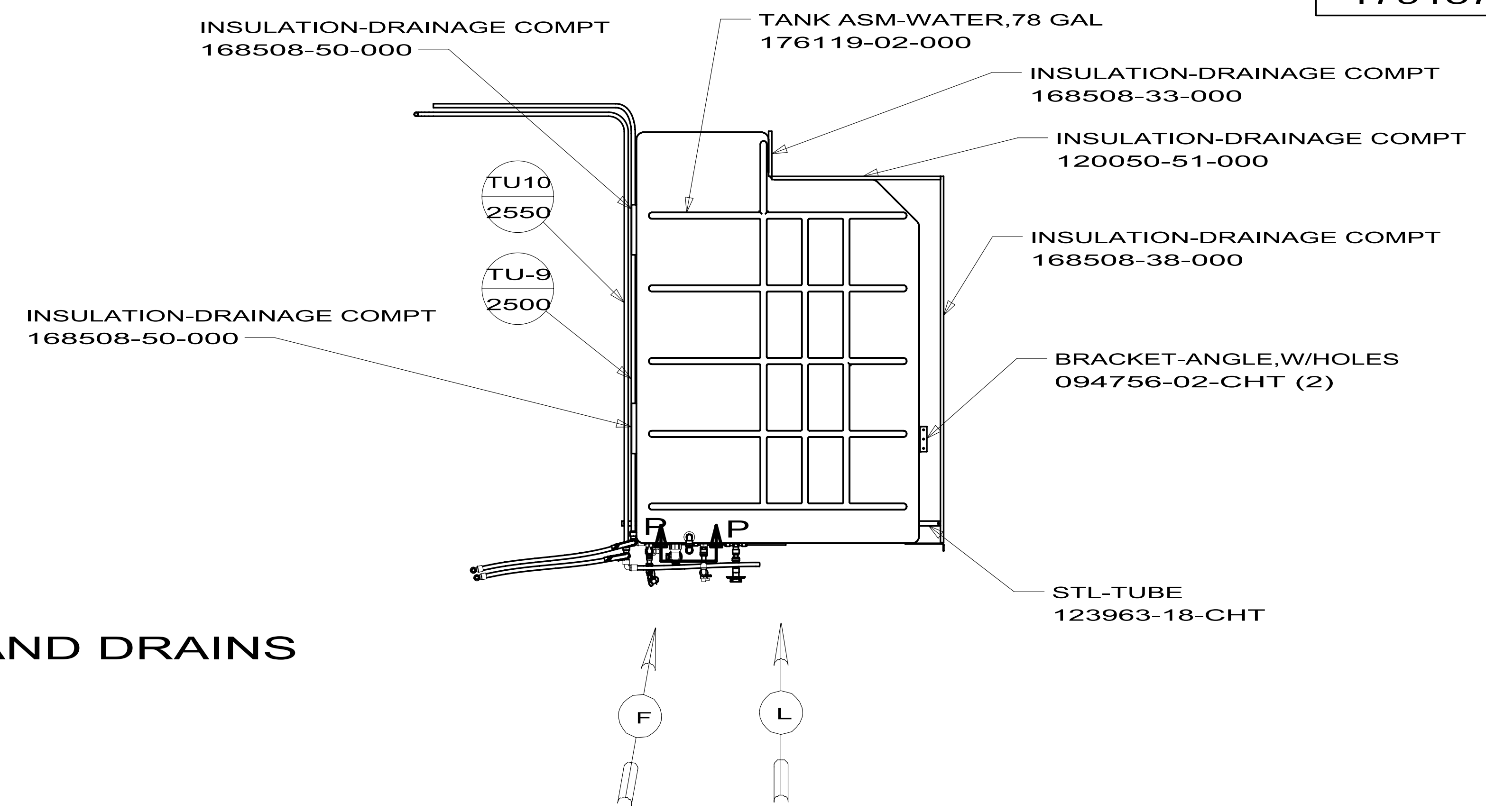
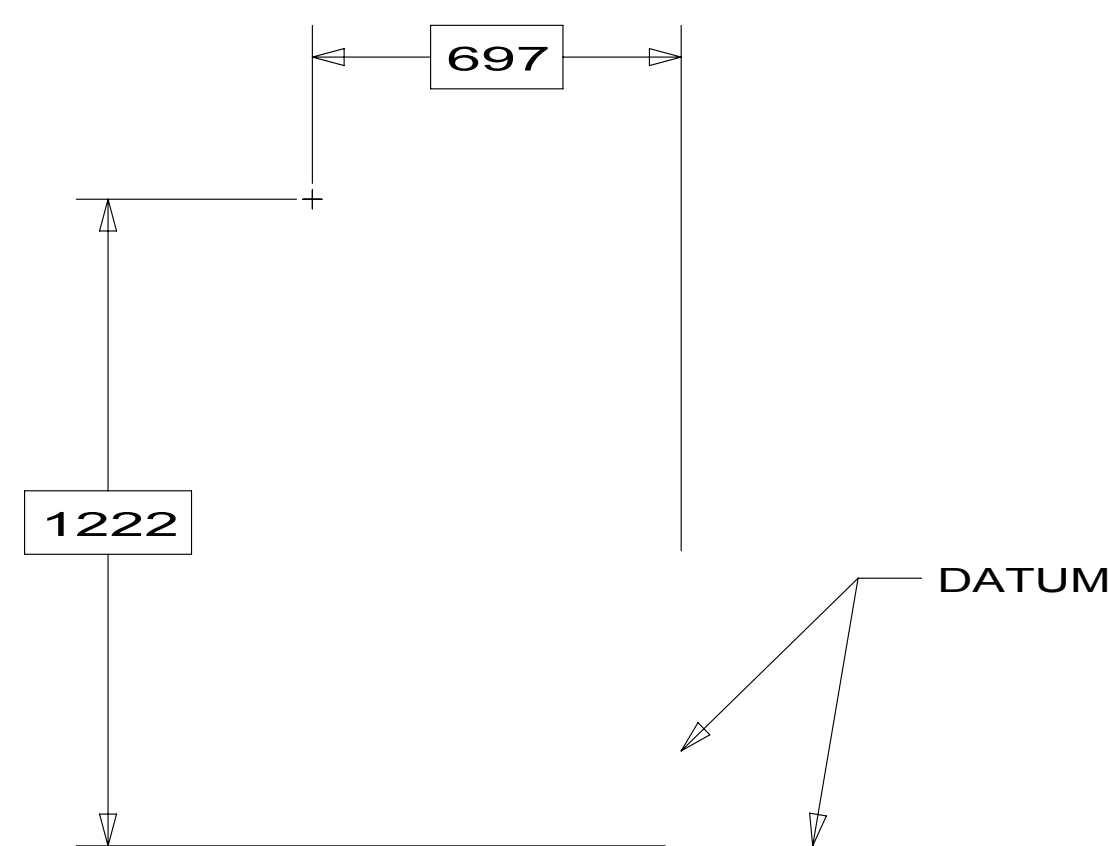
FIRST USED	12 E36D	
TITLE:	DO NOT SCALE DRAWING	
	WATER SYSTEM INSTL	
SHEET 2	PART NO 179157	REV



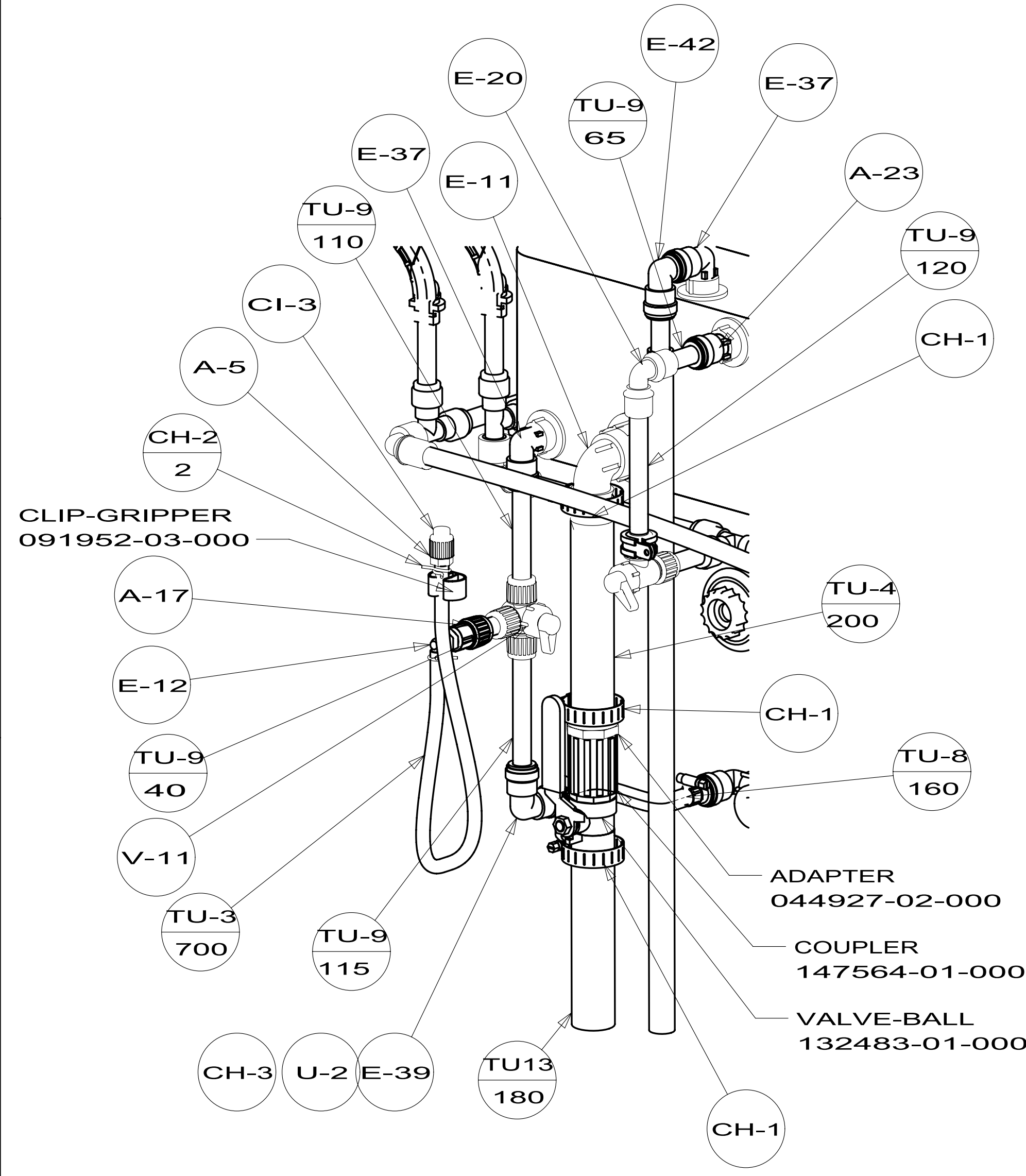
VIEW B



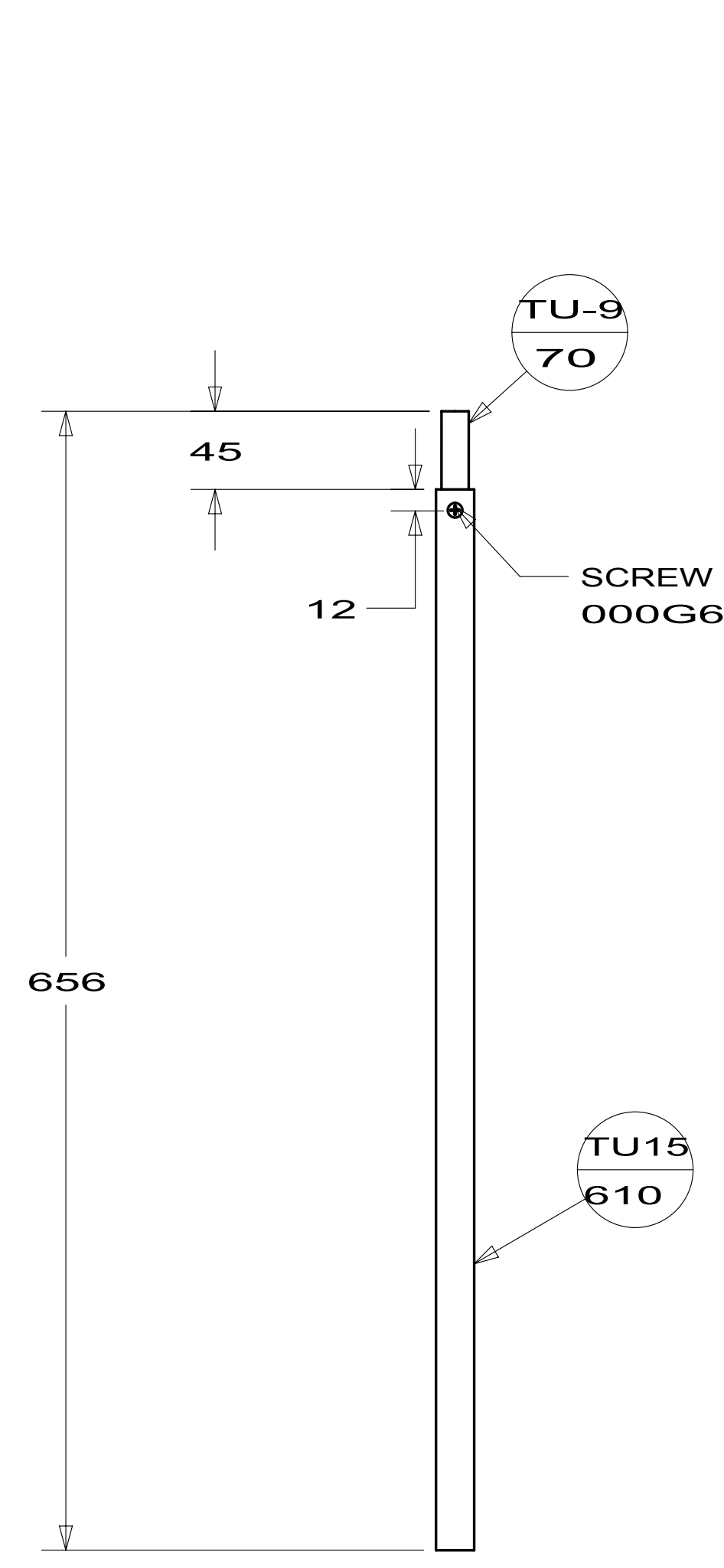
FIRST USED	12 E36D	
TITLE:	DO NOT SCALE DRAWING	
	WATER SYSTEM INSTL	
SHEET 3	PART NO. 179157	REV



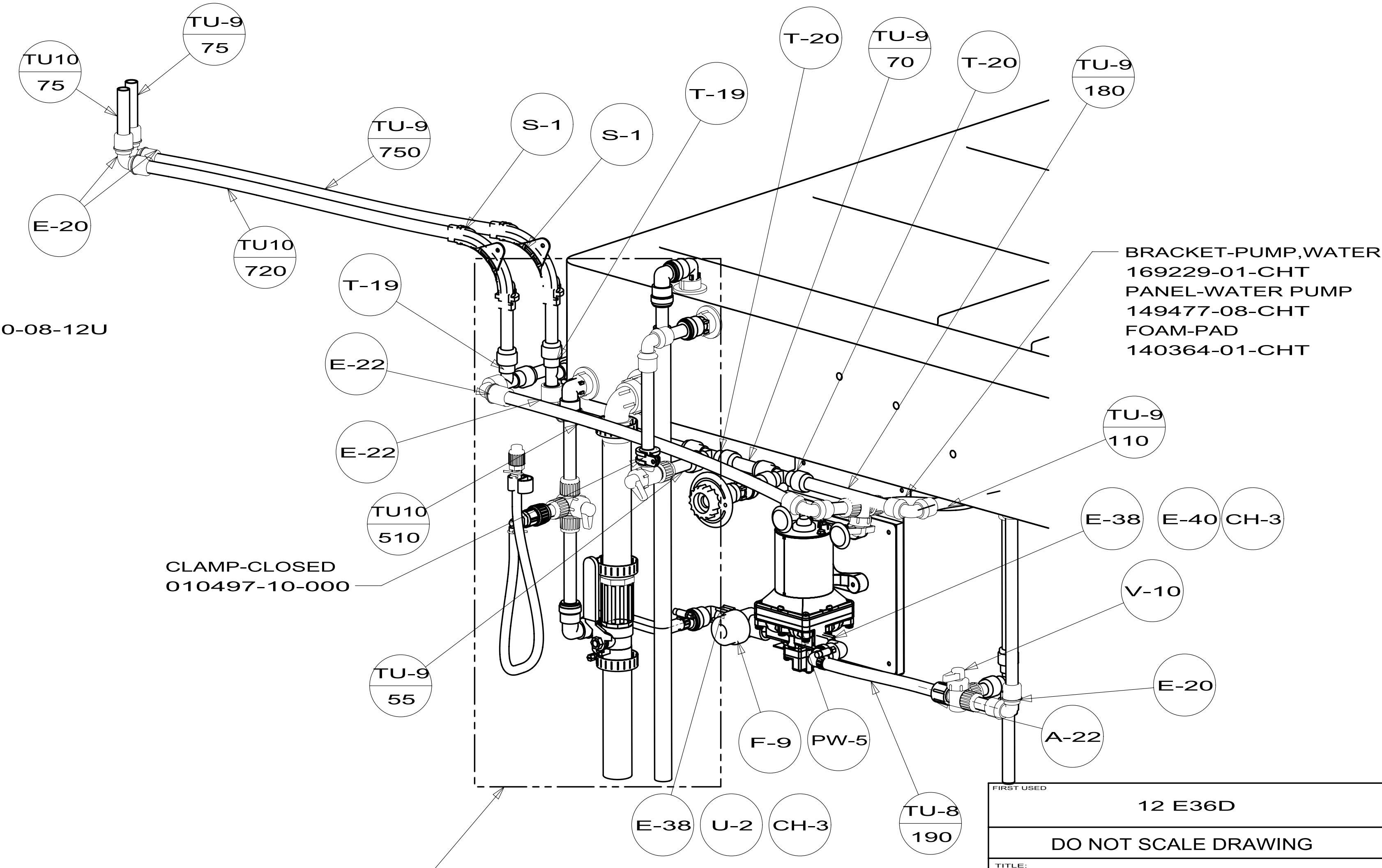
SHOWING ONLY TANKS AND DRAINS



DETAIL K

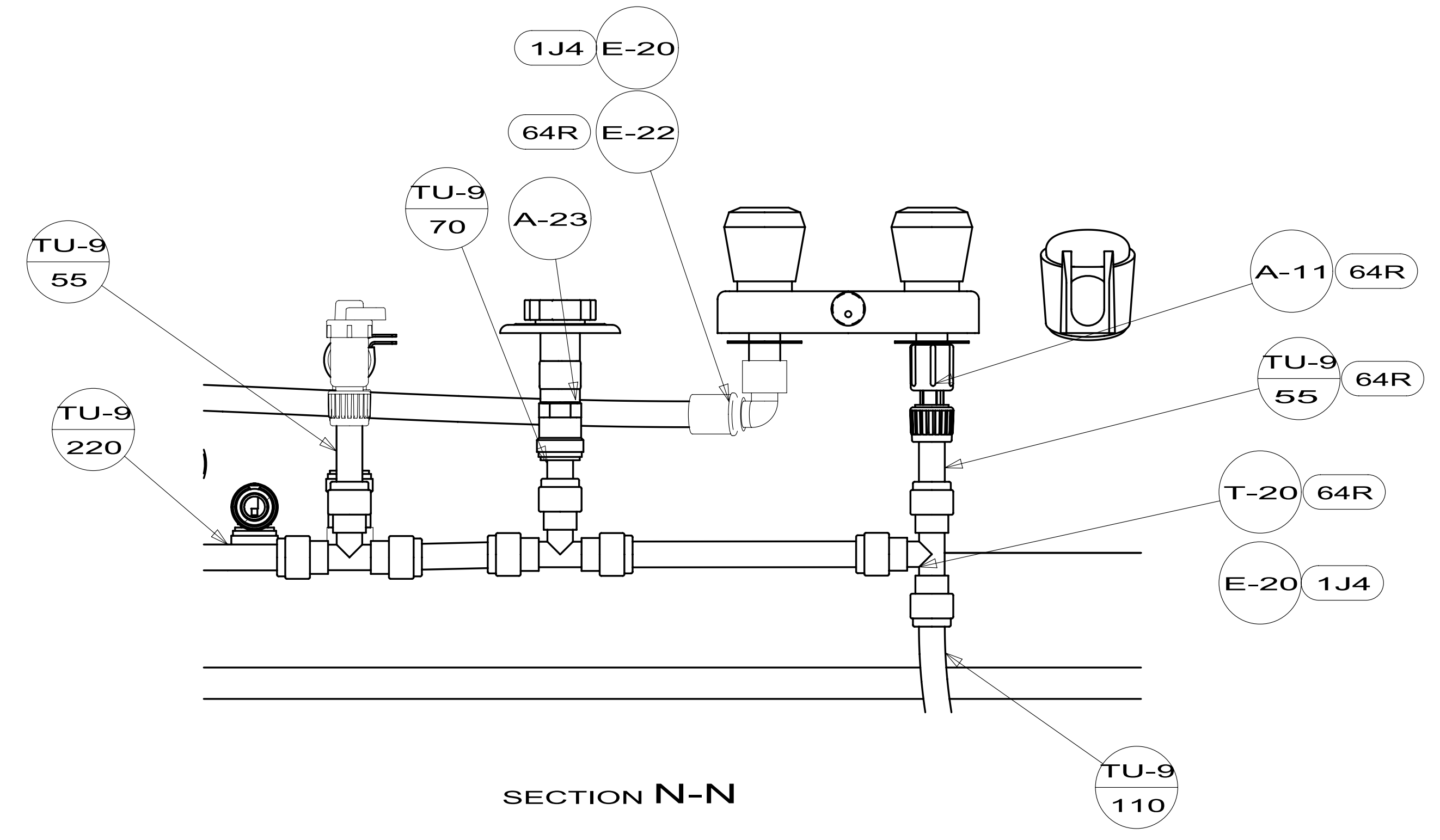
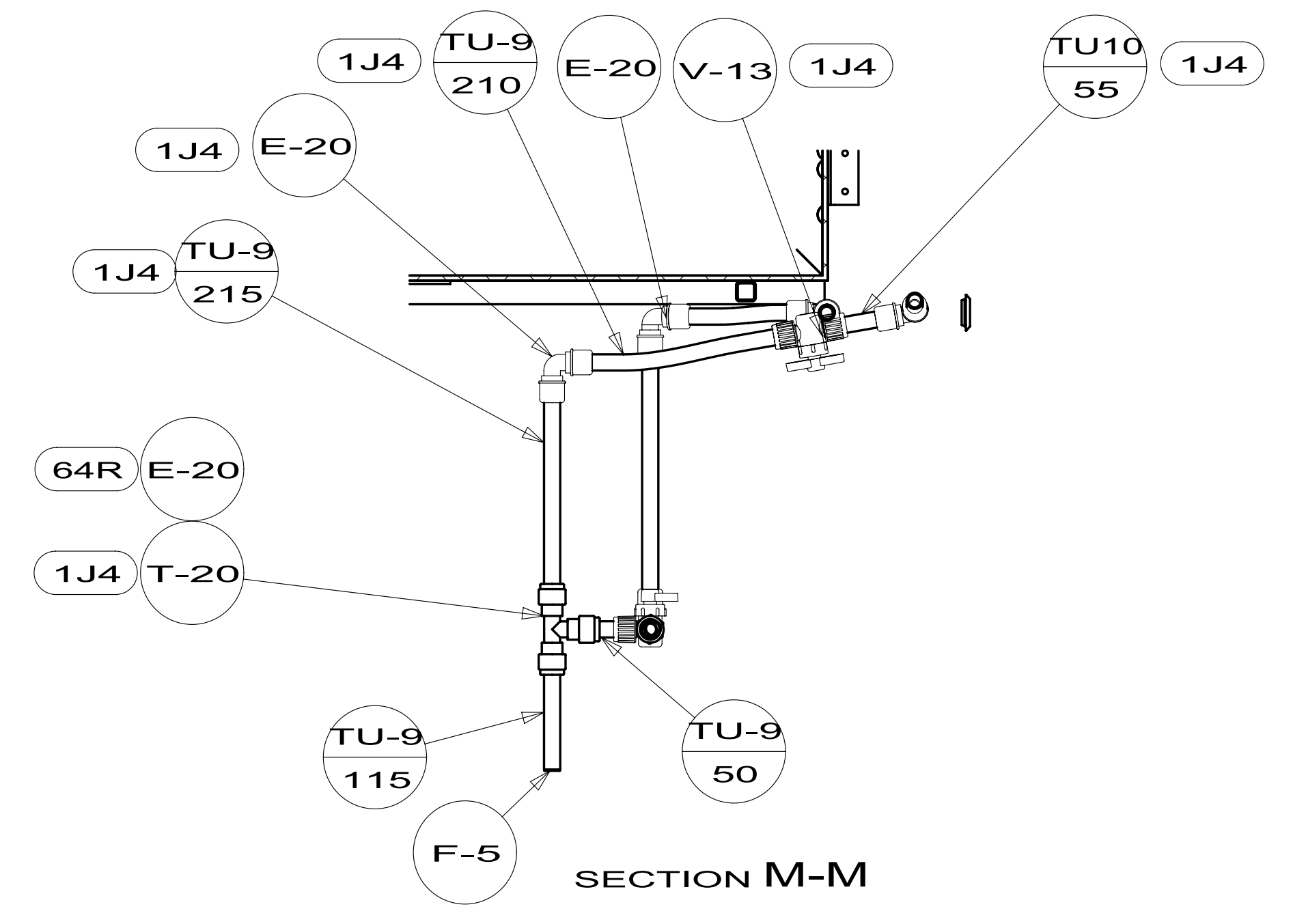
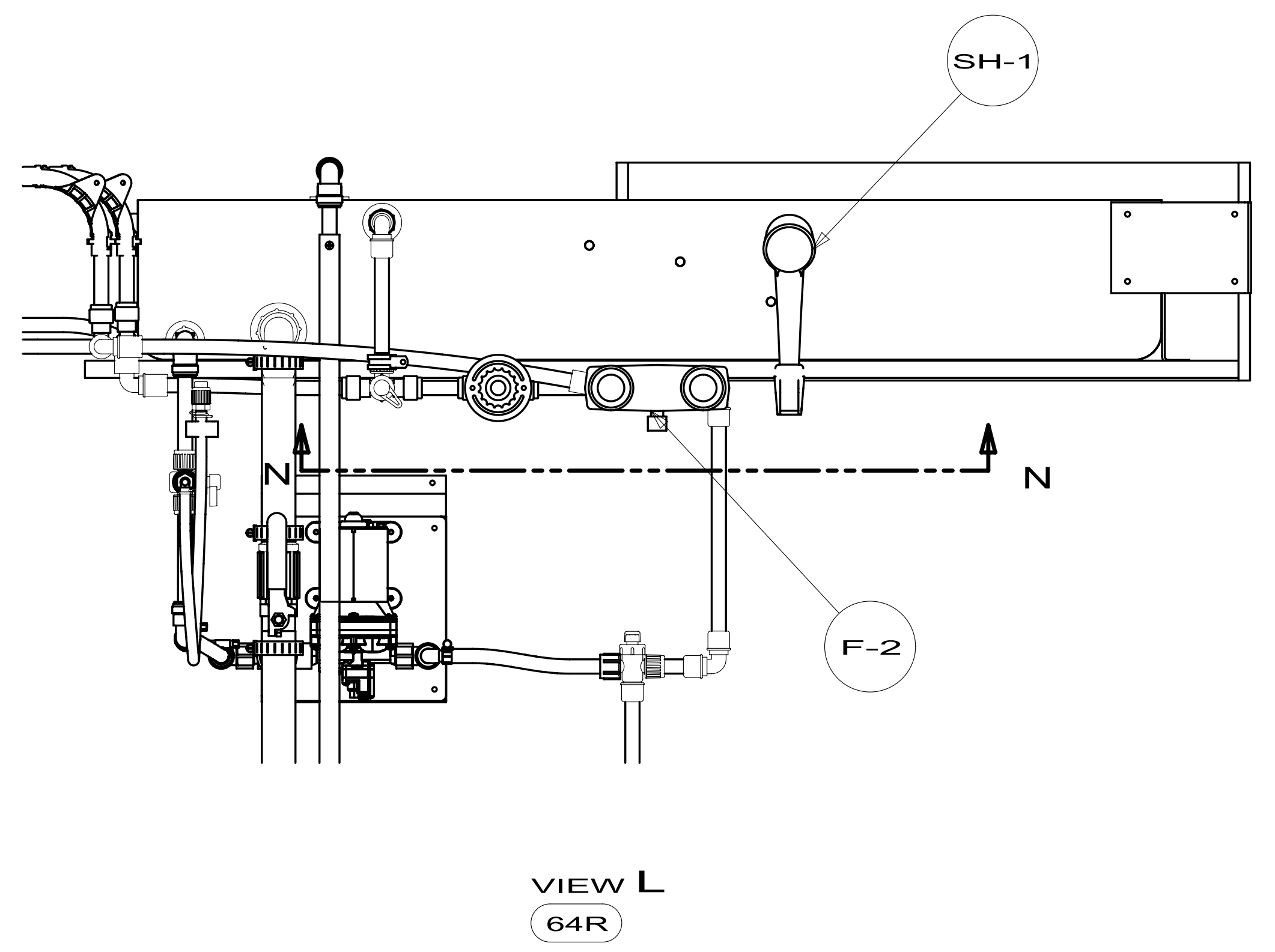
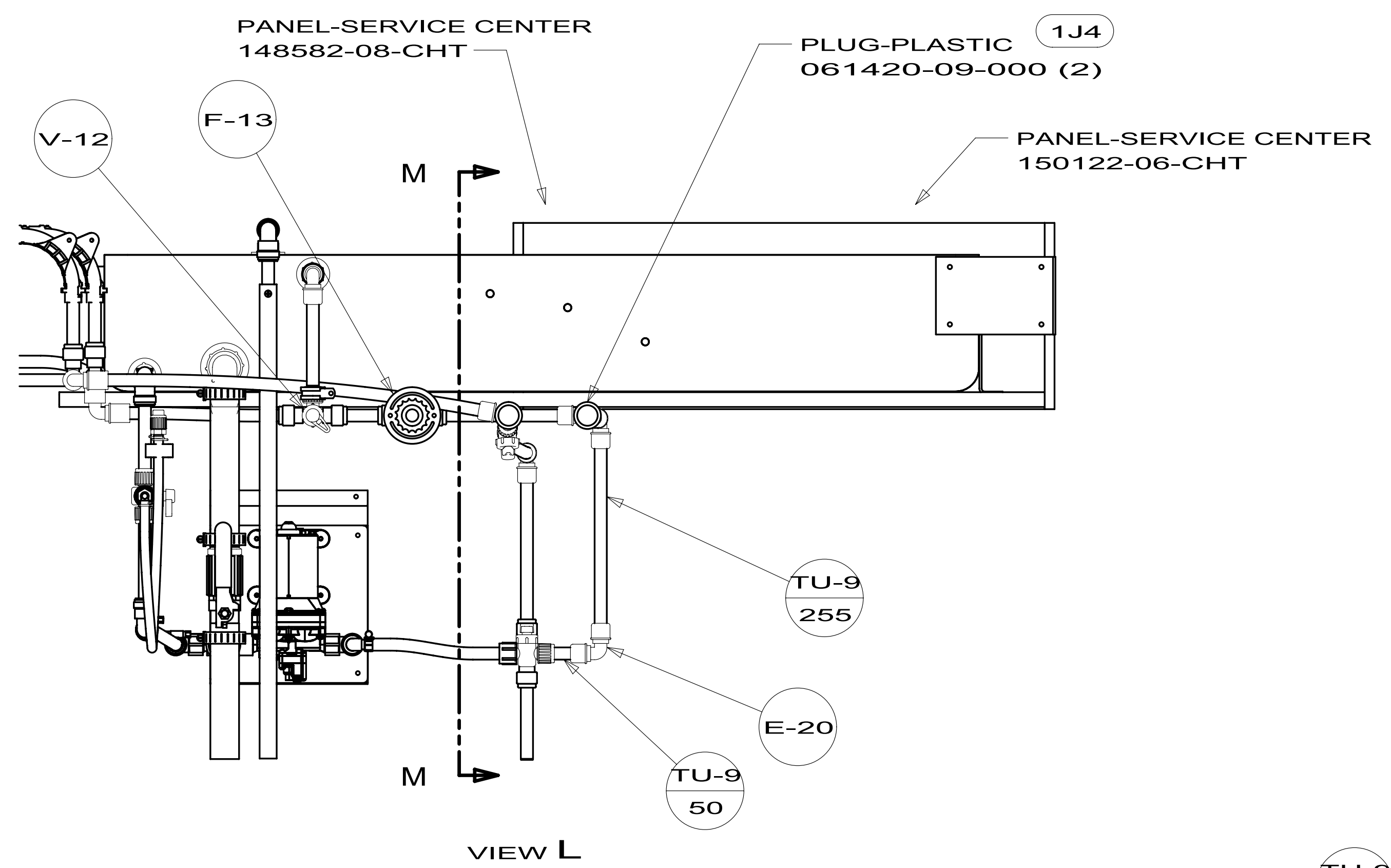


SECTION P-P



VIEW F (SHOWN W/OUT SERVICE PANEL)

FIRST USED	12 E36D
DO NOT SCALE DRAWING	
TITLE: WATER SYSTEM INSTL	
SHEET 4	PART NO 179157
REV	



FIRST USED	12 E36D		
TITLE:	DO NOT SCALE DRAWING		
TITLE:	WATER SYSTEM INSTL		
SHEET 5	PART NO	179157	REV