

FRONT OF COACH

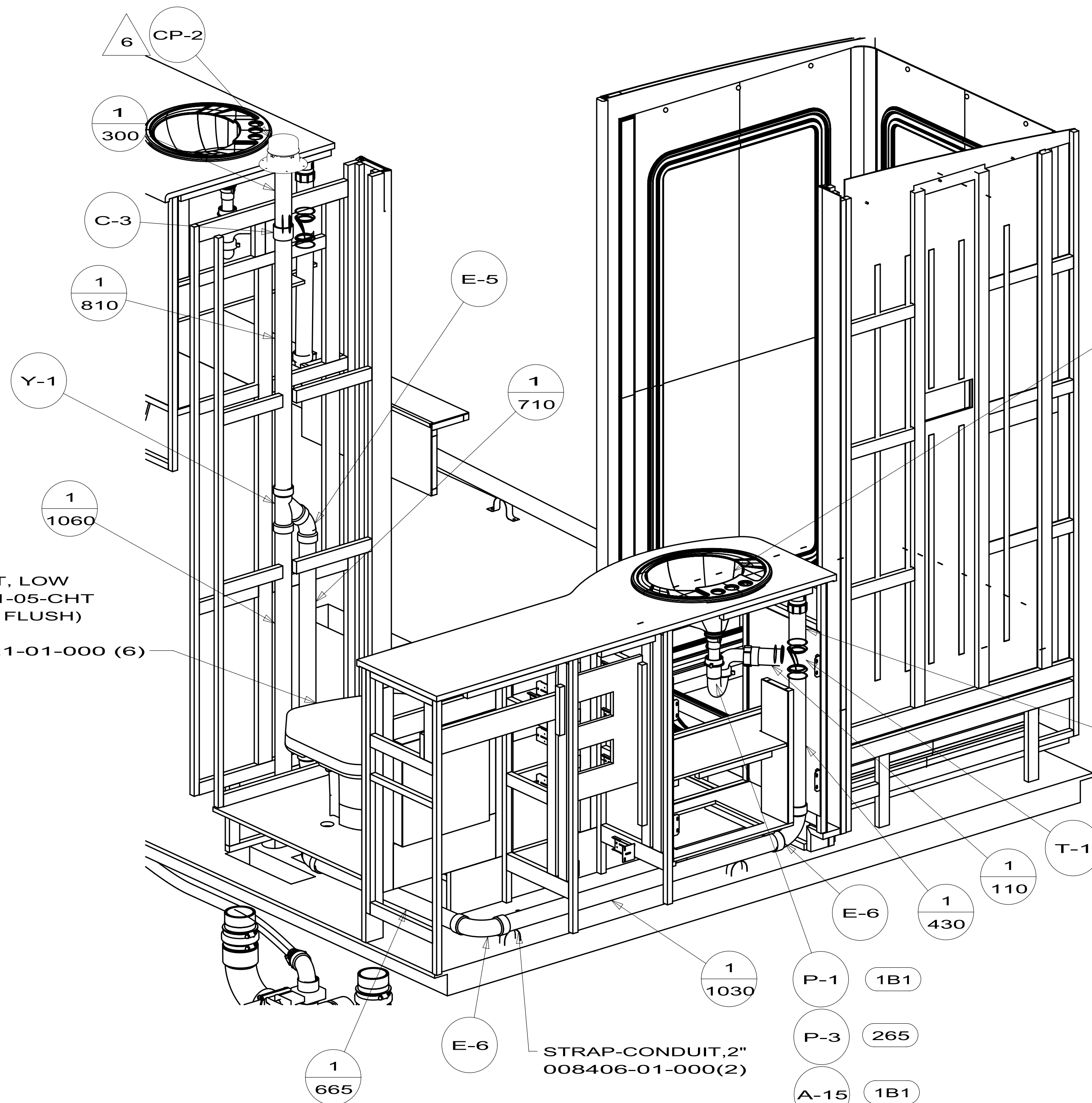
DETAIL C

- 265 CODES/STDS-CSA/CMVSS
- 1B1 CODES/STANDARDS-USA

		COPYRIGHT 2012 WINNEBAGO INDUSTRIES, INC.
DTR	ORIG. DATE	
CHKR	ALL DIMENSIONS ARE IN MILLIMETERS	
P.E.		
M.E.	FIRST USED	
DSNR	12 E35F	
UNSPECIFIED TOLERANCES ARE:		MATERIAL:
WHOLE DIM (X)	: 3	
ONE-PLACE (X.X)	:	
TWO-PLACE (X.XX)	:	
ANGLE	:	
THIRD ANGLE PROJECTION		
DO NOT SCALE DRAWING		REFER TO ES0018 FOR FASTENER TIGHTENING GUIDELINES
TITLE: DRAINAGE SYSTEM INSTL		
SHEET 1 OF 4	PART NO 179163	REV
REF:	1	

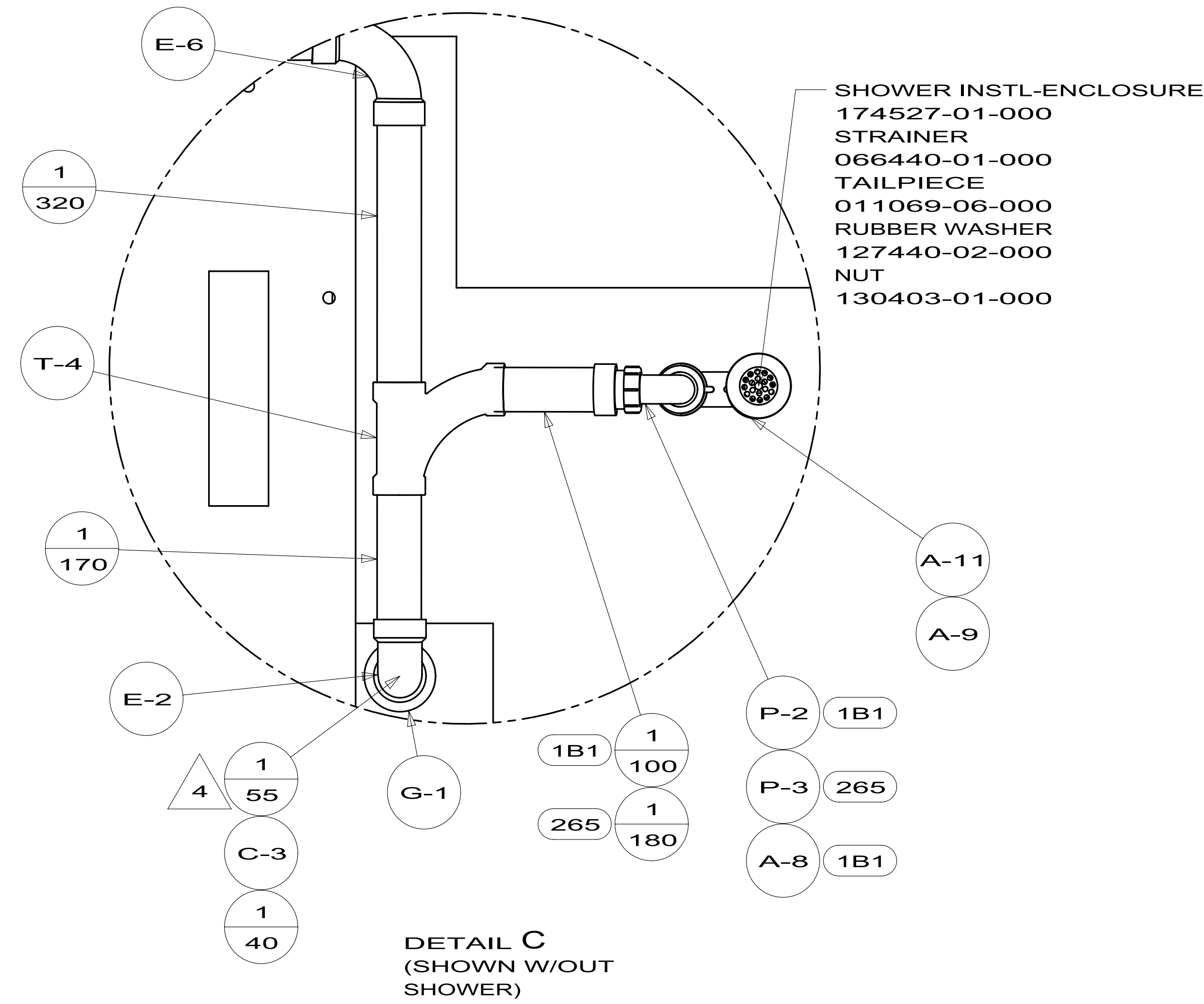
- NOTES:
7. USE TEFLON TAPE 010405-01-000 FOR PUMP TO A-12 CONNECTION.
 6. VENT PIPE MUST PROJECT 51 MIN AND 64 MAX ABOVE ROOF FOR PROPER FIT AND FUNCTION.
 5. SEAL AROUND SHOWER WITH SILICONE.
 4. SECURE VENT TUBES TO FLOOR WITH BRACKET 136878-01-CHT. CLAMP 062401-02-000 AND SCREW 000G67-10-12B.
 3. ALL PIPE AND FITTINGS TO BE ASSEMBLED WITH SOLVENT 004020-01-000 (US), 004020-02-000 (CAN).
 2. SLOPE OF TRAP ARM MUST BE 6 PER 305 mm.
 1. SLOPE OF HORIZONTAL PIPING TO BE MIN 3 PER 305 mm.

FOR DRAINAGE CALLOUTS SEE DWG NO 116229-01-000

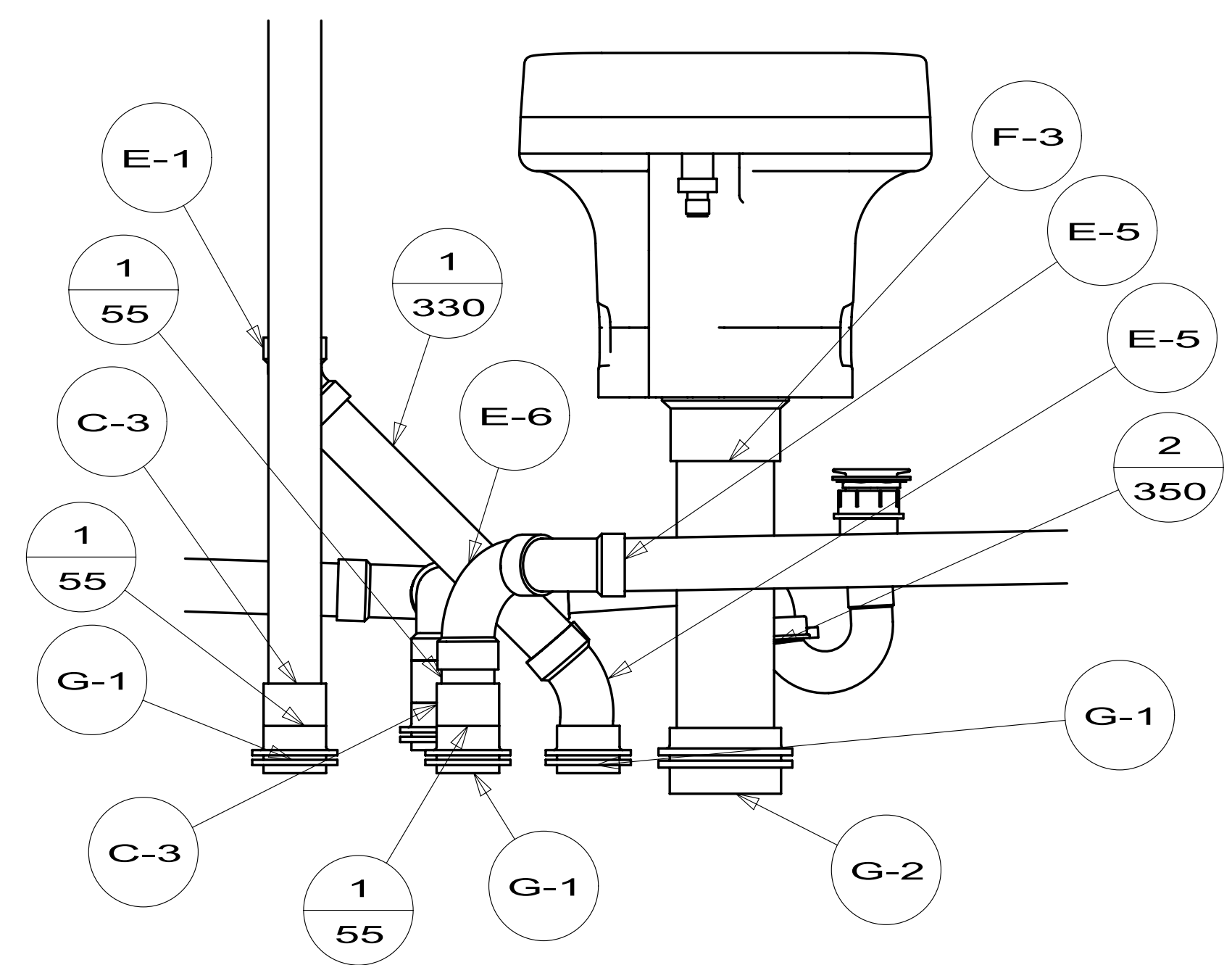


VIEW A

SINK-LAV
164615-01-CHT
STRAINER
106116-01-CHT
GASKET
106116-02-CHT
SEAL
(A/R)



DETAIL C
(SHOWN W/OUT
SHOWER)



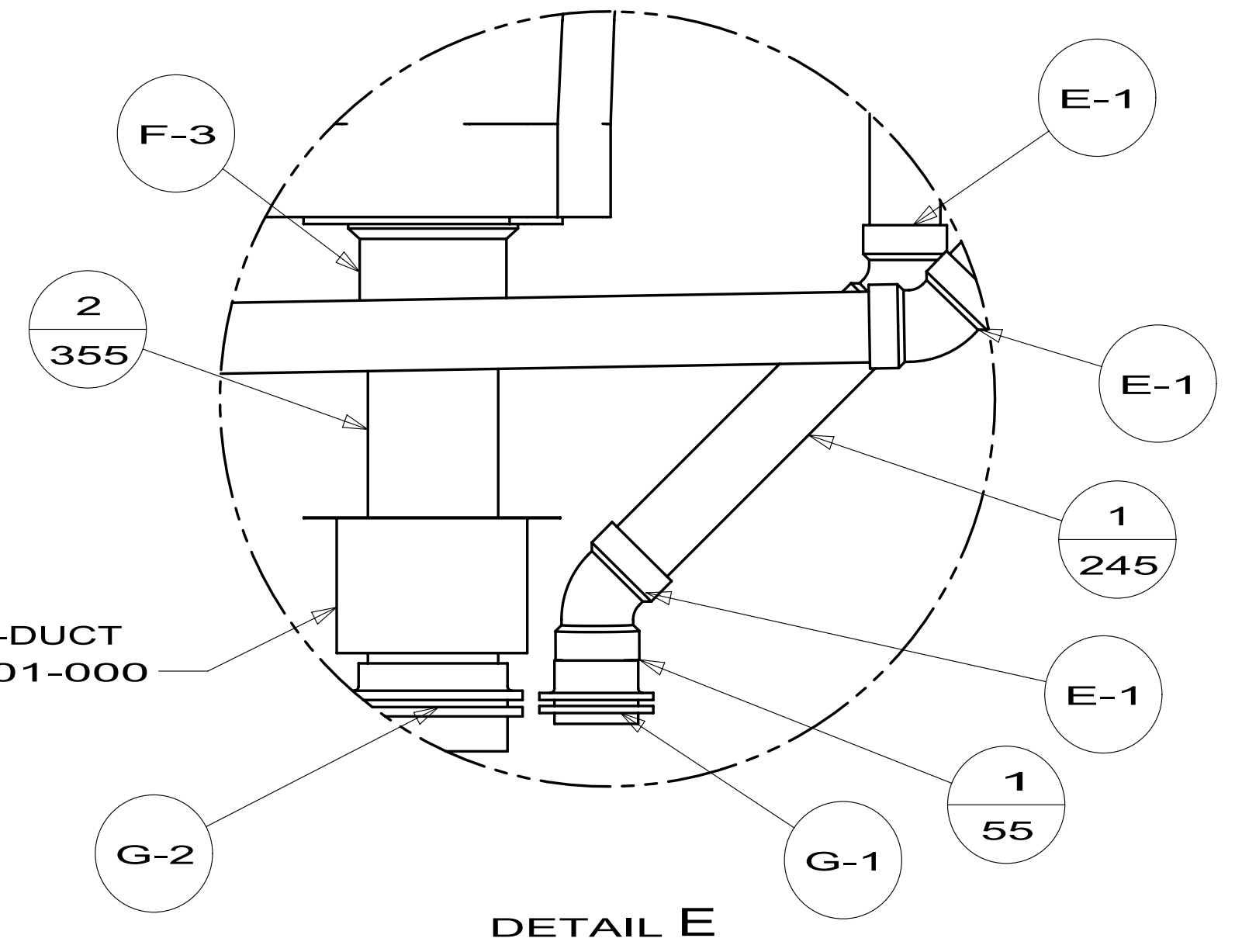
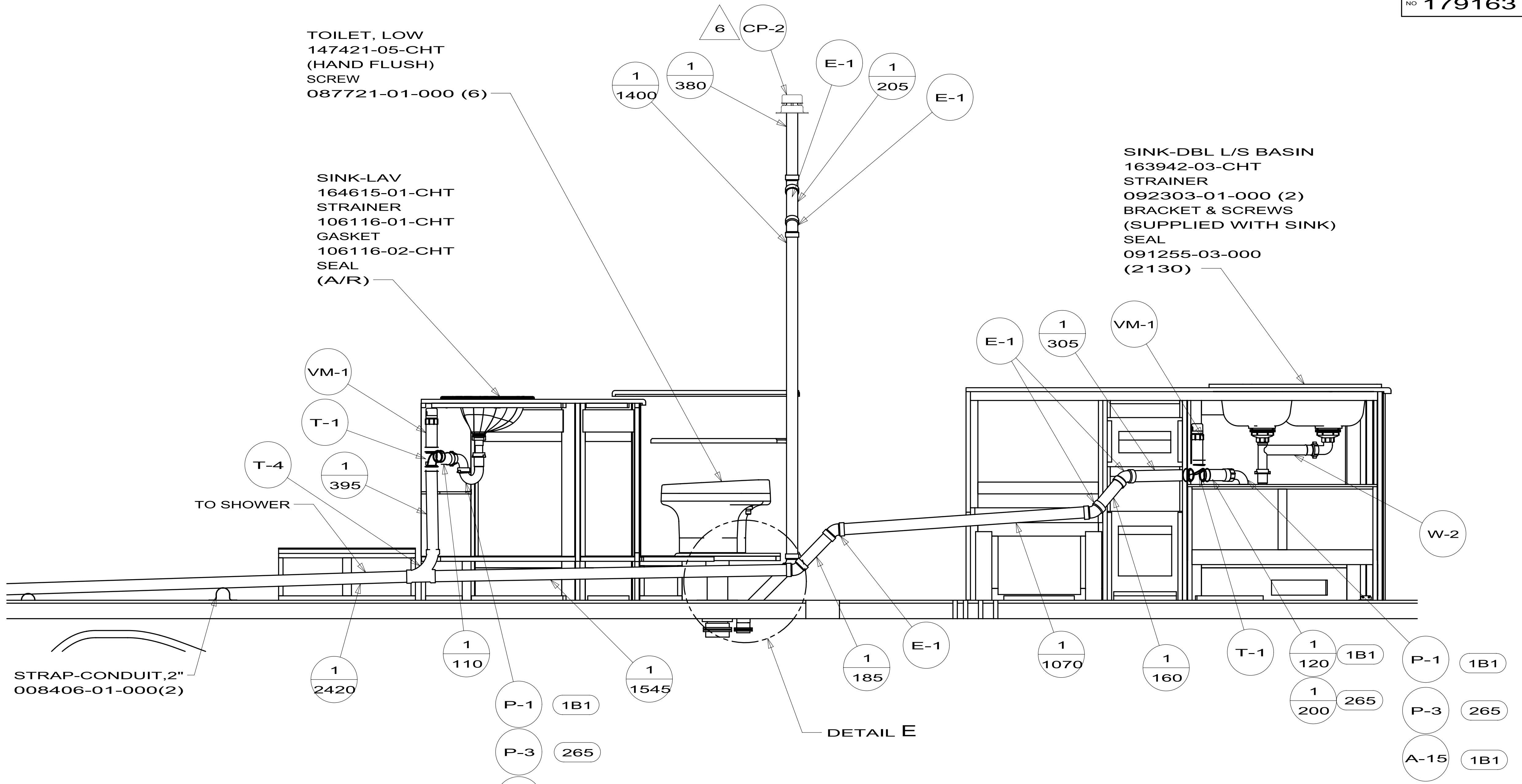
VIEW D
(SHOWN W/OUT CABINETS AND FLOOR)

FIRST USED	12 E35F	
TITLE:	DO NOT SCALE DRAWING	
	DRAINAGE SYSTEM INSTL	
SHEET 2	PART NO. 179163	REV

TOILET, LOW
147421-05-CHT
(HAND FLUSH)
SCREW
087721-01-000 (6)

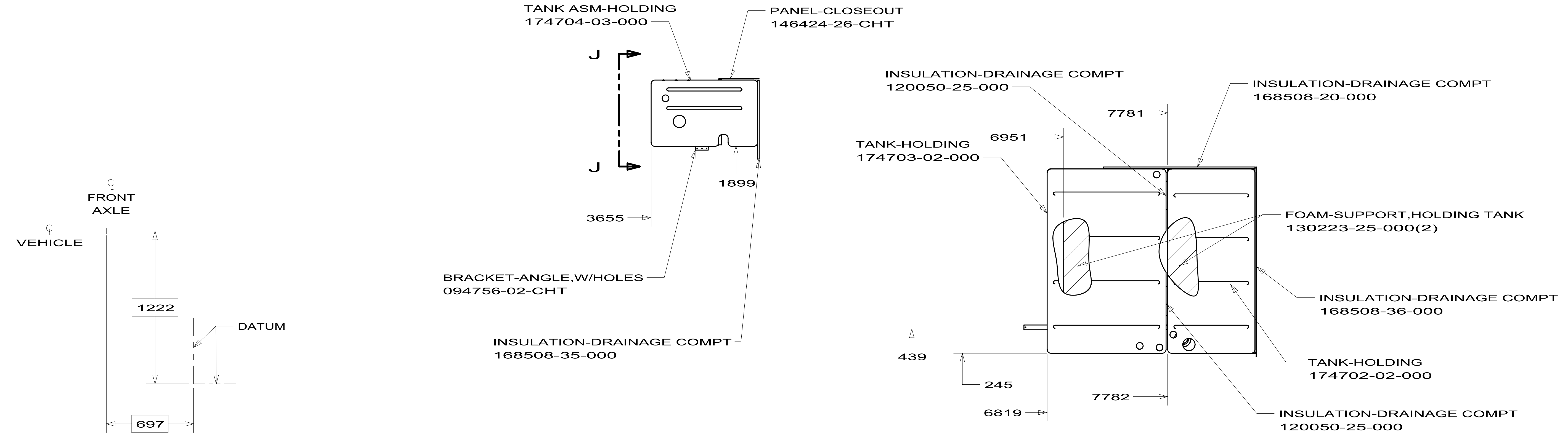
SINK-LAV
164615-01-CHT
STRAINER
106116-01-CHT
GASKET
106116-02-CHT
SEAL
(A/R)

SINK-DBL L/S BASIN
163942-03-CHT
STRAINER
092303-01-000 (2)
BRACKET & SCREWS
(SUPPLIED WITH SINK)
SEAL
091255-03-000
(2130)



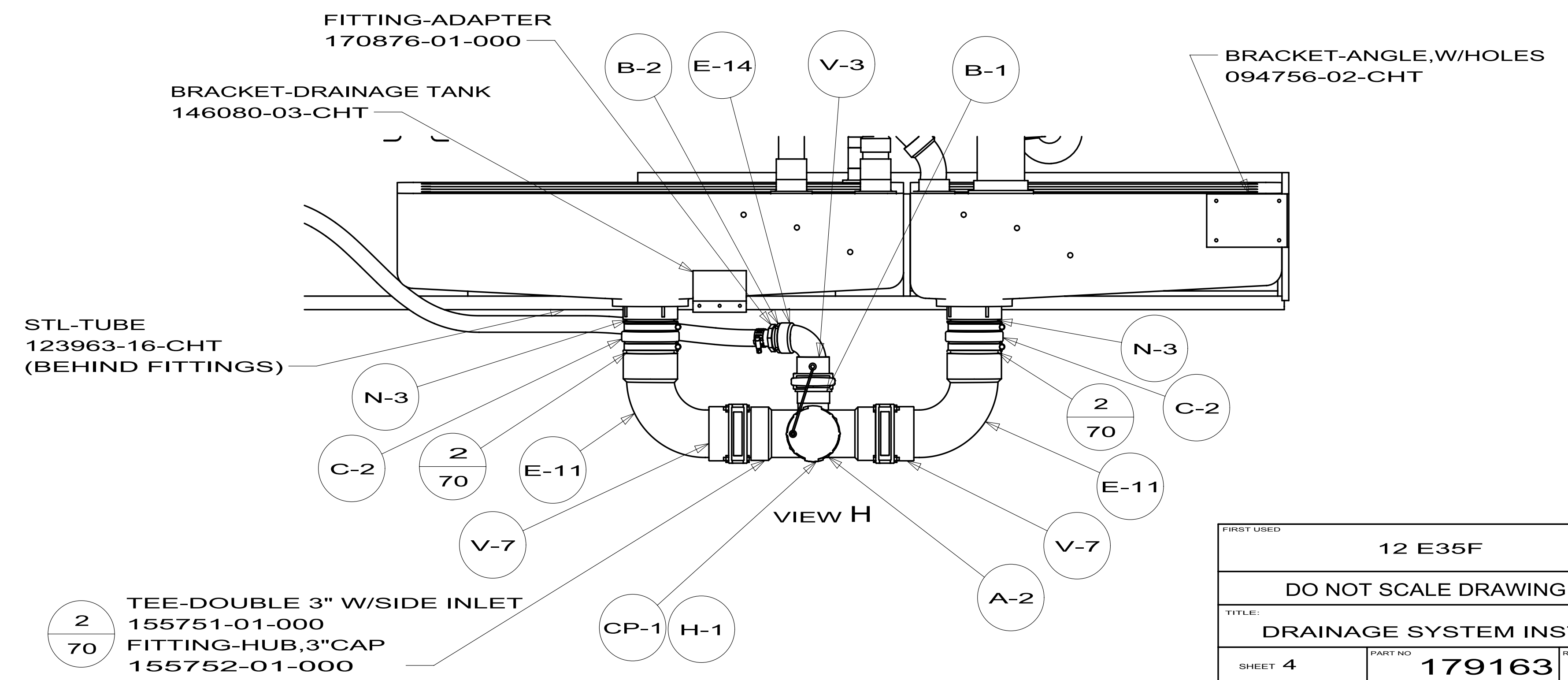
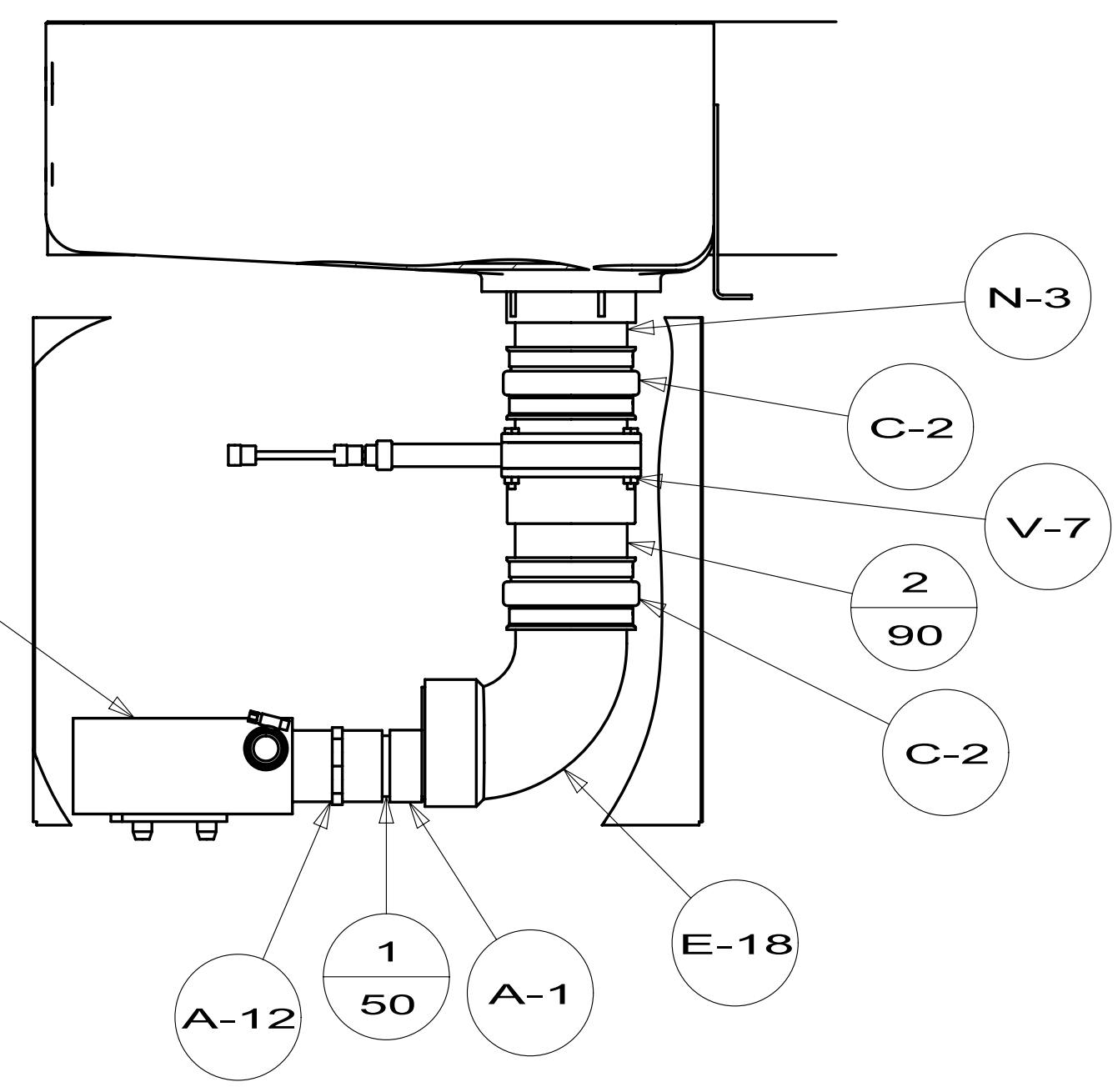
ADAPTER-DUCT
143289-01-000

FIRST USED	12 E35F	
DO NOT SCALE DRAWING		
TITLE: DRAINAGE SYSTEM INSTL		
SHEET 3	PART NO 179163	REV

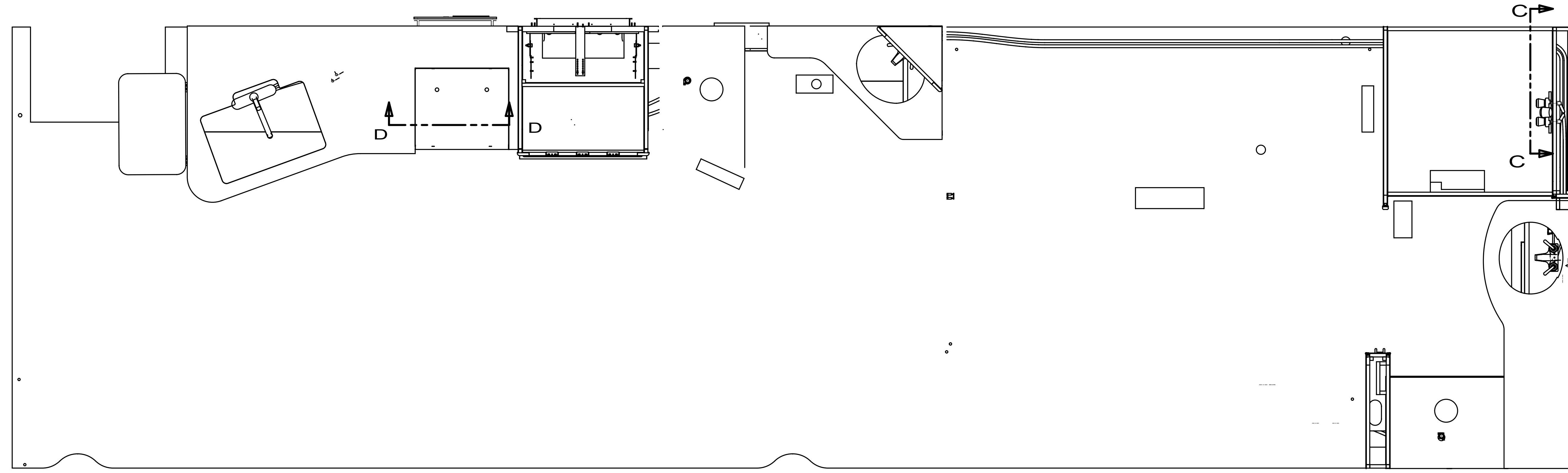


TOP VIEW SHOWING TANKS AND DRAINS

- PUMP-MACERATION 165762-02-000
- SCREW 000G39-08-24U(4)
- HOSE 177021-01-000 (5700)
- CLAMP 062401-01-000 (2)
- WIRE TIES 008343-03-000 (6)



FIRST USED	12 E35F
DO NOT SCALE DRAWING	
TITLE: DRAINAGE SYSTEM INSTL	
SHEET 4	PART NO 179163 REV



- (1J4) EXT WASH STATION - WITHOUT
- (64R) EXTERIOR WASH STATION
- (53F) WATER HEATER-ELEC. IGNITION
- (53D) WTR HTR-6GAL/ELE/LP/MOTOR/RAID

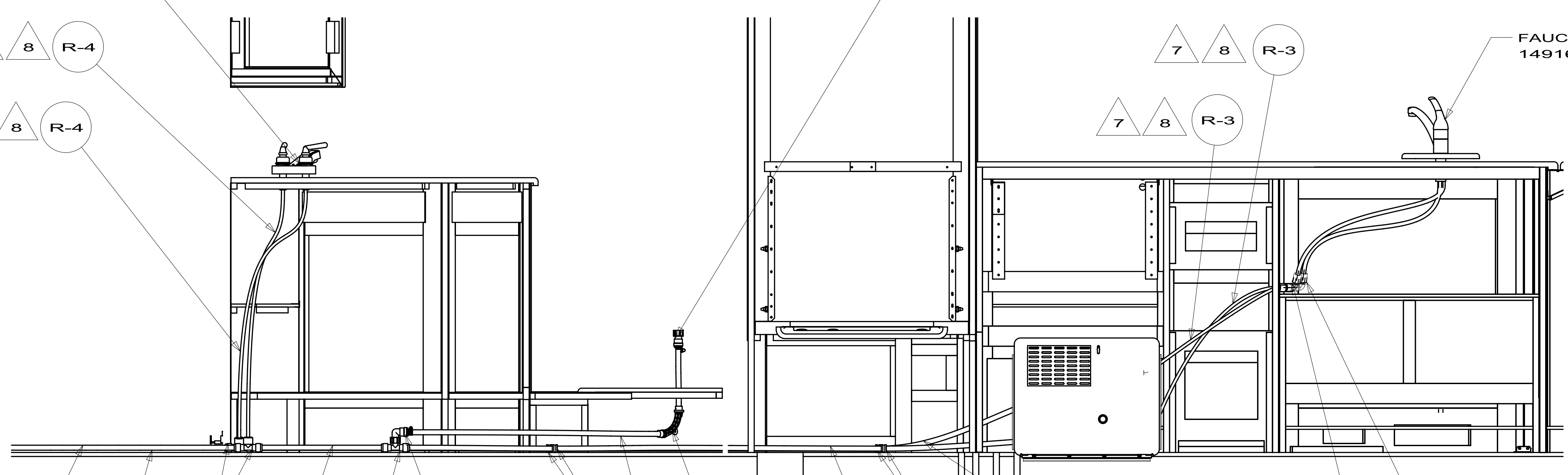
- NOTES:
1. PLASTIC FITTINGS TO BE SEALED WITH SEALANT 084456-01-000.
 2. TUBING TO BE INSTALLED WITH SUFFICIENT SLOPE TO PROVIDE DRAINAGE TO NEAREST VALVE.
 3. ALL TUBING TO BE SECURED AT 1200 INTERVALS MAXIMUM WITH CLAMP 010495-01-000 AND SCREW 000G67-10-12B OR EQUIVALENT.
 4. FLUSHING SYSTEM REQUIRES 125697-06-000 INSTRUCTION SHEET.
 5. ADD TEFLON TAPE 010405-02-000.
 6. ADD TEFLON TAPE 010405-01-000.
 7. TAPE FITTING TO TUBE BEFORE CABINET SET TO PREVENT FITTING FROM MOVING.
 8. LABEL HOT AND COLD SUPPLY TUBES.
 9. ADD PIPE WRAP (LADDER SCRAP) INSULATION HERE.
 10. CHECK VALVE IS INSTALLED TO PREVENT WATER FROM ENTERING WATER HEATER.
 11. CHECK VALVE IS INSTALLED TO PREVENT WATER FROM LEAVING WATER HEATER.

FOR
WATER
CALLOUTS
SEE DWG NO
116230-01-000

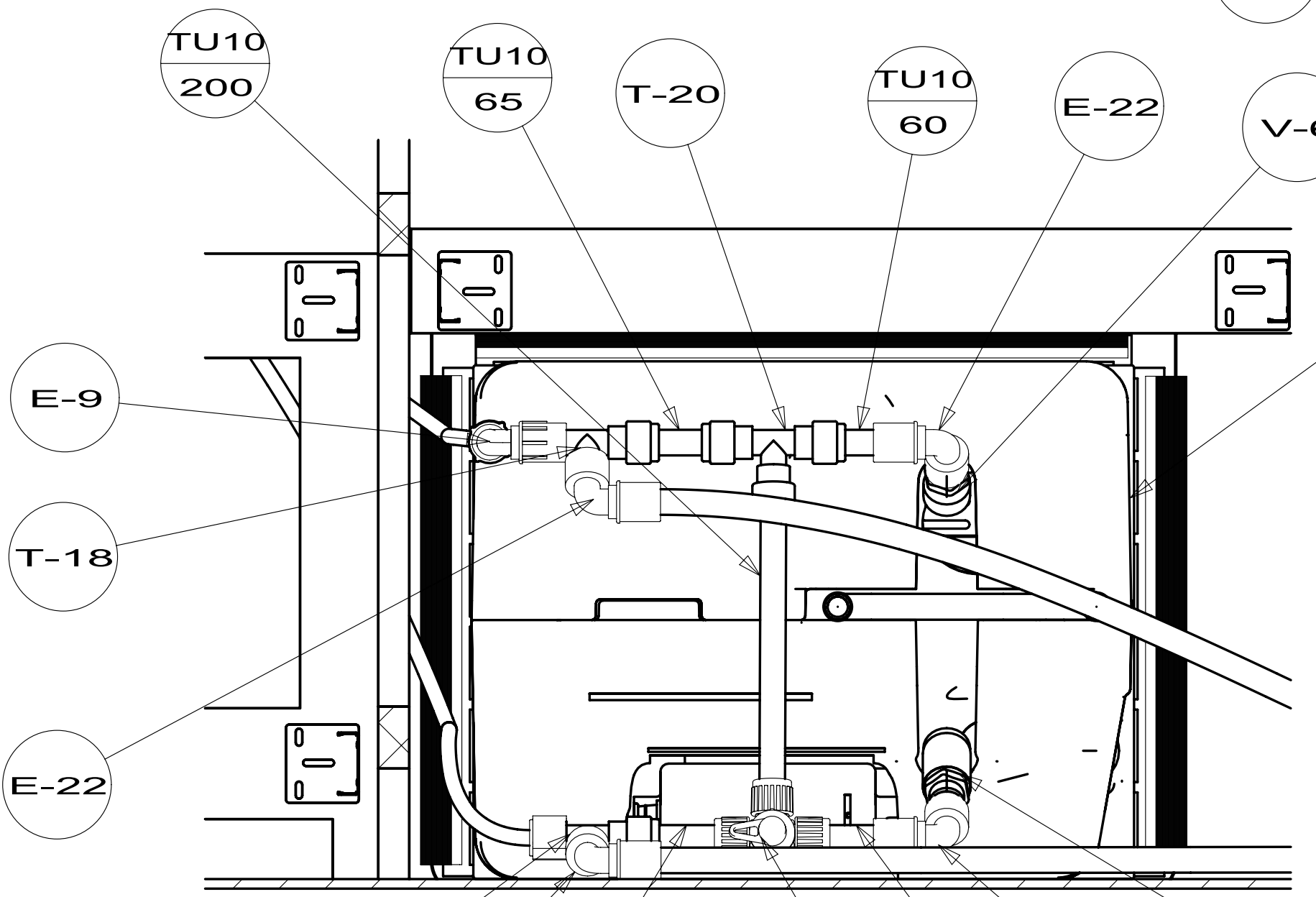
		COPYRIGHT 2011 WINNEBAGO INDUSTRIES, INC.
DTR	ORIG. DATE	ALL DIMENSIONS ARE IN MILLIMETERS
CHKR		
P.E.		
M.E.	FIRST USED	
DSNR		12 E35F
UNSPECIFIED TOLERANCES ARE: WHOLE DIM (X) : 3 ONE-PLACE (X.X) : 1.5 TWO-PLACE (X.XX) : 0.50 ANGLE : 1°		MATERIAL: REFER TO ES0018 FOR FASTENER TIGHTENING GUIDELINES
THIRD ANGLE PROJECTION		
DO NOT SCALE DRAWING		TITLE:
		WATER SYSTEM INSTL
SHEET 1 OF 5	PART NO	REV
	178924	
REF:	1	6/10/2011

FAUCET-LAV
148886-03-CHT

FAUCET-GALLEY, SGL CONTROL
149164-01-CHT

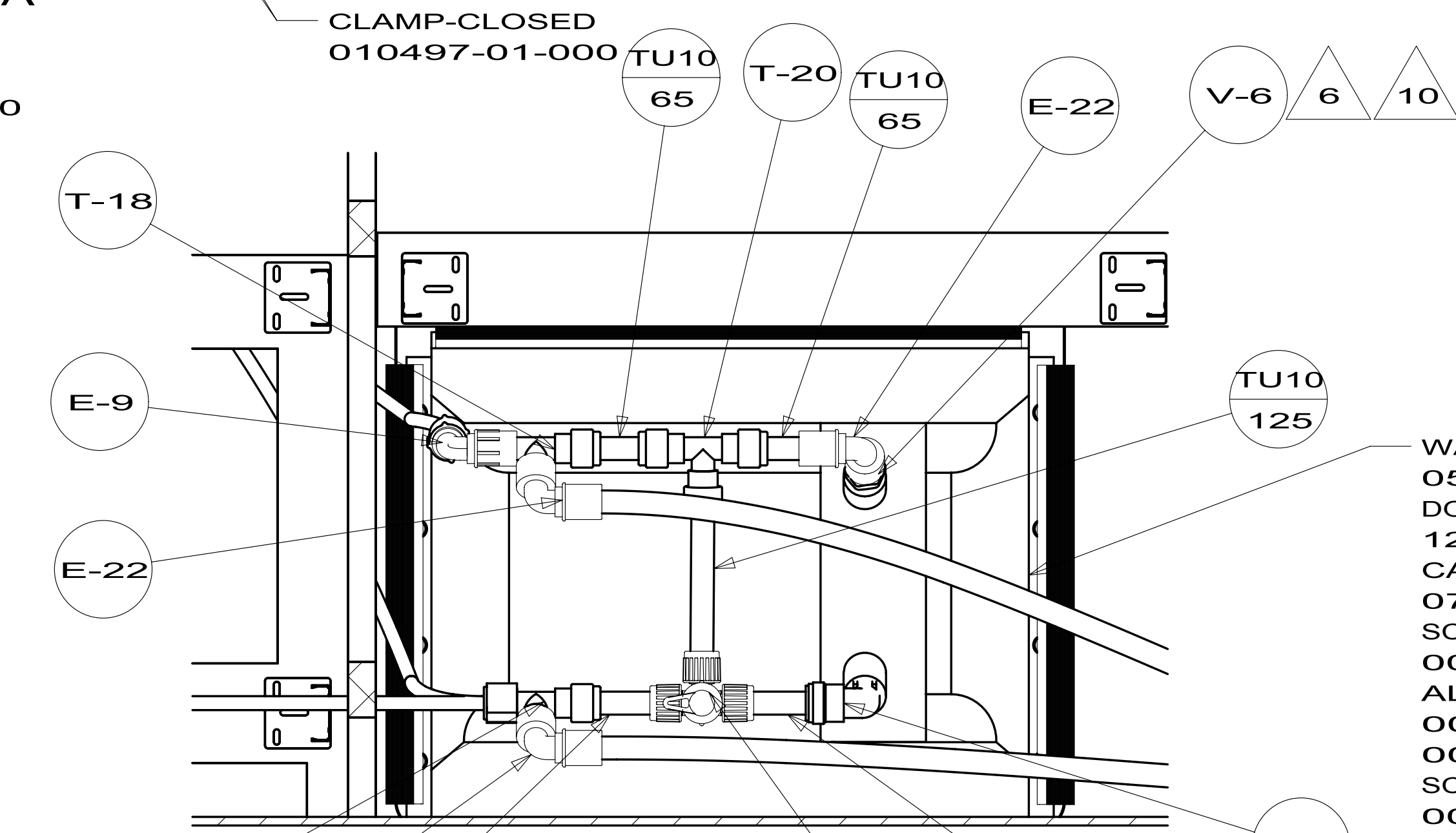


VIEW A



SECTION D-D
53D

- WATER HEATER
145541-02-000
- DOOR
125420-06-CHT
- CABLE
076767-03-000
- SCREW
000G11-06-08B (2)
- AL EXTR
002726-51-018 (2)
- SCREW
002726-51-017 (2)
- SCREW
000G39-10-169 (18)
- SEALANT



SECTION D-D
53F

- WATER HEATER
051391-03-000
- DOOR
125420-06-CHT
- CABLE
076767-03-000
- SCREW
000G11-06-08B (2)
- AL EXTR
002726-51-018 (2)
- SCREW
002726-51-017 (2)
- SCREW
000G39-10-169 (18)
- SEALANT

FIRST USED	12 E35F	
TITLE:	DO NOT SCALE DRAWING	
TITLE:	WATER SYSTEM INSTL	
SHEET 2	PART NO	178924
	REV	

8

7

6

5

4

3

2

1

FAUCET-LAV
148886-03-CHT

TO TOILET

A-24

U-2

CH-3

TU-8
1000

CLAMP-CLOSED
010497-01-000

TU10
2225

64R

TU10
2240

1J4

TU-9
2080

E-22
6

E-22
6

TU10
2025

TU-9
2025

R-5
7 8

R-5
7 8

DETAIL E

VIEW B

E-9

E-22

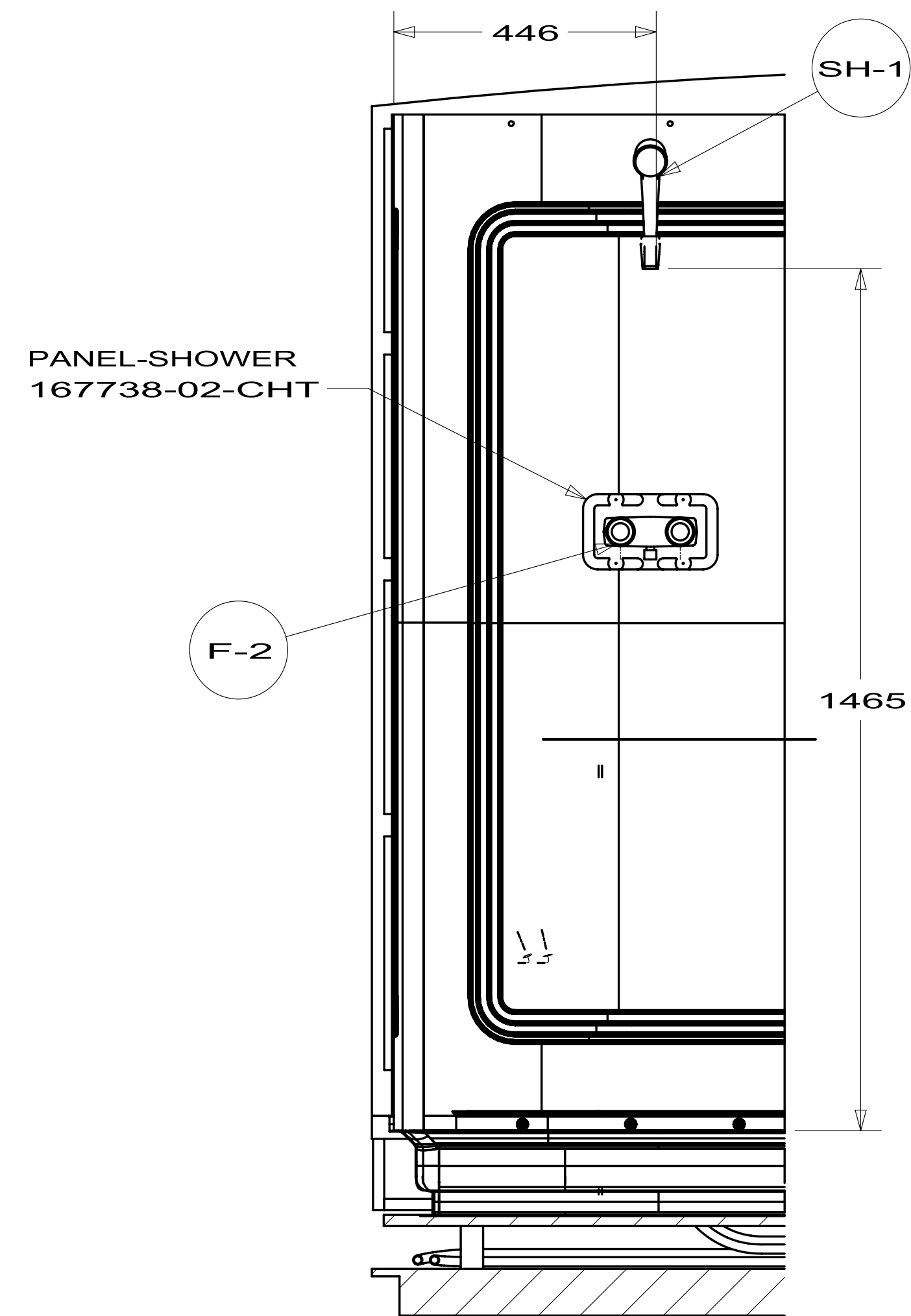
T-22

TU10
70

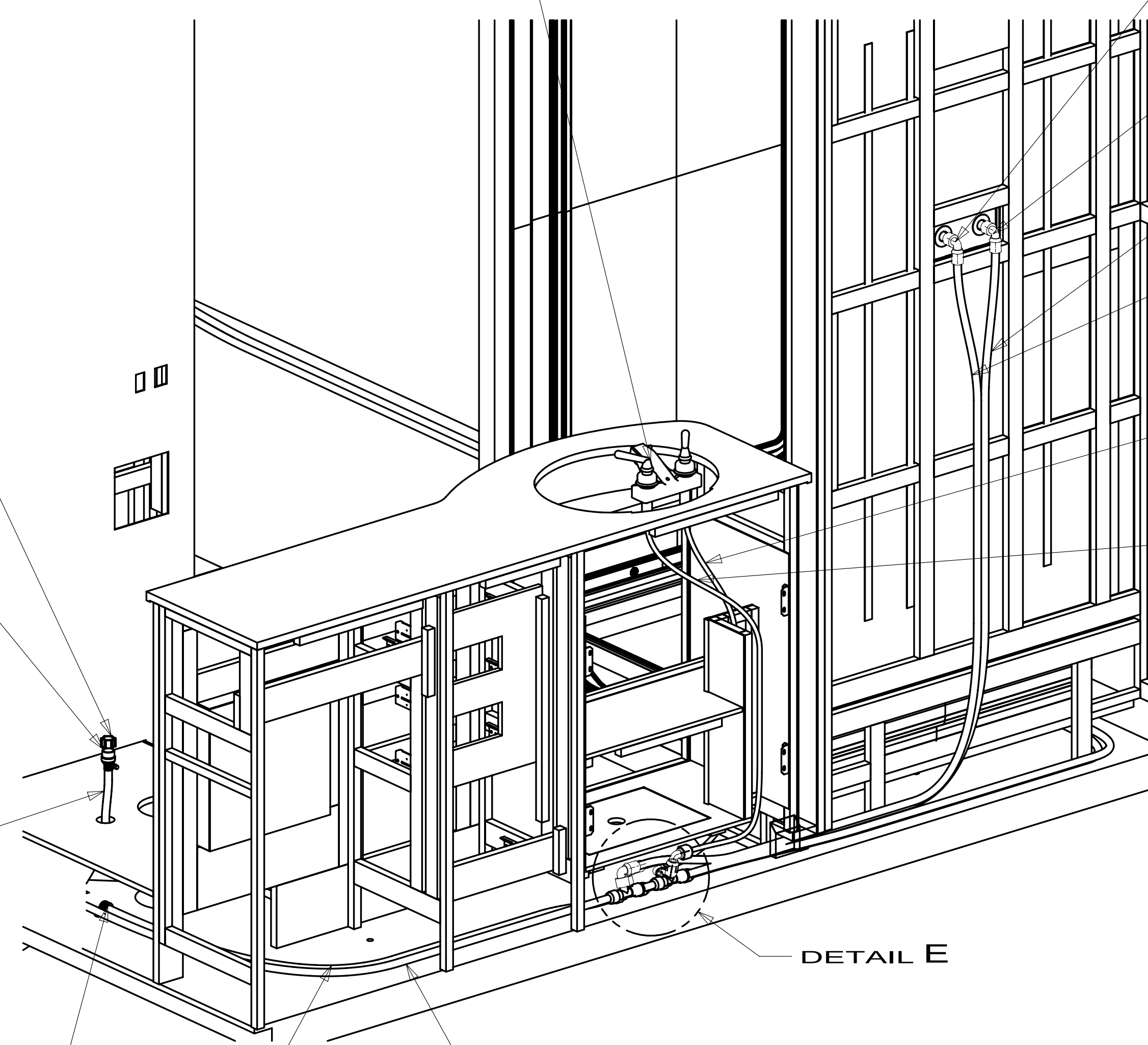
TU-9
70

DETAIL E

T-22



SECTION C-C



FIRST USED	12 E35F		
TITLE:	DO NOT SCALE DRAWING		
	WATER SYSTEM INSTL		
SHEET 3	PART NO	178924	REV

TANK ASM-WATER, 70 GAL
174701-02-000

INSULATION-DRAINAGE COMPT
168508-32-000

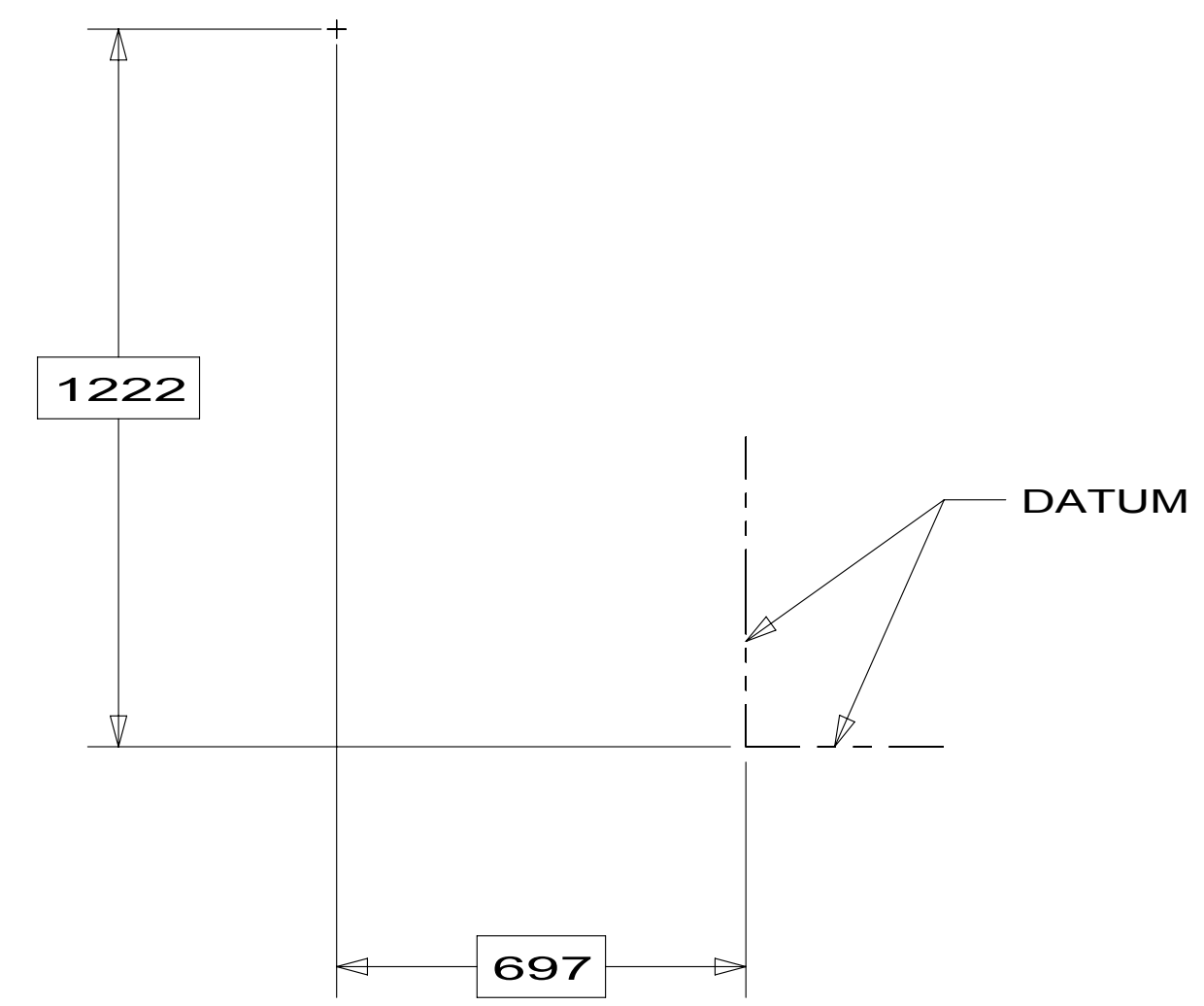
STL-TUBE
123963-34-CHT

BRACKET-ANGLE, W/HOLES
094756-02-CHT

INSULATION-DRAINAGE COMPT
168508-50-000

INSULATION-DRAINAGE COMPT
168508-50-000

INSULATION-DRAINAGE COMPT
168508-50-000



SHOWING ONLY TANKS AND DRAINS

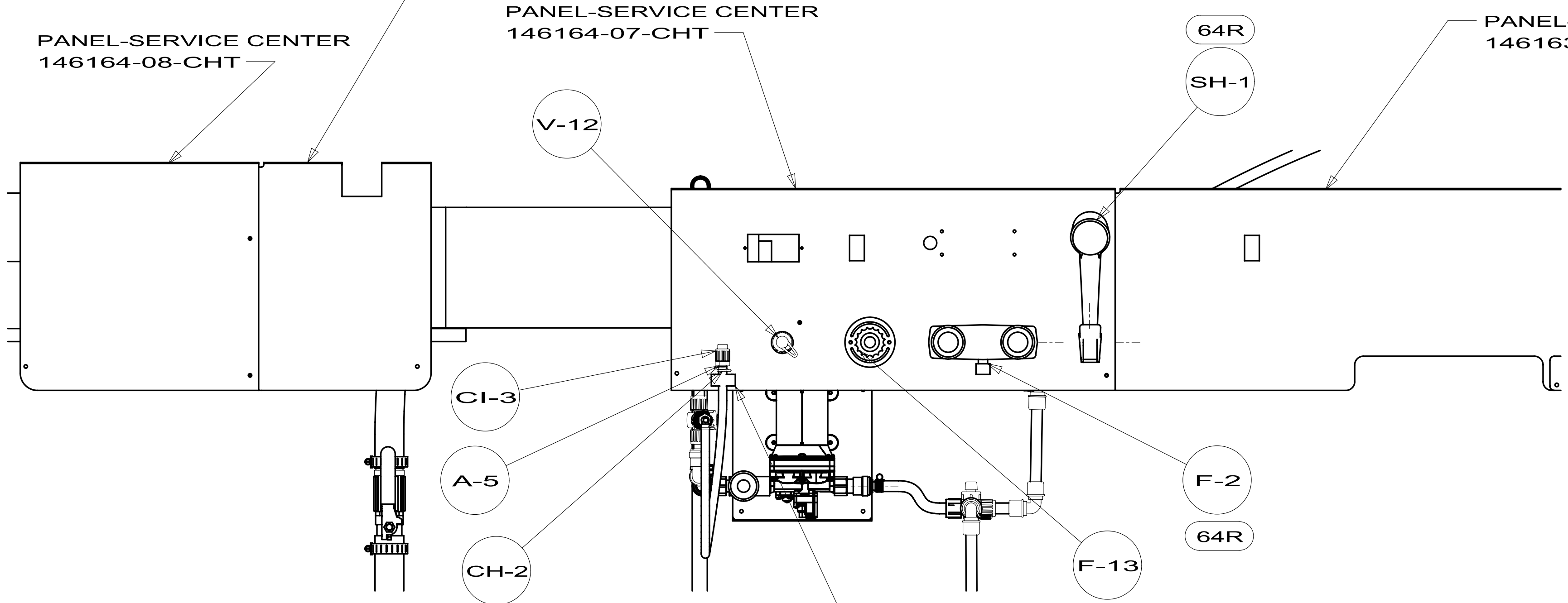
PANEL-SERVICE CENTER
146163-06-CHT

PANEL-SERVICE CENTER
146164-08-CHT

PANEL-SERVICE CENTER
146164-07-CHT

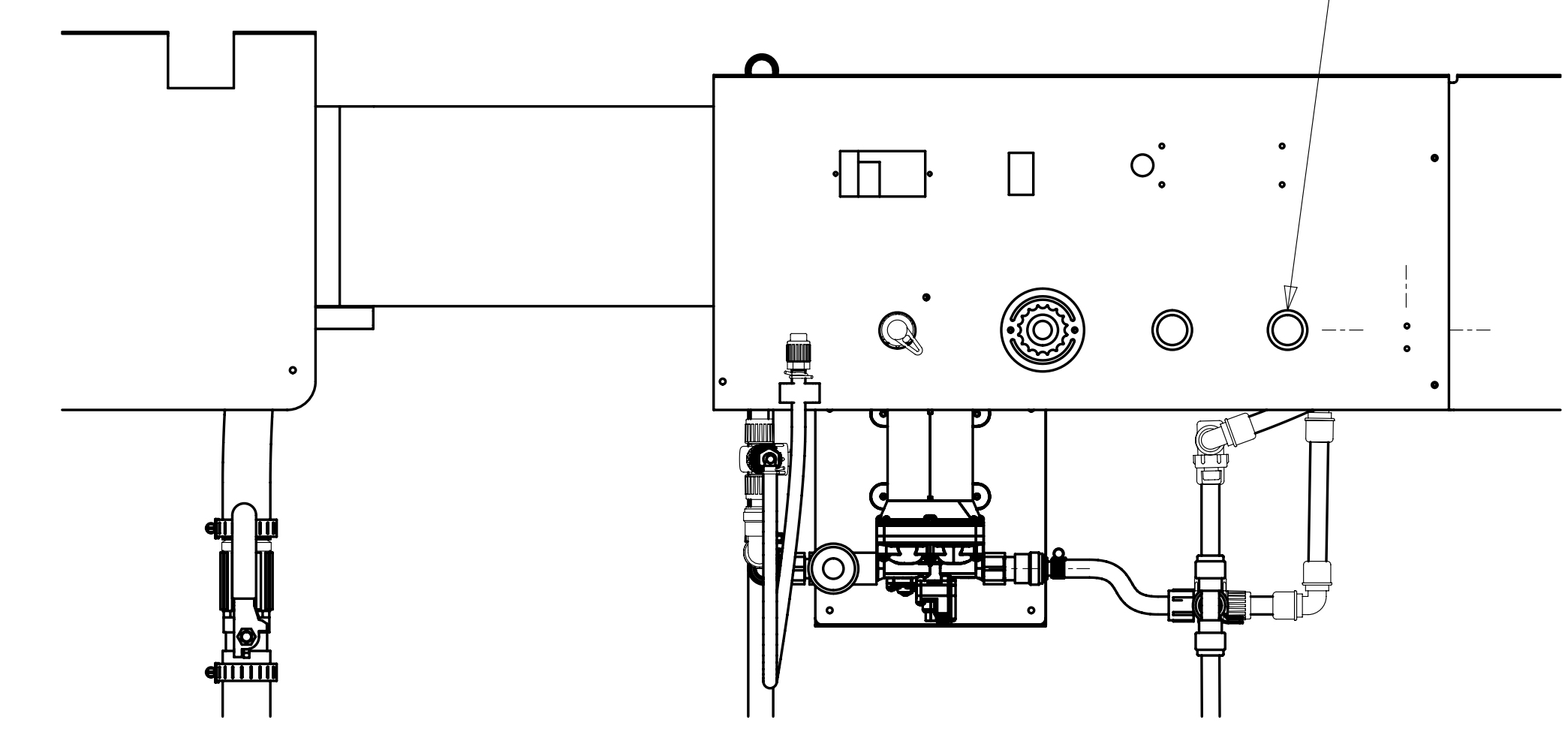
PANEL-SERVICE CENTER
146163-07-CHT

PLUG-PLASTIC
061420-09-000 (2)



CLIP-GRIPPER
091952-03-000

VIEW F



VIEW F

1J4

FIRST USED	12 E35F	
TITLE:	DO NOT SCALE DRAWING	
	WATER SYSTEM INSTL	
SHEET 4	PART NO 178924	REV

