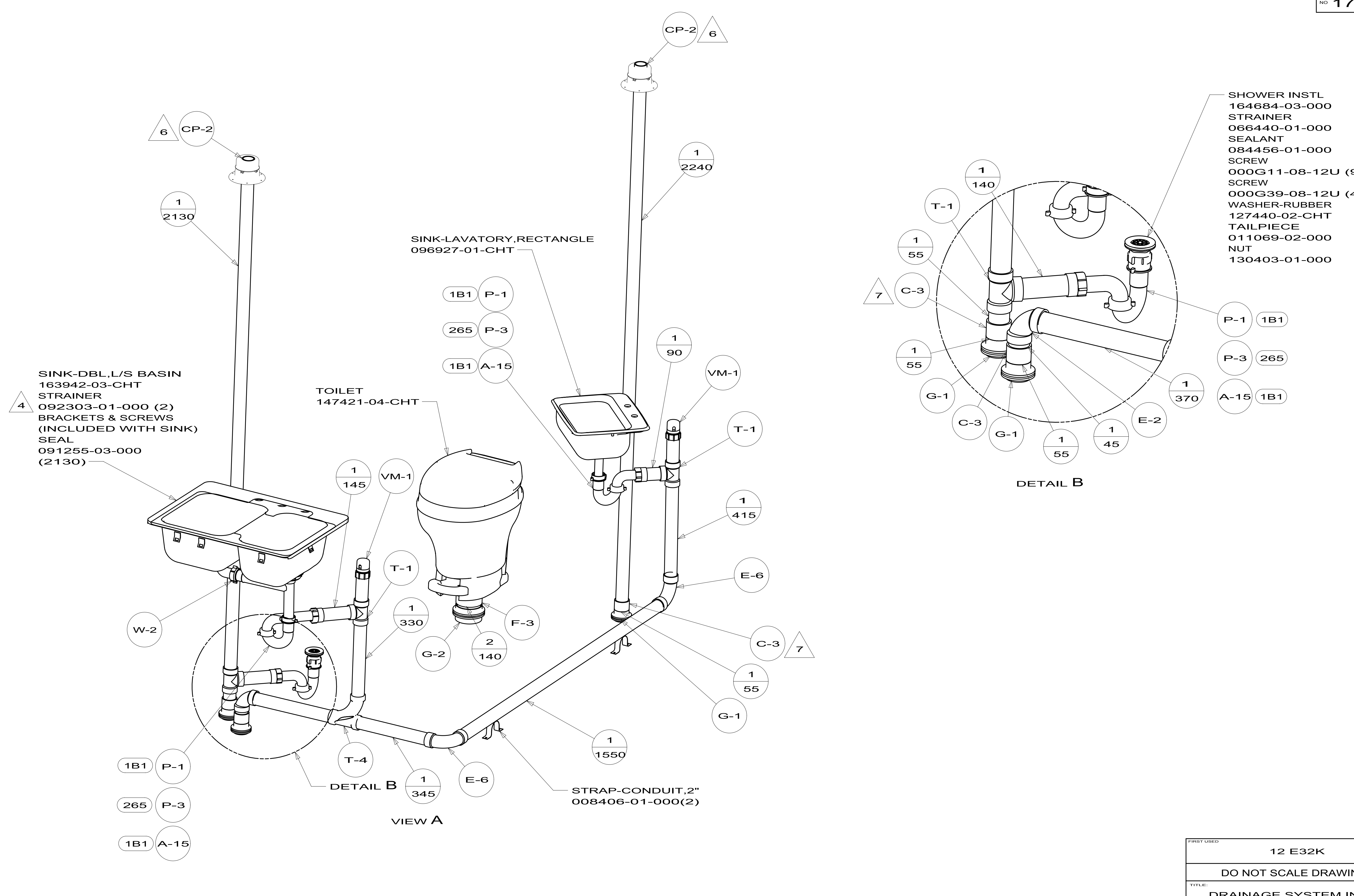


8. SECURE DRAINAGE PIPES TO CABINET USING WIRE TIE 108046-02-000, AND SCREW 000G67-10-12B AT INTERVALS OF NOT MORE THAN 4 FEET APART.
7. SECURE VENT PIPE TO FLOOR WITH CLAMP 062401-02-000 (2), SCREW 000G67-10-12B (2), BRACKET 136878-01-CHT (2).
6. VENT PIPE MUST PROJECT 51 MIN AND 64 MAX ABOVE ROOF FOR PROPER FIT AND FUNCTION.
5. SEAL AROUND SHOWER WITH SILICONE.
4. USE SMOOTH PLUMBERS PUTTY 167459-01-000 TO SEAL STRAINER (.2 PER STRAINER).
3. ALL PIPE AND FITTINGS TO BE ASSEMBLED WITH SOLVENT 004020-01-000 (USA), 004020-02-000 (CAN)
2. SLOPE OF TRAP ARM MUST BE 6 PER 305 mm.
1. SLOPE OF HORIZONTAL PIPING TO BE MINIMUM OF 3 PER 305 mm.

NOTES:

		COPYRIGHT 2011 WINNEBAGO INDUSTRIES, INC.
DTR	ORIG. DATE	
CHKR	ALL DIMENSIONS ARE IN MILLIMETERS	
P.E.		
M.E.	FIRST USED	
DSNR	12 E32K	
UNSPECIFIED TOLERANCES ARE:		MATERIAL:
WHOLE DIM (X)	: 3	
ONE-PLACE (X.X)	: 1.5	
TWO-PLACE (X.XX)	: 0.50	
ANGLE	: 1°	
THIRD ANGLE PROJECTION		
DO NOT SCALE DRAWING		REFER TO ES0018 FOR FASTENER TIGHTENING GUIDELINES
TITLE: <b>DRAINAGE SYSTEM INSTL</b>		
SHEET 1 OF 3	PART NO	178807
REF:	1	

FOR  
DRAINAGE  
CALLOUTS  
SEE DWG NO  
116229-01-000



SINK-DBL,L/S BASIN  
163942-03-CHT  
STRAINER  
092303-01-000 (2)  
BRACKETS & SCREWS  
(INCLUDED WITH SINK)  
SEAL  
091255-03-000  
(2130)

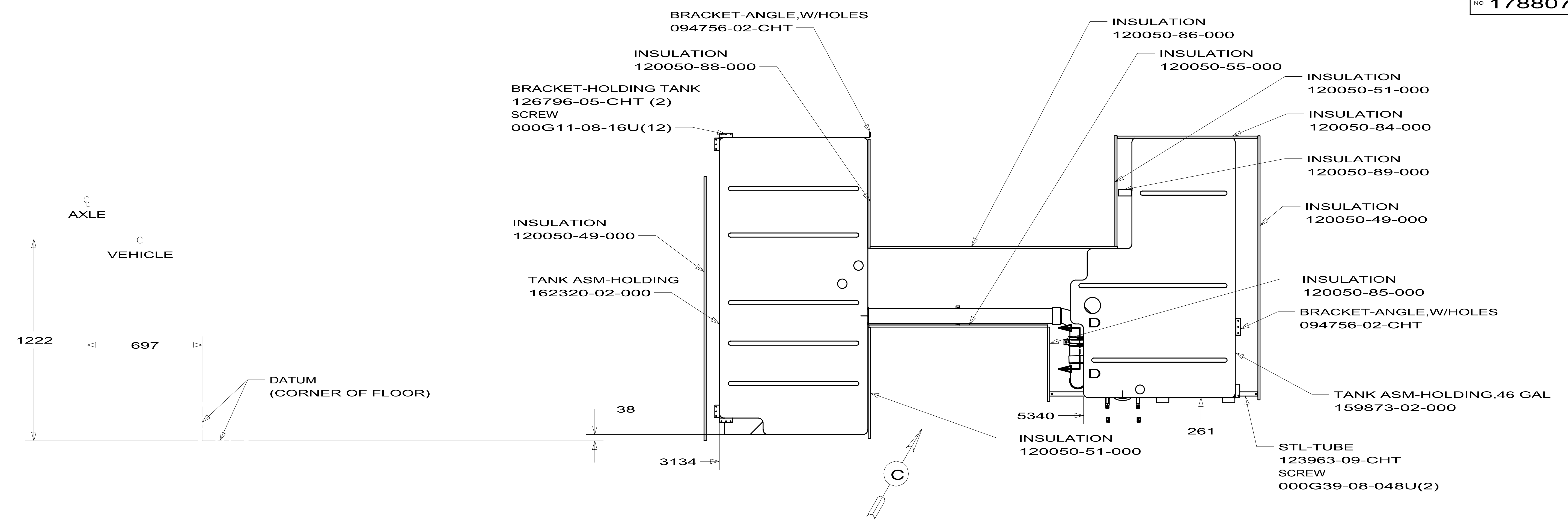
SINK-LAVATORY,RECTANGLE  
096927-01-CHT

TOILET  
147421-04-CHT

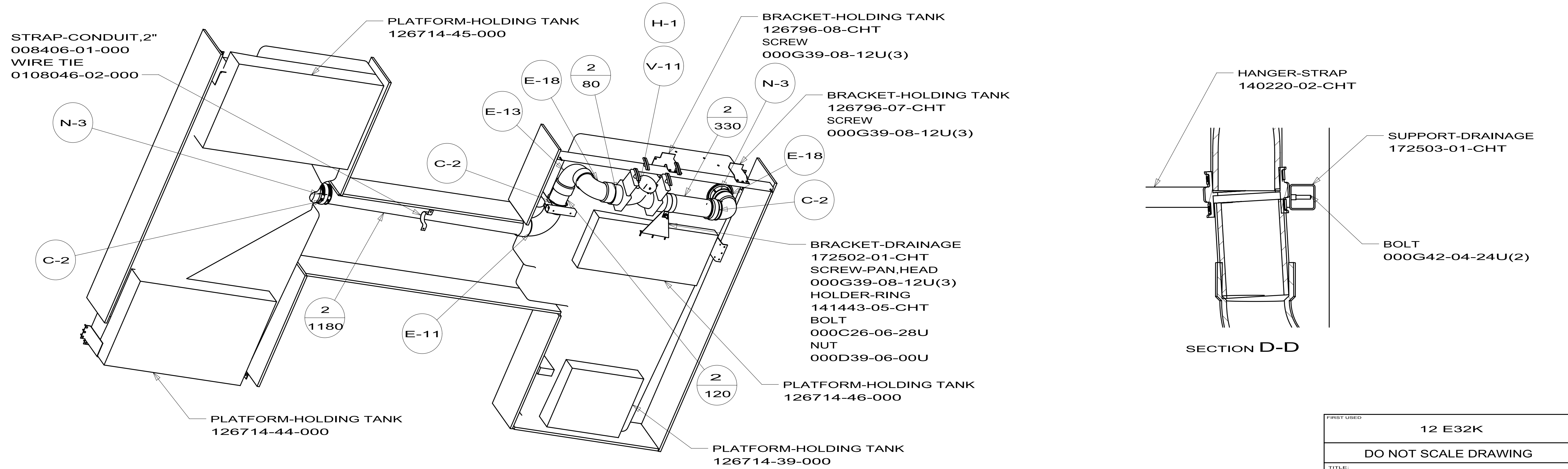
STRAP-CONDUIT,2"  
008406-01-000(2)

SHOWER INSTL  
164684-03-000  
STRAINER  
066440-01-000  
SEALANT  
084456-01-000  
SCREW  
000G11-08-12U (9)  
SCREW  
000G39-08-12U (4)  
WASHER-RUBBER  
127440-02-CHT  
TAILPIECE  
011069-02-000  
NUT  
130403-01-000

FIRST USED		12 E32K	
DO NOT SCALE DRAWING			
TITLE: DRAINAGE SYSTEM INSTL			
SHEET 2	PART NO	178807	REV

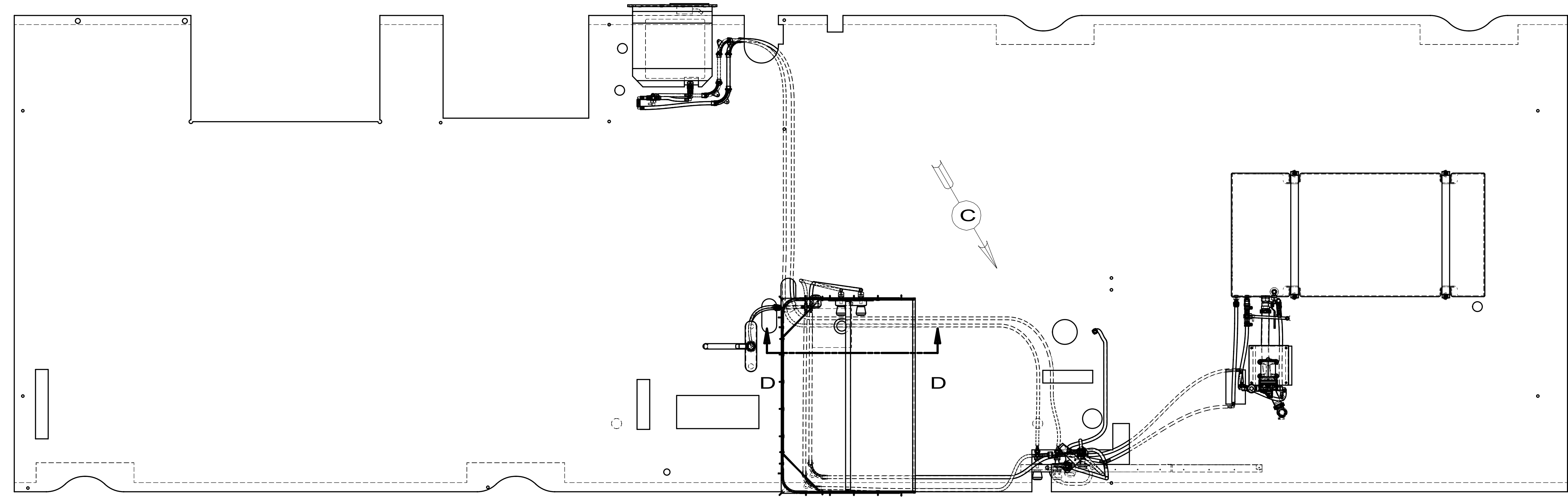


TOP VIEW SHOWING TANKS AND DRAINS



SECTION D-D

FIRST USED	12 E32K	
TITLE:	DO NOT SCALE DRAWING	
	DRAINAGE SYSTEM INSTL	
SHEET 3	PART NO 178807	REV



FRONT  
OF  
COACH

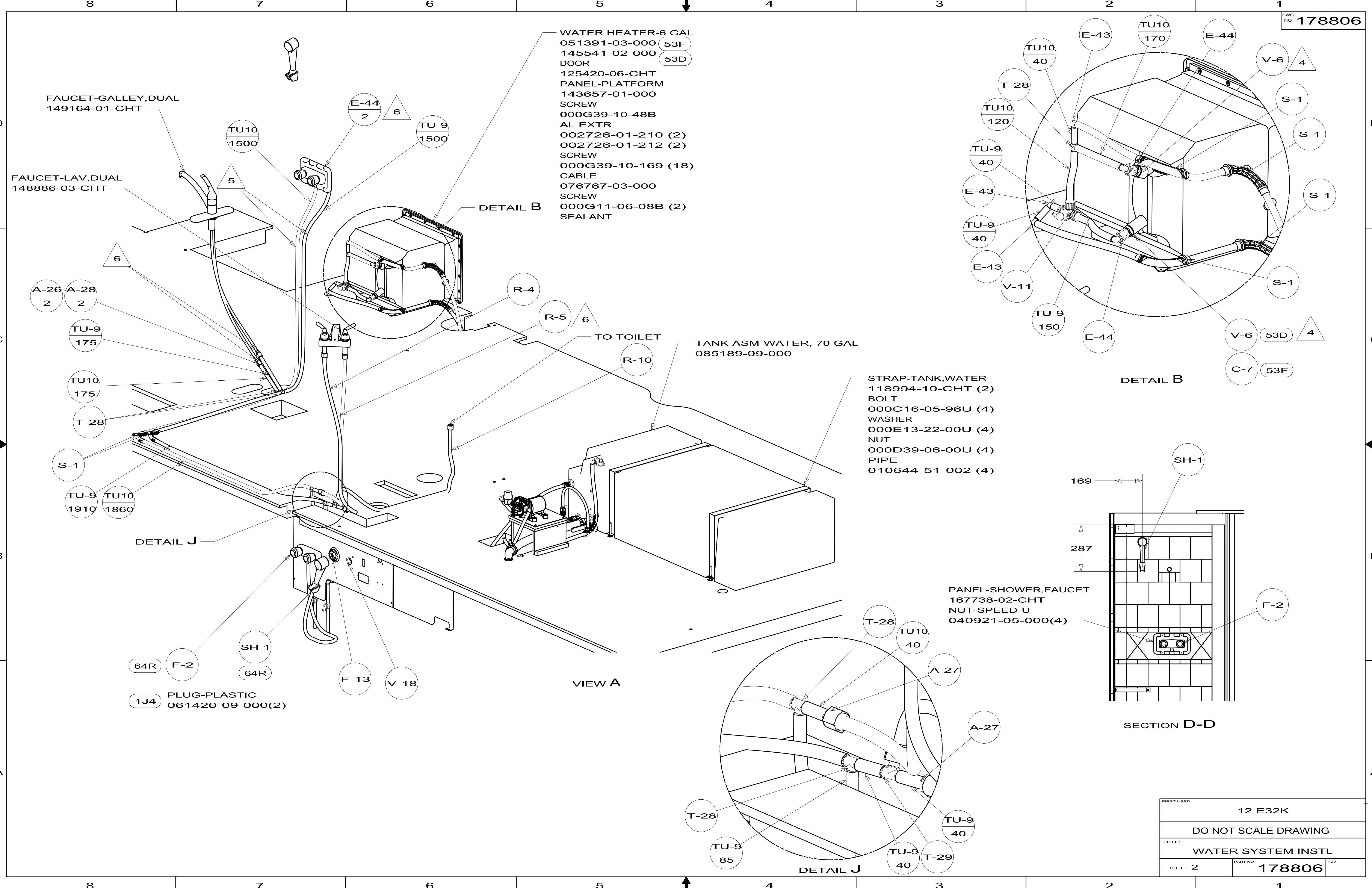
- 53F WATER HEATER-ELEC.IGNITION
- 53D WTR HTR-6GAL/ELEC/LP/MOTOR AID
- 64R EXTERIOR WASH STATION
- 1J4 EXT WASH STATION - WITHOUT

9. FLUSHING SYSTEM REQUIRES 125697-06-000 INSTRUCTION SHEET.
8. ALL CRIMP FITTINGS TO PEX TUBING REQUIRE 1/2" CLAMP 140171-03-000.
7. ALL CRIMP FITTINGS TO PEX TUBING REQUIRE 5/8" CLAMP 140171-04-000.
- 6 LABEL HOT AND COLD SUPPLY TUBES AND TAPE FITTING TO TUBE BEFORE CABINET SET TO PREVENT MOVEMENT.
- 5 ADD PIPE WRAP (LADDER SCRAP 110157-02-000) INSULATION.
- 4 ADD TEFLON TAPE 010405-02-000.
3. ALL TUBING TO BE SECURED AT 1200 INTERVALS MAXIMUM WITH CLAMP 010495-01-000 AND SCREW 000G67-10-12B OR EQUIVALENT.
2. TUBING TO BE INSTALLED WITH SUFFICIENT SLOPE TO PROVIDE DRAINAGE TO NEAREST VALVE.
1. PLASTIC FITTINGS TO BE SEALED WITH SEALANT 084456-01-000.

NOTES:

		COPYRIGHT 2011 WINNEBAGO INDUSTRIES, INC.
DTR	ORIG. DATE	
CHKR	ALL DIMENSIONS ARE IN MILLIMETERS	
P.E.		
M.E.	FIRST USED	
DSNR	12 E32K	
UNSPECIFIED TOLERANCES ARE:		MATERIAL:
WHOLE DIM (X)	: 3	
ONE-PLACE (X.X)	:	
TWO-PLACE (X.XX)	:	
ANGLE	:	
THIRD ANGLE PROJECTION		
DO NOT SCALE DRAWING		REFER TO ES0018 FOR FASTENER TIGHTENING GUIDELINES
TITLE: WATER SYSTEM INSTL		
SHEET 1 OF 3	PART NO 178806	REV
REF:	1	

FOR  
WATER  
CALLOUTS  
SEE DWG NO  
116230-01-000



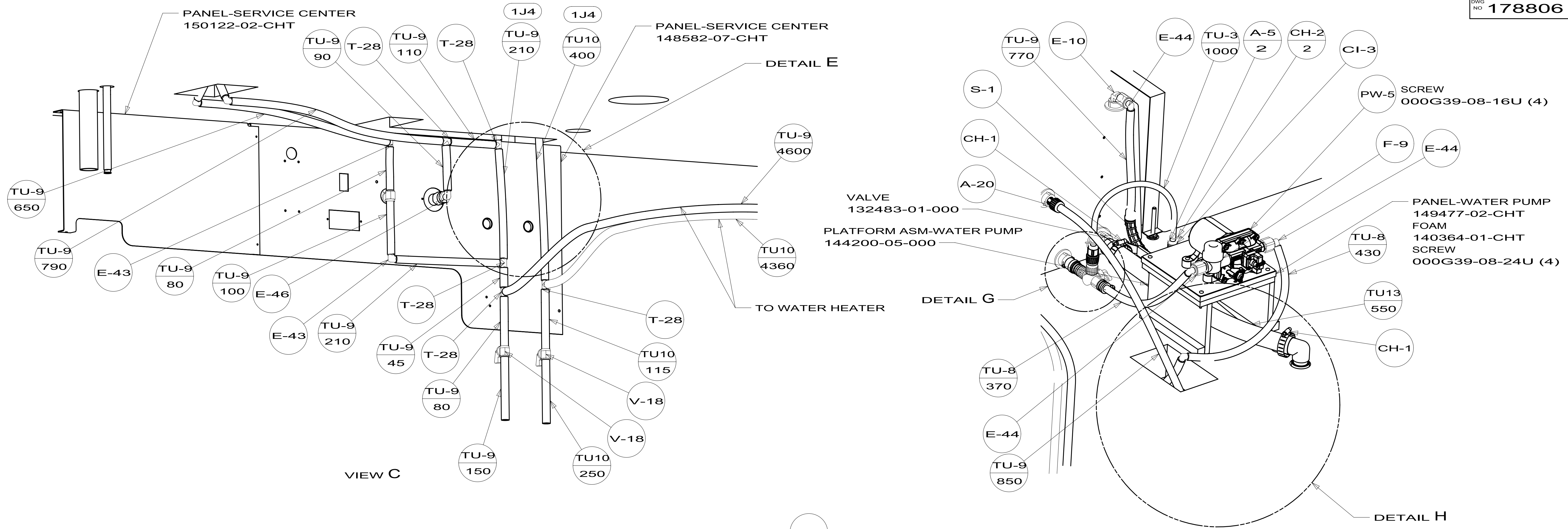
FIRST USED	12 E32K	
TITLE:	DO NOT SCALE DRAWING	
	WATER SYSTEM INSTL	
SHEET 2	PART NO	178806
	REV	

PANEL-SERVICE CENTER  
150122-02-CHT

PANEL-SERVICE CENTER  
148582-07-CHT

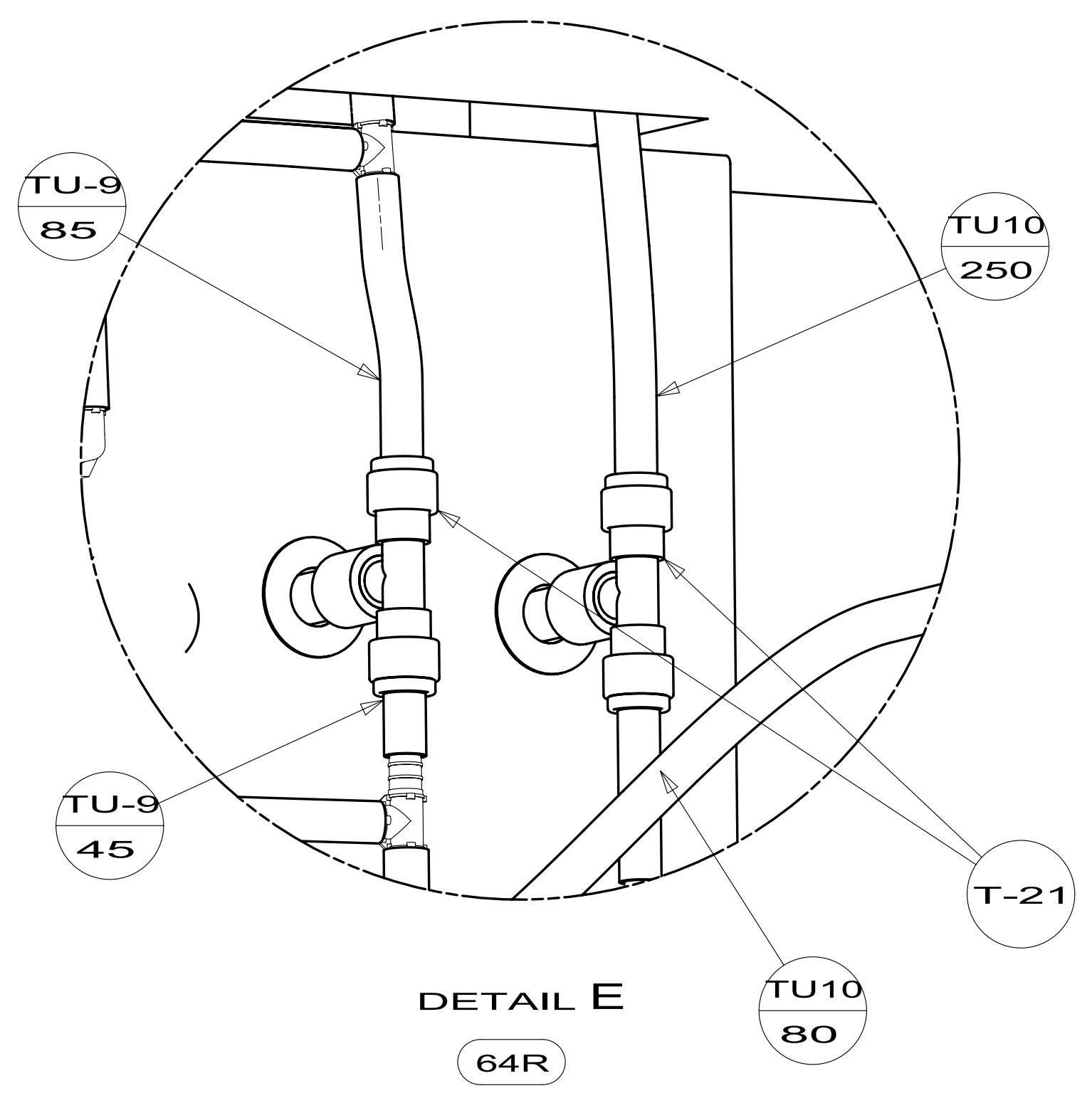
VALVE  
132483-01-000  
PLATFORM ASM-WATER PUMP  
144200-05-000

PANEL-WATER PUMP  
149477-02-CHT  
FOAM  
140364-01-CHT  
SCREW  
000G39-08-24U (4)

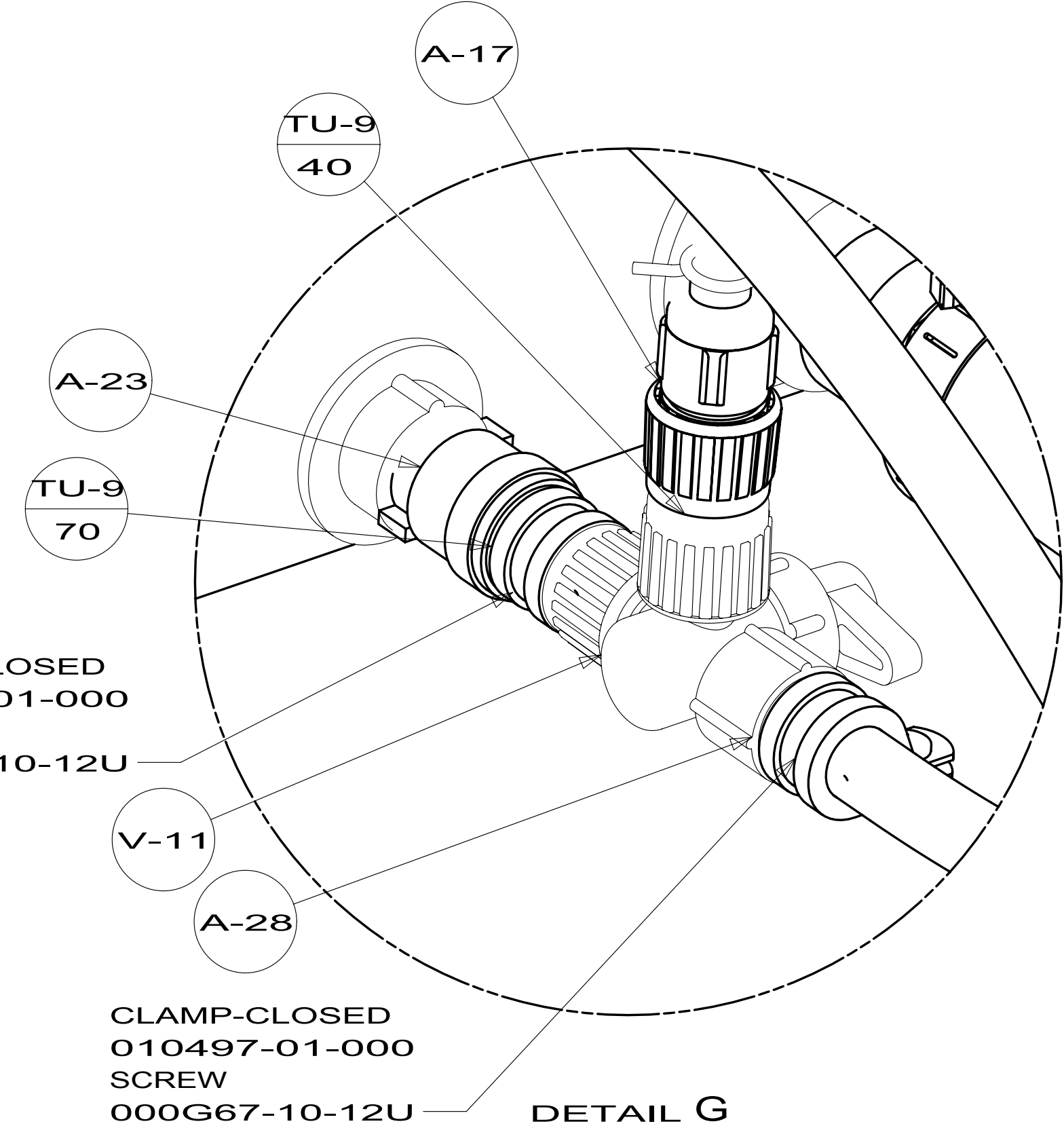


VIEW C

VIEW F



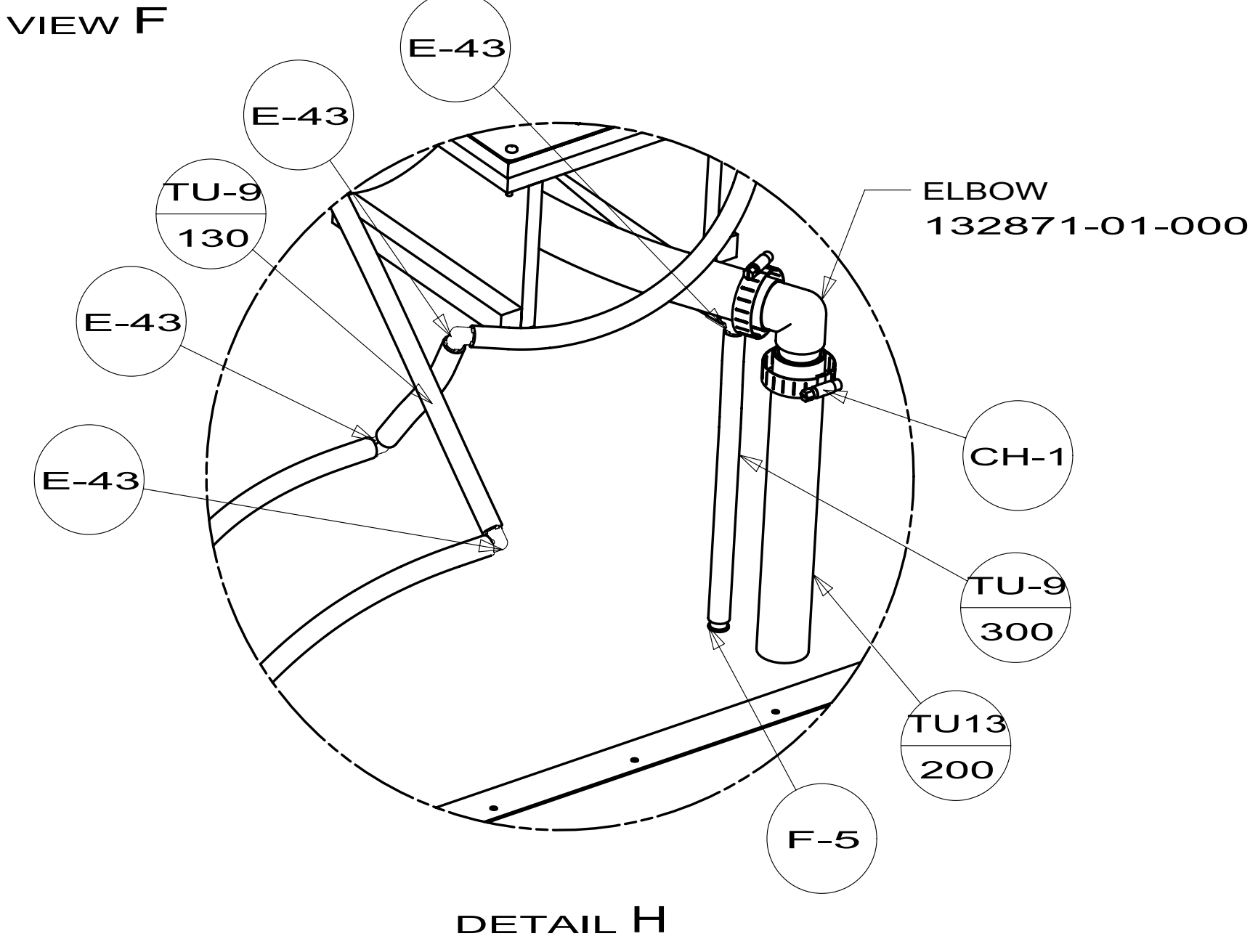
DETAIL E  
64R



CLAMP-CLOSED  
010497-01-000  
SCREW  
000G67-10-12U

CLAMP-CLOSED  
010497-01-000  
SCREW  
000G67-10-12U

DETAIL G



DETAIL H

ELBOW  
132871-01-000

FIRST USED	12 E32K	
TITLE:	DO NOT SCALE DRAWING	
	WATER SYSTEM INSTL	
SHEET 3	PART NO	178806
	REV	