

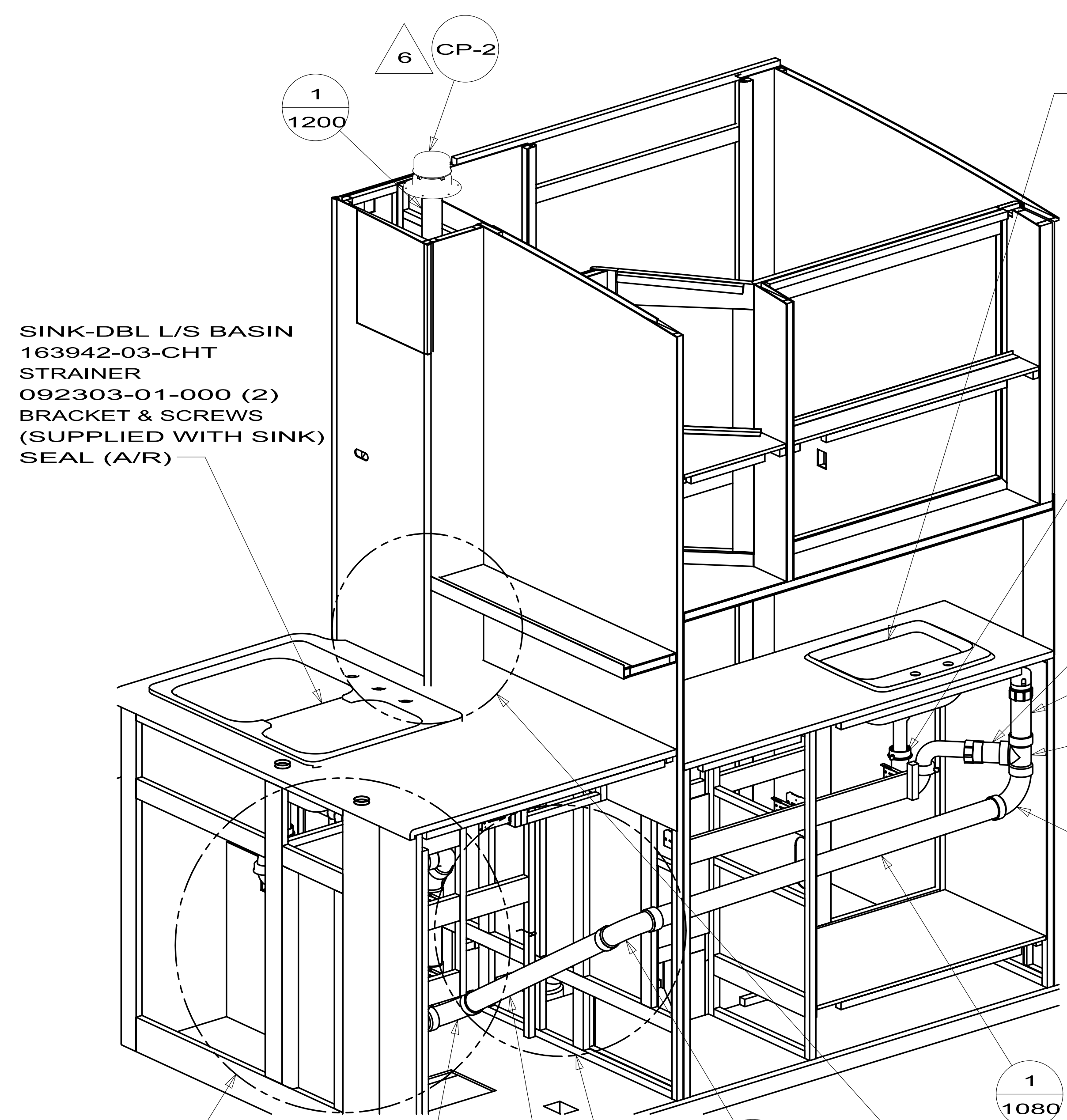
FRONT
OF
COACH

265 CODES/STDS-CSA/CMVSS
1B1 CODES/STANDARDS-USA

WINNEBAGO INDUSTRIES		COPYRIGHT 2011 WINNEBAGO INDUSTRIES, INC.	
DTR	ORIG. DATE	ALL DIMENSIONS ARE IN MILLIMETERS	
CHKR			
P.E.			
M.E.	FIRST USED		
DSNR		12 E30T	
UNSPECIFIED TOLERANCES ARE:		MATERIAL:	
WHOLE DIM (X)	: 3		
ONE-PLACE (X.X)	:		
TWO-PLACE (X.XX)	:		
ANGLE	:		
THIRD ANGLE PROJECTION			
DO NOT SCALE DRAWING		REFER TO ES0018 FOR FASTENER TIGHTENING GUIDELINES	
TITLE: DRAINAGE SYSTEM INSTL			
SHEET 1 OF 4	PART NO	177350	REV
REF:	1	6/10/2011	

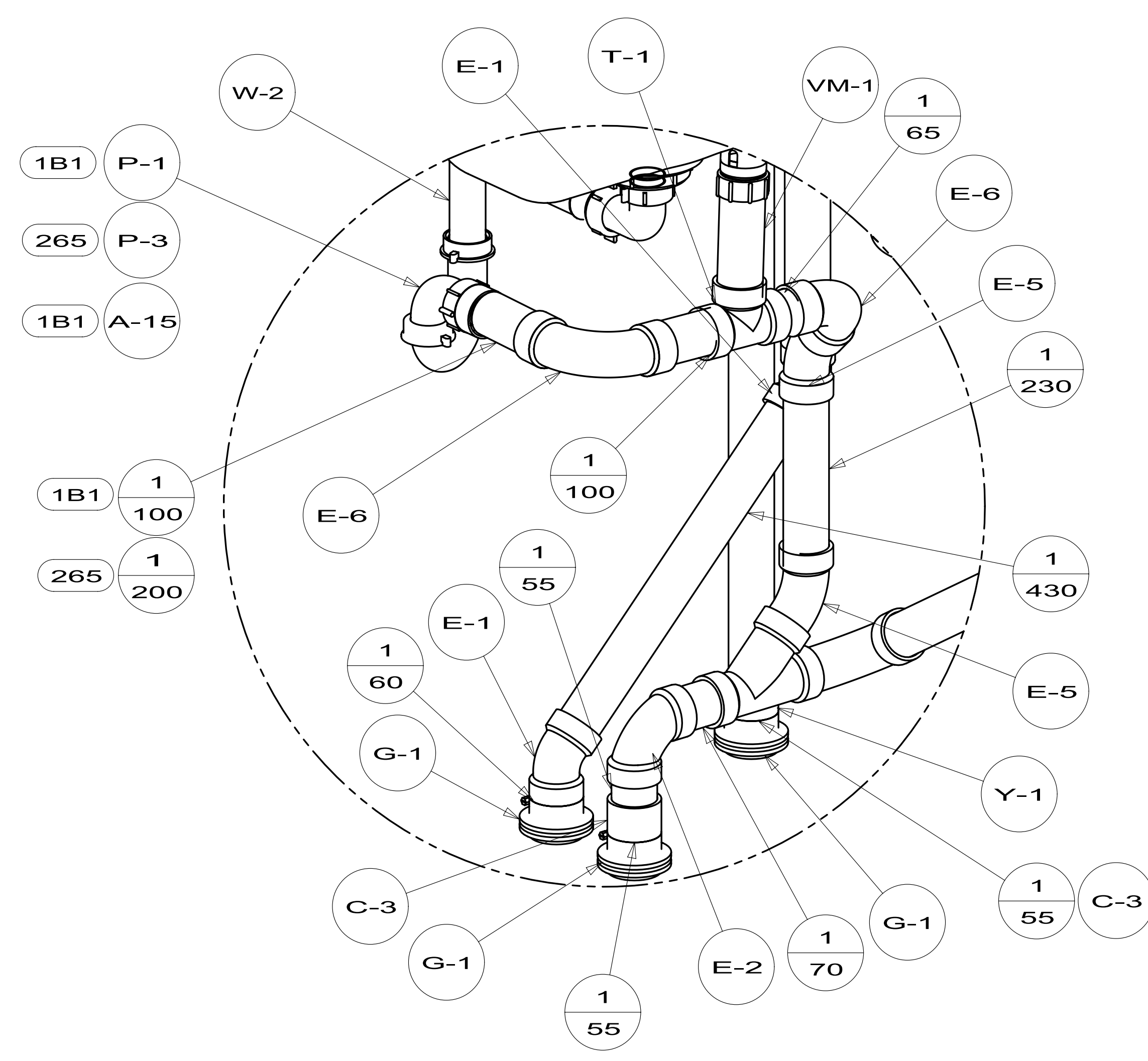
- NOTES:
1. SLOPE OF HORIZONTAL PIPING TO BE MIN 3 PER 305 mm.
 2. SLOPE OF TRAP ARM MUST BE 6 PER 305 mm.
 3. ALL PIPE AND FITTINGS TO BE ASSEMBLED WITH SOLVENT 004020-01-000 (US), 004020-02-000 (CAN).
 4. SECURE VENT TUBES TO FLOOR WITH BRACKET 136878-01-CHT. CLAMP 062401-02-000 AND SCREW 000G67-10-12B.
 5. SEAL AROUND SHOWER WITH SILICONE.
 - 6 VENT PIPE MUST PROJECT 51 MIN AND 64 MAX ABOVE ROOF FOR PROPER FIT AND FUNCTION.

FOR
DRAINAGE
CALLOUTS
SEE DWG NO
116229-01-000

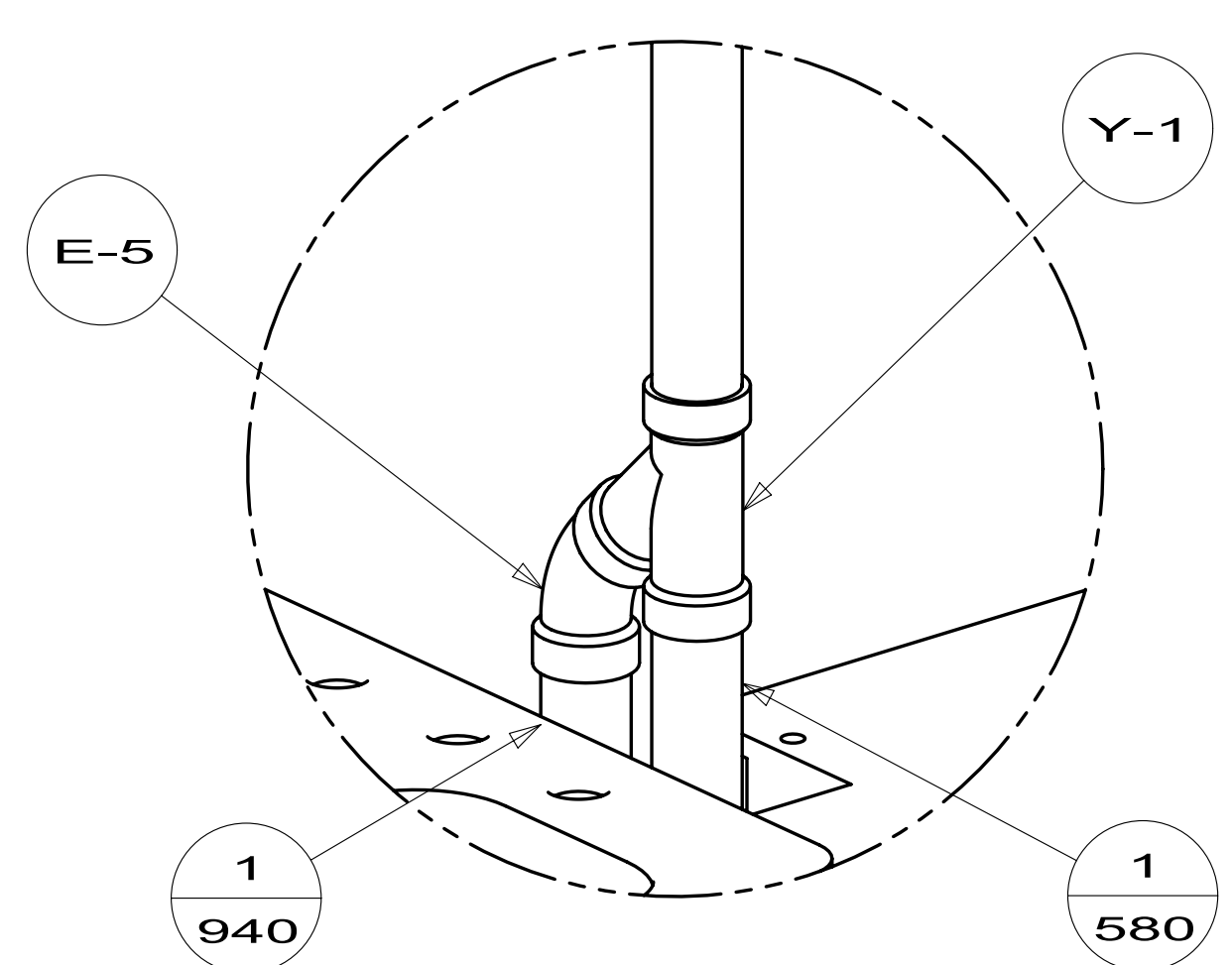


- P-1 1B1
- P-3 265
- A-15 1B1

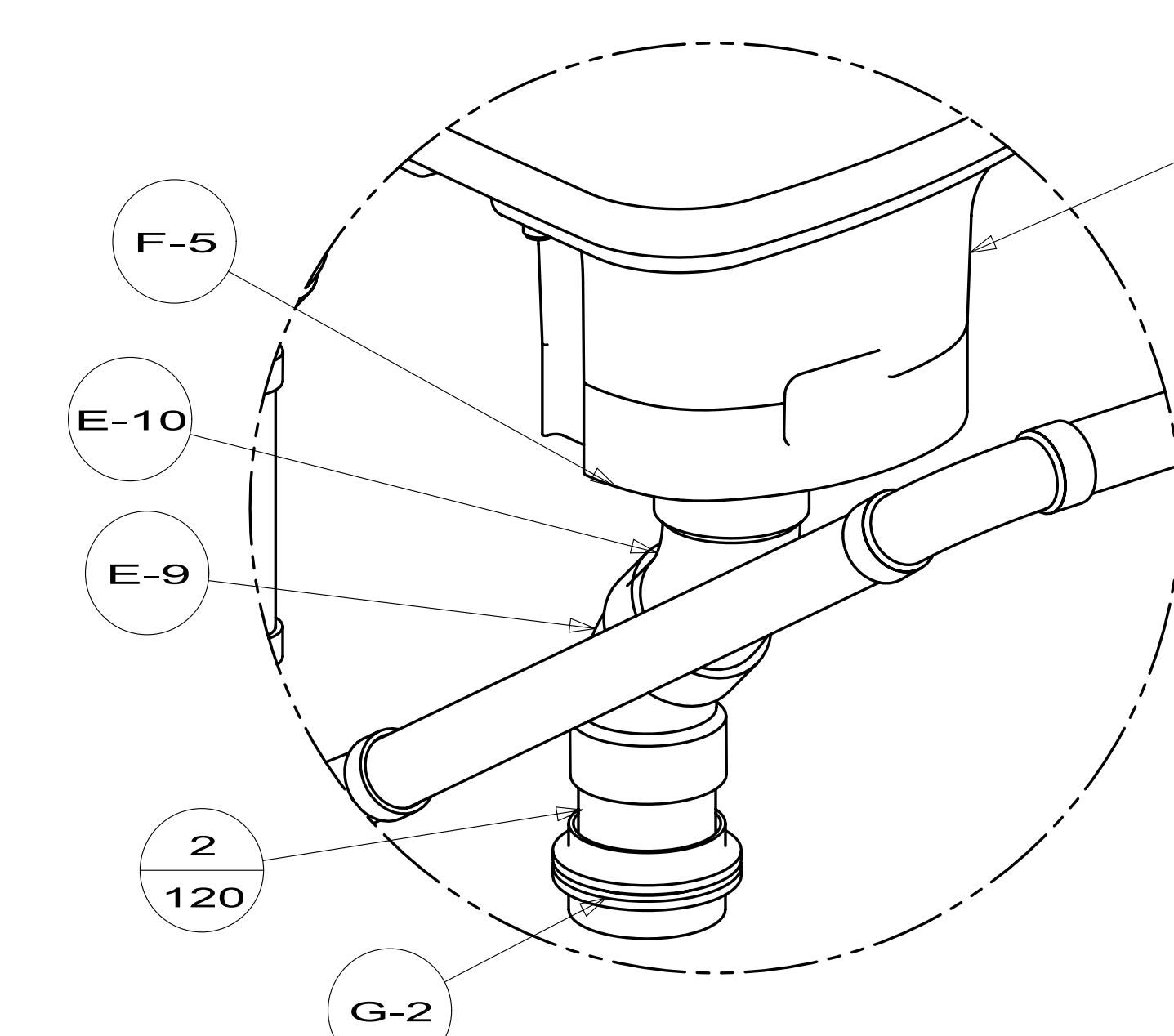
- 1
80
- VM-1
- T-1
- E-3



DETAIL B
(SHOWN W/OUT CABINETS AND FLOOR)



DETAIL D
(SHOWN W/OUT CABINETS)

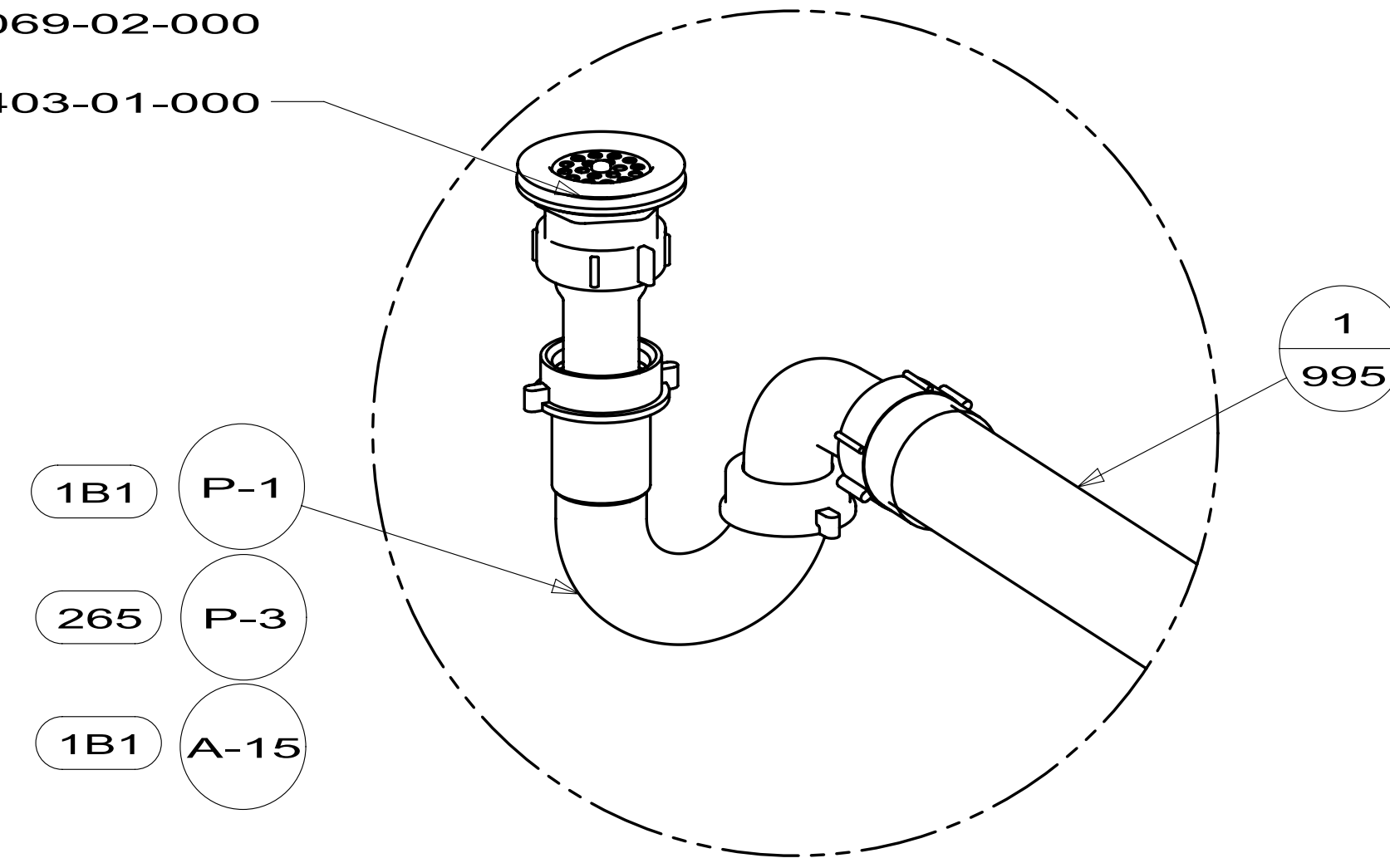
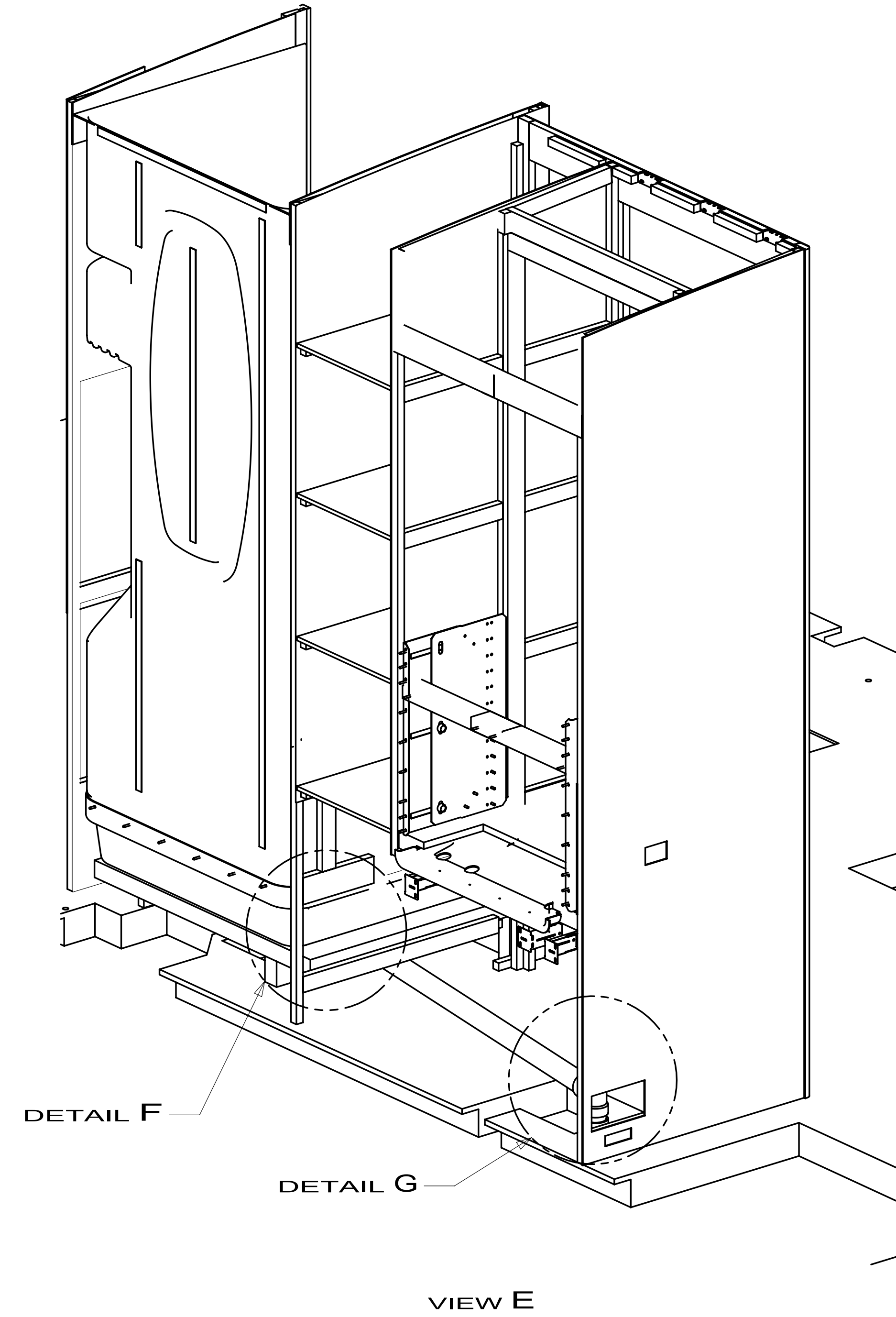


DETAIL C
(SHOWN W/OUT CABINETS AND FLOOR)

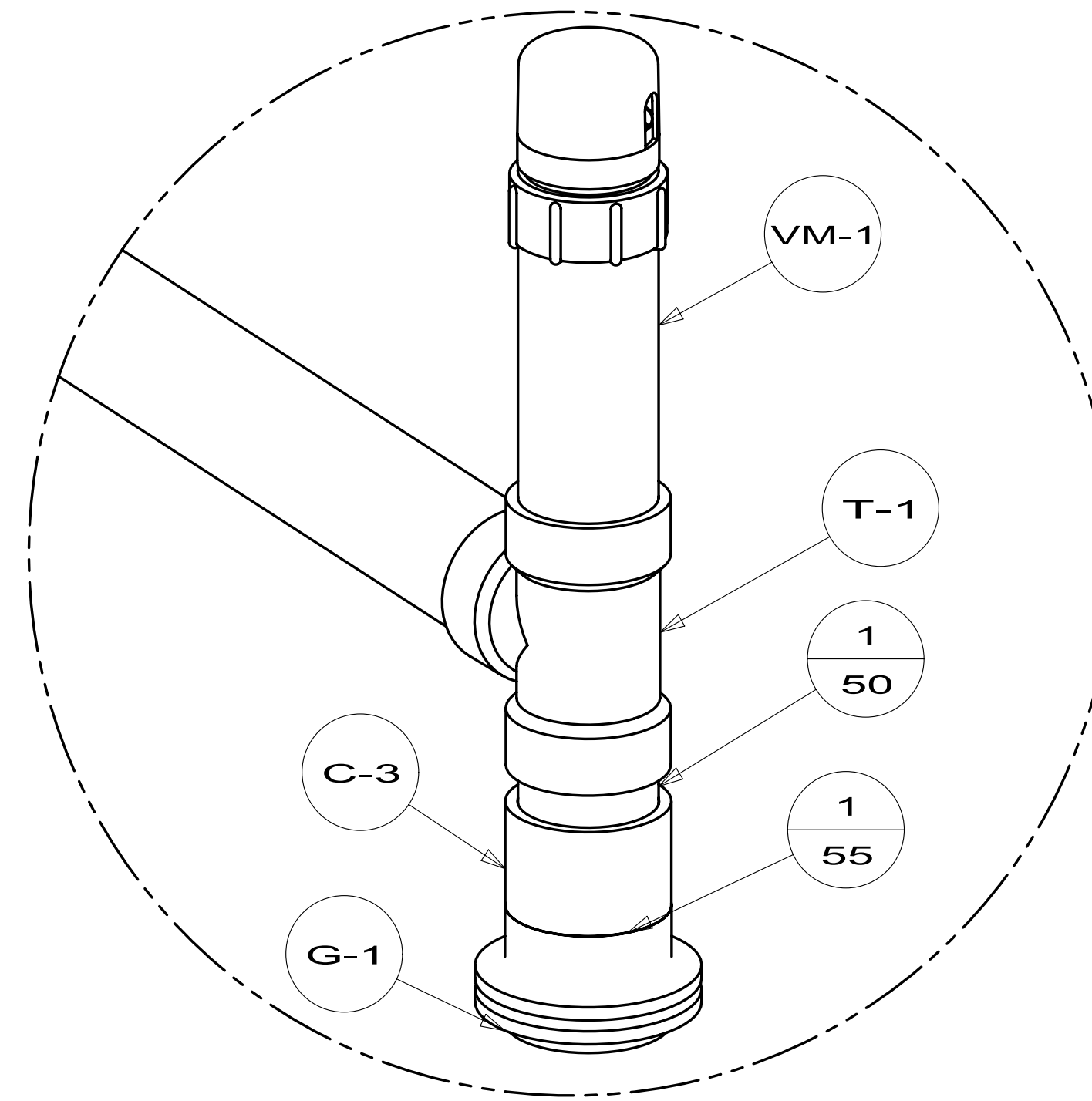
TOILET, LOW
147421-05-CHT
(FOOT FLUSH)
SCREW
087721-01-000 (6)

FIRST USED	12 E30T	
TITLE:	DO NOT SCALE DRAWING	
	DRAINAGE SYSTEM INSTL	
SHEET 2	PART NO	177350
	REV	

- SHOWER INSTL-ENCLOSURE
- 147936-04-000
- WASHER-RUBBER
- 127440-02-CHT
- SEALER
- 069640-01-000
- STRAINER
- 066440-01-000
- TAIL PIECE
- 011069-02-000
- NUT
- 130403-01-000

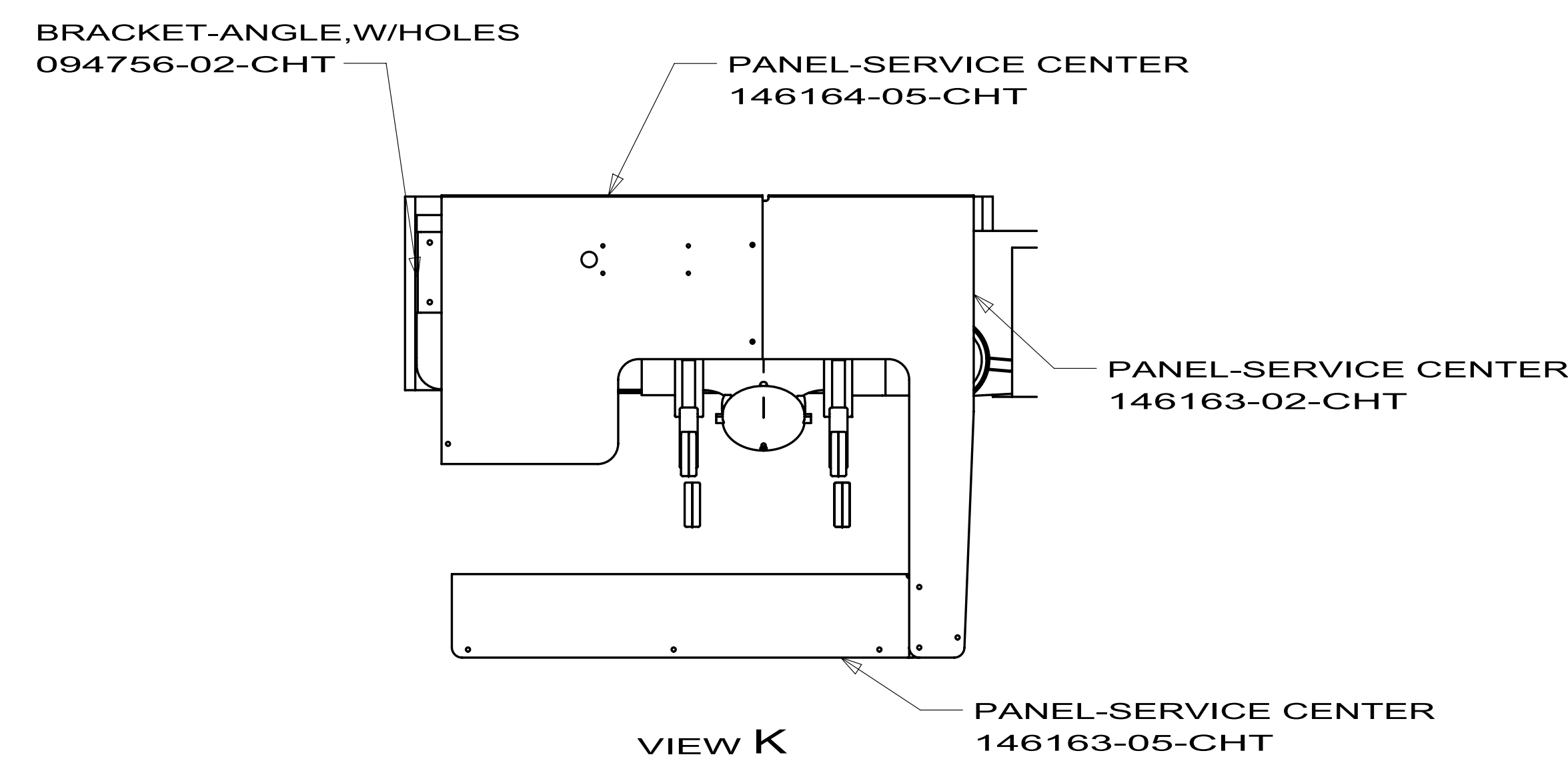
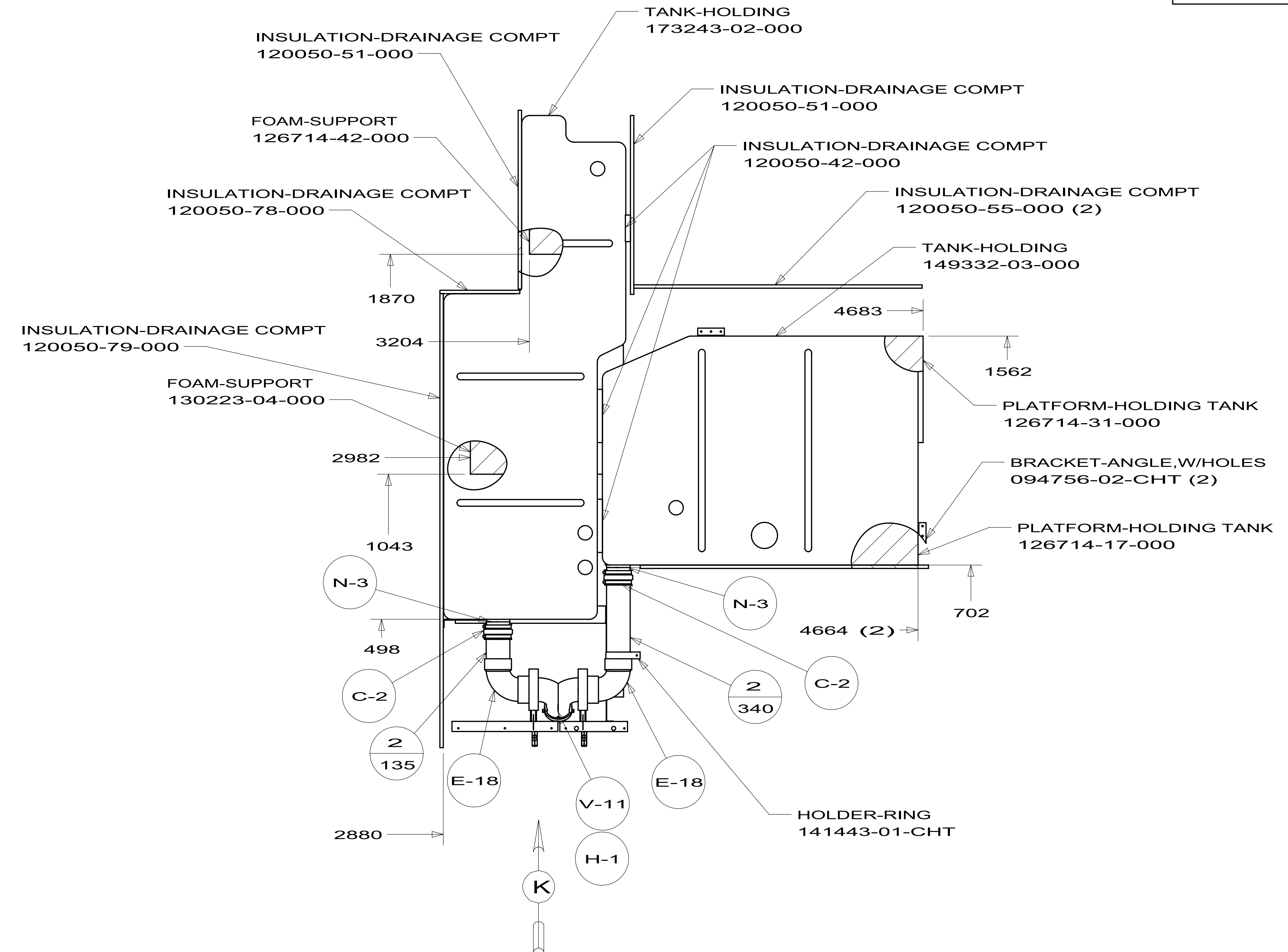
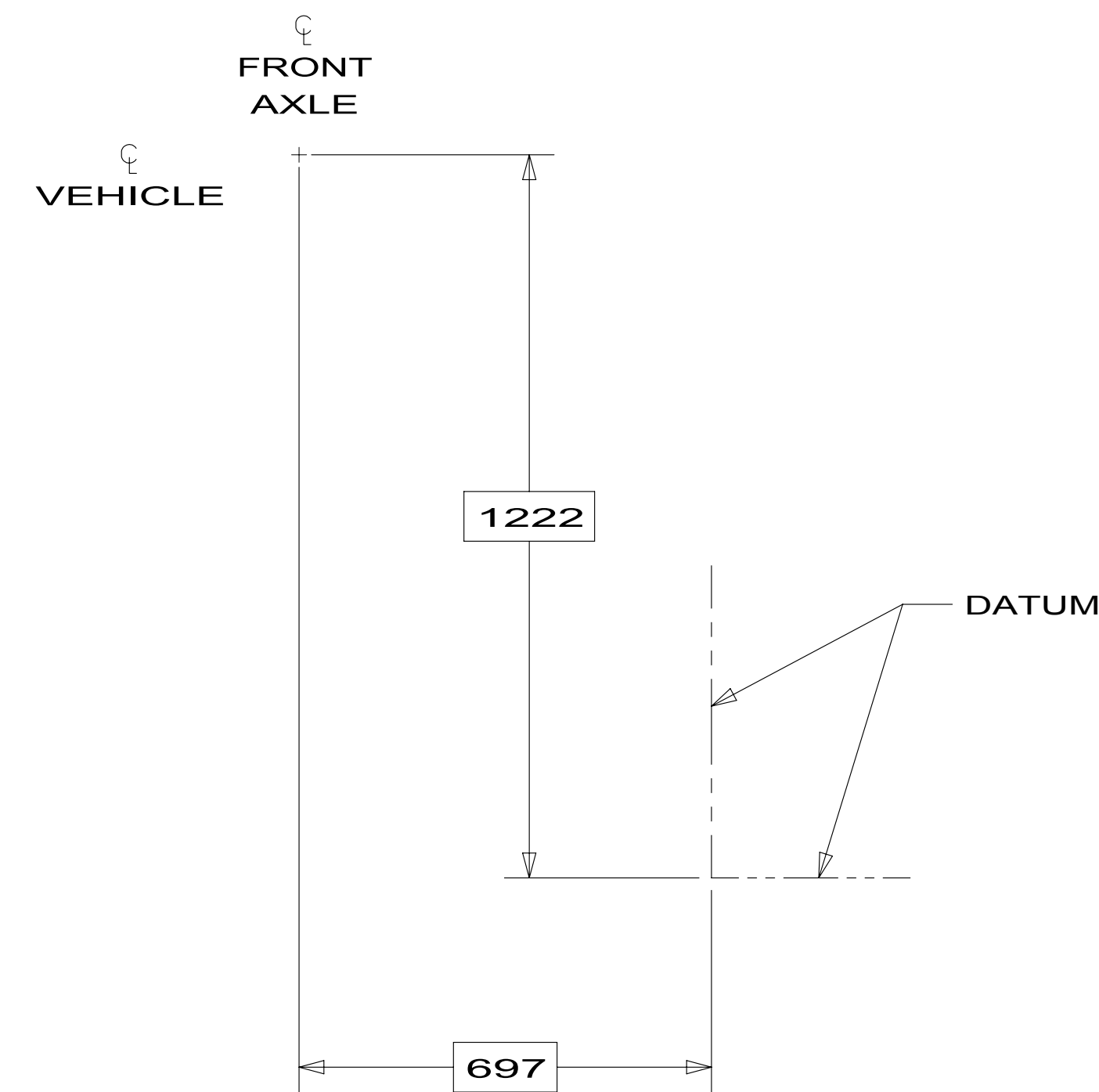


DETAIL F
(SHOWN W/OUT SHOWER PAN AND FLOOR)

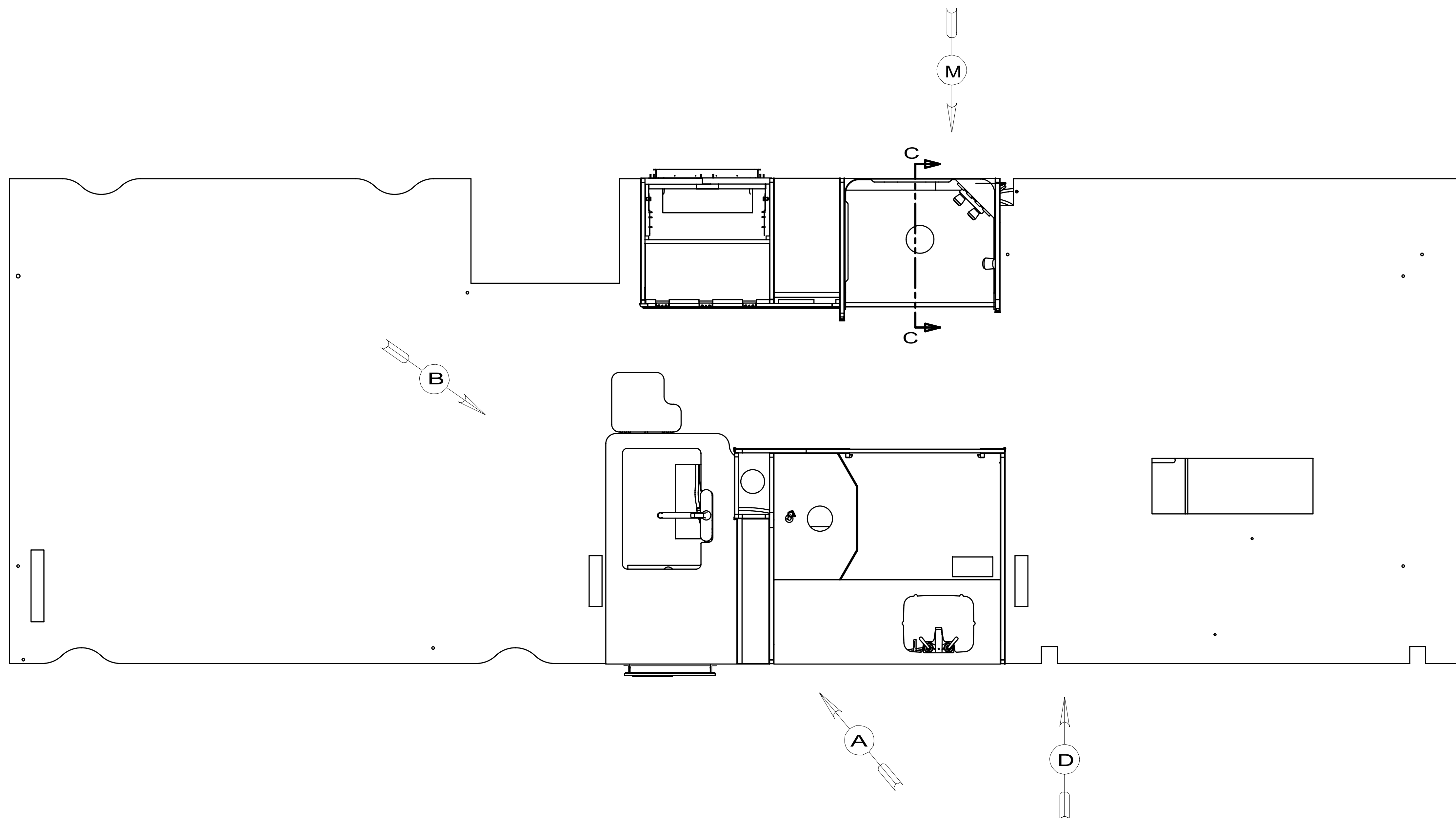


DETAIL G
(SHOWN W/OUT CABINETS AND FLOOR)

FIRST USED	12 E30T	
TITLE:	DO NOT SCALE DRAWING	
	DRAINAGE SYSTEM INSTL	
SHEET 3	PART NO 177350	REV



FIRST USED	12 E30T	
TITLE:	DO NOT SCALE DRAWING	
TITLE:	DRAINAGE SYSTEM INSTL	
SHEET 4	PART NO 177350	REV

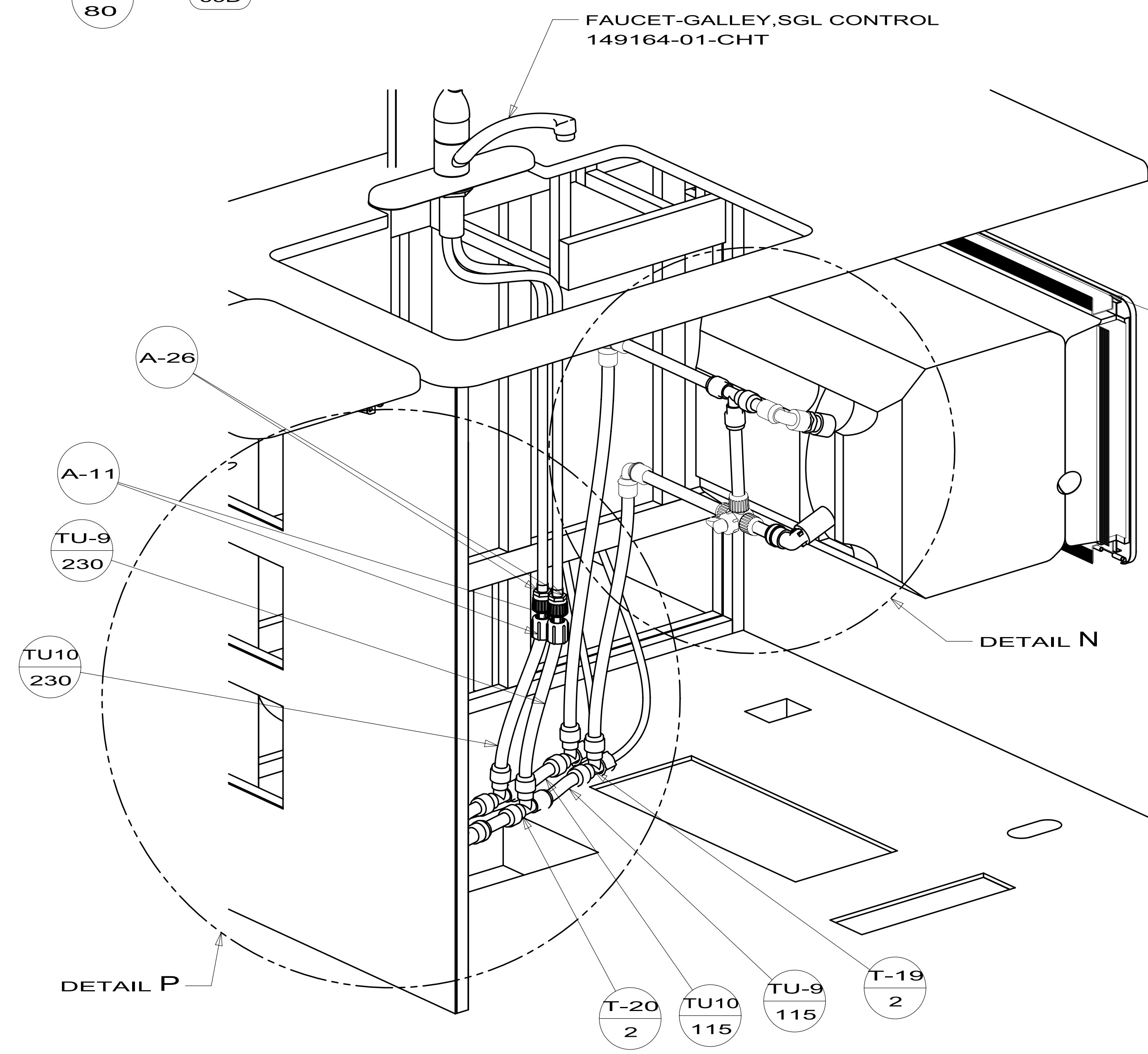
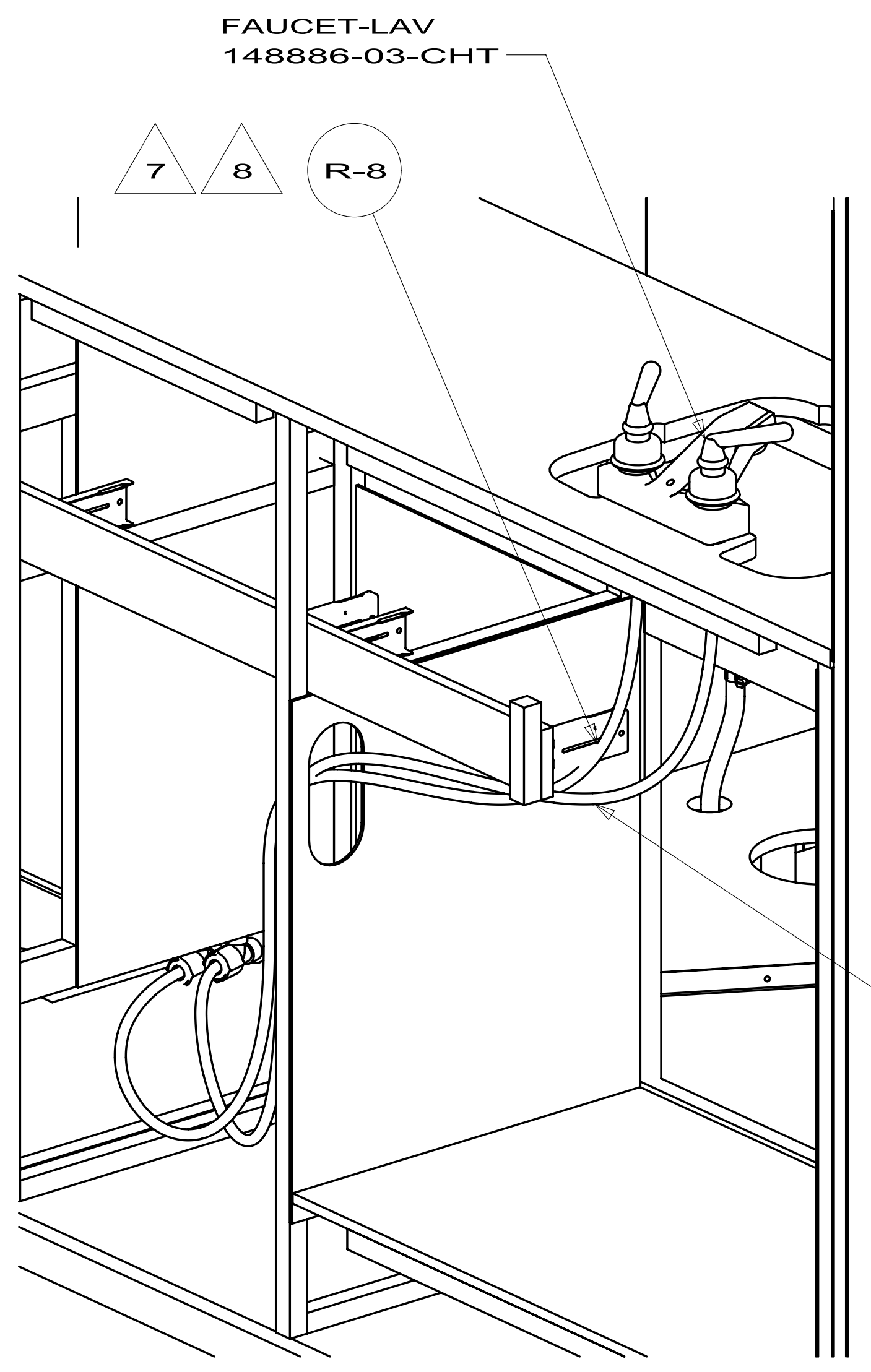
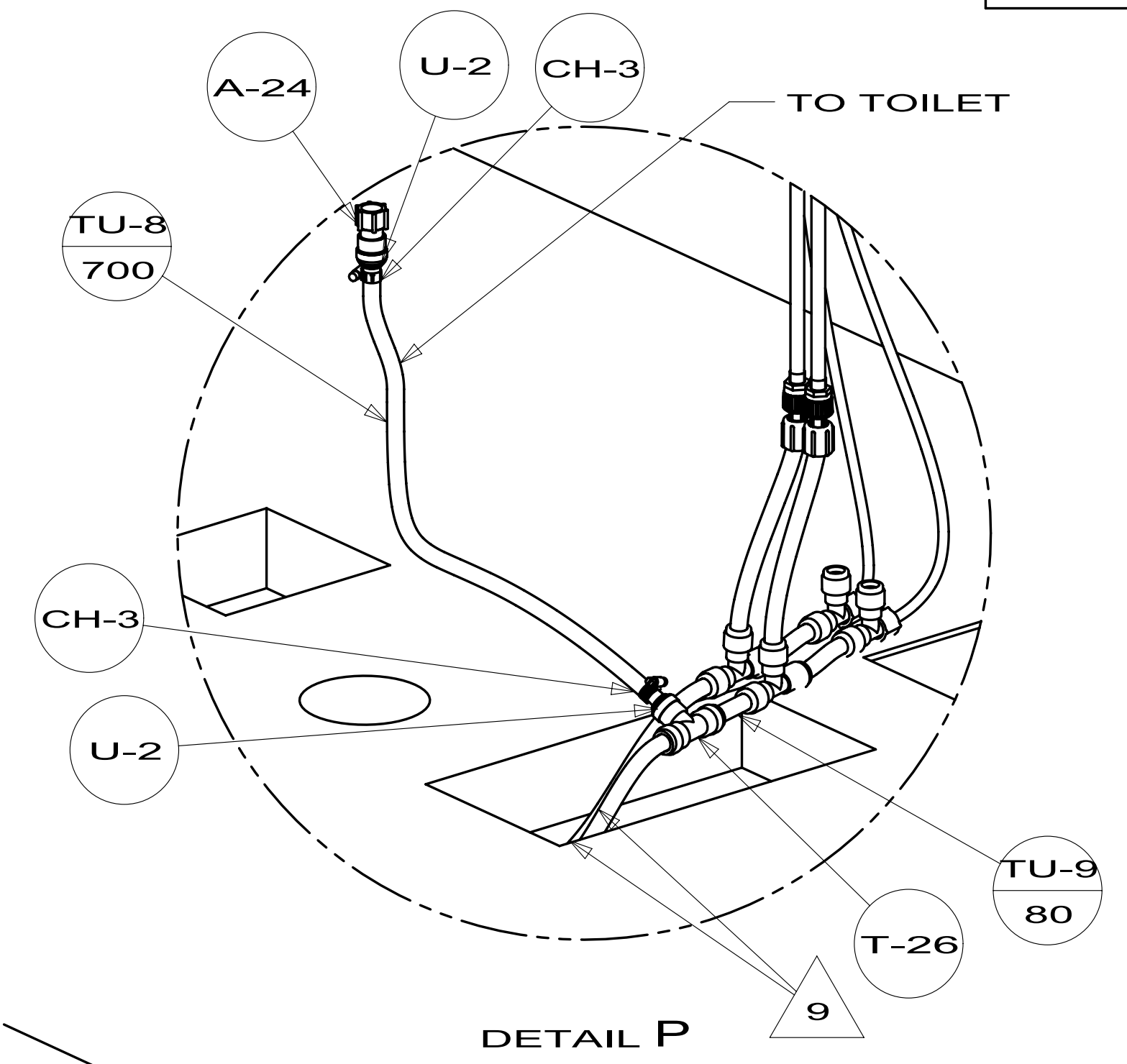
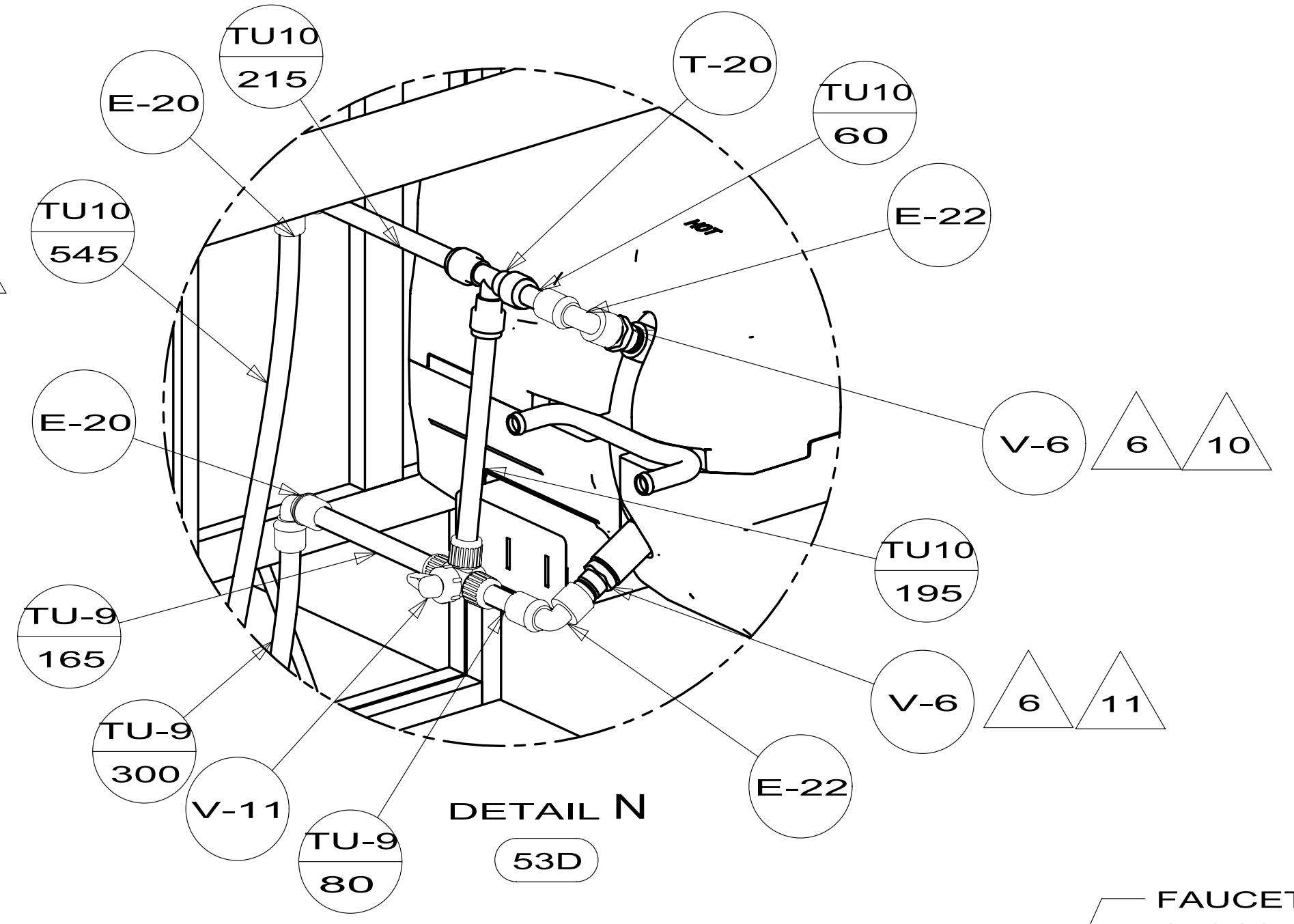
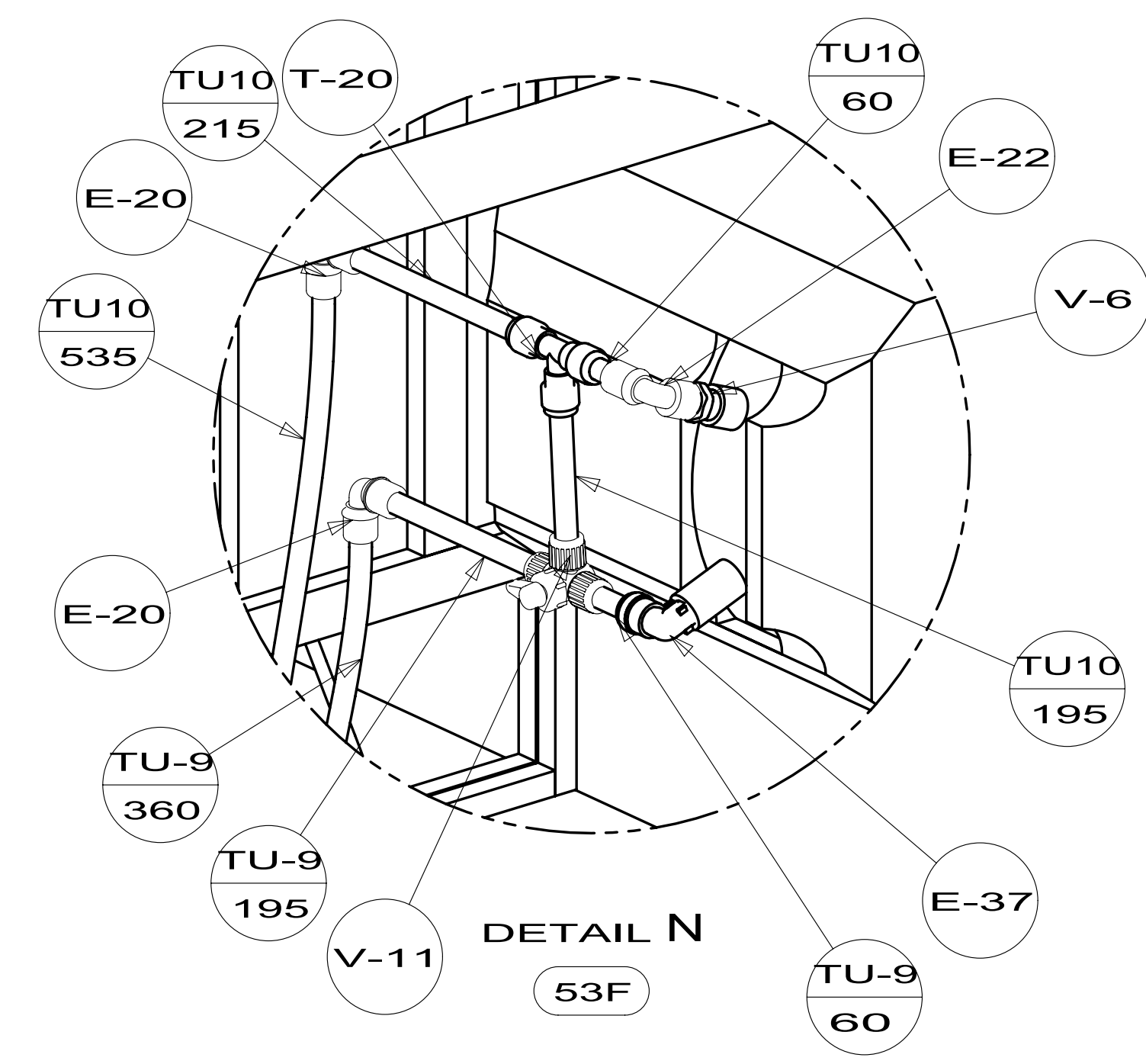


- 11 CHECK VALVE IS INSTALLED TO PREVENT WATER FROM LEAVING WATER HEATER.
 - 10 CHECK VALVE IS INSTALLED TO PREVENT WATER FROM ENTERING WATER HEATER.
 - 9 ADD PIPE WRAP (LADDER SCRAP) INSULATION HERE.
 - 8 LABEL HOT AND COLD SUPPLY TUBES.
 - 7 TAPE FITTING TO TUBE BEFORE CABINET SET TO PREVENT FITTING FROM MOVING.
 - 6 ADD TEFLON TAPE 10405-01-000.
 - 5 ADD TEFLON TAPE 10405-02-000.
 - 4 FLUSHING SYSTEM REQUIRES 125697-06-000 INSTRUCTION SHEET.
3. ALL TUBING TO BE SECURED AT 1200 INTERVALS MAXIMUM WITH CLAMP 10495-01-000 AND SCREW G67-10-12B OR EQUIVALENT.
2. TUBING TO BE INSTALLED WITH SUFFICIENT SLOPE TO PROVIDE DRAINAGE TO NEAREST VALVE.
1. PLASTIC FITTINGS TO BE SEALED WITH SEALANT 84456-01-000.

- 1J4 EXT WASH STATION - WITHOUT
- 64R EXTERIOR WASH STATION
- 53F WATER HEATER-ELEC. IGNITION
- 53D WTR HTR-6GAL/ELE/LP/MOTORAID

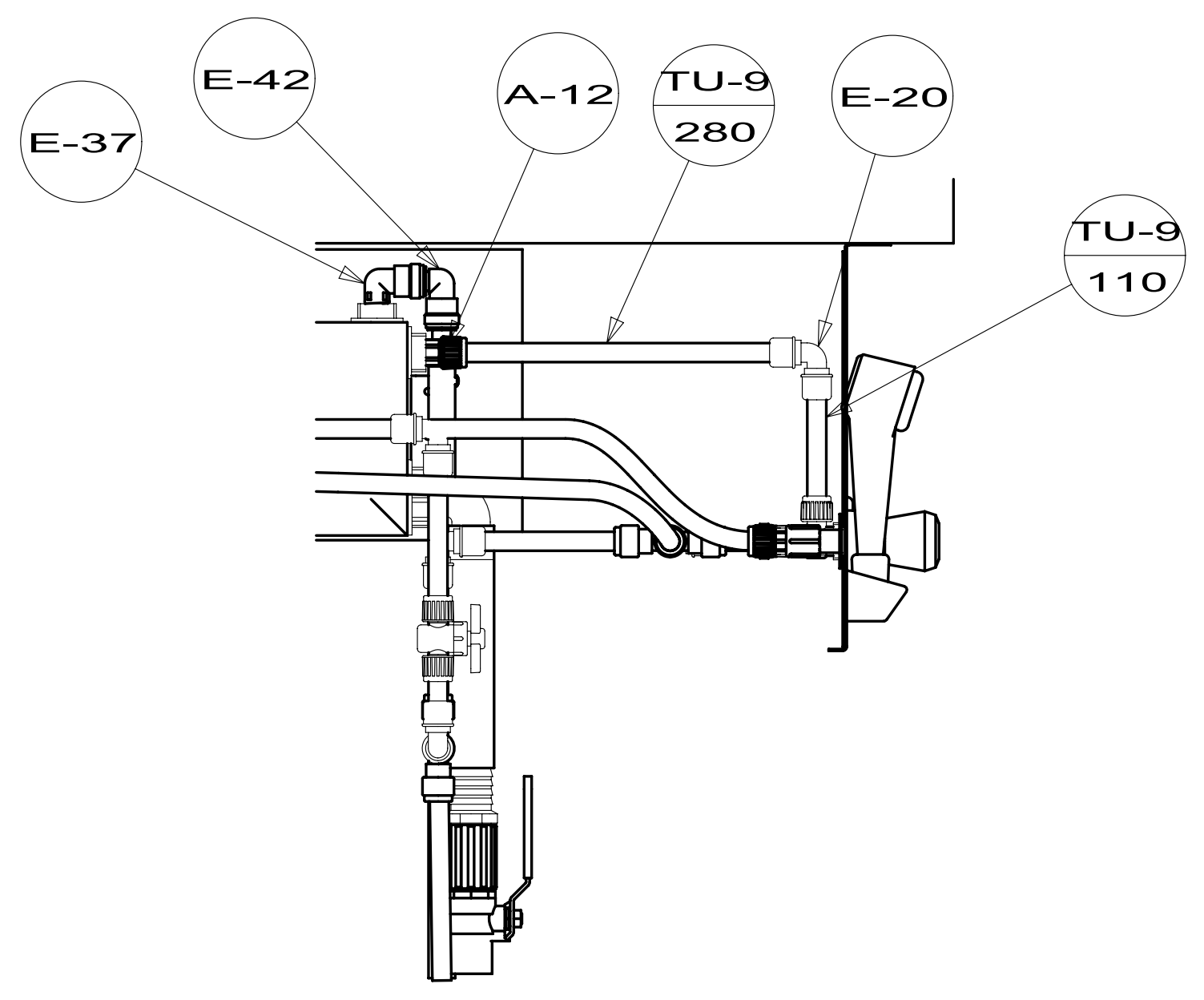
		COPYRIGHT 2011 WINNEBAGO INDUSTRIES, INC.
DTR	ORIG. DATE	
CHKR	ALL DIMENSIONS ARE IN MILLIMETERS	
P.E.		
M.E.	FIRST USED	
DSNR	12 E30T	
UNSPECIFIED TOLERANCES ARE:		MATERIAL:
WHOLE DIM (X)	: 3	
ONE-PLACE (X.X)	: 1.5	
TWO-PLACE (X.XX)	: 0.50	
ANGLE	: 1°	
THIRD ANGLE PROJECTION		
DO NOT SCALE DRAWING		REFER TO ES0018 FOR FASTENER TIGHTENING GUIDELINES
TITLE: WATER SYSTEM INSTL		
SHEET 1 OF 4	PART NO 177361	REV
REF:		1

FOR
WATER
CALLOUTS
SEE DWG NO
116230-01-000

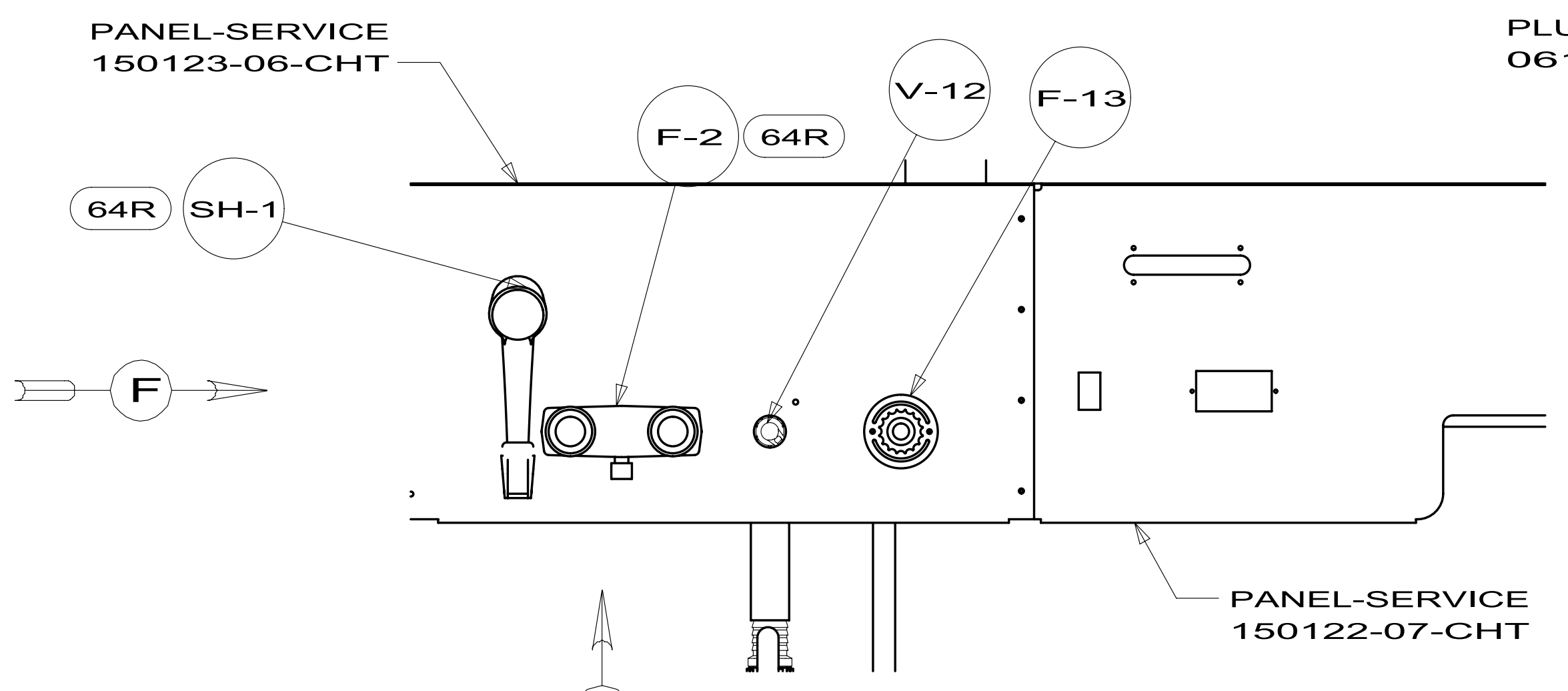


- WATER HEATER (53F)
- 051391-03-000
- 145541-02-000
- DOOR (53D)
- 125420-06-CHT
- CABLE
- 076767-03-000
- SCREW
- 000G11-06-08B (2)
- AL EXTR
- 002726-51-018 (2)
- 002726-51-017 (2)
- SCREW
- 000G39-10-169 (18)
- SEALANT

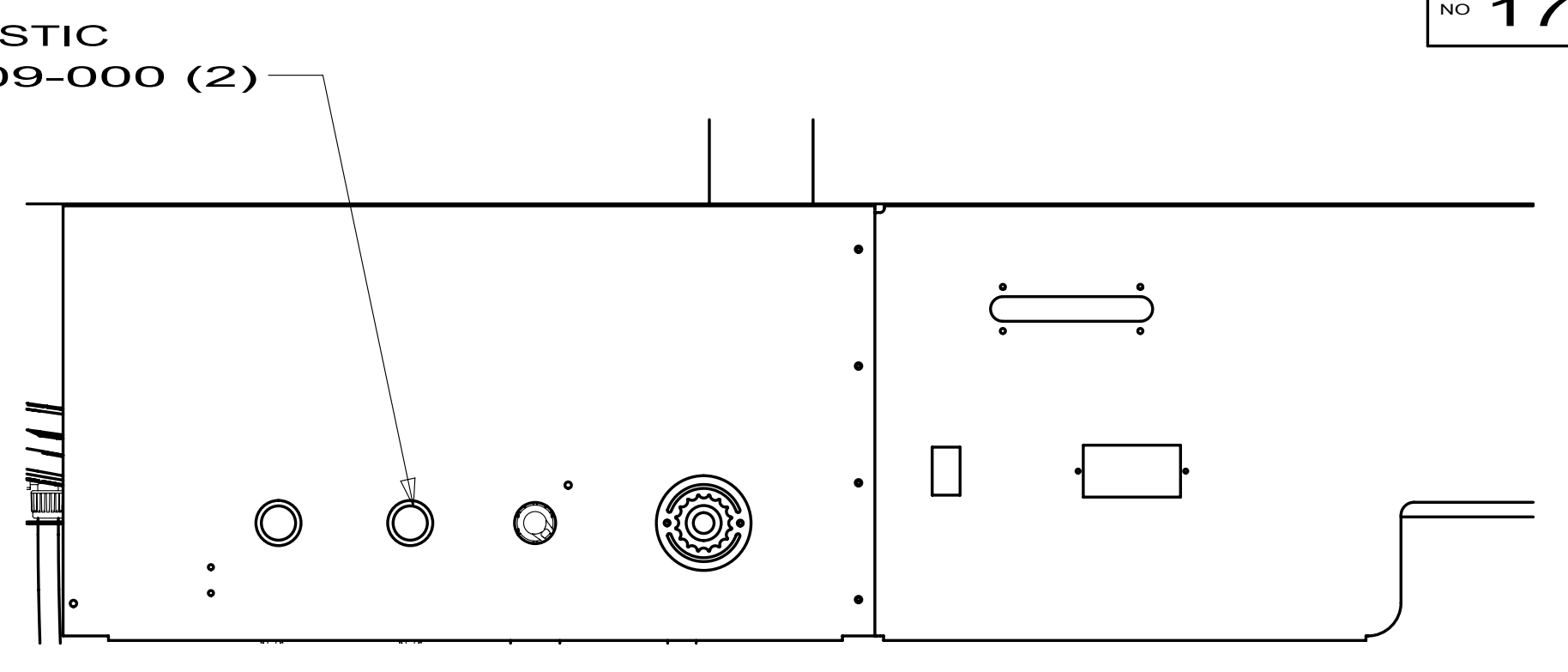
FIRST USED	12 E30T	
DO NOT SCALE DRAWING		
TITLE: WATER SYSTEM INSTL		
SHEET 2	PART NO. 177361	REV



VIEW F

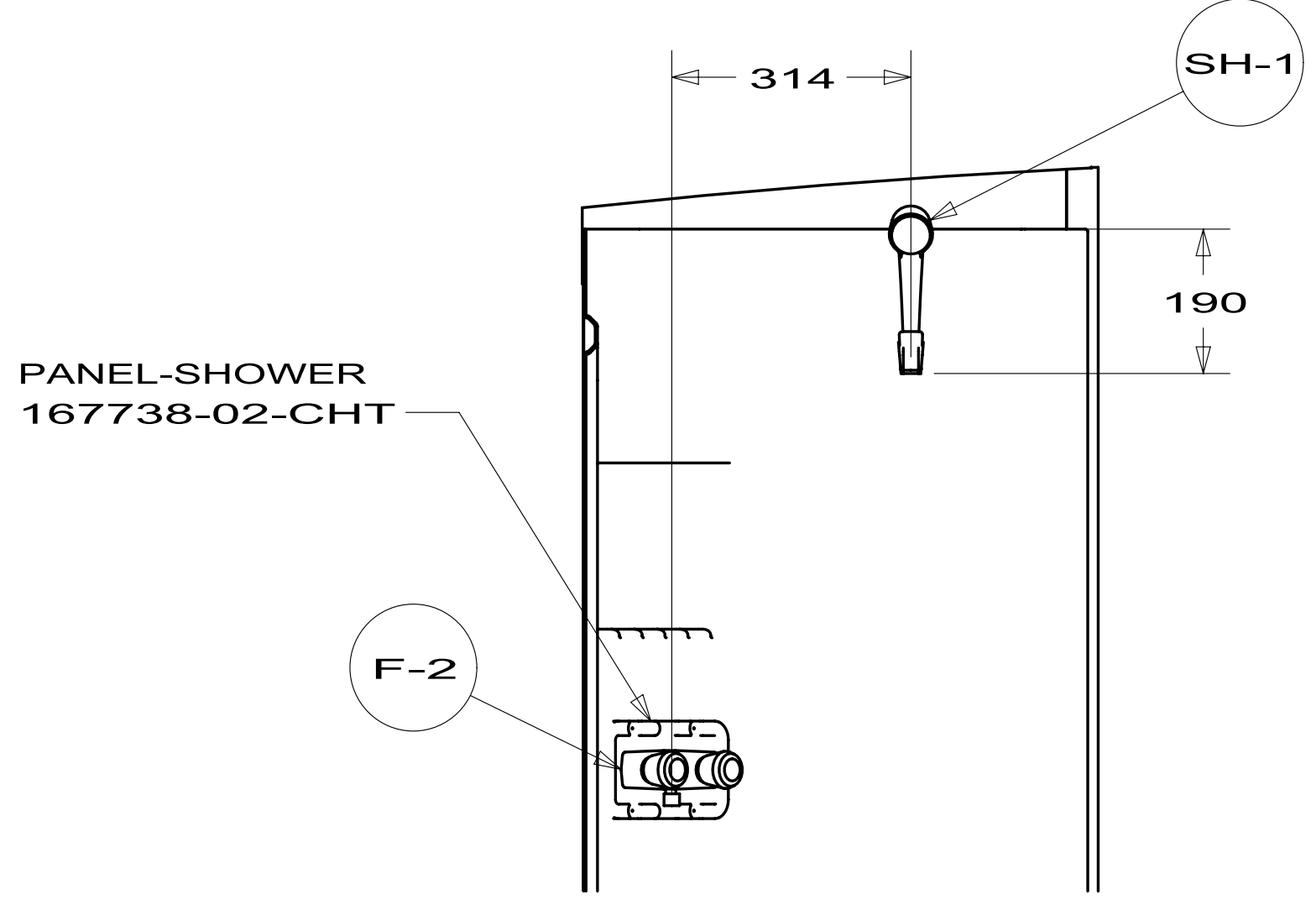


VIEW D

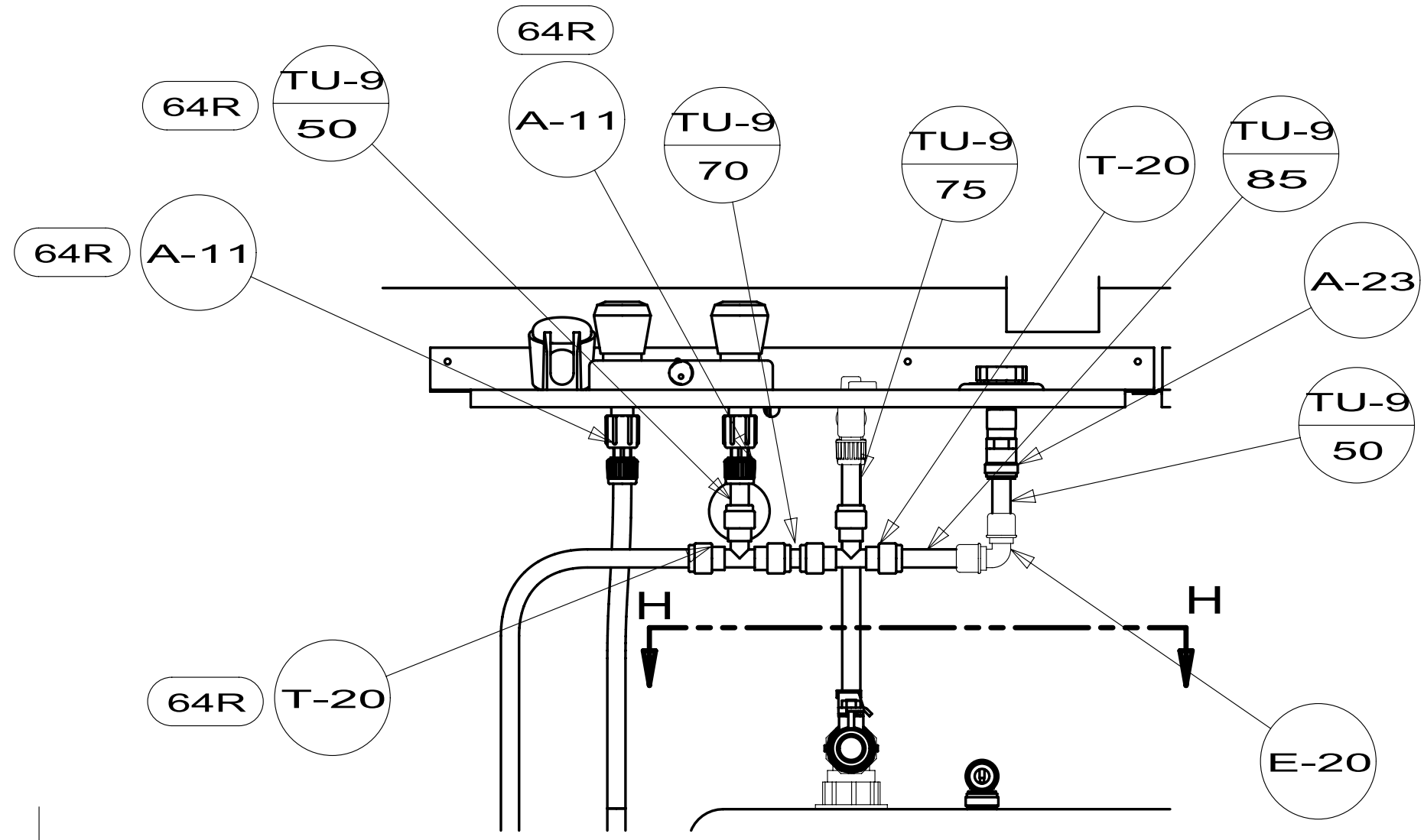


VIEW D

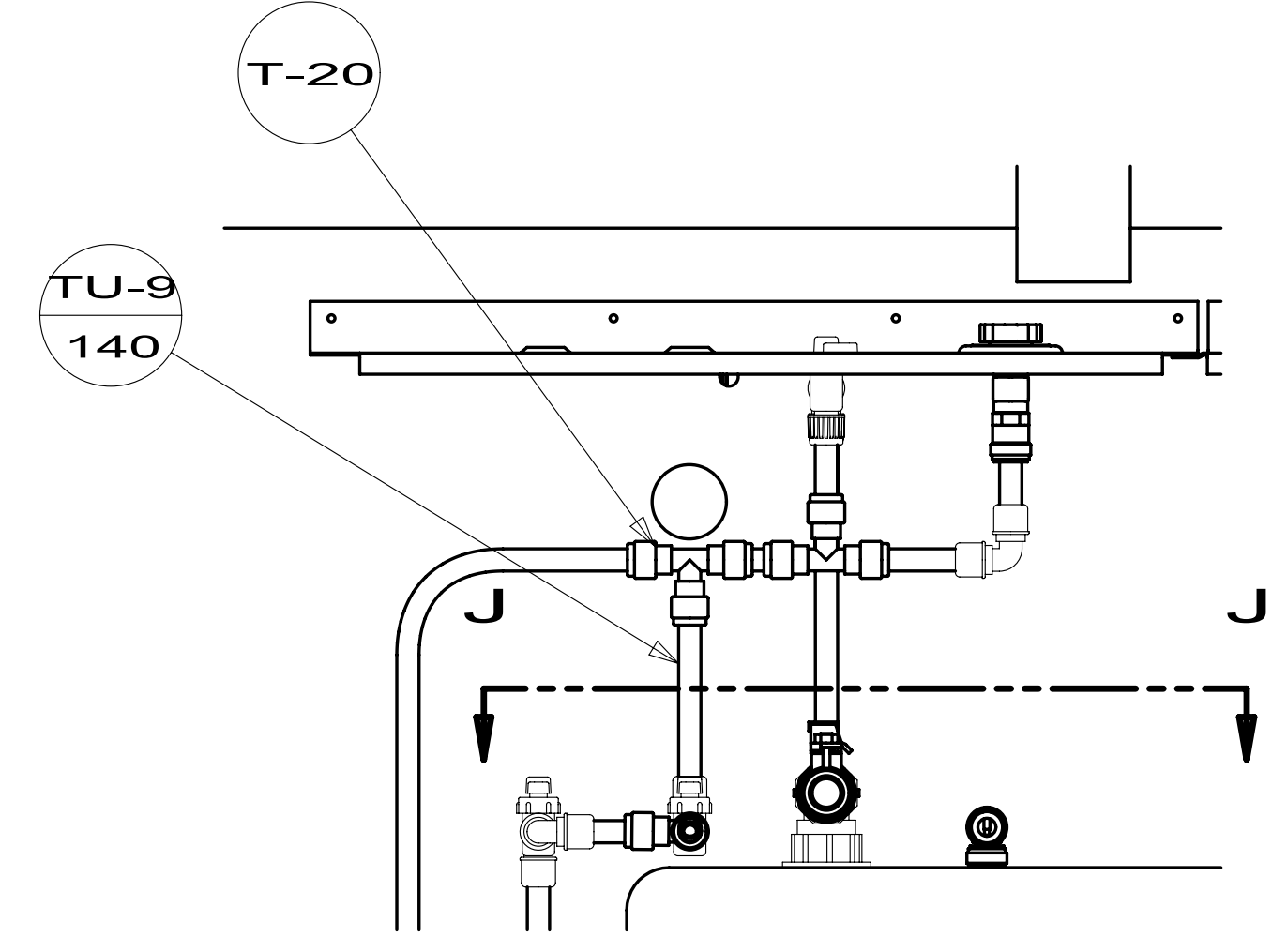
1J4



SECTION C-C (ROTATED)

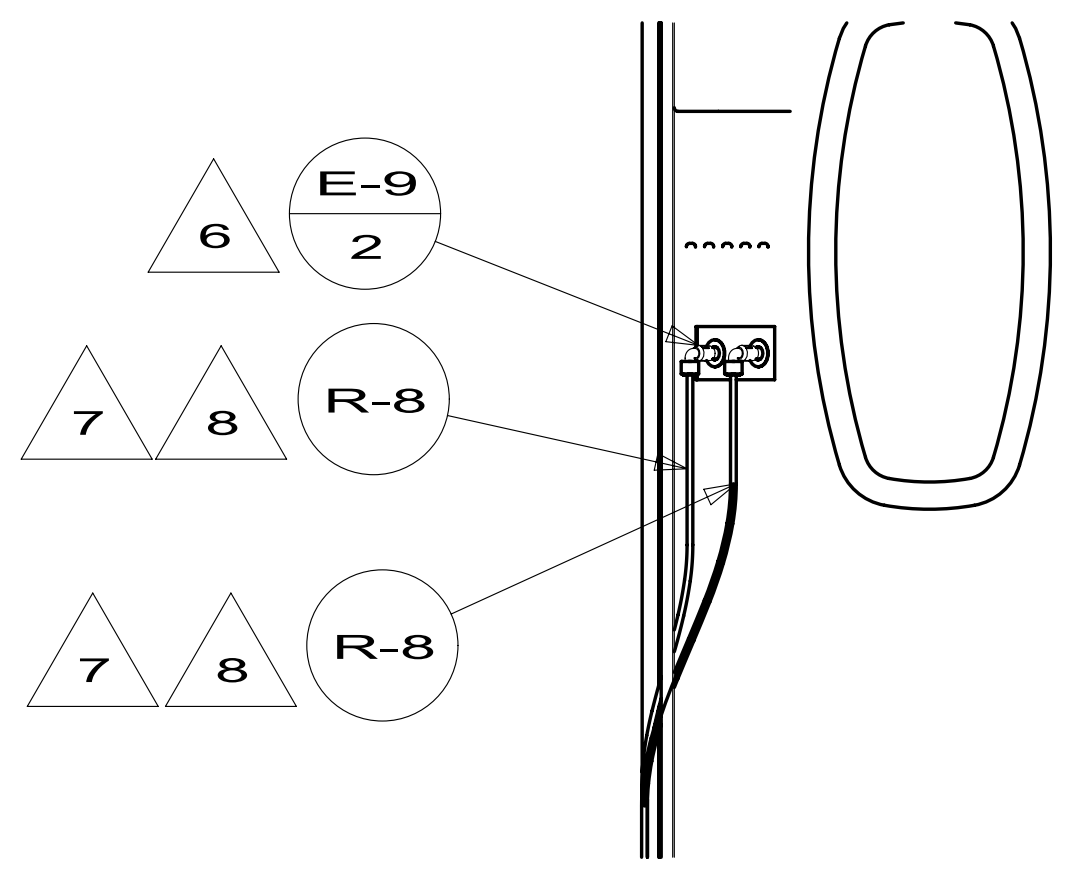


VIEW G

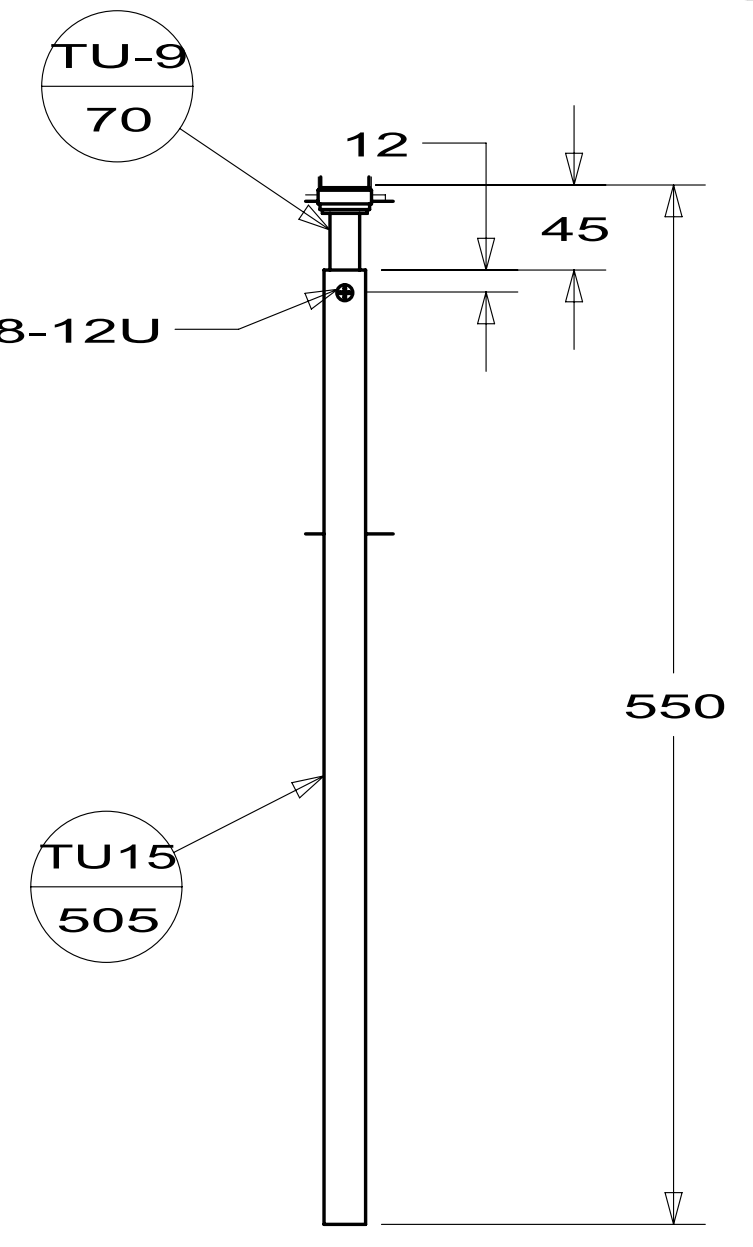


VIEW G

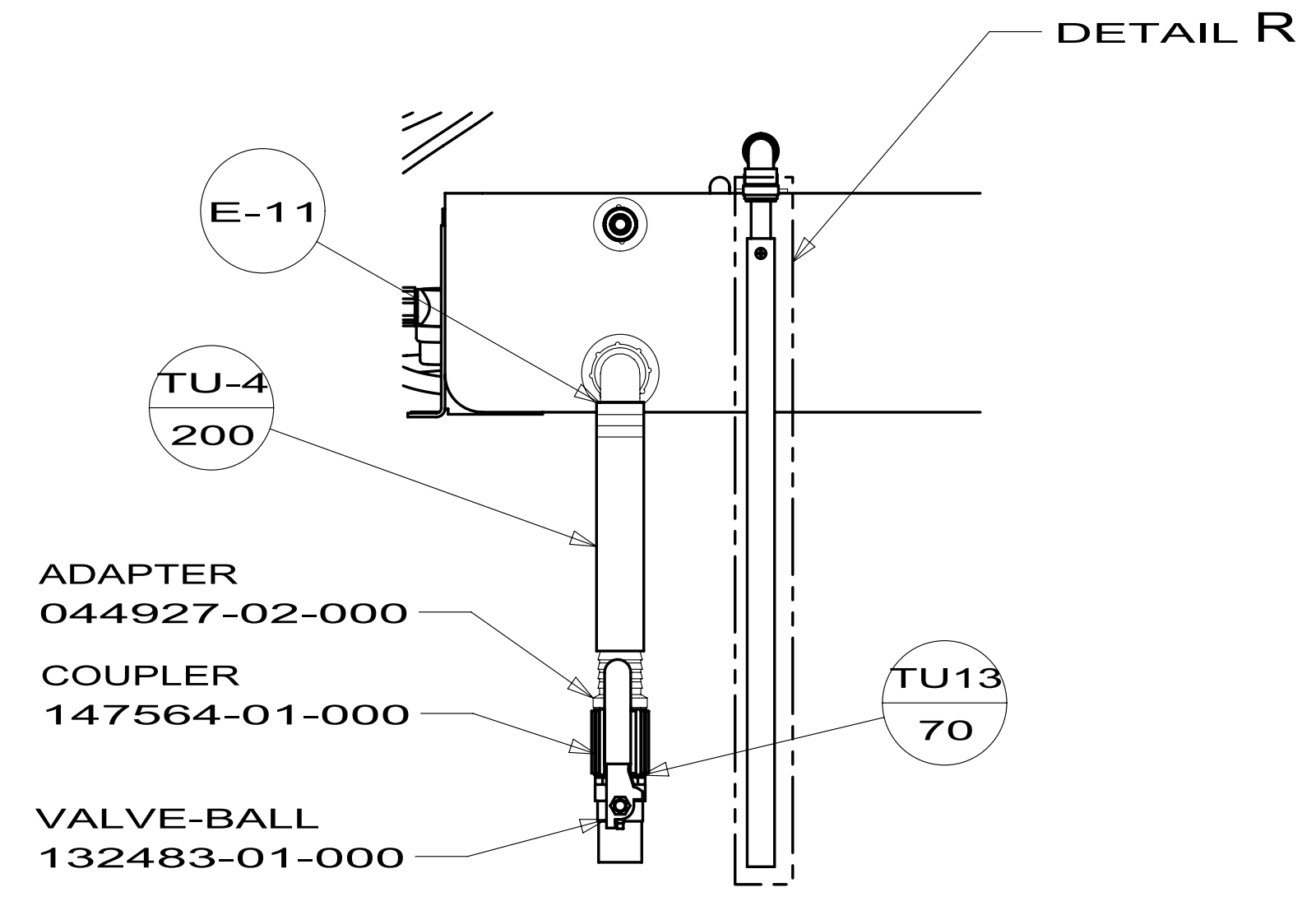
1J4



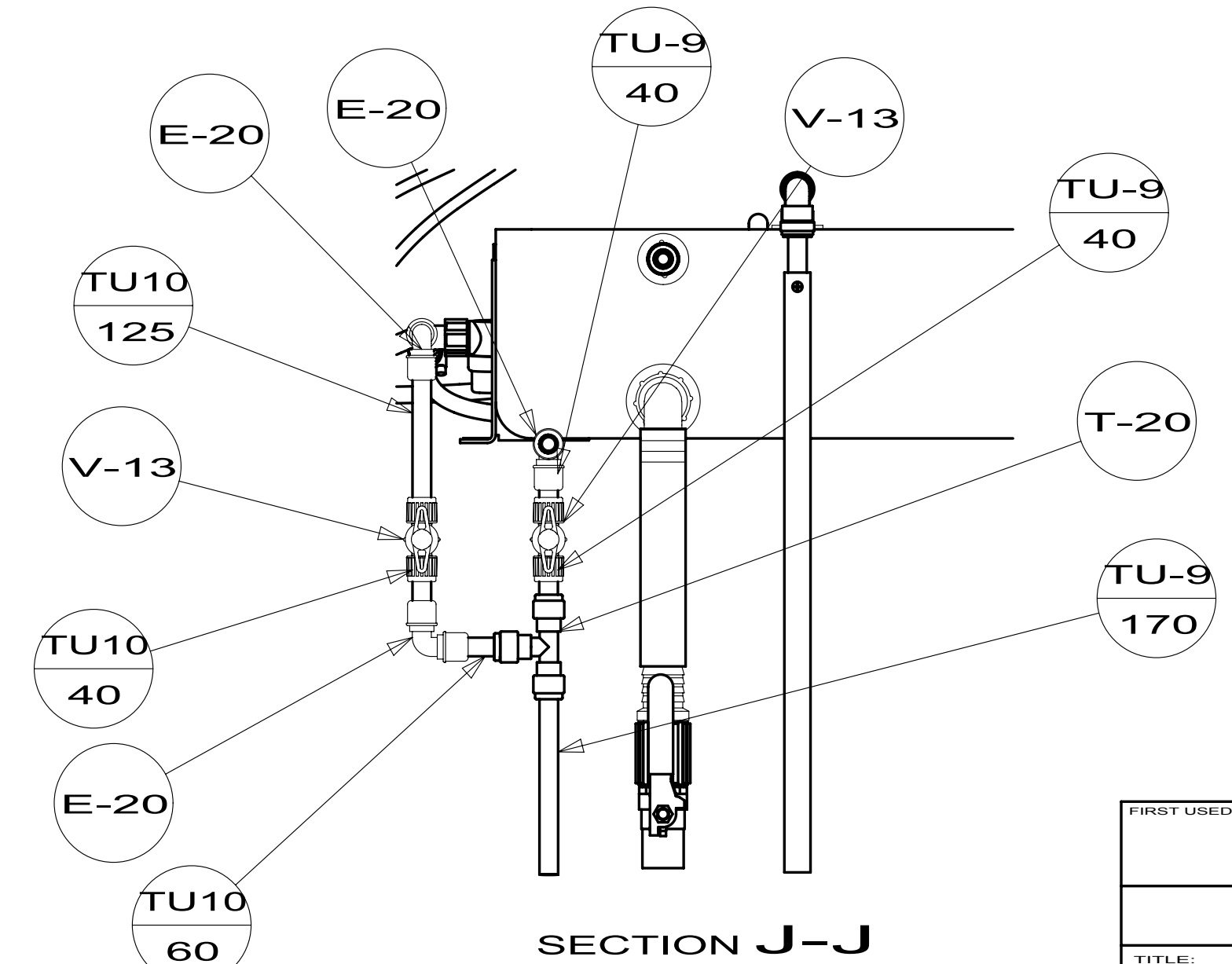
VIEW M (ROTATED)



DETAIL R



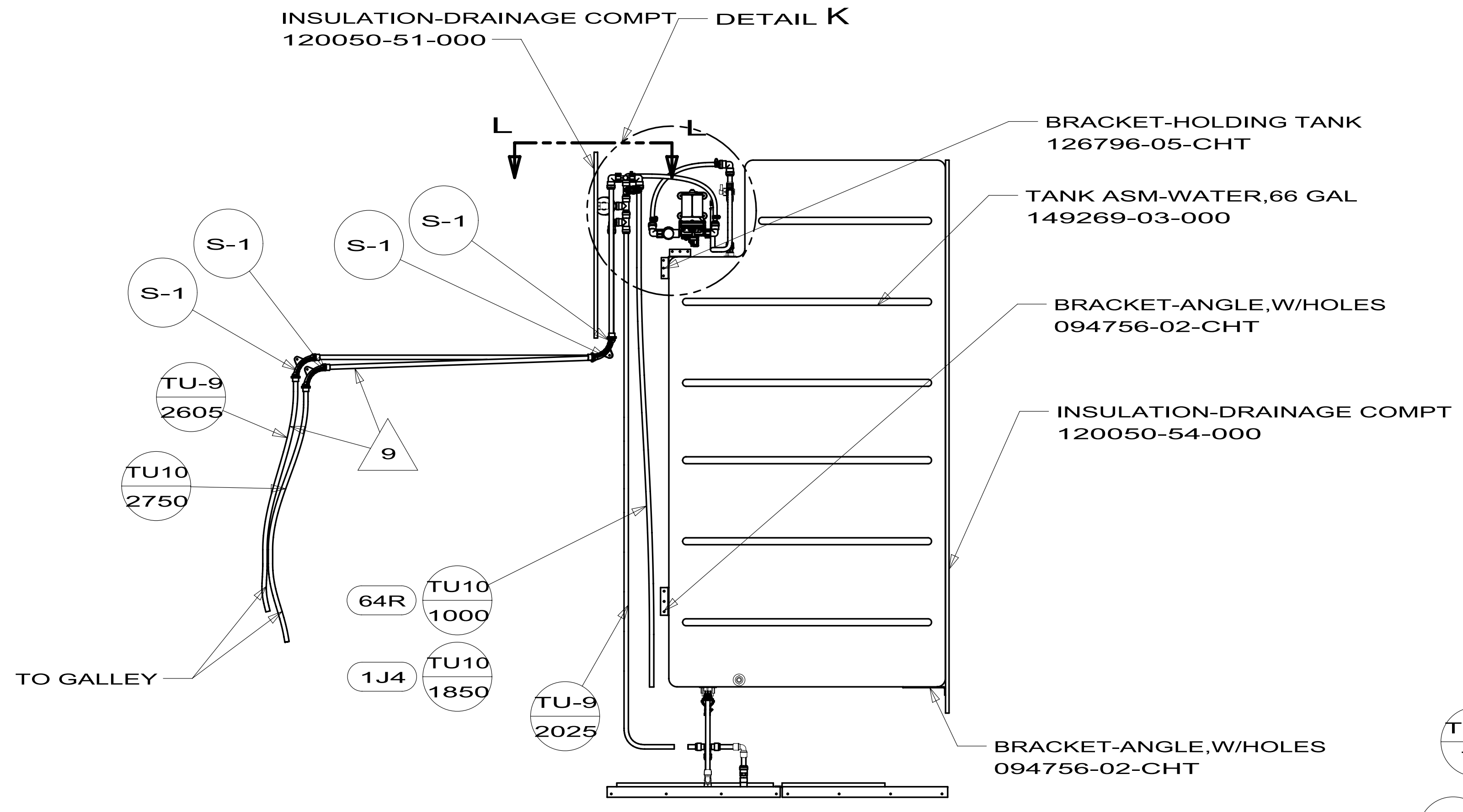
SECTION H-H



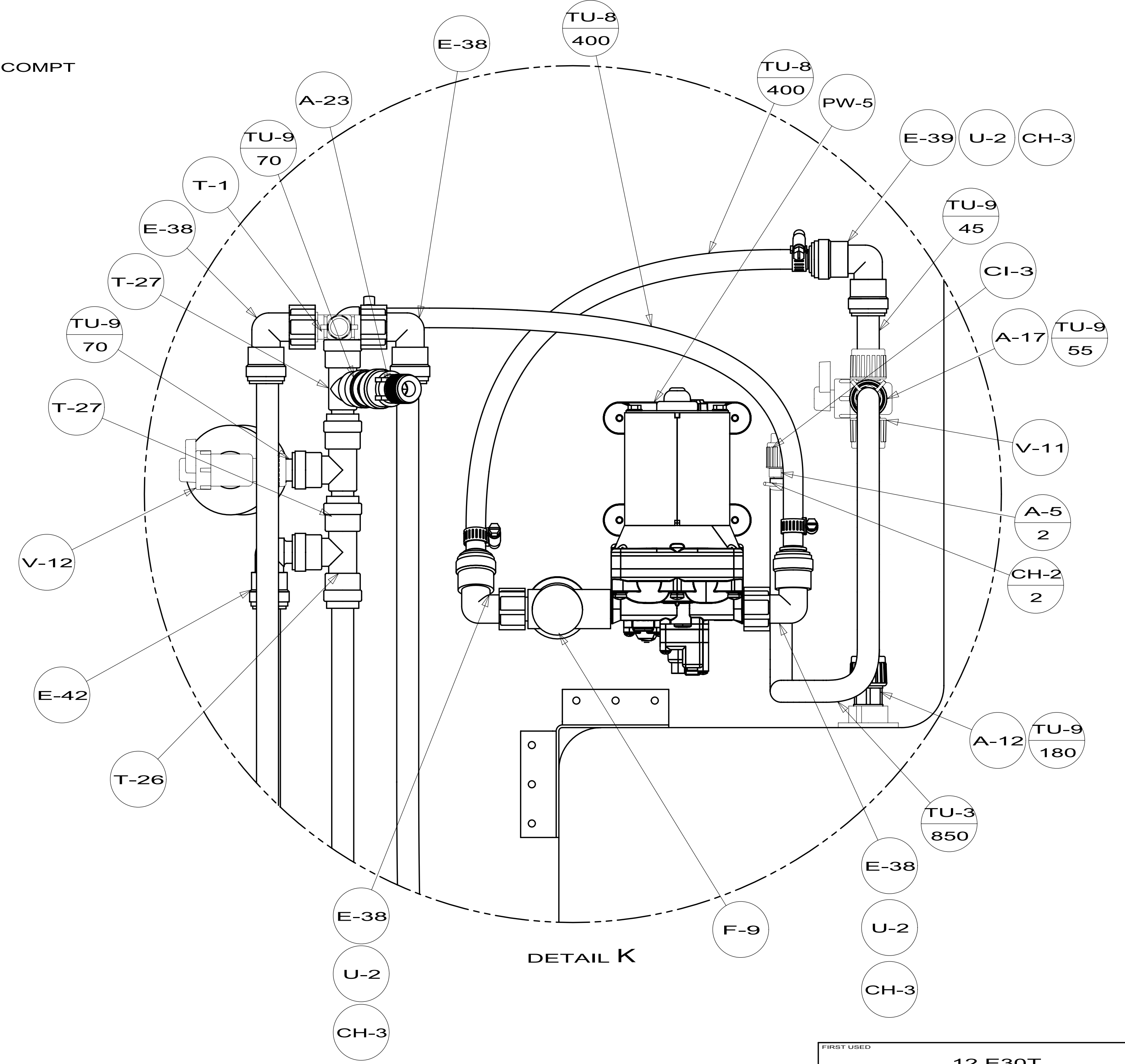
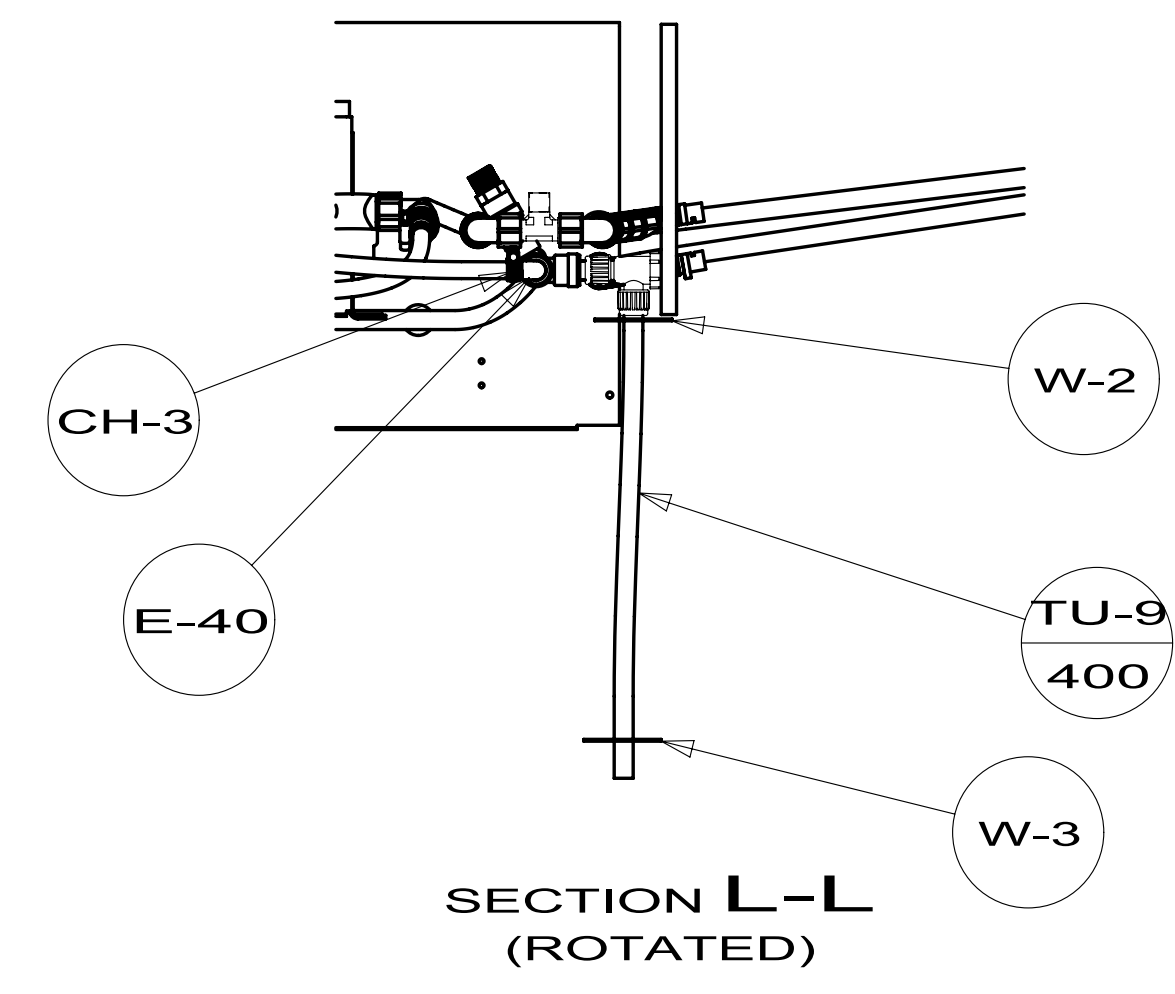
SECTION J-J

1J4

FIRST USED	12 E30T	
TITLE:	DO NOT SCALE DRAWING	
	WATER SYSTEM INSTL	
SHEET 3	PART NO. 177361	REV



ONLY SHOWING LINES UNDER FLOOR



FIRST USED	12 E30T	
TITLE:	DO NOT SCALE DRAWING	
SHEET 4	PART NO	177361
	REV	