

FRONT
OF
COACH

1B1 CODES/STANDARDS USA
265 CODES/STANDARDS-CSA/CMVSS

- 9 VALVE TERMINATION TEE TO BE POSITIONED AT 10° DOWN AND OUTBOARD.
- 8 SECURE PIPES TO CABINET USING WIRE TIE 108046-02-000, AND SCREW 000G67-10-12B.
- 7 SECURE VENT TUBES TO FLOOR WITH CLAMP 062401-02-000 (1), SCREW 000G67-10-12B (2), BRACKET 136878-01-CHT (1).
- 6 VENT PIPE MUST PROJECT 51 MIN AND 64 MAX ABOVE ROOF FOR PROPER FIT AND FUNCTION.
- 5. SEAL AROUND SHOWER WITH SILICONE.
- 4. USE SMOOTH PLUMBERS PUTTY 167459-01-000 TO SEAL STRAINER (.2 PER STRAINER).
- 3. ALL PIPE AND FITTINGS TO BE ASSEMBLED WITH SOLVENT 004020-01-000 (USA), 004020-02-000 (CAN)
- 2. SLOPE OF TRAP ARM MUST BE 6 PER 305 mm.
- 1. SLOPE OF HORIZONTAL PIPING TO BE MIN 3 PER 305 mm.

NOTES:

FOR
DRAINAGE
CALLOUTS
SEE DWG NO
116229-01-000

		COPYRIGHT 2011 WINNEBAGO INDUSTRIES, INC.
DTR	ORIG. DATE	
CHKR	ALL DIMENSIONS ARE IN MILLIMETERS	
P.E.		
M.E.	FIRST USED	
DSNR	12 E26P	
UNSPECIFIED TOLERANCES ARE:		MATERIAL:
WHOLE DIM (X)	: 3	
ONE-PLACE (X.X)	: 1.5	
TWO-PLACE (X.XX)	: 0.50	
ANGLE	: 1°	
THIRD ANGLE PROJECTION		
DO NOT SCALE DRAWING		REFER TO ES0018 FOR FASTENER TIGHTENING GUIDELINES
TITLE: DRAINAGE SYSTEM INSTL		
SHEET 1 OF 4	PART NO 178154	REV
REF:	1	

SINK-LAVATORY
096927-01-CHT
SEAL
091255-02-000 (A/R)

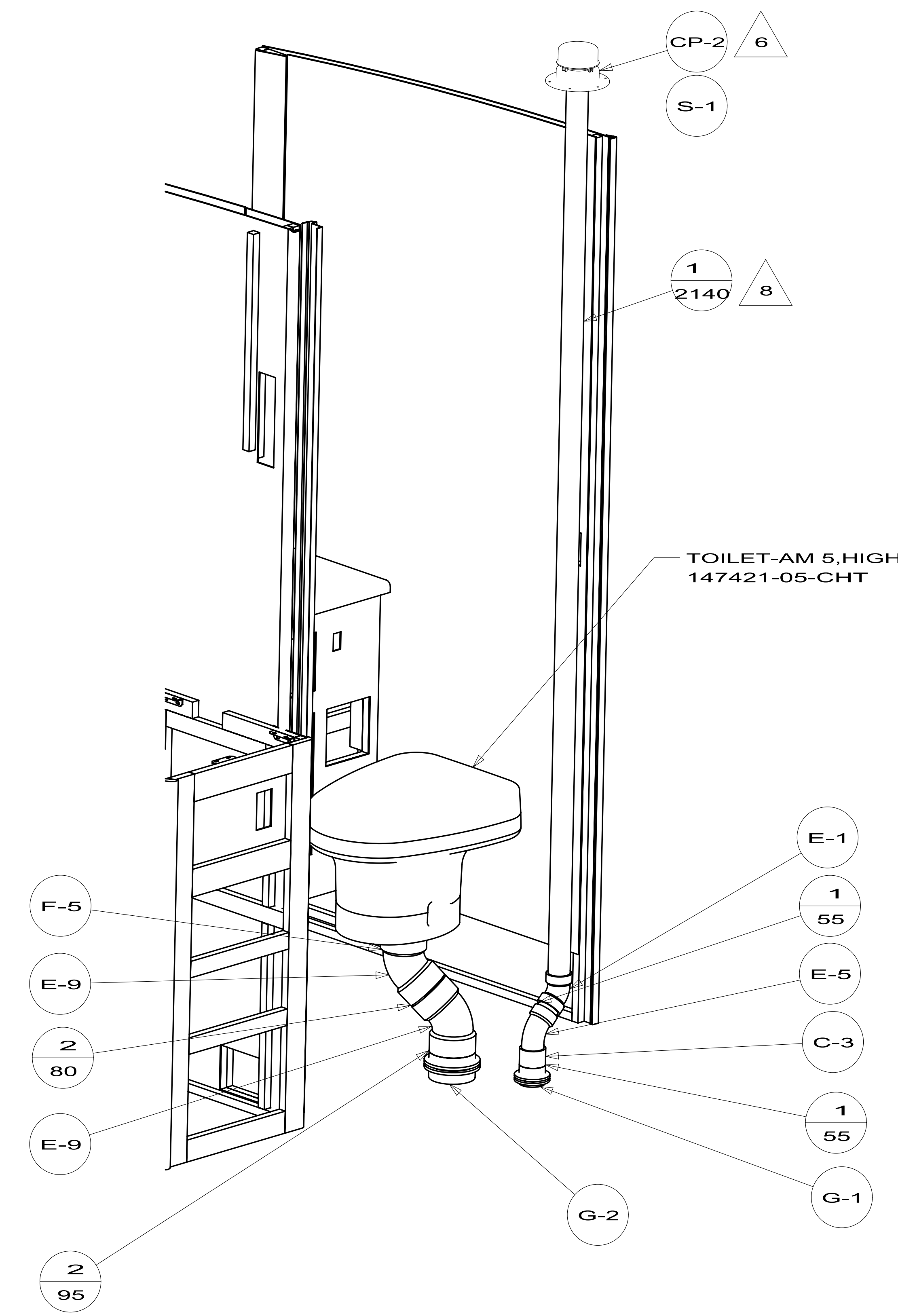
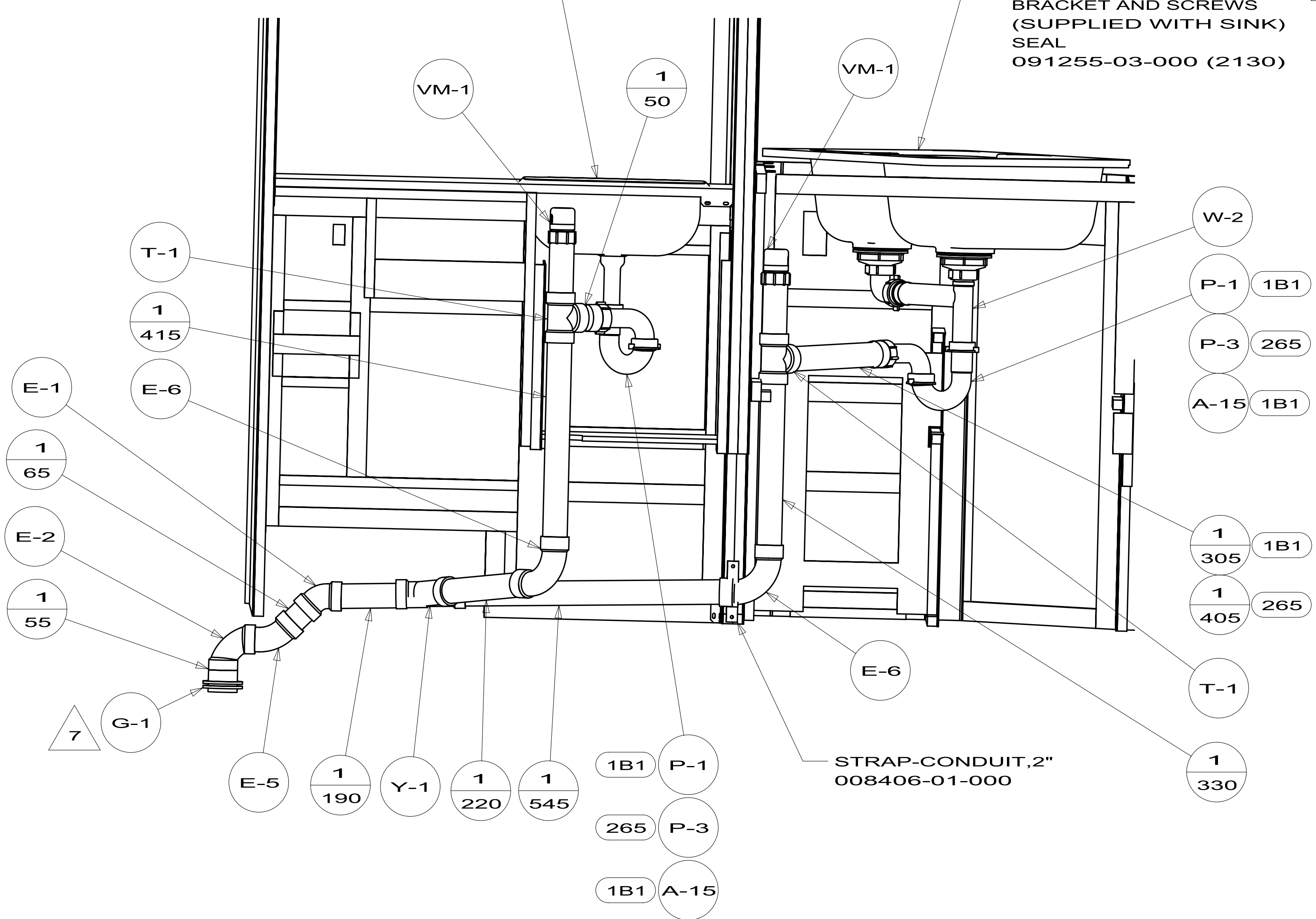
SINK-SMC, DBL L/S BASIN
163942-03-CHT (US/CAN)
STRAINER
092303-01-000 (2)
BRACKET AND SCREWS
(SUPPLIED WITH SINK)
SEAL
091255-03-000 (2130)

TOILET-AM 5, HIGH, W/O SPRAYER
147421-05-CHT

STRAP-CONDUIT, 2"
008406-01-000

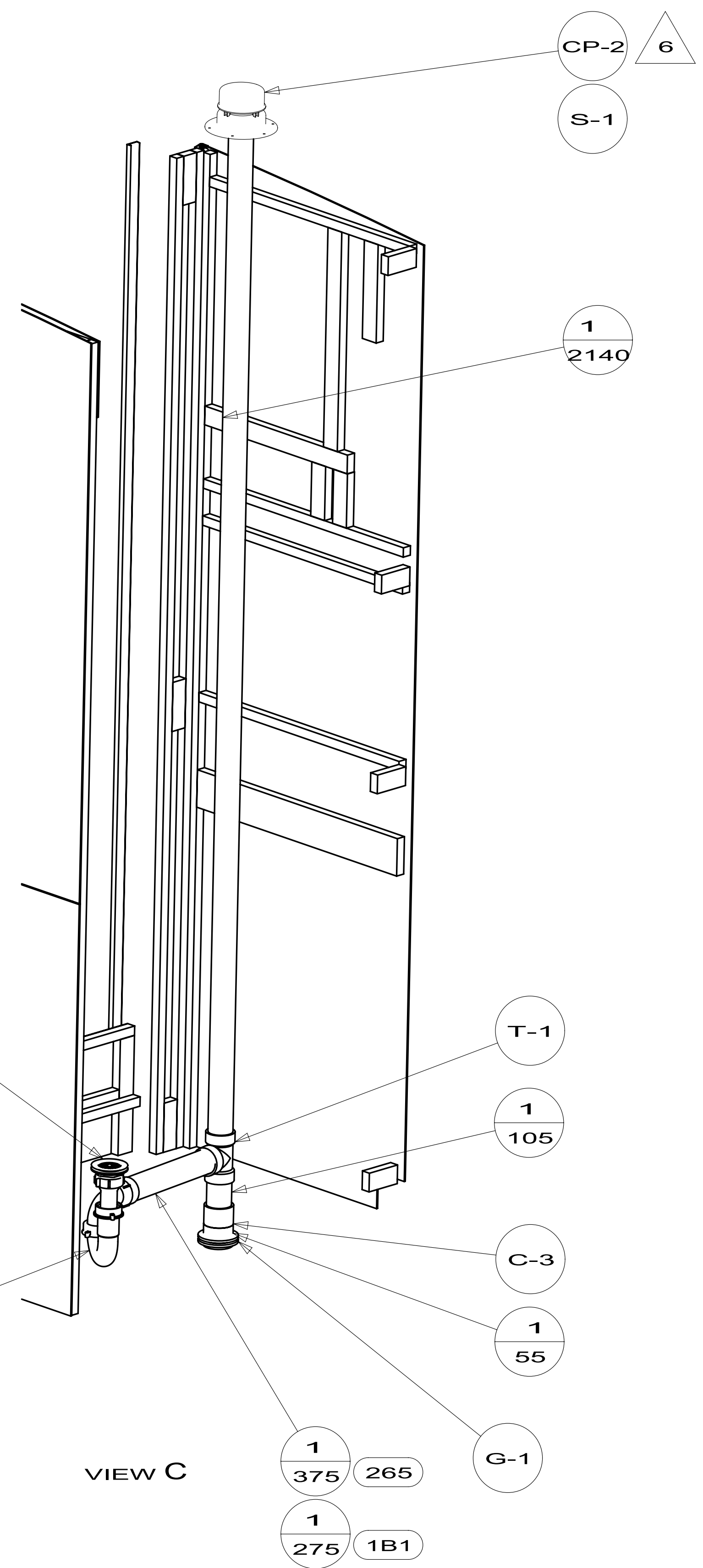
VIEW A

VIEW B



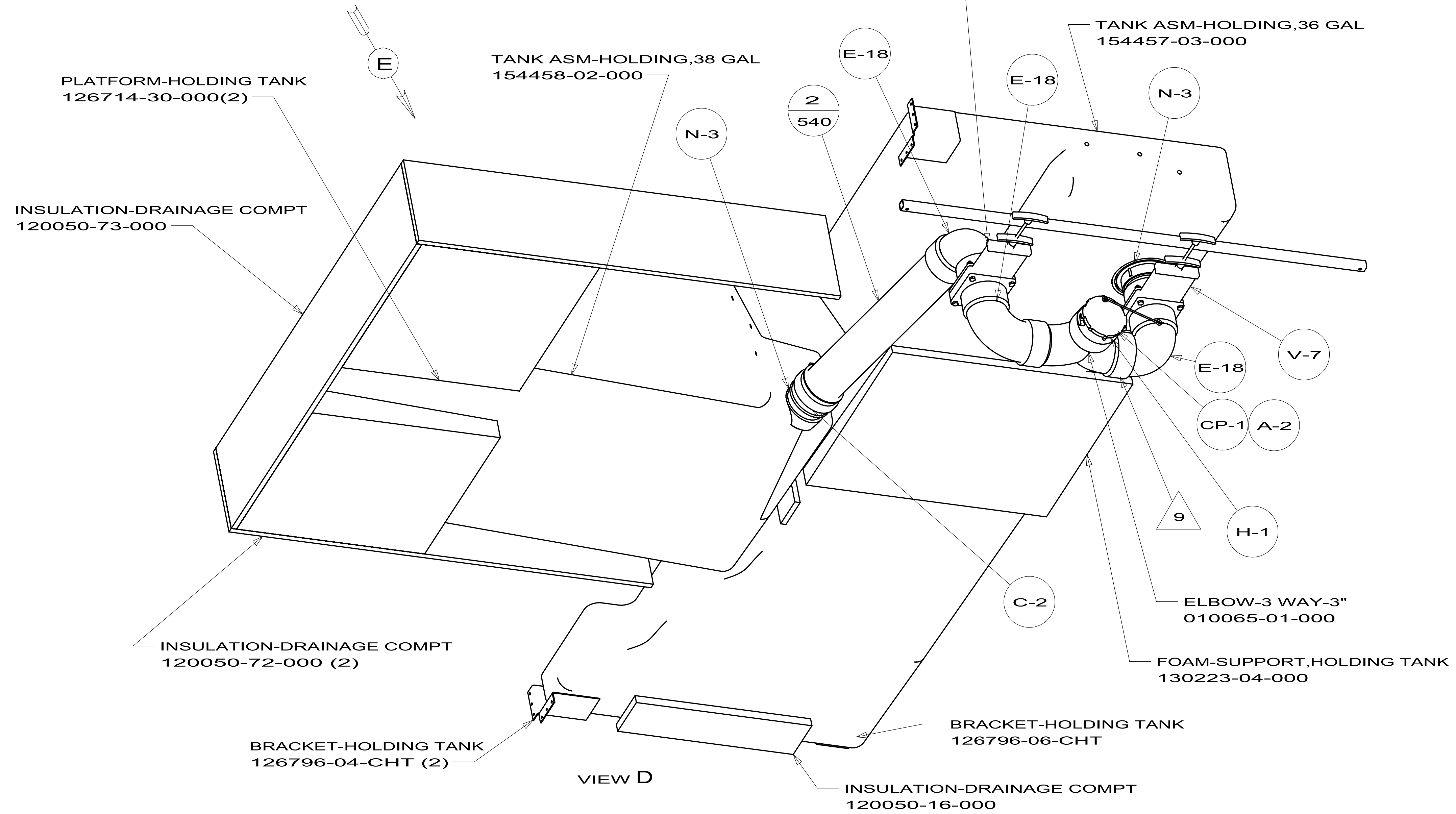
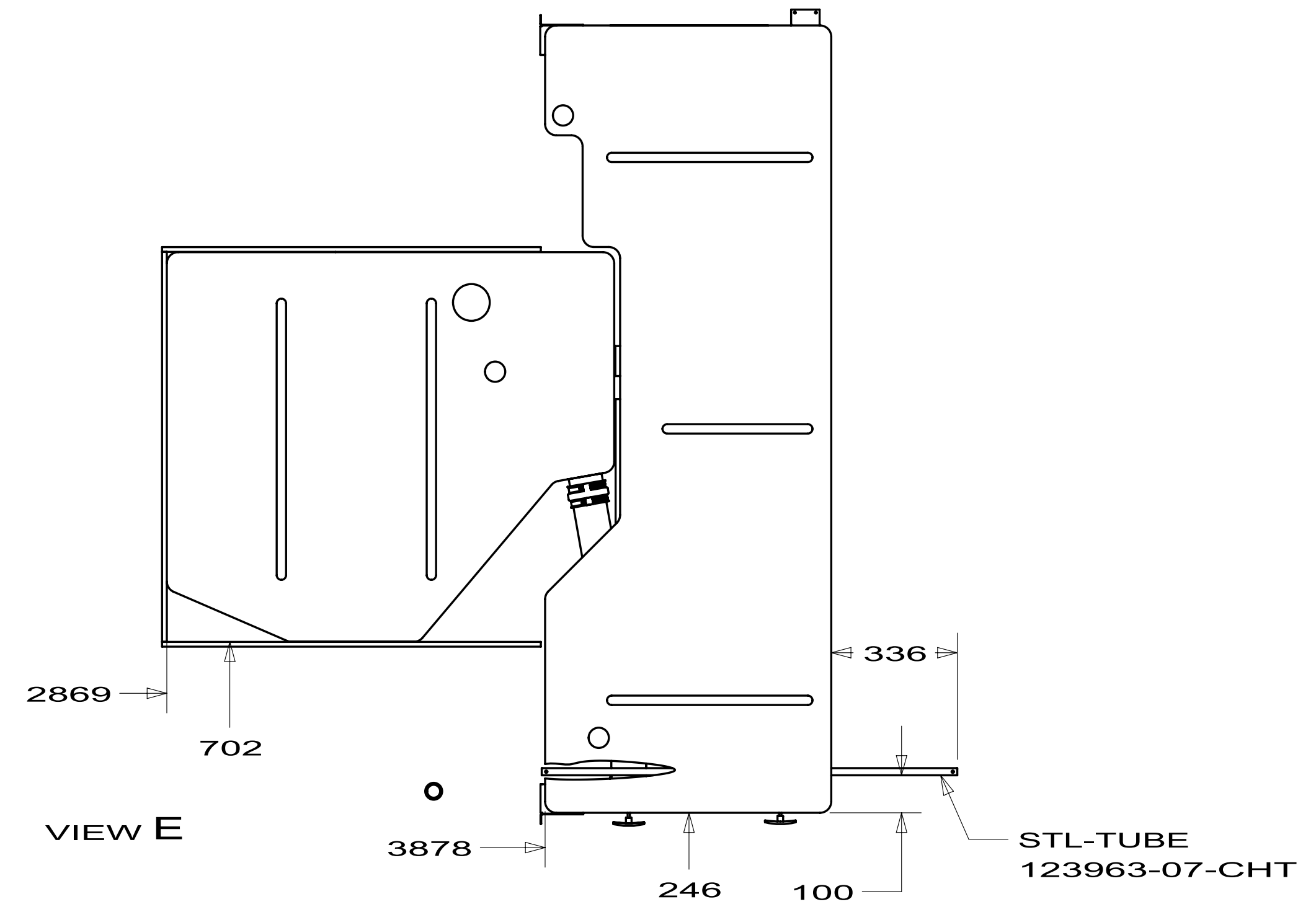
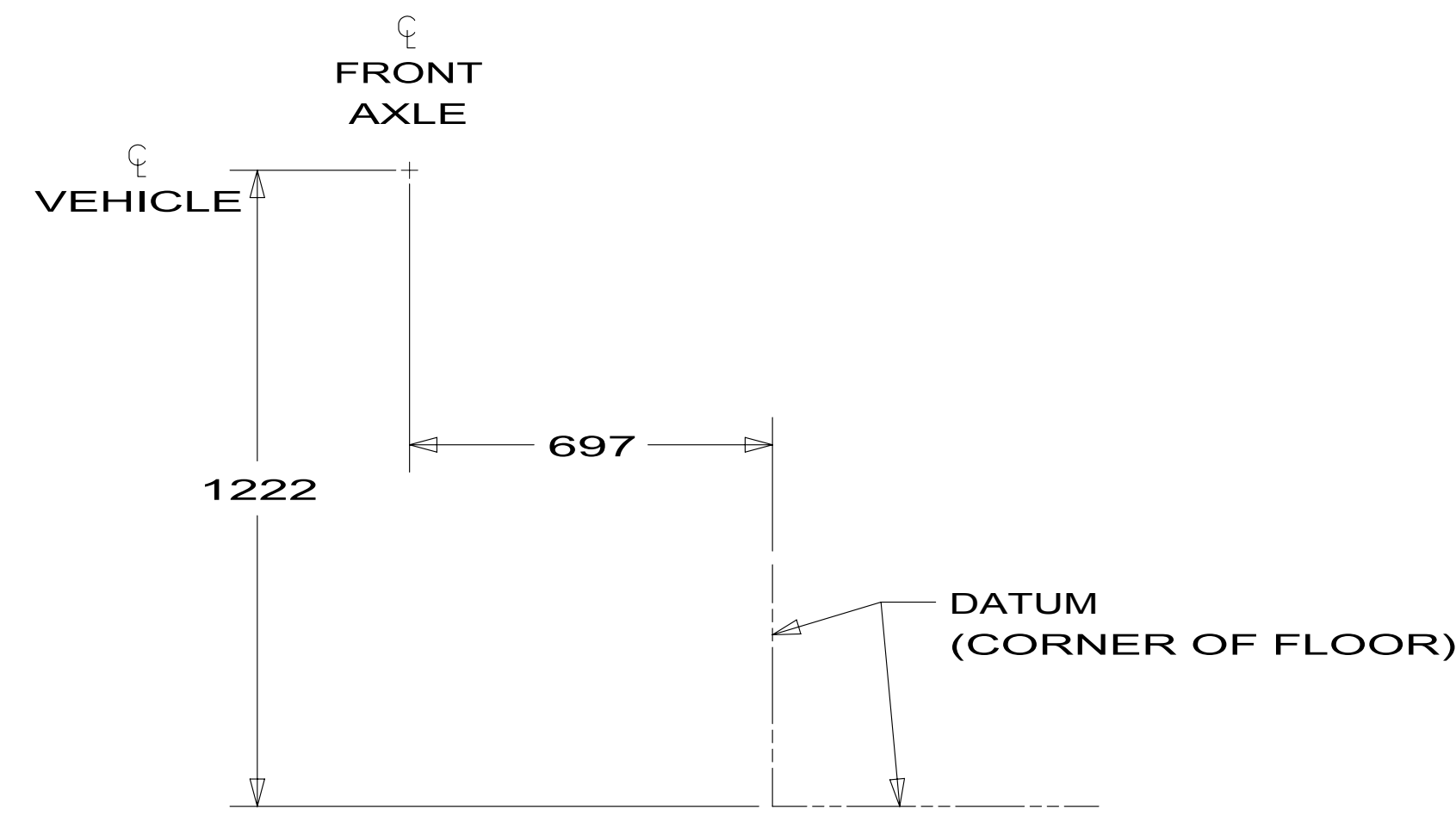
FIRST USED	12 E26P		
DO NOT SCALE DRAWING			
TITLE: DRAINAGE SYSTEM INSTL			
SHEET 2	PART NO	178154	REV

SHOWER INSTL
 147936-01-000
 000G11-08-12U (10)
 000G39-08-12U (6)
 STRAINER
 066440-01-000
 SEALER
 069640-01-000
 WASHER-RUBBER
 127440-02-CHT
 TAILPIECE
 011069-02-000
 NUT
 130403-01-000



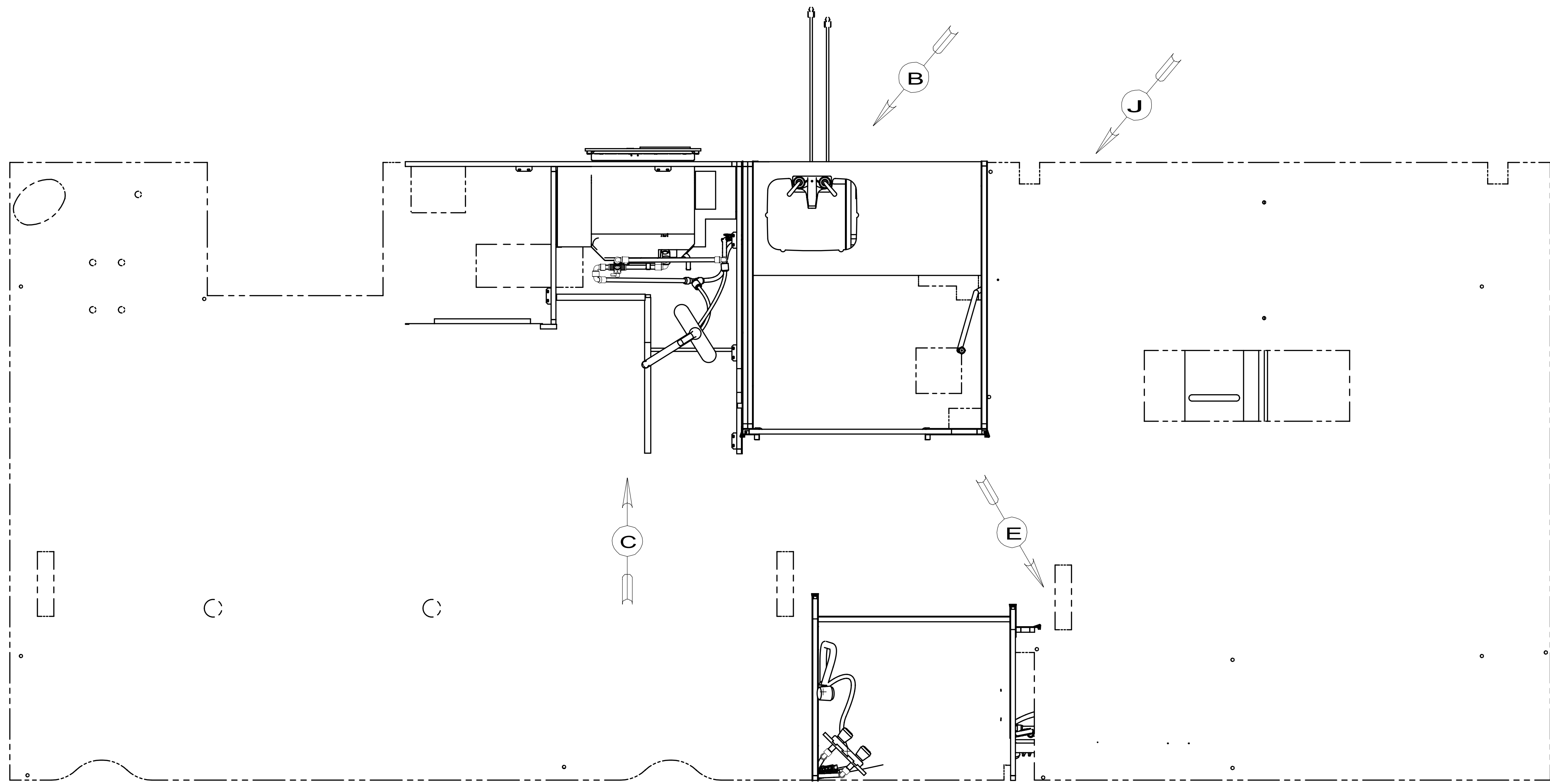
VIEW C

FIRST USED		
12 E26P		
DO NOT SCALE DRAWING		
TITLE: DRAINAGE SYSTEM INSTL		
SHEET 3	PART NO	REV
	178154	



VIEW D

FIRST USED	12 E26P	
DO NOT SCALE DRAWING		
TITLE: DRAINAGE SYSTEM INSTL		
SHEET 4	PART NO 178154	REV



- 53D WTR HTR-6GAL/ELE/LP/MOTOR/AID
- 64R EXTERIOR WASH STATION
- 1J4 EXT WASH STATION - WITHOUT
- 53F WATER HEATER-ELEC. IGNITION
- 53Z WTR HTR-6GAL/ELE/LP/MTR/AUTO

- NOTES:
- 6 ADD PIPE WRAP (LADDER SCRAP 110157-02) INSULATION HERE.
 - 5 ADD TEFLON TAPE 010405-01-000.
 - 4 ADD TEFLON TAPE 010405-02-000.
 - 3. ALL TUBING TO BE SECURED AT 1200 INTERVALS MAXIMUM WITH CLAMP 010495-01-000 AND SCREW 000G67-10-12B OR EQUIVALENT.
 - 2. TUBING TO BE INSTALLED WITH SUFFICIENT SLOPE TO PROVIDE DRAINAGE TO NEAREST VALVE.
 - 1. PLASTIC FITTINGS TO BE SEALED WITH SEALANT 084456-01-000.

FOR WATER CALLOUTS SEE DWG NO 116230-01-000

WINNEBAGO INDUSTRIES		COPYRIGHT 2011 WINNEBAGO INDUSTRIES, INC.	
DTR	ORIG. DATE	ALL DIMENSIONS ARE IN MILLIMETERS	
CHKR			
P.E.			
M.E.	FIRST USED	12 E26P	
DSNR			
UNSPECIFIED TOLERANCES ARE:		MATERIAL:	
WHOLE DIM (X)	: 3		
ONE-PLACE (X.X)	: 1.5		
TWO-PLACE (X.XX)	: 0.50		
ANGLE	: 1°		
THIRD ANGLE PROJECTION			
DO NOT SCALE DRAWING		REFER TO ES0018 FOR FASTENER TIGHTENING GUIDELINES	
TITLE: WATER SYSTEM INSTL			
SHEET 1 OF 5	PART NO 178153	REV	
REF:	1	6/10/2011	

PANEL-SHOWER
167738-02-CHT
NUT-SPEED U
040921-05-000(4)

FAUCET-LAV,DUAL CONTROL
148886-03-CHT

TO TOILET

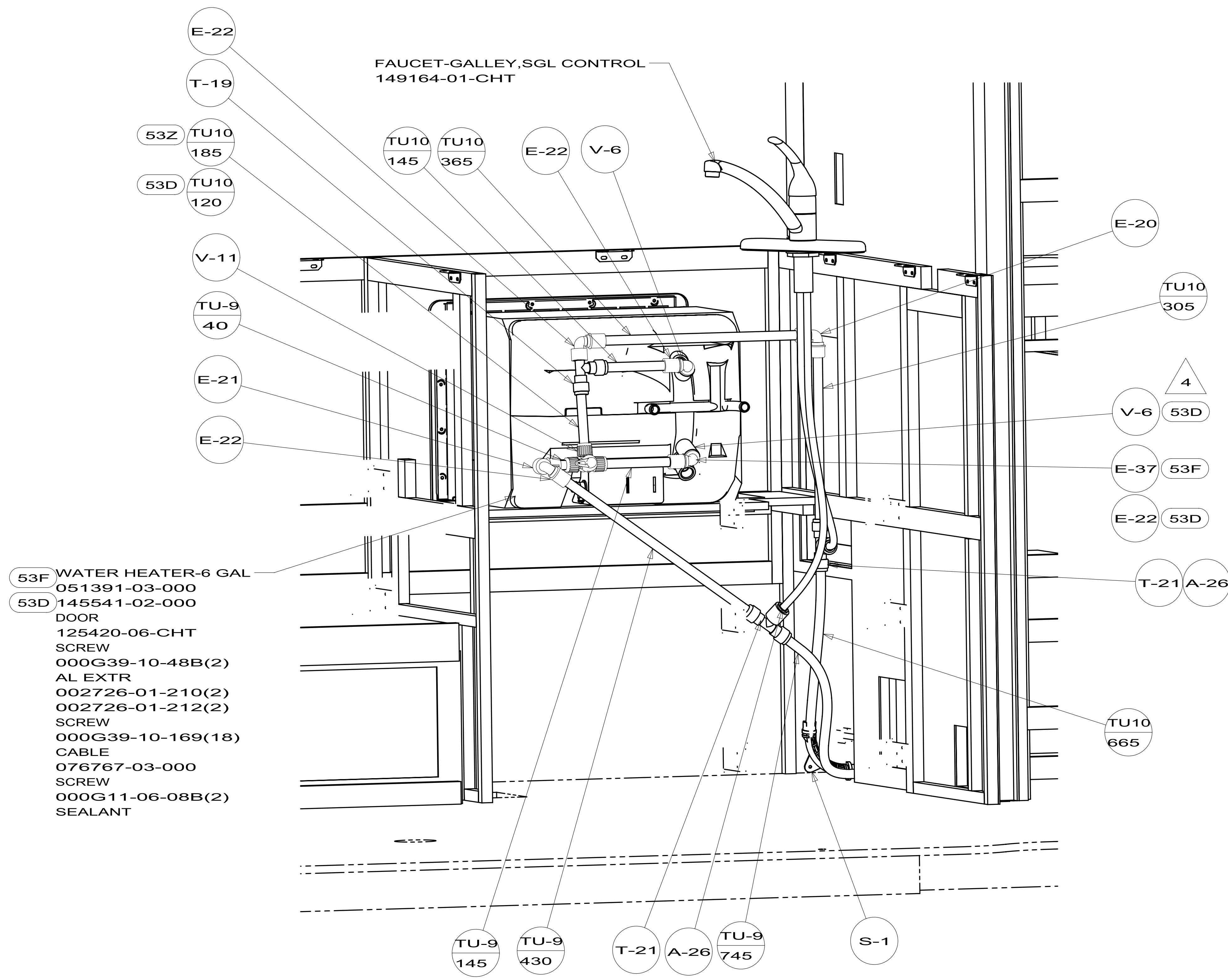
388
134

DETAIL A

DETAIL B

DETAIL C

FIRST USED	12 E26P	
TITLE:	DO NOT SCALE DRAWING	
	WATER SYSTEM INSTL	
SHEET 2	PART NO 178153	REV

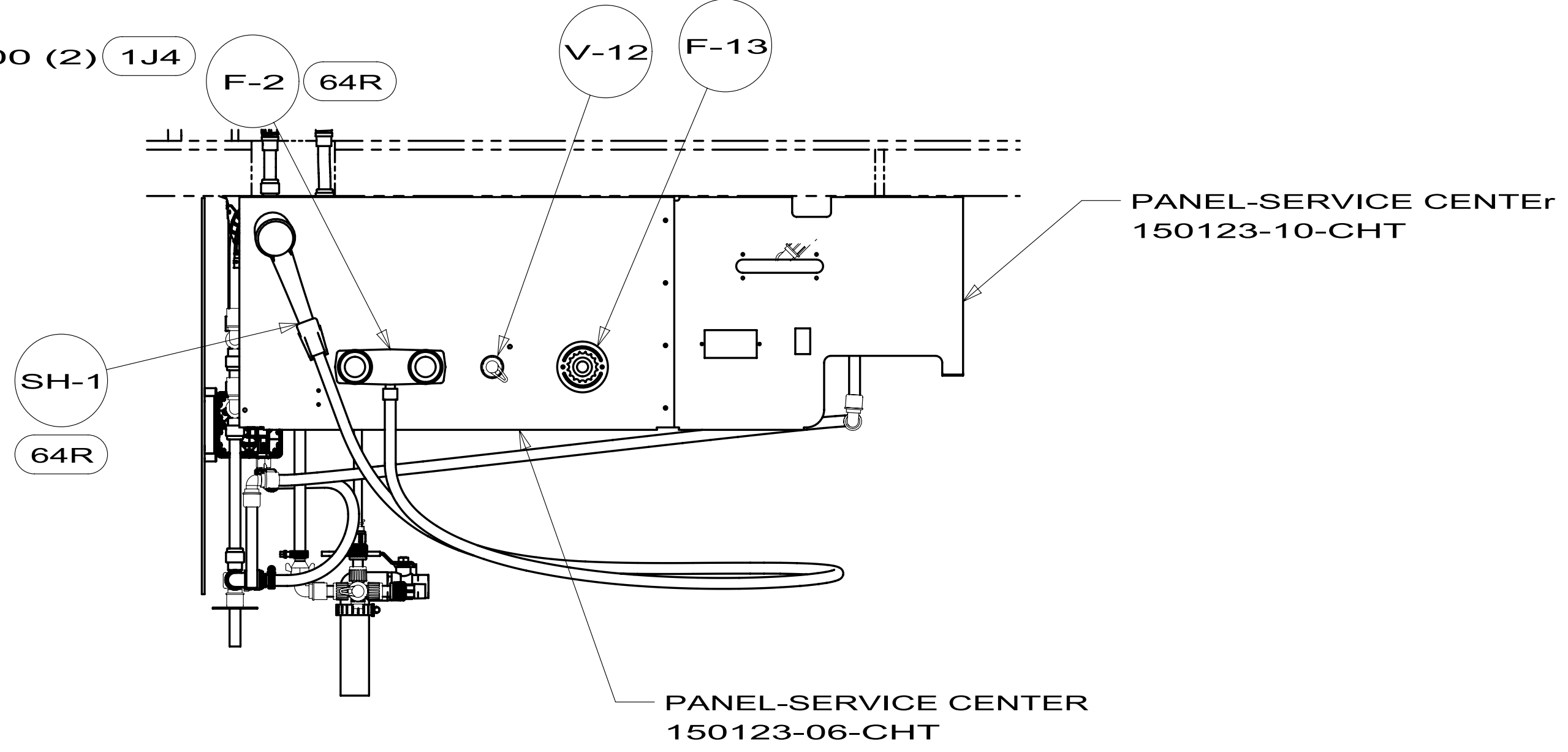


- 53F WATER HEATER-6 GAL
051391-03-000
- 53D 145541-02-000
DOOR
125420-06-CHT
SCREW
000G39-10-48B(2)
AL EXTR
002726-01-210(2)
002726-01-212(2)
SCREW
000G39-10-169(18)
CABLE
076767-03-000
SCREW
000G11-06-08B(2)
SEALANT

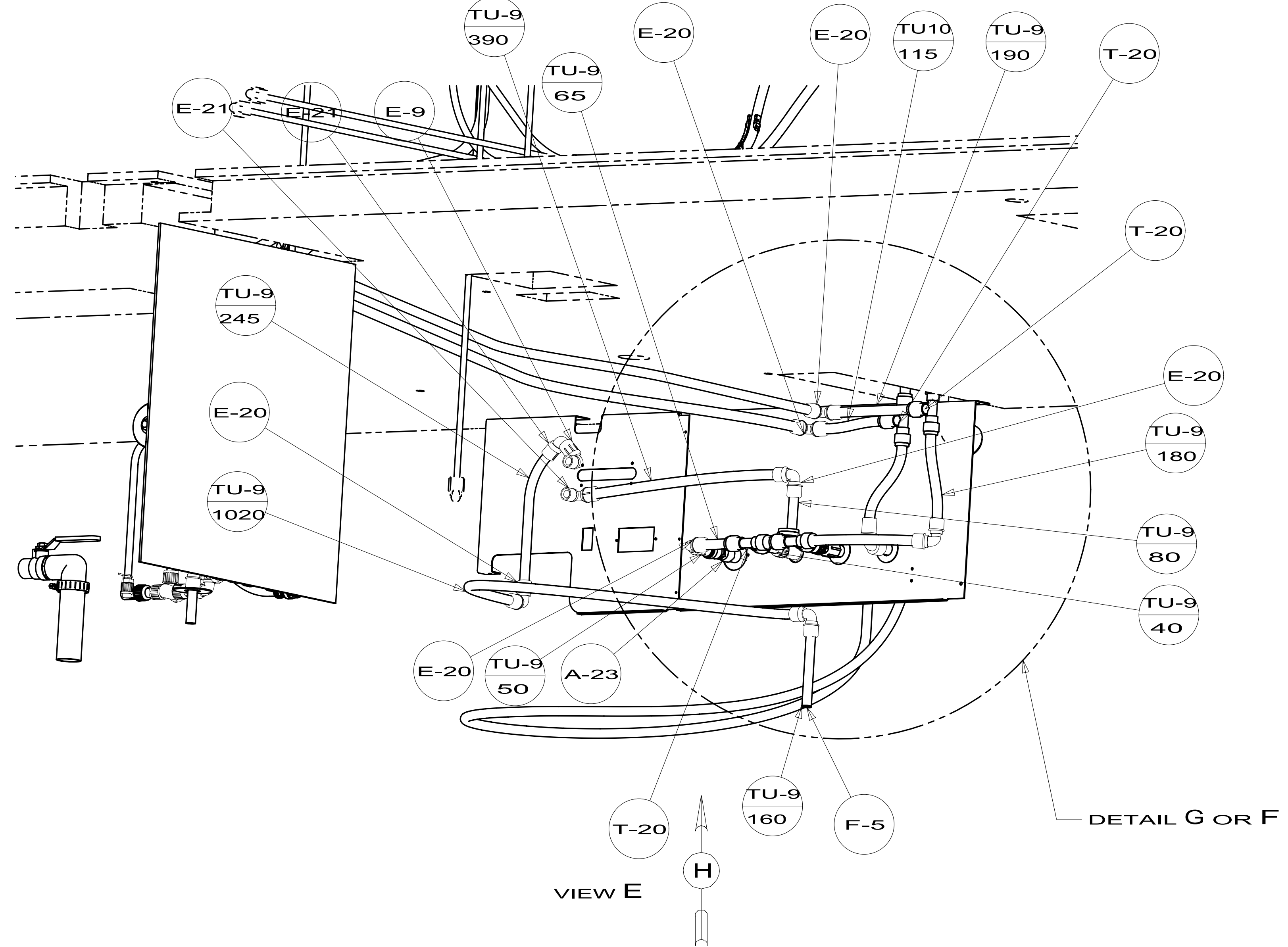
FAUCET-GALLEY, SGL CONTROL
149164-01-CHT

DETAIL C

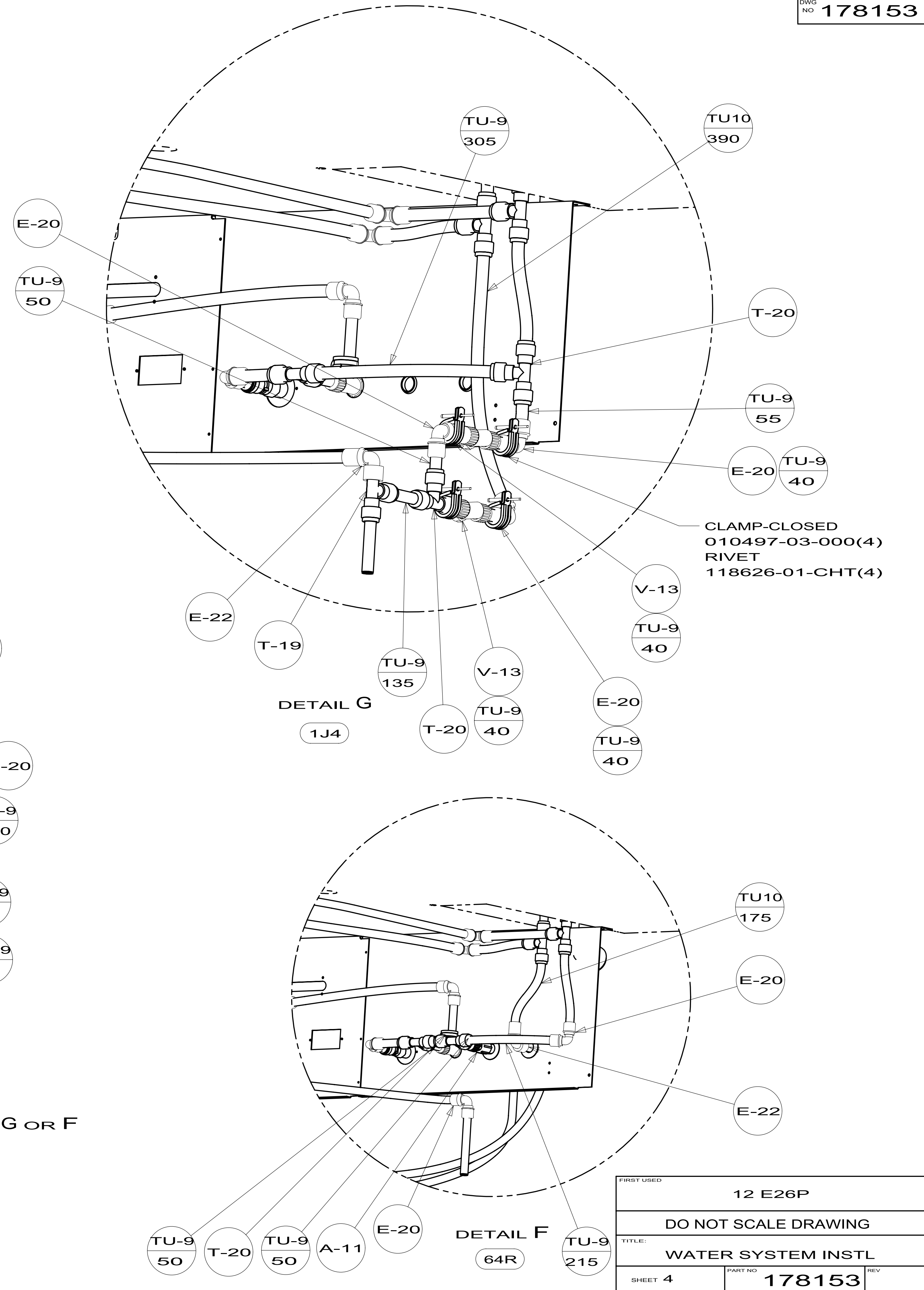
FIRST USED	12 E26P	
DO NOT SCALE DRAWING		
TITLE: WATER SYSTEM INSTL		
SHEET 3	PART NO 178153	REV



VIEW D



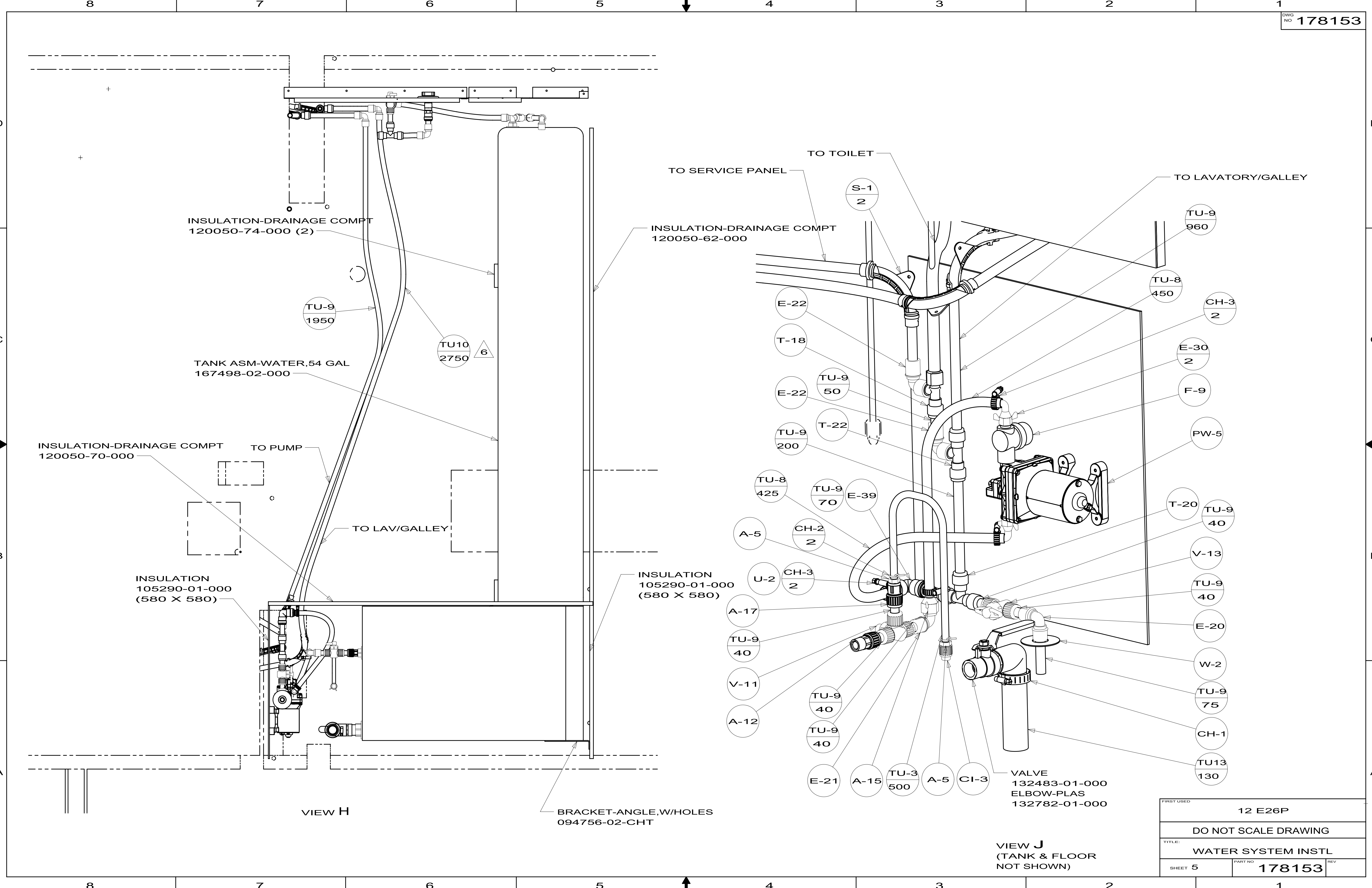
VIEW E



DETAIL G

DETAIL F

FIRST USED	12 E26P	
TITLE:	DO NOT SCALE DRAWING	
SHEET 4	PART NO	178153
		REV



FIRST USED	12 E26P	
DO NOT SCALE DRAWING		
TITLE: WATER SYSTEM INSTL		
SHEET 5	PART NO 178153	REV