

B

A

- 9. SEE DRAWING 061607 FOR INSTALLATION OF GROMMETS.
- 8. SECURE DRAINAGE PIPES TO CABINET USING WIRE TIE 108046-02-000, AND SCREW 000G67-10-12B AT INTERVALS OF NOT OF NOT MORE THAN 4 FEET APART.
- 7. SECURE VENT PIPE TO FLOOR WITH CLAMP 062401-02-000 (2), SCREW 000G67-10-12B (2), BRACKET 136878-01-CHT (2).
- 6. VENT PIPE MUST PROJECT 51 MIN AND 64 MAX ABOVE ROOF FOR PROPER FIT AND FUNCTION. ADD S-1 (116666-01-CHT SEAL-VENT PIPE) AROUND PIPE ON ROOF BEFORE VENT CAP IS INSTALLED.
- 5. SEAL AROUND SHOWER WITH SILICONE.
- 4. USE SMOOTH PLUMBERS PUTTY 167459-01-000 TO SEAL STRAINER (0.2 PER STRAINER).
- 3. ALL PIPE AND FITTINGS TO BE ASSEMBLED WITH SOLVENT 004020-01-000 (USA), 004020-02-000 (CAN)
- 2. SLOPE OF TRAP ARM MUST BE 6 PER 305 mm.
- 1. SLOPE OF HORIZONTAL PIPING TO BE MINIMUM OF 3 PER 305 mm.

NOTES:

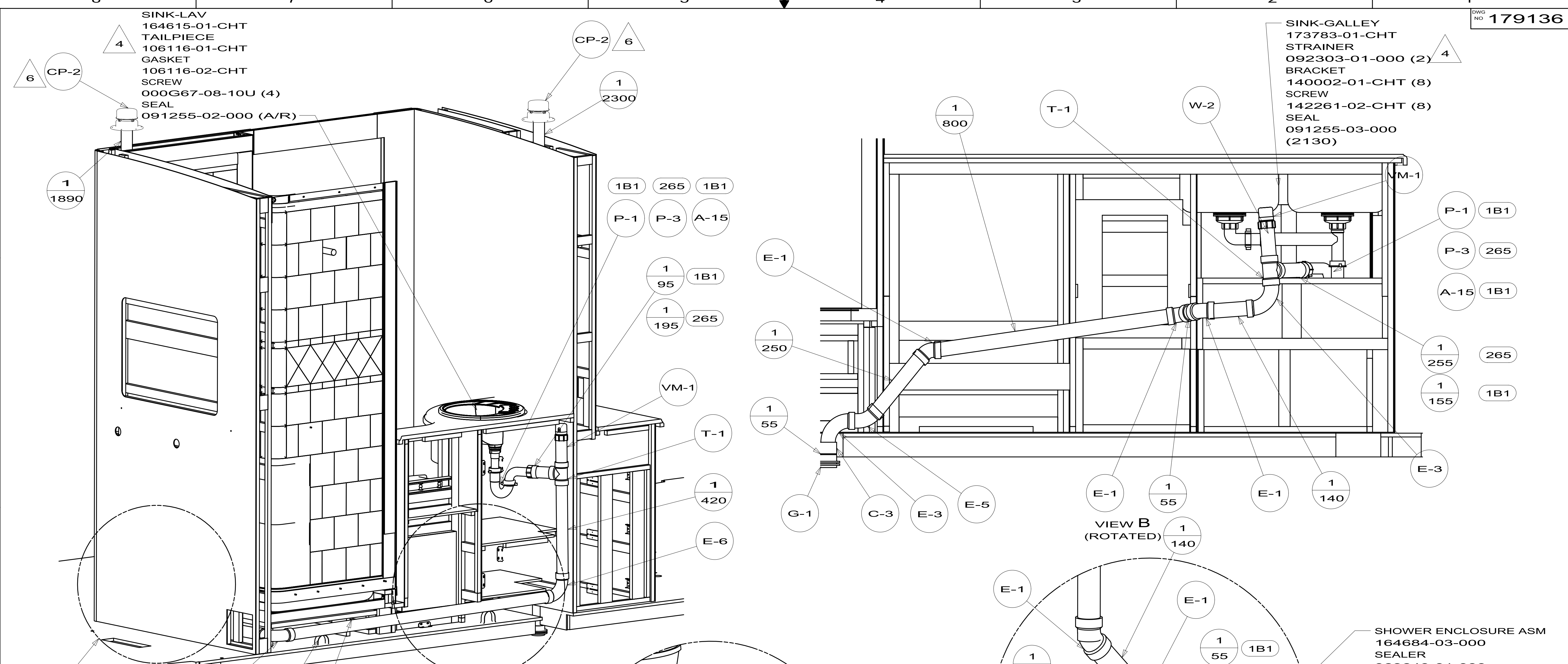
1B1 CODES/STANDARDS-USA
 265 CODES/STDA-CSA/CMVSS

		COPYRIGHT 2011 WINNEBAGO INDUSTRIES, INC.
DTR	ORIG. DATE	
CHKR	ALL DIMENSIONS ARE IN MILLIMETERS	
P.E.		
M.E.	FIRST USED	
DSNR	12 D35J	
UNSPECIFIED TOLERANCES ARE: WHOLE DIM (X) : 3 ONE-PLACE (X.X) : TWO-PLACE (X.XX) : ANGLE :		MATERIAL:
THIRD ANGLE PROJECTION		
DO NOT SCALE DRAWING		REFER TO ES0018 FOR FASTENER TIGHTENING GUIDELINES
TITLE: DRAINAGE SYSTEM INSTL		
SHEET 1 OF 3	PART NO 179136	REV
REF:	1	

FOR DRAINAGE CALLOUTS SEE DWG NO 116229-01-000

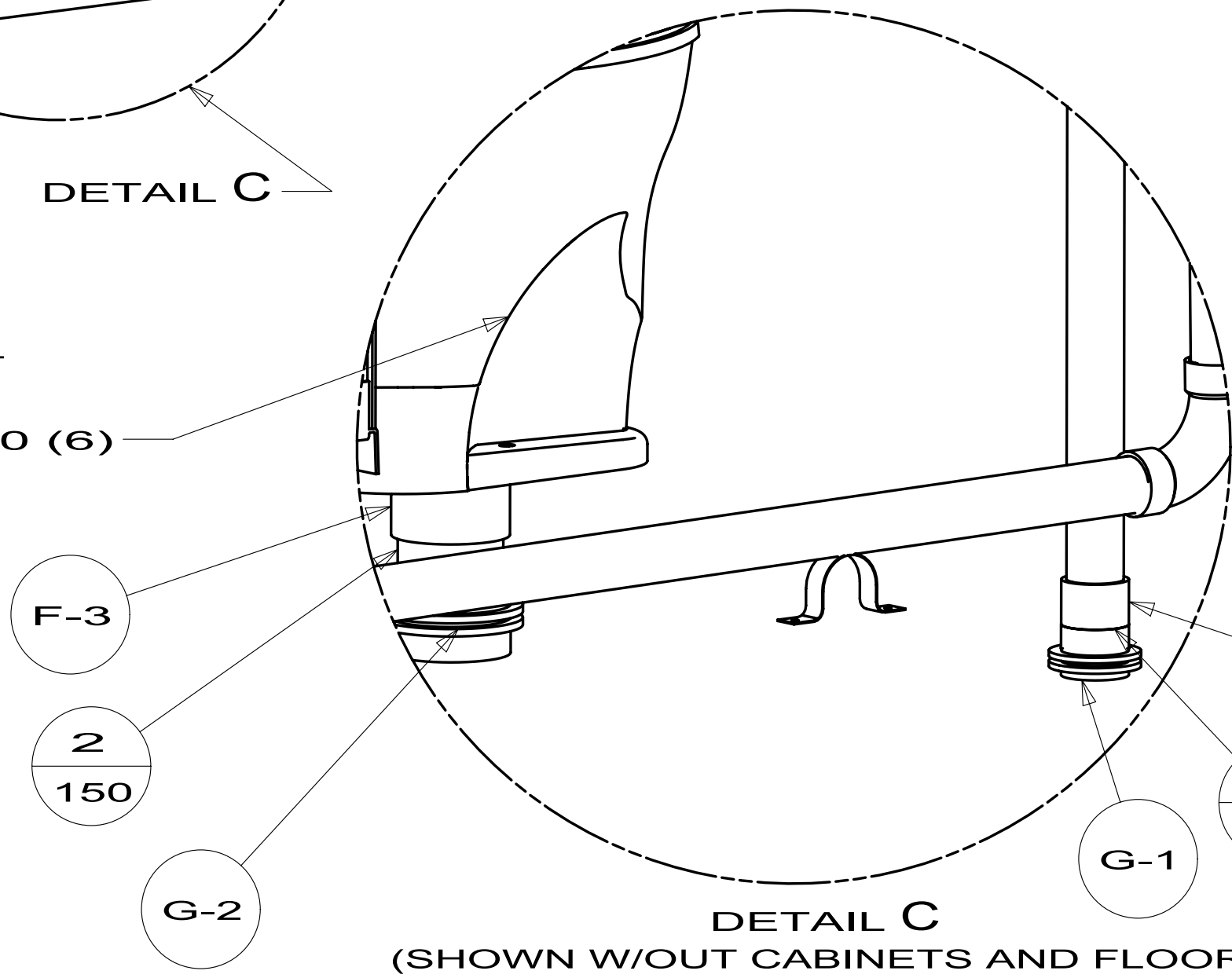
SINK-LAV
 164615-01-CHT
 TAILPIECE
 106116-01-CHT
 GASKET
 106116-02-CHT
 SCREW
 000G67-08-10U (4)
 SEAL
 091255-02-000 (A/R)

SINK-GALLEY
 173783-01-CHT
 STRAINER
 092303-01-000 (2)
 BRACKET
 140002-01-CHT (8)
 SCREW
 142261-02-CHT (8)
 SEAL
 091255-03-000
 (2130)

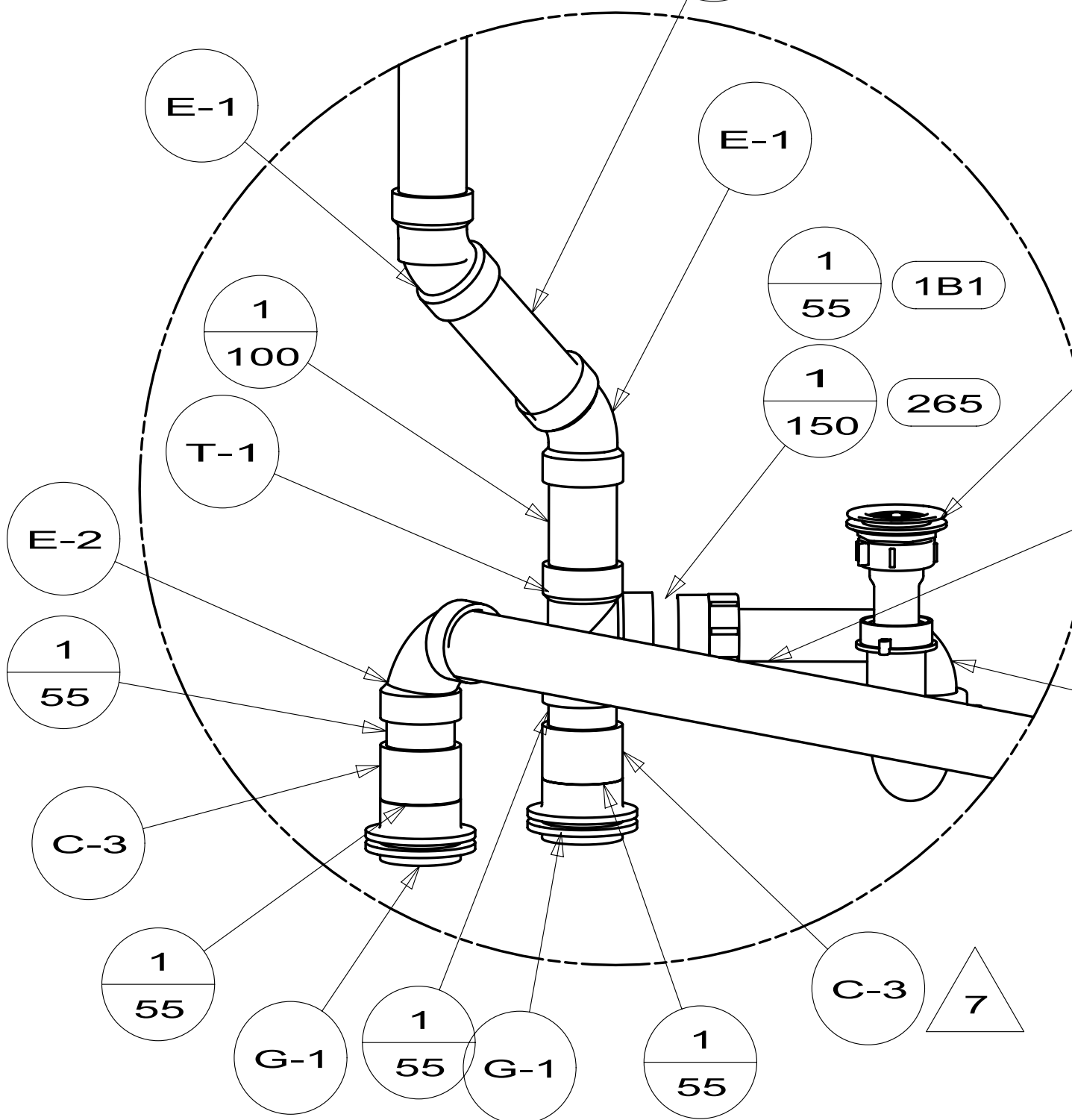


DETAIL D
 STRAP-CONDUIT, 2"
 008406-01-000(2)

VIEW A
 TOILET
 147421-06-CHT
 SCREW
 087721-01-000 (6)

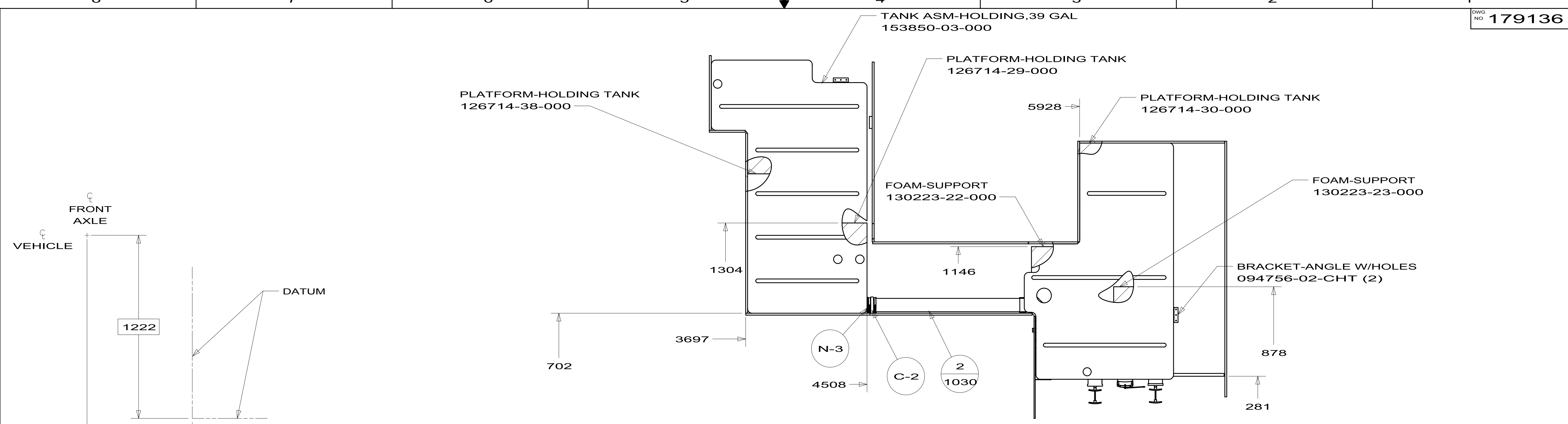


VIEW B
 (ROTATED)

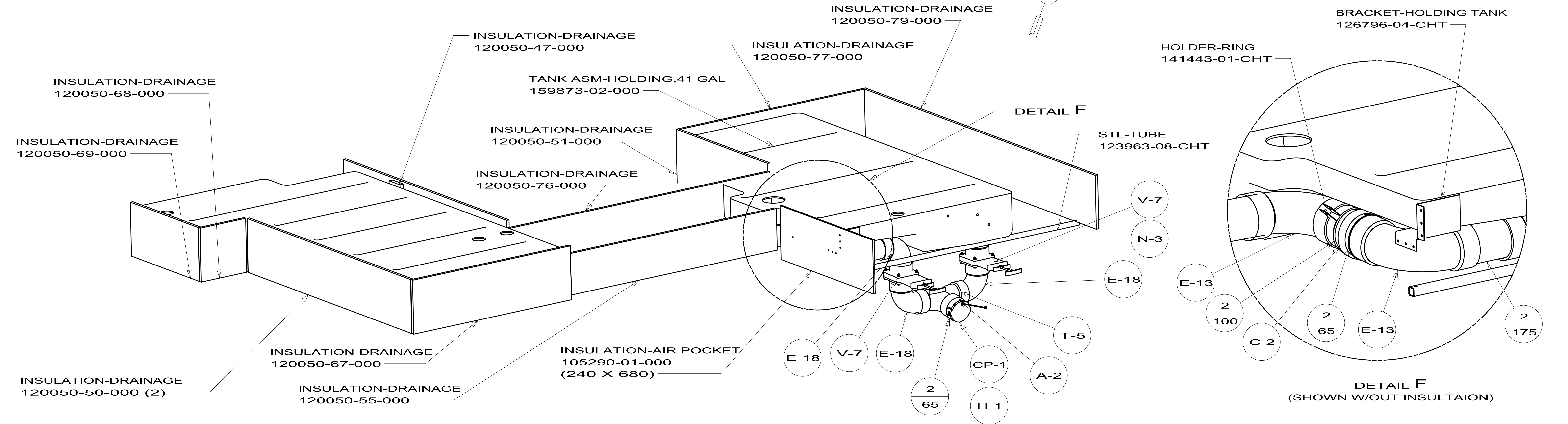


SHOWER ENCLOSURE ASM
 164684-03-000
 SEALER
 069640-01-000
 WASHER-RUBBER
 127440-02-CHT
 TAILPIECE
 011069-02-000
 NUT
 130403-01-000
 STRAINER
 066440-01-000

FIRST USED	12 D35J	
DO NOT SCALE DRAWING		
TITLE: DRAINAGE SYSTEM INSTL		
SHEET 2	PART NO 179136	REV

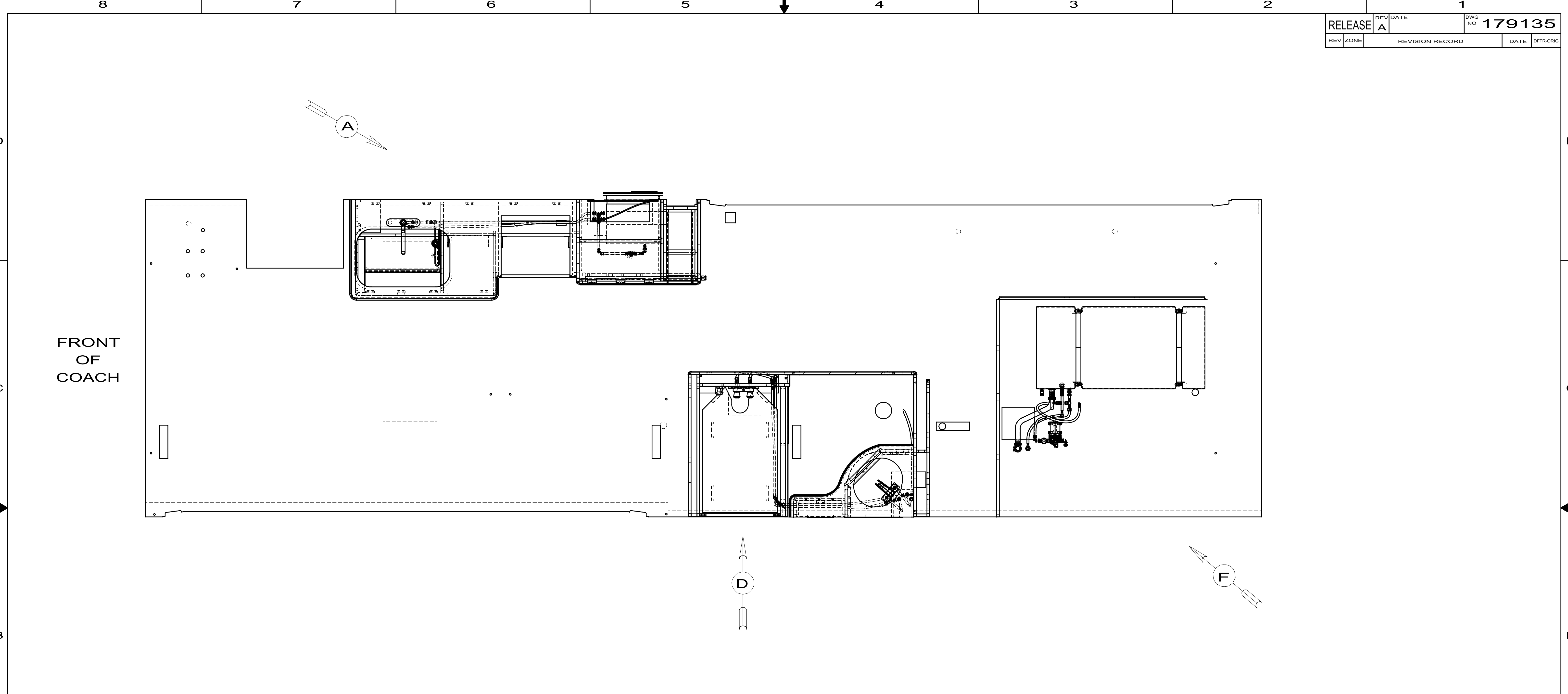


SHOWING TANKS AND DRAINS



VIEW E

FIRST USED	12 D35J	
TITLE:	DO NOT SCALE DRAWING	
TITLE:	DRAINAGE SYSTEM INSTL	
SHEET 3	PART NO 179136	REV



FRONT
OF
COACH

- 144 REFRIGERATOR-DOUBLE DOOR
- 145 REFR-EXTRA CAP W/ICEMAKER

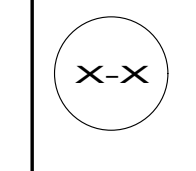
- 9 ADD TEFLON TAPE 10405-03-000.
- 8 LABEL HOT AND COLD SUPPLY TUBES.
- 7 TAPE FITTING TO TUBE BEFORE CABINET SET TO PREVENT FITTING FROM MOVING.
- 6 ADD TEFLON TAPE 10405-01-000.
- 5 ADD TEFLON TAPE 10405-02-000.
- 4 ADD PIPE WRAP (LADDER SCRAP) INSULATION HERE.

3. ALL TUBING TO BE SECURED AT 1200 INTERVALS MAXIMUM WITH CLAMP 10495-01-000 AND SCREW G67-10-12B OR EQUIVALENT.
2. TUBING TO BE INSTALLED WITH SUFFICIENT SLOPE TO PROVIDE DRAINAGE TO NEAREST VALVE.
1. PLASTIC FITTINGS TO BE SEALED WITH SEALANT 84456-01-000.

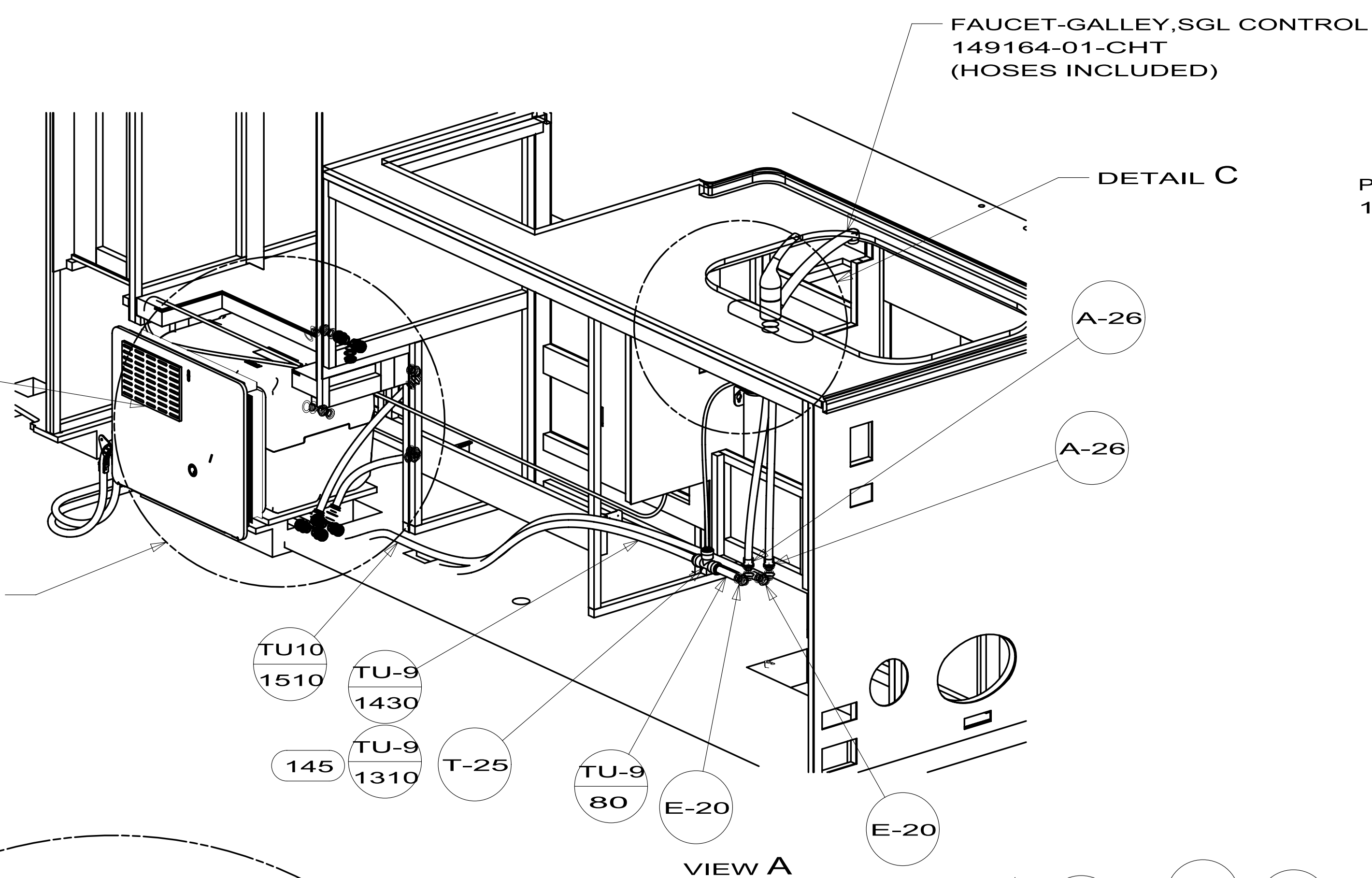
NOTES:

		COPYRIGHT 2011 WINNEBAGO INDUSTRIES, INC.
DTR	ORIG. DATE	ALL DIMENSIONS ARE IN MILLIMETERS
CHKR		
P.E.		
M.E.	FIRST USED	
DSNR		12 D35J
UNSPECIFIED TOLERANCES ARE: WHOLE DIM (X) : 3 ONE-PLACE (X.X) : TWO-PLACE (X.XX) : ANGLE :		MATERIAL: REFER TO ES0018 FOR FASTENER TIGHTENING GUIDELINES
THIRD ANGLE PROJECTION		
DO NOT SCALE DRAWING		TITLE:
		WATER SYSTEM INSTL
SHEET 1 OF 4	PART NO	179135
REF:		1

FOR
WATER
CALLOUTS
SEE DWG NO
116230-01-000

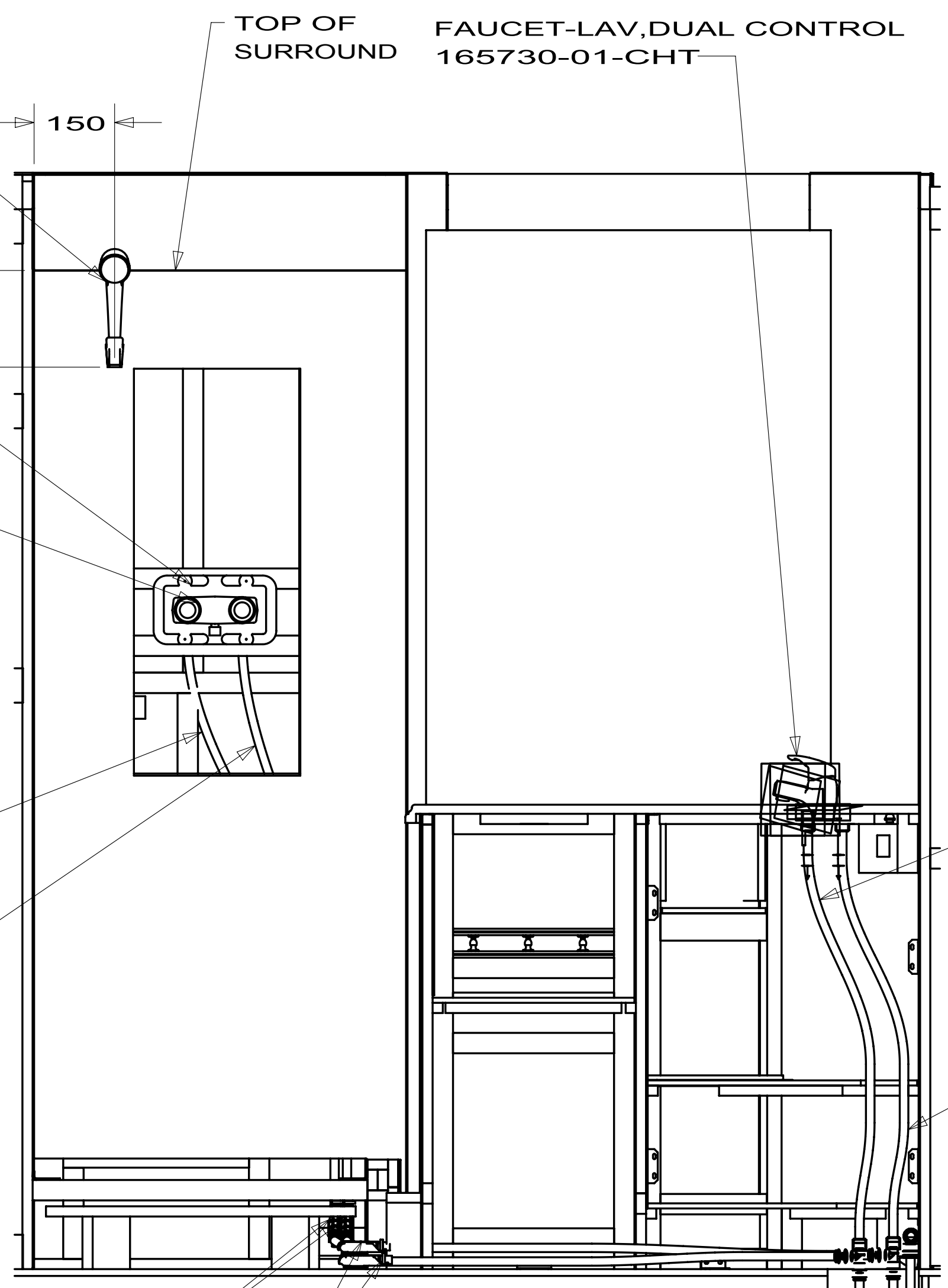


- WATER HEATER
145541-02-000
- DOOR
125420-06-CHT
- PLYWOOD
173882-4M-0CA
- SCREW
000G55-08-266B (2)
- AL EXTR
002726-51-018
- 002726-51-017 (2)
- SCREW
000G39-10-169 (18)
- CABLE
076767-03-000
- SCREW
000G11-06-08B (2)
- SEALANT

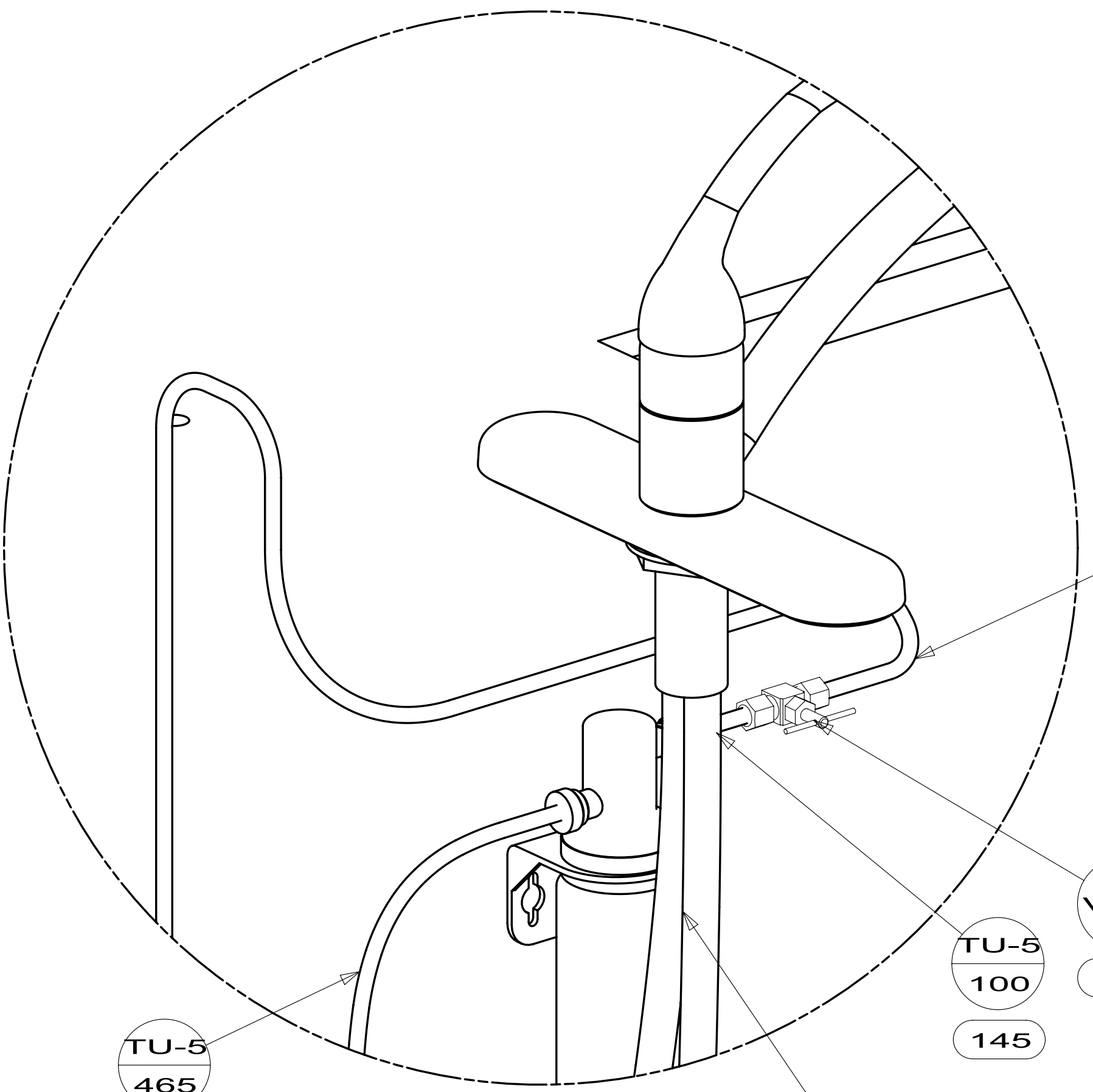


VIEW A

PANEL-SHOWER
167738-02-CHT

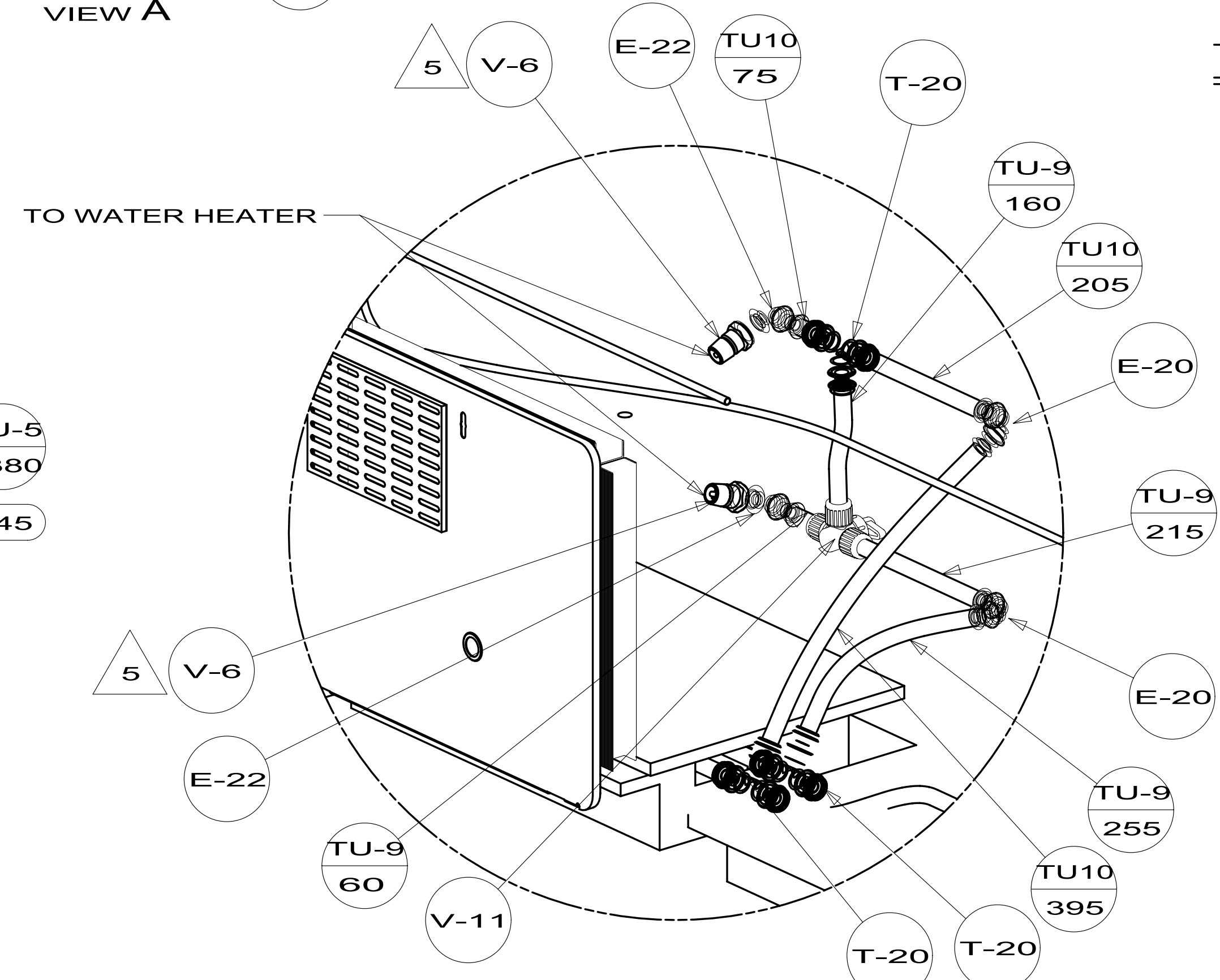


VIEW D



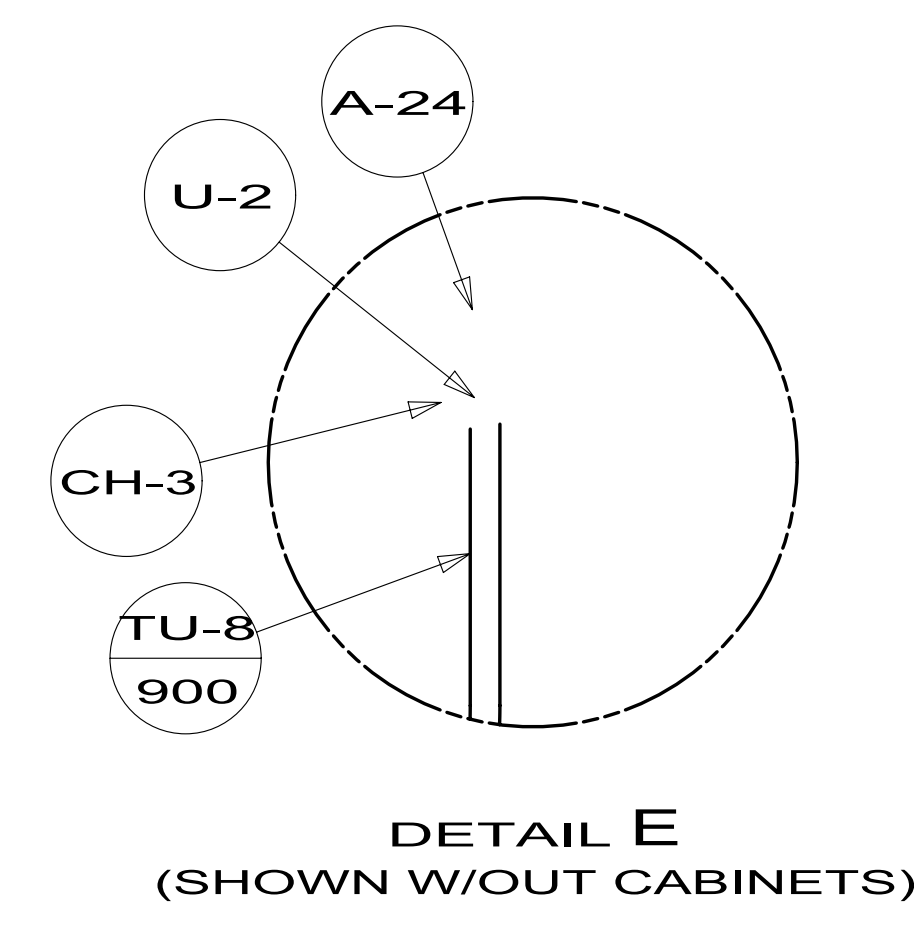
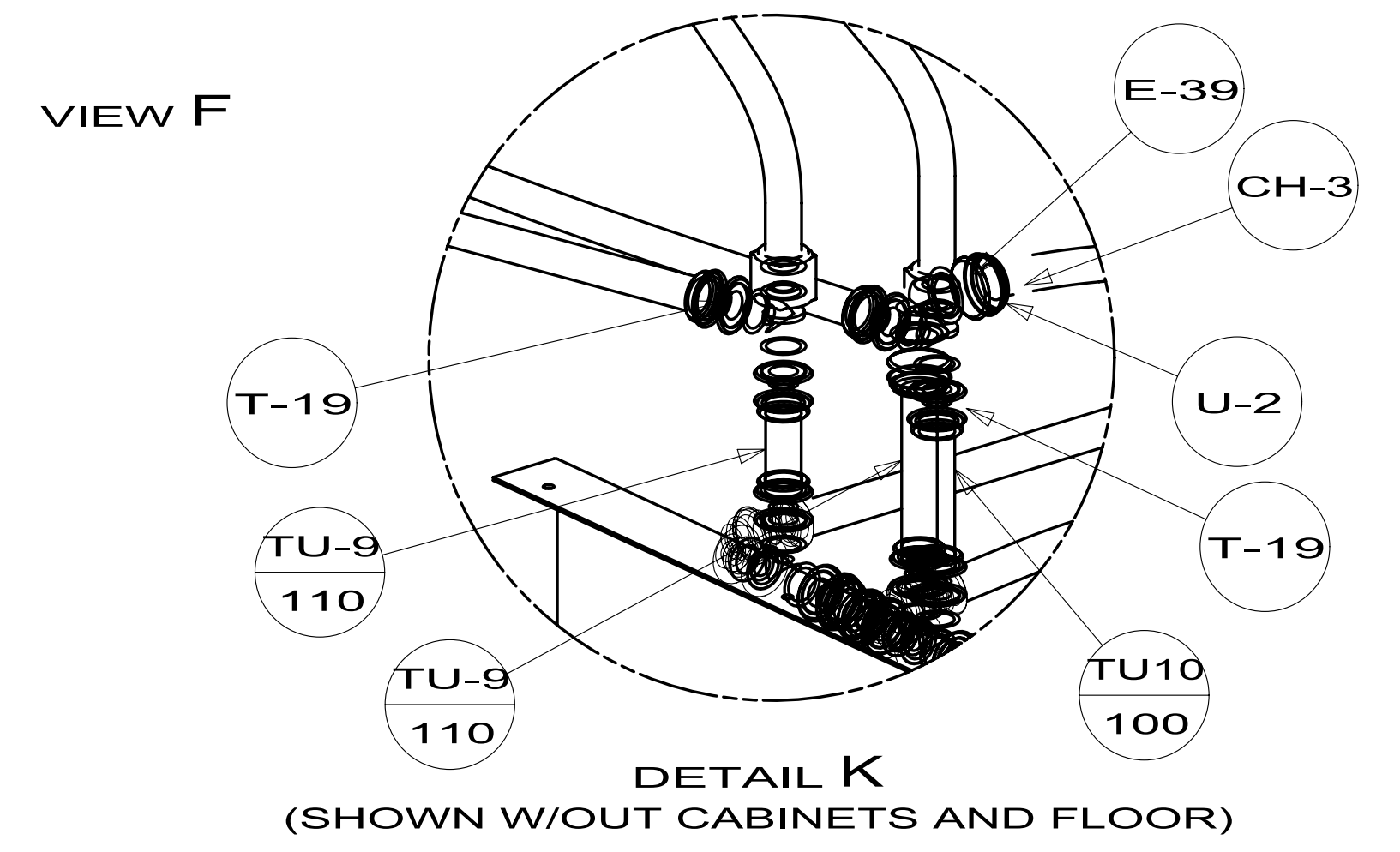
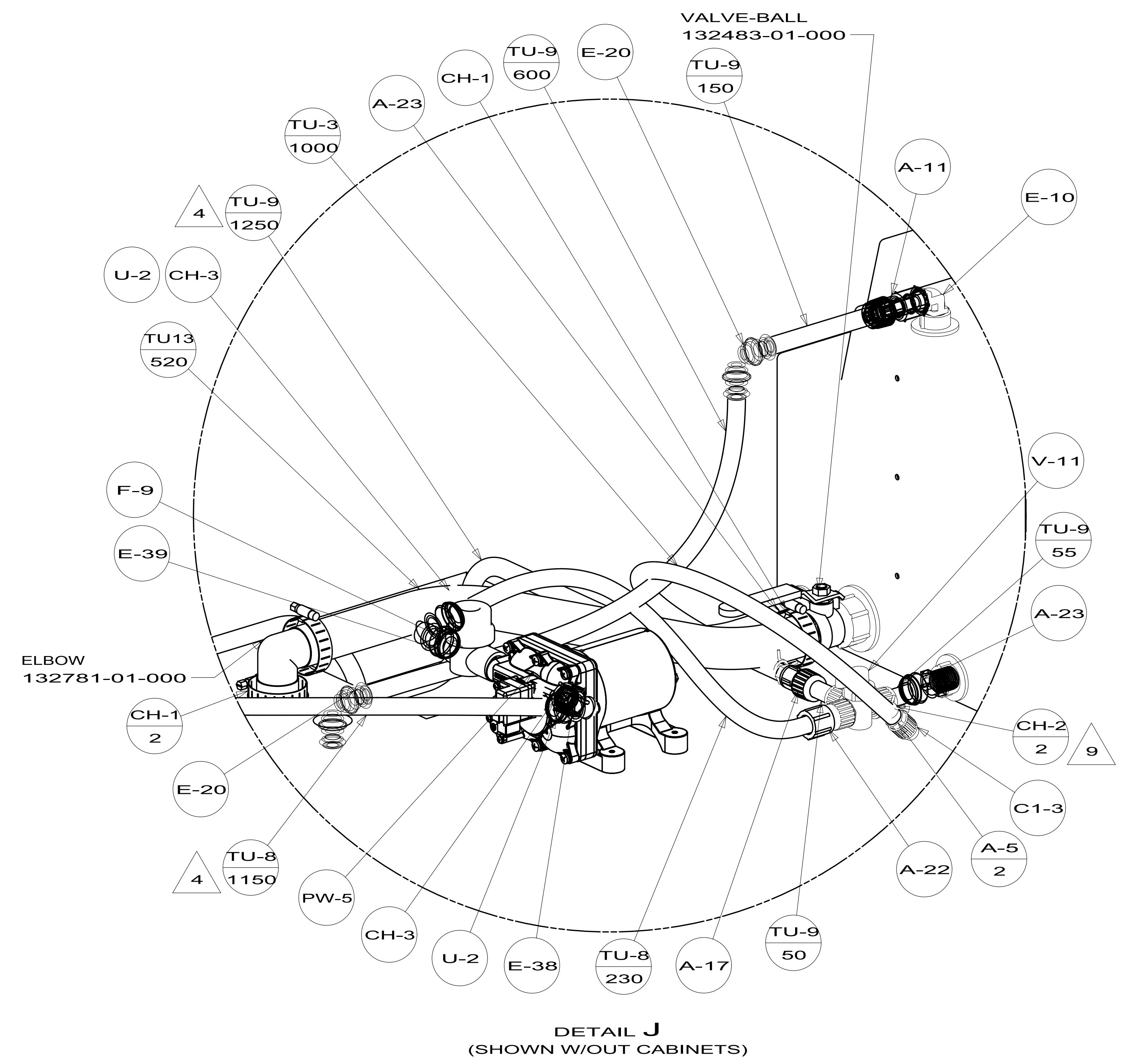
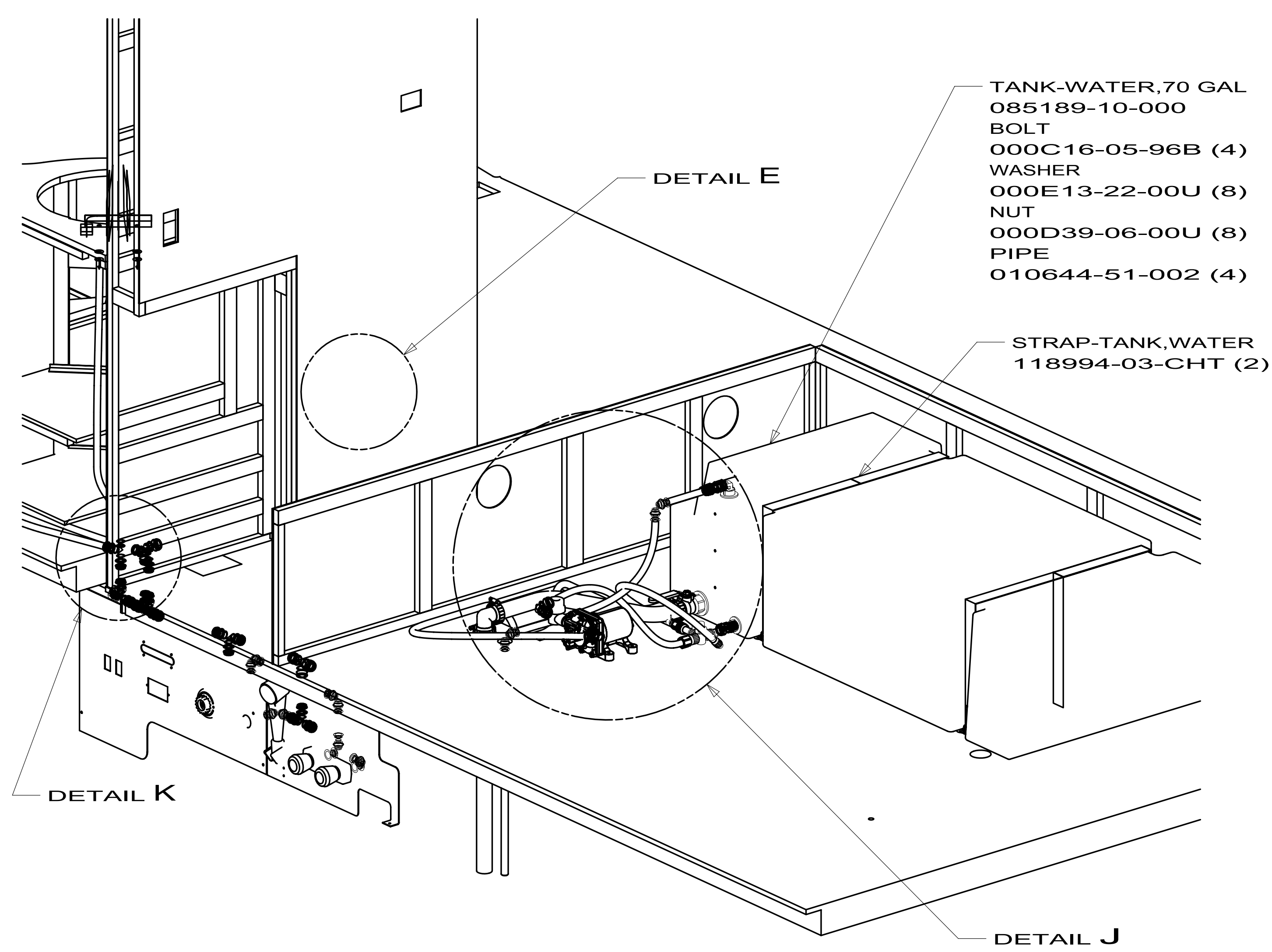
DETAIL C
(SHOWN W/OUT CABINETS)

FILTER KIT
160946-01-000 145
SCREW
000G67-10-12U (2) 145

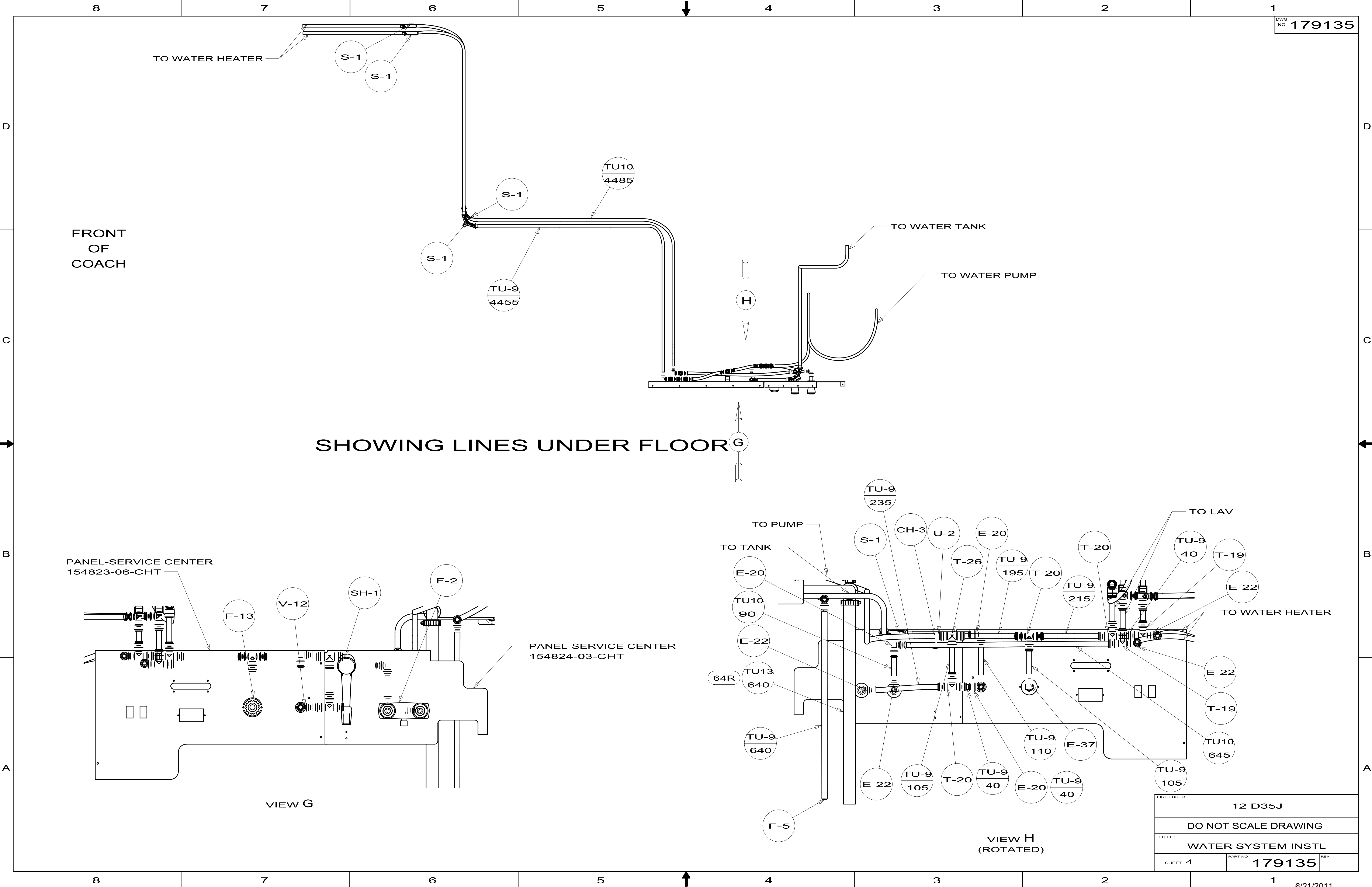


DETAIL B
(SHOWN W/OUT CABINETS AND WATER HEATER)

FIRST USED	12 D35J	
DO NOT SCALE DRAWING		
TITLE:	WATER SYSTEM INSTL	
SHEET 2	PART NO. 179135	REV



FIRST USED	12 D35J	
TITLE:	DO NOT SCALE DRAWING	
SHEET 3	PART NO	179135
	REV	1



FIRST USED	12 D35J	
TITLE:	DO NOT SCALE DRAWING	
SHEET 4	PART NO	179135
	REV	