

FRONT OF COACH

- 1B1 CODES/STANDARDS-USA
- 265 CODES/STANDARDS-CSA/CMVSS

- 10 USE SMOOTH PLUMBERS PUTTY 167459-01-000 TO SEAL STRAINER (0.2 PER STRAINER).
- 9 APPLY PRIMER 126427-02-000 AND CEMENT 126427-01-000 BETWEEN ELBOW AND FLEX PIPE.
- 8. SECURE DRAINAGE PIPES TO CABINET USING WIRE TIE 108046-02-000, AND SCREW 000G67-10-12B AT INTERVALS OF NOT MORE THAN 4 FEET APART.
- 7 SECURE VENT PIPE TO FLOOR WITH CLAMP 062401-02-000 (2), SCREW G67-10-12B (2), BRACKET 136878-01-CHT (2).
- 6 VENT PIPE MUST PROJECT 51 MIN AND 64 MAX ABOVE ROOF FOR PROPER FIT AND FUNCTION.
- 5. SEAL AROUND SHOWER WITH SILICONE.
- 4. ATTACH TANK BRACKET TO RISER.
- 3. ALL PIPE AND FITTINGS TO BE ASSEMBLED WITH SOLVENT 004020-01-000 (USA), 004020-02-000 (CAN)
- 2. SLOPE OF TRAP ARM MUST BE 6 PER 305 mm.
- 1. SLOPE OF HORIZONTAL PIPING TO BE MINIMUM OF 3 PER 305 mm.

NOTES:

		COPYRIGHT 2011 WINNEBAGO INDUSTRIES, INC.
DTR	ORIG. DATE	ALL DIMENSIONS ARE IN MILLIMETERS
CHKR		
P.E.		
M.E.	FIRST USED	
DSNR		12 D33C
UNSPECIFIED TOLERANCES ARE: WHOLE DIM (X) : 3 ONE-PLACE (X.X) : 1.5 TWO-PLACE (X.XX) : 0.50 ANGLE : 1°		MATERIAL: REFER TO ES0018 FOR FASTENER TIGHTENING GUIDELINES
THIRD ANGLE PROJECTION		
DO NOT SCALE DRAWING		TITLE:
		DRAINAGE SYSTEM INSTL
SHEET 1 OF 4	PART NO	178994
REF:		1

FOR DRAINAGE CALLOUTS SEE DWG NO 116229-01-000

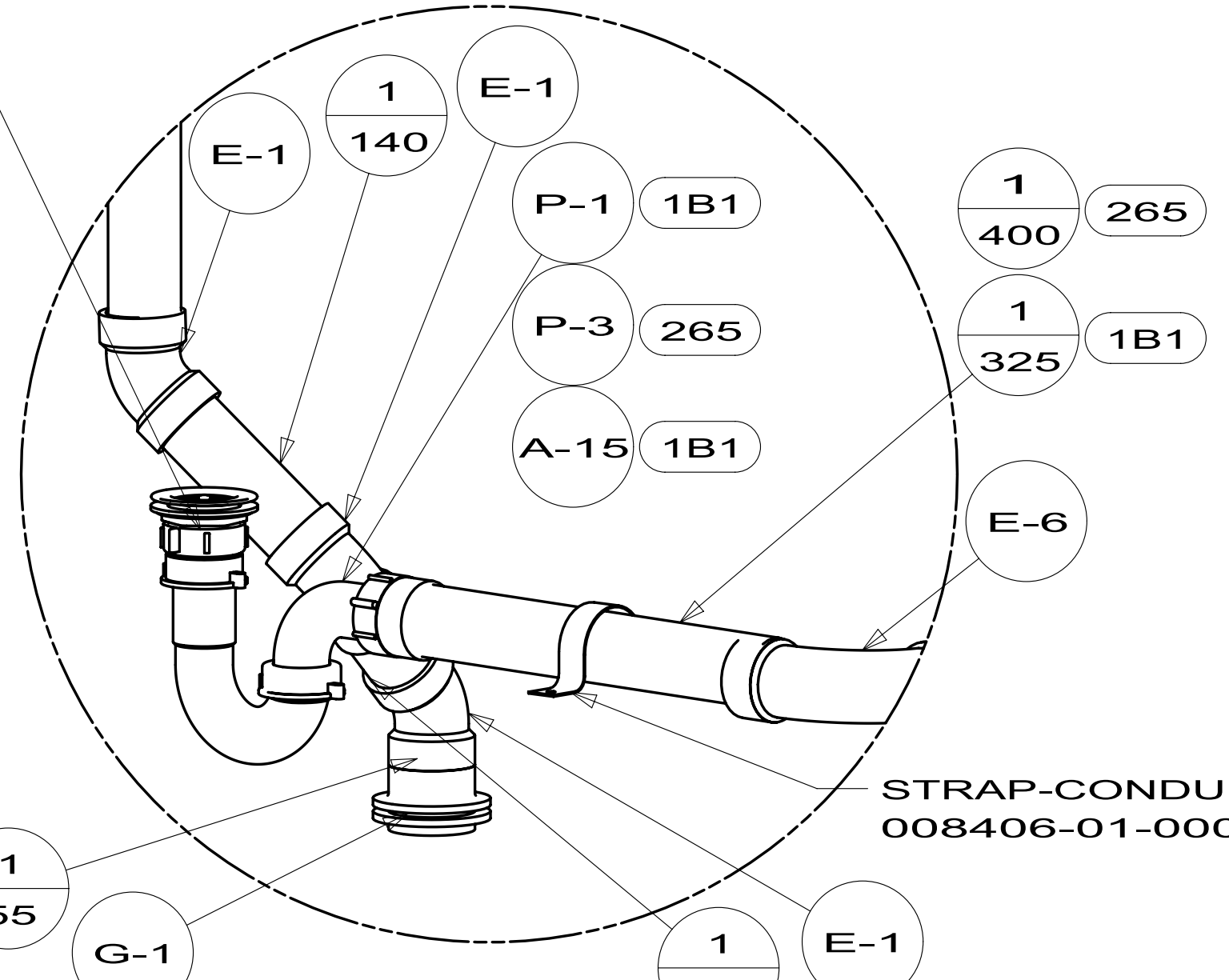
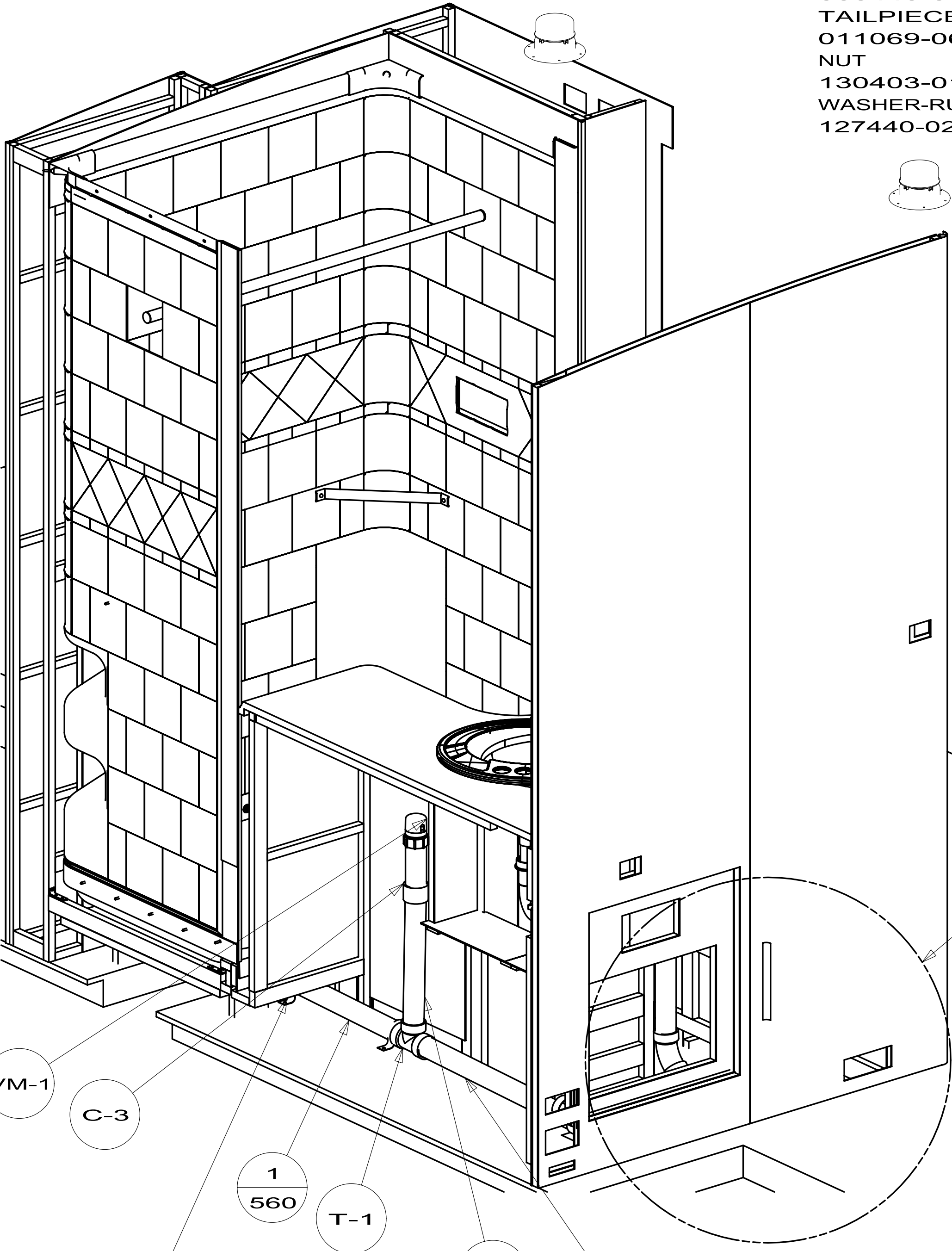
SHOWER INSTL
 164684-03-000
 STRAINER
 066440-01-000
 TAILPIECE
 011069-06-000
 NUT
 130403-01-000
 WASHER-RUBBER
 127440-02-CHT

SINK-LAV
 164615-01-CHT
 SCREW
 000G37-08-10U (6)
 SEAL
 (A/R)
 STRAINER ASM
 106116-01-CHT
 GASKET
 106116-02-CHT

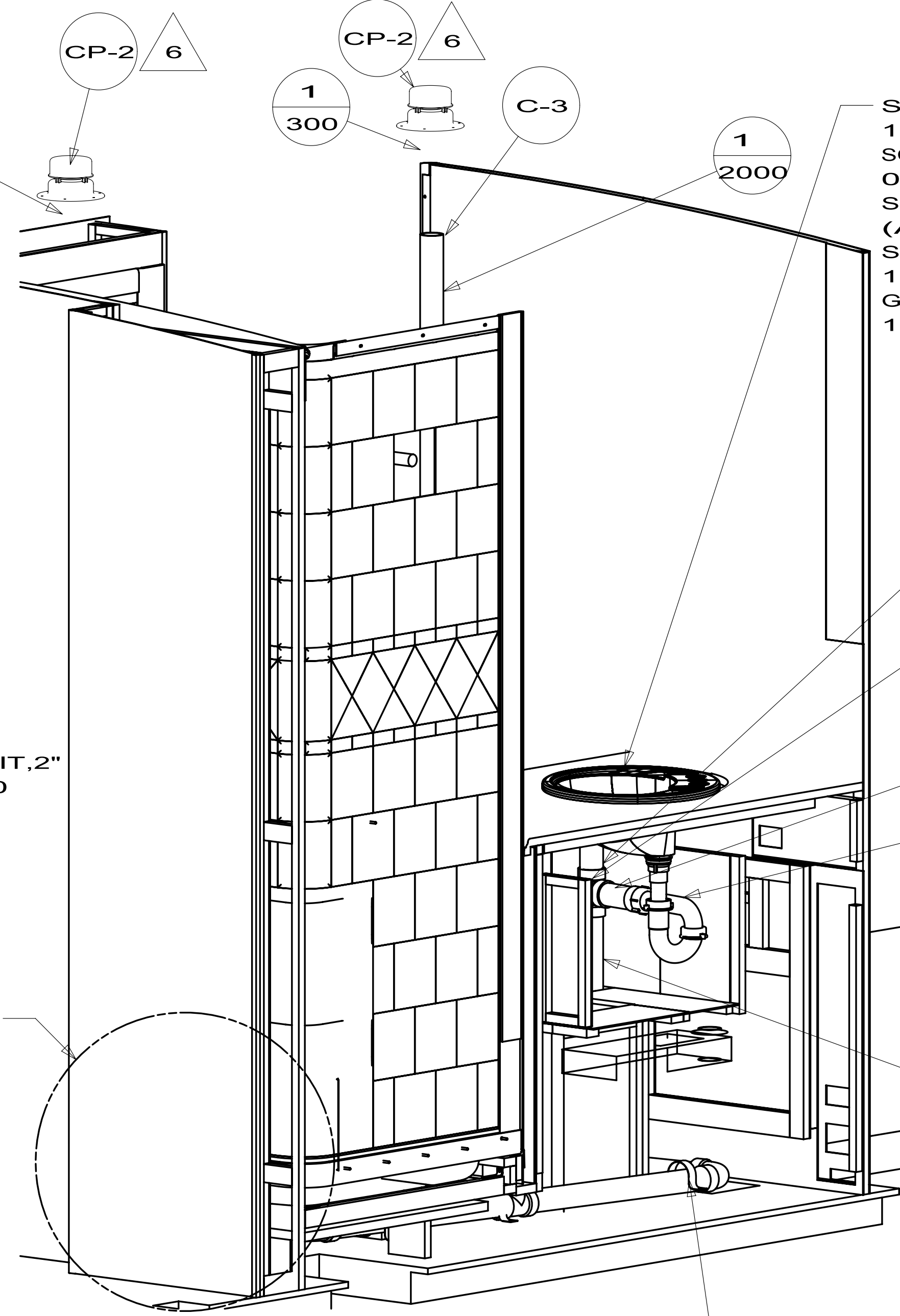
1 1710 C-3 1 300

1 300 CP-2 6 C-3

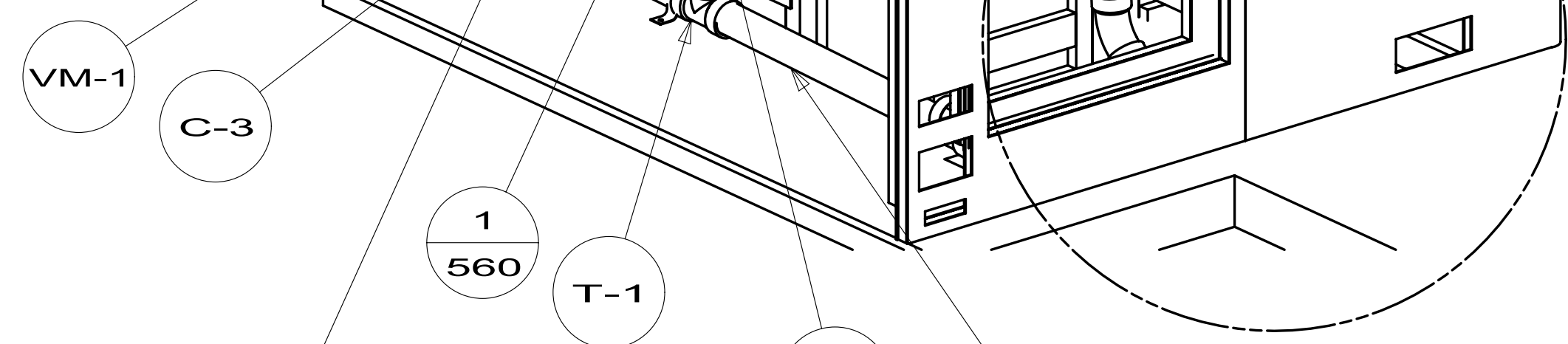
1 2000



DETAIL D
 (SHOWN W/OUT SHOWER, CABINETS, AND FLOOR)

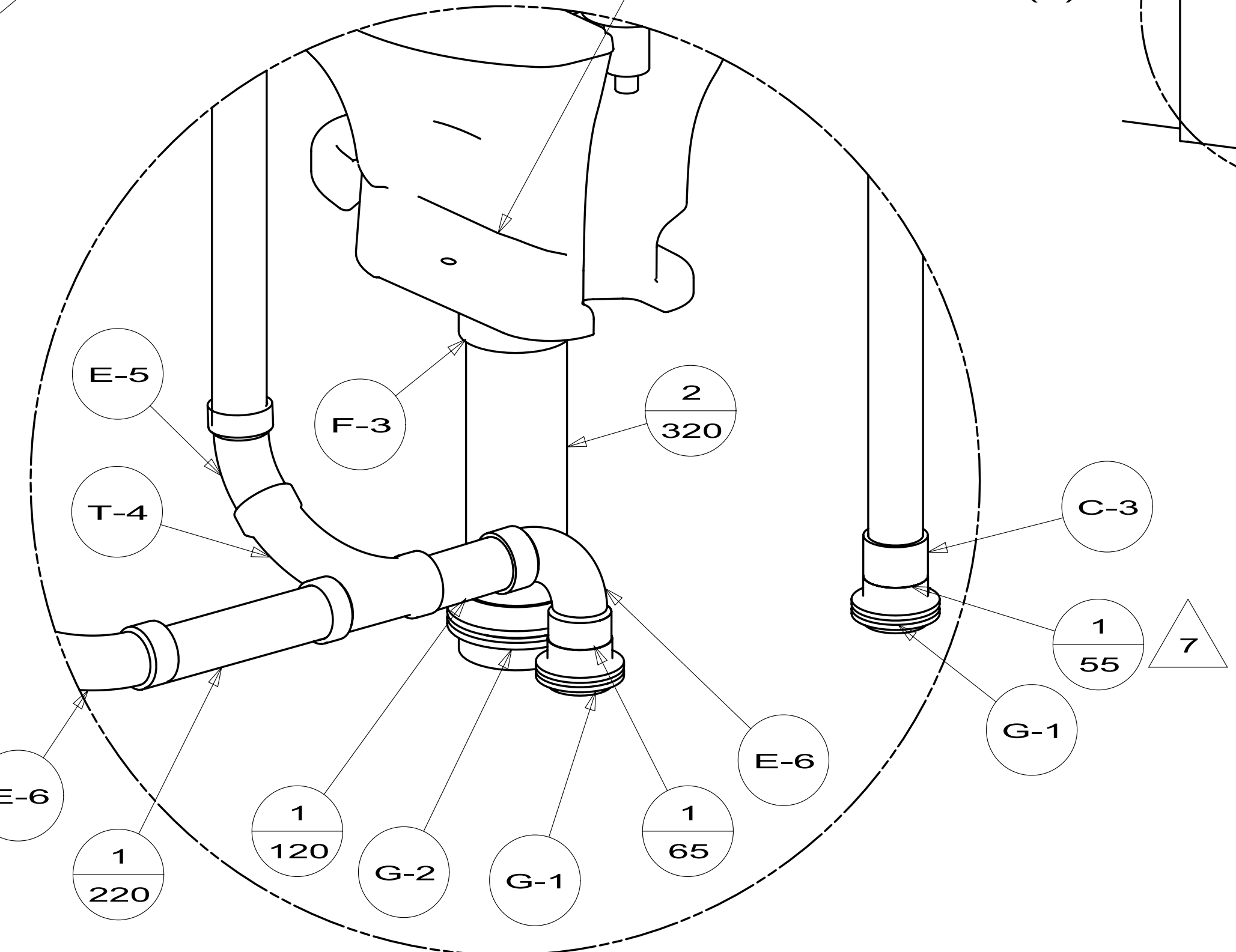


VIEW C

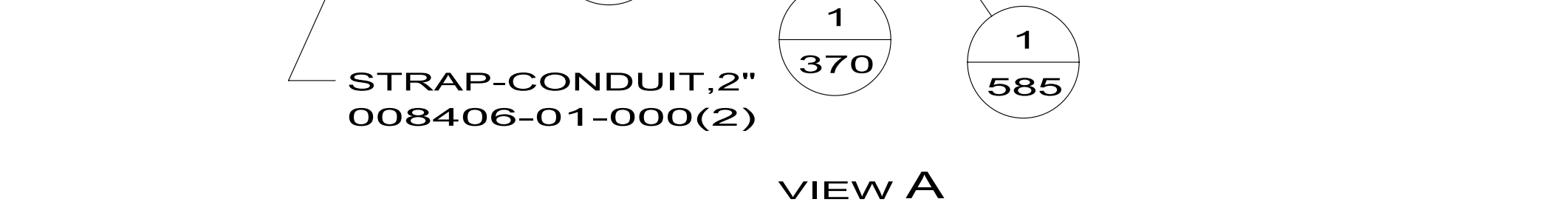


DETAIL B

TOILET
 147421-03-CHT
 SCREW
 087721-01-000 (8)

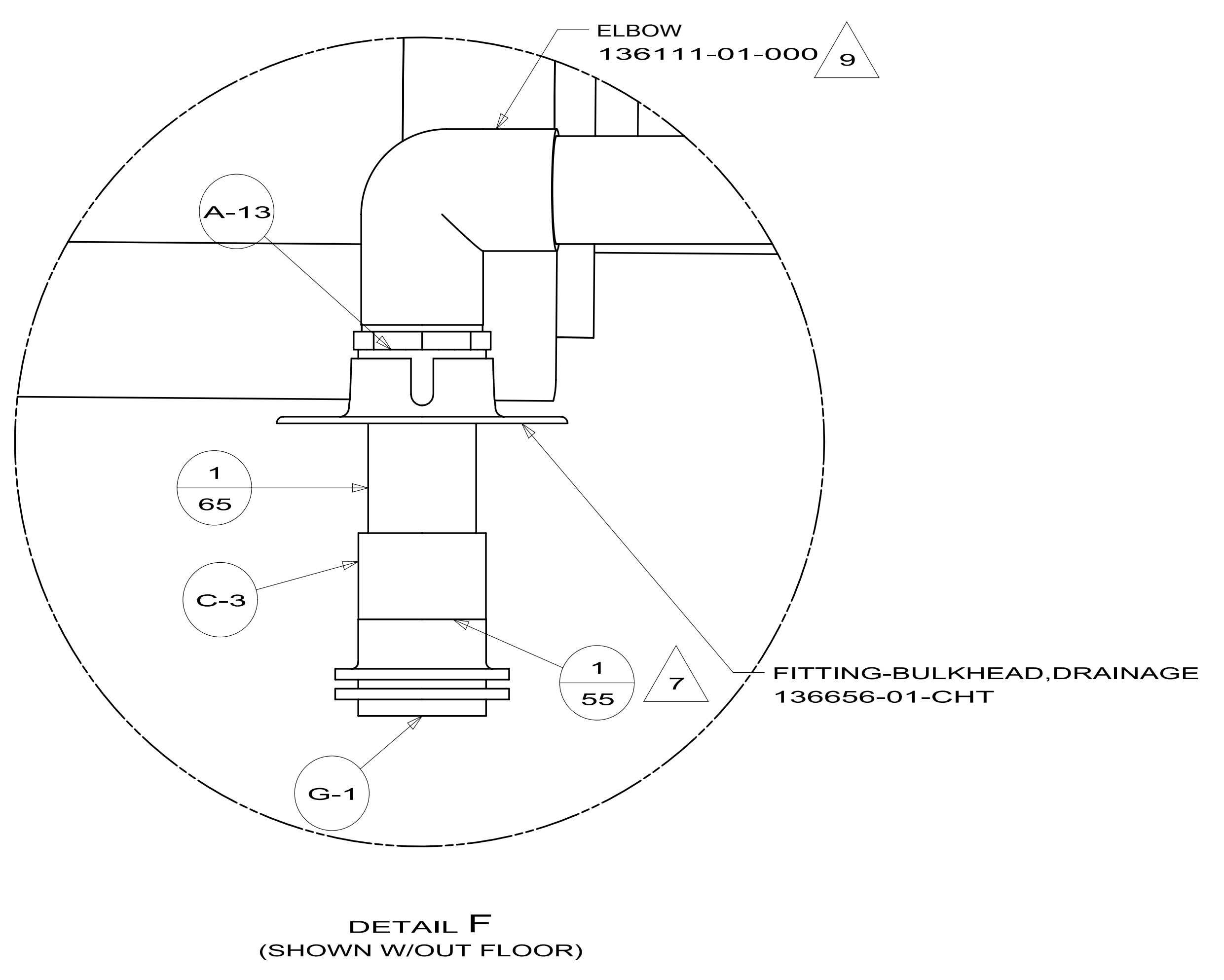
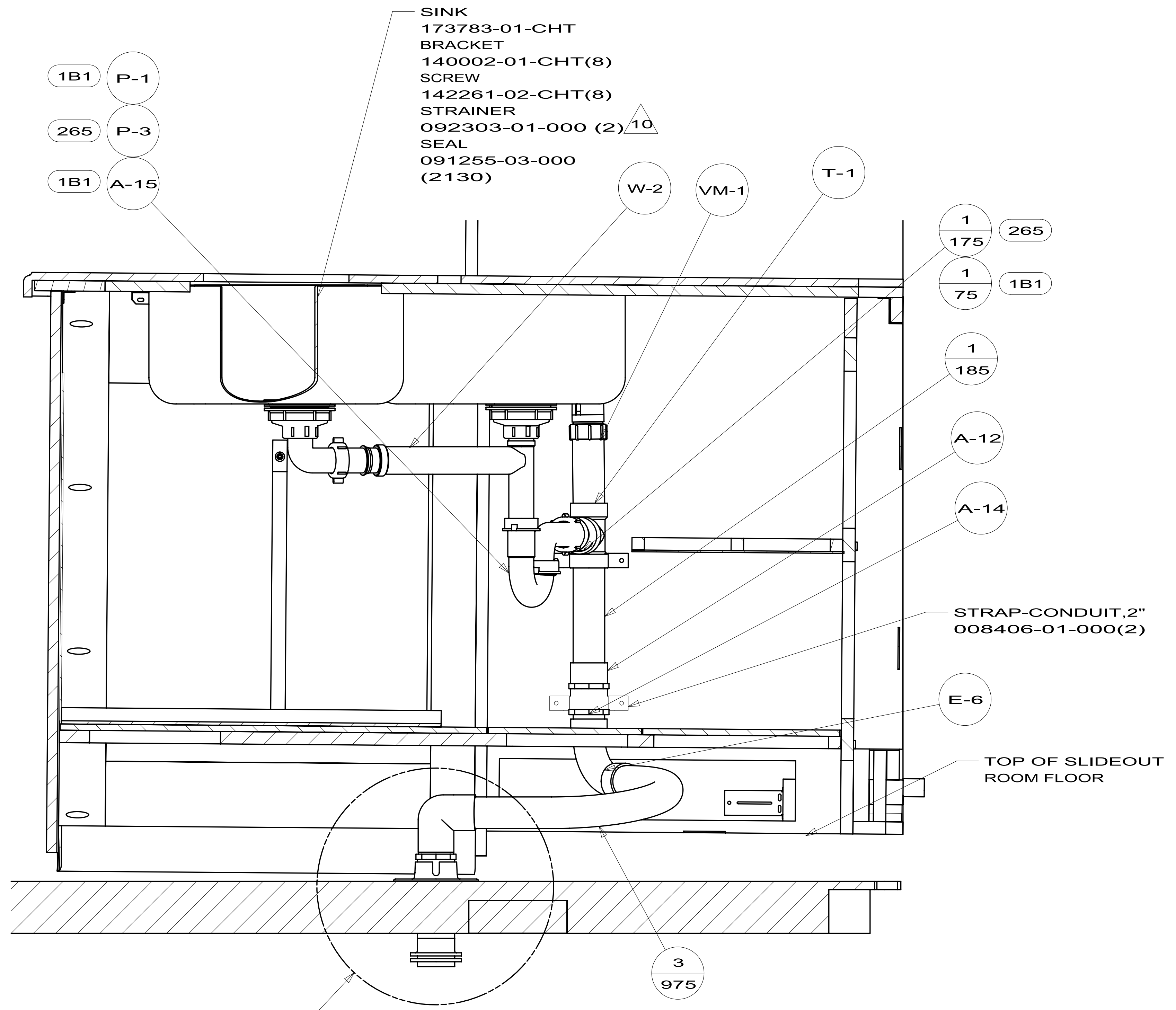


DETAIL B
 (SHOWN W/OUT FLOOR AND CABINETS)



VIEW A

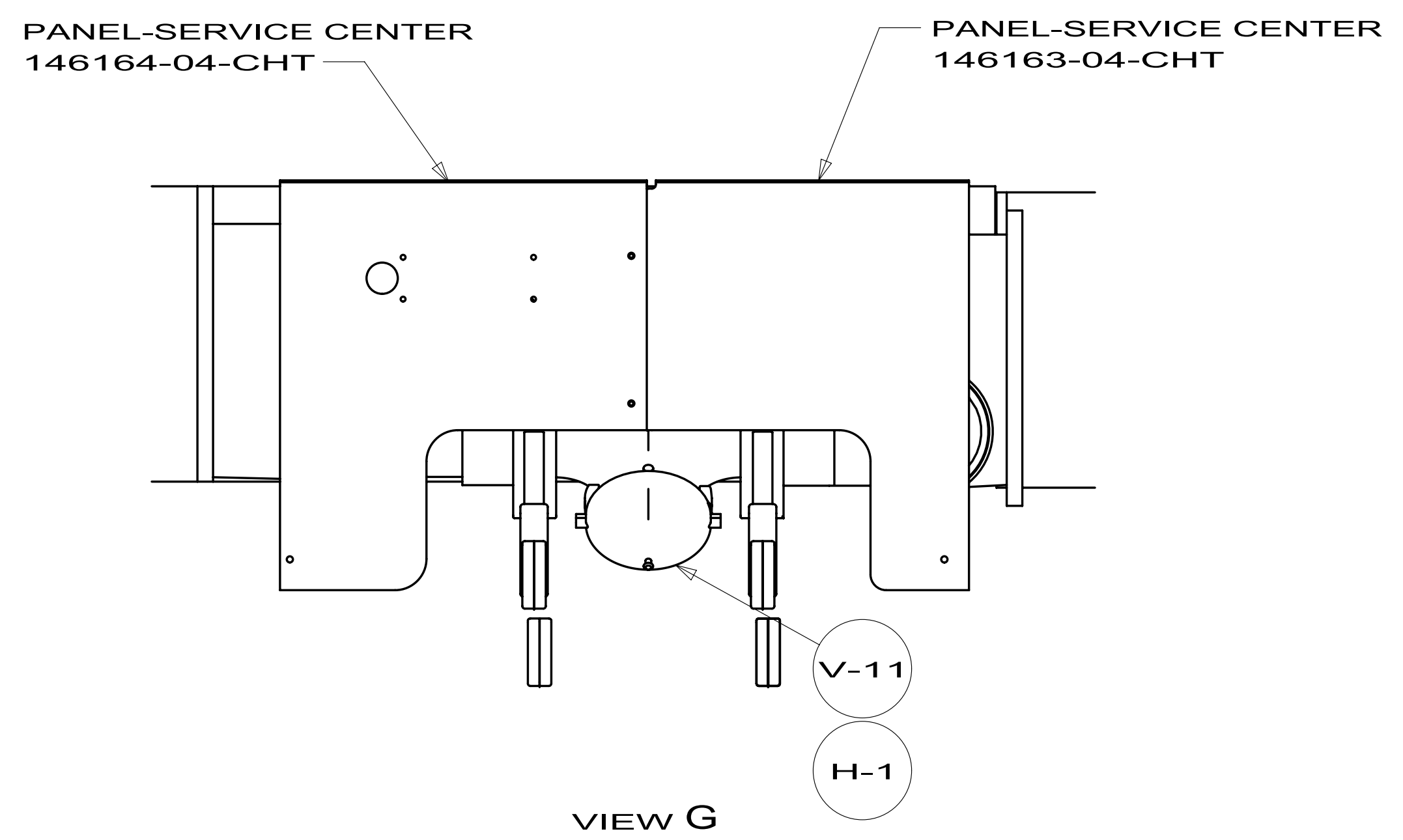
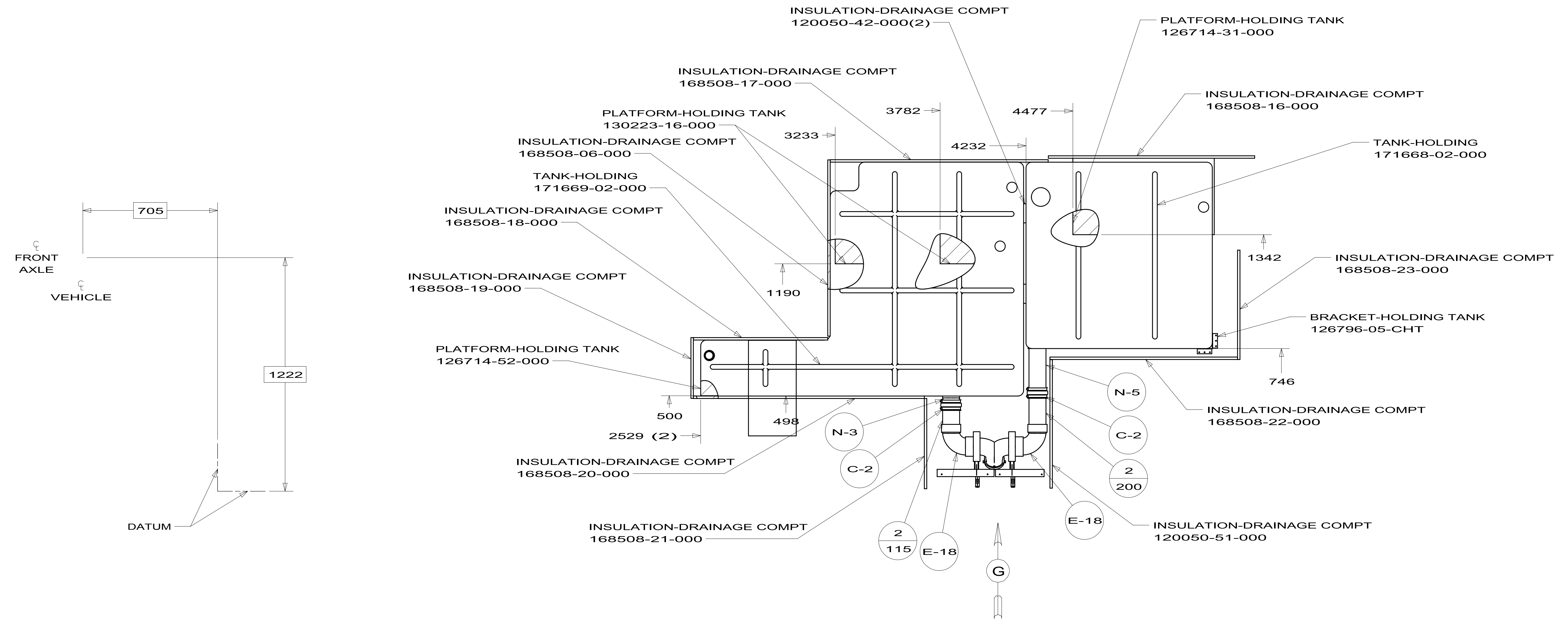
FIRST USED	12 D33C	
TITLE:	DO NOT SCALE DRAWING	
	DRAINAGE SYSTEM INSTL	
SHEET 2	PART NO	178994
	REV	



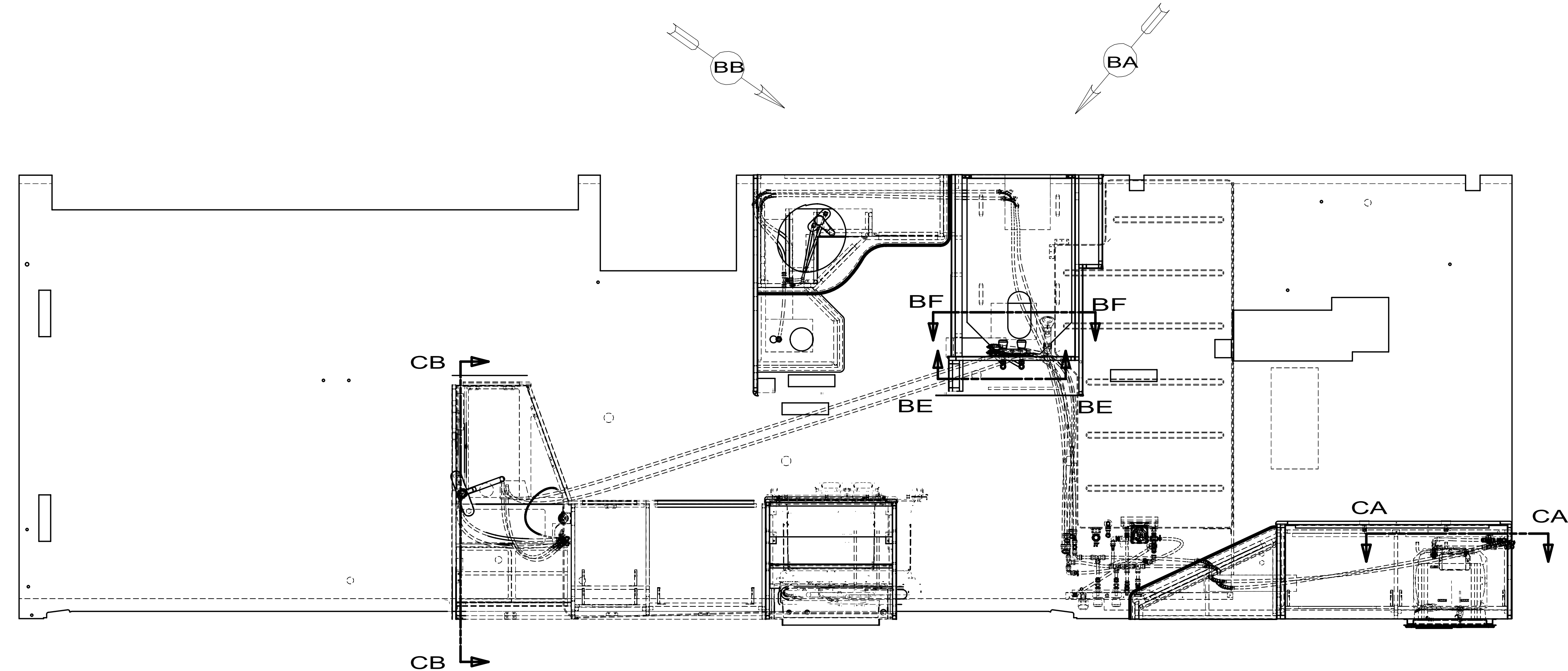
SECTION E-E (ROTATED)

DETAIL F (SHOWN W/OUT FLOOR)

FIRST USED	12 D33C		
DO NOT SCALE DRAWING			
TITLE: DRAINAGE SYSTEM INSTL			
SHEET 3	PART NO	178994	REV



FIRST USED	12 D33C	
TITLE:	DO NOT SCALE DRAWING	
TITLE:	DRAINAGE SYSTEM INSTL	
SHEET 4	PART NO 178994	REV

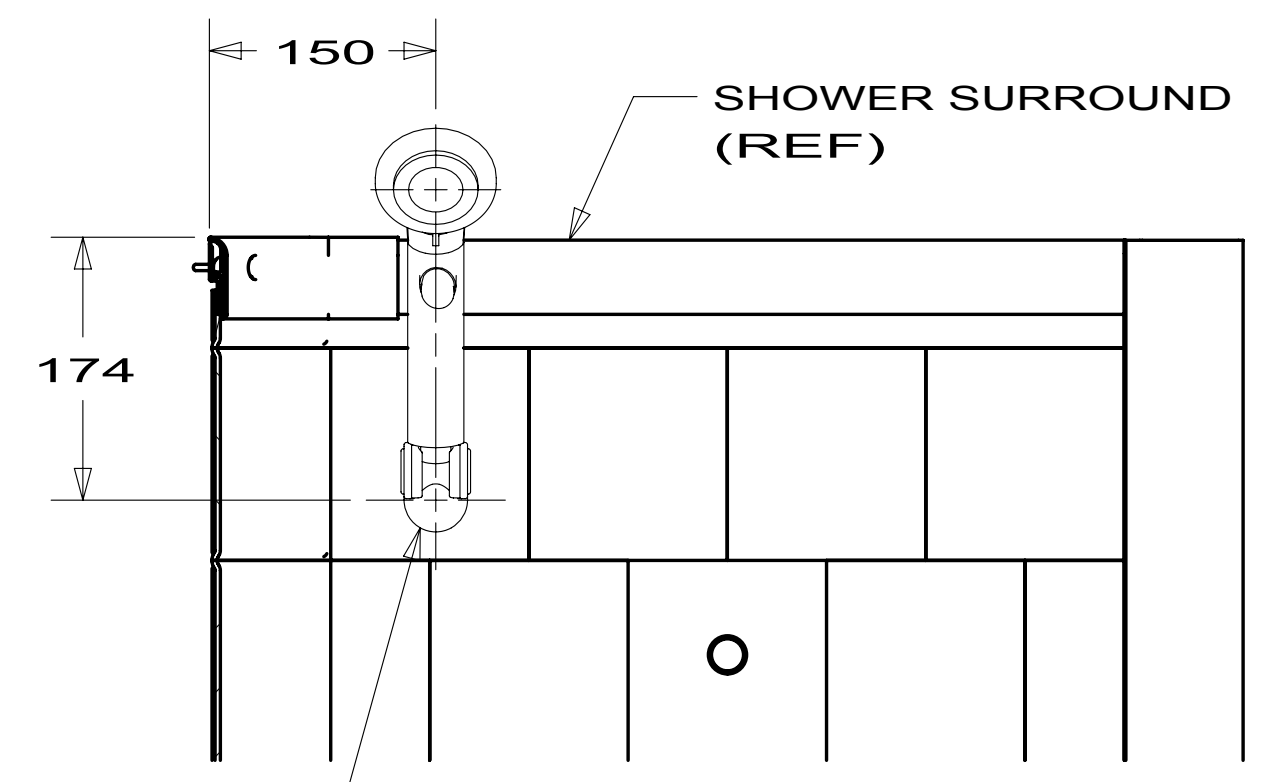
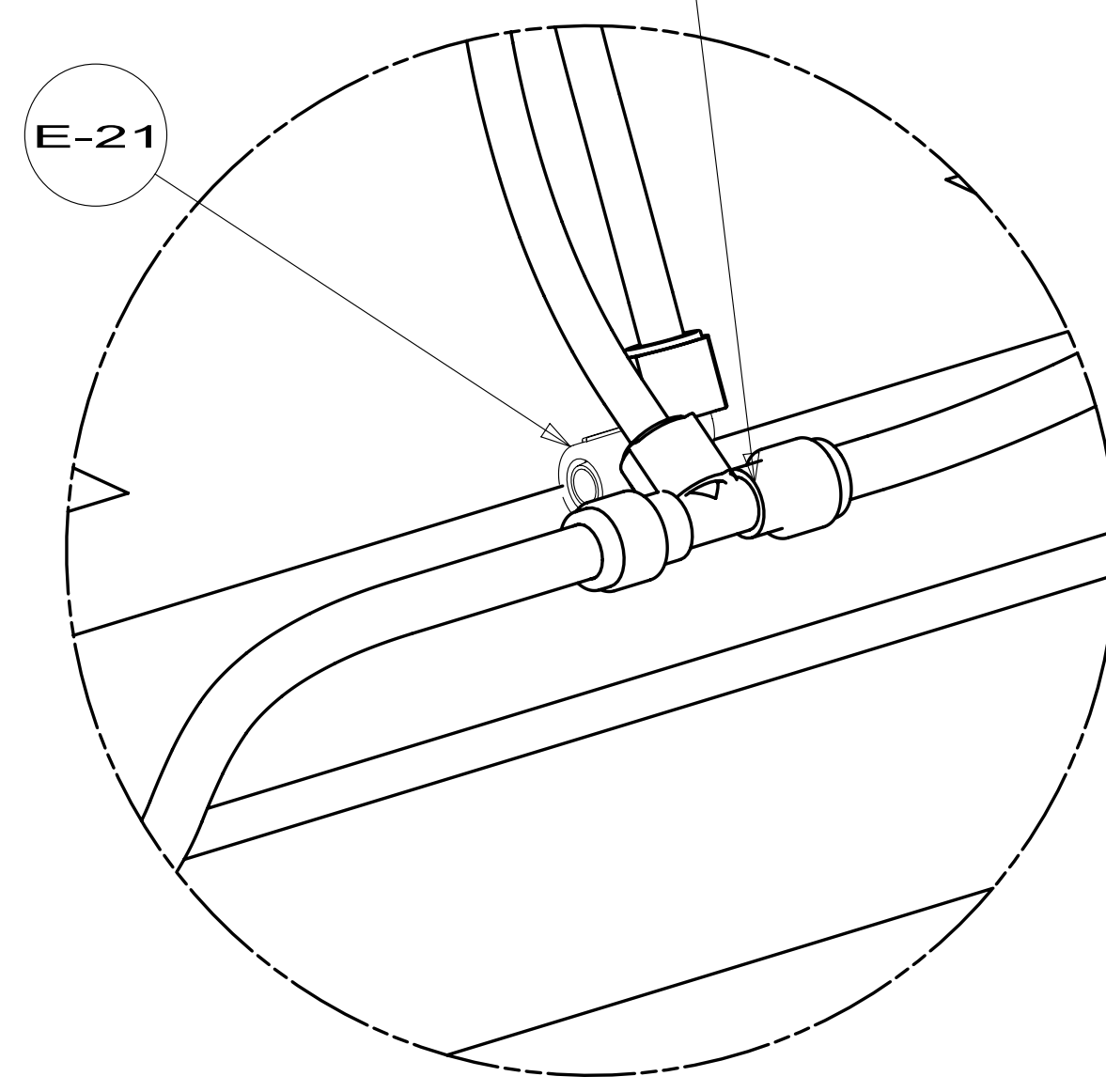
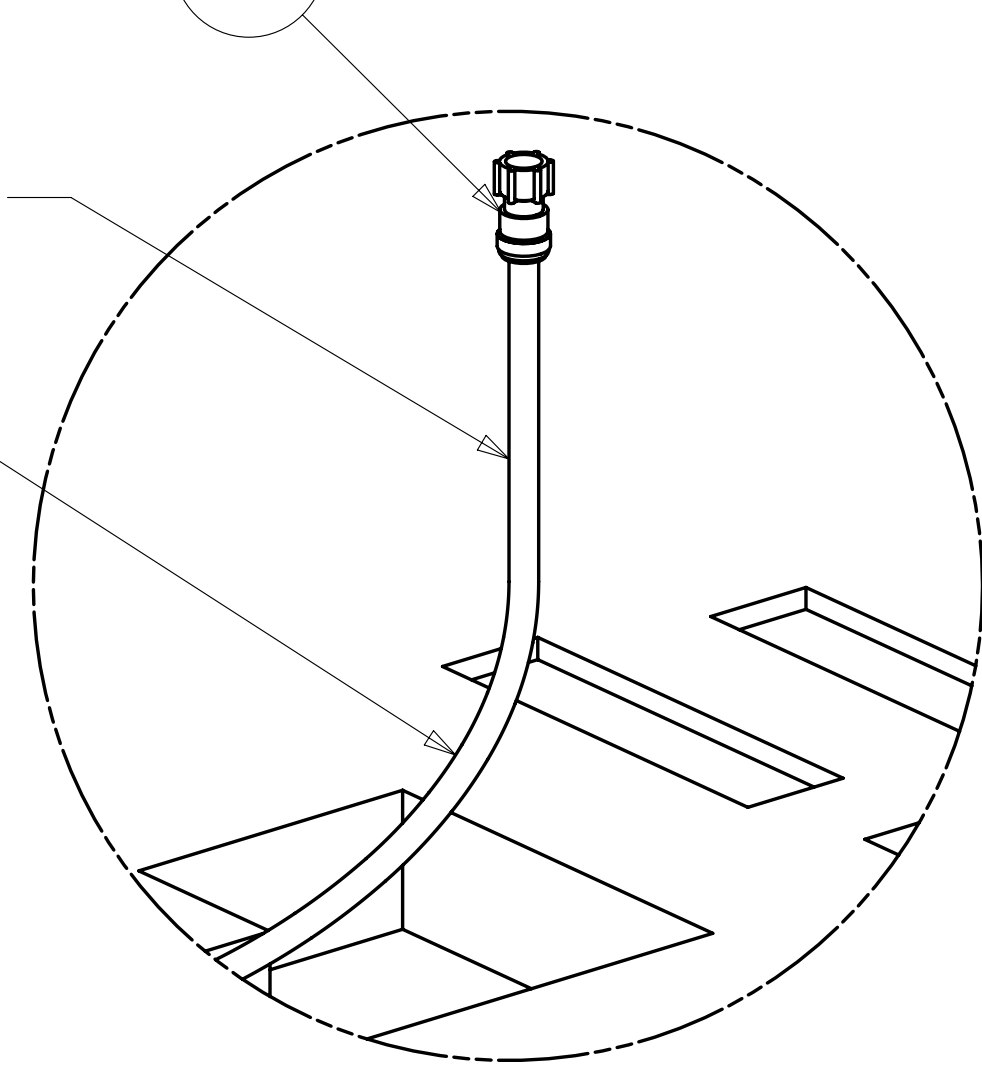
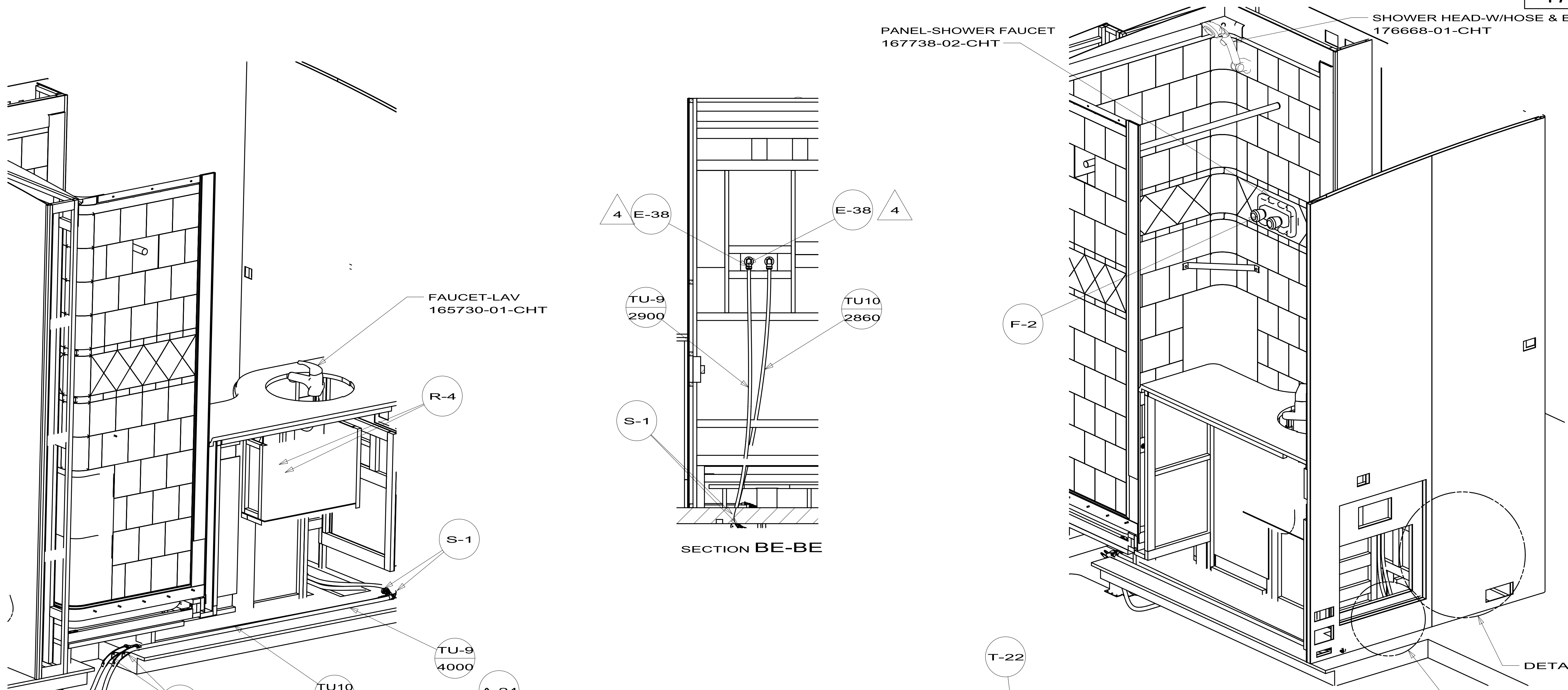


- NOTES:
- 6 USE IN PLACE OF SUPPLIED SCREWS TO ATTACH BRACKET TO WALL.
 - 5 ADD TEFLON TAPE 010405-02-000.
 - 4 ADD TEFLON TAPE 010405-01-000.
 - 3. ALL TUBING TO BE SECURED AT 1200 INTERVALS MAXIMUM WITH CLAMP 010495-01-000 AND SCREW 000G67-10-12B OR EQUIVALENT.
 - 2. TUBING TO BE INSTALLED WITH SUFFICIENT SLOPE TO PROVIDE DRAINAGE TO NEAREST VALVE.
 - 1. PLASTIC FITTINGS TO BE SEALED WITH SEALANT 084456-01-000.

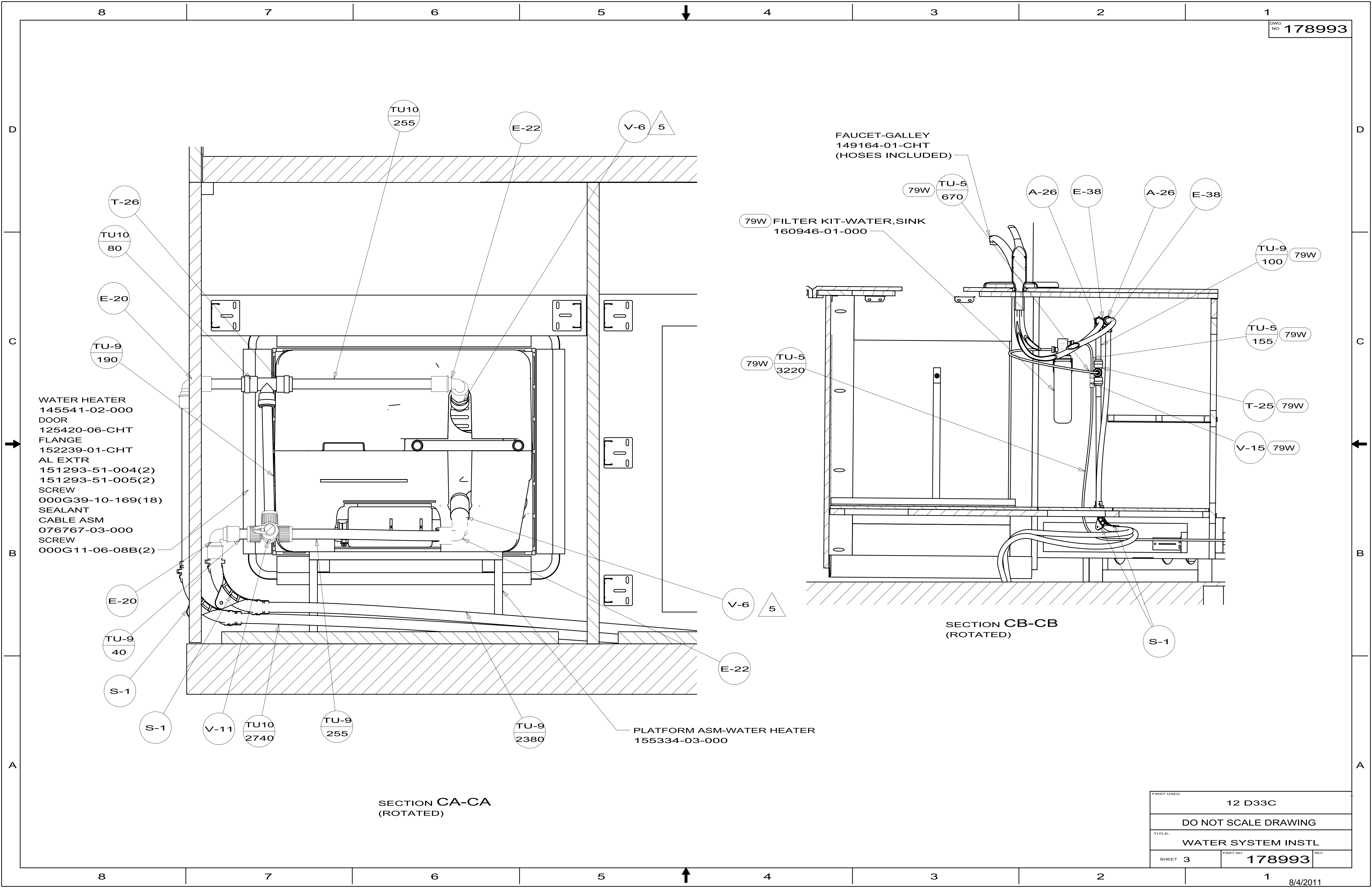
- 79W REFRIGERATOR-4 DOOR
- 144 REFRIGERATOR-DOUBLE DOOR

		COPYRIGHT 2011 WINNEBAGO INDUSTRIES, INC.
DTR	ORIG. DATE	
CHKR	ALL DIMENSIONS ARE IN MILLIMETERS	
P.E.		
M.E.	FIRST USED	
DSNR	12 D33C	
UNSPECIFIED TOLERANCES ARE:		MATERIAL:
WHOLE DIM (X)	: 3	
ONE-PLACE (X.X)	: 1.5	
TWO-PLACE (X.XX)	: 0.50	
ANGLE	: 1°	
THIRD ANGLE PROJECTION		
DO NOT SCALE DRAWING		REFER TO ES0018 FOR FASTENER TIGHTENING GUIDELINES
TITLE: WATER SYSTEM INSTL		
SHEET 1 OF 5	PART NO	178993
REF:	1	

FOR
WATER
CALLOUTS
SEE DWG NO
116230-01-000

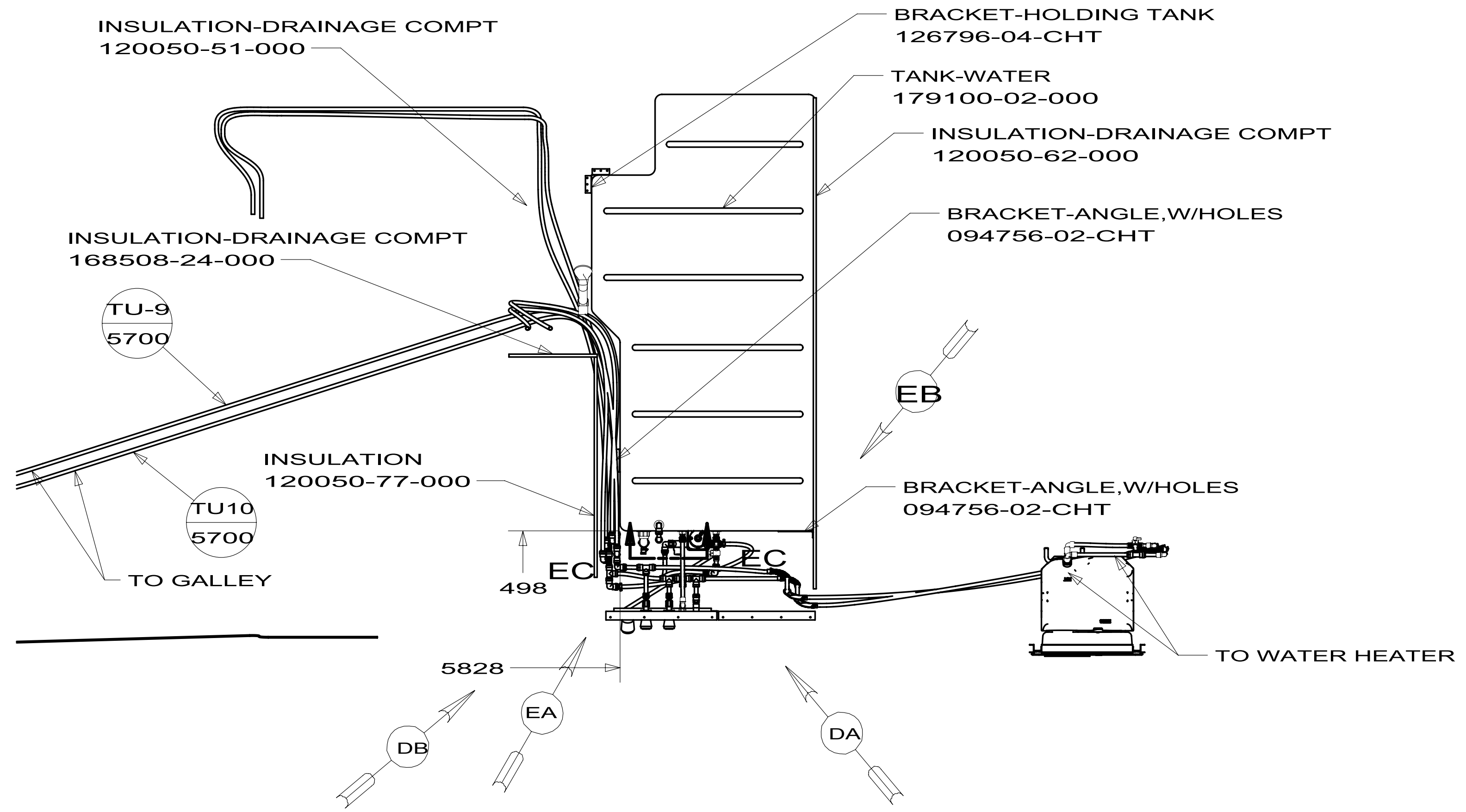
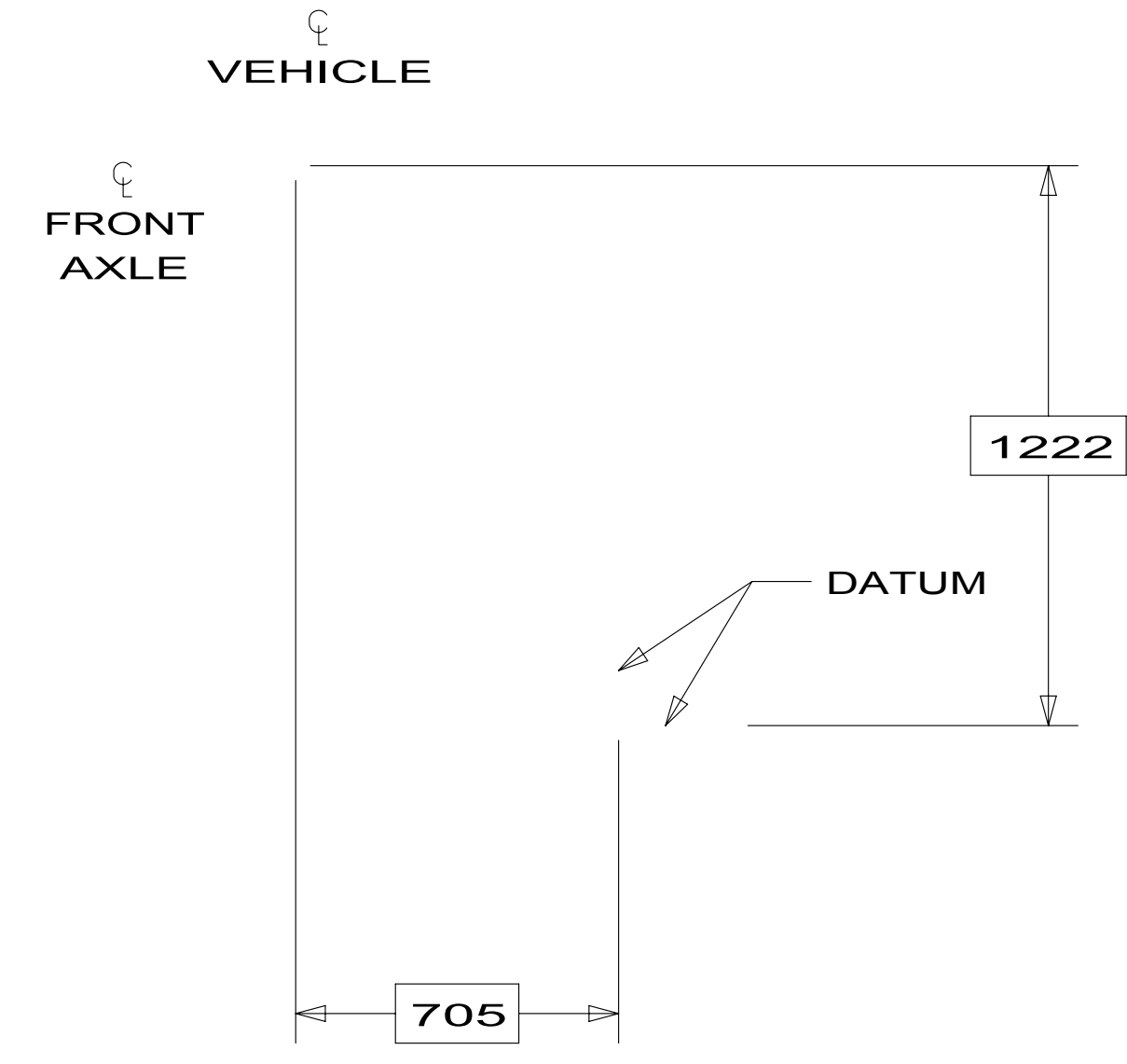


FIRST USED	12 D33C		
TITLE:	DO NOT SCALE DRAWING		
	WATER SYSTEM INSTL		
SHEET 2	PART NO	178993	REV

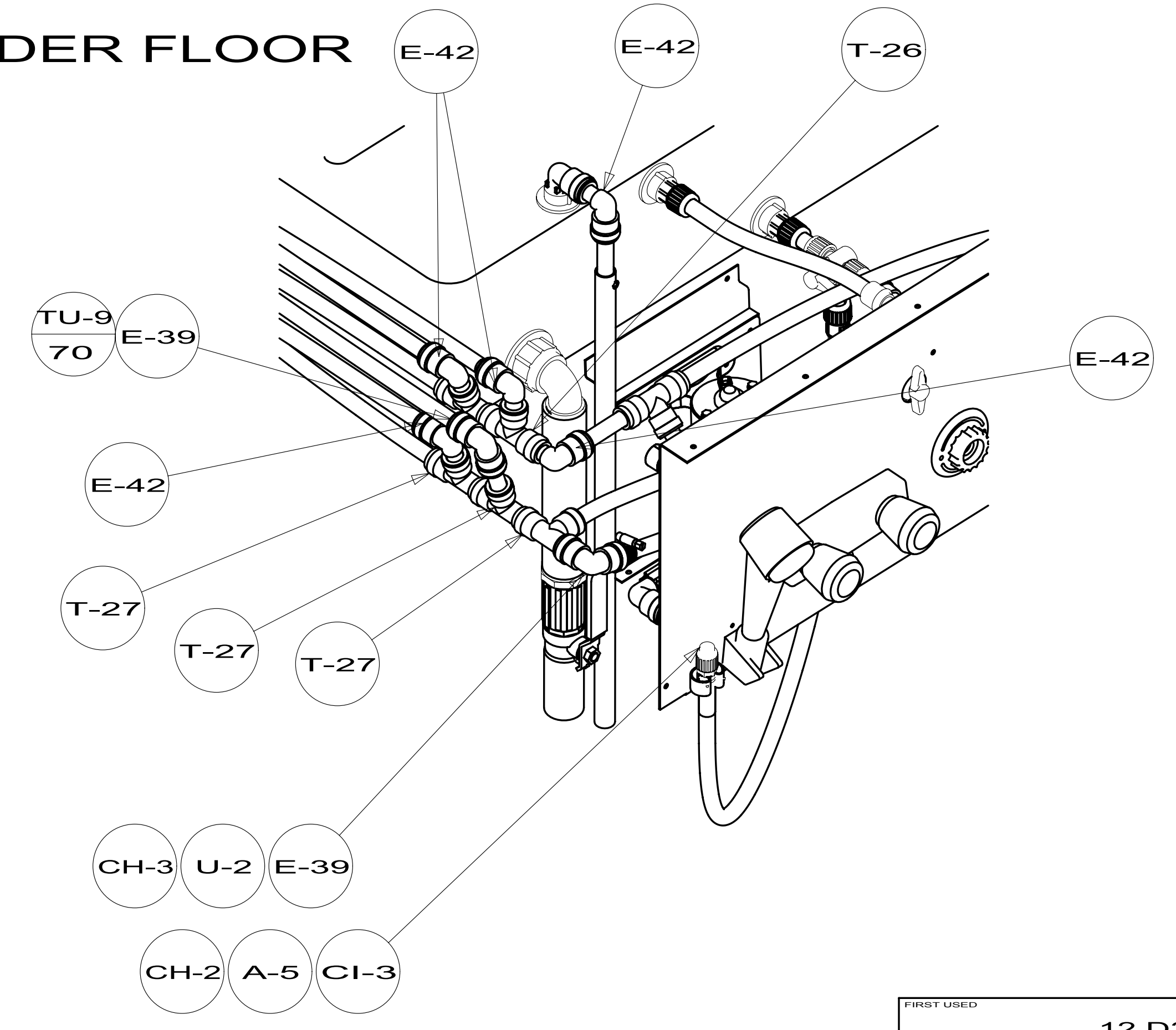
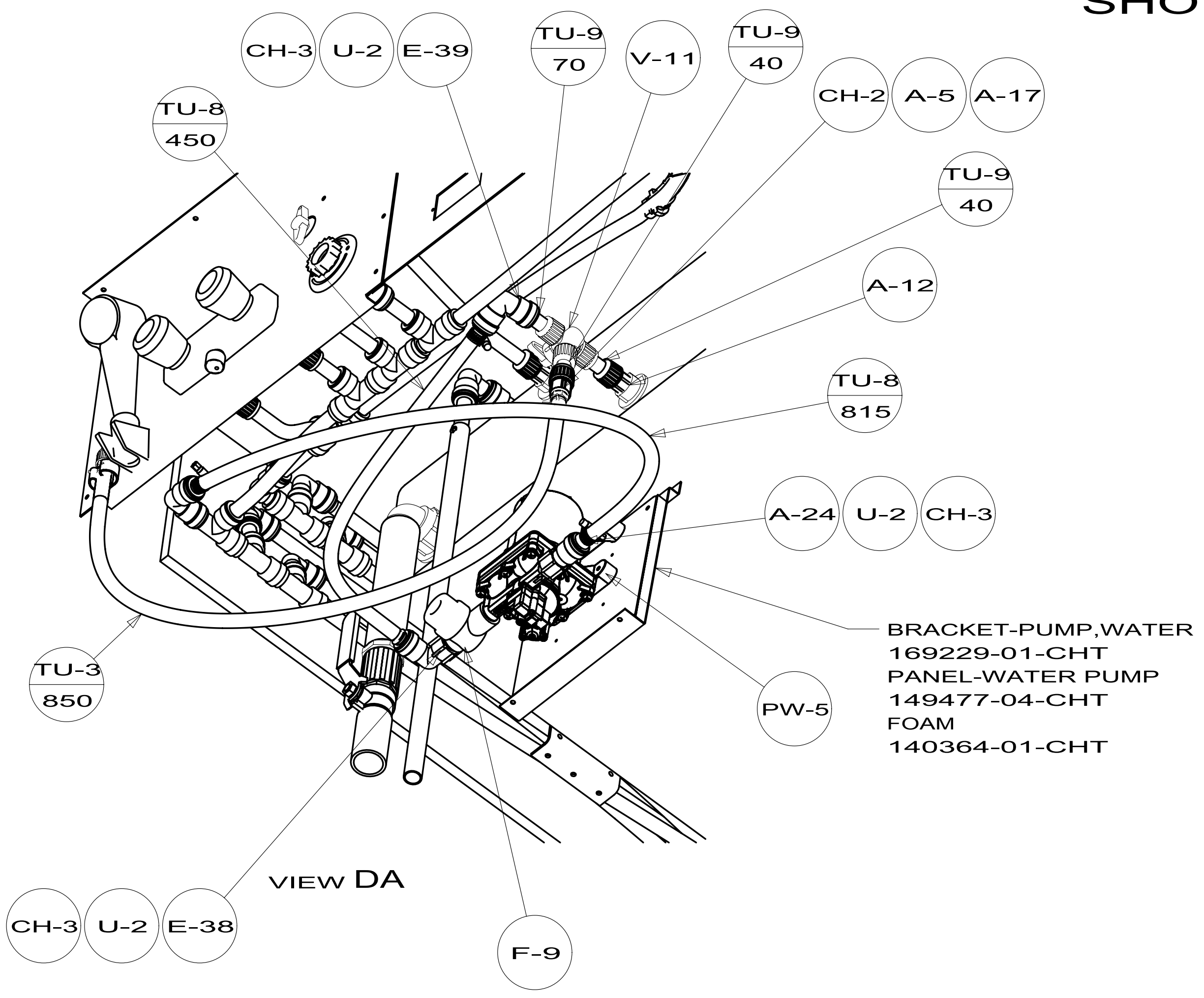


- WATER HEATER 145541-02-000
- DOOR 125420-06-CHT
- FLANGE 152239-01-CHT
- AL EXTR 151293-51-004(2)
- 151293-51-005(2)
- SCREW 000G39-10-169(18)
- SEALANT 076767-03-000
- CABLE ASM 076767-03-000
- SCREW 000G11-06-08B(2)

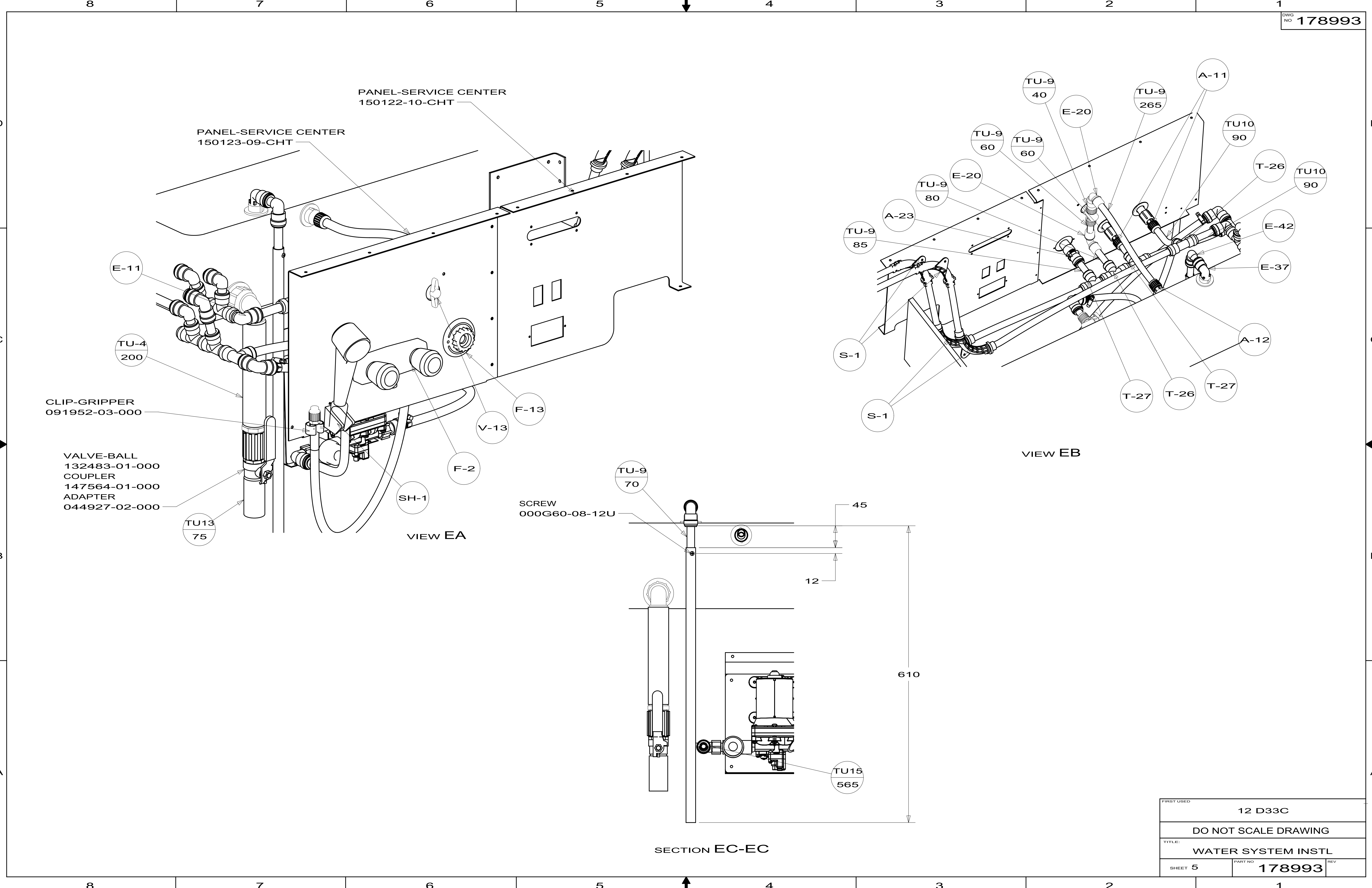
FIRST USED	12 D33C	
TITLE:	DO NOT SCALE DRAWING	
	WATER SYSTEM INSTL	
SHEET 3	PART NO 178993	REV



SHOWING LINES UNDER FLOOR



FIRST USED	12 D33C	
DO NOT SCALE DRAWING		
TITLE: WATER SYSTEM INSTL		
SHEET 4	PART NO 178993	REV



FIRST USED	12 D33C	
TITLE:	DO NOT SCALE DRAWING	
	WATER SYSTEM INSTL	
SHEET 5	PART NO 178993	REV