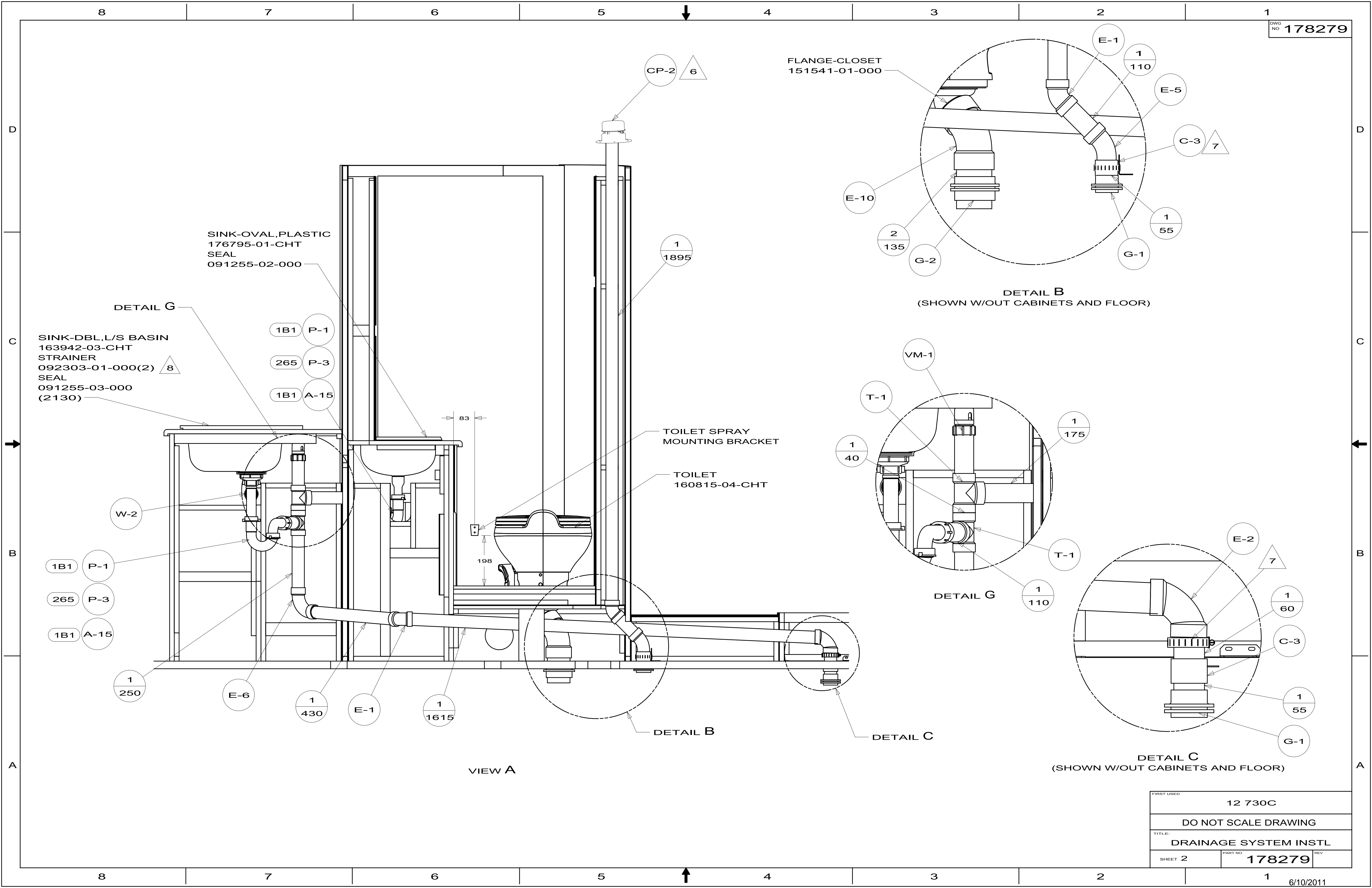


- 8 USE SMOOTH PLUMBERS PUTTY 167459-01-000 TO SEAL STRAINER (0.2 PER STRAINER).
- 7 SECURE VENT PIPE TO FLOOR WITH CLAMP 062401-02-000 (2), SCREW 000G67-10-12B (2), BRACKET 136878-01-CHT (2).
- 6 VENT PIPE MUST PROJECT 51 MIN AND 64 MAX ABOVE ROOF FOR PROPER FIT AND FUNCTION. ADD S-1 (116666-01-CHT SEAL-VENT PIPE) AROUND PIPE ON ROOF BEFORE VENT CAP IS INSTALLED.
5. SEAL AROUND SHOWER WITH SILICONE.
4. SECURE DRAINAGE PIPES TO CABINET USING WIRE TIE 108046-02-000, AND SCREW 000G67-10-12B AT INTERVALS OF NOT MORE THAN 4 FEET APART.
3. ALL PIPE AND FITTINGS TO BE ASSEMBLED WITH SOLVENT 004020-01-000 (USA), 004020-02-000 (CAN)
2. SLOPE OF TRAP ARM MUST BE 6 PER 305 mm.
1. SLOPE OF HORIZONTAL PIPING TO BE MINIMUM OF 3 PER 305 mm.

NOTES:

FOR DRAINAGE CALLOUTS SEE DWG NO 116229-01-000

		COPYRIGHT 2011 WINNEBAGO INDUSTRIES, INC.
DFT-ORIG	ORIG. DATE	
CHKR	ALL DIMENSIONS ARE IN MILLIMETERS	
P.E.		
M.E.	FIRST USED	
DSNR	12 730C	
UNSPECIFIED TOLERANCES ARE:		MATERIAL:
WHOLE DIM (X)	: 3	
ONE-PLACE (X.X)	: 1.5	
TWO-PLACE (X.XX)	: 0.50	
ANGLE	: 1°	
THIRD ANGLE PROJECTION		
DO NOT SCALE DRAWING		REFER TO ES0018 FOR FASTENER TIGHTENING GUIDELINES
TITLE: DRAINAGE SYSTEM INSTL		
SHEET 1 OF 4	PART NO 178279	REV
REF:	1	6/10/2011



SINK-OVAL, PLASTIC  
176795-01-CHT  
SEAL  
091255-02-000

SINK-DBL, L/S BASIN  
163942-03-CHT  
STRAINER  
092303-01-000(2)  $\Delta$  8  
SEAL  
091255-03-000  
(2130)

FLANGE-CLOSET  
151541-01-000

DETAIL B  
(SHOWN W/OUT CABINETS AND FLOOR)

DETAIL G

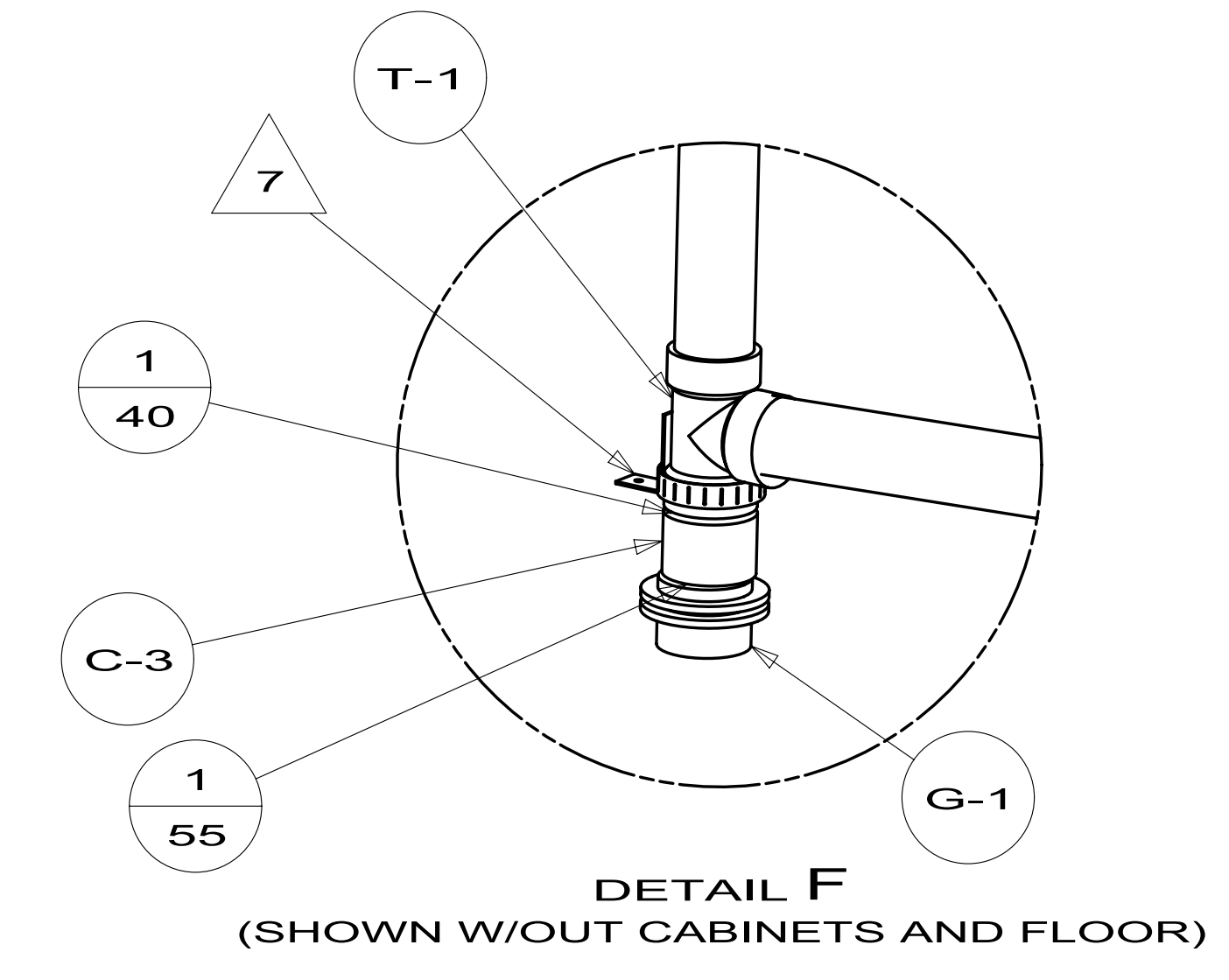
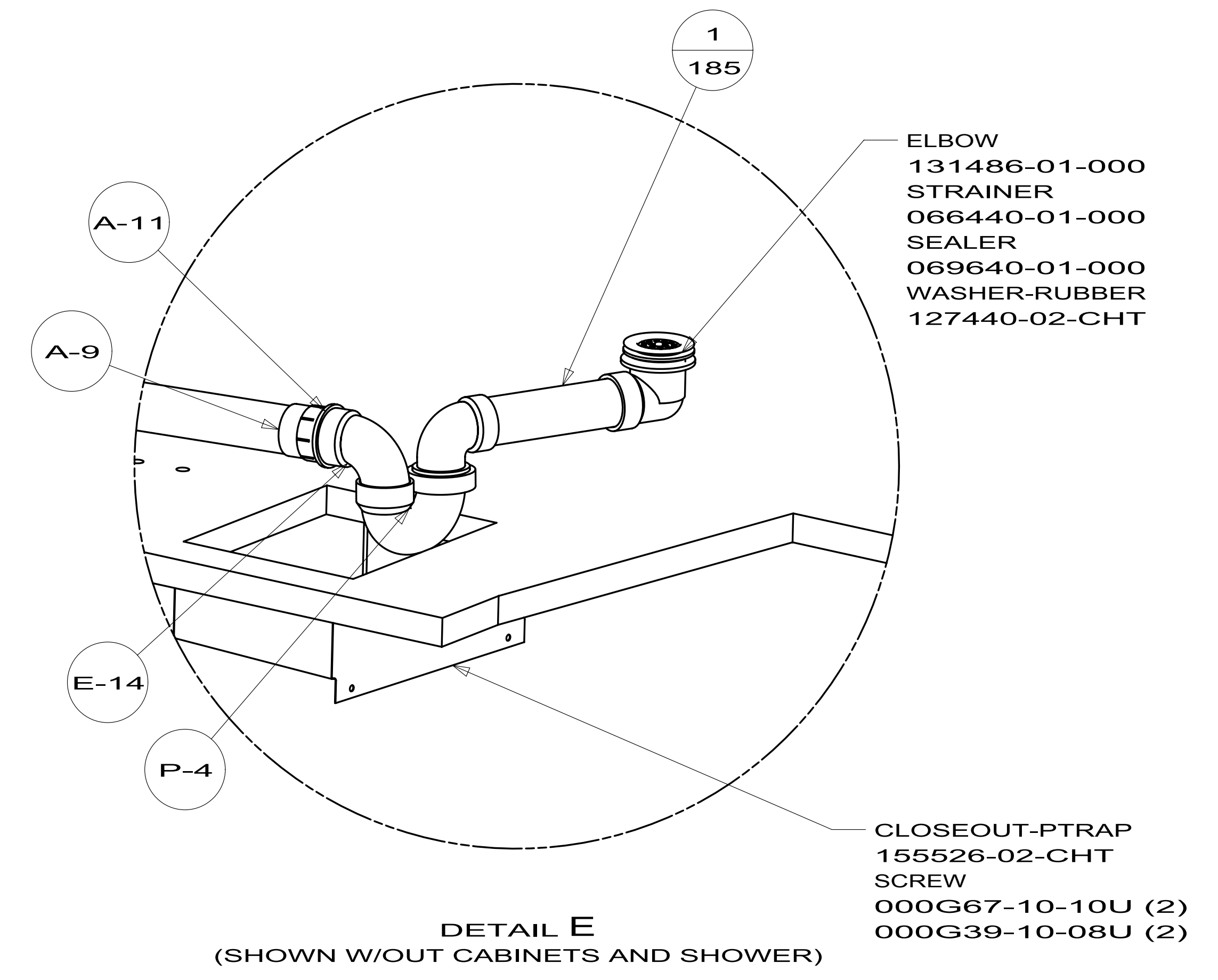
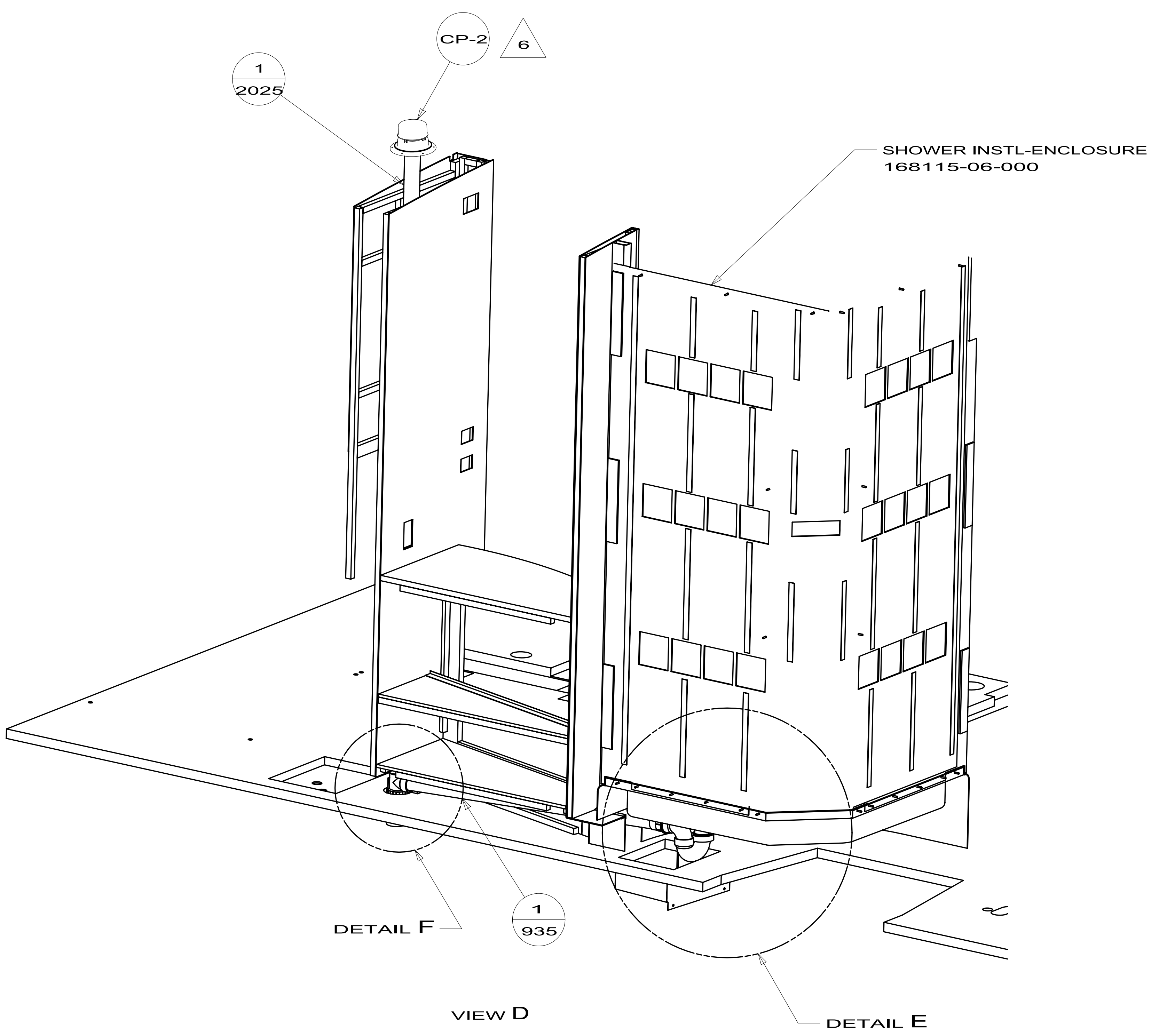
DETAIL C  
(SHOWN W/OUT CABINETS AND FLOOR)

TOILET SPRAY  
MOUNTING BRACKET

TOILET  
160815-04-CHT

VIEW A

FIRST USED	12 730C	
TITLE:	DO NOT SCALE DRAWING	
TITLE:	DRAINAGE SYSTEM INSTL	
SHEET 2	PART NO	178279
	REV	

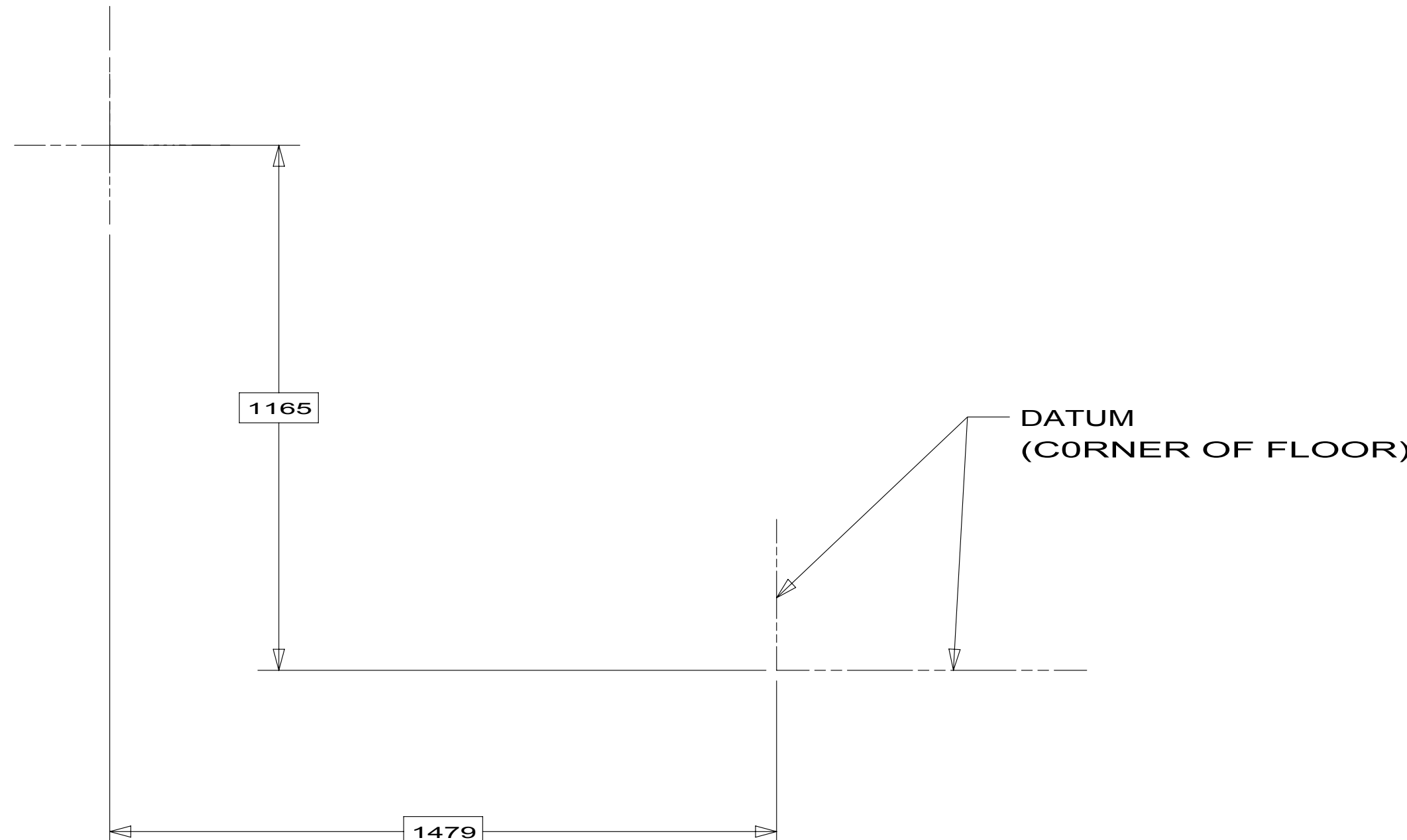
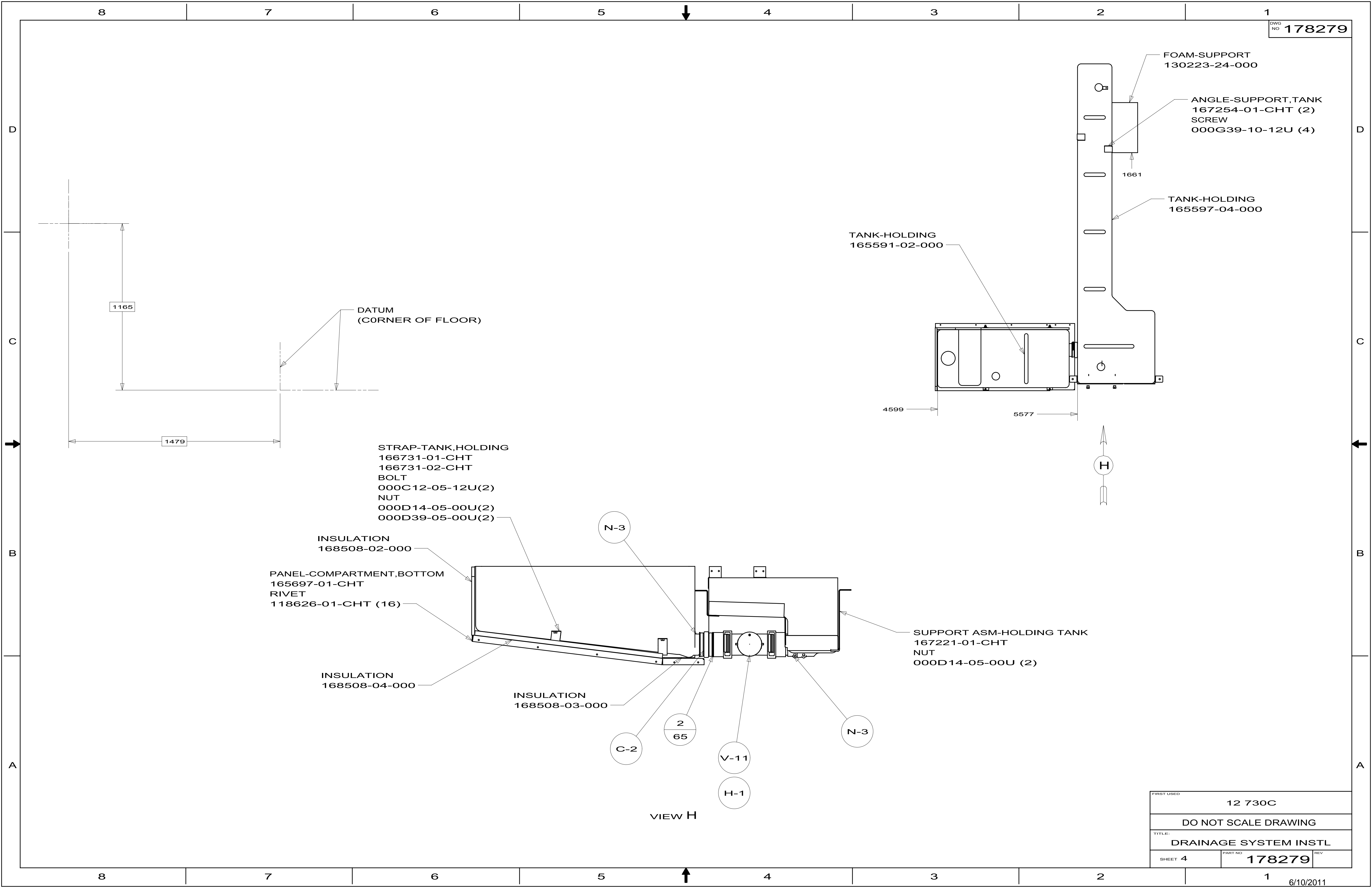


DETAIL F

VIEW D

DETAIL E

FIRST USED	12 730C	
TITLE:	DO NOT SCALE DRAWING	
	DRAINAGE SYSTEM INSTL	
SHEET 3	PART NO 178279	REV



STRAP-TANK,HOLDING  
166731-01-CHT  
166731-02-CHT  
BOLT  
000C12-05-12U(2)  
NUT  
000D14-05-00U(2)  
000D39-05-00U(2)

INSULATION  
168508-02-000  
PANEL-COMPARTMENT,BOTTOM  
165697-01-CHT  
RIVET  
118626-01-CHT (16)

INSULATION  
168508-04-000

INSULATION  
168508-03-000

TANK-HOLDING  
165591-02-000

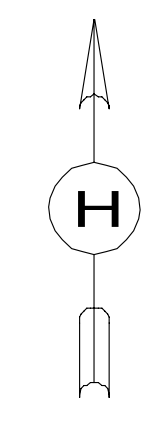
FOAM-SUPPORT  
130223-24-000

ANGLE-SUPPORT,TANK  
167254-01-CHT (2)  
SCREW  
000G39-10-12U (4)

TANK-HOLDING  
165597-04-000

4599

5577



N-3

C-2

2  
65

V-11

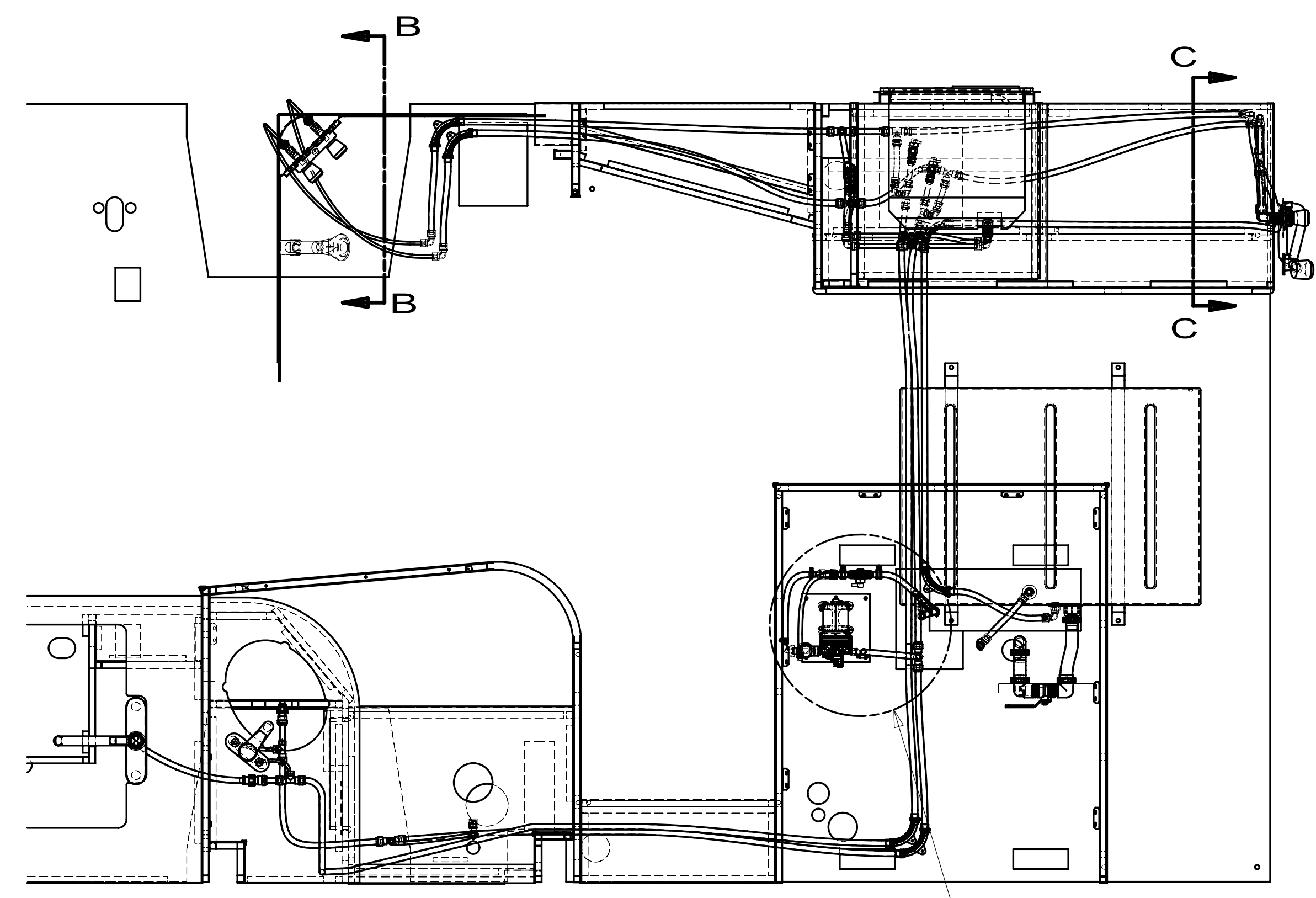
H-1

N-3

SUPPORT ASM-HOLDING TANK  
167221-01-CHT  
NUT  
000D14-05-00U (2)

VIEW H

FIRST USED	12 730C		
TITLE:	DO NOT SCALE DRAWING		
	DRAINAGE SYSTEM INSTL		
SHEET 4	PART NO	178279	REV



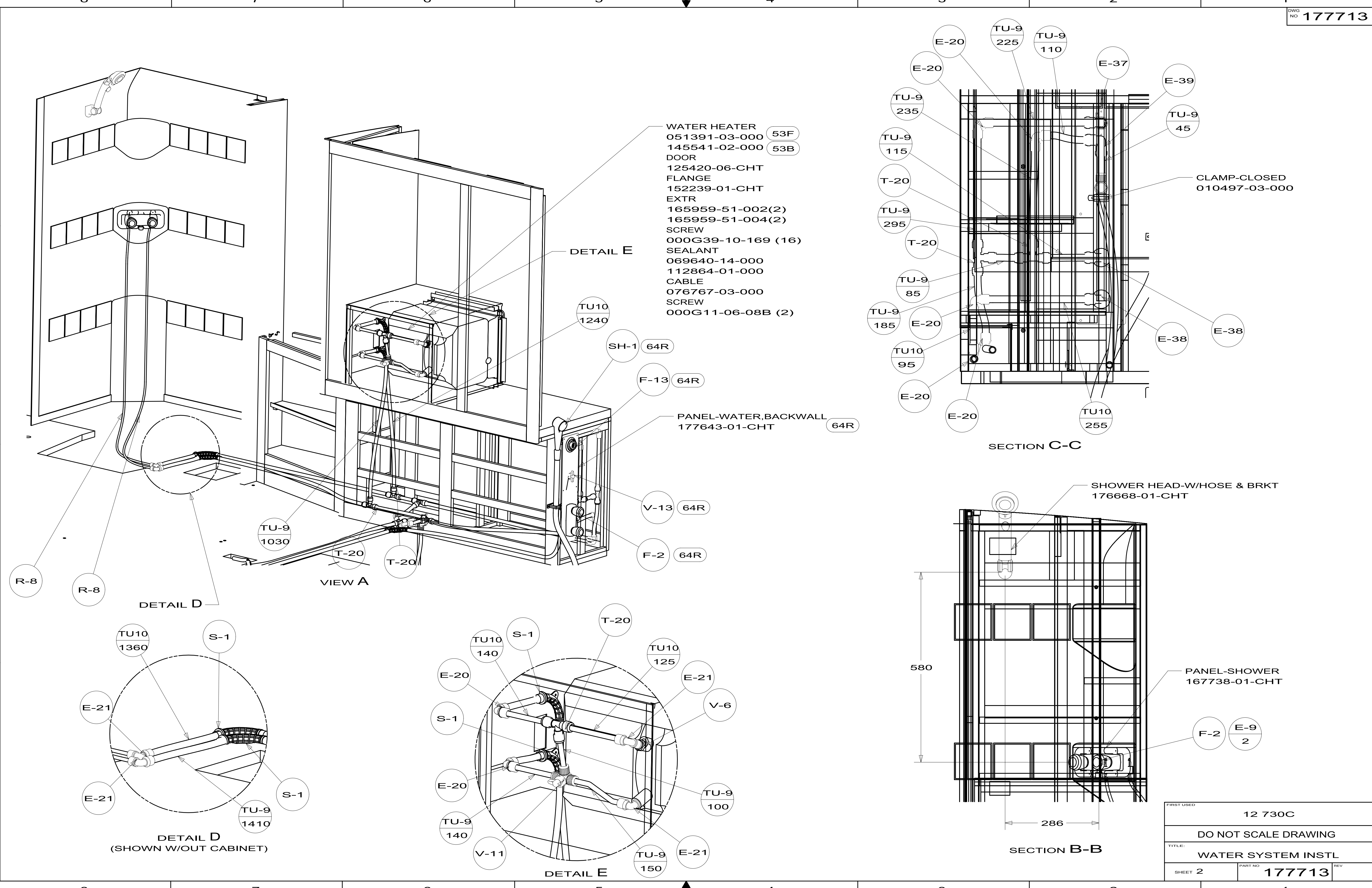
DETAIL G

- 29B WATER PURIFIER
- 501 WATER PURIFIER WITHOUT
- 64R EXTERIOR WASH STATION
- IJ4 EXT WASH STATION-WITHOUT
- 53B WTR HTR-6 GAL ELECTRIC/LP GAS
- 53F WATER HEATER-ELEC.IGNITION
- 54E WATER SYS WINTERIZATION PKG

- NOTES:
- 7 ADD PIPE WRAP (LADDER SCRAP 110157-02-000) INSULATION.
  - 6 ADD TEFLON TAPE 010405-03-000.
  - 5 ADD TEFLON TAPE 010405-02-000.
  - 4 ADD TEFLON TAPE 010405-01-000.
3. ALL TUBING TO BE SECURED AT 1200 INTERVALS MAXIMUM WITH CLAMP 010495-01-000 AND SCREW 000G67-10-12B OR EQUIVALENT.
2. TUBING TO BE INSTALLED WITH SUFFICIENT SLOPE TO PROVIDE DRAINAGE TO NEAREST VALVE.
1. PLASTIC FITTINGS TO BE SEALED WITH SEALANT 084456-01-000.

FOR WATER CALLOUTS SEE DWG NO 116230-01-000

		COPYRIGHT 2011 WINNEBAGO INDUSTRIES, INC.
DTR	ORIG. DATE	
CHKR	ALL DIMENSIONS ARE IN MILLIMETERS	
P.E.		
M.E.	FIRST USED	
DSNR	12 730C	
UNSPECIFIED TOLERANCES ARE:		
WHOLE DIM (X)	: 3	
ONE-PLACE (X.X)	: 1.5	
TWO-PLACE (X.XX)	: 0.50	
ANGLE	: 1°	
THIRD ANGLE PROJECTION		
DO NOT SCALE DRAWING		REFER TO ES0018 FOR FASTENER TIGHTENING GUIDELINES
TITLE: WATER SYSTEM INSTL		
SHEET 1 OF 4	PART NO 177713	REV
REF:	1	



- WATER HEATER 051391-03-000 53F
- 145541-02-000 53B
- DOOR 125420-06-CHT
- FLANGE 152239-01-CHT
- EXTR 165959-51-002(2)
- 165959-51-004(2)
- SCREW 000G39-10-169 (16)
- SEALANT 069640-14-000
- 112864-01-000
- CABLE 076767-03-000
- SCREW 000G11-06-08B (2)

DETAIL E

TU10 1240

SH-1 64R

F-13 64R

PANEL-WATER, BACKWALL 177643-01-CHT 64R

V-13 64R

F-2 64R

TU-9 1030

T-20

T-20

VIEW A

DETAIL D

TU10 1360

S-1

E-21

TU-9 1410

S-1

DETAIL D (SHOWN W/OUT CABINET)

TU10 140

S-1

T-20

TU10 125

E-21

V-6

E-20

S-1

E-20

TU-9 140

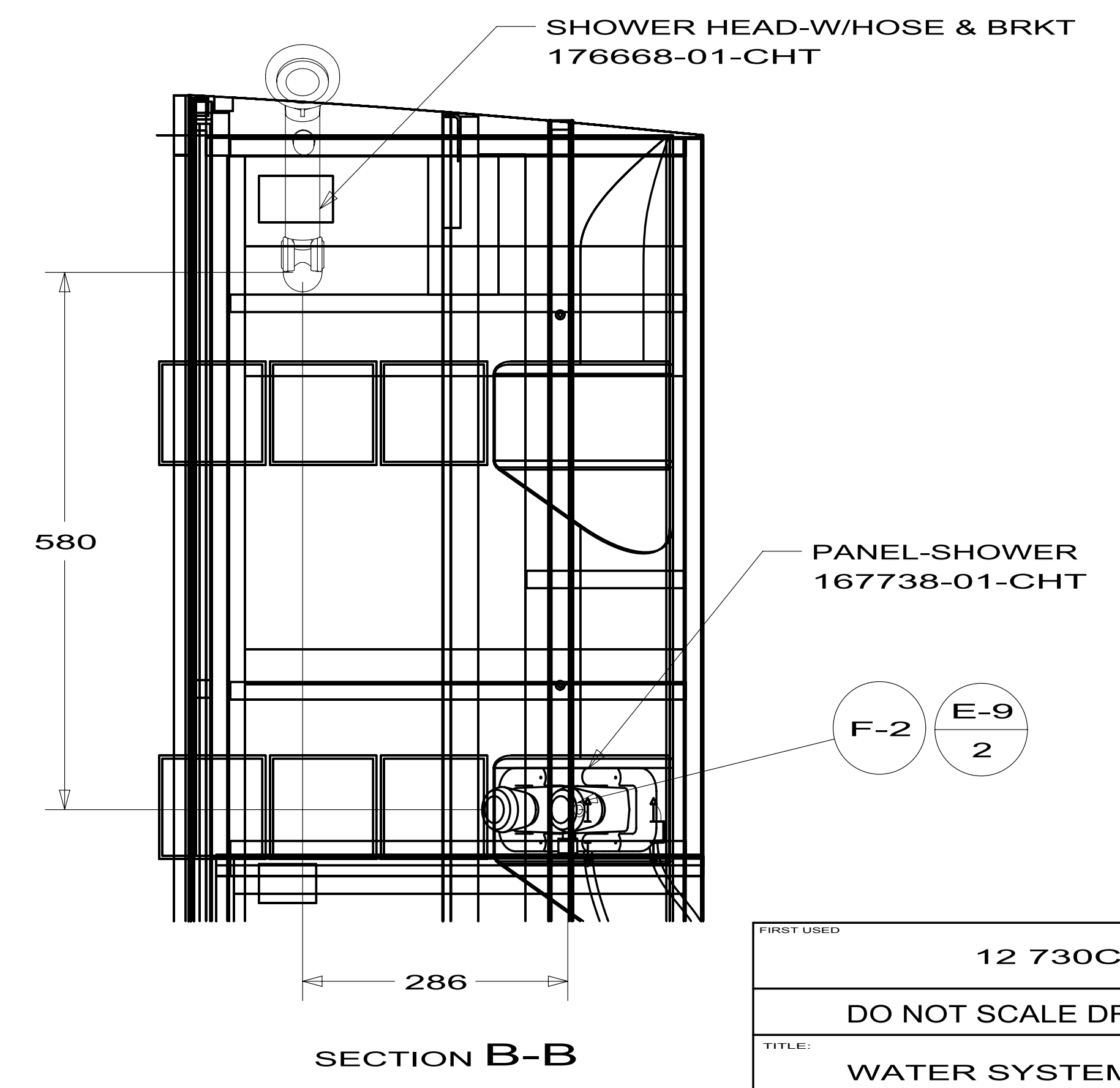
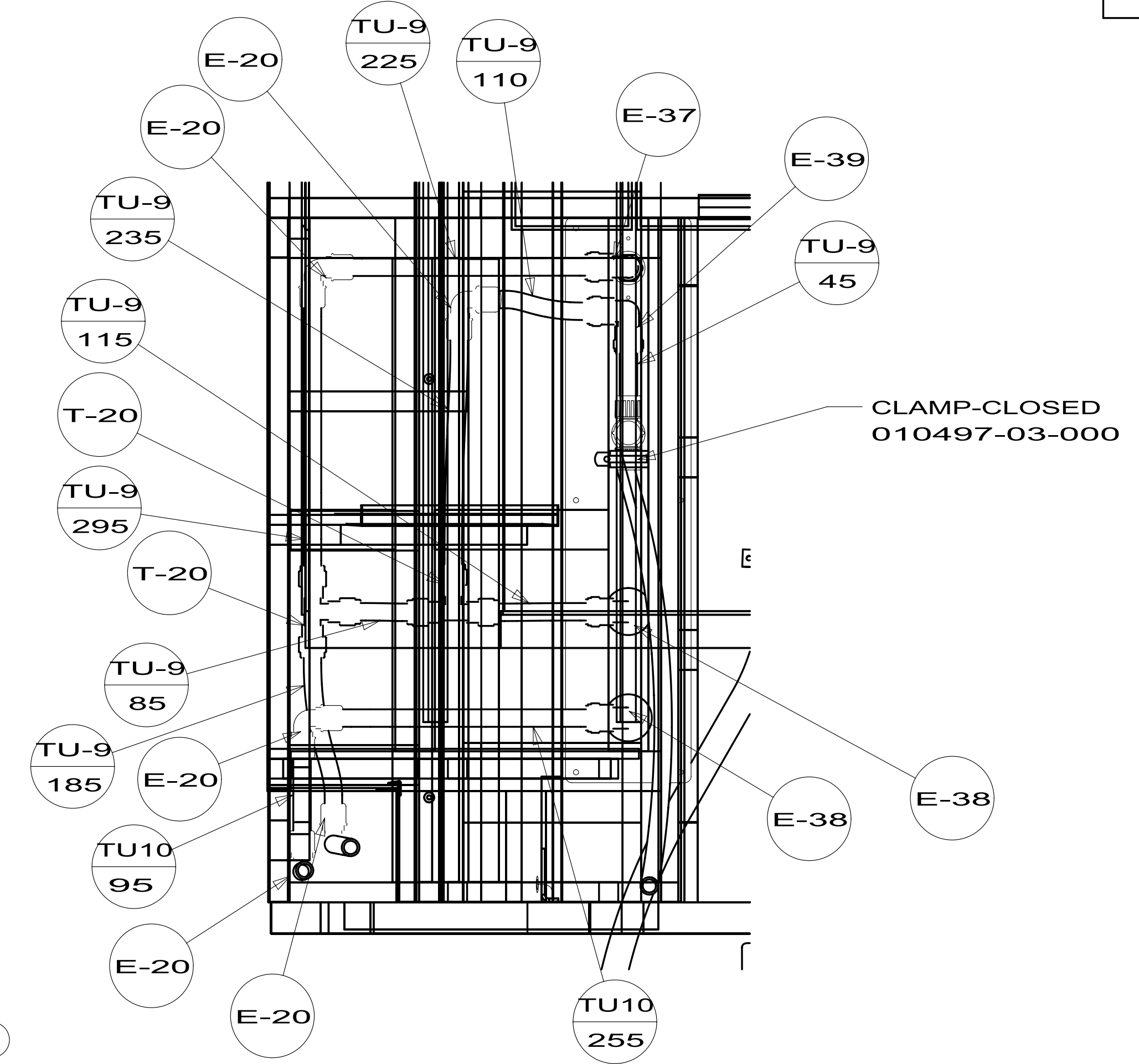
V-11

TU-9 100

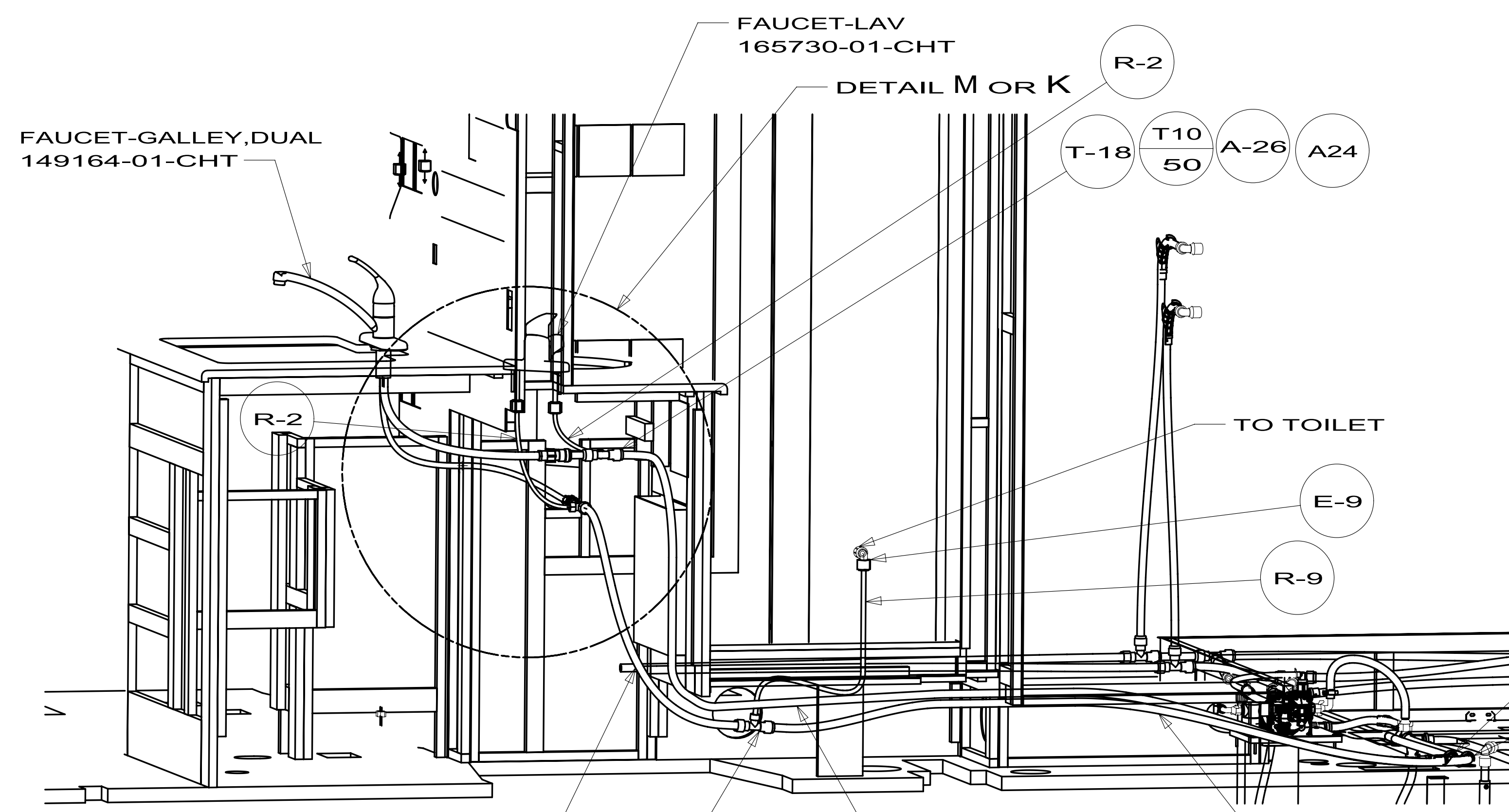
TU-9 150

E-21

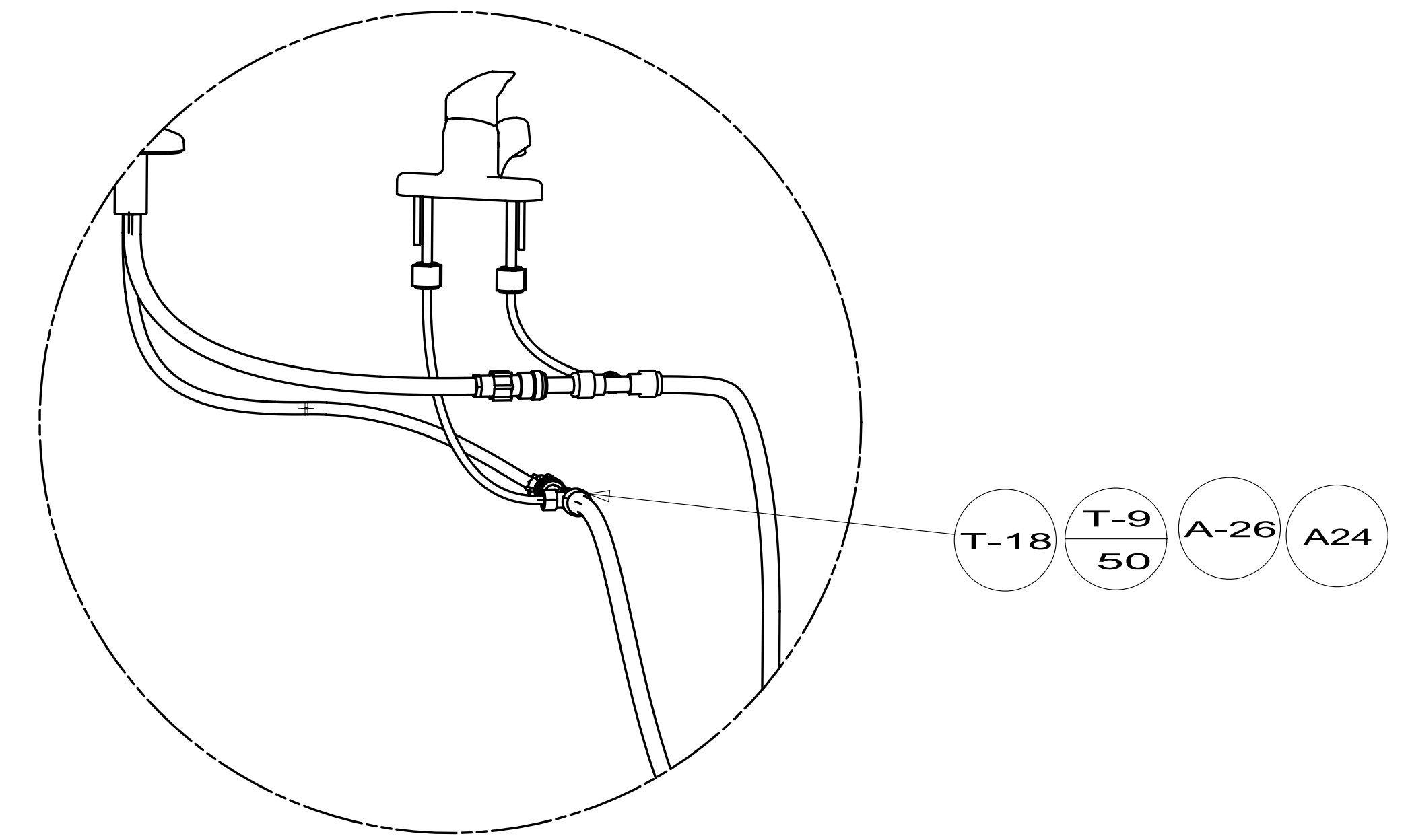
DETAIL E



FIRST USED	12 730C	
DO NOT SCALE DRAWING		
TITLE:	WATER SYSTEM INSTL	
SHEET 2	PART NO	177713
		REV

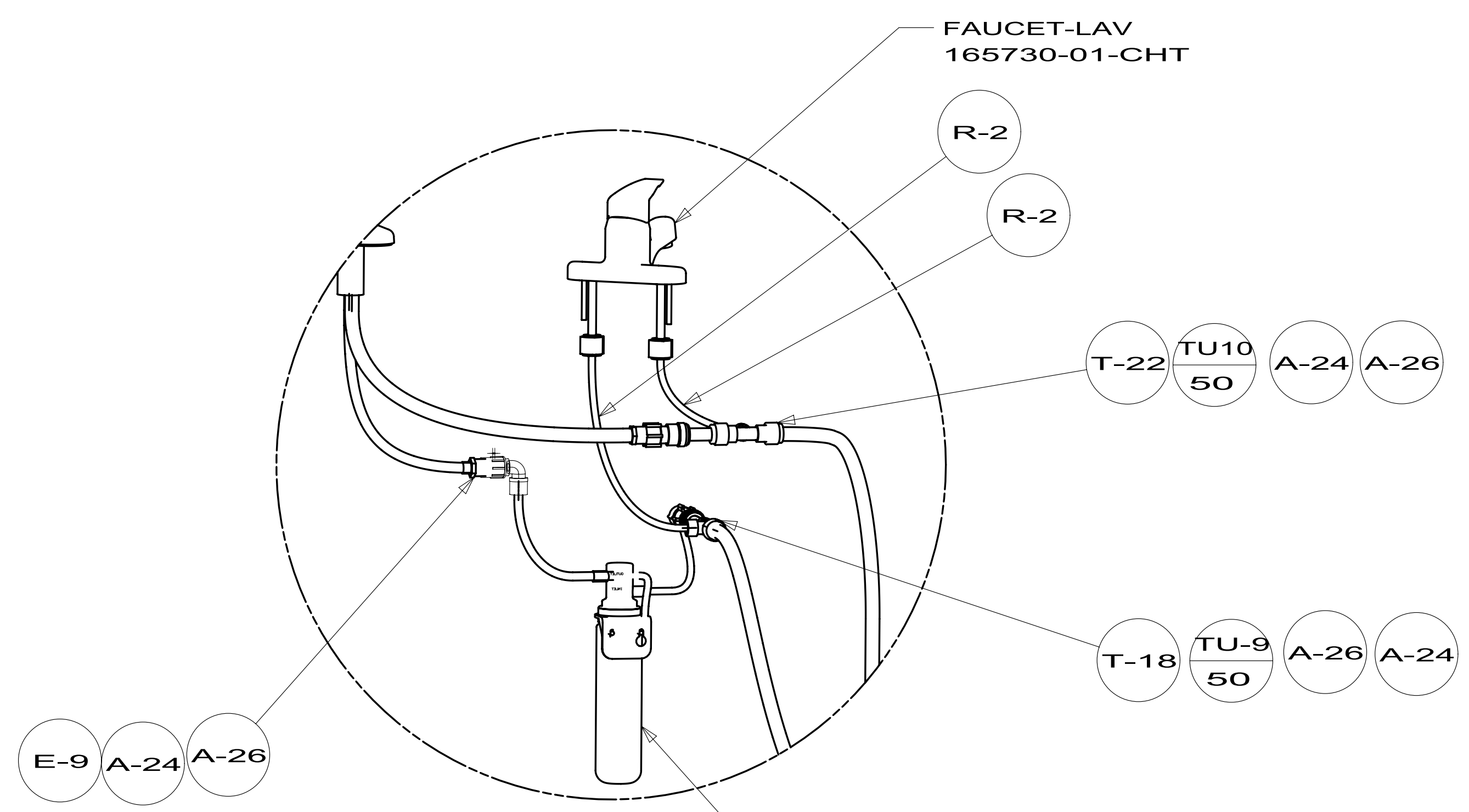


VIEW F



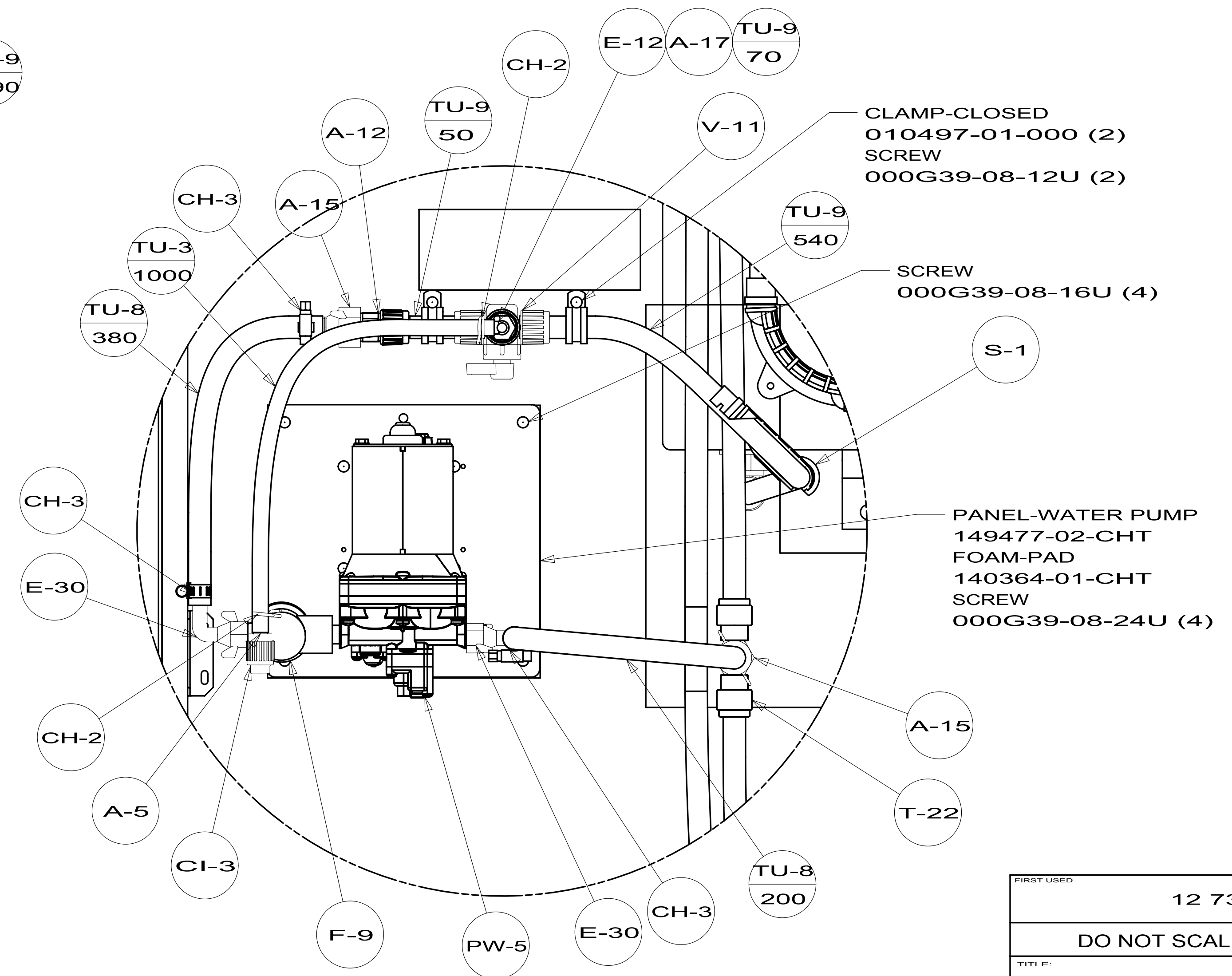
DETAIL K

29B



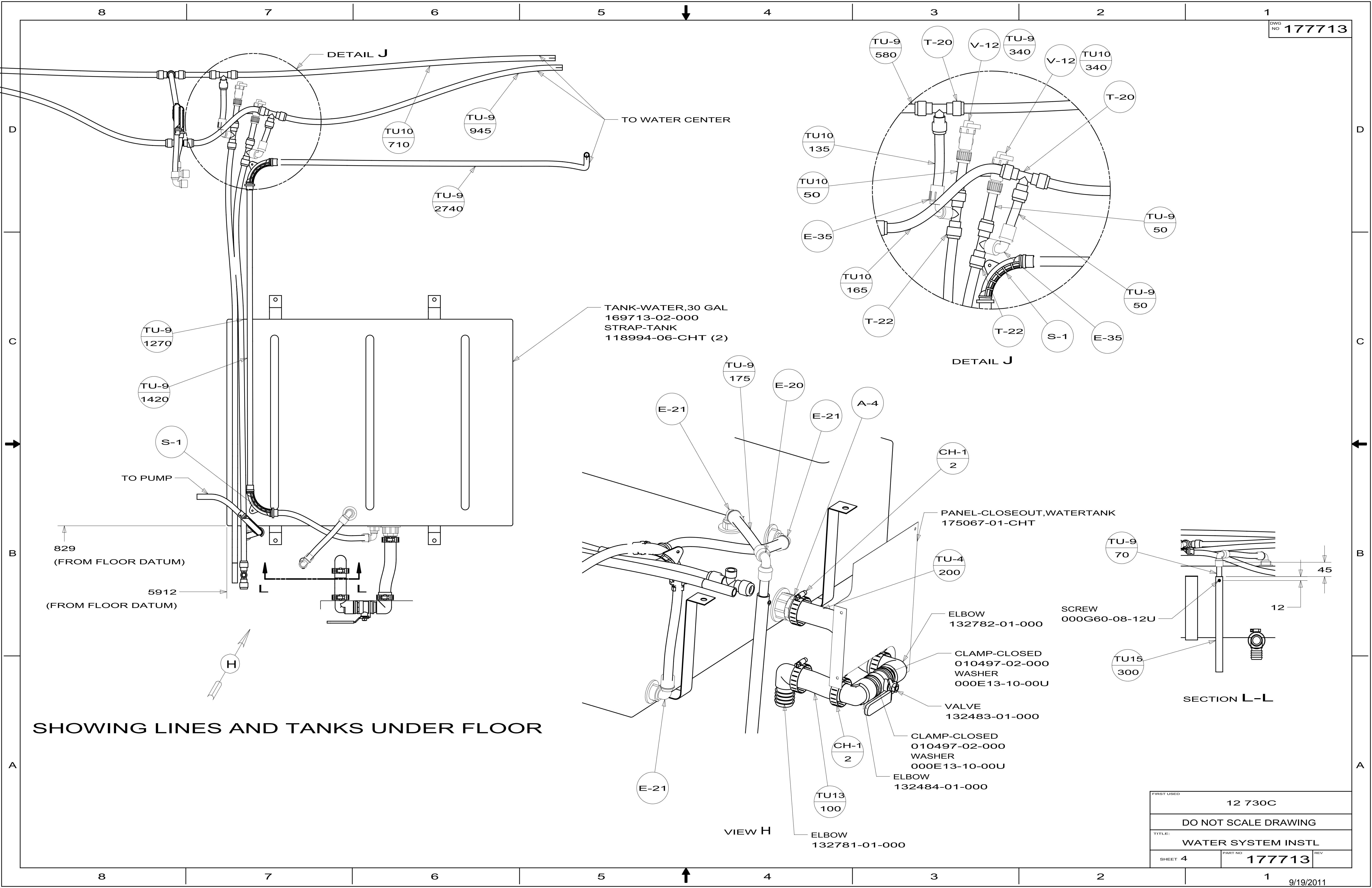
DETAIL M

29B



DETAIL G

FIRST USED	12 730C	
DO NOT SCALE DRAWING		
TITLE:	WATER SYSTEM INSTL	
SHEET 3	PART NO 177713	REV



TO WATER CENTER

TANK-WATER, 30 GAL  
169713-02-000  
STRAP-TANK  
118994-06-CHT (2)

DETAIL J

PANEL-CLOSEOUT, WATERTANK  
175067-01-CHT

SECTION L-L

VIEW H

SHOWING LINES AND TANKS UNDER FLOOR

FIRST USED	12 730C	
TITLE:	DO NOT SCALE DRAWING	
TITLE:	WATER SYSTEM INSTL	
SHEET 4	PART NO 177713	REV