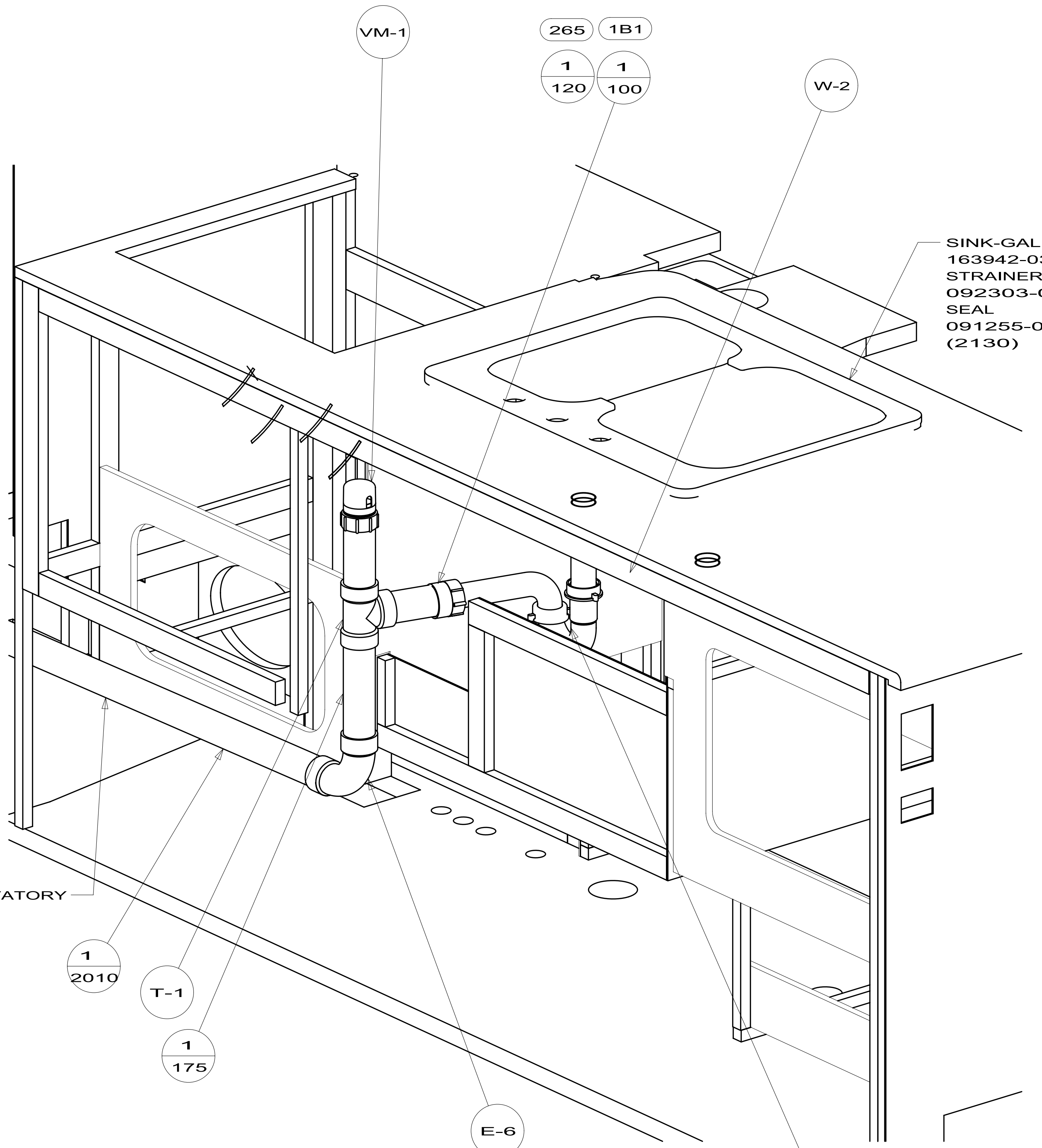


- 8. USE SMOOTH PLUMBERS PUTTY 167459-01-000 TO SEAL STRAINER (0.2 PER STRAINER).
- 7. WATERLESS P-TRAP MUST BE INSTALLED WITH RIBS POINTING DOWN.
- 6. ROTATED TOILET TO MAXIMIZE ROOM WHILE ALLOWING LID TO REMAIN IN THE UPRIGHT POSITION.
- 5. SEAL AROUND SHOWER WITH SILICONE.
- 4. VENT PIPE MUST PROJECT 51 MIN AND 64 MAX ABOVE ROOF FOR PROPER FIT AND FUNCTION.
- 3. ALL PIPE AND FITTINGS TO BE ASSEMBLED WITH SOLVENT 004020-01-000 (US), 004020-02-000 (CAN).
- 2. SLOPE OF TRAP ARM MUST BE 6 PER 305 mm.
- 1. SLOPE OF HORIZONTAL PIPING TO BE MIN 3 PER 305 mm.

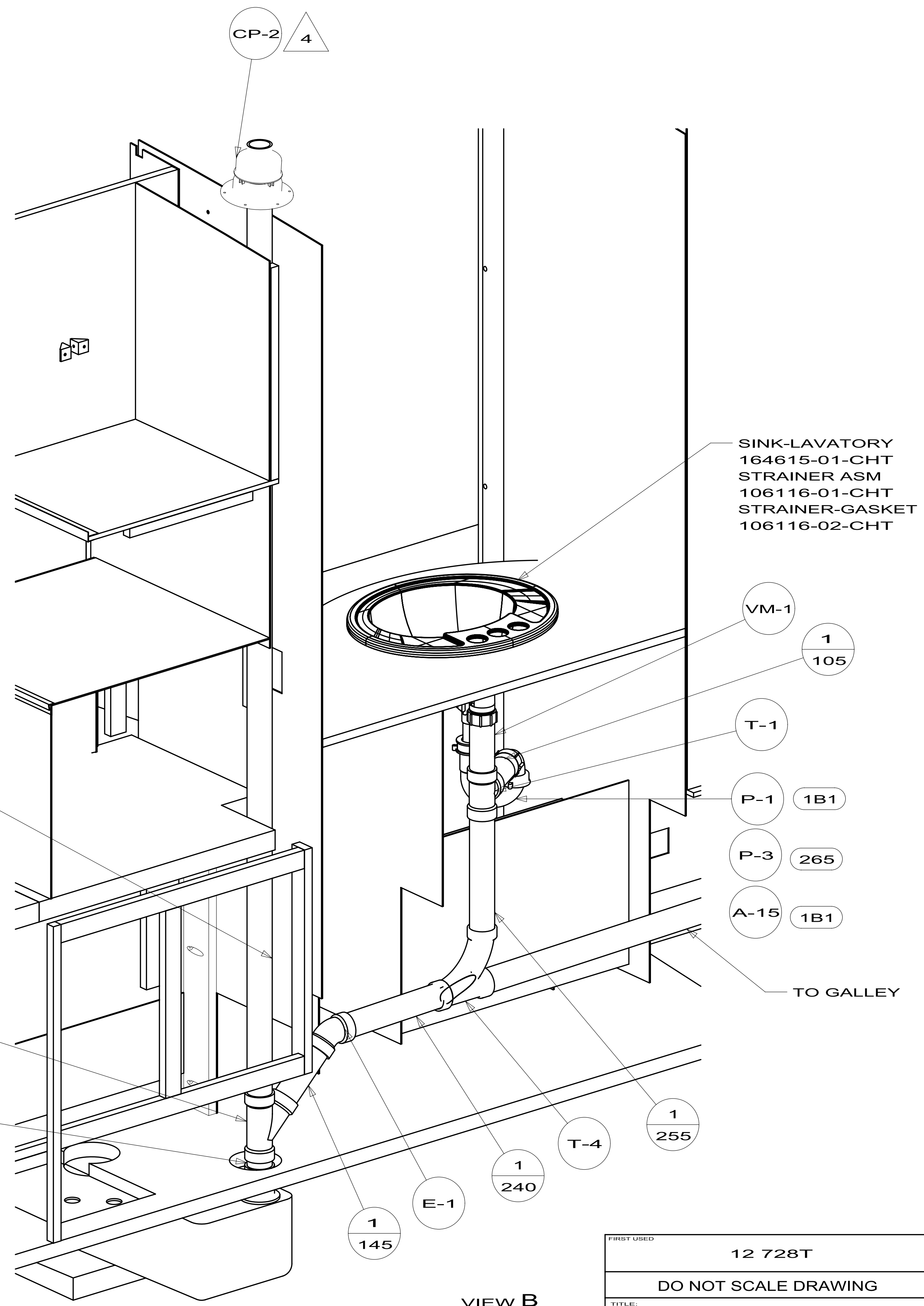
NOTES:

FOR DRAINAGE CALLOUTS SEE DWG NO 116229-01-000

		COPYRIGHT 2011 WINNEBAGO INDUSTRIES, INC.	
DTR	ORIG. DATE	ALL DIMENSIONS ARE IN MILLIMETERS	
CHKR			
P.E.			
M.E.	FIRST USED		
DSNR		12 728T	
UNSPECIFIED TOLERANCES ARE:		MATERIAL:	
WHOLE DIM (X)	: 3		
ONE-PLACE (X.X)	: 1.5		
TWO-PLACE (X.XX)	: 0.50		
ANGLE	: 1°		
THIRD ANGLE PROJECTION			
DO NOT SCALE DRAWING		REFER TO ES0018 FOR FASTENER TIGHTENING GUIDELINES	
TITLE: DRAINAGE SYSTEM			
SHEET 1 OF 4	PART NO 177005	REV	
REF:	1	6/10/2011	

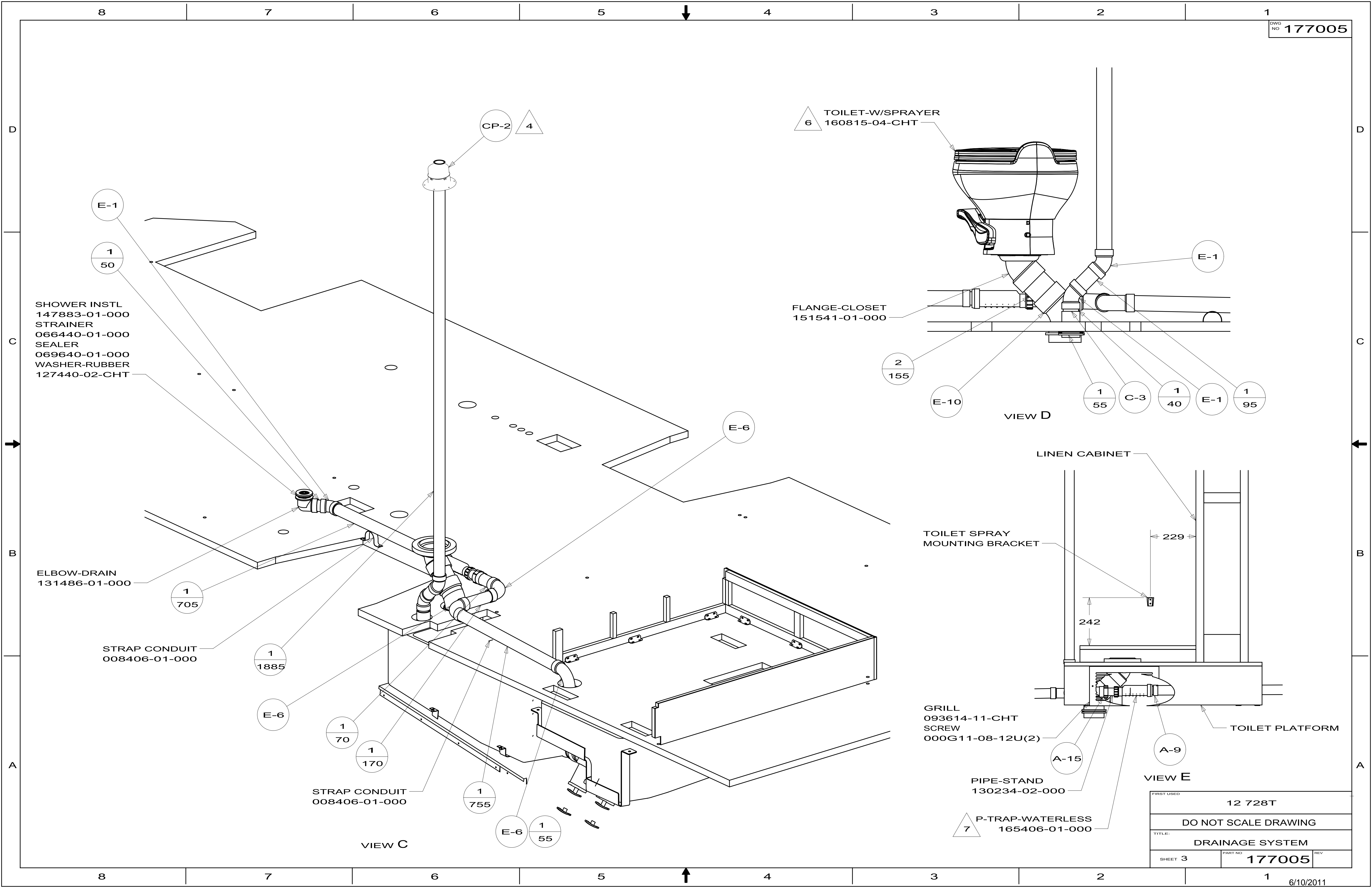


VIEW A



VIEW B

FIRST USED	12 728T	
TITLE:	DO NOT SCALE DRAWING	
	DRAINAGE SYSTEM	
SHEET 2	PART NO 177005	REV



SHOWER INSTL
147883-01-000
STRAINER
066440-01-000
SEALER
069640-01-000
WASHER-RUBBER
127440-02-CHT

ELBOW-DRAIN
131486-01-000

STRAP CONDUIT
008406-01-000

STRAP CONDUIT
008406-01-000

TOILET-W/SPRAYER
160815-04-CHT

FLANGE-CLOSET
151541-01-000

LINEN CABINET

TOILET SPRAY
MOUNTING BRACKET

GRILL
093614-11-CHT
SCREW
000G11-08-12U(2)

PIPE-STAND
130234-02-000

P-TRAP-WATERLESS
165406-01-000

TOILET PLATFORM

VIEW E

VIEW D

VIEW C

FIRST USED	12 728T	
TITLE:	DRAINAGE SYSTEM	
SHEET 3	PART NO 177005	REV

TANK-ANGLE
167254-01-CHT (2)
SCREW
000G39-10-12U(4)

FOAM-SUPPORT
130223-24-000

TANK-HOLDING, 40 GAL
165597-03-000

TANK-HOLDING, 29 GAL
165591-03-000

STRAP-TANK,HOLDING
166731-01-CHT
166731-02-CHT
BOLT
000C12-05-12U(2)
NUT
000D14-05-00U(2)
000D39-05-00U(2)

INSULATION-DRAINAGE COMPT
168508-01-000

PANEL-BOTTOM
165697-01-CHT
RIVET
118626-01-01A (16)

SUPPORT ASM-HOLDING TANK
167221-01-CHT

FRONT AXLE
VEHICLE

1165

1479

DATUM
(CORNER OF FLOOR)

1661

4980

4099

5077

F

N-3

C-2

2
60

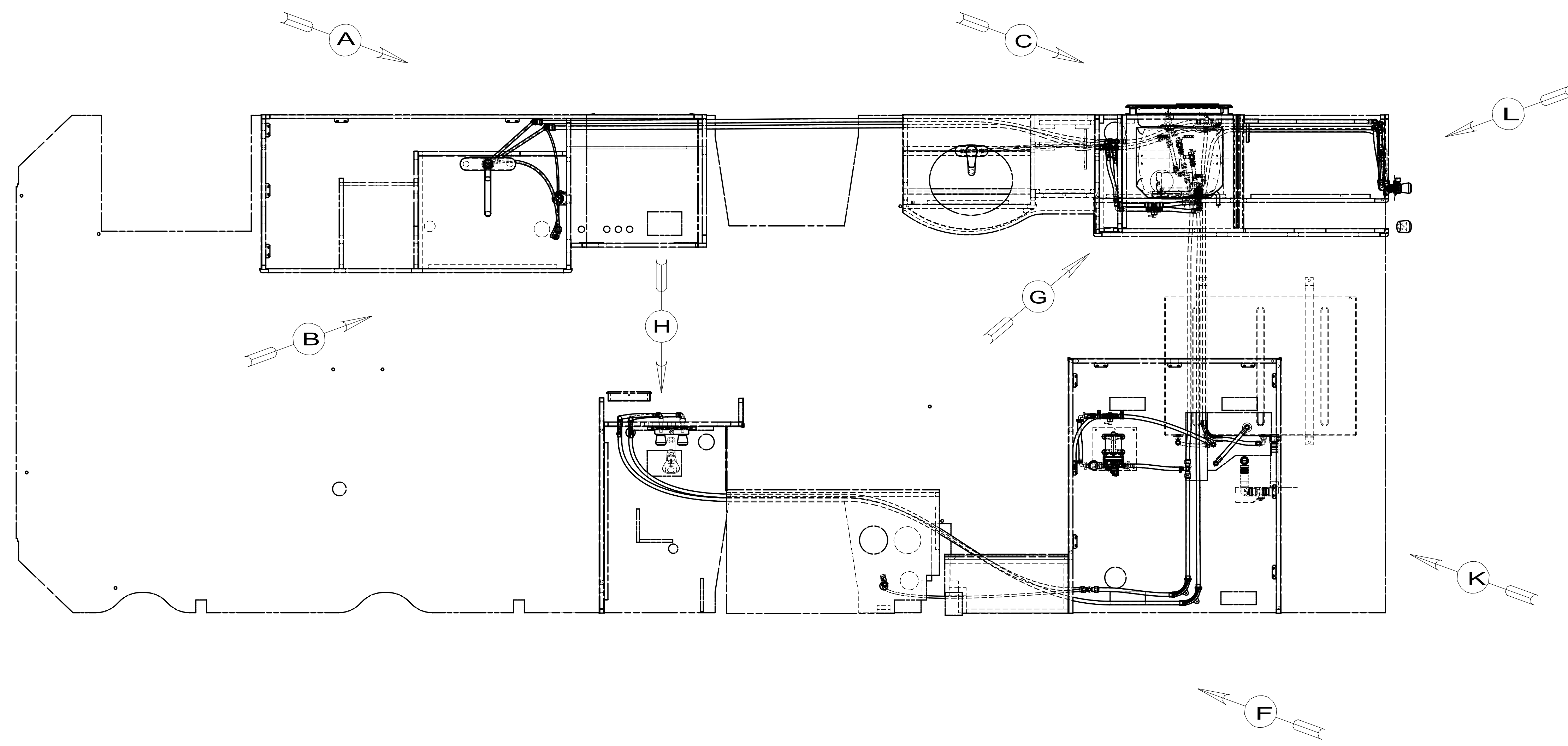
VIEW F

V-11

H-1

N-3

FIRST USED	12 728T	
TITLE:	DRAINAGE SYSTEM	
SHEET 4	PART NO 177005	REV



- 53B WTR HTR-6 GAL ELECTRIC/LP GAS
- 29B WATER PURIFIER
- 501 WATER PURIFIER-WITHOUT
- 53E WATER SYS WINTERIZATION PKG
- 64R EXTERIOR WASH STATION

- NOTES:
- 6 ADD TEFLON TAPE 010405-03-000.
 - 5 ADD TEFLON TAPE 010405-02-000.
 - 4 ADD TEFLON TAPE 010405-01-000.
 - 3. ALL TUBING TO BE SECURED AT 1200 INTERVALS MAXIMUM WITH CLAMP 010495-01-000 AND SCREW 000G67-10-12B OR EQUIVALENT.
 - 2. TUBING TO BE INSTALLED WITH SUFFICIENT SLOPE TO PROVIDE DRAINAGE TO NEAREST VALVE.
 - 1. PLASTIC FITTINGS TO BE SEALED WITH SEALANT 084456-01-000.

		COPYRIGHT 2011 WINNEBAGO INDUSTRIES, INC.
DTR	ORIG. DATE	
CHKR	ALL DIMENSIONS ARE IN MILLIMETERS	
P.E.		
M.E.	FIRST USED	
DSNR	12 728T	
UNSPECIFIED TOLERANCES ARE: WHOLE DIM (X) : 3 ONE-PLACE (X.X) : 1.5 TWO-PLACE (X.XX) : 0.50 ANGLE : 1°		MATERIAL:
THIRD ANGLE PROJECTION		
DO NOT SCALE DRAWING		REFER TO ES0018 FOR FASTENER TIGHTENING GUIDELINES
TITLE: WATER SYSTEM INSTL		
SHEET 1 OF 5	PART NO 177004	REV
REF:	1	

FOR
WATER
CALLOUTS
SEE DWG NO
116230-01-000

FAUCET-GALLEY, SGL CONTROL
149164-01-CHT

TU10
2730

501 TU-9
2630

A-26

29B TU-9
3100

501

E-38

A-26

VIEW A

R-5 500
250

A-26

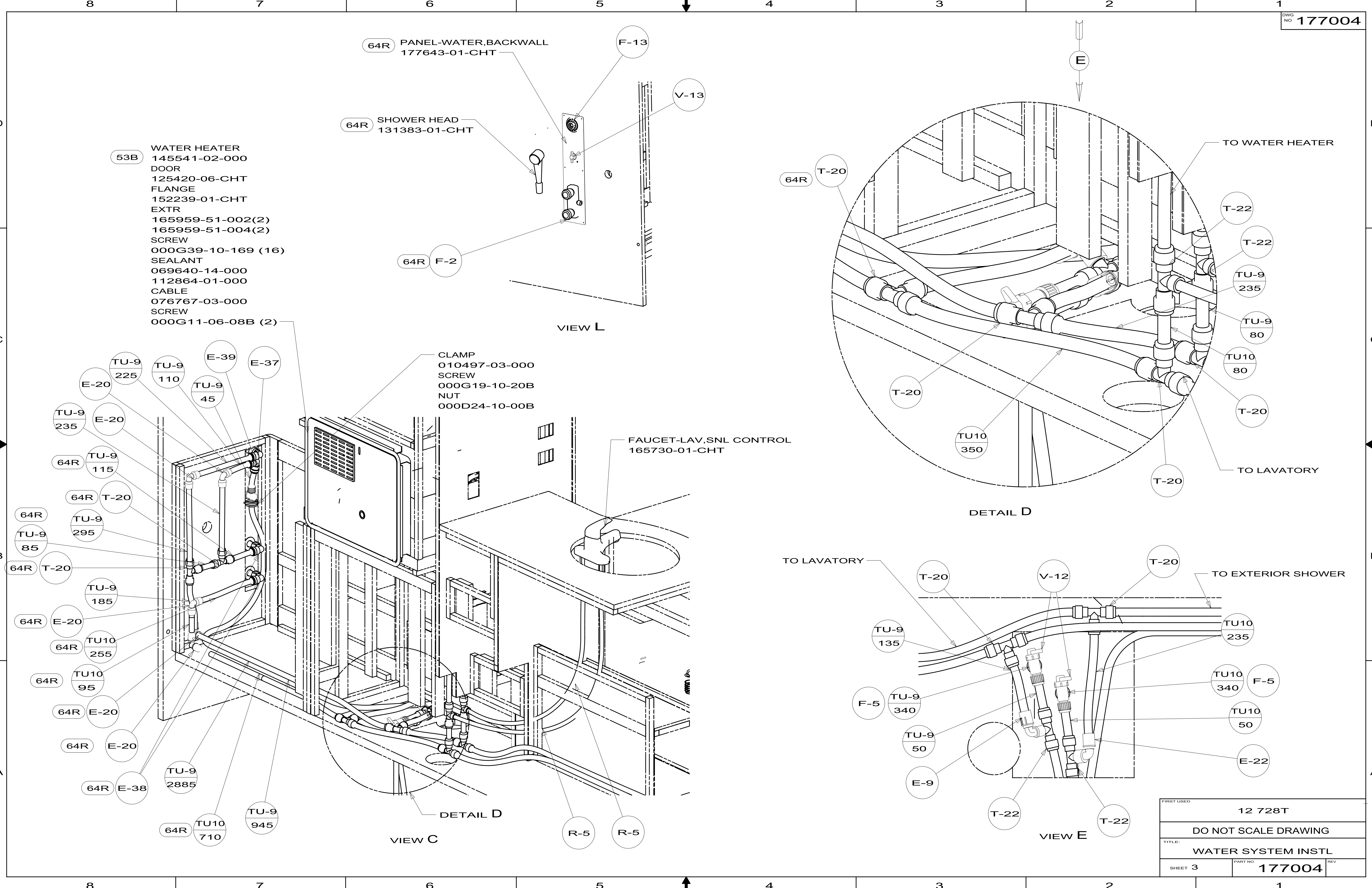
E-9

FILTER KIT-WATER,SINK
160946-03-000
SCREW
000G67-10-12U (2)

VIEW B

29B

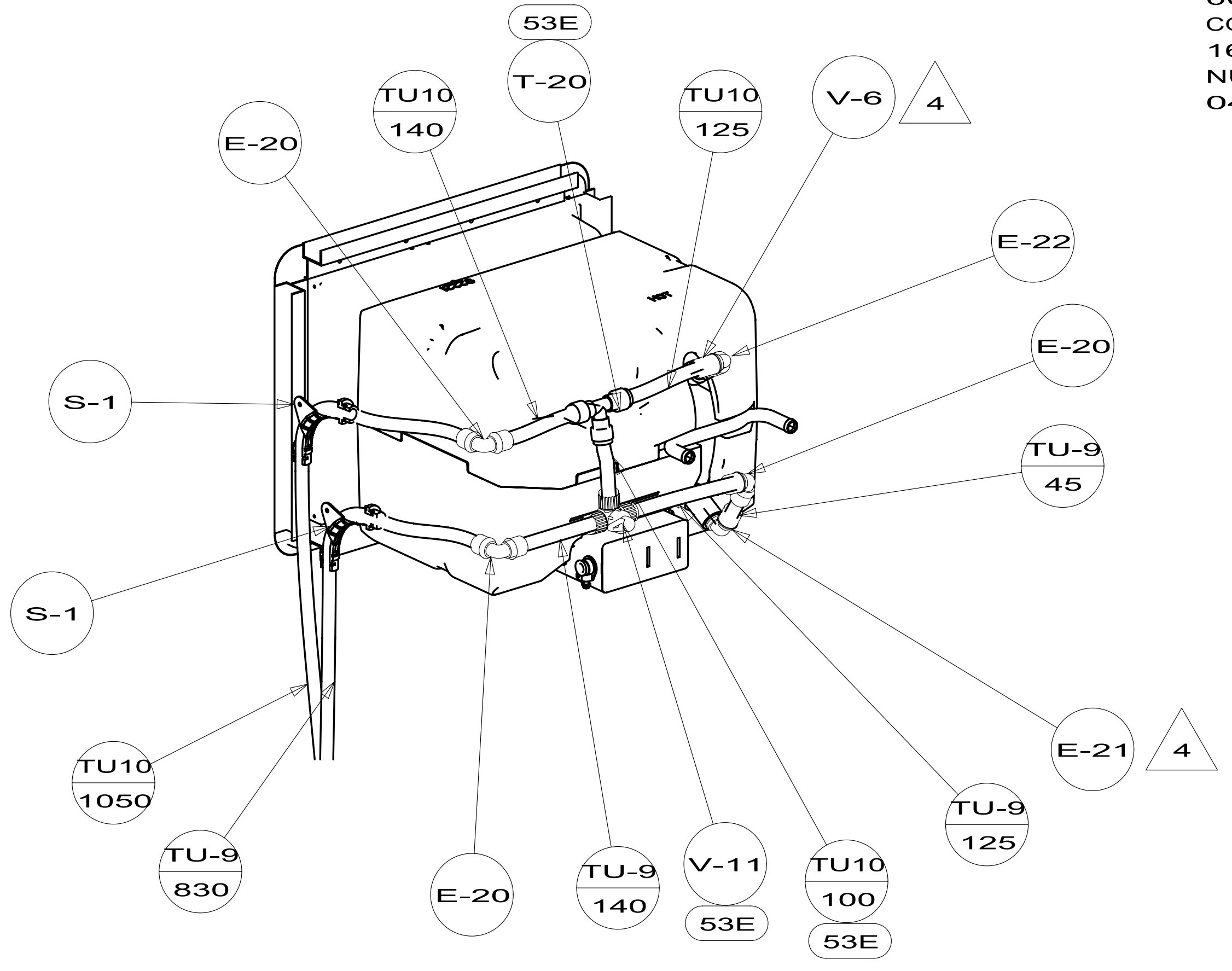
FIRST USED	12 728T		
TITLE:	DO NOT SCALE DRAWING		
	WATER SYSTEM INSTL		
SHEET 2	PART NO	177004	REV



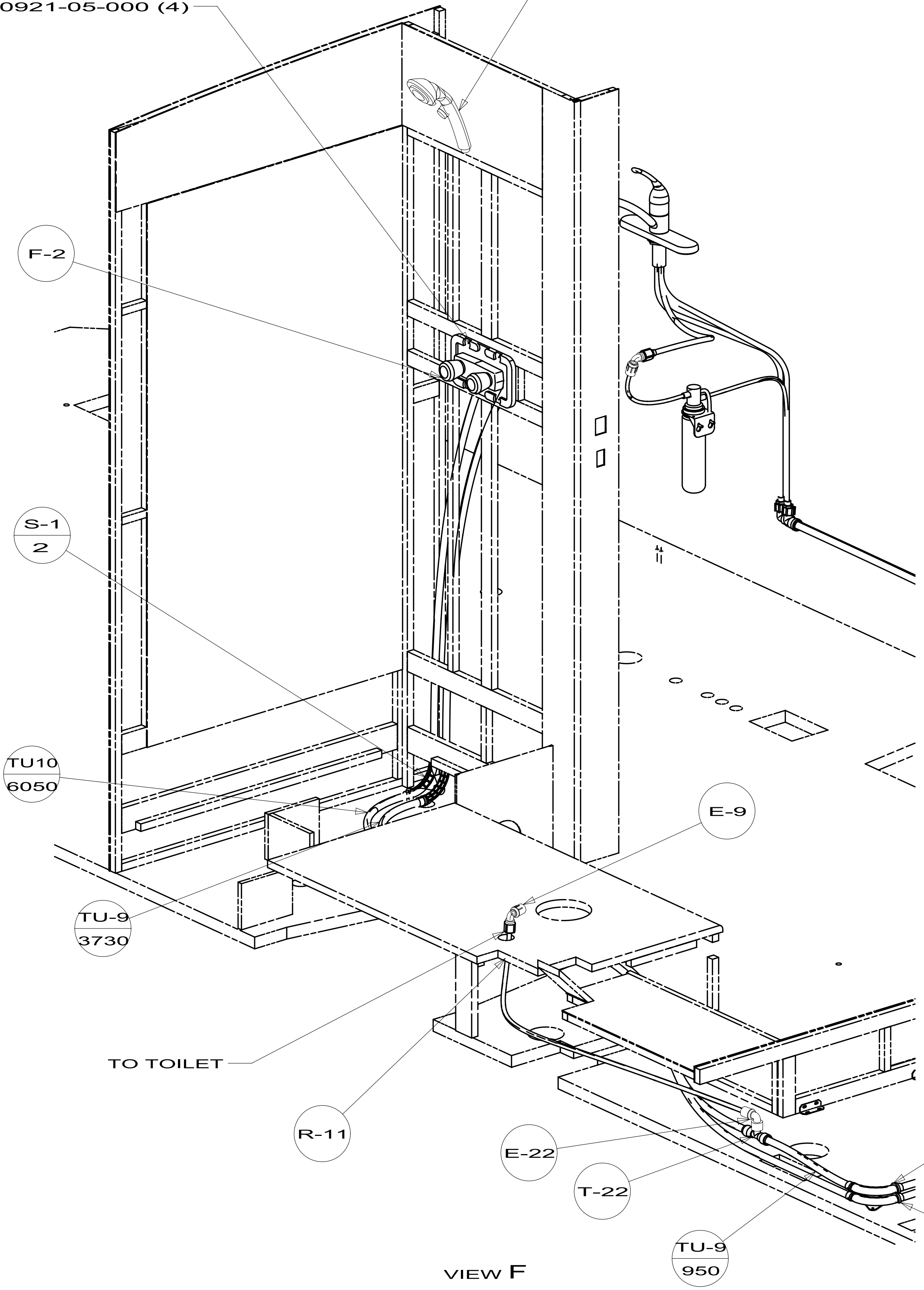
FIRST USED	12 728T
DO NOT SCALE DRAWING	
TITLE: WATER SYSTEM INSTL	
SHEET 3	PART NO 177004 REV

PANEL-SHOWER FAUCET
167738-02-CHT
SCREW
000G11-08-12U (4)
COVER
166569-01-CHT
NUT-SPEED,U
040921-05-000 (4)

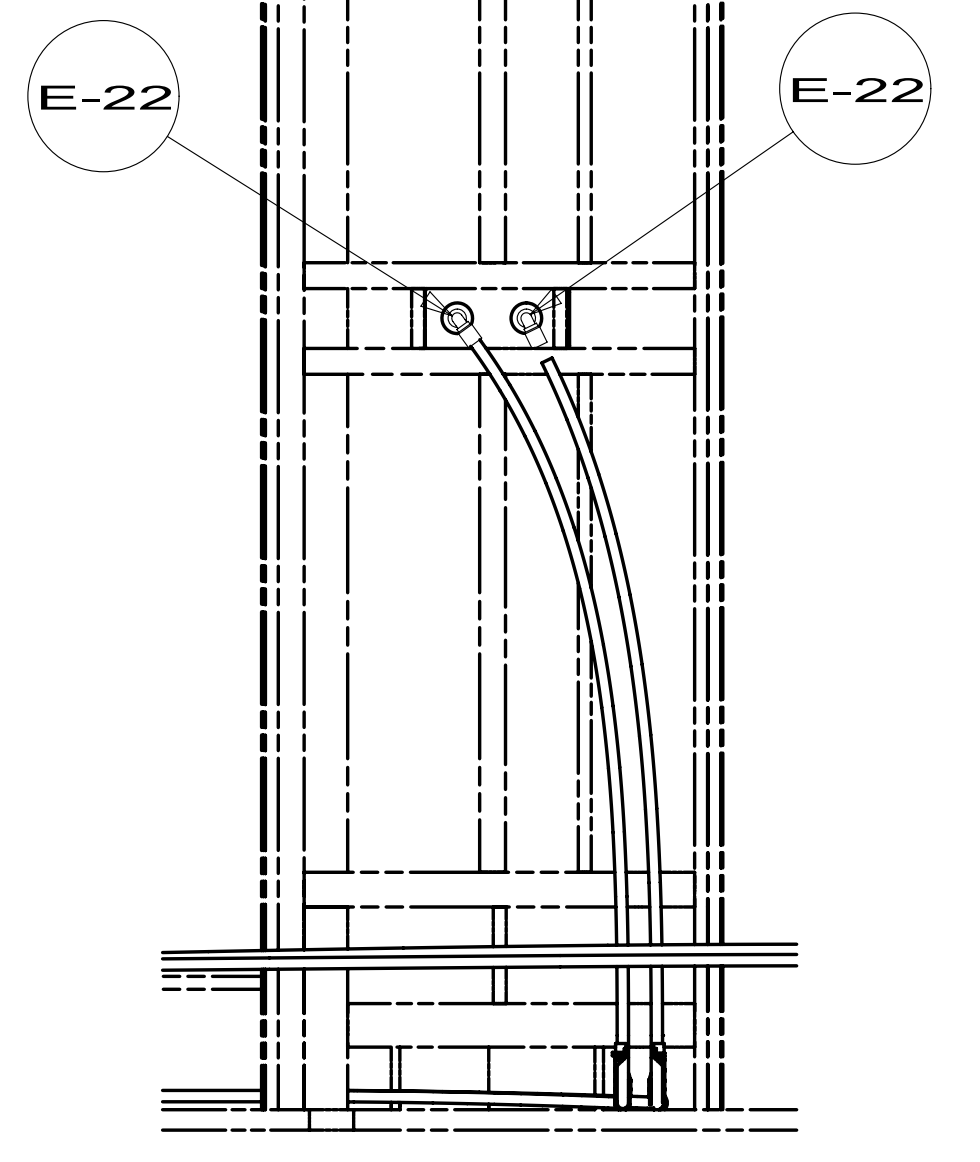
SHOWER HEAD
176668-01-CHT



VIEW G

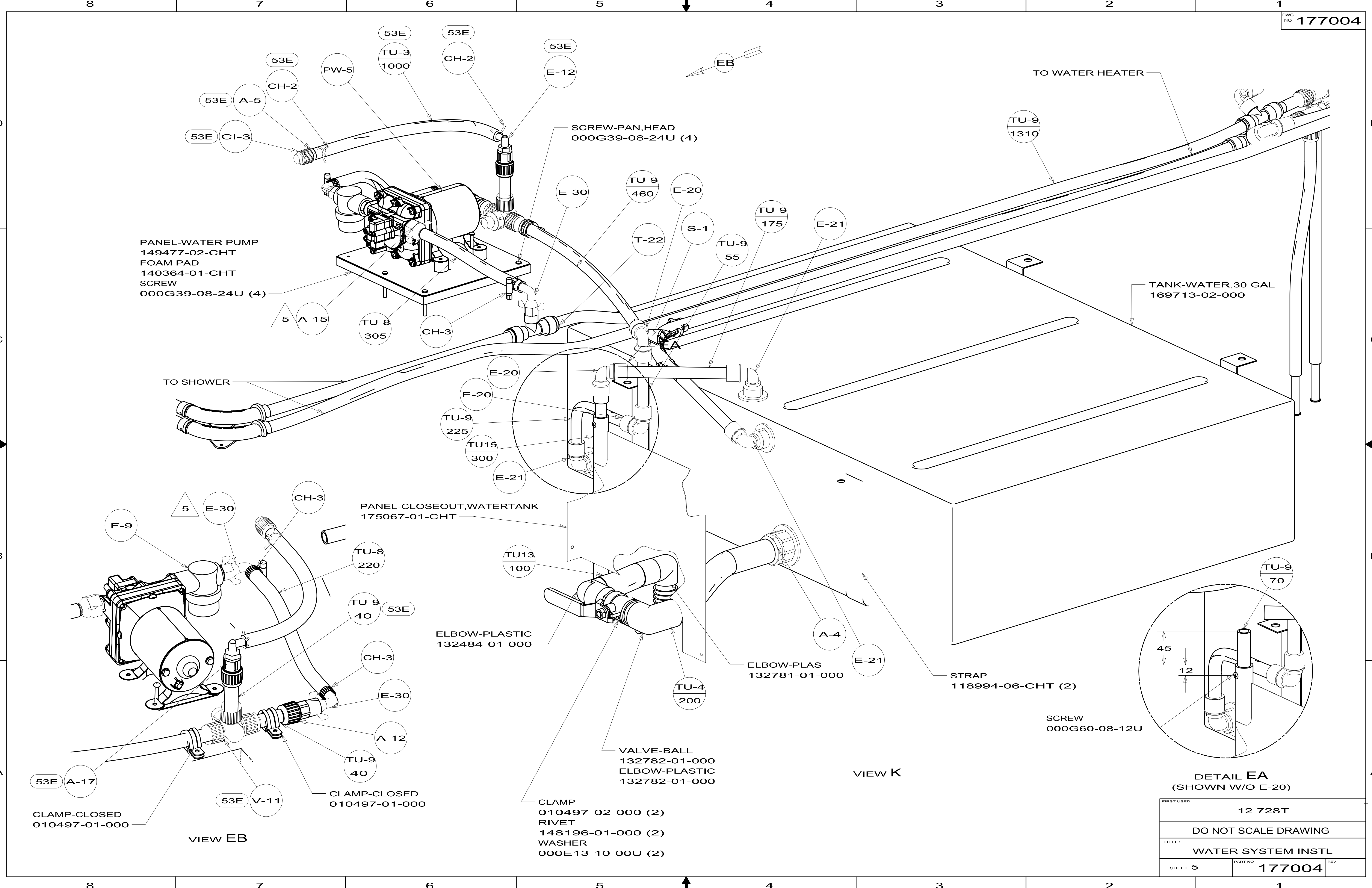


VIEW F



VIEW H

FIRST USED	12 728T
TITLE:	DO NOT SCALE DRAWING
	WATER SYSTEM INSTL
SHEET 4	PART NO 177004



PANEL-WATER PUMP
 149477-02-CHT
 FOAM PAD
 140364-01-CHT
 SCREW
 000G39-08-24U (4)

TO SHOWER

TO WATER HEATER

TANK-WATER, 30 GAL
 169713-02-000

PANEL-CLOSEOUT, WATERTANK
 175067-01-CHT

ELBOW-PLASTIC
 132484-01-000

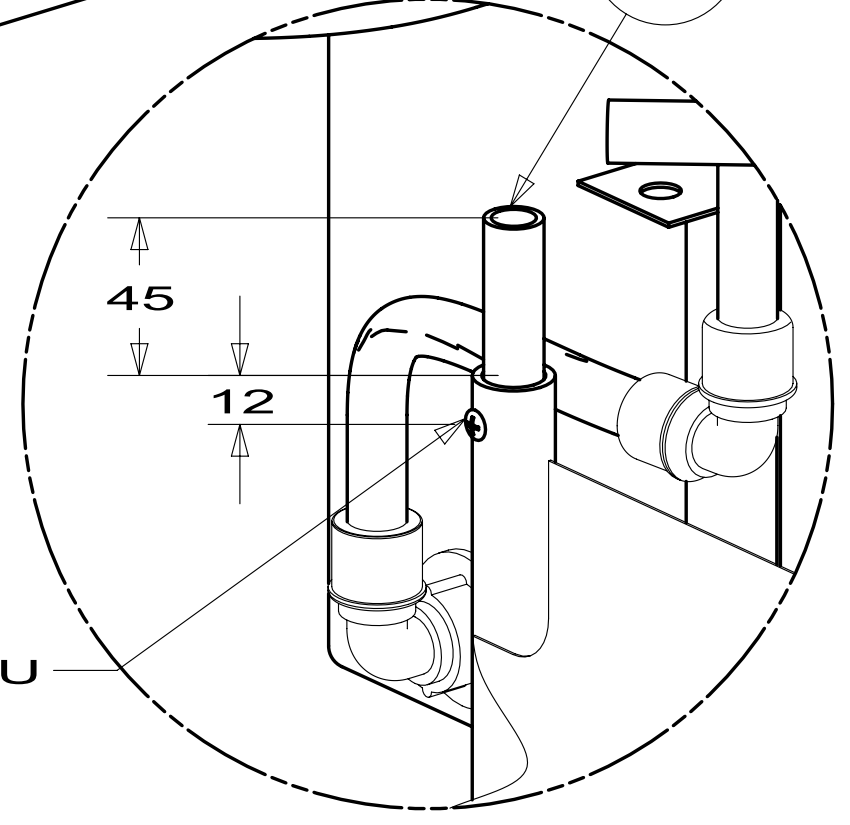
ELBOW-PLAS
 132781-01-000

VALVE-BALL
 132782-01-000
 ELBOW-PLASTIC
 132782-01-000

CLAMP
 010497-02-000 (2)
 RIVET
 148196-01-000 (2)
 WASHER
 000E13-10-00U (2)

STRAP
 118994-06-CHT (2)

SCREW
 000G60-08-12U



DETAIL EA
 (SHOWN W/O E-20)

FIRST USED	12 728T	
TITLE:	DO NOT SCALE DRAWING	
	WATER SYSTEM INSTL	
SHEET 5	PART NO	177004
	REV	