

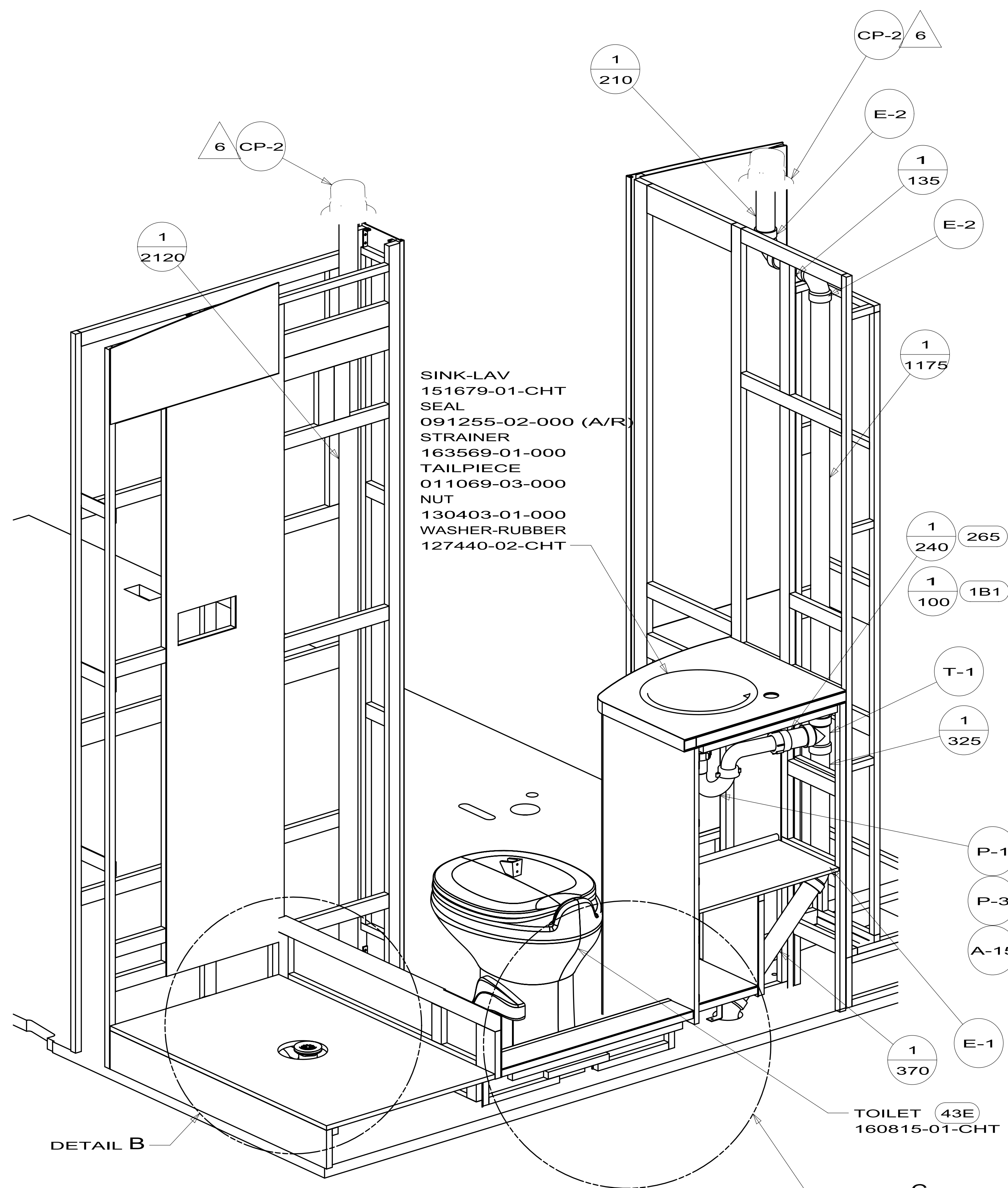
- 1B1 CODES/STANDARDS-USA
- 265 CODES/STANDARDS-CSA/CMVSS
- 43E TOILET-PORCELAIN
- 1JD DRAINAGE SYSTEM-HEATED-W/O
- 23T DRAINAGE SYSTEM-HEATED

9. PREPARE THE SURFACE PER MANUFACTURERS INSTRUCTIONS. BEFORE APPLYING THE HEAT PADS.
8. USE SMOOTH PLUMBERS PUTTY 167459-01-000 TO SEAL STRAINER (.2 PER STRAINER).
7. SECURE VENT PIPE TO FLOOR WITH CLAMP 062401-02-000 (2), SCREW 000G67-10-12U (2), BRACKET 136878-01-CHT (2).
6. VENT PIPE MUST PROJECT 51 MIN AND 64 MAX ABOVE ROOF FOR PROPER FIT AND FUNCTION. ADD S-1 (116666-01-CHT SEAL-VENT PIPE) AROUND PIPE ON ROOF BEFORE VENT CAP IS INSTALLED.
5. SEAL AROUND SHOWER WITH SILICONE.
4. SECURE DRAINAGE PIPES TO CABINET USING WIRE TIES 108046-02-000 AND SCREW 000G67-10-12U AT INTERVALS OF NOT MORE THAN 4 FEET APART.
3. ALL PIPE AND FITTINGS TO BE ASSEMBLED WITH SOLVENT 004020-01-000 (USA), 004020-02-000 (CAN)
2. SLOPE OF TRAP ARM MUST BE 6 PER 305 mm.
1. SLOPE OF HORIZONTAL PIPING TO BE MINIMUM OF 3 PER 305 mm.

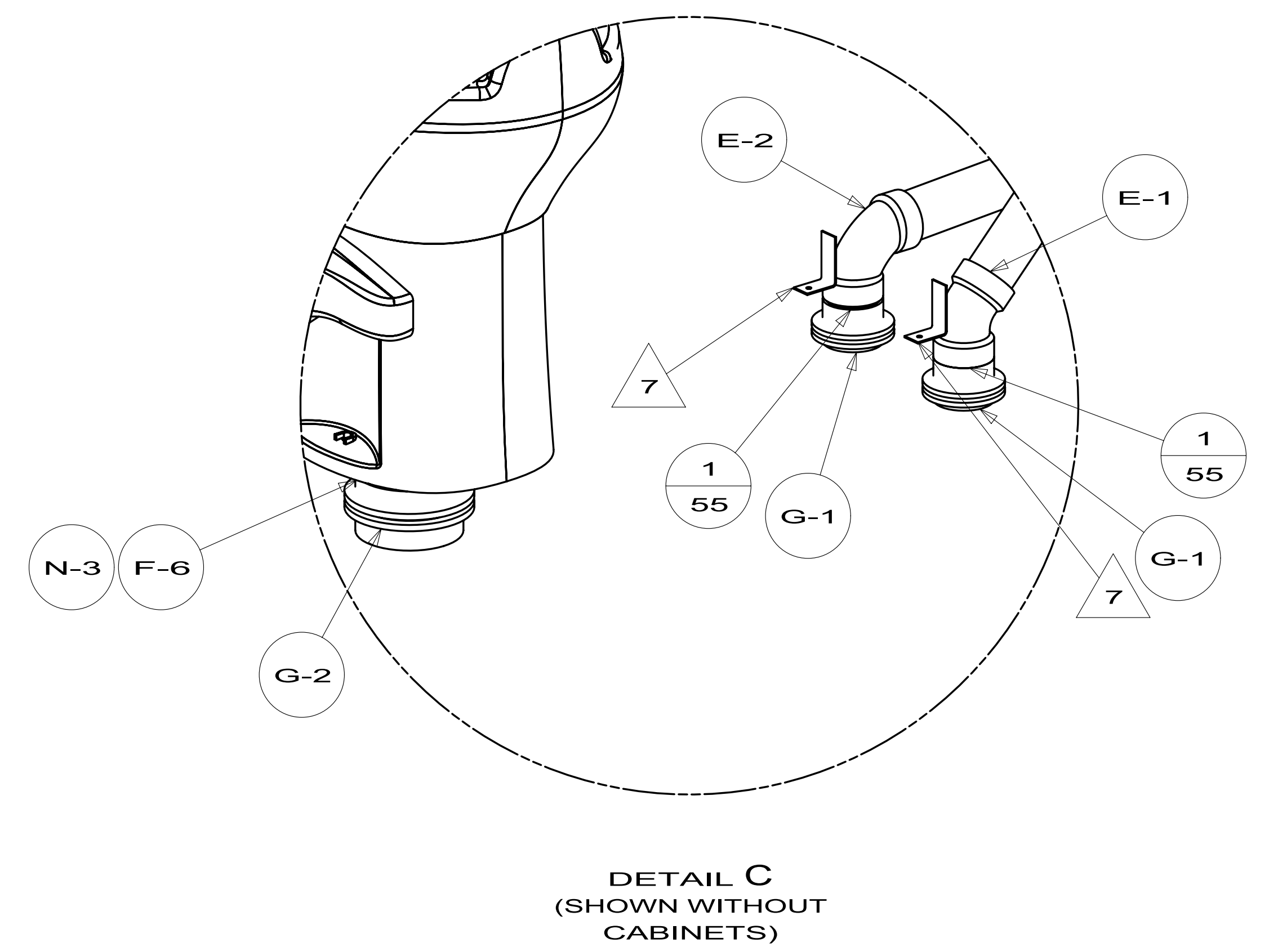
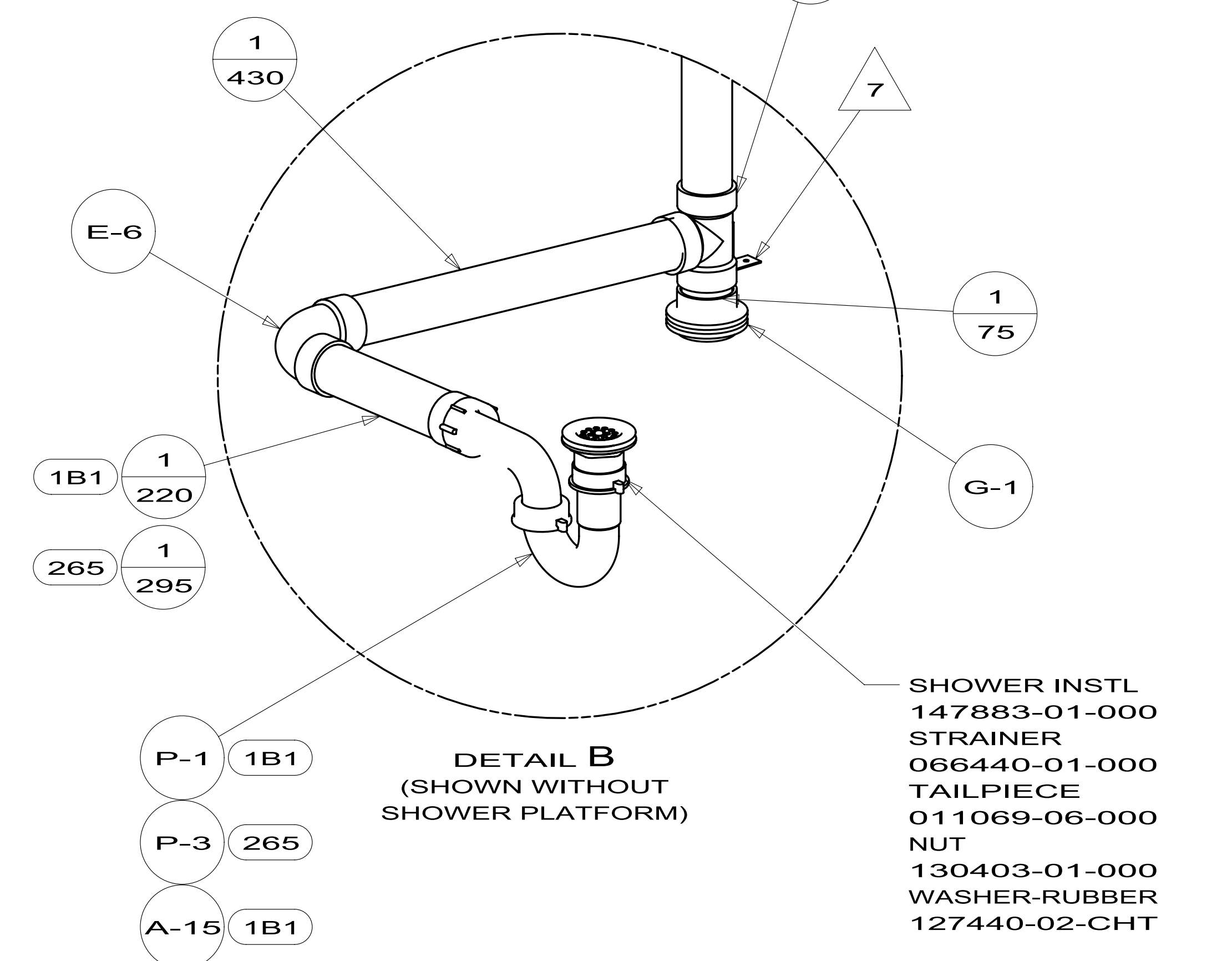
NOTES:

FOR DRAINAGE CALLOUTS SEE DWG NO 116229-01-000

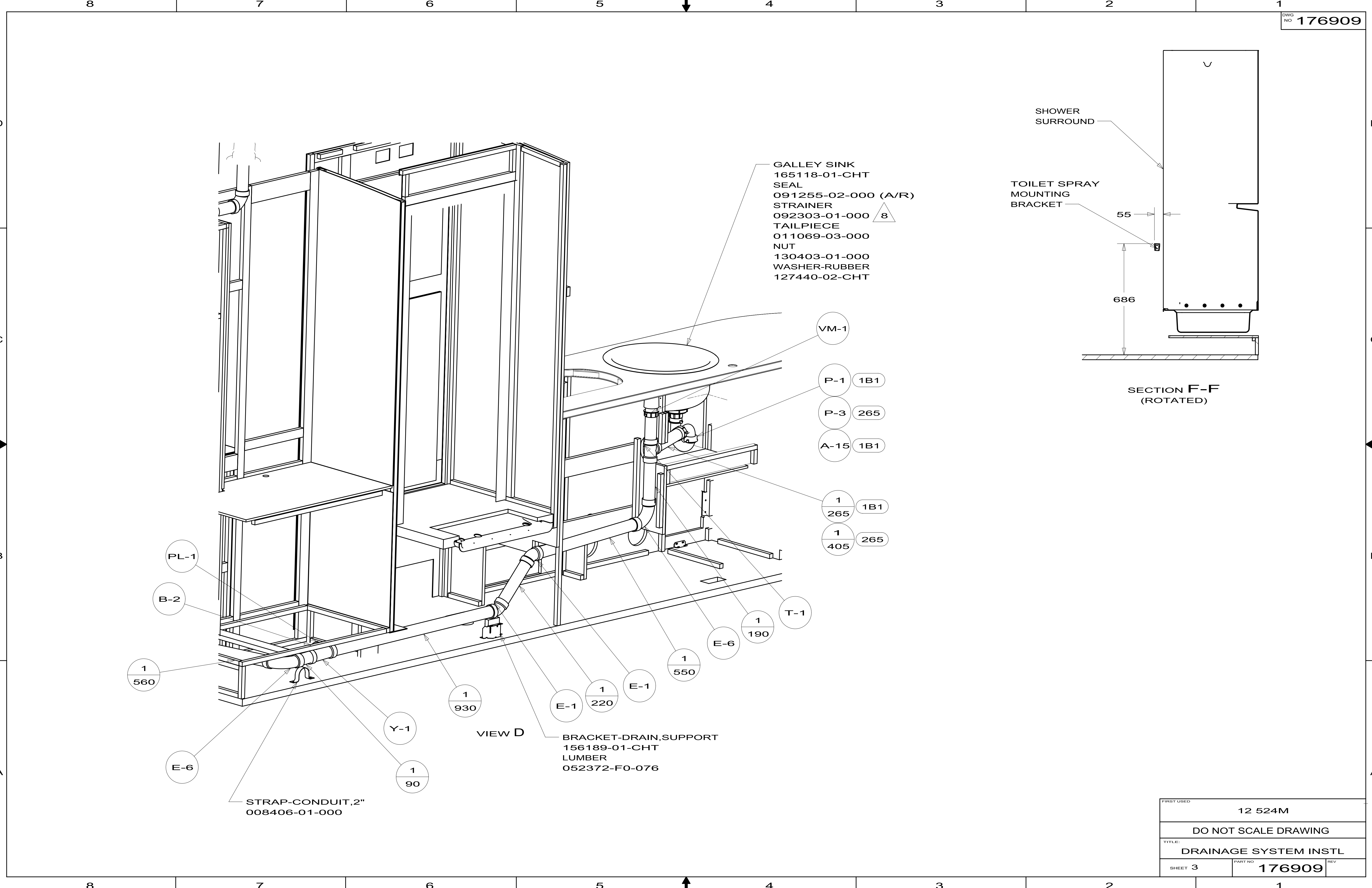
WINNEBAGO INDUSTRIES		COPYRIGHT 2011 WINNEBAGO INDUSTRIES, INC.	
DTR	ORIG. DATE	ALL DIMENSIONS ARE IN MILLIMETERS	
CHKR			
P.E.			
M.E.	FIRST USED	12 524M	
DSNR			
UNSPECIFIED TOLERANCES ARE:		MATERIAL:	
WHOLE DIM (X)	: 3		
ONE-PLACE (X.X)	: 1.5		
TWO-PLACE (X.XX)	: 0.50		
ANGLE	: 1°		
THIRD ANGLE PROJECTION			
DO NOT SCALE DRAWING		REFER TO ES0018 FOR FASTENER TIGHTENING GUIDELINES	
TITLE: DRAINAGE SYSTEM INSTL			
SHEET 1 OF 4	PART NO	176909	REV
REF:	1	10/28/2011	



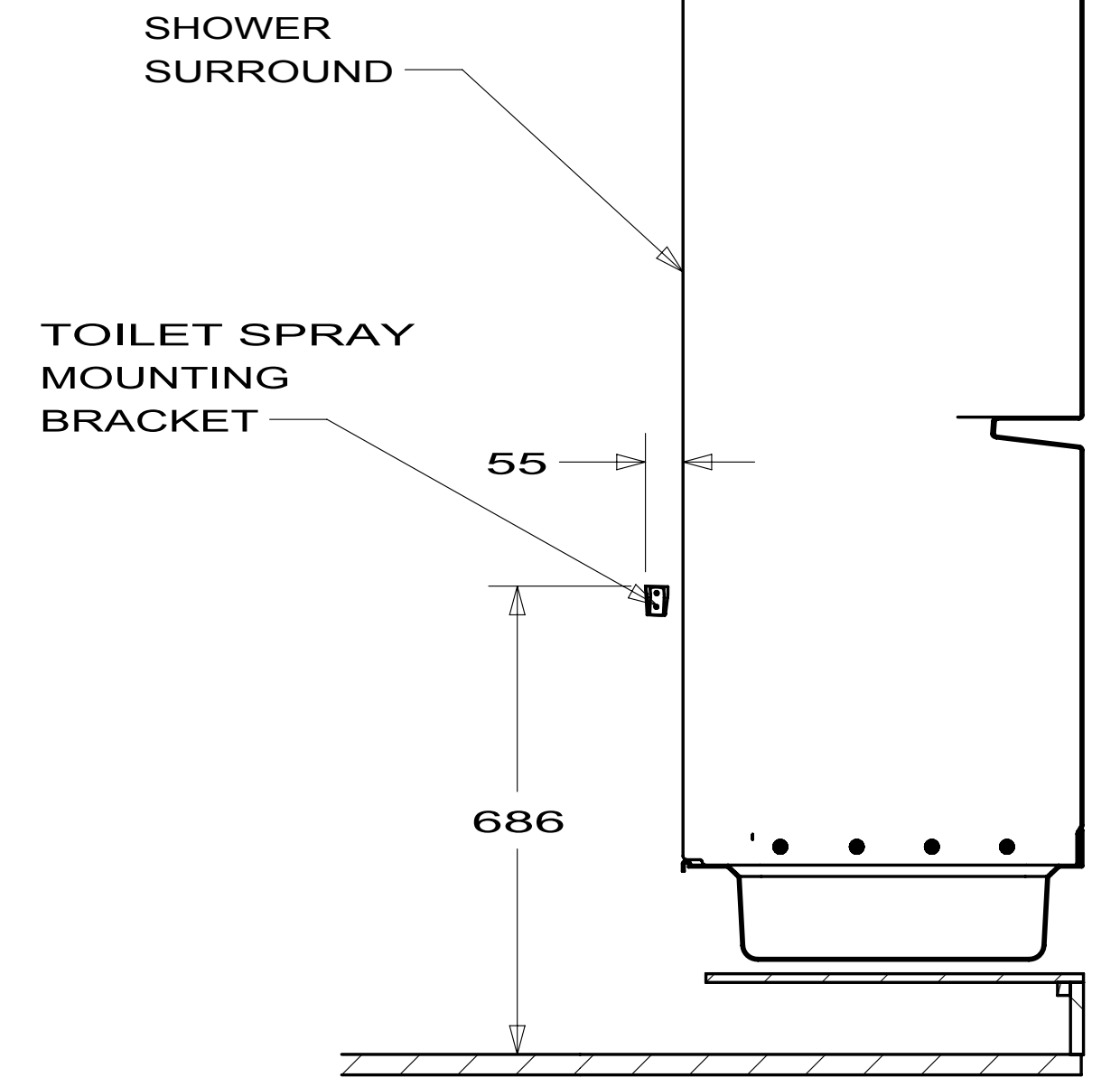
- SINK-LAV
151679-01-CHT
SEAL
091255-02-000 (A/R)
STRAINER
163569-01-000
TAILPIECE
011069-03-000
NUT
130403-01-000
WASHER-RUBBER
127440-02-CHT



FIRST USED	12 524M	
DO NOT SCALE DRAWING		
TITLE: DRAINAGE SYSTEM INSTL		
SHEET 2	PART NO 176909	REV



- GALLEY SINK
165118-01-CHT
- SEAL
091255-02-000 (A/R)
- STRAINER
092303-01-000 Δ 8
- TAILPIECE
011069-03-000
- NUT
130403-01-000
- WASHER-RUBBER
127440-02-CHT



SECTION F-F
(ROTATED)

- VM-1
- P-1 1B1
- P-3 265
- A-15 1B1
- 1 265 1B1
- 1 405 265

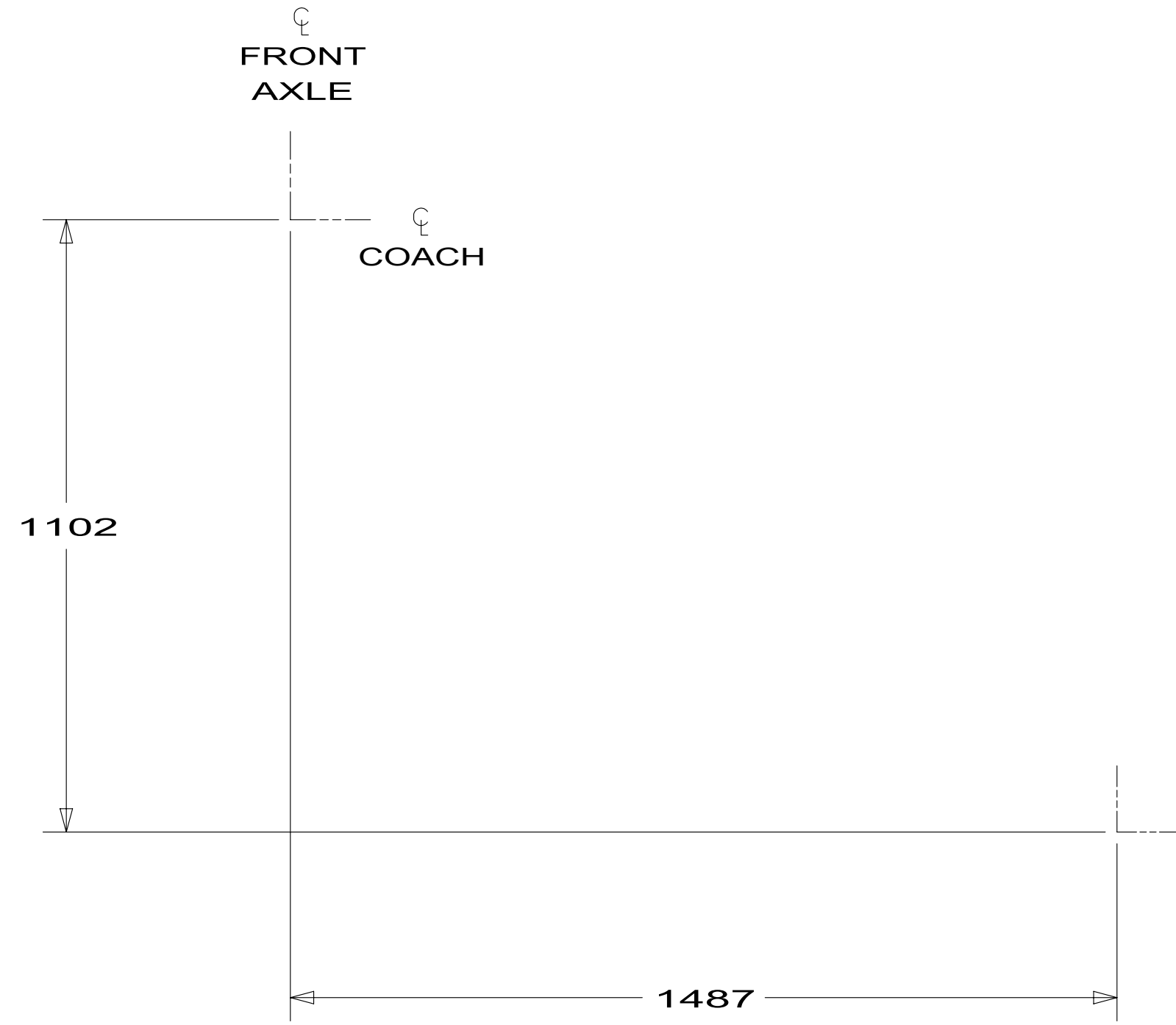
- PL-1
- B-2
- 1 560
- E-6
- Y-1
- 1 90

VIEW D
BRACKET-DRAIN,SUPPORT
156189-01-CHT
LUMBER
052372-F0-076

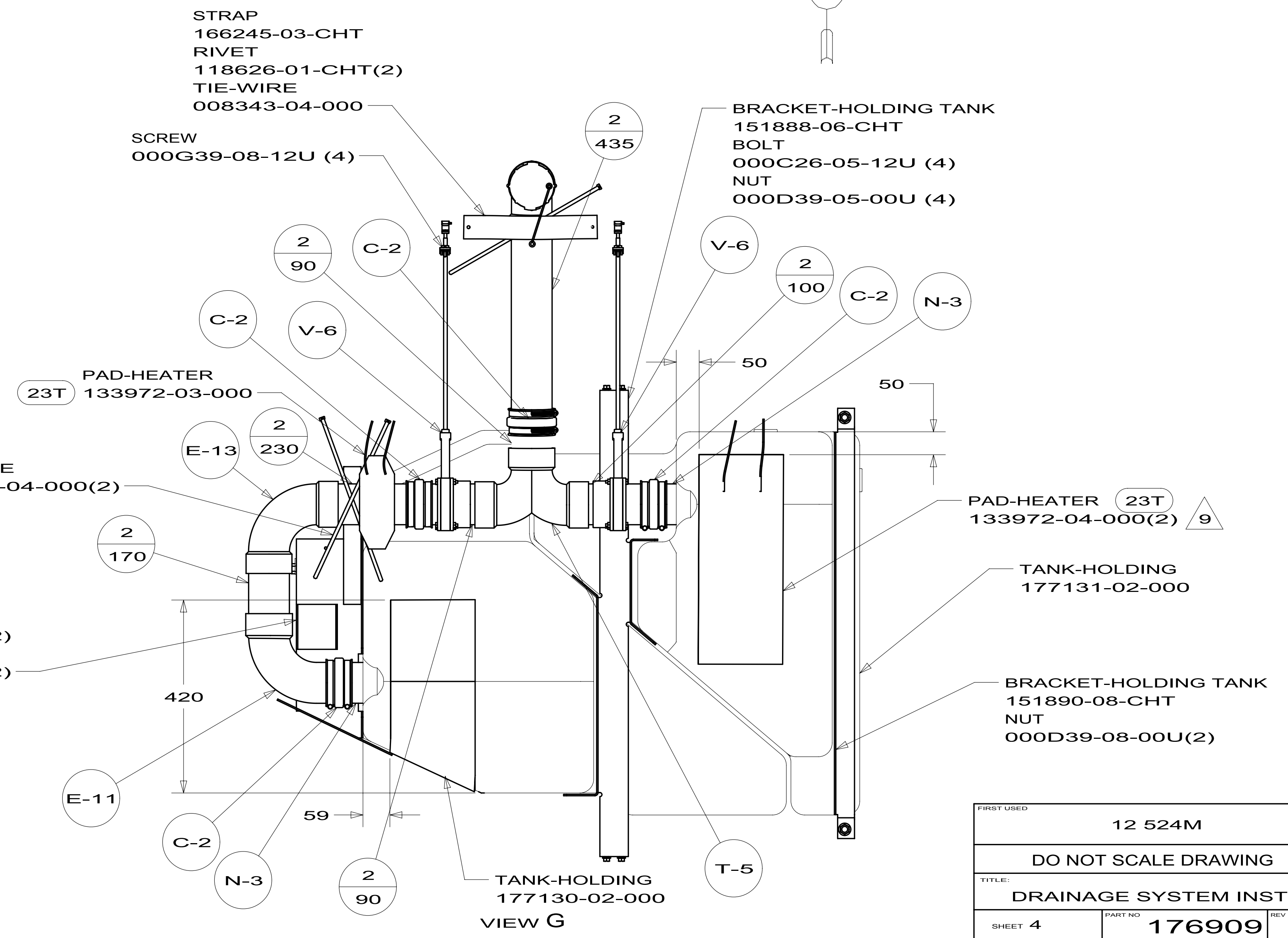
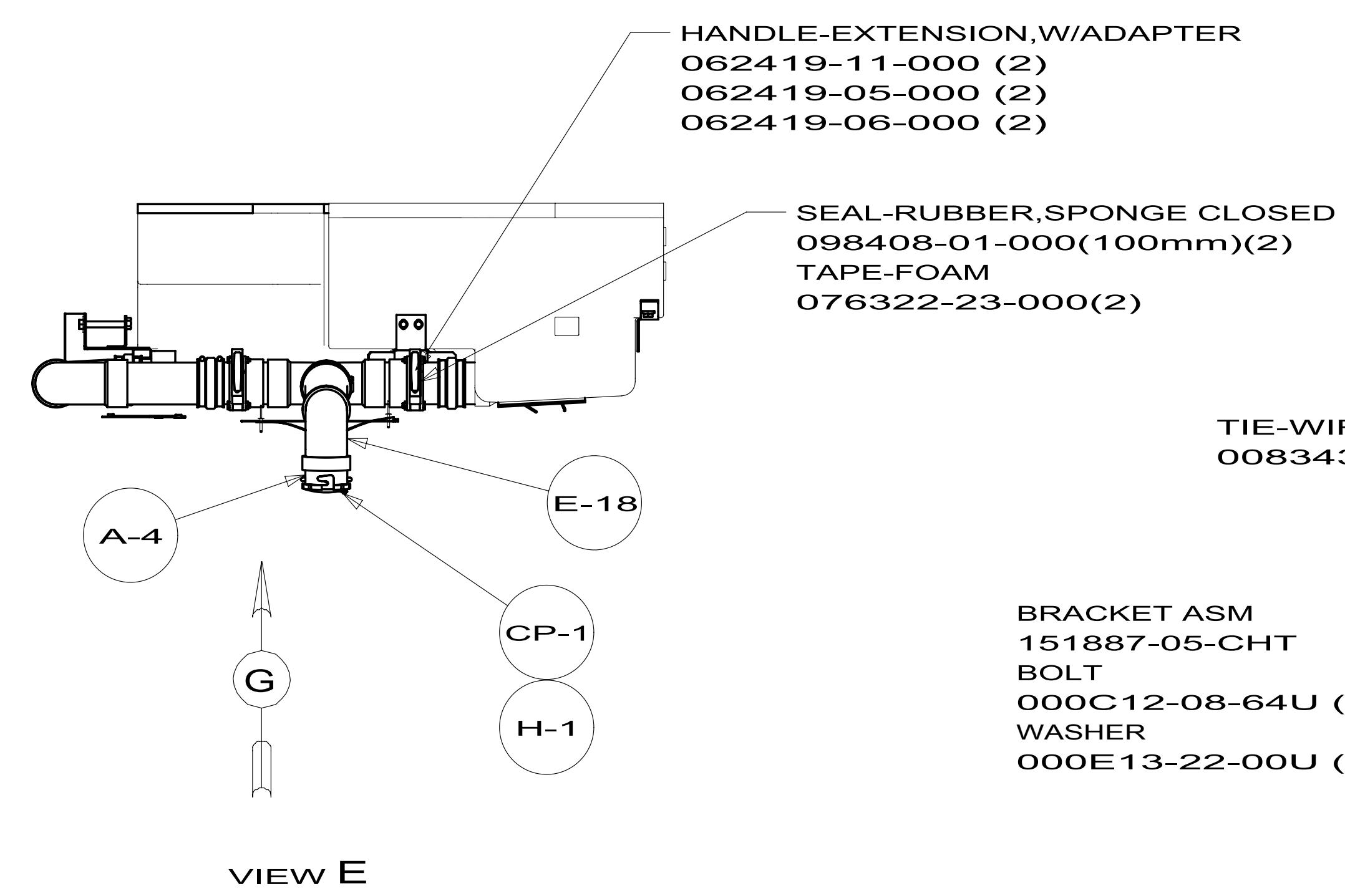
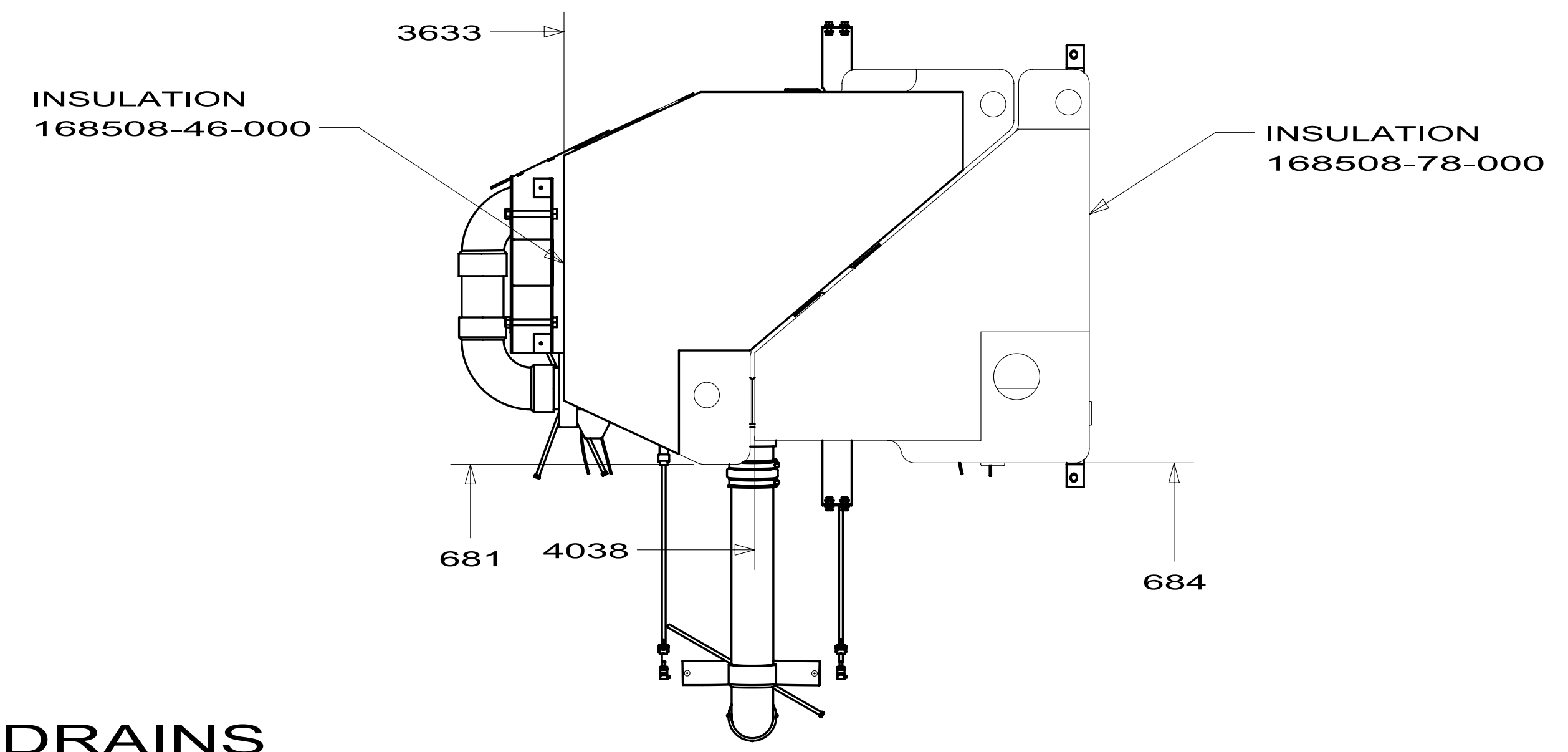
- 1 190 T-1
- E-6
- 1 550
- E-1
- 1 220
- 1 930

STRAP-CONDUIT,2"
008406-01-000

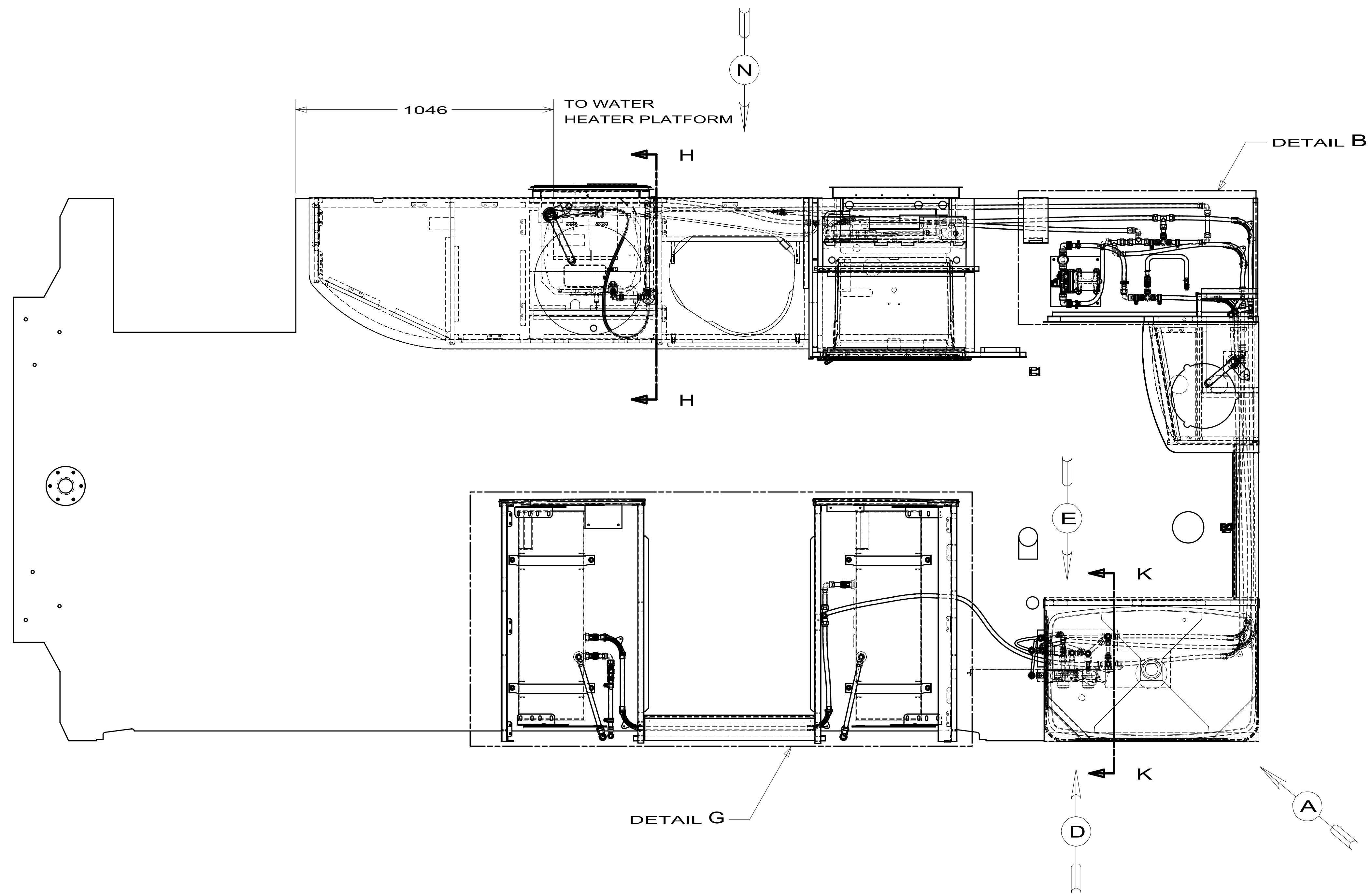
FIRST USED	12 524M	
DO NOT SCALE DRAWING		
TITLE: DRAINAGE SYSTEM INSTL		
SHEET 3	PART NO 176909	REV



VIEW SHOWING TANKS AND DRAINS



FIRST USED	12 524M	
DO NOT SCALE DRAWING		
TITLE: DRAINAGE SYSTEM INSTL		
SHEET 4	PART NO 176909	REV



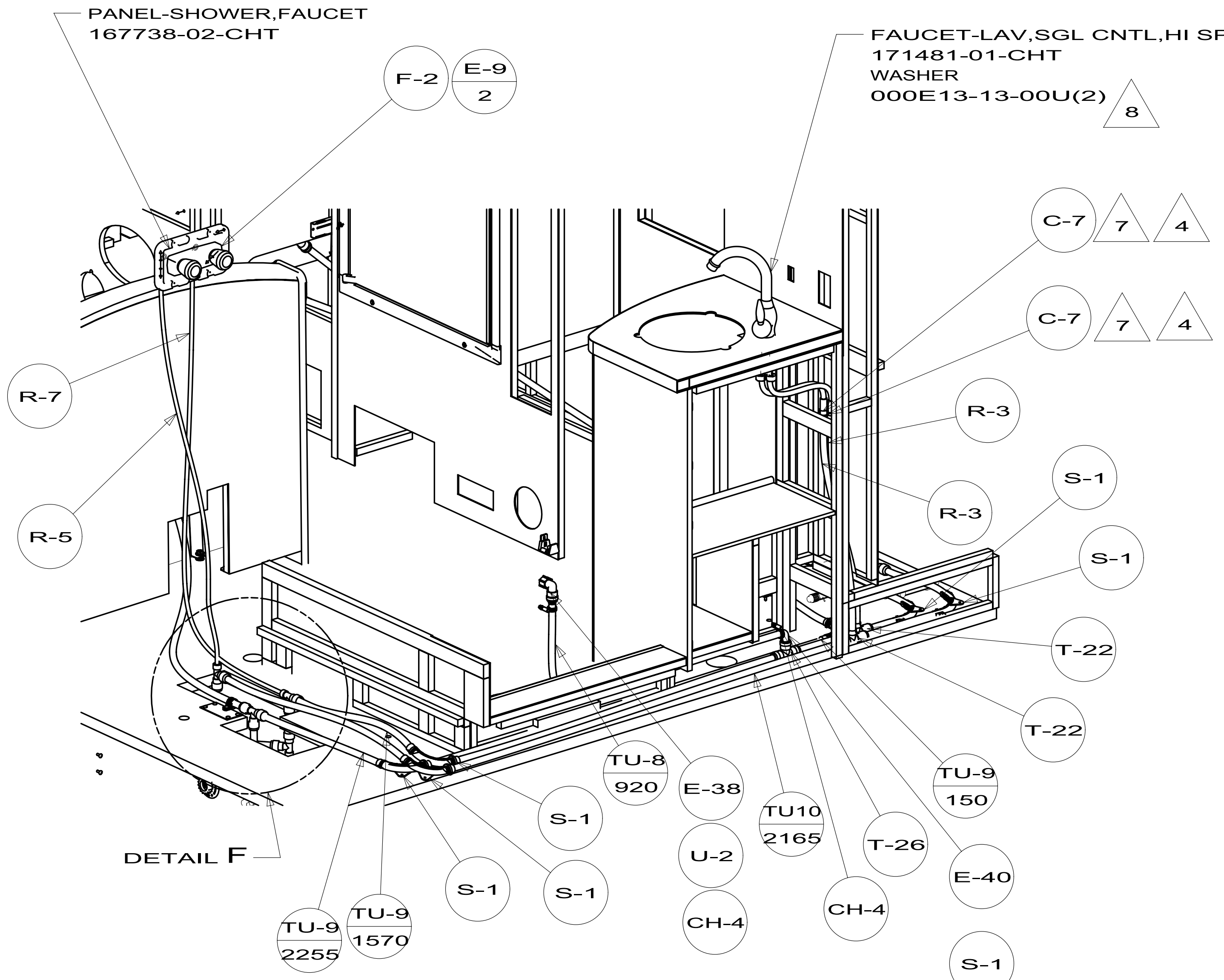
- 29B WATER PURIFIER
- 501 WATER PURIFIER W/O
- 53E WINTERIZING PKG
- 53F WATER HEATER-ELEC. IGN.
- 53B WTR HTR-6GAL ELECTRIC/LP GAS
- 64R EXT WASH STATION
- 1J4 EXT WASH STATION W/O

- 9 LAVATORY FAUCET SPOUT TO BE TURNED 180° SO CONTROLS ARE ON LEFT SIDE.
 - 8 INSTALL BETWEEN MOUNTING PLATE AND RETAINING NUTS.
 - 7 INSTALL CONNECTOR WITH TAPERED END AWAY FROM FAUCET.
 - 6 ADD TEFLON TAPE 010405-03-000.
 - 5 ADD TEFLON TAPE 010405-02-000.
 - 4 ADD TEFLON TAPE 010405-01-000.
3. ALL TUBING TO BE SECURED AT 1200 INTERVALS MAXIMUM WITH CLAMP 010495-01-000 AND SCREW 000G67-10-12B OR EQUIVALENT.
2. TUBING TO BE INSTALLED WITH SUFFICIENT SLOPE TO PROVIDE DRAINAGE TO NEAREST VALVE.
1. PLASTIC FITTINGS TO BE SEALED WITH SEALANT 084456-01-000.

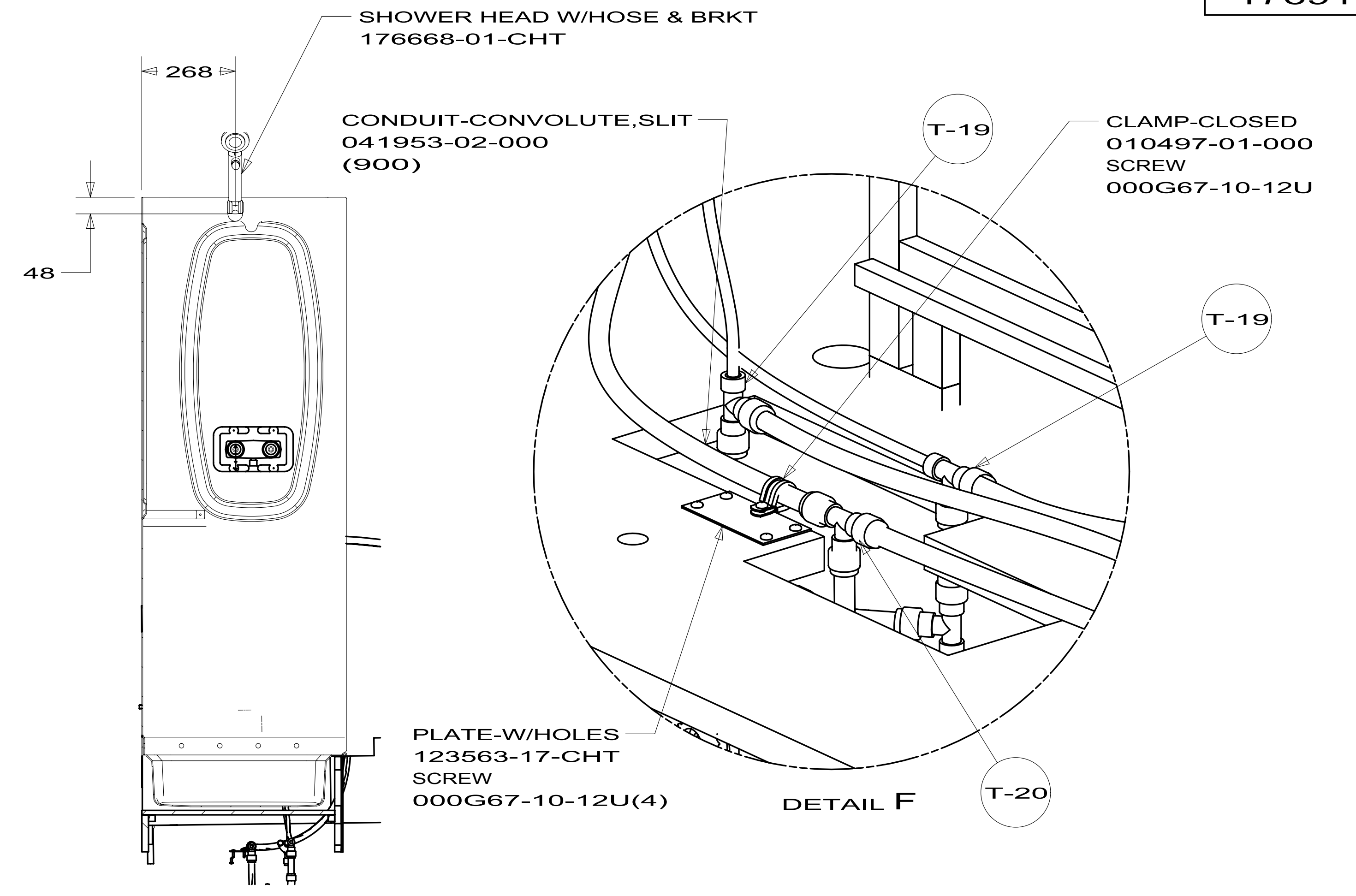
10 TURN FAUCET APPROXIMATELY 15° SO THAT THE HANDLE MISSES THE WINDOW TREATMENTS.

FOR WATER CALLOUTS SEE DWG NO 116230-01-000

		COPYRIGHT 2011 WINNEBAGO INDUSTRIES, INC.
DTR	ORIG. DATE	
CHKR	ALL DIMENSIONS ARE IN MILLIMETERS	
P.E.		
M.E.	FIRST USED	
DSNR	12 524M	
UNSPECIFIED TOLERANCES ARE: WHOLE DIM (X) : 3 ONE-PLACE (X.X) : 1.5 TWO-PLACE (X.XX) : 0.50 ANGLE : 1°		MATERIAL:
THIRD ANGLE PROJECTION		
DO NOT SCALE DRAWING		REFER TO ES0018 FOR FASTENER TIGHTENING GUIDELINES
TITLE: WATER SYSTEM INSTL		
SHEET 1 OF 4	PART NO 176916	REV
REF: 1		10/12/2011



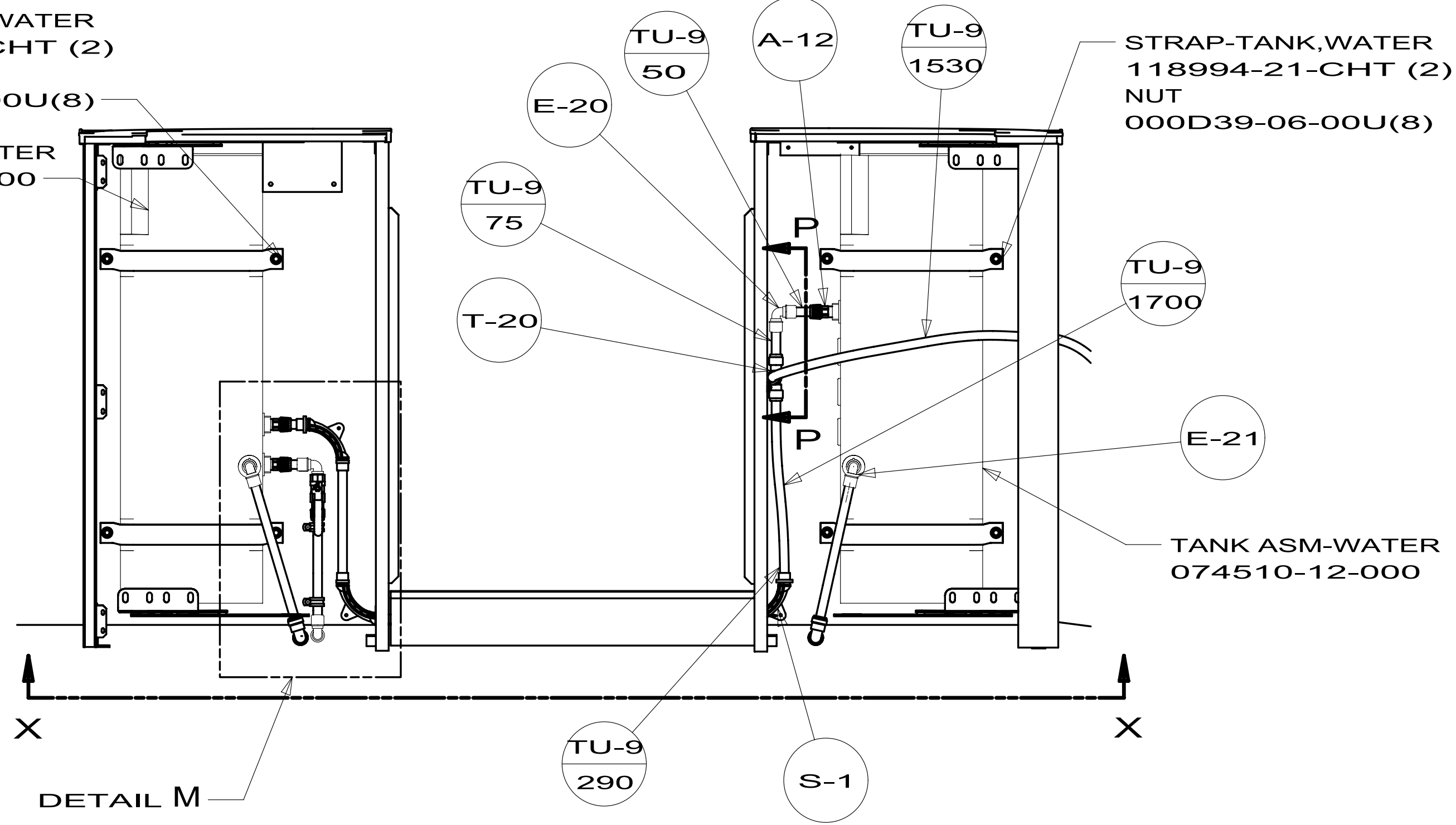
VIEW A



SECTION K-K

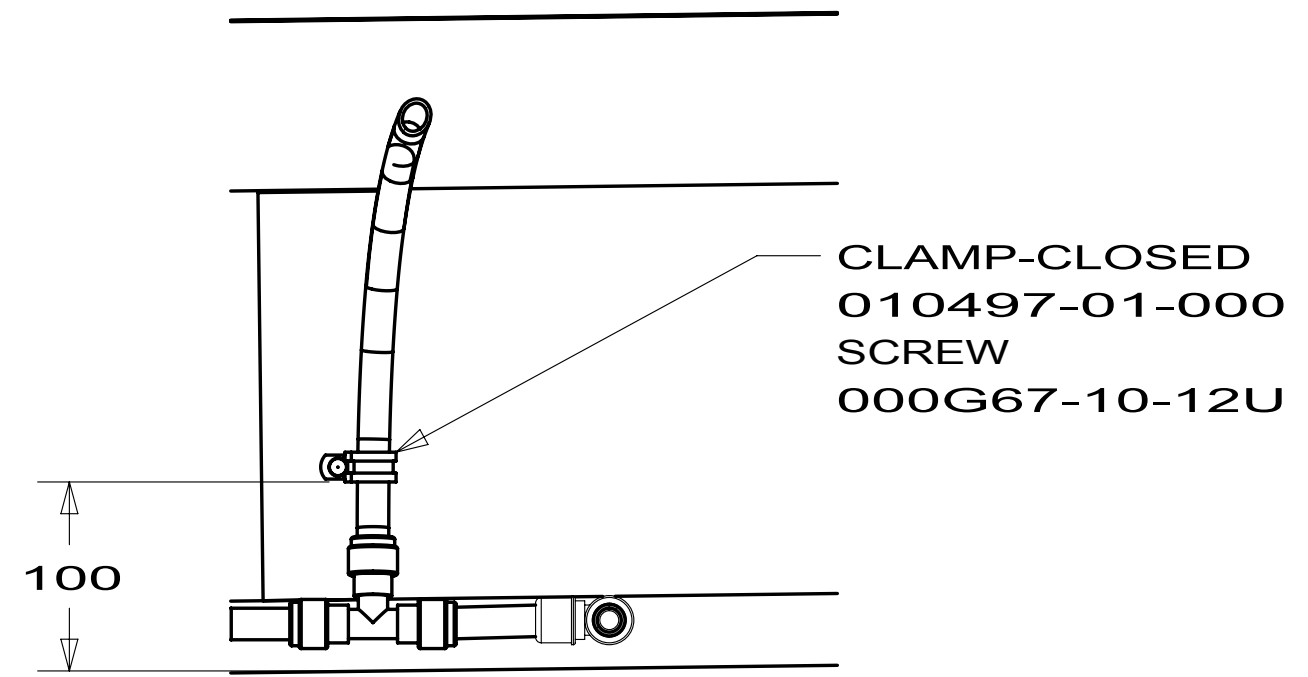
STRAP-TANK, WATER
118994-21-CHT (2)
NUT
000D39-06-00U(8)

TANK ASM-WATER
074510-11-000

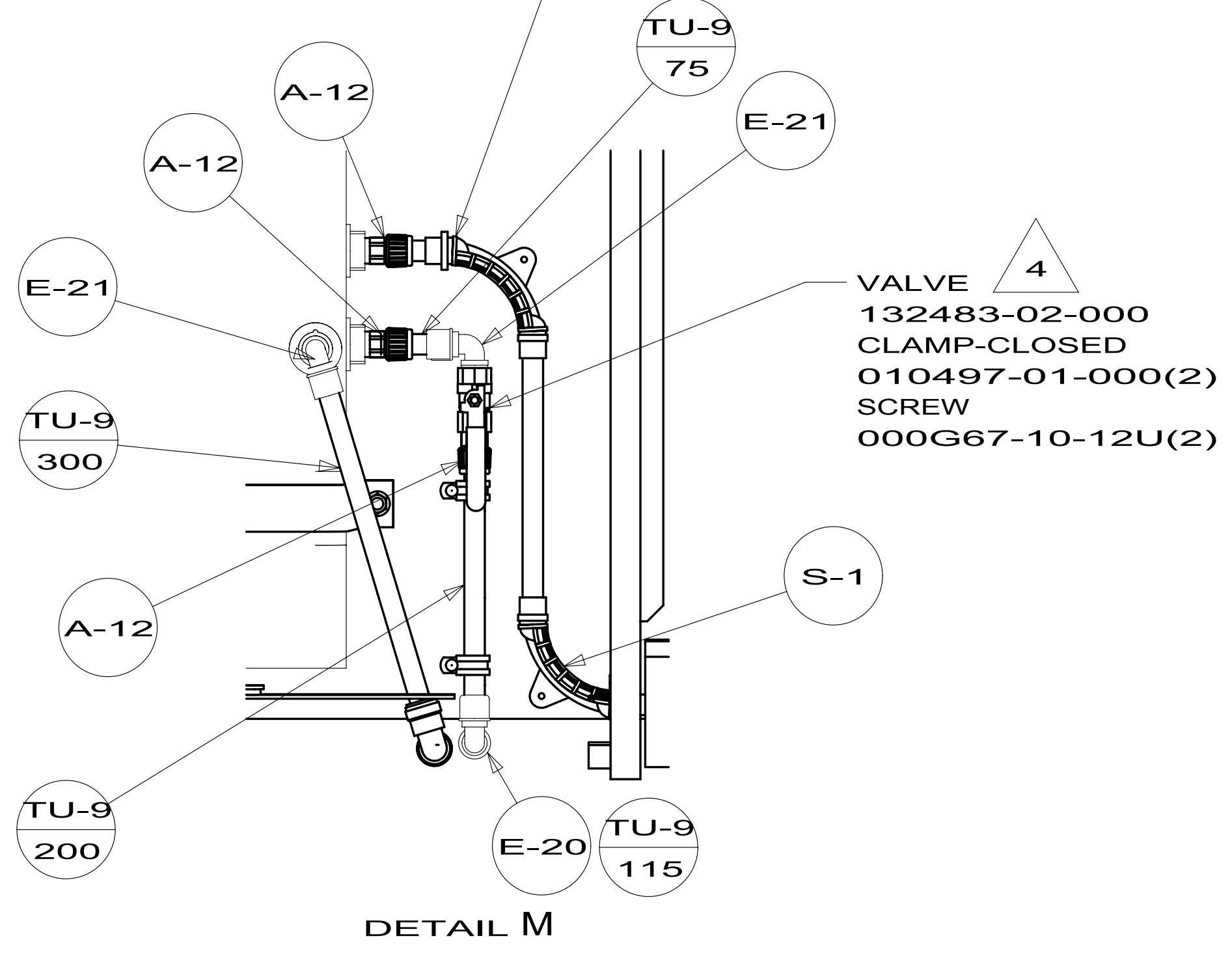


DETAIL M

DETAIL G



SECTION P-P
(ROTATED 90°)

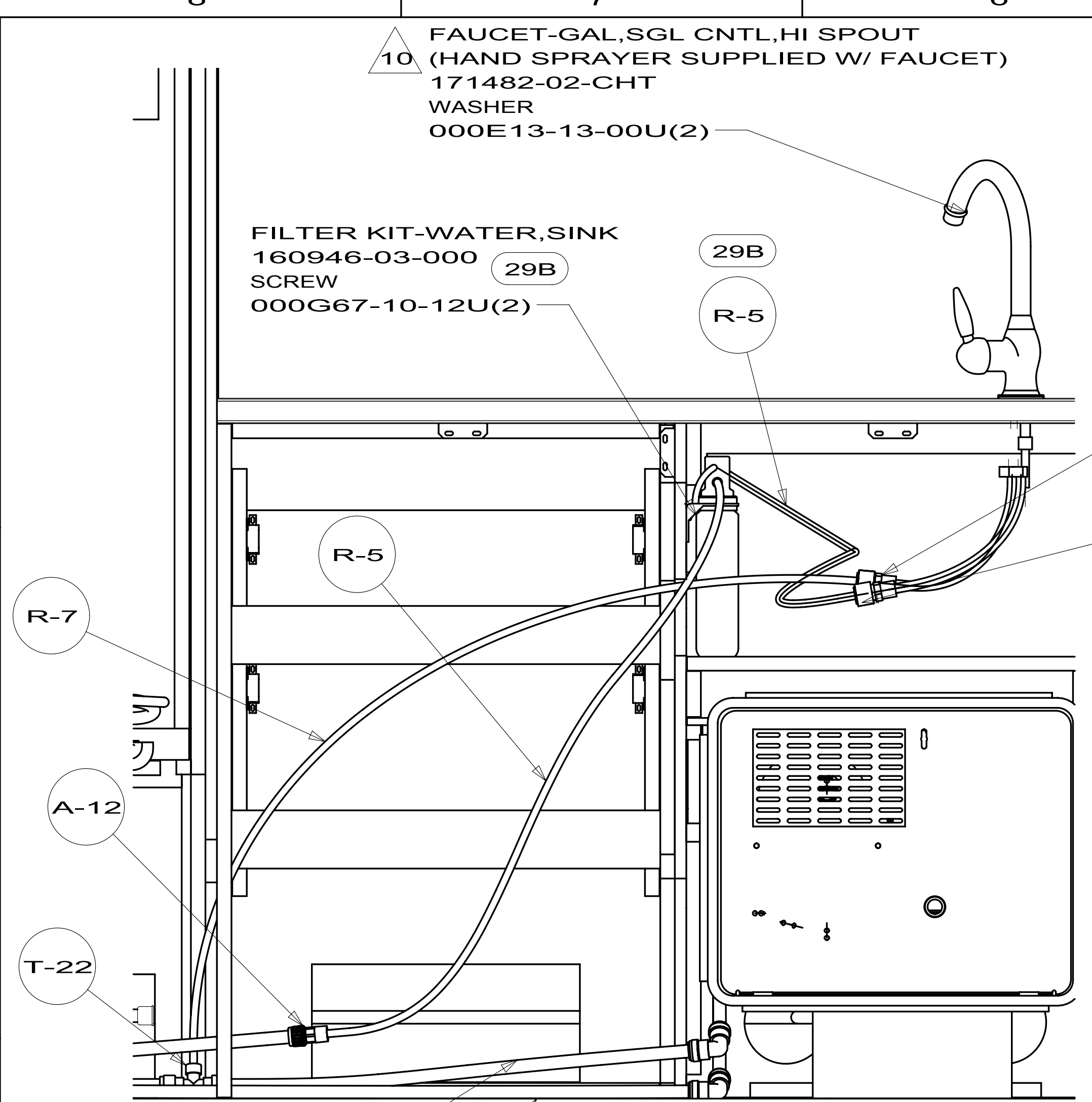


DETAIL M

FIRST USED	12 524M	
TITLE:	DO NOT SCALE DRAWING	
	WATER SYSTEM INSTL	
SHEET 2	PART NO	176916
	REV	

10 FAUCET-GAL,SGL CNTL,HI SPOUT
(HAND SPRAYER SUPPLD W/ FAUCET)
171482-02-CHT
WASHER
000E13-13-00U(2)

FILTER KIT-WATER,SINK
160946-03-000
SCREW
000G67-10-12U(2)



VIEW N
(ROTATED)

TO WATER HEATER
FROM WATER HEATER
TO FAUCET

236

630

DETAIL B

PANEL-WATER PUMP
149477-08-CHT
FOAM
140364-01-CHT
SCREW
000G39-08-24U (4)

CLAMP-CLOSED
010497-01-000 (4)
SCREW
000G67-10-12U (4)

CLAMP-CLOSED
010497-01-000
SCREW
000G67-10-12U

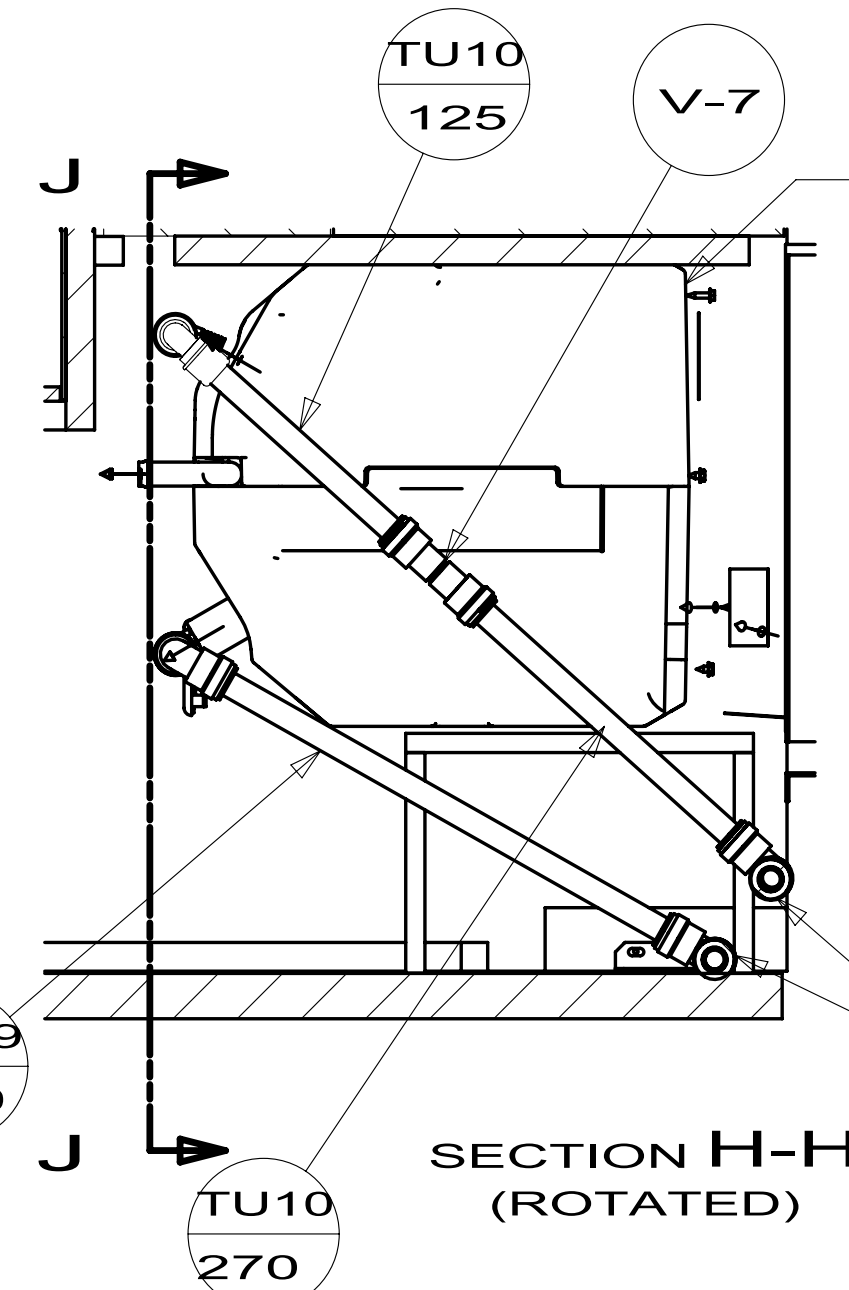
SCREW
000G60-08-12U

SCREW
000G60-08-12U

CLAMP-CLOSED
010497-01-000
SCREW
000G67-10-12U

SCREW
000G60-08-12U

SECTION X-X



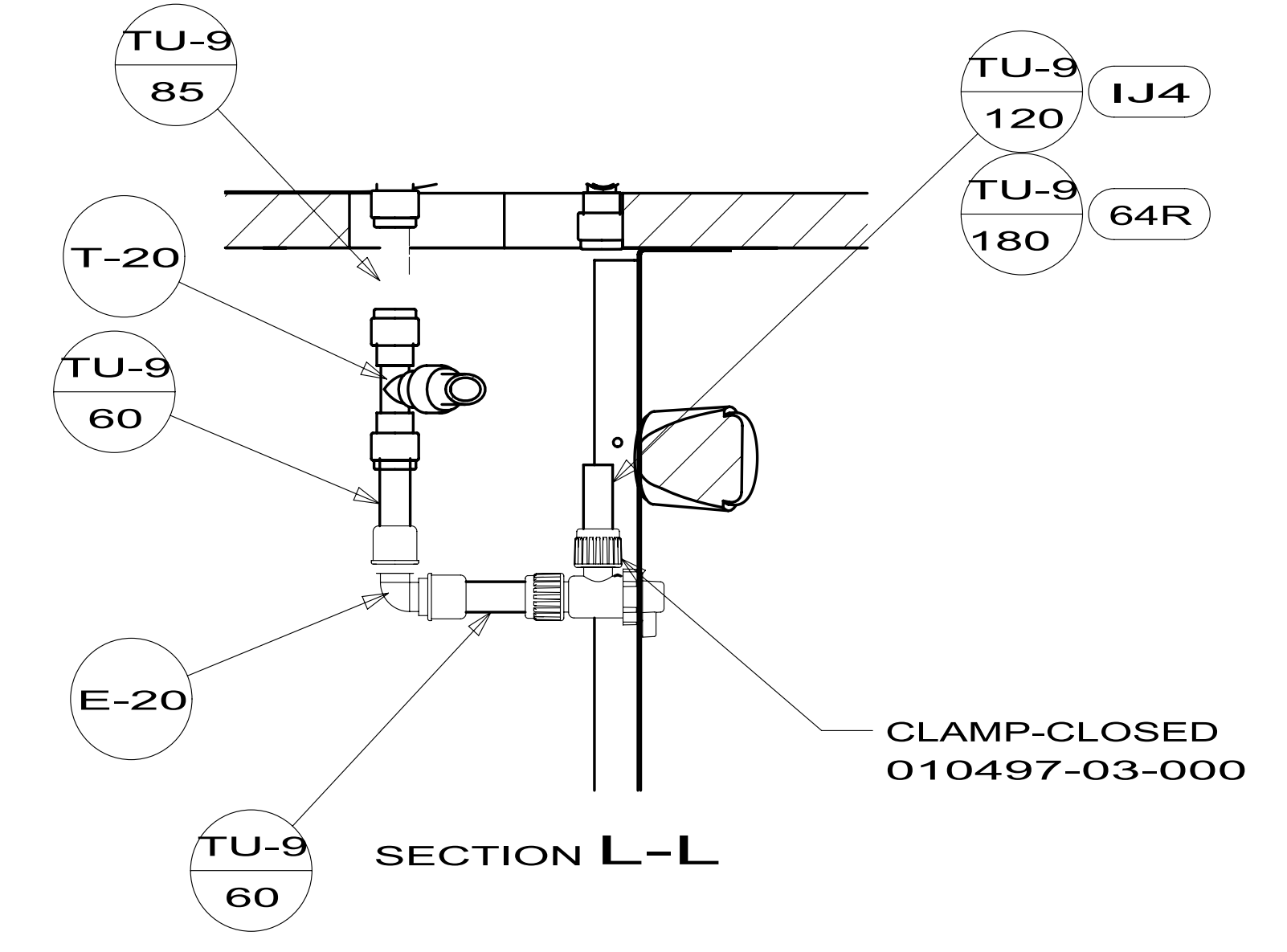
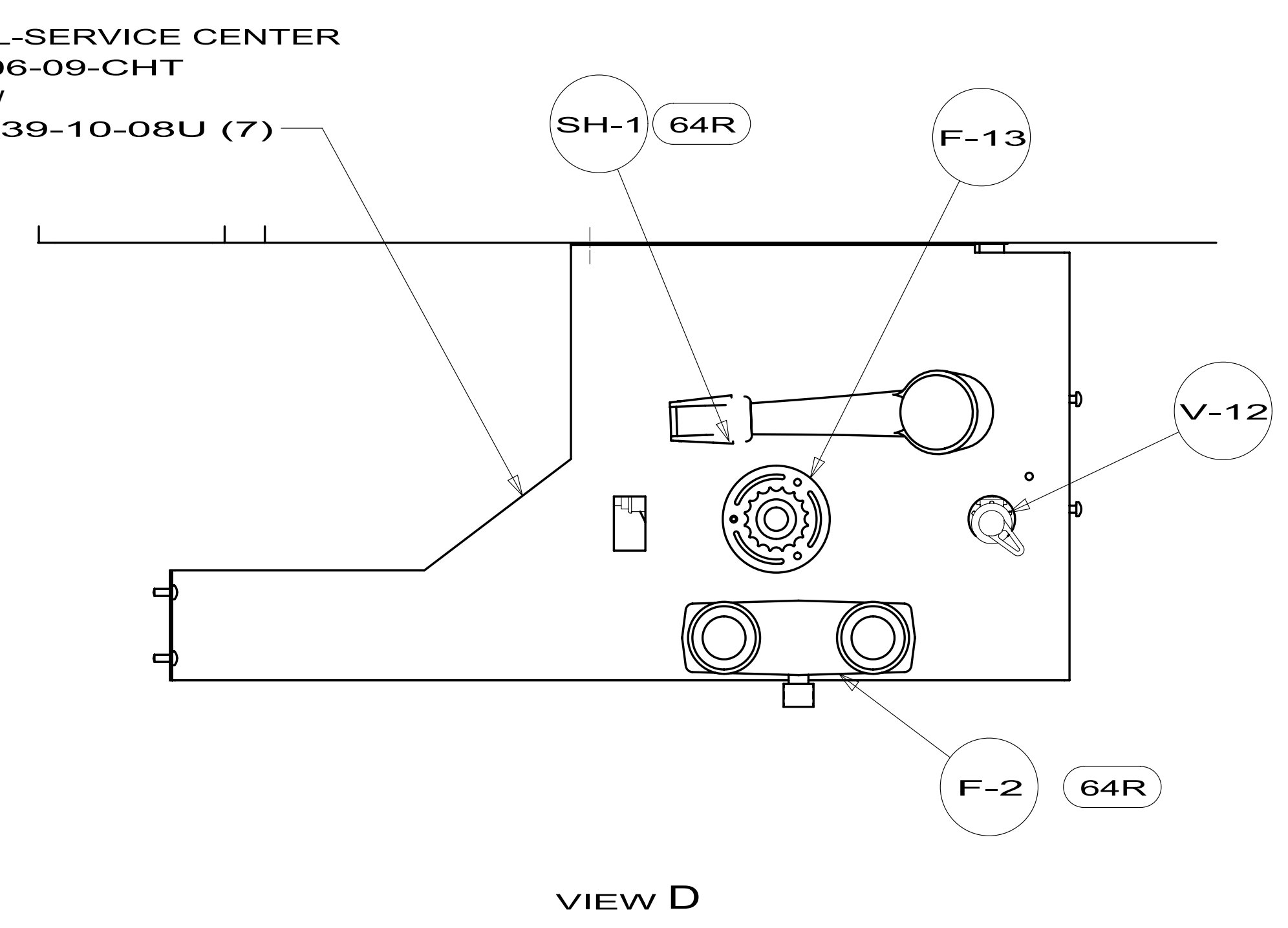
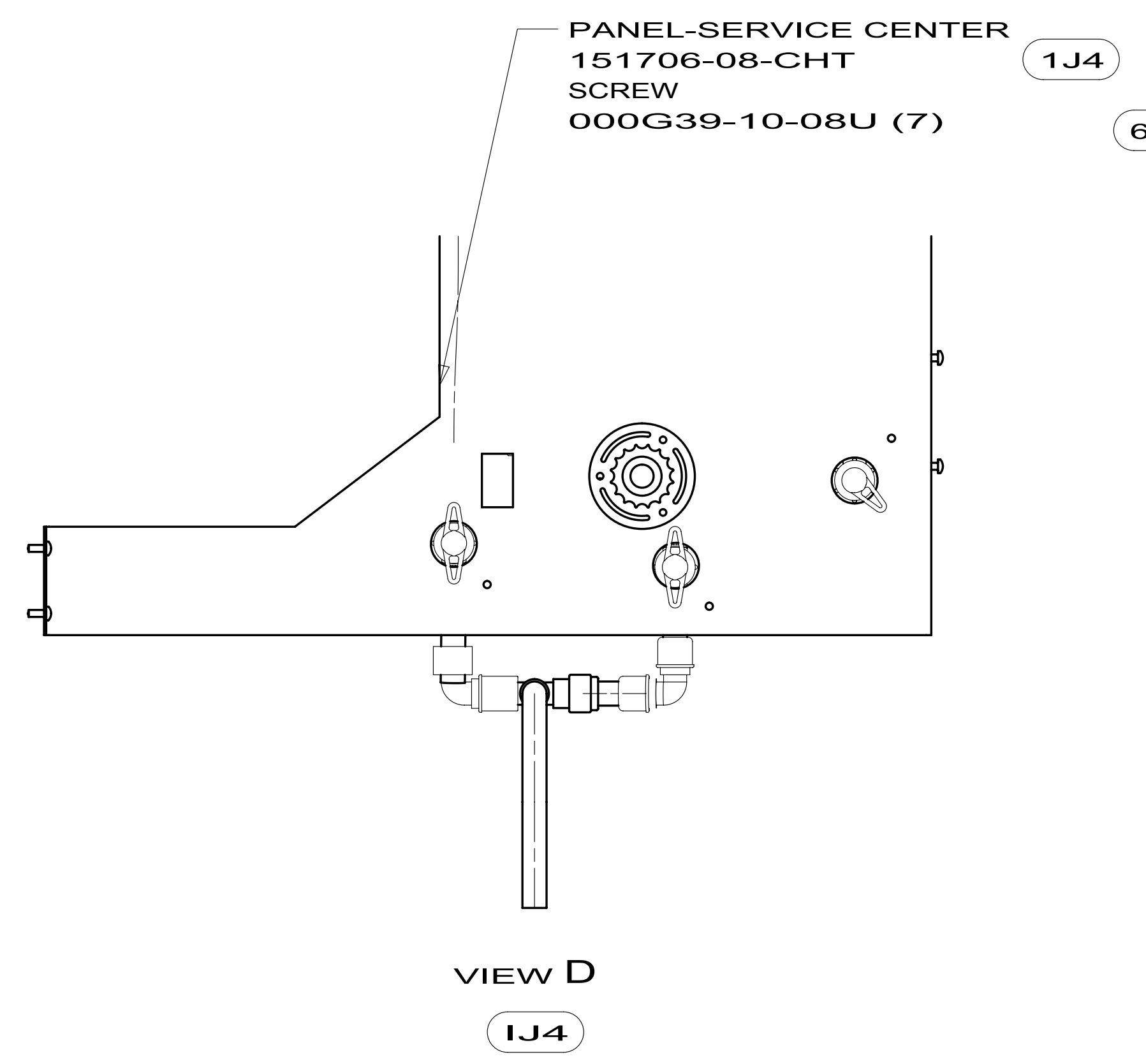
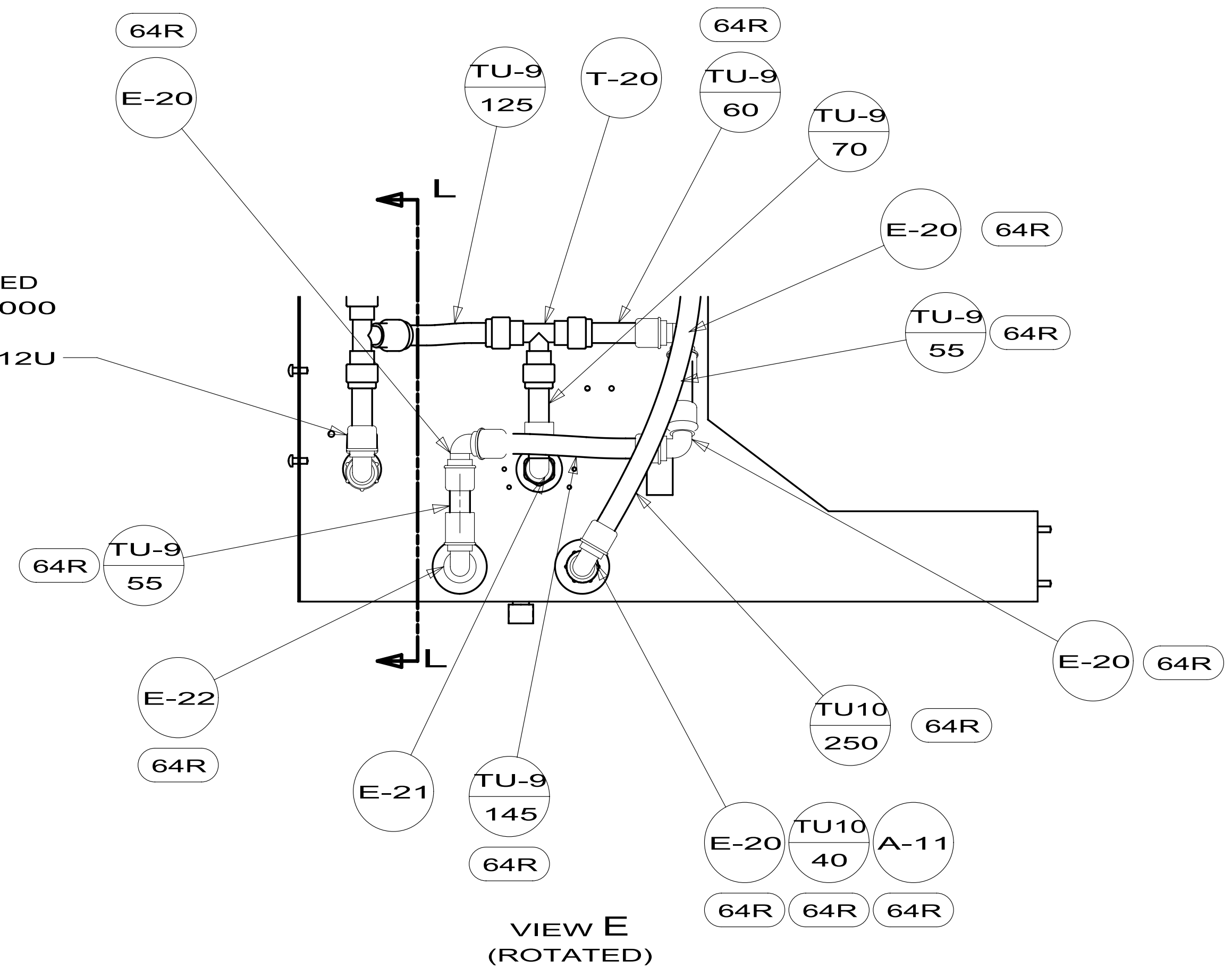
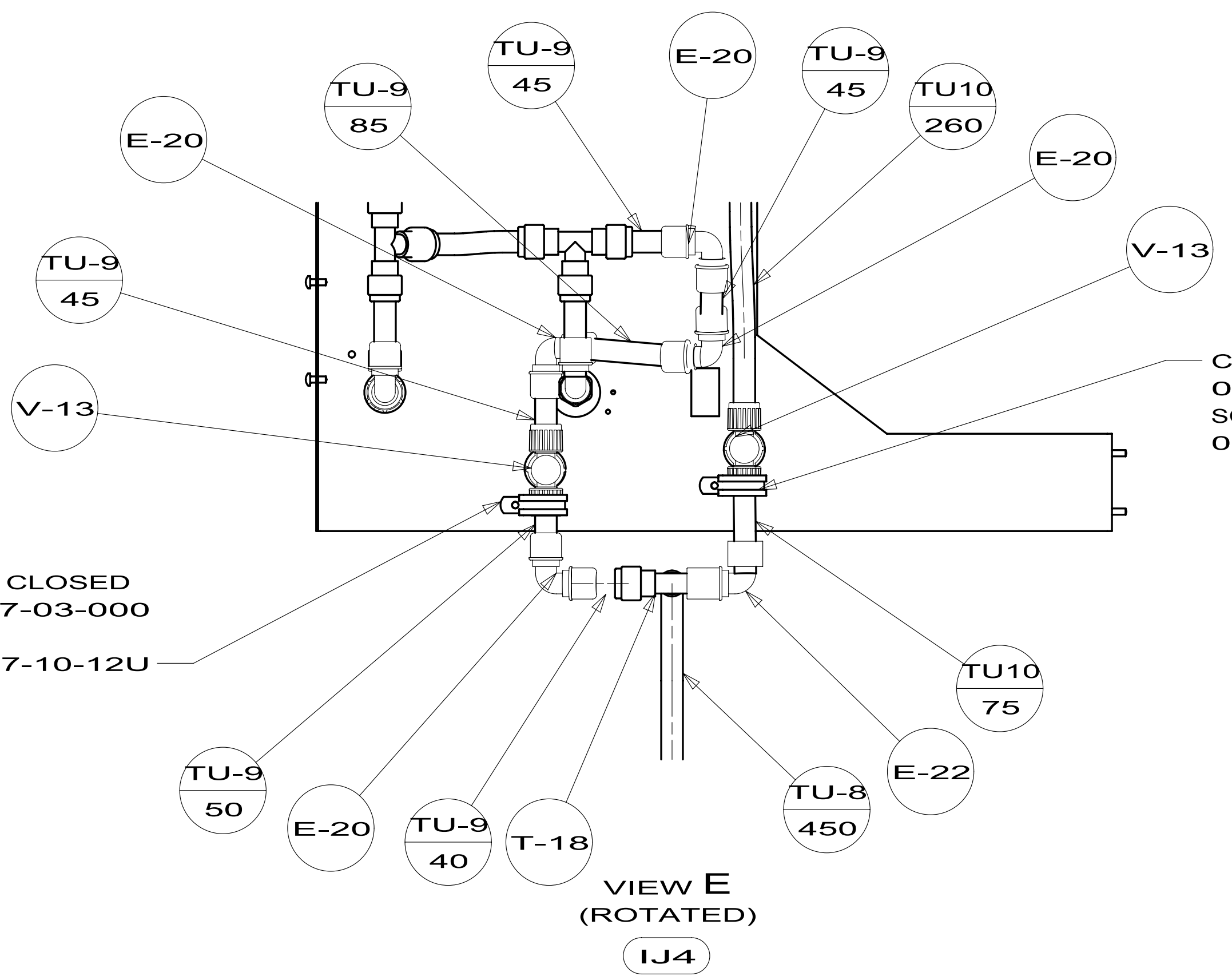
SECTION H-H
(ROTATED)

WATER HEATER
145541-02-000 (53B)
DOOR
125420-06-CHT
CABLE
076767-03-000
SCREW
000G11-06-08U (2)
FLANGE
152239-01-CHT
EXTR
165959-51-002 (2)
EXTR
165959-51-004 (2)
SCREWS
000G39-10-16U (16)

PLATFORM ASM
144200-09-000

SECTION J-J

FIRST USED	12 524M	
TITLE:	DO NOT SCALE DRAWING	
	WATER SYSTEM INSTL	
SHEET 3	PART NO	176916
	REV	



FIRST USED	12 524M	
TITLE:	DO NOT SCALE DRAWING	
TITLE:	WATER SYSTEM INSTL	
SHEET 4	PART NO 176916	REV