

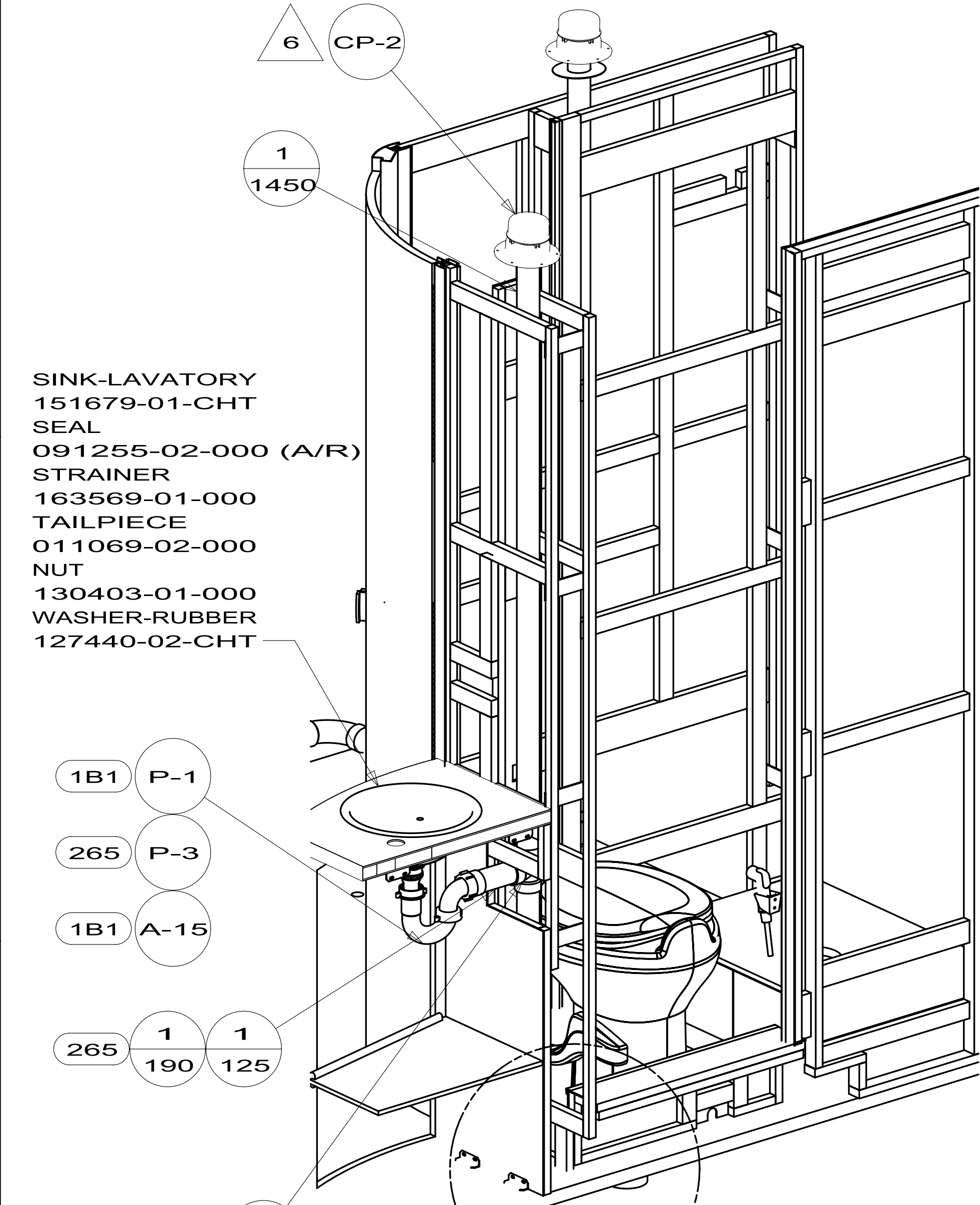
FRONT  
OF  
COACH

- 1B1 CODES/STANDARDS-USA
- 265 CODES/STDS-CSA/CMVSS
- 23T DRAINAGE SYSTEM-HEATED
- 1JD DRAINAGE SYSTEM-HEATED-W/O
- 464 TOILET

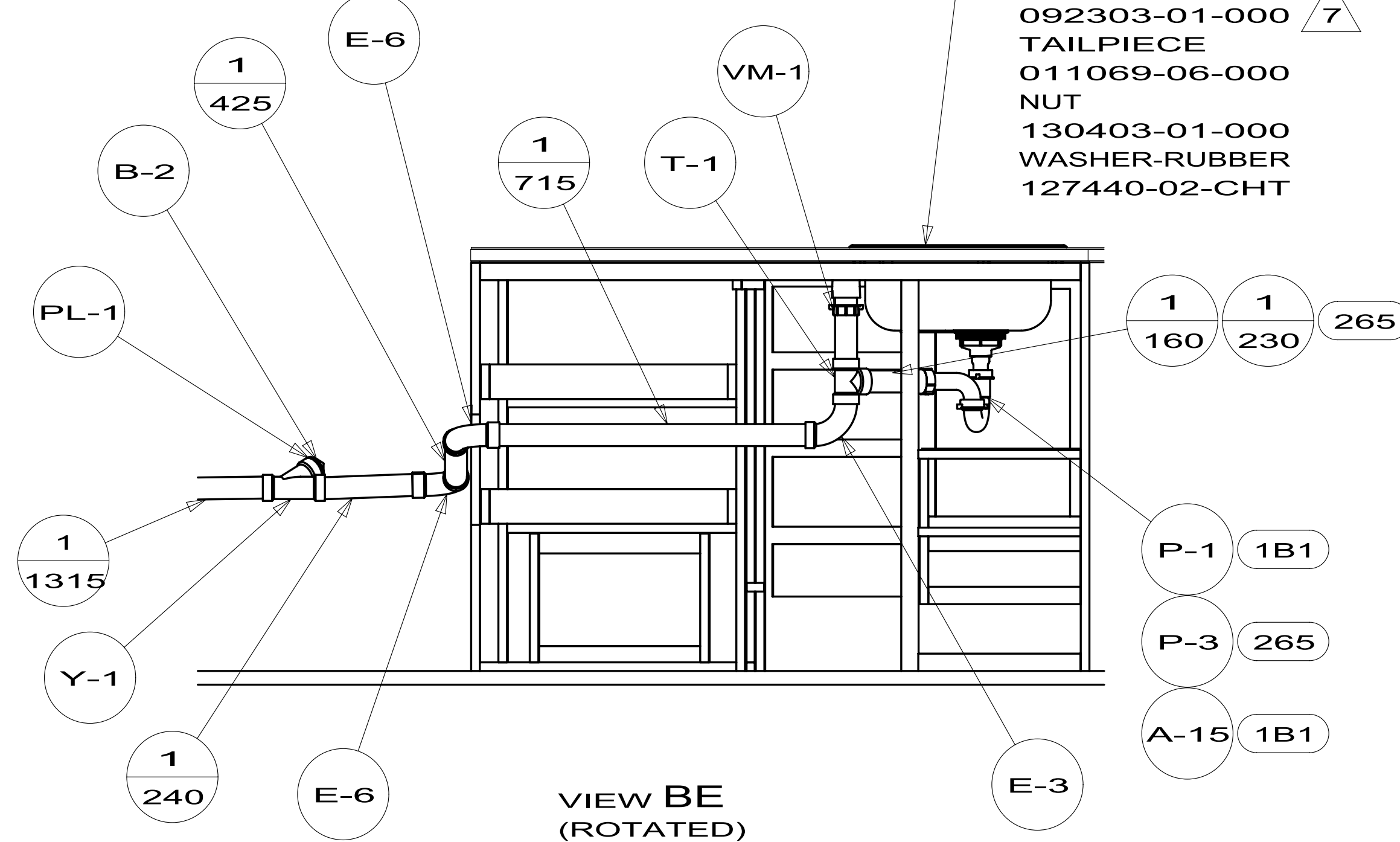
- NOTES:
8. PREP THE SURFACE PER MANUFACTURERS INSTRUCTIONS BEFORE APPLYING THE HEATING PAD.
  7. USE SMOOTH PLUMBERS PUTTY 167459-01-000 TO SEAL STRAINER (.2 PER STAINER)
  6. VENT PIPE MUST PROJECT 51 MIN AND 64 MAX ABOVE ROOF FOR PROPER FIT AND FUNCTION.
  5. SEAL AROUND SHOWER WITH SILICONE.
  4. SECURE VENT PIPE TO FLOOR WITH CLAMP 062401-02-000 (2), SCREW 000G67-10-12B (2), BRACKET 136878-01-CHT (2).
  3. ALL PIPE AND FITTINGS TO BE ASSEMBLED WITH SOLVENT 4020-01-000 (USA), 4020-02-000 (CAN)
  2. SLOPE OF TRAP ARM MUST BE 6 PER 305 mm.
  1. SLOPE OF HORIZONTAL PIPING TO BE MIN 3 PER 305 mm.

FOR  
DRAINAGE  
CALLOUTS  
SEE DWG NO  
116229-01-000

		COPYRIGHT 2011 WINNEBAGO INDUSTRIES, INC.
DTR	ORIG. DATE	ALL DIMENSIONS ARE IN MILLIMETERS
CHKR		
P.E.		
M.E.	FIRST USED	
DSNR	12 524J	
UNSPECIFIED TOLERANCES ARE: WHOLE DIM (X) : 3 ONE-PLACE (X.X) : 1.5 TWO-PLACE (X.XX) : 0.50 ANGLE : 1°		MATERIAL:  REFER TO ES0018 FOR FASTENER TIGHTENING GUIDELINES
THIRD ANGLE PROJECTION		
DO NOT SCALE DRAWING		
TITLE: <b>DRAINAGE SYSTEM INSTL</b>		
SHEET 1 OF 3	PART NO	179332
REF:	1	11/7/2011

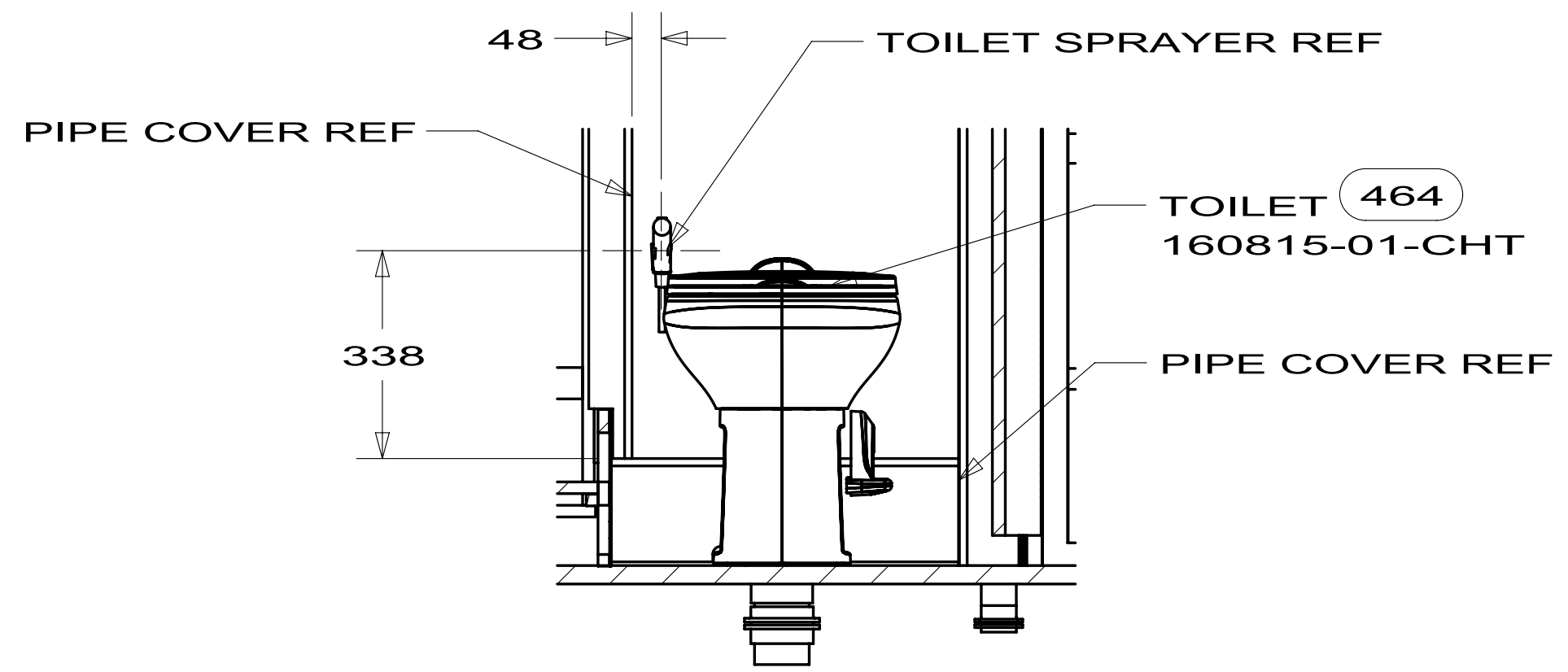


- SINK-LAVATORY  
151679-01-CHT
- SEAL  
091255-02-000 (A/R)
- STRAINER  
163569-01-000
- TAILPIECE  
011069-02-000
- NUT  
130403-01-000
- WASHER-RUBBER  
127440-02-CHT



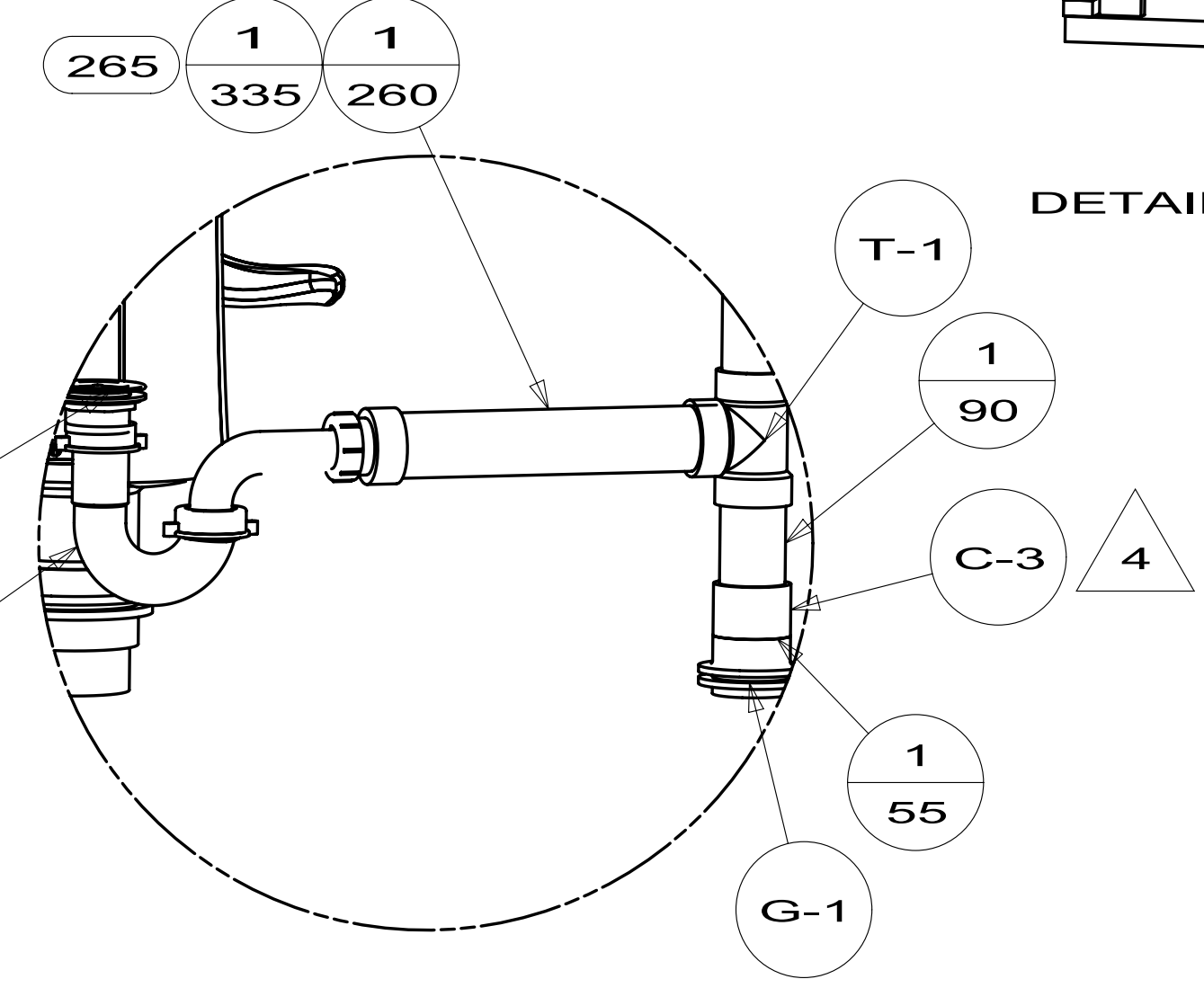
- GALLEY SINK  
165118-01-CHT
- SEAL  
091255-02-000 (A/R)
- STRAINER  
092303-01-000
- TAILPIECE  
011069-06-000
- NUT  
130403-01-000
- WASHER-RUBBER  
127440-02-CHT

VIEW BE  
(ROTATED)

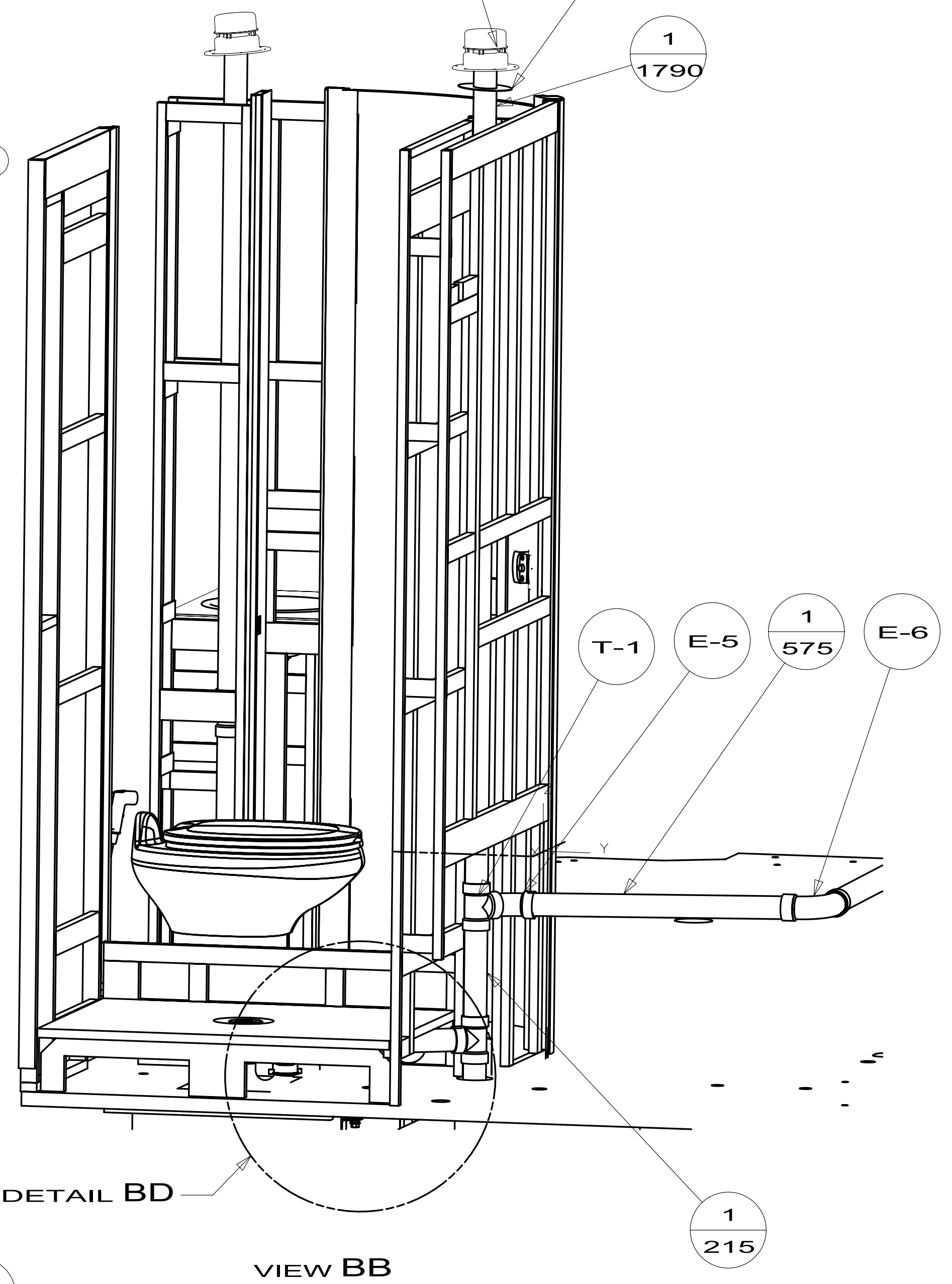


SECTION BF-BF

- SHOWER INSTL  
147936-01-000
- STRAINER  
066440-01-000
- TAILPIECE  
011069-06-000
- NUT  
130403-01-000
- WASHER-RUBBER  
127440-02-CHT

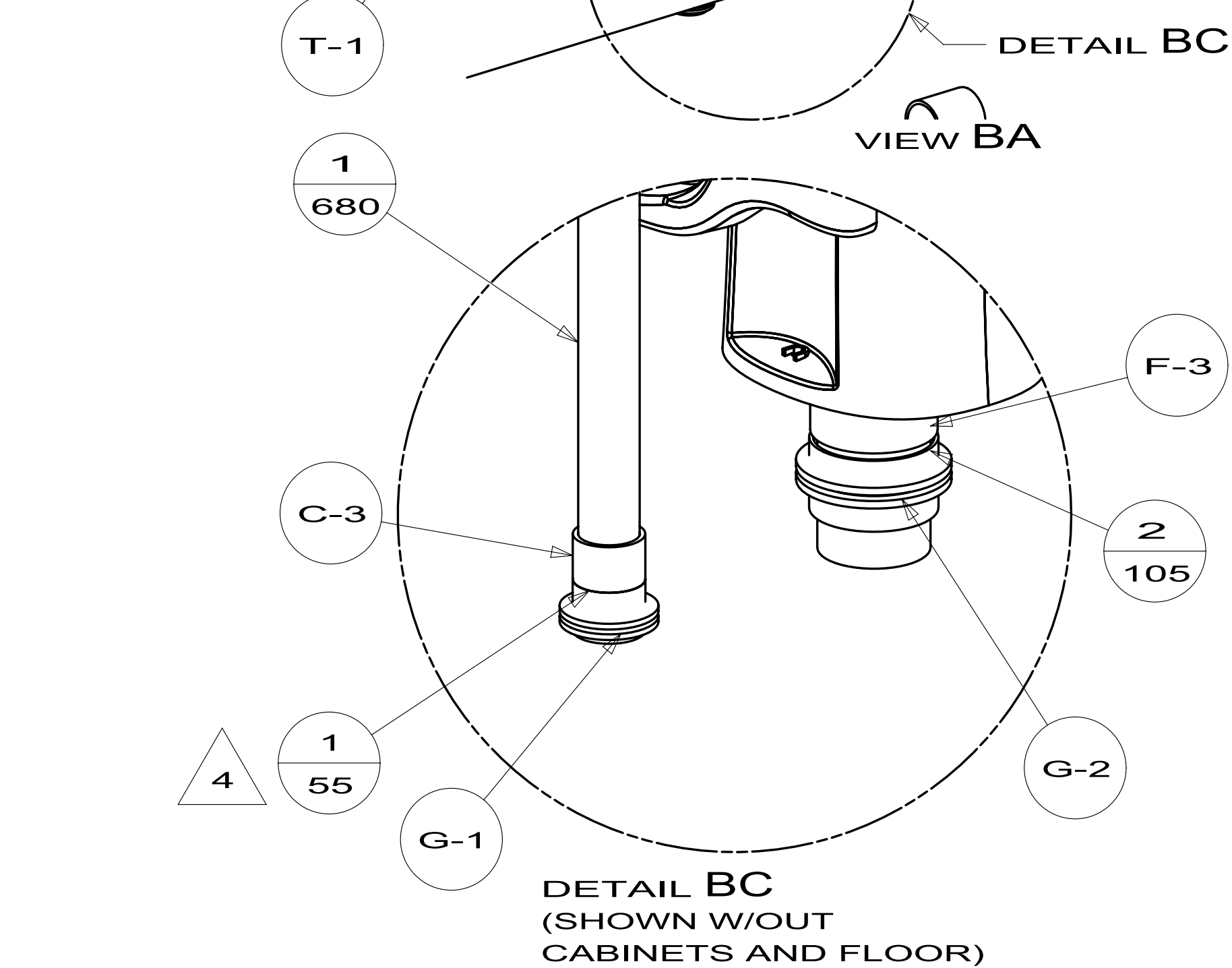


DETAIL BD  
(SHOWN W/OUT  
CABINETS AND FLOOR)



VIEW BB

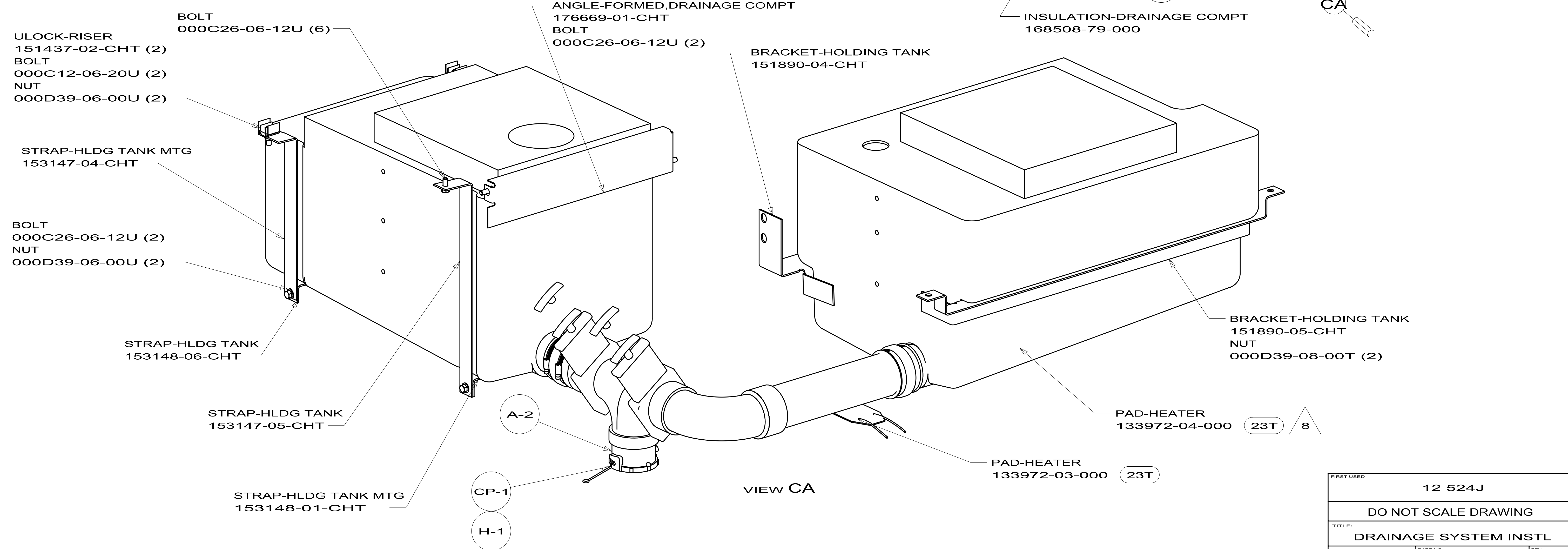
DETAIL BD



DETAIL BC  
(SHOWN W/OUT  
CABINETS AND FLOOR)

FIRST USED	12 524J	
DO NOT SCALE DRAWING		
TITLE: DRAINAGE SYSTEM INSTL		
SHEET 2	PART NO 179332	REV

### SHOWING TANKS AND DRAINS BELOW FLOOR



- ULOCK-RISER  
151437-02-CHT (2)
- BOLT  
000C12-06-20U (2)
- NUT  
000D39-06-00U (2)
- BOLT  
000C26-06-12U (6)
- STRAP-HLDG TANK MTG  
153147-04-CHT
- BOLT  
000C26-06-12U (2)
- NUT  
000D39-06-00U (2)

- STRAP-HLDG TANK  
153148-06-CHT
- STRAP-HLDG TANK  
153147-05-CHT
- STRAP-HLDG TANK MTG  
153148-01-CHT

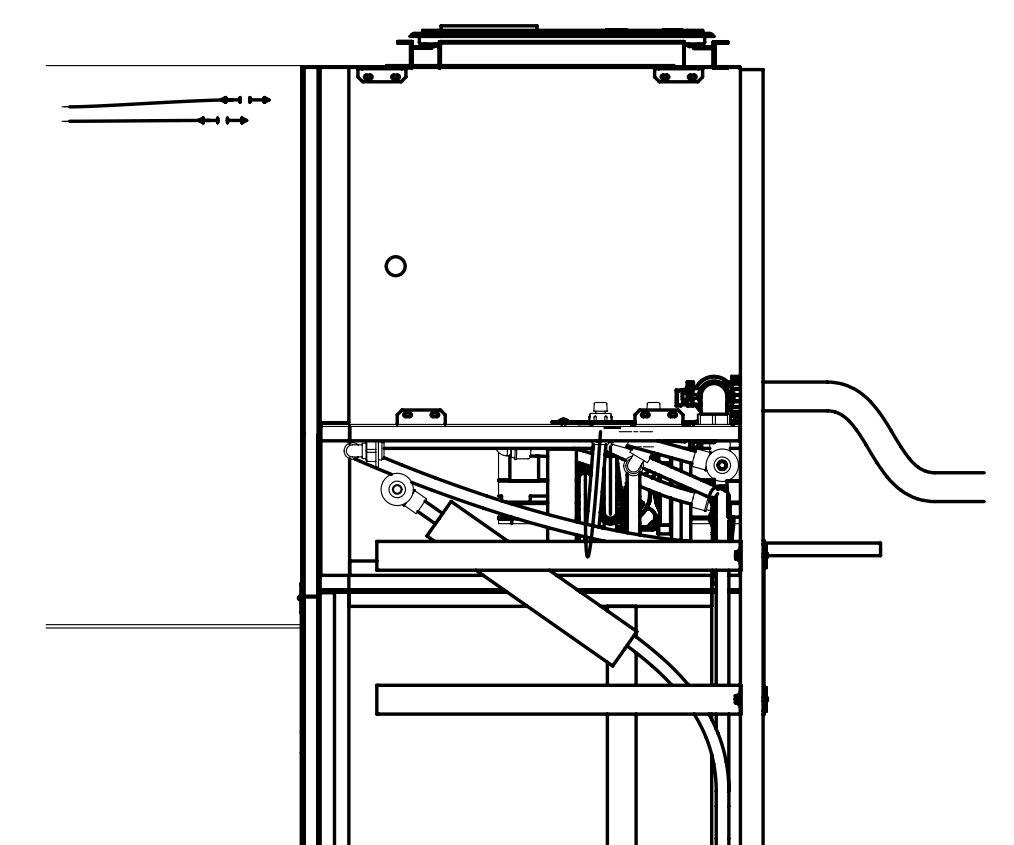
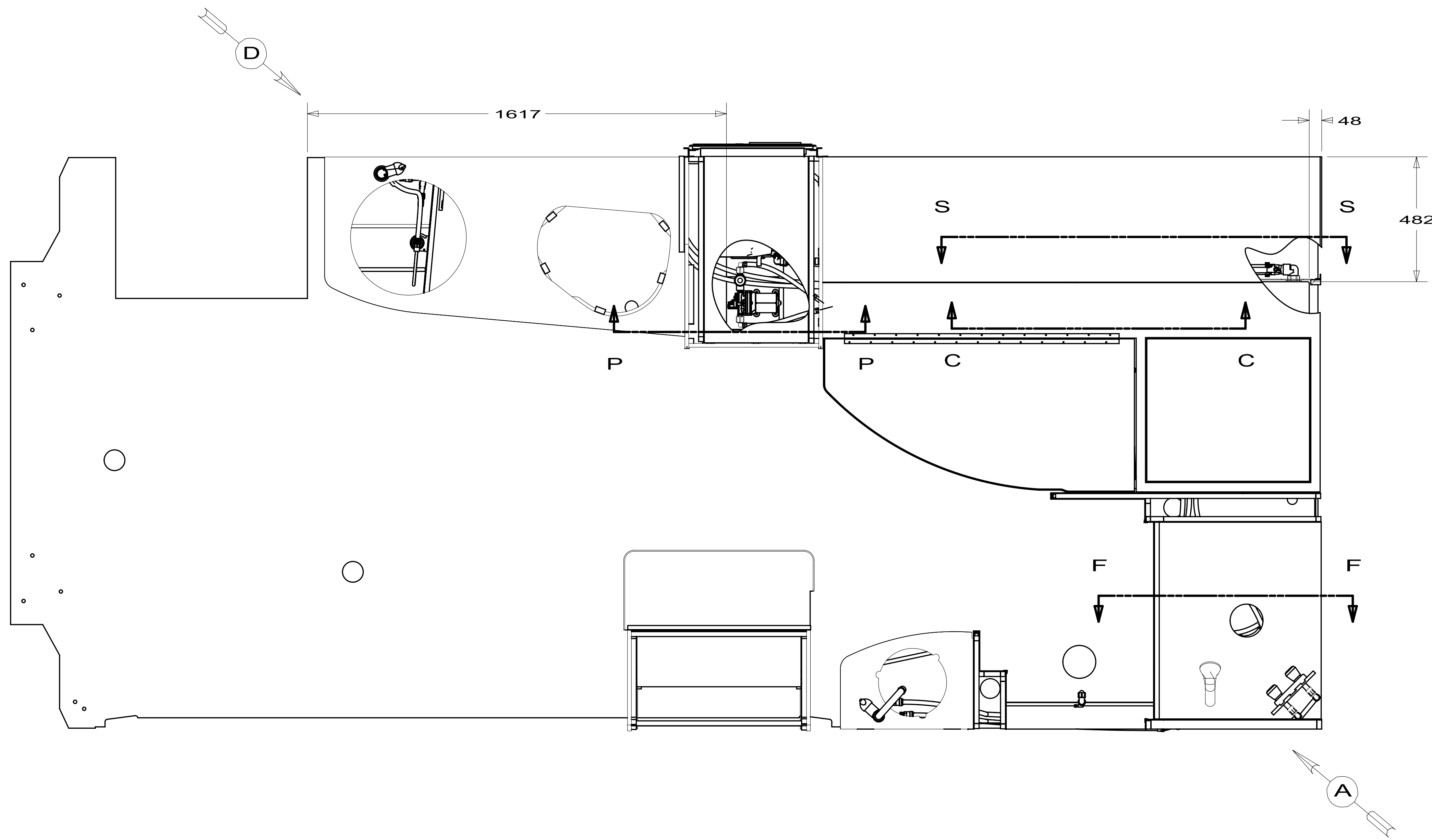
- ANGLE-FORMED, DRAINAGE COMPT  
176669-01-CHT
- BOLT  
000C26-06-12U (2)

- BRACKET-HOLDING TANK  
151890-04-CHT

- BRACKET-HOLDING TANK  
151890-05-CHT
- NUT  
000D39-08-00T (2)

- PAD-HEATER  
133972-04-000 (23T)
- PAD-HEATER  
133972-03-000 (23T)

FIRST USED	12 524J	
TITLE:	DO NOT SCALE DRAWING	
TITLE:	DRAINAGE SYSTEM INSTL	
SHEET 3	PART NO 179332	REV



- 53E WATER SYS WINTERIZATION PKG
- 53B WTR HTR-6 GAL ELEC/LP/GAS
- 26B WATER PURIFIER
- 501 WATER PURIFIER WITHOUT
- 64R EXTERIOR WASH STATION

- 8. ENCASE FLEX WATER LINES IN CONVOLUTED TUBE (178782-00-300).
- 7. MOUNT TO COACH FLOOR PRIOR TO INSTALLING FLOOR ON CHASSIS.
- 6. TURN FAUCET HANDLE TO AVOID INTERFERENCE WITH WINDOW SHADE.
- 5. ADD TEFLON TAPE 10405-03-000.
- 4. ADD TEFLON TAPE 10405-01-000.

- 3. ALL TUBING TO BE SECURED AT 1200 INTERVALS MAXIMUM WITH CLAMP 10495-01-000 AND SCREW G67-10-12U OR EQUIVALENT.
- 2. TUBING TO BE INSTALLED WITH SUFFICIENT SLOPE TO PROVIDE DRAINAGE TO NEAREST VALVE.
- 1. PLASTIC FITTINGS TO BE SEALED WITH SEALANT 84456-01-000.

NOTES:

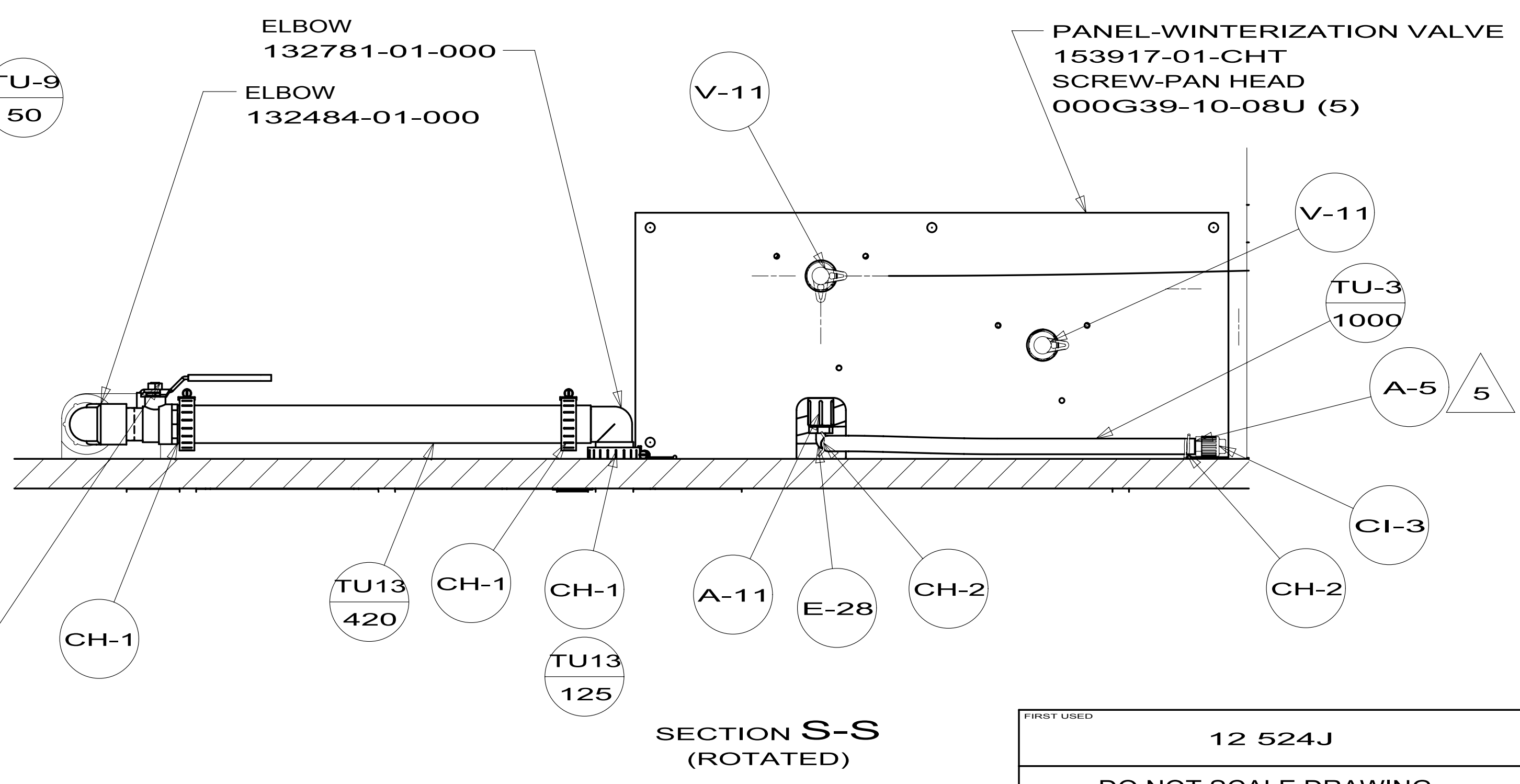
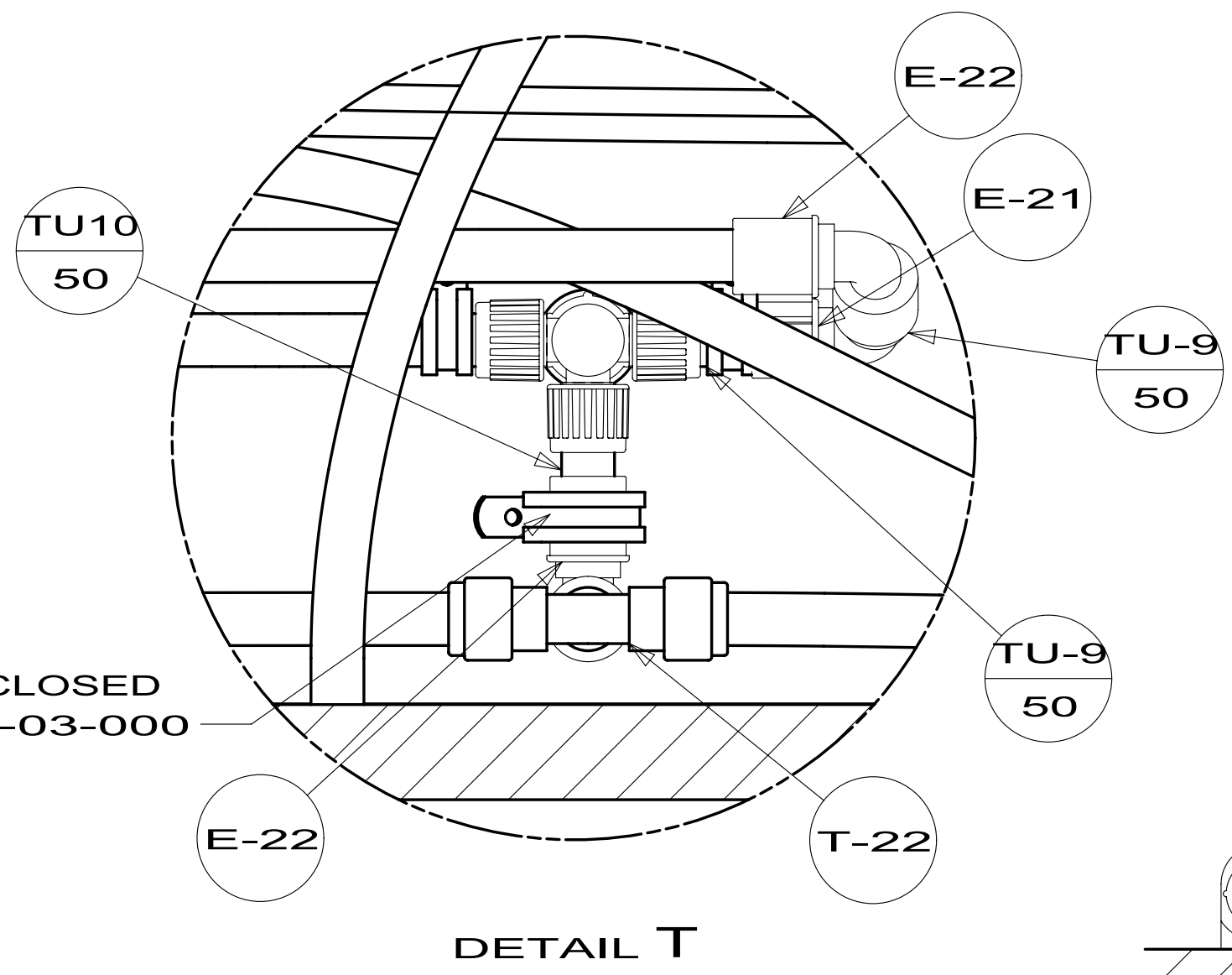
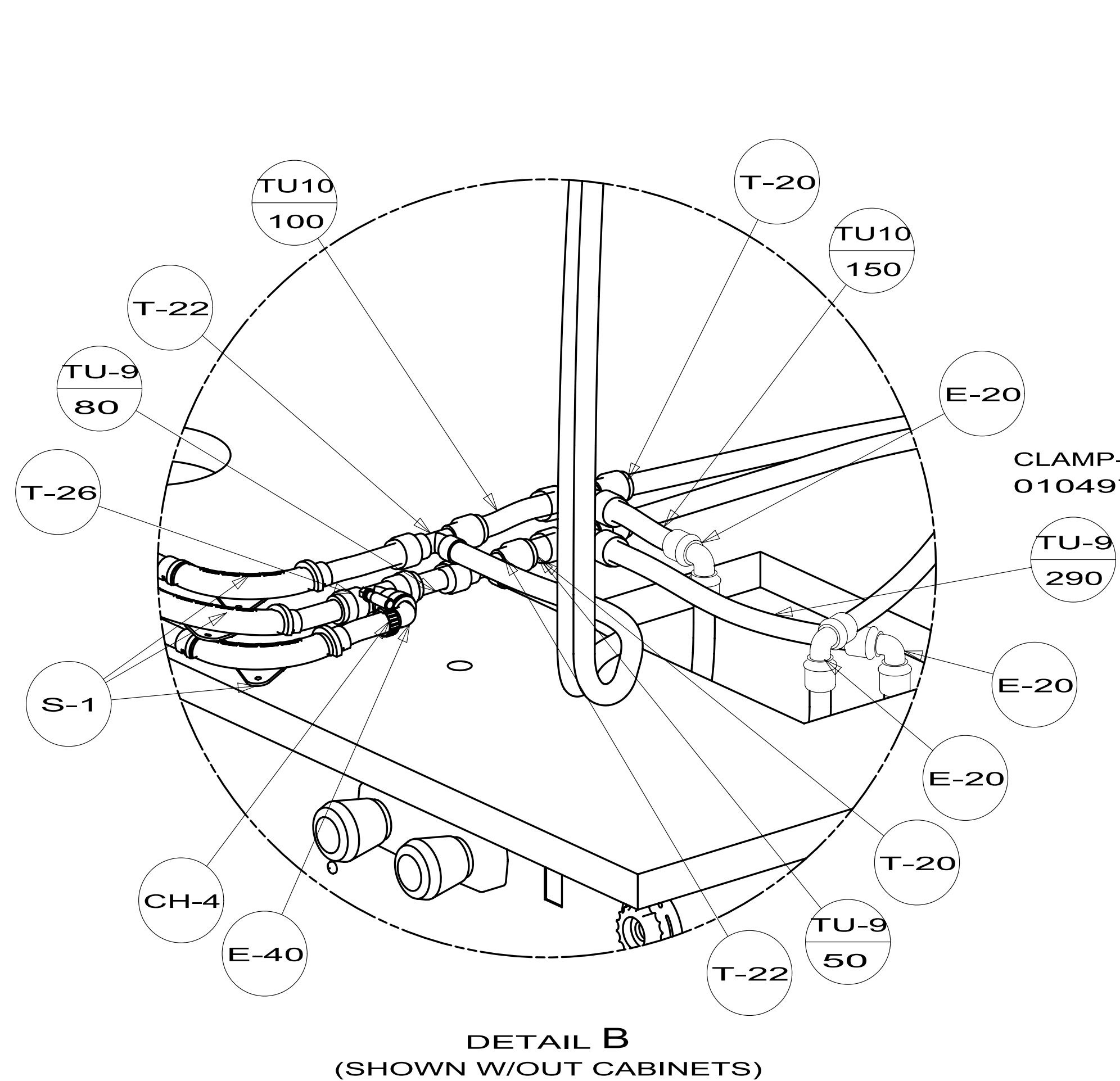
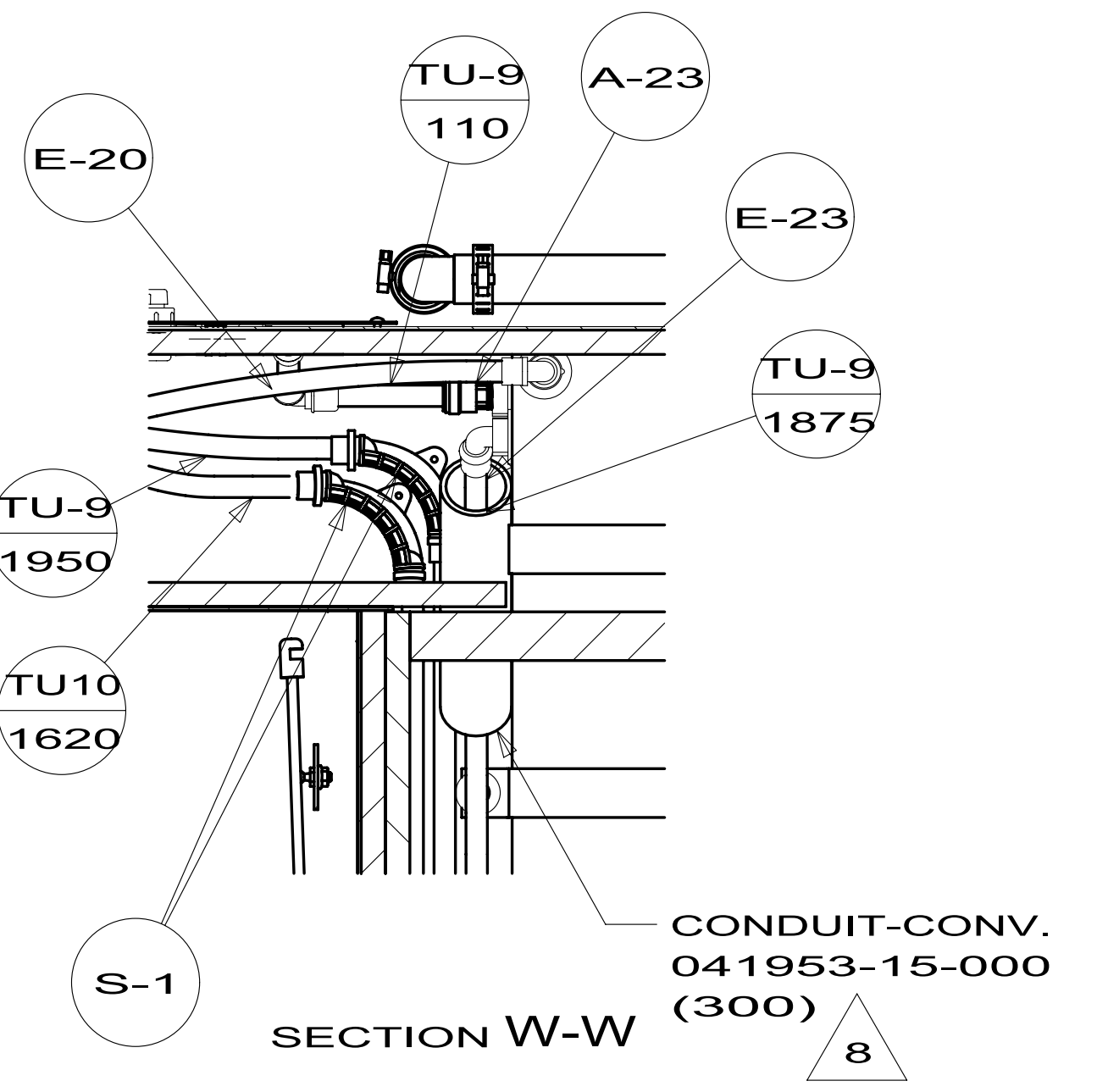
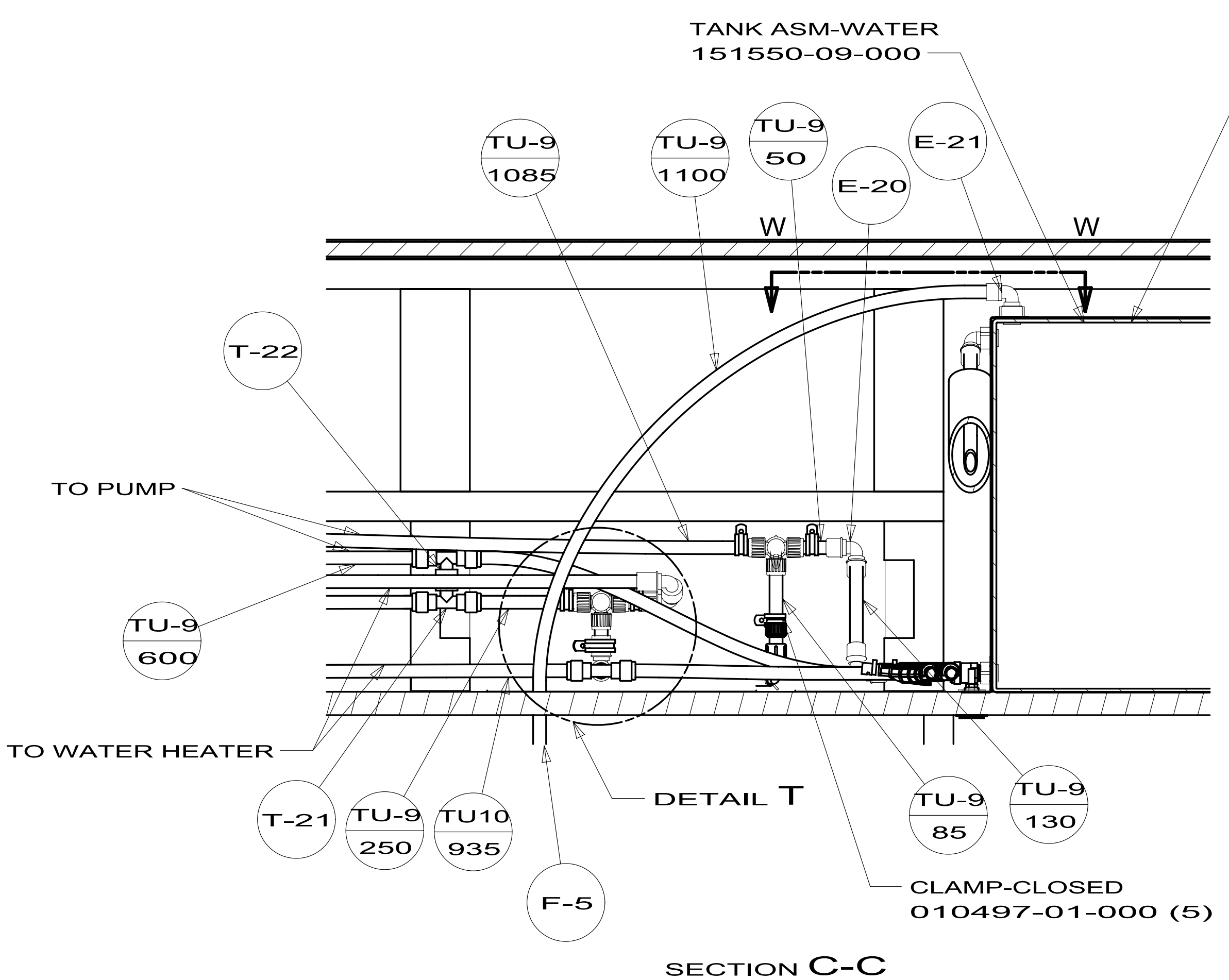
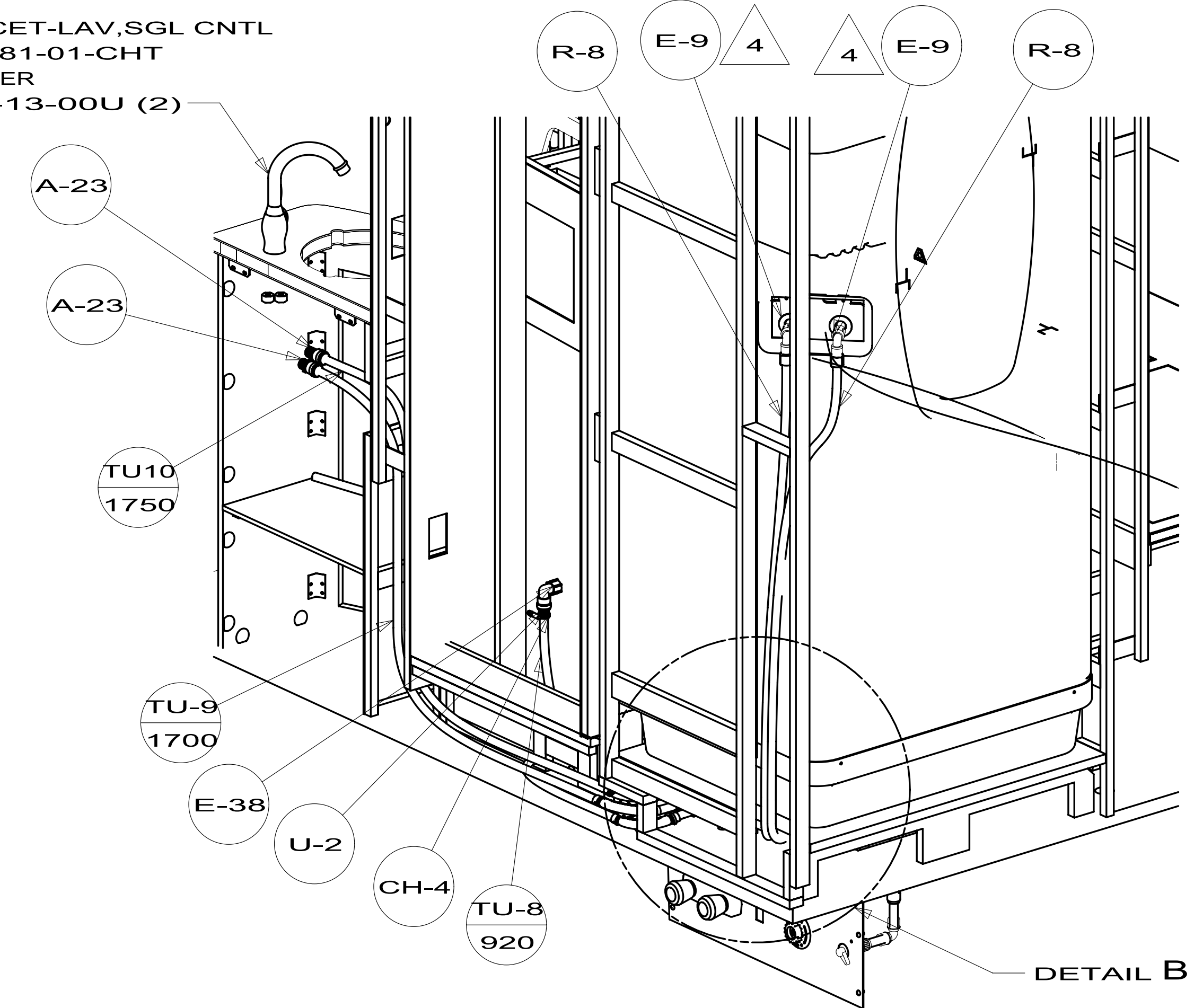
FOR WATER CALLOUTS SEE DWG NO 116230-01-000

		COPYRIGHT 2011 WINNEBAGO INDUSTRIES, INC.
DTR	ORIG. DATE	
CHKR	ALL DIMENSIONS ARE IN MILLIMETERS	
P.E.		
M.E.	FIRST USED	
DSNR	12 524J	
UNSPECIFIED TOLERANCES ARE:		MATERIAL:
WHOLE DIM (X)	: 3	
ONE-PLACE (X.X)	: 1.5	
TWO-PLACE (X.XX)	: 0.50	
ANGLE	: 1°	
THIRD ANGLE PROJECTION		
DO NOT SCALE DRAWING		REFER TO ES0018 FOR FASTENER TIGHTENING GUIDELINES
TITLE: WATER SYSTEM INSTL		
SHEET 1 OF 5	PART NO 179339	REV
REF:	1	12/5/2011

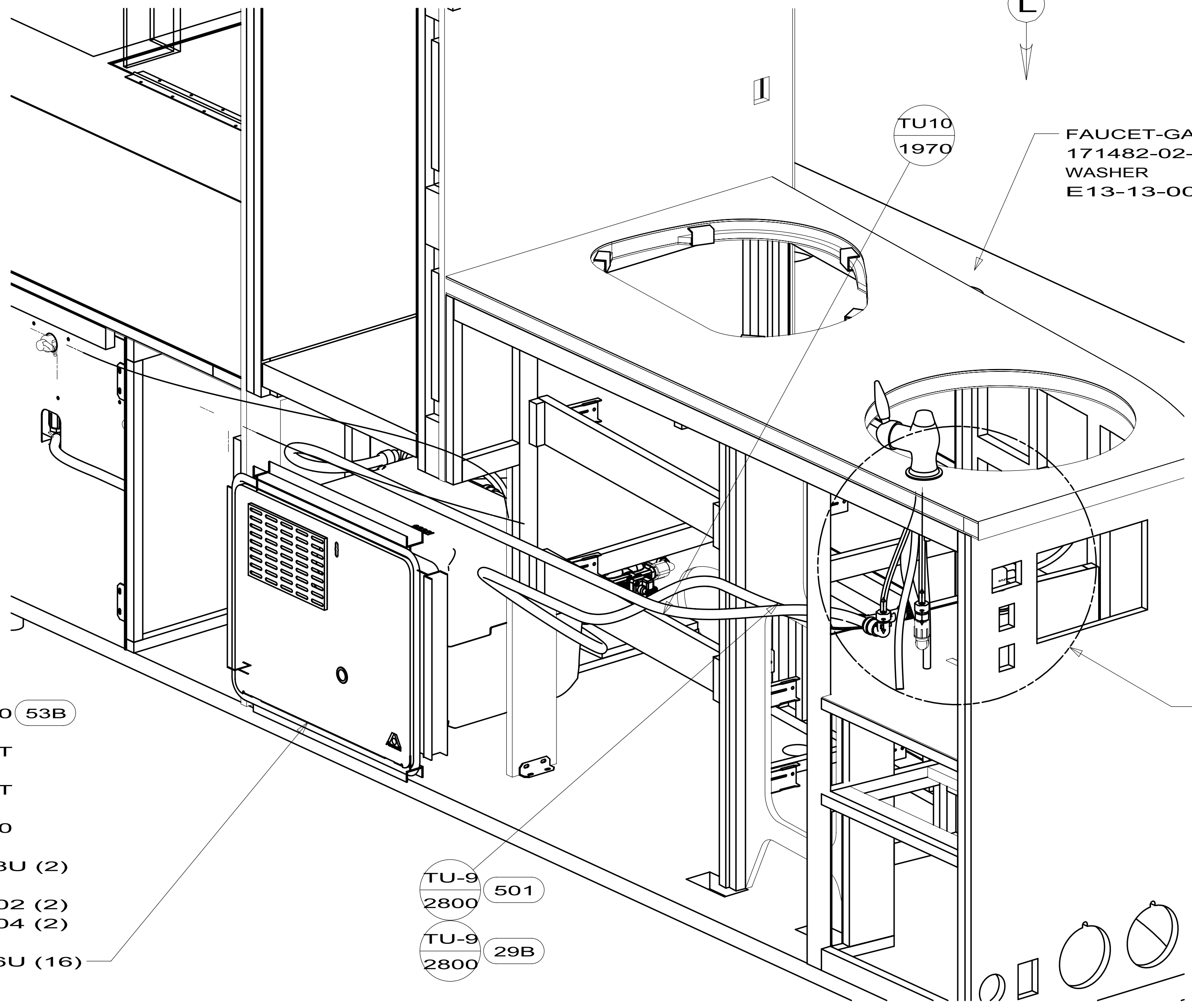
FAUCET-LAV, SGL CNTL  
171481-01-CHT  
WASHER  
E13-13-00U (2)

TANK ASM-WATER  
151550-09-000

STRAP-TANK, WATER  
118994-22-CHT (2)  
SCREW  
000G42-04-24U (2)  
WASHER  
000E13-16-00U (2)  
PLATE ASM  
174241-04-CHT (7)  
SCREW  
000G39-10-08U (2)  
NUT  
000D39-05-00U (2)  
WASHER  
000E13-22-00U (4)

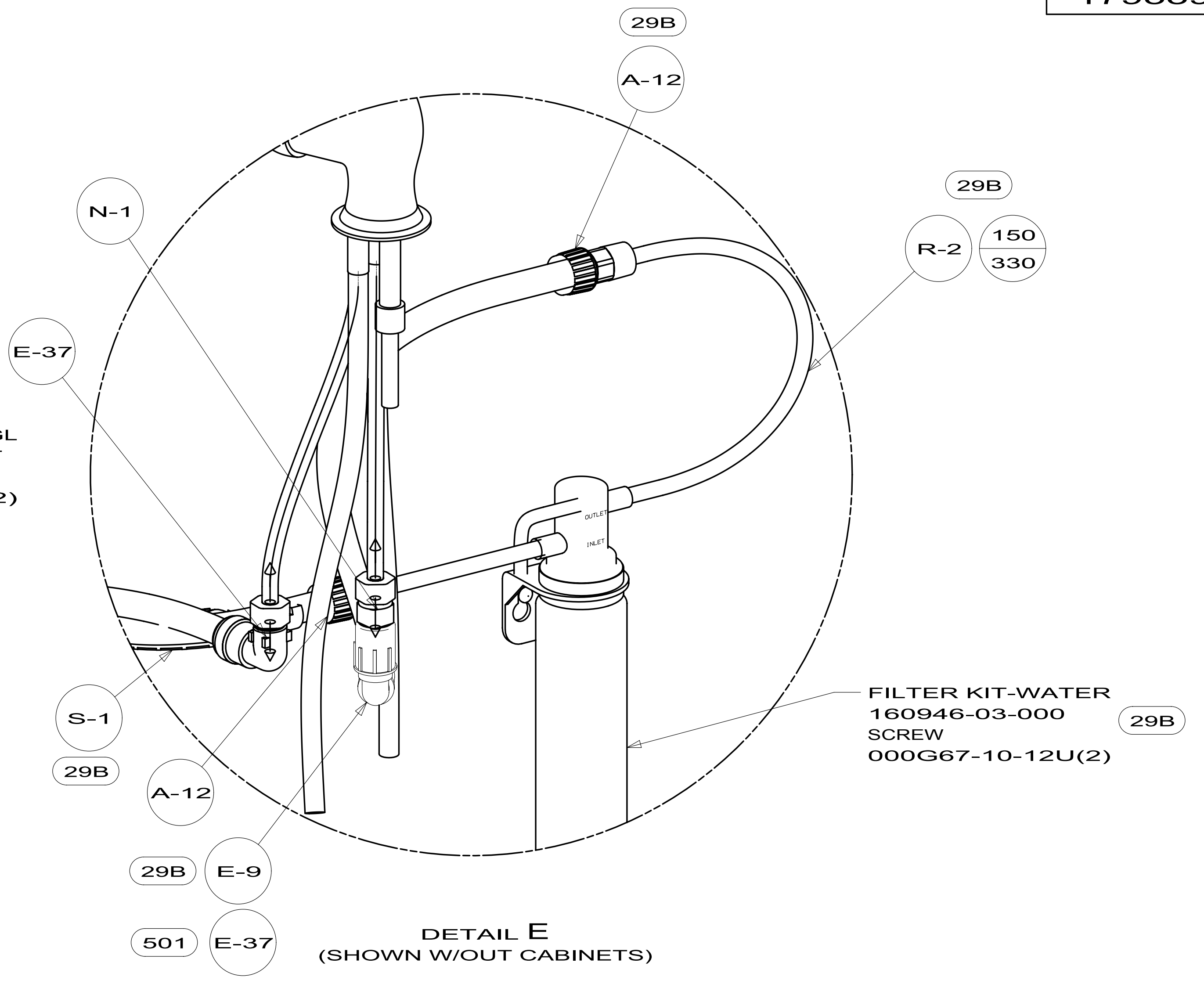


FIRST USED	12 524J	
TITLE:	DO NOT SCALE DRAWING	
	WATER SYSTEM INSTL	
SHEET 2	PART NO	179339
	REV	

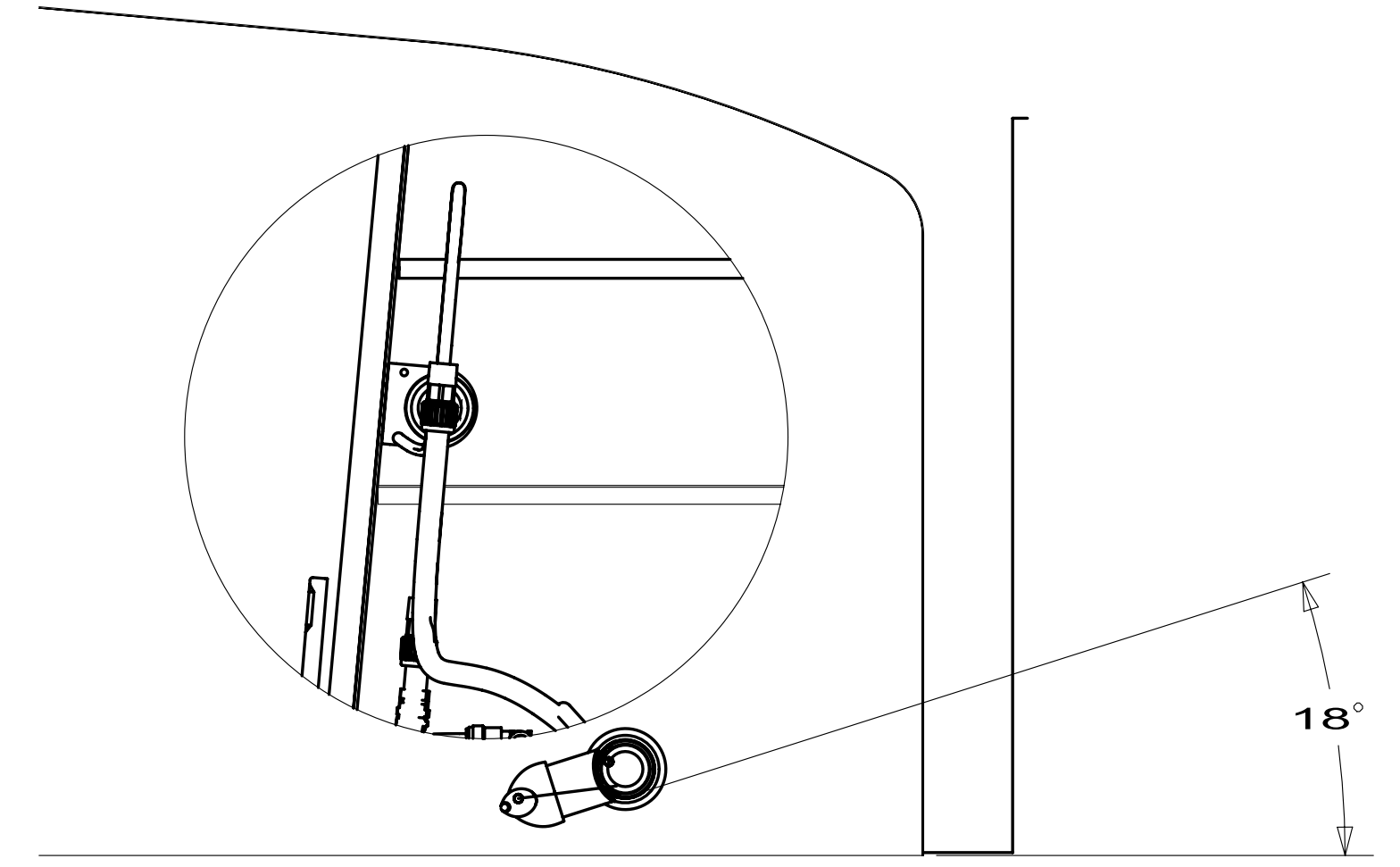


- WATER HEATER 145541-02-000 53B
- DOOR 125420-06-CHT
- FLANGE 152239-01-CHT
- CABLE 076767-03-000
- SCREW 000G11-06-08U (2)
- EXTR 165959-51-002 (2)
- 165959-51-004 (2)
- SCREW 000G39-10-16U (16)

FAUCET-GAL,SGL  
171482-02-CHT  
WASHER  
E13-13-00U (2)



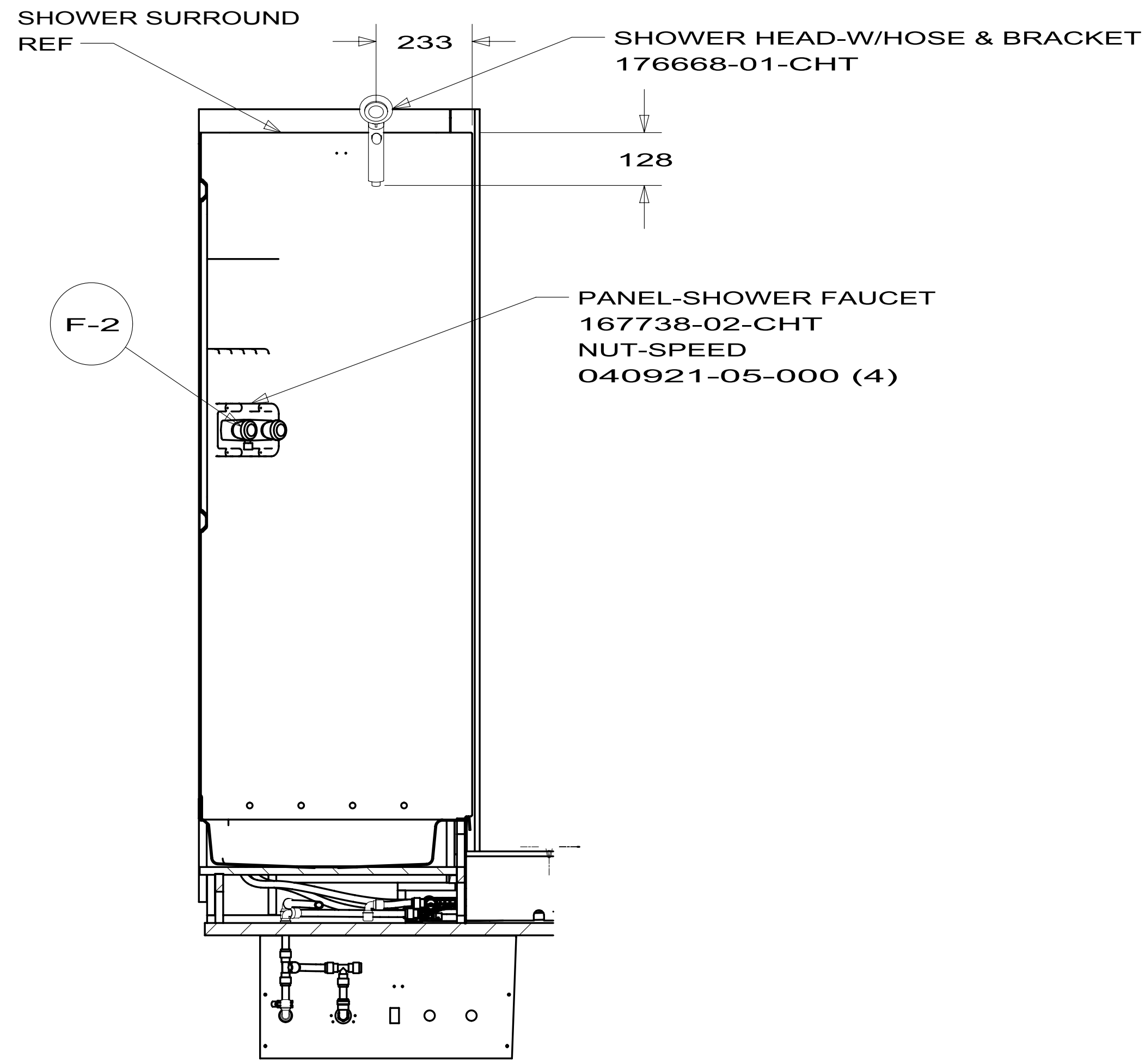
DETAIL E  
(SHOWN W/OUT CABINETS)



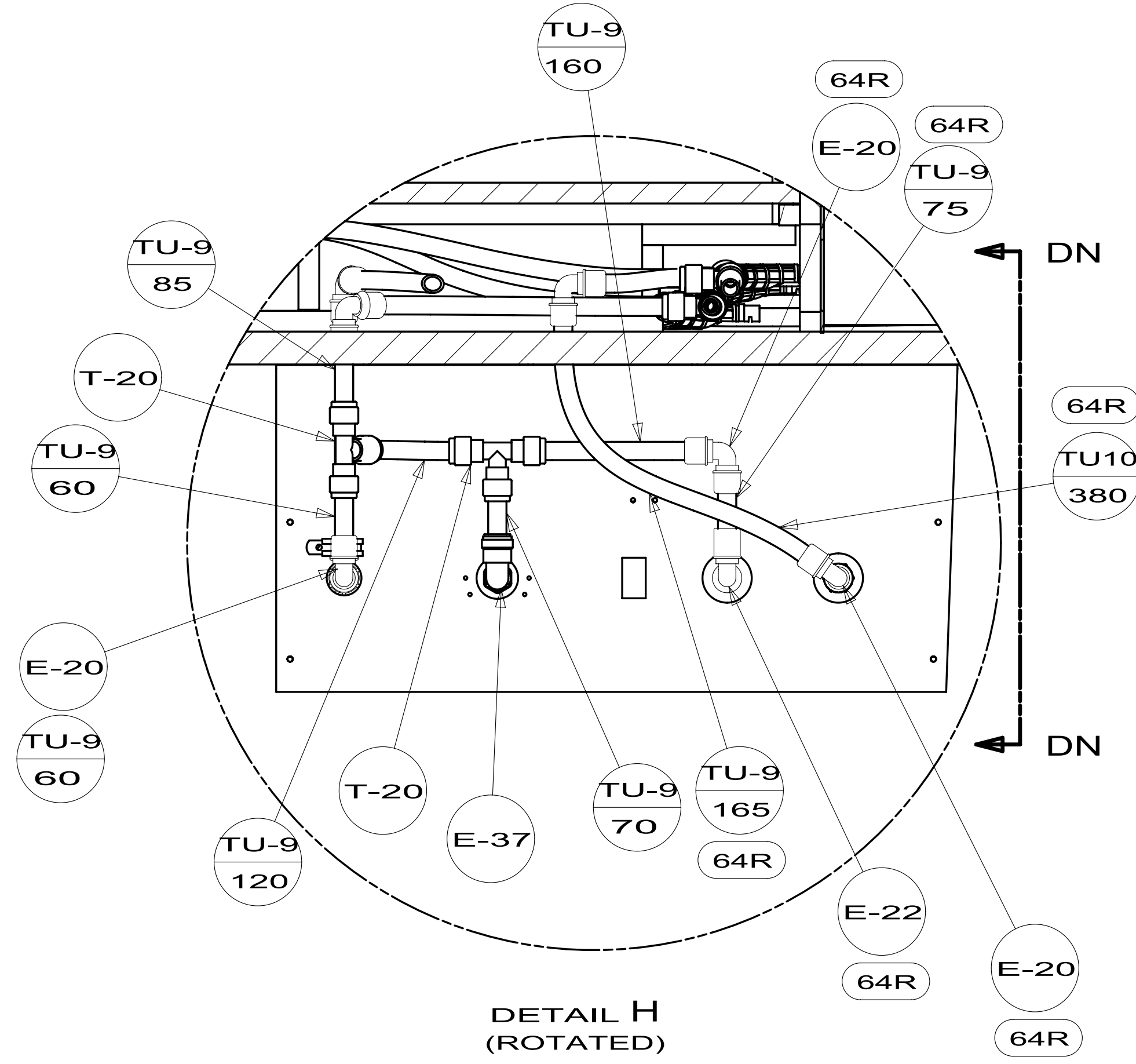
VIEW L  
6

VIEW D

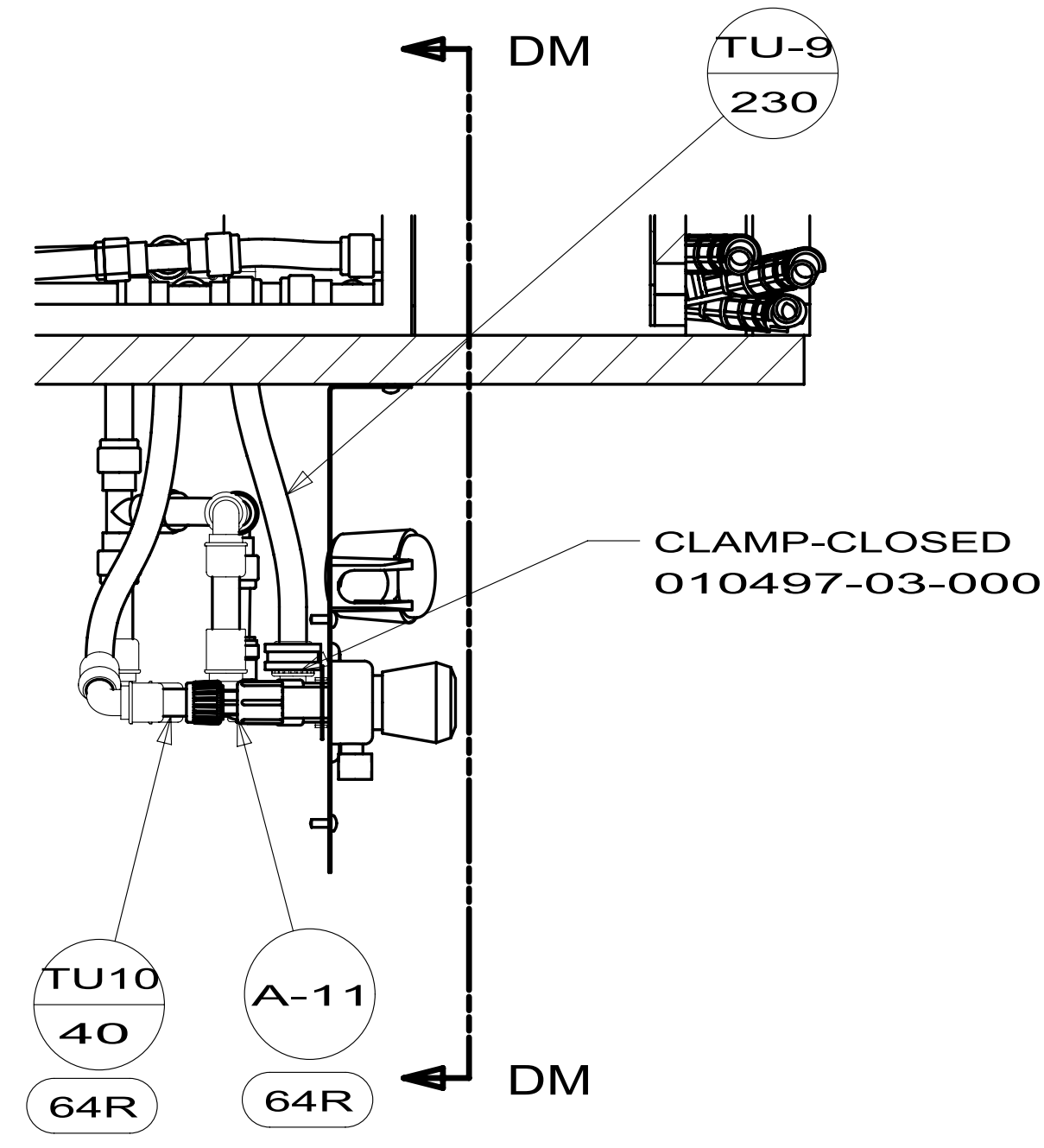
FIRST USED	12 524J	
TITLE:	DO NOT SCALE DRAWING	
	WATER SYSTEM INSTL	
SHEET 3	PART NO 179339	REV



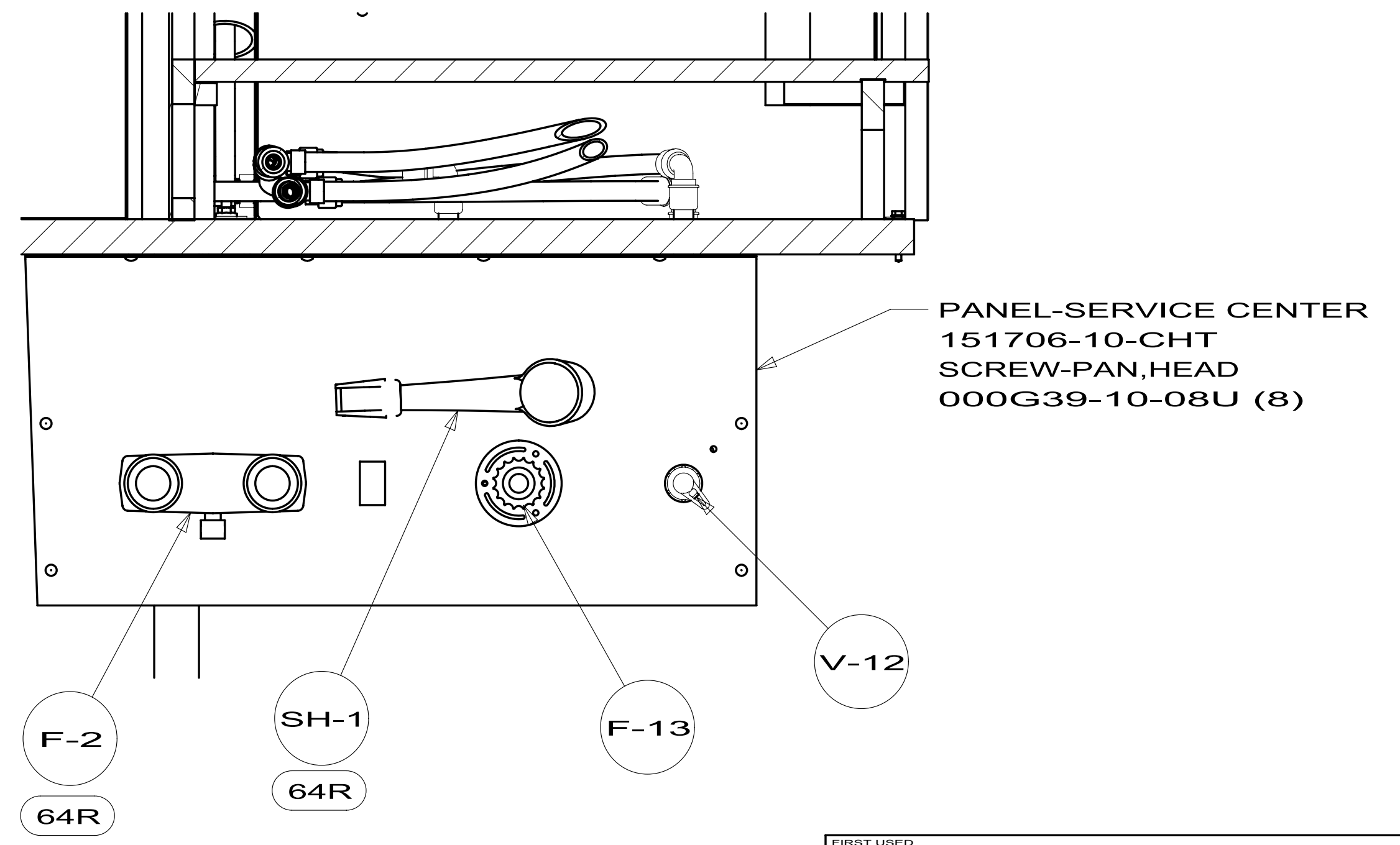
SECTION F-F



DETAIL H (ROTATED)

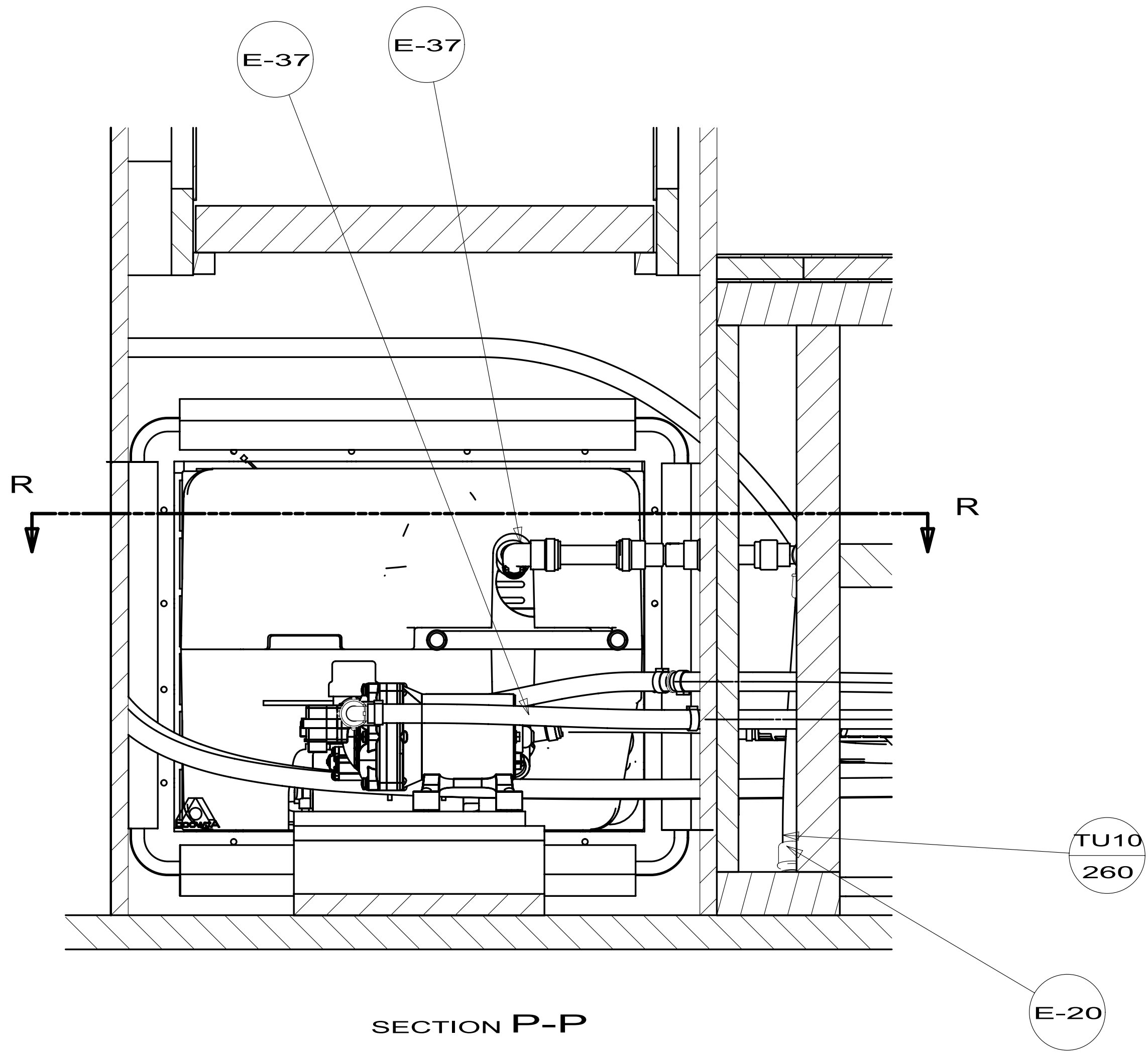


SECTION DN-DN

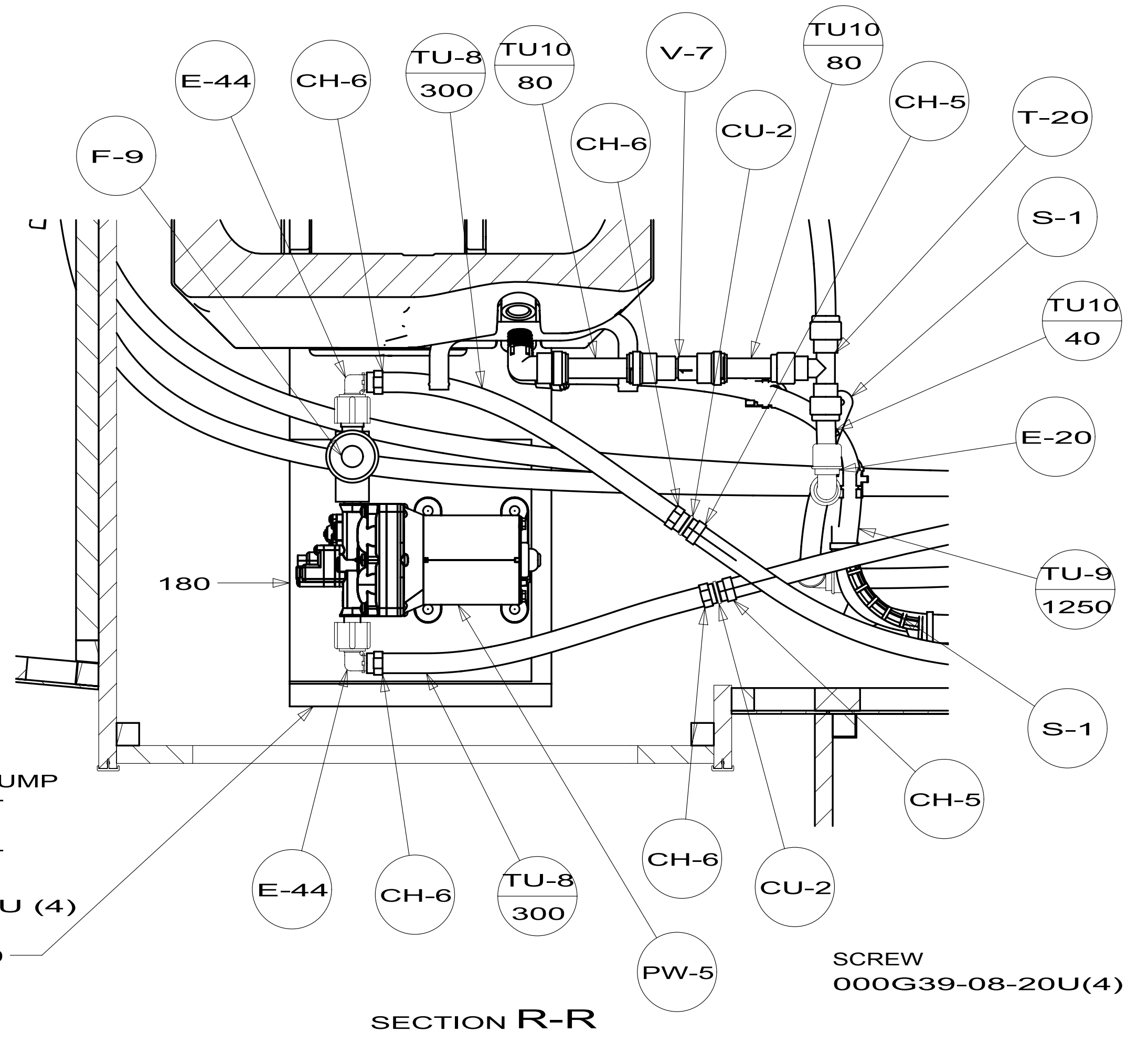


SECTION DM-DM

FIRST USED	12 524J	
TITLE:	DO NOT SCALE DRAWING	
	WATER SYSTEM INSTL	
SHEET 4	PART NO 179339	REV



SECTION P-P



SECTION R-R

- PANEL-WATER PUMP  
149477-02-CHT
- FOAM  
140364-01-CHT
- SCREW  
000G39-08-24U (4)
- PLATFORM  
144200-03-000

- SCREW  
000G39-08-20U(4)

FIRST USED	12 524J	
TITLE:	DO NOT SCALE DRAWING	
	WATER SYSTEM INSTL	
SHEET 5	PART NO 179339	REV