

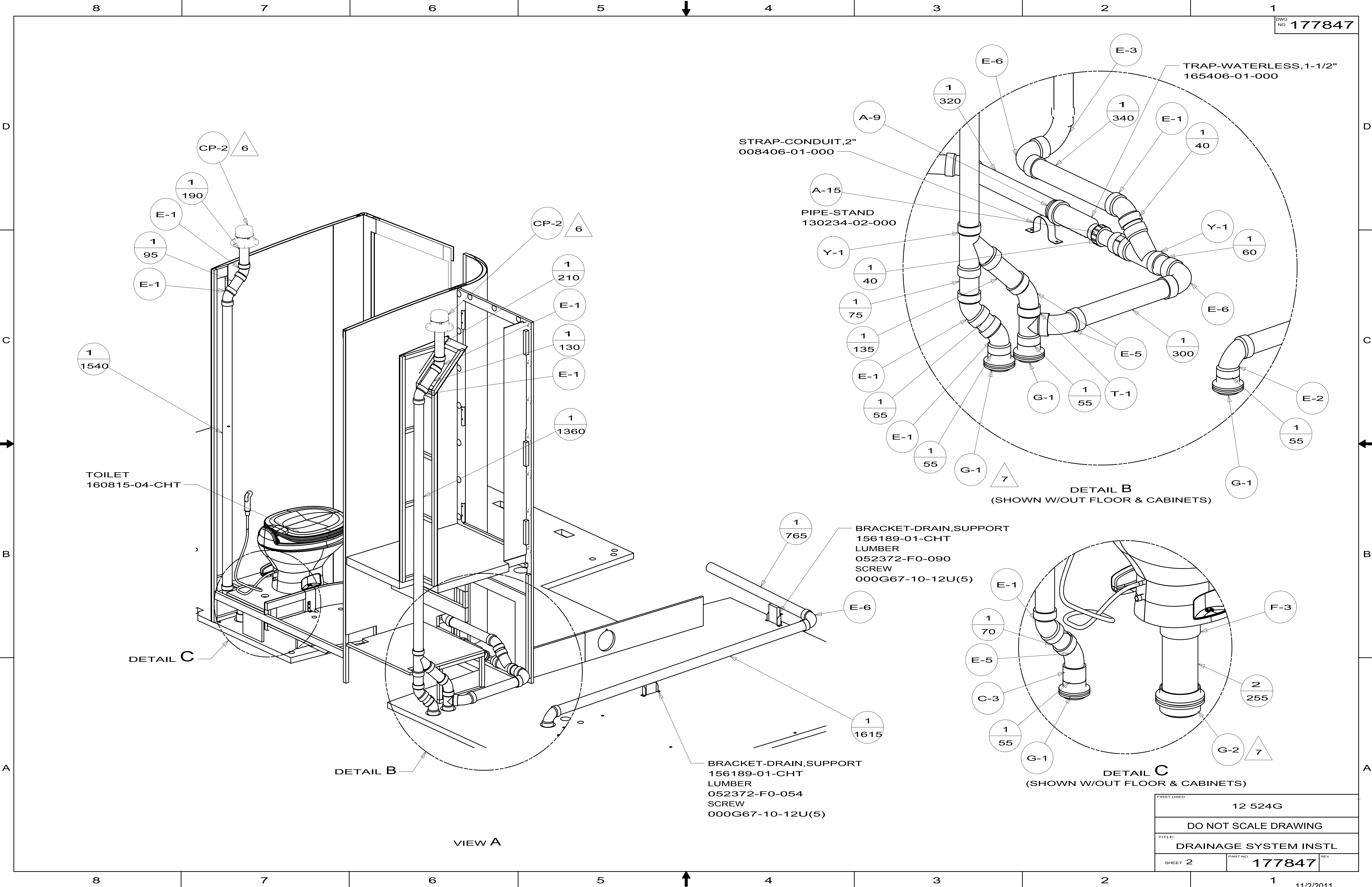
- (1B1) CODES/STANDARDS USA
- (265) CODES/STANDARDS-CSA/CMVSS
- (1JD) DRAINAGE SYSTEM-HEATED-W/O
- (23T) DRAINAGE SYSTEM-HEATED

9. FOLLOW SEWAGE MACERATOR PUMP WINTERIZATION PROCEDURE. EACH PUMP REQUIRES TWO GALLONS OF RV ANTIFREEZE 157665-02-000.
8. SECURE DRAINAGE PIPES TO CABINET USING WIRE TIE 108046-02-000, AND SCREW 000G67-10-12B AT INTERVAL OF NOT MORE THAN 4 FEET APART.
7. SECURE VENT PIPE TO FLOOR WITH CLAMP 062401-02-000 (2), SCREW 000G67-10-12B (2), BRACKET 136878-01-CHT (2).
6. VENT PIPE MUST PROJECT 51 MIN AND 64 MAX ABOVE ROOF FOR PROPER FIT AND FUNCTION.
5. SEAL AROUND SHOWER WITH SILICONE.
4. PREP THE SURFACE PER MANUFACTURERS INSTRUCTIONS, THEN APPLY ADHESIVE 067788-04-000 (0.10) ON PREPARED AREA BEFORE APPLYING THE HEATING PAD PER MANUFACTURERS INSTRUCTIONS.
3. ALL PIPE AND FITTINGS TO BE ASSEMBLED WITH SOLVENT 004020-01-000 (USA), 004020-02-000 (CAN)
2. SLOPE OF TRAP ARM MUST BE 6 PER 305 mm.
1. SLOPE OF HORIZONTAL PIPING TO BE MINIMUM OF 3 PER 305 mm.

		COPYRIGHT 2011 WINNEBAGO INDUSTRIES, INC.
DTR	ORIG. DATE	ALL DIMENSIONS ARE IN MILLIMETERS
CHKR		
P.E.		
M.E.	FIRST USED	
DSNR	12 524G	
UNSPECIFIED TOLERANCES ARE: WHOLE DIM (X) : 3 ONE-PLACE (X.X) : 1.5 TWO-PLACE (X.XX) : 0.50 ANGLE : 1°		MATERIAL: REFER TO ES0018 FOR FASTENER TIGHTENING GUIDELINES
THIRD ANGLE PROJECTION		
DO NOT SCALE DRAWING		
TITLE: <b>DRAINAGE SYSTEM INSTL</b>		
SHEET 1 OF 5	PART NO	177847
REF:	1	11/2/2011

FOR  
DRAINAGE  
CALLOUTS  
SEE DWG NO  
116229-01-000

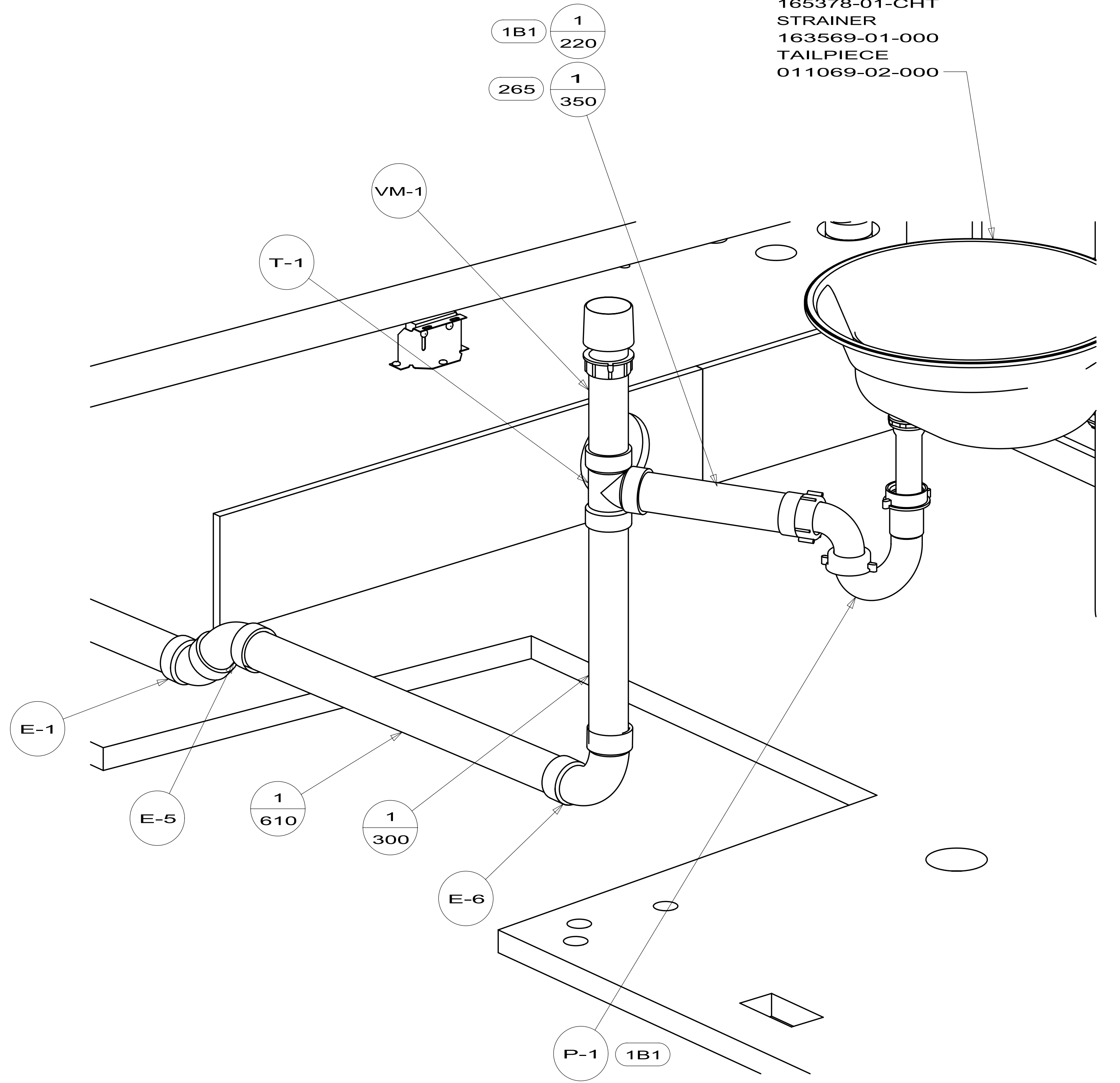
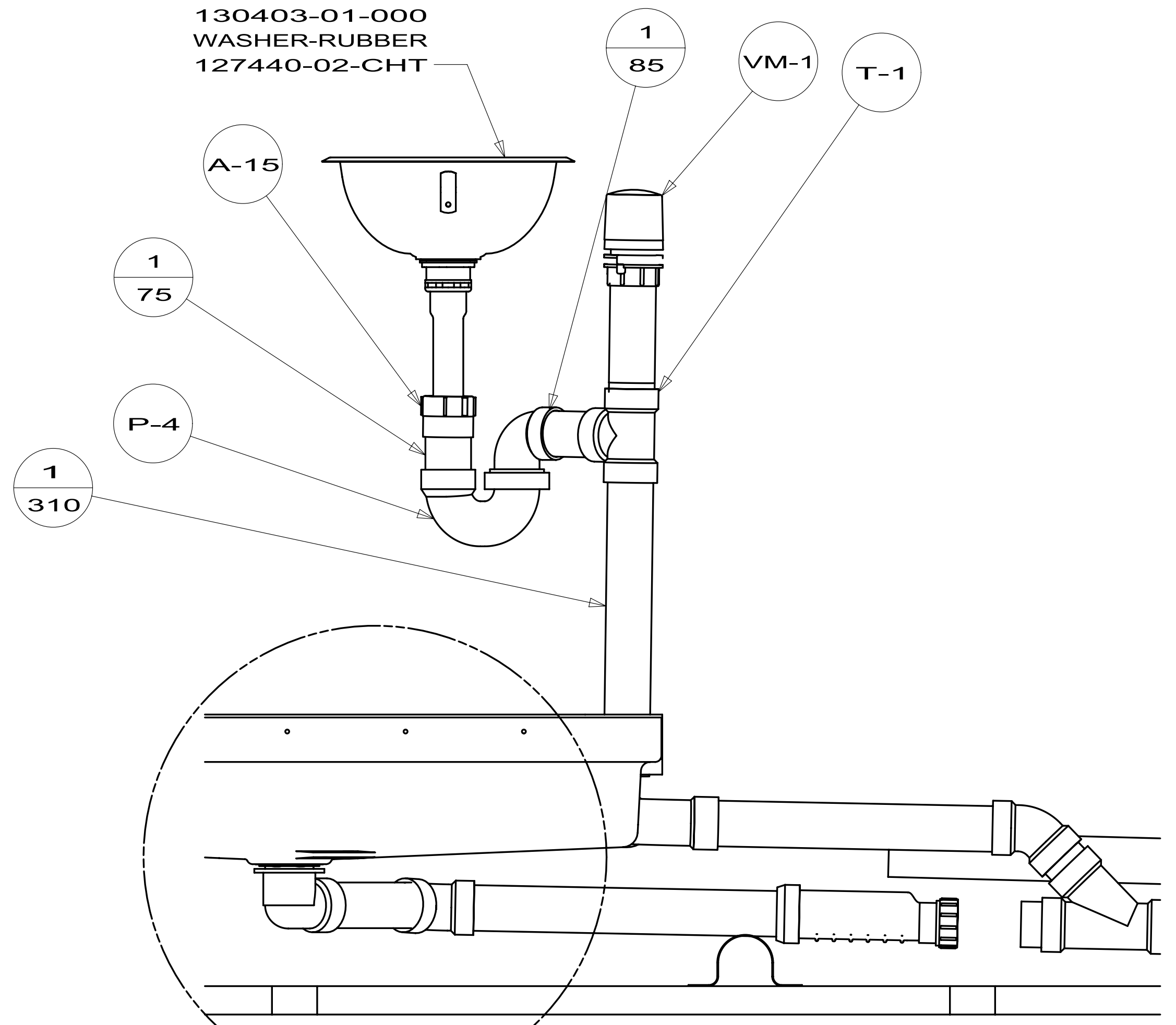
NOTES:



FIRST USED	12 524G	
TITLE:	DO NOT SCALE DRAWING	
TITLE:	DRAINAGE SYSTEM INSTL	
SHEET 2	PART NO	177847
	REV	

SINK-LAVATORY  
 174018-01-CHT  
 SEAL  
 091255-02-000(A/R)  
 STRAINER  
 163569-01-000  
 TAILPIECE  
 011069-05-000  
 NUT  
 130403-01-000  
 WASHER-RUBBER  
 127440-02-CHT

SINK-GALLEY  
 165378-01-CHT  
 STRAINER  
 163569-01-000  
 TAILPIECE  
 011069-02-000



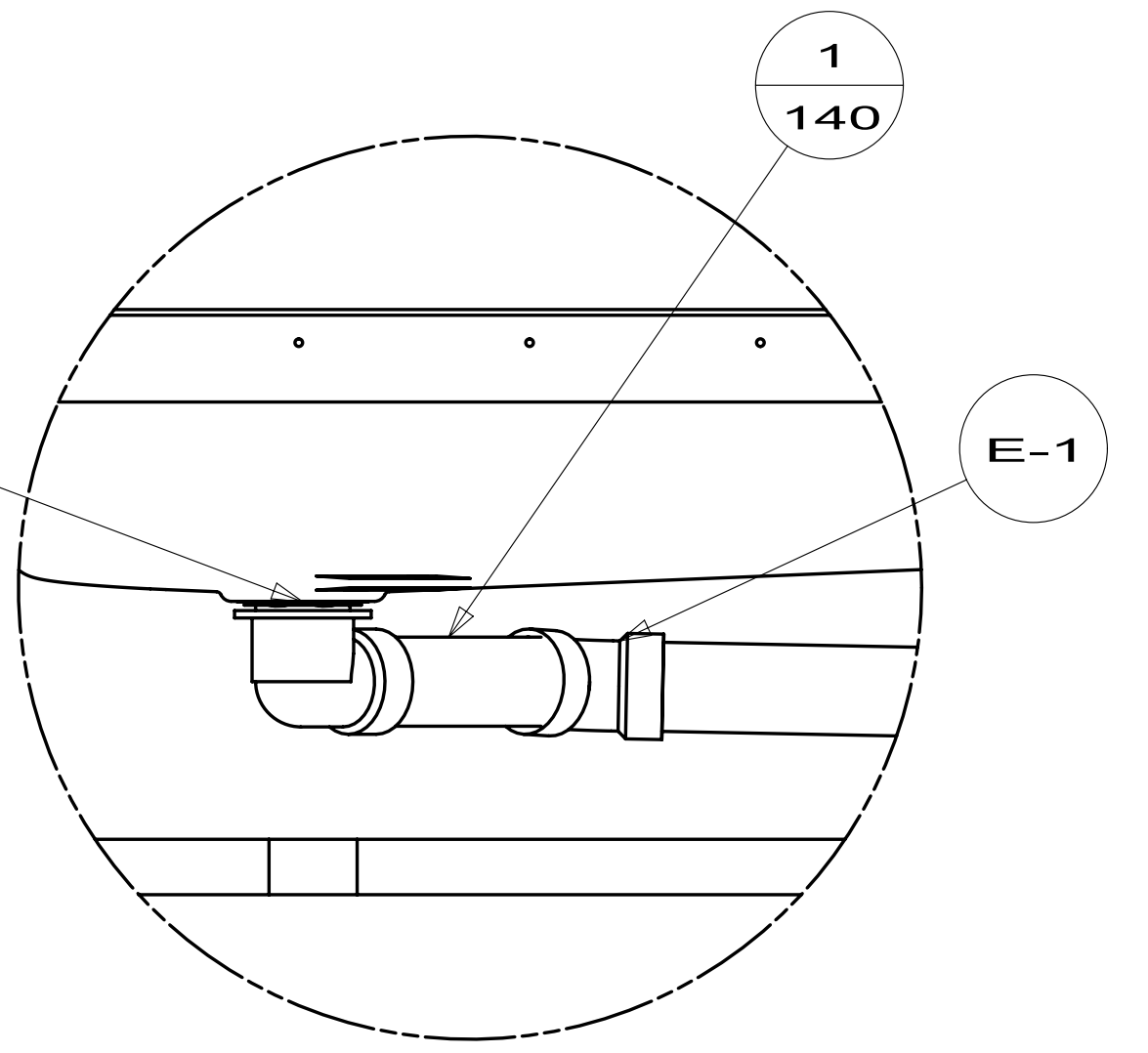
VIEW D

VIEW E

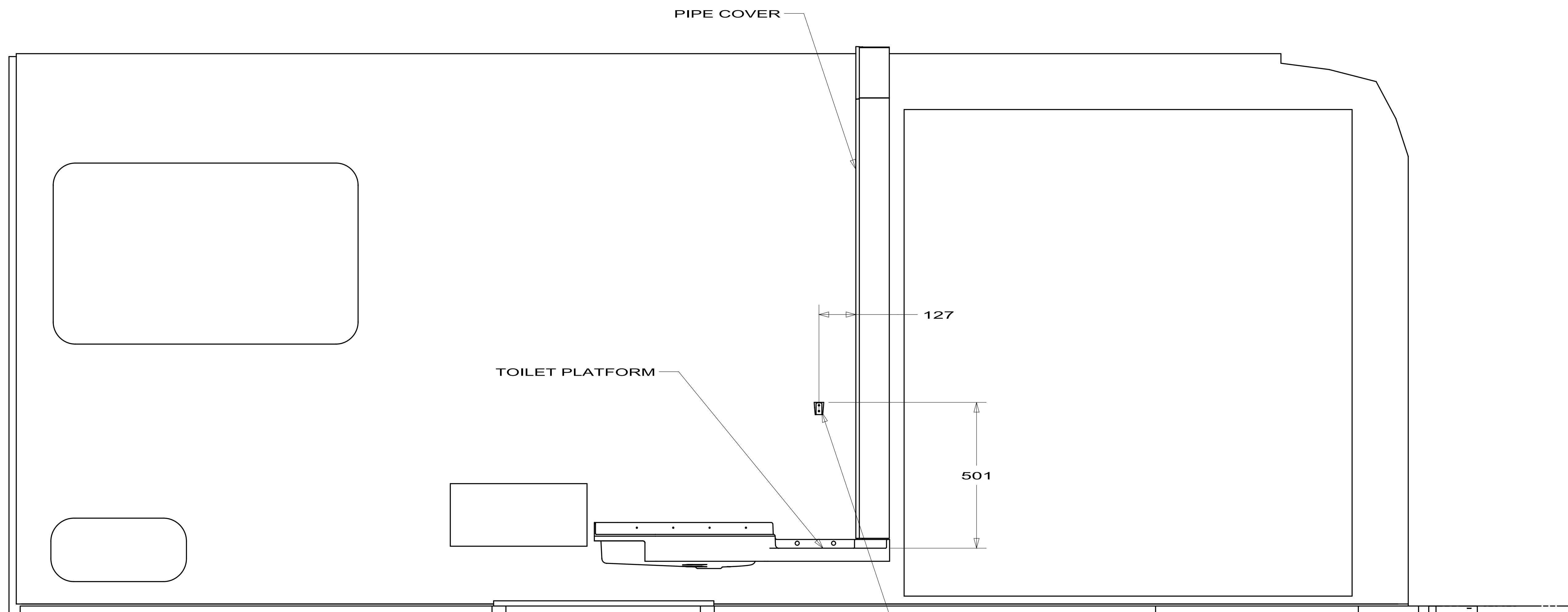
DETAIL J

DETAIL J  
 (SHOWN W/OUT CABINETS)

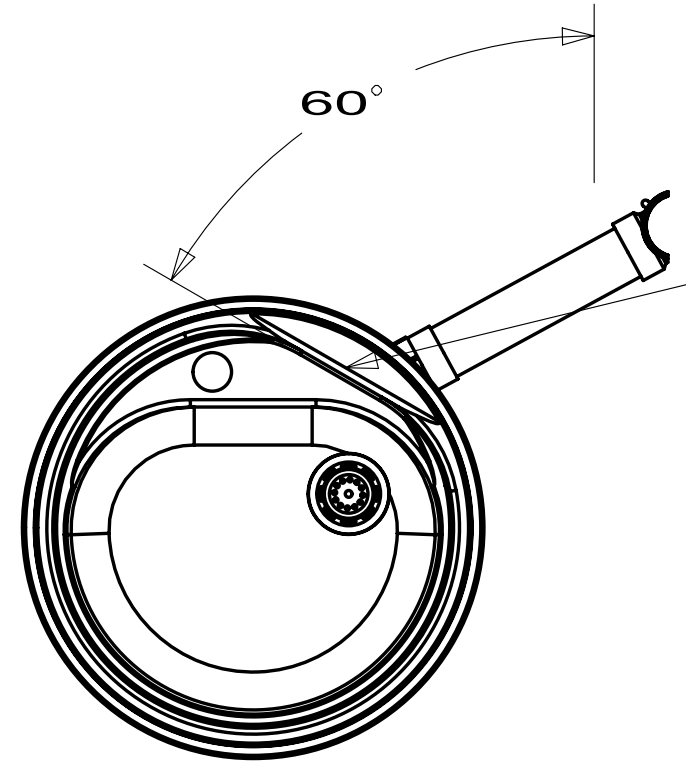
SHOWER INSTL  
 174125-02-000  
 STRAINER  
 066440-01-000  
 SEALANT  
 084456-01-000  
 ELBOW  
 131486-01-000



FIRST USED	12 524G	
TITLE:	DO NOT SCALE DRAWING	
TITLE:	DRAINAGE SYSTEM INSTL	
SHEET 3	PART NO 177847	REV



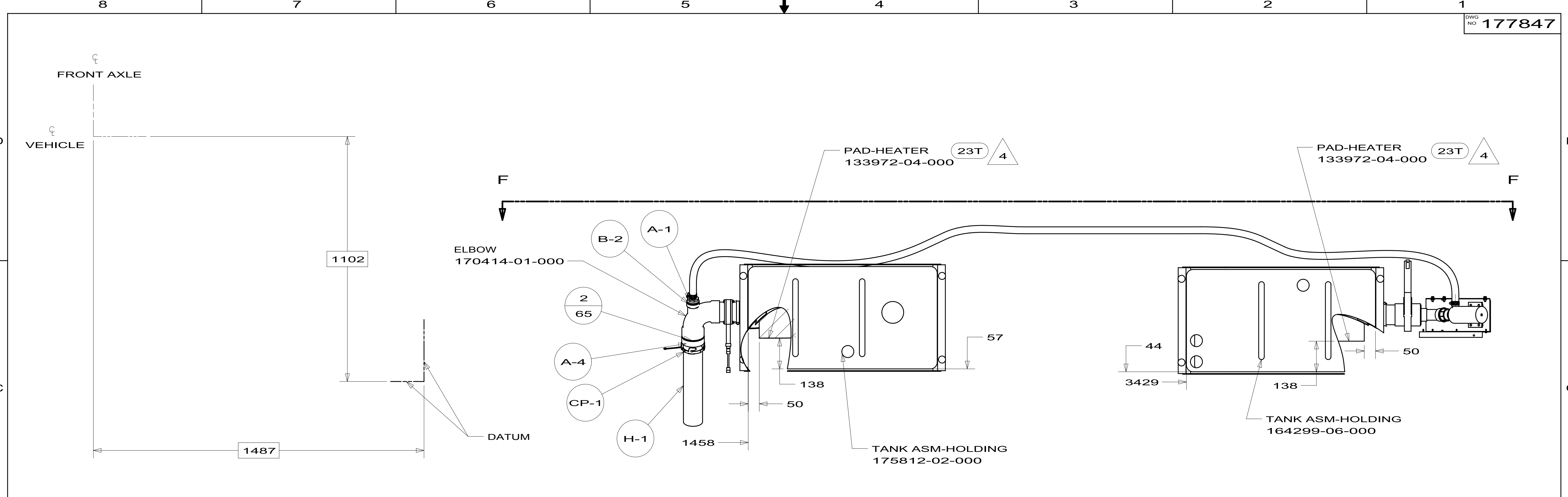
VIEW G  
(ROTATED)



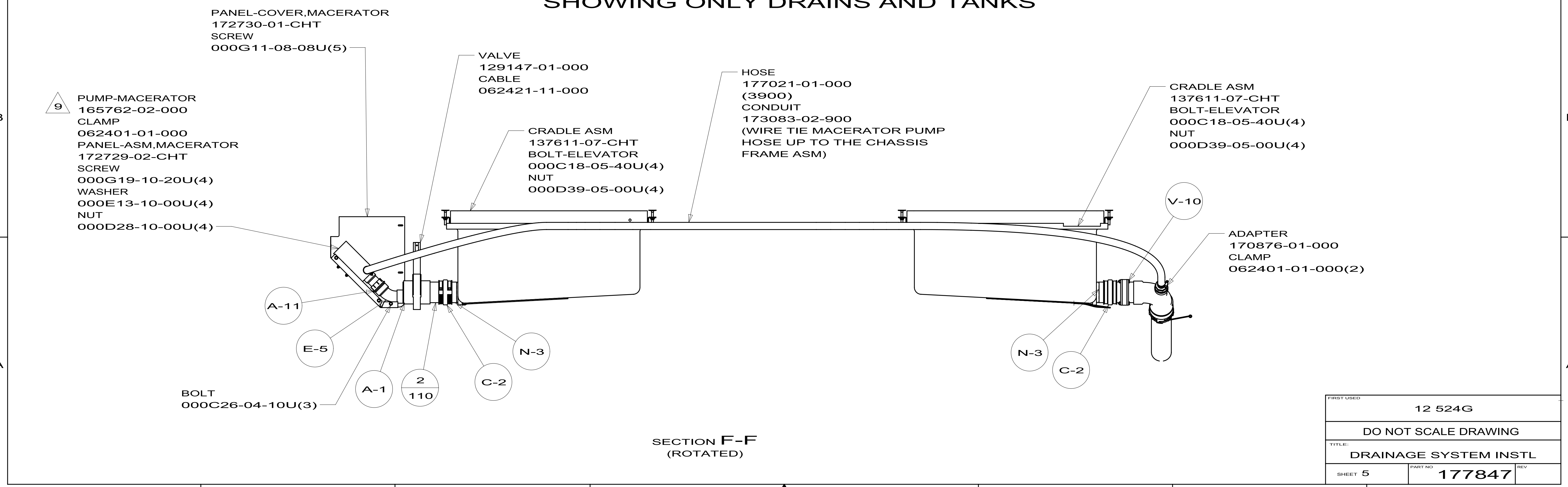
GALLEY SINK  
LID HINGE AREA  
REF

DETAIL H

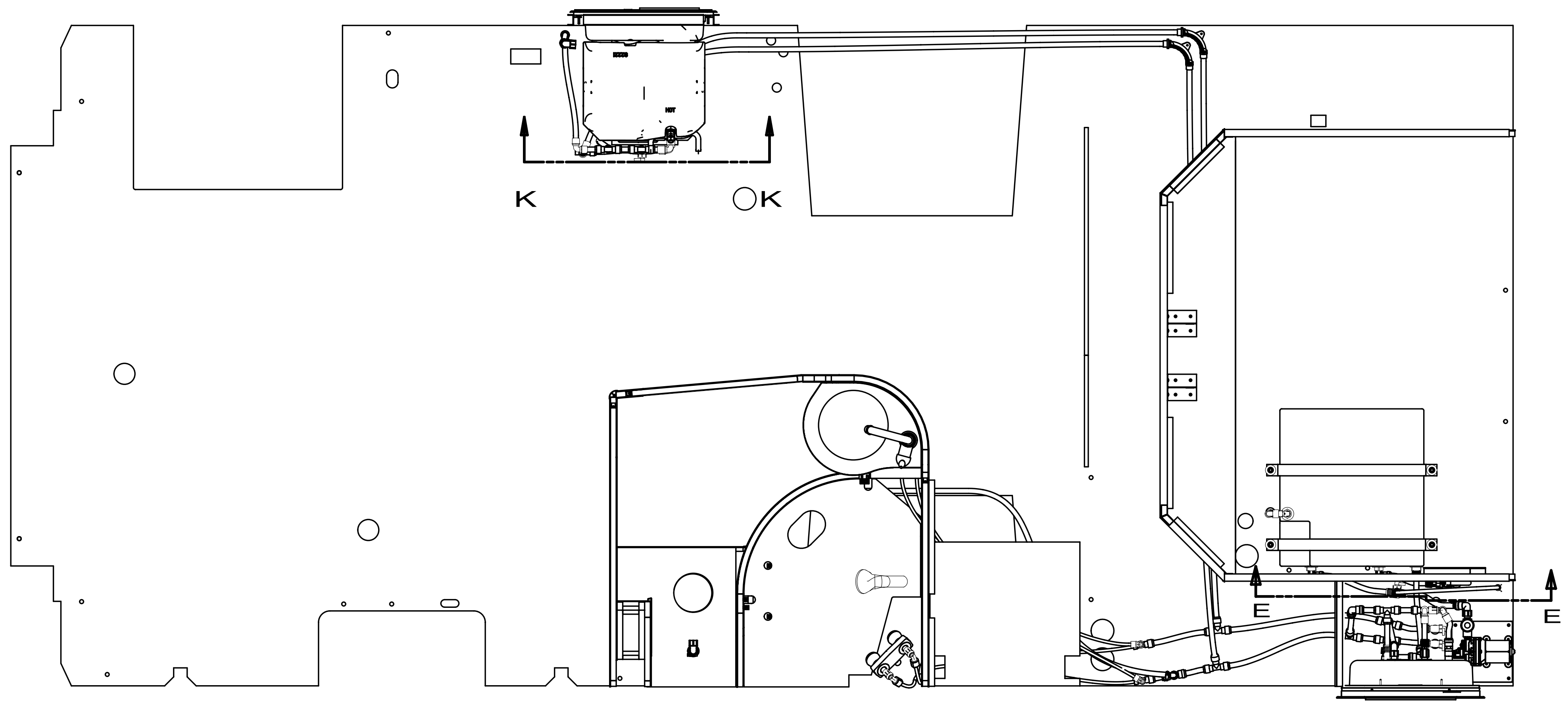
FIRST USED		
12 524G		
DO NOT SCALE DRAWING		
TITLE: DRAINAGE SYSTEM INSTL		
SHEET 4	PART NO 177847	REV



SHOWING ONLY DRAINS AND TANKS



FIRST USED	12 524G	
TITLE:	DO NOT SCALE DRAWING	
TITLE:	DRAINAGE SYSTEM INSTL	
SHEET 5	PART NO 177847	REV



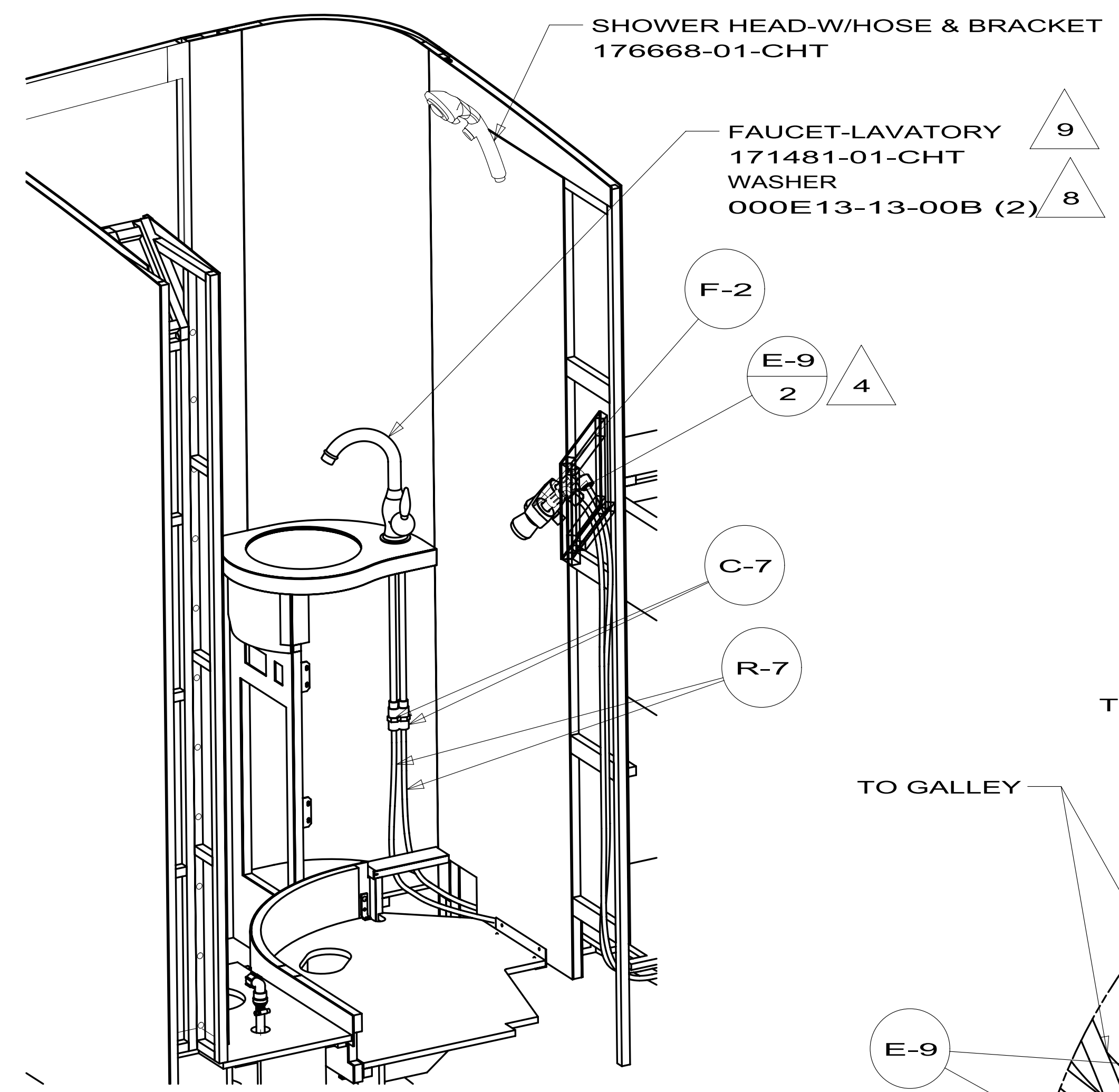
- 53E WINTERIZATION PACKAGE
- 501 WATER PURIFIER WITHOUT
- 29B WATER PURIFIER
- 53B WTR HTR-6 GAL ELEC/LP GAS

- 9 LAVATORY FAUCET TO BE TURNED SO CONTROLS ARE ON LEFT SIDE.
- 8 INSTALL BETWEEN MOUNTING PLATE AND RETAINING NUTS.
- 7 BOLTS TO BE INSTALLED IN FLOOR ASM PRIOR TO THE FLOOR BEING INSTALLED ON FRAME ASM.
- 6 ADD TEFLON TAPE 010405-03-000.
- 5 ADD TEFLON TAPE 010405-02-000.
- 4 ADD TEFLON TAPE 010405-01-000.
- 3. ALL TUBING TO BE SECURED AT 1200 INTERVALS MAXIMUM WITH CLAMP 010495-01-000 AND SCREW 000G67-10-12B OR EQUIVALENT.
- 2. TUBING TO BE INSTALLED WITH SUFFICIENT SLOPE TO PROVIDE DRAINAGE TO NEAREST VALVE.
- 1. PLASTIC FITTINGS TO BE SEALED WITH SEALANT 084456-01-000.

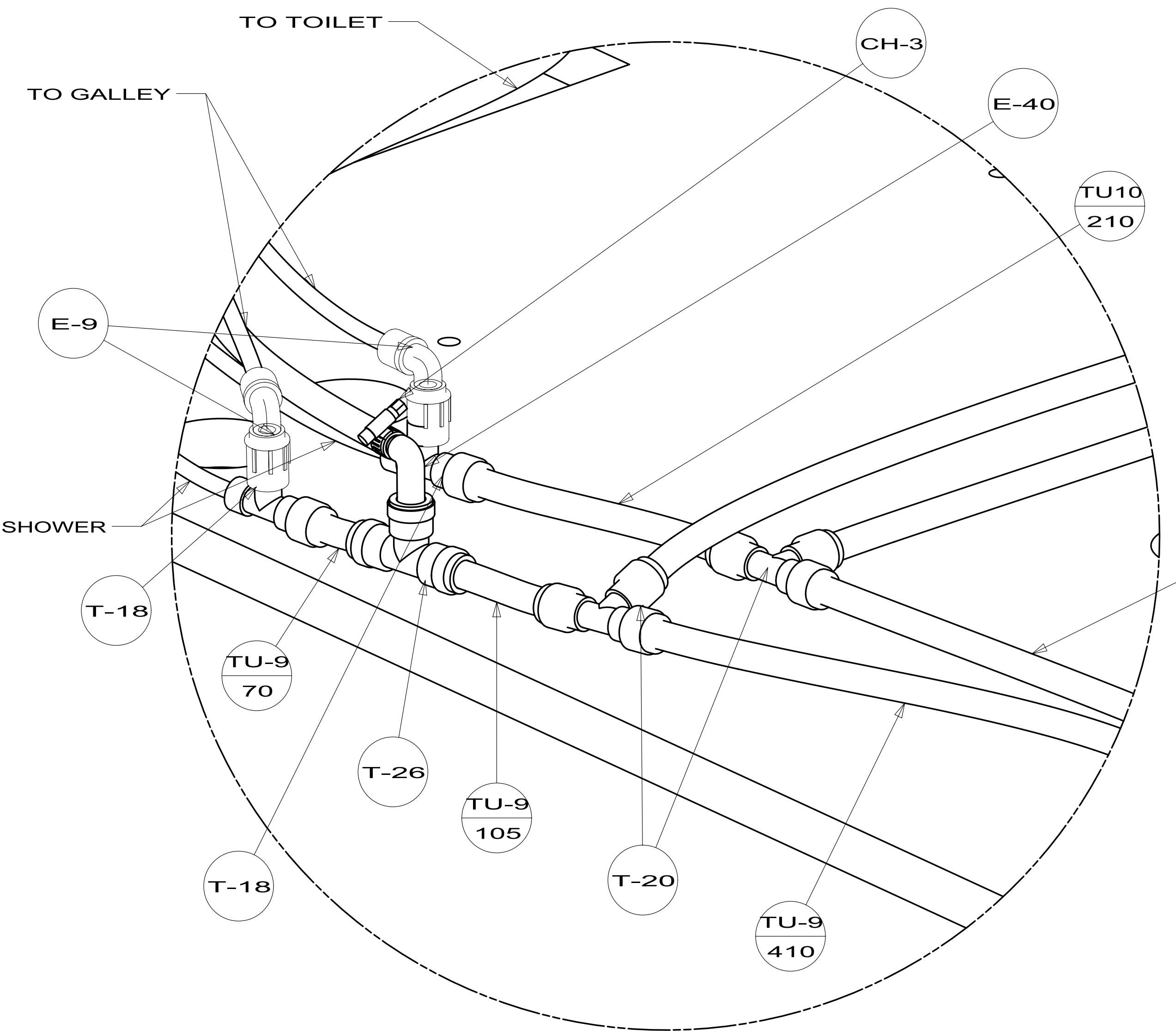
		COPYRIGHT 2011 WINNEBAGO INDUSTRIES, INC.
DTR	ORIG. DATE	
CHKR	ALL DIMENSIONS ARE IN MILLIMETERS	
P.E.		
M.E.	FIRST USED	
DSNR	12 524G	
UNSPECIFIED TOLERANCES ARE:		MATERIAL:
WHOLE DIM (X)	: 3	
ONE-PLACE (X.X)	: 1.5	
TWO-PLACE (X.XX)	: 0.50	
ANGLE	: 1°	
THIRD ANGLE PROJECTION		
DO NOT SCALE DRAWING		REFER TO ES0018 FOR FASTENER TIGHTENING GUIDELINES
TITLE: WATER SYSTEM INSTL		
SHEET 1 OF 4	PART NO 177853	REV
REF:	1	6/10/2011

FOR WATER CALLOUTS SEE DWG NO 116230-01-000

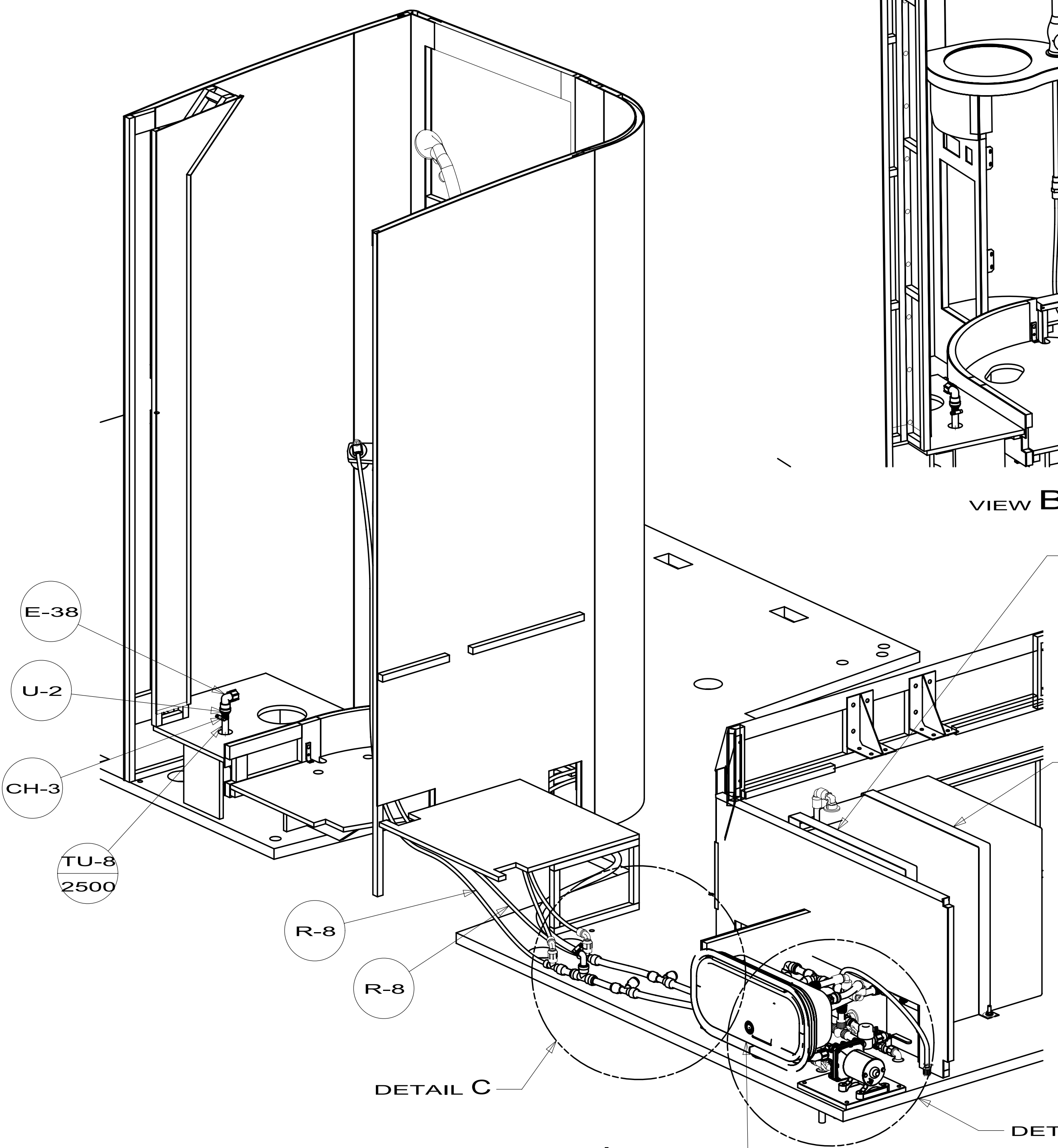




VIEW B



DETAIL C (SHOWN W/OUT CABINETS)



VIEW A

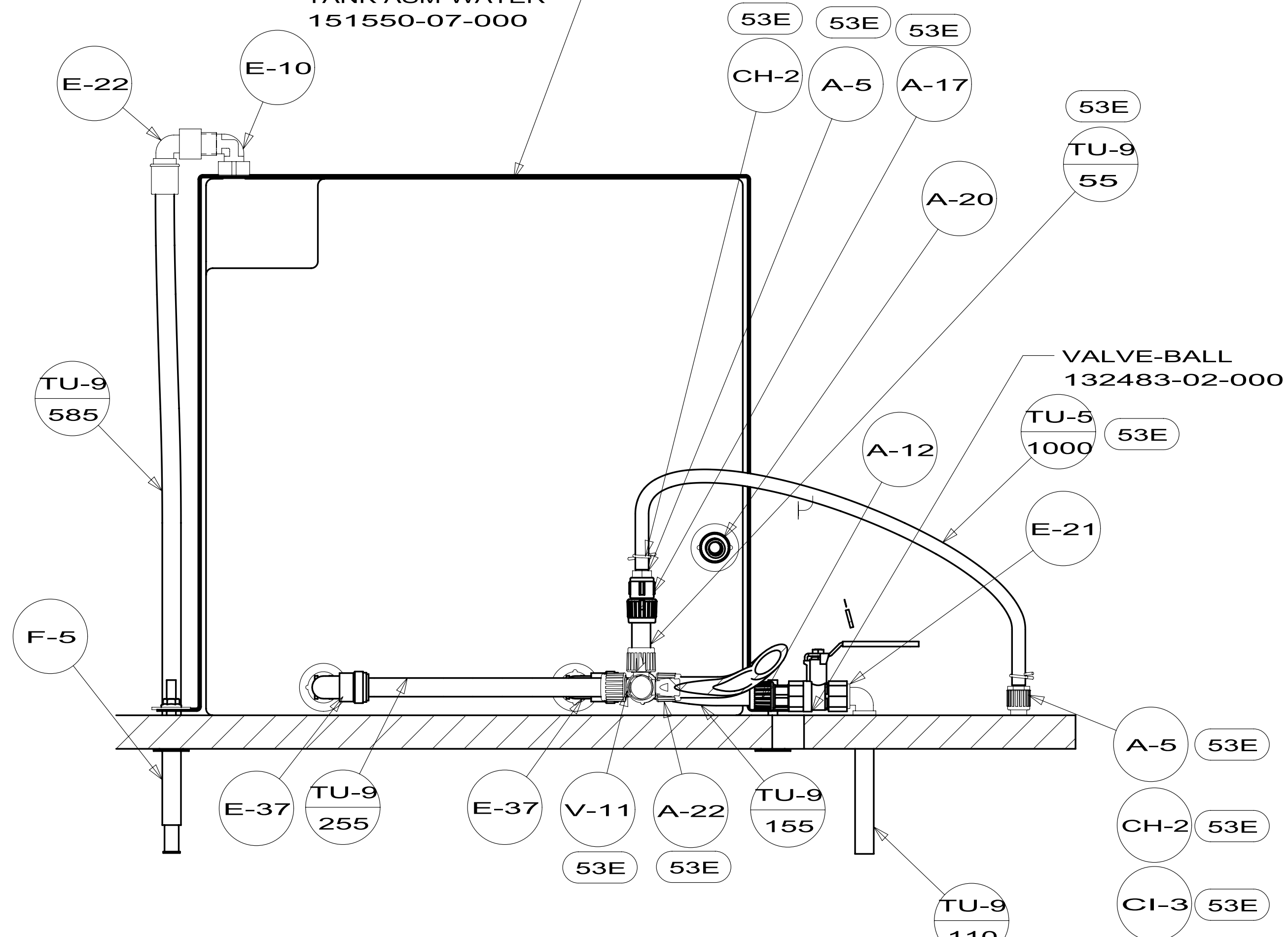
- STRAP 118994-04-CHT
- ELEVATOR BOLT 000C18-05-40U(2)
- NUT 000D39-05-00U(2)
- WASHER 000E13-22-00U(2)

- STRAP 118994-02-CHT
- ELEVATOR BOLT 000C18-05-40U(2)
- NUT 000D39-05-00U(2)
- WASHER 000E13-22-00U(2)

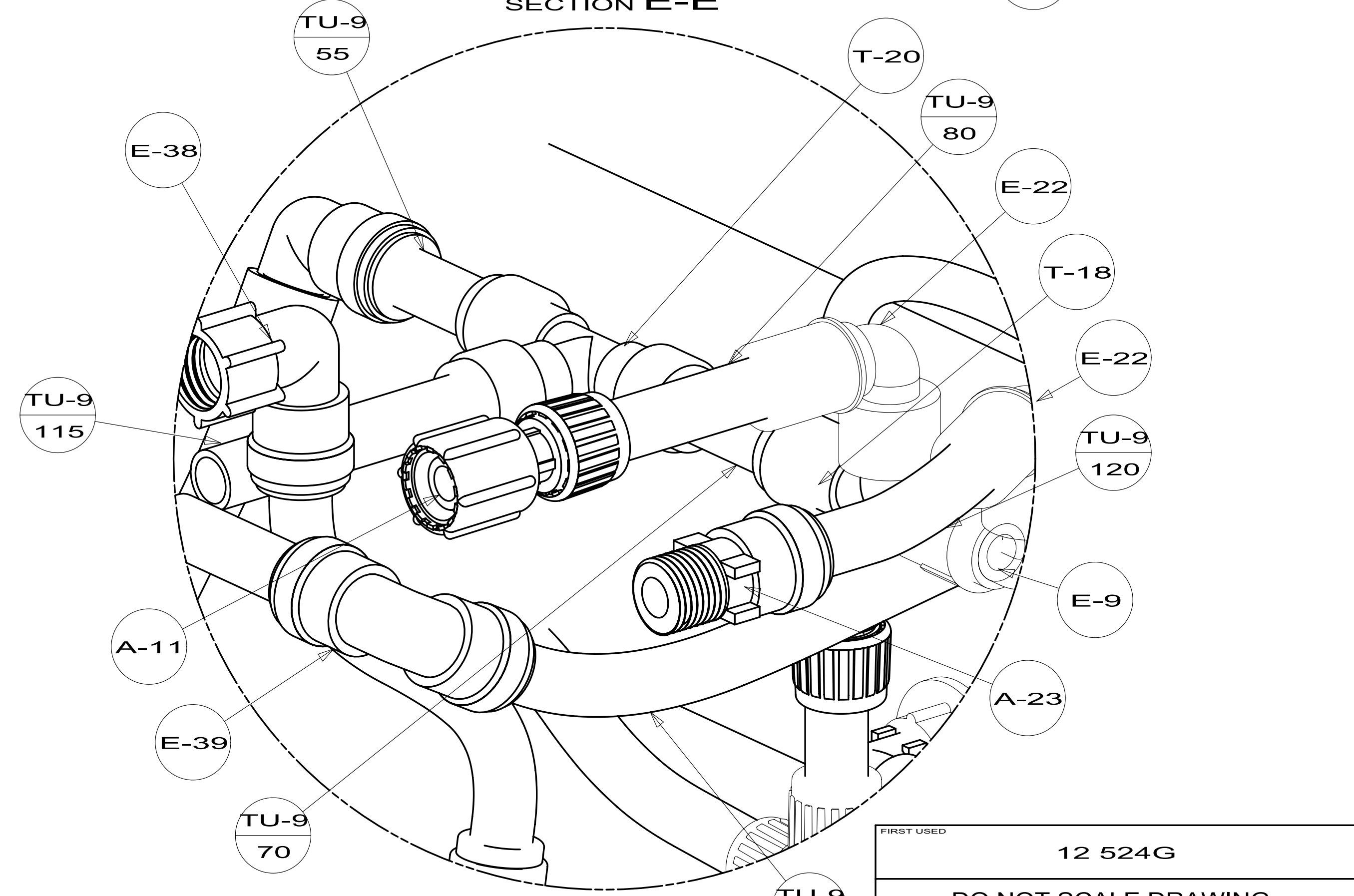
COMPARTMENT ASM-SHOWER  
155264-08-XXX

FIRST USED	12 524G	
TITLE:	DO NOT SCALE DRAWING	
	WATER SYSTEM INSTL	
SHEET 2	PART NO	177853
	REV	

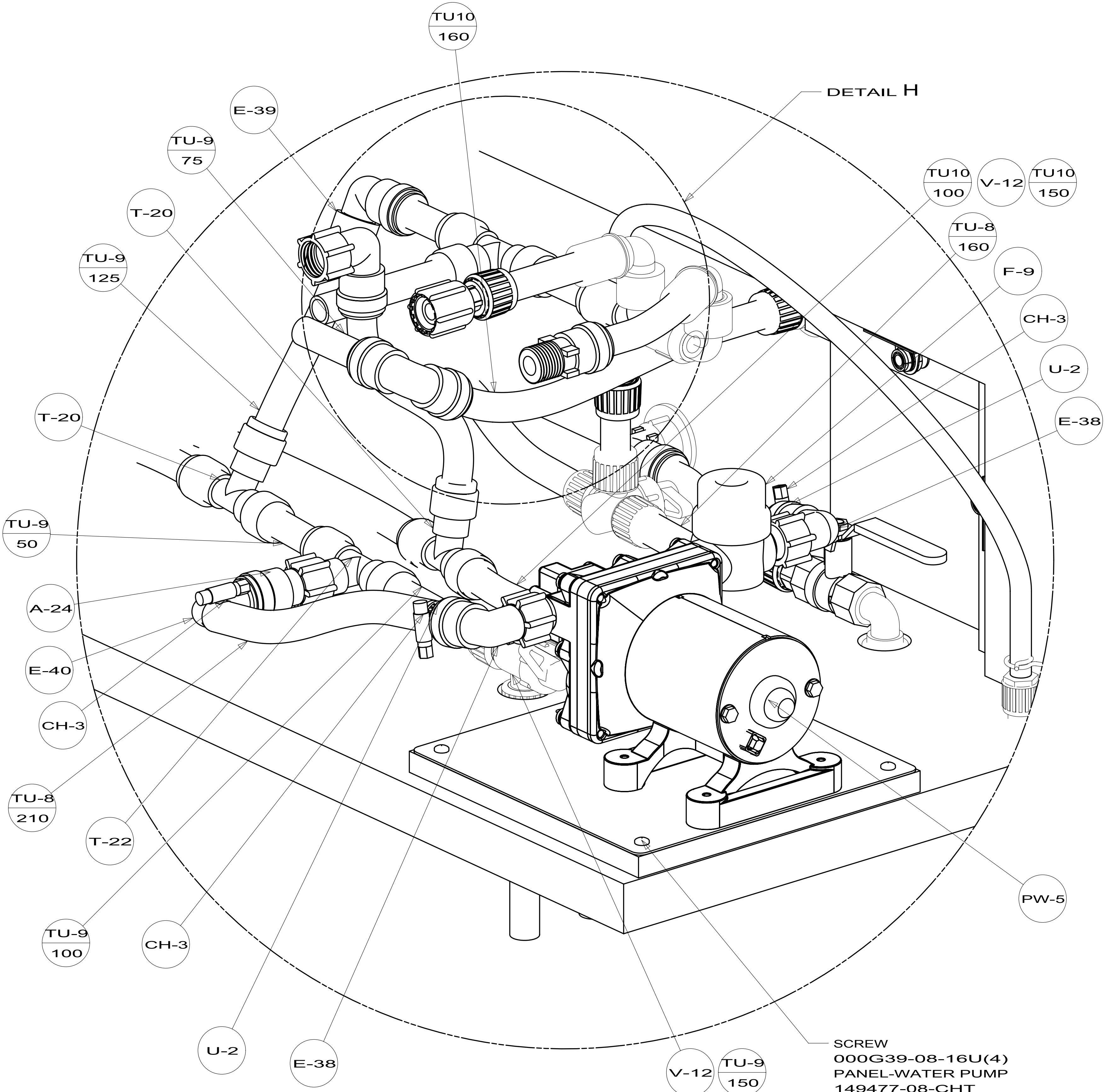
TANK ASM-WATER  
151550-07-000



SECTION E-E



DETAIL H  
(SHOWN W/OUT COMPARTMENT ASM-SHOWER)

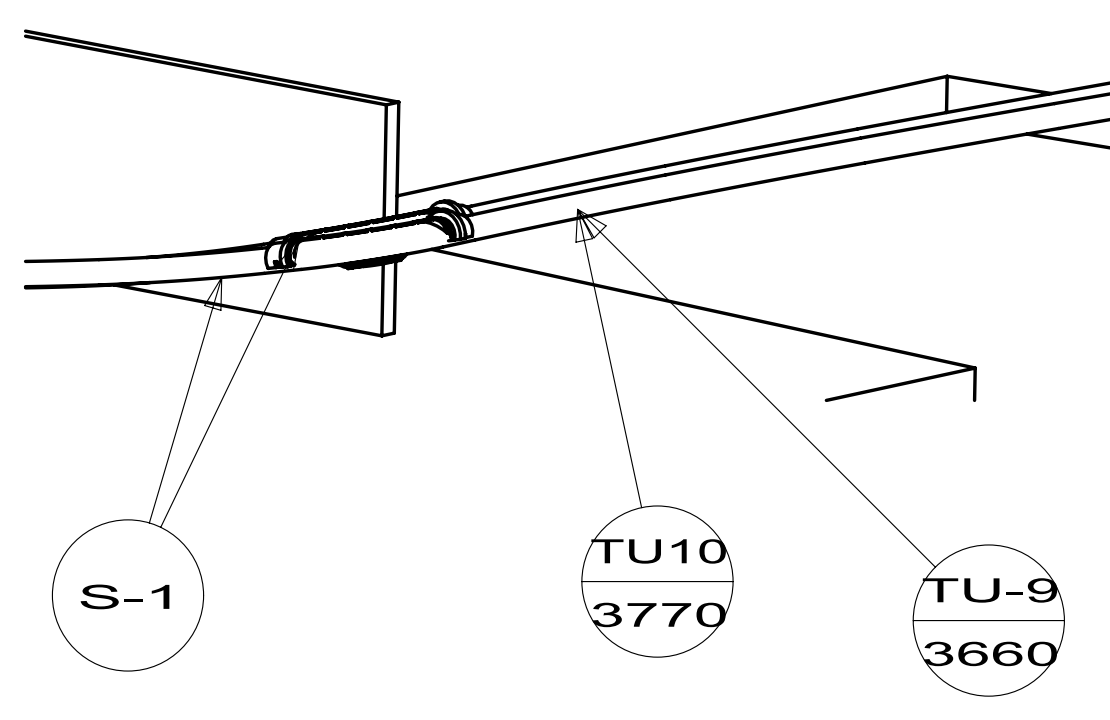
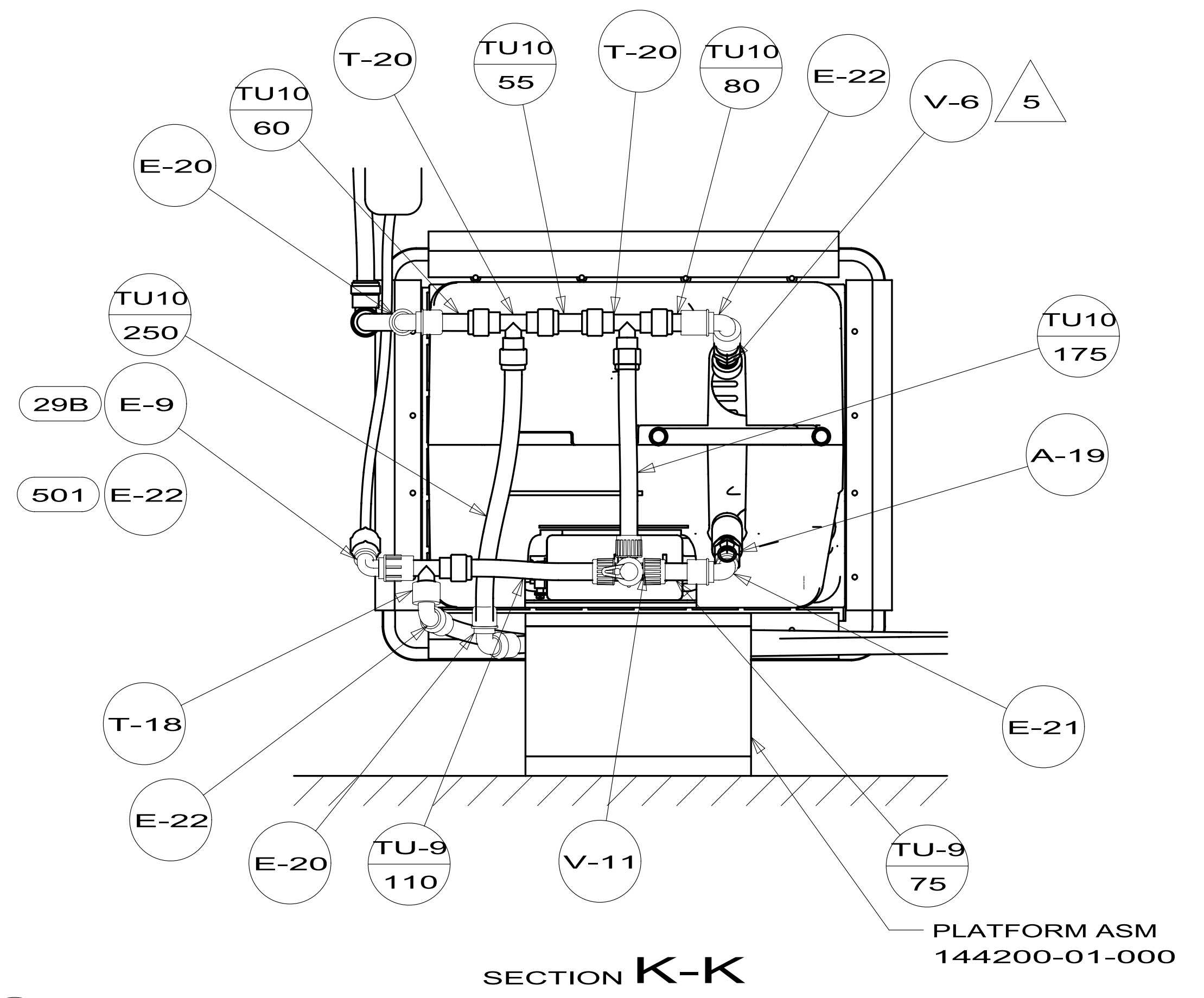
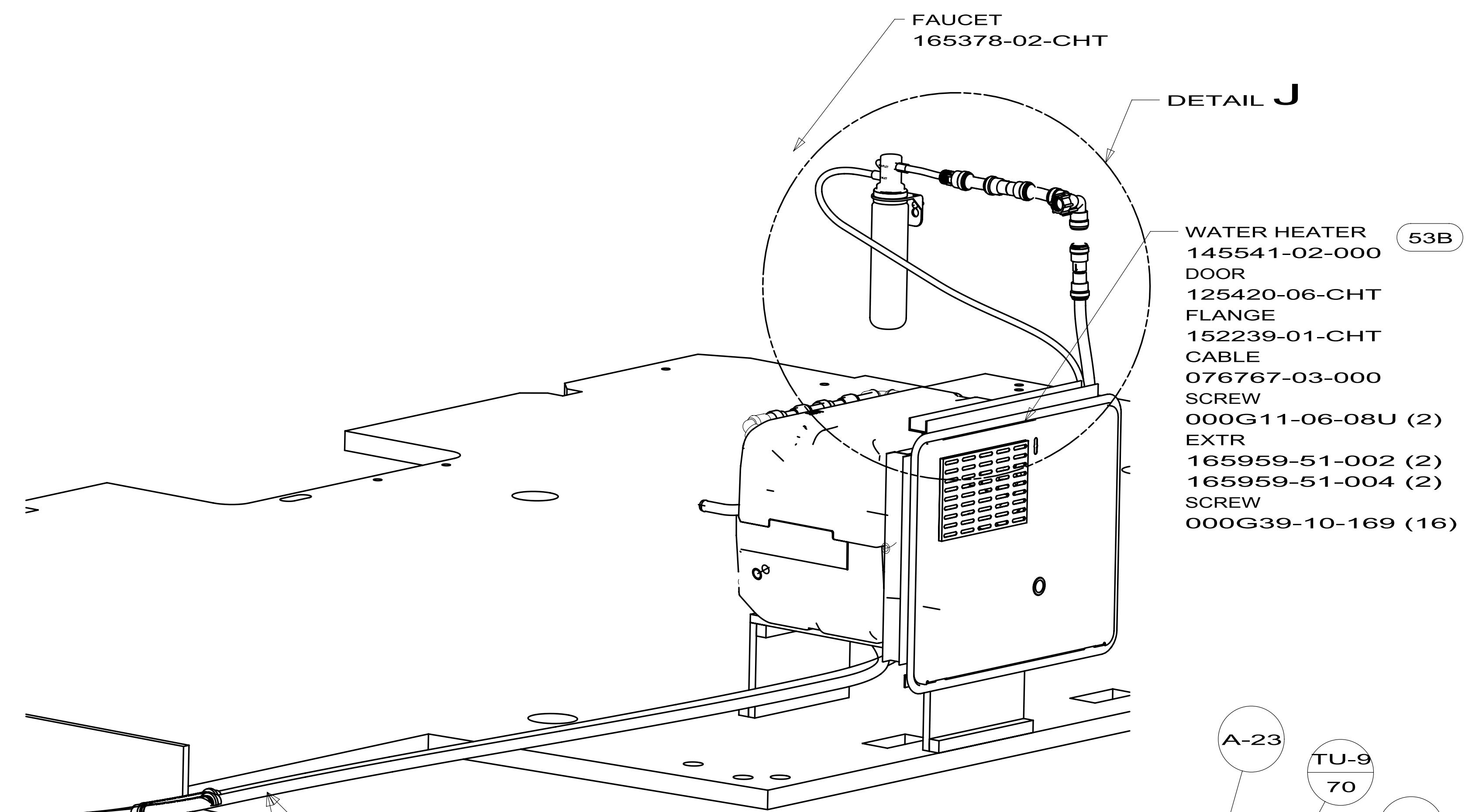


DETAIL D  
(SHOWN W/OUT COMPARTMENT ASM-SHOWER)

- SCREW 000G39-08-16U(4)
- PANEL-WATER PUMP 149477-08-CHT
- FOAM 140364-01-CHT
- SCREW 000G39-08-24U(4)

FIRST USED	12 524G	
TITLE:	DO NOT SCALE DRAWING	
SHEET 3	PART NO	177853
	REV	

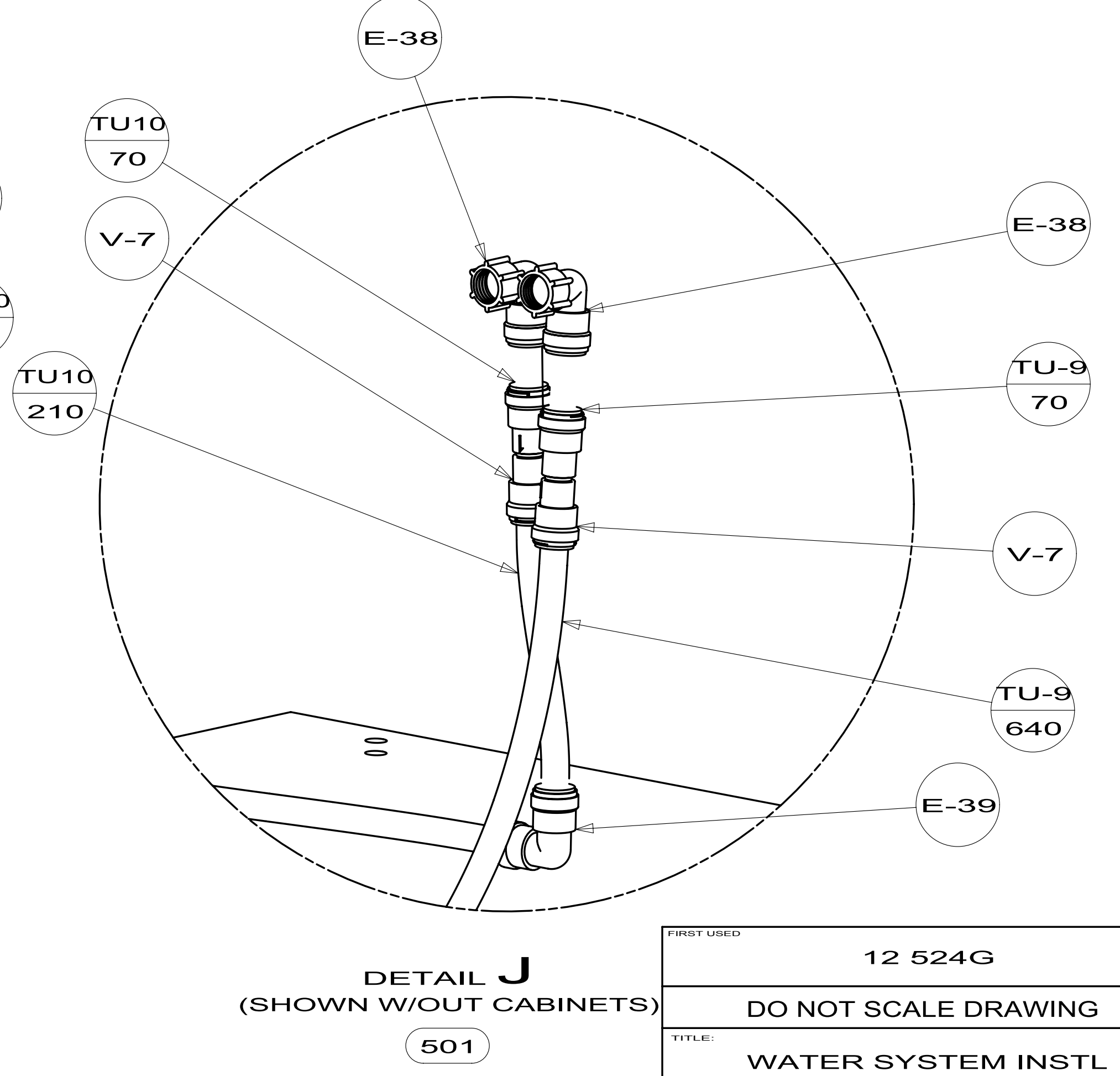
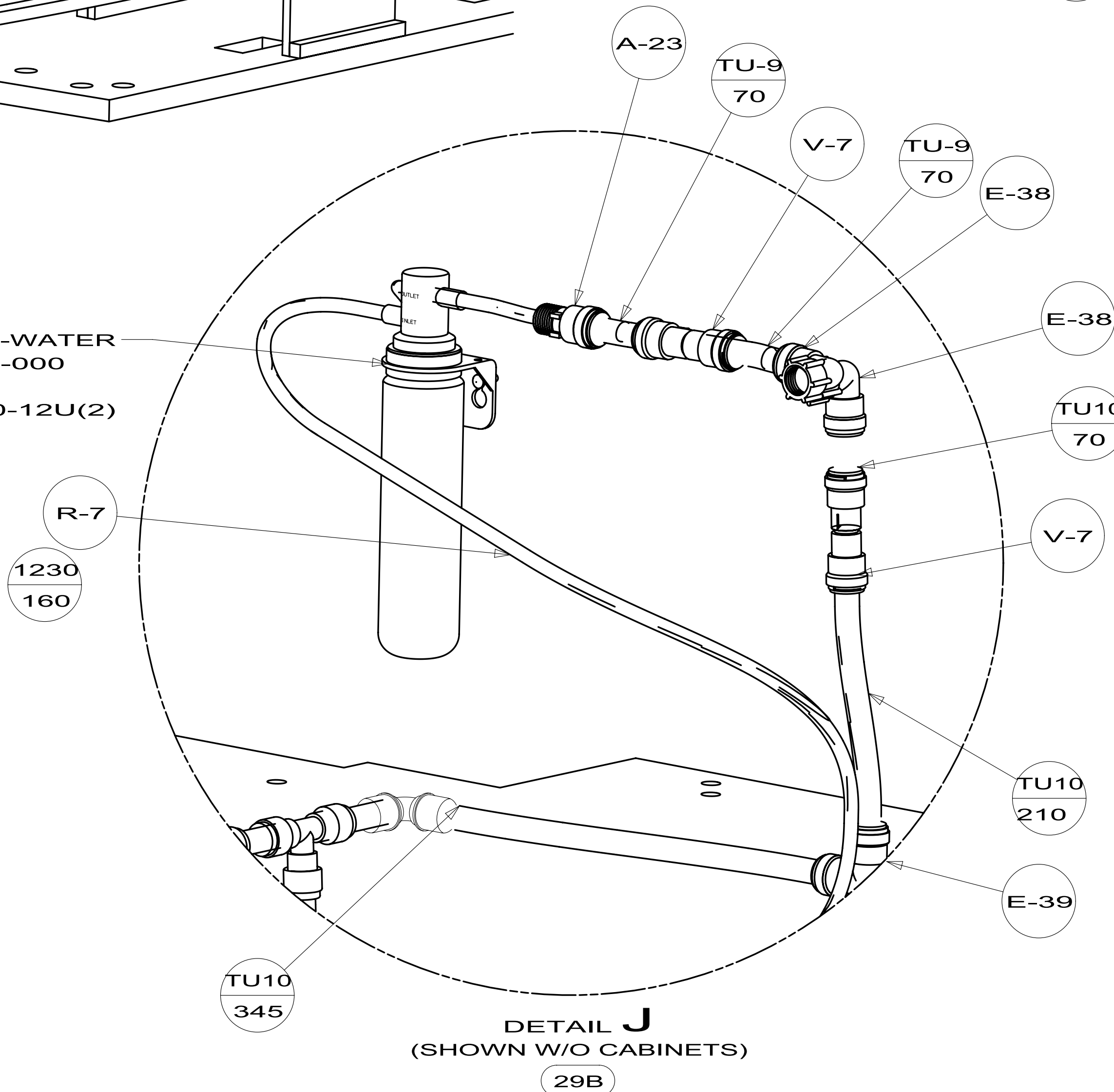




VIEW F

FILTER KIT-WATER  
160946-03-000

SCREW  
000G67-10-12U(2)



FIRST USED	12 524G	
TITLE:	DO NOT SCALE DRAWING	
TITLE:	WATER SYSTEM INSTL	
SHEET 4	PART NO	177853
	REV	