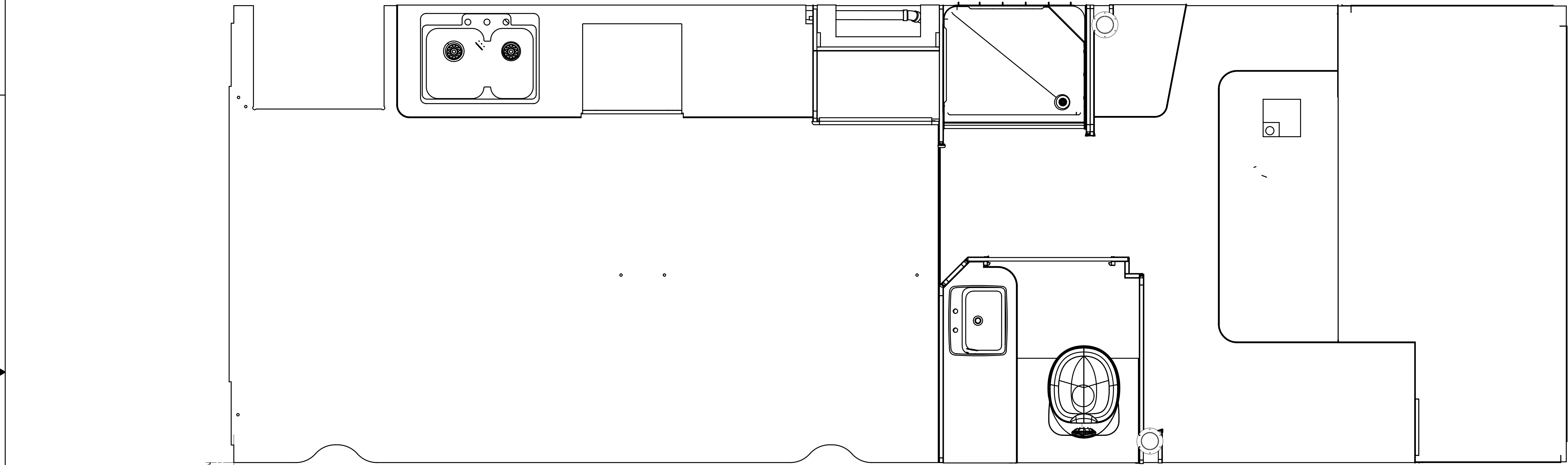


DWG NO	DETAIL	---
174177-01	G	231C
174177-02	H	231CP

RELEASE	REV DATE	DWG NO	174177
REV ZONE	REVISION RECORD	DATE	DTR-ORIG



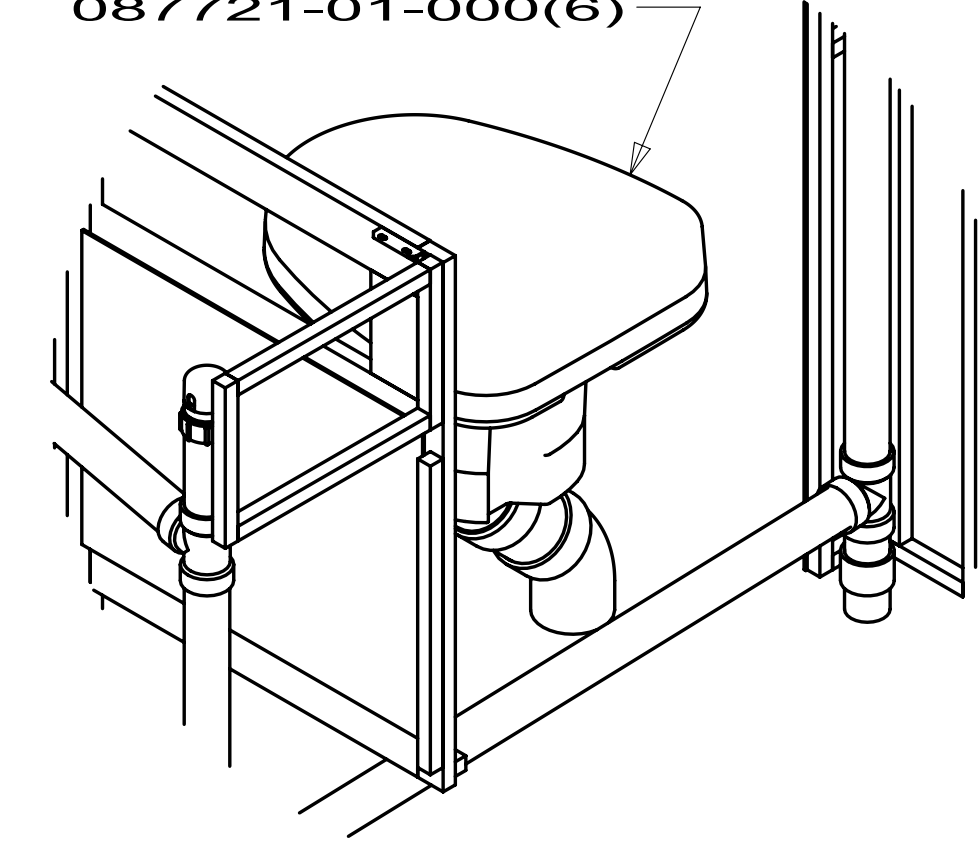
- 43E TOILET-PORCELAIN-ROUND
- 644 GREAT ALASKAN RENTAL PACKAGE
- 464 TOILET
- 265 CODES/STANDARDS-CSA/CMVSS
- 23T DRAINAGE SYSTEM-HEATED
- 1B1 CODES/STANDARDS USA
- 086 INTERIOR UPGRADE PACKAGE

- 10 USE SMOOTH PLUMBERS PUTTY 167459-01-000 TO SEAL STRAINER (0.2 PER STRAINER).
- 9. PREP THE SURFACES PER MANUFACTURES INSTRUCTIONS BEFORE APPLYING THE HEATING PAD.
- 8. SECURE DRAINAGE PIPES TO CABINET USING WIRE TIE 108046-02-000, AND SCREW 000G67-10-12B AT INTERVALS OF NOT OF NOT MORE THAN 4 FEET APART.
- 7 SECURE VENT PIPE TO FLOOR WITH CLAMP 062401-02-000 (2),SCREW 000G67-10-12B (2), BRACKET 136878-01-CHT (2).
- 6 VENT PIPE MUST PROJECT 51 MIN AND 64 MAX ABOVE ROOF FOR PROPER FIT AND FUNCTION.
- 5. SEAL AROUND SHOWER WITH SILICONE.
- 4 GLUE FITTING AFTER CABINET IS INSTALLED.
- 3. ALL PIPE AND FITTINGS TO BE ASSEMBLED WITH SOLVENT 004020-01-000 (USA), 004020-02-000 (CAN)
- 2. SLOPE OF TRAP ARM MUST BE 6 PER 305 mm.
- 1. SLOPE OF HORIZONTAL PIPING TO BE MINIMUM OF 3 PER 305 mm.

		COPYRIGHT 2011 WINNEBAGO INDUSTRIES, INC.
DTR	ORIG. DATE	ALL DIMENSIONS ARE IN MILLIMETERS
CHKR		
P.E.		
M.E.	FIRST USED	
DSNR		11 231C/CP
UNSPECIFIED TOLERANCES ARE: WHOLE DIM (X) : 3 ONE-PLACE (X.X) : 1.5 TWO-PLACE (X.XX) : 0.50 ANGLE : 1°		MATERIAL:
THIRD ANGLE PROJECTION		
DO NOT SCALE DRAWING		REFER TO ES0018 FOR FASTENER TIGHTENING GUIDELINES
TITLE: DRAINAGE SYSTEM INSTL		
SHEET 1 OF 5	PART NO	174177
REF:		1

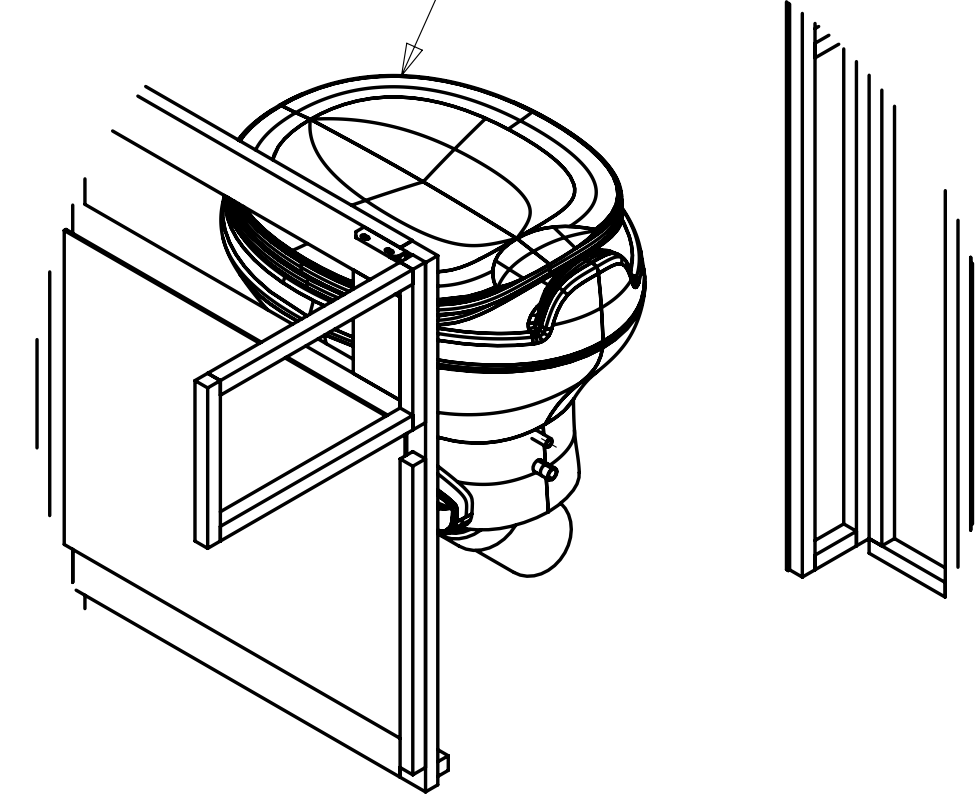
FOR DRAINAGE CALLOUTS SEE DWG NO 116229-01-000

TOILET
147421-05-CHT
160815-02-CHT
SCREW
087721-01-000(6)



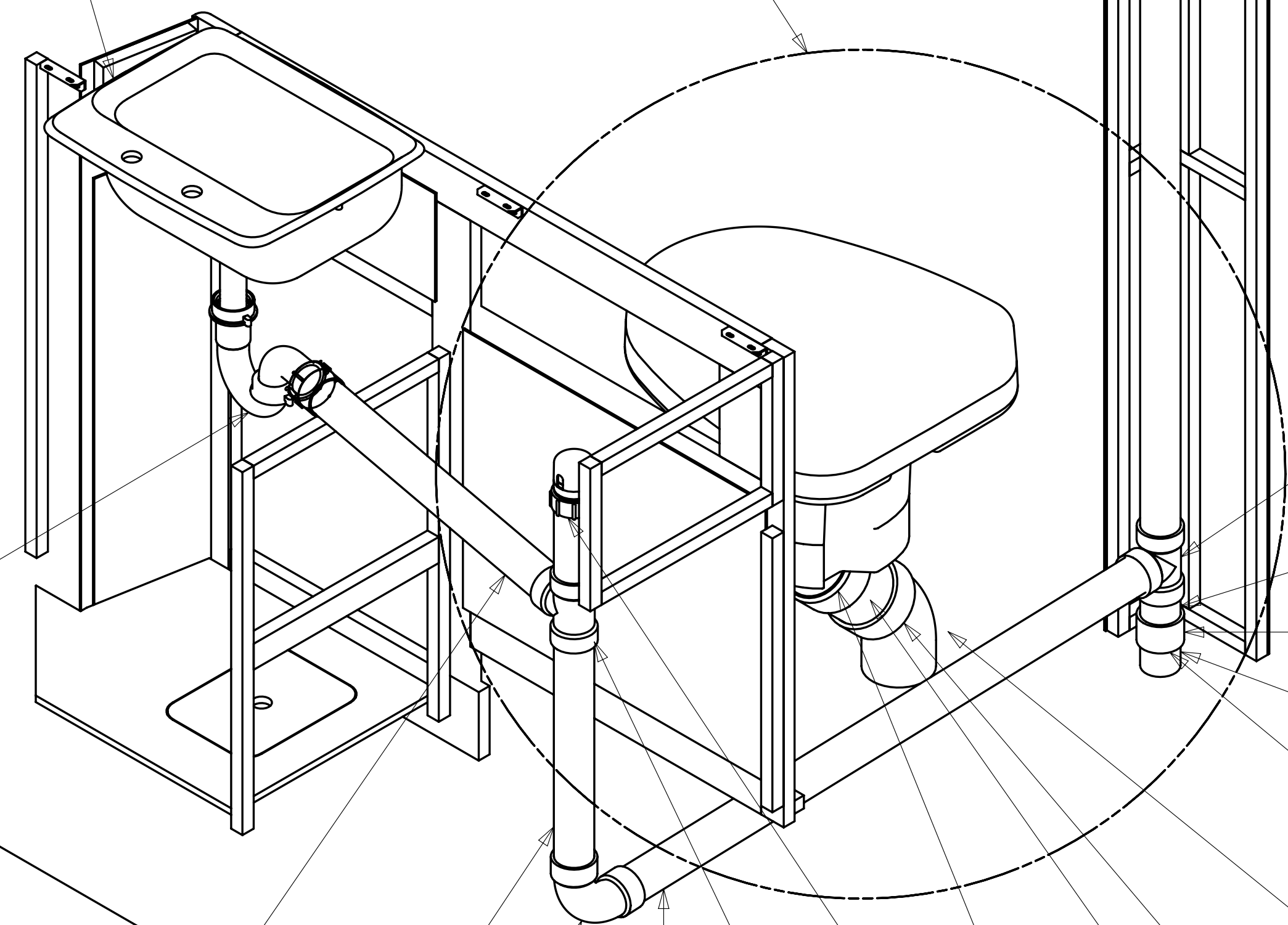
DETAIL G

TOILET
160815-04-CHT
SCREW
087721-01-000(6)



DETAIL H

SINK
096927-01-CHT
SEAL
091255-02-000 (A/R)



VIEW A

DETAIL G OR H
(SEE TAB)

- 1B1 P-1
- 265 P-3
- 1B1 A-15

- 1 600
- 1 500
- 265 1B1

- 1 360

- E-6

- 1 915

- T-1

- VM-1

- 2 145

FLANGE-CLOSET
151541-01-000

- T-1

- 1 65

- C-3

- G-1 7

- 1 55

- G-2

- CP-2 6

- 1 1940

- 1 65

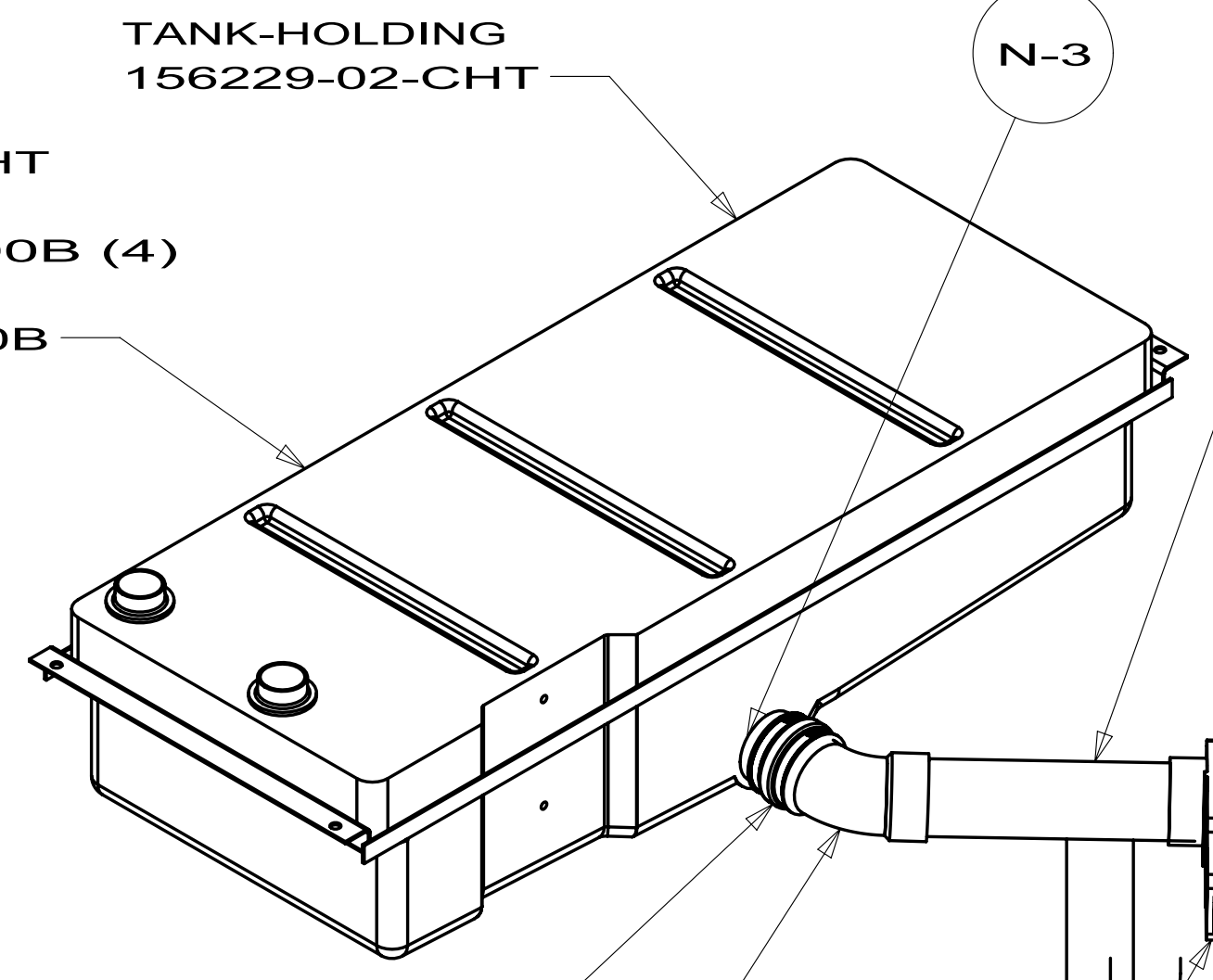
- C-3

- G-1 7

- 1 55

- G-2

CRADLE ASM
156612-02-CHT
WASHER
000E13-16-00B (4)
NUT
000D39-05-00B



TANK-HOLDING
156229-02-CHT

- N-3

- 2 340

- 2 75

- E-9

HANGER-STRAP
140220-19-CHT
BOLT
000C18-05-40A
NUT
000D39-05-00B
HOLDER-RING
141443-05-CHT
BOLT
000C26-05-16B
NUT
000D39-05-00B

4 23T PAD-HEATER, ELBOW
133972-05-000

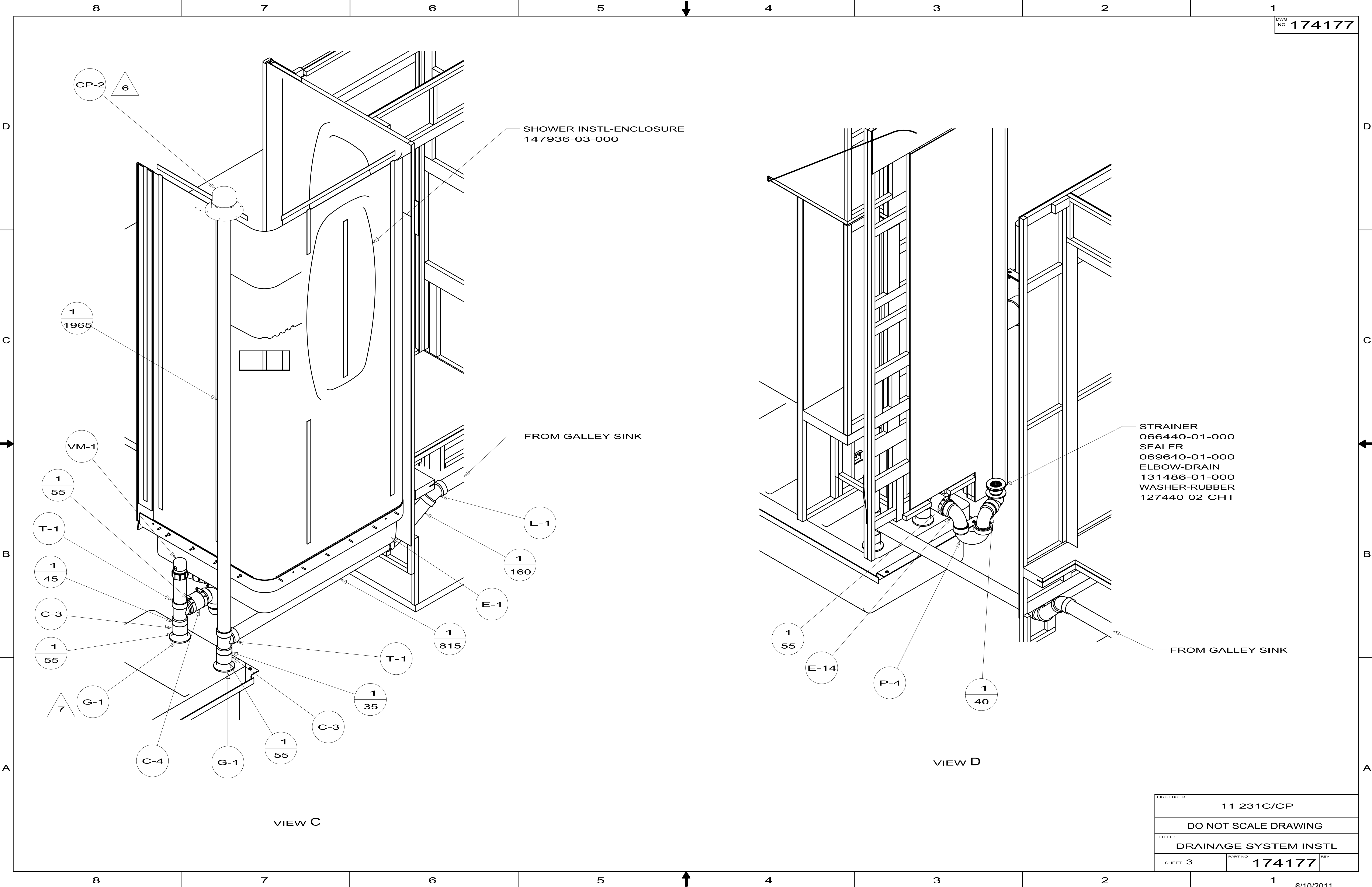
VALVE
129147-01-000

CRADLE ASM
156612-03-CHT
WASHER
000E13-16-00B (4)
NUT
000D39-05-00B

TANK-HOLDING
156228-02-CHT

VIEW B

FIRST USED		11 231C/CP	
DO NOT SCALE DRAWING			
TITLE: DRAINAGE SYSTEM INSTL			
SHEET 2	PART NO	174177	REV



SHOWER INSTL-ENCLOSURE
147936-03-000

FROM GALLEY SINK

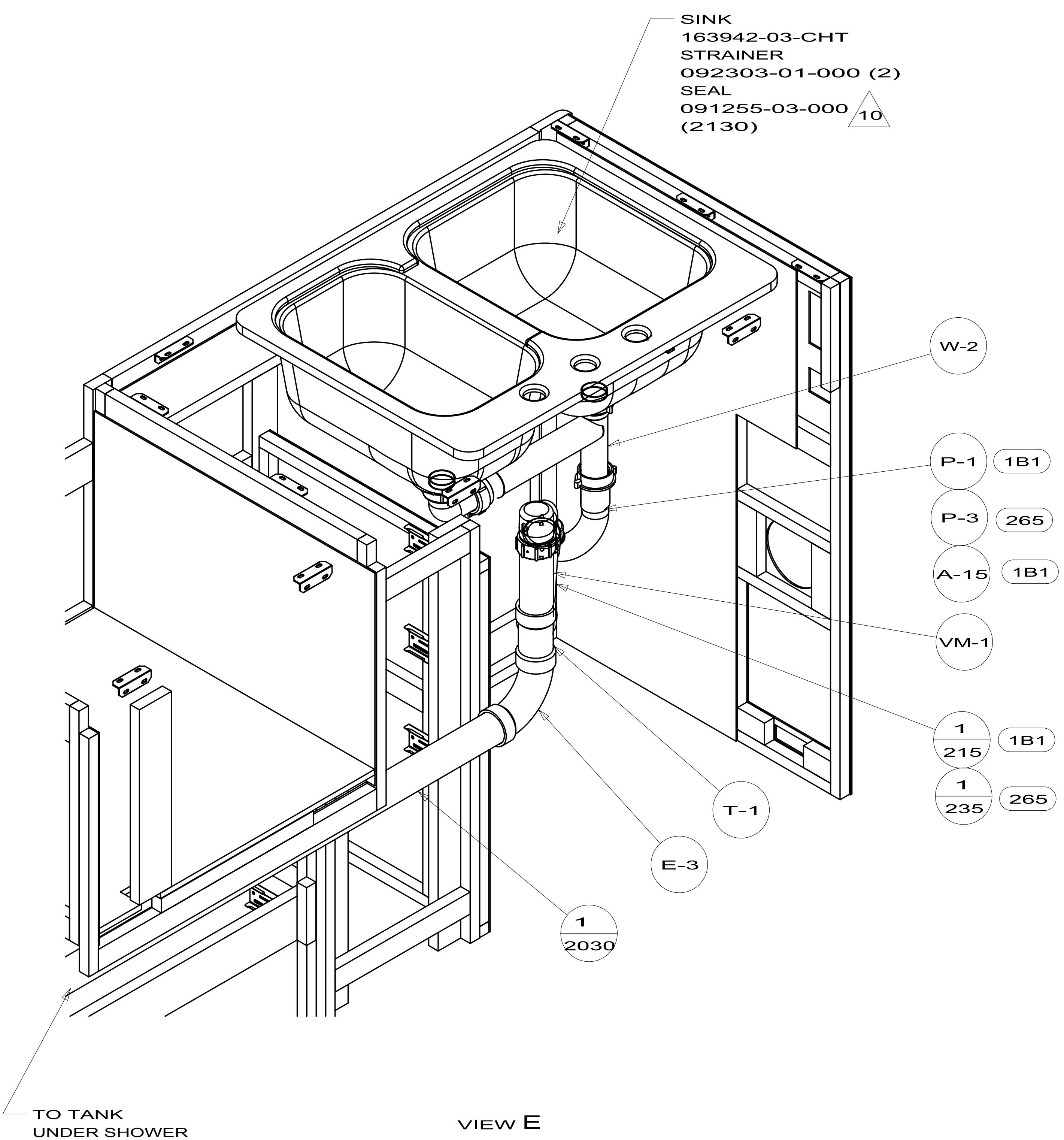
STRAINER
066440-01-000
SEALER
069640-01-000
ELBOW-DRAIN
131486-01-000
WASHER-RUBBER
127440-02-CHT

FROM GALLEY SINK

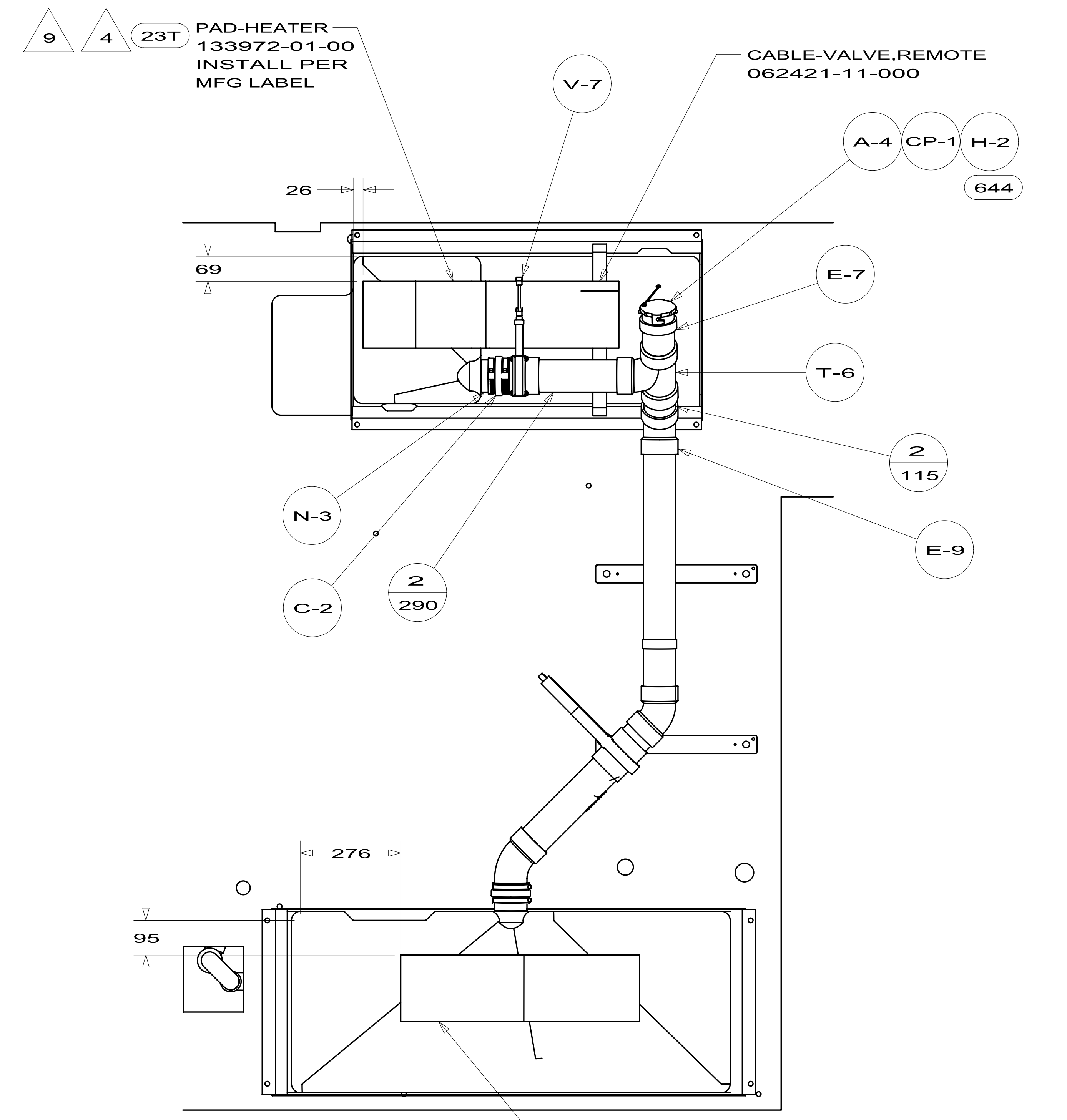
VIEW C

VIEW D

FIRST USED		11 231C/CP	
DO NOT SCALE DRAWING			
TITLE: DRAINAGE SYSTEM INSTL			
SHEET 3	PART NO	174177	REV

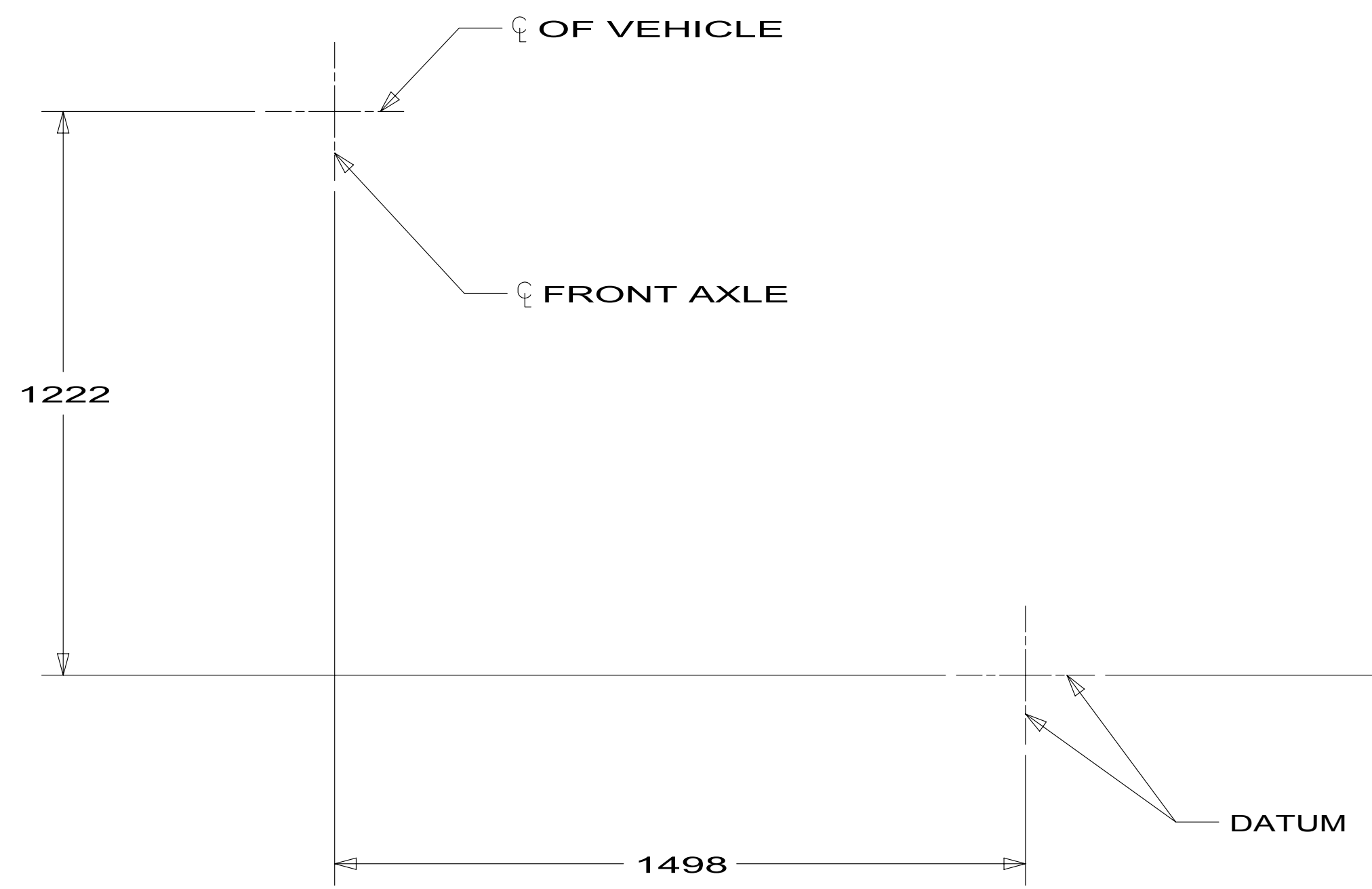
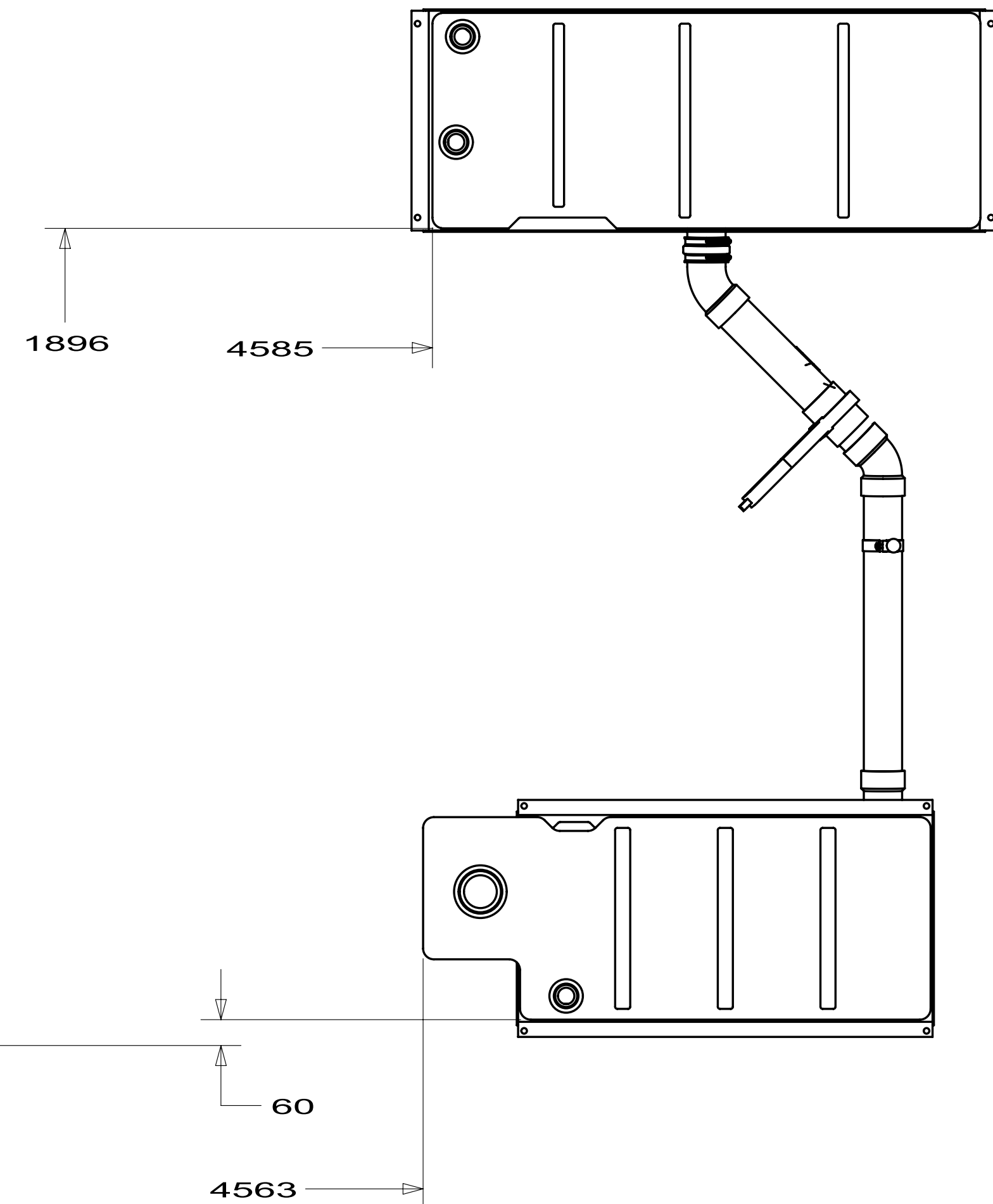


VIEW E



VIEW F

FIRST USED	11 231C/CP	
TITLE:	DO NOT SCALE DRAWING	
TITLE:	DRAINAGE SYSTEM INSTL	
SHEET 4	PART NO 174177	REV

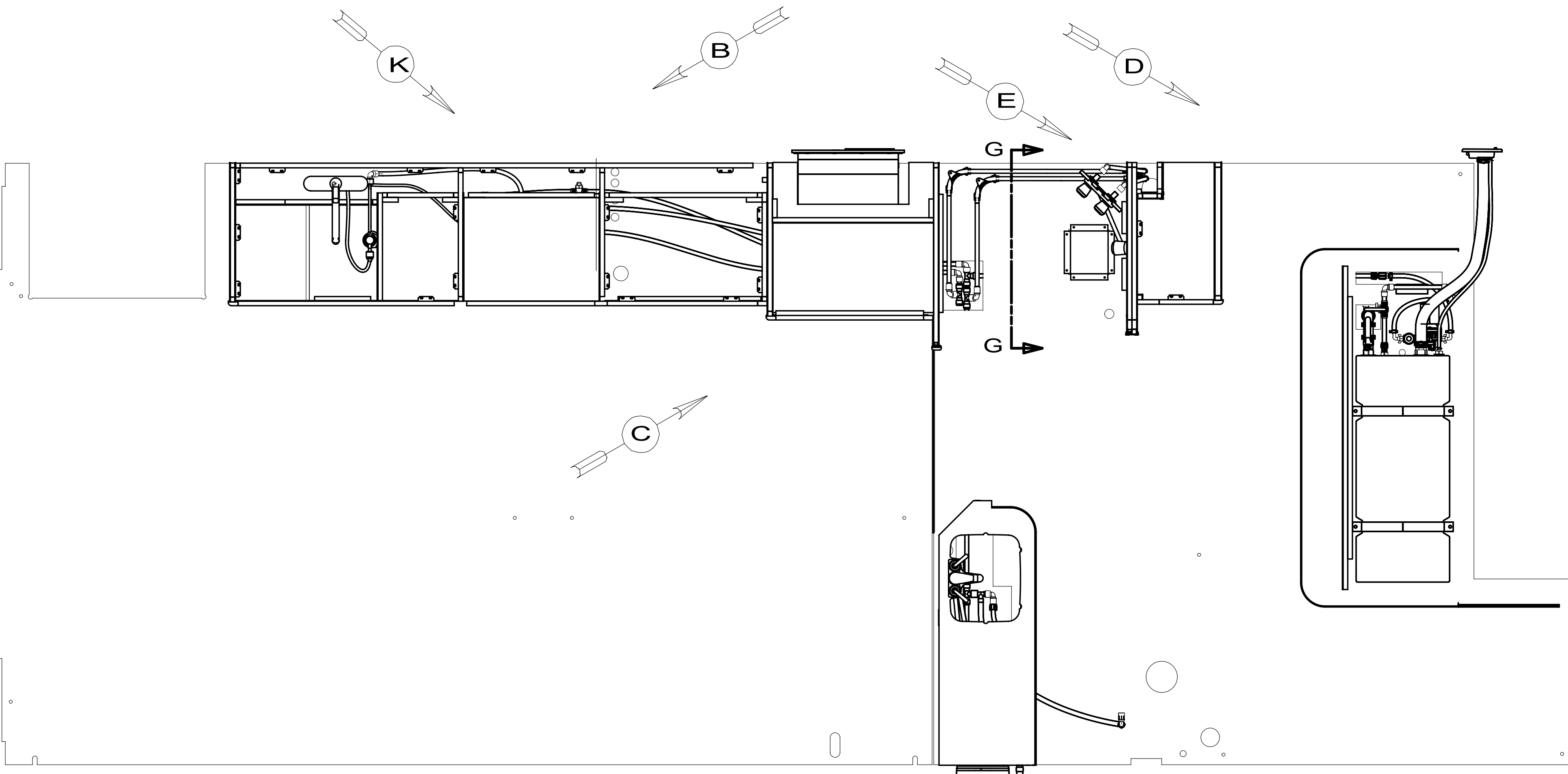


TOP VIEW SHOWING TANK LOCATION

FIRST USED		
11 231C/CP		
DO NOT SCALE DRAWING		
TITLE:		
DRAINAGE SYSTEM INSTL		
SHEET 5	PART NO	REV
	174177	

DWG NO	VIEW	MODEL
178003-01	A,B	231C
178003-02	K,L	231CP

RELEASE	REV DATE	DWG NO	178003
REV ZONE	REVISION RECORD	DATE	DTR-ORIG



12. INSTALL BYPASS PLUG FOR SYSTEM TESTING AND SHIPPING.

11. ATTACH WASHER-PLASTIC 087080-13-CHT W/TAPE-DOUBLE 123816-03 ON BOTTOM SIDE OF FLOOR.

10. ATTACH WASHER-PLASTIC 087080-11-CHT W/TAPE-DOUBLE 123816-03 ON BOTTOM SIDE OF COMPARTMENT.

9. LABEL THE HOT AND COLD SUPPLY RISER TUBES AND TAPE FITTING TO TUBE BEFORE CABINET SET TO PREVENT MOVEMENT.

8. NOT REQUIRED W644 FEATURE.

7. ADD PIPE WRAP (LADDER SCRAP 110157-02-000) INSULATION.

6. ADD TEFLON TAPE 010405-03-000.

5. ADD TEFLON TAPE 010405-02-000.

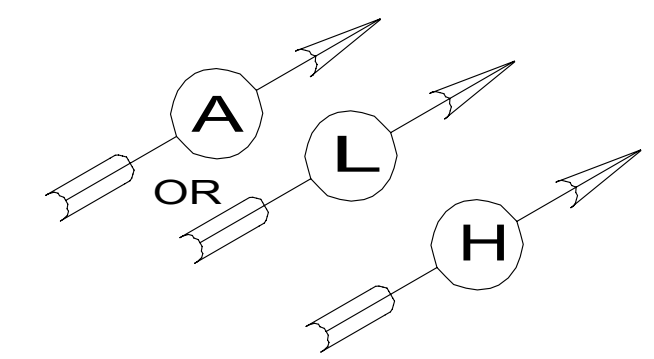
4. ADD TEFLON TAPE 010405-01-000.

3. ALL TUBING TO BE SECURED AT 1200 INTERVALS MAXIMUM WITH CLAMP 010495-01-000 AND SCREW 000G67-10-12B OR EQUIVALENT.

2. TUBING TO BE INSTALLED WITH SUFFICIENT SLOPE TO PROVIDE DRAINAGE TO NEAREST VALVE OR TANK.

1. PLASTIC FITTINGS TO BE SEALED WITH SEALANT 084456-01-000.

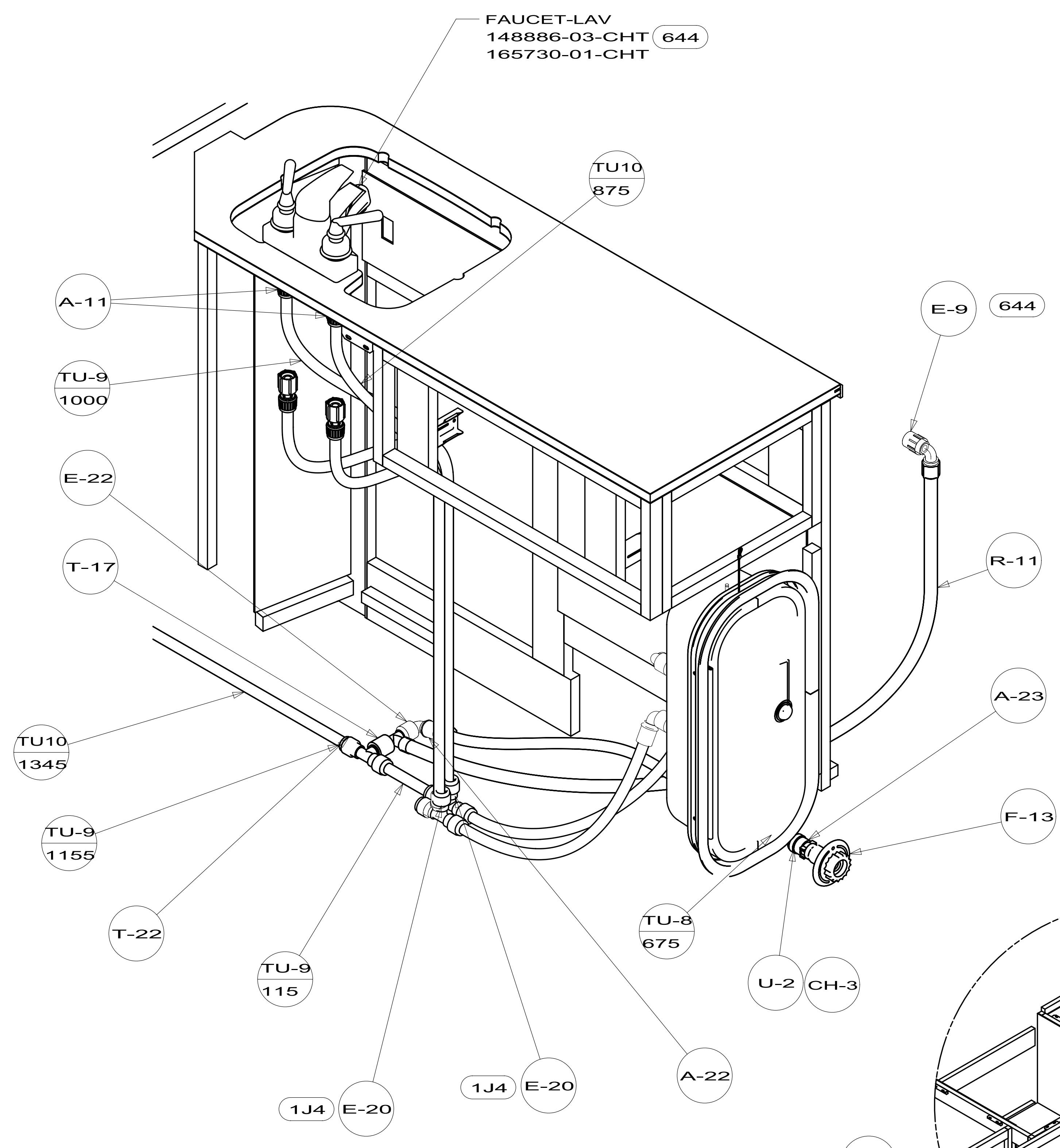
NOTES:



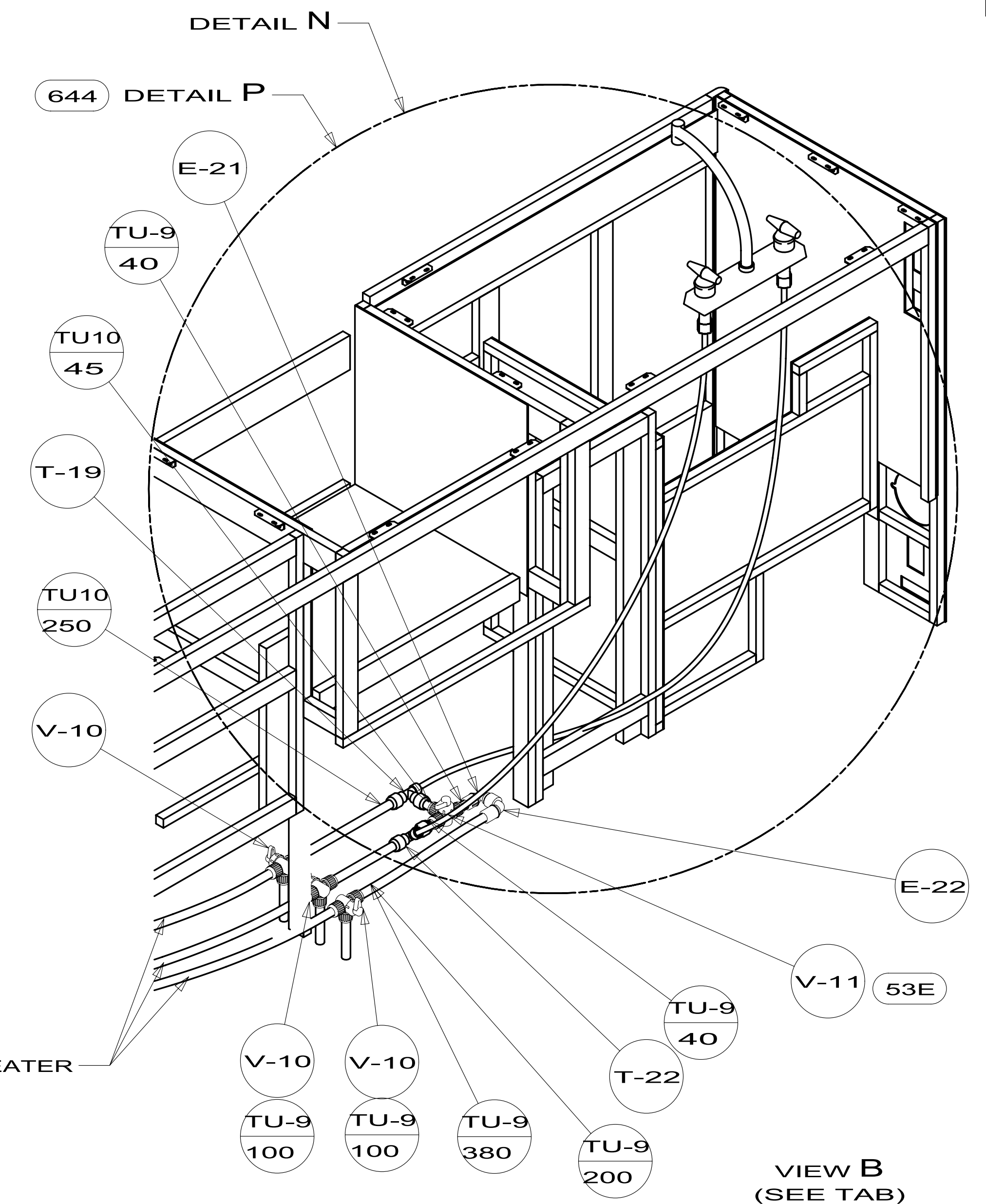
- 64R EXTERIOR WASH STATION
- 53Z WTR HTR-6GAL/110/LP/MTR/AUTO
- 1J4 EXT WASH STATION - WITHOUT
- 53F WATER HEATER-ELEC. IGNITION
- 53E WATER SYS WINTERIZATION PKG
- 644 GREAT ALASKAN RENTAL PACKAGE

		COPYRIGHT 2011 WINNEBAGO INDUSTRIES, INC.	
DTR	ORIG. DATE	ALL DIMENSIONS ARE IN MILLIMETERS	
CHKR			
P.E.			
M.E.	FIRST USED		
DSNR		12 231C	
UNSPECIFIED TOLERANCES ARE:		MATERIAL:	
WHOLE DIM (X)	: 3		
ONE-PLACE (X.X)	: 1.5		
TWO-PLACE (X.XX)	: 0.50		
ANGLE	: 1°		
THIRD ANGLE PROJECTION			
DO NOT SCALE DRAWING		REFER TO ES0018 FOR FASTENER TIGHTENING GUIDELINES	
TITLE: WATER SYSTEM INSTL			
SHEET 1 OF 6	PART NO	178003	REV
REF:	1		

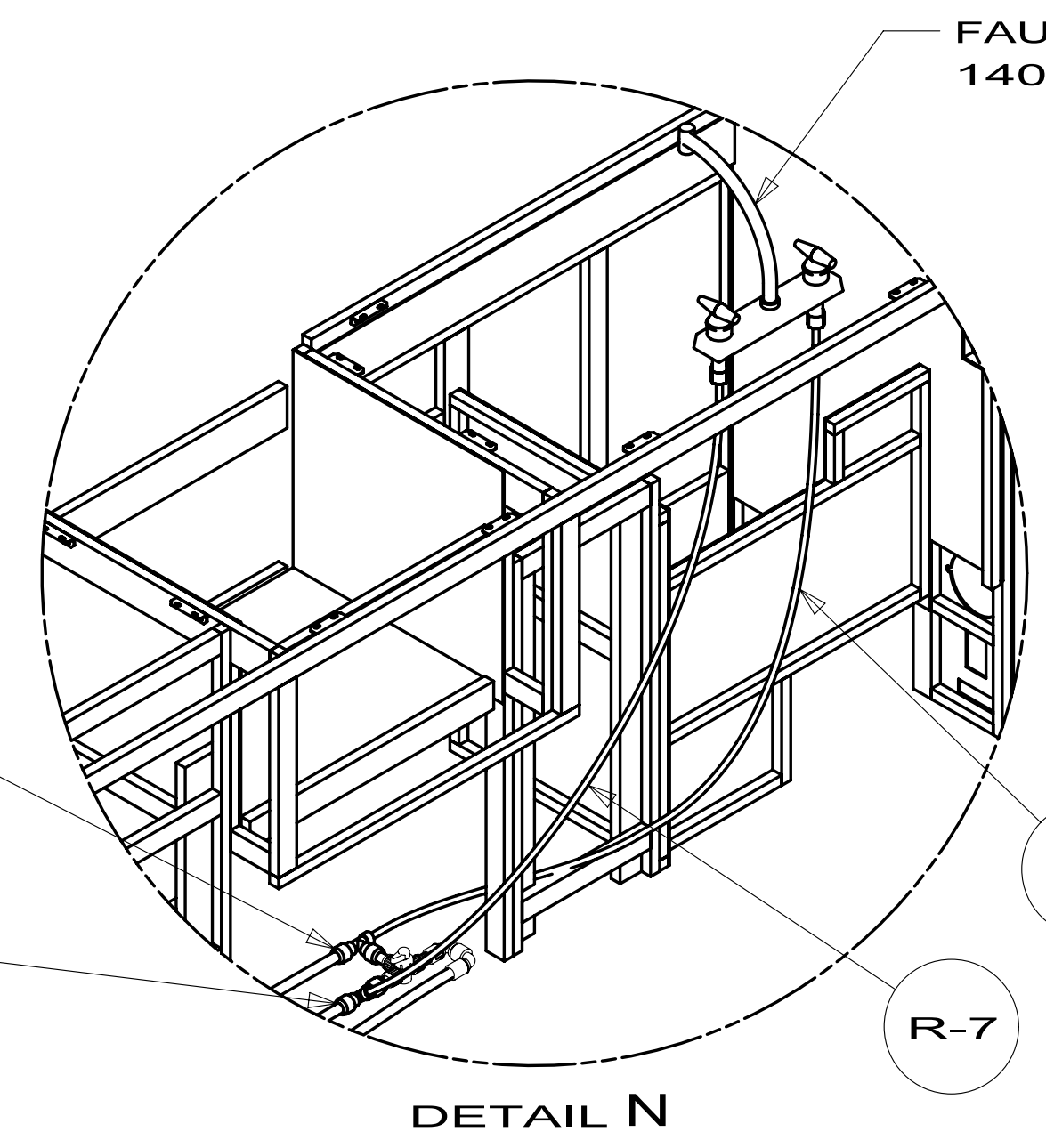
FOR WATER CALLOUTS SEE DWG NO 116230-01-000



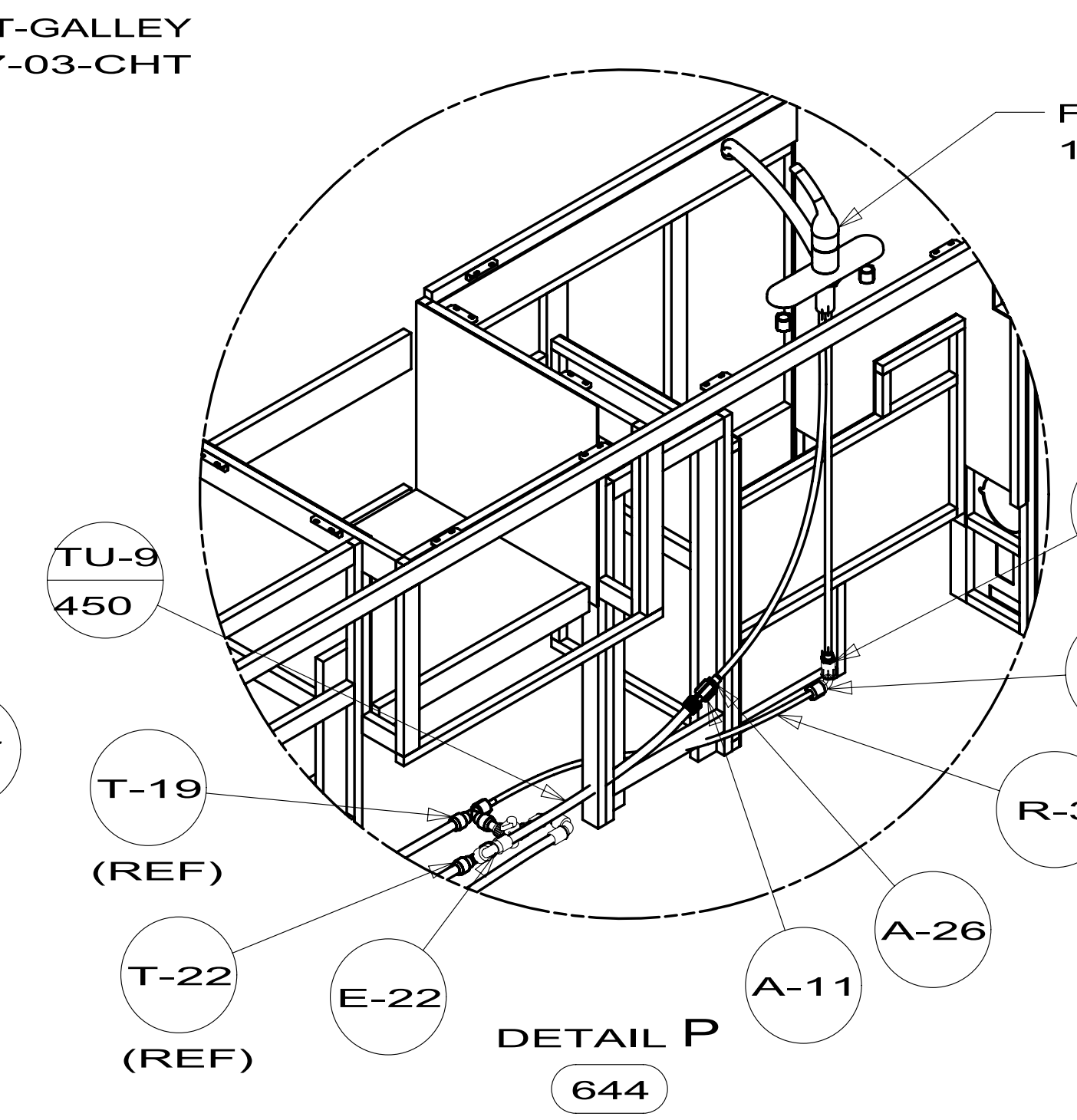
VIEW A
(SEE TAB)



VIEW B
(SEE TAB)



DETAIL N



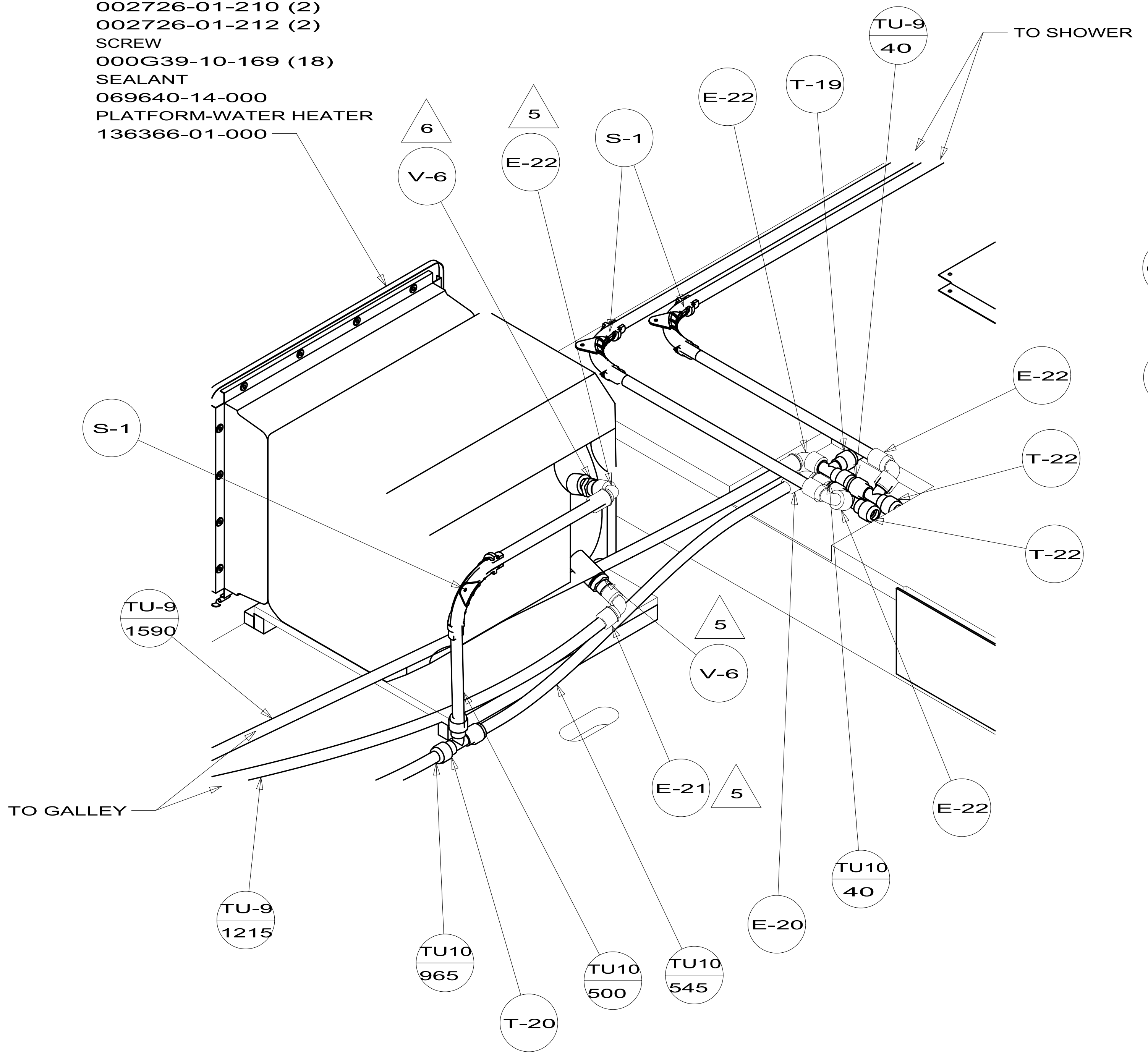
DETAIL P
644

FIRST USED	12 231C	
TITLE:	DO NOT SCALE DRAWING	
SHEET 2	PART NO	178003
	REV	1

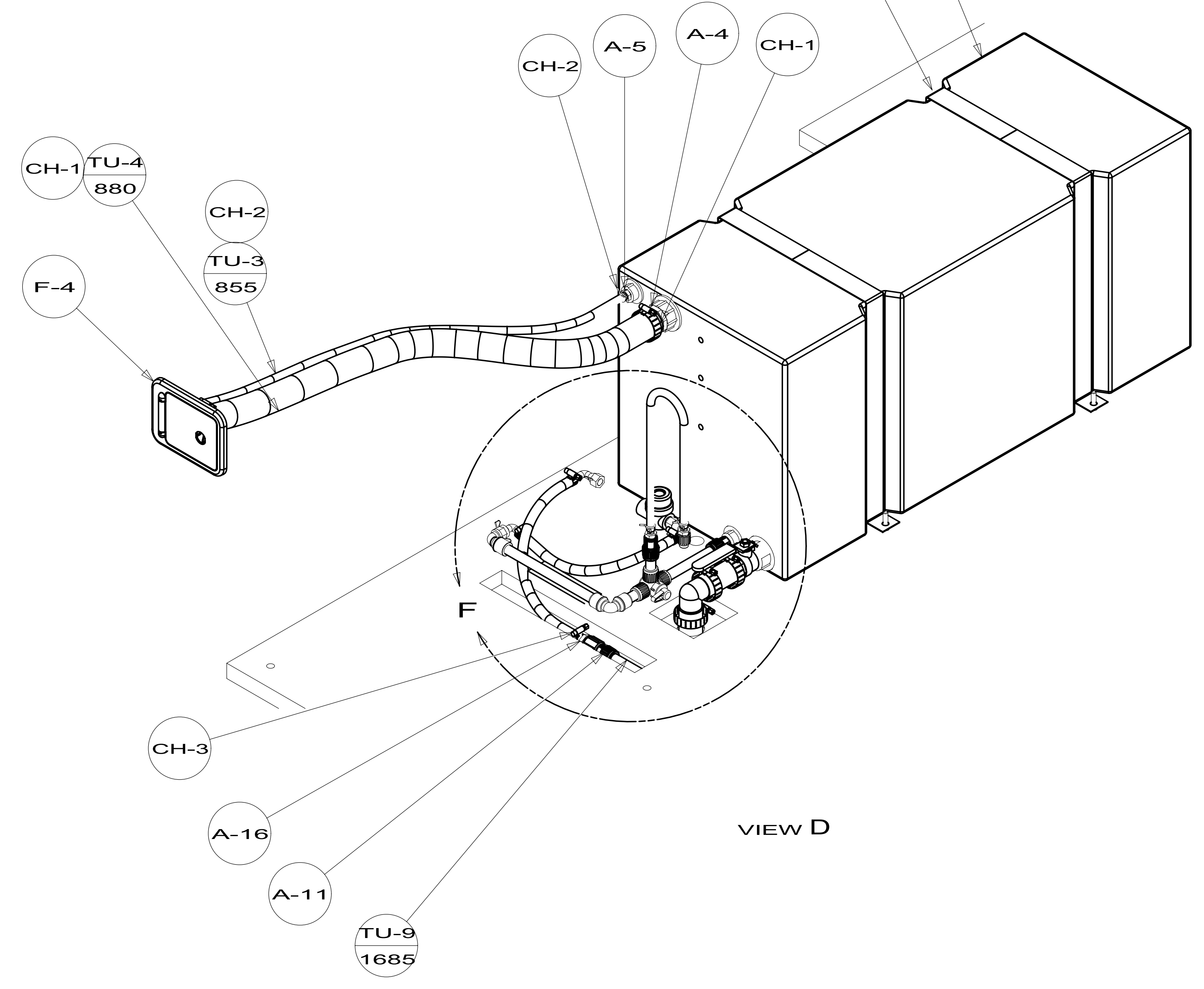
- WATER-HEATER
051391-03-000 53F
- 53Z 145541-02-000
- DOOR
125420-06-CHT
- AL EXTR
002726-01-210 (2)
- 002726-01-212 (2)
- SCREW
000G39-10-169 (18)
- SEALANT
069640-14-000
- PLATFORM-WATER HEATER
136366-01-000

TANK-WATER,36 GAL
156167-03-000

STRAP-TANK,WATER
118994-10-000 (2)

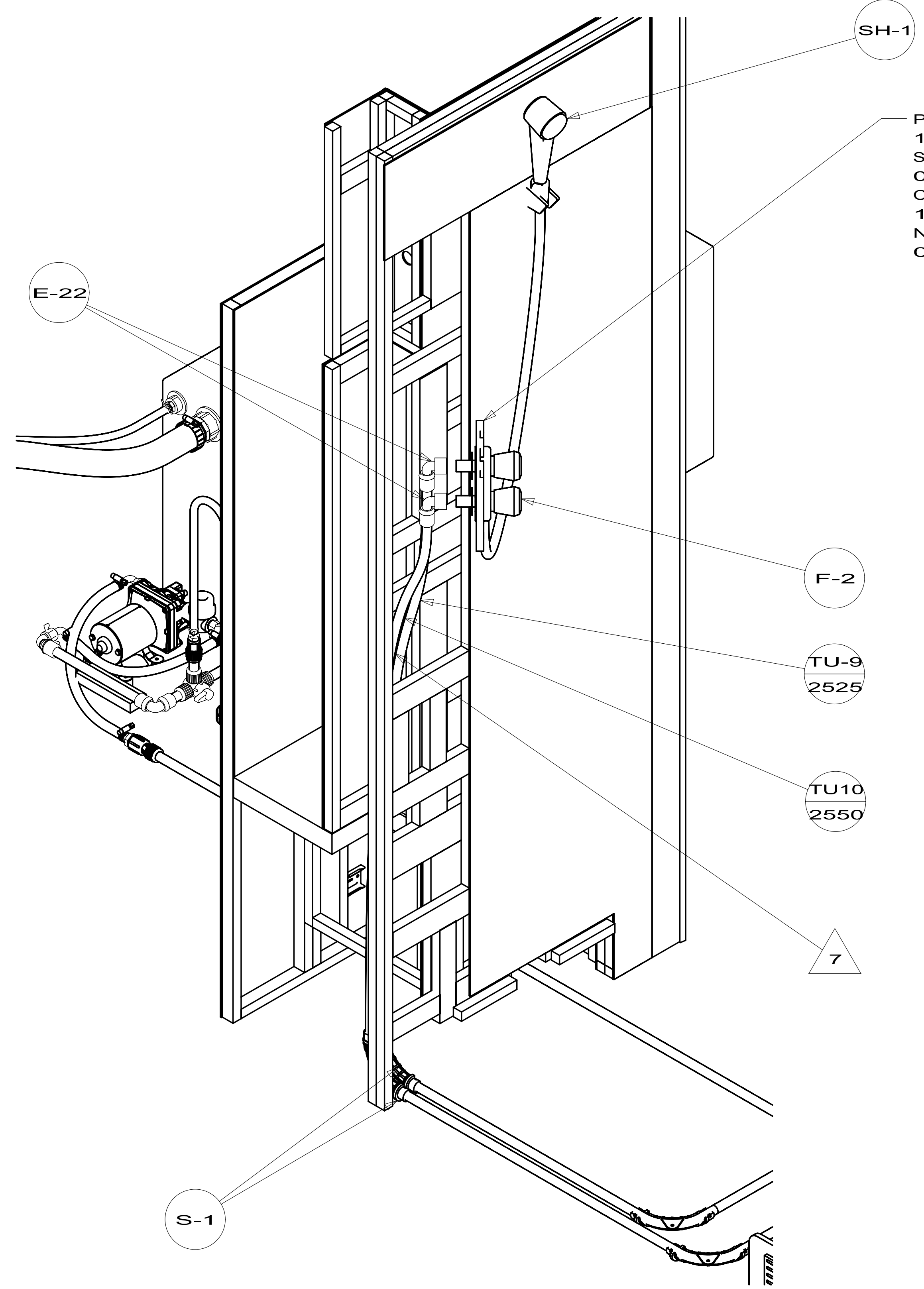


VIEW C



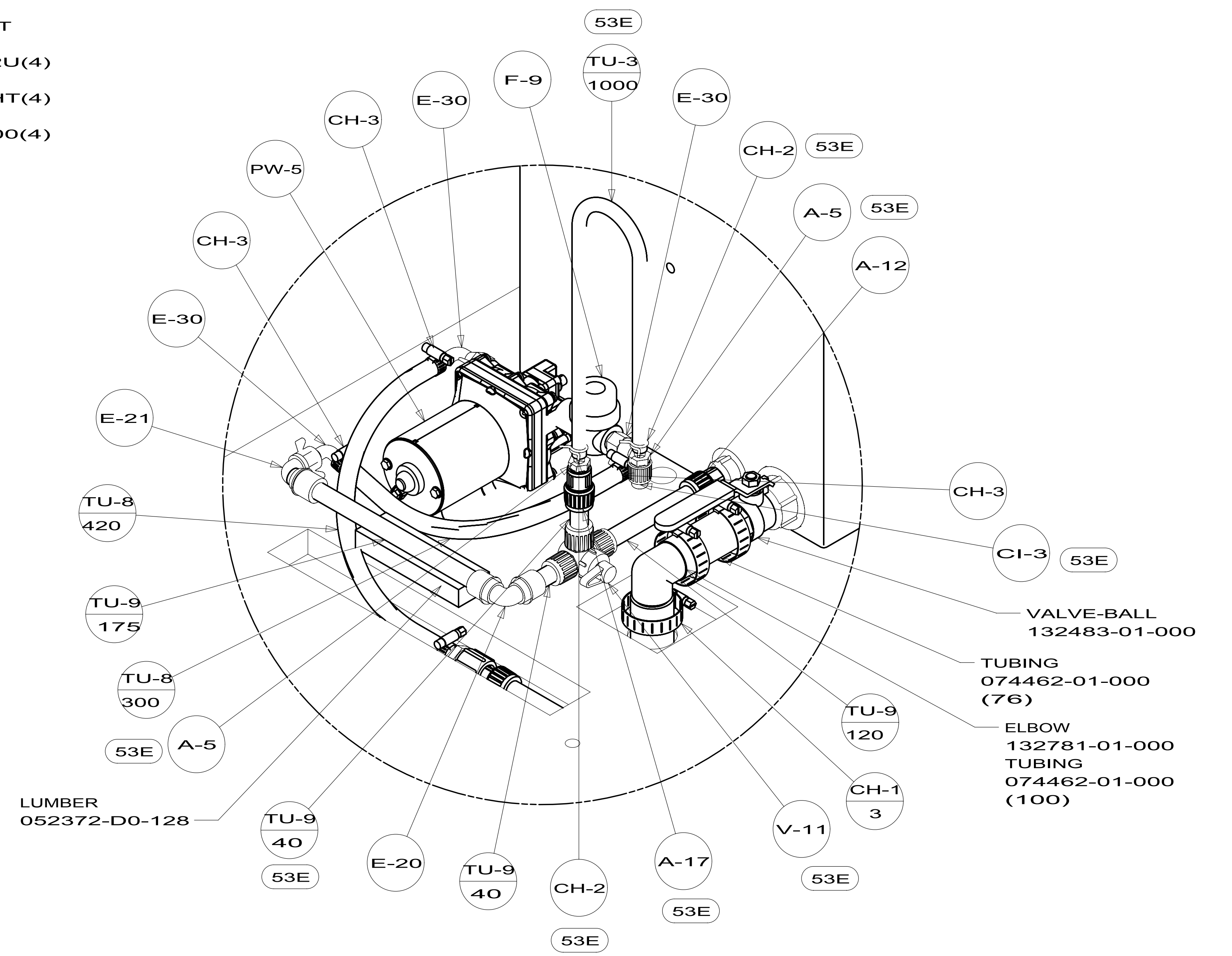
VIEW D

FIRST USED	12 231C	
DO NOT SCALE DRAWING		
TITLE: WATER SYSTEM INSTL		
SHEET 3	PART NO 178003	REV



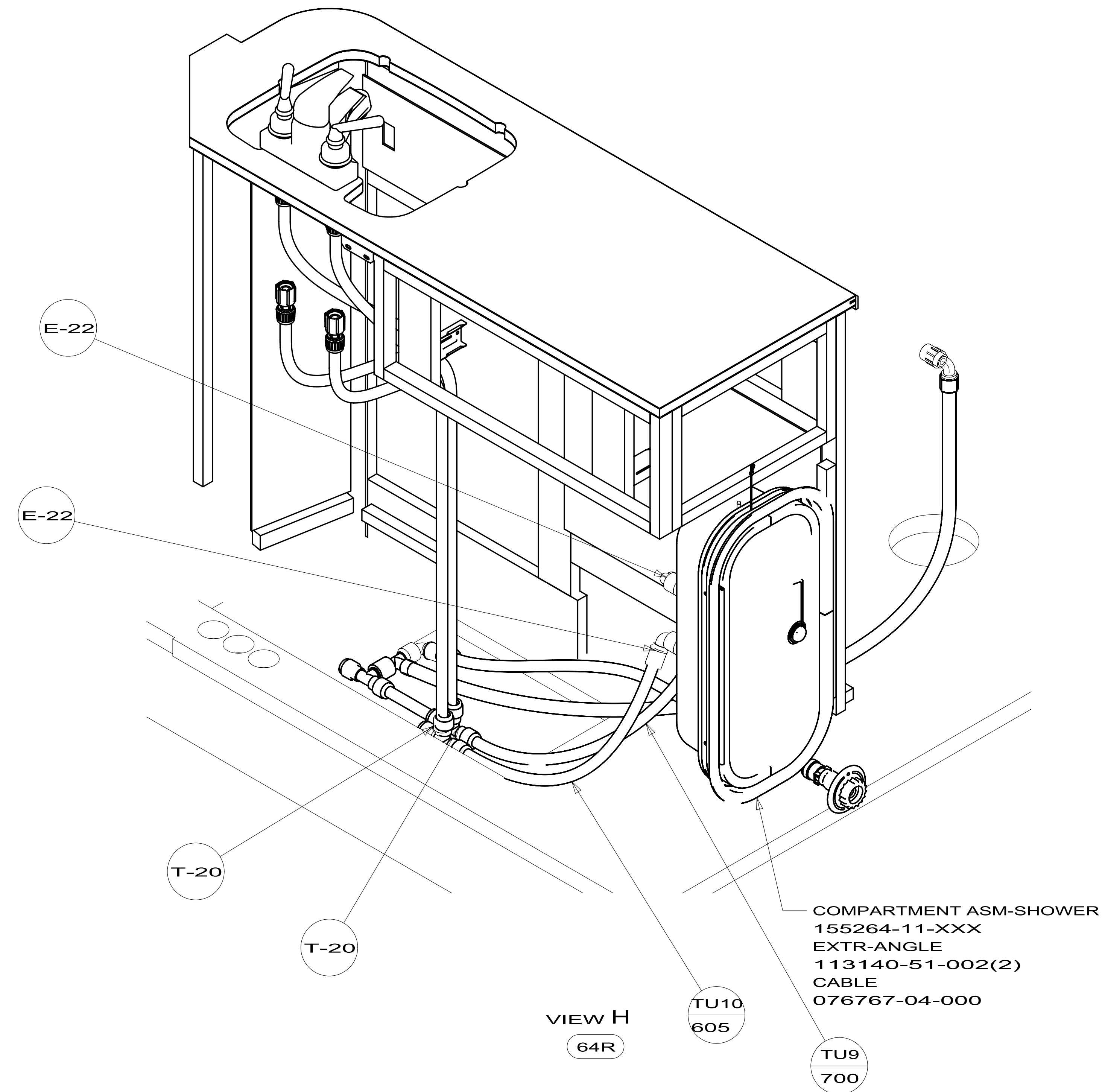
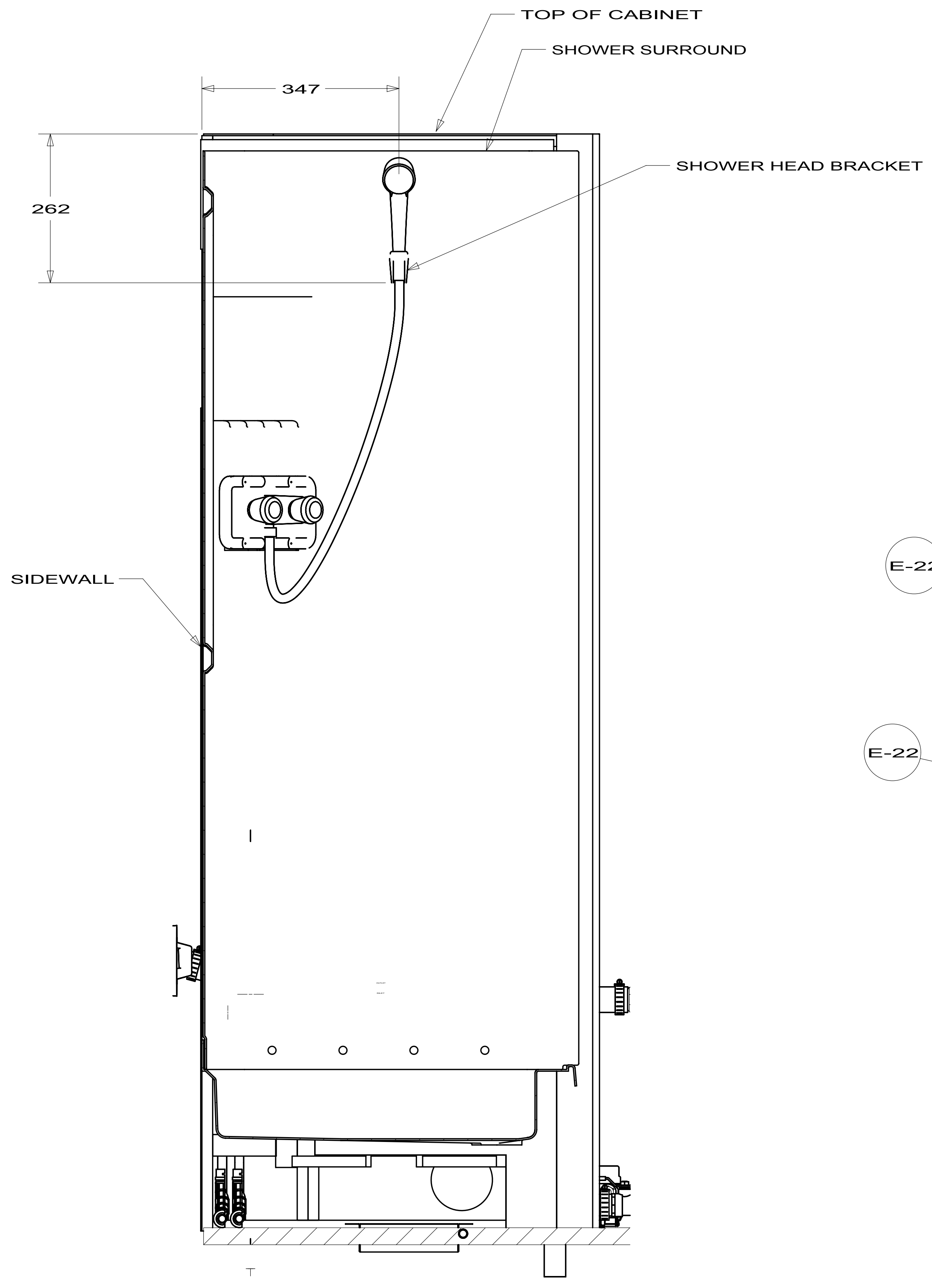
VIEW E

- PANEL-SHOWER 167738-02-CHT
- SCREW 000G11-08-12U(4)
- COVER 166569-01-CHT(4)
- NUT-SPEED 040921-05-000(4)



DETAIL F

FIRST USED	12 231C	
TITLE:	DO NOT SCALE DRAWING	
	WATER SYSTEM INSTL	
SHEET 4	PART NO 178003	REV

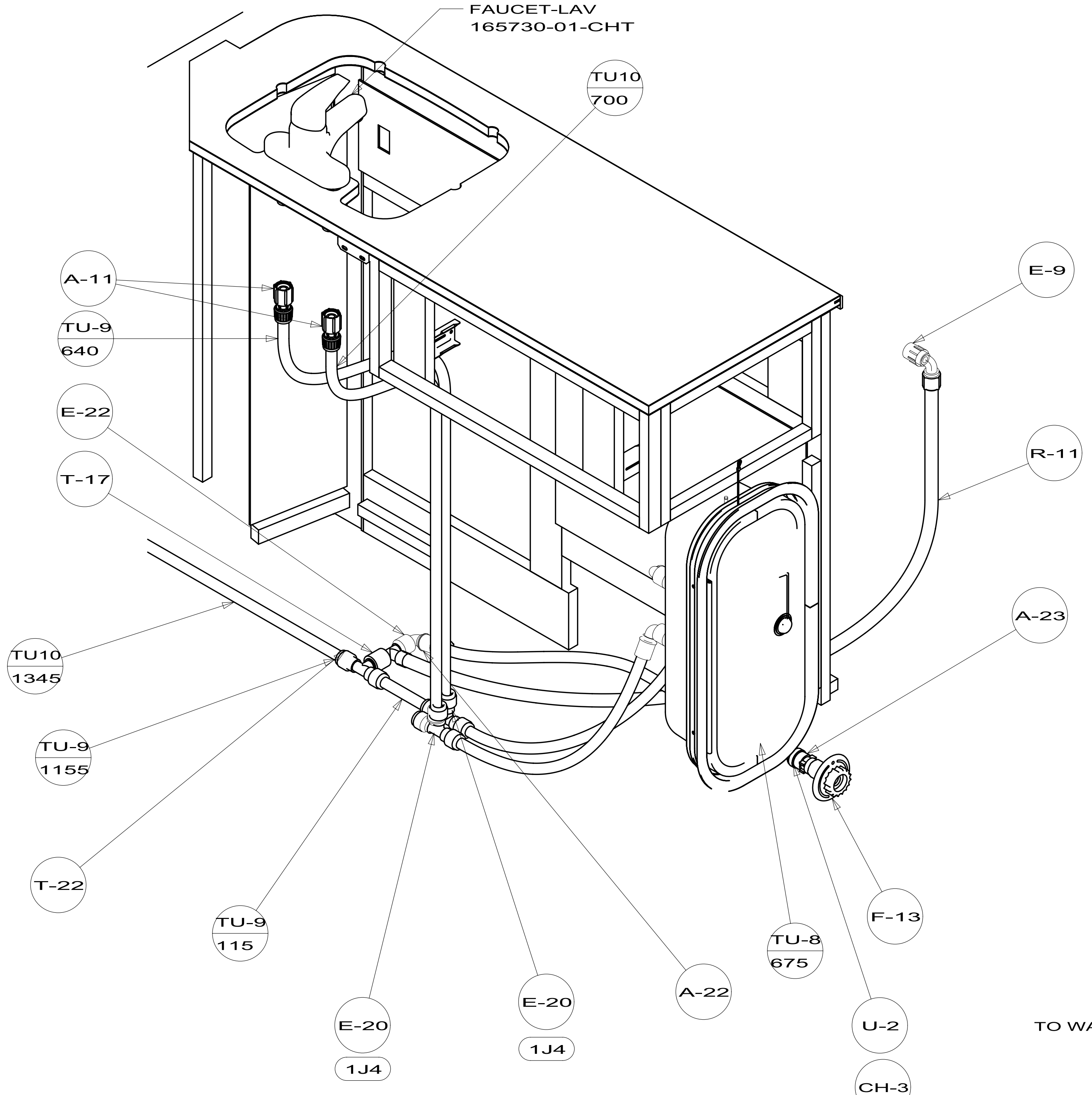


FIRST USED	12 231C	
DO NOT SCALE DRAWING		
TITLE: WATER SYSTEM INSTL		
SHEET 5	PART NO 178003	REV

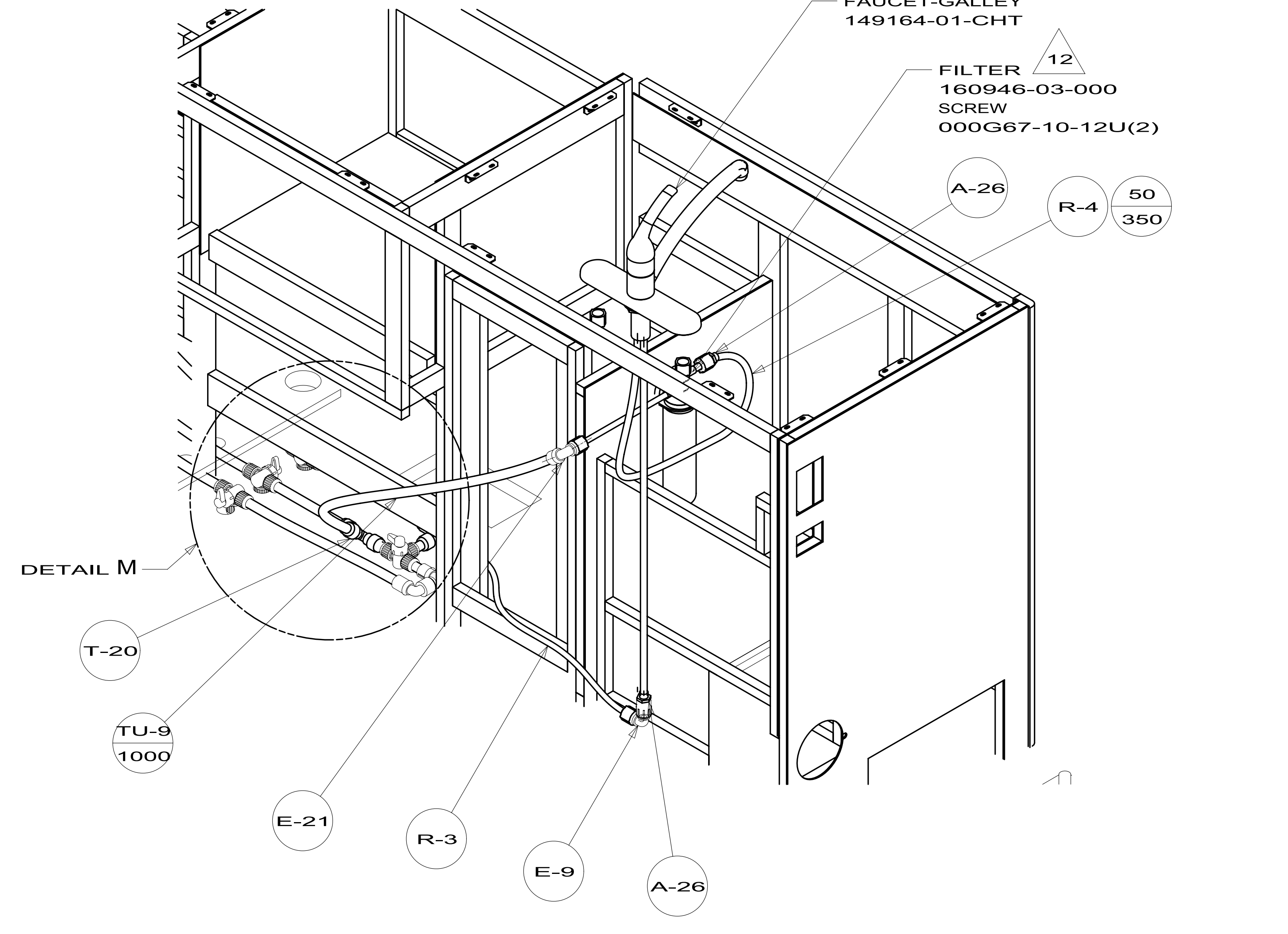
FAUCET-LAV
165730-01-CHT

FAUCET-GALLEY
149164-01-CHT

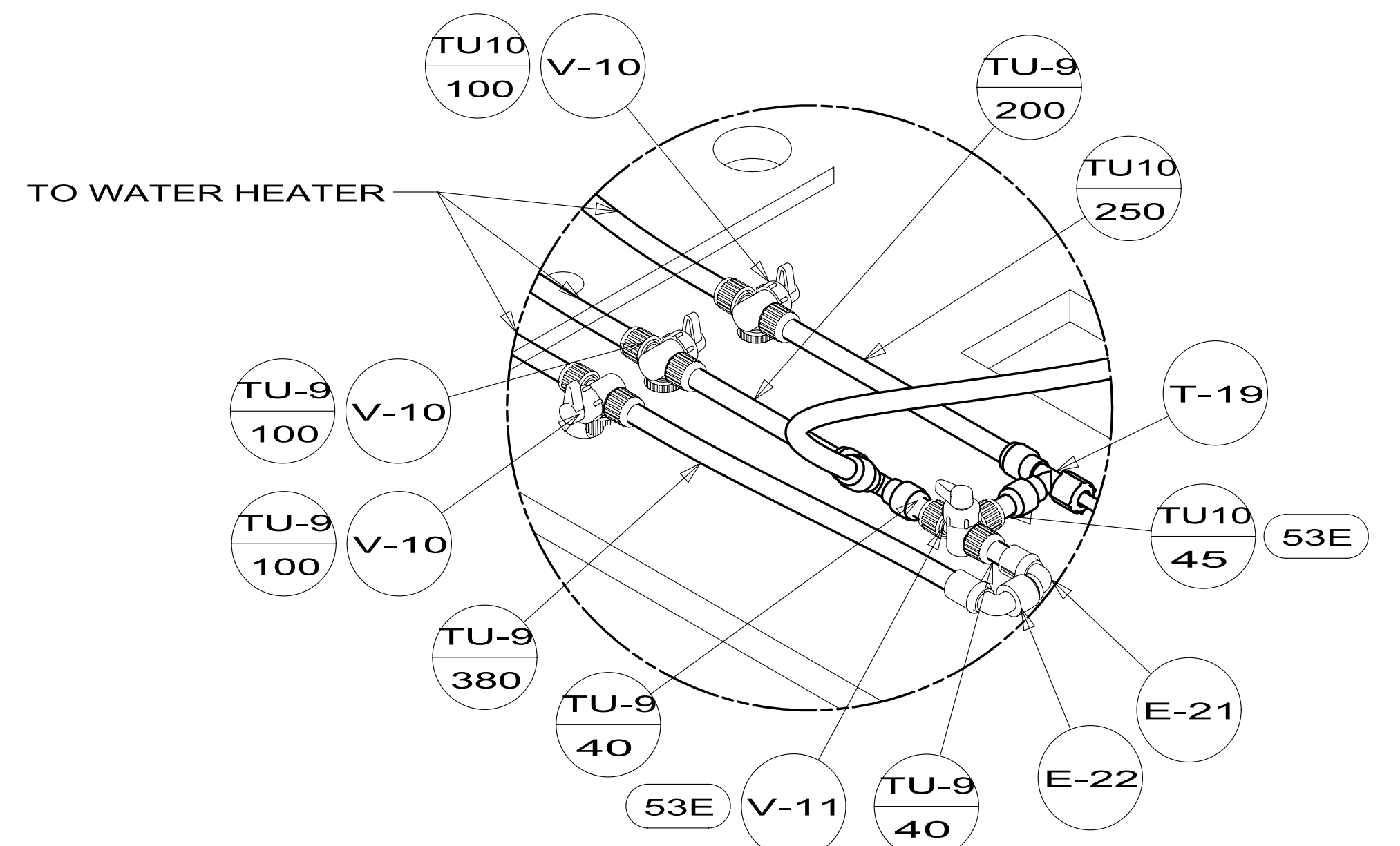
FILTER 12
160946-03-000
SCREW
000G67-10-12U(2)



VIEW L
(SEE TAB)



VIEW K
(SEE TAB)



DETAIL M
(SHOWN W/OUT CABINETS)

FIRST USED	12 231C	
TITLE:	DO NOT SCALE DRAWING	
	WATER SYSTEM INSTL	
SHEET 6	PART NO. 178003	REV