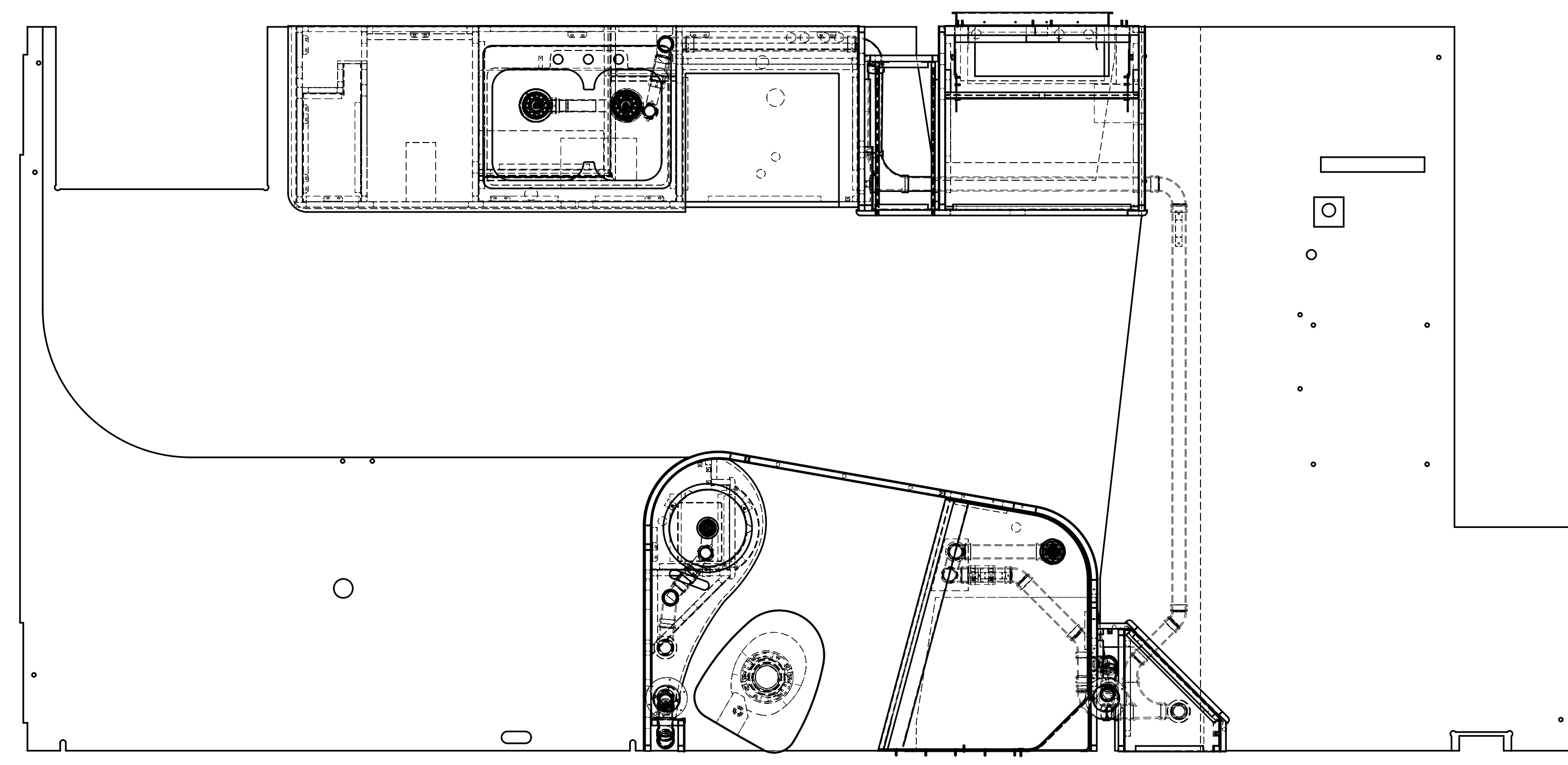


8	7
DWG NO	MODEL
177864-01	226Q
177864-02	226QP
	DETAIL
	G
	H

1	DATE	REV	DATE	REV	DATE
		A			
DWG NO	177864				
REV	ZONE	REVISION RECORD	DATE	DTR-ORIG	

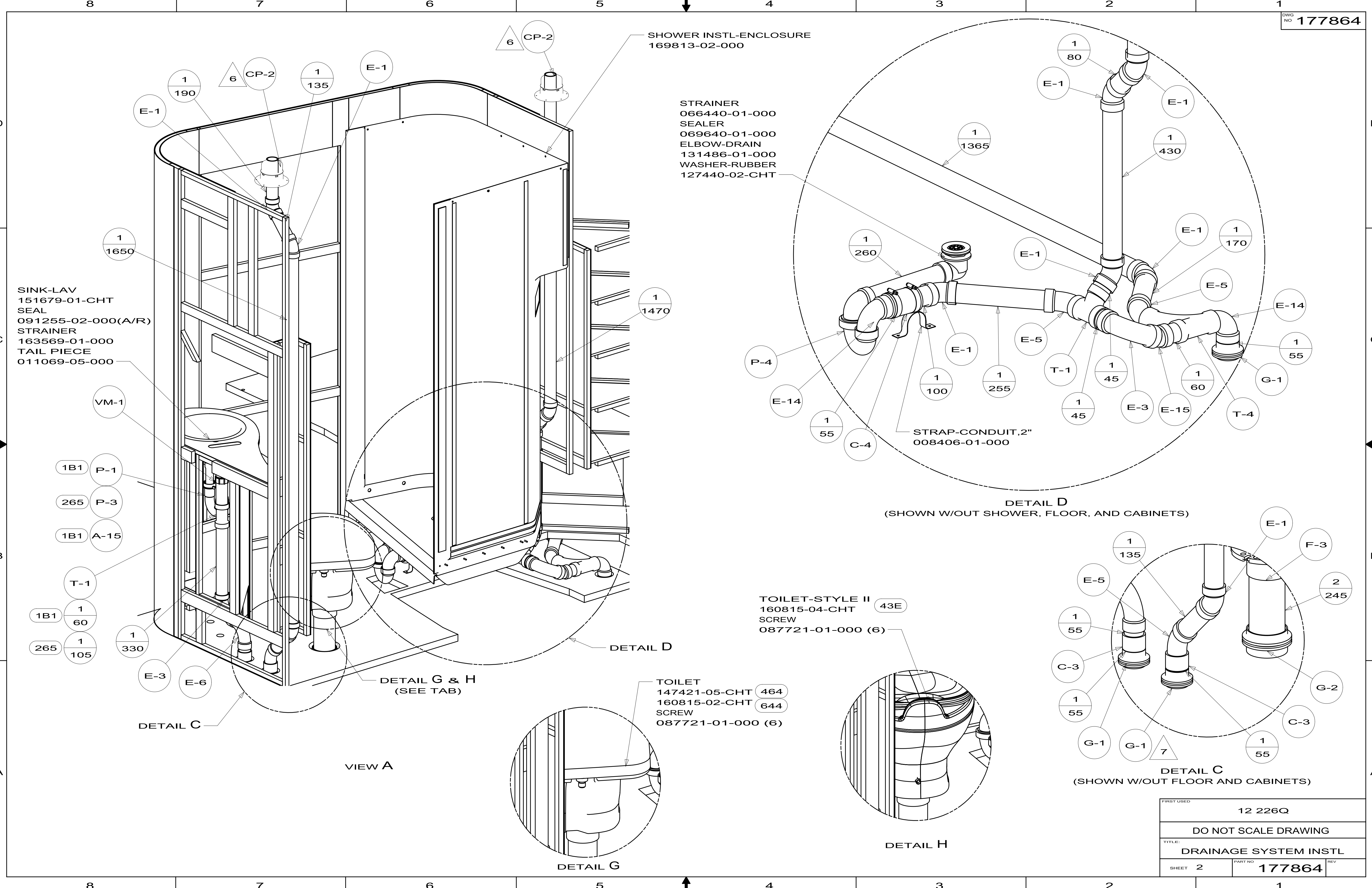


- 11 ROTATE VALVES SO HANDLES CAN BE ACCESSED THROUGH THE DOOR.
- 10 USE SMOOTH PLUMBERS PUTTY 167459-01-000 TO SEAL STRAINER (0.2 PER STRAINER).
9. PREP THE SURFACE PER MANUFACTURERS INSRUCTIONS, BEFORE APPLYING THE HEATING PAD.
8. SECURE DRAINAGE PIPES TO CABINET USING WIRE TIE 108046-02-000, AND SCREW 000G67-10-12B AT INTERVALS OF NOT OF NOT MORE THAN 4 FEET APART.
- 7 SECURE VENT PIPE TO FLOOR WITH CLAMP 062401-02-000 (2),SCREW 000G67-10-12B (2), BRACKET 136878-01-CHT (2).
- 6 VENT PIPE MUST PROJECT 51 MIN AND 64 MAX ABOVE ROOF FOR PROPER FIT AND FUNCTION.
5. SEAL AROUND SHOWER WITH SILICONE.
- 4 SEE WIRING INSTL-BODY, 12V FOR ELECTRICAL CONNECTION.
3. ALL PIPE AND FITTINGS TO BE ASSEMBLED WITH SOLVENT 004020-01-000 (USA), 004020-02-000 (CAN)
2. SLOPE OF TRAP ARM MUST BE 6 PER 305 mm.
1. SLOPE OF HORIZONTAL PIPING TO BE MINIMUM OF 3 PER 305 mm.

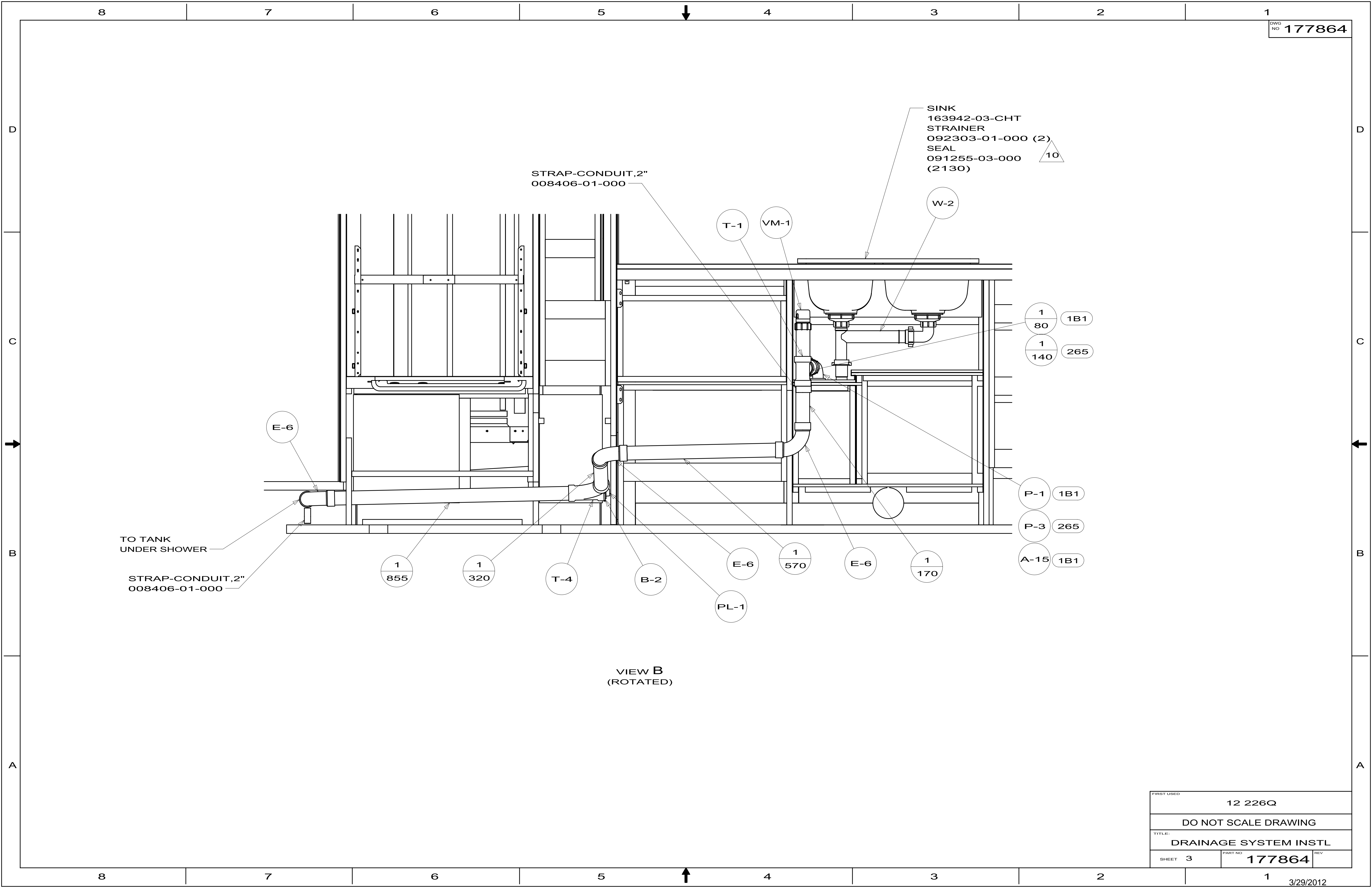
- 649 RENTAL - CANADREAM
- 43E TOILET-PORCELAIN-ROUND
- 644 GREAT ALASKAN RENTAL PACKAGE
- 464 TOILET
- 265 CODES/STANDARDS-CSA/CMVSS
- 23T DRAINAGE SYSTEM-HEATED
- 1B1 CODES/STANDARDS USA

		COPYRIGHT 2012 WINNEBAGO INDUSTRIES, INC.
DTR	ORIG. DATE	
CHKR	ALL DIMENSIONS ARE IN MILLIMETERS	
P.E.		
M.E.	FIRST USED	
DSNR	12 226Q	
UNSPECIFIED TOLERANCES ARE:		MATERIAL:
WHOLE DIM (X)	: 3	
ONE-PLACE (X.X)	: 1.5	
TWO-PLACE (X.XX)	: 0.50	
ANGLE	: 1°	
THIRD ANGLE PROJECTION		
DO NOT SCALE DRAWING		REFER TO ES0018 FOR FASTENER TIGHTENING GUIDELINES
TITLE: DRAINAGE SYSTEM INSTL		
SHEET 1 OF 4	PART NO 177864	REV
REF:	1	

FOR DRAINAGE CALLOUTS SEE DWG NO 116229-01-000



FIRST USED	12 226Q	
DO NOT SCALE DRAWING		
TITLE:	DRAINAGE SYSTEM INSTL	
SHEET 2	PART NO.	177864
	REV	



STRAP-CONDUIT, 2"
008406-01-000

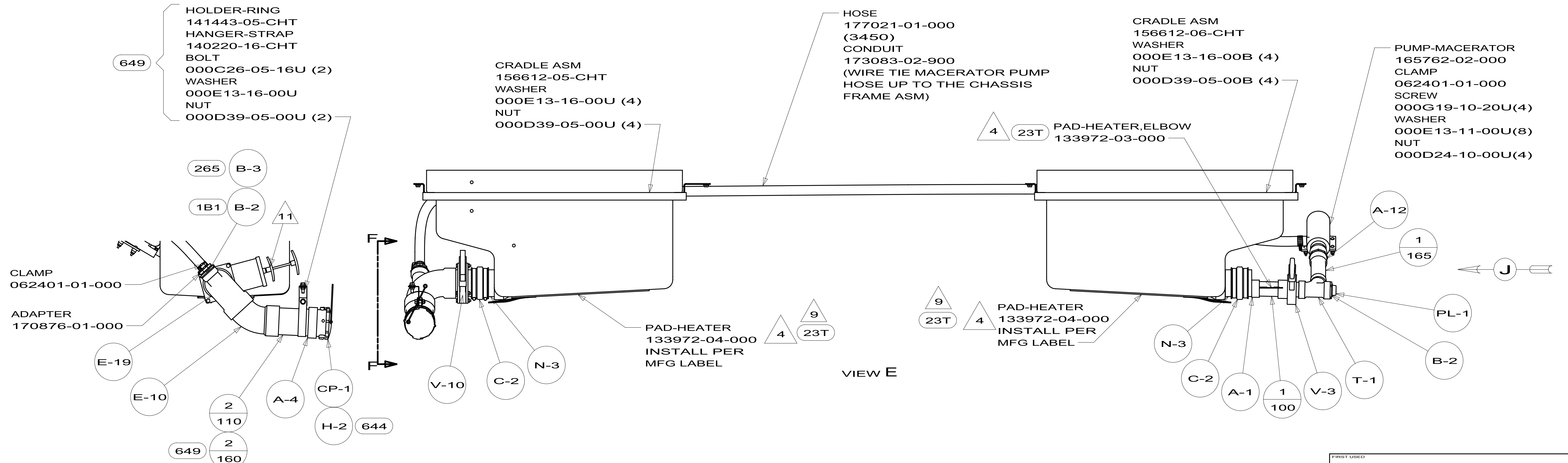
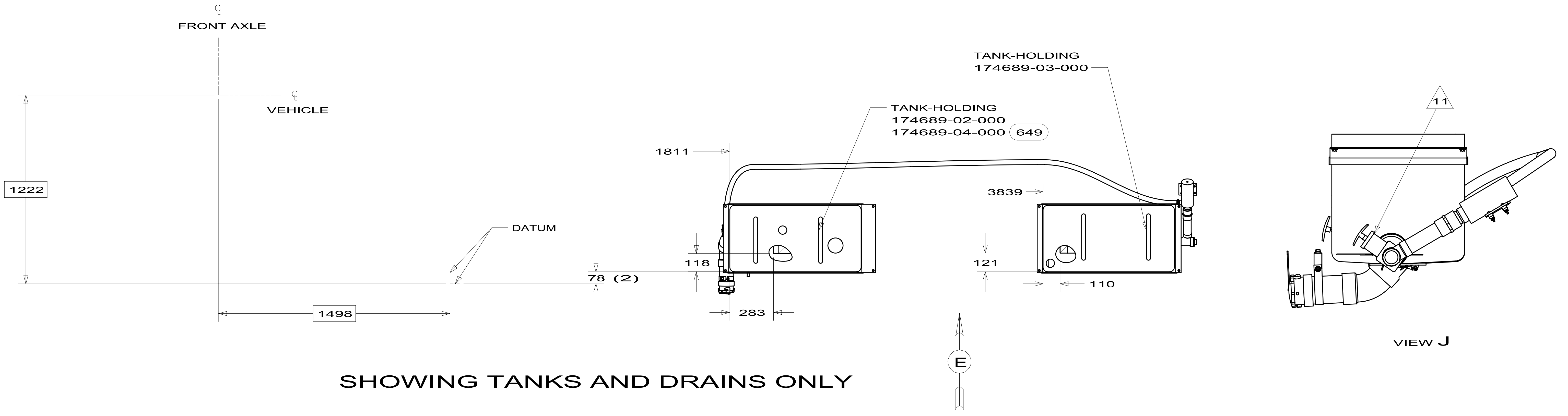
SINK
163942-03-CHT
STRAINER
092303-01-000 (2)
SEAL
091255-03-000 (2130)

TO TANK
UNDER SHOWER

STRAP-CONDUIT, 2"
008406-01-000

VIEW B
(ROTATED)

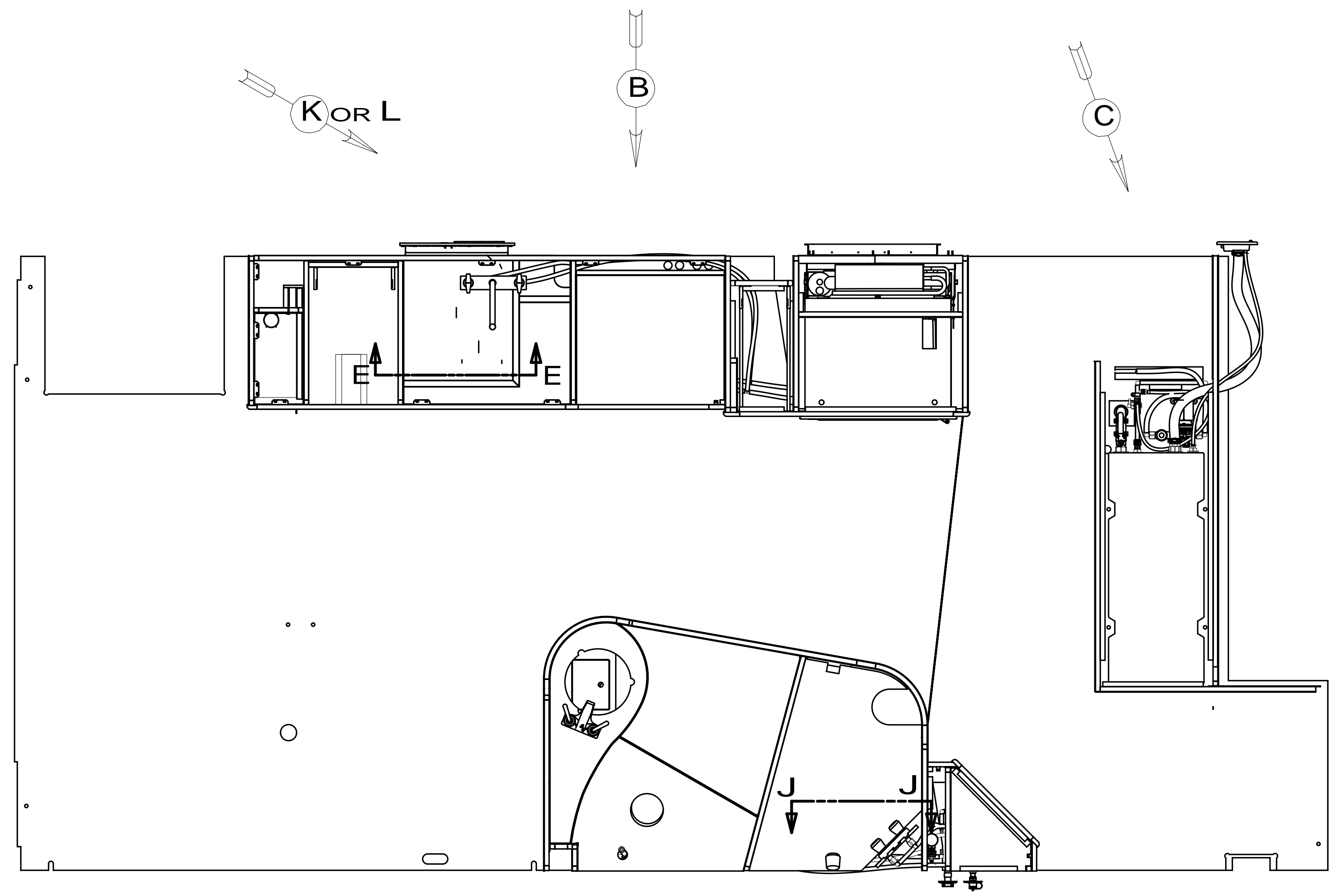
FIRST USED		12 226Q	
DO NOT SCALE DRAWING			
TITLE: DRAINAGE SYSTEM INSTL			
SHEET 3	PART NO	177864	REV



FIRST USED	12 226Q	
TITLE:	DO NOT SCALE DRAWING	
TITLE:	DRAINAGE SYSTEM INSTL	
SHEET 4	PART NO 177864	REV

DWG NO	MODEL	VIEW/DETAIL
178128-01	226Q	K, M
178128-02	226QP	L, N

RELEASE	REV DATE	DWG NO	178128
REV ZONE	REVISION RECORD	DATE	DTR-ORIG



- 11. ATTACH WASHER-PLASTIC 087080-13-CHT W/TAPE-DOUBLE 123816-03 ON BOTTOM SIDE OF FLOOR.
- 10. ATTACH WASHER-PLASTIC 087080-11-CHT W/TAPE-DOUBLE 123816-03 ON BOTTOM SIDE OF COMPARTMENT.

- 9. INSTALL BYPASS PLUG FOR SYSTEM TESTING AND SHIPPING.
- 8. ALL CRIMP FITTINGS TO 1/2" PEX TUBING REQUIRE 1/2" CLAMP 140171-03-000.
- 7. ALL CRIMP FITTINGS TO 5/8" PEX TUBING REQUIRE 5/8" CLAMP 140171-04-000.
- 6. LABEL HOT AND COLD SUPPLY TUBES AND TAPE FITTING TO TUBE BEFORE CABINET SET TO PREVENT MOVEMENT.
- 5. ADD PIPE WRAP (LADDER SCRAP 110157-02-000) INSULATION.
- 4. ADD TEFLON TAPE 010405-02-000.

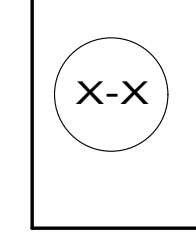
- 3. ALL TUBING TO BE SECURED AT 1200 INTERVALS MAXIMUM WITH CLAMP 010495-01-000 AND SCREW 000G67-10-12U OR EQUIVALENT.
- 2. TUBING TO BE INSTALLED WITH SUFFICIENT SLOPE TO PROVIDE DRAINAGE TO NEAREST VALVE.
- 1. PLASTIC FITTINGS TO BE SEALED WITH SEALANT 084456-01-000.

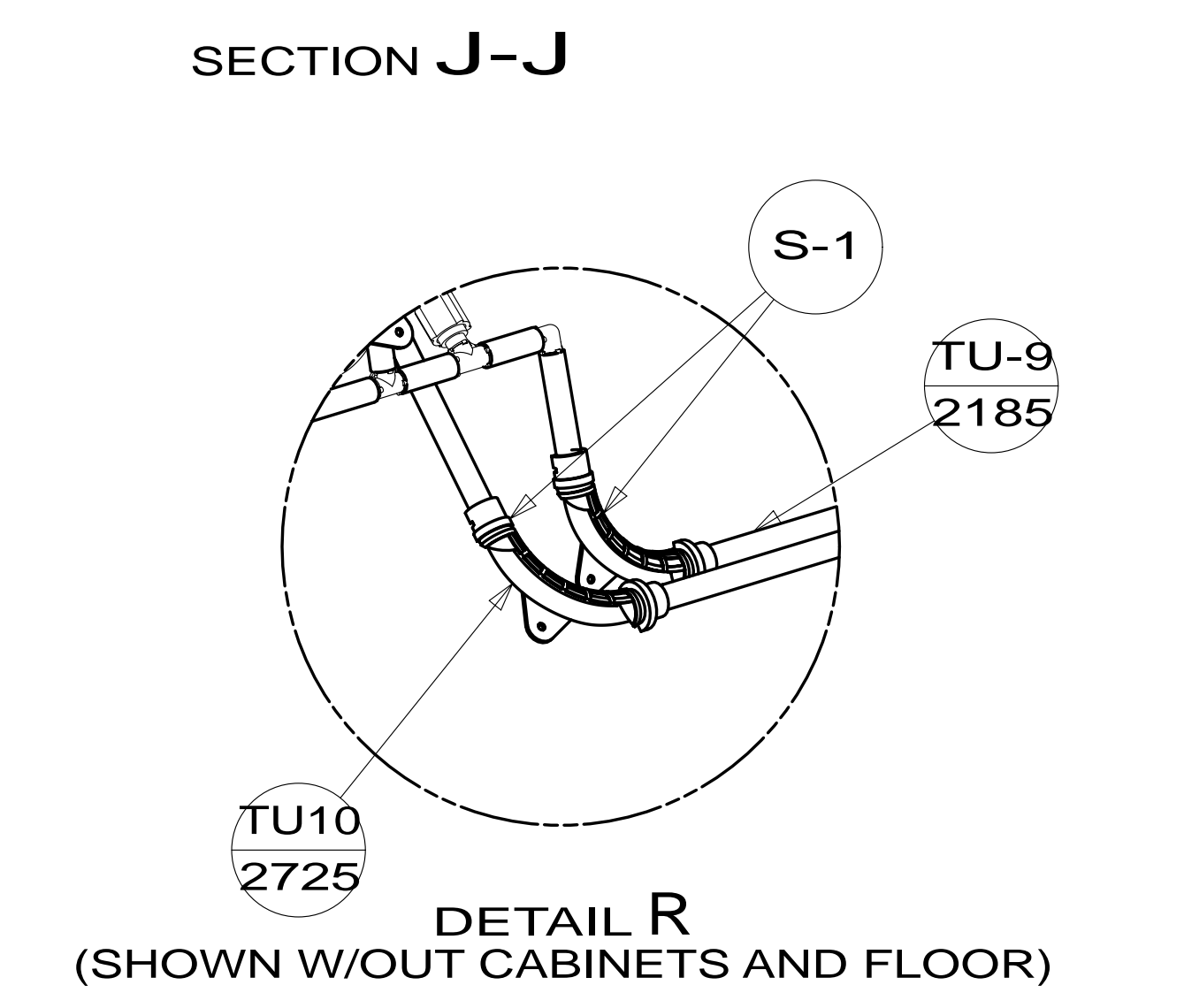
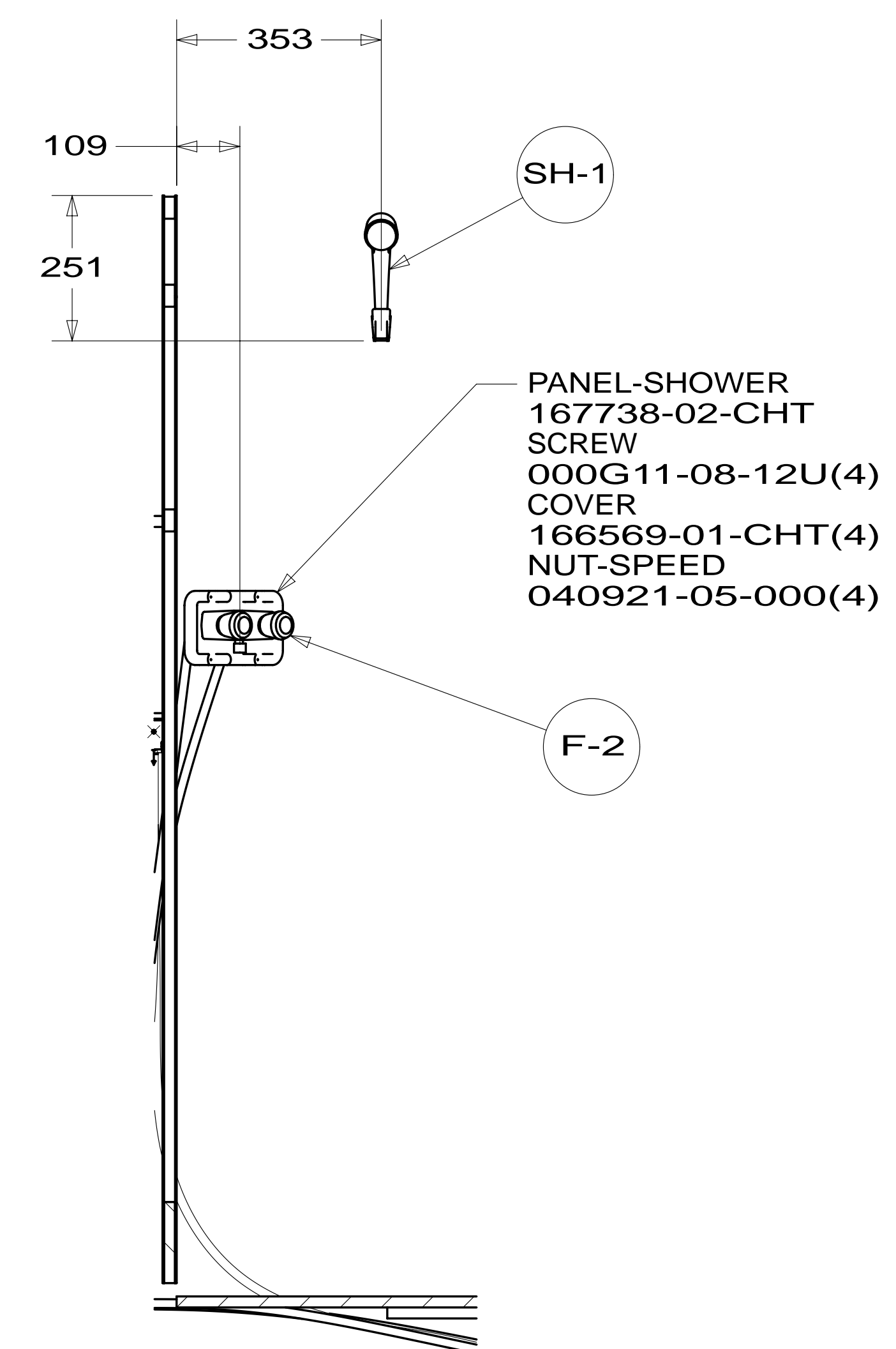
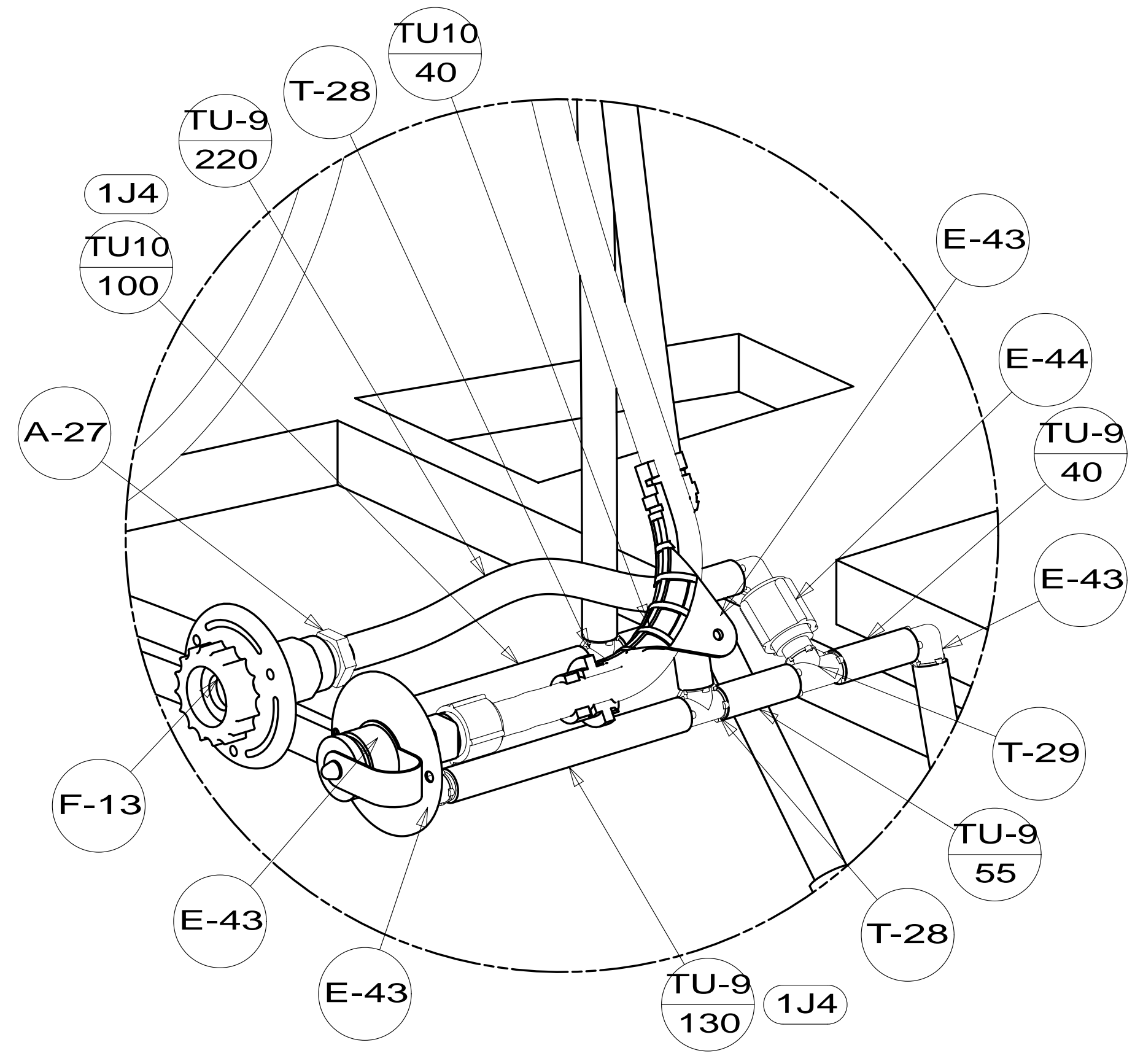
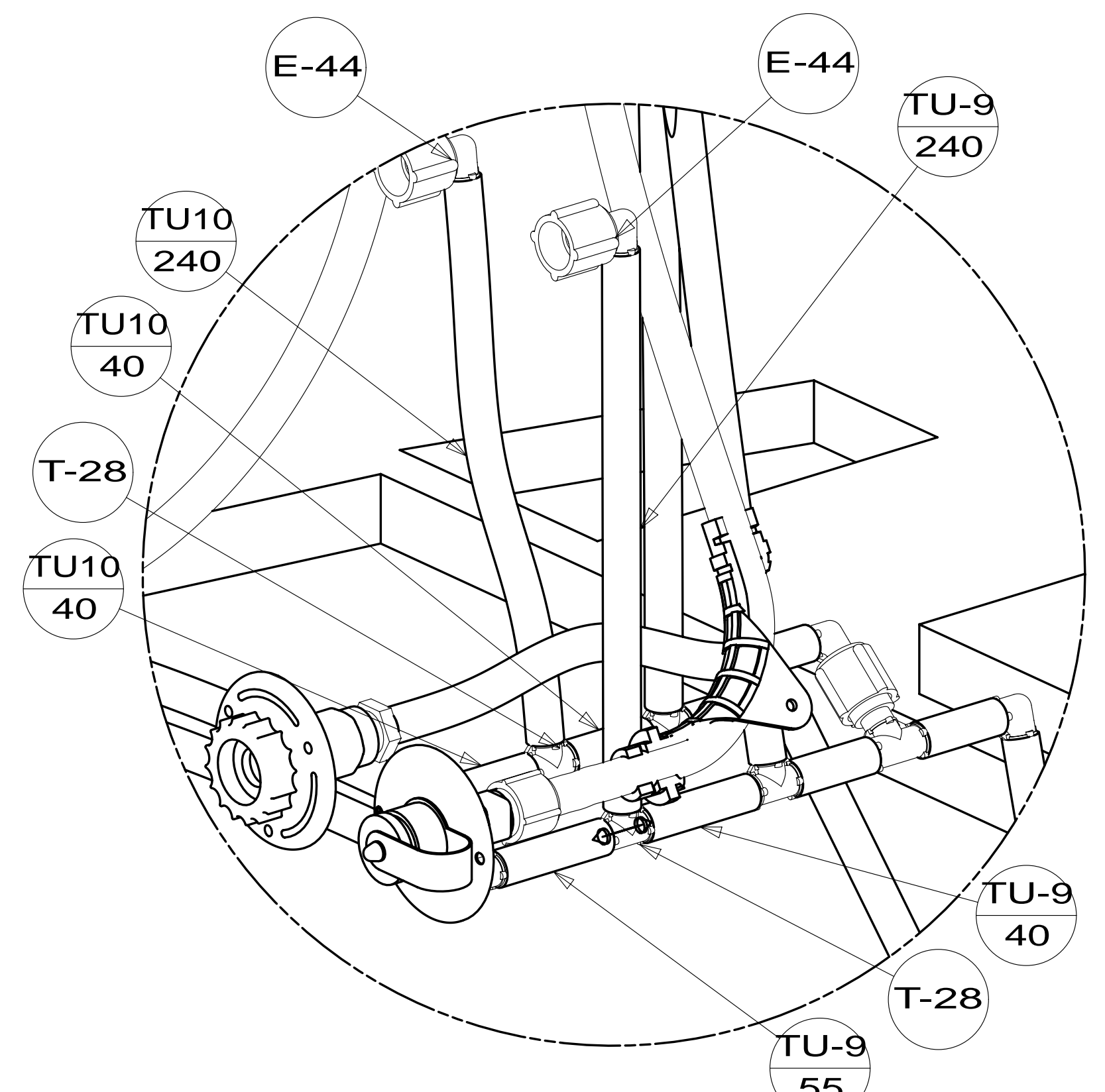
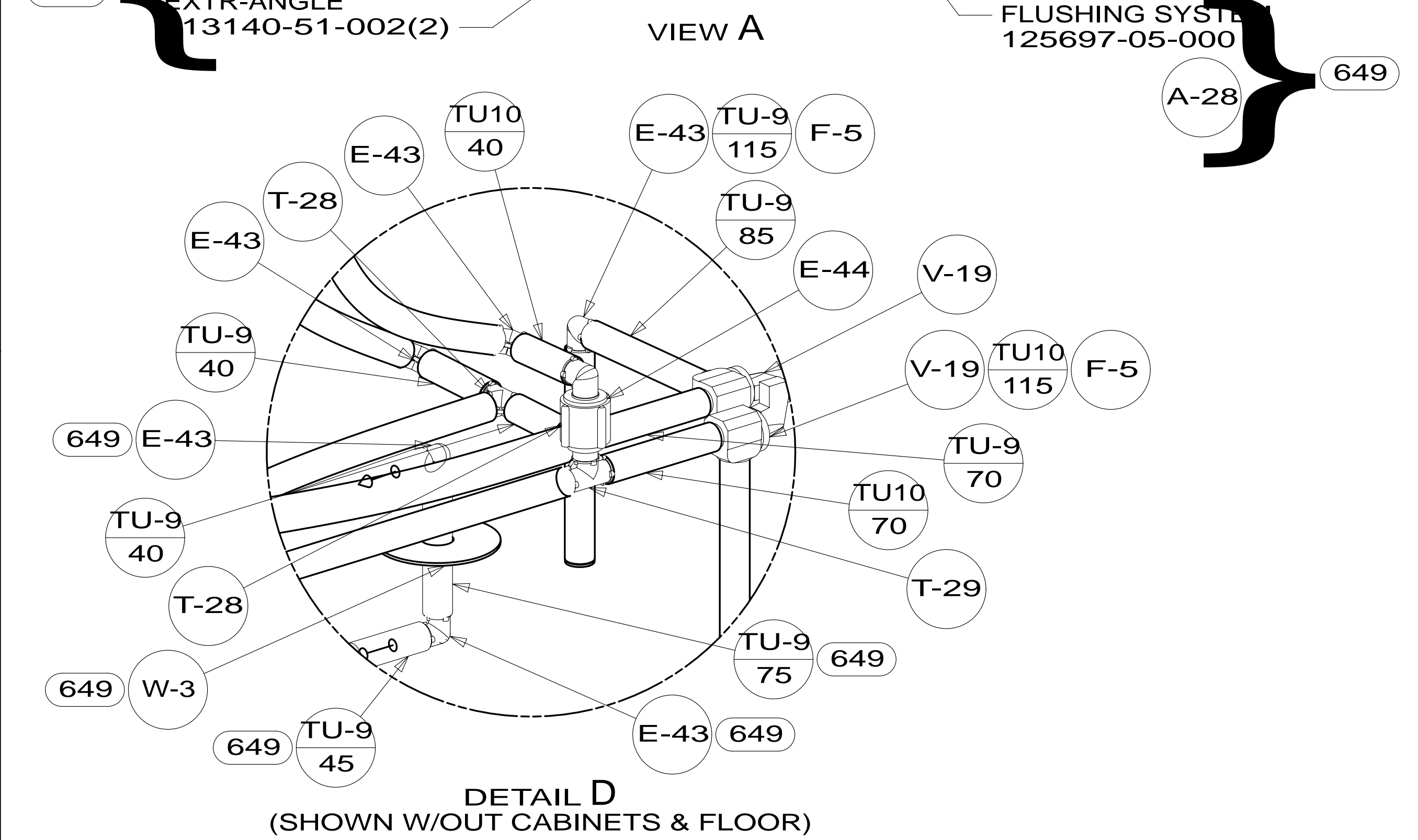
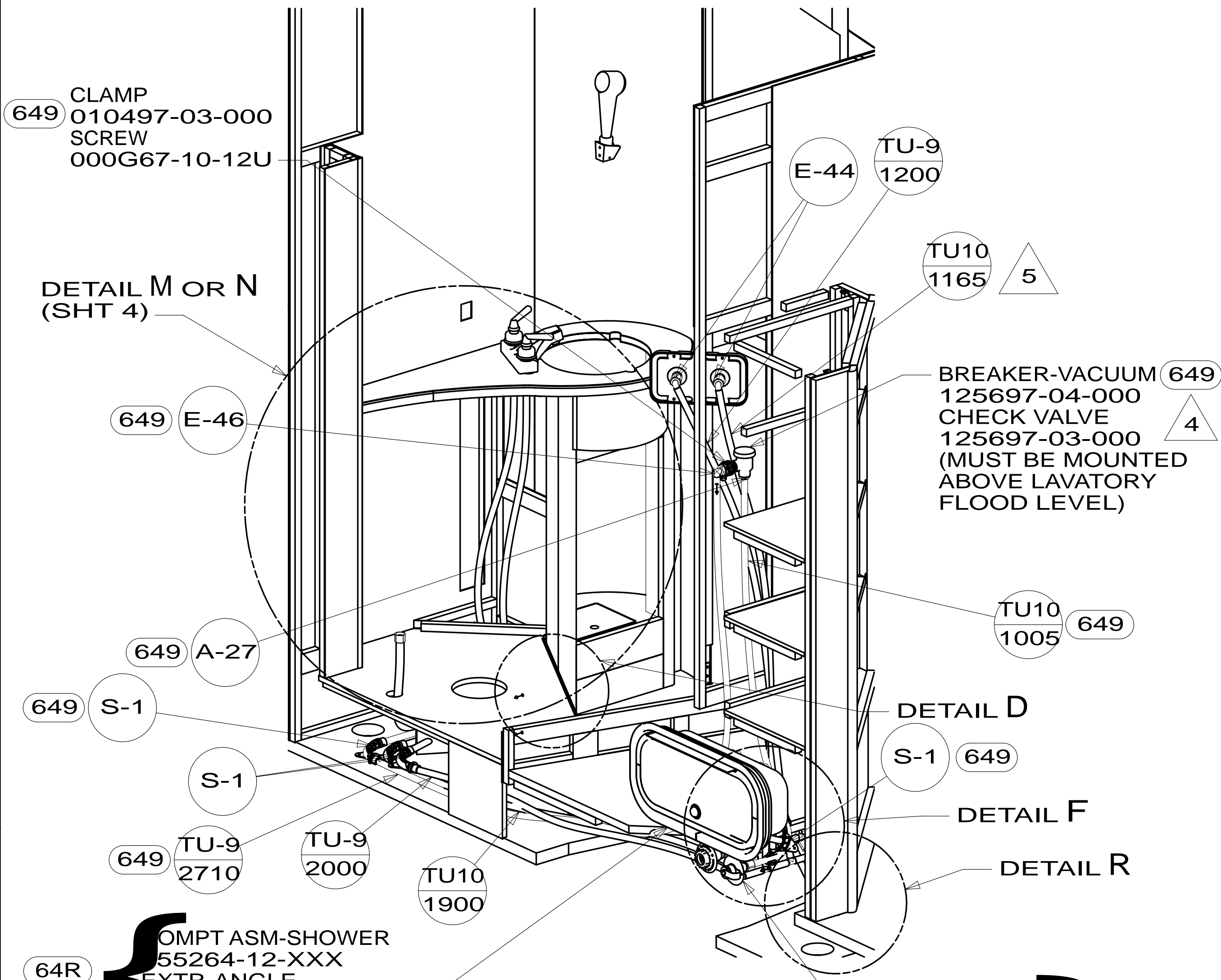
NOTES:

- 649 RENTAL - CANADREAM
- 64R EXTERIOR WASH STATION
- 53Z WTR HTR-6GAL/110/LP/MTR/AUTO
- 1J4 EXT WASH STATION - WITHOUT
- 53F WATER HEATER-ELEC. IGNITION
- 53E WATER SYS WINTERIZATION PKG
- 644 GREAT ALASKAN RENTAL PACKAGE

		COPYRIGHT 2012 WINNEBAGO INDUSTRIES, INC.	
DTR	ORIG. DATE	ALL DIMENSIONS ARE IN MILLIMETERS	
CHKR			
P.E.			
M.E.	FIRST USED		
DSNR		12 226Q/QP	
UNSPECIFIED TOLERANCES ARE:		MATERIAL:	
WHOLE DIM (X)	: 3		
ONE-PLACE (X.X)	: 1.5		
TWO-PLACE (X.XX)	: 0.50		
ANGLE	: 1°		
THIRD ANGLE PROJECTION			
DO NOT SCALE DRAWING		REFER TO ES0018 FOR FASTENER TIGHTENING GUIDELINES	
TITLE: WATER SYSTEM INSTL			
SHEET 1 OF 4	PART NO	178128	REV
REF:	1		

FOR WATER CALLOUTS SEE DWG NO 116230-01-000



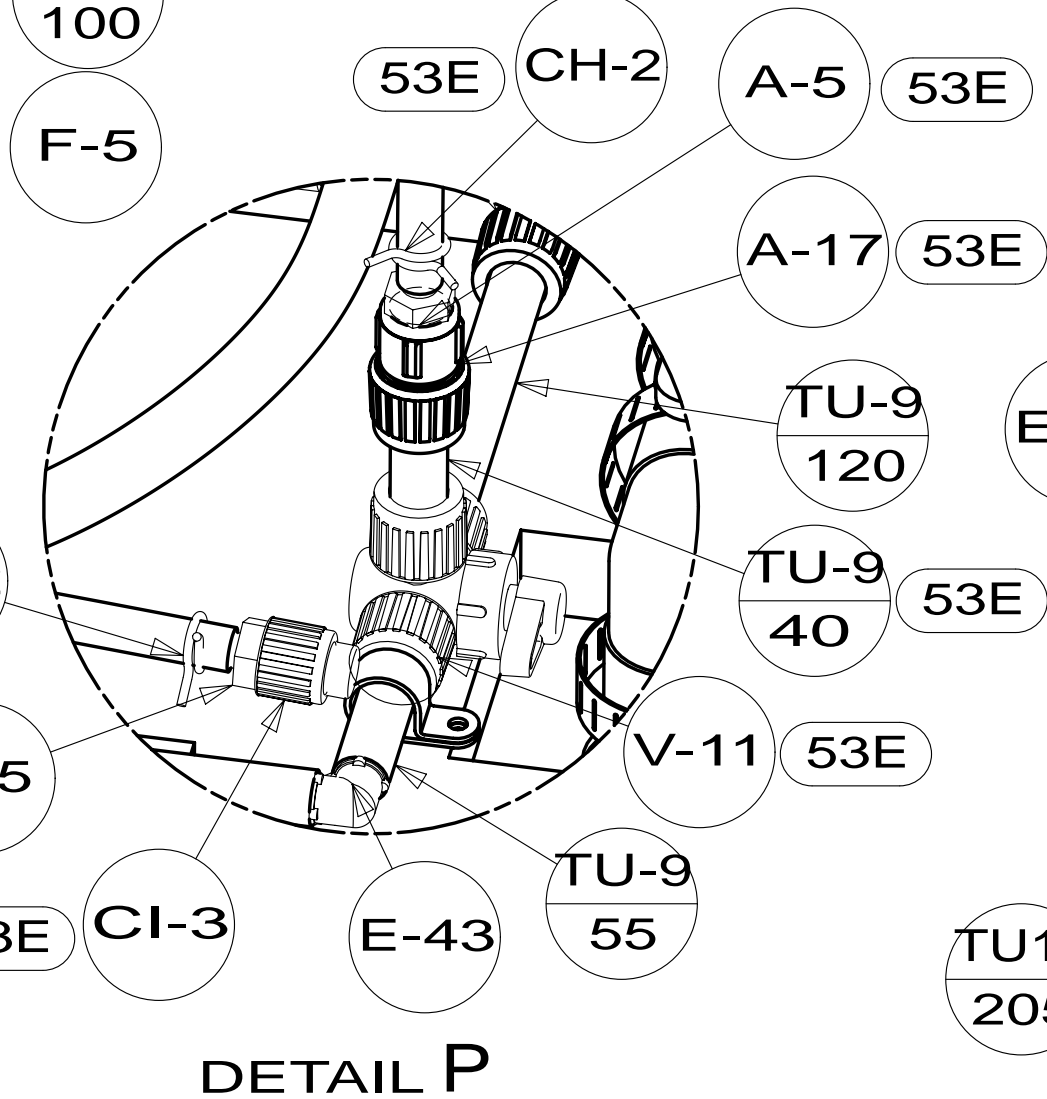
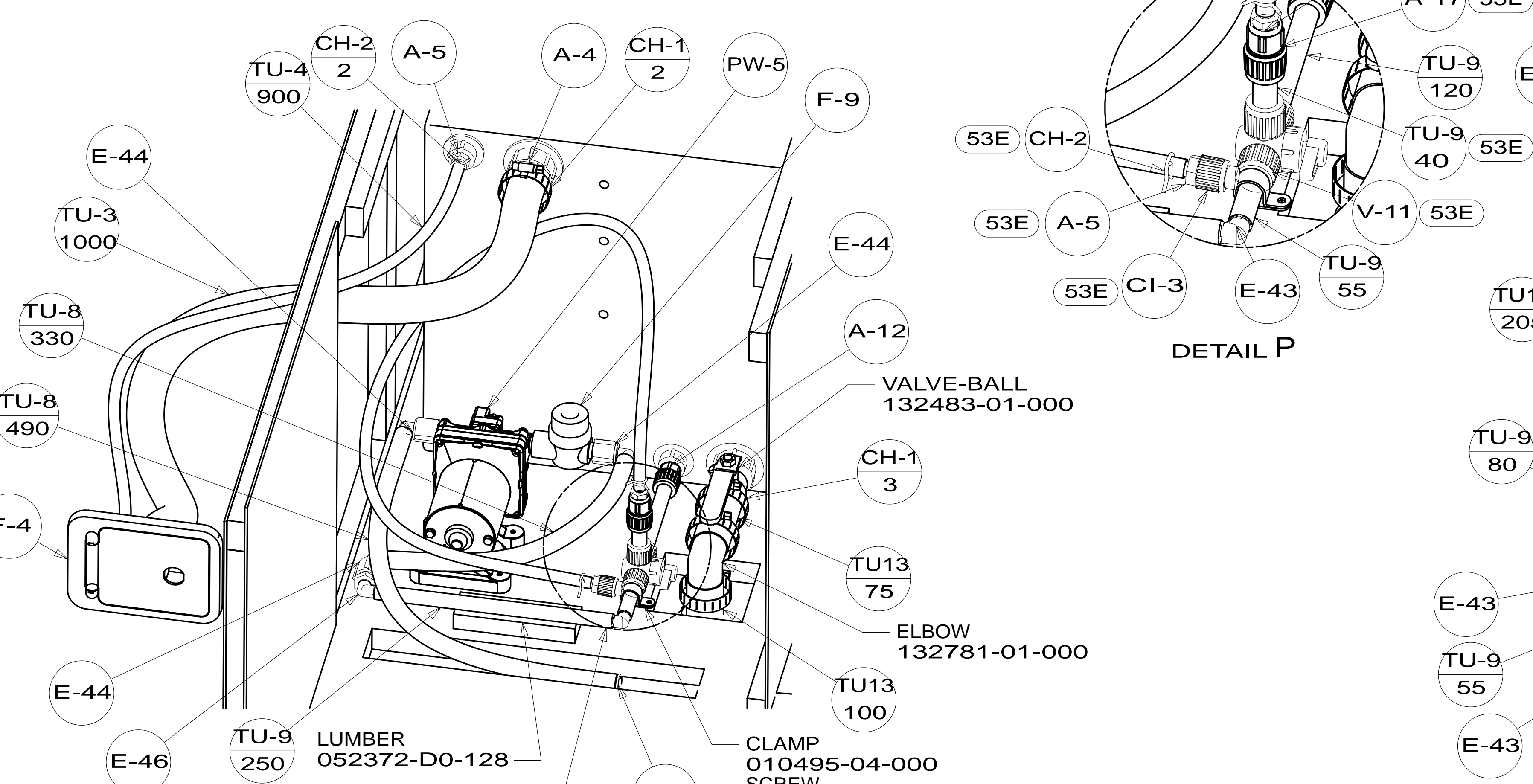
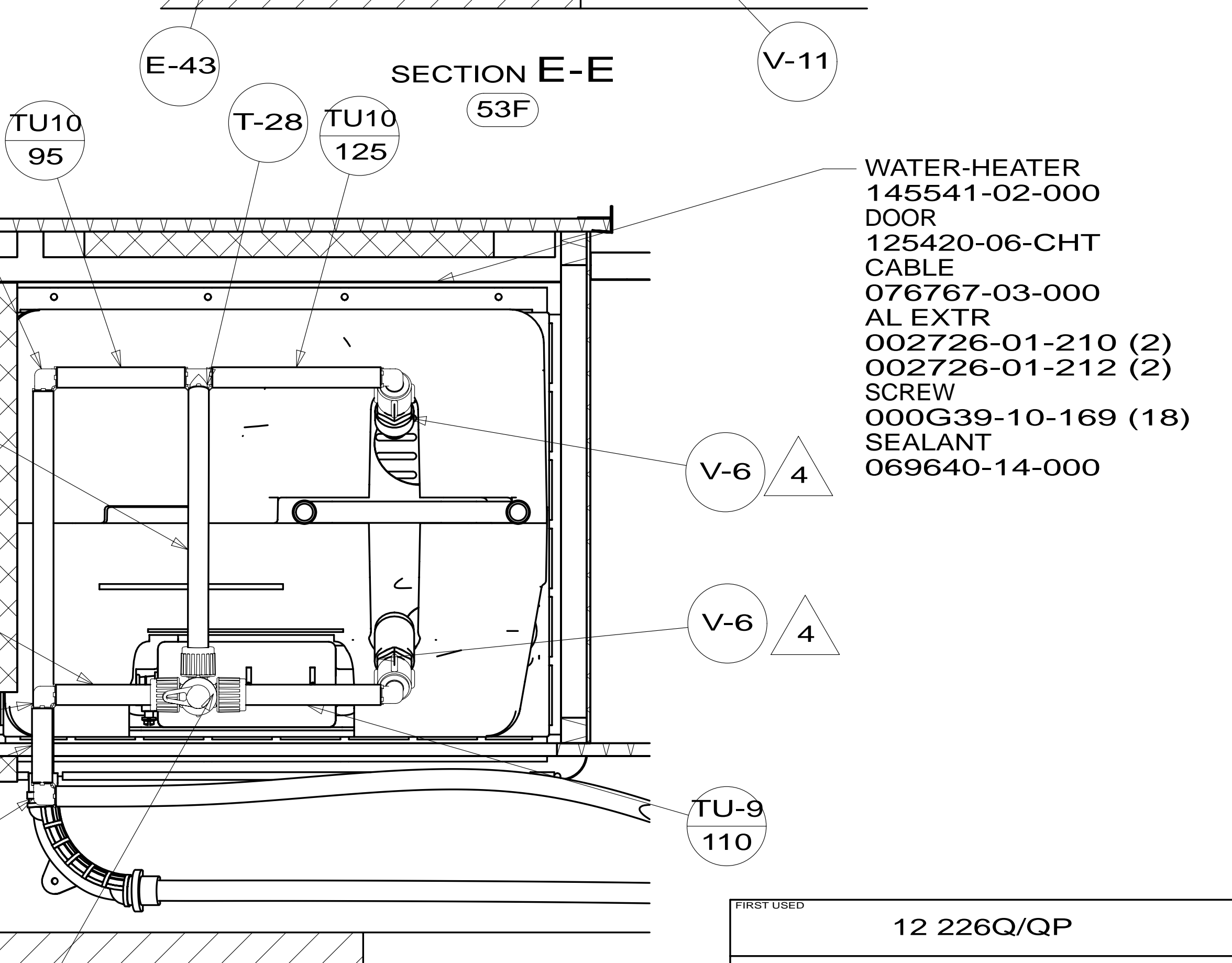
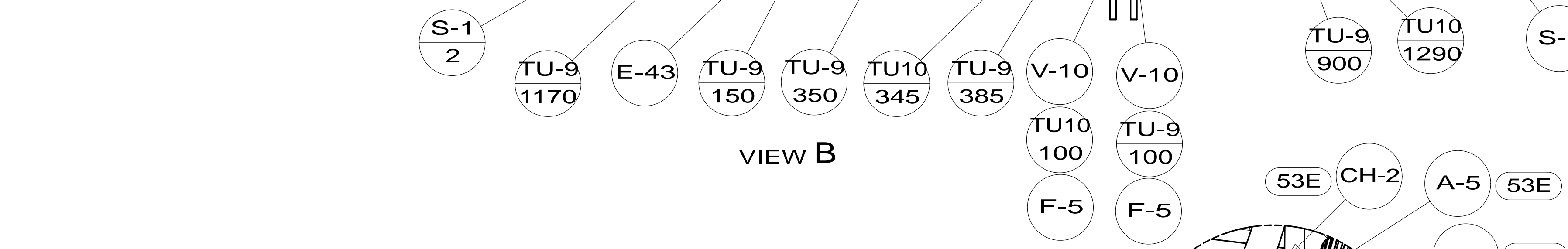
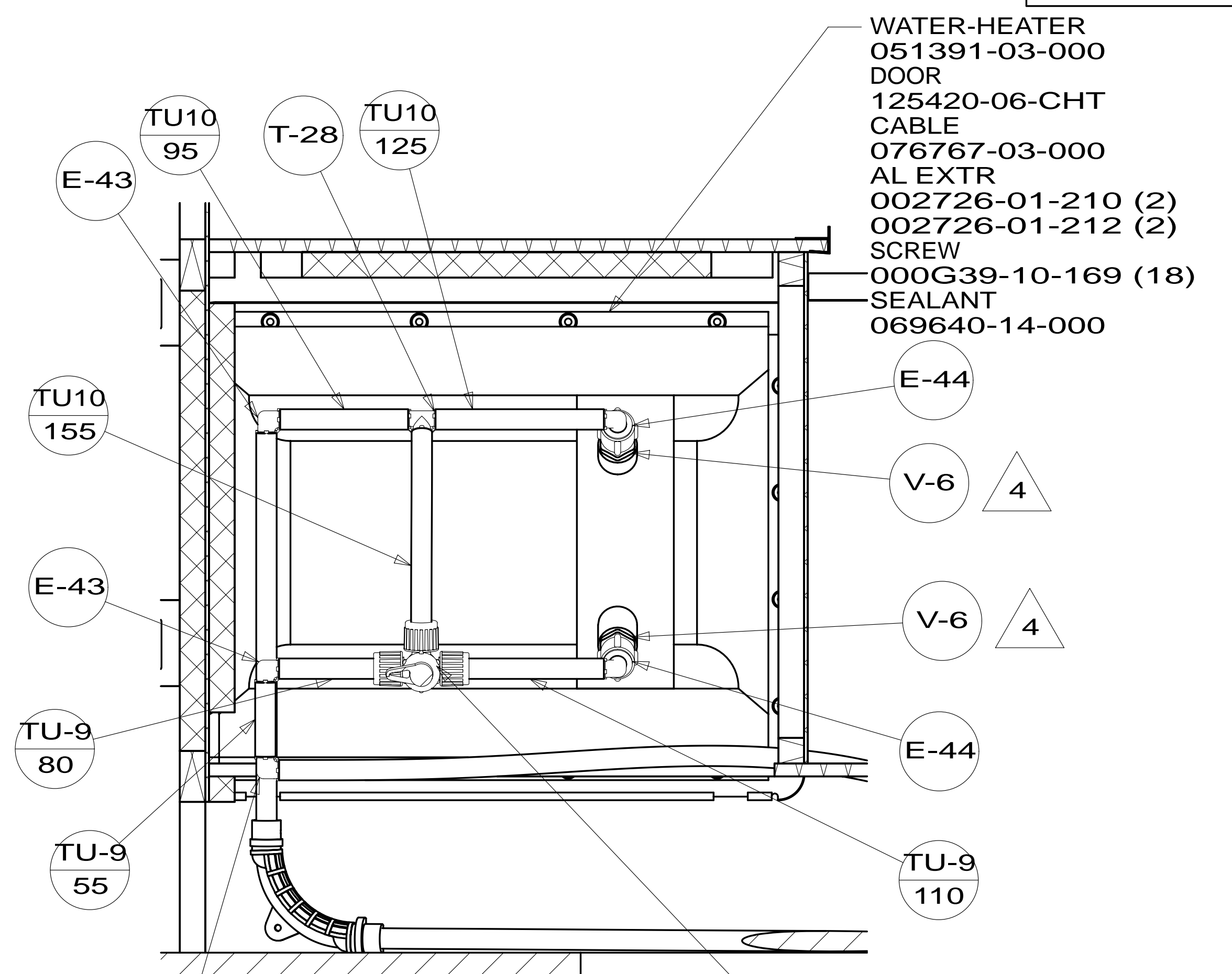
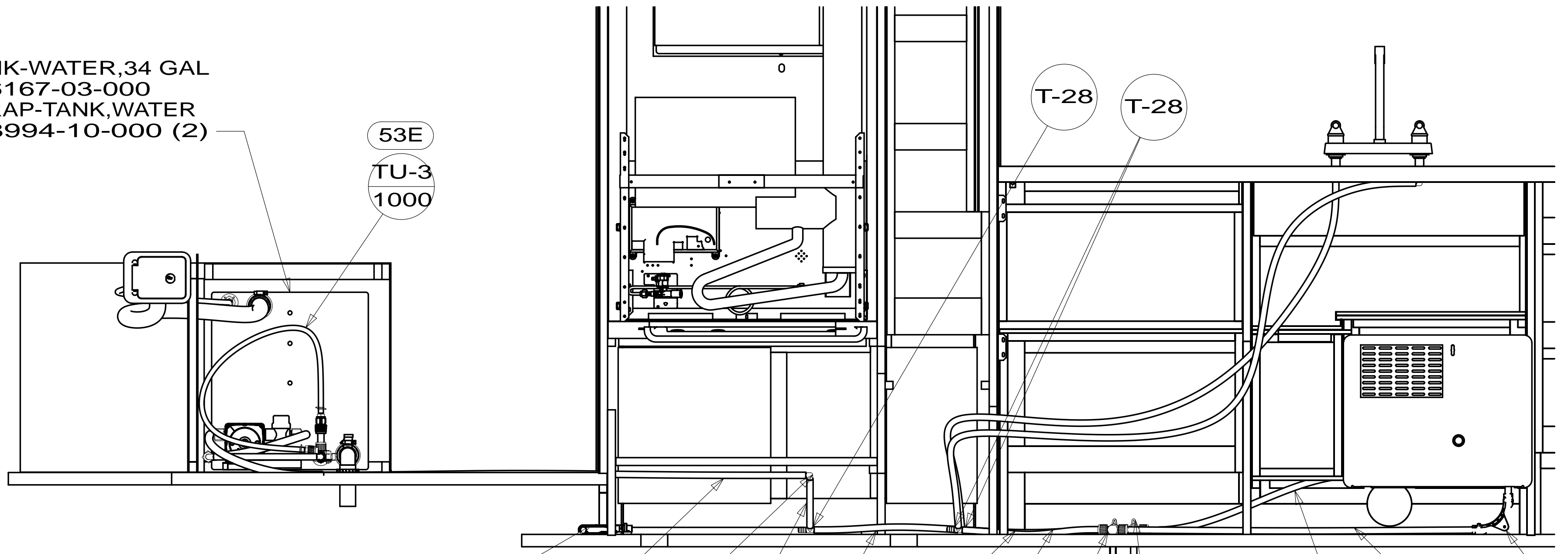


FIRST USED	12 226Q/QP	
	DO NOT SCALE DRAWING	
TITLE:	WATER SYSTEM INSTL	
SHEET 2	PART NO	178128
	REV	

TANK-WATER,34 GAL
156167-03-000
STRAP-TANK,WATER
118994-10-000 (2)

WATER-HEATER
051391-03-000
DOOR
125420-06-CHT
CABLE
076767-03-000
AL EXTR
002726-01-210 (2)
002726-01-212 (2)
SCREW
000G39-10-169 (18)
SEALANT
069640-14-000

WATER-HEATER
145541-02-000
DOOR
125420-06-CHT
CABLE
076767-03-000
AL EXTR
002726-01-210 (2)
002726-01-212 (2)
SCREW
000G39-10-169 (18)
SEALANT
069640-14-000



VIEW B

SECTION E-E

DETAIL P

VIEW C

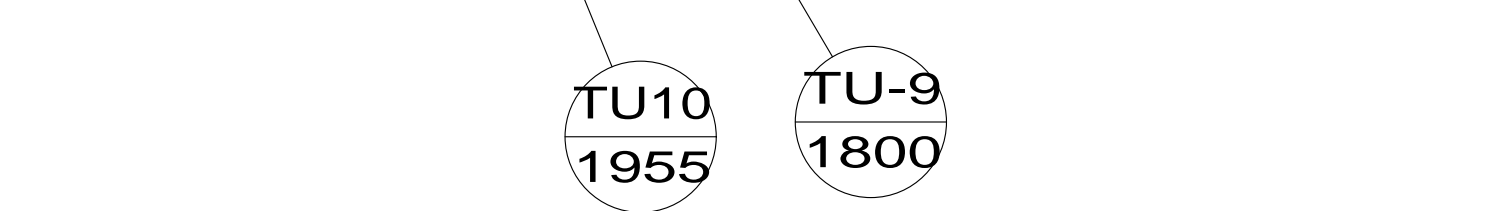
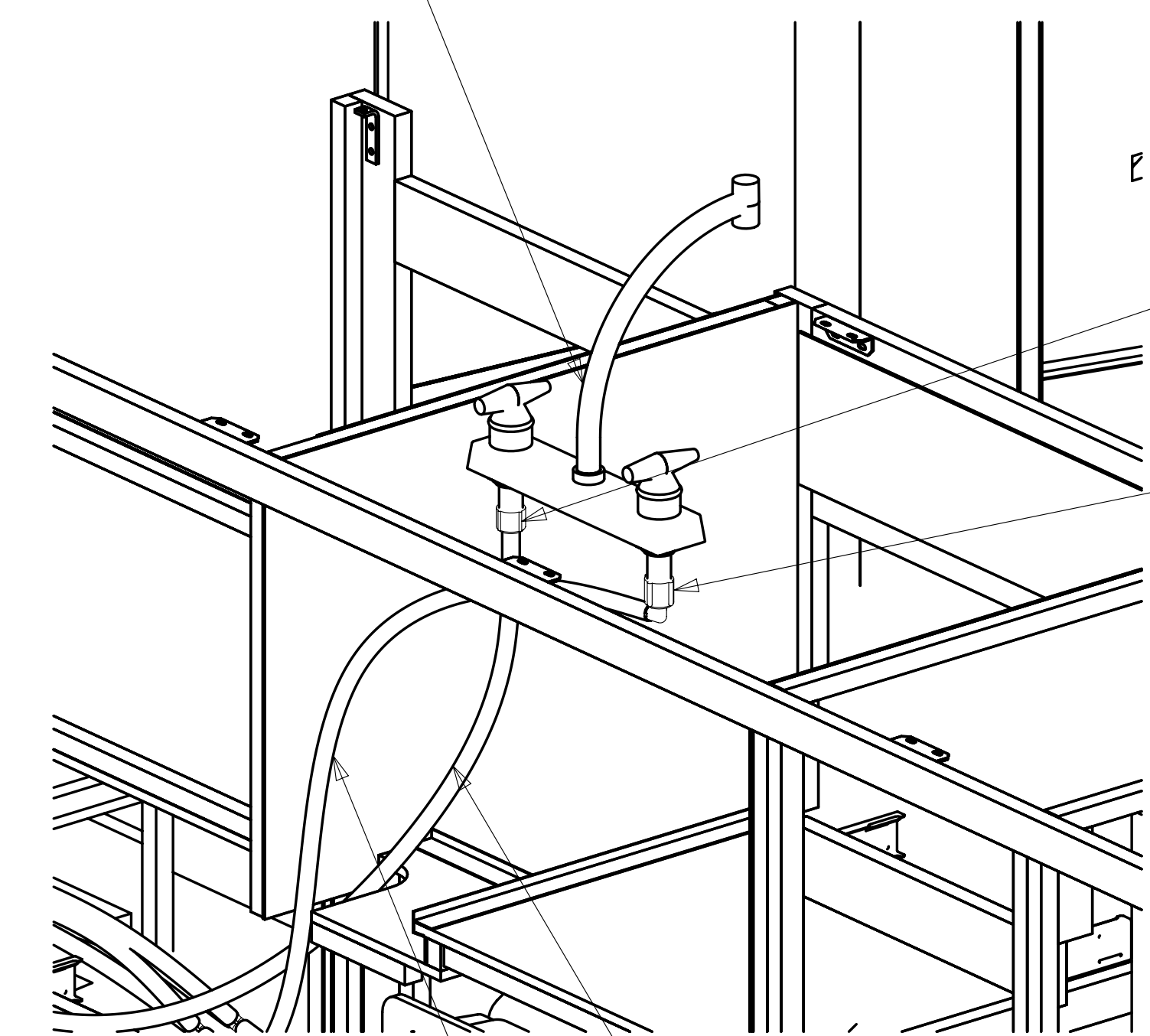
SECTION E-E

FIRST USED	12 226Q/QP
DO NOT SCALE DRAWING	
TITLE: WATER SYSTEM INSTL	
SHEET 3	PART NO 178128 REV

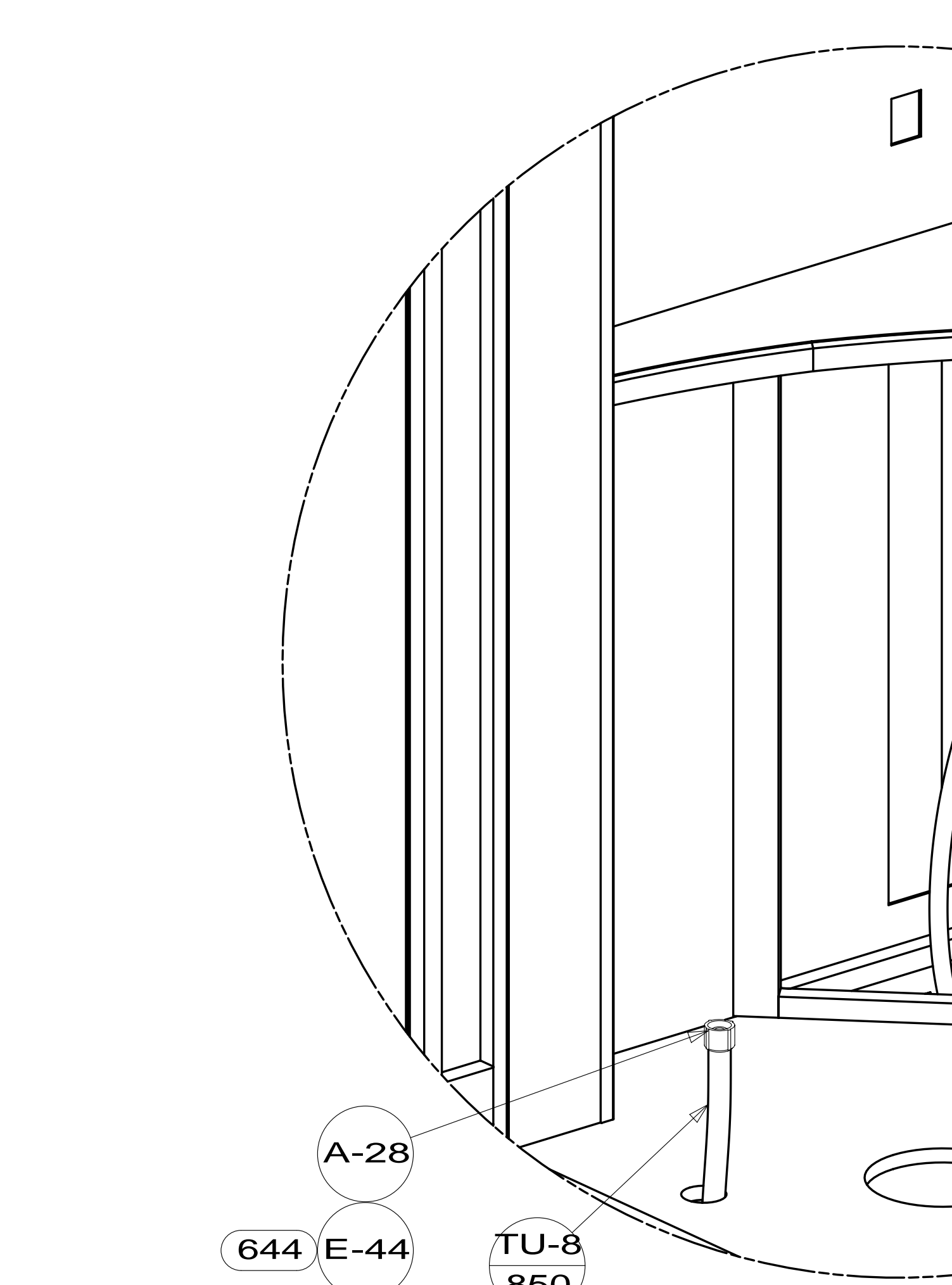
FAUCET-GALLEY
140117-03-CHT

FAUCET-GALLEY
149164-01-CHT

FAUCET-GALLEY
149164-01-CHT

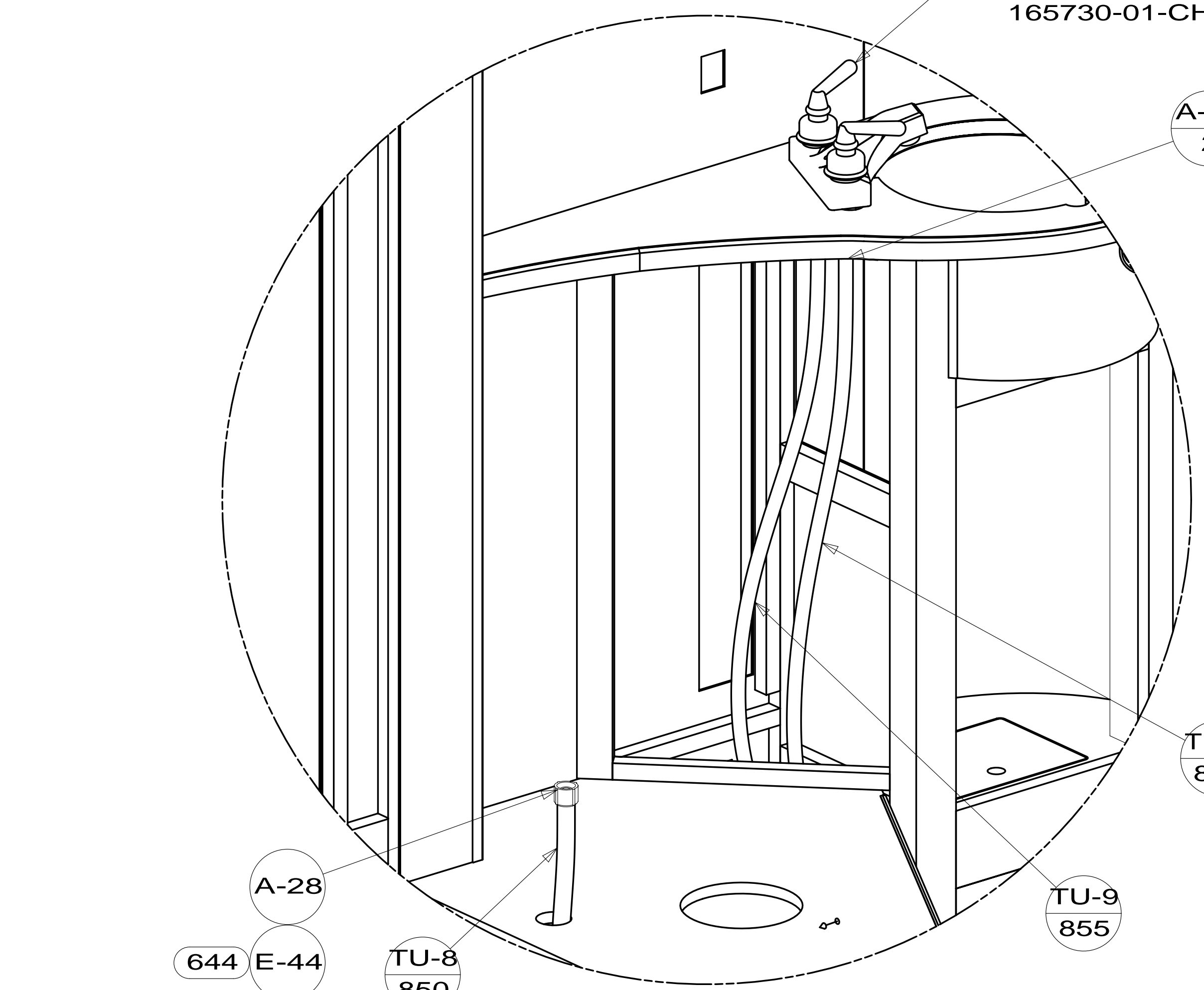


VIEW K
(SHOWN W/OUT COUNTERTOP)



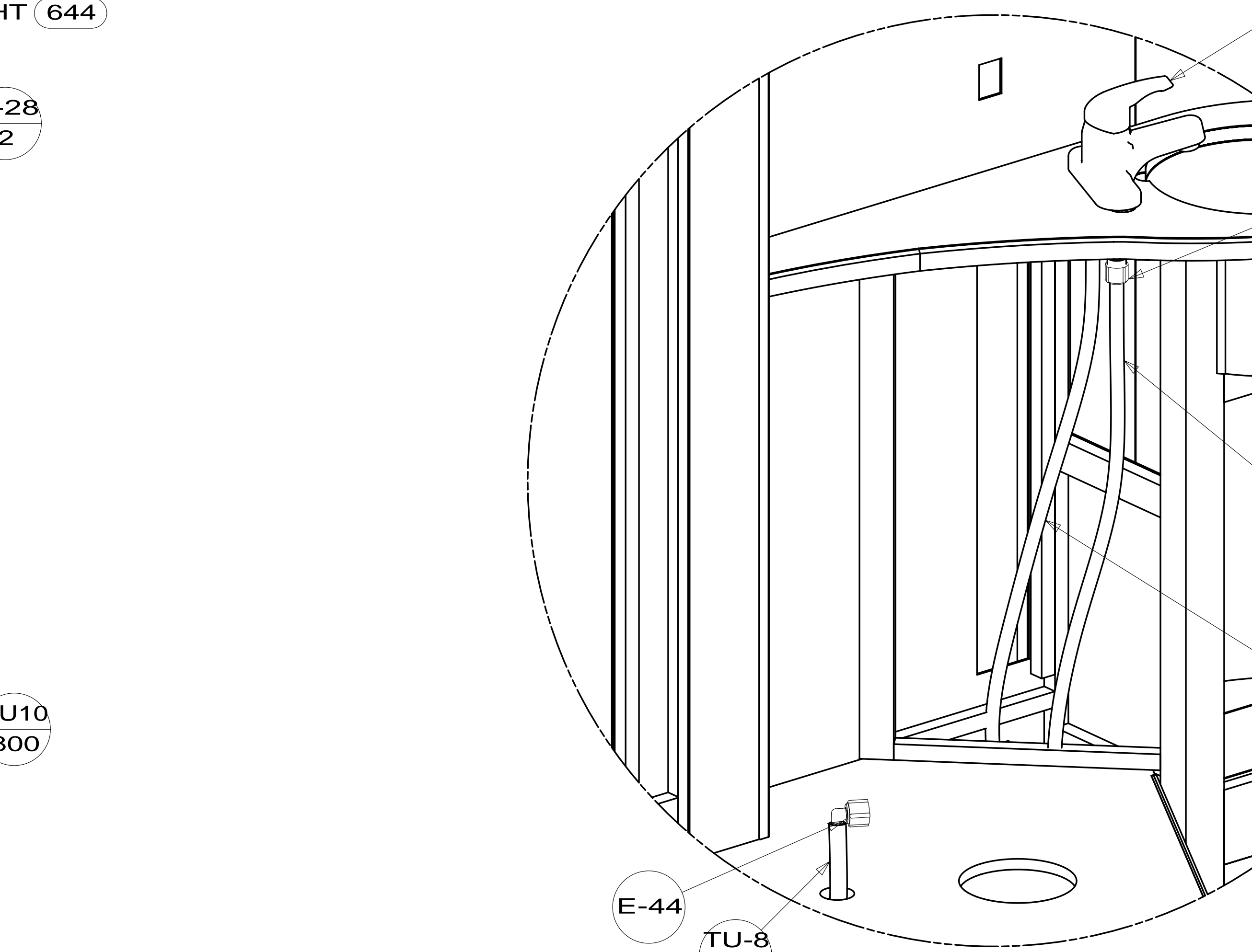
VIEW L
(SHOWN W/OUT COUNTERTOP)

FAUCET-LAV
148886-03-CHT
165730-01-CHT 644



DETAIL M

FAUCET-LAV
165730-01-CHT



DETAIL N

FILTER
160946-03-000
SCREW
000G67-10-12U(2)

FIRST USED	12 226Q/QP
DO NOT SCALE DRAWING	
TITLE: WATER SYSTEM INSTL	
SHEET 4	PART NO 178128 REV