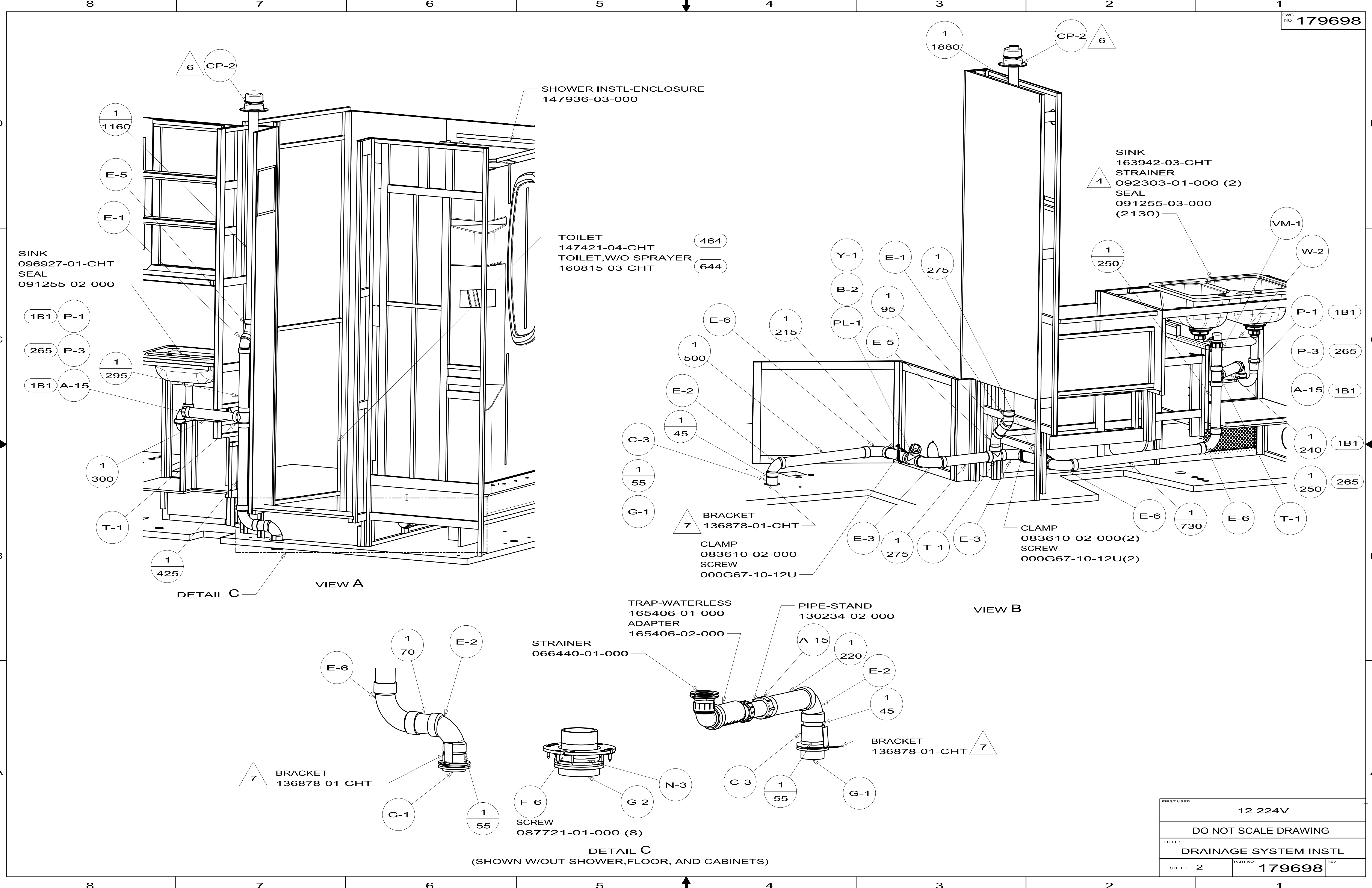


- NOTES:
1. SLOPE OF HORIZONTAL PIPING TO BE MINIMUM OF 3 PER 305 mm.
 2. SLOPE OF TRAP ARM MUST BE 6 PER 305 mm.
 3. ALL PIPE AND FITTINGS TO BE ASSEMBLED WITH SOLVENT 004020-01-000 (USA), 004020-02-000 (CAN)
 4. USE SMOOTH PLUMBERS PUTTY 167459-01-000 TO SEAL STRAINER (0.2 PER STRAINER).
 5. SEAL AROUND SHOWER WITH SILICONE.
 6. VENT PIPE MUST PROJECT 51 MIN AND 64 MAX ABOVE ROOF FOR PROPER FIT AND FUNCTION. ADD S-1 (116666-01-CHT SEAL-VENT PIPE) AROUND PIPE ON ROOF BEFORE VENT CAP IS INSTALLED.
 7. SECURE VENT PIPE TO FLOOR WITH CLAMP 062401-02-000 (2), SCREW 000G67-10-12B (2), BRACKET 136878-01-CHT (2).
 8. SECURE DRAINAGE PIPES TO CABINET USING WIRE TIE 108046-02-000, AND SCREW 000G67-10-12B AT INTERVALS OF NOT MORE THAN 4 FEET APART.
 9. SEE DRAWING 061607 FOR INSTALLATION OF GROMMETS.
 10. PREP THE SURFACE PER MANUFACTURERS INSTRUCTIONS BEFORE APPLYING THE HEATING PAD.
 11. SEE WIRING INSTL-BODY FOR ELECTRICAL CONNECTION.

- 644 GREAT ALASKAN RENTAL PACKAGE
- 1B1 CODES/STANDARDS USA
- 265 CODES/STANDARDS-CSA/CMVSS
- 23T DRAINAGE SYSTEM-HEATED
- 464 TOILET

FOR DRAINAGE CALLOUTS SEE DWG NO 116229-01-000

		COPYRIGHT 2011 WINNEBAGO INDUSTRIES, INC.	
DTR	ORIG. DATE	ALL DIMENSIONS ARE IN MILLIMETERS	
CHKR			
P.E.			
M.E.	FIRST USED	12 224V	
DSNR			
UNSPECIFIED TOLERANCES ARE:		MATERIAL:	
WHOLE DIM (X)	: 3		
ONE-PLACE (X.X)	: 1.5		
TWO-PLACE (X.XX)	: 0.50		
ANGLE	: 1°		
THIRD ANGLE PROJECTION			
DO NOT SCALE DRAWING		REFER TO ES0018 FOR FASTENER TIGHTENING GUIDELINES	
TITLE: DRAINAGE SYSTEM INSTL			
SHEET 1 OF 3	PART NO 179698	REV	
REF:	1		



SINK
096927-01-CHT
SEAL
091255-02-000

1B1 P-1
265 P-3
1B1 A-15

1 300
T-1
1 425

DETAIL C VIEW A

SHOWER INSTL-ENCLOSURE
147936-03-000

TOILET
147421-04-CHT
TOILET, W/O SPRAYER
160815-03-CHT

464
644

SINK
163942-03-CHT
STRAINER
092303-01-000 (2)
SEAL
091255-03-000
(2130)

VM-1
W-2
P-1 1B1
P-3 265
A-15 1B1

1 240 1B1
1 250 265

BRACKET
136878-01-CHT
CLAMP
083610-02-000
SCREW
000G67-10-12U

CLAMP
083610-02-000(2)
SCREW
000G67-10-12U(2)

VIEW B

TRAP-WATERLESS
165406-01-000
ADAPTER
165406-02-000

STRAINER
066440-01-000

PIPE-STAND
130234-02-000

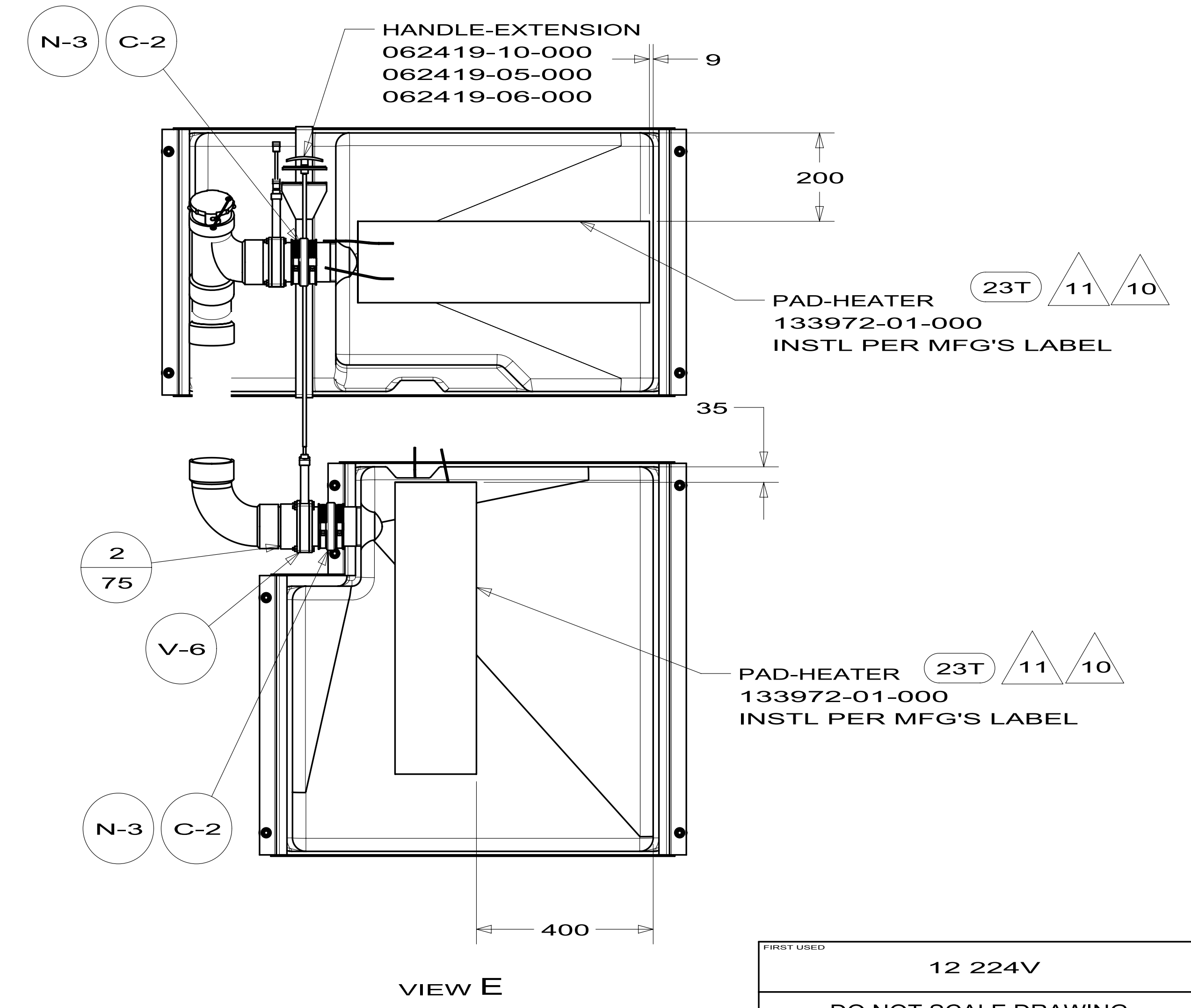
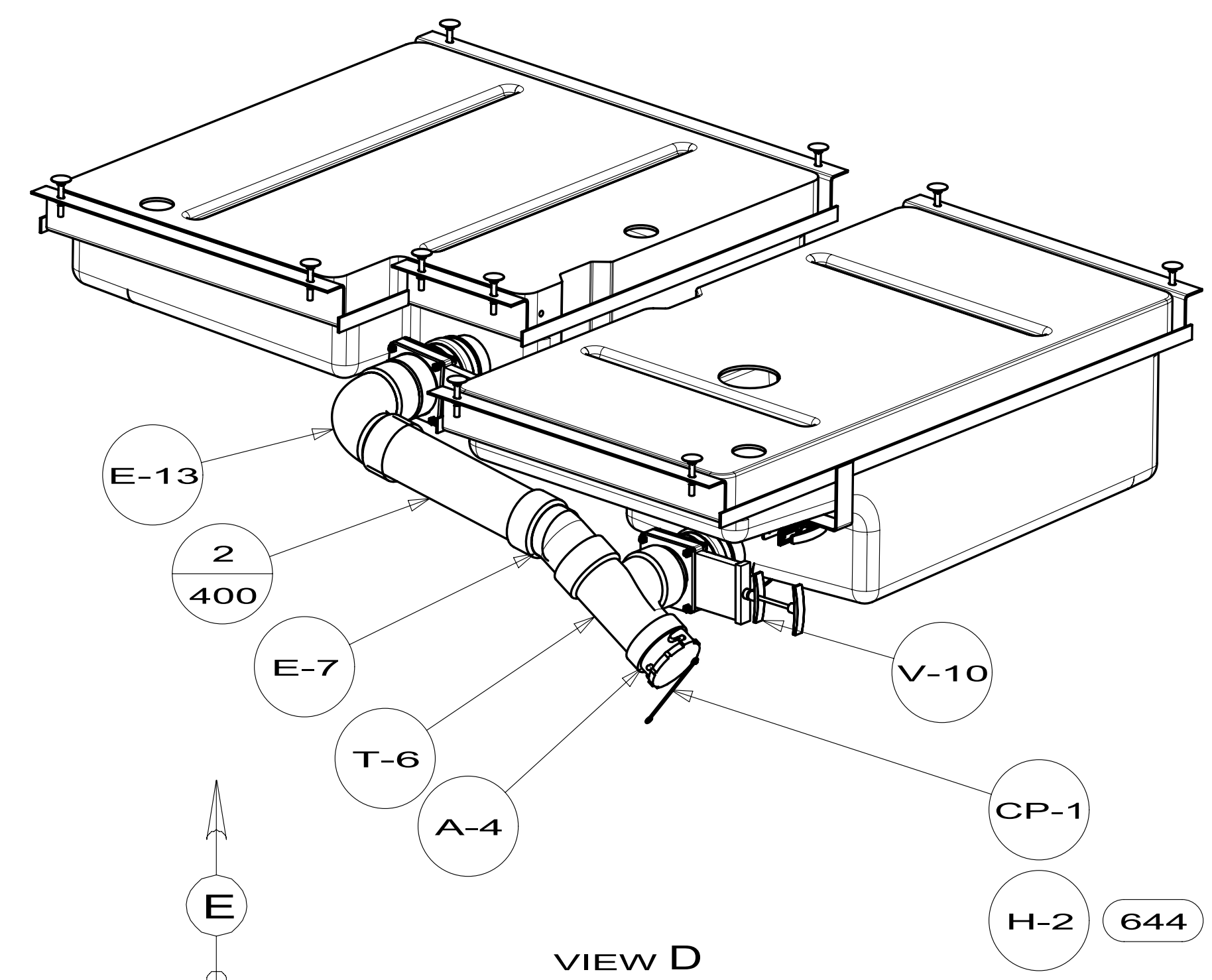
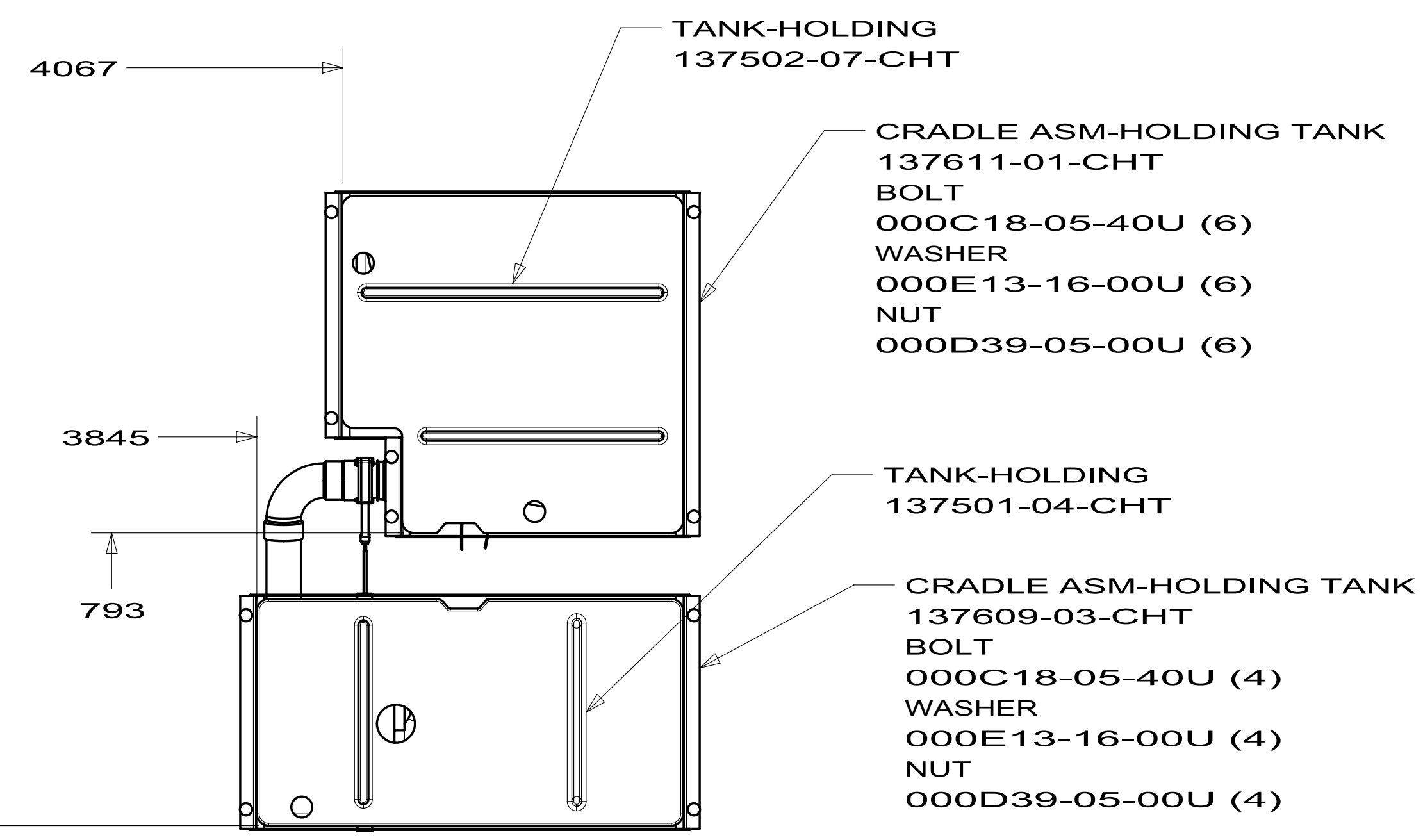
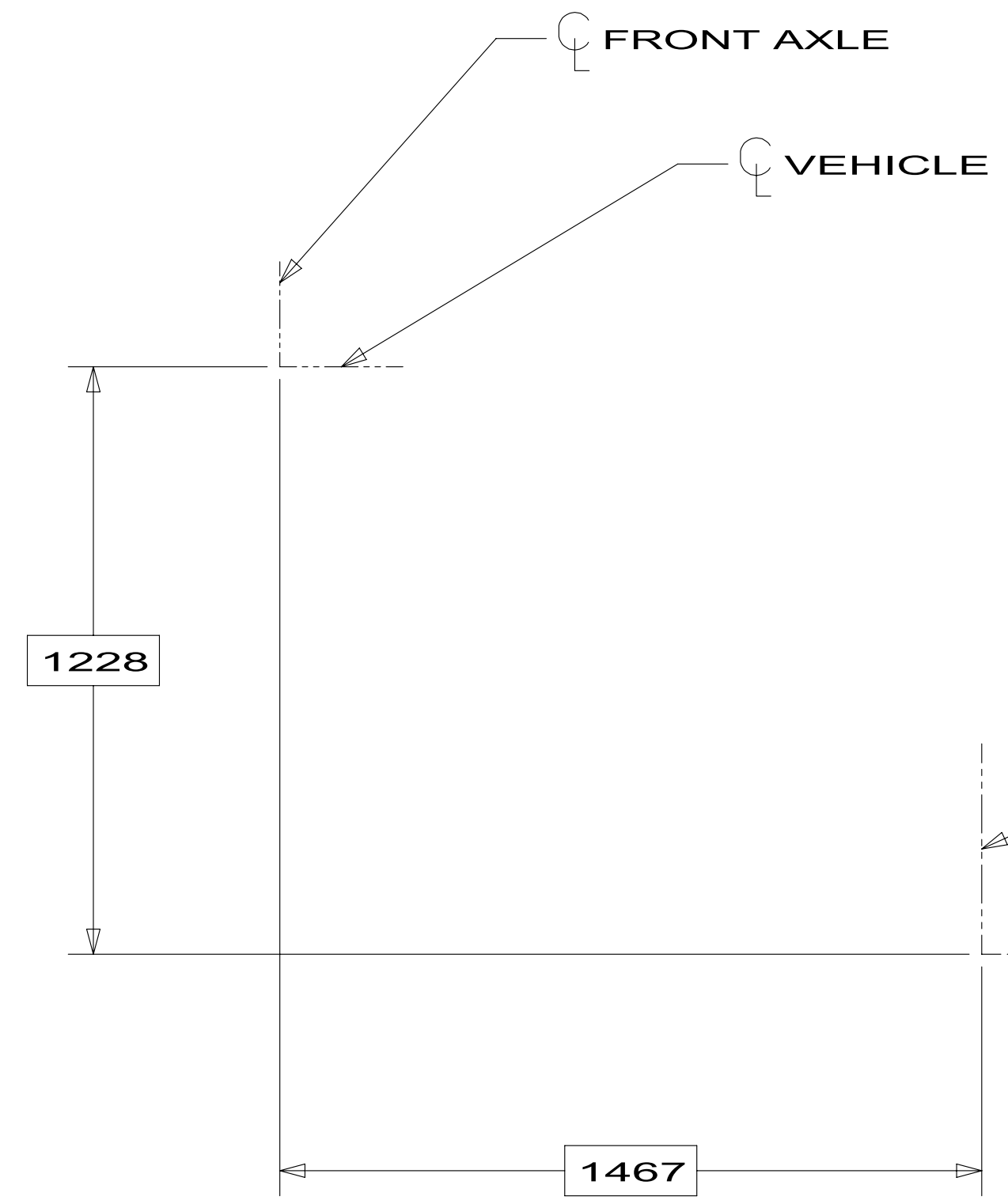
BRACKET
136878-01-CHT

BRACKET
136878-01-CHT

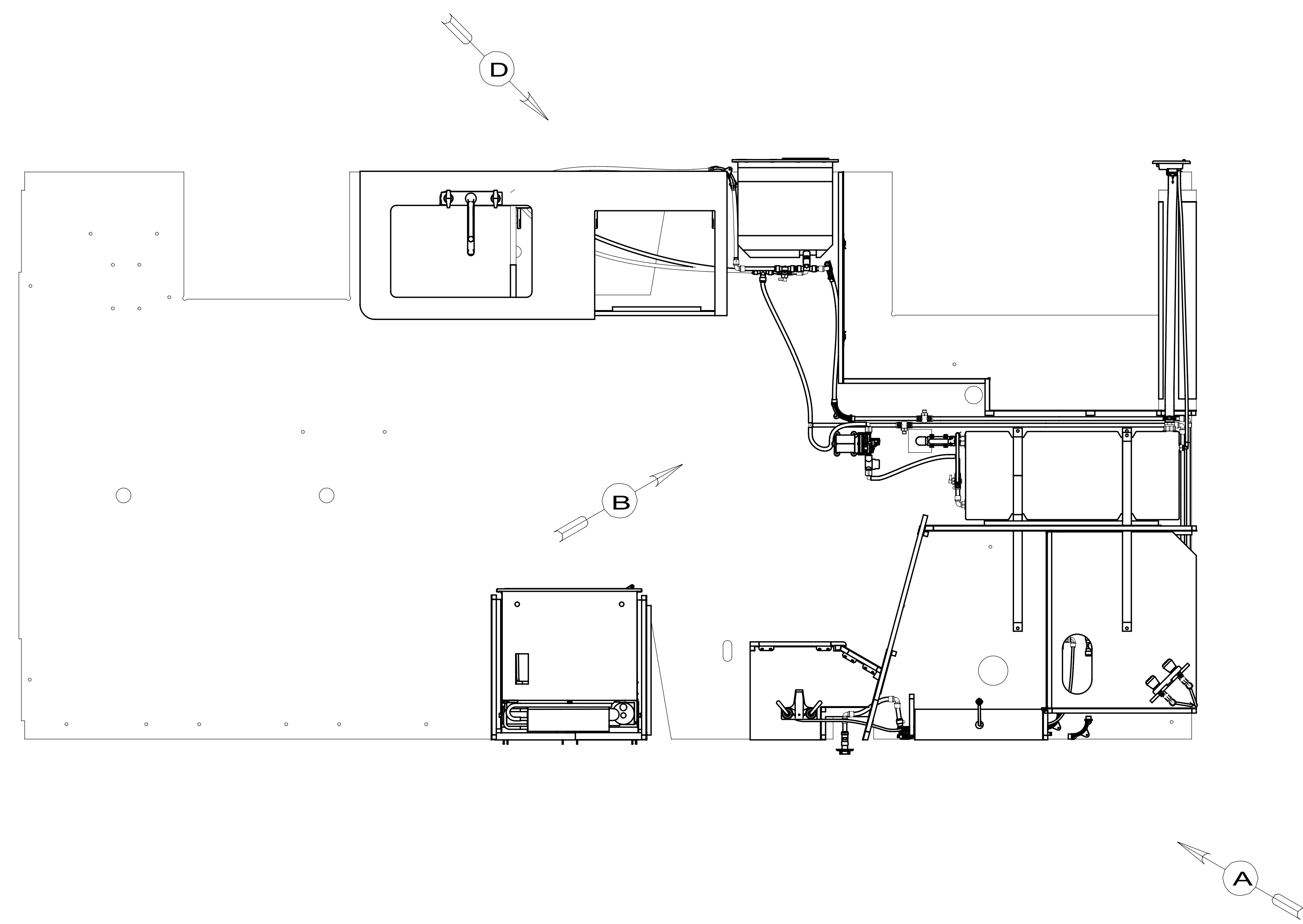
SCREW
087721-01-000 (8)

DETAIL C
(SHOWN W/OUT SHOWER, FLOOR, AND CABINETS)

FIRST USED	12 224V
DO NOT SCALE DRAWING	
TITLE: DRAINAGE SYSTEM INSTL	
SHEET 2	PART NO 179698 REV



FIRST USED	12 224V	
TITLE:	DO NOT SCALE DRAWING	
SHEET	3	PART NO 179698
REV		

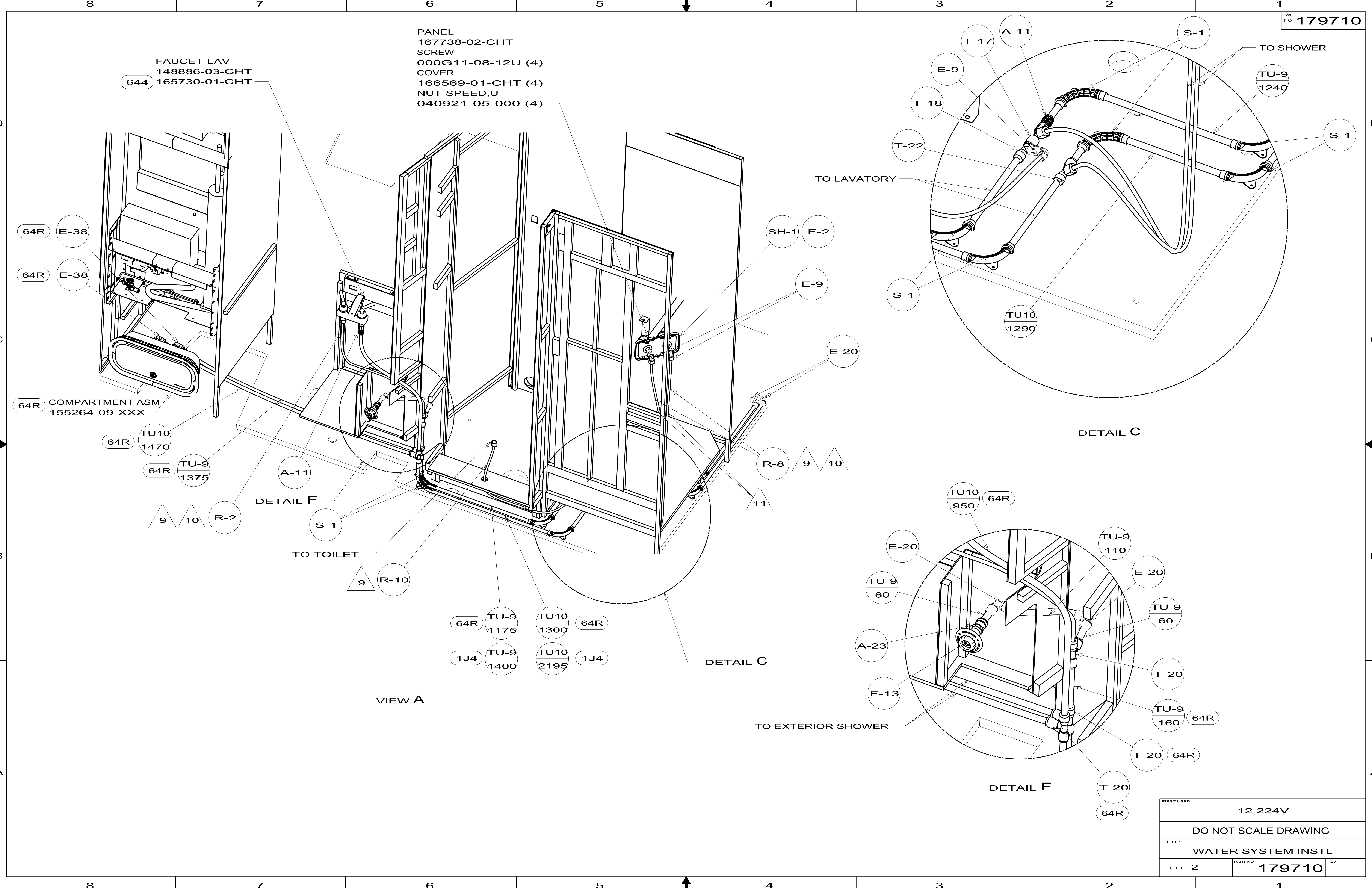


- 11. ADD PIPE WRAP (LADDER SCRAP) INSULATION HERE OR USE CARPET PAD (SCRAP) 075233-06-000.
- 10. LABEL THE HOT AND COLD SUPPLY TUBES.
- 9. TAPE FITTING TO TUBE BEFORE CABINET SET TO PREVENT FITTING FROM MOVING.
- 8. ATTACH WASHER-PLASTIC 180671-10-CHT (116230 W-3) WITH TAPE-DOUBLE 123816-03-000 ON BOTTOM SIDE OF FLOOR.
- 7. ATTACH WASHER-PLASTIC 180671-11-CHT (116230 W-2) WITH TAPE-DOUBLE 123816-03-000 ON BOTTOM SIDE OF COMPARTMENT.
- 6. ADD TEFLON TAPE 010405-03-000.
- 5. ADD TEFLON TAPE 010405-02-000.
- 4. ADD TEFLON TAPE 010405-01-000.
- 3. ALL TUBING TO BE SECURED AT 1200 INTERVALS MAXIMUM WITH CLAMP 010495-01-000 AND SCREW 000G67-10-12B OR EQUIVALENT.
- 2. TUBING TO BE INSTALLED WITH SUFFICIENT SLOPE TO PROVIDE DRAINAGE TO NEAREST VALVE OR TANK.
- 1. PLASTIC FITTINGS TO BE SEALED WITH SEALANT 084456-01-000.

- 644 GREAT ALASKAN RENTAL PACKAGE
- 53B WTR HTR-6GAL ELECTRIC/LP GAS
- 53F WATER HEATER-ELEC. IGNITION
- 53E WATER SYS WINTERIZATION PKG

		COPYRIGHT 2012 WINNEBAGO INDUSTRIES, INC.	
DTR	ORIG. DATE	ALL DIMENSIONS ARE IN MILLIMETERS	
CHKR			
P.E.			
M.E.	FIRST USED		
DSNR		12 224V	
UNSPECIFIED TOLERANCES ARE: WHOLE DIM (X) : 3 ONE-PLACE (X.X) : TWO-PLACE (X.XX) : ANGLE :		MATERIAL:	
THIRD ANGLE PROJECTION			
DO NOT SCALE DRAWING		REFER TO ES0018 FOR FASTENER TIGHTENING GUIDELINES	
TITLE: WATER SYSTEM INSTL			
SHEET 1 OF 4		PART NO	179710
REF:		1	

FOR
 WATER
 CALLOUTS
 SEE DWG NO
 116230-01-000



PANEL
167738-02-CHT
SCREW
000G11-08-12U (4)
COVER
166569-01-CHT (4)
NUT-SPEED,U
040921-05-000 (4)

FAUCET-LAV
148886-03-CHT
644 165730-01-CHT

64R E-38

64R E-38

64R COMPARTMENT ASM
155264-09-XXX

64R TU10
1470

64R TU-9
1375

9 10 R-2

A-11

S-1

TO TOILET

9 R-10

64R TU-9
1175

TU10
1300 64R

1J4 TU-9
1400

TU10
2195 1J4

VIEW A

SH-1 F-2

E-9

E-20

R-8 9 10

11

DETAIL C

S-1

T-22

T-18

E-9

T-17

A-11

TO LAVATORY

TO SHOWER

TU-9
1240

S-1

DETAIL C

TU10
950 64R

E-20

TU-9
80

A-23

F-13

TO EXTERIOR SHOWER

TU-9
110

E-20

TU-9
60

T-20

TU-9
160 64R

T-20 64R

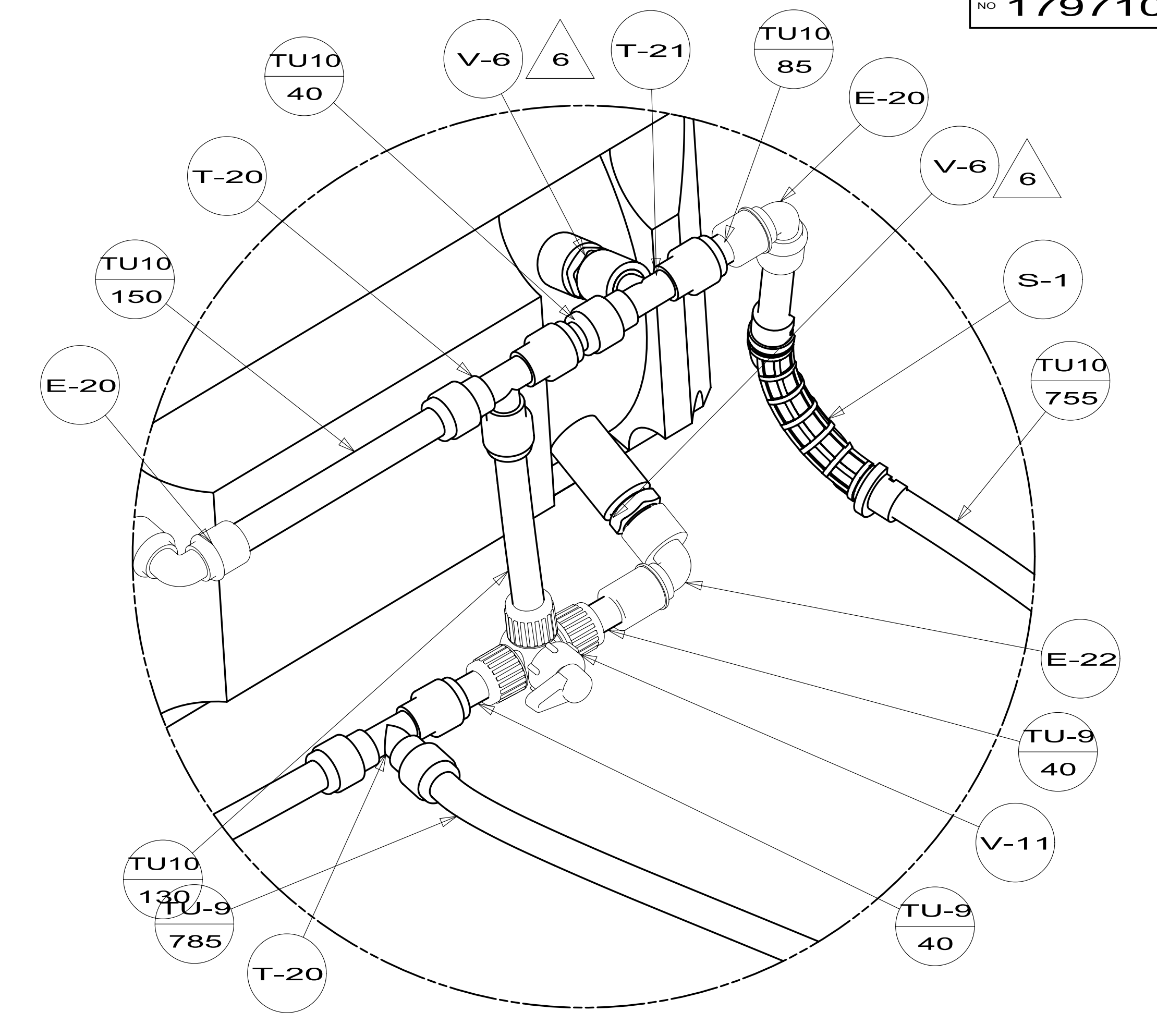
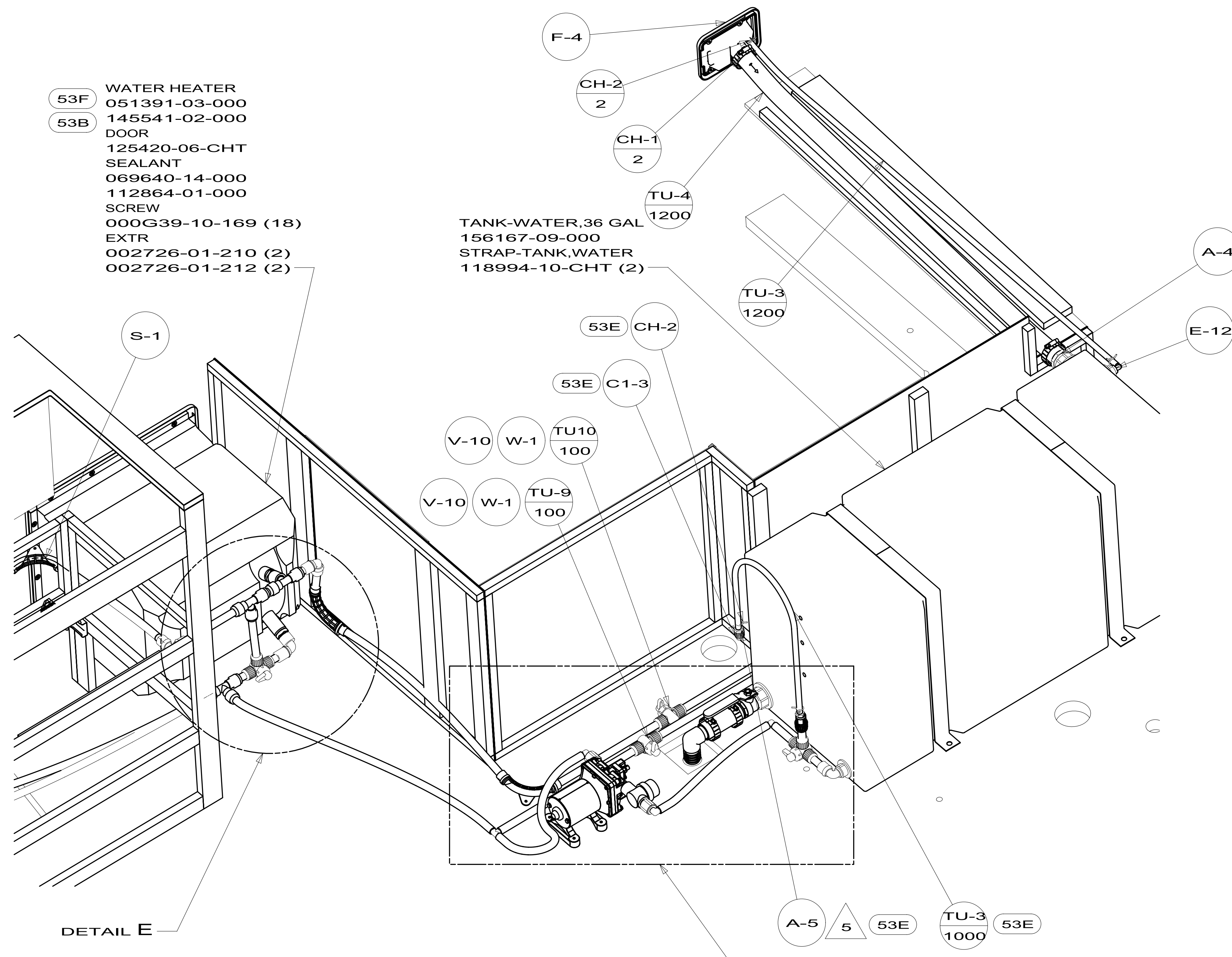
T-20
64R

DETAIL F

FIRST USED	12 224V
TITLE:	DO NOT SCALE DRAWING
	WATER SYSTEM INSTL
SHEET 2	PART NO 179710 REV

- 53F WATER HEATER
051391-03-000
- 53B DOOR
145541-02-000
- 125420-06-CHT SEALANT
- 069640-14-000
- 112864-01-000
- SCREW
- 000G39-10-169 (18)
- EXTR
- 002726-01-210 (2)
- 002726-01-212 (2)

- TANK-WATER,36 GAL
156167-09-000
- STRAP-TANK,WATER
118994-10-CHT (2)



DETAIL E

VIEW B

DETAIL G

FIRST USED	12 224V	
DO NOT SCALE DRAWING		
TITLE: WATER SYSTEM INSTL		
SHEET 3	PART NO 179710	REV

ELBOW
132781-01-000
TUBE
074462-01-000
(100)

VALVE-BALL
132483-01-000

TO WATER HEATER
AND GALLEY FAUCET

DETAIL G

FAUCET-GALLEY
140117-03-CHT

FAUCET-GALLEY
149164-01-CHT

VIEW D

VIEW D

FIRST USED	12 224V
DO NOT SCALE DRAWING	
TITLE: WATER SYSTEM INSTL	
SHEET 4	PART NO 179710