



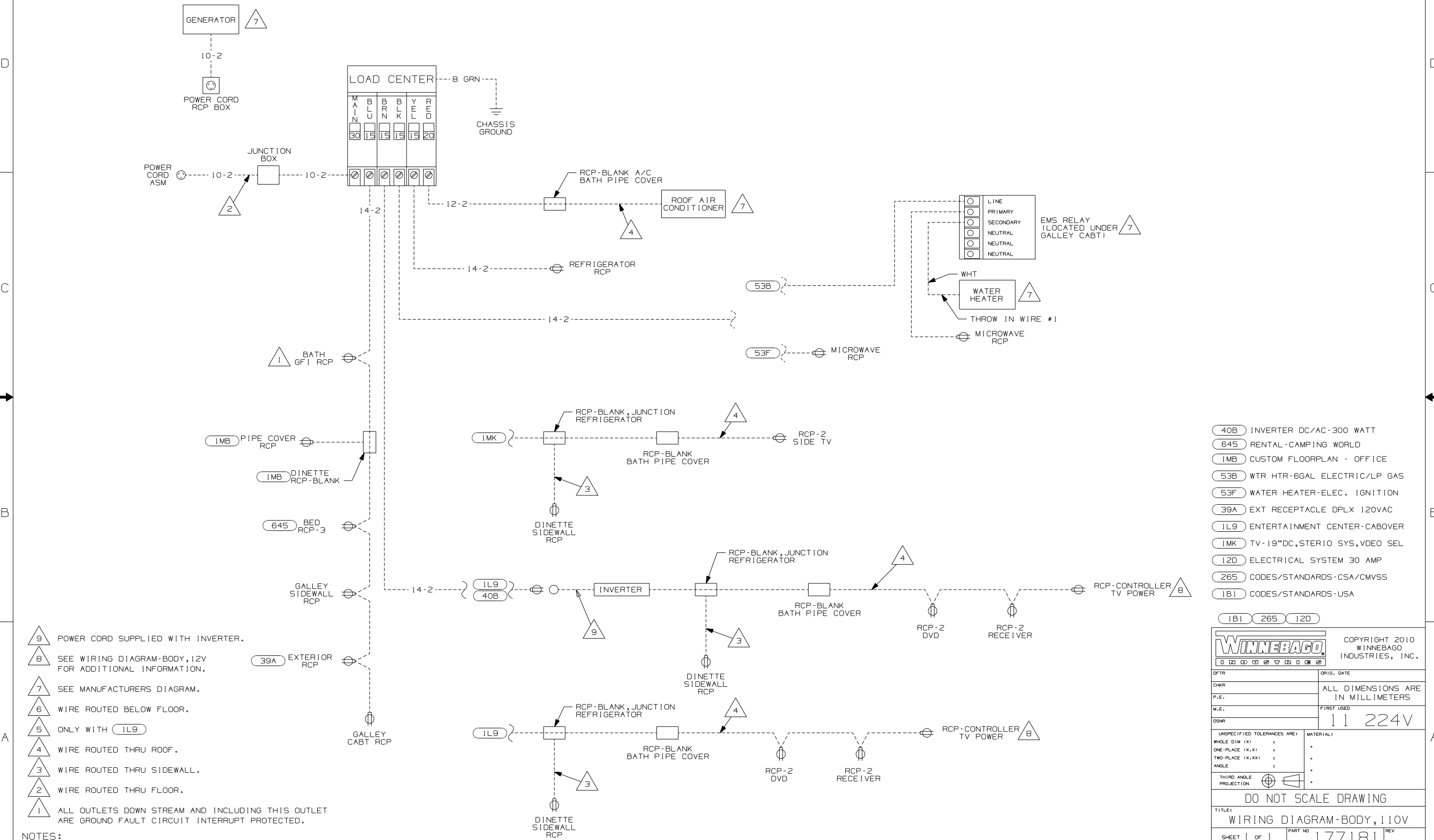
DANGER

Danger of electrical shock, burns or death. Always remove all power sources before attempting any repair, service or diagnostic work. Power can be present from shore power, generator, inverter or battery. All power sources must be disabled and secured before performing any service.



CAUTION

If you lack the skills, tools or equipment to perform diagnostic or repair work leave such work to an authorized Winnebago Industries dealer or other qualified shop.



- 40B INVERTER DC/AC-300 WATT
- 645 RENTAL-CAMPING WORLD
- 1MB CUSTOM FLOORPLAN - OFFICE
- 53B WTR HTR-6GAL ELECTRIC/LP GAS
- 53F WATER HEATER-ELEC. IGNITION
- 39A EXT RECEPTACLE DPLX 120VAC
- 1L9 ENTERTAINMENT CENTER-CABOVER
- 1MK TV-19"DC,STERIO SYS,VDEO SEL
- 12D ELECTRICAL SYSTEM 30 AMP
- 265 CODES/STANDARDS-CSA/CMVSS
- 1B1 CODES/STANDARDS-USA

Winnebago		COPYRIGHT 2010 WINNEBAGO INDUSTRIES, INC.	
DFTR	ORIG. DATE		
CHKR	ALL DIMENSIONS ARE IN MILLIMETERS		
P.E.			
M.E.	FIRST USED		
DSNR	11 224V		
UNSPECIFIED TOLERANCES ARE:		MATERIAL:	
WHOLE DIM (X.X)		:	
ONE-PLACE (X.X.X)		:	
TWO-PLACE (X.X.XX)		:	
ANGLE		:	
THIRD ANGLE PROJECTION		:	
DO NOT SCALE DRAWING			
TITLE: WIRING DIAGRAM-BODY, 110V			
SHEET 1 OF 1		PART NO 177181 REV	
REF:		1 6/8/2010	