



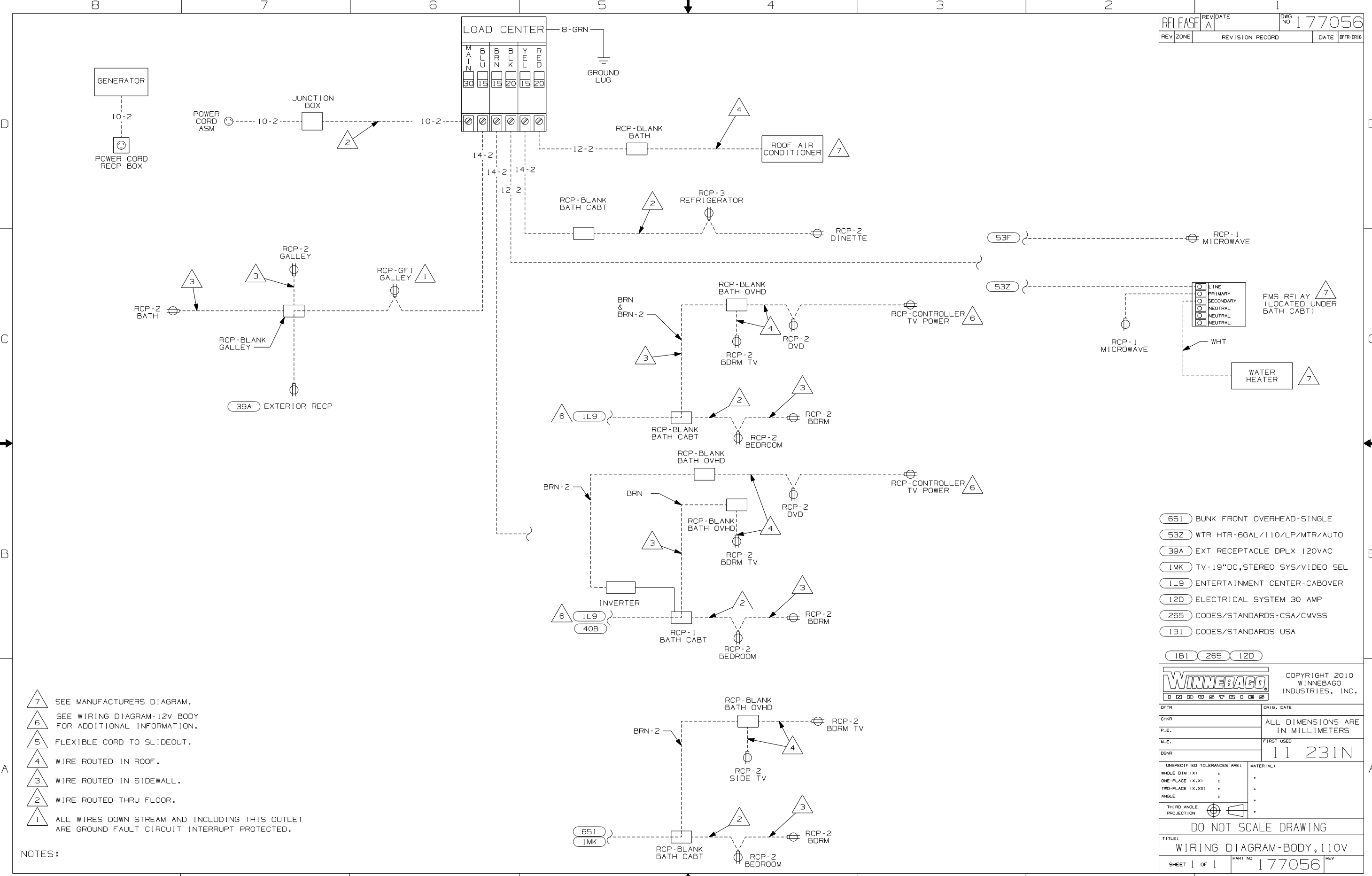
DANGER

Danger of electrical shock, burns or death. Always remove all power sources before attempting any repair, service or diagnostic work. Power can be present from shore power, generator, inverter or battery. All power sources must be disabled and secured before performing any service.



CAUTION

If you lack the skills, tools or equipment to perform diagnostic or repair work leave such work to an authorized Winnebago Industries dealer or other qualified shop.



- 7 SEE MANUFACTURERS DIAGRAM.
- 6 SEE WIRING DIAGRAM-12V BODY FOR ADDITIONAL INFORMATION.
- 5 FLEXIBLE CORD TO SLIDEOUT.
- 4 WIRE ROUTED IN ROOF.
- 3 WIRE ROUTED IN SIDEWALL.
- 2 WIRE ROUTED THRU FLOOR.
- 1 ALL WIRES DOWN STREAM AND INCLUDING THIS OUTLET ARE GROUND FAULT CIRCUIT INTERRUPT PROTECTED.

NOTES:

- 651 BUNK FRONT OVERHEAD-SINGLE
- 53Z WTR HTR-6GAL/110/LP/MTR/AUTO
- 39A EXT RECEPTACLE DPLX 120VAC
- 1MK TV-19"DC,STEREO SYS/VIDEO SEL
- 1L9 ENTERTAINMENT CENTER-CABOVER
- 12D ELECTRICAL SYSTEM 30 AMP
- 265 CODES/STANDARDS-CSA/CMVSS
- 1B1 CODES/STANDARDS USA

WINNEBAGO		COPYRIGHT 2010 WINNEBAGO INDUSTRIES, INC.	
DFTR	ORIG. DATE	ALL DIMENSIONS ARE IN MILLIMETERS	
CHKR		FIRST USED 11 231N	
P.E.			
M.E.		UNSPECIFIED TOLERANCES ARE:	
DSNR		MATERIAL:	
THIRD ANGLE PROJECTION		WHOLE DIM (X) : * ONE-PLACE (X.X) : * TWO-PLACE (X.XX) : * ANGLE : *	
DO NOT SCALE DRAWING			
TITLE: WIRING DIAGRAM-BODY, 110V			
SHEET 1 of 1	PART NO	177056	REV
REF:		16/8/2010	