



**DANGER**

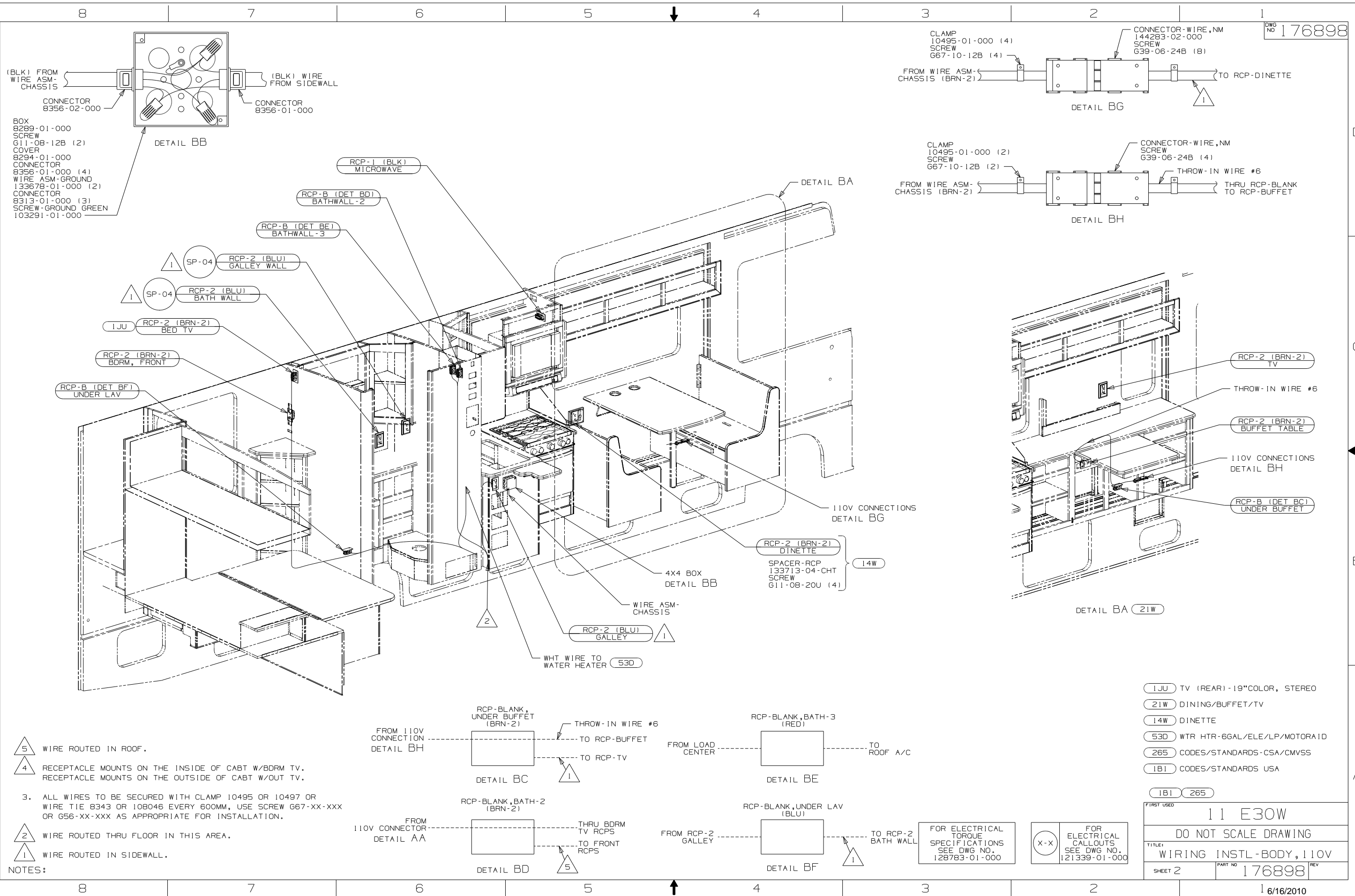
**Danger of electrical shock, burns or death.** Always remove all power sources before attempting any repair, service or diagnostic work. Power can be present from shore power, generator, inverter or battery. All power sources must be disabled and secured before performing any service.

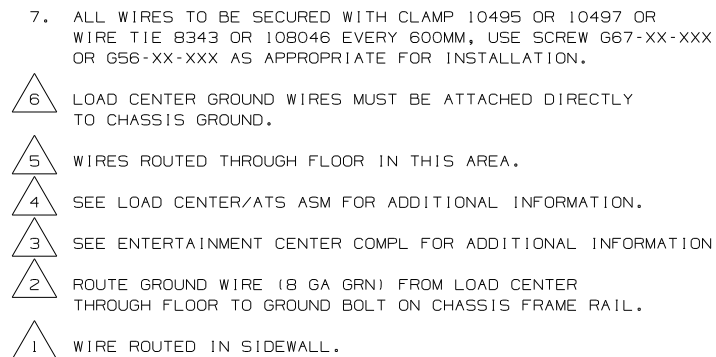


**CAUTION**

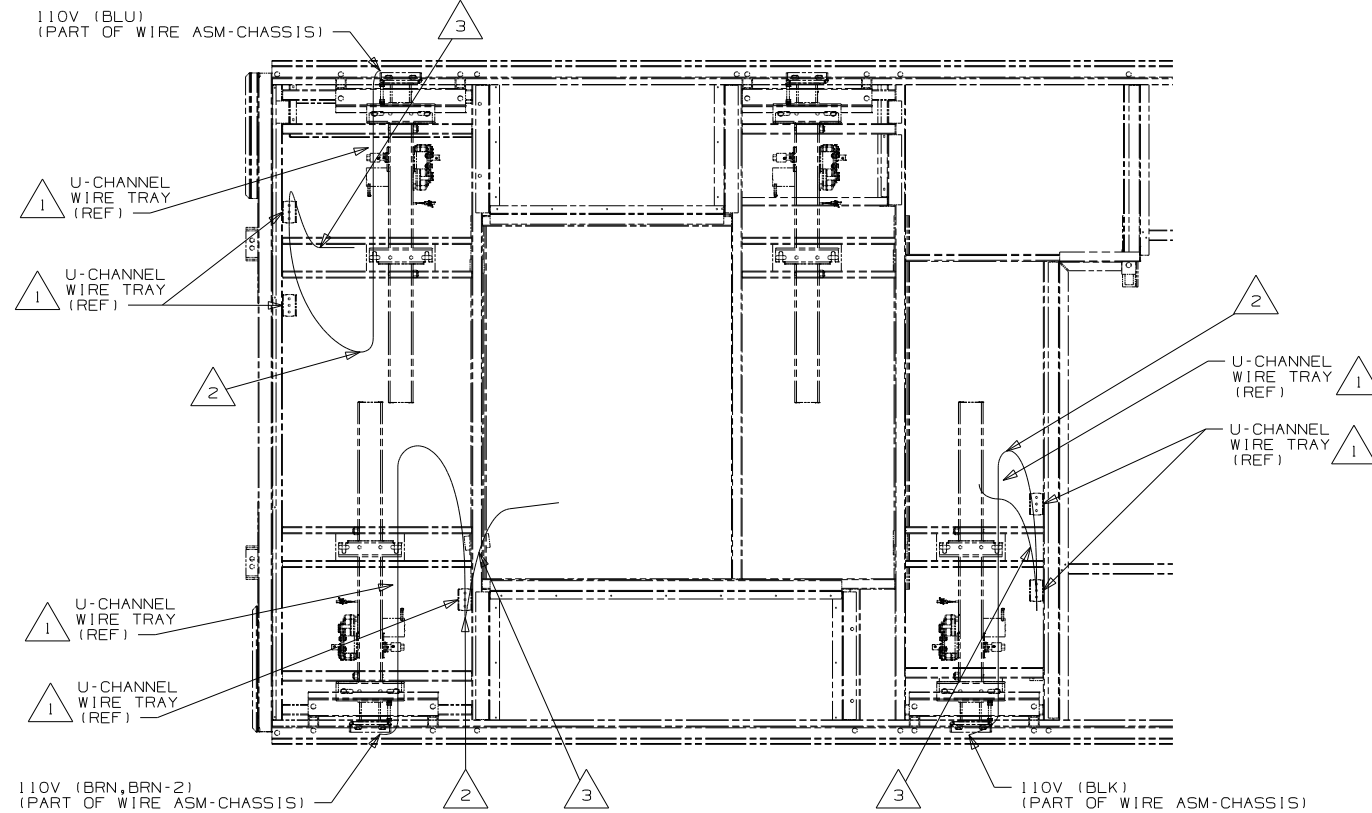
If you lack the skills, tools or equipment to perform diagnostic or repair work leave such work to an authorized Winnebago Industries dealer or other qualified shop.



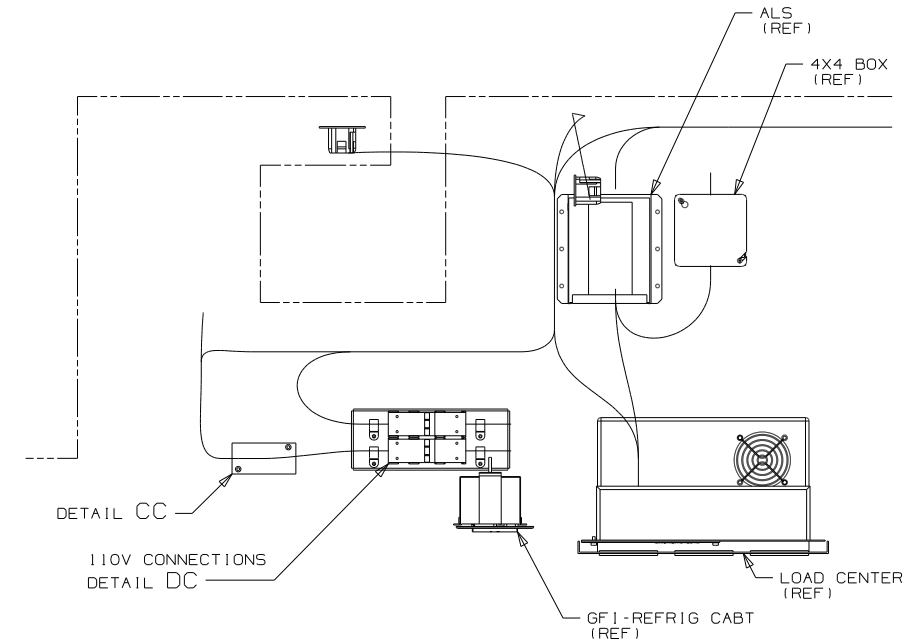




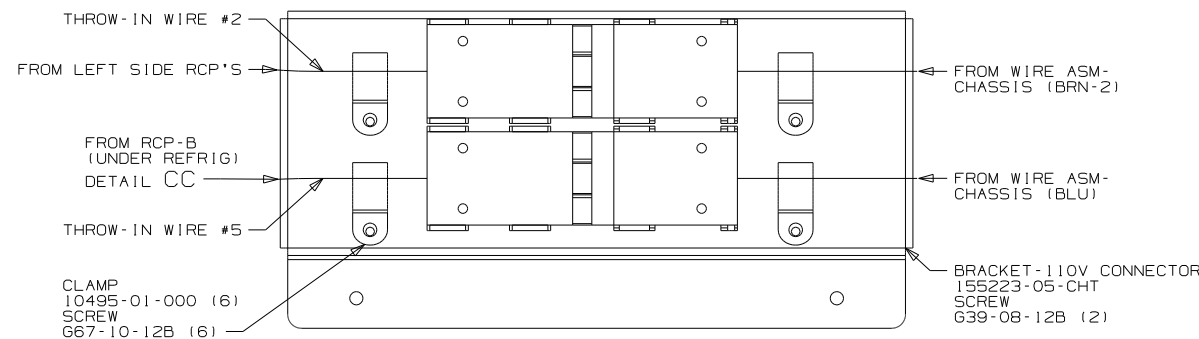
1 6/16/2010



VIEW DA



VIEW DB



DETAIL DC

- 3 CONVOLUTE TUBING STOPS HERE AND BRAIDED SLEEVING STARTS.
- 2 WITH SLIDEOUT ROOM IN, ALLOW 400 MM OF WIRE BETWEEN U-CHANNEL, WIRE SUPPORT AND SUPPORT ASM. WIRE FOR PROPER OPERATION.
- 1 USE WIRE TIE 8343-02-000 AND SECURE WIRE HARNESS TO WIRE TRAYS.

NOTES:

265 CODES/STANDARDS-CSA/CMVSS

1B1 CODES/STANDARDS USA

1B1 265

11 E30W	
DO NOT SCALE DRAWING	
TITLE: WIRING INSTL-BODY, 110V	
SHEET 4	PART NO 176898

FOR ELECTRICAL  
TORQUE  
SPECIFICATIONS  
SEE DWG NO.  
128783-01-000

FOR  
ELECTRICAL  
CALLOUTS  
SEE DWG NO.  
121339-01-000