



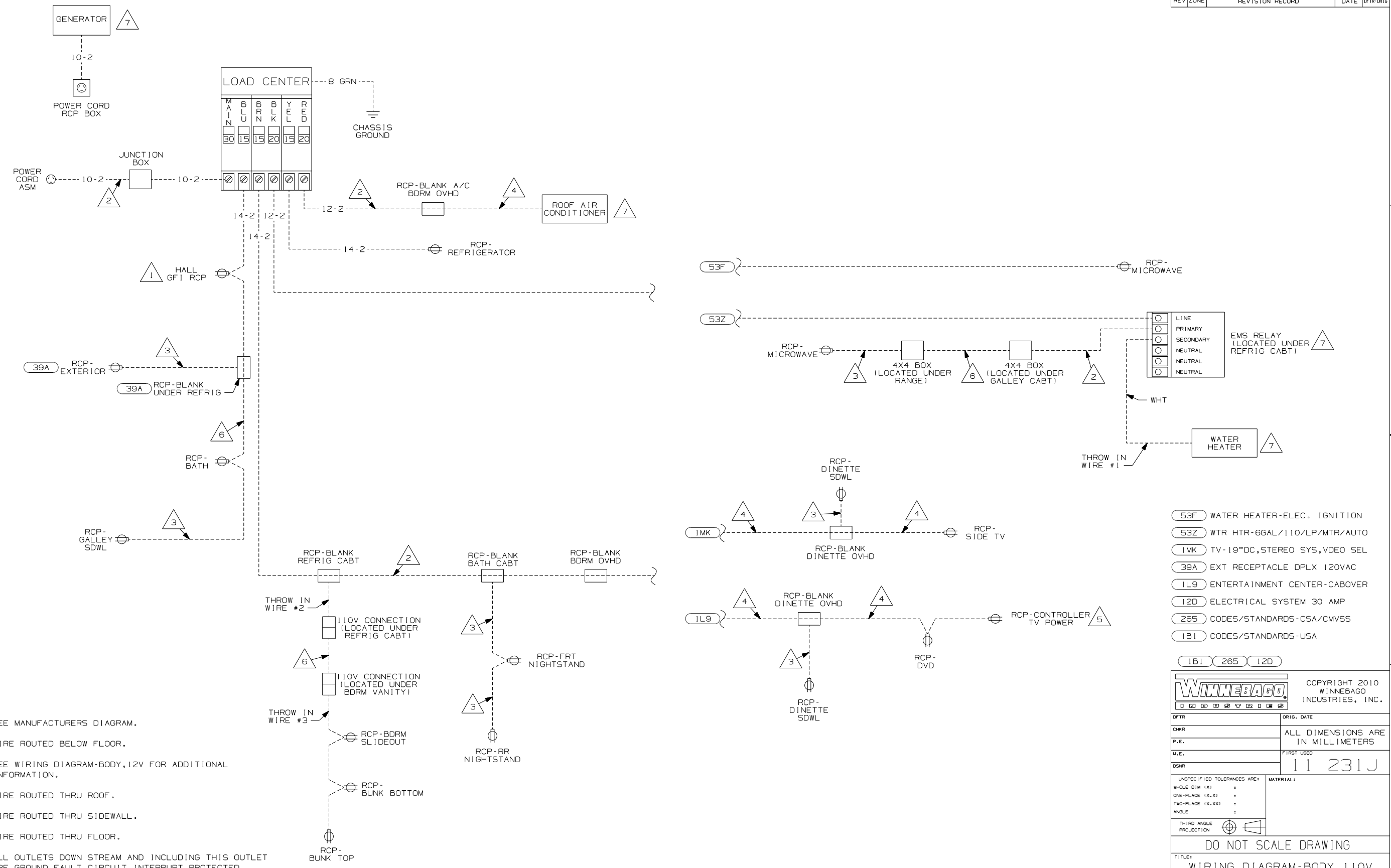
DANGER

Danger of electrical shock, burns or death. Always remove all power sources before attempting any repair, service or diagnostic work. Power can be present from shore power, generator, inverter or battery. All power sources must be disabled and secured before performing any service.



CAUTION

If you lack the skills, tools or equipment to perform diagnostic or repair work leave such work to an authorized Winnebago Industries dealer or other qualified shop.



- (53F) WATER HEATER-ELEC. IGNITION
- (53Z) WTR HTR-6GAL/110/LP/MTR/AUTO
- (1MK) TV-19"DC, STEREO SYS, VDEO SEL
- (39A) EXT RECEPTACLE DPLX 120VAC
- (1L9) ENTERTAINMENT CENTER-CABOVER
- (12D) ELECTRICAL SYSTEM 30 AMP
- (265) CODES/STANDARDS-CSA/CMVSS
- (1B1) CODES/STANDARDS-USA

- NOTES:
- (7) SEE MANUFACTURERS DIAGRAM.
 - (6) WIRE ROUTED BELOW FLOOR.
 - (5) SEE WIRING DIAGRAM-BODY, 12V FOR ADDITIONAL INFORMATION.
 - (4) WIRE ROUTED THRU ROOF.
 - (3) WIRE ROUTED THRU SIDEWALL.
 - (2) WIRE ROUTED THRU FLOOR.
 - (1) ALL OUTLETS DOWN STREAM AND INCLUDING THIS OUTLET ARE GROUND FAULT CIRCUIT INTERRUPT PROTECTED.

WINNEBAGO		COPYRIGHT 2010 WINNEBAGO INDUSTRIES, INC.	
DFTR	ORIG. DATE		
CHKR	ALL DIMENSIONS ARE IN MILLIMETERS		
P.E.			
M.E.	FIRST USED		
DSNR	11 231J		
UNSPECIFIED TOLERANCES ARE:		MATERIAL:	
WHOLE DIM (X)	:		
ONE-PLACE (X.X)	:		
TWO-PLACE (X.XX)	:		
ANGLE	:		
THIRD ANGLE PROJECTION			
DO NOT SCALE DRAWING			
TITLE: WIRING DIAGRAM-BODY, 110V			
SHEET 1 OF 1	PART NO	176658	REV
REF:		16/8/2010	