



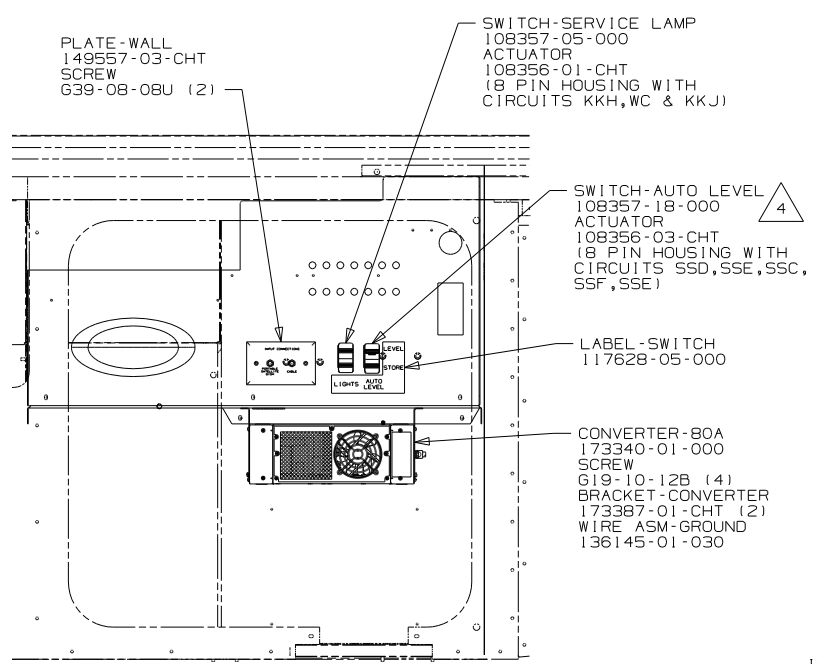
DANGER

Danger of electrical shock, burns or death. Always remove all power sources before attempting any repair, service or diagnostic work. Power can be present from shore power, generator, inverter or battery. All power sources must be disabled and secured before performing any service.

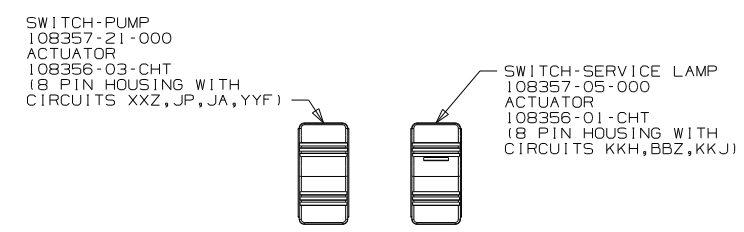


CAUTION

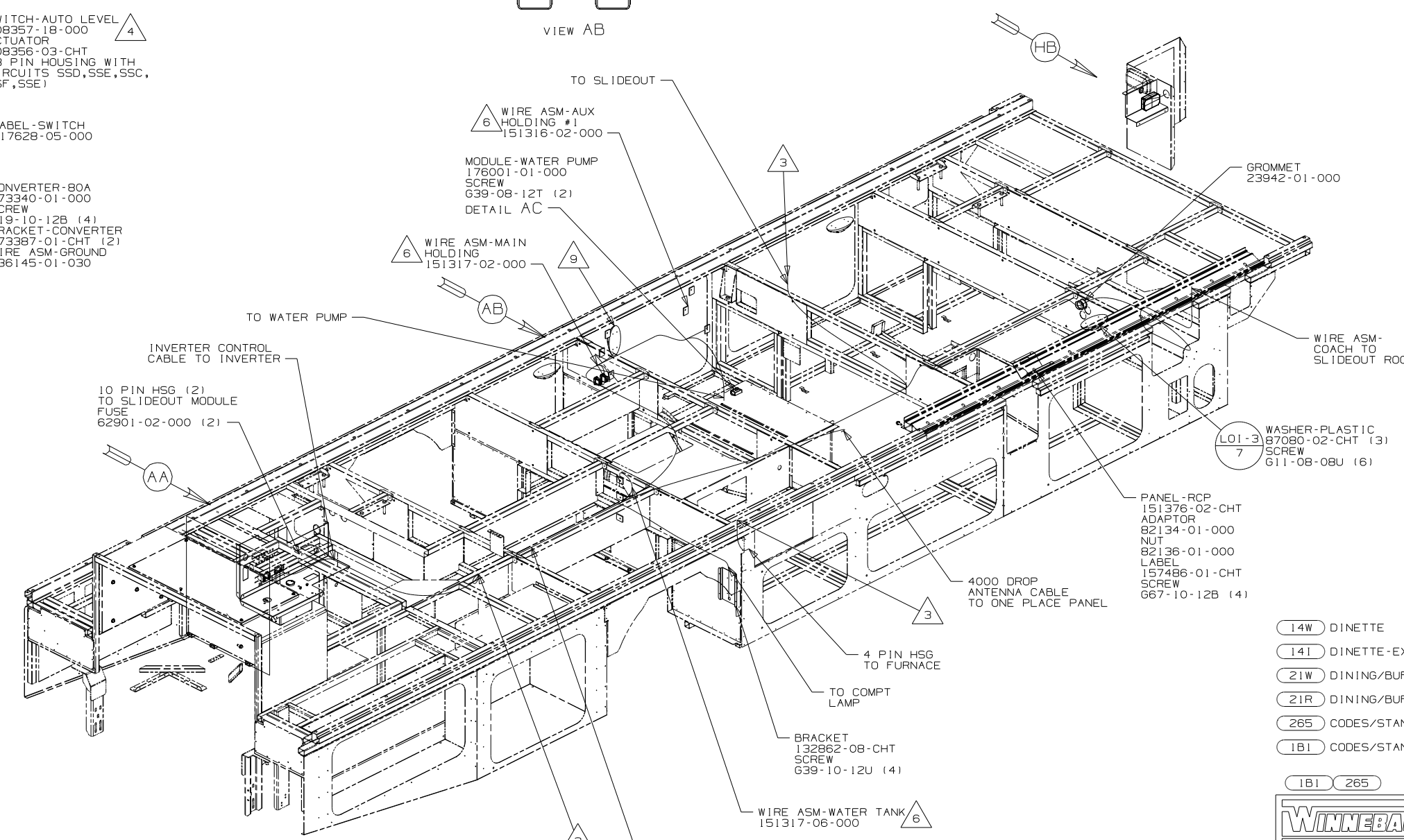
If you lack the skills, tools or equipment to perform diagnostic or repair work leave such work to an authorized Winnebago Industries dealer or other qualified shop.



VIEW AA



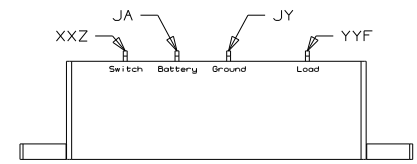
VIEW AB



- 9 LAMP LOCATED IN SERVICE COMPARTMENT.
- 8 LAMP LOCATED IN POWER CORD COMPARTMENT.
- 7 LOCATE CHANNEL-WIRE PATH, TOP BY INSERTING TAB INTO SLOTS IN CHANNEL-WIRE PATH, BOTTOM. SCREW CHANNEL-WIRE PATH, TOP TO RISER.
- 6 PLACE CROSS LOCATOR ON SENSORS OVER DIMPLES ON TANK.
- 5 FOR MORE INFORMATION SEE A/C INSTL.
- 4 SEE WIRE ASM-CHASSIS FOR ADDITIONAL INFORMATION.
- 3 WIRE PASSES UP THRU FLOOR IN THIS AREA.

2. ROUTE TANK SENSOR WIRES SO THEY DO NOT PASS OVER SENSORS. USE WIRE TIE MOUNT 155366-01-000 AND WIRE TIE 8343-01-000 AS NEEDED. TANK SURFACE MUST BE CLEANED USING ISOPROPYL ALCOHOL AND PRIMED WITH PRIMER 94.
1. ALL WIRES TO BE SECURED WITH CLAMP 10495 OR 10497 OR WIRE TIE 8343 OR 108046 EVERY 600MM, USE SCREW G67-XX-XXX OR G56-XX-XXX AS APPROPRIATE FOR INTALLATION.

NOTES:



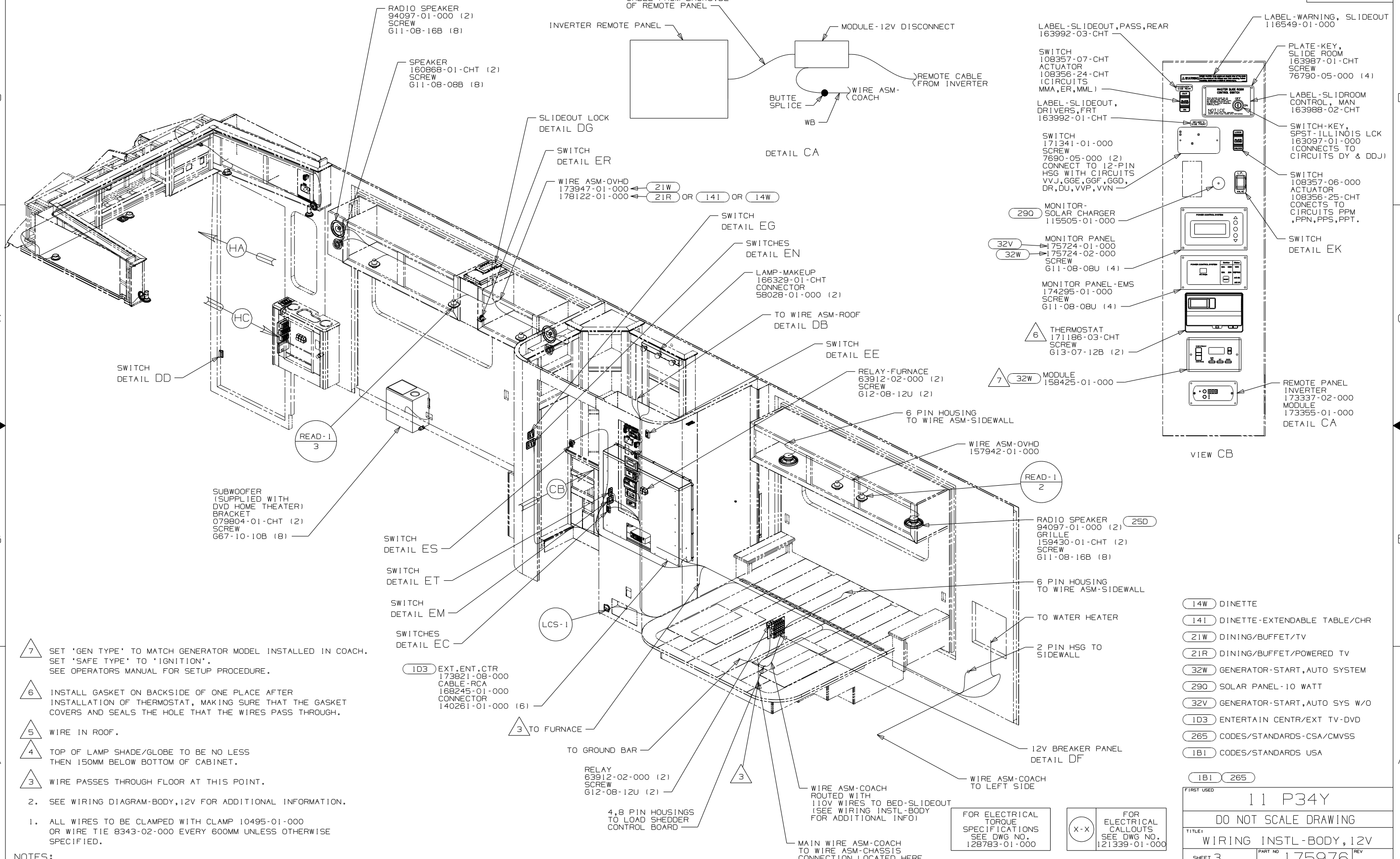
DETAIL AC

FOR ELECTRICAL TORQUE SPECIFICATIONS SEE DWG NO. 128783-01-000

FOR ELECTRICAL CALLOUTS SEE DWG NO. 121339-01-000

- 14W DINETTE
- 14I DINETTE-EXTENDABLE TABLE/CHR
- 21W DINING/BUFFET/TV
- 21R DINING/BUFFET/POWERED TV
- 265 CODES/STANDARDS-CSA/CMVSS
- 1B1 CODES/STANDARDS USA

WINNEBAGO		COPYRIGHT 2011 WINNEBAGO INDUSTRIES, INC.	
DFTR	ORIG. DATE	ALL DIMENSIONS ARE IN MILLIMETERS	
CHKR		FIRST USED	
P.E.		11 P34Y	
M.E.		UNSPECIFIED TOLERANCES ARE:	
DSNR		MATERIAL:	
		WHOLE DIM (X)	: 3
		ONE-PLACE (X.X)	: 1.5
		TWO-PLACE (X.XX)	: 0.50
		ANGLE	: 1°
		THIRD ANGLE PROJECTION	
DO NOT SCALE DRAWING			
TITLE: WIRING INSTL-BODY, 12V			
SHEET 1 OF 8	PART NO	175976	REV
REF:	1 1/12/2011		



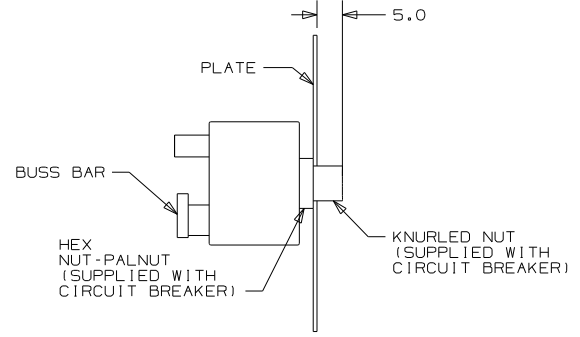
- NOTES:
1. ALL WIRES TO BE CLAMPED WITH CLAMP 10495-01-000 OR WIRE TIE 8343-02-000 EVERY 600MM UNLESS OTHERWISE SPECIFIED.
 2. SEE WIRING DIAGRAM-BODY,12V FOR ADDITIONAL INFORMATION.
 3. WIRE PASSES THROUGH FLOOR AT THIS POINT.
 4. TOP OF LAMP SHADE/GLOBE TO BE NO LESS THEN 150MM BELOW BOTTOM OF CABINET.
 5. WIRE IN ROOF.
 6. INSTALL GASKET ON BACKSIDE OF ONE PLACE AFTER INSTALLATION OF THERMOSTAT, MAKING SURE THAT THE GASKET COVERS AND SEALS THE HOLE THAT THE WIRES PASS THROUGH.
 7. SET 'GEN TYPE' TO MATCH GENERATOR MODEL INSTALLED IN COACH. SET 'SAFE TYPE' TO 'IGNITION'. SEE OPERATORS MANUAL FOR SETUP PROCEDURE.

FOR ELECTRICAL TORQUE SPECIFICATIONS SEE DWG NO. 128783-01-000

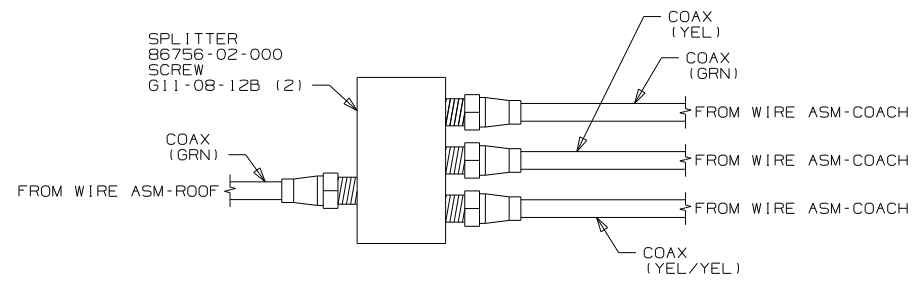
FOR ELECTRICAL CALLOUTS SEE DWG NO. 121339-01-000

- (14W) DINETTE
- (141) DINETTE-EXTENDABLE TABLE/CHR
- (21W) DINING/BUFFET/TV
- (21R) DINING/BUFFET/POWERED TV
- (32W) GENERATOR-START,AUTO SYSTEM
- (290) SOLAR PANEL-10 WATT
- (32V) GENERATOR-START,AUTO SYS W/O
- (1D3) ENTERTAIN CENTR/EXT TV-DVD
- (265) CODES/STANDARDS-CSA/CMVSS
- (1B1) CODES/STANDARDS USA

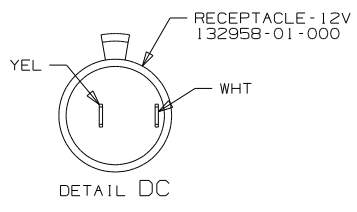
FIRST USED	
11 P34Y	
DO NOT SCALE DRAWING	
TITLE: WIRING INSTL-BODY,12V	
SHEET 3	PART NO 175976



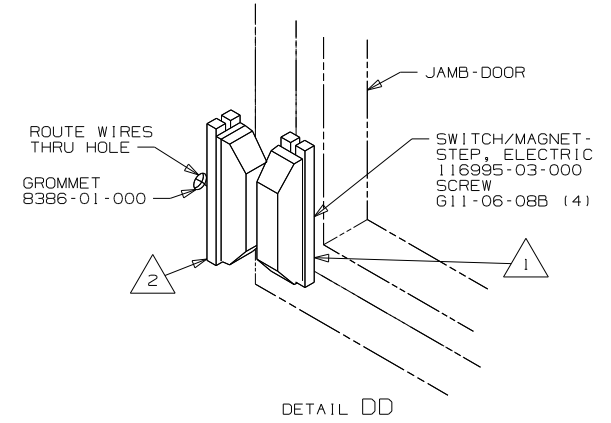
DETAIL DA-DA



DETAIL DB

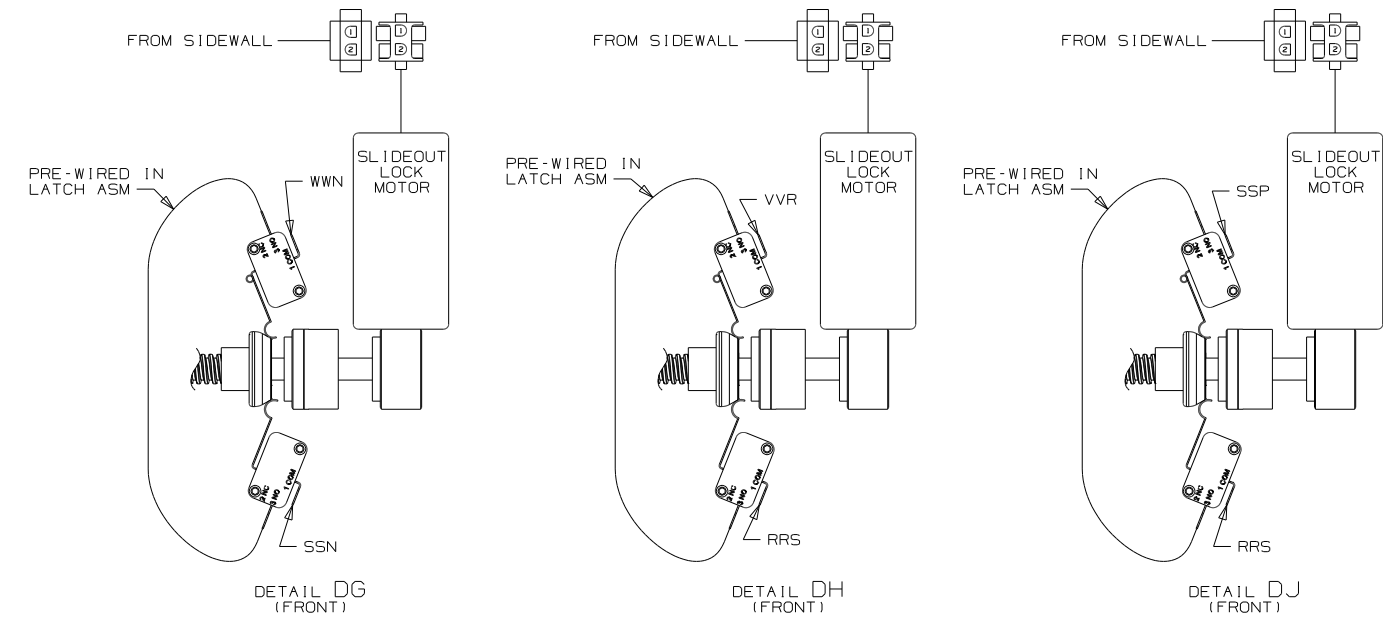


DETAIL DC



DETAIL DD

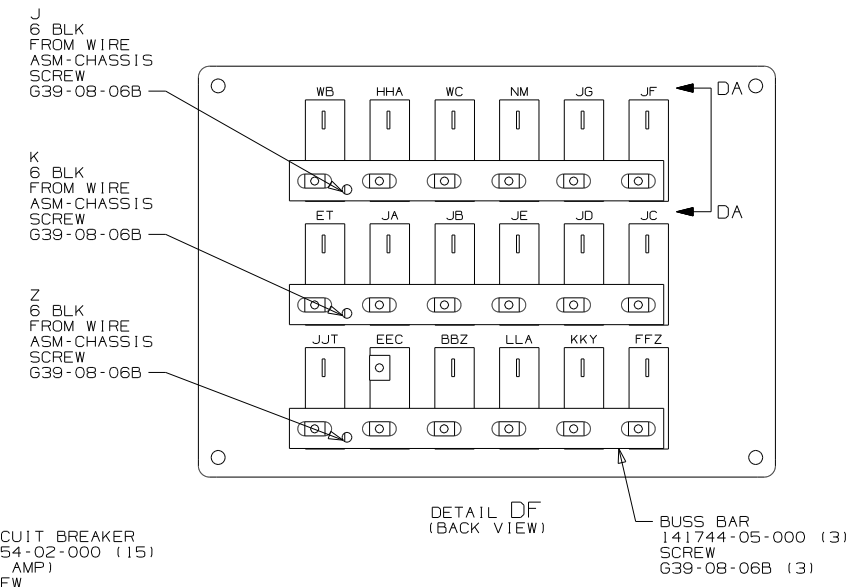
- NOTES:
- 4 WRAP BOTH ENDS WITH TAPE 8363-01-000 TO SECURE CONNECTION.
 - 3 FOR POSITIONING DIMENSIONS SEE WIRING INSTL-BODY, 110V.
 - 2 MOUNT SWITCH AND SPACER TO BLOCK ON JAMB ADJUST HEIGHT TO MATCH MAGNET.
 - 1 MOUNT MAGNET USING PILOT HOLES IN SCREEN DOOR FRAME. MOUNT WITH MAGNET TOWARD SWITCH.



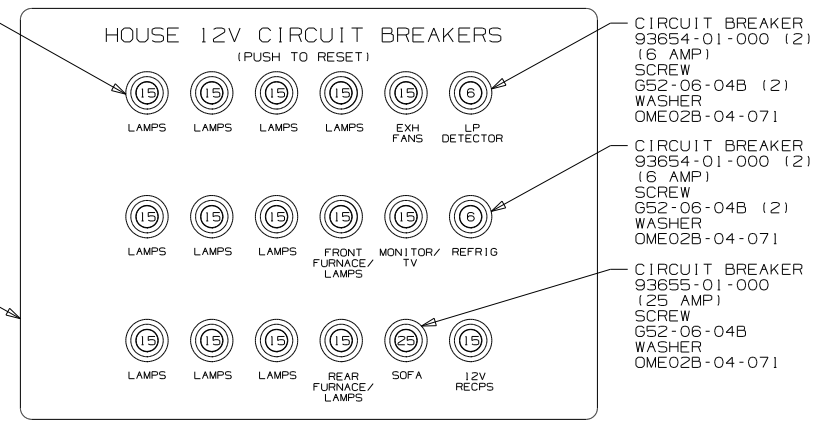
DETAIL DG (FRONT)

DETAIL DH (FRONT)

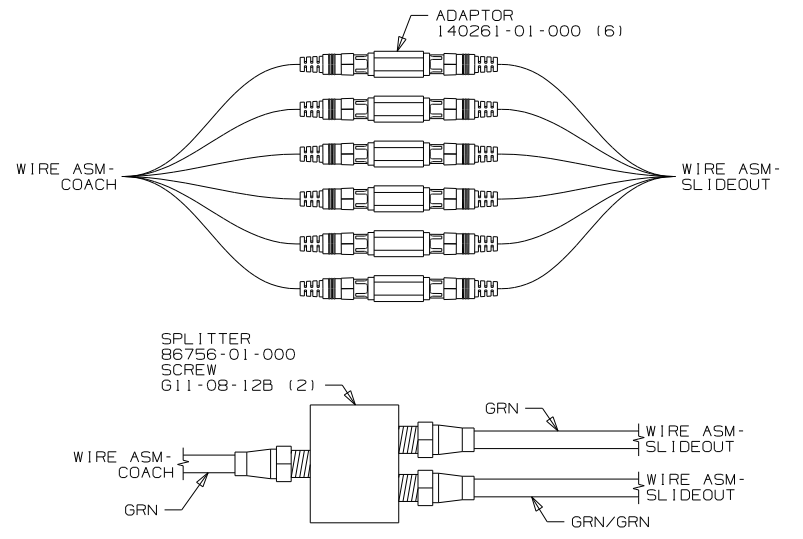
DETAIL DJ (FRONT)



DETAIL DF (BACK VIEW)



DETAIL DF (FRONT VIEW)



DETAIL DK

- 265 CODES/STANDARDS-CSA/CMVSS
- 1B1 CODES/STANDARDS USA

FOR ELECTRICAL TORQUE SPECIFICATIONS SEE DWG NO. 128783-01-000

X-X FOR ELECTRICAL CALLOUTS SEE DWG NO. 121339-01-000

FIRST USED	11 P34Y
TITLE	DO NOT SCALE DRAWING
	WIRING INSTL-BODY, 12V
SHEET 4	PART NO 175976 REV

42K SPEAKER-ROUND, CEILING
160867-01-CHT (3)

HAL-4
13

LSH-3

LOIN3
2

SPEAKER-ROUND, CEILING
160867-01-CHT (3) 21W OR 21R

HAL-2

- 21R DINING/BUFFET/POWERED TV
- 21W DINING/BUFFET/TV
- 42K TV-32" COLOR, STEREO W/REMOTE
- 265 CODES/STANDARDS-CSA/CMVSS
- 1B1 CODES/STANDARDS USA

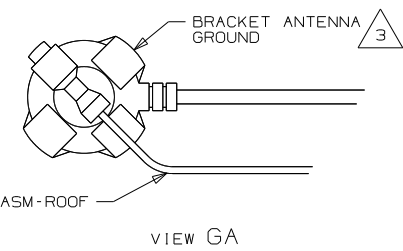
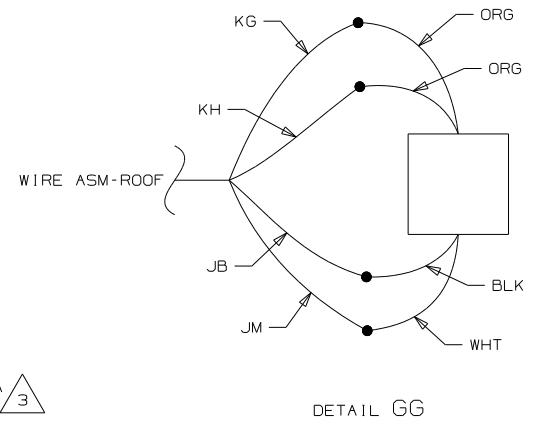
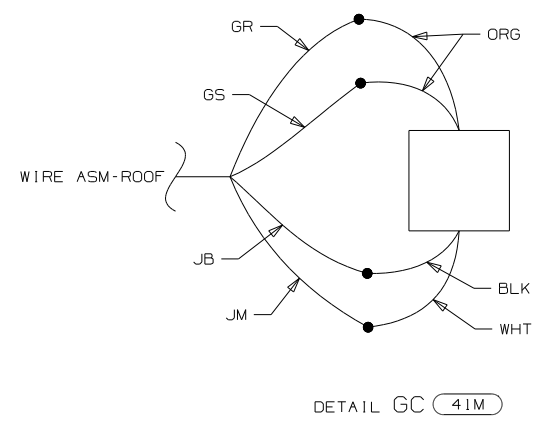
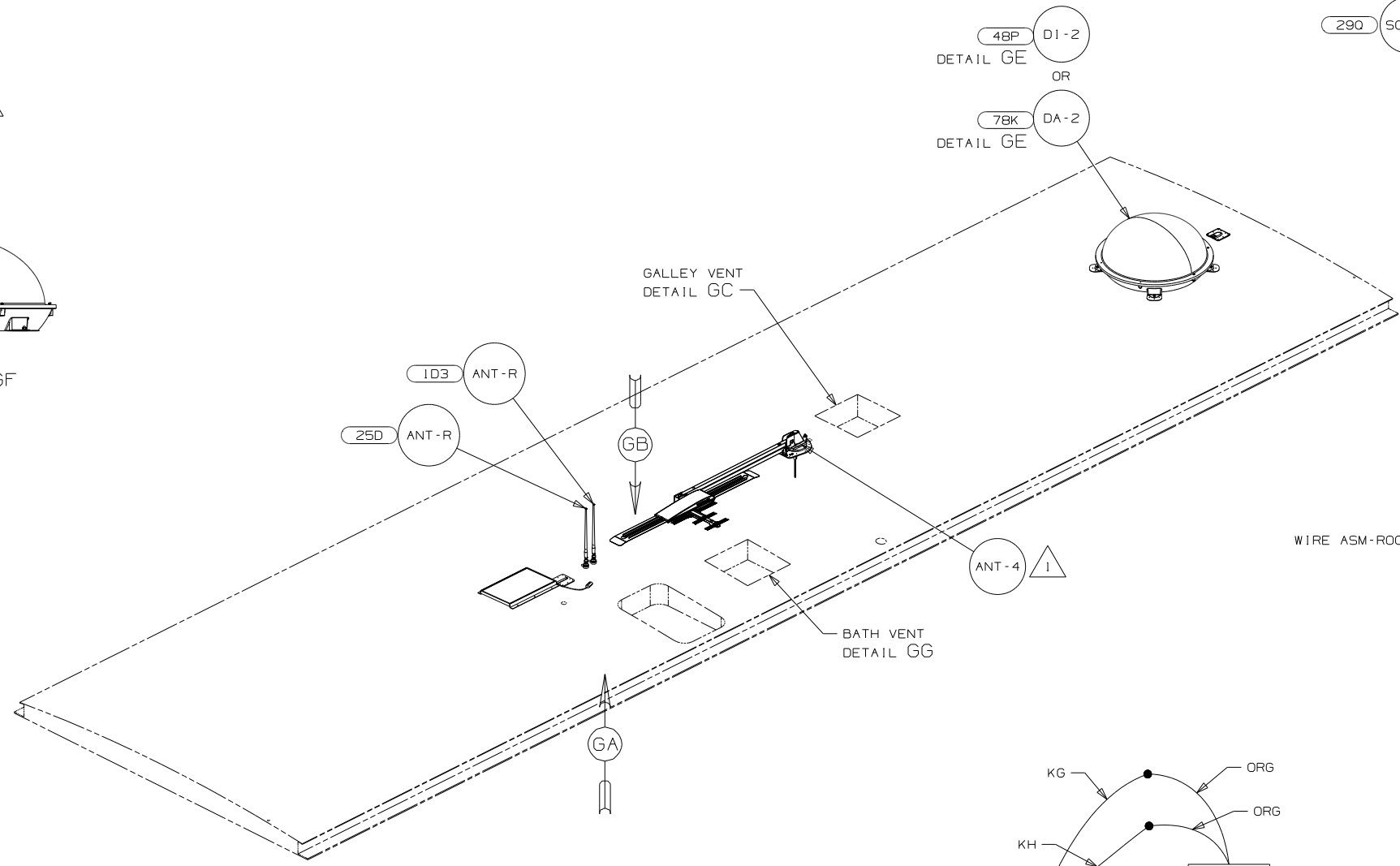
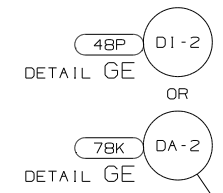
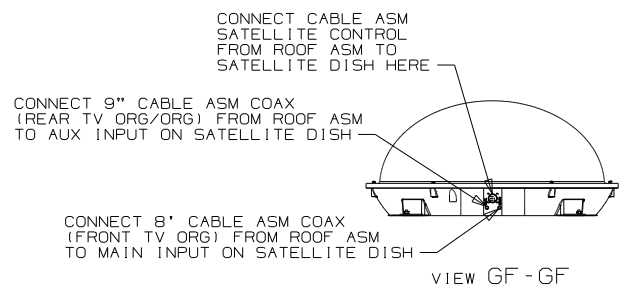
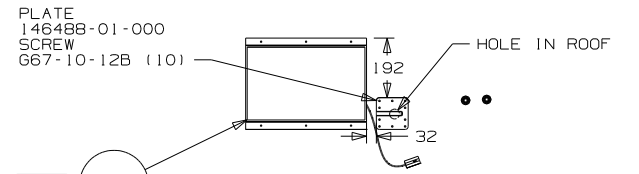
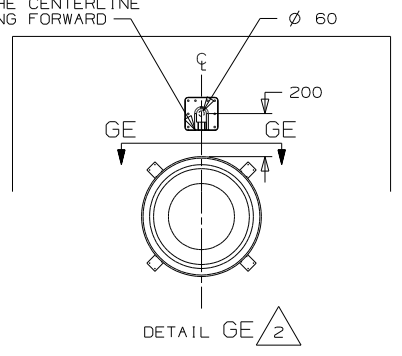
1B1 265

FOR ELECTRICAL
TORQUE
SPECIFICATIONS
SEE DWG NO.
128783-01-000

FOR ELECTRICAL
CALLOUTS
SEE DWG NO.
121339-01-000

FIRST USED	11 P34Y
TITLE:	DO NOT SCALE DRAWING
SHEET 6	WIRING INSTL-BODY, 12V
PART NO	175976
REV	

THE SATELLITE DISH WIRE CONNECTIONS ARE TO BE PLACED ON THE CENTERLINE OF THE MOTORHOME FACING FORWARD



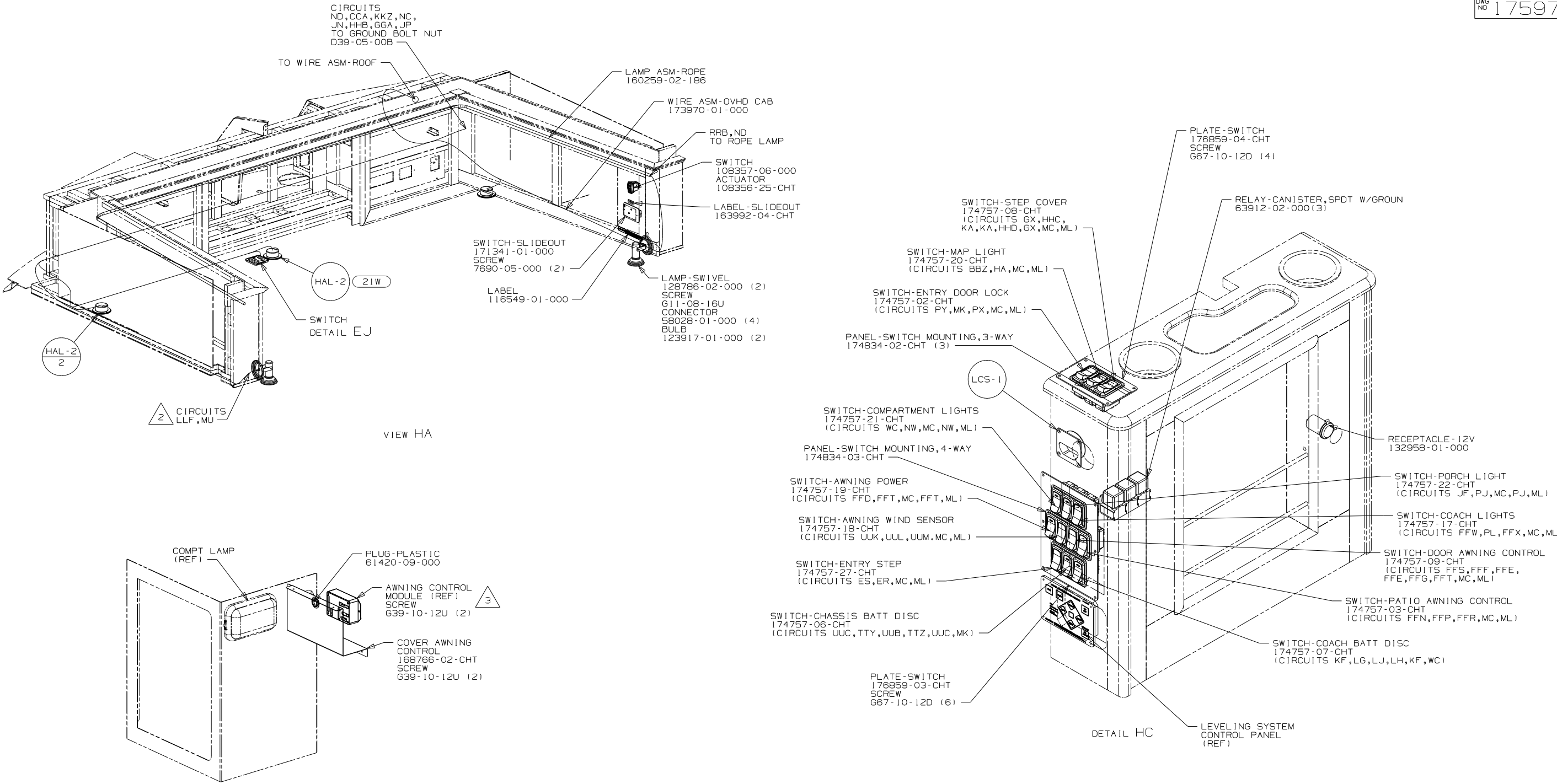
- NOTES:
- 5 SENSOR SUPPLIED WITH SATELLITE ASSEMBLY.
 - 4 FASTEN TO VENT.
 - 3 WRAP BRACKET LEGS AROUND ANTENNA BASE.
 - 2 REMOVE ALL SHIPPING RESTRAINTS AND FIRMLY INSERT THE SUPPLIED PLUGS INTO THE APPROPRIATE SIZED HOLES AS SPECIFIED IN THE INSTALLATION PROCESS.
 - 1 SEE ANTENNA INSTALLATION MANUAL FOR CORRECT INSTALLATION PROCEDURE.

- 48P SAT TV SYSTEM IN-MOTION
- 1D3 ENTERTAIN CENTR/EXT TV-DVD
- 41M VENT-POWER VENTILATOR
- 25D STEREO SYSTEM/W/CD/DVD REAR
- 78K SATELLITE DISH-AUTOMATIC
- 290 SOLAR PANEL-10 WATT
- 265 CODES/STANDARDS-CSA/CMVSS
- 1B1 CODES/STANDARDS USA

FOR ELECTRICAL TORQUE SPECIFICATIONS SEE DWG NO. 128783-01-000

FOR ELECTRICAL CALLOUTS SEE DWG NO. 121339-01-000

FIRST USED	11 P34Y	
TITLE:	DO NOT SCALE DRAWING	
	WIRING INSTL-BODY, 12V	
SHEET 7	PART NO	175976
	REV	



- NOTES:
- 4 INSTALL BRACKET SO THAT THE EDGE OF BRACKET IS LINED UP WITH EDGE OF CUTOUT IN FLOOR.
 - 3 SEE AWNING INSTL FOR ADDITIONAL INFORMATION.
 - 2 WIRES ARE PART OF WIRE ASM-IP, MAIN.
 - 1 SEE AWNING INSTL.FOR ADDITIONAL INFORMATION.

- 52N AWNING - PATIO, ELECTRIC
- 21W DINING/BUFFET/TV
- 265 CODES/STANDARDS-CSA/CMVSS
- 1B1 CODES/STANDARDS USA

FOR ELECTRICAL TORQUE SPECIFICATIONS SEE DWG NO. 128783-01-000

FOR ELECTRICAL CALLOUTS SEE DWG NO. 121339-01-000

FIRST USED	11 P34Y
TITLE:	DO NOT SCALE DRAWING
	WIRING INSTL-BODY, 12V
SHEET 8	PART NO 175976 REV