



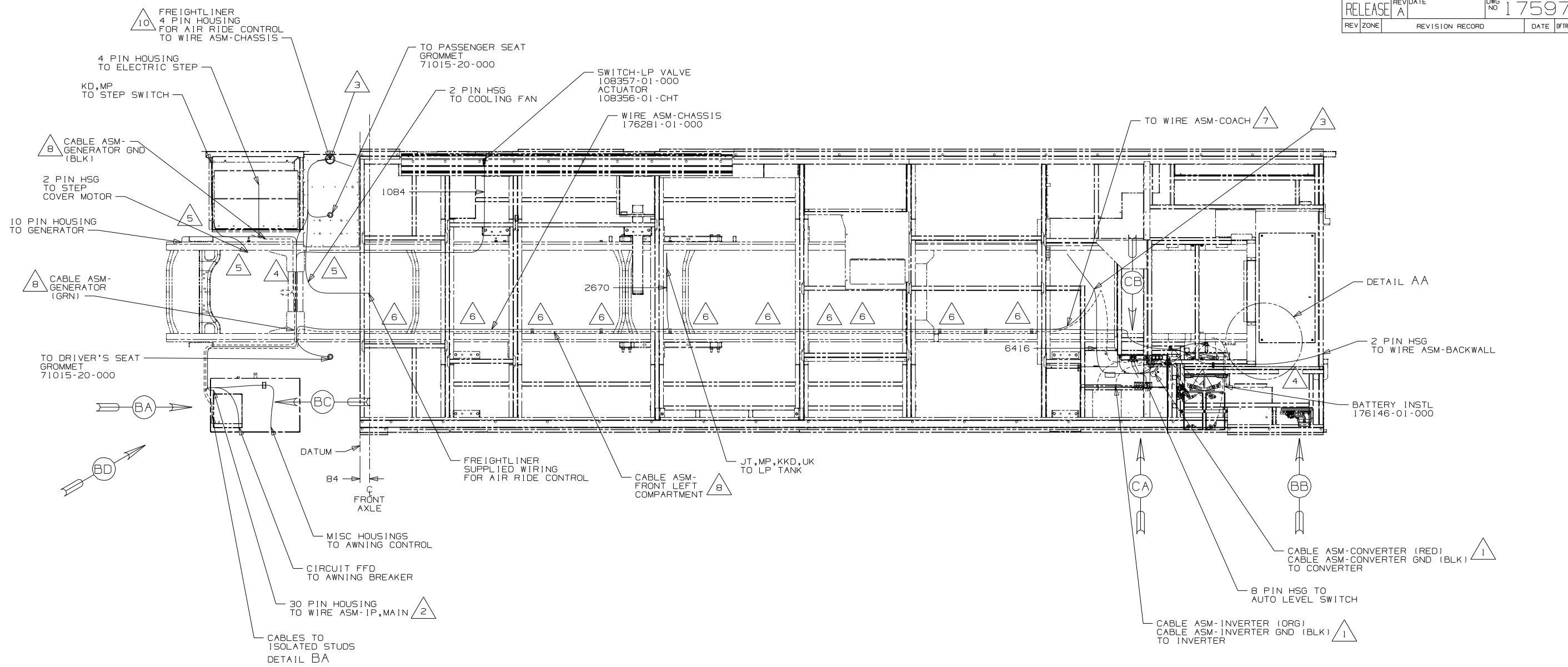
DANGER

Danger of electrical shock, burns or death. Always remove all power sources before attempting any repair, service or diagnostic work. Power can be present from shore power, generator, inverter or battery. All power sources must be disabled and secured before performing any service.

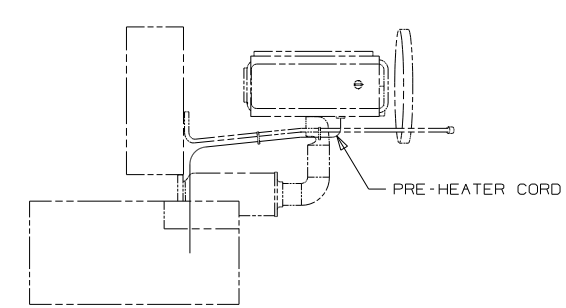


CAUTION

If you lack the skills, tools or equipment to perform diagnostic or repair work leave such work to an authorized Winnebago Industries dealer or other qualified shop.



- NOTES:
- 10 CONNECTION TO BE MADE ABOVE FLOOR.
 - 9 SECURE CORD AWAY FROM ALL MOVING PARTS AND EXHAUST WITH TIE-WIRE 93147-01-000 AS REQUIRED.
 - 8 SEE BATTERY INSTL FOR ADDITIONAL INFORMATION.
 - 7 SEE WIRE ASM-CHASSIS FOR ADDITIONAL INFORMATION.
 - 6 CLAMP 83610-01-000, SCREW G39-08-12B
 - 5 CLAMP 10497-03-000, SCREW G39-08-12B
 - 4 USE TIE-WIRE 8343-04-000 TO SECURE WIRES TO FLOOR SUPPORT FRAME AT LEAST ONCE EVERY 600MM.
 - 3 WIRE ASM-CHASSIS PASSES THROUGH FLOOR IN THIS AREA.
 - 2 SEE WIRING INSTL-FRONT END FOR ADDITIONAL INFORMATION.
 - 1 SEE WIRING INSTL-BODY FOR ADDITIONAL INFORMATION.

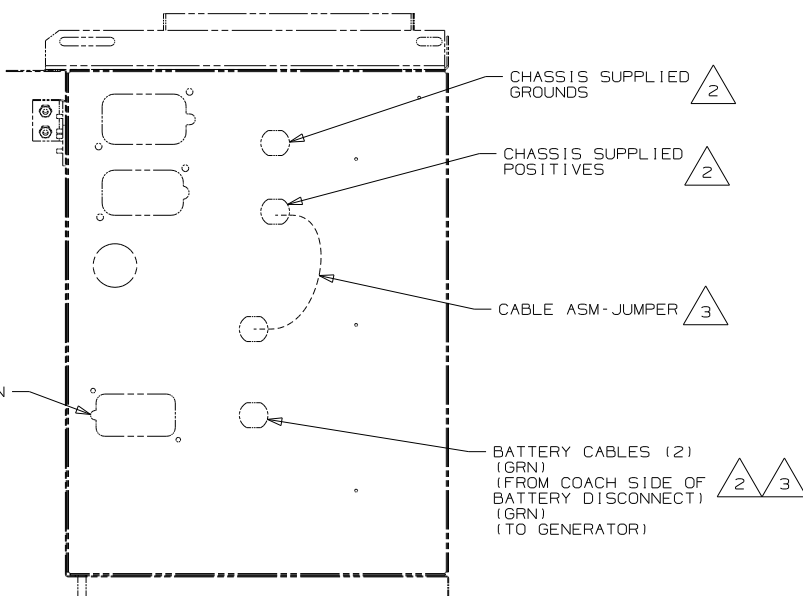


FOR ELECTRICAL TORQUE SPECIFICATIONS SEE DWG NO. 128783-01-000

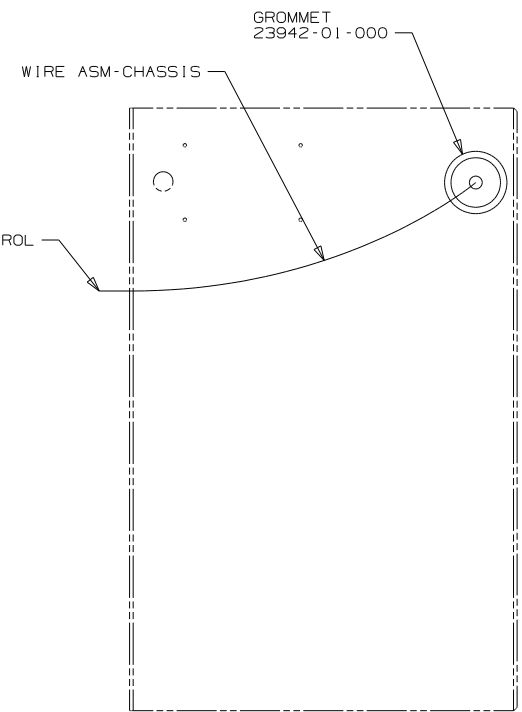
X-X FOR ELECTRICAL CALLOUTS SEE DWG NO. 121339-01-000

1LT FRTL 27,910 340 6.7L 6 SPEED
 265 CODES/STANDARDS-CSA/CMVSS
 1B1 CODES/STANDARDS USA
 1B1 265

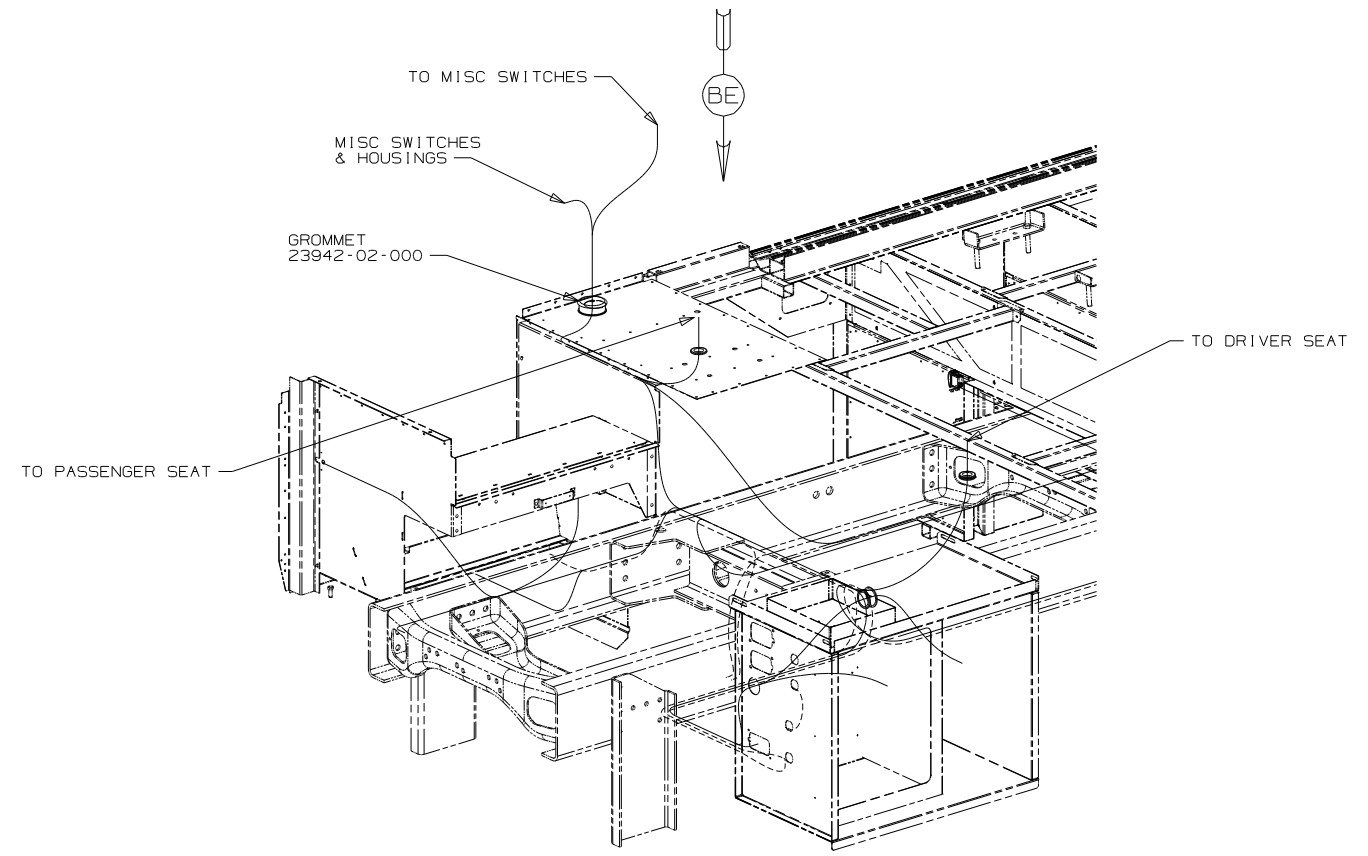
		COPYRIGHT 2010 WINNEBAGO INDUSTRIES, INC.
DFTR	ORIG. DATE	
CHKR	ALL DIMENSIONS ARE IN MILLIMETERS	
P.E.		
M.E.	FIRST USED	11 P34Y
DSNR		
UNSPECIFIED TOLERANCES ARE:	MATERIAL:	
WHOLE DIM (X)	: 3	X
ONE-PLACE (X.X)	: 1.5	X
TWO-PLACE (X.XX)	: 0.50	X
ANGLE	: 1°	X
THIRD ANGLE PROJECTION		X
DO NOT SCALE DRAWING		
TITLE: WIRING INSTL-CHASSIS		
SHEET 1 of 4	PART NO	175975
REF:	1 9/27/2010	



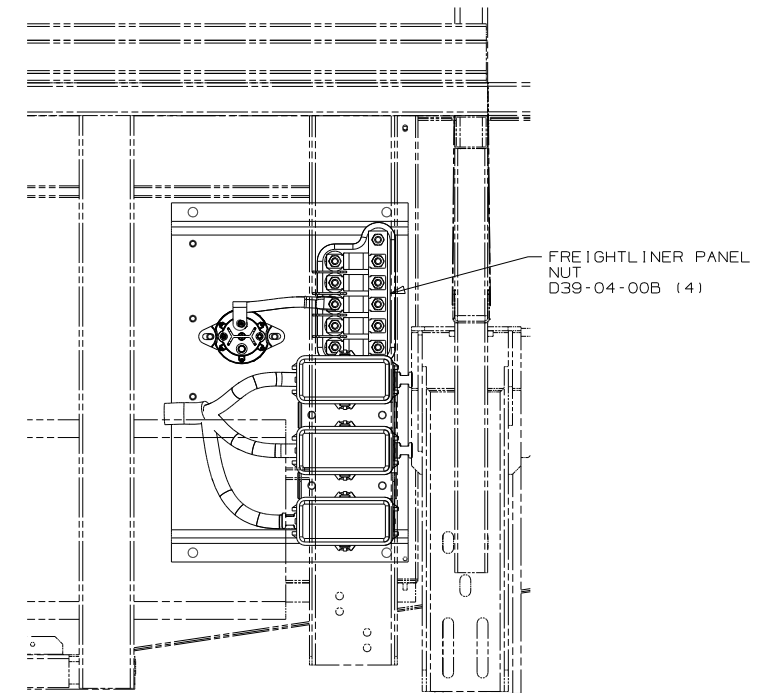
DETAIL BA



VIEW BC



VIEW BD



VIEW BB

- NOTES:
- (3) SEE BATTERY INSTL FOR ADDITIONAL INFORMATION.
 - (2) SEE WIRING INSTL-FRONT END FOR ADDITIONAL INFORMATION.
 - (1) SEE WIRING INSTL-BODY, 12V FOR ADDITIONAL INFORMATION.

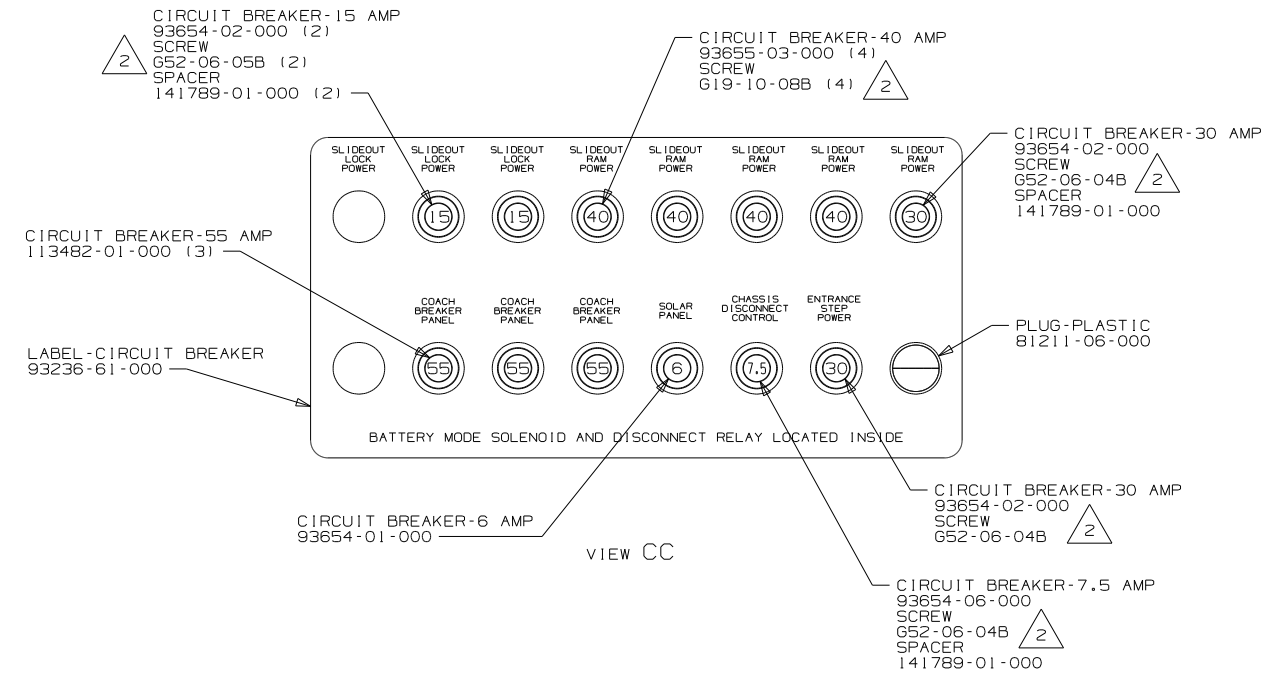
- (ILT) FRTL 27,910 340 6.7L 6 SPEED
- (265) CODES/STANDARDS-CSA/CMVSS
- (1B1) CODES/STANDARDS USA

(1B1) (265) (ILT)

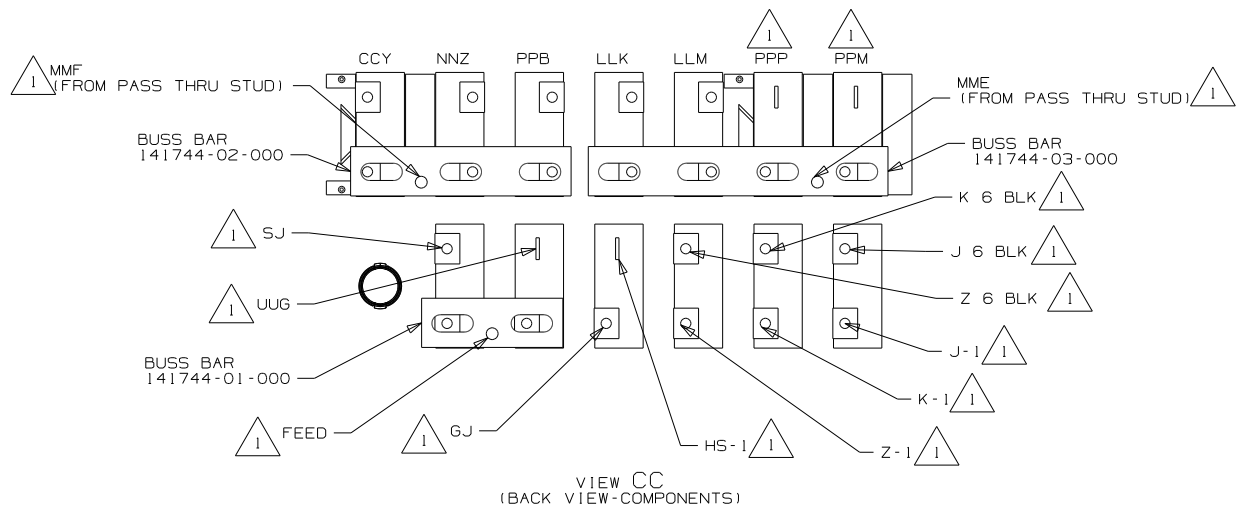
FIRST USED	11 P34Y
TITLE	DO NOT SCALE DRAWING
	WIRING INSTL-CHASSIS
SHEET 2	PART NO 175975 REV

FOR ELECTRICAL TORQUE SPECIFICATIONS SEE DWG NO. 128783-01-000

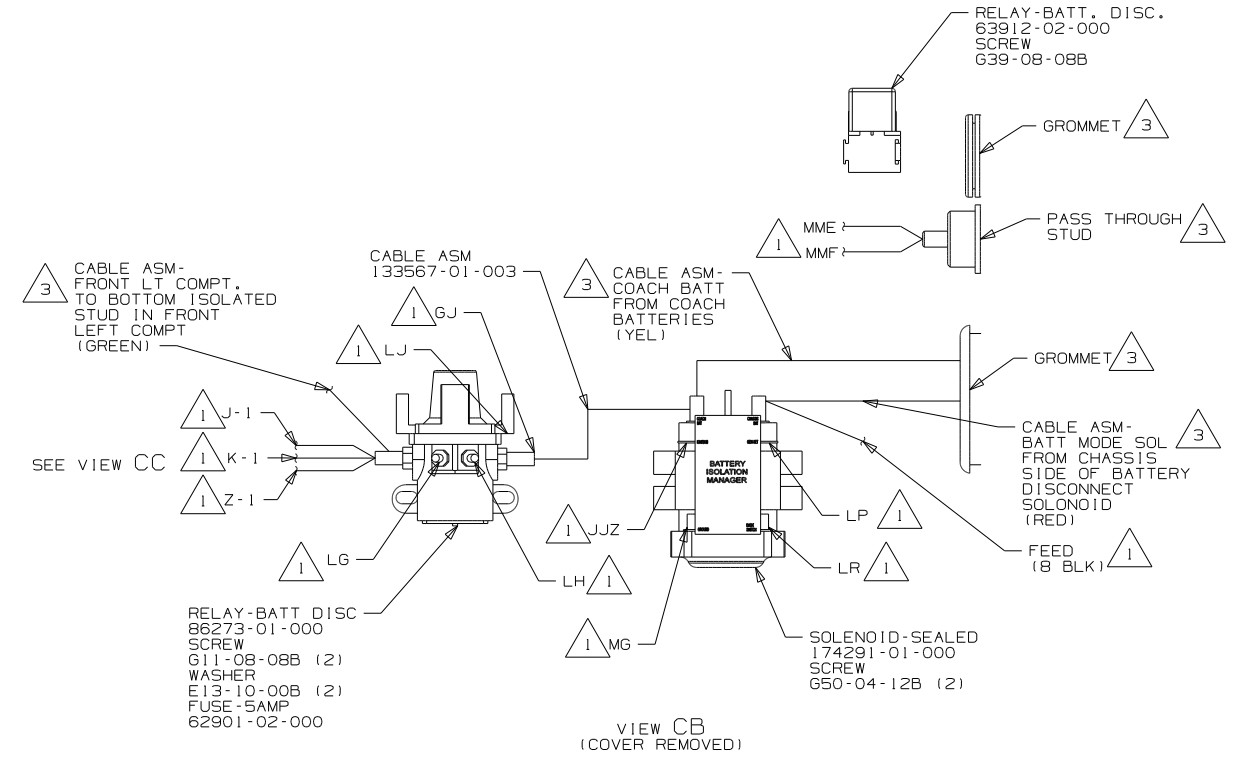
(X-X) FOR ELECTRICAL CALLOUTS SEE DWG NO. 121339-01-000



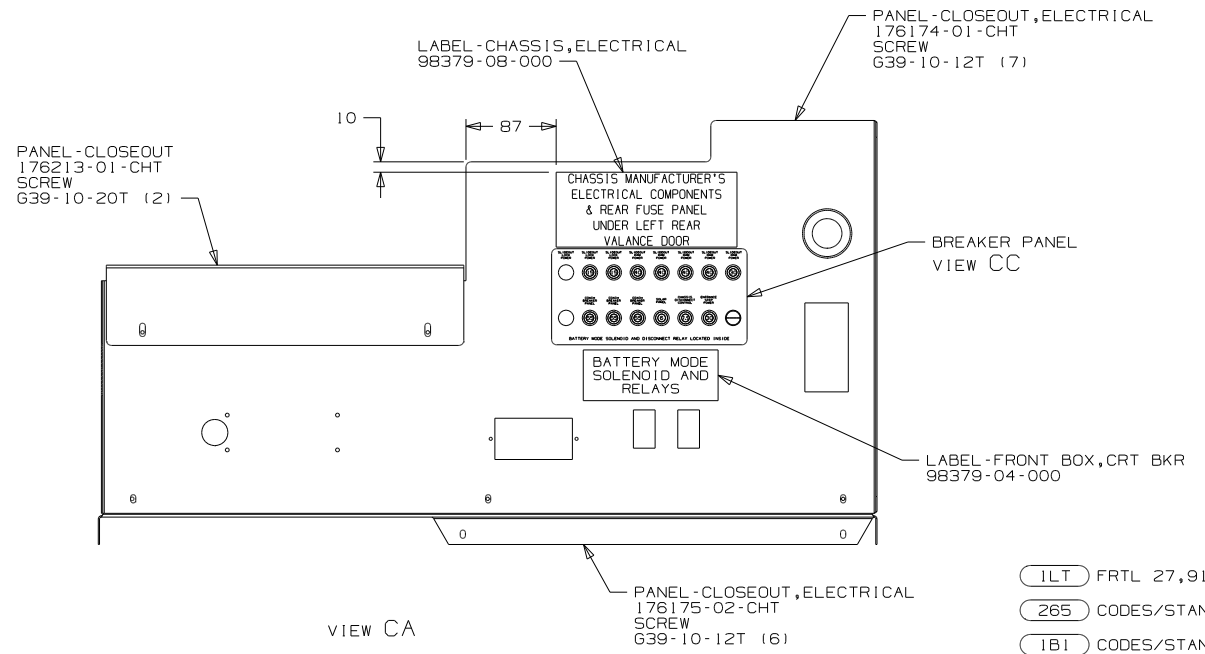
VIEW CC



VIEW CC (BACK VIEW-COMPONENTS)



VIEW CB (COVER REMOVED)



VIEW CA

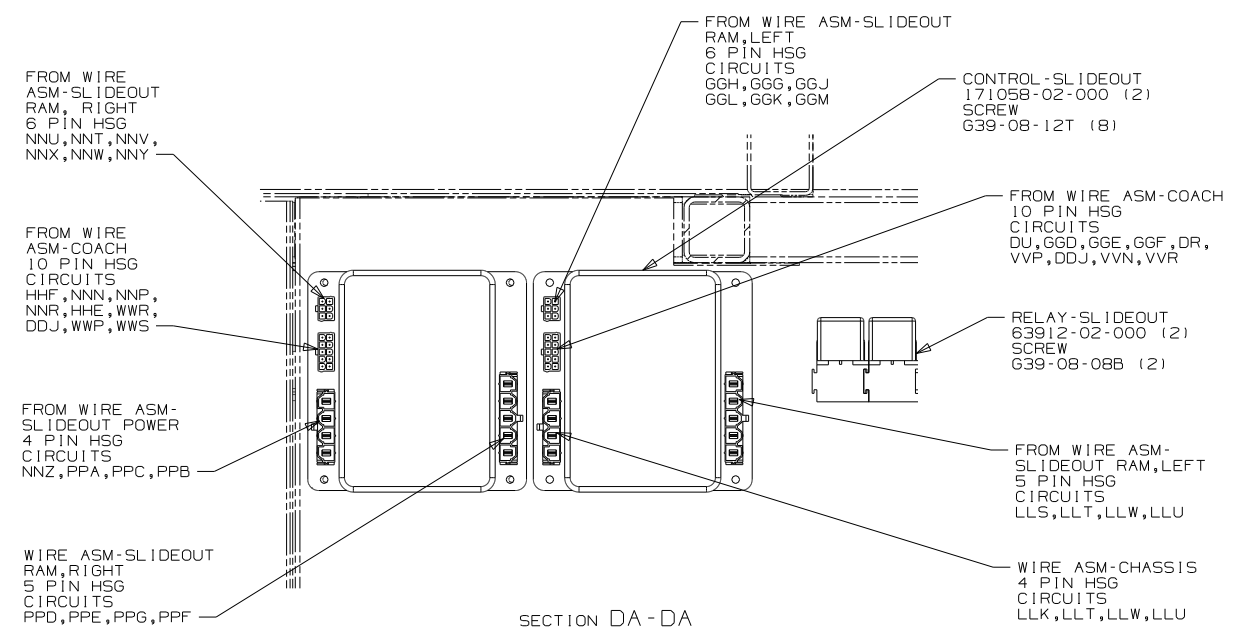
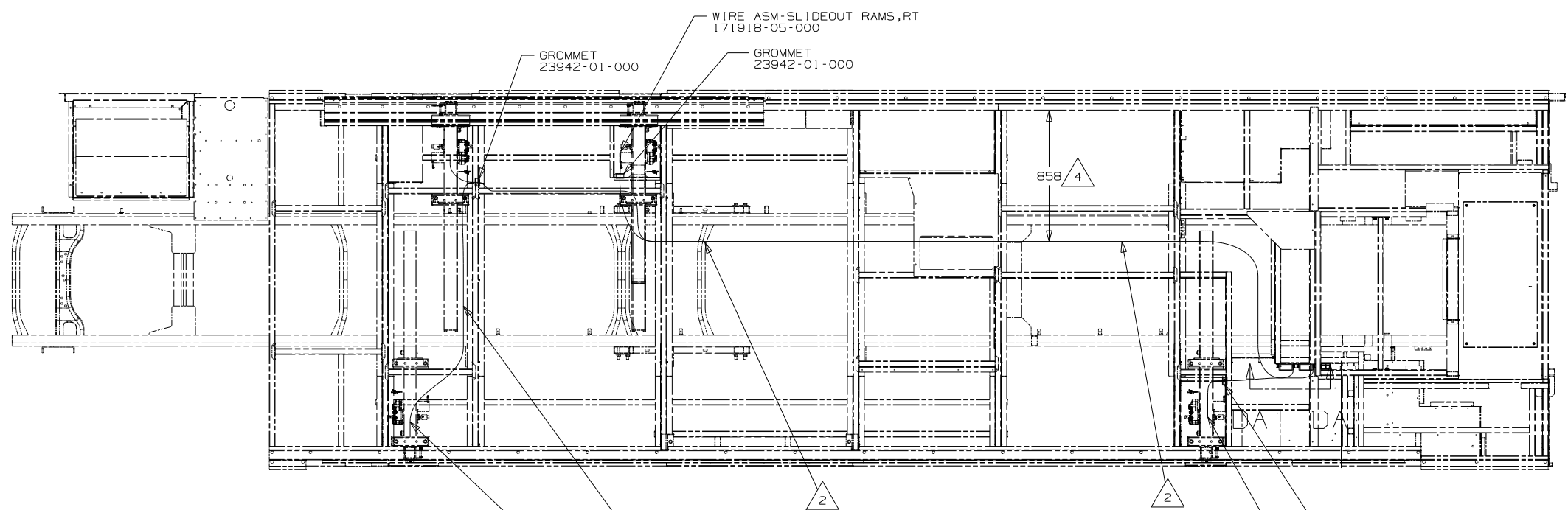
- NOTES:**
- 3 SEE BATTERY INSTL FOR ADDITIONAL INFORMATION.
 - 2 REPLACE EXISTING SCREW TO PROPERLY ATTACH BREAKER TO BUSS BAR.
 - 1 CIRCUITS BRANCH FROM WIRE ASM-CHASSIS.

FOR ELECTRICAL TORQUE SPECIFICATIONS SEE DWG NO. 128783-01-000

FOR ELECTRICAL CALLOUTS SEE DWG NO. 121339-01-000

- 1LT FRTL 27,910 340 6.7L 6 SPEED
- 265 CODES/STANDARDS-CSA/CMVSS
- 1B1 CODES/STANDARDS USA

FIRST USED	11 P34Y
TITLE	DO NOT SCALE DRAWING
TITLE	WIRING INSTL-CHASSIS
SHEET 3	PART NO 175975 REV



- △ 4 ROUTE WIRES AT GIVEN DIMENSION SO THAT THE WIRES ARE NOT PINCHED BY HOLDING TANK.
- △ 3 SECURE SLIDEOUT RAM WIRES TO SLIDEOUT MOTOR WITH WIRE TIE 8343-04-000.
- △ 2 WIRES ROUTED IN COMPARTMENTS IN THIS AREA.

1. ALL WIRES TO BE CLAMPED WITH CLAMP 10495-01-000 OR WIRE TIE 8343-02-000 EVERY 600MM, UNLESS OTHERWISE SPECIFIED.

NOTES:

FOR ELECTRICAL TORQUE SPECIFICATIONS SEE DWG NO. 128783-01-000

FOR ELECTRICAL CALLOUTS SEE DWG NO. 121339-01-000

- ILT FRTL 27,910 340 6.7L 6 SPEED
- 265 CODES/STANDARDS-CSA/CMVSS
- 1B1 CODES/STANDARDS USA

FIRST USED	
11 P34Y	
DO NOT SCALE DRAWING	
TITLE: WIRING INSTL-CHASSIS	
SHEET 4	PART NO 175975 REV