



DANGER

Danger of electrical shock, burns or death. Always remove all power sources before attempting any repair, service or diagnostic work. Power can be present from shore power, generator, inverter or battery. All power sources must be disabled and secured before performing any service.



CAUTION

If you lack the skills, tools or equipment to perform diagnostic or repair work leave such work to an authorized Winnebago Industries dealer or other qualified shop.

	P40L/P40U
CABLE ASM (YEL) FROM COACH BATTERY TO COACH STUD,JUMP START	175207-52-076
CABLE ASM (YEL) FROM STUD,JUMP START TO COACH SIDE OF AUX START SOLENOID	175207-52-009
CABLE ASM (BLK) FROM STUD,JUMP START "GROUND" TO FRAME RAIL GROUND	175211-01-005
CABLE ASM (YEL) FROM COACH SIDE OF AUX START SOLENOID TO COACH BATTERY DISCONNECT	141416-52-004
CABLE ASM (ORG) FROM COACH BATTERY TO INVERTER FUSE	175207-62-008
CABLE ASM (ORG) FROM INVERTER FUSE TO INVERTER POSITIVE TERMINAL	175207-62-035
CABLE ASM (BLK) FROM BATTERY TO INVERTER NEGATIVE TERRMINAL	175211-01-043
CABLE ASM (BLK) FROM COACH BATTERY TO FRAME RAIL GROUND	175211-02-073
CABLE ASM (PUR) FROM CHASSIS BATTERY DISCONNECT TO CHASSIS ISOLATED STUD	175207-15-010
CABLE ASM (BLU) FROM CHASSIS ISOLATED STUD TO LEVELING SYSTEM PUMP	141416-21-115
CABLE ASM (BLK) FROM LEVELING SYSTEM TO FRAME RAIL GROUND	N/A
CABLE ASM (GRN) FROM COACH BAT DISC RELAY TO PASS THRU STUD IN FRONT LEFT COMPT	141417-42-120
CABLE ASM (GRN) FROM PASS THRU STUD IN FRONT LEFT COMPT TO GENERATOR	141417-42-025
CABLE ASM (BLK) FROM GENERATOR TO FRAME RAIL GROUND BOLT	133568-12-013
CABLE ASM (YEL) JUMPER BETWEEN POSITIVE POSTS ON COACH BATTERY	141417-51-002 (4) 141417-52-004 (1)
CABLE ASM (BLK) JUMPER BETWEEN NEGATIVE POSTS ON COACH BATTERY	133568-11-002 (4) 133568-12-004 (1)
CABLE ASM (YEL) JUMPER BETWEEN POSITIVE POSTS ON COACH BATTERY	141417-51-002 (2) 141417-52-004 (1)
CABLE ASM (BLK) JUMPER BETWEEN NEGATIVE POSTS ON COACH BATTERY	133568-11-002 (2) 133568-12-004 (1)
CABLE ASM (RED) JUMPER BETWEEN POSITIVE POSTS IN LEFT FRONT COMPT	141417-32-002
CABLE ASM-TEMPERATURE,BATTERY	175385-03-000
CABLE ASM (RED) FROM CHASSIS BATTERY TO CHASSIS SIDE OF AUX START SOLENOID	175207-35-013



2

1

3

2

4

4
12



13

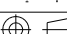
3

- 5 STANDARDIZED LENGTH, CHECK WITH ENGINEERING BEFORE CHANGING.
- 4 WITHOUT 13X
- 3 SEE WIRING INSTL-FRONT END FOR ADDITIONAL INFORMATION.
- 2 SEE WIRING INSTL-CHASSIS FOR ADDITIONAL INFORMATION.
- 1 SEE LEVELING SYSTEM INSTL FOR ADDITIONAL INFORMATION.

13X INVERTER/CHARGER 2.0 KW
265 CODES/STANDARDS-CSA/CMVSS
1B1 CODES/STANDARDS USA

181 265

		COPY RIGHT 2010 WINNEBAGO INDUSTRIES, INC.	
<div style="border: 1px solid black; padding: 2px; text-align: center;">  </div>		ORIG. DATE _____	
CHKR _____		ALL DIMENSIONS ARE IN MILLIMETERS	
P.E. _____			
M.E. _____		FIRST USED <div style="font-size: 2em; font-weight: bold; margin-top: 10px;">11 P-SERIES</div>	
DSNR _____		MATERIAL: _____	

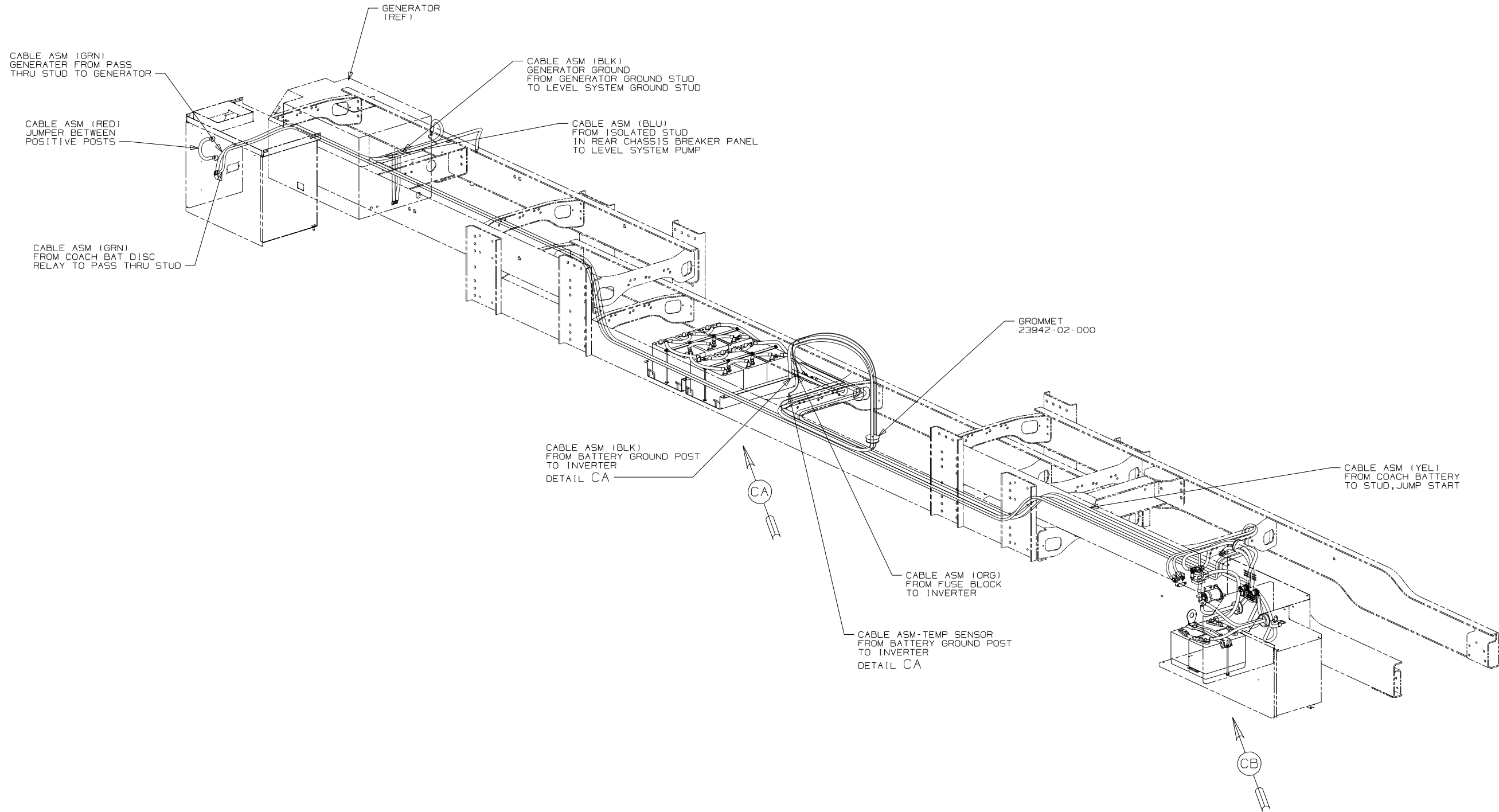
UNSPECIFIED TOLERANCES ARE : WHOLE DIM (X) ± 3 ONE-PLACE (X.X) ± 1.5 TWO-PLACE (X.XX) ± 0.50 ANGLE ± 1°	<div style="text-align: center;">  </div>
THIRD ANGLE PROJECTION	

DO NOT SCALE DRAWING

TITLE:		
BATTERY INSTL		
SHEET 1 OF 3	PART NO	REV
	175321	

FOR ELECTRICAL
TORQUE
SPECIFICATIONS
SEE DWG NO.
128783-01-000

	FOR ELECTRICAL CALLOUTS SEE DWG NO. 121339-01-00
---	--



265 CODES/STANDARDS - CSA/CMVSS

1B1 CODES/STANDARDS USA

1B1 265

11 P-SERIES
DO NOT SCALE DRAWING

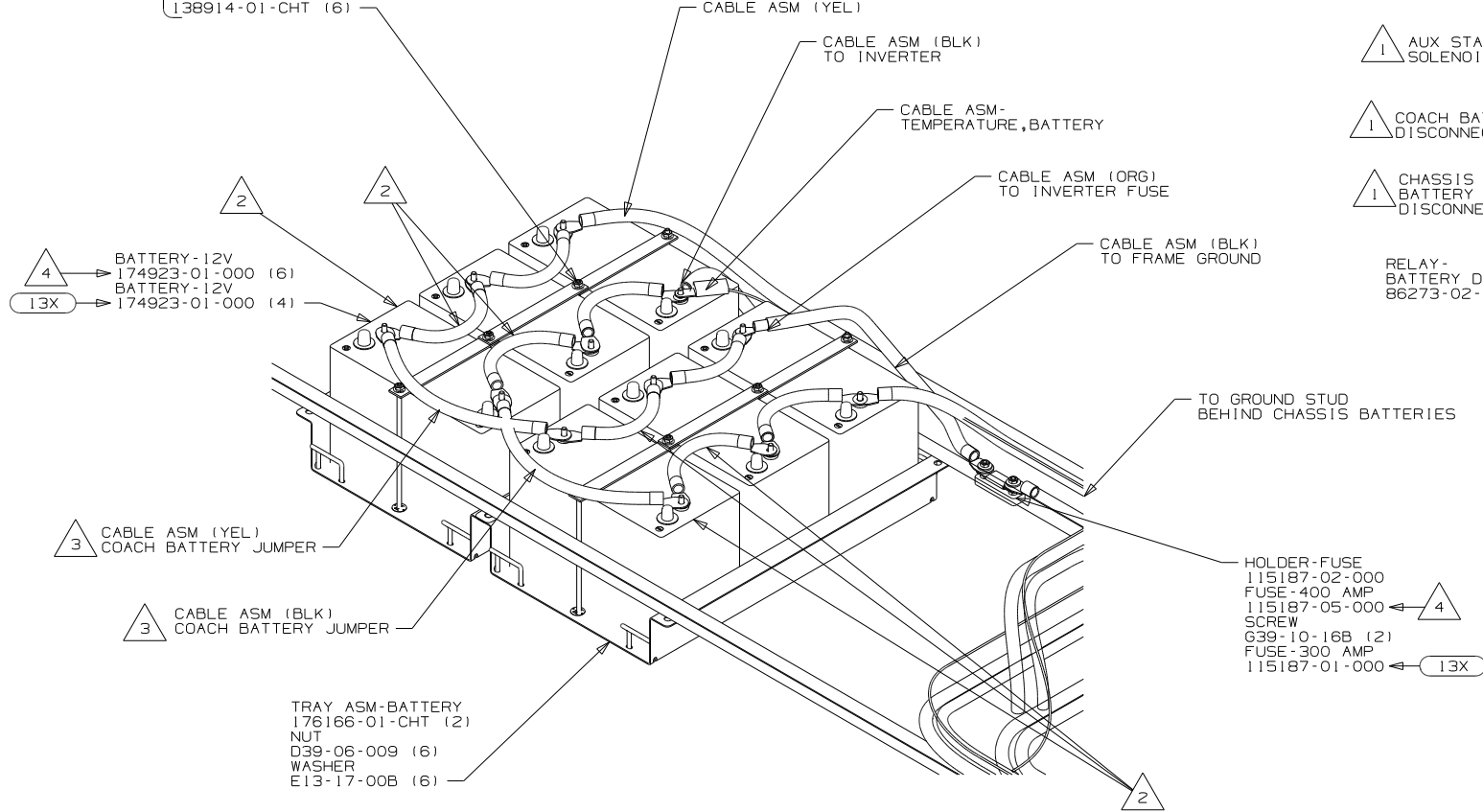
TITLE: BATTERY INSTL

SHEET 2 PART NO 175321 REV

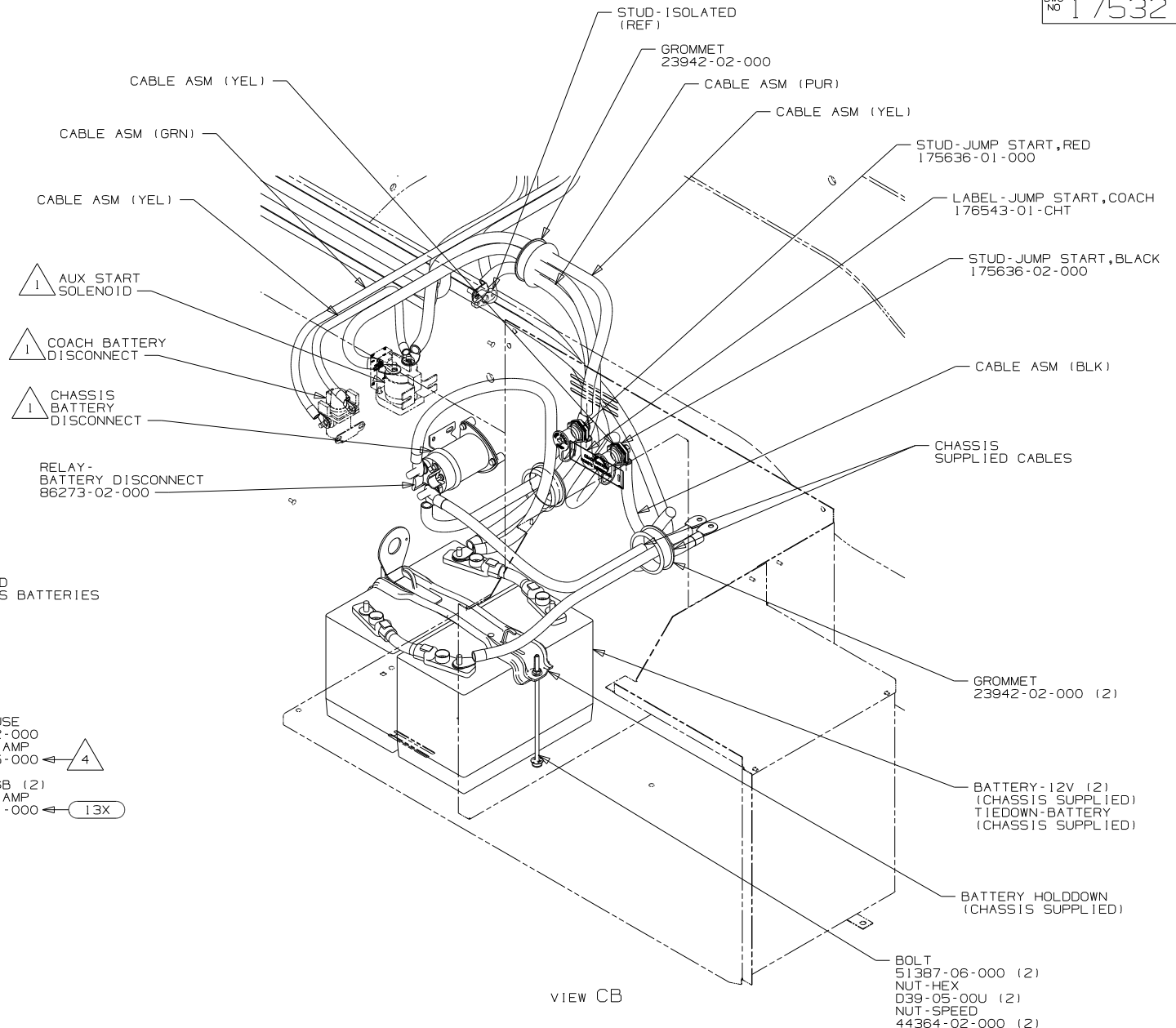
FOR ELECTRICAL
TORQUE
SPECIFICATIONS
SEE DWG NO.
128783-01-000

FOR
ELECTRICAL
CALLOUTS
SEE DWG NO.
121339-01-000

- 13X BOLT
51387-06-000 (6)
NUT-HEX
D39-05-00U (6)
NUT-SPEED
44364-02-000 (6)
STRAP-BATTERY
TIE DOWN
138914-01-CHT (6)
- 4 BOLT
51387-06-000 (8)
NUT-HEX
D39-05-00U (8)
NUT-SPEED
44364-02-000 (8)
STRAP-BATTERY
TIE DOWN
138914-01-CHT (6)



VIEW CA



VIEW CB

- 4 WITHOUT 13X
- 3 CONNECT JUMPER CABLES TO MIDDLE BATTERIES WITH 13X
- 2 COMPONENT NOT USED WITH 13X
- 1 SEE WIRING INSTL-CHASSIS FOR ADDITIONAL INFORMATION.

NOTES:

FOR ELECTRICAL
TORQUE
SPECIFICATIONS
SEE DWG NO.
128783-01-000

FOR ELECTRICAL
CALLOUTS
SEE DWG NO.
121339-01-000

- 13X INVERTER/CHARGER 2.0 KW
- 265 CODES/STANDARDS-CSA/CMVSS
- 1B1 CODES/STANDARDS USA

FIRST USED		11 P-SERIES
		DO NOT SCALE DRAWING
TITLE:		BATTERY INSTL
SHEET 3	PART NO	175321