



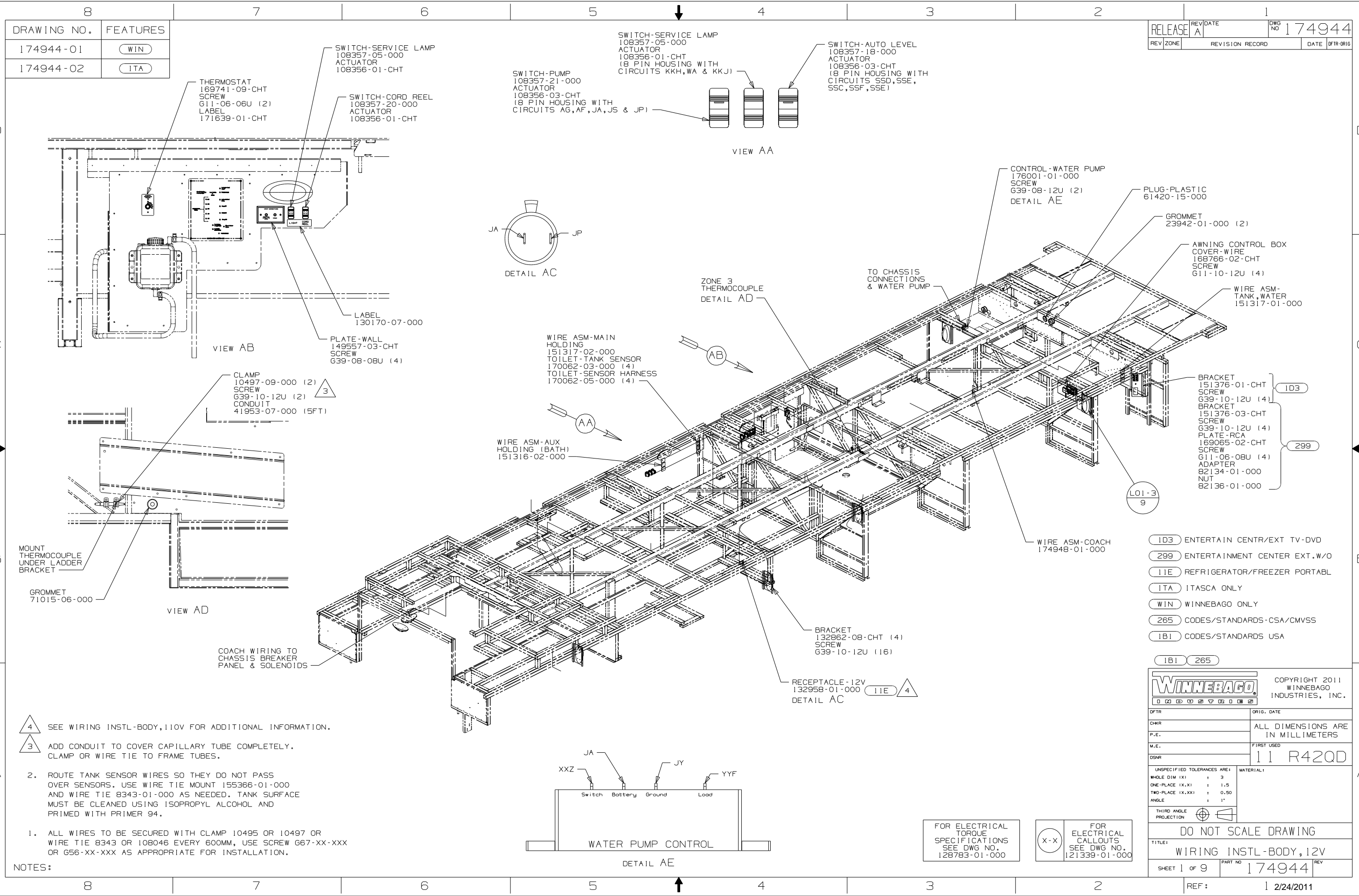
DANGER

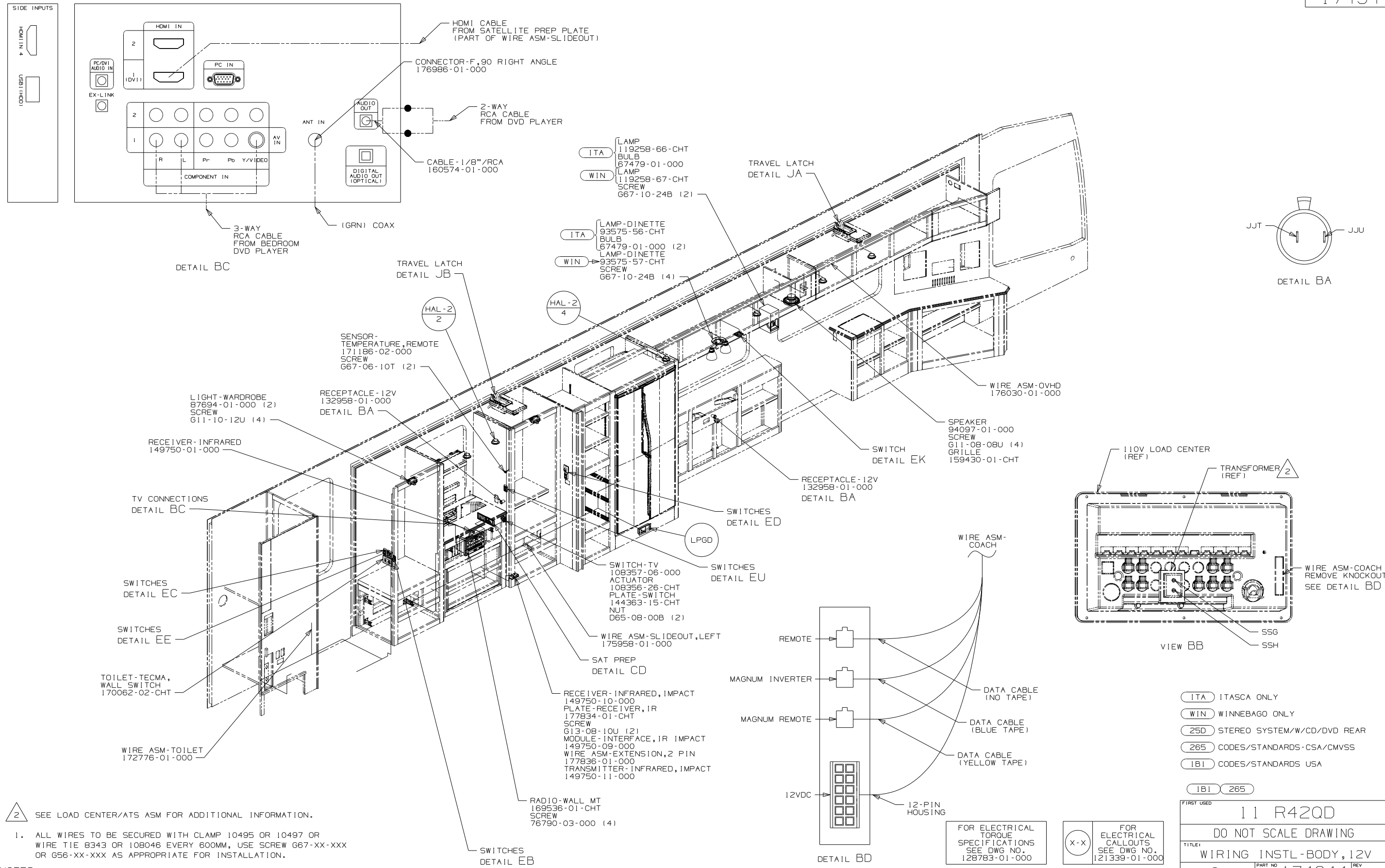
Danger of electrical shock, burns or death. Always remove all power sources before attempting any repair, service or diagnostic work. Power can be present from shore power, generator, inverter or battery. All power sources must be disabled and secured before performing any service.



CAUTION

If you lack the skills, tools or equipment to perform diagnostic or repair work leave such work to an authorized Winnebago Industries dealer or other qualified shop.





NOTES:

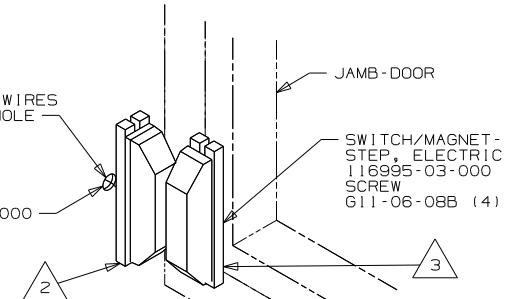
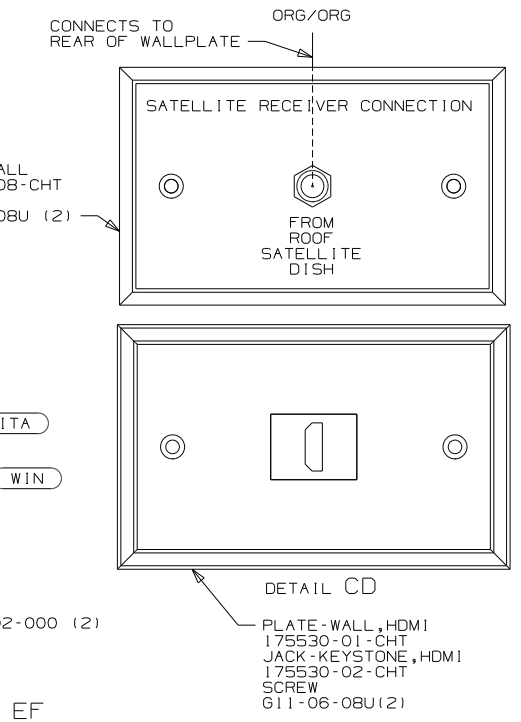
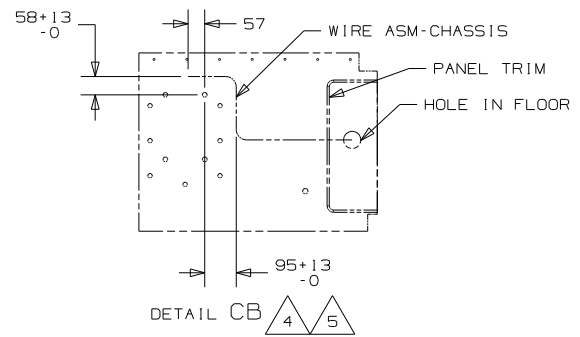
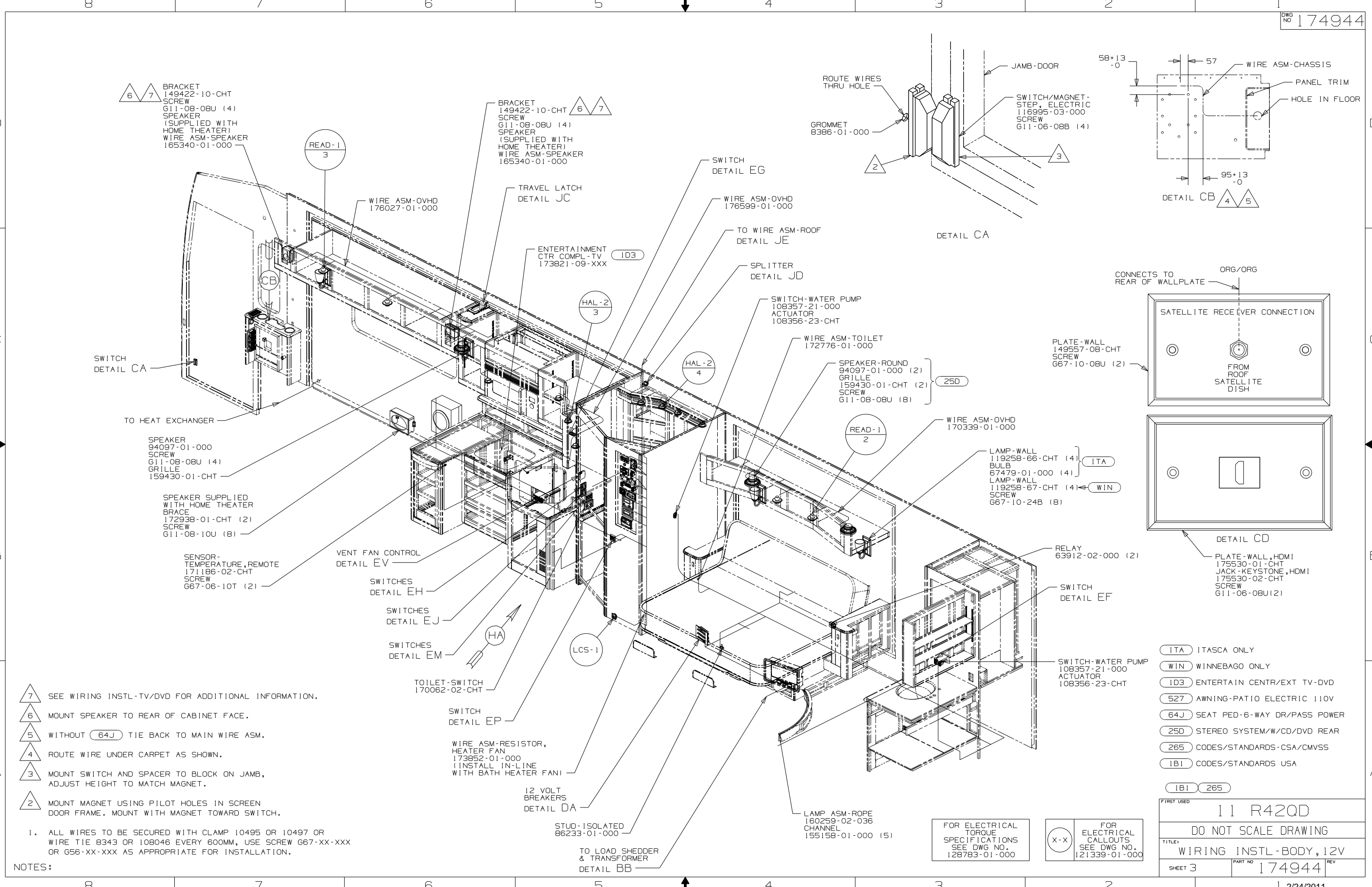
1. ALL WIRES TO BE SECURED WITH CLAMP 10495 OR 10497 OR WIRE TIE 8343 OR 108046 EVERY 600MM, USE SCREW G67-XX-XXX OR G56-XX-XXX AS APPROPRIATE FOR INSTALLATION.

- ITA ITASCA ONLY
WIN WINNEBAGO ONLY
25D STEREO SYSTEM/W/CD/DVD REAR
265 CODES/STANDARDS-CSA/CMVSS
1B1 CODES/STANDARDS USA

FIRST USED		11 R42QD
DO NOT SCALE DRAWING		
TITLE:		WIRING INSTL-BODY, 12V
SHEET 2	PART NO	174944
		REV

FOR ELECTRICAL TORQUE SPECIFICATIONS SEE DWG NO. 128783-01-000

FOR ELECTRICAL CALLOUTS SEE DWG NO. 121339-01-000



- (ITA) ITASCA ONLY
- (WIN) WINNEBAGO ONLY
- (ID3) ENTERTAIN CENTR/EXT TV-DVD
- (527) AWNING-PATIO ELECTRIC 110V
- (64J) SEAT PED-6-WAY DR/PASS POWER
- (25D) STEREO SYSTEM/W/CD/DVD REAR
- (265) CODES/STANDARDS-CSA/CMVSS
- (1B1) CODES/STANDARDS USA

- 7 SEE WIRING INSTL-TV/DVD FOR ADDITIONAL INFORMATION.
- 6 MOUNT SPEAKER TO REAR OF CABINET FACE.
- 5 WITHOUT (64J) TIE BACK TO MAIN WIRE ASM.
- 4 ROUTE WIRE UNDER CARPET AS SHOWN.
- 3 MOUNT SWITCH AND SPACER TO BLOCK ON JAMB, ADJUST HEIGHT TO MATCH MAGNET.
- 2 MOUNT MAGNET USING PILOT HOLES IN SCREEN DOOR FRAME. MOUNT WITH MAGNET TOWARD SWITCH.

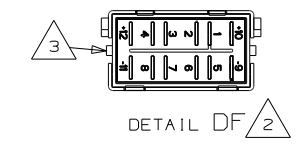
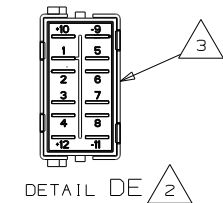
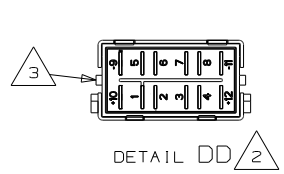
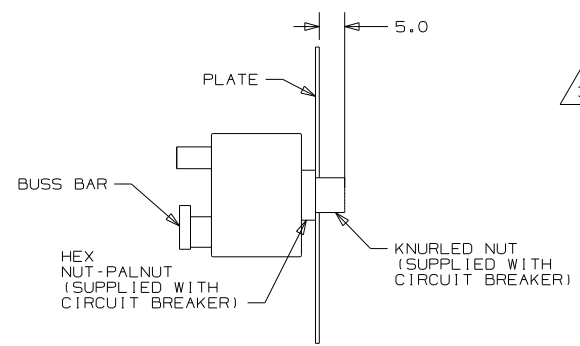
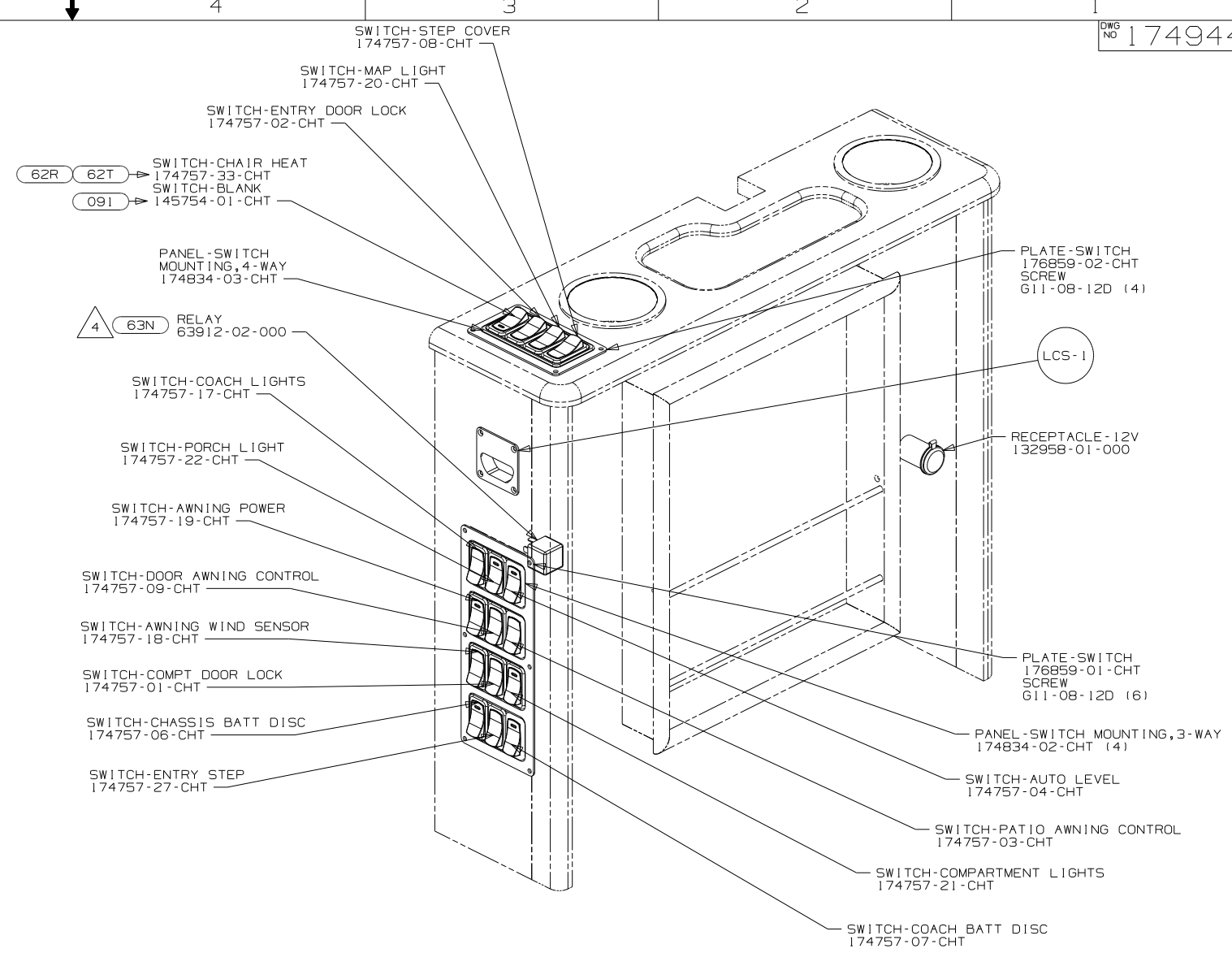
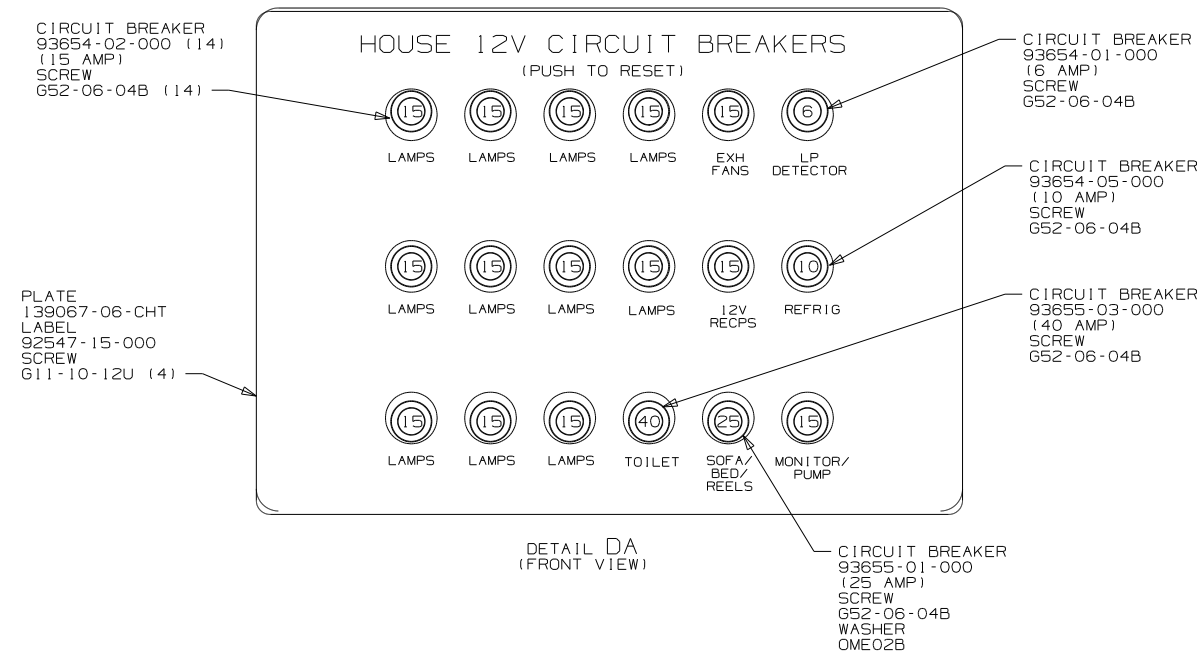
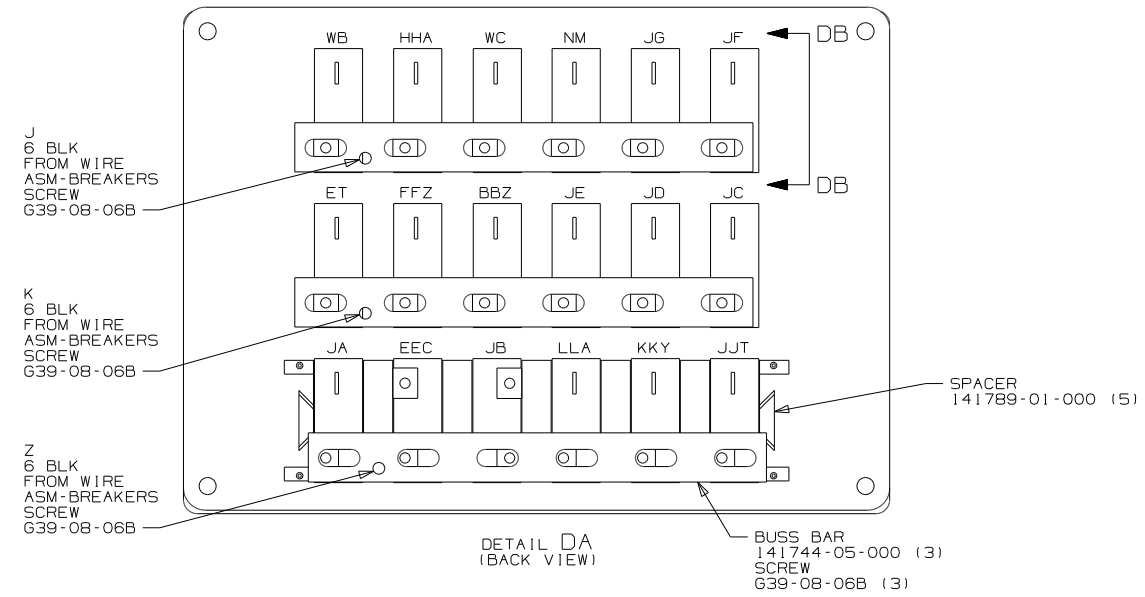
1. ALL WIRES TO BE SECURED WITH CLAMP 10495 OR 10497 OR WIRE TIE 8343 OR 108046 EVERY 600MM, USE SCREW 667-XX-XXX OR G56-XX-XXX AS APPROPRIATE FOR INSTALLATION.

NOTES:

FOR ELECTRICAL TORQUE SPECIFICATIONS SEE DWG NO. 128783-01-000

FOR ELECTRICAL CALLOUTS SEE DWG NO. 121339-01-000

FIRST USED	
11 R42QD	
DO NOT SCALE DRAWING	
TITLE: WIRING INSTL-BODY, 12V	
SHEET 3	PART NO 174944
REV	



- 5 SEE WIRING INSTL-CHASSIS FOR ADDITIONAL INFORMATION.
- 4 SCREW RELAY HOUSING TO SIDEWALL WITH SCREW G11-10-12U.
- 3 WITH SWITCH INSTALLED, THIS SIDE OF SWITCH WILL FACE LEFT SIDEWALL.
- 2 DETAIL IS LOOKING AT SWITCH FROM THE BACKSIDE OF SWITCH WHEN IT IS INSTALLED.

1. ALL WIRES TO BE SECURED WITH CLAMP 10495 OR 10497 OR WIRE TIE 8343 OR 108046 EVERY 600MM, USE SCREW G67-XX-XXX OR G56-XX-XXX AS APPROPRIATE FOR INSTALLATION.

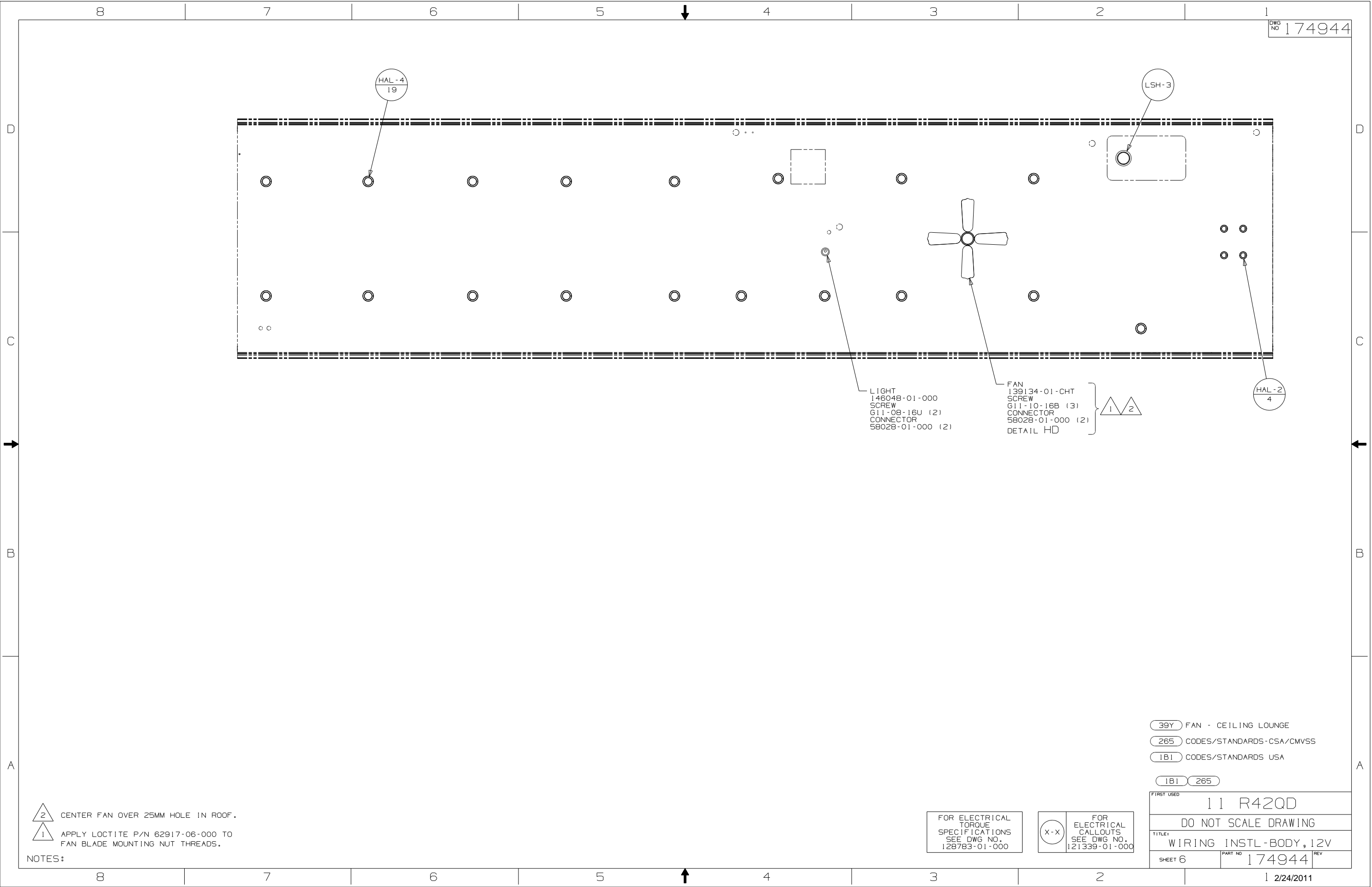
NOTES:

FOR ELECTRICAL
TORQUE
SPECIFICATIONS
SEE DWG NO.
128783-01-000

	FOR ELECTRICAL CALLOUTS SEE DWG NO. 121339-01-000
---	---

(62R) SEATS-W/QUEEN PASS.- HEATED
 (62T) SEATS-CAB-HEATED
 (09I) CAB SEATS-ULTRALEATHER
 (63N) AWNING-ENTRY, ELECTRIC
 (265) CODES/STANDARDS-CSA/CMVSS
 (IBI) CODES/STANDARDS USA

1B1		265	
FIRST USED			
11 R42QD			
DO NOT SCALE DRAWING			
TITLE:			
WIRING INSTL - BODY, 12V			
SHEET 4		PART NO	REV
		174944	



DWG NO 174944

HAL-4
19

LSH-3

HAL-2
4

LIGHT
146048-01-000
SCREW
611-08-16U (2)
CONNECTOR
58028-01-000 (2)

FAN
139134-01-CHT
SCREW
611-10-16B (3)
CONNECTOR
58028-01-000 (2)
DETAIL HD

1 2

2
1
CENTER FAN OVER 25MM HOLE IN ROOF.
APPLY LOCTITE P/N 62917-06-000 TO
FAN BLADE MOUNTING NUT THREADS.

NOTES:

FOR ELECTRICAL
TORQUE
SPECIFICATIONS
SEE DWG NO.
128783-01-000

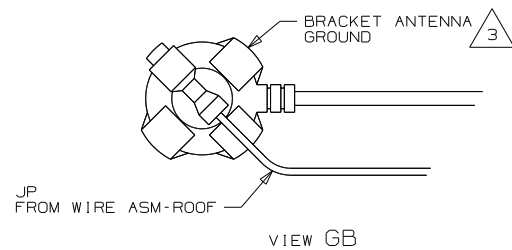
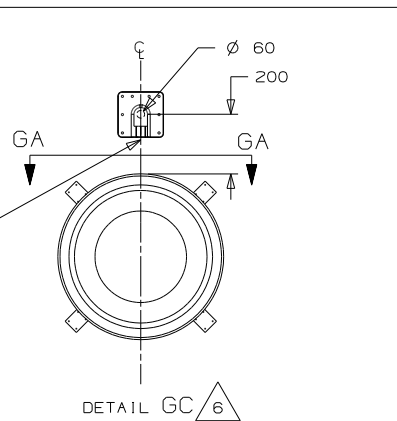
FOR
ELECTRICAL
CALLOUTS
SEE DWG NO.
121339-01-000

39Y FAN - CEILING LOUNGE
265 CODES/STANDARDS-CSA/CMVSS
1B1 CODES/STANDARDS USA

1B1 265

FIRST USED
11 R42QD
DO NOT SCALE DRAWING
TITLE:
WIRING INSTL - BODY, 12V
SHEET 6 PART NO 174944 REV
1 2/24/2011

THE SATELLITE DISH WIRE CONNECTIONS ARE TO BE PLACED ON THE CENTERLINE OF THE MOTORHOME FACING FORWARD



3 PLATE 146488-01-000
SCREW 667-10-12B (10)

SOLAR

D1-2 48P 2
DETAIL GC
DA-2 78K 2
DETAIL GC

ANT-A 1D3

ANT-A 25E

GB

CONNECT CABLE ASM
SATELLITE CONTROL
FROM ROOF ASM TO
SATELLITE DISH HERE

CONNECT 9" CABLE ASM COAX
(REAR TV ORG/ORG) FROM ROOF ASM
TO AUX INPUT ON SATELLITE DISH

CONNECT 8" CABLE ASM COAX
(FRONT TV ORG) FROM ROOF ASM
TO MAIN INPUT ON SATELLITE DISH

VIEW GA-GA

FOR ELECTRICAL
TORQUE
SPECIFICATIONS
SEE DWG NO.
128783-01-000

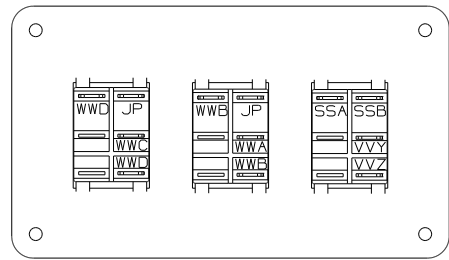
FOR ELECTRICAL
CALLOUTS
SEE DWG NO.
121339-01-000

- 78K SATELLITE DISH-AUTOMATIC
- 193 TV ANTENNA-AMPLIFIED SYSTEM
- 192 TV ANTENNA-AMPLIFIED SYS PWR
- 1D3 ENTERTAIN CTR/EXT TV-DVD
- 48P SAT TV SYSTEM IN-MOTION
- 290 SOLAR PANEL - 10 WATT
- 25E REAR STEREO SYSTEM W/CD
- 1D5 ENTERTAINMENT CTR/EXT W/CD
- 265 CODES/STANDARDS-CSA/CMVSS
- 1B1 CODES/STANDARDS USA

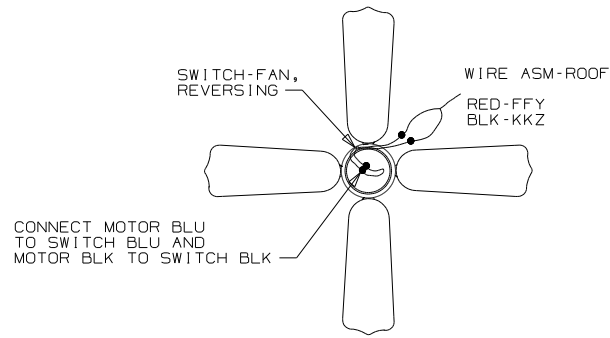
1B1 265

FIRST USED		11 R42QD	
DO NOT SCALE DRAWING			
TITLE: WIRING INSTL-BODY, 12V			
SHEET 7	PART NO	174944	REV

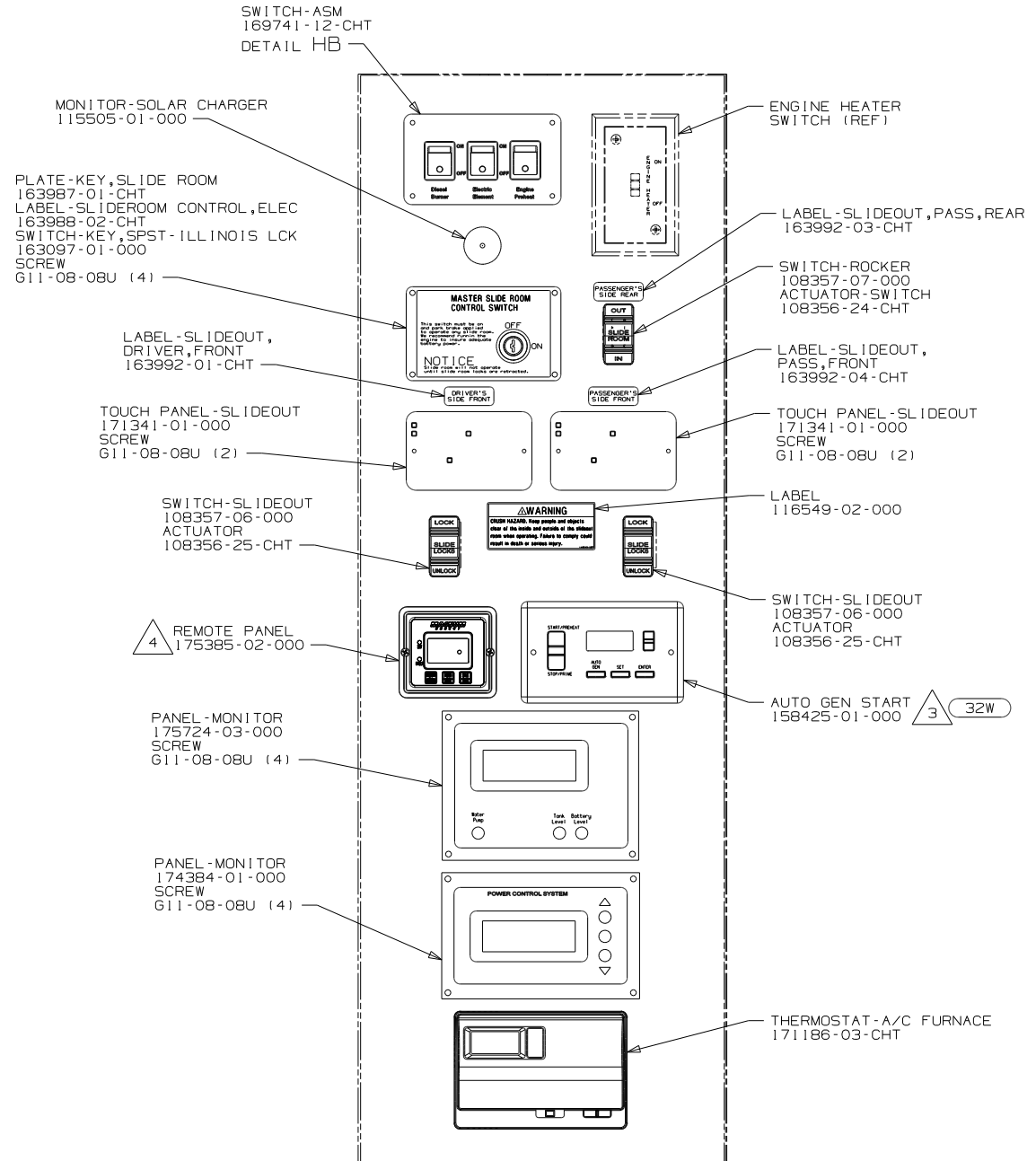
- NOTES:
- 7 SEE ANTENNA INSTALLATION MANUAL FOR CORRECT INSTALLATION PROCEDURE.
 - 6 CUT AND REMOVE SHIPPING STRAPS.
 - 5 MOUNT GPS ANTENNA AS FAR TO THE REAR OF THE SATELLITE AS POSSIBLE. SECURE CABLE WITH ROOF SEALANT.
 - 4 SEE DETAIL GD FOR SATELLITE LOCATION.
 - 3 SEAL
 - 2 SEE MANUFACTURER'S INSTALLATION FOR ADDITIONAL INFORMATION.
 - 1 WRAP BRACKET LEGS AROUND ANTENNA BASE.



DETAIL HB



DETAIL HD



DETAIL HA

- 4 SET 'BAT TYPE' TO 'AGM2'
SET 'LBCO' TO '11VDC'
SEE OWNER'S MANUAL FOR SETUP PROCEDURE
- 3 SET 'GEN TYPE' TO MATCH GENERATOR MODEL INSTALLED IN COACH.
SET 'SAFETY TYPE' TO 'IGNITION'.
SEE OWNER'S MANUAL FOR SETUP PROCEDURE.
- 2 INSTALL GASKET ON BACK SIDE OF ONE PLACE AFTER
INSTALLATION OF THERMOSTAT, MAKING SURE THAT THE
GASKET COVERS AND SEALS THE HOLE THAT THE WIRES
PASS THROUGH.
- 1 CONNECT CIRCUIT WB FROM COACH WIRING
TO RED WIRE ON REMOTE PANEL.

NOTES:

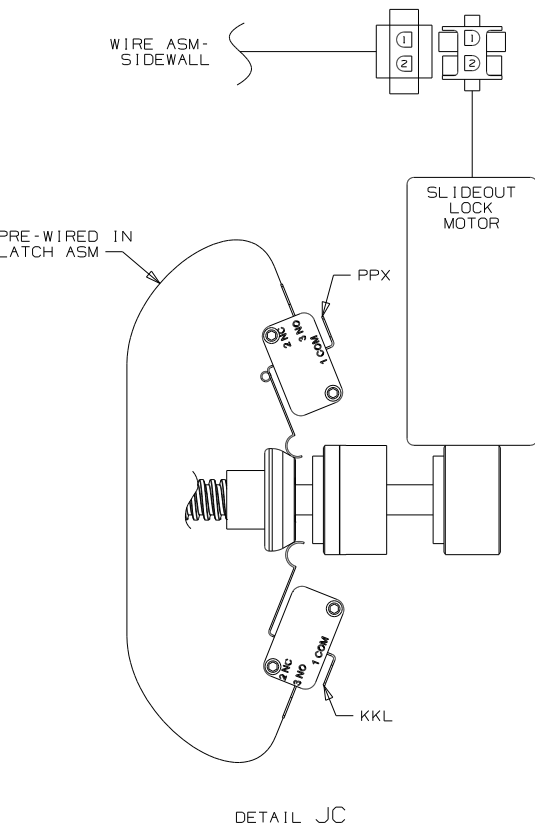
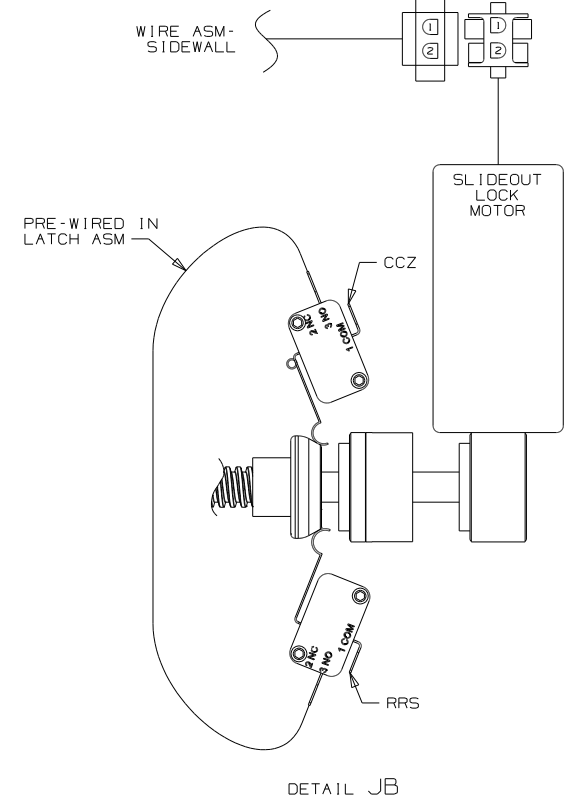
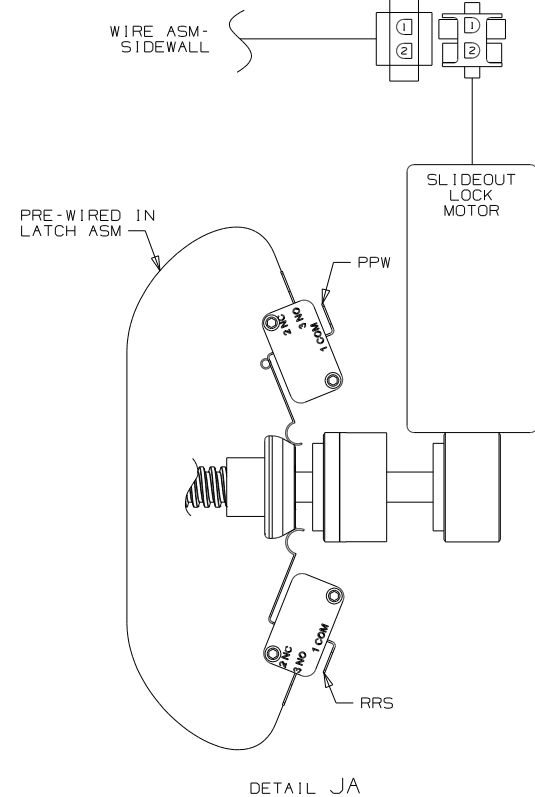
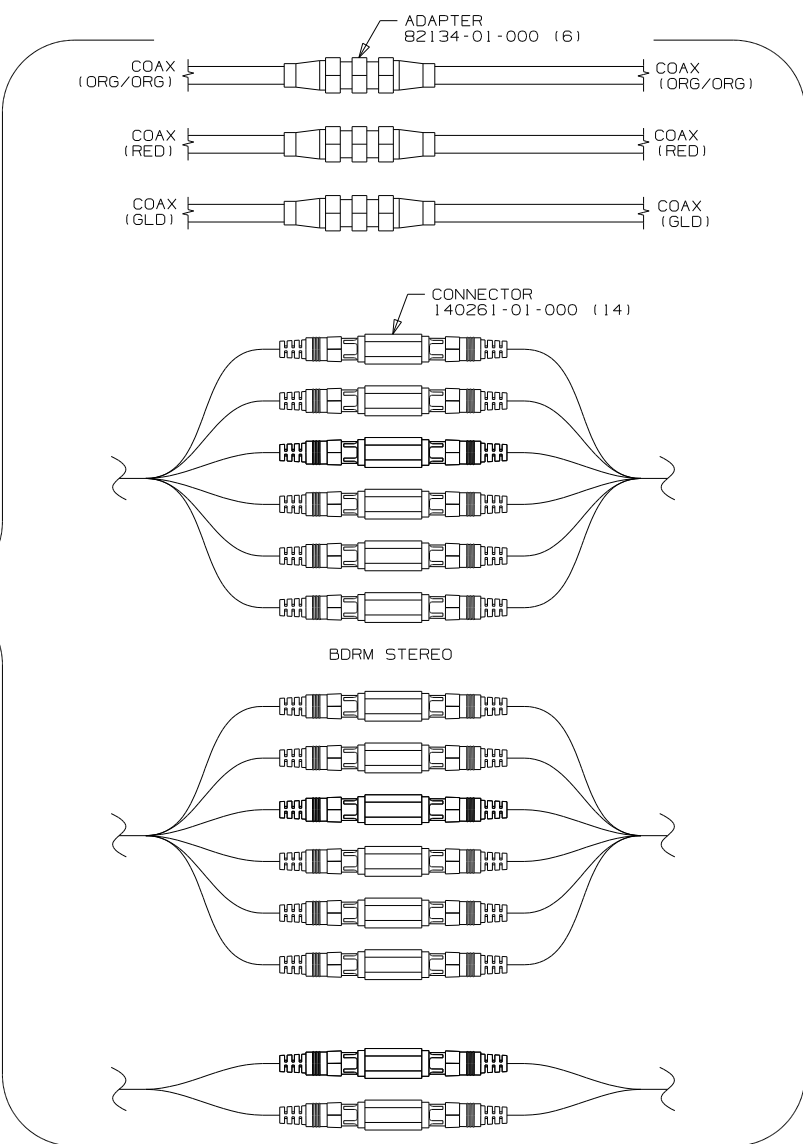
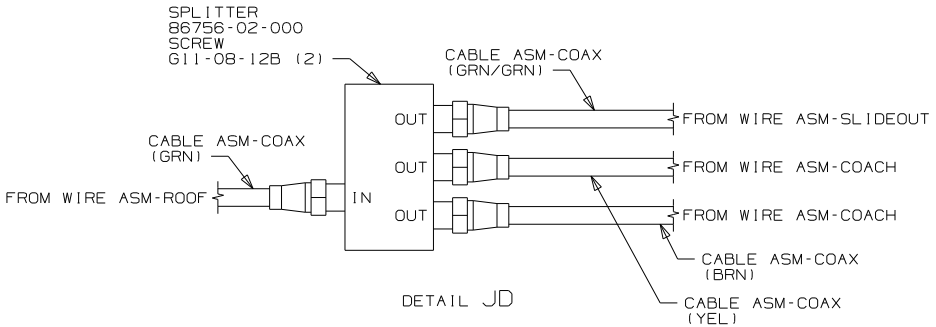
FOR ELECTRICAL
TORQUE
SPECIFICATIONS
SEE DWG NO.
128783-01-000

FOR
ELECTRICAL
CALLOUTS
SEE DWG NO.
121339-01-000

32W GENERATOR-START,AUTO SYSTEM
265 CODES/STANDARDS-CSA/CMVSS
1B1 CODES/STANDARDS USA

1B1 265

FIRST USED
11 R42QD
DO NOT SCALE DRAWING
TITLE:
WIRING INSTL-BODY,12V
SHEET 8 PART NO 174944 REV



265 CODES/STANDARDS-CSA/CMVSS
1B1 CODES/STANDARDS USA
1B1 265

FOR ELECTRICAL
TORQUE
SPECIFICATIONS
SEE DWG NO.
128783-01-000

FOR ELECTRICAL
CALLOUTS
SEE DWG NO.
121339-01-000

11 R42QD		
DO NOT SCALE DRAWING		
TITLE: WIRING INSTL-BODY, 12V		
SHEET 9	PART NO 174944	REV