



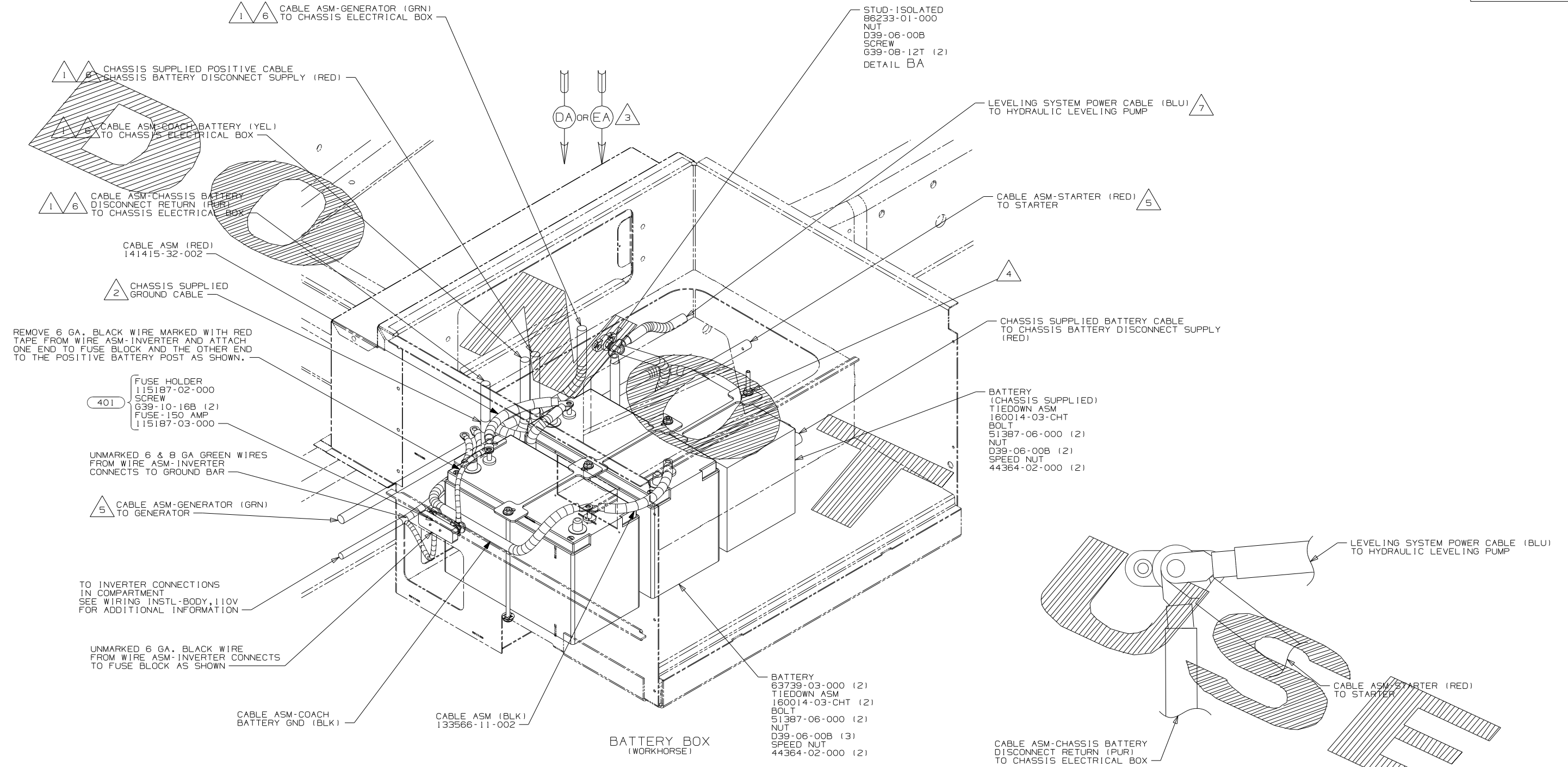
DANGER

Danger of electrical shock, burns or death. Always remove all power sources before attempting any repair, service or diagnostic work. Power can be present from shore power, generator, inverter or battery. All power sources must be disabled and secured before performing any service.



CAUTION

If you lack the skills, tools or equipment to perform diagnostic or repair work leave such work to an authorized Winnebago Industries dealer or other qualified shop.



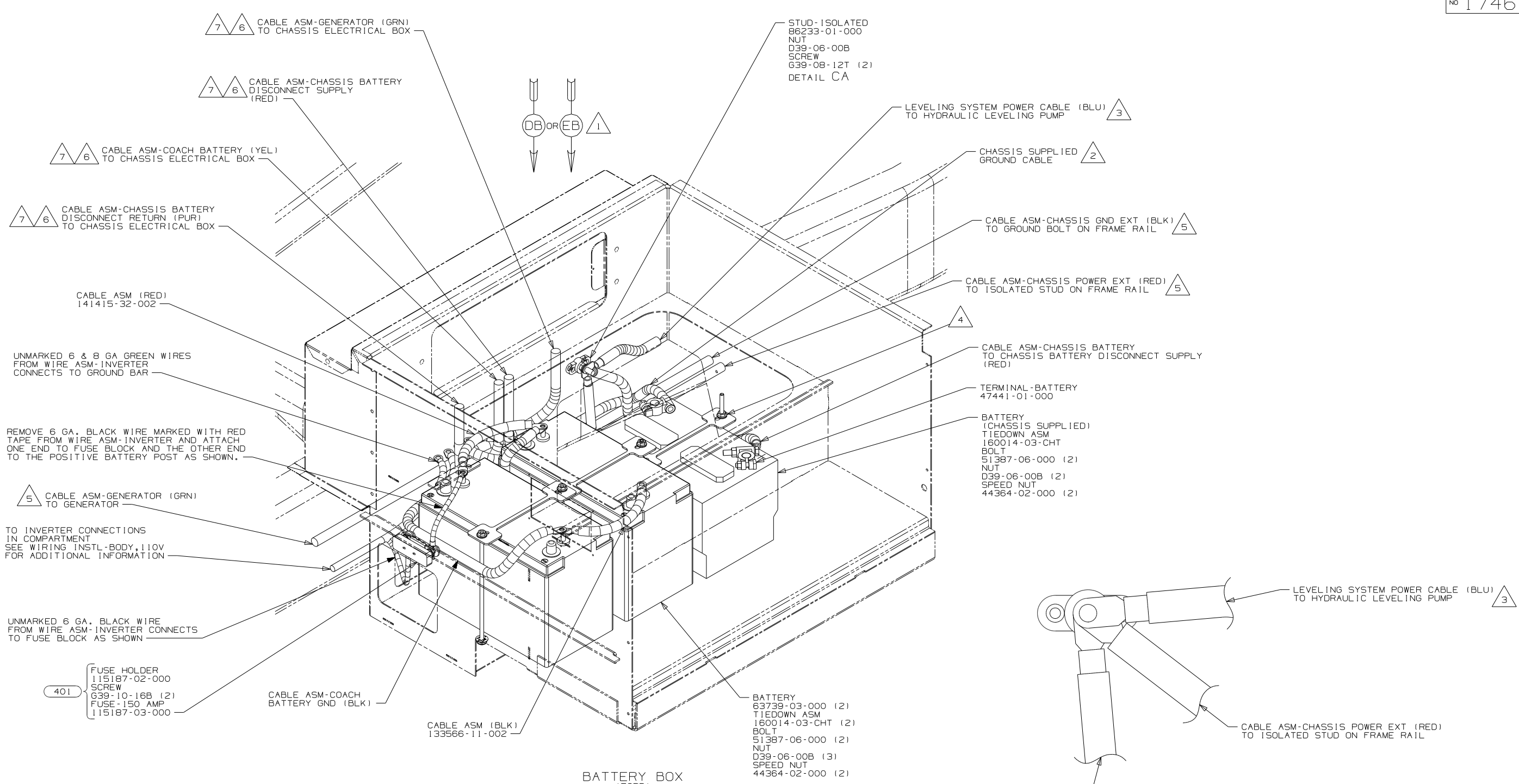
- NOTES:
- 7** SEE LEVELING SYSTEM INSTL FOR ADDITIONAL INFORMATION.
 - 6** SEE CHASSIS ELECTRICAL BOX ASM FOR ADDITIONAL INFORMATION.
 - 5** SEE WIRING INSTL-CHASSIS FOR ADDITIONAL INFORMATION.
 - 4** USE TWO NUTS HERE TO ACCOUNT FOR BATTERY HEIGHT DIFFERENCE.
 - 3** USED ON J32H, J35P, & J37F.
 - 2** LOCATE CHASSIS SUPPLIED CABLE REDUCE CABLE TO 700MM AND ADD TERMINAL 8348-01-000 TO THE CUT END.
 - 1** CABLE WILL BE ROUTED TO THE RIGHT SIDE OF STEP BOX ON THE F32H. SEE SHT.5

- 401** INVERTER-DC/AC, 1000 WATT
- 265** CODES/STANDARDS-CSA/CMVSS
- 1B1** CODES/STANDARDS USA

| | |
|----------------------|----------------|
| FIRST USED | |
| 11 J-SERIES | |
| DO NOT SCALE DRAWING | |
| TITLE: BATTERY INSTL | |
| SHEET 2 | PART NO 174676 |

FOR ELECTRICAL
TORQUE
SPECIFICATIONS
SEE DWG NO.
128783-01-000

FOR
ELECTRICAL
CALLOUTS
SEE DWG NO.
121339-01-000



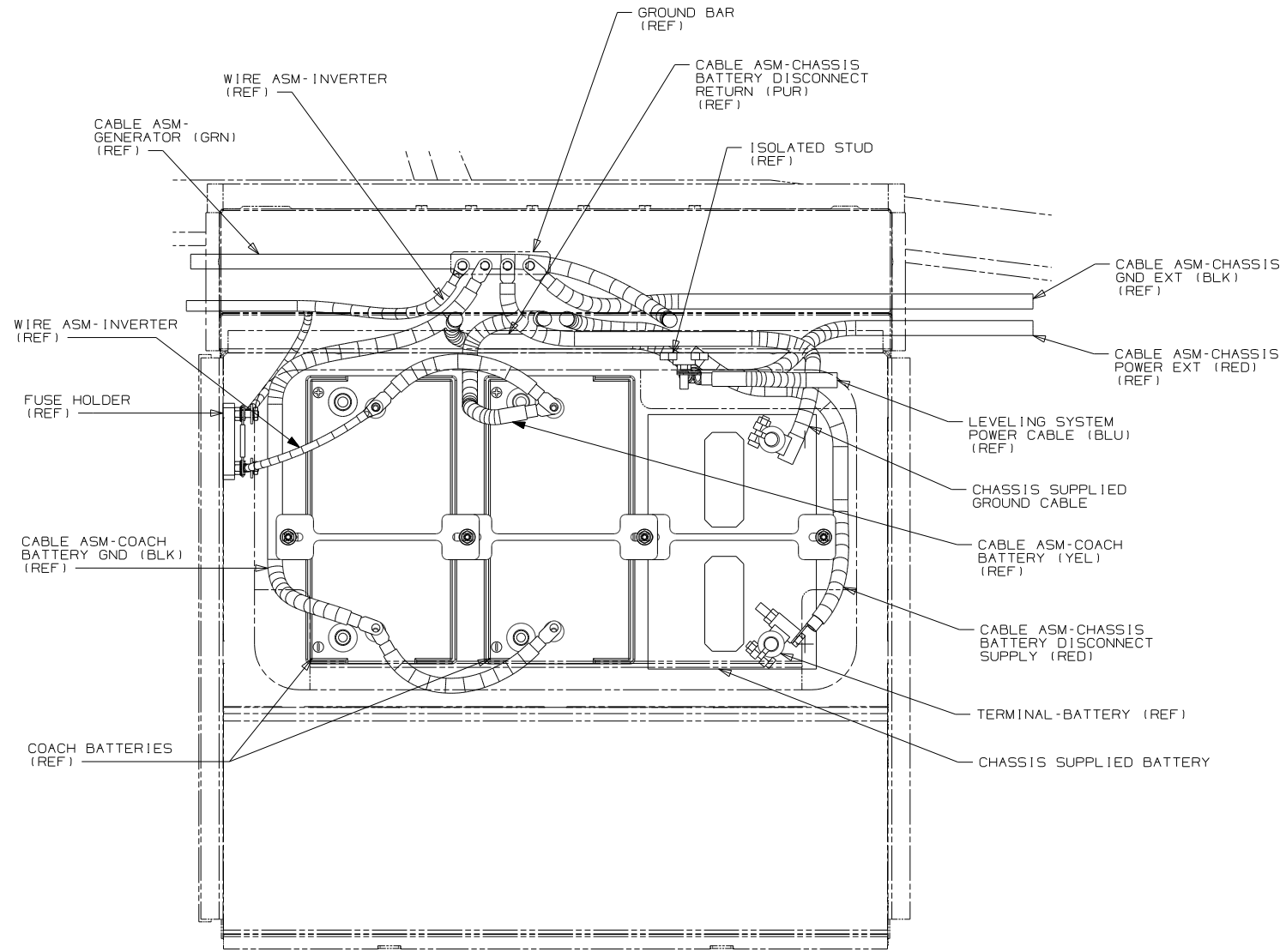
- NOTES:**
- 7** CABLE WILL BE ROUTED TO THE RIGHT SIDE OF STEP BOX ON THE F32H. SEE SHT.5
 - 6** SEE CHASSIS ELECTRICAL BOX ASM FOR ADDITIONAL INFORMATION.
 - 5** SEE WIRING INSTL-CHASSIS FOR ADDITIONAL INFORMATION.
 - 4** USE TWO NUTS HERE TO ACCOUNT FOR BATTERY HEIGHT DIFFERENCE.
 - 3** SEE LEVELING SYSTEM INSTL FOR ADDITIONAL INFORMATION.
 - 2** LOCATE CHASSIS SUPPLIED GROUND WIRES TO CABLE, AND REDUCE LENGTH TO 700MM AND ADD TERMINAL 8348-01-000 TO THE CUT END.
 - 1** USED ON J32H, J35P, & J37F.

FOR ELECTRICAL TORQUE SPECIFICATIONS SEE DWG NO. 128783-01-000

FOR ELECTRICAL CALLOUTS SEE DWG NO. 121339-01-000

- 401** INVERTER-DC/AC, 1000 WATT
- 265** CODES/STANDARDS-CSA/CMVSS
- 1B1** CODES/STANDARDS USA

| | | | |
|------------|---------|----------------------|-----|
| FIRST USED | | 11 J-SERIES | |
| | | DO NOT SCALE DRAWING | |
| TITLE: | | BATTERY INSTL | |
| SHEET 3 | PART NO | 174676 | REV |



VIEW DB
(FORD)

265 CODES/STANDARDS-CSA/CMVSS

1B1 CODES/STANDARDS USA

1B1 265

11 J-SERIES

DO NOT SCALE DRAWING

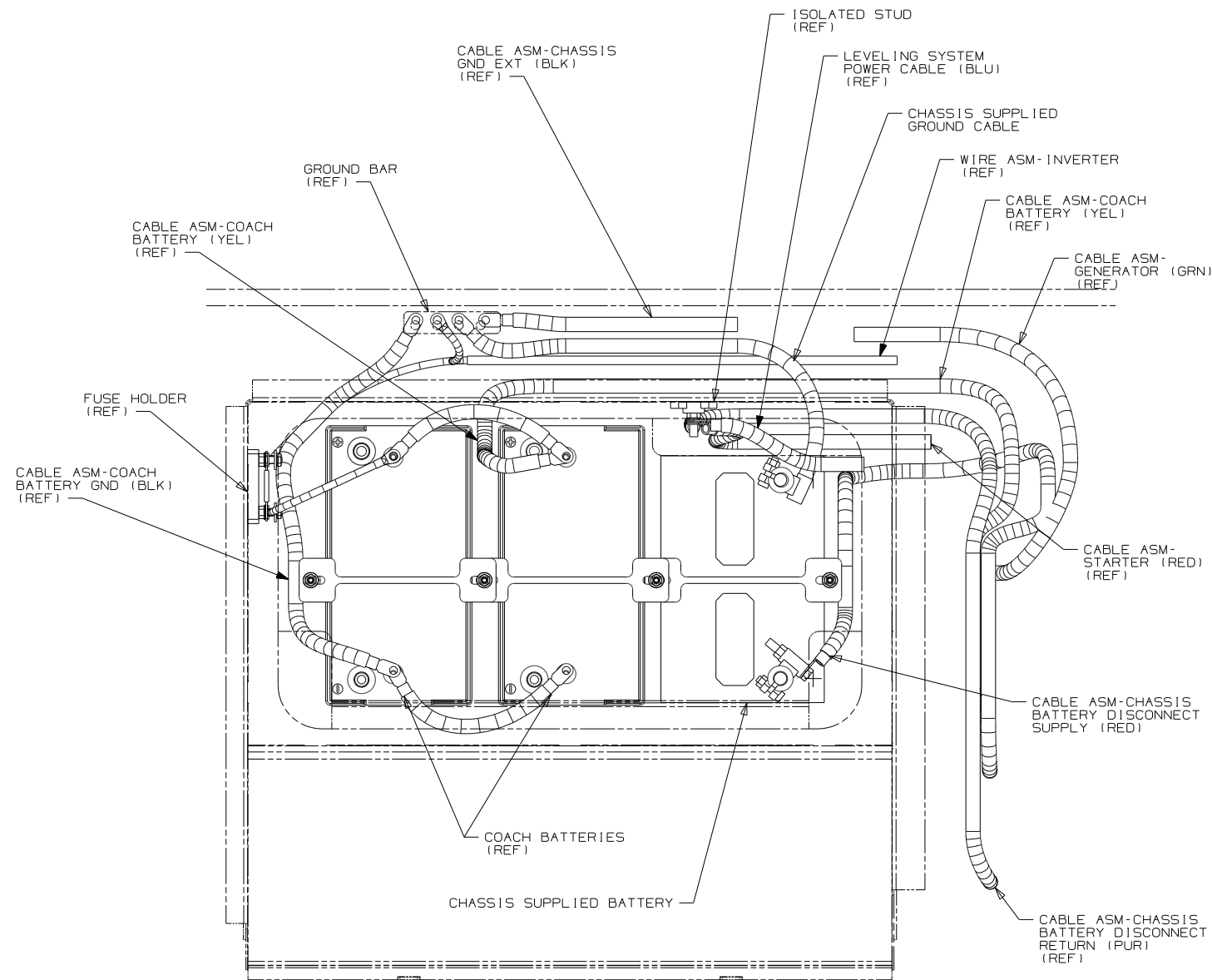
TITLE: BATTERY INSTL

SHEET 4 PART NO 174676 REV

1 3/21/2011

FOR ELECTRICAL
TORQUE
SPECIFICATIONS
SEE DWG NO.
128783-01-000

FOR ELECTRICAL
CALLOUTS
SEE DWG NO.
121339-01-000



VIEW EB
(FORD)

265 CODES/STANDARDS-CSA/CMVSS

1B1 CODES/STANDARDS USA

1B1 265

| | | |
|----------------------|----------------|-----|
| 11 J-SERIES | | |
| DO NOT SCALE DRAWING | | |
| TITLE: BATTERY INSTL | | |
| SHEET 5 | PART NO 174676 | REV |

FOR ELECTRICAL
TORQUE
SPECIFICATIONS
SEE DWG NO.
128783-01-000

FOR
ELECTRICAL
CALLOUTS
SEE DWG NO.
121339-01-000