



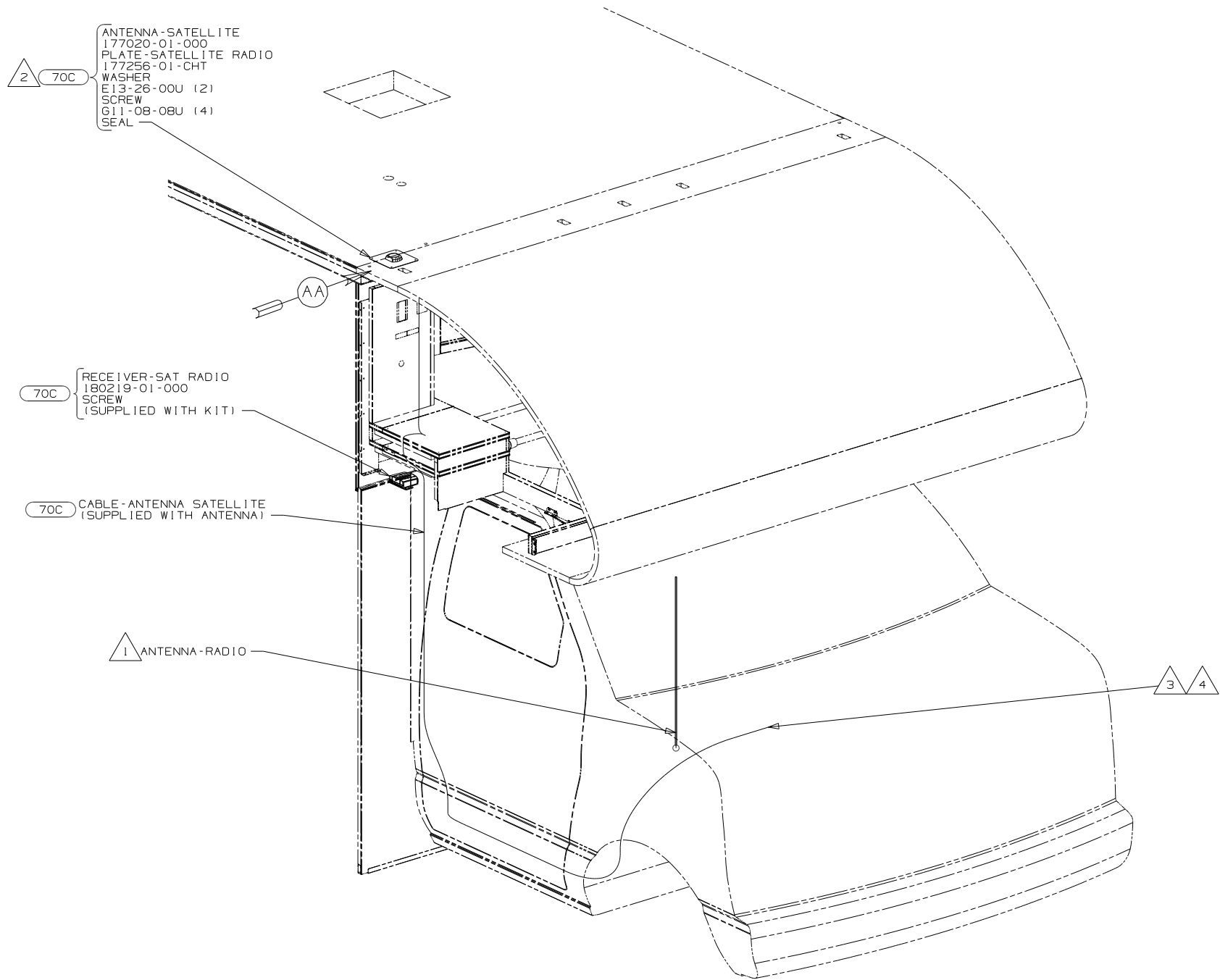
Danger of electrical shock, burns or death. Always remove all power sources before attempting any repair, service or diagnostic work. Power can be present from shore power, generator, inverter or battery. All power sources must be disabled and secured before performing any service.



If you lack the skills, tools or equipment to perform diagnostic or repair work leave such work to an authorized Winnebago Industries dealer or other qualified shop.

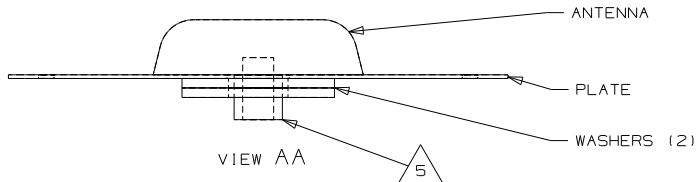
DRAWING NO.	SHEET	SERIES
174639-01	1	200
174639-02	2	500
174639-03	3	700
174639-04	4	D,E,J
174639-05	5	P,R
174639-06	6	H

RELEASE	REV DATE A	DWG NO 174639
REV ZONE	REVISION RECORD	DATE DFTR-ORIG



- 5 USE NUT AND STAR WASHER SUPPLIED WITH ANTENNA TO ATTACH TO PLATE.
- 4 ROUTE CABLE FROM RADIO TO PASSENGER'S STEPWELL AREA, UP B-POST, INTO WINGWALL, THROUGH SLEEP BOARD ASM, TO ENTERTAINMENT CENTER.
- 3 RECEIVER CABLE SUPPLIED WITH RECEIVER.
- 2 MOUNT ANTENNA SUCH THAT BASE IS SQUARE WITH ROOF AND HOLE IS DIRECTLY OVER HOLE IN ROOF. SEAL BOTH THE HOLE IN THE ROOF AND ANTENNA BASE AT SCREWS.
- 1 SUPPLIED WITH CHASSIS. USE SHORTEST SUPPLIED ANTENNA.

NOTES:

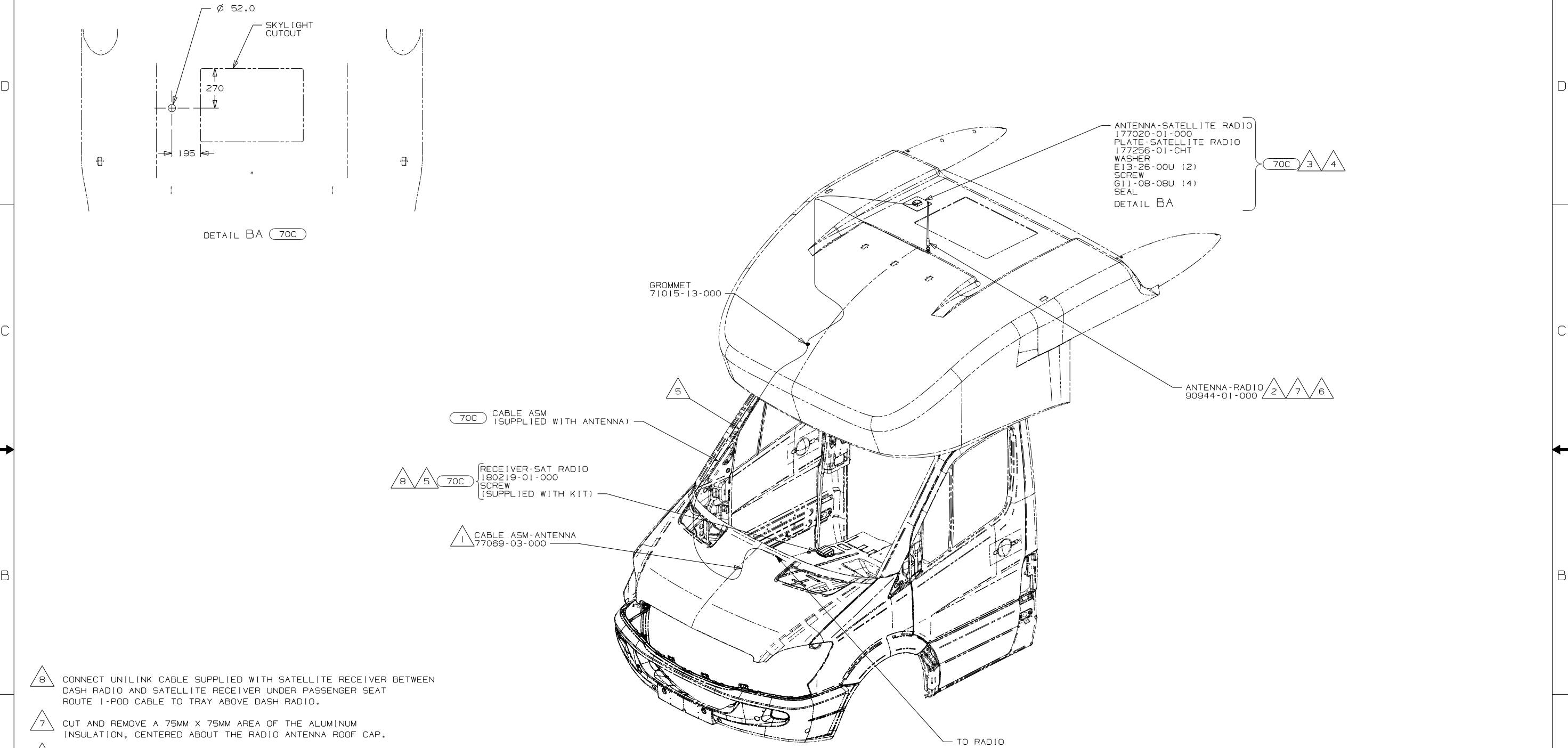


FOR ELECTRICAL
TORQUE
SPECIFICATIONS
SEE DWG NO.
128783-01-000

FOR
ELECTRICAL
CALLOUTS
SEE DWG NO.
121339-01-000

- 70C RADIO - SATELLITE
- 265 CODES/STANDARDS-CSA/CMVSS
- 1B1 CODES/STANDARDS USA
- 1B1 265

WINNEBAGO		COPYRIGHT 2011 WINNEBAGO INDUSTRIES, INC.	
DFTR	ORIG. DATE		
CHKR	ALL DIMENSIONS ARE IN MILLIMETERS		
P.E.	M.E.		
DSNR	FIRST USED		
UNSPECIFIED TOLERANCES ARE:		MATERIAL:	
HOLE DIM (X)		:	
ONE-PLACE (X,X)		:	
TWO-PLACE (X,XX)		:	
ANGLE		:	
THIRD ANGLE PROJECTION			
DO NOT SCALE DRAWING			
TITLE: ANTENNA INSTL-RADIO AND CB			
SHEET 1 of 6		PART NO 174639	
REF:		1 5/31/2011	



- 8 CONNECT UNILINK CABLE SUPPLIED WITH SATELLITE RECEIVER BETWEEN DASH RADIO AND SATELLITE RECEIVER UNDER PASSENGER SEAT ROUTE 1-POD CABLE TO TRAY ABOVE DASH RADIO.
- 7 CUT AND REMOVE A 75MM X 75MM AREA OF THE ALUMINUM INSULATION, CENTERED ABOUT THE RADIO ANTENNA ROOF CAP.
- 6 REMOVE AND REINSTALL AFTER PAINT.
- 5 ROUTE SATELLITE RADIO ANTENNA CABLE FROM THE DASH UP A-PILLAR TO ROOF CAP.
- 4 SEE WIRING INSTL-CHASSIS FOR ADDITIONAL INFORMATION.
- 3 MOUNT ANTENNA SUCH THAT BASE IS SQUARE W/REAR OF ROOF CAP & CENTER HOLE OF ANTENNA DIRECTLY OVER HOLE IN FIBERGLASS. SEAL HOLE, BASE, AND SCREWS.
- 2 SEAL AROUND ANTENNA BASE.
- 1 ROUTE RADIO ANTENNA CABLE FROM DASH RADIO UNDER DASH UP PASSENGER SIDE A-PILLAR TO ROOF CAP.

NOTES:

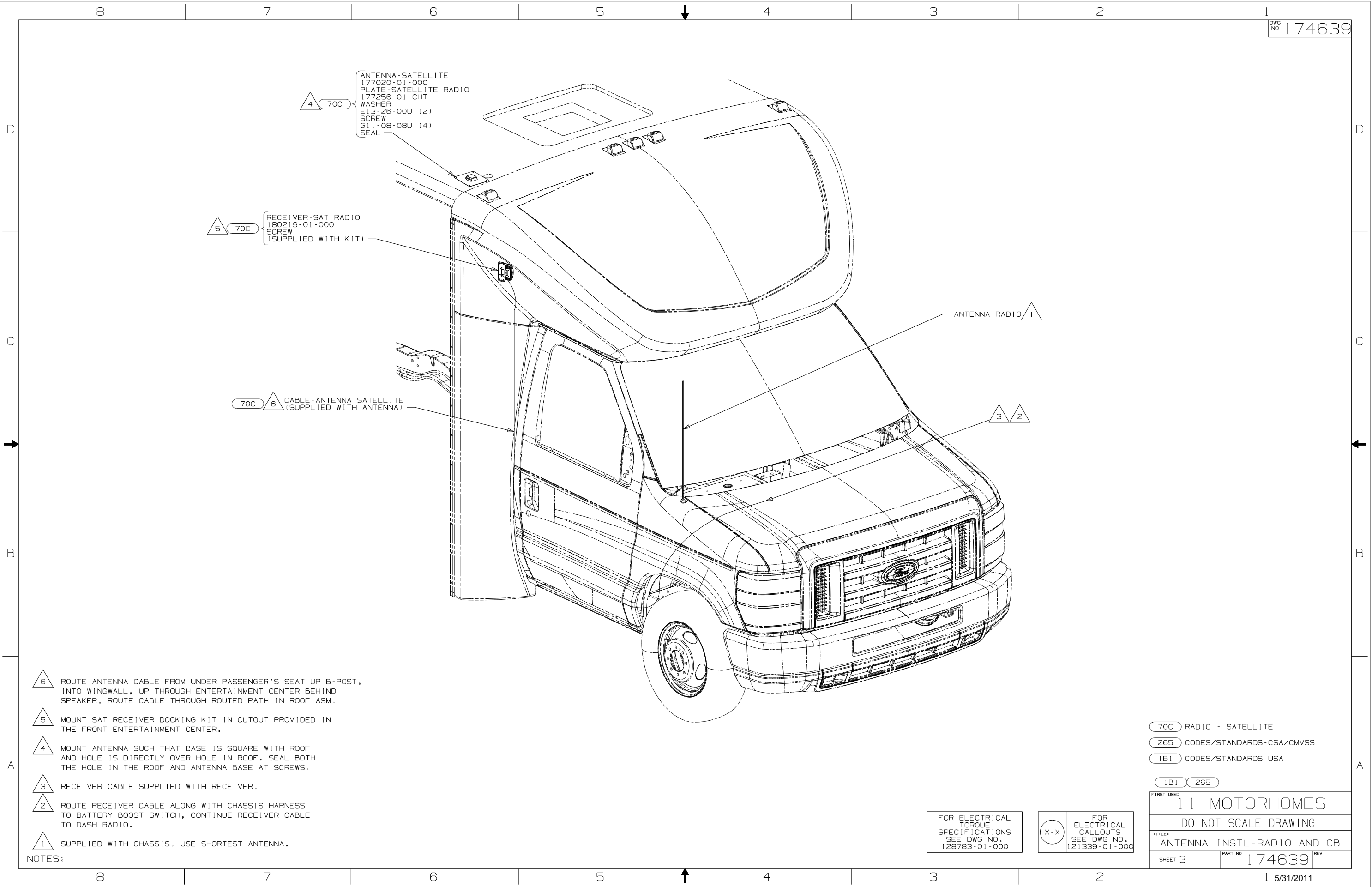
FOR ELECTRICAL
TORQUE
SPECIFICATIONS
SEE DWG NO.
128783-01-000

FOR
ELECTRICAL
CALLOUTS
SEE DWG NO.
121339-01-000

70C RADIO - SATELLITE
265 CODES/STANDARDS-CSA/CMVSS
1B1 CODES/STANDARDS USA

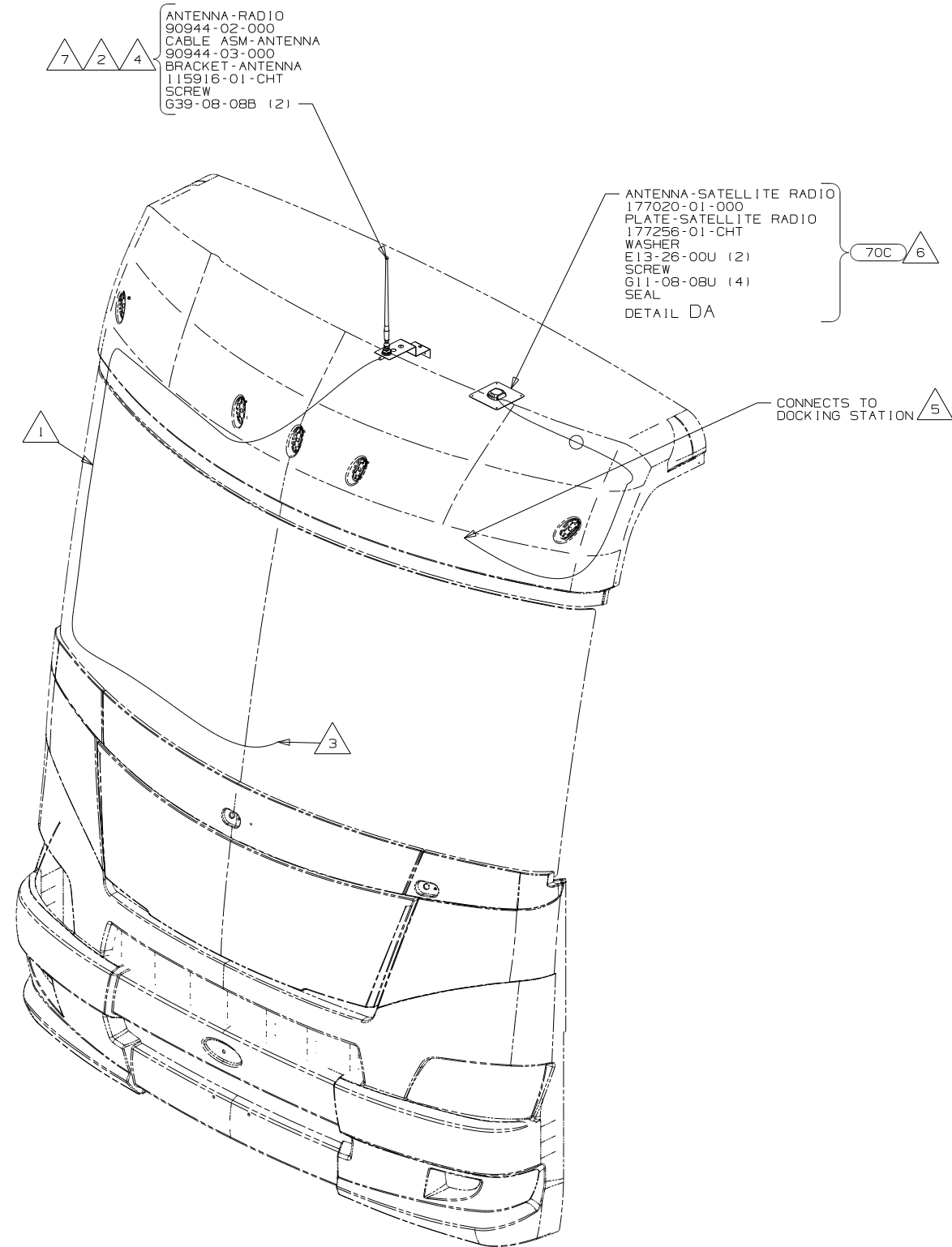
1B1 265

11 MOTORHOMES		
DO NOT SCALE DRAWING		
TITLE: ANTENNA INSTL-RADIO AND CB		
SHEET 2	PART NO 174639	REV



- △ 6 ROUTE ANTENNA CABLE FROM UNDER PASSENGER'S SEAT UP B-POST, INTO WINGWALL, UP THROUGH ENTERTAINMENT CENTER BEHIND SPEAKER, ROUTE CABLE THROUGH ROUTED PATH IN ROOF ASM.
- △ 5 MOUNT SAT RECEIVER DOCKING KIT IN CUTOUT PROVIDED IN THE FRONT ENTERTAINMENT CENTER.
- △ 4 MOUNT ANTENNA SUCH THAT BASE IS SQUARE WITH ROOF AND HOLE IS DIRECTLY OVER HOLE IN ROOF. SEAL BOTH THE HOLE IN THE ROOF AND ANTENNA BASE AT SCREWS.
- △ 3 RECEIVER CABLE SUPPLIED WITH RECEIVER.
- △ 2 ROUTE RECEIVER CABLE ALONG WITH CHASSIS HARNESS TO BATTERY BOOST SWITCH, CONTINUE RECEIVER CABLE TO DASH RADIO.
- △ 1 SUPPLIED WITH CHASSIS. USE SHORTEST ANTENNA.

NOTES:



- 7 REMOVE AND REINSTALL AFTER PAINT.
- 6 MOUNT ANTENNA SUCH THAT BASE IS SQUARE W/REAR OF ROOF CAP & HOLE IS DIRECTLY OVER HOLE IN FIBERGLASS. SEAL HOLE IN ROOF CAP, BASE AT SCREWS.
- 5 SEE WIRING INSTL-FRONT END FOR ADDITIONAL INFORMATION.
- 4 USE HOLE IN BRACKET AS GUIDE TO DRILL 13 DIAMETER HOLE IN FIBERGLASS.
- 3 TO RADIO.
- 2 SEAL AROUND ANTENNA BASE.
- 1 ROUTE CABLE ALONG A-POST, UNDER TRIM COVER.

NOTES:

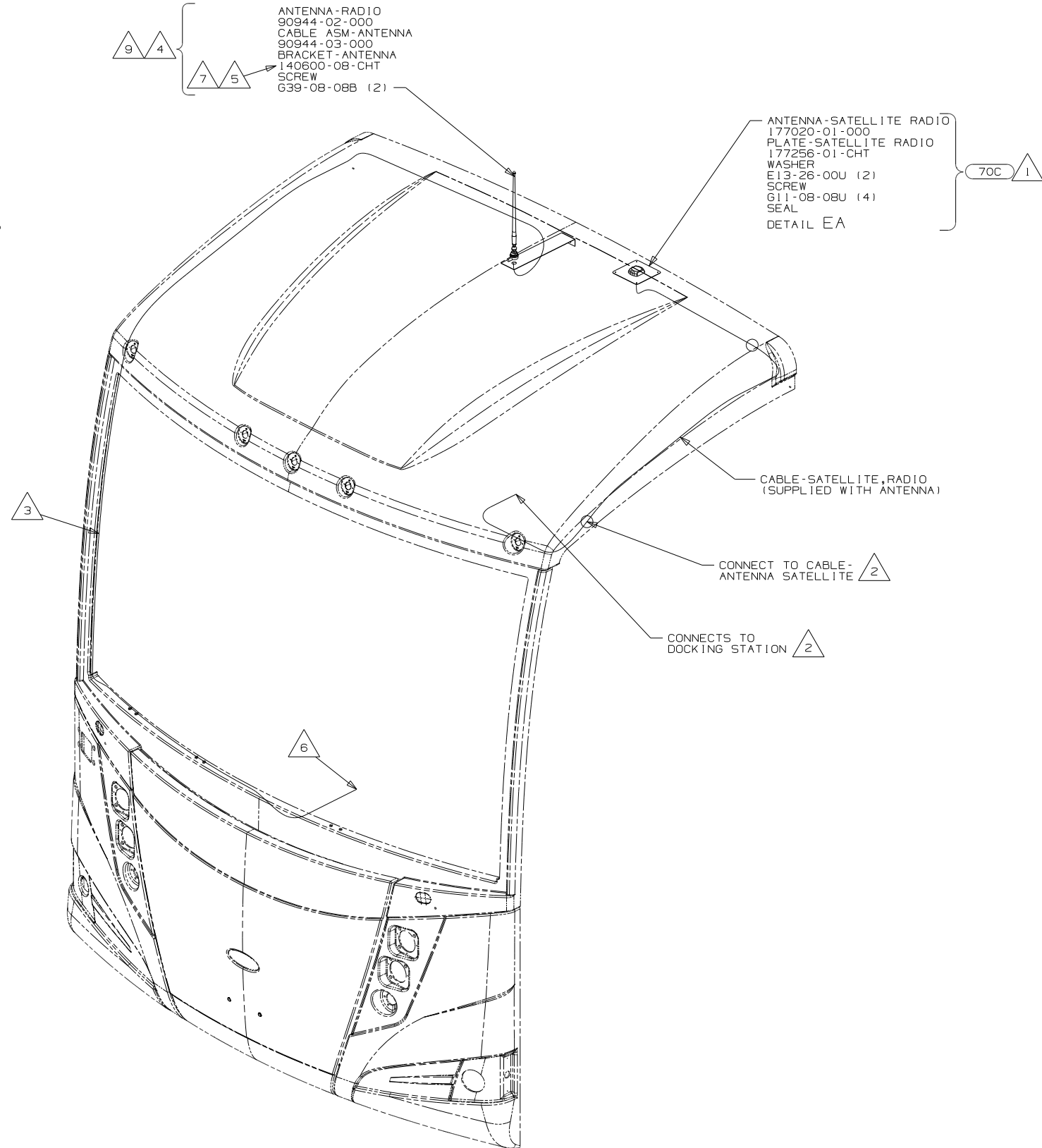
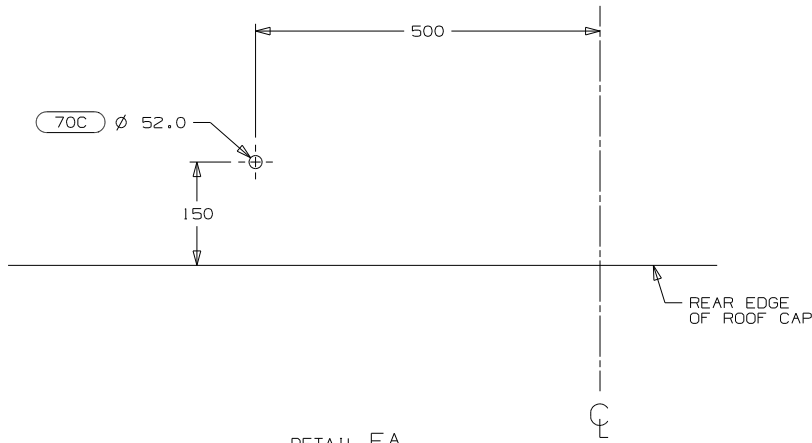
FOR ELECTRICAL
TORQUE
SPECIFICATIONS
SEE DWG NO.
128783-01-000

FOR
ELECTRICAL
CALLOUTS
SEE DWG NO.
121339-01-000

70C RADIO - SATELLITE
265 CODES/STANDARDS-CSA/CMVSS
1B1 CODES/STANDARDS USA

1B1 265

11 MOTORHOMES		
DO NOT SCALE DRAWING		
TITLE: ANTENNA INSTL-RADIO AND CB		
SHEET 4	PART NO 174639	REV



- 9 REMOVE AND REINSTALL AFTER PAINT.
- 8 CLEAN ROOF, ANTENNA BASE, & ANTENNA AND USE TAPE-FOAM,DBL 76322-05 TO ATTACH ANTENNA BASE & ANTENNA. MOUNT ANTENNA SUCH THAT BASE IS SQUARE WITH REAR OF ROOF CAP.
- 7 USE HOLE IN BRACKET AS GUIDE TO DRILL 13 DIAMETER HOLE IN FIBERGLASS.
- 6 TO RADIO
- 5 USED ON P&R SERIES.
- 4 SEAL AROUND ANTENNA BASE.
- 3 ROUTE CABLE ALONG A-POST,UNDER TRIM COVER.
- 2 SEE WIRING INSTL-FRONT END FOR ADDITIONAL INFORMATION.
- 1 MOUNT ANTENNA SUCH THAT BASE IS SQUARE W/REAR OF ROOF CAP & HOLE IS DIRECTLY OVER HOLE IN FIBERGLASS. SEAL HOLE IN ROOF CAP, BASE AT SCREWS.

NOTES:

FOR ELECTRICAL
TORQUE
SPECIFICATIONS
SEE DWG NO.
128783-01-000

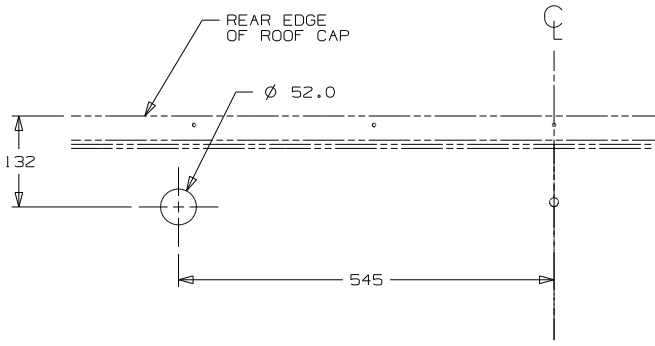
FOR
ELECTRICAL
CALLOUTS
SEE DWG NO.
121339-01-000

70C RADIO - SATELLITE

265 CODES/STANDARDS-CSA/CMVSS

1B1 CODES/STANDARDS USA

FIRST USED 11 MOTORHOMES		
DO NOT SCALE DRAWING		
TITLE: ANTENNA INSTL-RADIO AND CB		
SHEET 5	PART NO 174639	REV



DETAIL FA 70C

- ANTENNA-SATELLITE RADIO 177020-01-000
- PLATE-SATELLITE RADIO 177256-01-CHT
- WASHER E13-26-00U (2)
- SCREW G11-08-08U (4)
- SEAL
- DETAIL FA

70C 3 4

- ANTENNA-RADIO 90944-01-000

2 7 10

- 70C CABLE ASM-SAT (SUPPLIED WITH ANTENNA)

8 6 5 70C

- RECEIVER-SAT RADIO 163142-20-000
- DOCKING KIT 163142-17-000
- SCREW (SUPPLIED WITH DOCKING KIT)

TO RADIO

- CABLE ASM-ANTENNA (REF)

1 9

- 10 REMOVE AND REINSTALL AFTER PAINT.
- 9 CABLE IS INTEGRATED INTO WIRE ASM-IP,MAIN.
- 8 CONNECT UNILINK CABLE SUPPLIED WITH SATELLITE RECEIVER BETWEEN DASH RADIO AND SATELLITE RECEIVER DOCKING KIT. ROUTE UNILINK CABLE ALONG WITH RADIO I-POD CABLE TO TRAY ABOVE DASH RADIO.
- 7 CUT AND REMOVE A 75MM X 75MM AREA OF THE ALUMINUM INSULATION, CENTERED ABOUT THE RADIO ANTENNA ROOF CAP.
- 6 MOUNT SAT. RECEIVER DOCKING KIT PEDESTAL MOUNT TO TRAY ABOVE DASH RADIO TOWARDS PASSENGER SIDE.
- 5 ROUTE SATELLITE RADIO ANTENNA CABLE FROM THE DASH UP A-PILLAR TO ROOF CAP.
- 4 SEE WIRING INSTL-CHASSIS FOR ADDITIONAL INFORMATION.
- 3 MOUNT ANTENNA SUCH THAT BASE IS SQUARE W/REAR OF ROOF CAP & CENTER HOLE OF ANTENNA DIRECTLY OVER HOLE IN FIBERGLASS. SEAL HOLE, BASE, AND SCREWS.
- 2 SEAL AROUND ANTENNA BASE.
- 1 ROUTE RADIO ANTENNA CABLE FROM DASH RADIO UNDER DASH UP PASSENGER SIDE A-PILLAR TO ROOF CAP.

NOTES:

H-SERIES

FOR ELECTRICAL TORQUE SPECIFICATIONS SEE DWG NO. 128783-01-000

FOR ELECTRICAL CALLOUTS SEE DWG NO. 121339-01-000

- 70C RADIO - SATELLITE
- 265 CODES/STANDARDS-CSA/CMVSS
- 1B1 CODES/STANDARDS USA

1B1 265

FIRST USED		
11 MOTORHOMES		
DO NOT SCALE DRAWING		
TITLE: ANTENNA INSTL-RADIO AND CB		
SHEET 6	PART NO 174639	REV