



**DANGER**

**Danger of electrical shock, burns or death.** Always remove all power sources before attempting any repair, service or diagnostic work. Power can be present from shore power, generator, inverter or battery. All power sources must be disabled and secured before performing any service.

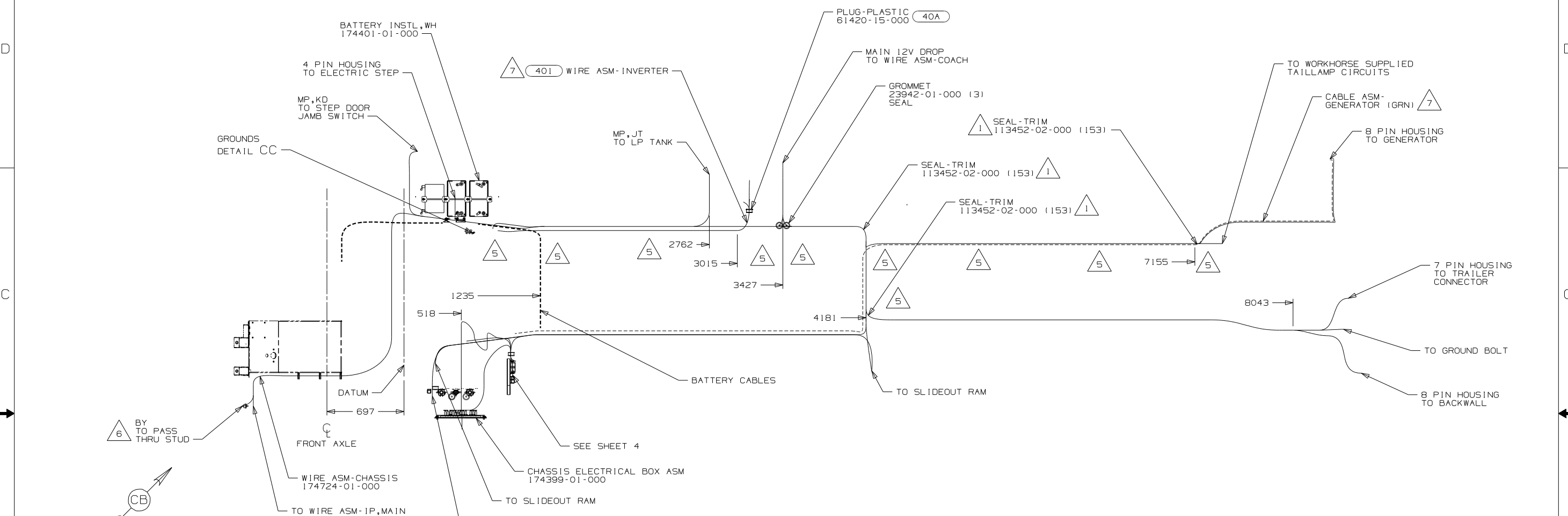


**CAUTION**

If you lack the skills, tools or equipment to perform diagnostic or repair work leave such work to an authorized Winnebago Industries dealer or other qualified shop.

DRAWING NO.	FEATURES
174630-01	(1PR)
174630-02	(16K)

RELEASE	REV DATE	DWG NO	174630
REV ZONE	REVISION RECORD	DATE	DFTR-ORIG



- (401) INVERTER-DC/AC, 1000 WATT
- (40A) INVERTER-DC/AC WITHOUT
- (16K) FORD CHASSIS 22,000
- (1PR) WORKHORSE 22,000# - 19.5 TIRE
- (265) CODES/STANDARDS-CSA/CMVSS
- (1B1) CODES/STANDARDS USA

- NOTES:
- (7) SEE BATTERY INSTL FOR ADDITIONAL INFORMATION.
  - (6) SEE WIRING INSTL-FRONT END FOR ADDITIONAL INFORMATION.
  - (5) CLAMP 83610-01-000, SCREW G11-10-16B.
  - 4. WIRE TIE 8343-04-000. FASTEN EVERY 600MM MINIMUM.
  - 3. ALL DIMENSIONS ARE FROM DATUM UNLESS OTHERWISE SPECIFIED.
  - 2. SECURE CONDUIT 41953, TAB AS REQUIRED, OVER ALL WIRES IN CONTACT WITH SHARP EDGES.
  - (1) COVER SHARP EDGES WHERE WIRE CROSSES FRAME RAILS.

FOR ELECTRICAL TORQUE SPECIFICATIONS SEE DWG NO. 128783-01-000

(X-X) FOR ELECTRICAL CALLOUTS SEE DWG NO. 121339-01-000

**WINNEBAGO** INDUSTRIES, INC. COPYRIGHT 2010

DFTR	ORIG. DATE
CHKR	ALL DIMENSIONS ARE IN MILLIMETERS
P.E.	
M.E.	FIRST USED
DSNR	11 E35F

UNSPECIFIED TOLERANCES ARE:

HOLE DIM (X)	: 3
ONE-PLACE (X.X)	: 1.5
TWO-PLACE (X.XX)	: 0.50
ANGLE	: 1°

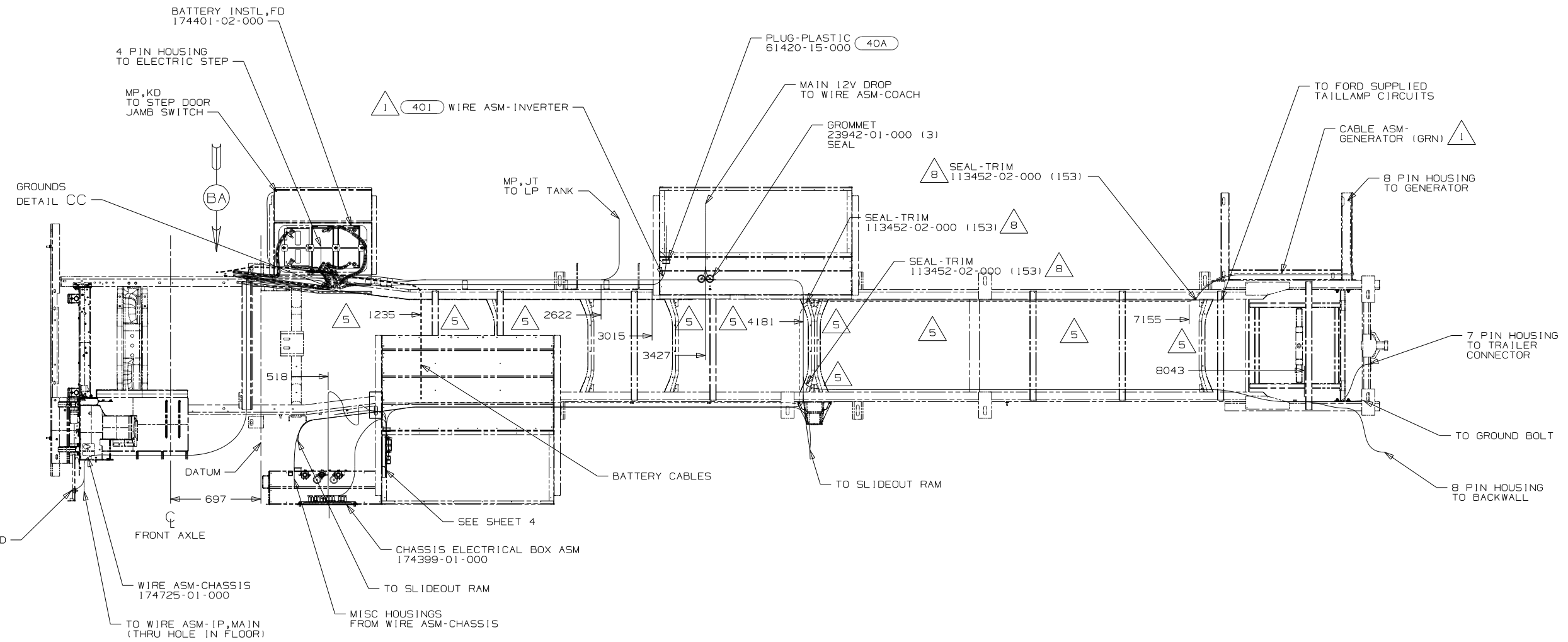
THIRD ANGLE PROJECTION

**DO NOT SCALE DRAWING**

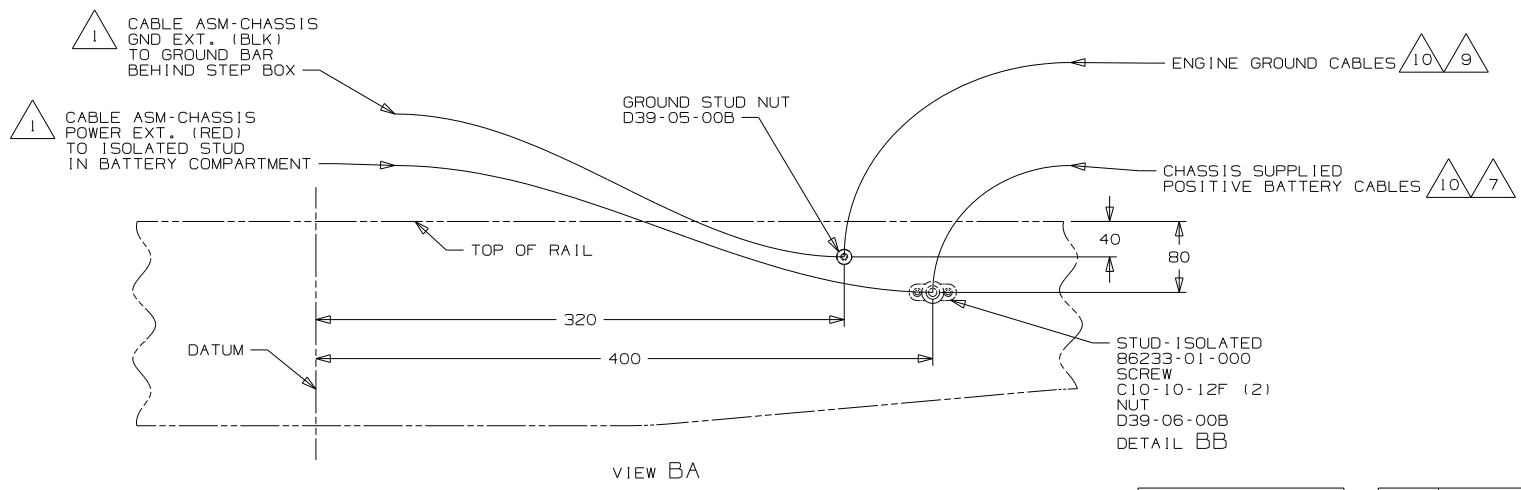
TITLE: **WIRING INSTL-CHASSIS**

SHEET 1 of 4 PART NO 174630 REV

REF: 1/22/2010



- 10 SUPPLIED WITH CHASSIS
  - 9 CUT CHASSIS SUPPLIED BATTERY CABLE 700MM FROM BATTERY TERMINAL AND ADD TERMINAL 8348-01-000 TO CUT END.
  - 8 COVER SHARP EDGES WHERE WIRE CROSSES FRAME RAILS.
  - 7 CUT CHASSIS SUPPLIED POSITIVE BATTERY CABLE 150MM FROM BATTERY TERMINAL END, DISCARD TERMINAL END AND ADD TERMINAL 113738-01-000 TO CUT END. COIL EXCESS ALONG FRAME RAIL JUST BEHIND THE RADIATOR AND TIE UP WITH WIRE TIE 8343-04-000.
  - 6 SEE WIRING INSTL-FRONT END FOR ADDITIONAL INFORMATION.
  - 5 CLAMP 83610-01-000, SCREW G11-10-16B.
4. WIRE TIE 8343-04-000. FASTEN EVERY 600MM MINIMUM.
  3. ALL DIMENSIONS ARE FROM DATUM UNLESS OTHERWISE SPECIFIED.
  2. SECURE CONDUIT 41953, TAB AS REQUIRED, OVER ALL WIRES IN CONTACT WITH SHARP EDGES.
- 1 SEE BATTERY INSTL FOR ADDITIONAL INFORMATION.



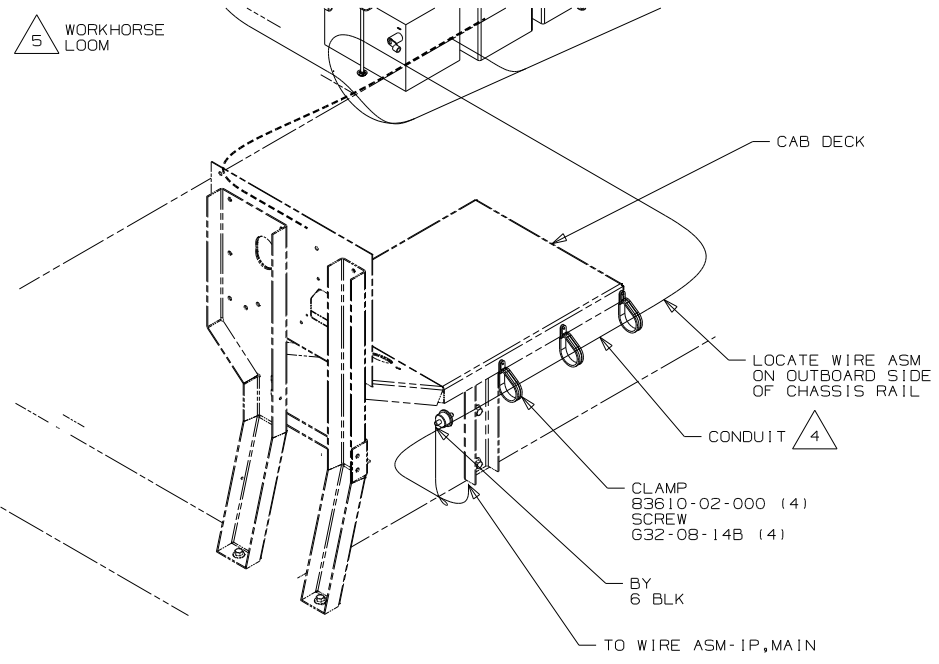
- 401 INVERTER-DC/AC, 1000 WATT
- 40A INVERTER-DC/AC WITHOUT
- 16K FORD CHASSIS 22,000
- 265 CODES/STANDARDS-CSA/CMVSS
- 1B1 CODES/STANDARDS USA

FOR ELECTRICAL TORQUE SPECIFICATIONS SEE DWG NO. 128783-01-000

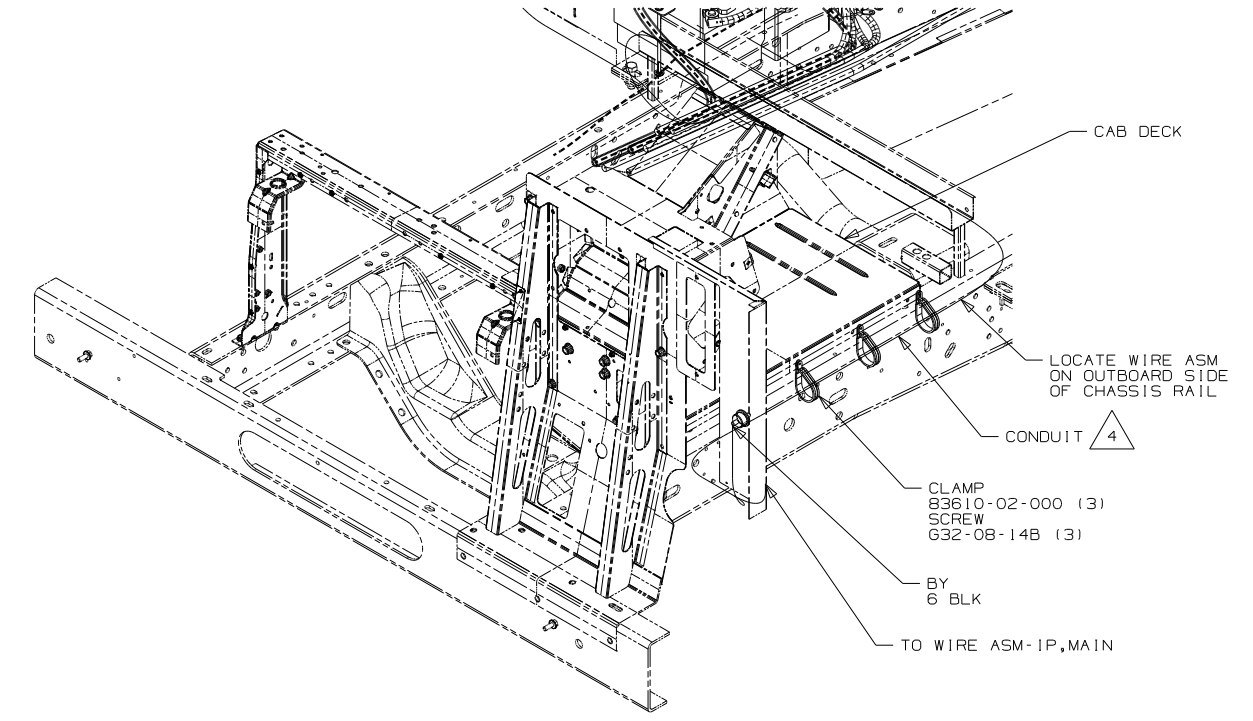
FOR ELECTRICAL CALLOUTS SEE DWG NO. 121339-01-000

FIRST USED	11 E35F
TITLE	DO NOT SCALE DRAWING
TITLE	WIRING INSTL-CHASSIS
SHEET 2	PART NO 174630 REV

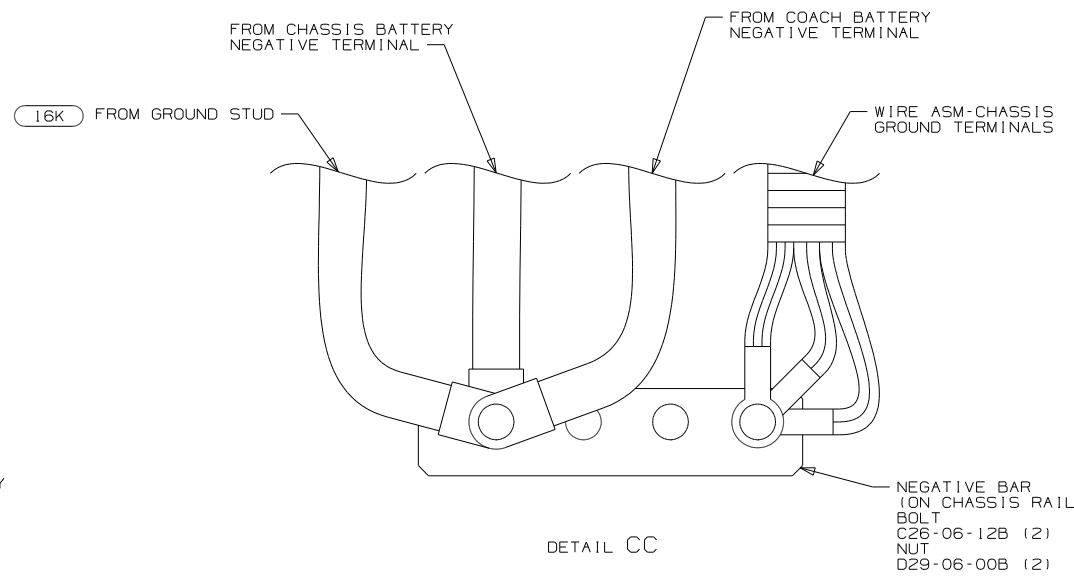
5 WORKHORSE LOOM



VIEW CB (IPR)



VIEW CA (16K)



DETAIL CC

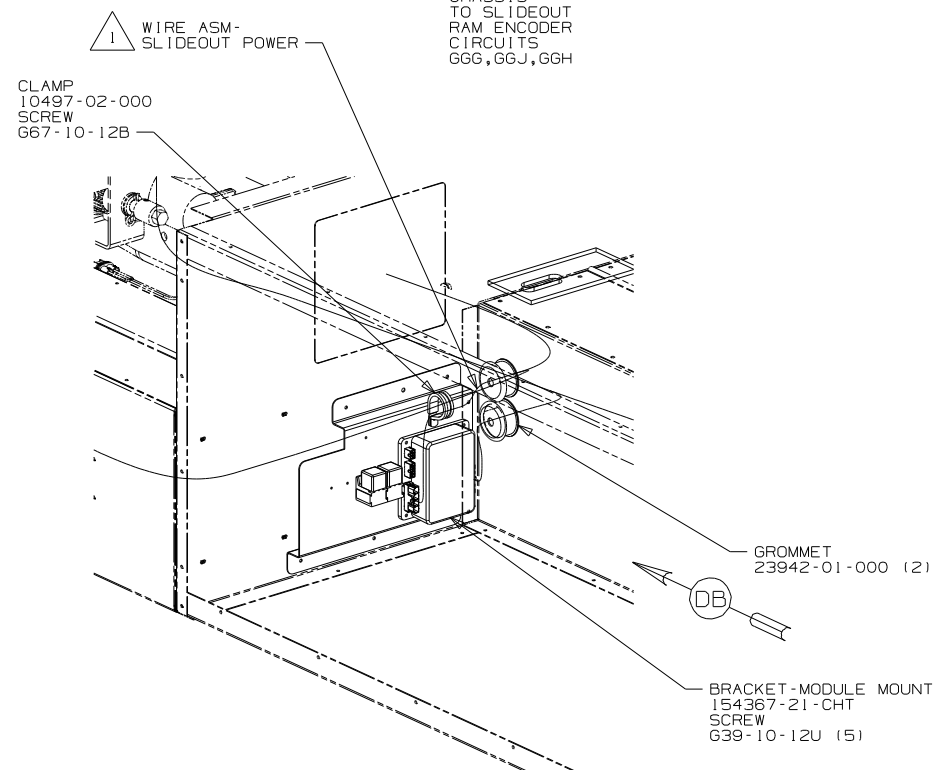
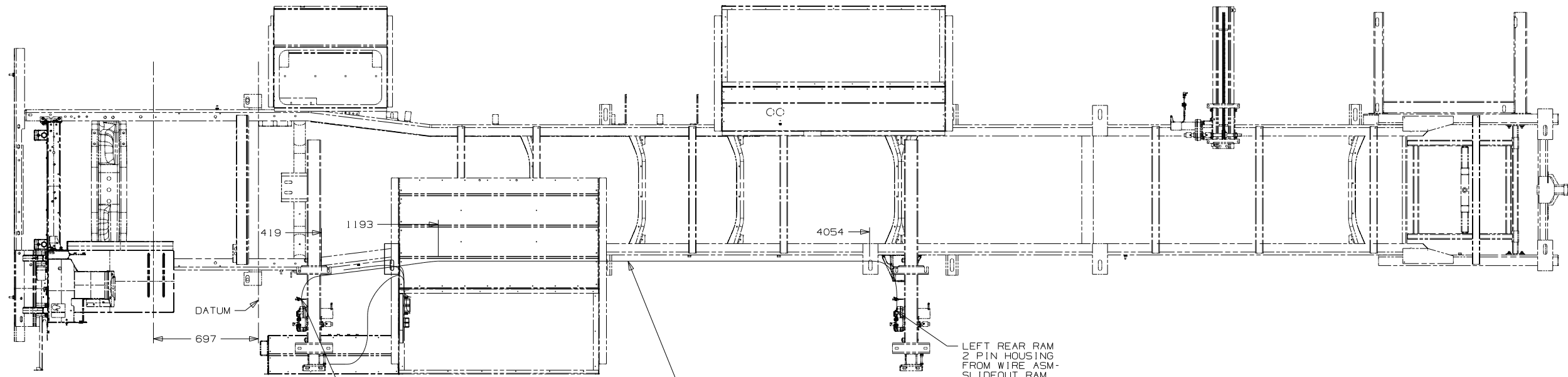
- NOTES:
- 5 CLAMP WORKHORSE ENGINE HARNESS TO CAB DECK TO PROTECT HARNESS FROM DAMAGE.
  - 4 COVER WITH CONDUIT 41953-10-000 AND 41953-11-000 AS REQUIRED.
  - 3. CONNECT CABLES TO COACH SIDE OF BATTERY DISCONNECT WHEN BATTERY DISCONNECT IS USED.
  - 2. ALL GROUND WIRE TO BE COVERED WITH TUBING 8041-02-000.
  - 1. CUT OFF EXCESS END OF WIRE TIE.

- (IPR) WORKHORSE 22,000#-19.5 TIRE
- (16K) FORD CHASSIS 22,000
- (265) CODES/STANDARDS-CSA/CMVSS
- (1B1) CODES/STANDARDS USA

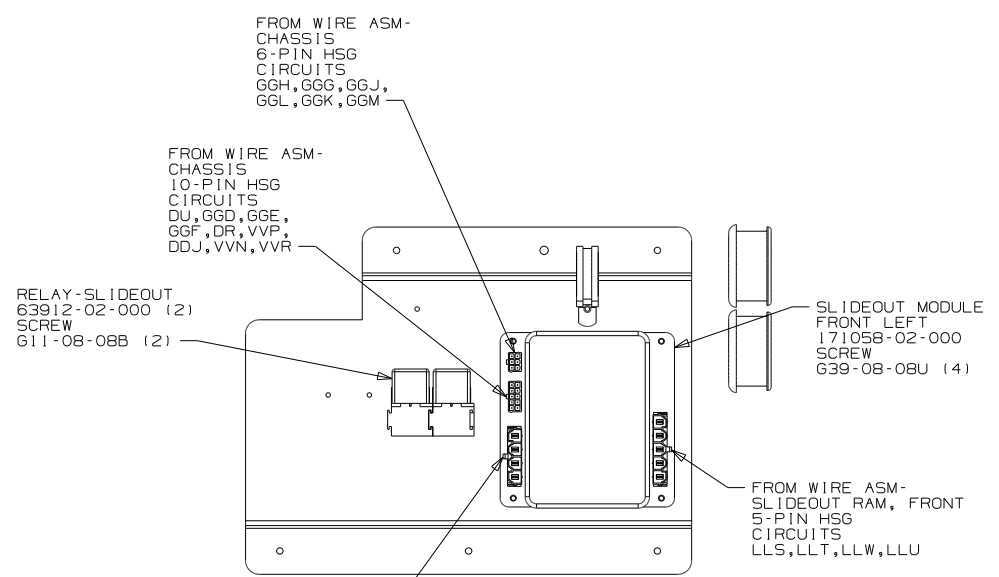
FIRST USED	11 E35F
TITLE	DO NOT SCALE DRAWING
TITLE	WIRING INSTL-CHASSIS
SHEET 3	PART NO 174630 REV

FOR ELECTRICAL TORQUE SPECIFICATIONS SEE DWG NO. 128783-01-000

(X-X) FOR ELECTRICAL CALLOUTS SEE DWG NO. 121339-01-000



VIEW DA



VIEW DB

- 1PR WORKHORSE 22,000#-19.5 TIRE
- 16K FORD CHASSIS 22,000
- 265 CODES/STANDARDS-CSA/CMVSS
- 1B1 CODES/STANDARDS USA

1B1 265 16K 1PR

FIRST USED	11 E35F
TITLE	DO NOT SCALE DRAWING
TITLE	WIRING INSTL-CHASSIS
SHEET 4	PART NO 174630 REV

FOR ELECTRICAL TORQUE SPECIFICATIONS SEE DWG NO. 128783-01-000

X-X FOR ELECTRICAL CALLOUTS SEE DWG NO. 121339-01-000

1 SEE CHASSIS ELECTRICAL BOX ASM FOR ADDITIONAL INFORMATION.