



DANGER

Danger of electrical shock, burns or death. Always remove all power sources before attempting any repair, service or diagnostic work. Power can be present from shore power, generator, inverter or battery. All power sources must be disabled and secured before performing any service.

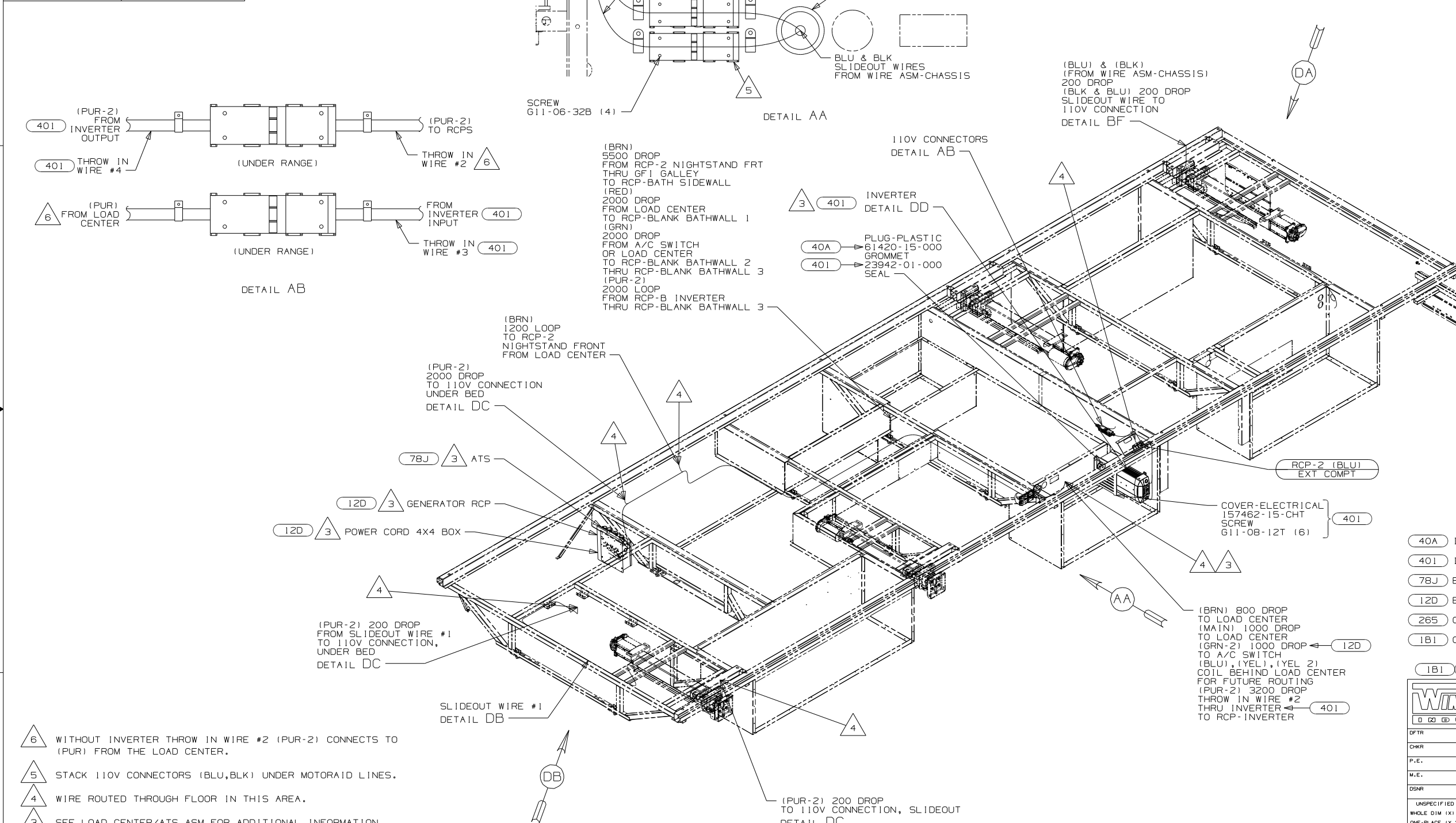


CAUTION

If you lack the skills, tools or equipment to perform diagnostic or repair work leave such work to an authorized Winnebago Industries dealer or other qualified shop.

DRAWING NO.	FEATURE
174375-11	(1B1) (12D)
174375-12	(1B1) (78J)
174375-15	(265) (12D)
174375-16	(265) (78J)

RELEASE	REV DATE	DWG NO	174375
REV ZONE	REVISION RECORD	DATE	01/11/01



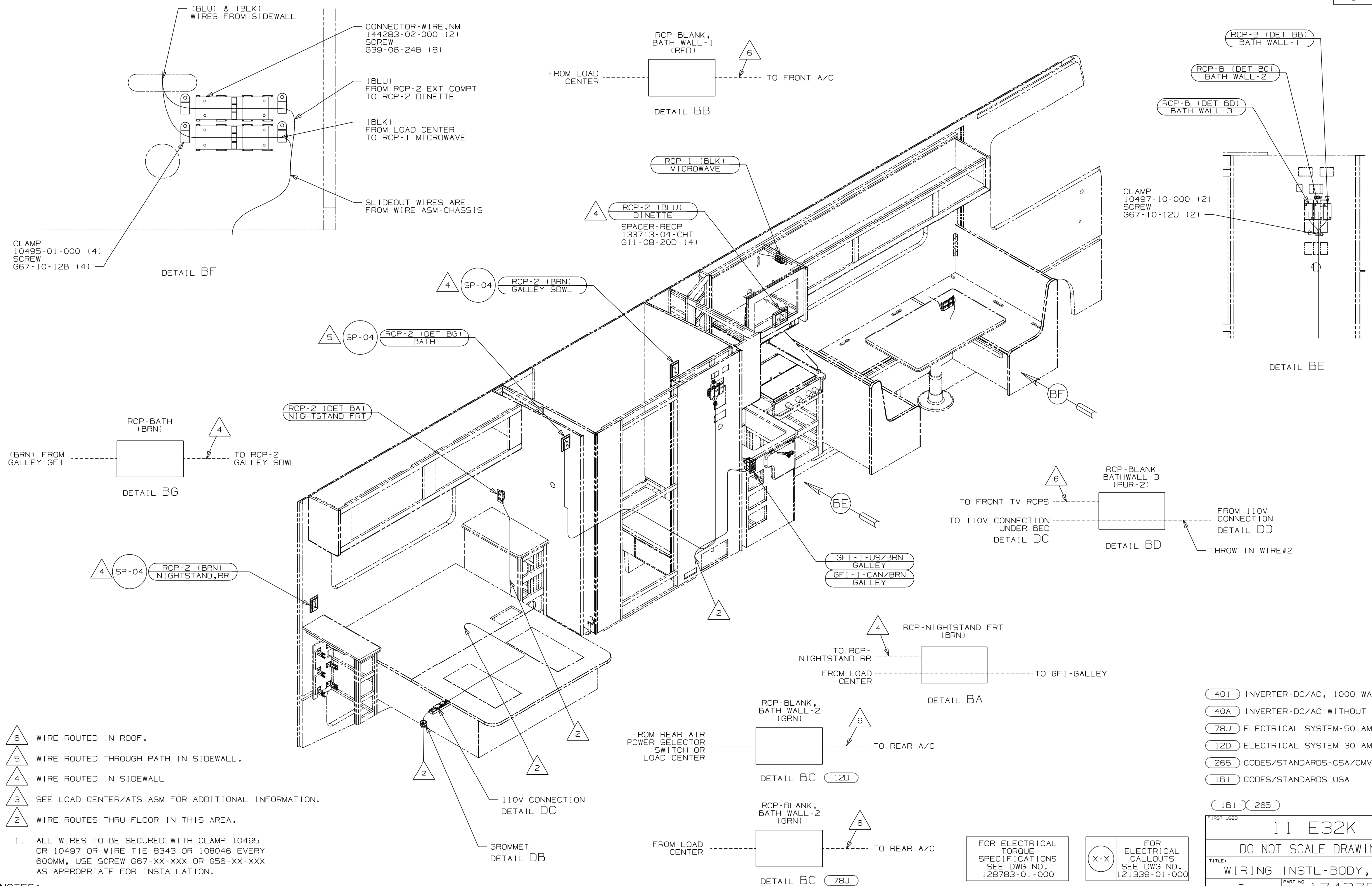
- 6 WITHOUT INVERTER THROW IN WIRE #2 (PUR-2) CONNECTS TO (PUR) FROM THE LOAD CENTER.
- 5 STACK 110V CONNECTORS (BLU,BLK) UNDER MOTORHOLD LINES.
- 4 WIRE ROUTED THROUGH FLOOR IN THIS AREA.
- 3 SEE LOAD CENTER/ATS ASM FOR ADDITIONAL INFORMATION.
2. WIRES ROUTED UNDER FLOOR.
1. ALL WIRES TO BE SECURED WITH CLAMP 10495 OR 10497 OR WIRE TIE 8343 OR 108046 EVERY 600MM, USE SCREW 667-XX-XXX OR 656-XX-XXX AS APPROPRIATE FOR INSTALLATION.

- 40A INVERTER-DC/AC WITHOUT
- 401 INVERTER-DC/AC, 1000 WATT
- 78J ELECTRICAL SYSTEM-50 AMP
- 12D ELECTRICAL SYSTEM 30 AMP
- 265 CODES/STANDARDS-CSA/CMVSS
- 1B1 CODES/STANDARDS USA

WINNEBAGO 0 0 0 0 0 0 0 0 0 0		COPYRIGHT 2010 WINNEBAGO INDUSTRIES, INC.	
DFTR	ORIG. DATE	ALL DIMENSIONS ARE IN MILLIMETERS	
CHKR			
P.E.			
M.E.	FIRST USED	11 E32K	
DSNR			
UNSPECIFIED TOLERANCES ARE: WHOLE DIM (X) ± 3 ONE-PLACE (X.X) ± 1.5 TWO-PLACE (X.XX) ± 0.50 ANGLE ± 1°		MATERIAL: THIRD ANGLE PROJECTION	
DO NOT SCALE DRAWING			
TITLE: WIRING INSTL-BODY, 110V			
SHEET 1 of 4	PART NO	174375	REV
REF:		14/15/2010	

FOR ELECTRICAL TORQUE SPECIFICATIONS SEE DWG NO. 128783-01-000


X-X FOR ELECTRICAL CALLOUTS SEE DWG NO. 121339-01-000

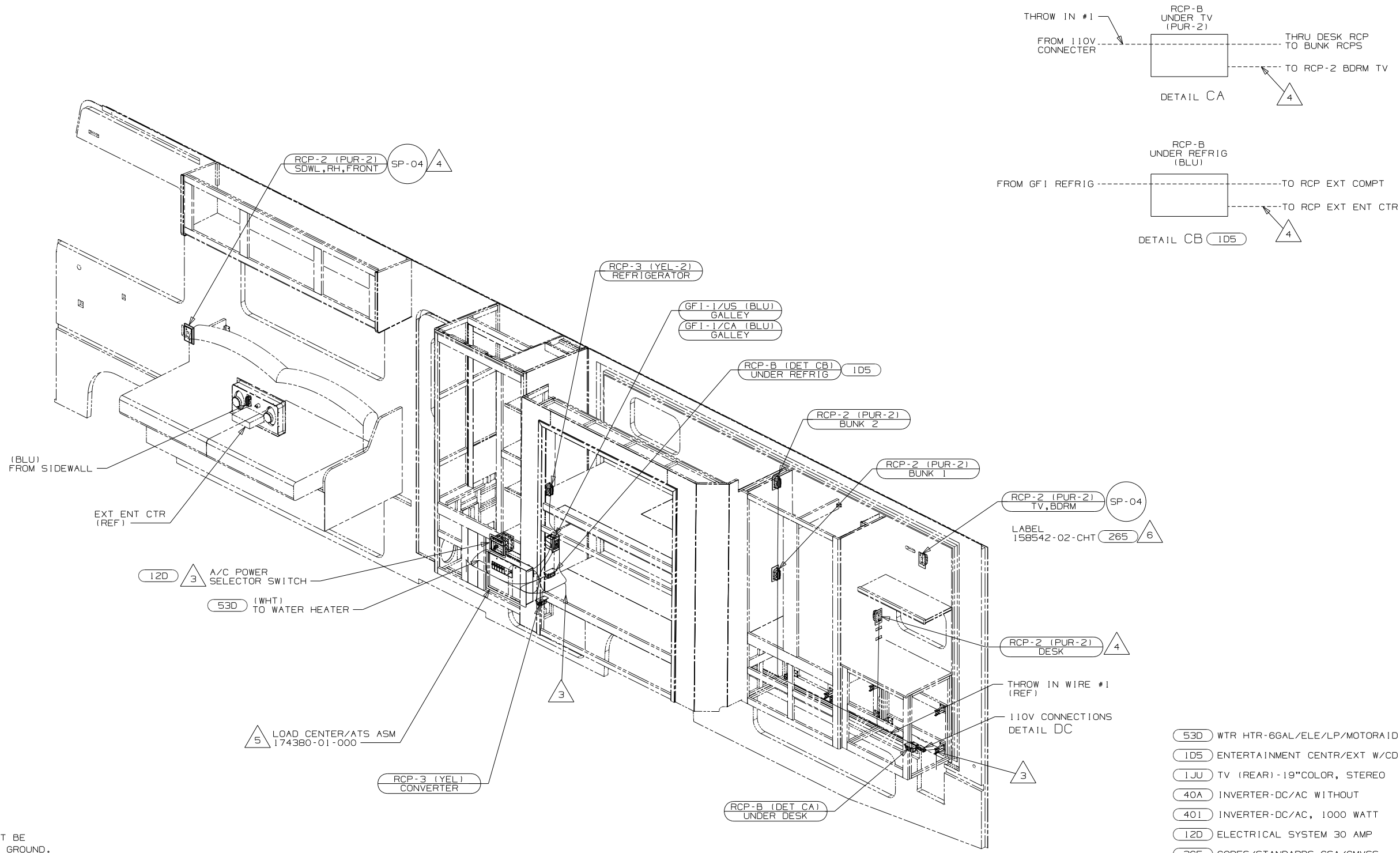


- 40I INVERTER-DC/AC, 1000 WATT
- 40A INVERTER-DC/AC WITHOUT
- 78J ELECTRICAL SYSTEM-50 AMP
- 12D ELECTRICAL SYSTEM 30 AMP
- 265 CODES/STANDARDS-CSA/CMVSS
- 1B1 CODES/STANDARDS USA

1B1		265	
FIRST USED			
11 E32K			
DO NOT SCALE DRAWING			
TITLE:			
WIRING INSTL-BODY, 110V			
SHEET 2		PART NO	REV
		174375	

FOR ELECTRICAL
TORQUE
SPECIFICATIONS
SEE DWG NO.
128783-01-000

	FOR ELECTRICAL CALLOUTS SEE DWG NO. 121339-01-000
---	---



- 6 WITHOUT 1JU
- 5 LOAD CENTER GROUND WIRES MUST BE ATTACHED DIRECTLY TO CHASSIS GROUND.
- 4 WIRE ROUTED IN SIDEWALL.
- 3 WIRES ROUTE THRU FLOOR IN THIS AREA.
- 2 ROUTE WIRE THRU SIDEWALL.

1. ALL WIRES TO BE SECURED WITH CLAMP 10495 OR 10497 OR WIRE TIE 8343 OR 108046 EVERY 600MM, USE SCREW G67-XX-XXX OR G56-XX-XXX AS APPROPRIATE FOR INSTALLATION.

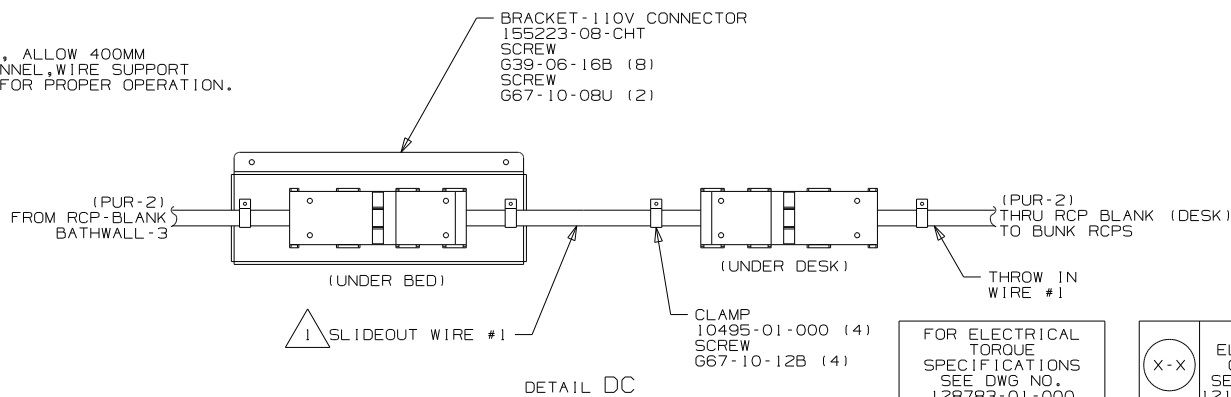
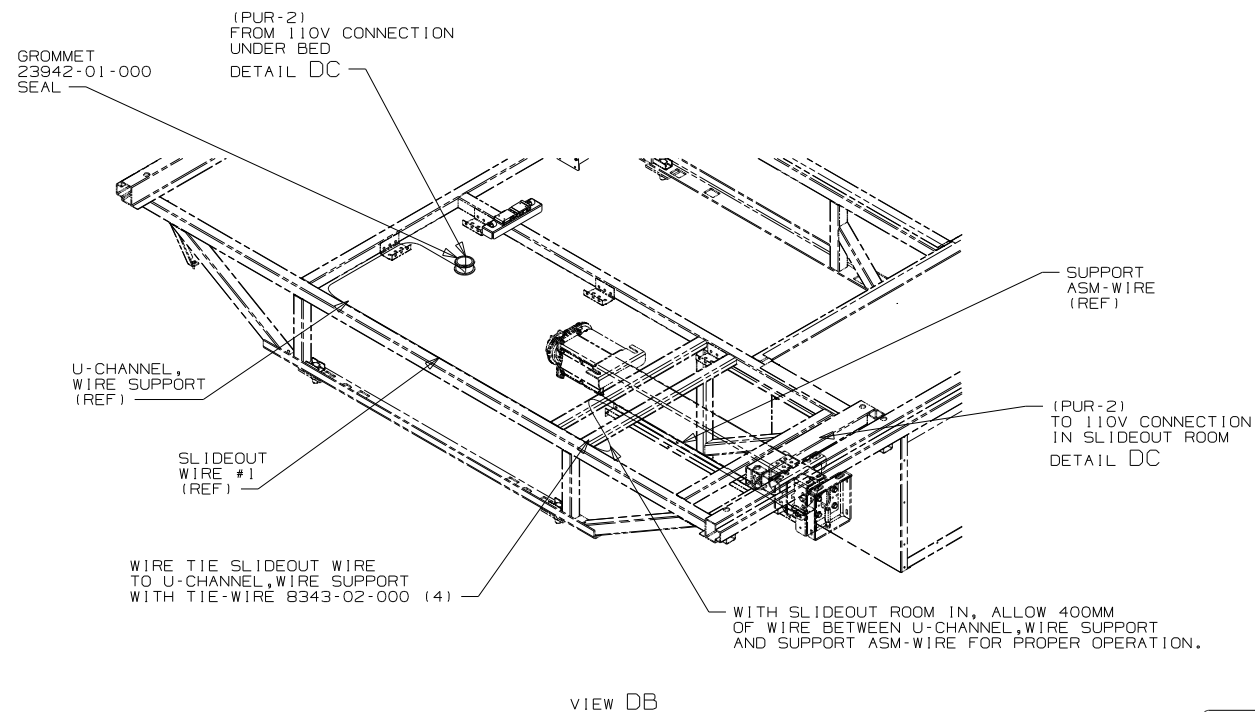
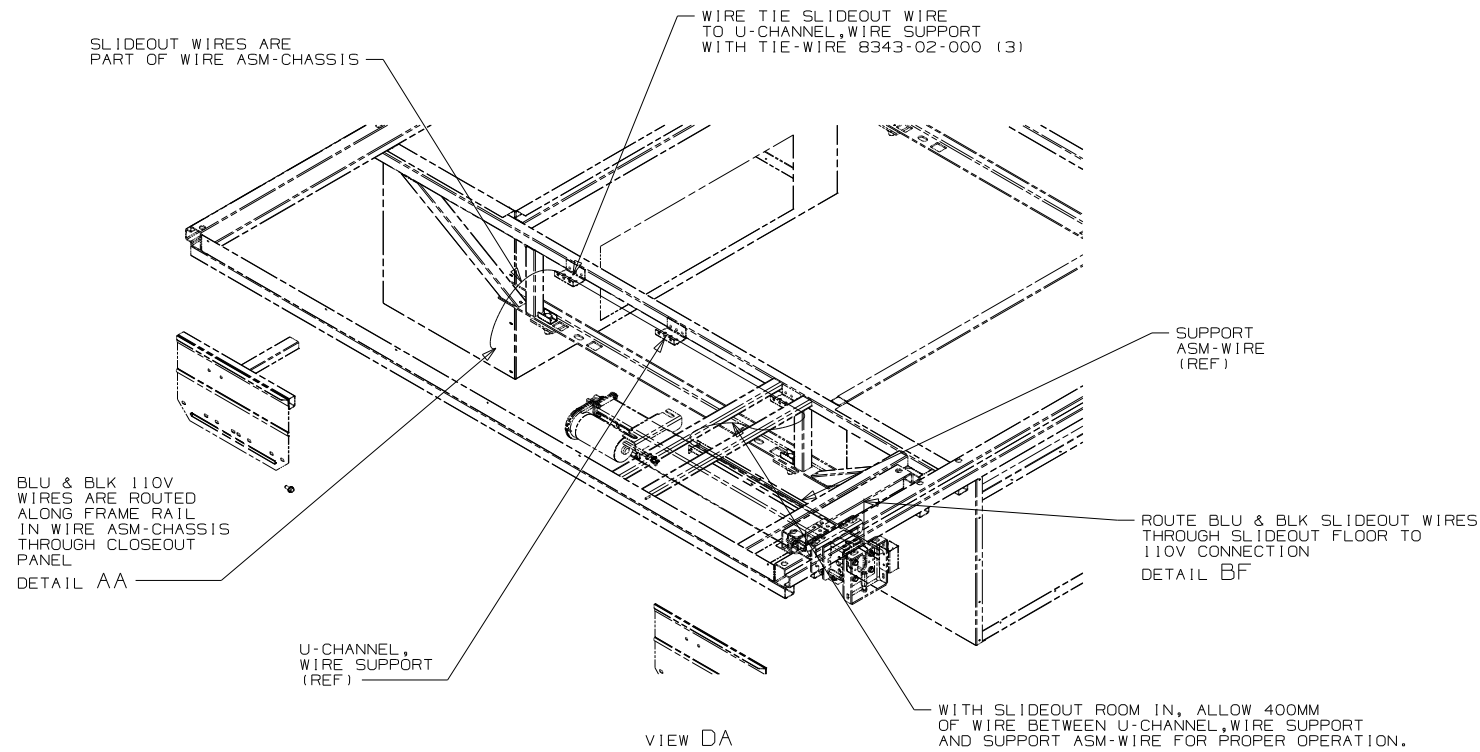
NOTES:

FOR ELECTRICAL TORQUE SPECIFICATIONS SEE DWG NO. 128783-01-000

FOR ELECTRICAL CALLOUTS SEE DWG NO. 121339-01-000

- 53D WTR HTR-6GAL/ELE/LP/MOTORAID
- 105 ENTERTAINMENT CENTR/EXT W/CD
- 1JU TV (REAR)-19"COLOR, STEREO
- 40A INVERTER-DC/AC WITHOUT
- 40I INVERTER-DC/AC, 1000 WATT
- 12D ELECTRICAL SYSTEM 30 AMP
- 265 CODES/STANDARDS-CSA/CMVSS
- 1B1 CODES/STANDARDS USA

FIRST USED		11 E32K
DO NOT SCALE DRAWING		
TITLE:	WIRING INSTL-BODY, 110V	
SHEET 3	PART NO	174375



NOTES:

1 SEE LOAD CENTER/ATS ASM FOR ADDITIONAL INFORMATION.

FOR ELECTRICAL TORQUE SPECIFICATIONS SEE DWG NO. 128783-01-000

FOR ELECTRICAL CALLOUTS SEE DWG NO. 121339-01-000

- 401 INVERTER-DC/AC, 1000 WATT
- 265 CODES/STANDARDS-CSA/CMVSS
- 1B1 CODES/STANDARDS USA
- 1B1 265

FIRST USED		11 E32K
DO NOT SCALE DRAWING		
TITLE		WIRING INSTL-BODY, 110V
SHEET 4	PART NO	174375
		REV