

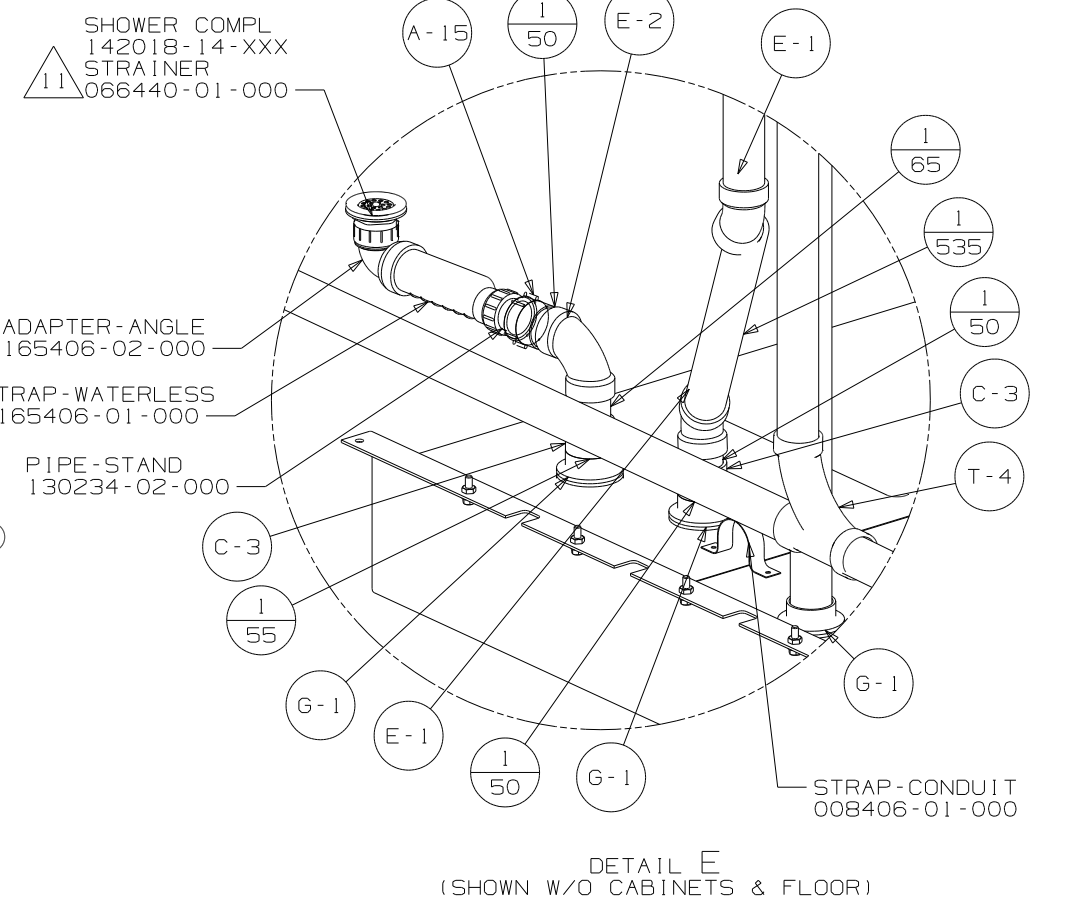
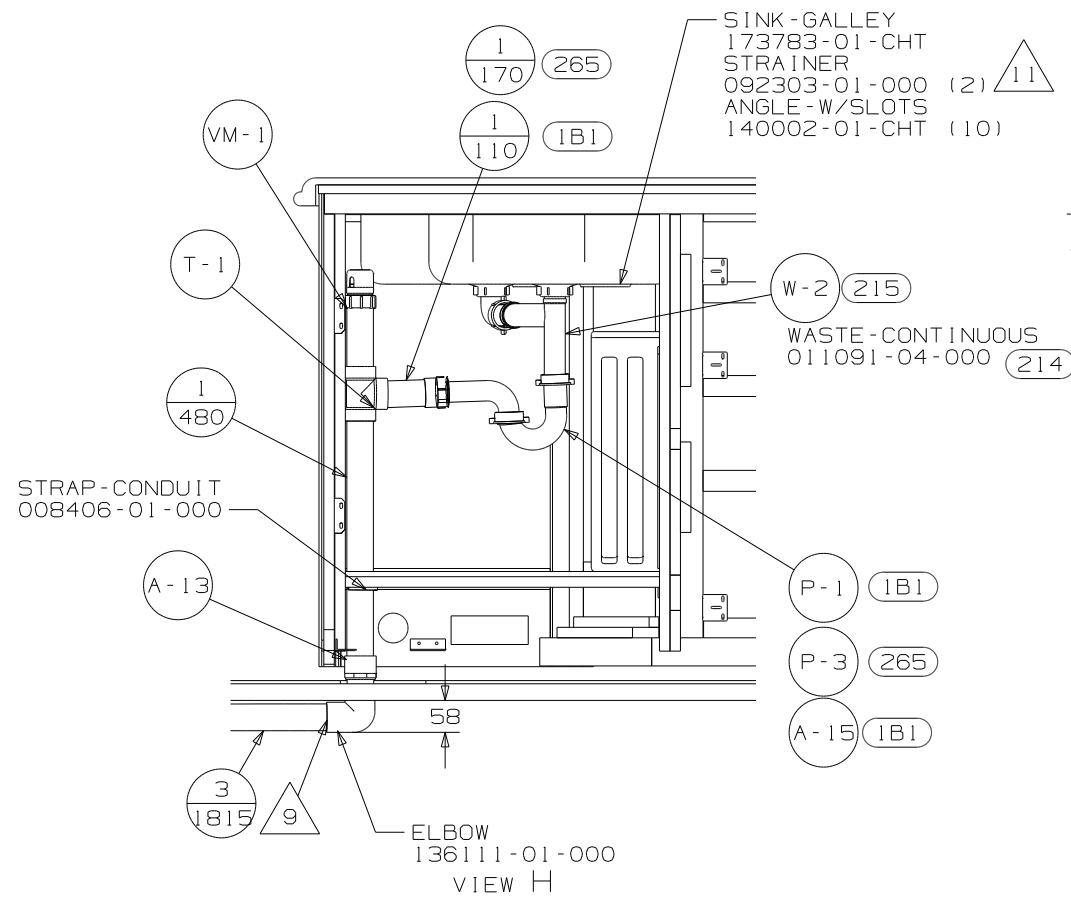
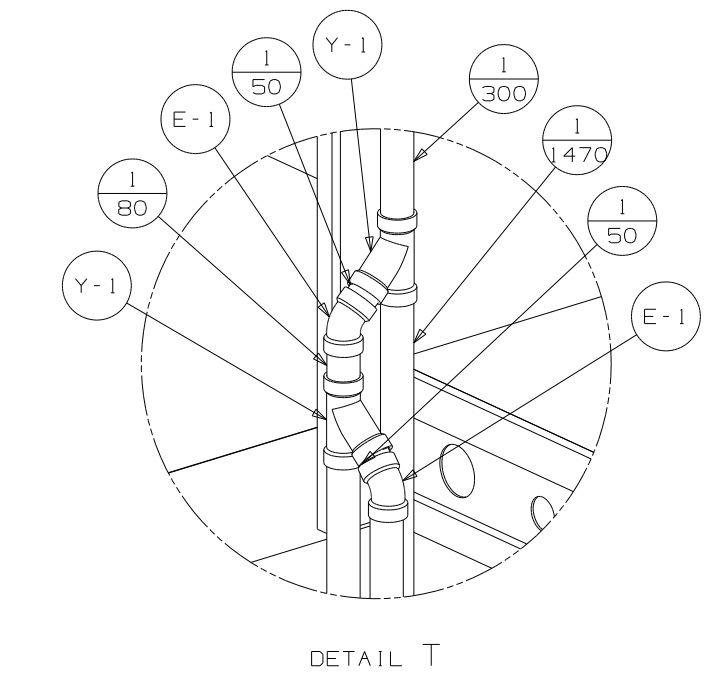
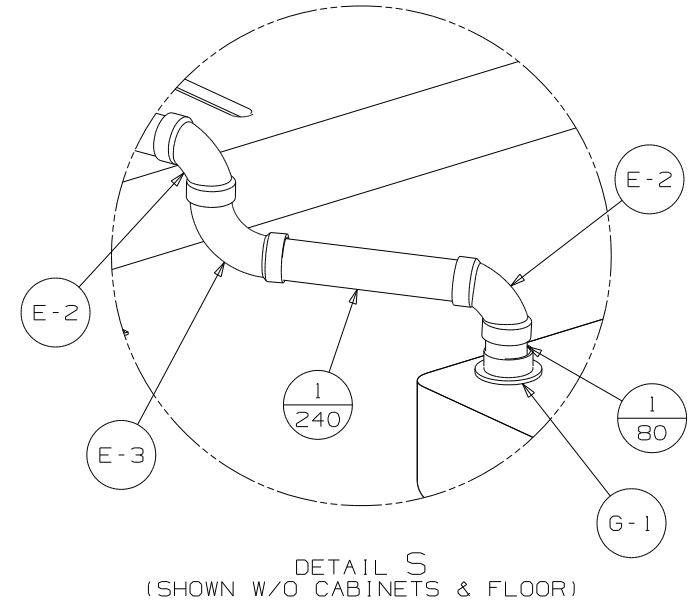
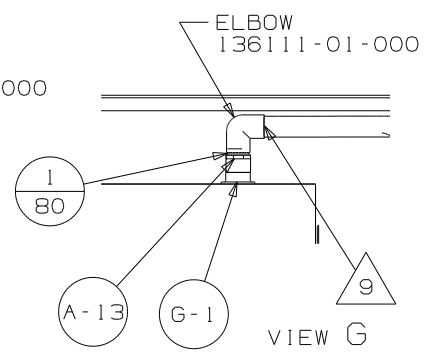
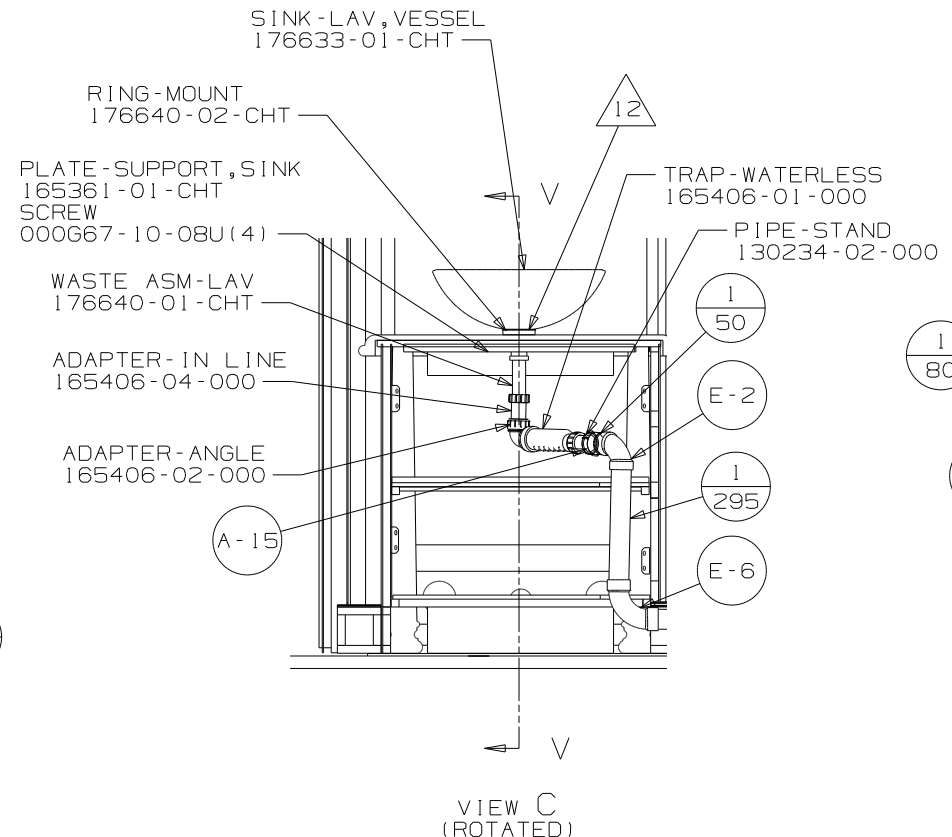
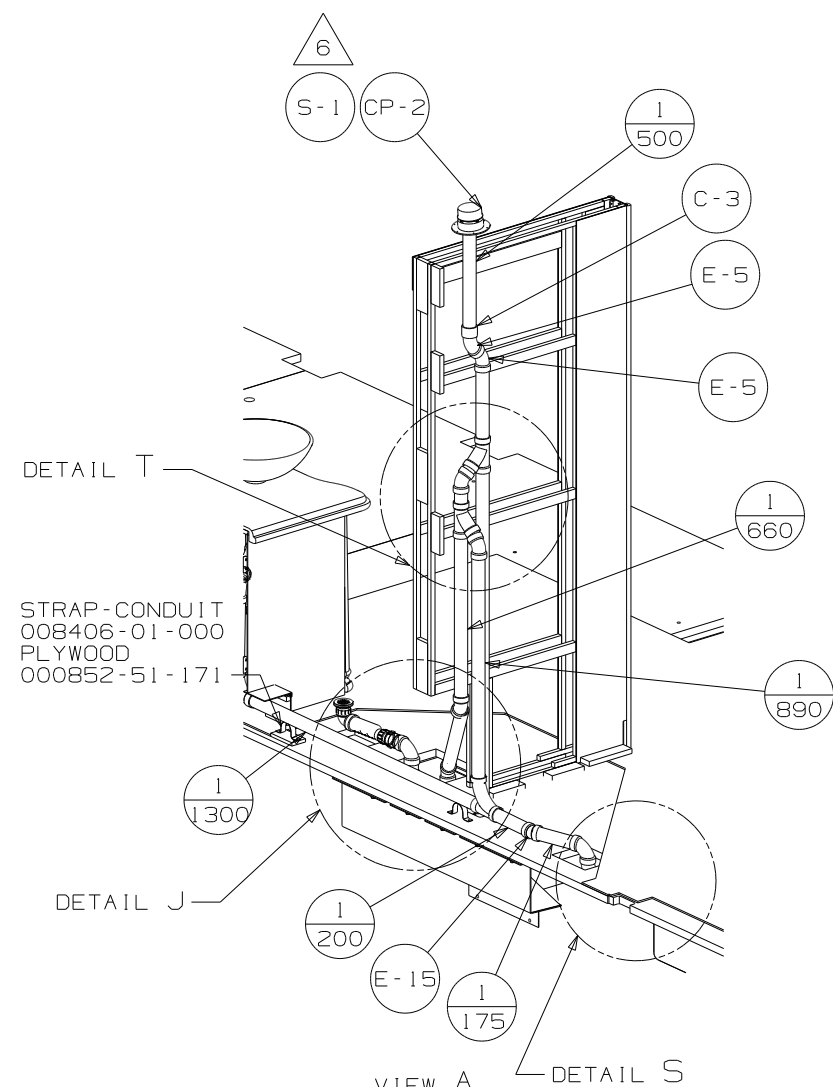
- (22A) VACUUM SYS-CENTRAL -WITHOUT
- (22T) VACUUM CLEANER-CENTRAL
- (215) WASHER/DRYER STACKED
- (1B1) CODES/STANDARDS USA
- (265) CODES/STDS -CSA ,CMVSS
- (21M) WASHER/DRYER PREP
- (214) DISHWASHER DRAWER STYLE
- (215) DISHWASHER WITHOUT

- △2 SCRUE MOUNT RING TO COUNTERTOP W/SILICONE.
- △11 USE SMOOTH PLUMBERS PUTTY 167459-01-000 TO SEAL STRAINER (0.2 PER STRAINER).
- △10 ATTACH TANK BRACKET TO RISER.
- △9 APPLY PRIMER 126427-02-000 AND CEMENT 126427-01-000 BETWEEN ELBOW AND FLEX PIPE.
- 8. SECURE DRAINAGE PIPES TO CABINET USING WIRE TIE 108046-02-000, AND SCREW 000G67-10-12B AT INTERVALS OF NOT MORE THAN 4 FEET APART.
- △7 SECURE VENT PIPE TO FLOOR WITH CLAMP 062401-02-000 (2),SCREW 000G67-10-12B (2), BRACKET 136878-01-CHT (2).
- △6 VENT PIPE MUST PROJECT 51 MIN AND 64 MAX ABOVE ROOF FOR PROPER FIT AND FUNCTION.
- 5. SEAL AROUND SHOWER WITH SILICONE.
- △4 GLUE FITTING AFTER CABINET IS INSTALLED.
- 3. ALL PIPE AND FITTINGS TO BE ASSEMBLED WITH SOLVENT 004020-01-000 (USA), 004020-02-000 (CAN)
- 2. SLOPE OF TRAP ARM MUST BE 6 PER 305 mm.
- 1. SLOPE OF HORIZONTAL PIPING TO BE MINIMUM OF 3 PER 305 mm.

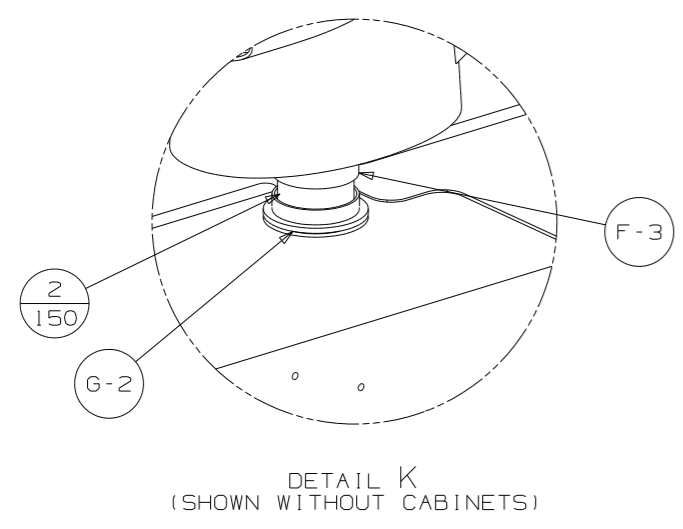
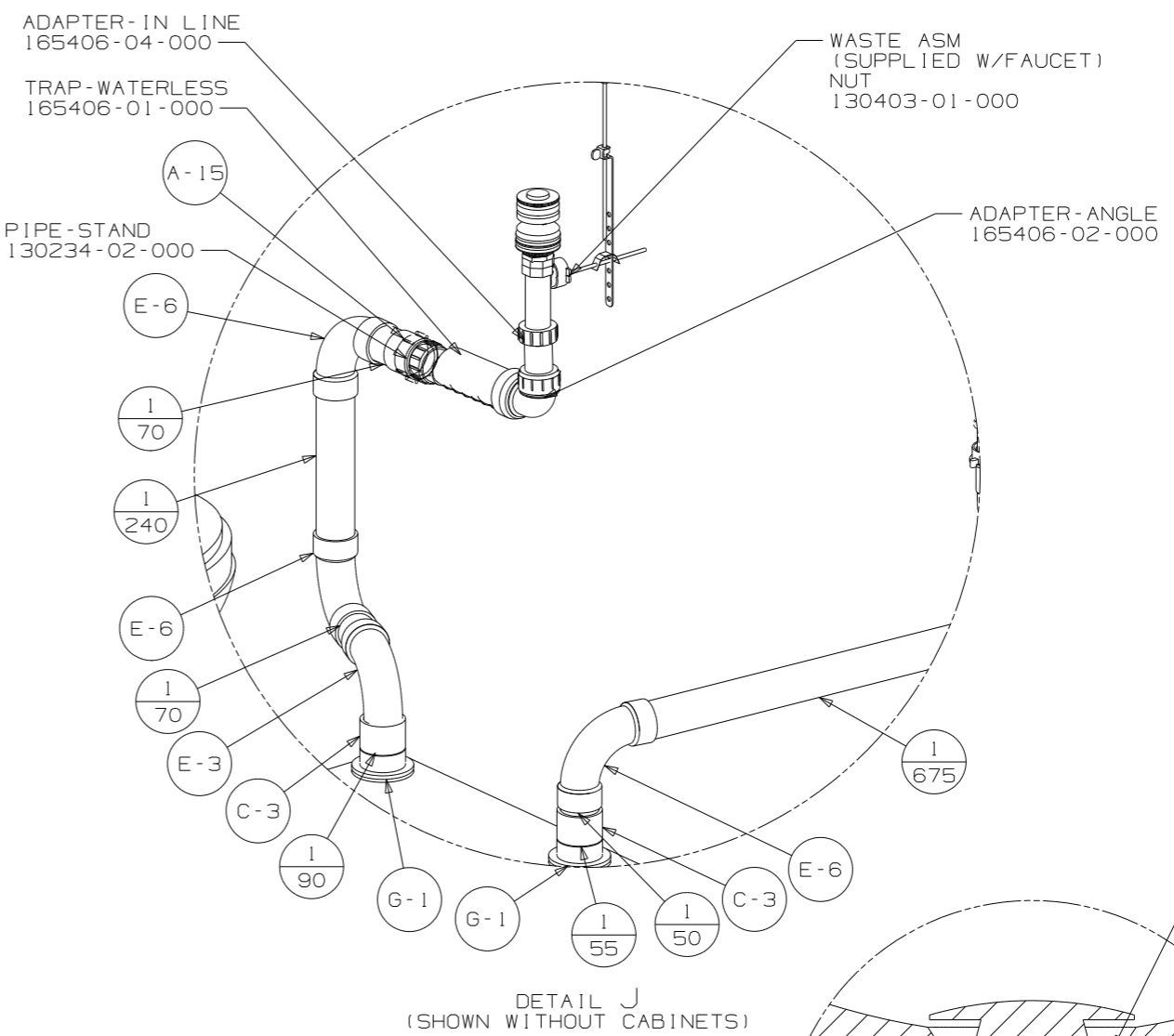
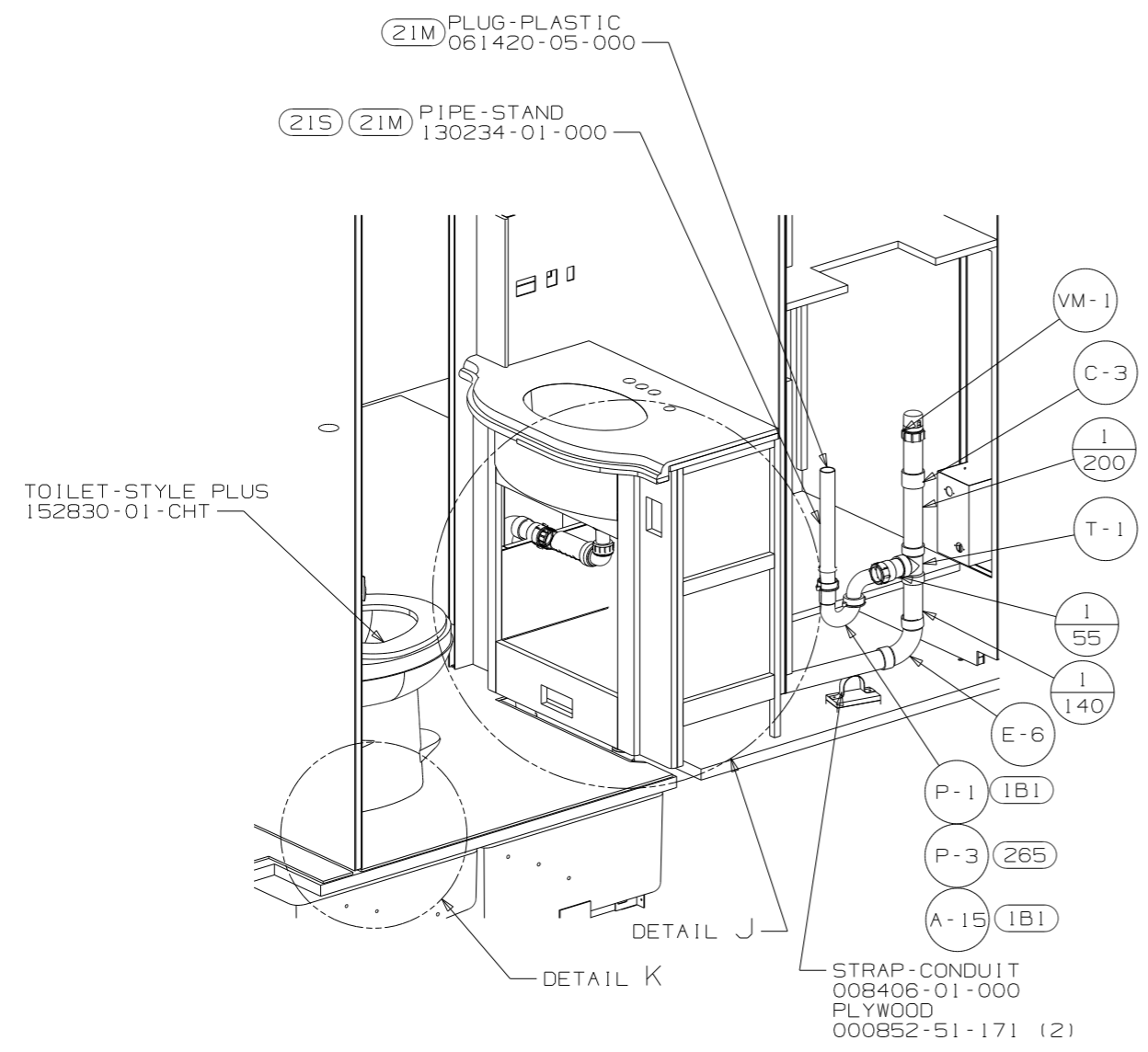
NOTES:

FOR DRAINAGE CALLOUTS SEE DWG NO 116229-01-000

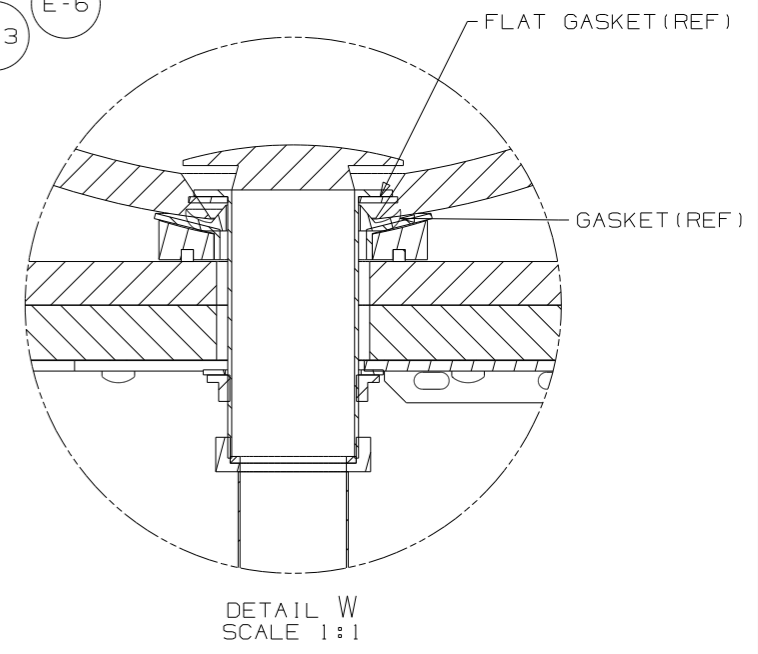
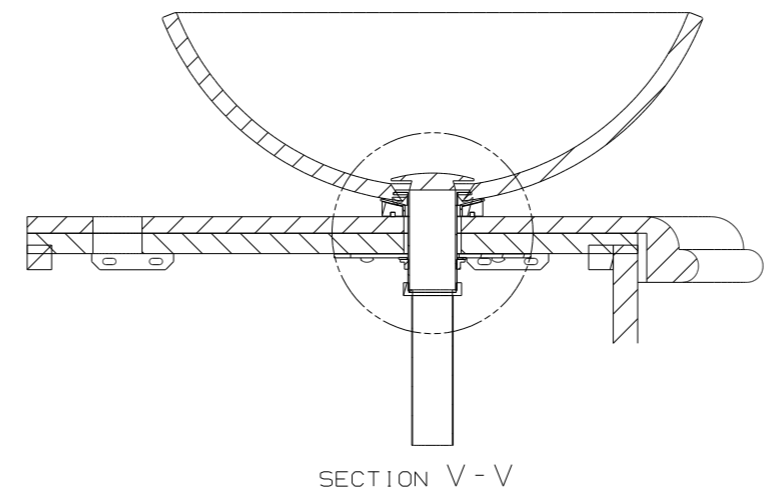
WINNEBAGO		COPYRIGHT 2011 WINNEBAGO INDUSTRIES, INC.	
DFTR	ORIG. DATE	ALL DIMENSIONS ARE IN MILLIMETERS	
CHKR		FIRST USED	
P.E.		11 R42AD	
M.E.		UNSPECIFIED TOLERANCES ARE:	
DSNR		MATERIAL:	
		WHOLE DIM (X)	: 3
		ONE-PLACE (X.X)	: 1.5
		TWO-PLACE (X.XX)	: 0.50
		ANGLE	: 1°
		THIRD ANGLE PROJECTION	
DO NOT SCALE DRAWING		REFER TO ES0018 FOR FASTENER TIGHTENING GUIDELINES	
TITLE: DRAINAGE SYSTEM INSTL			
SHEET 1 OF 4	PART NO 176557	REV	
REF:	1 1/21/2011		



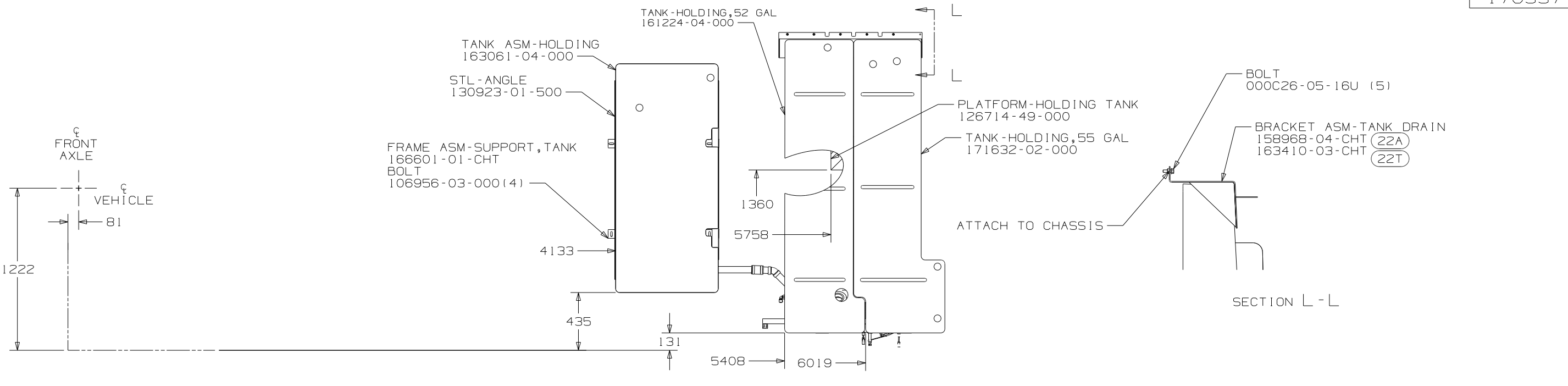
FIRST USED	11 R42AD
TITLE	DO NOT SCALE DRAWING
	DRAINAGE SYSTEM INSTL
SHEET 2	PART NO 176557 REV



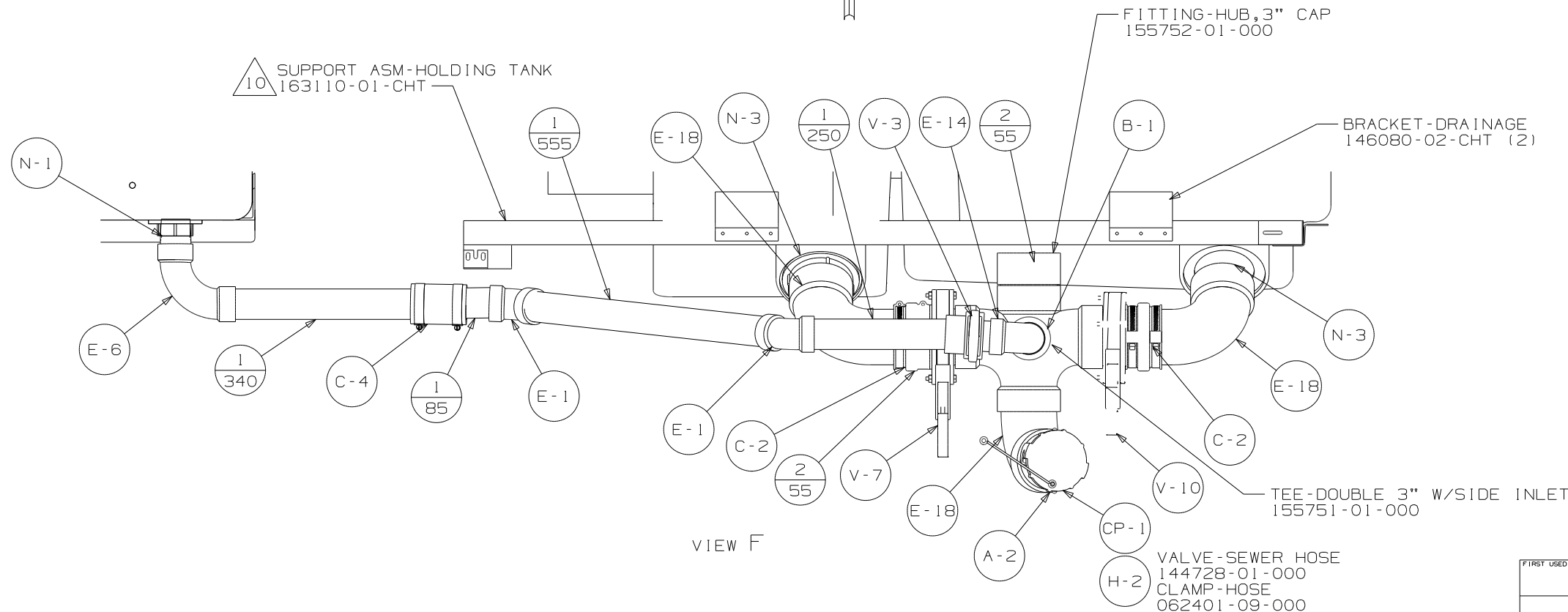
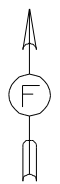
VIEW B



FIRST USED	11 R42AD
TITLE	DO NOT SCALE DRAWING
TITLE	DRAINAGE SYSTEM INSTL
SHEET 3	PART NO 176557 REV

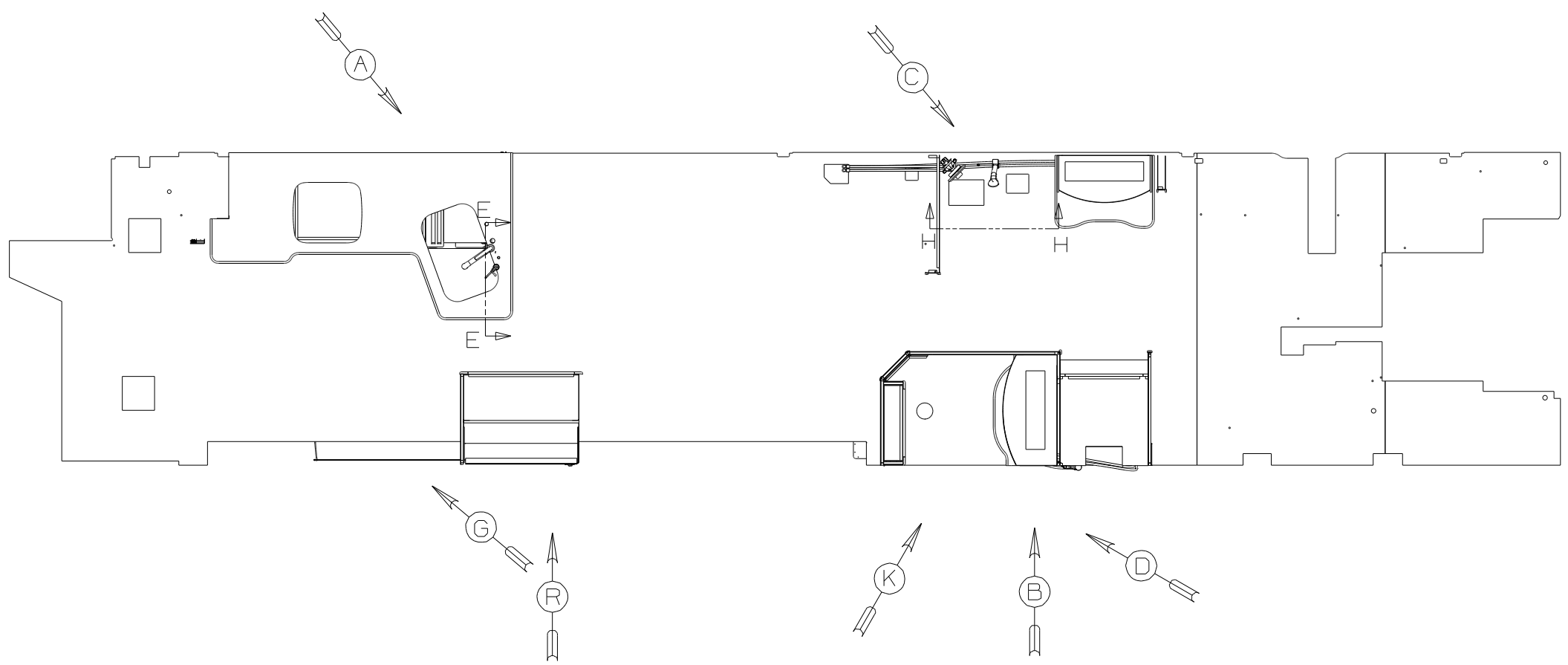


VIEW D
(SHOWN W/O CABINETS/FLOOR)



VIEW F

FIRST USED	11 R42AD
DO NOT SCALE DRAWING	
TITLE:	DRAINAGE SYSTEM INSTL
SHEET 4	PART NO 176557 REV

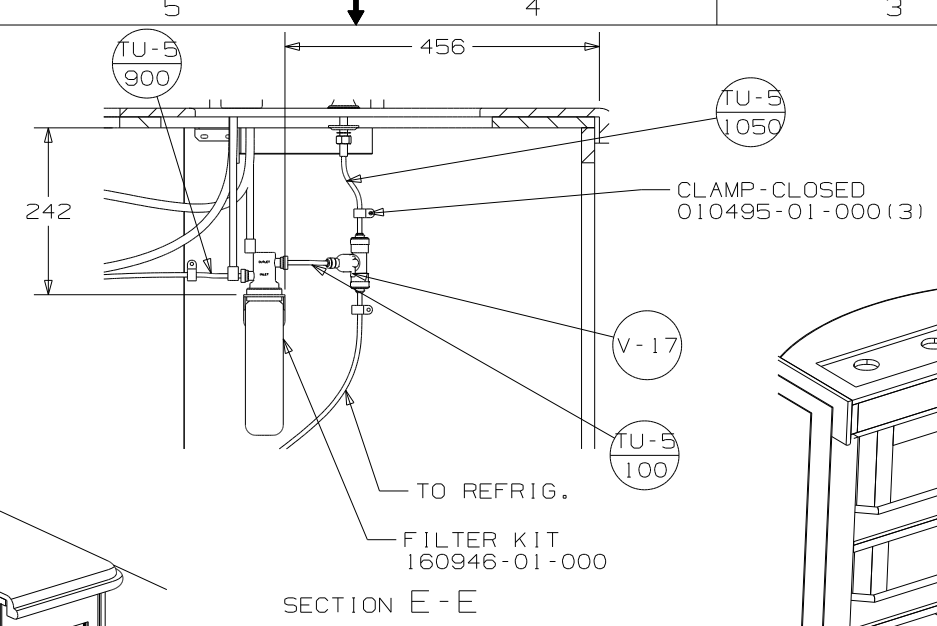
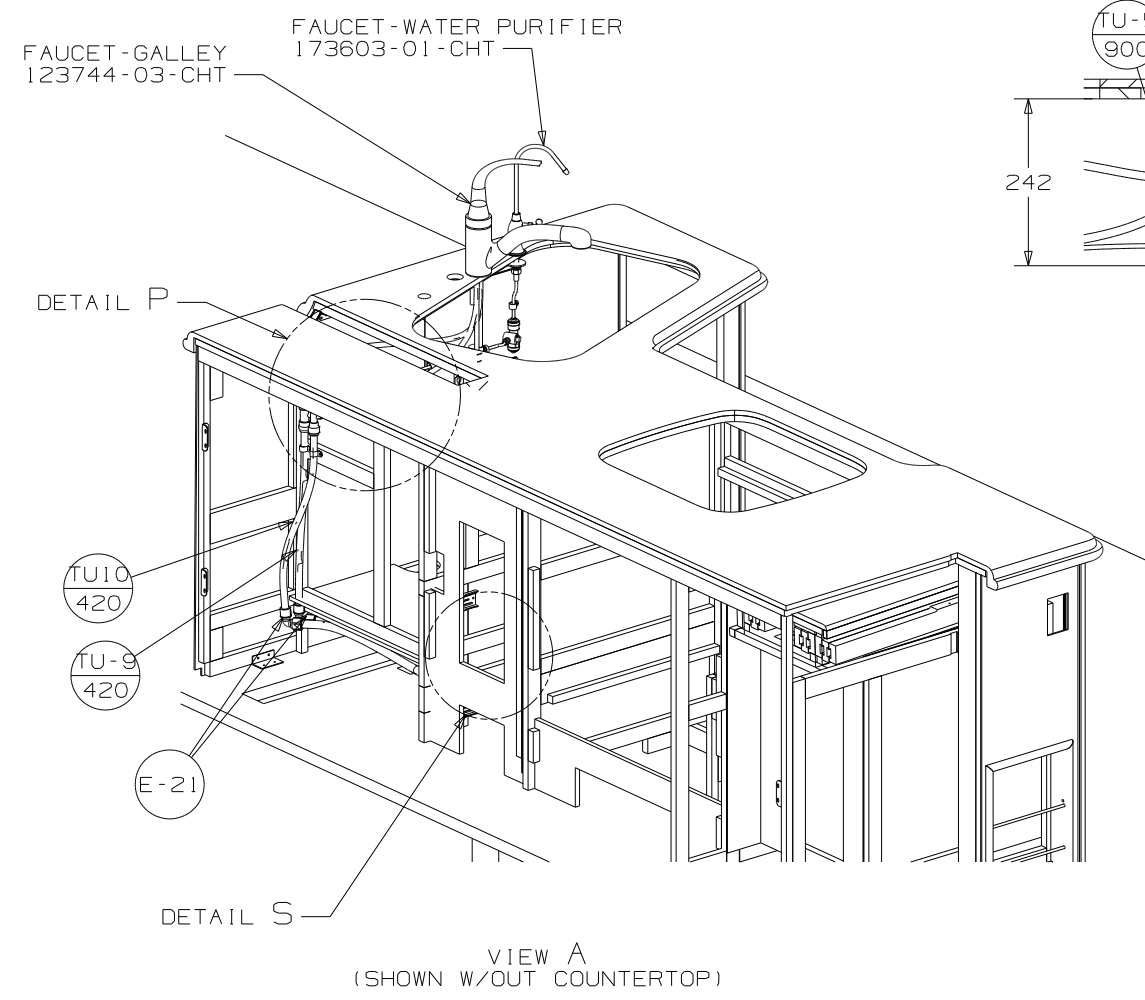


- (79W) REFRIGERATOR-4 DOOR
- (15L) REFR/FRZR 2DOOR RESIDENTIAL
- (21S) WASHER & DRYER-PAIR
- (21M) WASHER/DRYER PREP
- (214) DISHWASHER-DRAWER STYLE
- (215) DISHWASHER WITHOUT
- (505) HOSE REEL -WATER,POWERED

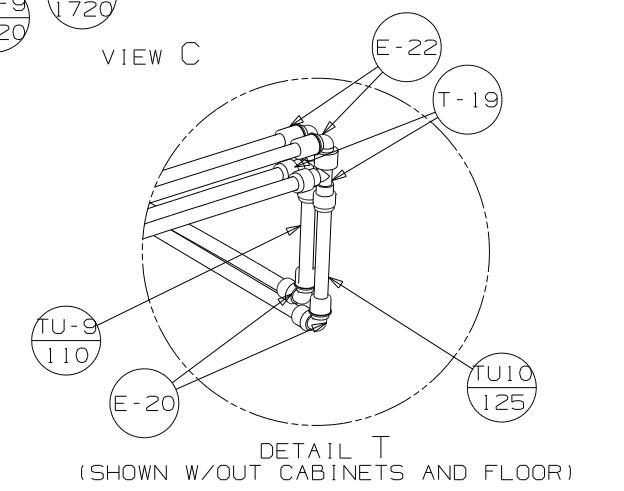
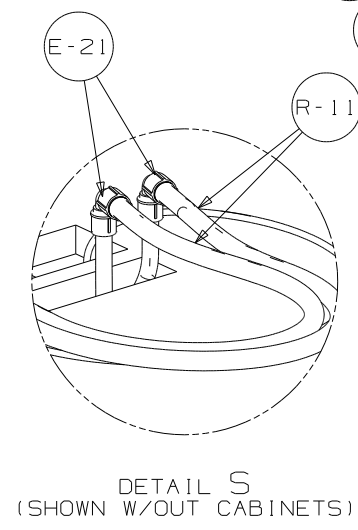
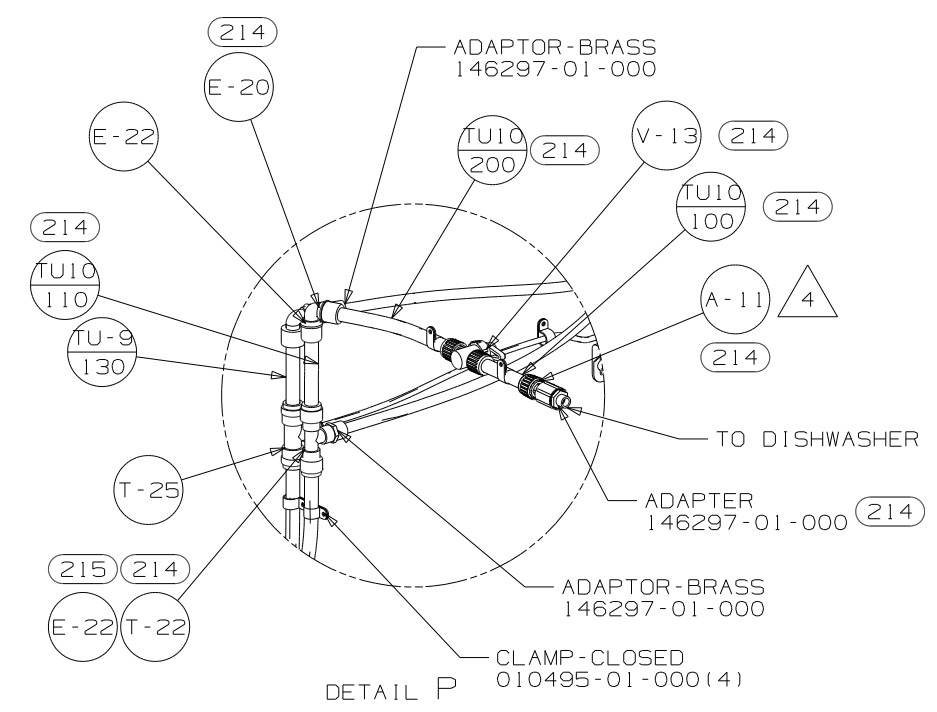
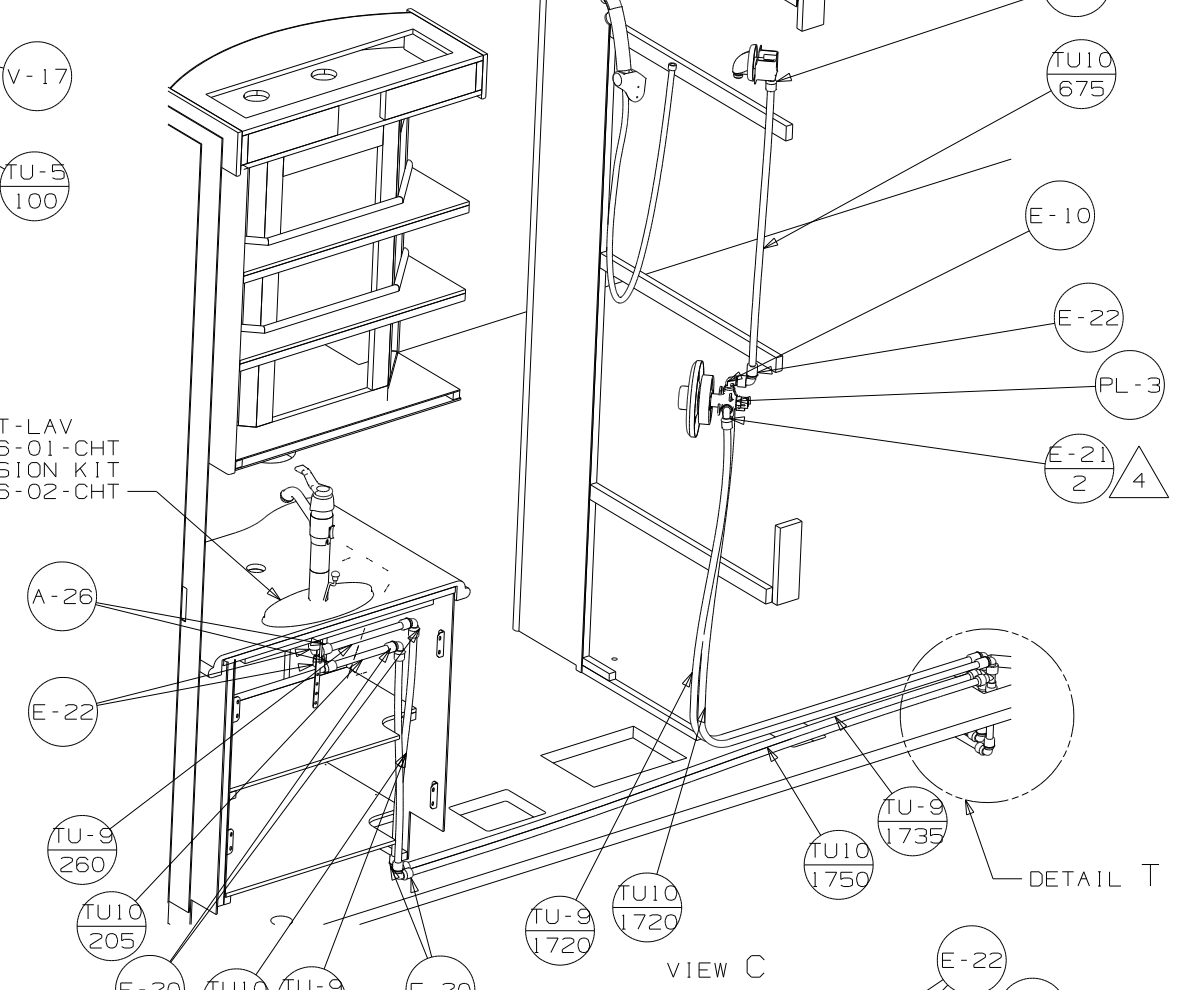
- NOTES:
- 9 VALVE MUST REMAIN OPEN AFTER WATER TEST.
 - 8 FOLLOW AQUAHOT TEST-PROCEDURE REQUIRES 5 GALLONS OF 157665-02-000 ANTIFREEZE FOR WINTERIZATION.
 - 7 ADD PIPE WRAP (LADDER SCRAP 110157-02-000) INSULATION.
 - 6 ADD TEFLON TAPE 010405-03-000.
 - 5 ADD TEFLON TAPE 010405-02-000.
 - 4 ADD TEFLON TAPE 010405-01-000.
 - 3. ALL TUBING TO BE SECURED AT 1200 INTERVALS MAXIMUM WITH CLAMP 010495-01-000 AND SCREW 000G67-10-12B OR EQUIVALENT.
 - 2. TUBING TO BE INSTALLED WITH SUFFICIENT SLOPE TO PROVIDE DRAINAGE TO NEAREST VALVE.
 - 1. PLASTIC FITTINGS TO BE SEALED WITH SEALANT 084456-01-000.

(X-X)
FOR
WATER
CALLOUTS
SEE DWG NO
116230-01-000

WINNEBAGO		COPYRIGHT 2010 WINNEBAGO INDUSTRIES, INC.	
DFT	ORIG. DATE	ALL DIMENSIONS ARE IN MILLIMETERS	
CHKR		FIRST USED	
P.E.		11 R42AD	
M.E.		UNSPECIFIED TOLERANCES ARE:	
DSNR		MATERIAL:	
		WHOLE DIM (X)	: 3
		ONE-PLACE (X.X)	: 1.5
		TWO-PLACE (X.XX)	: 0.50
		ANGLE	: 1°
		THIRD ANGLE PROJECTION	
DO NOT SCALE DRAWING		REFER TO ES0018 FOR FASTENER TIGHTENING GUIDELINES	
TITLE: WATER SYSTEM INSTL			
SHEET 1 OF 5	PART NO	176559	REV

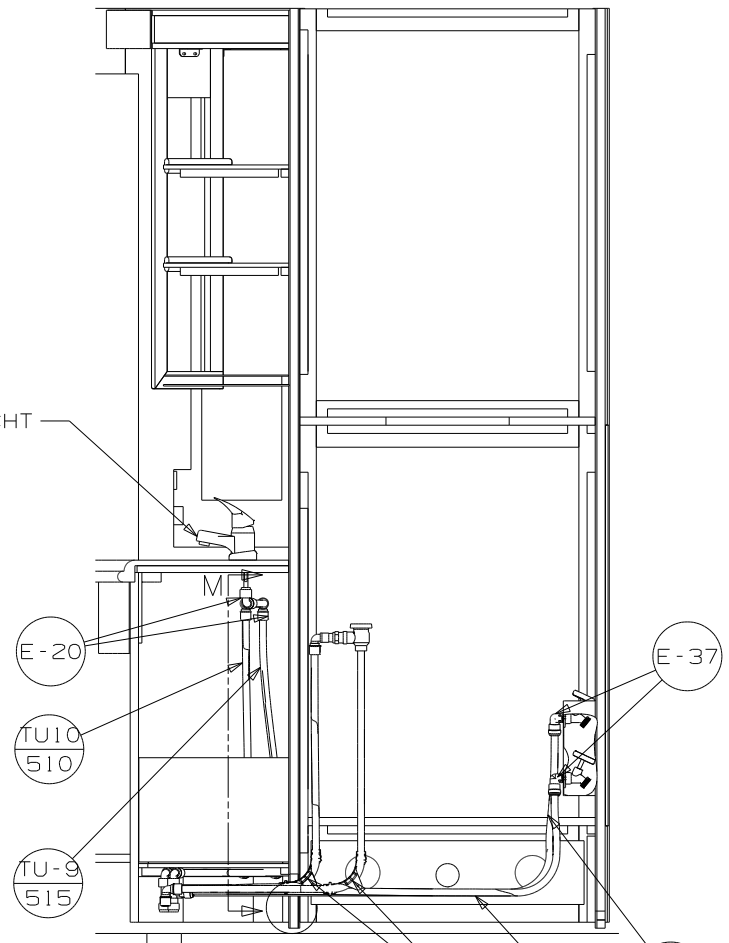


FAUCET-LAV
155716-01-CHT
EXTENSION KIT
155716-02-CHT

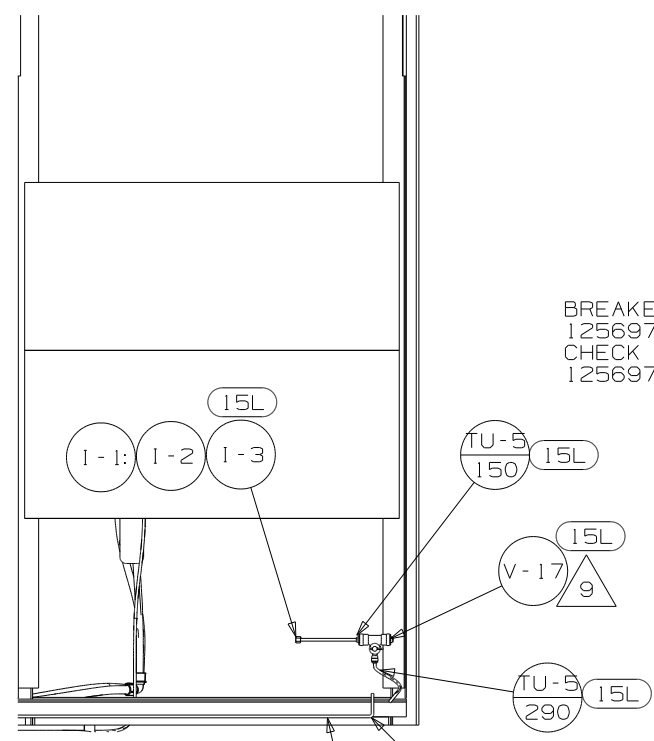


FIRST USED	11 R42AD
TITLE	DO NOT SCALE DRAWING
TITLE	WATER SYSTEM INSTL
SHEET 2	PART NO 176559 REV

FAUCET
170451-01-CHT



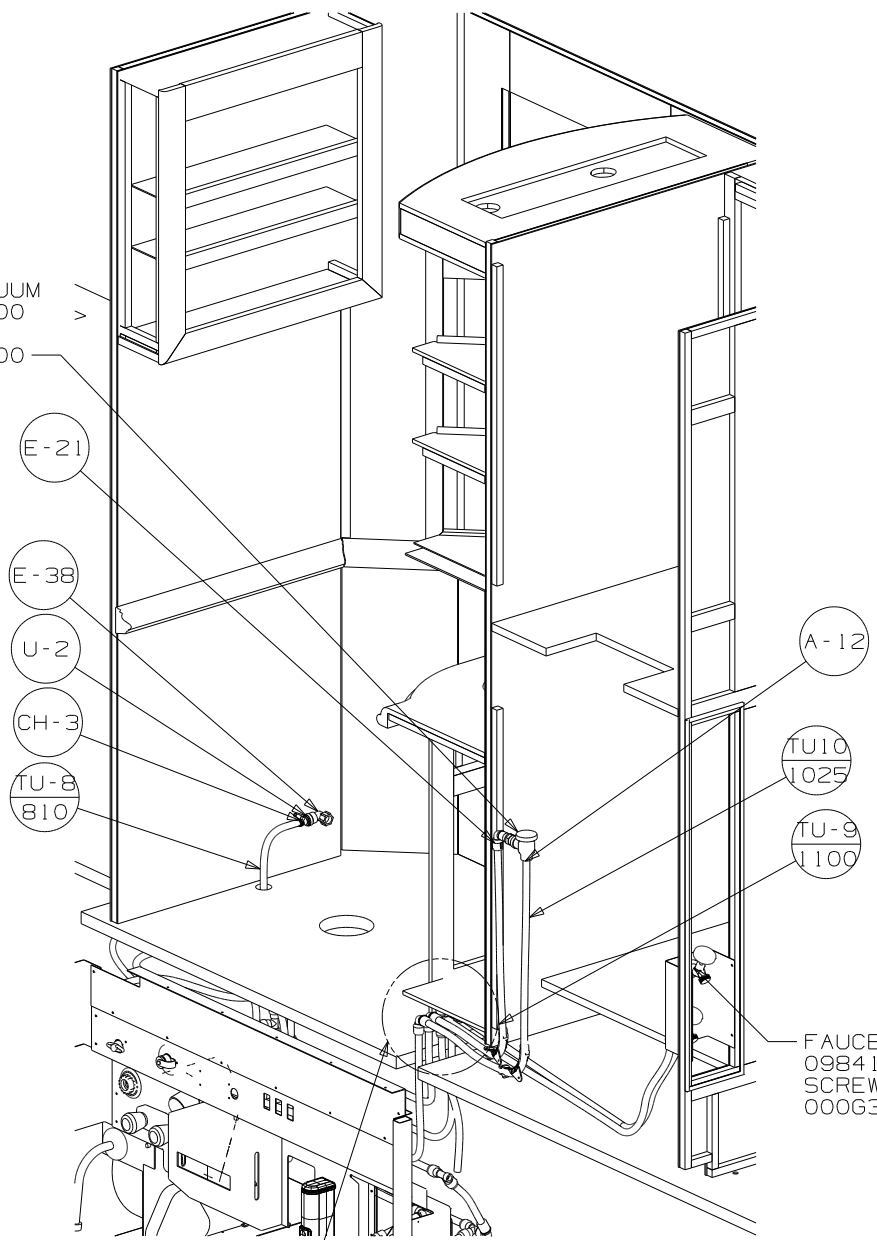
VIEW B



VIEW R

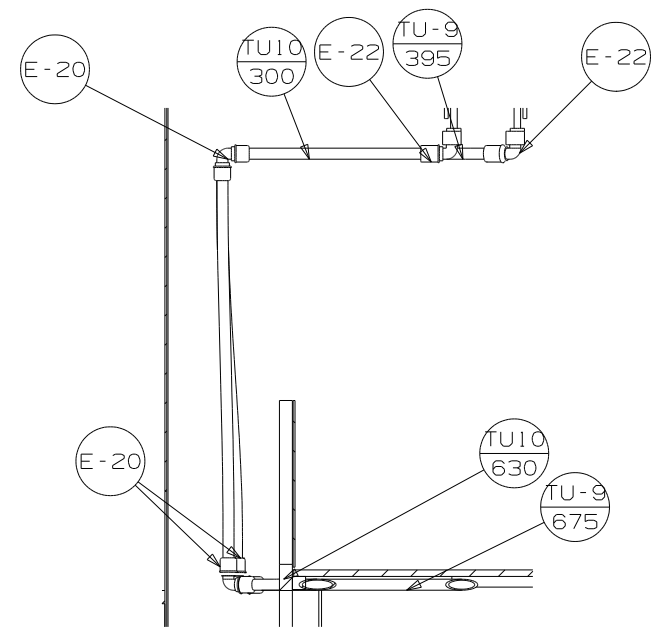
BREAKER-VACUUM
125697-04-000
CHECK VALVE
125697-03-000

TO ICEMAKER

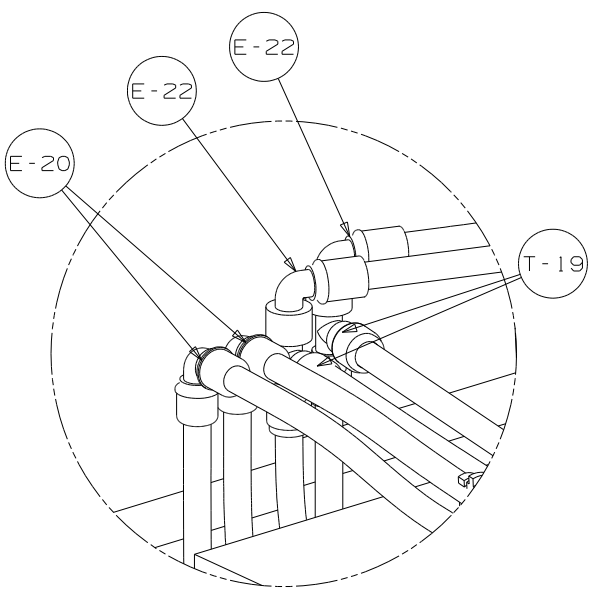


VIEW D

DETAIL F



SECTION M-M



DETAIL F
(SHOWN W/OUT CABINETS)

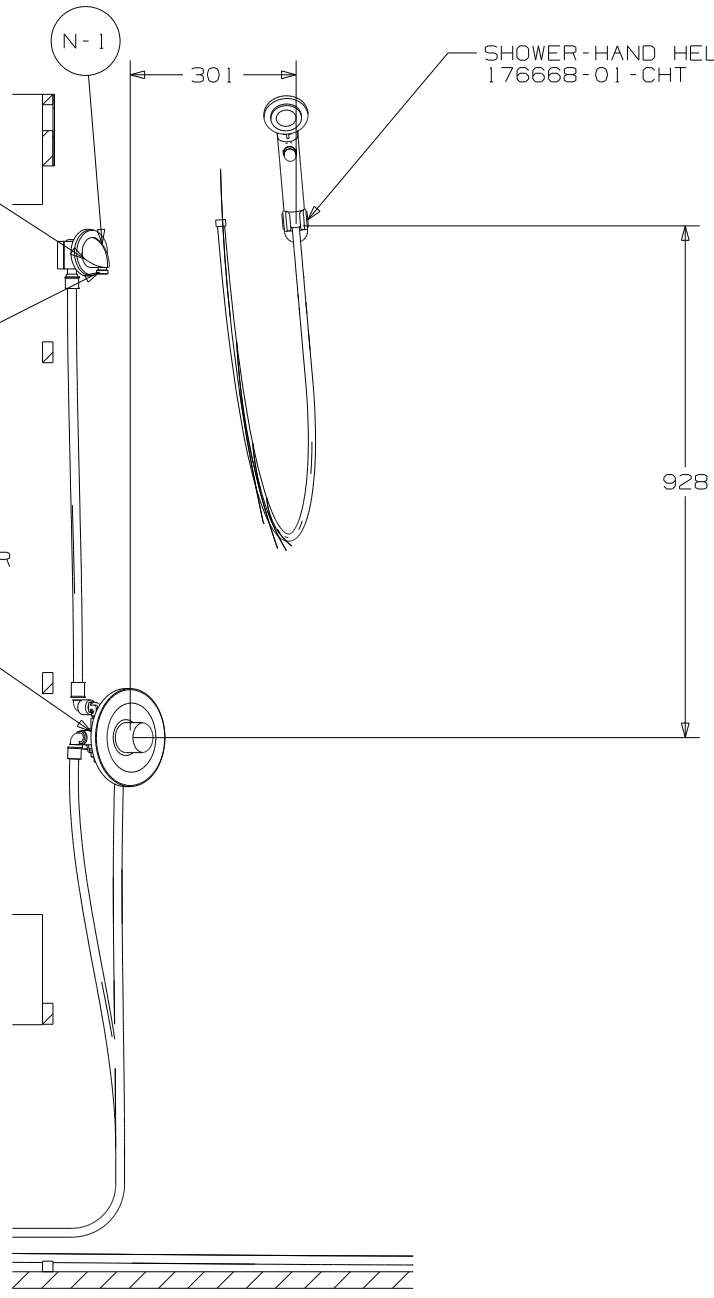
FIRST USED	11 R42AD
TITLE:	DO NOT SCALE DRAWING
SHEET 3	WATER SYSTEM INSTL
PART NO	176559
REV	

BRACKET-SHOWER HEAD
143101-01-CHT
DROP ELL
135028-02-CHT
SPACER
130041-03-CHT

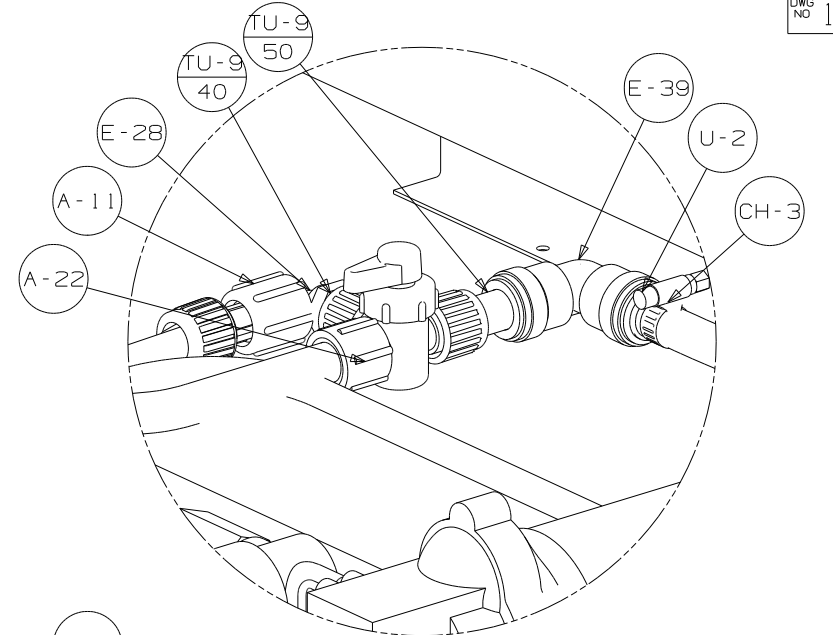
SHOWER-HAND HELD
176668-01-CHT

VACUUM BREAKER
176678-01-CHT

FAUCET-VALVE, SHOWER
144596-01-CHT
FAUCET-TRIM KIT
144596-02-CHT



SECTION H-H

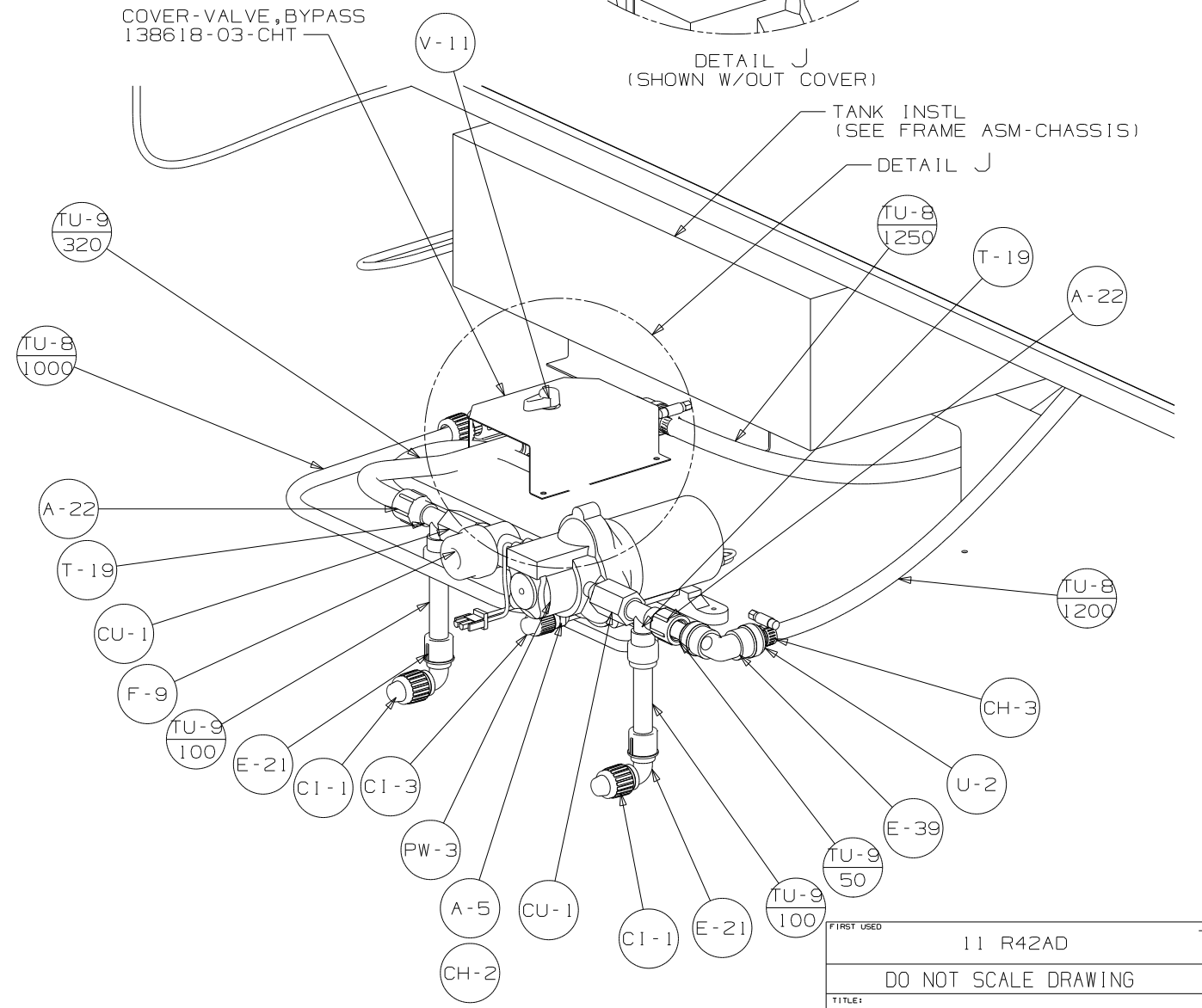


DETAIL J
(SHOWN W/OUT COVER)

COVER-VALVE, BYPASS
138618-03-CHT

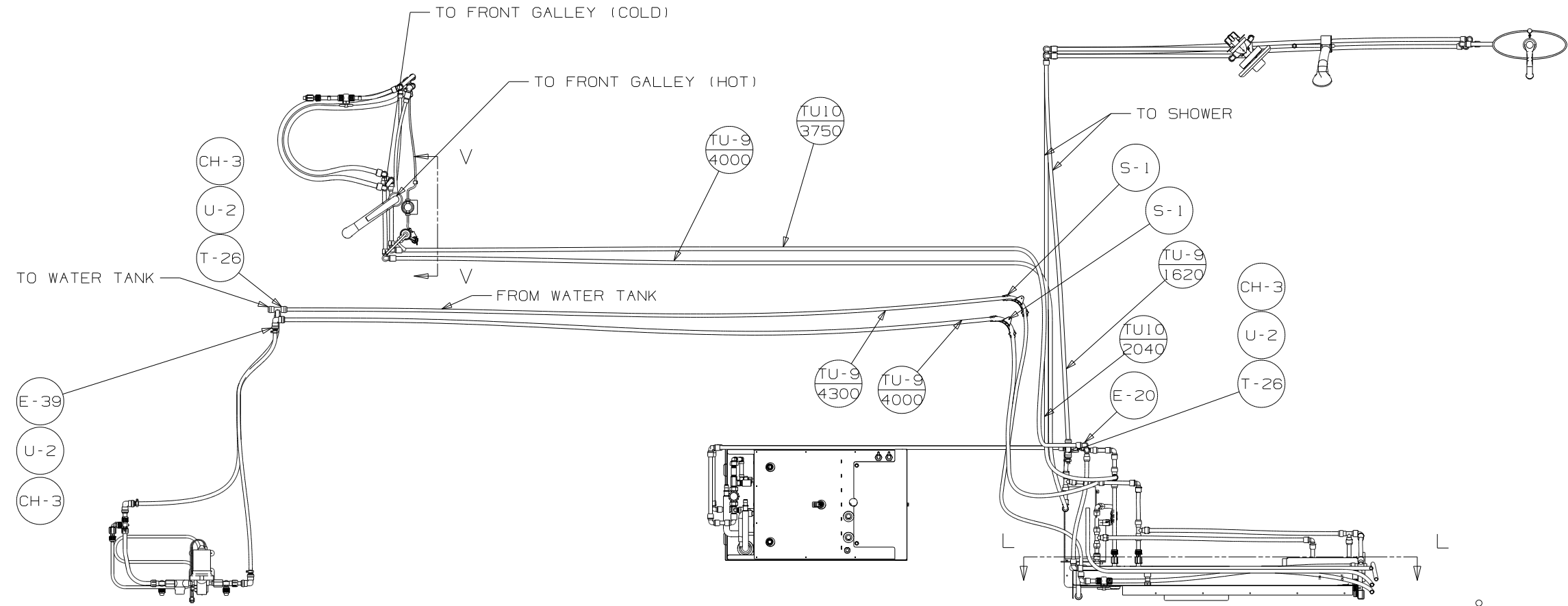
V-11

TANK INSTL
(SEE FRAME ASM-CHASSIS)

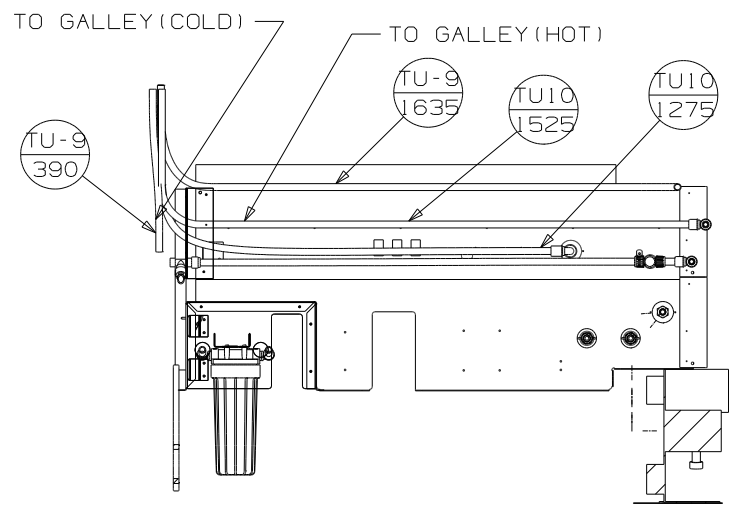


VIEW G

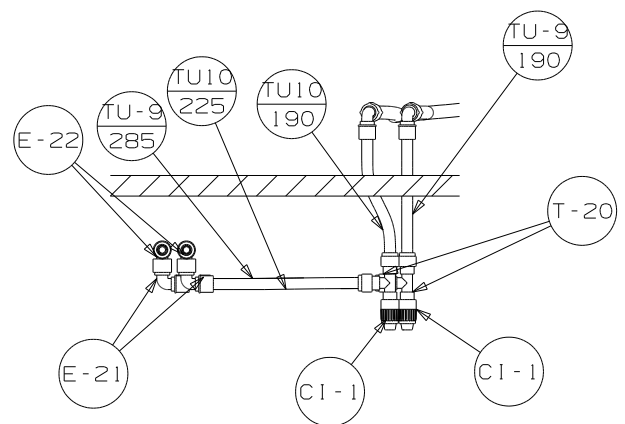
FIRST USED	11 R42AD
TITLE	DO NOT SCALE DRAWING
TITLE	WATER SYSTEM INSTL
SHEET 4	PART NO 176559 REV



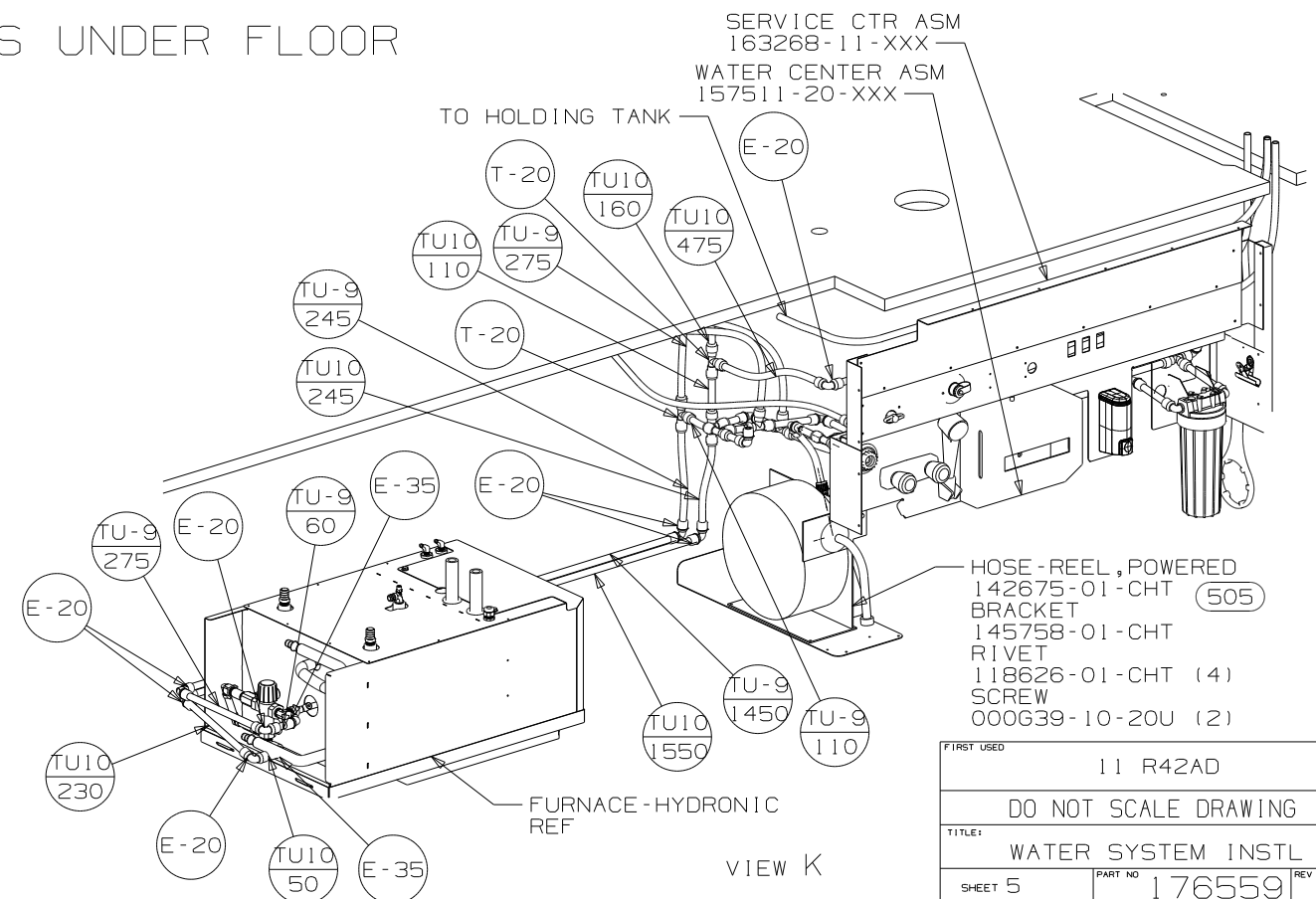
SHOWING LINES UNDER FLOOR



SECTION L-L (ROTATED)



SECTION V-V



VIEW K

FIRST USED	11 R42AD
TITLE	DO NOT SCALE DRAWING
TITLE	WATER SYSTEM INSTL
SHEET 5	PART NO 176559 REV