

- (215) DISHWASHER WITHOUT
- (214) DISHWASHER DRAWER STYLE
- (430) TOILET-PORCELAIN
- (215) WASHER/DRYER STACKABLE
- (265) CODES/STANDARDS-CSA/CMVSS
- (21M) WASHER/DRYER PREP
- (1B1) CODES/STANDARDS USA

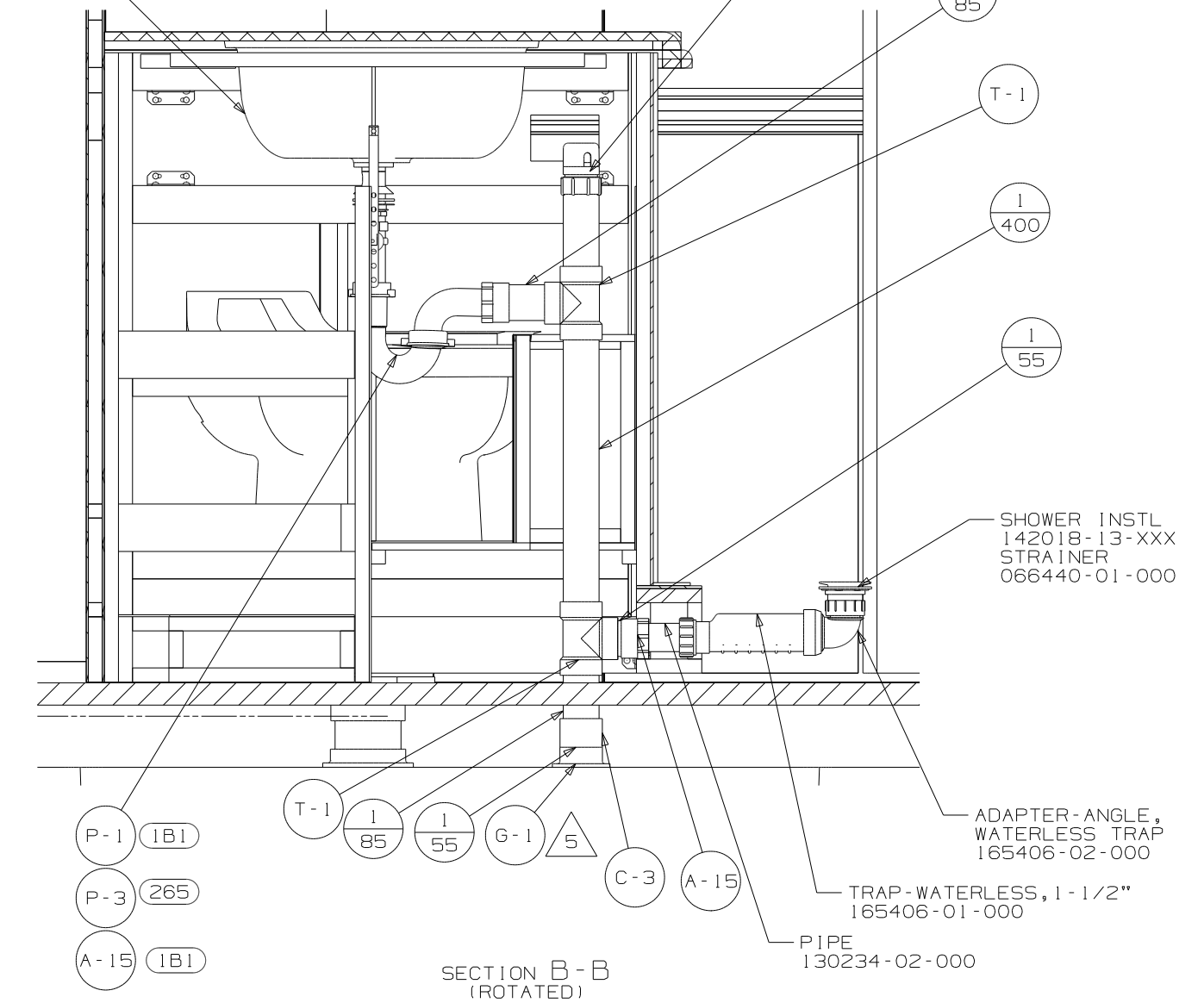
8. USE SMOOTH PLUMBERS PUTTY 167459-01-000 TO SEAL STRAINER (.2 PER STRAINER)
7. SEE DWG 061607-01-000 FOR INSTL OF GROMMETS.
6. SEAL ALL AROUND SHOWER WITH SILICONE.
5. SECURE VENT TUBES TO FLOOR WITH BRACKET.
4. VENT PIPE MUST PROJECT 51 MIN AND 64 MAX. ABOVE ROOF FOR PROPER FIT AND FUNCTION.
3. ALL PIPE AND FITTINGS TO BE ASSEMBLED WITH SOLVENT 004020-01-000.
2. SLOPE OF TRAP ARM MUST BE 6 PER 305.
1. SLOPE OF HORIZONTAL PIPING TO BE 6 PER 305 mm.

NOTES:

FOR
DRAINAGE
CALLOUTS
SEE DWG NO
116229-01-000

WINNEBAGO		COPYRIGHT 2010 WINNEBAGO INDUSTRIES, INC.	
DFTR	CHKR	P.E.	M.E.
DSNR	ORIG. DATE	ALL DIMENSIONS ARE IN MILLIMETERS	
UNSPECIFIED TOLERANCES ARE:		MATERIAL:	
HOLE DIM (X)		3	
ONE-PLACE (X,X)		3	
TWO-PLACE (X,XX)		3	
ANGLE		3	
THIRD ANGLE PROJECTION		REFER TO ES0018 FOR FASTENER TIGHTENING GUIDELINES	
DO NOT SCALE DRAWING			
TITLE: DRAINAGE SYSTEM INSTL			
SHEET 1 OF 4		PART NO 176477	
REF:		12/15/2010	

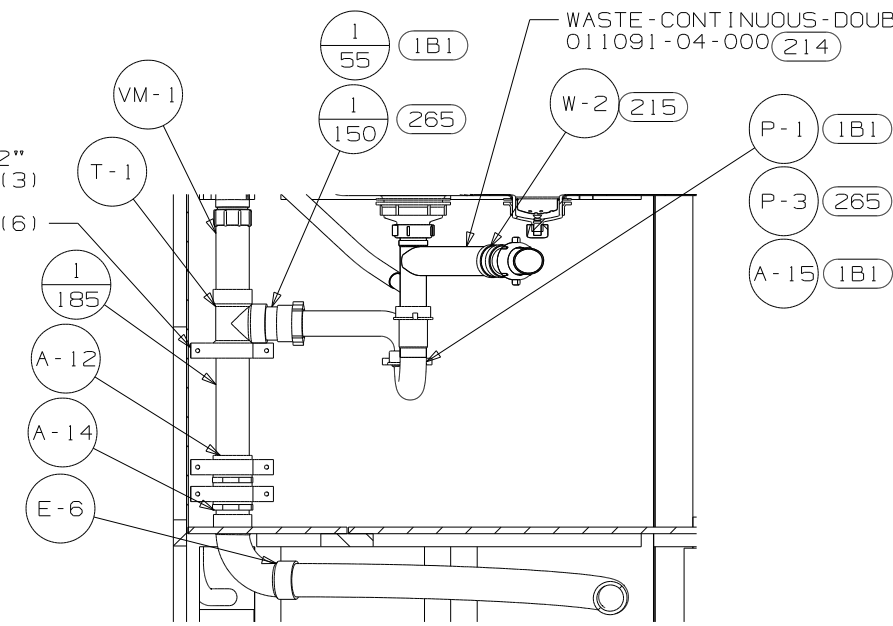
COUNTERTOP-SINK
REF



SECTION B-B
(ROTATED)

- P-1 (1B1)
- P-3 (265)
- A-15 (1B1)

WASTE-CONTINUOUS-DOUBLE SINK
011091-04-000 (214)

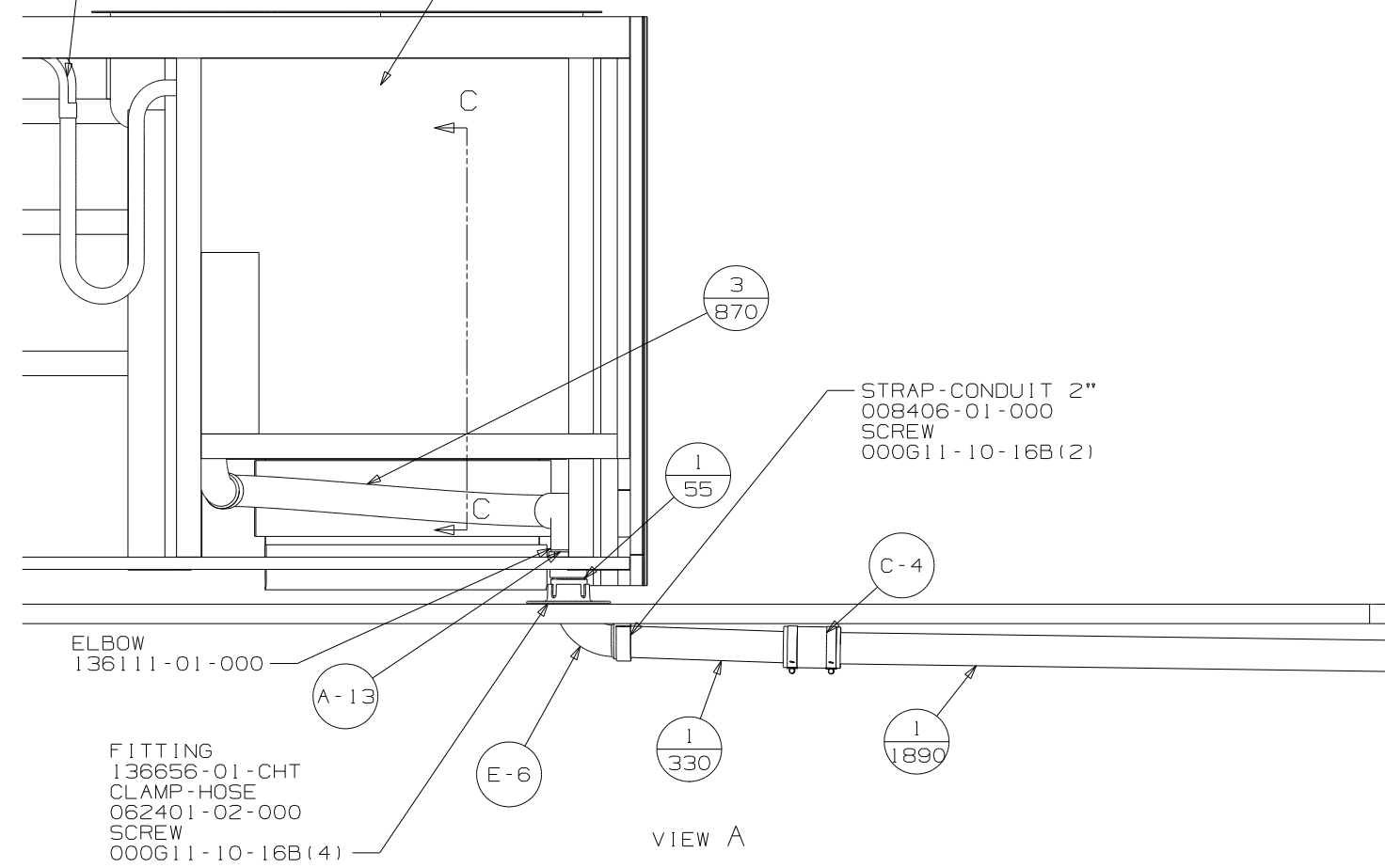


SECTION C-C

STRAP-CONDUIT, 2"
008406-01-000 (3)
SCREW
000G11-10-16B (6)

HOSE AND SUPPORT SUPPLIED
WITH DISHWASHER
FASTEN SUPPORT APPROX. IN
THIS LOCATION

SINK-GALLEY
173783-01-CHT
STRAINER-SINK
092303-01-000 (2) 8
ANGLE-W/SLOT
140002-01-CHT (10)

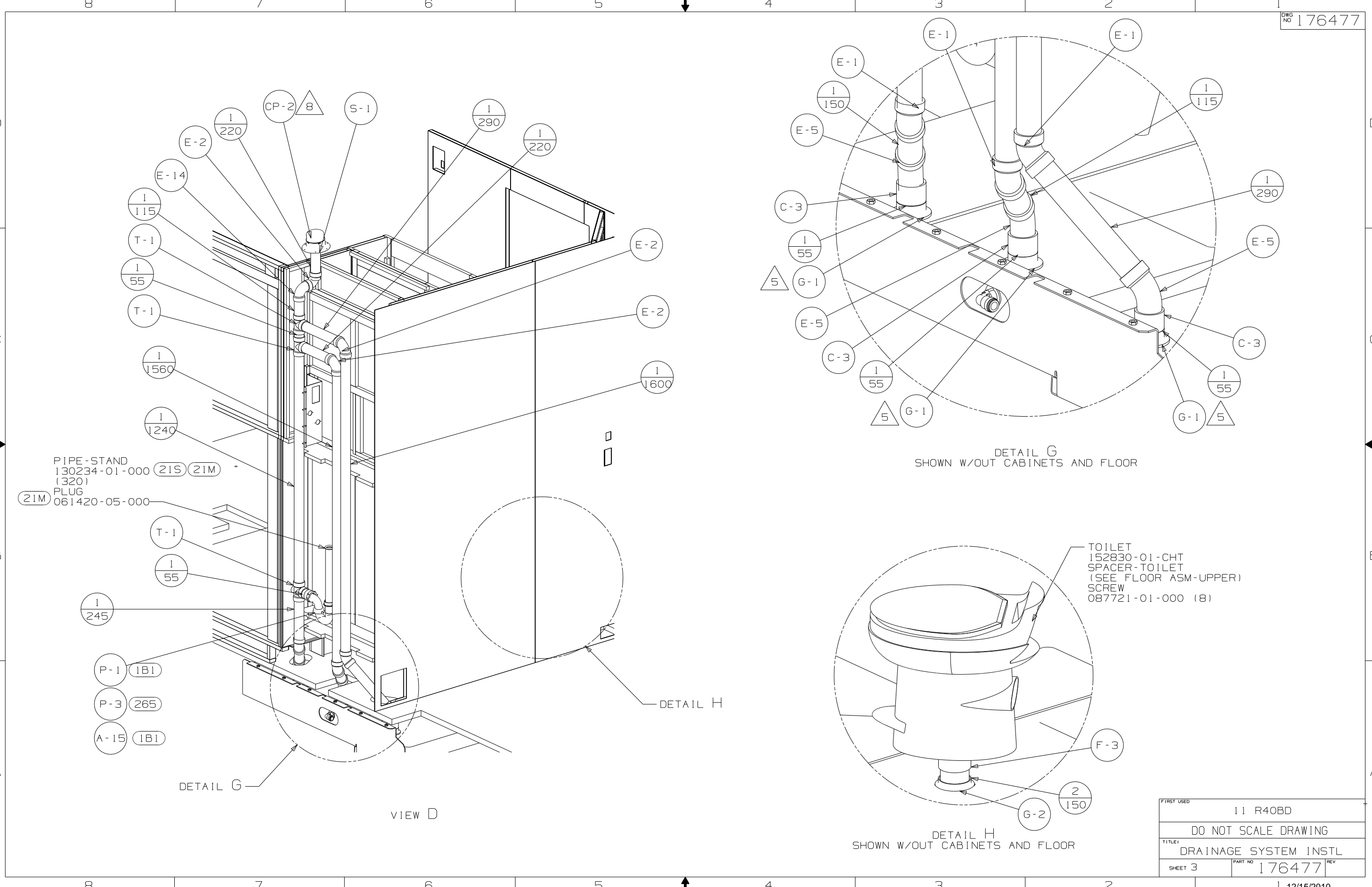


VIEW A

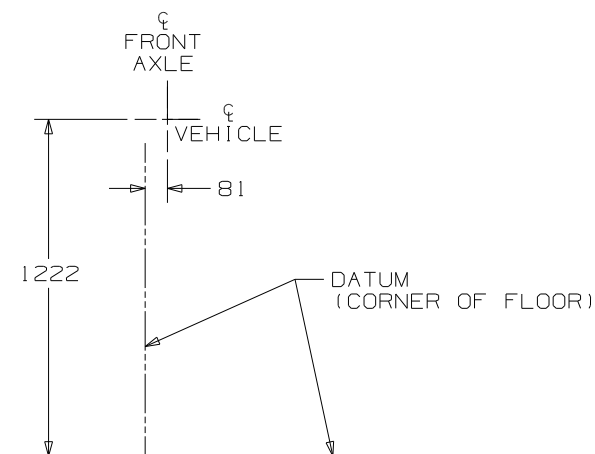
ELBOW
136111-01-000

FITTING
136656-01-CHT
CLAMP-HOSE
062401-02-000
SCREW
000G11-10-16B (4)

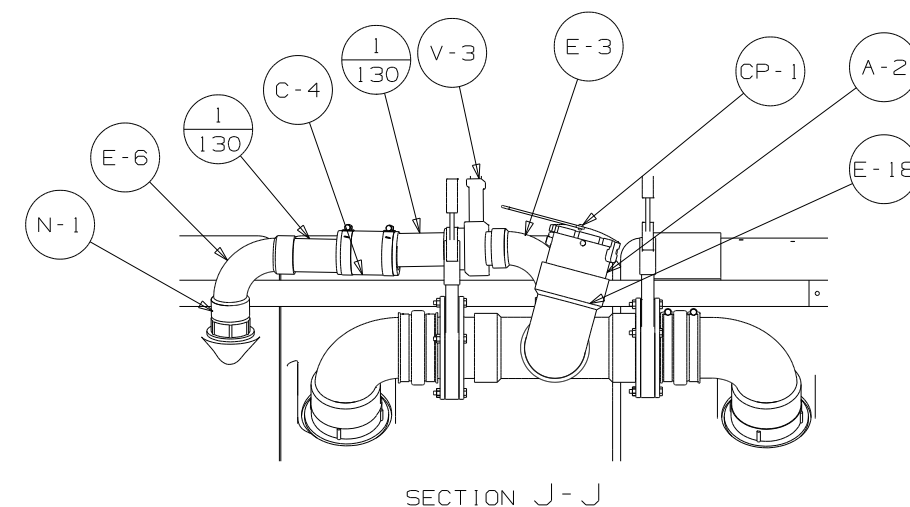
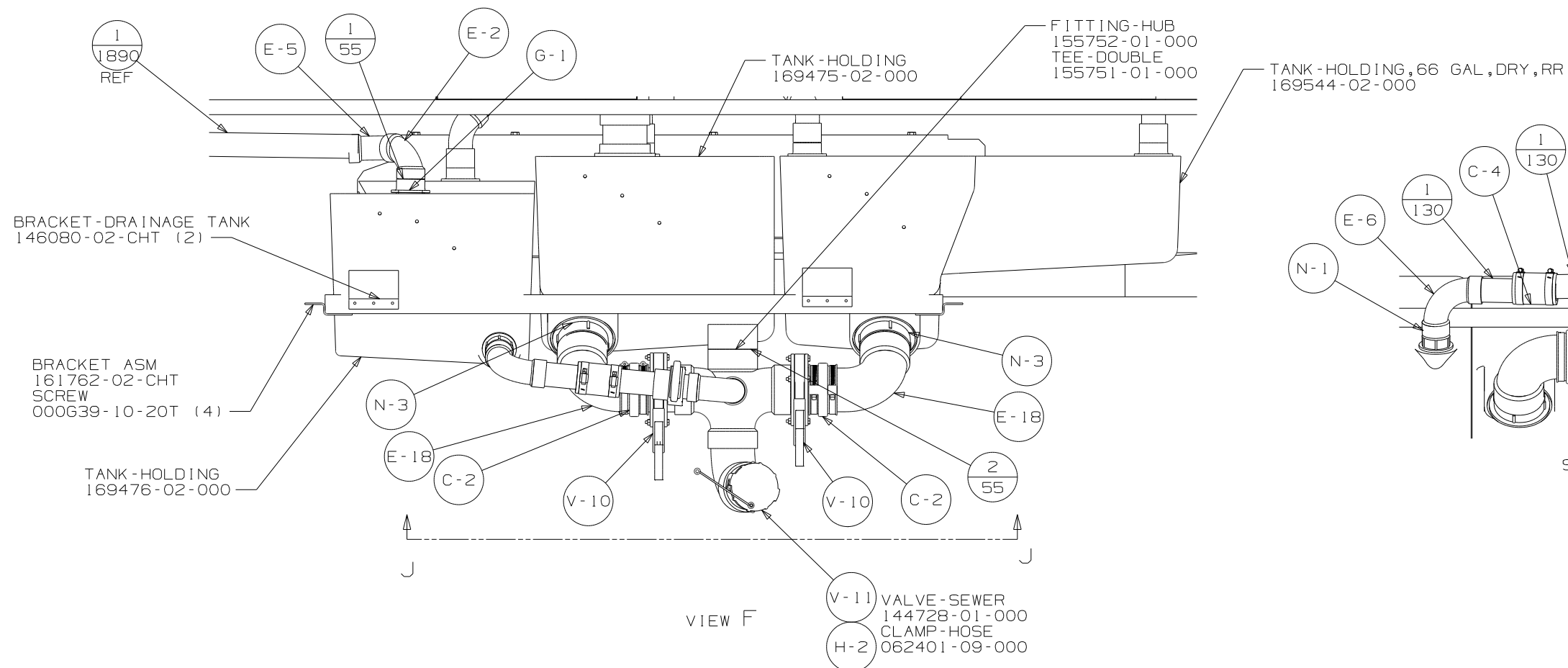
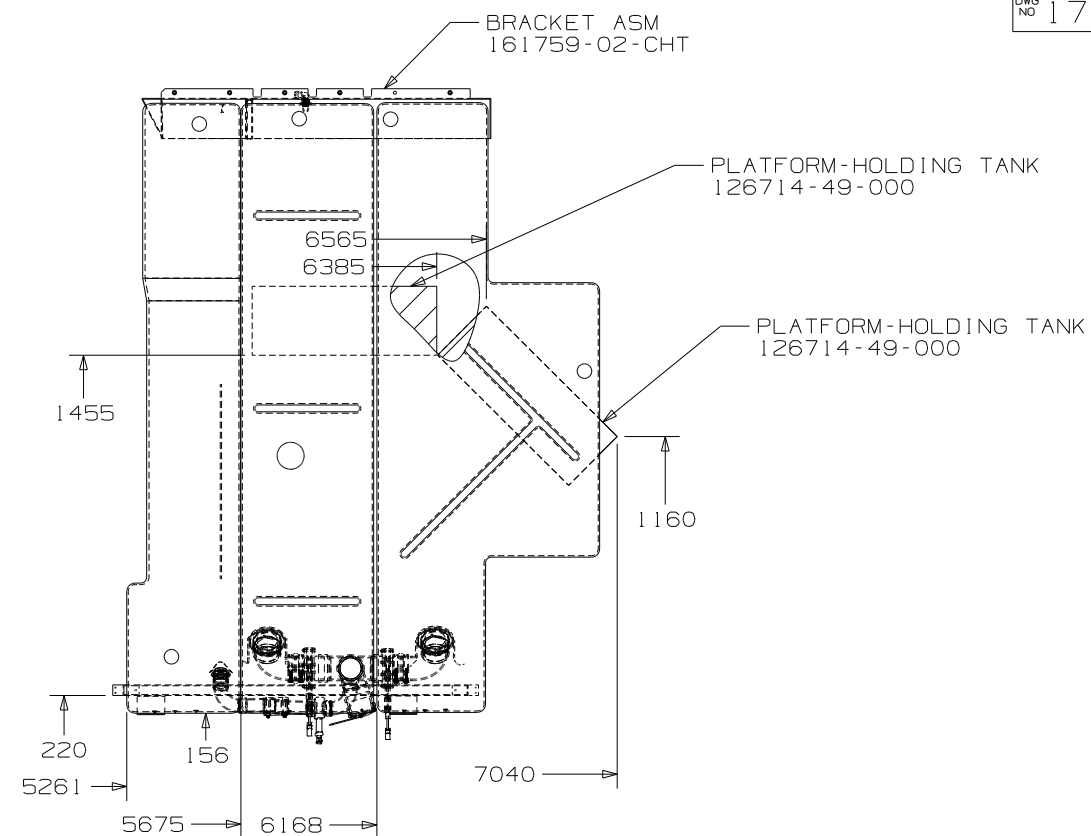
FIRST USED		11 R40BD	
DO NOT SCALE DRAWING			
TITLE: DRAINAGE SYSTEM INSTL			
SHEET 2	PART NO	176477	REV



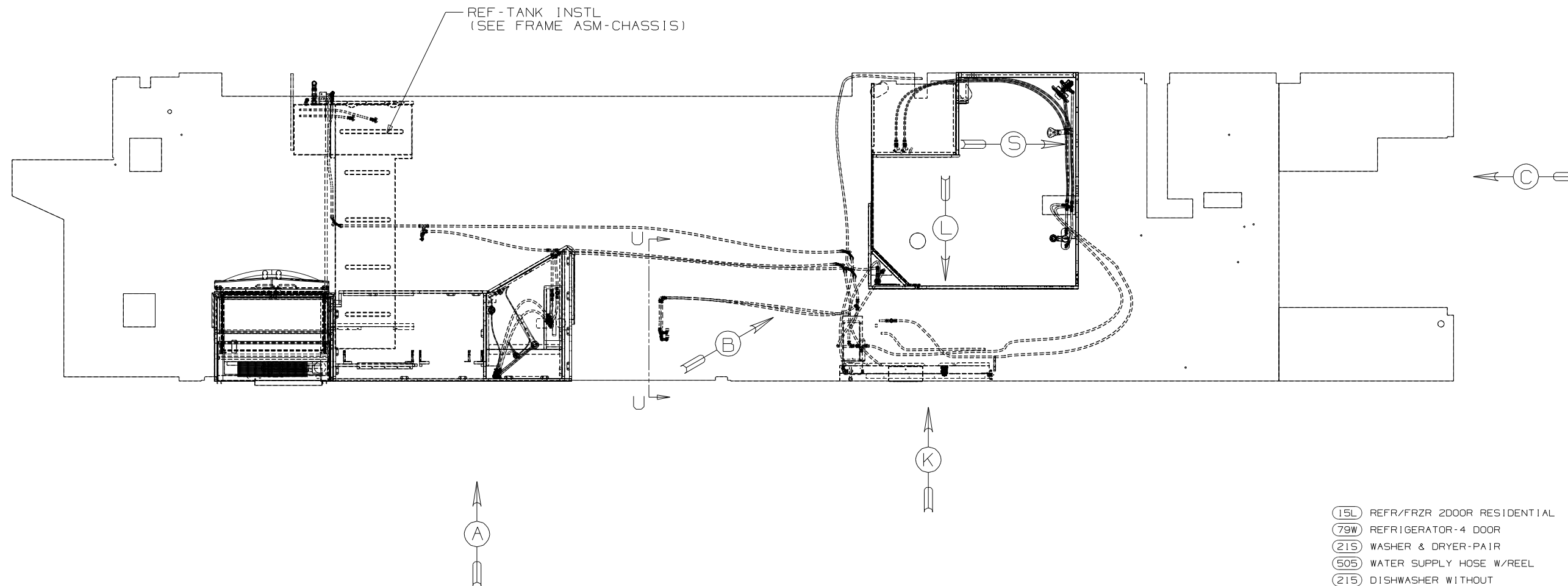
FIRST USED	11 R40BD
TITLE	DO NOT SCALE DRAWING
SHEET 3	DRAINAGE SYSTEM INSTL
PART NO	176477
REV	12/15/2010



VIEW E
(TOP VIEW)



FIRST USED		11 R40BD	
DO NOT SCALE DRAWING			
TITLE: DRAINAGE SYSTEM INSTL			
SHEET 4	PART NO	176477	REV

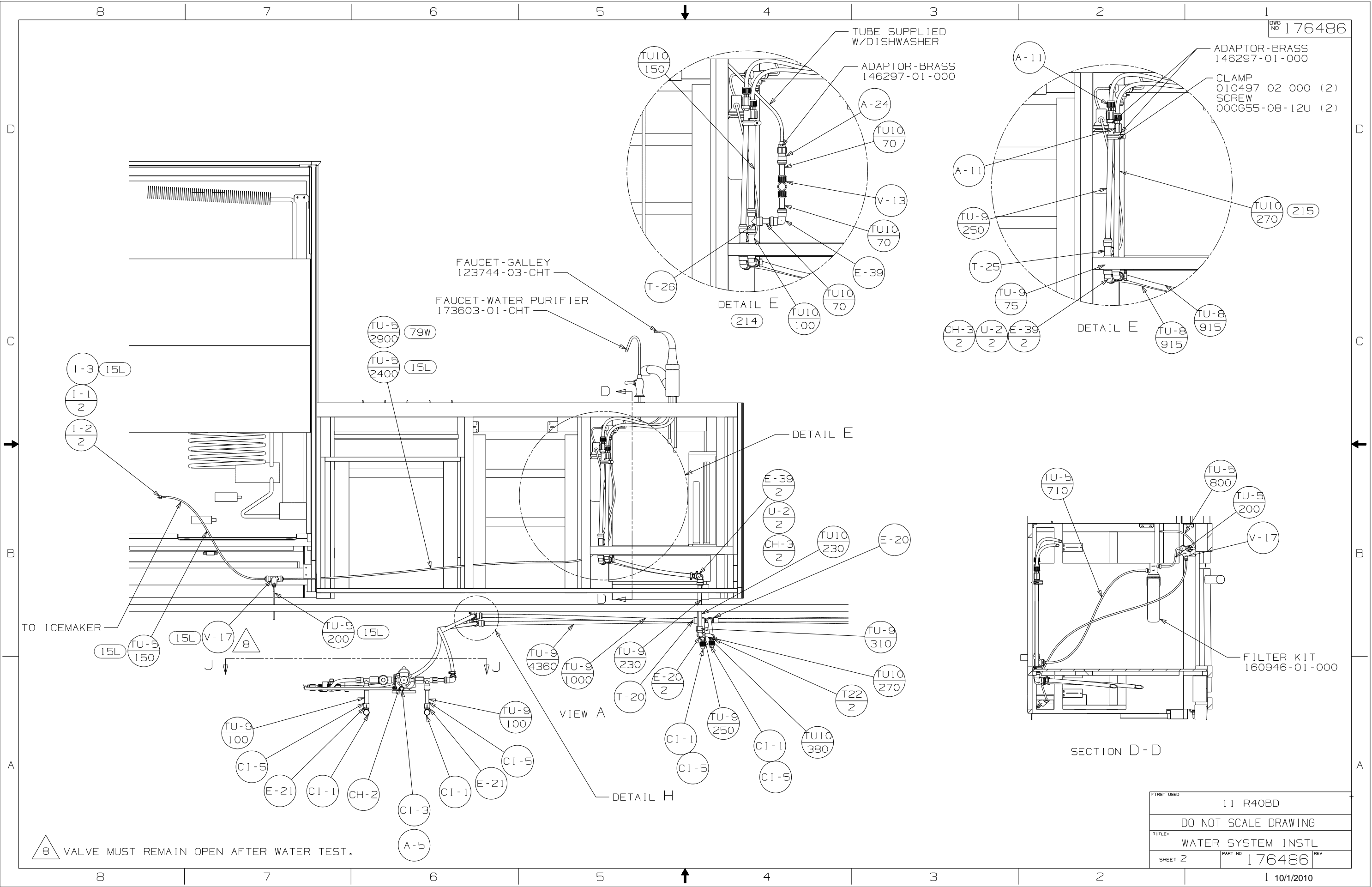


7. ADD PIPE WRAP (LADDER SCRAP 110157-02-000) INSULATION.
6. ADD TEFLON TAPE 010405-03-000.
5. ADD TEFLON TAPE 010405-02-000.
4. ADD TEFLON TAPE 010405-01-000.
3. ALL TUBING TO BE SECURED AT 1200 INTERVALS MAXIMUM WITH CLAMP 010495-01-000 AND SCREW 000667-10-12B OR EQUIVALENT.
2. TUBING TO BE INSTALLED WITH SUFFICIENT SLOPE TO PROVIDE DRAINAGE TO NEAREST VALVE.
1. PLASTIC FITTINGS TO BE SEALED WITH SEALANT 084456-01-000.

NOTES:

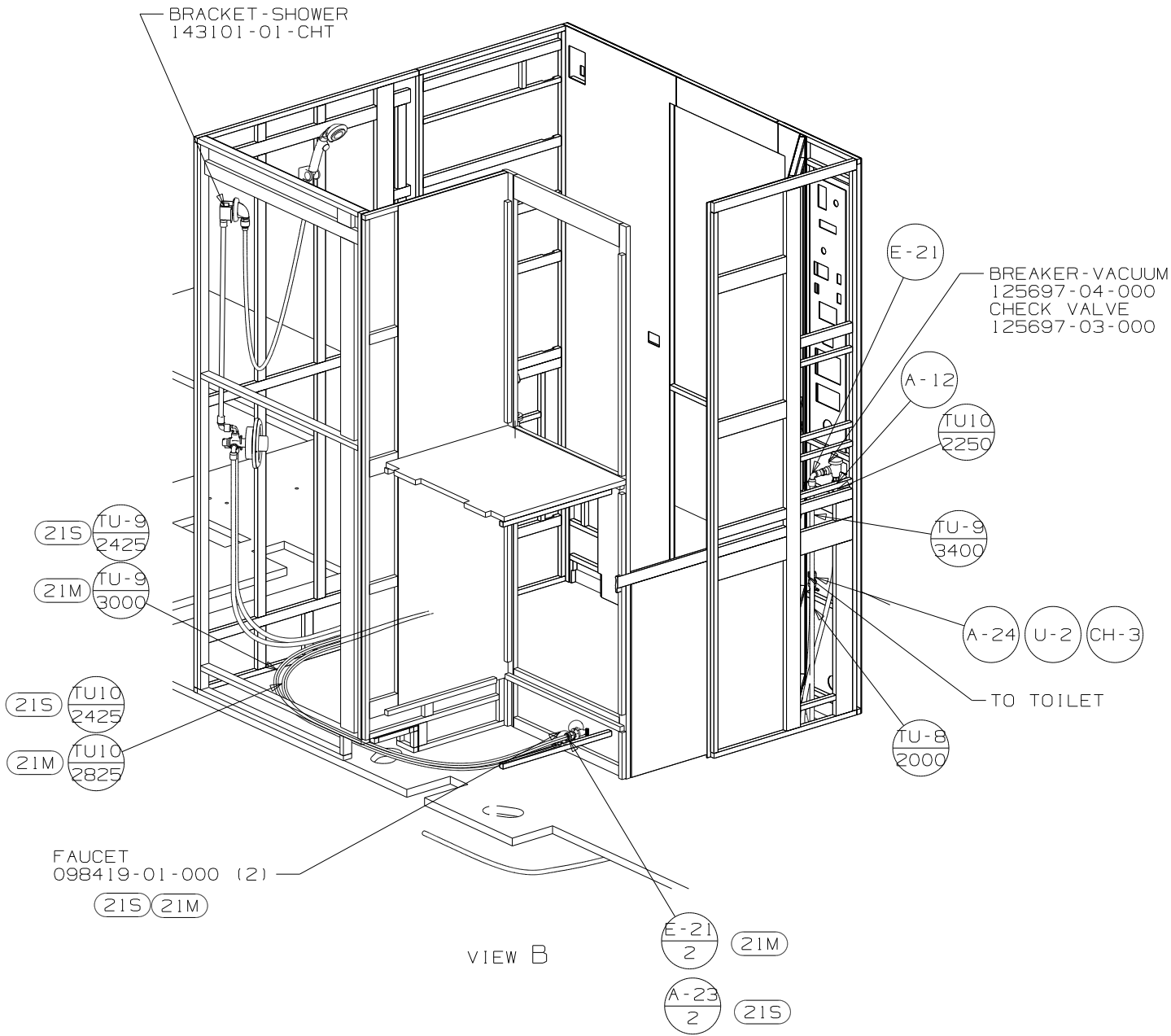
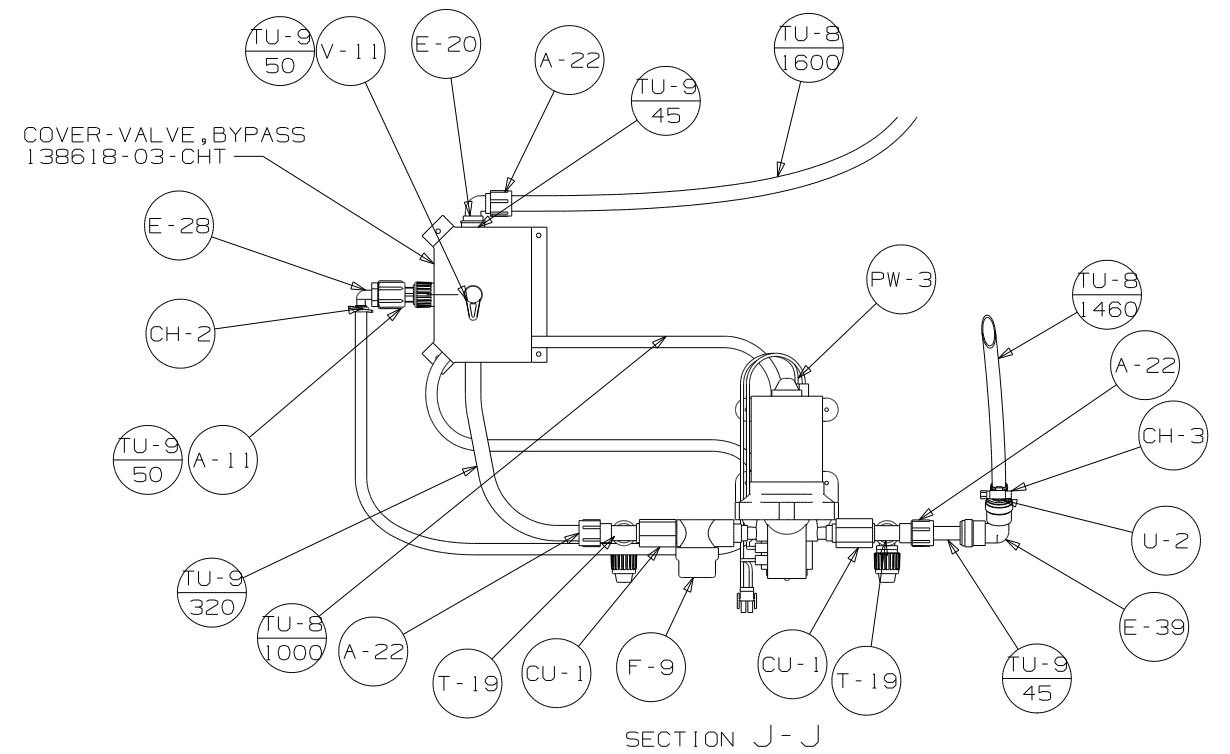
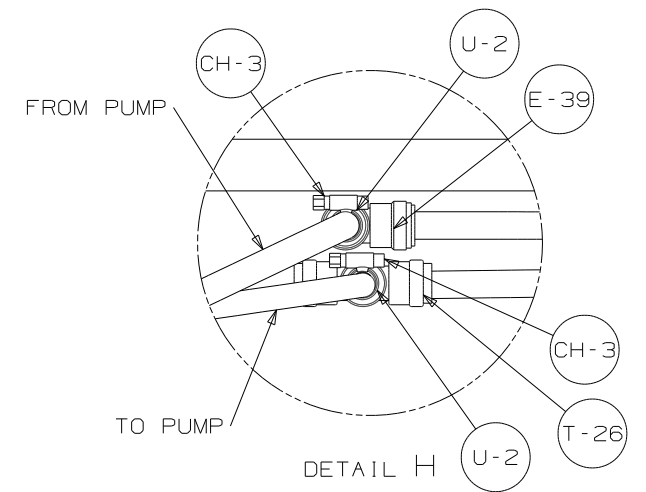
WINNEBAGO		COPYRIGHT 2010 WINNEBAGO INDUSTRIES, INC.	
DFTR	ORIG. DATE		
CHKR	ALL DIMENSIONS ARE IN MILLIMETERS		
P.E.	FIRST USED		
M.E.	11 R40BD		
DSNR			
UNSPECIFIED TOLERANCES ARE:		MATERIAL:	
WHOLE DIM (X) : 3			
ONE-PLACE (X,X) : 1.5			
TWO-PLACE (X,XX) : 0.50			
ANGLE : 1°			
THIRD ANGLE PROJECTION			
DO NOT SCALE DRAWING		REFER TO ES0018 FOR FASTENER TIGHTENING GUIDELINES	
TITLE: WATER SYSTEM INSTL			
SHEET 1 OF 5		PART NO 176486	
REF:		10/1/2010	

FOR
WATER
CALLOUTS
SEE DWG NO
116230-01-000

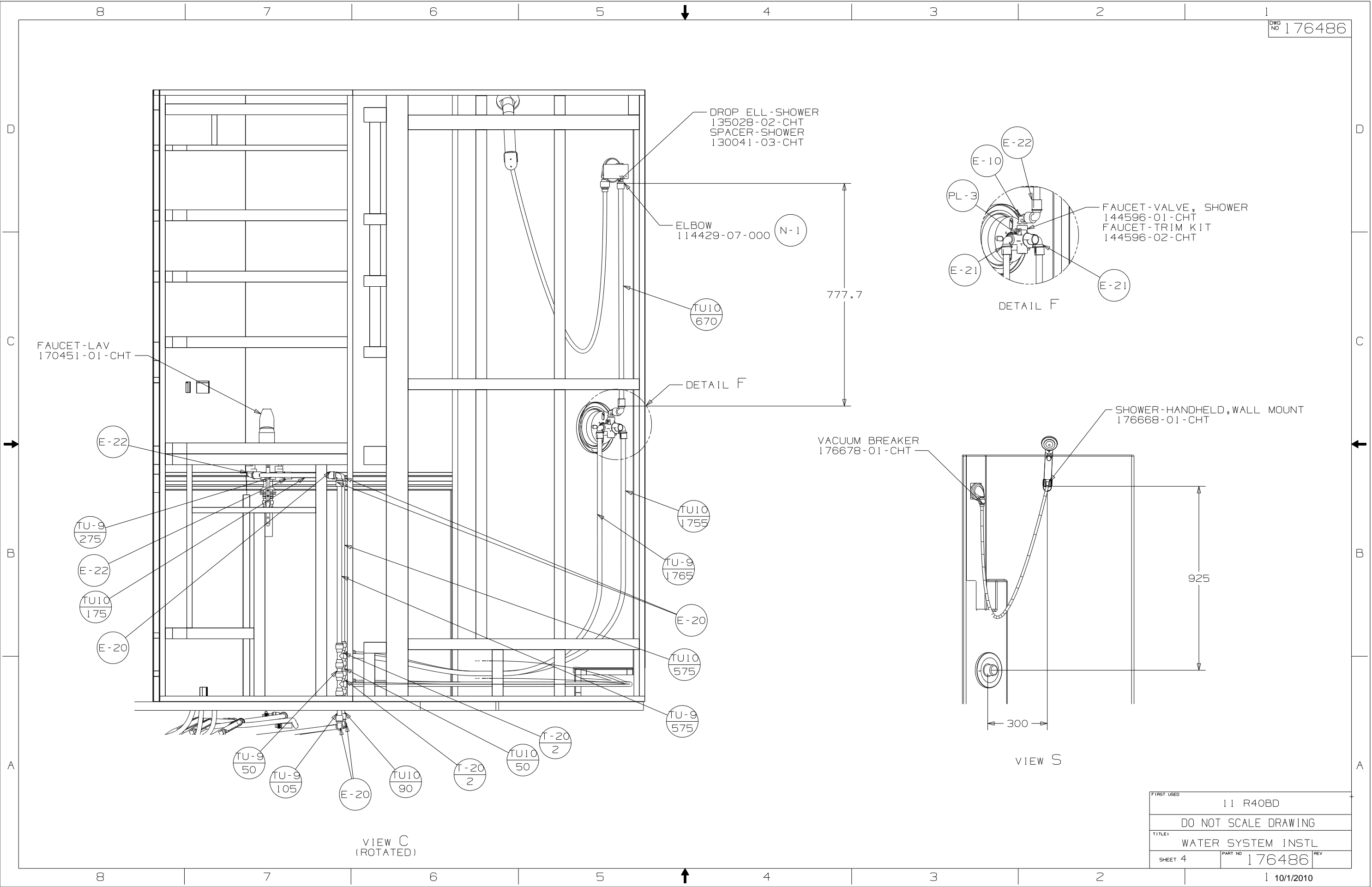


DWG NO 176486

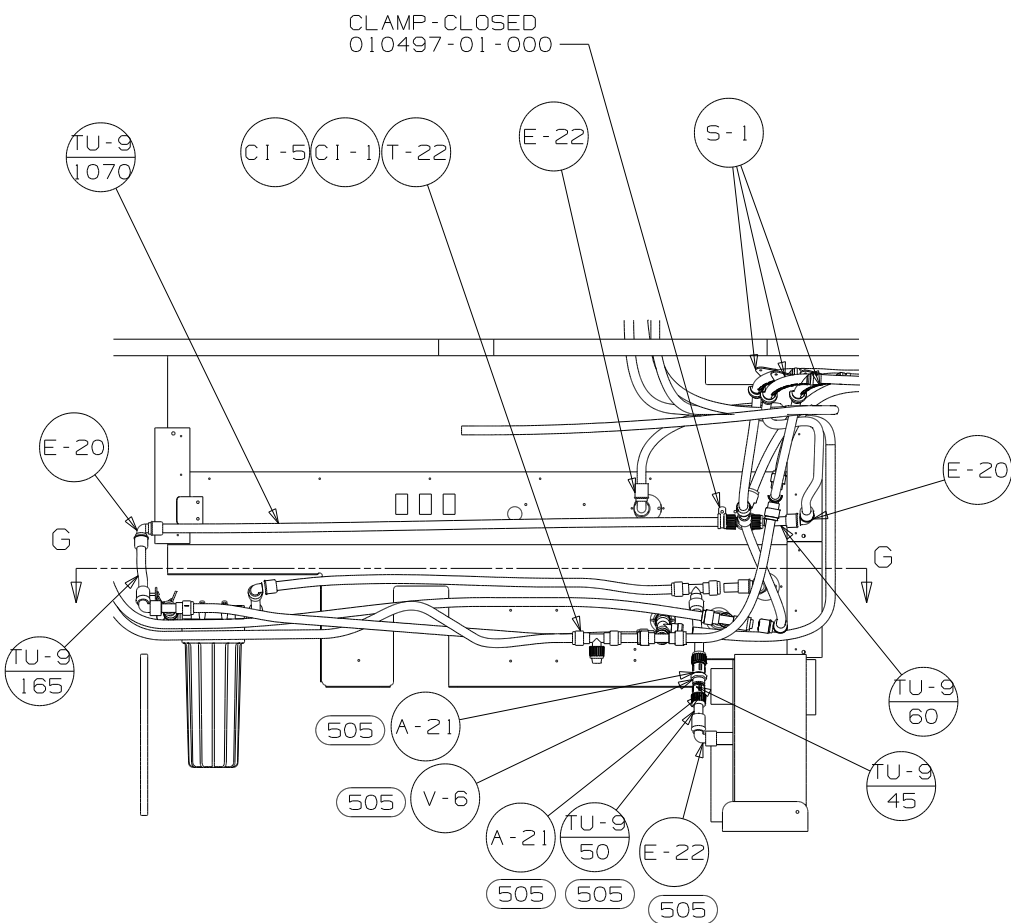
FIRST USED		11 R40BD	
DO NOT SCALE DRAWING			
TITLE: WATER SYSTEM INSTL			
SHEET 2	PART NO	176486	REV



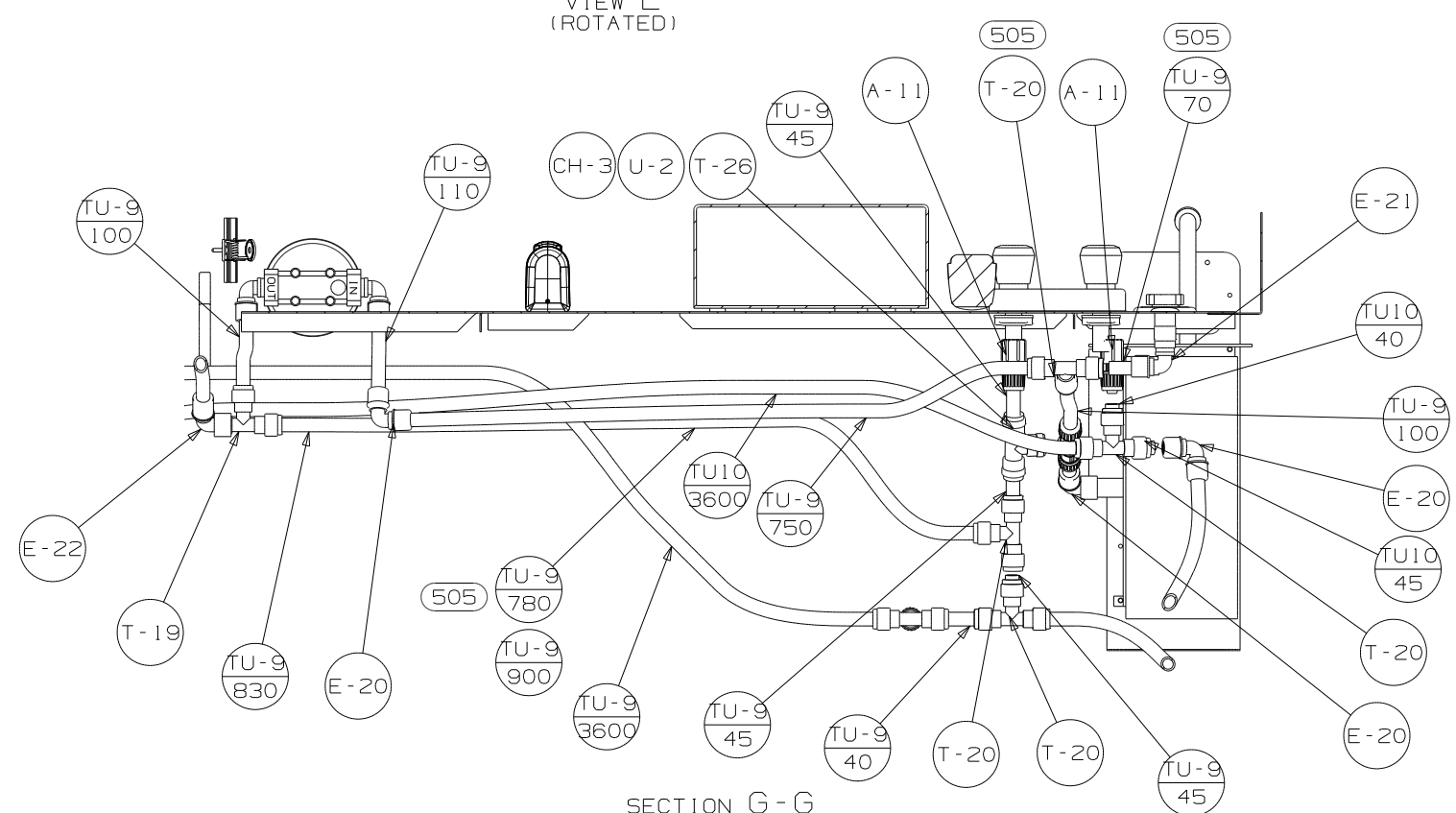
FIRST USED			11 R40BD
DO NOT SCALE DRAWING			
TITLE:			WATER SYSTEM INSTL
SHEET 3	PART NO	176486	REV



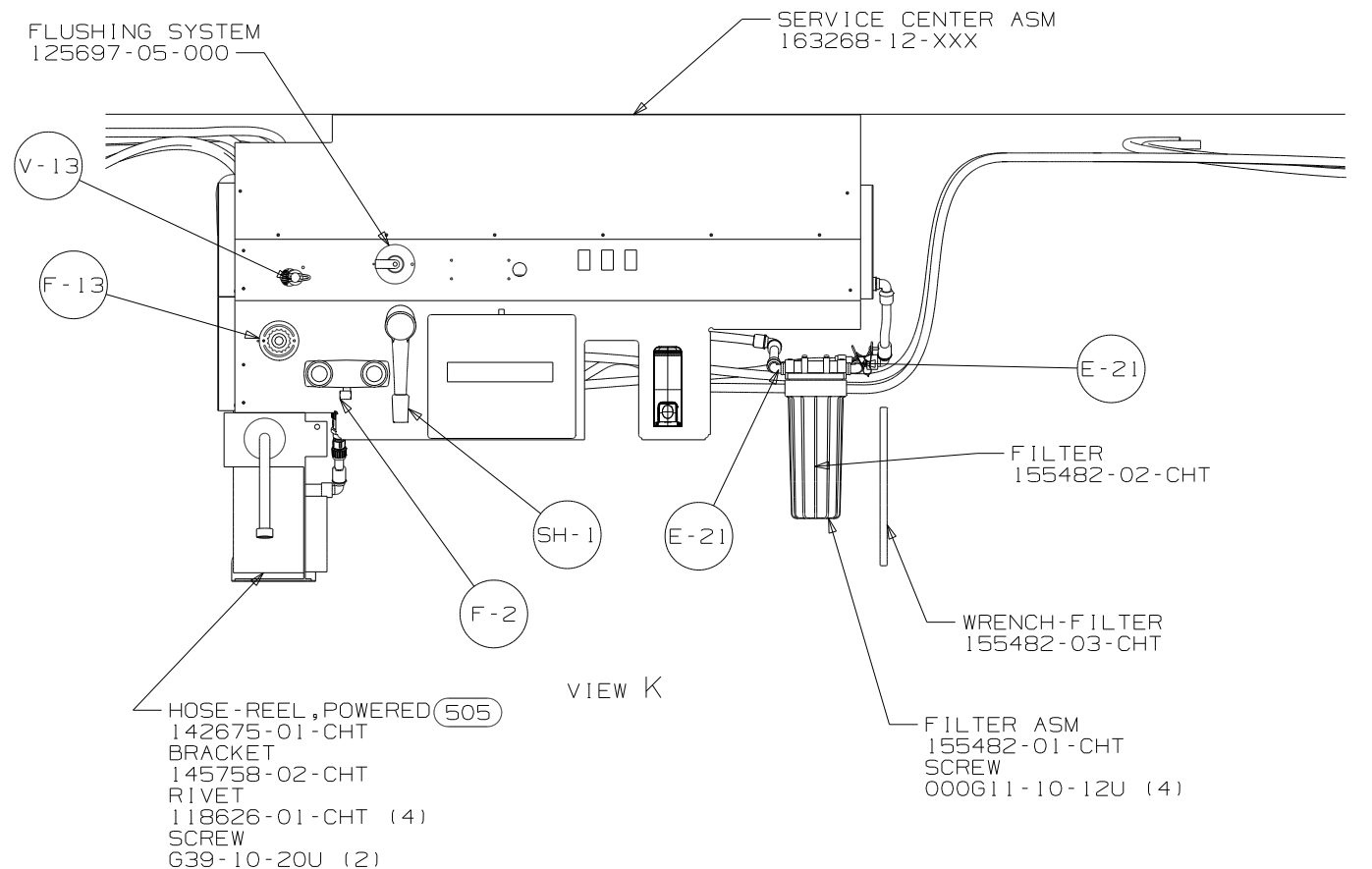
FIRST USED		11 R40BD	
DO NOT SCALE DRAWING			
TITLE: WATER SYSTEM INSTL			
SHEET 4	PART NO	176486	REV



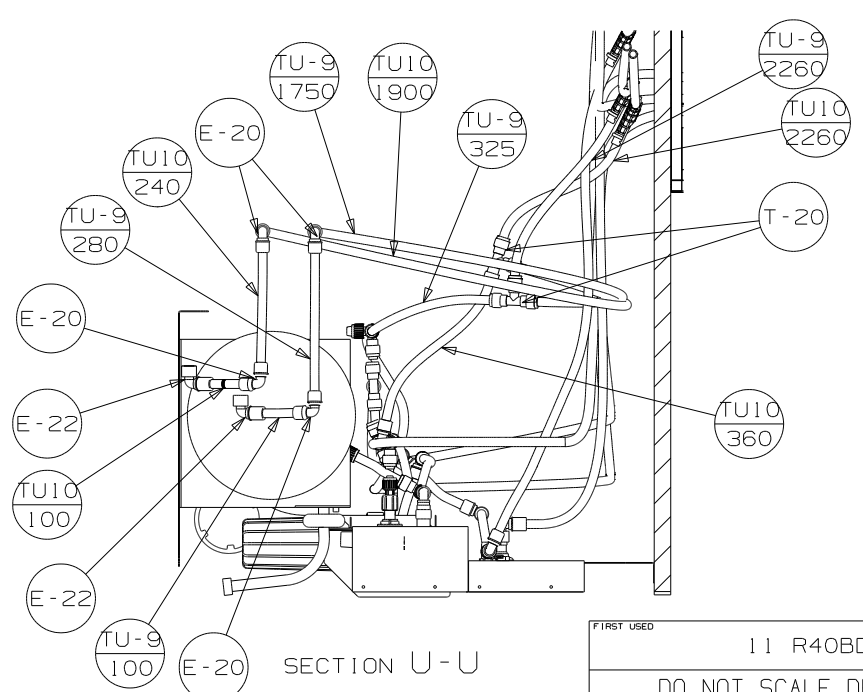
VIEW L
(ROTATED)



SECTION G-G



VIEW K



SECTION U-U

FIRST USED		11 R40BD	
TITLE:		DO NOT SCALE DRAWING	
SHEET 5		176486	
PART NO		176486	
REV		10/1/2010	