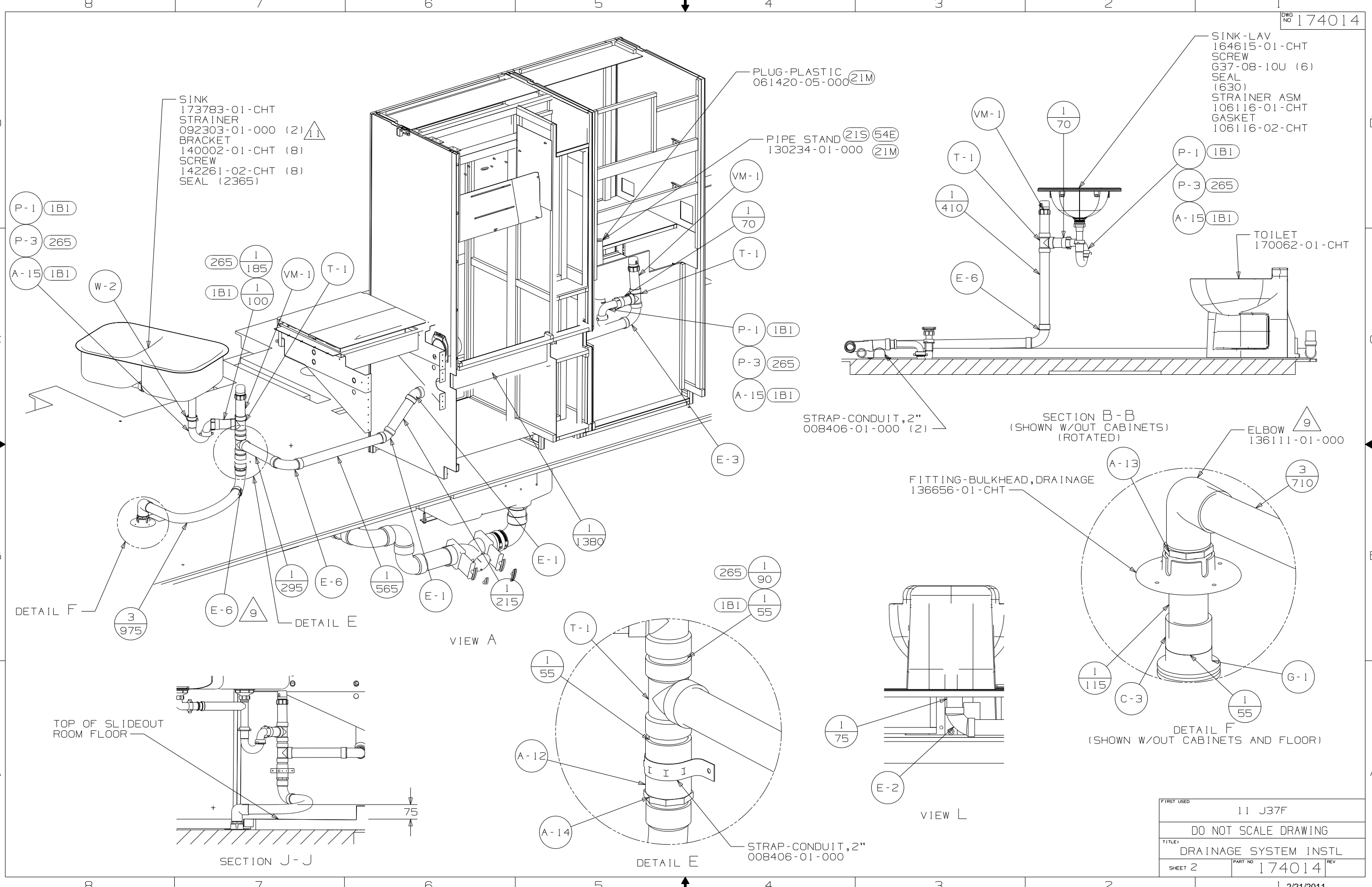


- 1. SLOPE OF HORIZONTAL PIPING TO BE MINIMUM OF 3 PER 305 mm.
- 2. SLOPE OF TRAP ARM MUST BE 6 PER 305 mm.
- 3. ALL PIPE AND FITTINGS TO BE ASSEMBLED WITH SOLVENT 004020-01-000 (USA), 004020-02-000 (CAN)
- 4. GLUE FITTING AFTER CABINET IS INSTALLED.
- 5. SEAL AROUND SHOWER WITH SILICONE.
- 6. VENT PIPE MUST PROJECT 51 MIN AND 64 MAX ABOVE ROOF FOR PROPER FIT AND FUNCTION.
- 7. SECURE VENT PIPE TO FLOOR WITH CLAMP 062401-02-000, SCREW 000G67-10-12B (2), BRACKET 136878-01-CHT.
- 8. SECURE DRAINAGE PIPES TO CABINET USING WIRE TIE 108046-02-000, AND SCREW 000G67-10-12B AT INTERVALS OF NOT MORE THAN 4 FEET APART.
- 9. APPLY PRIMER 126427-02-000 AND CEMENT 126427-01-000 BETWEEN ELBOW AND FLEX PIPE.
- 10. ATTACH TANK BRACKET TO RISER.
- 11. USE SMOOTH PLUMBERS PUTTY 167459-01-000 TO SEAL STRAINER (0.2 PER STRAINER).

(1B1) CODES/STANDARDS USA  
 (265) CODES/STANDARDS-CSA/CMVSS

<b>WINNEBAGO</b>		COPYRIGHT 2011 WINNEBAGO INDUSTRIES, INC.	
DFTR	ORIG. DATE	ALL DIMENSIONS ARE IN MILLIMETERS	
CHKR			
P.E.			
M.E.	FIRST USED		
DSNR		11 J37F	
UNSPECIFIED TOLERANCES ARE:		MATERIAL:	
WHOLE DIM (X)	: 3		
ONE-PLACE (X.X)	: 1.5		
TWO-PLACE (X.XX)	: 0.50		
ANGLE	: 1°		
THIRD ANGLE PROJECTION			
DO NOT SCALE DRAWING		REFER TO ES0018 FOR FASTENER TIGHTENING GUIDELINES	
TITLE: DRAINAGE SYSTEM INSTL			
SHEET 1 OF 4	PART NO 174014	REV	

FOR  
DRAINAGE  
CALLOUTS  
SEE DWG NO  
116229-01-000



SINK  
173783-01-CHT  
STRAINER  
092303-01-000 (2)  
BRACKET  
140002-01-CHT (8)  
SCREW  
142261-02-CHT (8)  
SEAL (2365)

PLUG-PLASTIC  
061420-05-000 (21M)

PIPE STAND  
130234-01-000 (21S) (54E) (21M)

SINK-LAV  
164615-01-CHT  
SCREW  
G37-08-10U (6)  
SEAL  
(630)  
STRAINER ASM  
106116-01-CHT  
GASKET  
106116-02-CHT

STRAP-CONDUIT, 2"  
008406-01-000 (2)

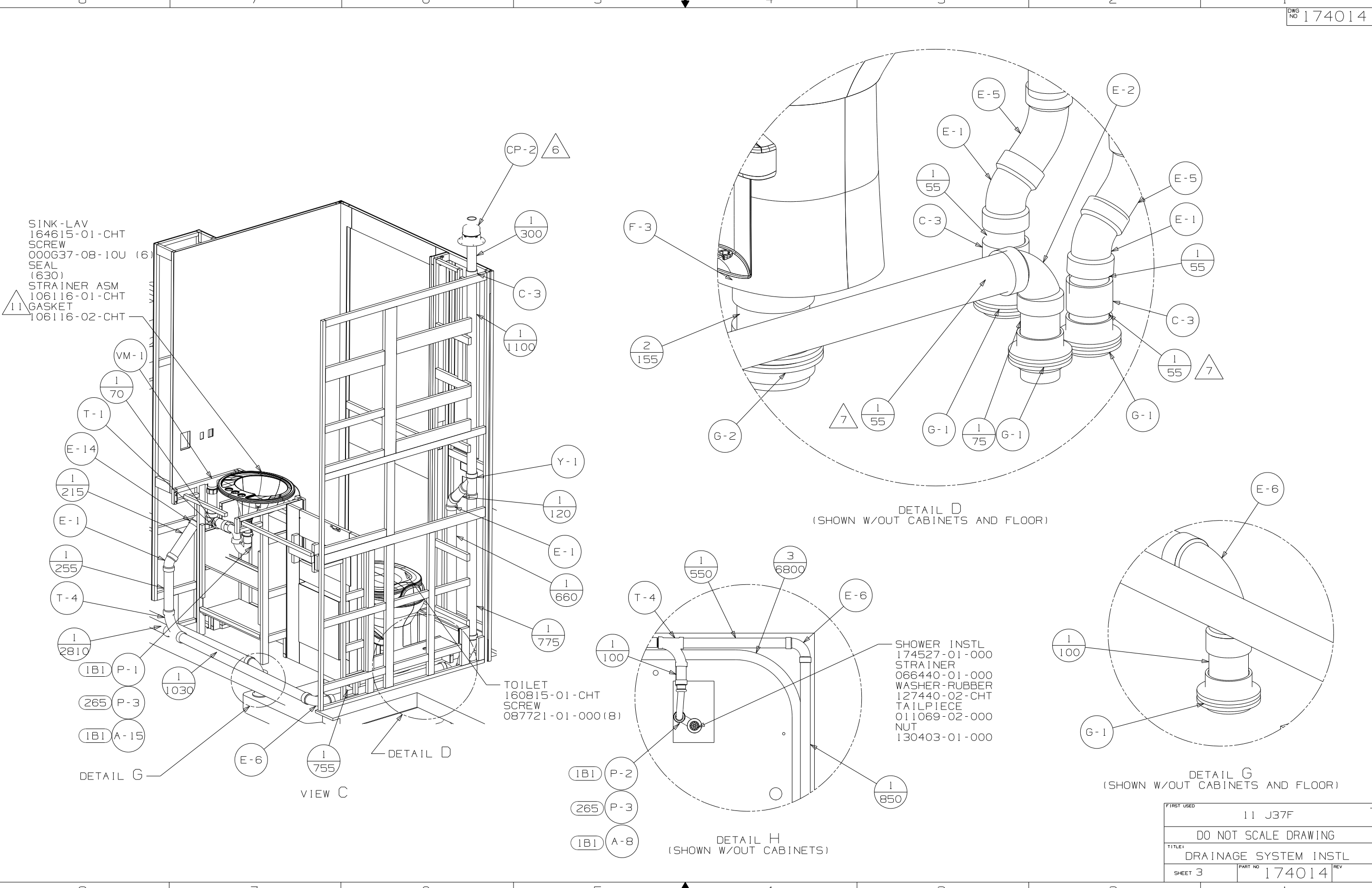
SECTION B-B  
(SHOWN W/OUT CABINETS)  
(ROTATED)

FITTING-BULKHEAD, DRAINAGE  
136656-01-CHT

STRAP-CONDUIT, 2"  
008406-01-000

FIRST USED	11 J37F
TITLE	DO NOT SCALE DRAWING
	DRAINAGE SYSTEM INSTL
SHEET 2	PART NO 174014 REV

SINK-LAV  
 164615-01-CHT  
 SCREW  
 000G37-08-10U (6)  
 SEAL  
 (630)  
 STRAINER ASM  
 106116-01-CHT  
 GASKET  
 106116-02-CHT



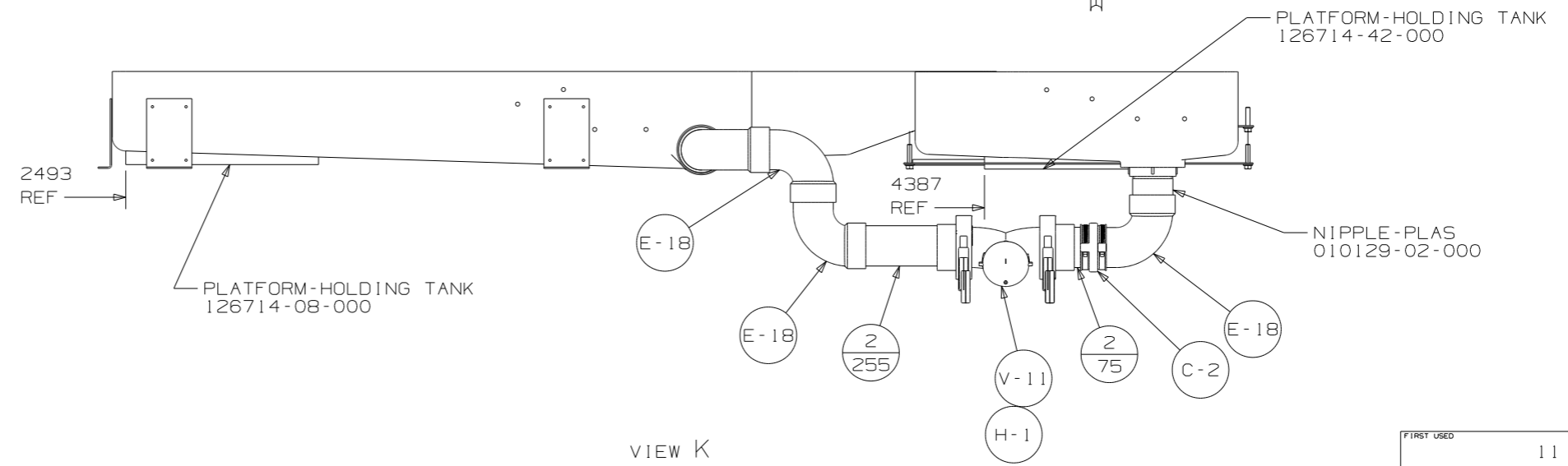
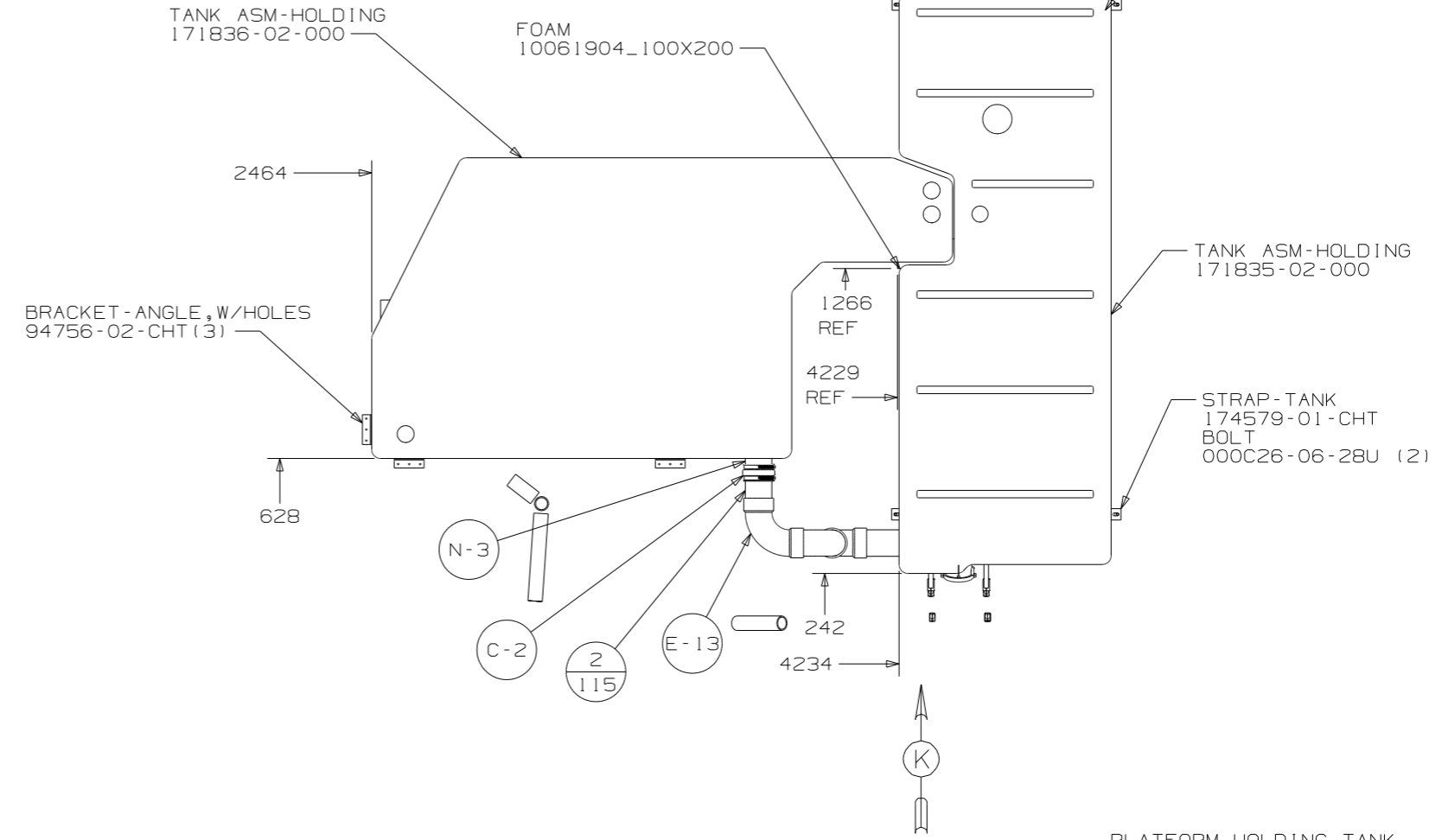
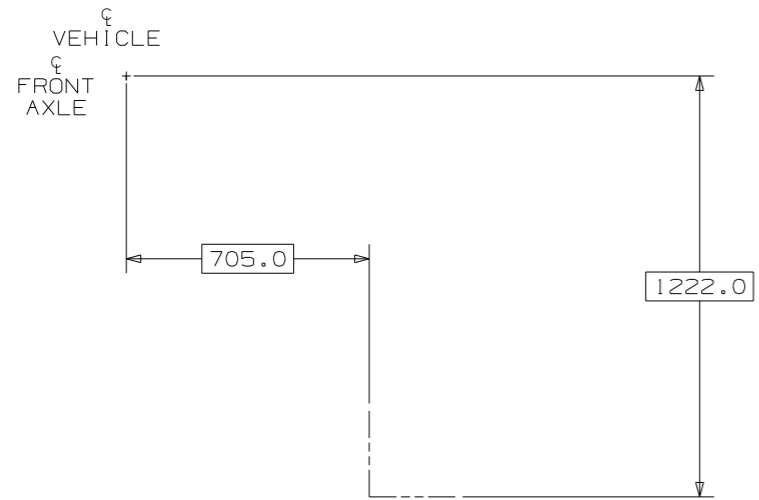
DETAIL D  
 (SHOWN W/OUT CABINETS AND FLOOR)

DETAIL G  
 (SHOWN W/OUT CABINETS AND FLOOR)

DETAIL H  
 (SHOWN W/OUT CABINETS)

VIEW C

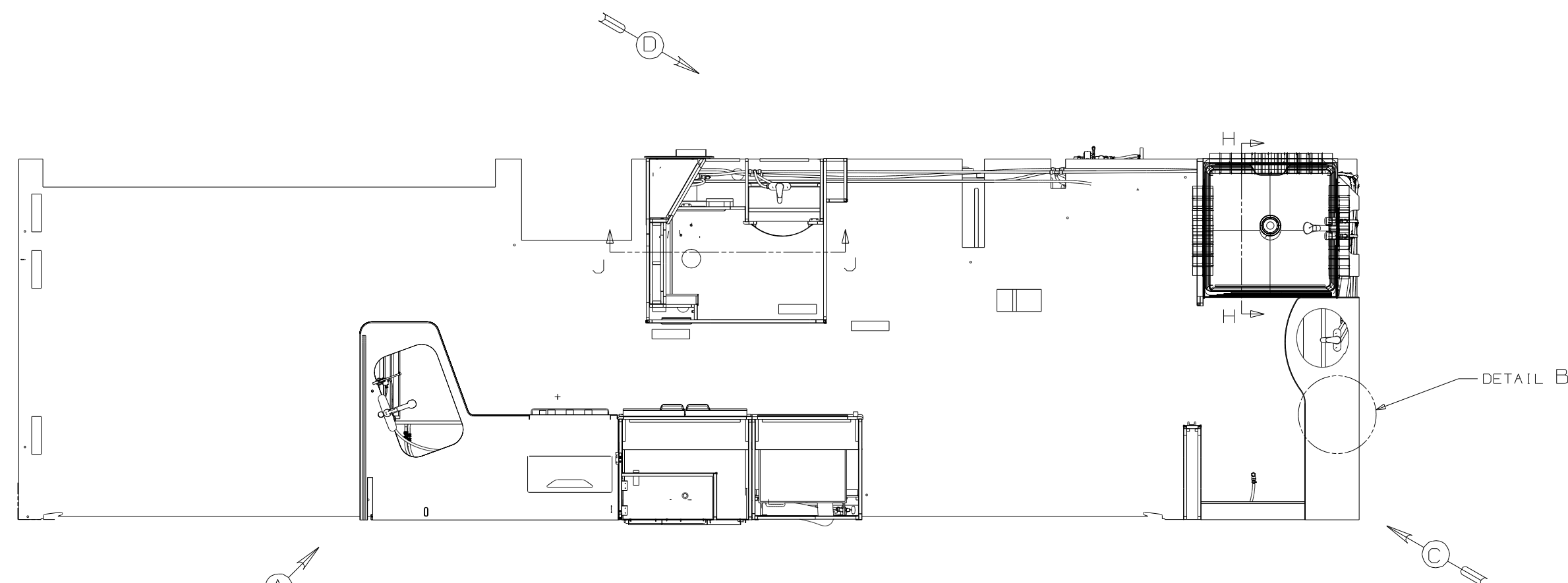
FIRST USED	11 J37F	
TITLE	DO NOT SCALE DRAWING	
	DRAINAGE SYSTEM INSTL	
SHEET 3	PART NO	174014
	REV	



VIEW K

FIRST USED	11 J37F	
TITLE:	DO NOT SCALE DRAWING	
	DRAINAGE SYSTEM INSTL	
SHEET 4	PART NO 174014	REV

RELEASE	REV/DATE	DWG NO	174013
REV ZONE	REVISION RECORD	DATE	DFTR-ORIG
B	SHEET 3: 1" IN DETAIL F DELETE TU-9 4225 CALLOUT	11/3/09	7524-0428

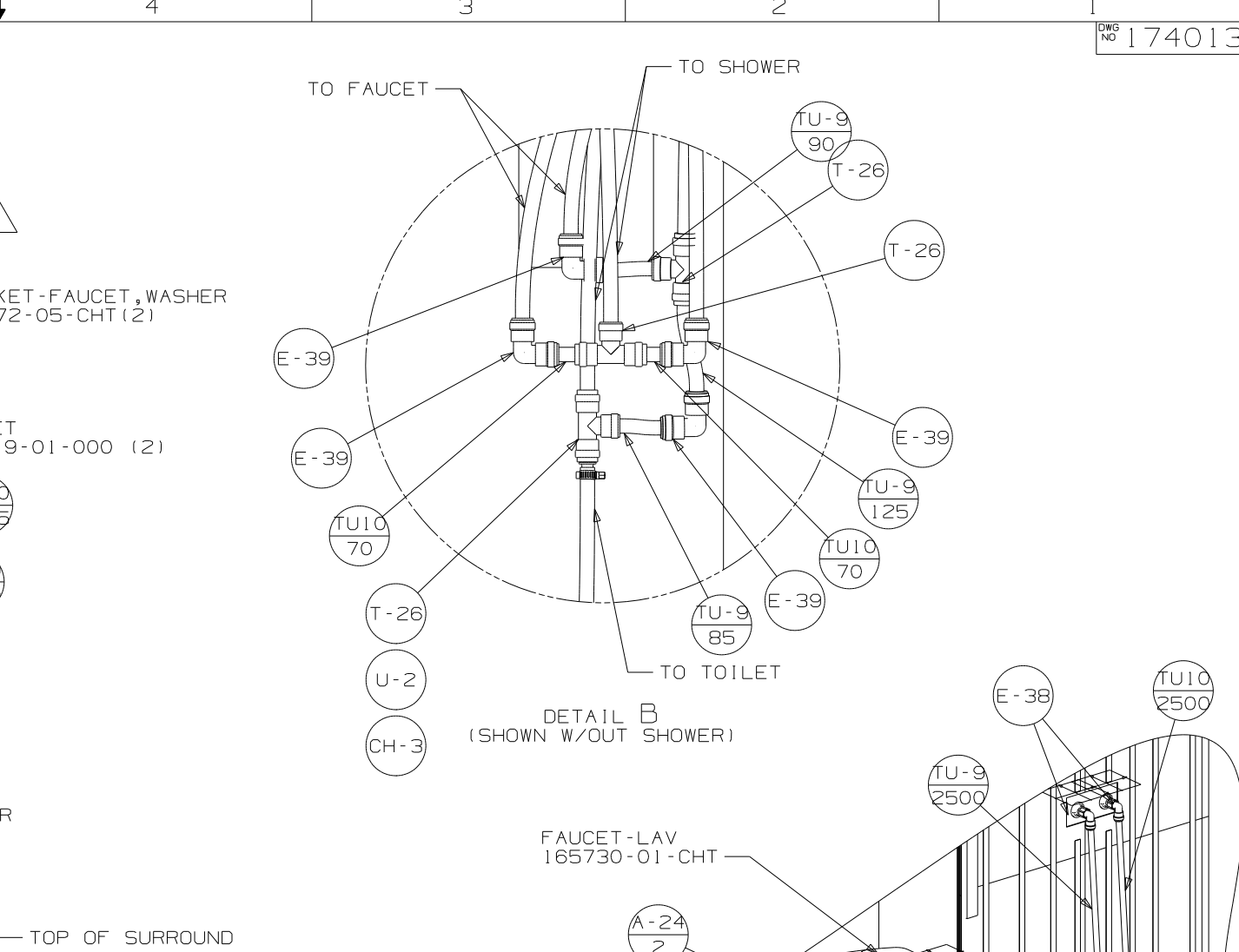
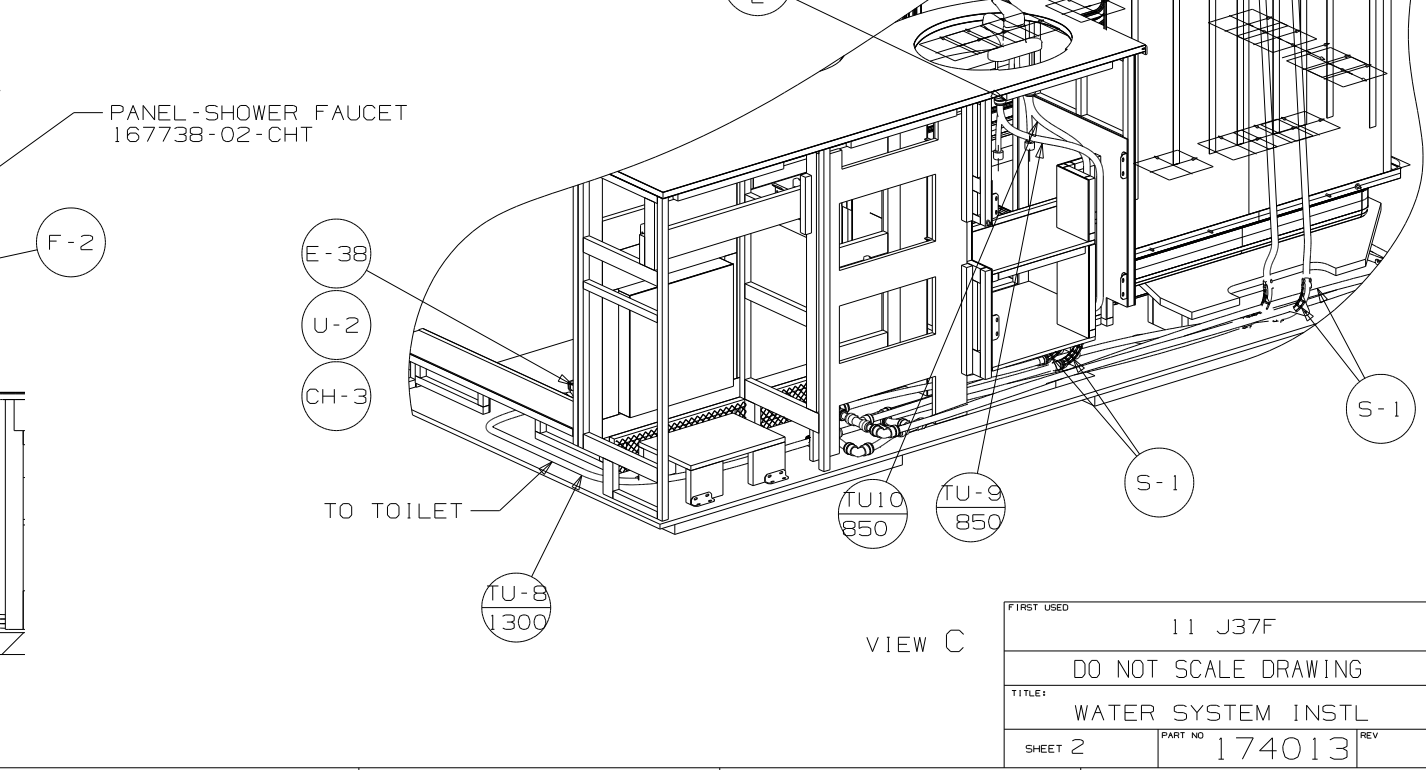
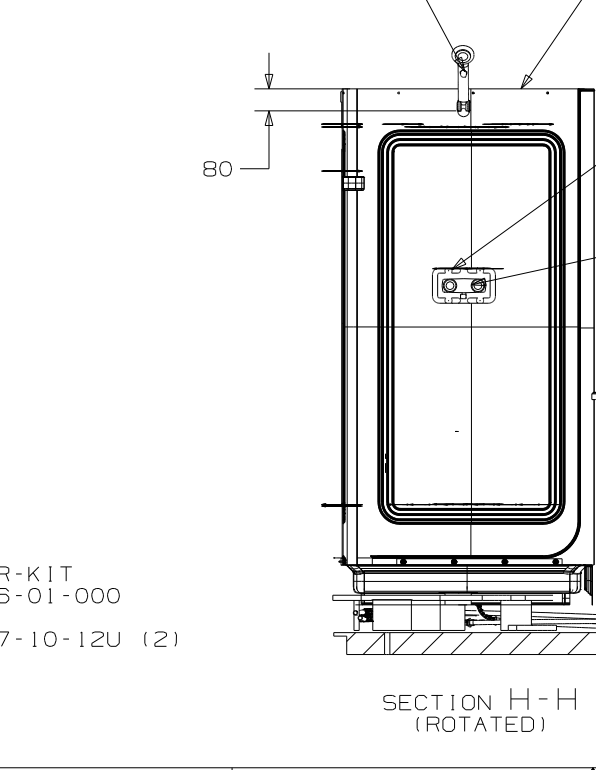
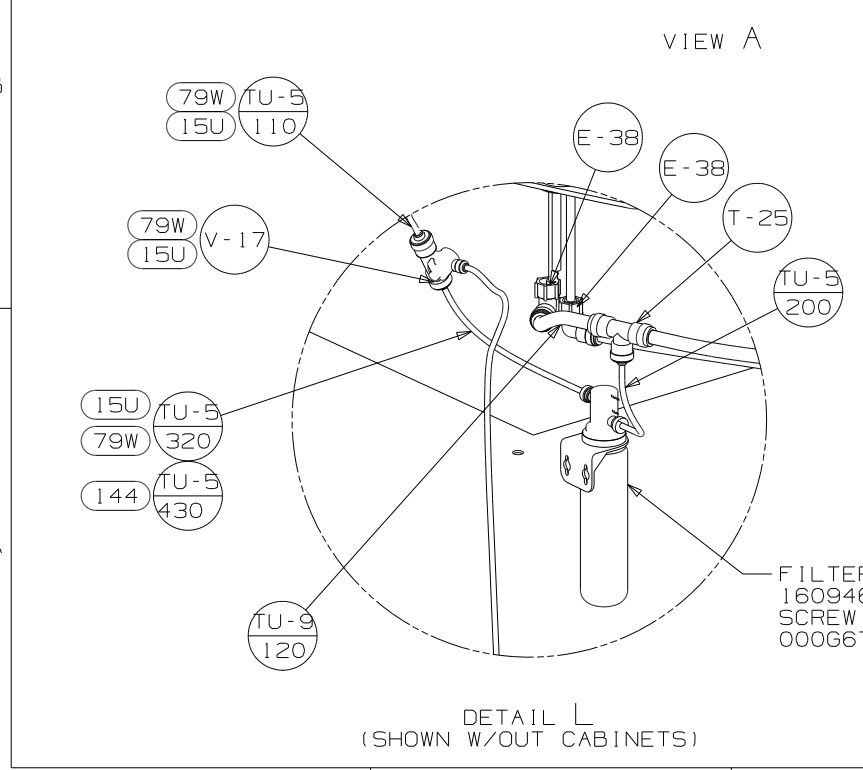
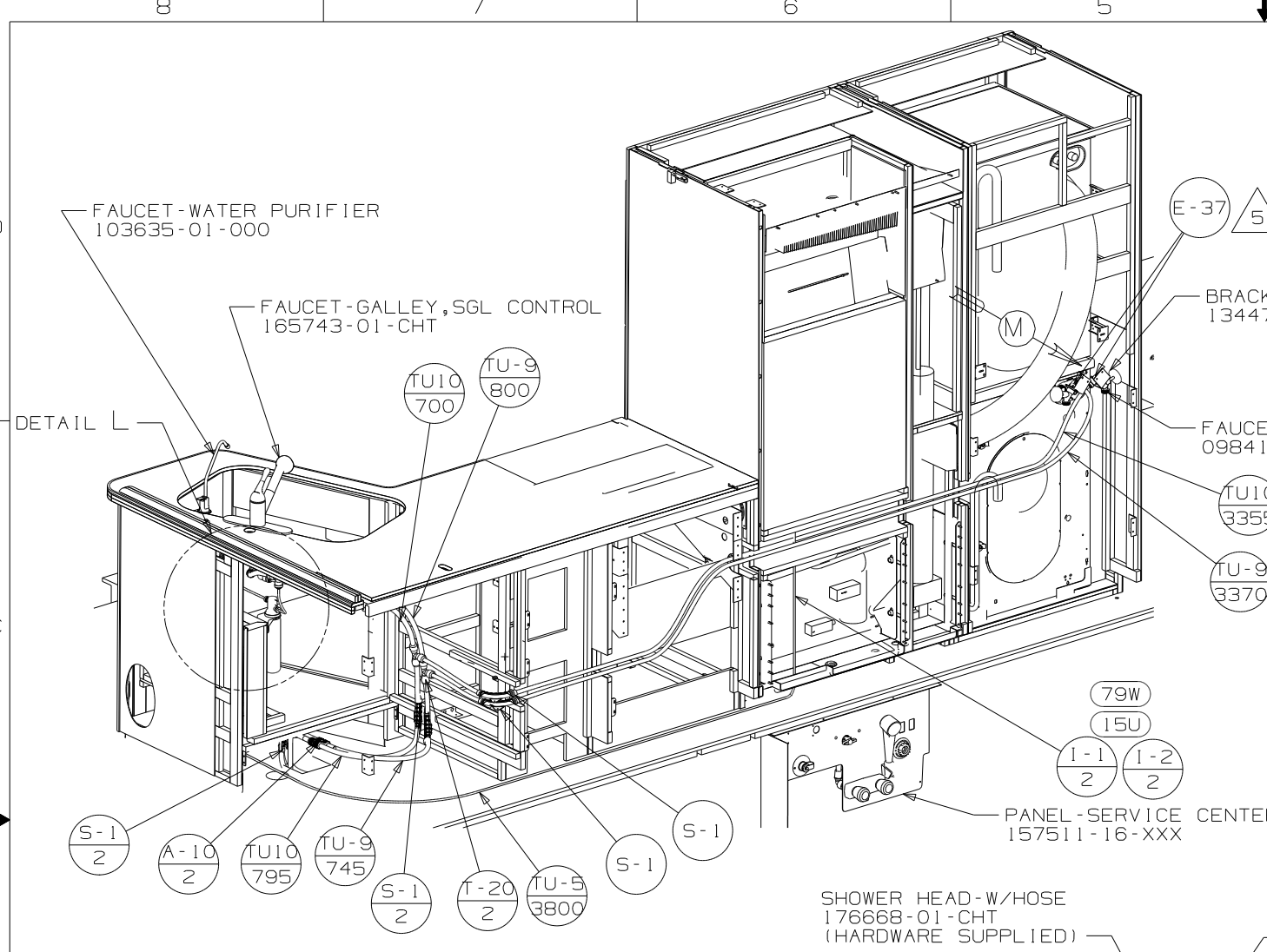


- (144) REFRIGERATOR-DOUBLE DOOR
- (15U) REFRIGERATOR/FRZR-W/ICEMAKER
- (29B) WATER PURIFIER
- (1B2) WTR HTR-10 GAL/ELEC/LP/MTR/ID
- (53E) WATER SYS WINTERIZATION PKG

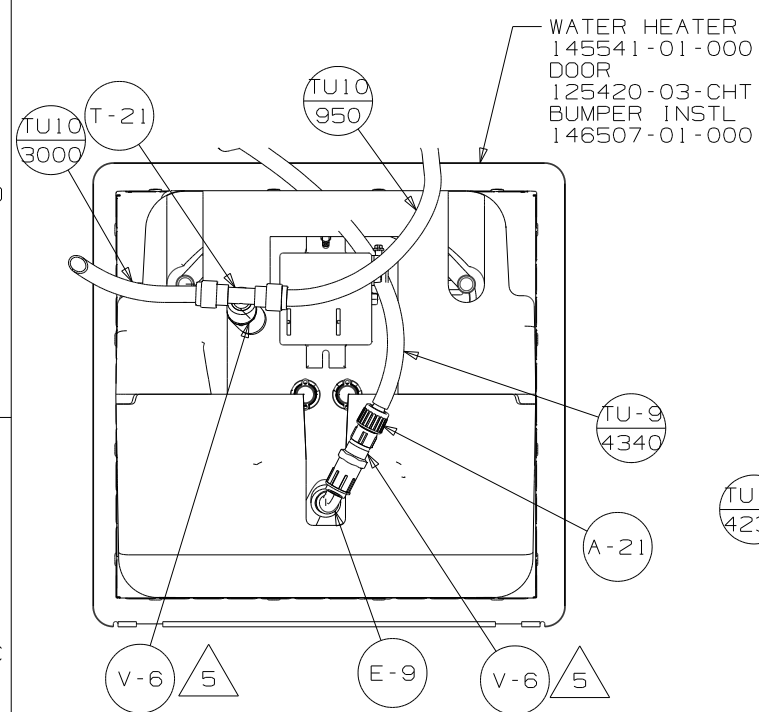
- NOTES:
- 6 USE IN PLACE OF SUPPLIED SCREWS TO ATTACH BRACKET TO WALL.
  - 5 ADD TEFLON TAPE 010405-02-000.
  - 4 ADD TEFLON TAPE 010405-01-000.
  - 3. ALL TUBING TO BE SECURED AT 1200 INTERVALS MAXIMUM WITH CLAMP 010495-01-000 AND SCREW 000667-10-12B OR EQUIVALENT.
  - 2. TUBING TO BE INSTALLED WITH SUFFICIENT SLOPE TO PROVIDE DRAINAGE TO NEAREST VALVE.
  - 1. PLASTIC FITTINGS TO BE SEALED WITH SEALANT 084456-01-000.

FOR  
WATER  
CALLOUTS  
SEE DWG NO  
116230-01-000

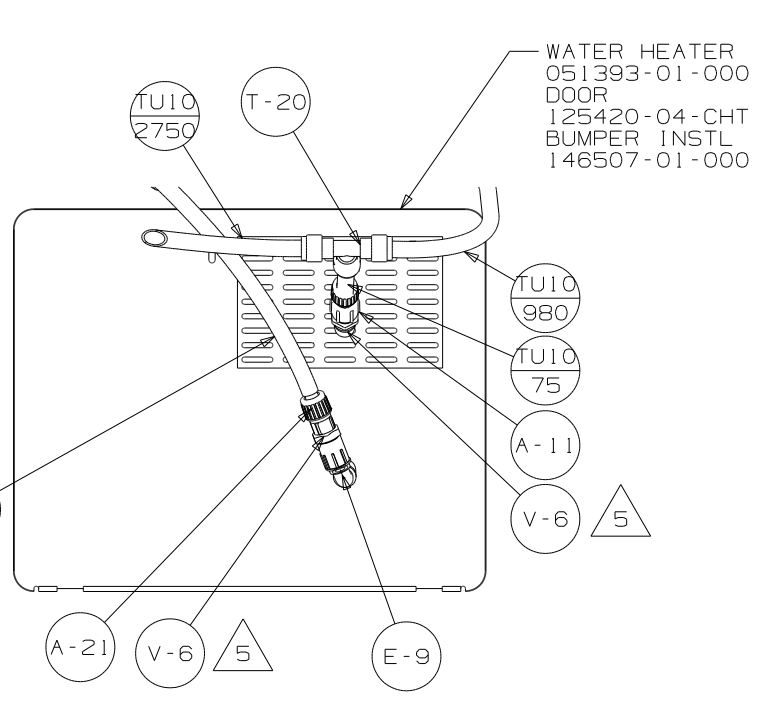
<b>WINNEBAGO</b>		COPYRIGHT 2010 WINNEBAGO INDUSTRIES, INC.	
DFTR	ORIG. DATE	ALL DIMENSIONS ARE IN MILLIMETERS	
CHKR		11 J37F	
P.E.		FIRST USED	
M.E.			
DSNR			
UNSPECIFIED TOLERANCES ARE:		MATERIAL:	
WHOLE DIM (X)	: 3		
ONE-PLACE (X.X)	: 1.5		
TWO-PLACE (X.XX)	: 0.50		
ANGLE	: 1°		
THIRD ANGLE PROJECTION			
DO NOT SCALE DRAWING		REFER TO ES0018 FOR FASTENER TIGHTENING GUIDELINES	
TITLE: WATER SYSTEM INSTL			
SHEET 1 OF 4	PART NO	174013	REV
REF:	1 9/1/2010		



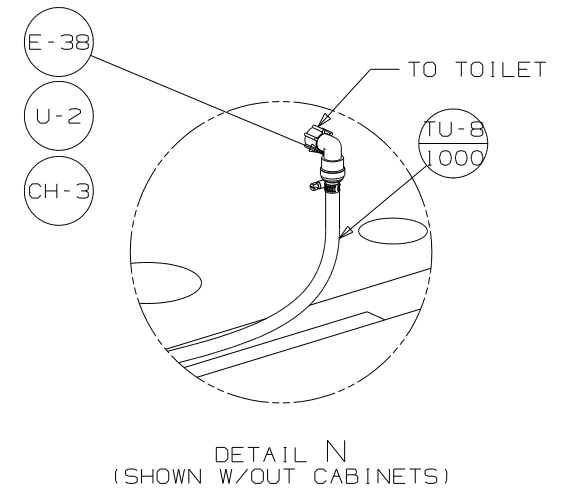
FIRST USED	11 J37F	
TITLE	DO NOT SCALE DRAWING	
TITLE	WATER SYSTEM INSTL	
SHEET 2	PART NO	174013
REV		



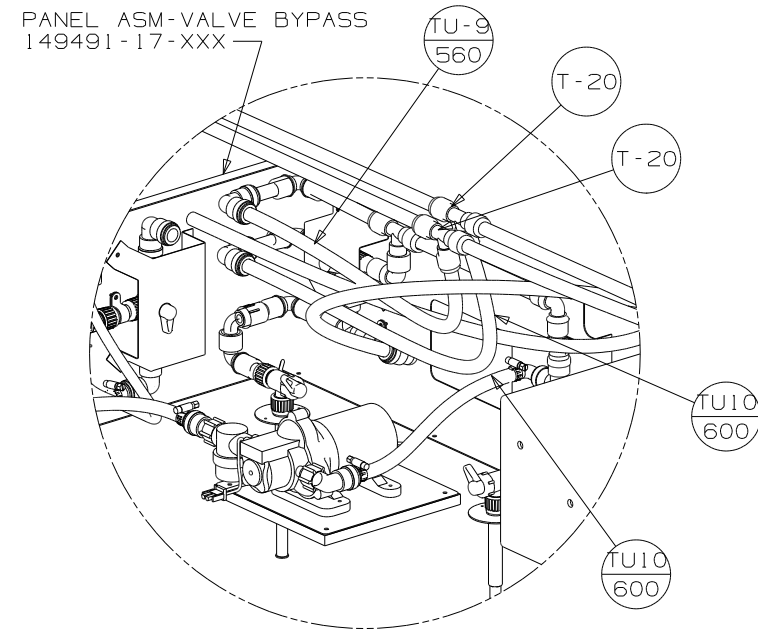
SECTION J-J  
(SHOWN W/OUT ACCESS PANEL)  
IB2



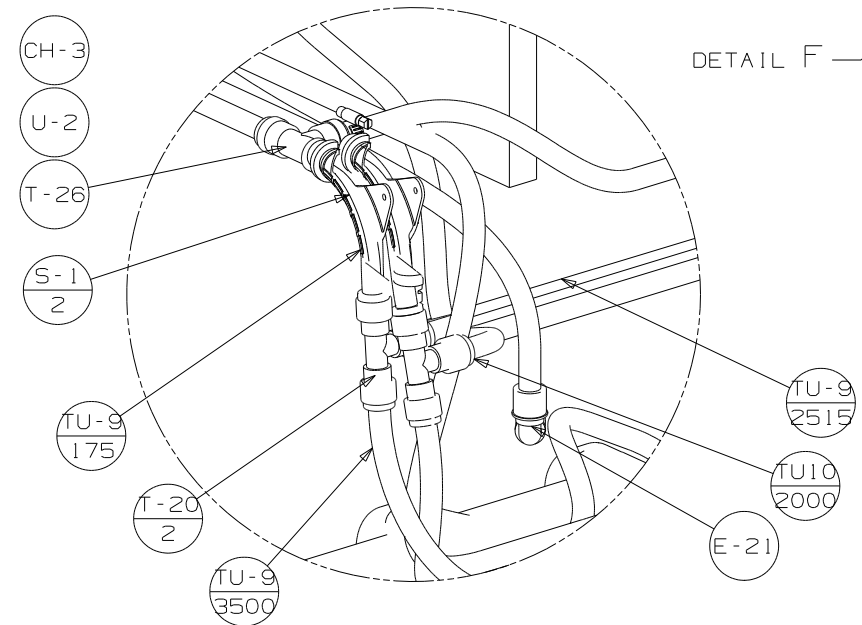
SECTION J-J  
(SHOWN W/OUT ACCESS PANEL)  
611



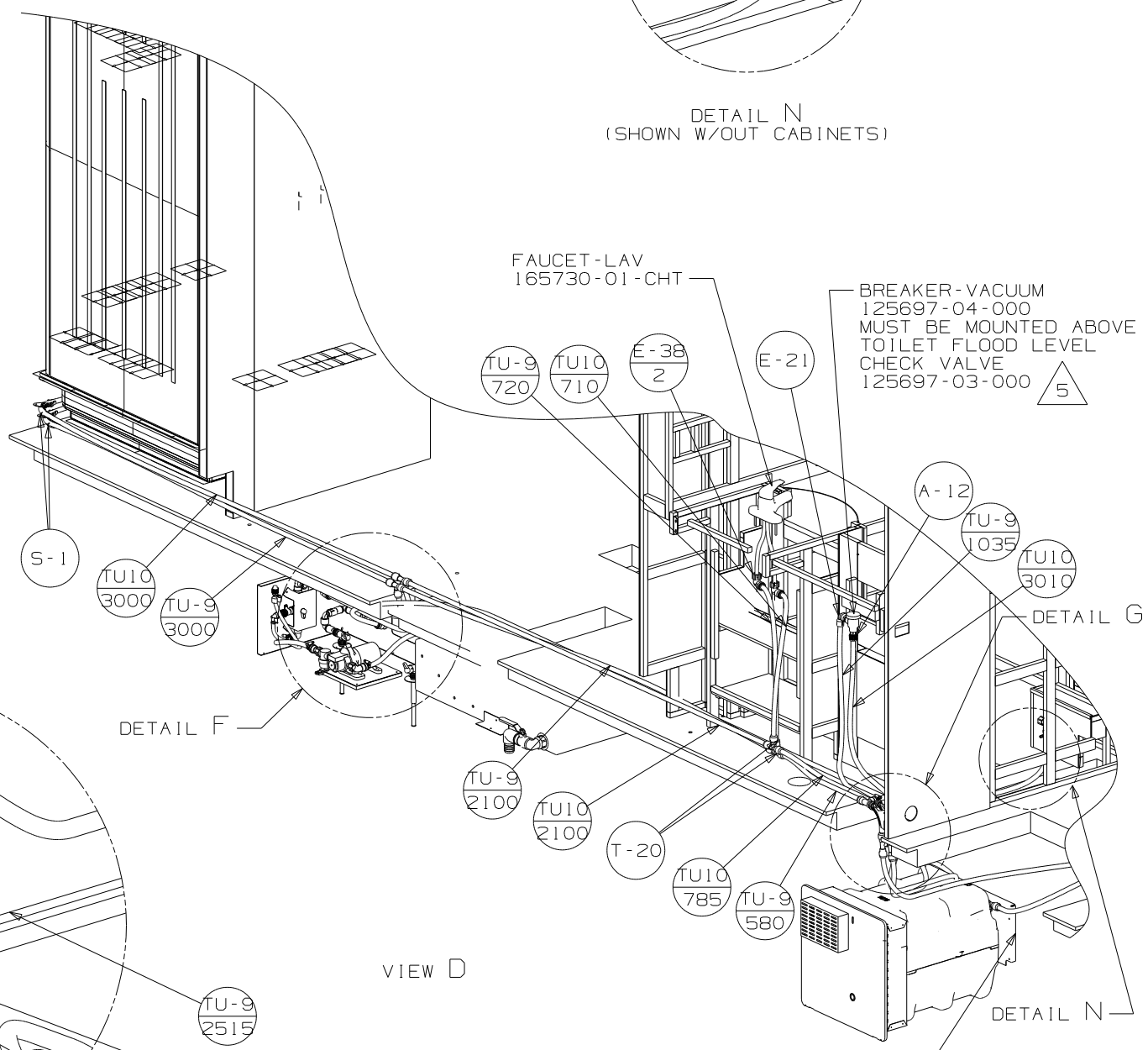
DETAIL N  
(SHOWN W/OUT CABINETS)



DETAIL F  
(SHOWN W/OUT FLOOR & CABINETS)

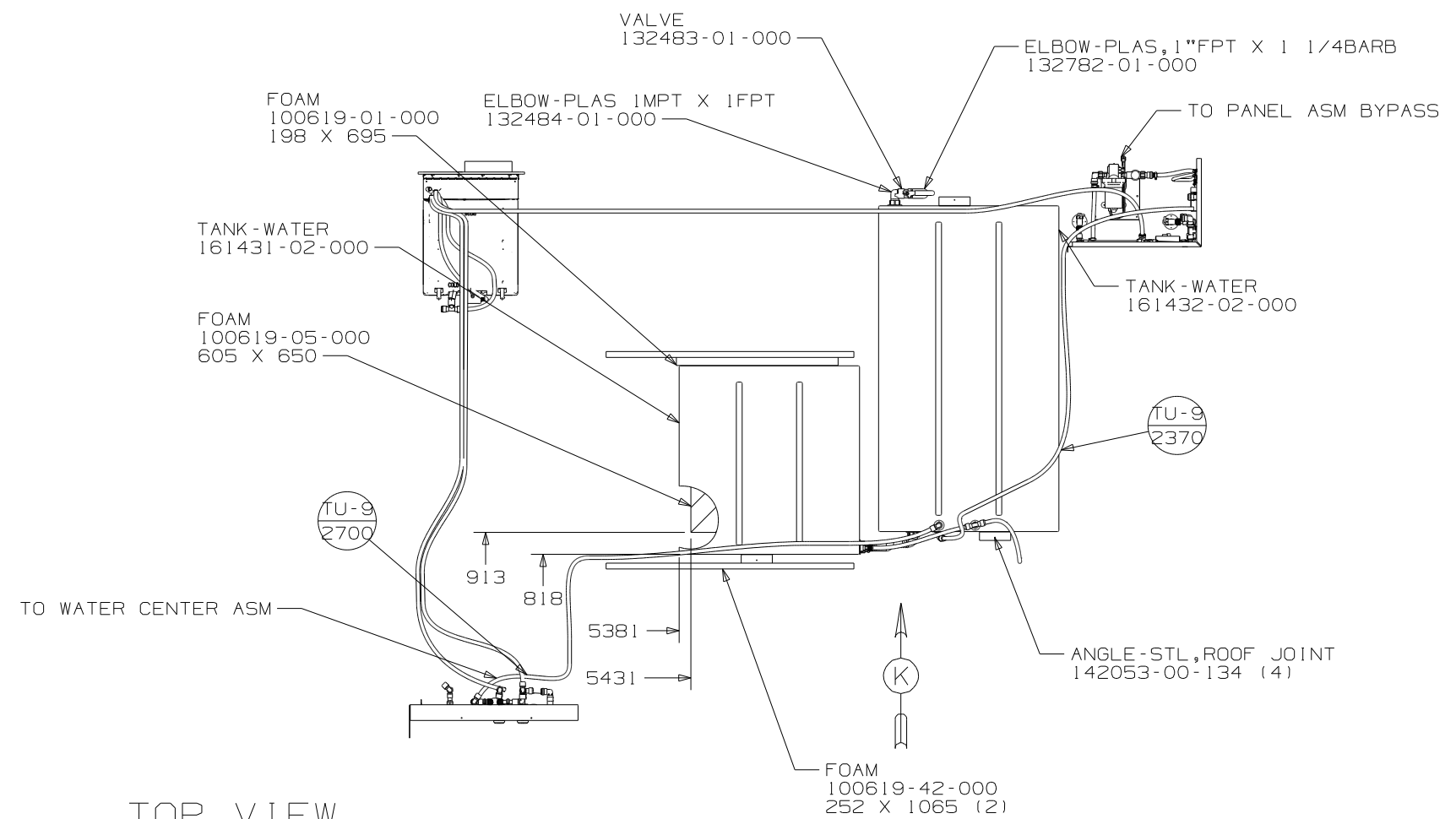


DETAIL G  
(SHOWN W/OUT FLOOR & CABINETS)

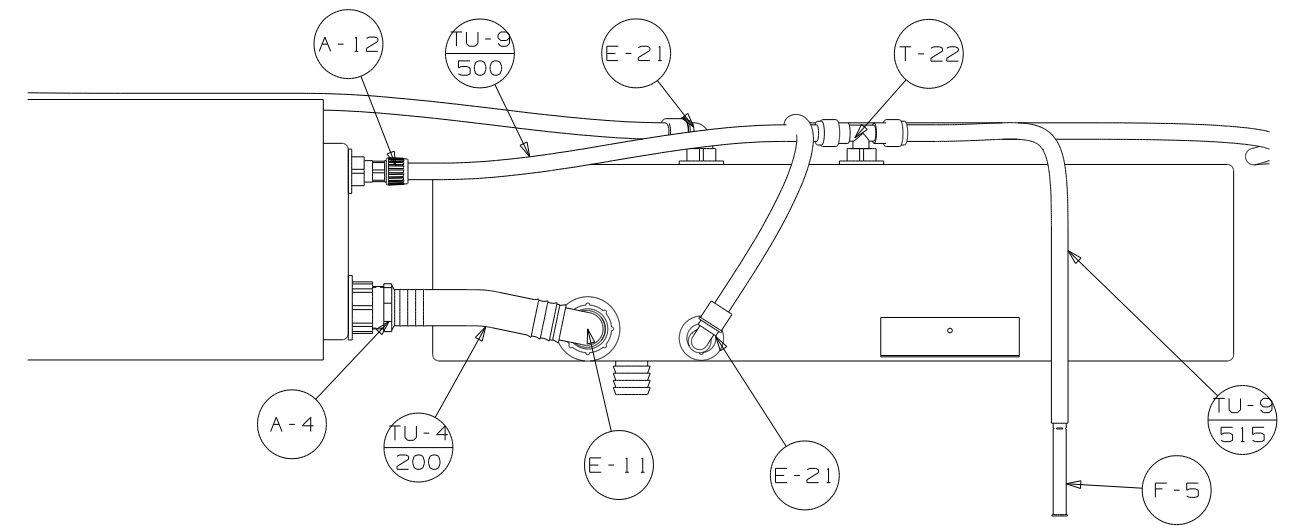


VIEW D

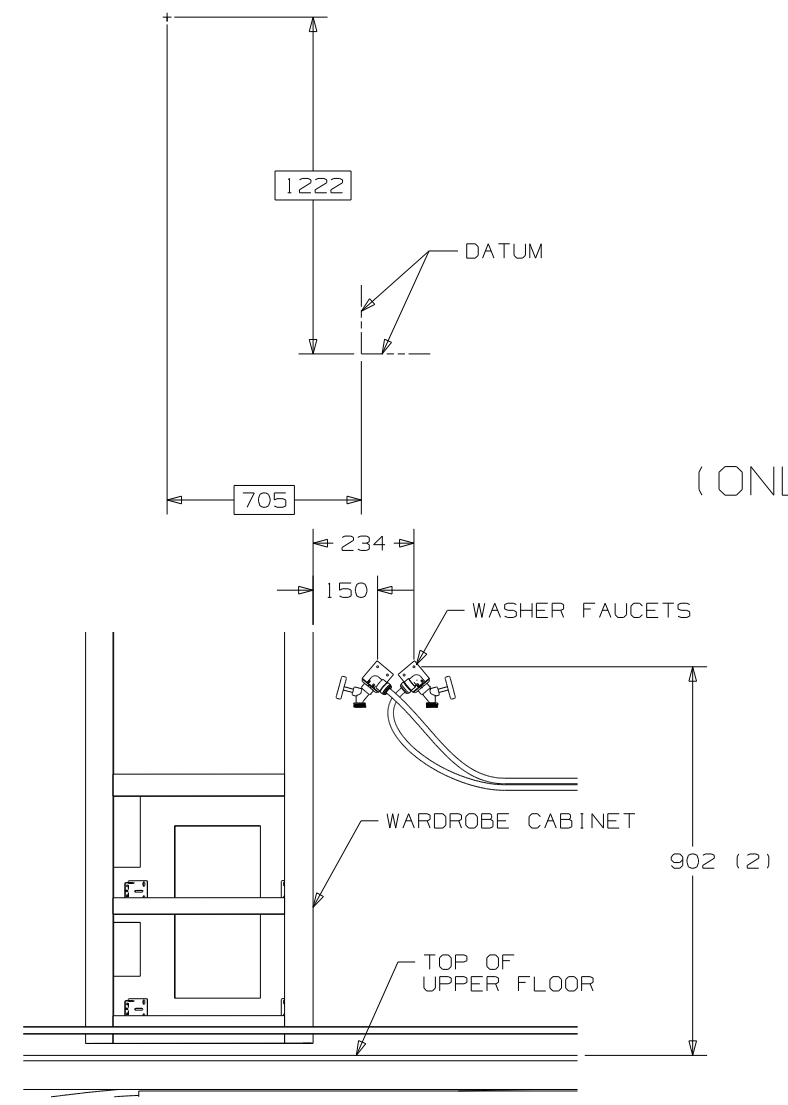
FIRST USED	11 J37F
TITLE	DO NOT SCALE DRAWING
TITLE	WATER SYSTEM INSTL
SHEET 3	PART NO 174013 REV



TOP VIEW  
(ONLY SHOWING TANKS AND PIPING TO TANKS)



VIEW K



VIEW M

FIRST USED	11 J37F	
TITLE:	DO NOT SCALE DRAWING	
TITLE:	WATER SYSTEM INSTL	
SHEET 4	PART NO	REV
	174013	
1 9/1/2010		