

(B1) CODES/STANDARDS-USA
 (265) CODES/STDA-CSA/CMVSS



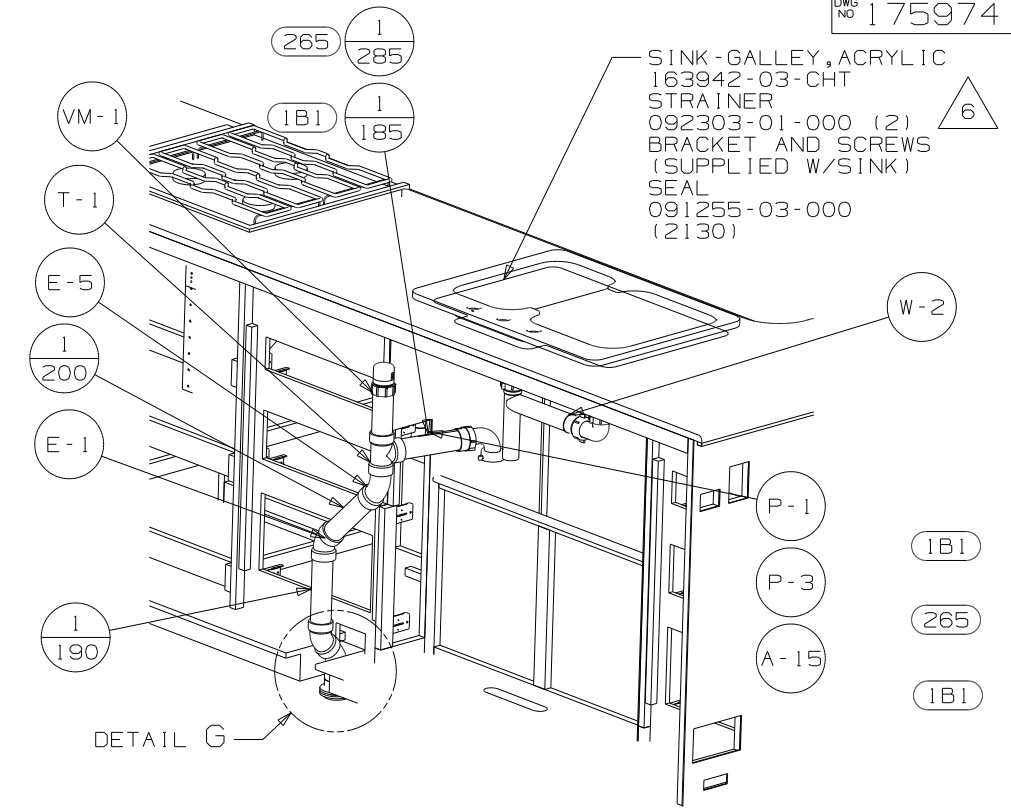
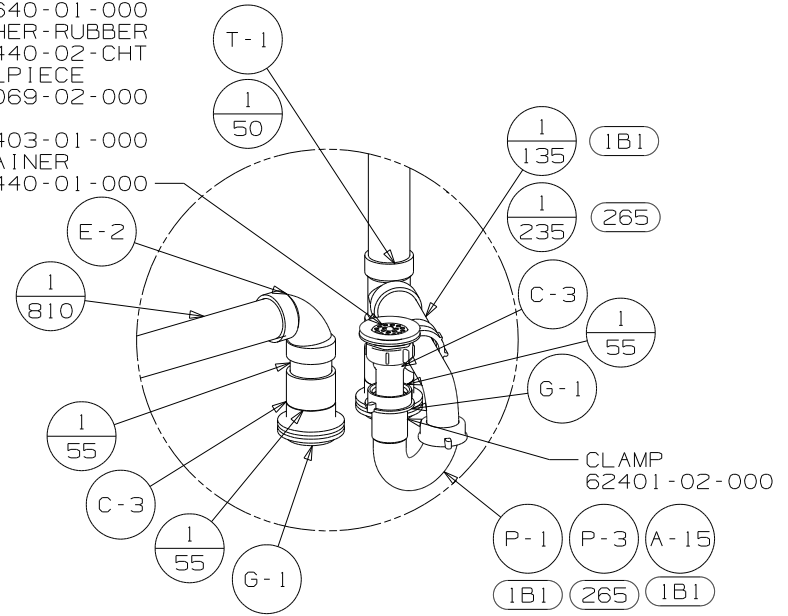
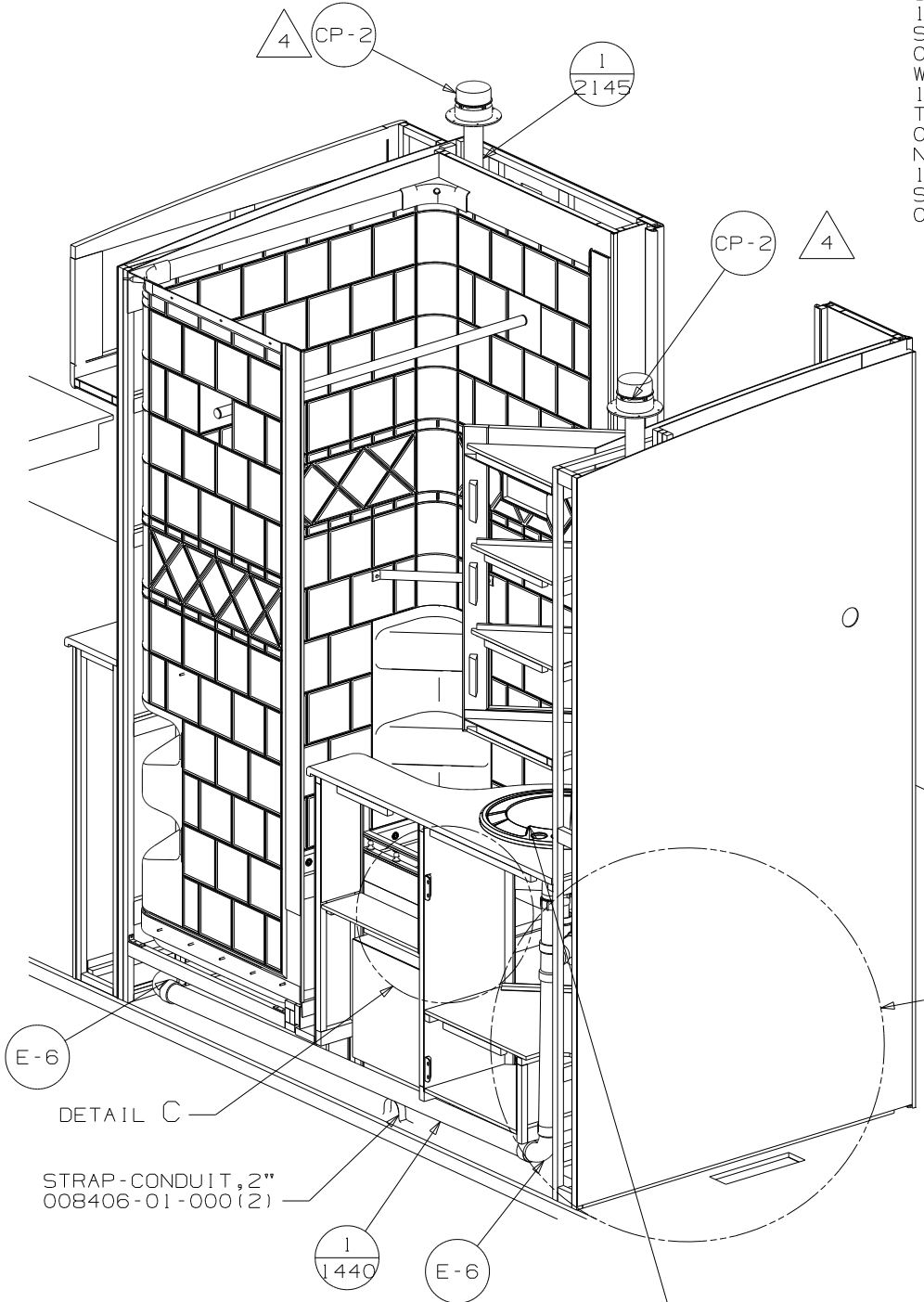
DTR	ORIG. DATE
CHKR	ALL DIMENSIONS ARE IN MILLIMETERS
P.E.	
M.E.	FIRST USED
DSNR	11 E36D
UNSPECIFIED TOLERANCES ARE:	MATERIAL:
HOLE DIM (X) :	3
ONE-PLACE (X.X) :	
TWO-PLACE (X.XX) :	
ANGLE :	
THIRD ANGLE PROJECTION	
DO NOT SCALE DRAWING	REFER TO ES0018 FOR FASTENER TIGHTENING GUIDELINES
TITLE:	DRAINAGE SYSTEM INSTL
SHEET 1 OF 3	PART NO 175974 REV

FOR DRAINAGE CALLOUTS SEE DWG NO 116229-01-000

- NOTES:
1. SLOPE OF HORIZONTAL PIPING TO BE MIN 6 PER 305 mm.
 2. SLOPE OF TRAP ARM MUST BE 6 PER 305 mm.
 3. ALL PIPE AND FITTINGS TO BE ASSEMBLED WITH SOLVENT 4020-01-000 (US) 4020-02-000 (CAN).
 4. VENT PIPE MUST PROJECT 51 MIN AND 64 MAX ABOVE ROOF FOR PROPER FIT AND FUNCTION.
 5. SEAL AROUND SHOWER WITH SILICONE.
 6. USE SMOOTH PLUMBERS PUTTY 167459-01-000 TO SEAL STRAINER(.2 PER STRAINER)

SHOWER ENCLOSURE ASM
164684-03-000
SEALER
069640-01-000
WASHER-RUBBER
127440-02-CHT
TAILPIECE
011069-02-000
NUT
130403-01-000
STRAINER
066440-01-000

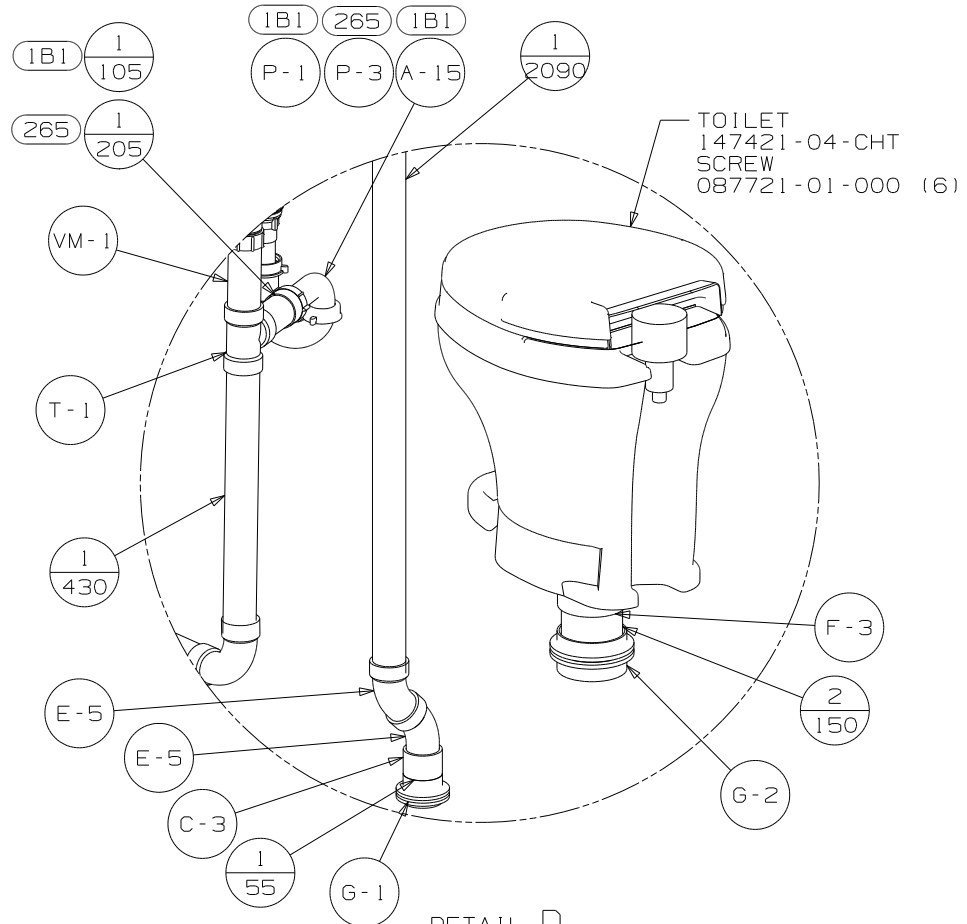
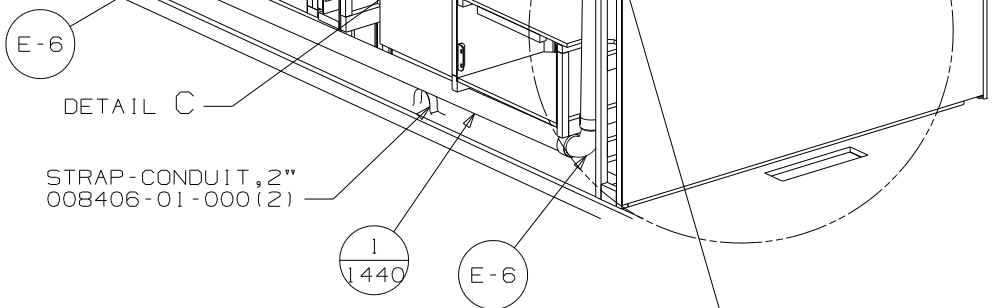
SINK-GALLEY, ACRYLIC
163942-03-CHT
STRAINER
092303-01-000 (2)
BRACKET AND SCREWS
(SUPPLIED W/SINK)
SEAL
091255-03-000
(2130)



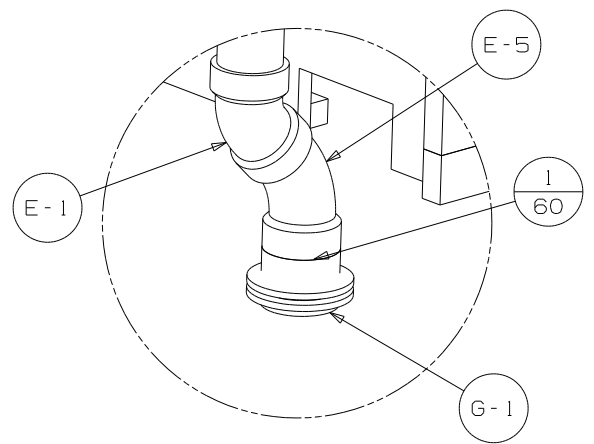
DETAIL C
(SHOWN W/OUT FLOOR, SHOWER, AND CABINET)

DETAIL G

VIEW B



DETAIL D
(SHOWN W/OUT FLOOR AND CABINET)

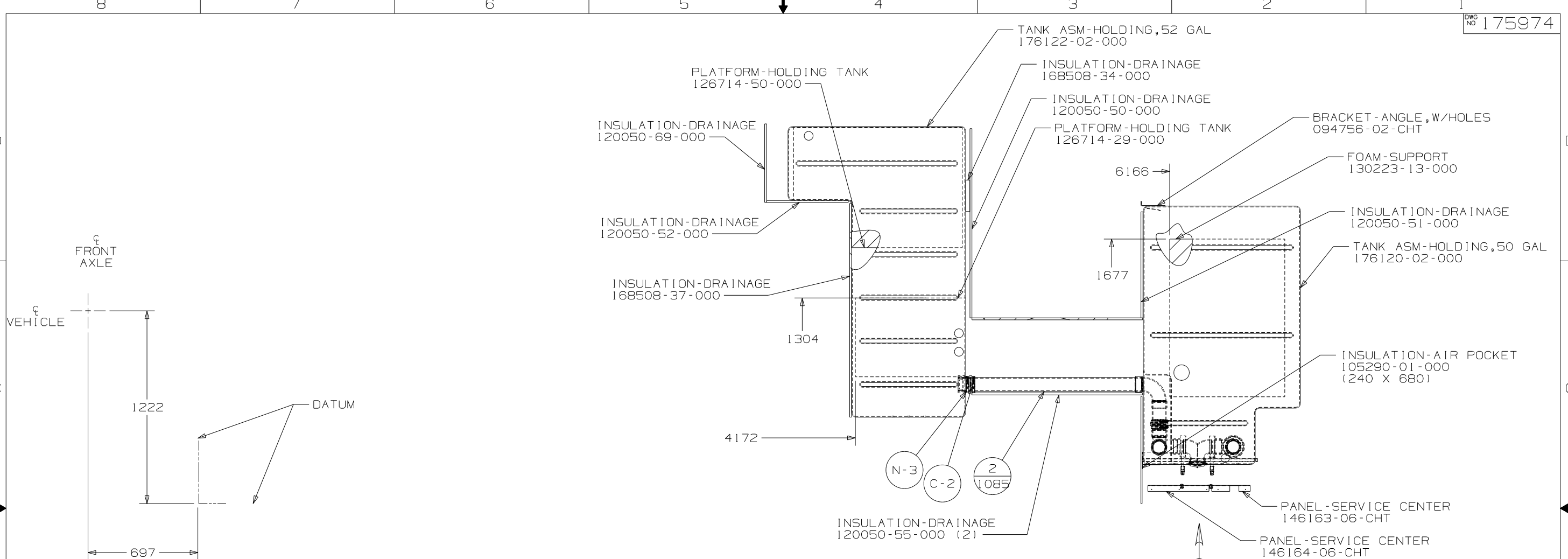


DETAIL G

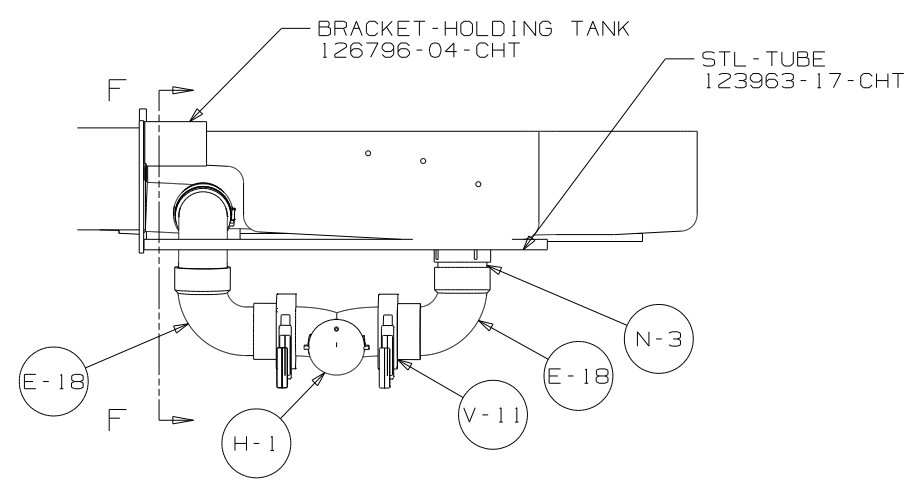
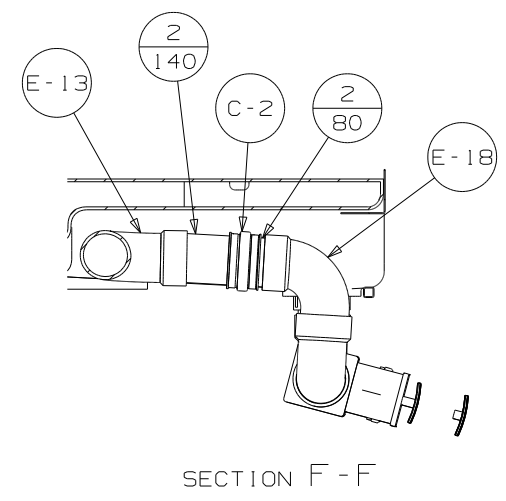
SINK-LAV
164615-01-CHT
TAILPIECE
106116-01-CHT
GASKET
106116-02-CHT
SCREW
G67-08-10U (4)

STRAP-CONDUIT, 2"
008406-01-000 (2)

FIRST USED	11 E36D
TITLE	DO NOT SCALE DRAWING
TITLE	DRAINAGE SYSTEM INSTL
SHEET 2	PART NO 175974 REV

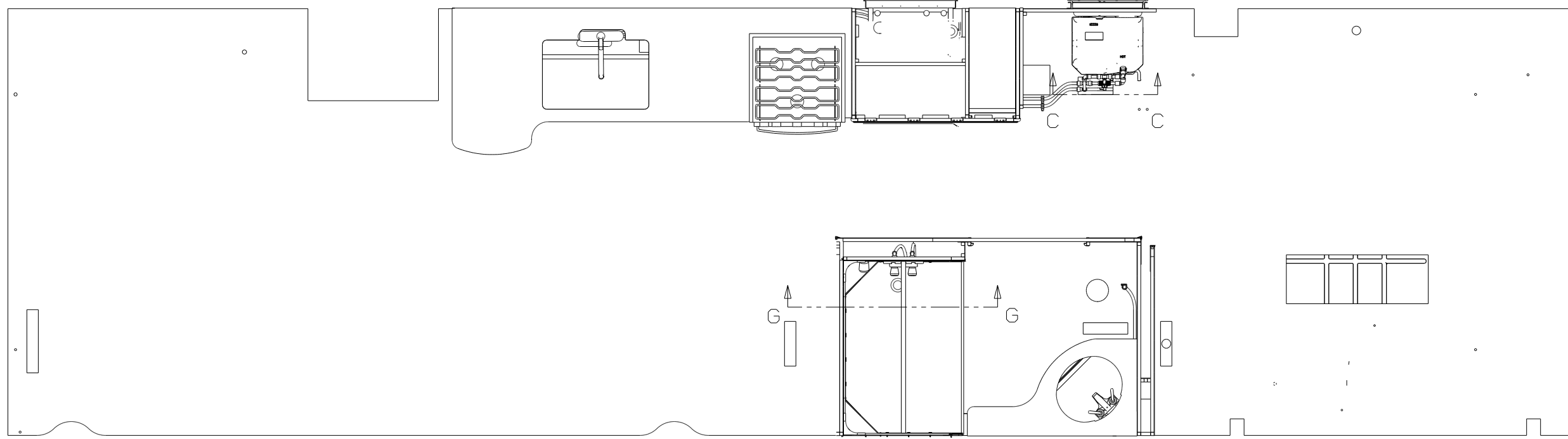


SHOWING TANKS AND DRAINS UNDER FLOOR



VIEW E (SHOWN W/OUT PANEL ASM)

FIRST USED	11 E36D	
TITLE	DO NOT SCALE DRAWING	
	DRAINAGE SYSTEM INSTL	
SHEET 3	PART NO	175974
	REV	



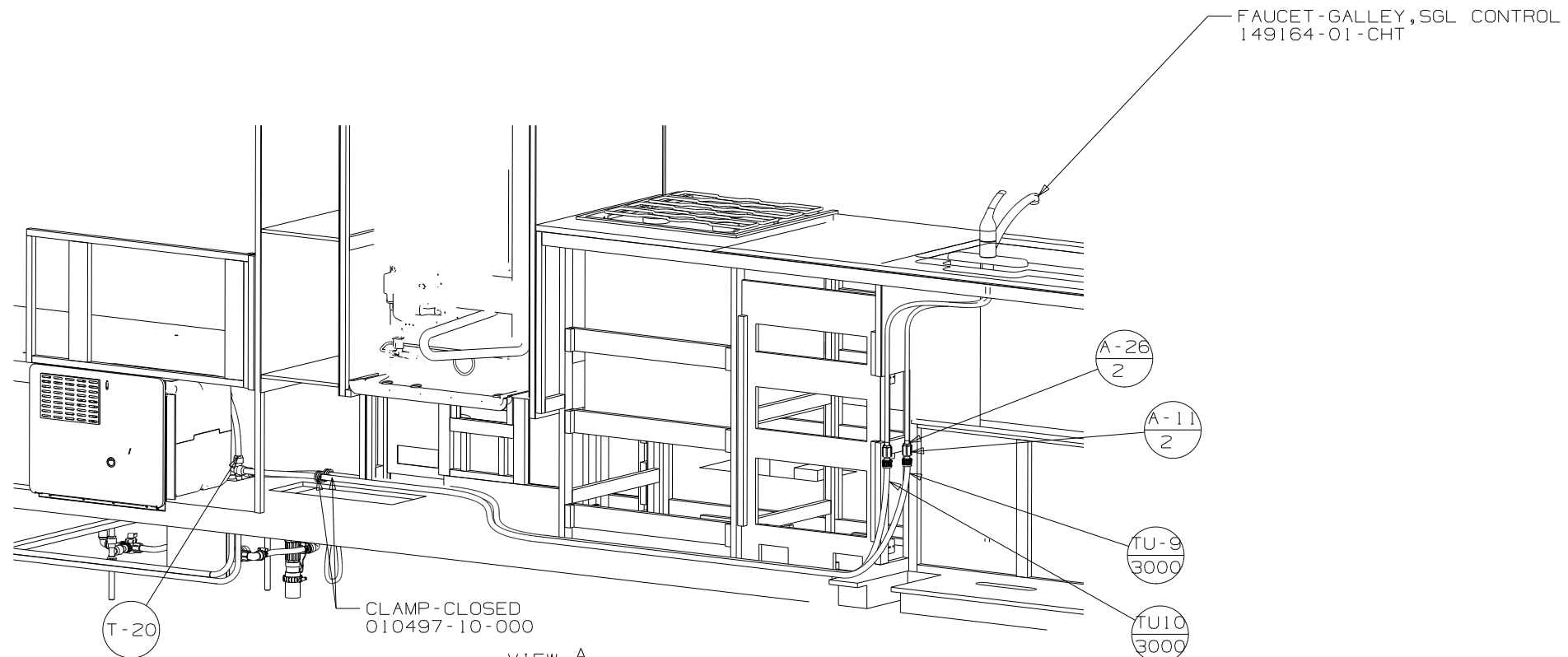
- 11 CHECK VALVE IS INSTALLED TO PREVENT WATER FROM LEAVING WATER HEATER.
 - 10 CHECK VALVE IS INSTALLED TO PREVENT WATER FROM ENTERING WATER HEATER.
 - 9 ADD PIPE WRAP (LADDER SCRAP) INSULATION HERE.
 - 8 LABEL HOT AND COLD SUPPLY TUBES.
 - 7 TAPE FITTING TO TUBE BEFORE CABINET SET TO PREVENT FITTING FROM MOVING.
 - 6 ADD TEFLON TAPE 010405-01-000.
 - 5 ADD TEFLON TAPE 010405-02-000.
 - 4 FLUSHING SYSTEM REQUIRES 125697-06-000 INSTRUCTION SHEET.
3. ALL TUBING TO BE SECURED AT 1200 INTERVALS MAXIMUM WITH CLAMP 010495-01-000 AND SCREW 000G67-10-12B OR EQUIVALENT.
 2. TUBING TO BE INSTALLED WITH SUFFICIENT SLOPE TO PROVIDE DRAINAGE TO NEAREST VALVE.
 1. PLASTIC FITTINGS TO BE SEALED WITH SEALANT 084456-01-000.

- 1J4 EXT WASH STATION - WITHOUT
- 64R EXTERIOR WASH STATION
- 53F WATER HEATER-ELEC. IGNITION
- 53D WTR HTR-6GAL/ELE/LP/MOTORAID

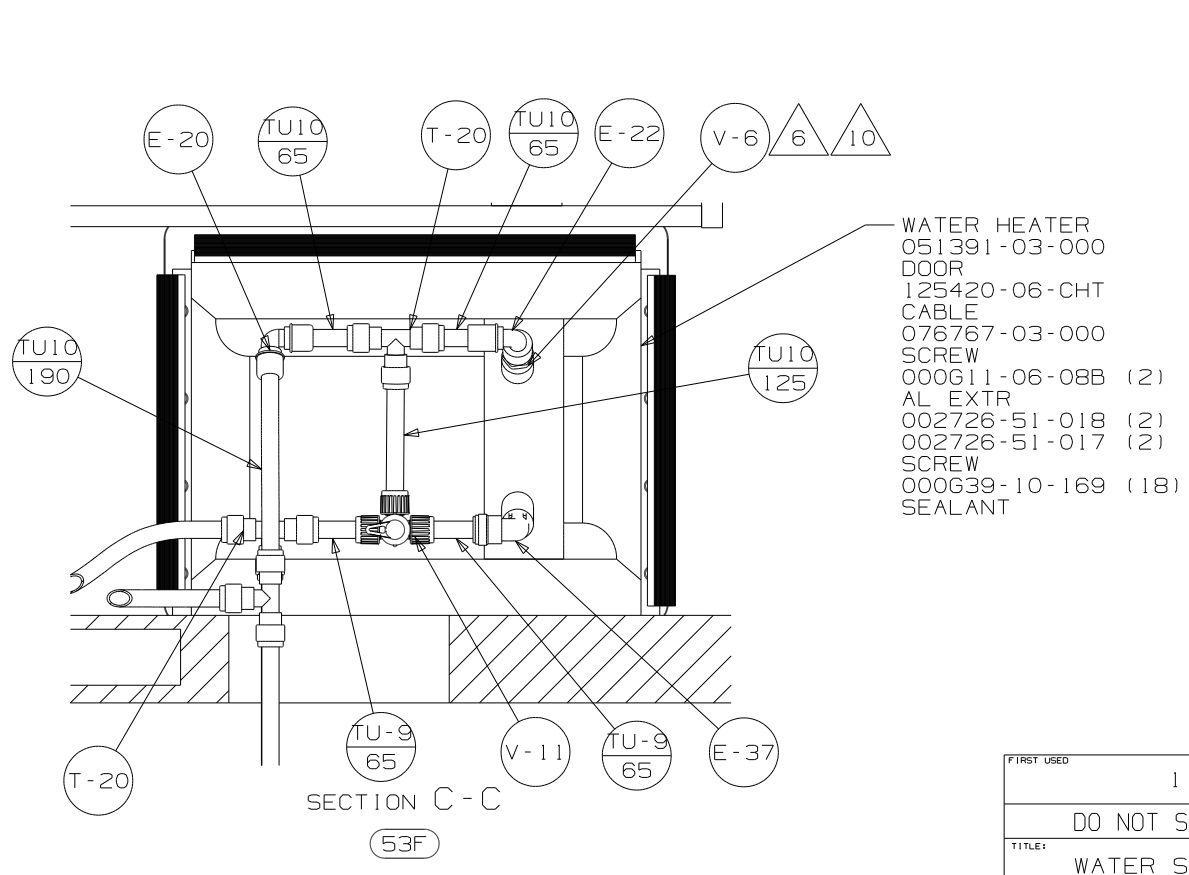
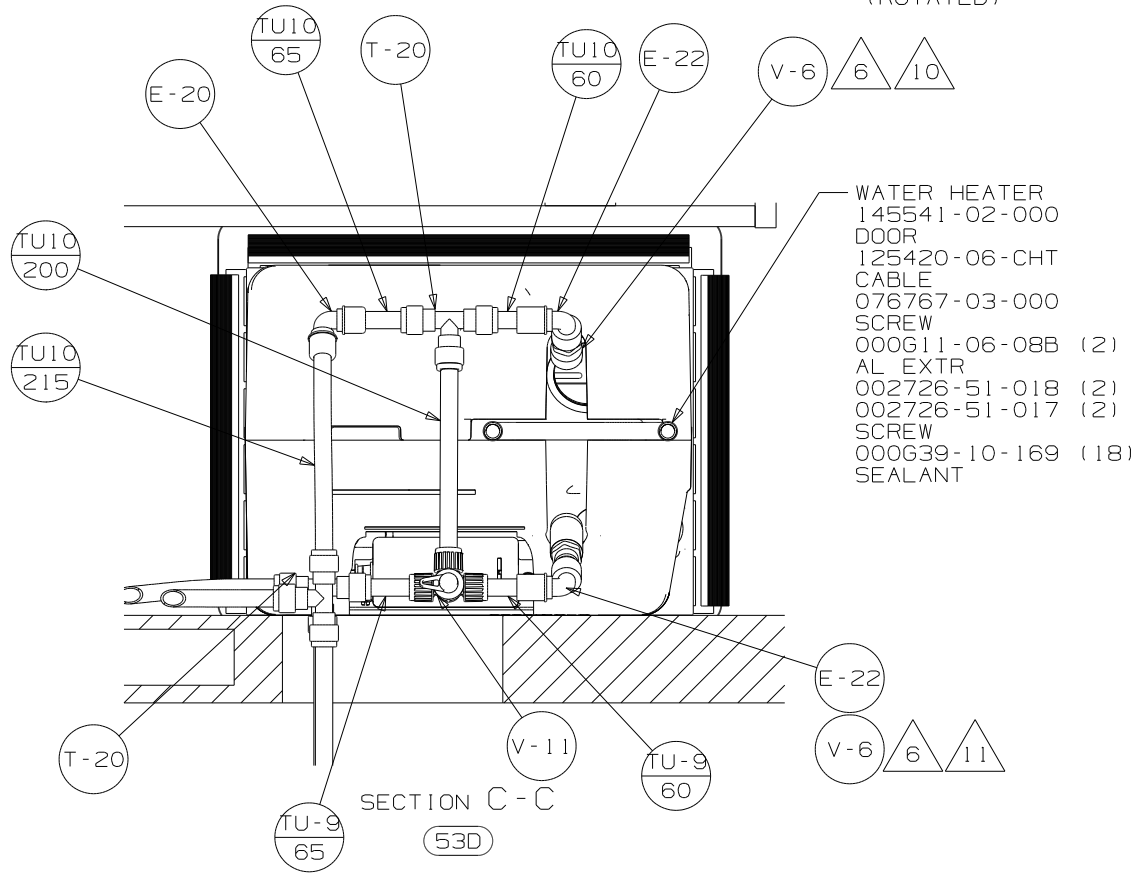
WINNEBAGO		COPYRIGHT 2011 WINNEBAGO INDUSTRIES, INC.	
DFT	ORIG. DATE	ALL DIMENSIONS ARE IN MILLIMETERS	
CHKR		FIRST USED	
P.E.		11 E36D	
M.E.		UNSPECIFIED TOLERANCES ARE:	
DSNR		MATERIAL:	
		WHOLE DIM (X)	: 3
		ONE-PLACE (X.X)	: 1.5
		TWO-PLACE (X.XX)	: 0.50
		ANGLE	: 1°
THIRD ANGLE PROJECTION		DO NOT SCALE DRAWING REFER TO ES0018 FOR FASTENER TIGHTENING GUIDELINES	
TITLE: WATER SYSTEM INSTL			
SHEET 1 OF 5	PART NO	175973	REV

FOR
WATER
CALLOUTS
SEE DWG NO
116230-01-000

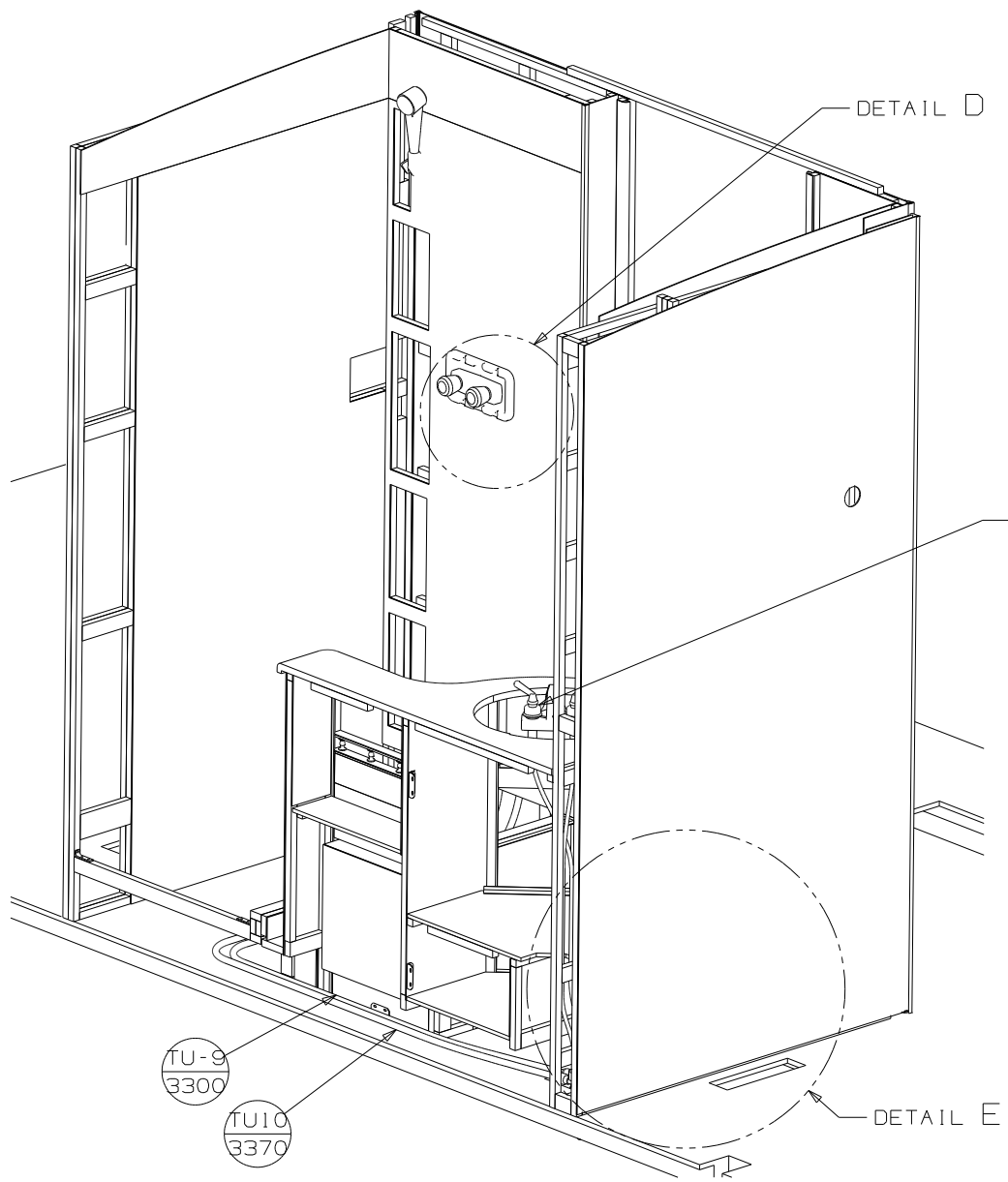
NOTES:



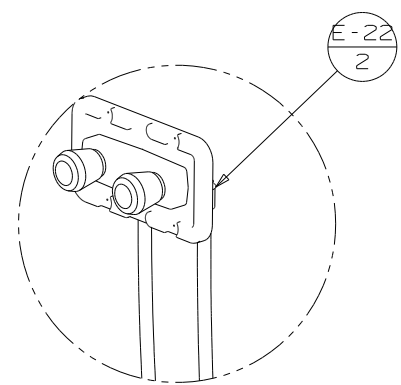
VIEW A (ROTATED)



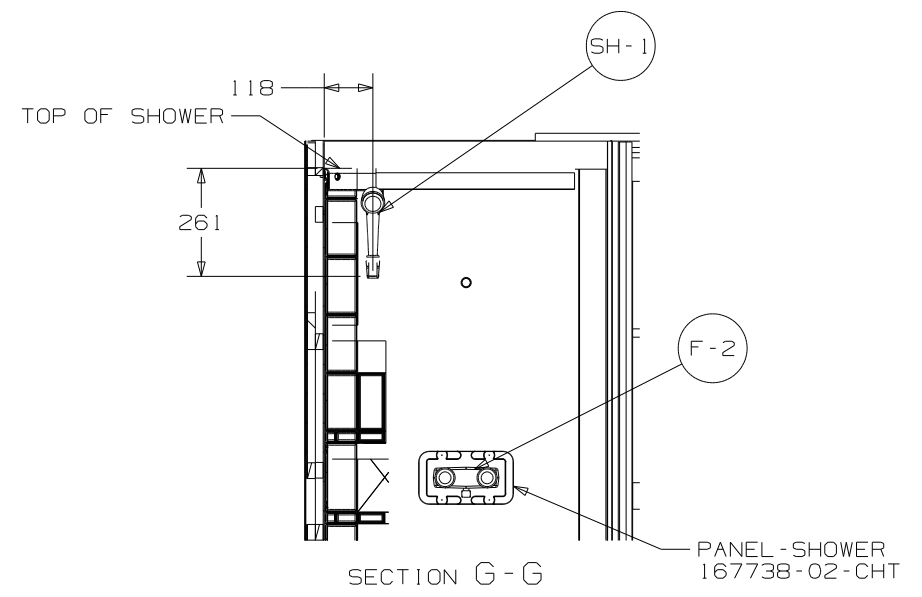
FIRST USED	11 E36D
TITLE	DO NOT SCALE DRAWING
SHEET 2	WATER SYSTEM INSTL
PART NO	175973
REV	1 2/22/2011



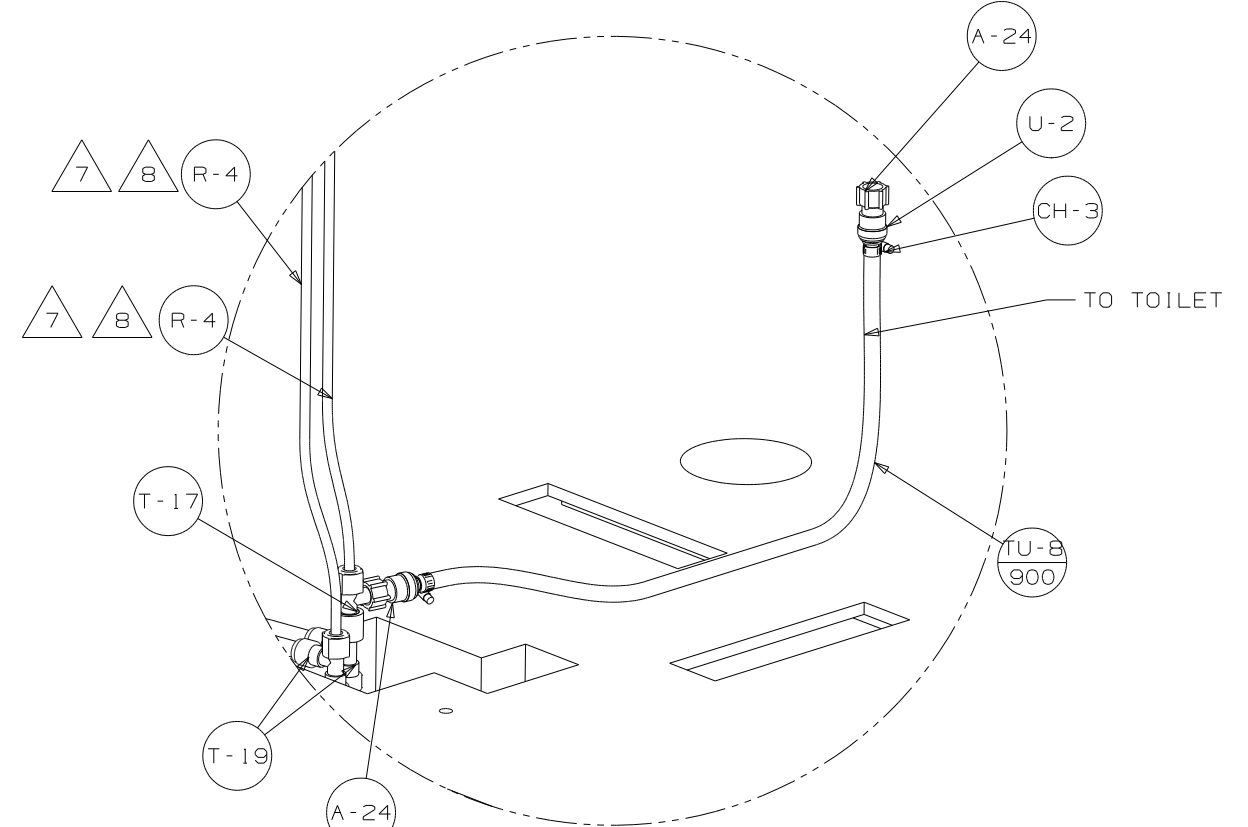
VIEW B



DETAIL D
(SHOWN W/OUT CABINETS)

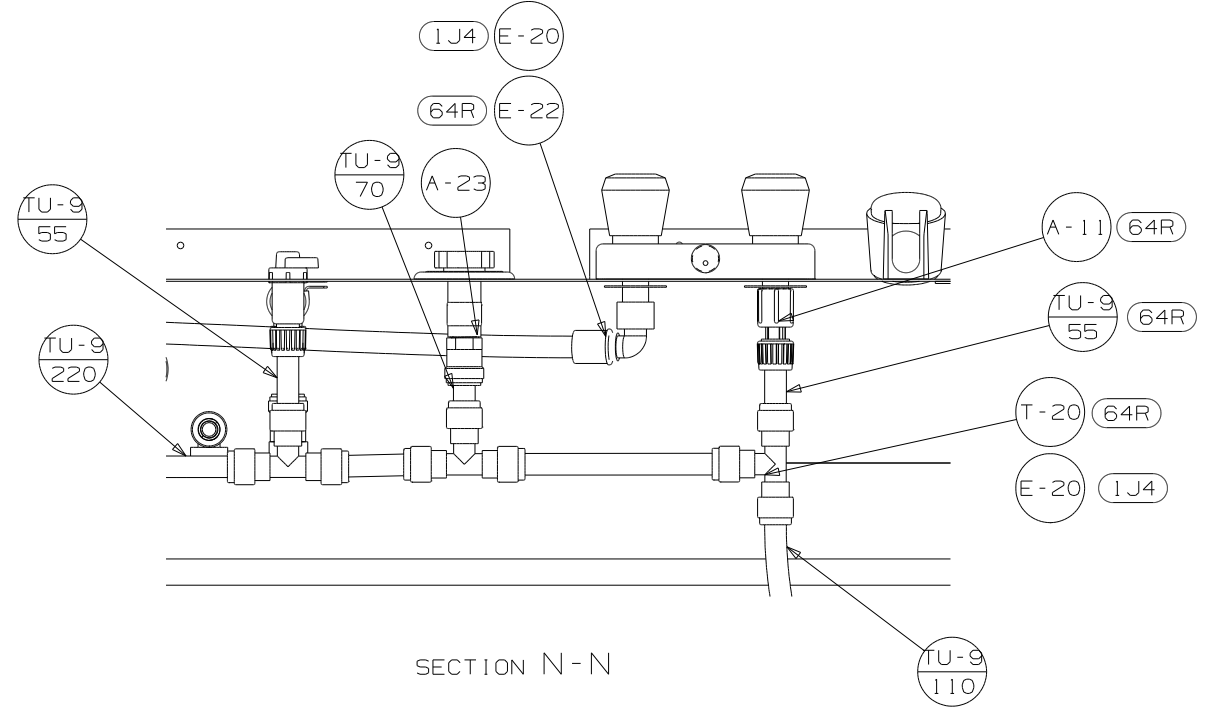
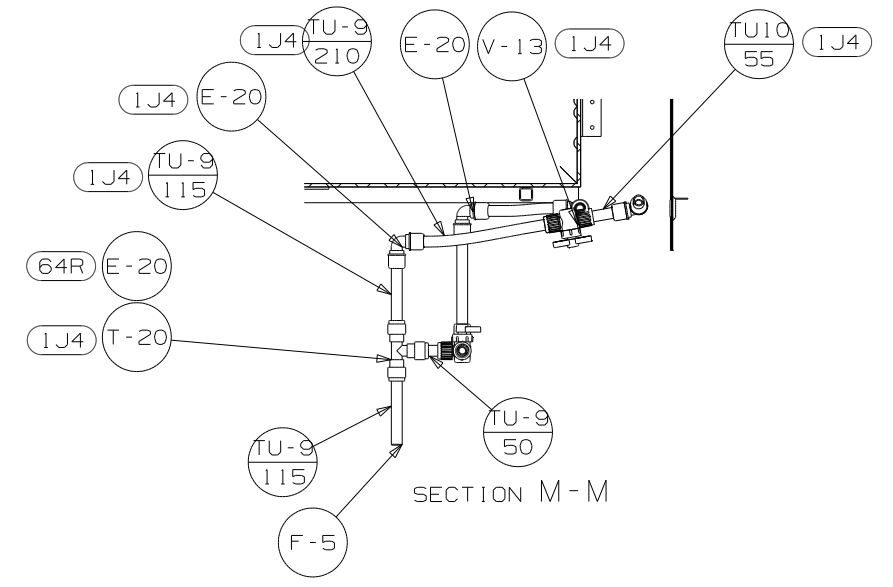
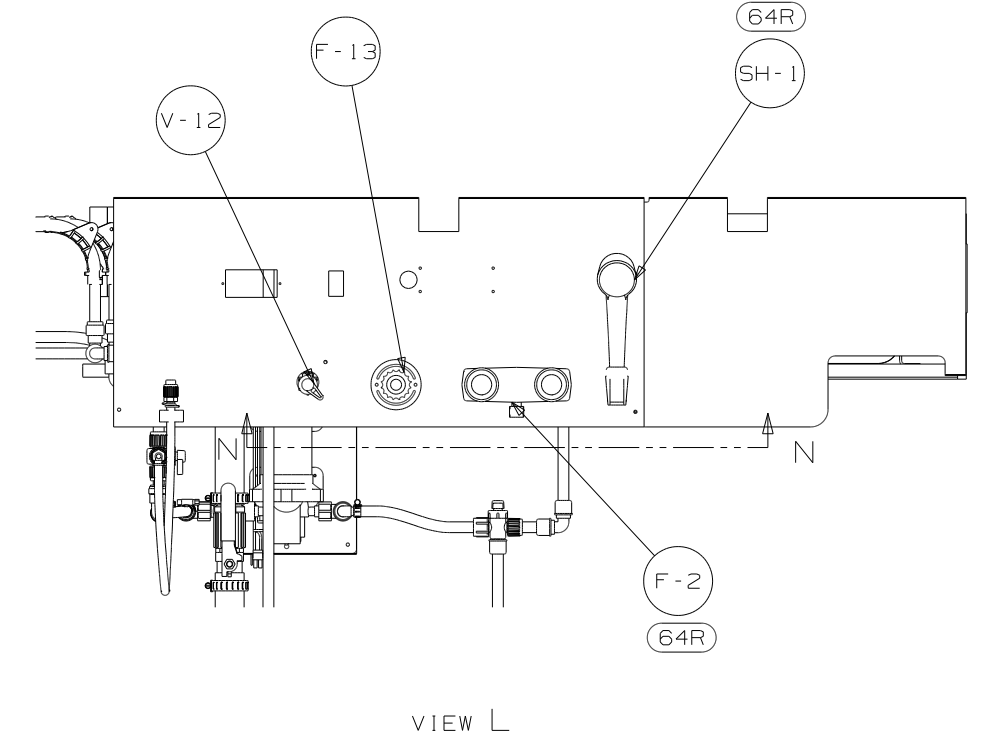
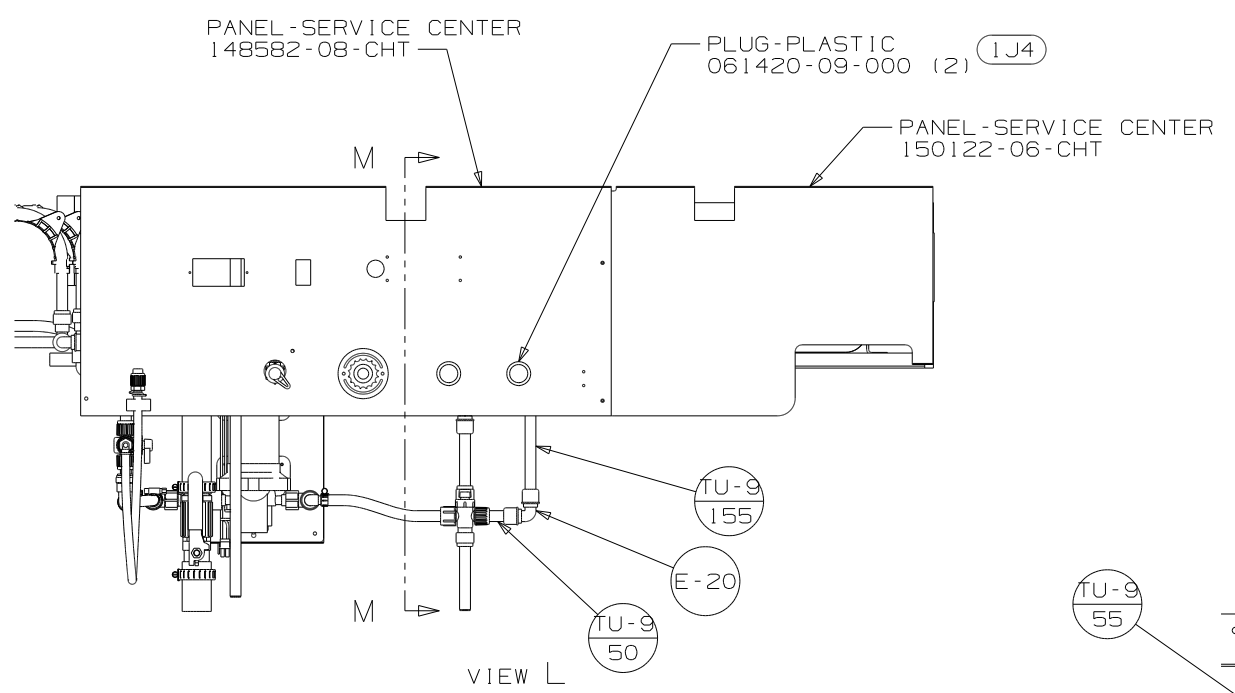


SECTION G-G



DETAIL E
(SHOWN W/OUT CABINETS)

FIRST USED		11 E36D	
DO NOT SCALE DRAWING			
TITLE: WATER SYSTEM INSTL			
SHEET 3	PART NO	175973	REV



FIRST USED	11 E36D		
TITLE:	DO NOT SCALE DRAWING		
TITLE:	WATER SYSTEM INSTL		
SHEET 5	PART NO	175973	REV