

FRONT OF COACH

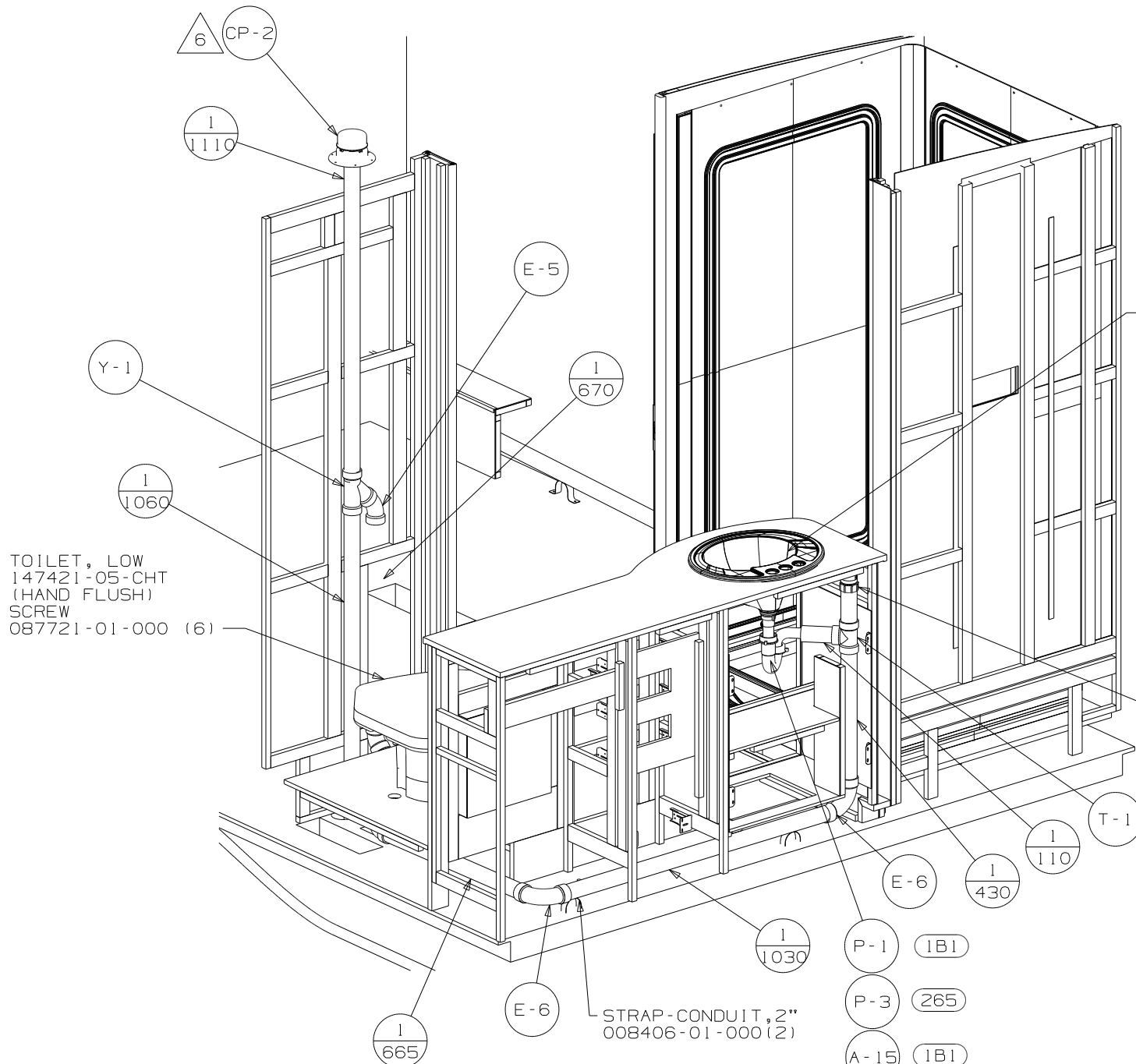
DETAIL C

- NOTES:
- 7. USE TEFLON TAPE 010405-01-000 FOR PUMP TO A-12 CONNECTION.
 - 6. VENT PIPE MUST PROJECT 51 MIN AND 64 MAX ABOVE ROOF FOR PROPER FIT AND FUNCTION.
 - 5. SEAL AROUND SHOWER WITH SILICONE.
 - 4. SECURE VENT TUBES TO FLOOR WITH BRACKET 136878-01-CHT, CLAMP 062401-02-000 AND SCREW 000667-10-12B.
 - 3. ALL PIPE AND FITTINGS TO BE ASSEMBLED WITH SOLVENT 004020-01-000 (US), 004020-02-000 (CAN).
 - 2. SLOPE OF TRAP ARM MUST BE 6 PER 305 mm.
 - 1. SLOPE OF HORIZONTAL PIPING TO BE MIN 3 PER 305 mm.

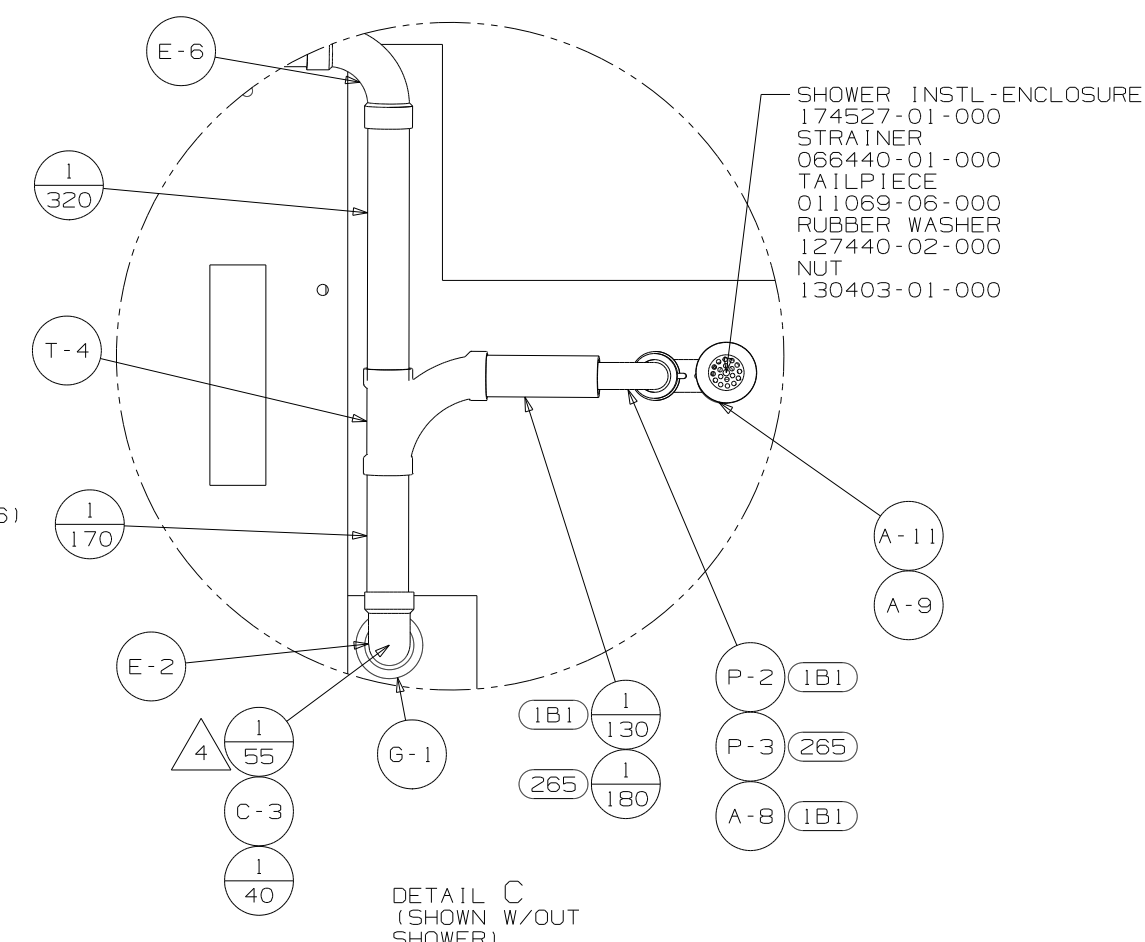
(265) CODES/STDS-CSA/CMVSS
 (1B1) CODES/STANDARDS-USA

WINNEBAGO		COPYRIGHT 2011 WINNEBAGO INDUSTRIES, INC.	
D/FR	ORIG. DATE	ALL DIMENSIONS ARE IN MILLIMETERS	
CHKR		FIRST USED	
P.E.		11 E35F	
M.E.		UNSPECIFIED TOLERANCES ARE:	
DSNR		MATERIAL:	
		WHOLE DIM (X) :	3
		ONE-PLACE (X.X) :	
		TWO-PLACE (X.XX) :	
		ANGLE :	
		THIRD ANGLE PROJECTION	
DO NOT SCALE DRAWING		REFER TO ES0018 FOR FASTENER TIGHTENING GUIDELINES	
TITLE: DRAINAGE SYSTEM INSTL			
SHEET 1 OF 4	PART NO	REV	
	175317		
REF:	1 1/27/2011		

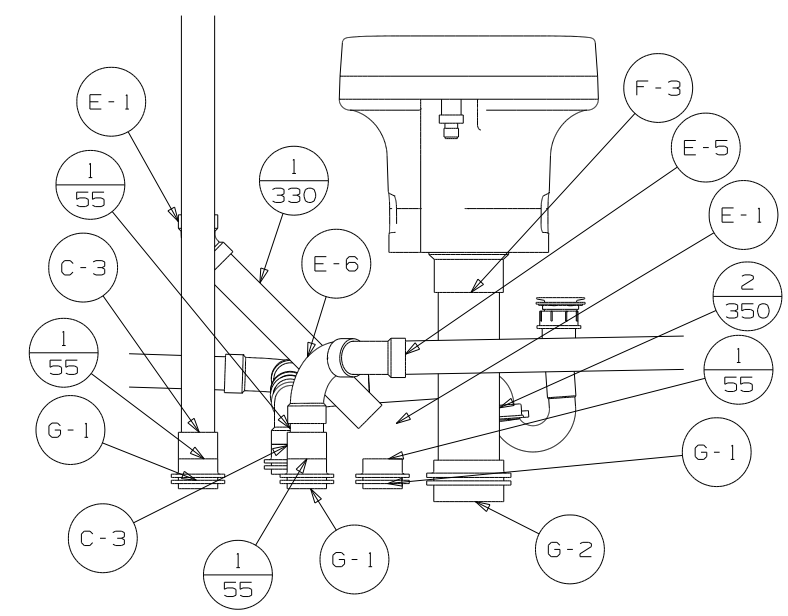
(X-X)
 FOR
 DRAINAGE
 CALLOUTS
 SEE DWG NO
 116229-01-000



VIEW A



DETAIL C
(SHOWN W/OUT SHOWER)



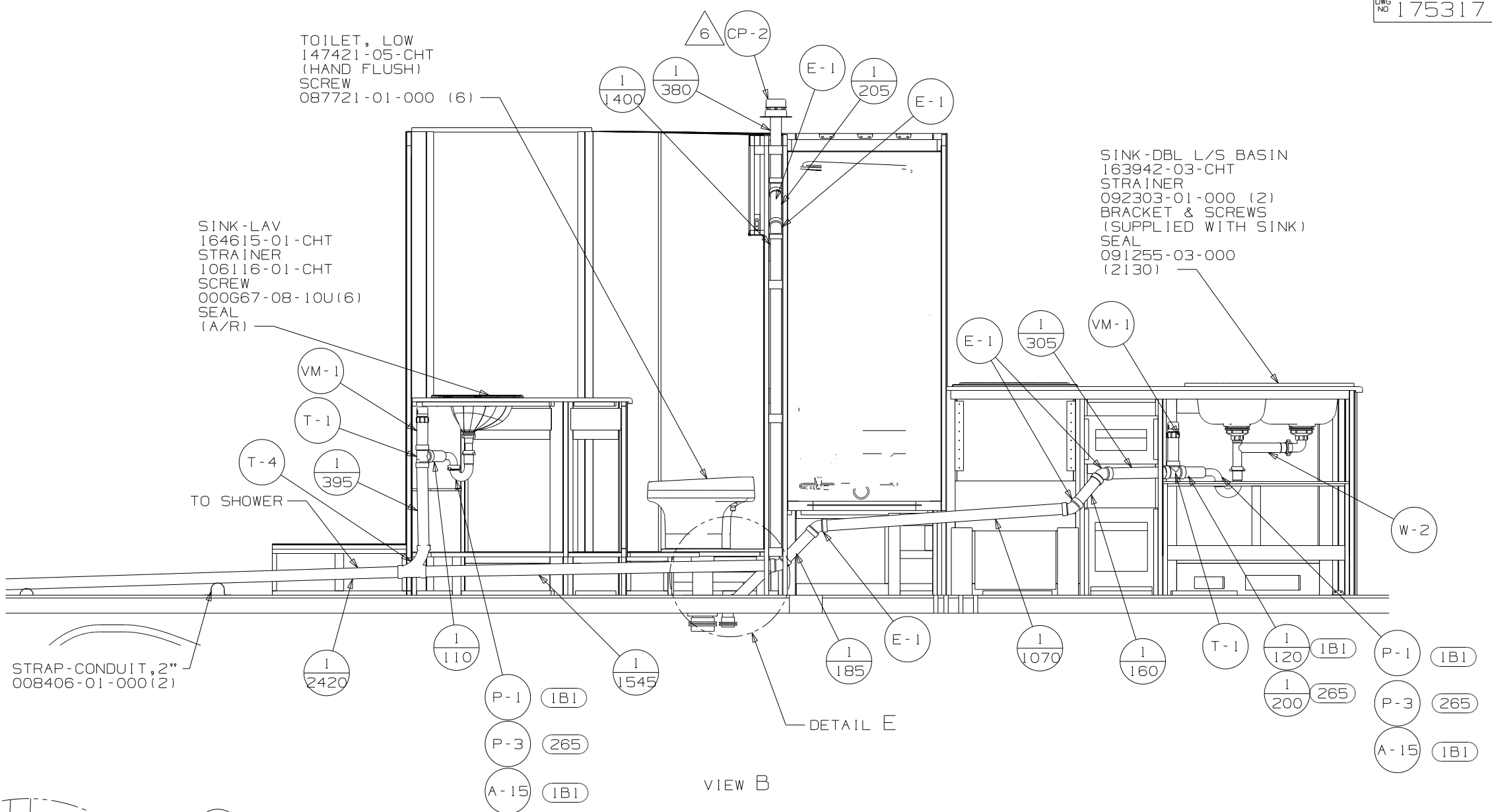
VIEW D
(SHOWN W/OUT CABINETS AND FLOOR)

FIRST USED	11 E35F
DO NOT SCALE DRAWING	
TITLE:	DRAINAGE SYSTEM INSTL
SHEET 2	PART NO 175317 REV

TOILET, LOW
 147421-05-CHT
 (HAND FLUSH)
 SCREW
 087721-01-000 (6)

SINK-LAV
 164615-01-CHT
 STRAINER
 106116-01-CHT
 SCREW
 000667-08-10U(6)
 SEAL
 (A/R)

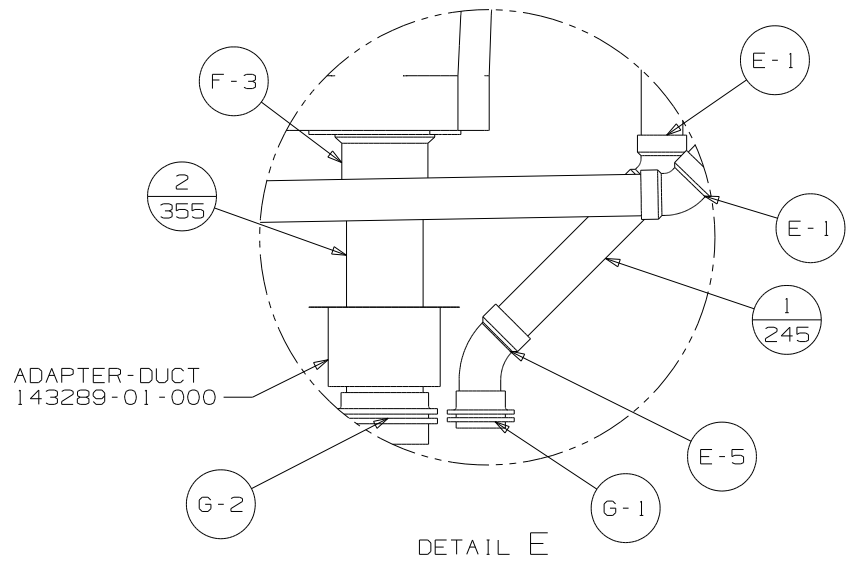
SINK-DBL L/S BASIN
 163942-03-CHT
 STRAINER
 092303-01-000 (2)
 BRACKET & SCREWS
 (SUPPLIED WITH SINK)
 SEAL
 091255-03-000
 (2130)



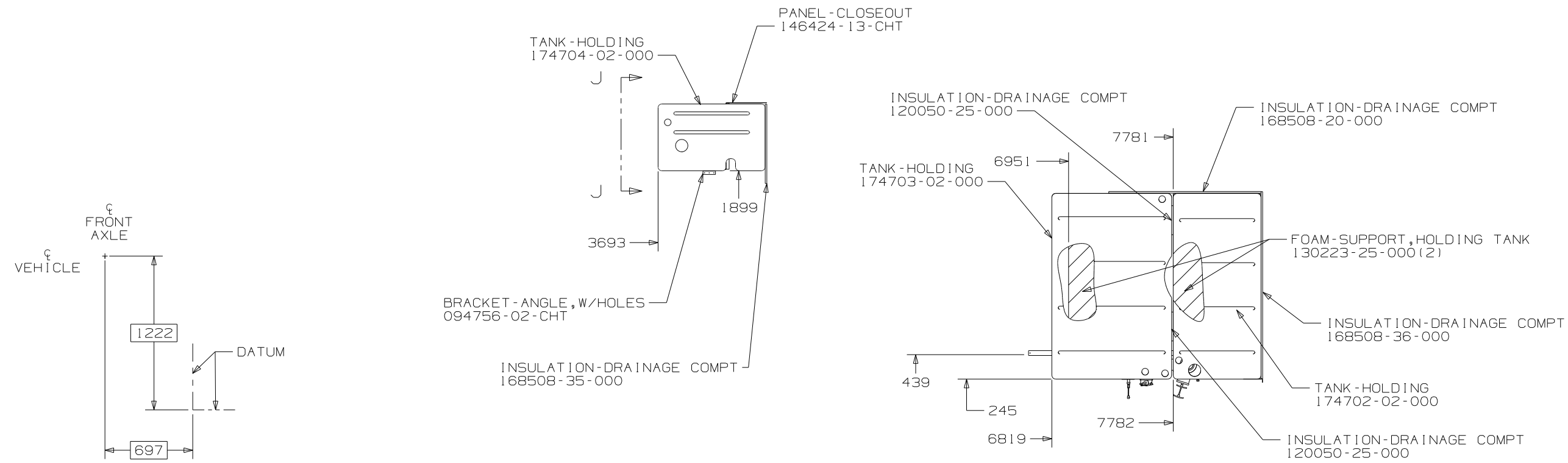
STRAP-CONDUIT, 2"
 008406-01-000 (2)

DETAIL E

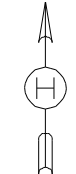
VIEW B



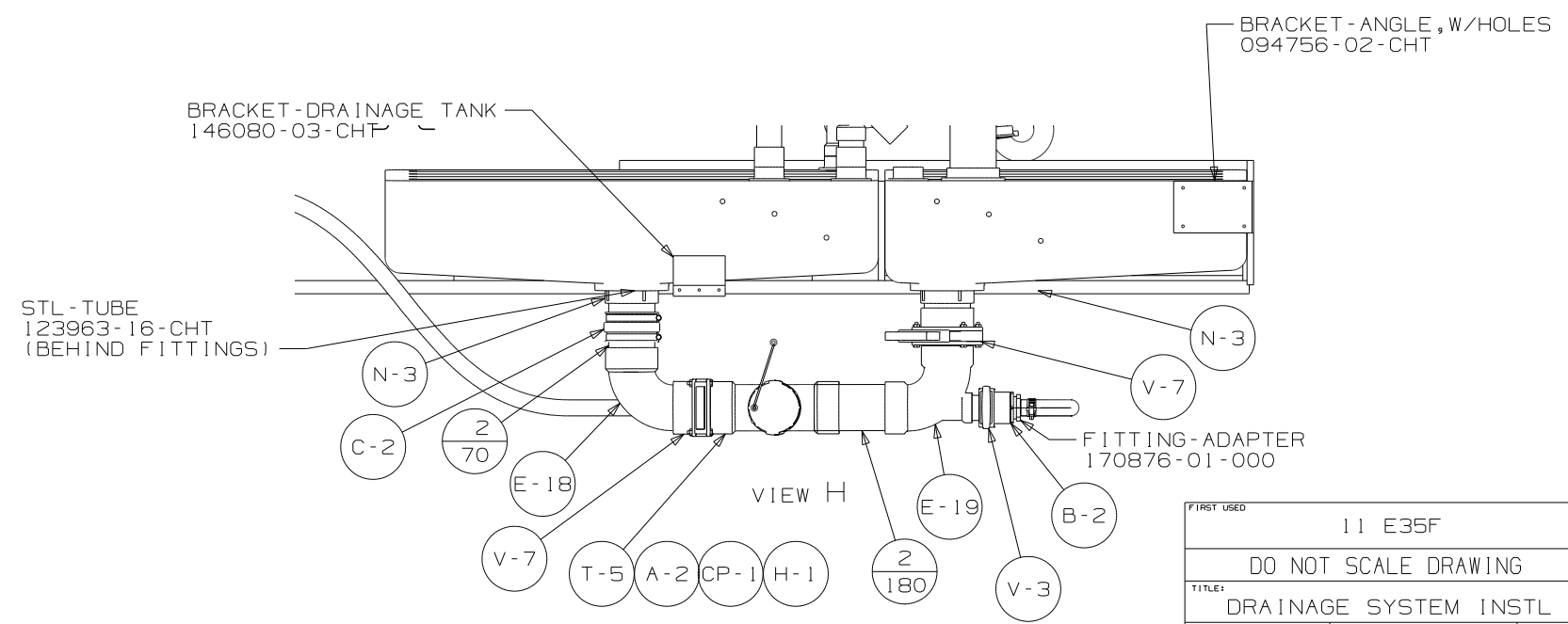
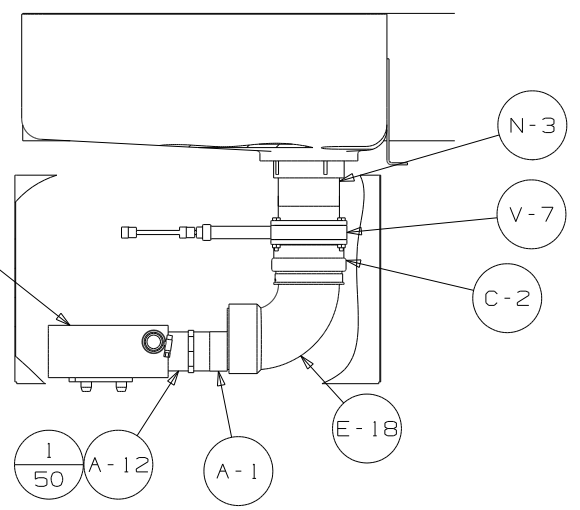
FIRST USED	11 E35F		
TITLE	DO NOT SCALE DRAWING		
	DRAINAGE SYSTEM INSTL		
SHEET 3	PART NO	175317	REV



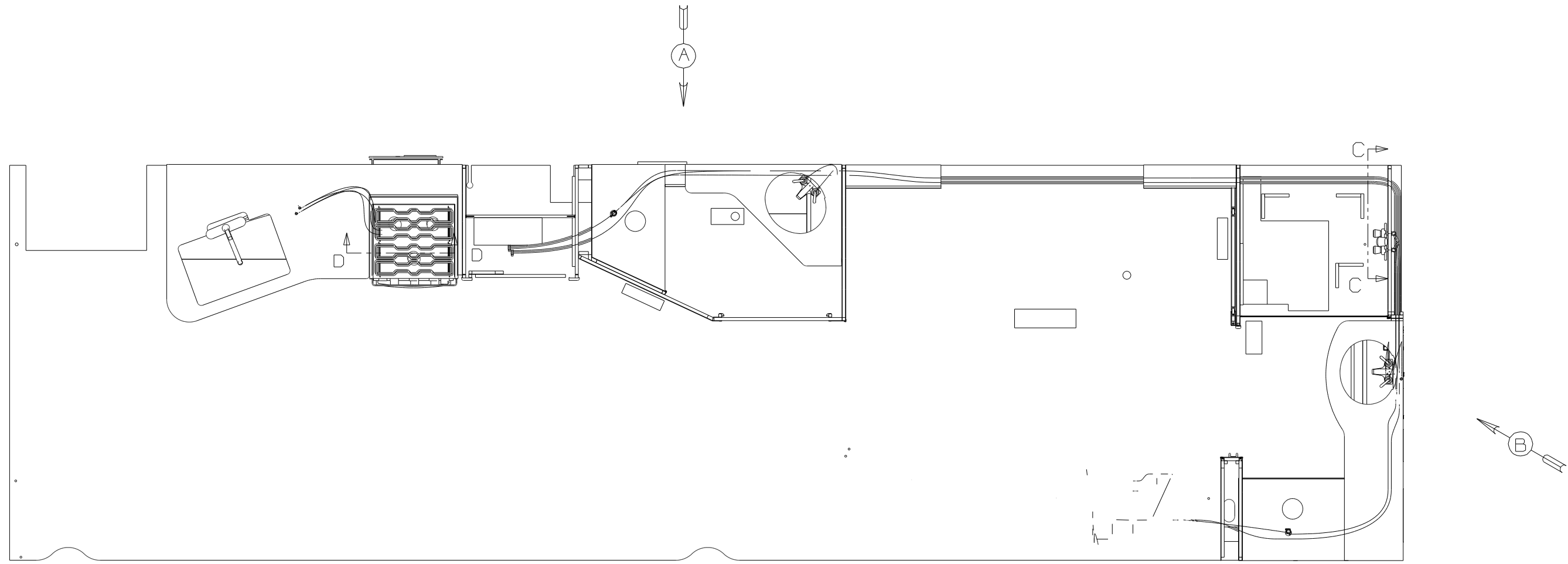
TOP VIEW SHOWING TANKS AND DRAINS



- PUMP-MACERATION 165762-02-000
- SCREW 000639-08-24U(4)
- HOSE 177021-01-000 (6000)
- CLAMP 062401-01-000 (2)
- WIRE TIES 008343-03-000 (6)



FIRST USED	11 E35F
DO NOT SCALE DRAWING	
TITLE:	DRAINAGE SYSTEM INSTL
SHEET 4	PART NO 175317 REV



- 11 CHECK VALVE IS INSTALLED TO PREVENT WATER FROM LEAVING WATER HEATER.
- 10 CHECK VALVE IS INSTALLED TO PREVENT WATER FROM ENTERING WATER HEATER.
- 9 ADD PIPE WRAP (LADDER SCRAP) INSULATION HERE.
- 8 LABEL HOT AND COLD SUPPLY TUBES.
- 7 TAPE FITTING TO TUBE BEFORE CABINET SET TO PREVENT FITTING FROM MOVING.
- 6 ADD TEFLON TAPE 10405-01-000.
- 5 ADD TEFLON TAPE 10405-02-000.
- 4 FLUSHING SYSTEM REQUIRES 125697-06-000 INSTRUCTION SHEET.

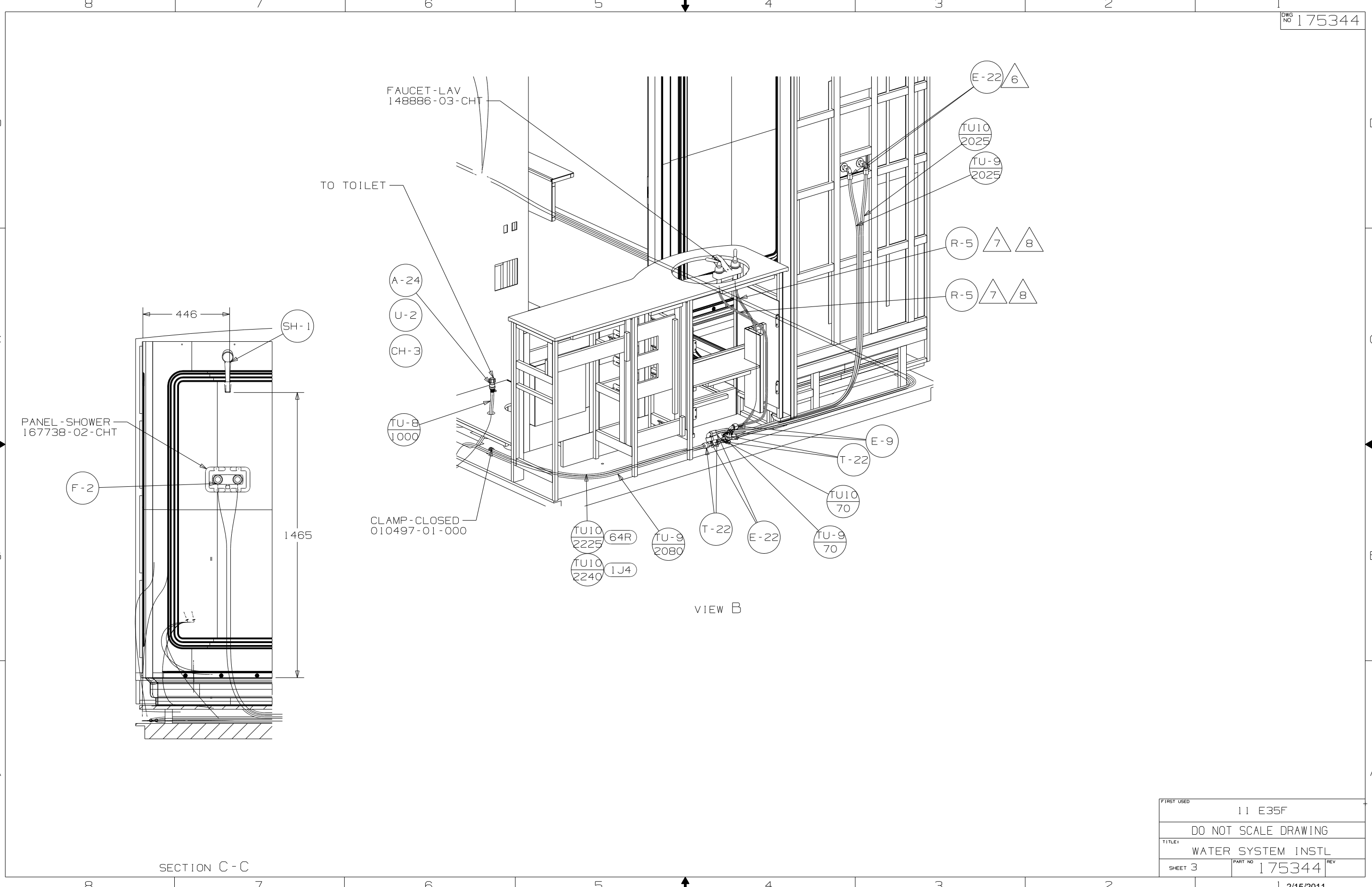
- 3. ALL TUBING TO BE SECURED AT 1200 INTERVALS MAXIMUM WITH CLAMP 10495-01-000 AND SCREW G67-10-12B OR EQUIVALENT.
- 2. TUBING TO BE INSTALLED WITH SUFFICIENT SLOPE TO PROVIDE DRAINAGE TO NEAREST VALVE.
- 1. PLASTIC FITTINGS TO BE SEALED WITH SEALANT 84456-01-000.

NOTES:

- 1J4 EXT WASH STATION - WITHOUT
- 64R EXTERIOR WASH STATION
- 53F WATER HEATER-ELEC. IGNITION
- 53D WTR HTR-6GAL/ELE/LP/MOTORAID

WINNEBAGO		COPYRIGHT 2011 WINNEBAGO INDUSTRIES, INC.	
DFTR	ORIG. DATE	ALL DIMENSIONS ARE IN MILLIMETERS	
CHKR		FIRST USED	
P.E.		11 E35F	
M.E.		UNSPECIFIED TOLERANCES ARE:	
DSNR		MATERIAL:	
		WHOLE DIM (X)	: 3
		ONE-PLACE (X.X)	: 1.5
		TWO-PLACE (X.XX)	: 0.50
		ANGLE	: 1°
		THIRD ANGLE PROJECTION	
DO NOT SCALE DRAWING		REFER TO ES0018 FOR FASTENER TIGHTENING GUIDELINES	
TITLE: WATER SYSTEM INSTL			
SHEET 1 OF 5	PART NO 175344	REV	
REF:	1 2/15/2011		

X-X
FOR
WATER
CALLOUTS
SEE DWG NO
116230-01-000



SECTION C - C

VIEW B

FIRST USED	11 E35F	
TITLE	DO NOT SCALE DRAWING	
	WATER SYSTEM INSTL	
SHEET 3	PART NO 175344	REV

TANK ASM-WATER
174701-02-000

INSULATION-DRAINAGE COMPT
120050-42-000

INSULATION
168508-32-000

INSULATION-DRAINAGE COMPT
120050-42-000 (3)

STL-TUBE
123963-17-CHT

INSULATION-DRAINAGE COMPT
120050-42-000 (3)

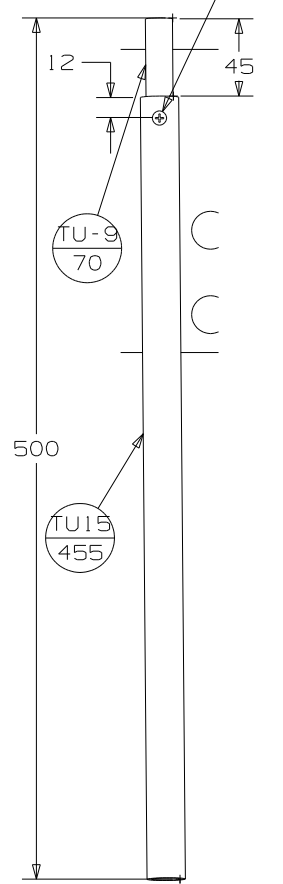
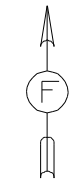
BRACKET-ANGLE, W/HOLES
094756-02-CHT

433

5642

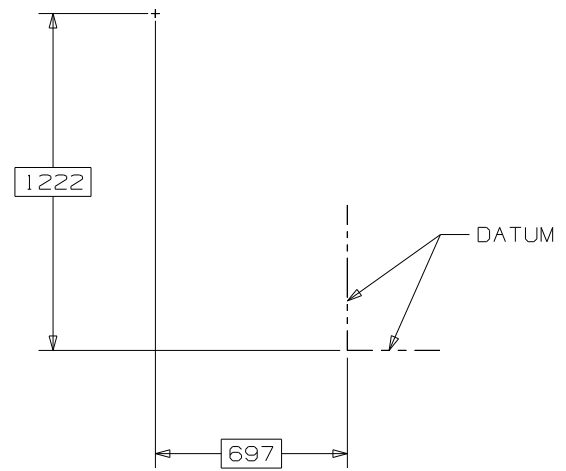
248

SCREW
000660-08-12U



DETAIL DA
(SHOWN W/O E-42)

SHOWING ONLY TANKS AND DRAINS

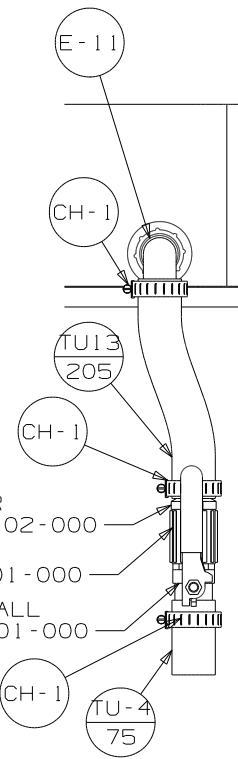


DETAIL DA

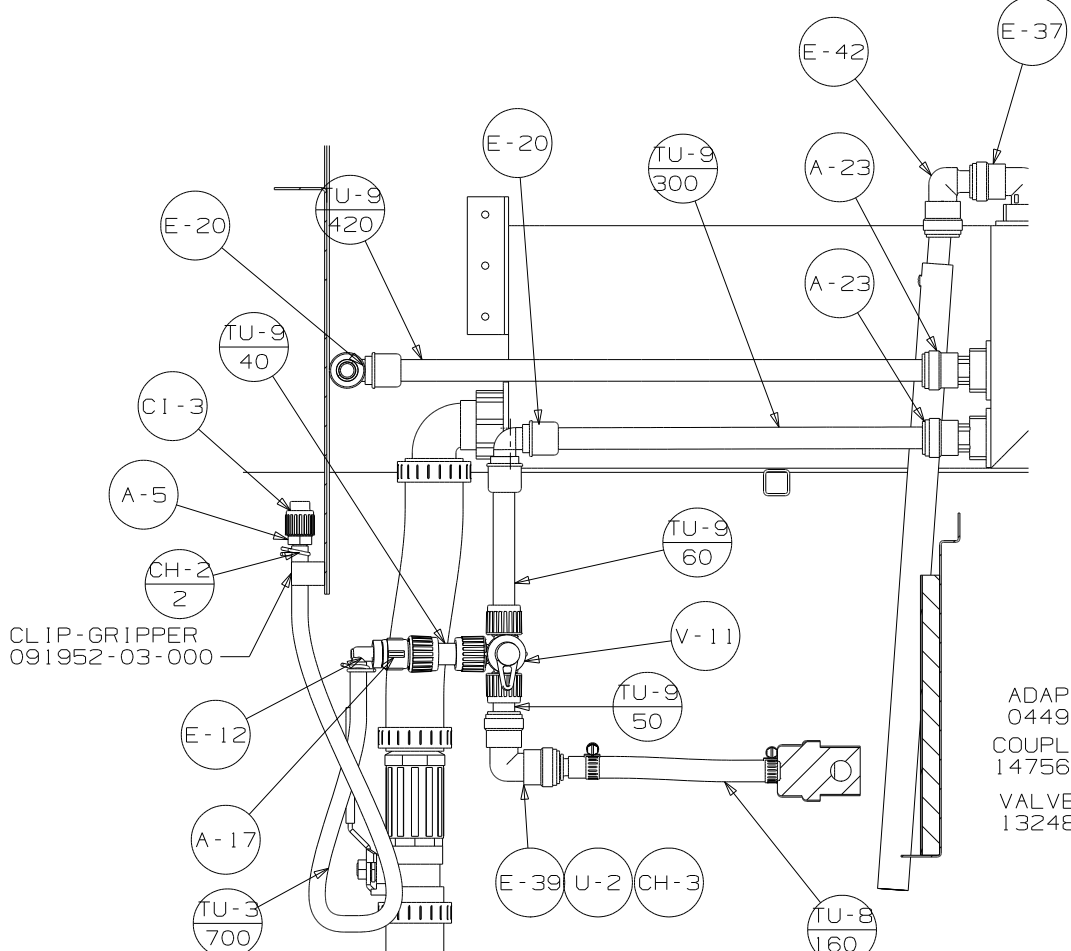
SECTION G-G

ADAPTER
044927-02-000
COUPLER
147564-01-000
VALVE-BALL
132483-01-000

CH-1 TU-4 75

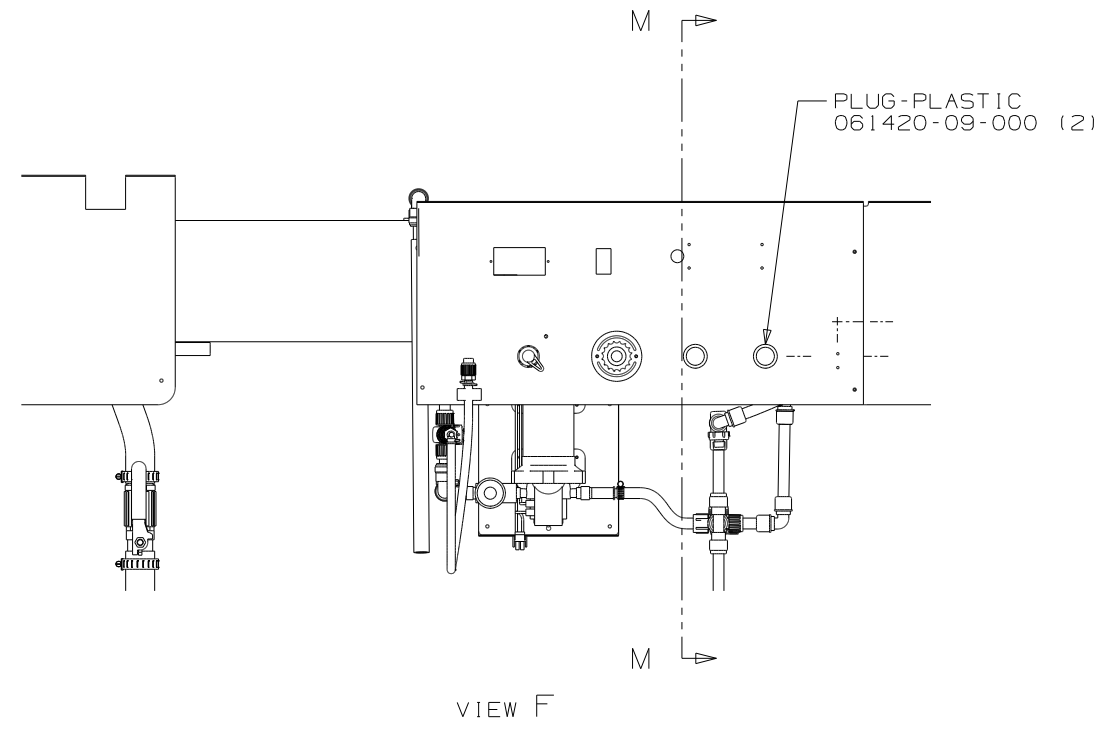
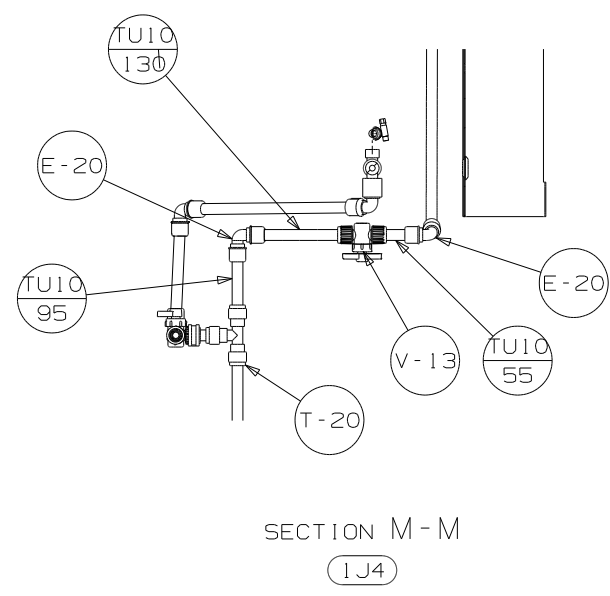
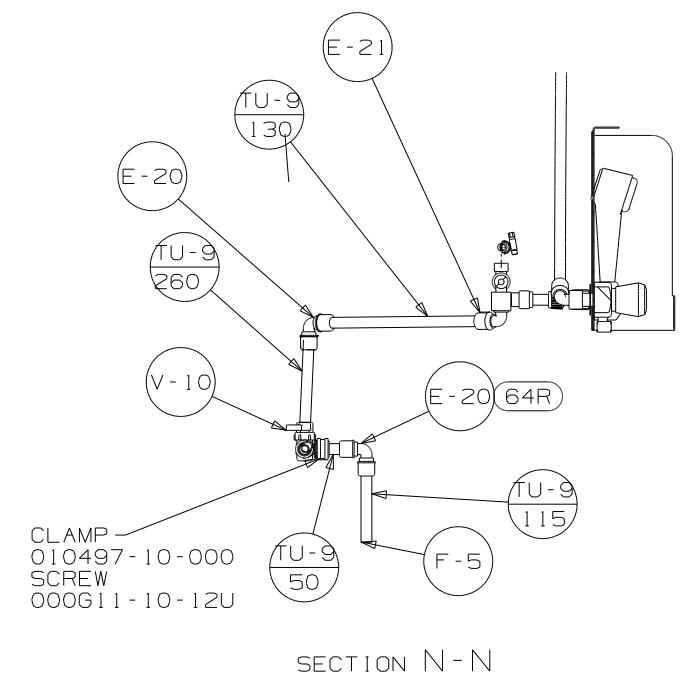
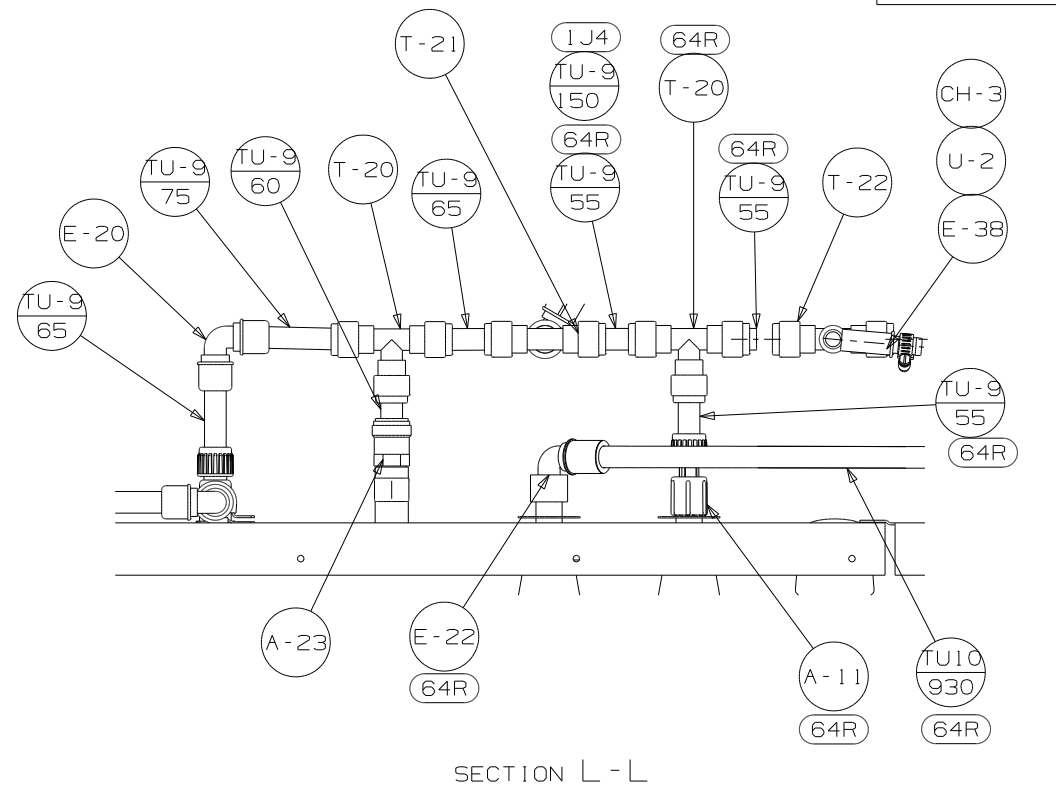
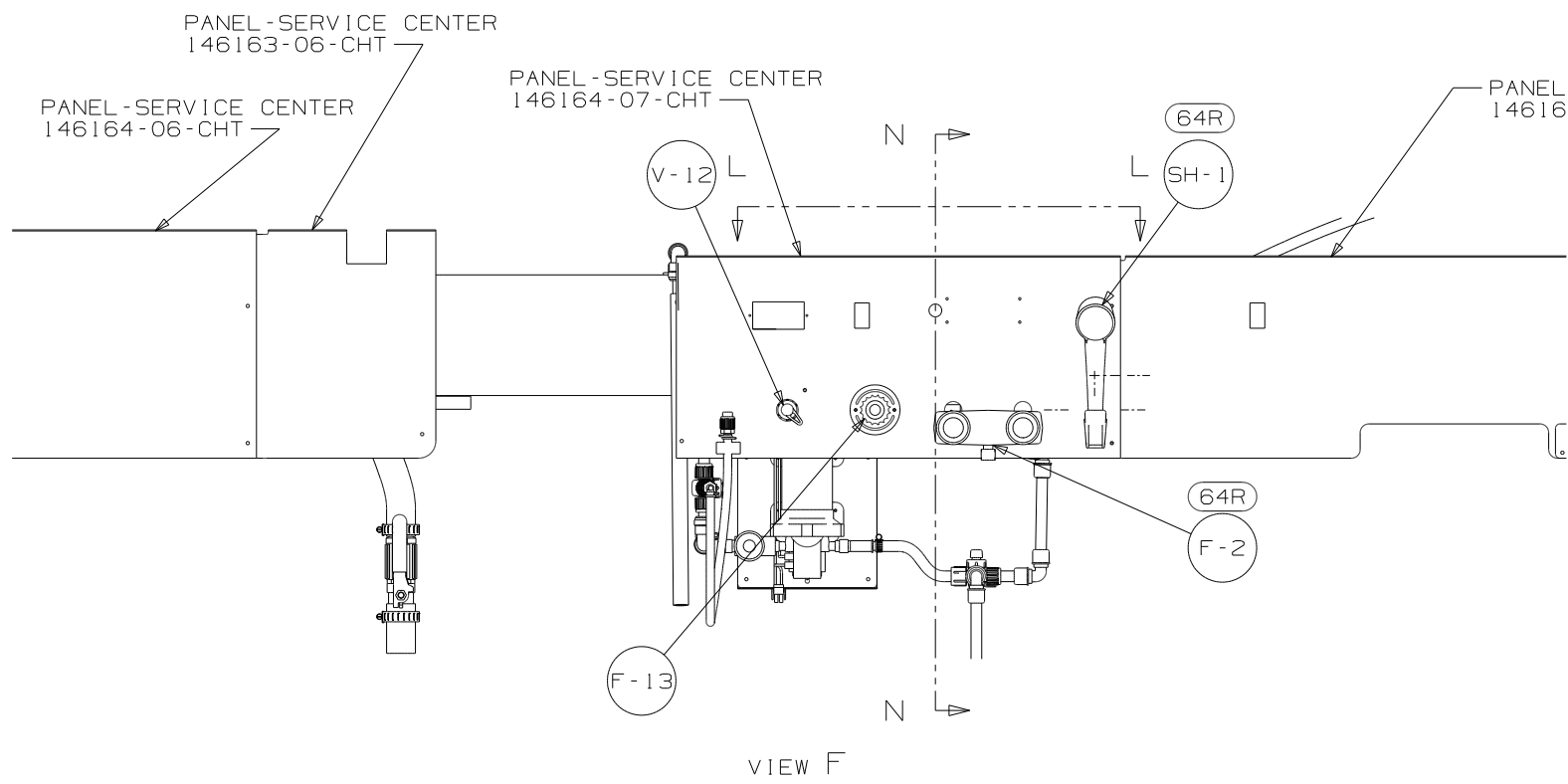


CLIP-GRIPPER
091952-03-000



SECTION K-K
(ROTATED)

FIRST USED	11 E35F		
TITLE:	DO NOT SCALE DRAWING		
TITLE:	WATER SYSTEM INSTL		
SHEET 4	PART NO	175344	REV



CLAMP 010497-10-000
SCREW 000G11-10-12U

FIRST USED	11 E35F		
TITLE:	DO NOT SCALE DRAWING		
TITLE:	WATER SYSTEM INSTL		
SHEET 5	PART NO	175344	REV