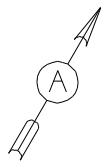
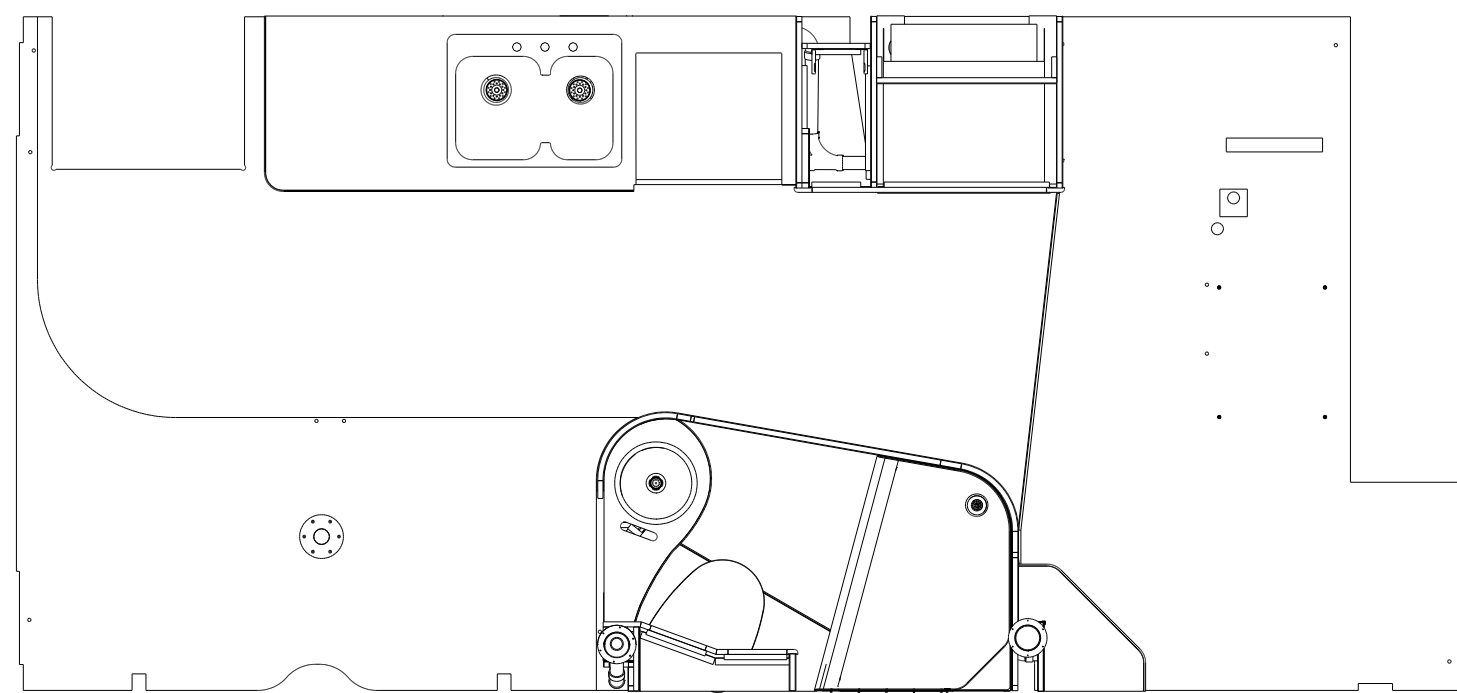


DWG NO	MODEL	DETAIL
174503-01	226Q	G
174503-02	226QP	H

RELEASE	REV DATE	DWG NO
A		174503
REV ZONE	REVISION RECORD	DATE



- 10. USE SMOOTH PLUMBERS PUTTY 167459-01-000 TO SEAL STRAINER (0.2 PER STRAINER).
- 9. PREP THE SURFACE PER MANUFACTURERS INSTRUCTIONS, BEFORE APPLYING THE HEATING PAD.
- 8. SECURE DRAINAGE PIPES TO CABINET USING WIRE TIE 108046-02-000, AND SCREW 00067-10-12B AT INTERVALS OF NOT OF NOT MORE THAN 4 FEET APART.
- 7. SECURE VENT PIPE TO FLOOR WITH CLAMP 062401-02-000 (2), SCREW 00067-10-12B (2), BRACKET 136878-01-CHT (2).
- 6. VENT PIPE MUST PROJECT 51 MIN AND 64 MAX ABOVE ROOF FOR PROPER FIT AND FUNCTION.
- 5. SEAL AROUND SHOWER WITH SILICONE.
- 4. SEE WIRING INSTL-BODY, 12V FOR ELECTRICAL CONNECTION.
- 3. ALL PIPE AND FITTINGS TO BE ASSEMBLED WITH SOLVENT 004020-01-000 (USA), 004020-02-000 (CAN)
- 2. SLOPE OF TRAP ARM MUST BE 6 PER 305 mm.
- 1. SLOPE OF HORIZONTAL PIPING TO BE MINIMUM OF 3 PER 305 mm.

- 43E TOILET-PORCELAIN-ROUND
- 644 GREAT ALASKAN RENTAL PACKAGE
- 464 TOILET
- 265 CODES/STANDARDS-CSA/CMVSS
- 23T DRAINAGE SYSTEM-HEATED
- 1B1 CODES/STANDARDS USA

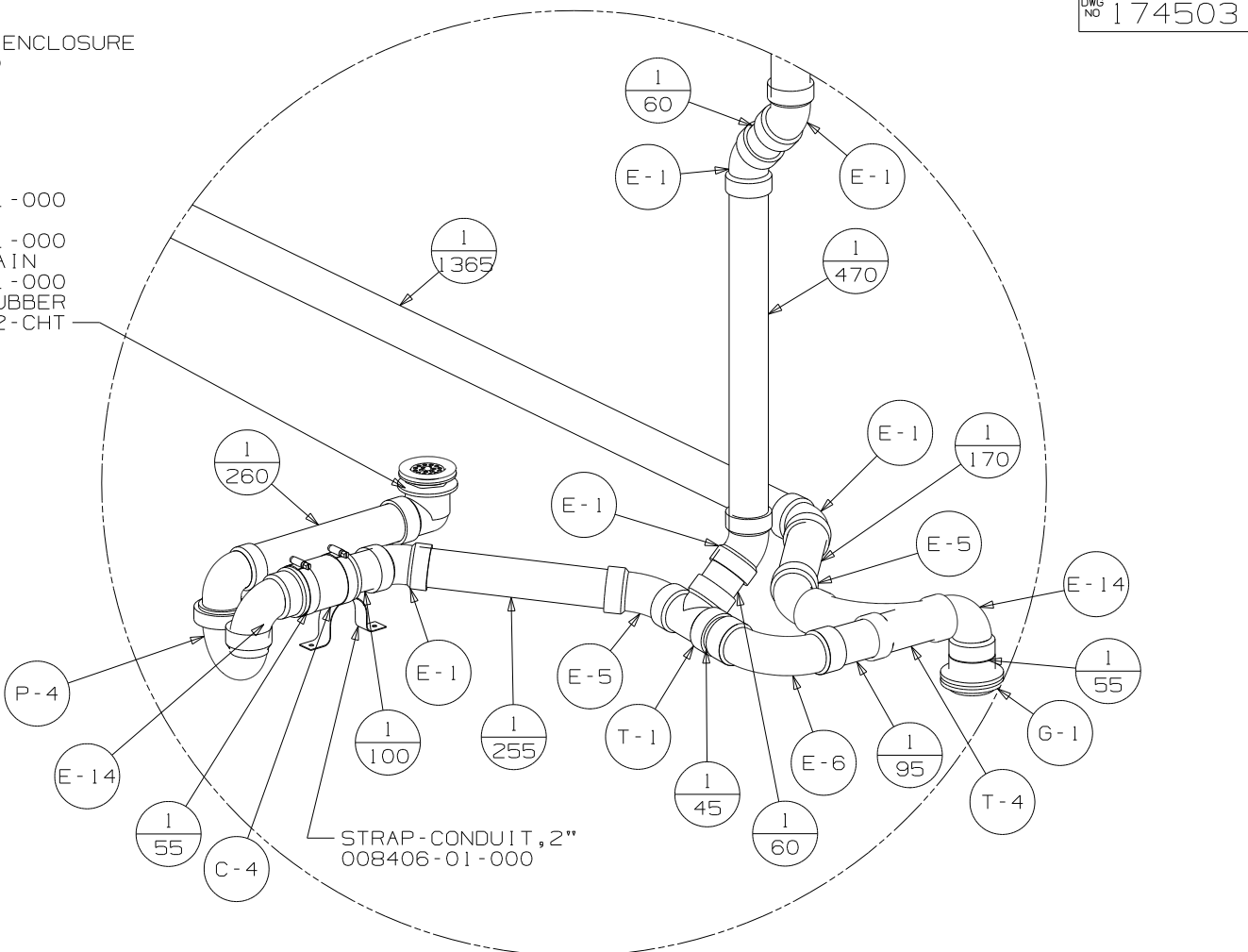
WINNEBAGO		COPYRIGHT 2011 WINNEBAGO INDUSTRIES, INC.	
DFTR	ORIG. DATE	ALL DIMENSIONS ARE IN MILLIMETERS	
CHKR		FIRST USED	
P.E.		11 226Q	
M.E.		UNSPECIFIED TOLERANCES ARE:	
DSNR		MATERIAL:	
		WHOLE DIM (X)	: 3
		ONE-PLACE (X.X)	: 1.5
		TWO-PLACE (X.XX)	: 0.50
		ANGLE	: 1°
		THIRD ANGLE PROJECTION	
DO NOT SCALE DRAWING		REFER TO ES0018 FOR FASTENER TIGHTENING GUIDELINES	
TITLE: DRAINAGE SYSTEM INSTL			
SHEET 1 OF 4	PART NO	174503	REV

FOR
DRAINAGE
CALLOUTS
SEE DWG NO
116229-01-000

SINK-LAV
151679-01-CHT
SEAL
091255-02-000 (A/R)
STRAINER
163569-01-000
TAIL PIECE
011069-05-000

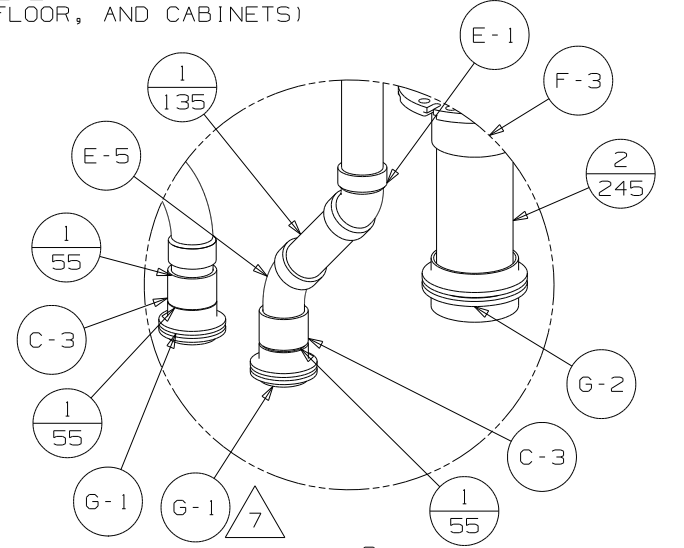
SHOWER INSTL-ENCLOSURE
169813-02-000

STRAINER
066440-01-000
SEALER
069640-01-000
ELBOW-DRAIN
131486-01-000
WASHER-RUBBER
127440-02-CHT



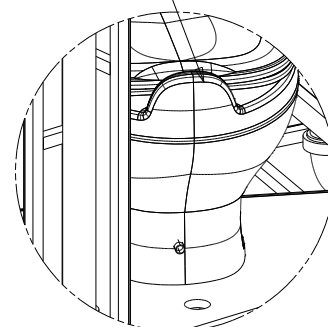
DETAIL D
(SHOWN W/OUT SHOWER, FLOOR, AND CABINETS)

TOILET-STYLE 11
160815-04-CHT (43E)
SCREW
087721-01-000 (6)

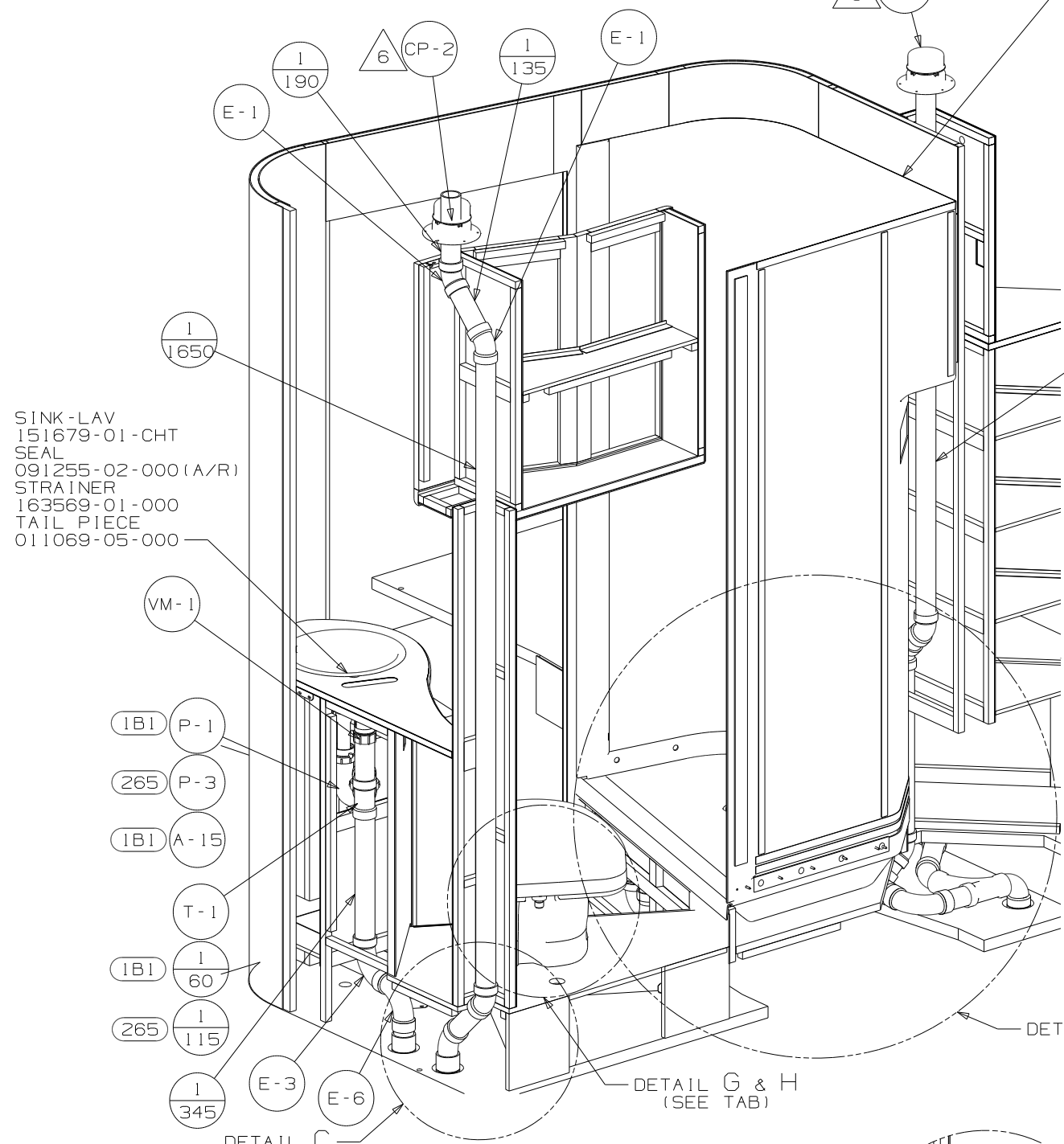


DETAIL C
(SHOWN W/OUT FLOOR AND CABINETS)

TOILET
147421-05-CHT (464)
160815-02-CHT (644)
SCREW
087721-01-000 (6)

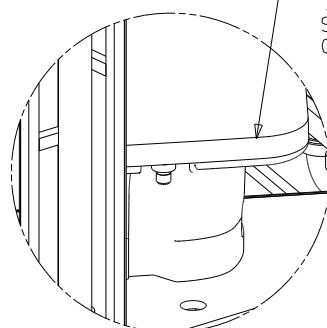


DETAIL H



VIEW A

DETAIL G & H
(SEE TAB)



DETAIL G

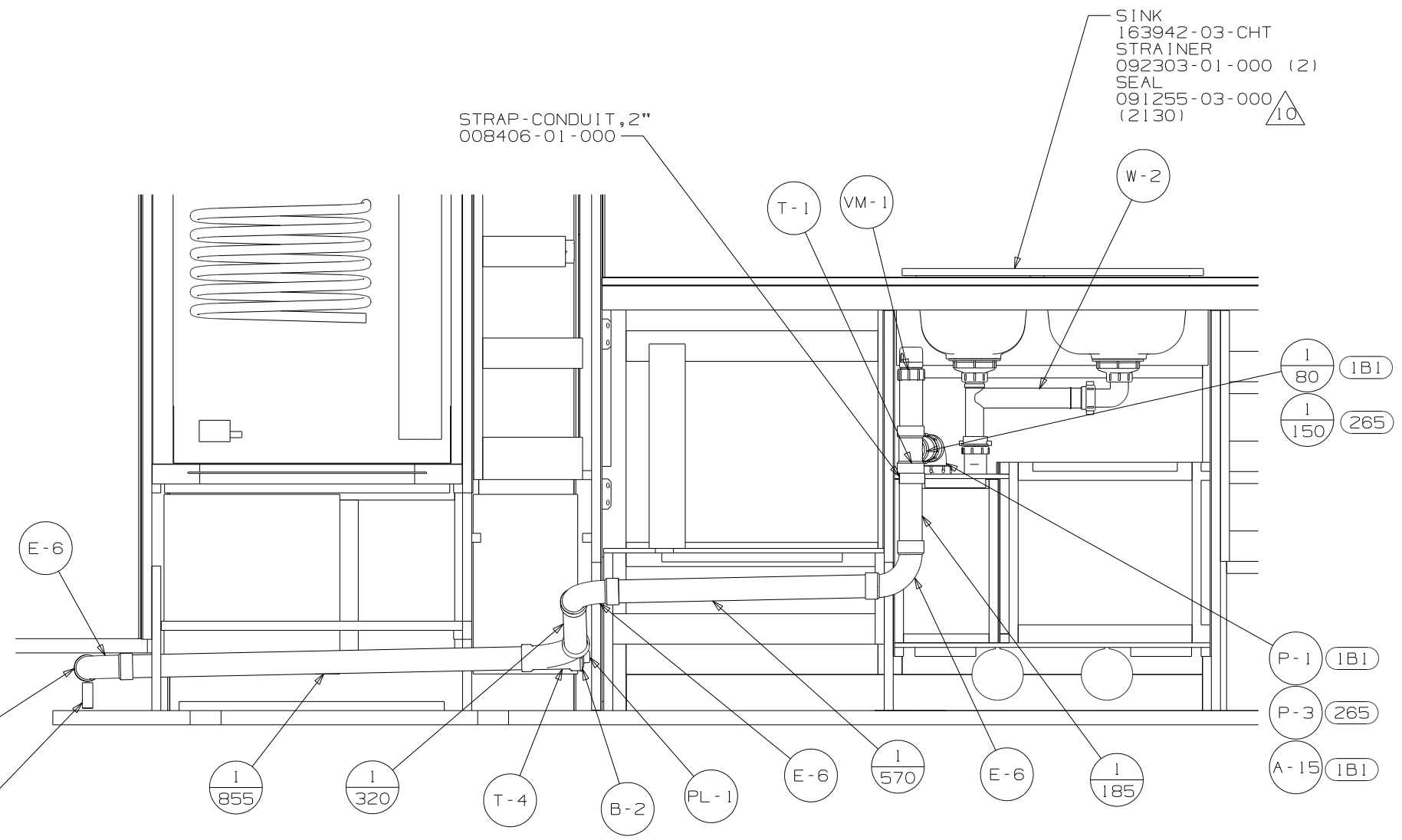
FIRST USED	11 2260
DO NOT SCALE DRAWING	
TITLE:	DRAINAGE SYSTEM INSTL
SHEET 2	PART NO 174503 REV

SINK
163942-03-CHT
STRAINER
092303-01-000 (2)
SEAL
091255-03-000
(2130) $\triangle 10$

STRAP-CONDUIT, 2"
008406-01-000

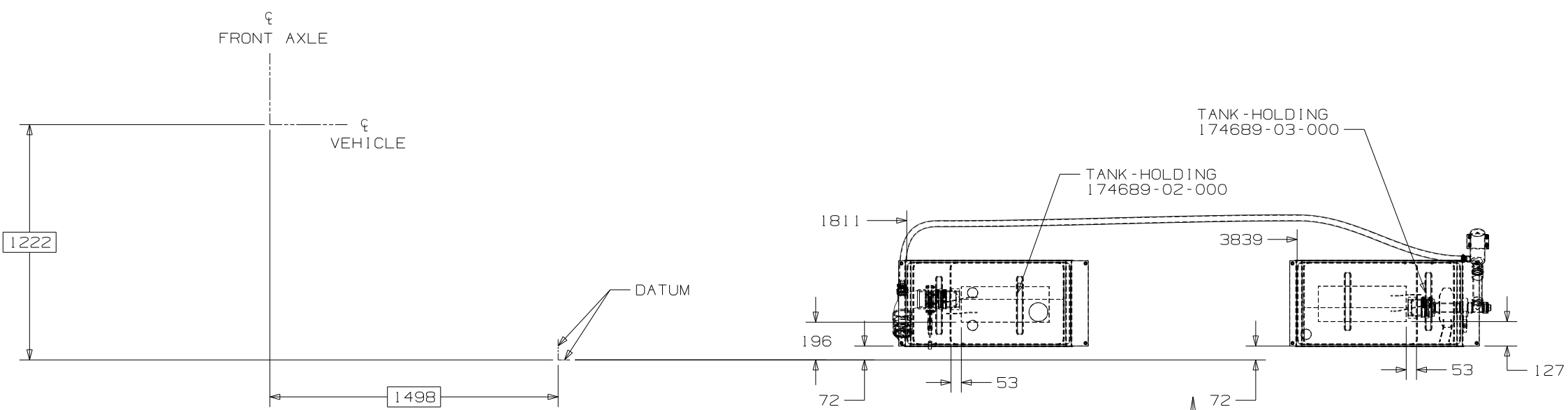
TO TANK
UNDER SHOWER

STRAP-CONDUIT, 2"
008406-01-000

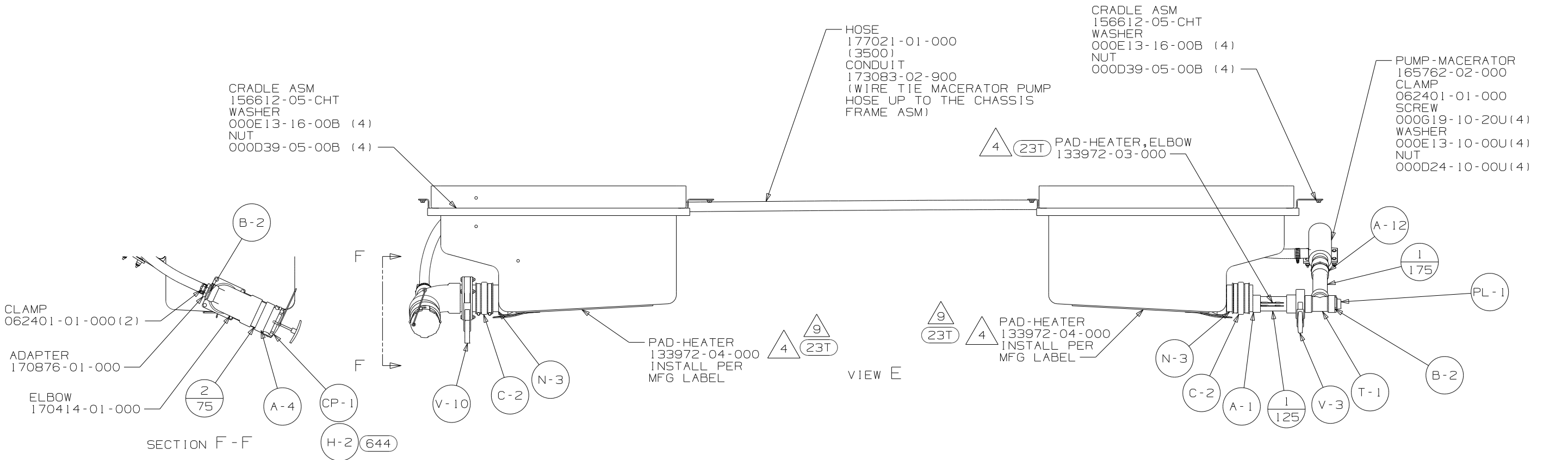


VIEW B
(ROTATED)

FIRST USED	11 2260		
TITLE	DO NOT SCALE DRAWING		
	DRAINAGE SYSTEM INSTL		
SHEET 3	PART NO	174503	REV
			1 1/5/2011



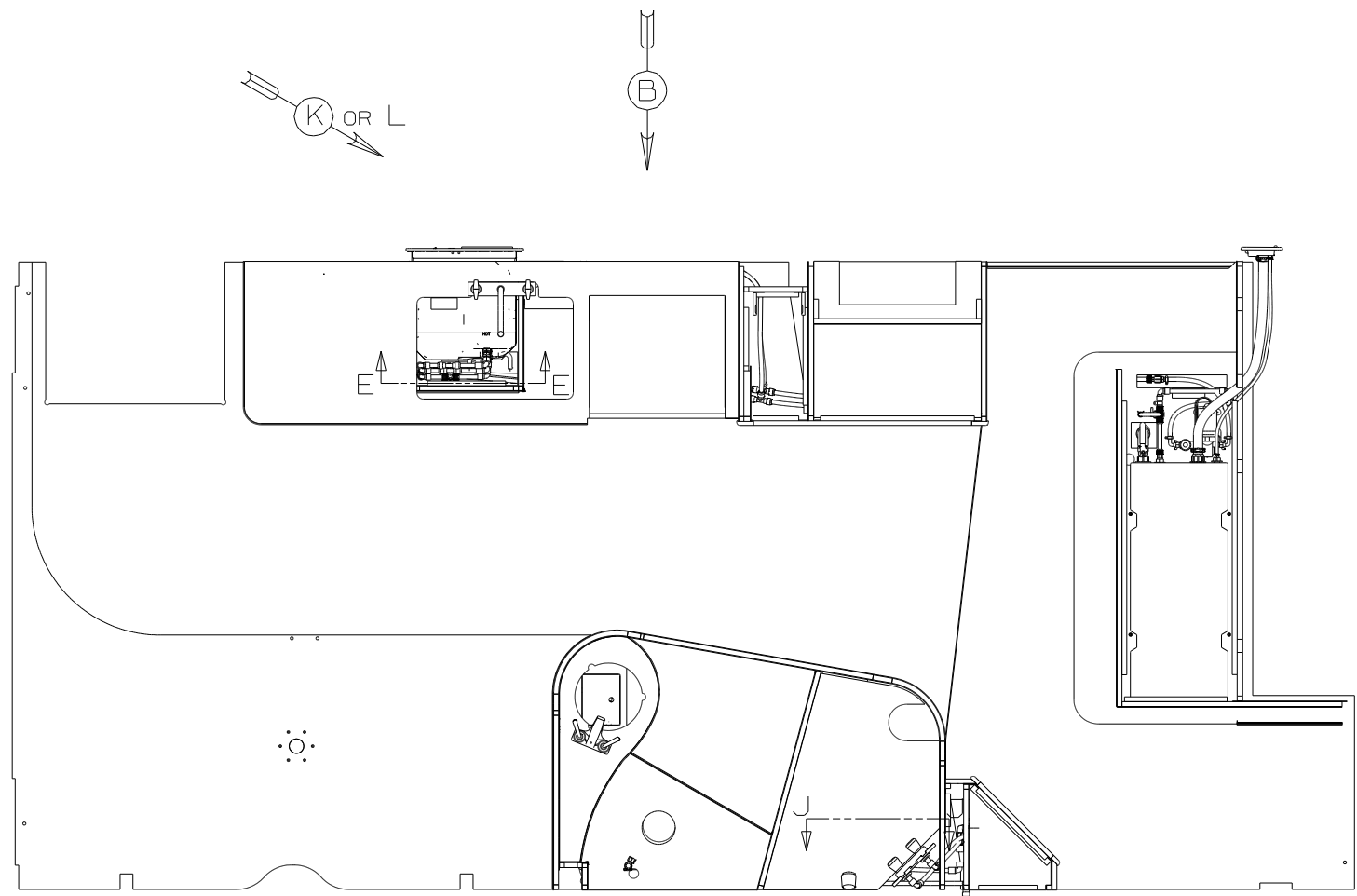
DRAFT_TOP@7
SHOWING TANKS AND DRAINS ONLY



FIRST USED	11 2260
DO NOT SCALE DRAWING	
TITLE:	DRAINAGE SYSTEM INSTL
SHEET 4	PART NO 174503 REV
1 15/2011	

DWG NO	MODEL	VIEW/DETAIL
174502-01	226Q	K, M
174502-02	226QP	L, N

RELEASE	REV DATE	DWG NO
A		174502
REV ZONE	REVISION RECORD	DATE
		DFTR-ORIG



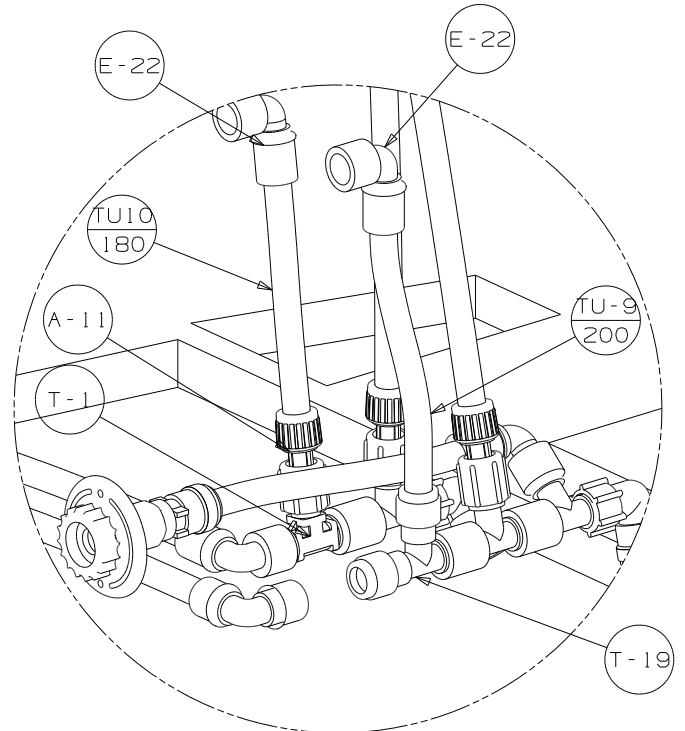
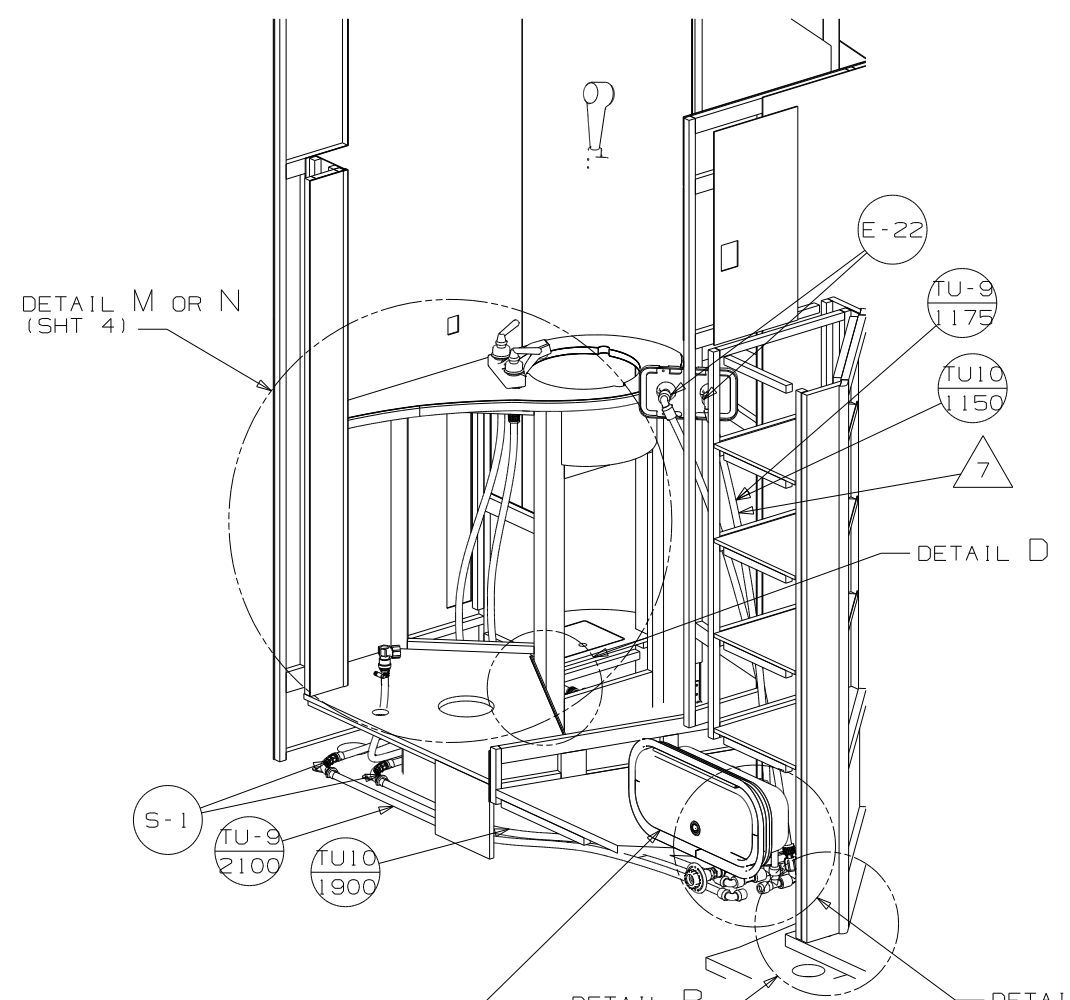
- 12. INSTALL BYPASS PLUG FOR SYSTEM TESTING AND SHIPPING.
- 11. ATTACH WASHER-PLASTIC 087080-13-CHT W/TAPE-DOUBLE 123816-03 ON BOTTOM SIDE OF FLOOR.
- 10. ATTACH WASHER-PLASTIC 087080-11-CHT W/TAPE-DOUBLE 123816-03 ON BOTTOM SIDE OF COMPARTMENT.
- 9. LABEL THE HOT AND COLD SUPPLY RISER TUBES AND TAPE FITTING TO TUBE BEFORE CABINET SET TO PREVENT MOVEMENT.
- 8. NOT REQUIRED W/ (644) FEATURE.
- 7. ADD PIPE WRAP (LADDER SCRAP 110157-02-000) INSULATION.
- 6. ADD TEFLON TAPE 010405-03-000.
- 5. ADD TEFLON TAPE 010405-02-000.
- 4. ADD TEFLON TAPE 010405-01-000.
- 3. ALL TUBING TO BE SECURED AT 1200 INTERVALS MAXIMUM WITH CLAMP 010495-01-000 AND SCREW 000667-10-12B OR EQUIVALENT.
- 2. TUBING TO BE INSTALLED WITH SUFFICIENT SLOPE TO PROVIDE DRAINAGE TO NEAREST VALVE OR TANK.
- 1. PLASTIC FITTINGS TO BE SEALED WITH SEALANT 084456-01-000.

- (64V) SIDEWALL-PREMIUM HIGH GLOSS
- (64T) SIDEWALLS-HIGH GLOSS
- (64R) EXTERIOR WASH STATION
- (53Z) WTR HTR-6GAL/110/LP/MTR/AUTO
- (1J4) EXT WASH STATION - WITHOUT
- (53F) WATER HEATER-ELEC. IGNITION
- (53E) WATER SYS WINTERIZATION PKG
- (644) GREAT ALASKAN RENTAL PACKAGE

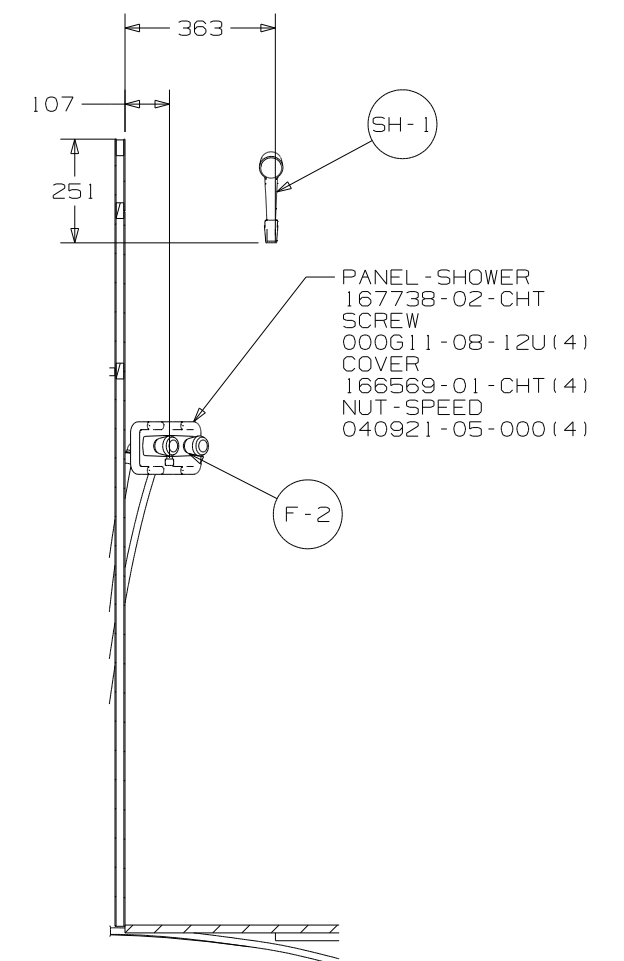
WINNEBAGO COPYRIGHT 2011 WINNEBAGO INDUSTRIES, INC.

DFTR	ORIG. DATE
CHKR	ALL DIMENSIONS ARE IN MILLIMETERS
P.E.	
M.E.	FIRST USED
DSNR	11 226Q/OP
UNSPECIFIED TOLERANCES ARE:	MATERIAL:
WHOLE DIM (X)	: 3
ONE-PLACE (X.X)	: 1.5
TWO-PLACE (X.XX)	: 0.50
ANGLE	: 1°
THIRD ANGLE PROJECTION	
DO NOT SCALE DRAWING	REFER TO ES0018 FOR FASTENER TIGHTENING GUIDELINES
TITLE:	WATER SYSTEM INSTL
SHEET 1 OF 4	PART NO 174502 REV
REF:	1 3/29/2011

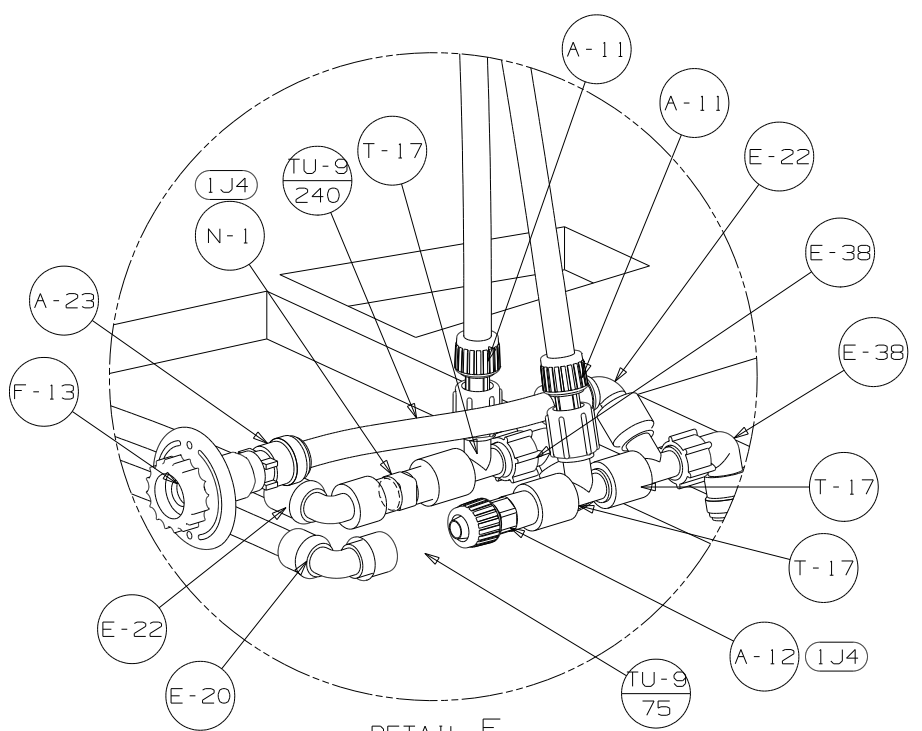
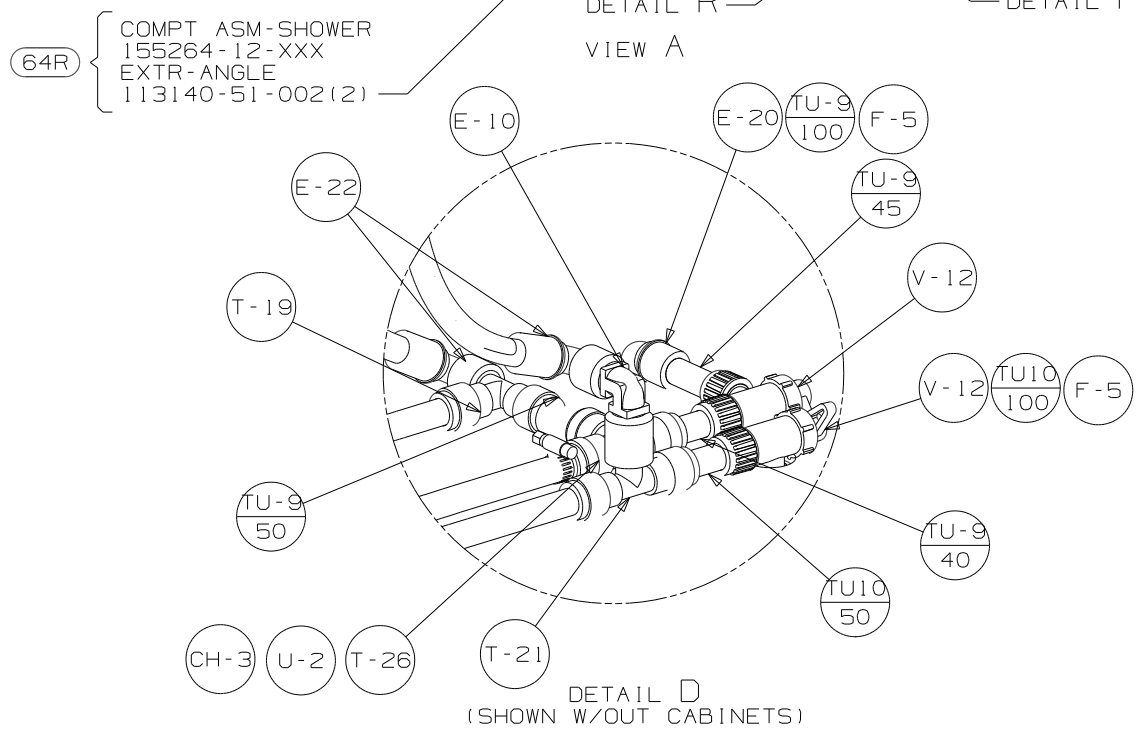
FOR WATER CALLOUTS SEE DWG NO 116230-01-000



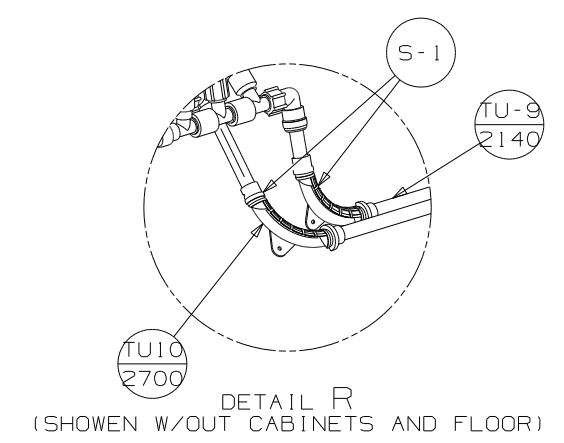
DETAIL F
(SHOWN W/OUT COMPT-ASM SHOWER AND CABINETS)
64R



SECTION J-J

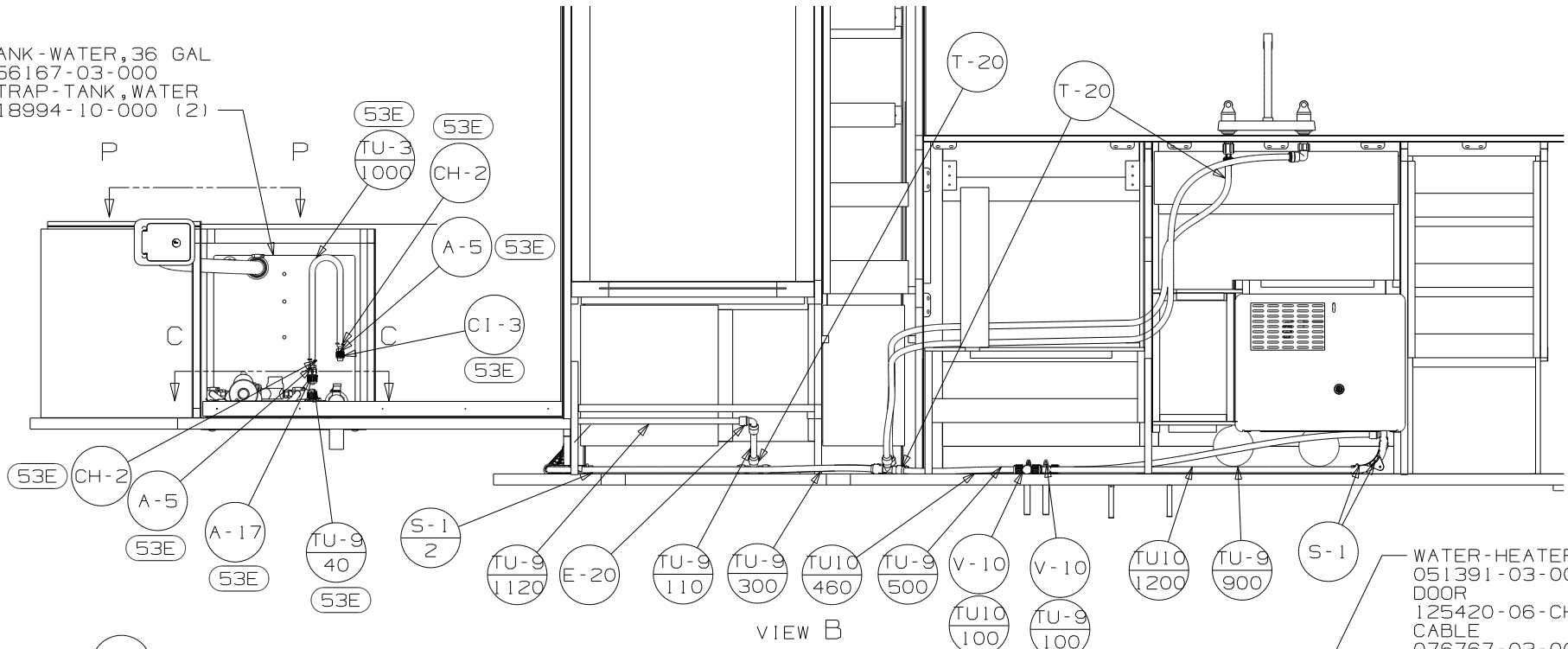


DETAIL F
(SHOWN W/OUT COMPT-ASM SHOWER AND CABINETS)

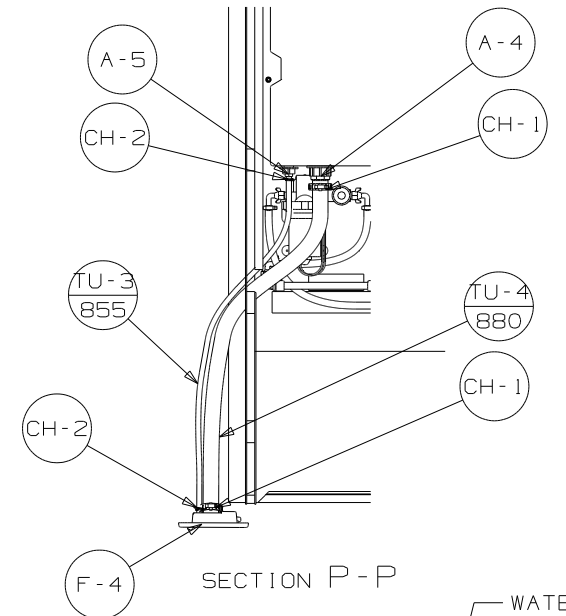


FIRST USED	11 2260/OP
TITLE:	DO NOT SCALE DRAWING
	WATER SYSTEM INSTL
SHEET 2	PART NO 174502 REV

TANK-WATER, 36 GAL
 156167-03-000
 STRAP-TANK, WATER
 118994-10-000 (2)



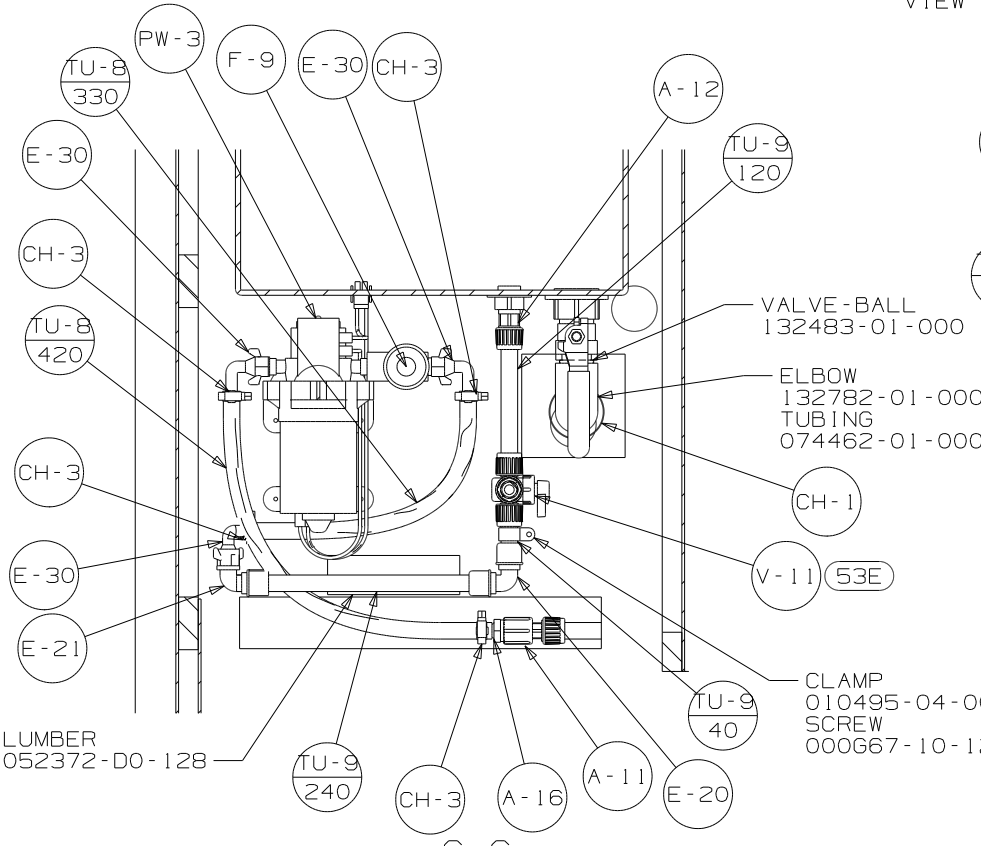
VIEW B



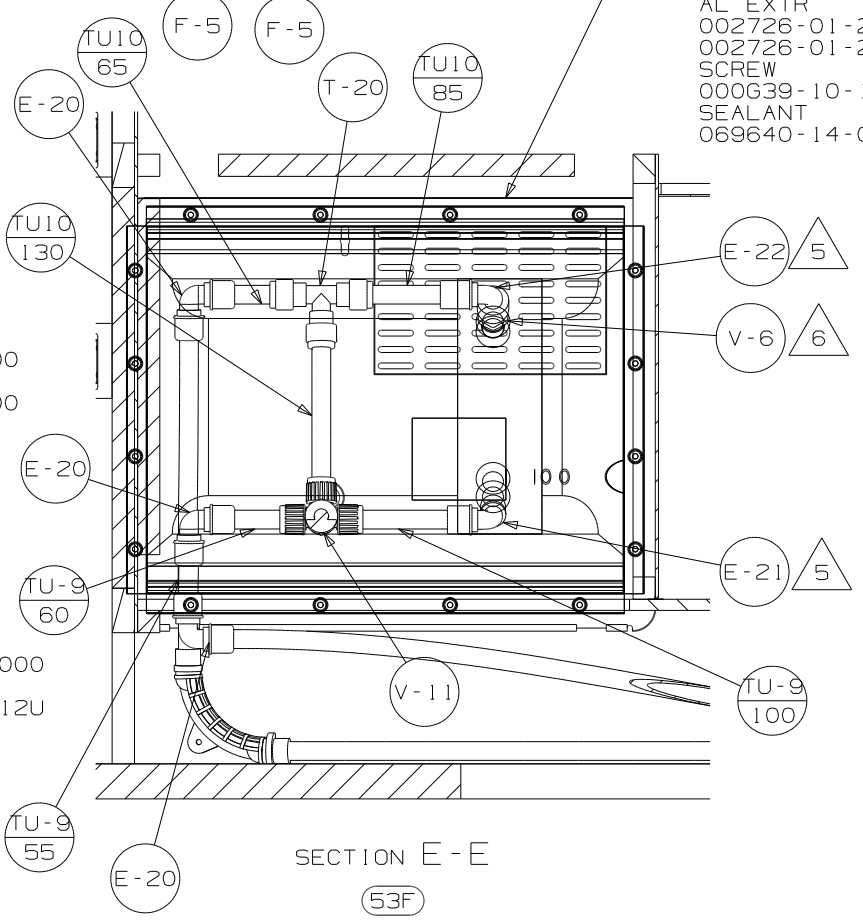
SECTION P-P

WATER-HEATER
 051391-03-000
 DOOR
 125420-06-CHT
 CABLE
 076767-03-000
 AL EXTR
 002726-01-210 (2)
 002726-01-212 (2)
 SCREW
 000G39-10-169 (18)
 SEALANT
 069640-14-000

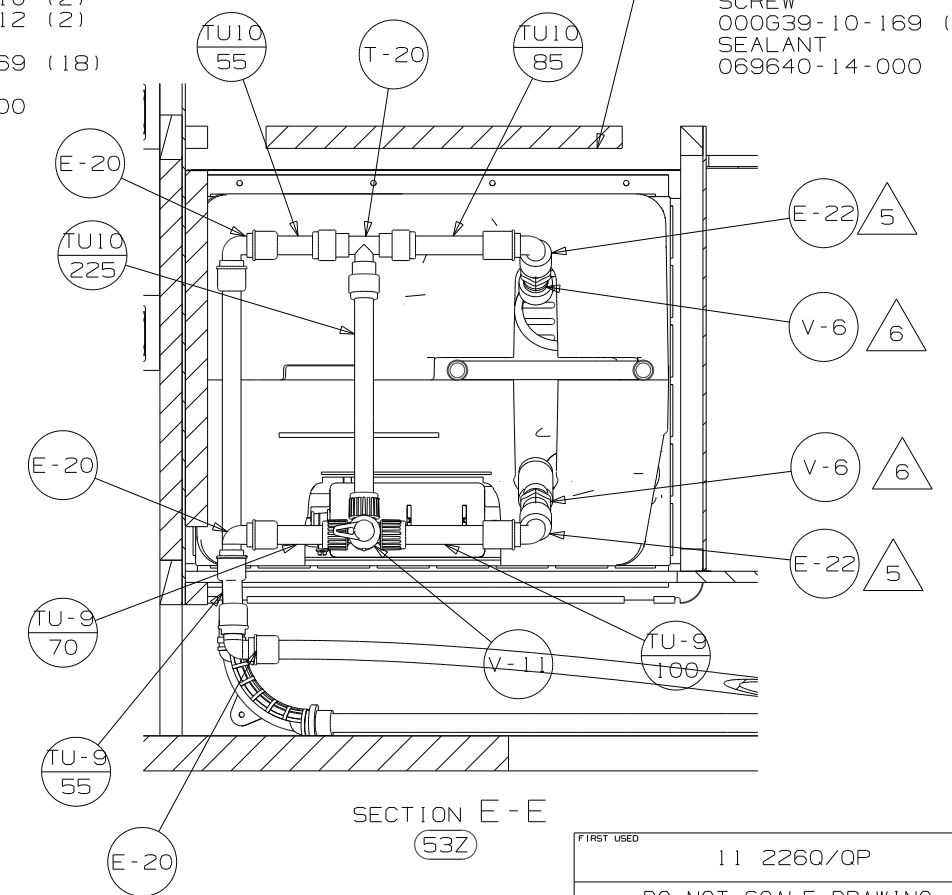
WATER-HEATER
 145541-02-000
 DOOR
 125420-06-CHT
 CABLE
 076767-03-000
 AL EXTR
 002726-01-210 (2)
 002726-01-212 (2)
 SCREW
 000G39-10-169 (18)
 SEALANT
 069640-14-000



SECTION C-C

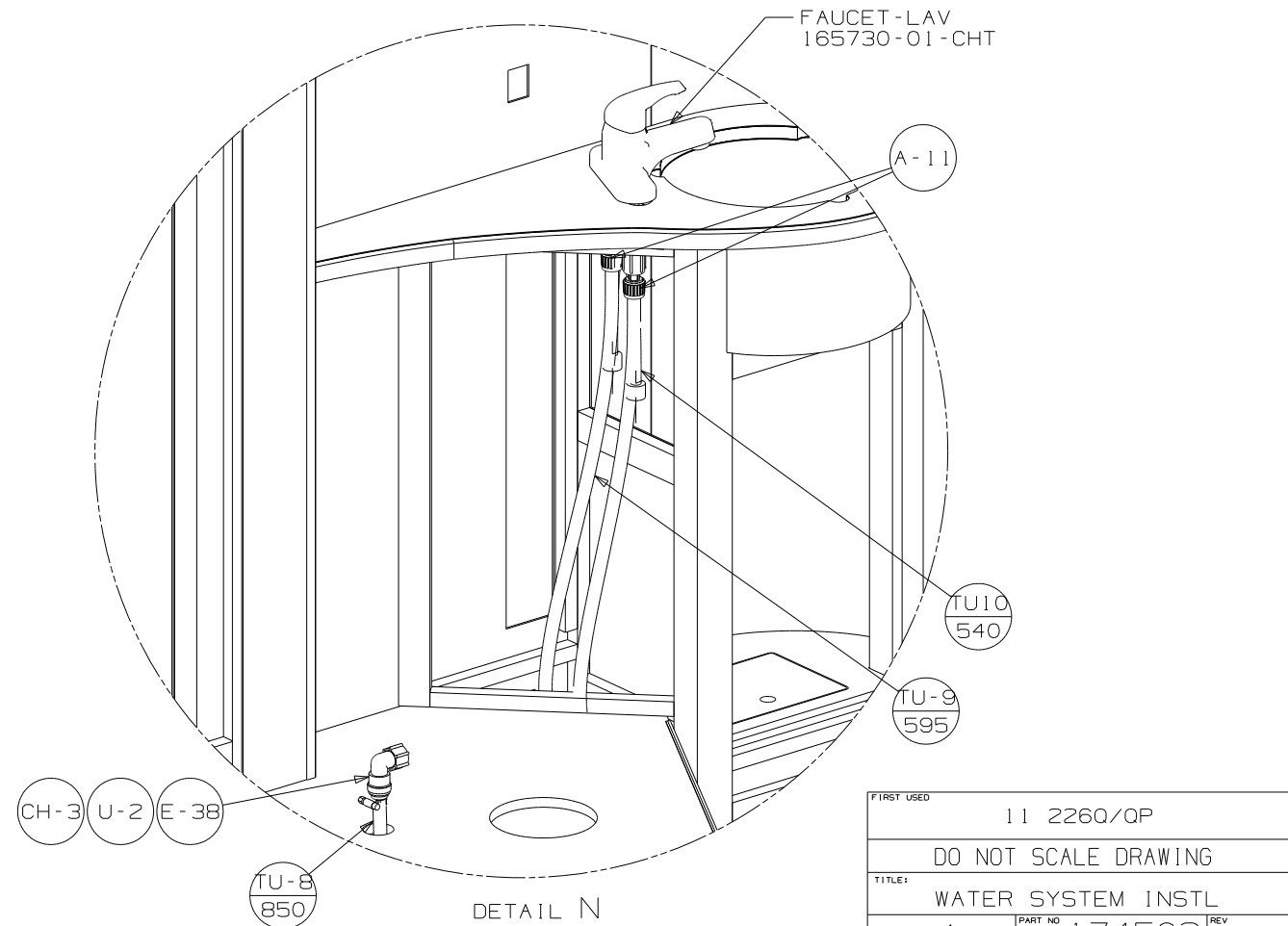
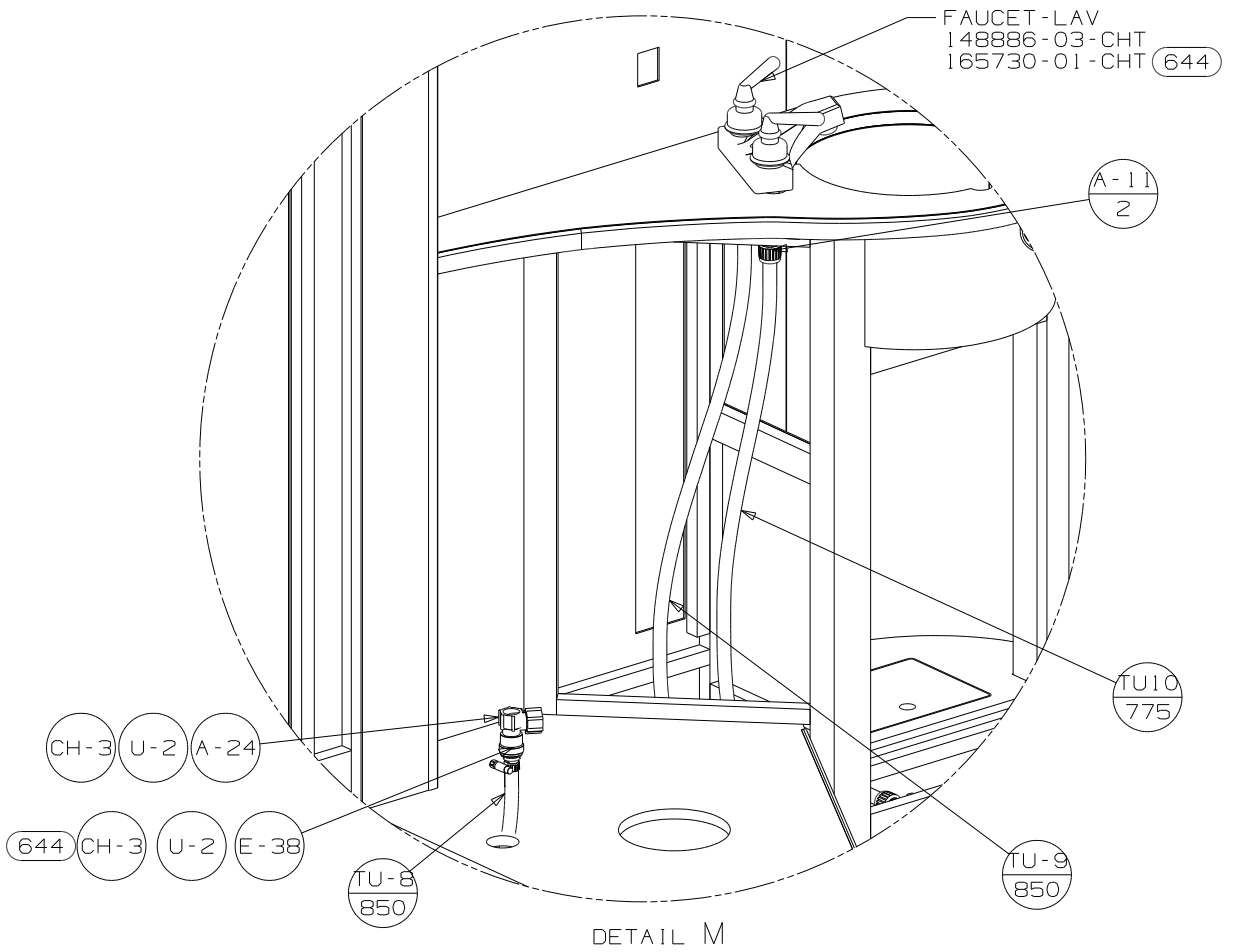
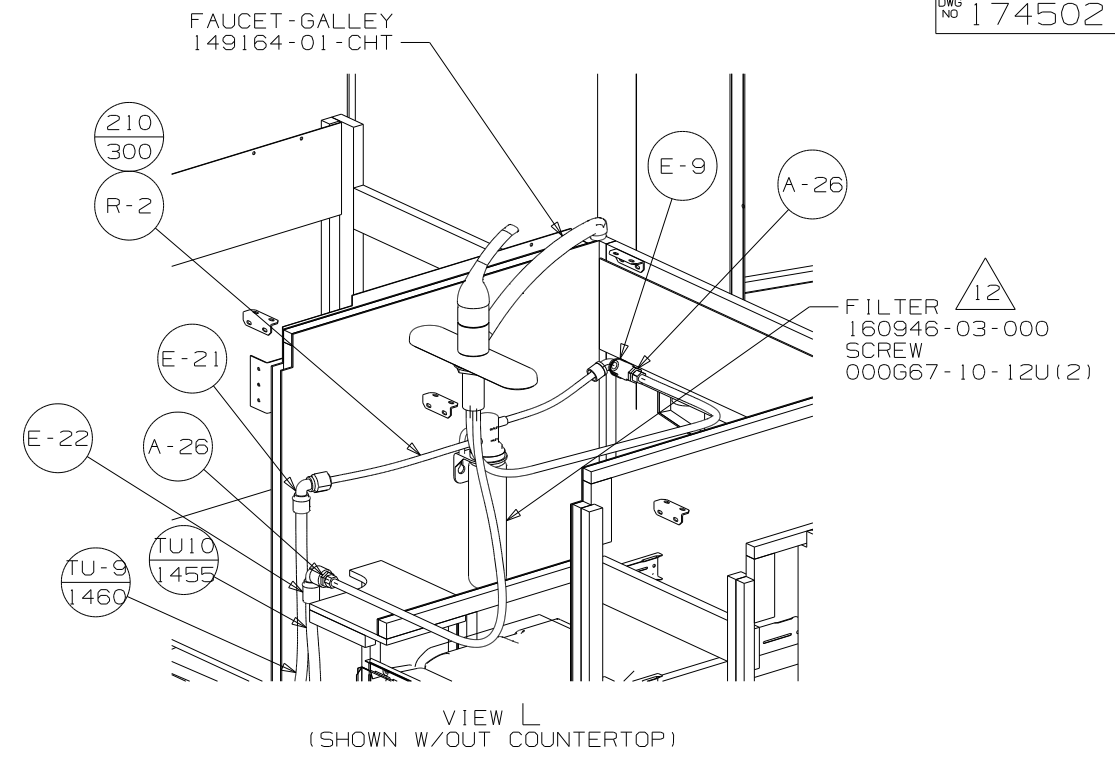
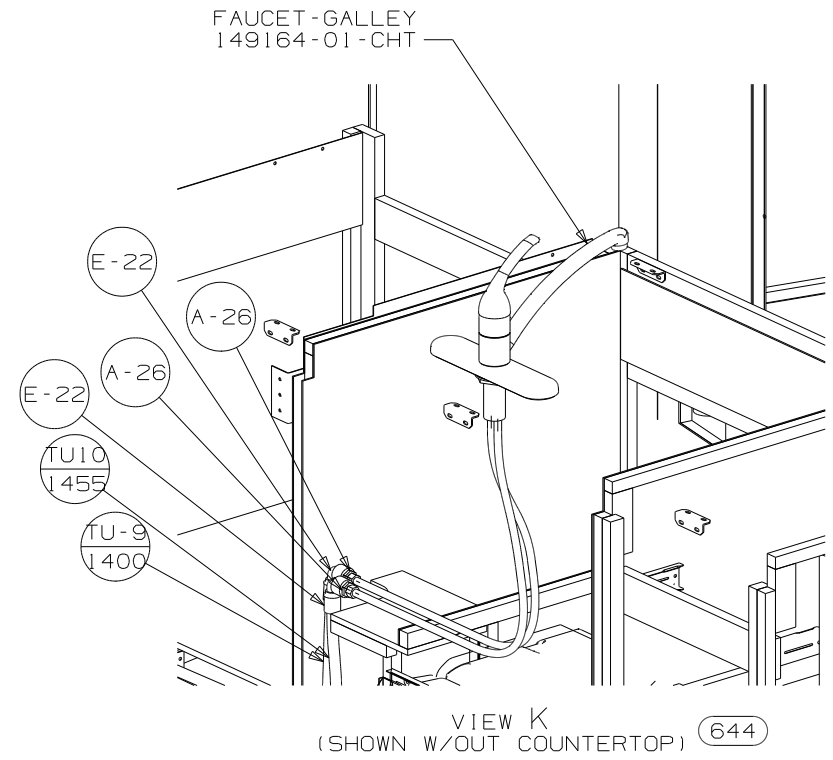
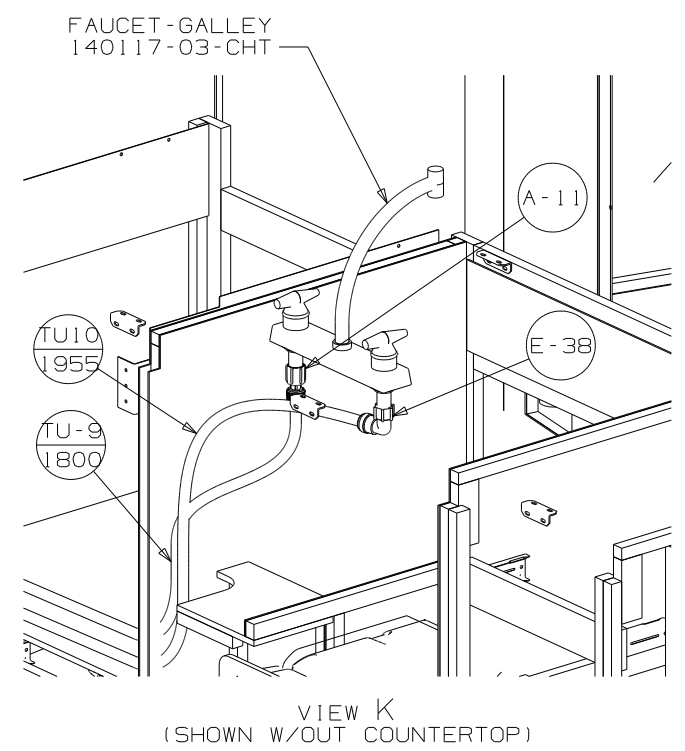


SECTION E-E
 53F



SECTION E-E
 53Z

FIRST USED	11 226Q/OP
TITLE:	DO NOT SCALE DRAWING
SHEET 3	PART NO 174502 REV
	1 3/29/2011



FIRST USED	11 2260/OP
TITLE	DO NOT SCALE DRAWING
SHEET	4
PART NO	174502
REV	