



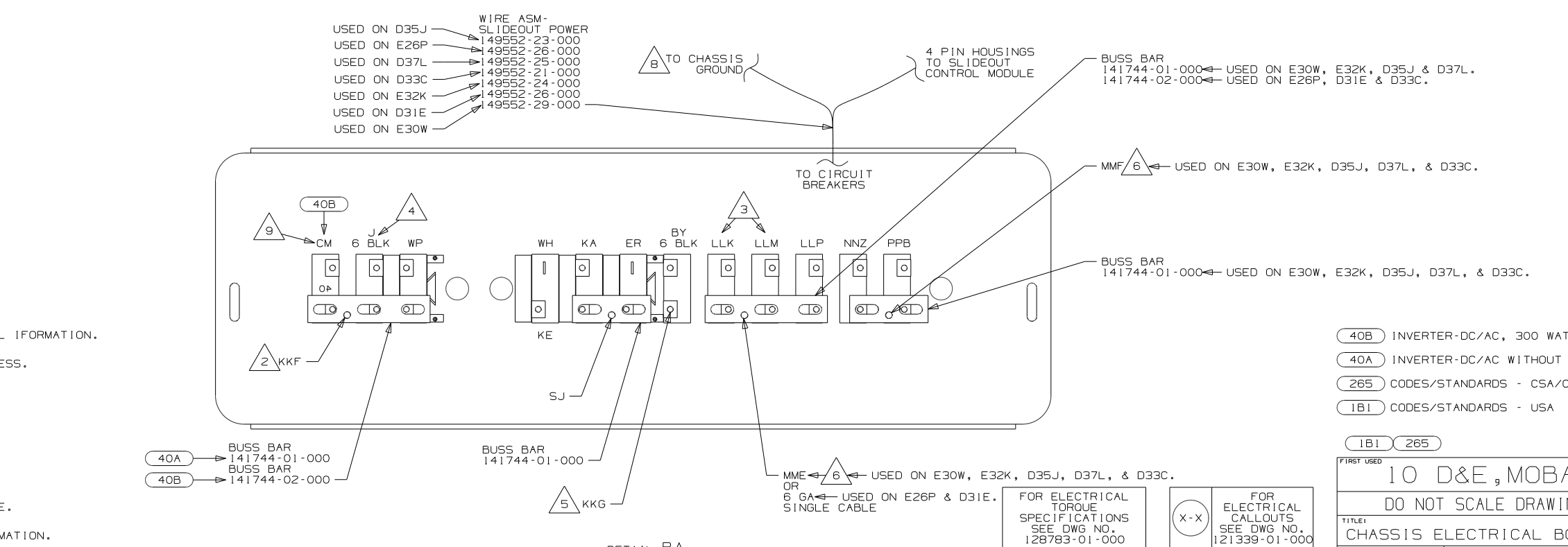
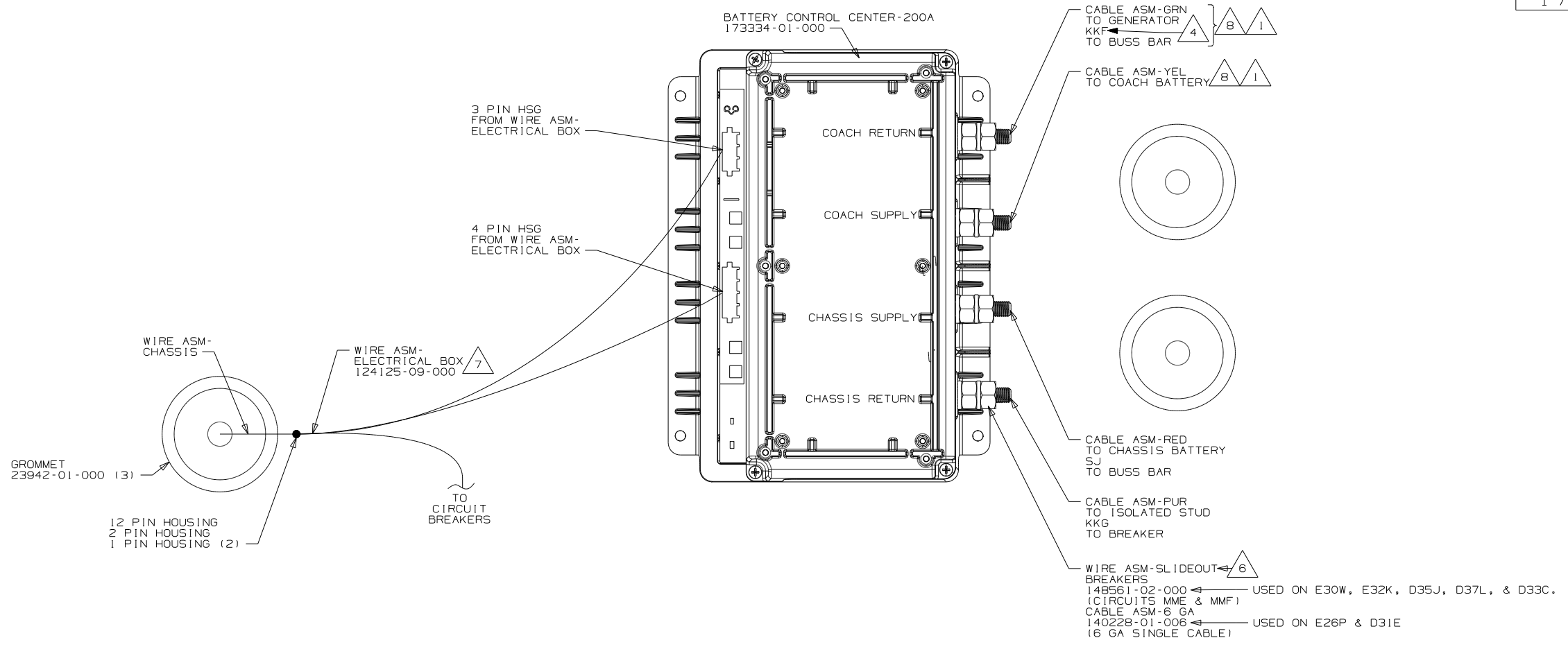
DANGER

Danger of electrical shock, burns or death. Always remove all power sources before attempting any repair, service or diagnostic work. Power can be present from shore power, generator, inverter or battery. All power sources must be disabled and secured before performing any service.



CAUTION

If you lack the skills, tools or equipment to perform diagnostic or repair work leave such work to an authorized Winnebago Industries dealer or other qualified shop.



- NOTES:
- 9 FROM WIRE ASM-CHASSIS.
 - 8 SEE WIRING INSTL-CHASSIS FOR ADDITIONAL INFORMATION.
 - 7 IF CIRCUIT NOT USED, TAPE BACK TO HARNESS.
 - 6 WIRE MARKED WITH RED TAPE.
 - 5 WIRE MARKED WITH PURPLE TAPE.
 - 4 WIRE MARKED WITH YELLOW TAPE.
 - 3 FROM WIRE ASM-CHASSIS ON D37L.
 - 2 WIRE MARKED WITH 2 WRAPS OF YELLOW TAPE.
 - 1 SEE BATTERY INSTL FOR ADDITIONAL INFORMATION.

- 40B INVERTER-DC/AC, 300 WATT
- 40A INVERTER-DC/AC WITHOUT
- 265 CODES/STANDARDS - CSA/CMVSS
- 1B1 CODES/STANDARDS - USA

FOR ELECTRICAL TORQUE SPECIFICATIONS SEE DWG NO. 128783-01-000

FOR ELECTRICAL CALLOUTS SEE DWG NO. 121339-01-000

FIRST USED	
10 D&E, MOBAC	
DO NOT SCALE DRAWING	
TITLE: CHASSIS ELECTRICAL BOX ASM	
SHEET 2	PART NO 173248 REV