



**DANGER**

**Danger of electrical shock, burns or death.** Always remove all power sources before attempting any repair, service or diagnostic work. Power can be present from shore power, generator, inverter or battery. All power sources must be disabled and secured before performing any service.



**CAUTION**

If you lack the skills, tools or equipment to perform diagnostic or repair work leave such work to an authorized Winnebago Industries dealer or other qualified shop.

DRAWING NO.	FEATURES	SHEETS
169929-01	(1PS) (1PV)	1, 2, 4
169929-02	(16L) (16Z)	1, 3, 4
169929-03	(1PS) (1PV)	1, 2, 5
169929-04	(16L) (16Z)	1, 3, 5

△  
2  
△  
2

RELEASE REV DATE A  
REV ZONE REVISION RECORD DATE DFR-ORIG  
DWG NO 169929

		J32H	J35Z	J37F	J38N	J35P	J33S	J38S
CABLE ASM-CHASSIS GND EXT (BLK)	(16Z) (16L)	133566-12-031	133566-12-019	133566-12-043	133566-12-047	133566-12-031	133566-12-019	133566-12-047
CABLE ASM-CHASSIS POWER EXT (RED)	(16Z) (16L)	141415-32-033	141415-32-020	141415-32-045	141415-32-049	141415-32-033	141415-32-020	141415-32-049
CABLE ASM-CHASSIS BATTERY DISCONNECT SUPPLY (RED)	(16Z) (16L)	141415-32-011	141415-32-010	141415-32-011	141415-32-010	141415-32-011	141415-32-010	141415-32-010
CABLE ASM-STARTER (RED)	(1PS) (1PV)	141415-35-038	141415-35-026	141415-35-050	141415-35-054	141415-35-038	141415-35-026	141415-35-054
CABLE ASM-COACH BATTERY (YEL)		141416-52-012	141416-52-008	141416-52-012	141416-52-008	141416-52-012	141416-52-008	141416-52-008
CABLE ASM-COACH BATTERY GND (BLK)		133567-12-006	133567-12-006	133567-12-006	133567-12-006	133567-12-006	133567-12-006	133567-12-006
CABLE ASM-CHASSIS BATTERY DISCONNECT RETURN (PUR)		141415-12-012	141415-12-006	141415-12-012	141415-12-006	141415-12-012	141415-12-006	141415-12-006
CABLE ASM-GENERATOR (GRN)	(321) (52P)	141415-42-065	141415-42-085	141415-42-075	141415-42-066	141415-42-075	141415-42-081	141415-42-066
WIRE ASM-INVERTER	(40D)	154845-01-012	154845-01-020	154845-01-012	154845-01-018	154845-01-012	N/A	N/A
LEVELING SYSTEM POWER CABLE (BLU)	(60M)	141415-22-049	141415-22-037	141415-22-061	141415-22-070	141415-22-049	141415-22-037	141415-22-070
LEVELING SYSTEM GND CABLE (BLK)	(60M)	133566-11-008	133566-11-008	133566-11-008	N/A	133566-11-008	133566-11-008	N/A
CHASSIS SUPPLIED POSITIVE CABLE CHASSIS BATTERY DISCONNECT SUPPLY (RED)	(1PS) (1PV)	1100	900	1100	900	1100	900	900

△  
1

△  
3

- (52P) GEN-5.5KW ONAN-GAS-MARO GOLD
- (321) GENERATOR PREP KIT
- (60M) HYDRAULIC LEVEL JACKS-AUTO
- (40D) INVERTER-DC/AC,600 WATT
- (1PV) WORKHORSE 24,000#-22.5 TIRE
- (1PS) WORKHORSE 22,000#-22.5 TIRE
- (16Z) FORD 24,000#-22.5 ALUM WHEEL
- (16L) FORD 22,000#-22.5 AL WHL
- (265) CODES/STANDARDS-CSA/CMVSS
- (1B1) CODES/STANDARDS USA

(1B1) (265)

**WINNEBAGO** INDUSTRIES, INC. COPYRIGHT 2009

DFTR	ORIG. DATE
CHKR	ALL DIMENSIONS ARE IN MILLIMETERS
P.E.	
M.E.	FIRST USED
DSNR	10 J-SERIES
UNSPECIFIED TOLERANCES ARE:	MATERIAL:
WHOLE DIM (X) : 3	
ONE-PLACE (X.X) : 1.5	
TWO-PLACE (X.XX) : 0.50	
ANGLE : 1°	
THIRD ANGLE PROJECTION	

DO NOT SCALE DRAWING

TITLE: BATTERY INSTL

SHEET 1 of 5 PART NO 169929 REV

REF: 1 8/25/2009

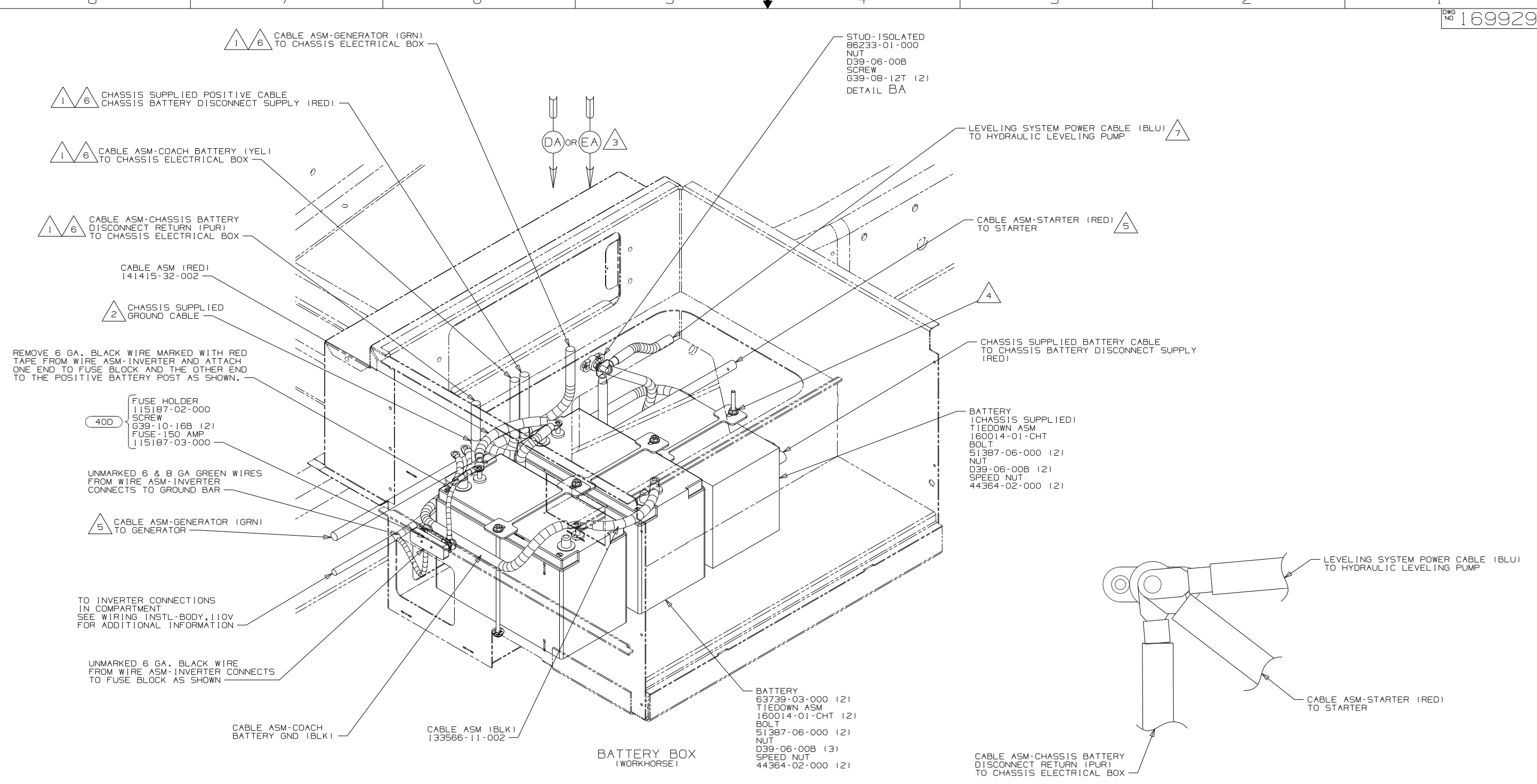
△  
3 LOCATE CHASSIS SUPPLIED POSITIVE CABLE. REDUCE LENGTH TO DIMENSIONS IN COLUMN AND ADD TERMINAL 68070-01-000 TO THE CUT END 1800MM CHASSIS SUPPLIED LENGTH.

△  
2 USED ON J32H, J35P, & J37F.

△  
1 BATTERY CABLES MUST BE INSTALLED TO STARTER MOTOR BEFORE ENGINE WIRING HARNESS AND ROUTED IN SUCH A MANNER AS TO PREVENT ANY POSSIBLE DEGRADATION FROM THE EXHAUST SYSTEM.

FOR ELECTRICAL TORQUE SPECIFICATIONS SEE DWG NO. 128783-01-000

FOR ELECTRICAL CALLOUTS SEE DWG NO. 121339-01-000



- 7 SEE LEVELING SYSTEM INSTL FOR ADDITIONAL INFORMATION.
- 6 SEE CHASSIS ELECTRICAL BOX ASM FOR ADDITIONAL INFORMATION.
- 5 SEE WIRING INSTL-CHASSIS FOR ADDITIONAL INFORMATION.
- 4 USE TWO NUTS HERE TO ACCOUNT FOR BATTERY HEIGHT DIFFERENCE.
- 3 USED ON J32H, J35P, & J37F.
- 2 LOCATE CHASSIS SUPPLIED CABLE REDUCE CABLE TO 700MM AND ADD TERMINAL 8348-01-000 TO THE CUT END.
- 1 CABLE WILL BE ROUTED TO THE RIGHT SIDE OF STEP BOX ON THE F32H. SEE SHT.5

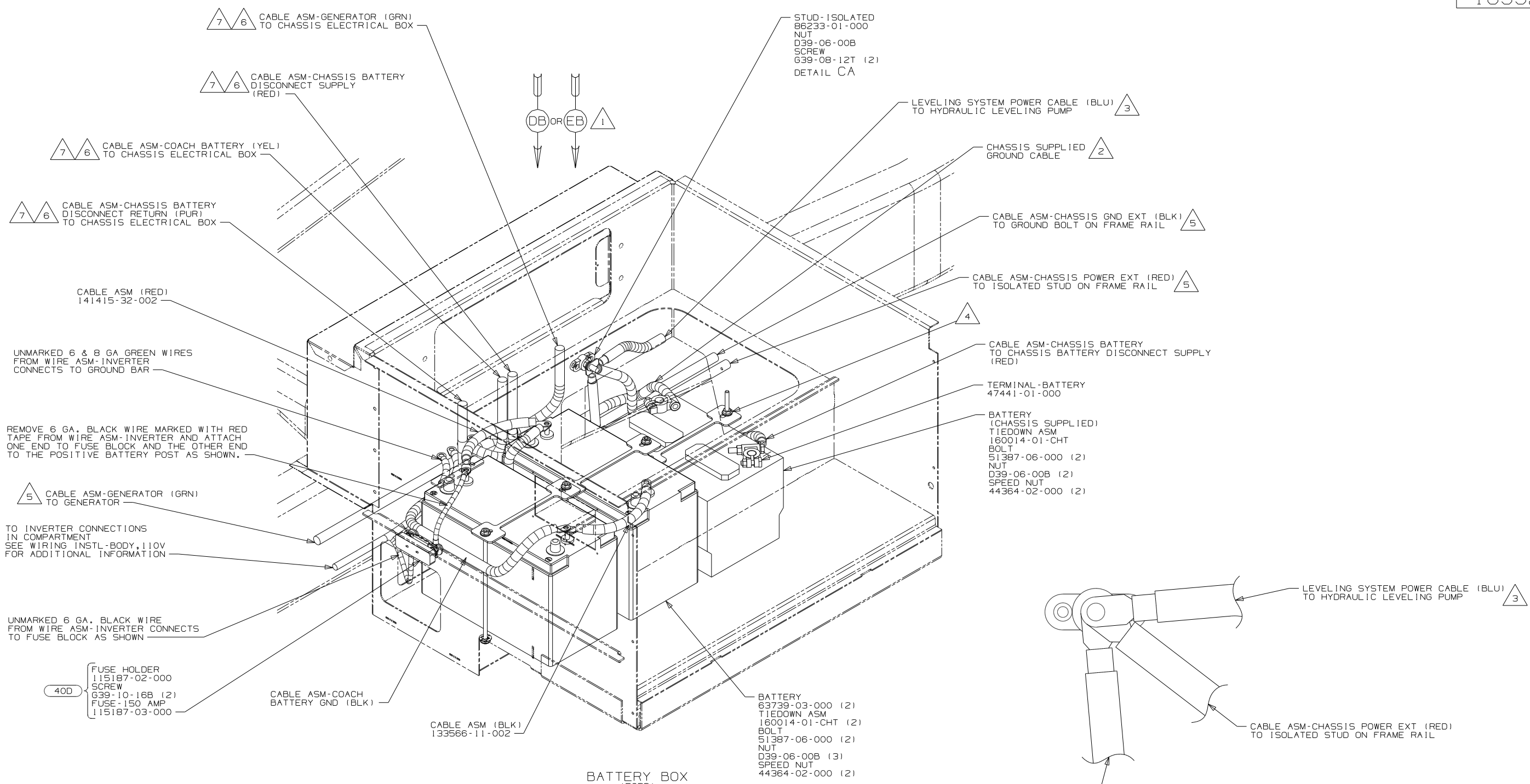
NOTES:

- 40D INVERTER-DC/AC, 600 WATT
- 265 CODES/STANDARDS-CSA/CMVSS
- 1B1 CODES/STANDARDS USA

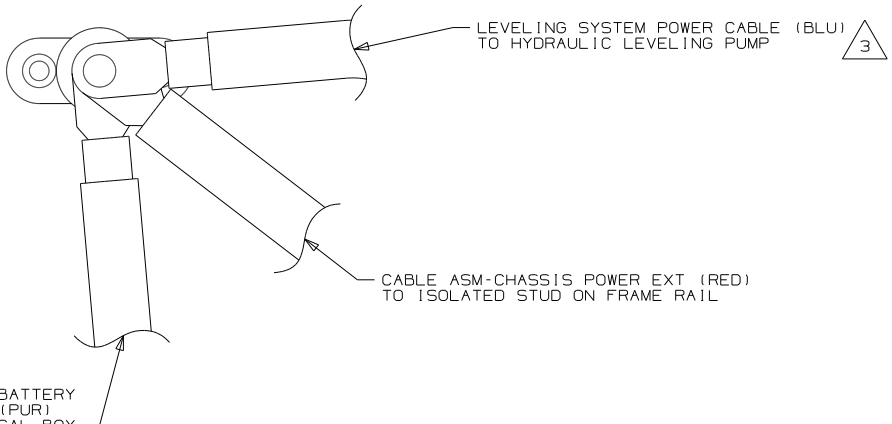
FIRST USED	
10 J-SERIES	
DO NOT SCALE DRAWING	
TITLE: BATTERY INSTL	
SHEET 2	PART NO 169929 REV

FOR ELECTRICAL TORQUE SPECIFICATIONS SEE DWG NO. 128783-01-000

X-X FOR ELECTRICAL CALLOUTS SEE DWG NO. 121339-01-000



BATTERY BOX (FORD)



DETAIL CA

- 7 CABLE WILL BE ROUTED TO THE RIGHT SIDE OF STEP BOX ON THE F32H. SEE SHT.5
- 6 SEE CHASSIS ELECTRICAL BOX ASM FOR ADDITIONAL INFORMATION.
- 5 SEE WIRING INSTL-CHASSIS FOR ADDITIONAL INFORMATION.
- 4 USE TWO NUTS HERE TO ACCOUNT FOR BATTERY HEIGHT DIFFERENCE.
- 3 SEE LEVELING SYSTEM INSTL FOR ADDITIONAL INFORMATION.
- 2 LOCATE CHASSIS SUPPLIED GROUND WIRES TO CABLE, AND REDUCE LENGTH TO 700MM AND ADD TERMINAL 8348-01-000 TO THE CUT END.
- 1 USED ON J32H, J35P, & J37F.

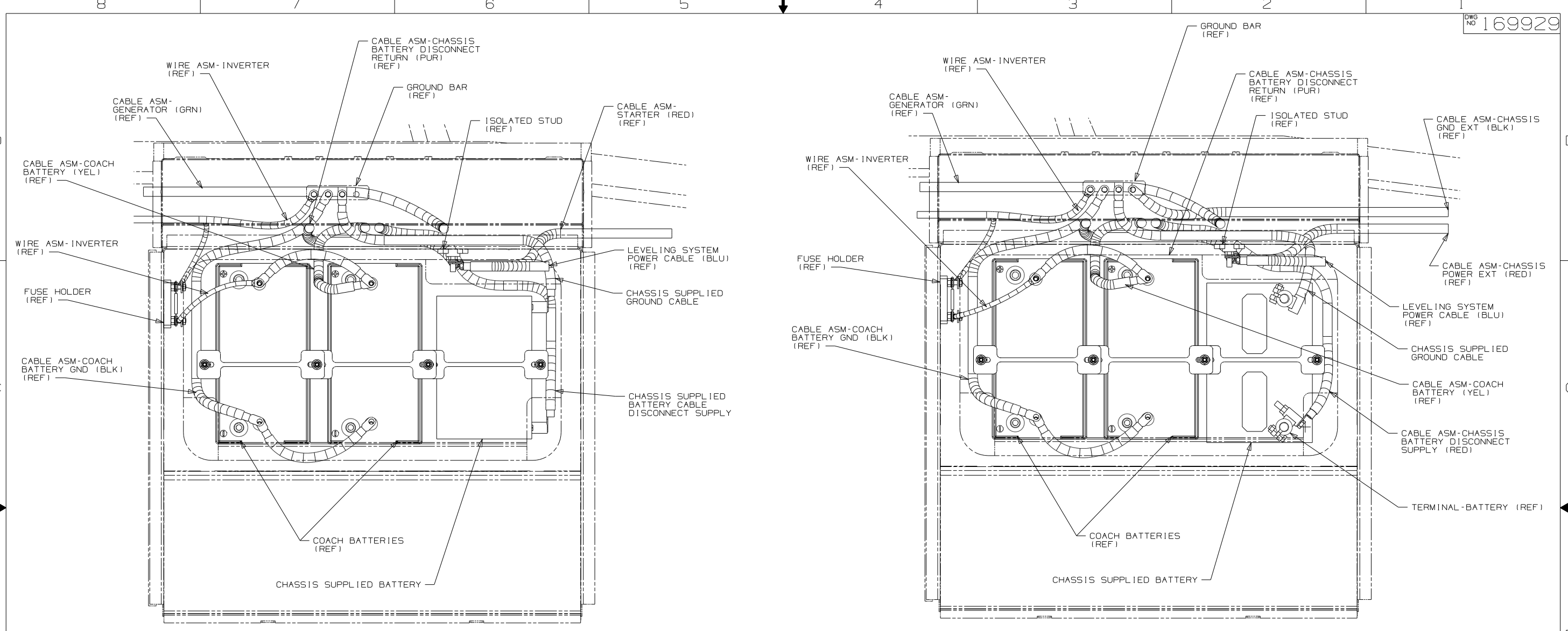
NOTES:

FOR ELECTRICAL TORQUE SPECIFICATIONS SEE DWG NO. 128783-01-000

FOR ELECTRICAL CALLOUTS SEE DWG NO. 121339-01-000

- 40D INVERTER-DC/AC, 600 WATT
- 265 CODES/STANDARDS-CSA/CMVSS
- 1B1 CODES/STANDARDS USA

FIRST USED	10 J-SERIES
TITLE:	DO NOT SCALE DRAWING
TITLE:	BATTERY INSTL
SHEET 3	PART NO 169929
	REV



VIEW DA  
(WORKHORSE)

VIEW DB  
(FORD)

265 CODES/STANDARDS - CSA/CMVSS

1B1 CODES/STANDARDS USA

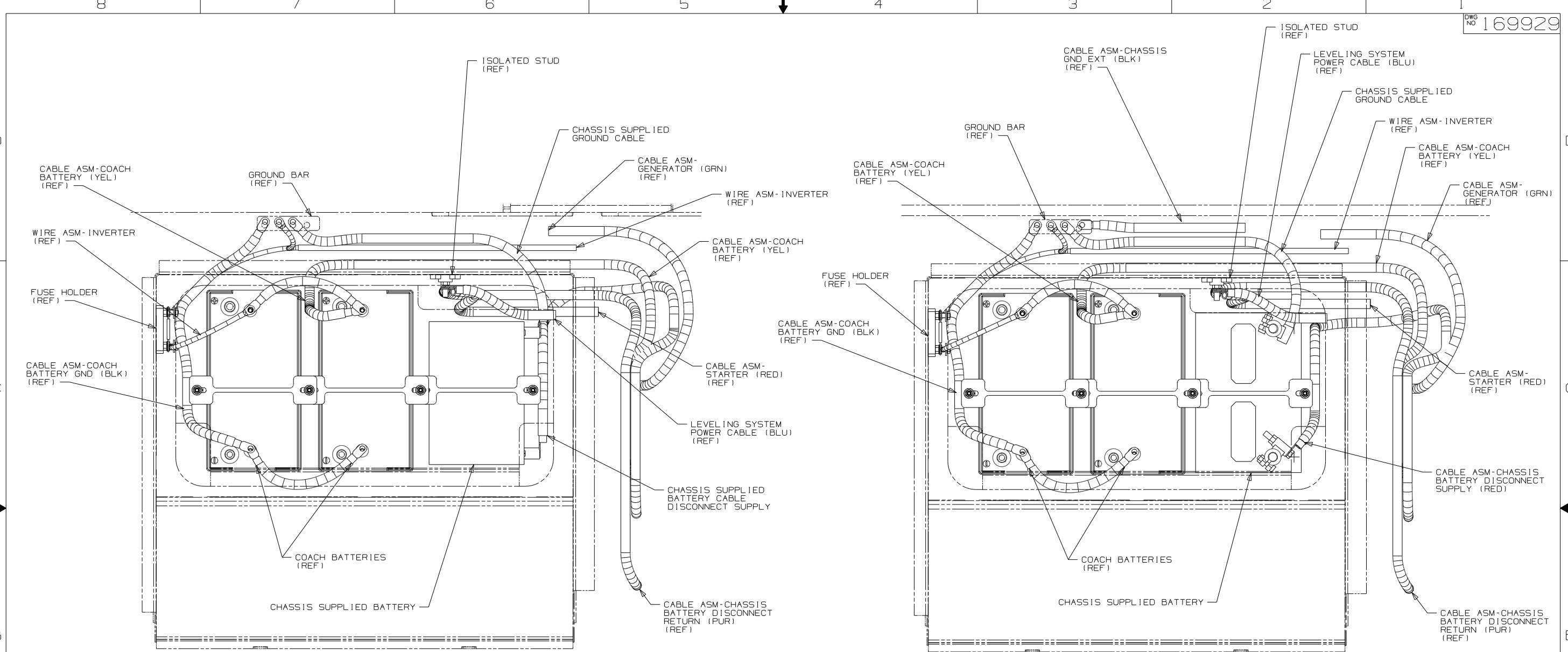
1B1 265

FIRST USED	10 J-SERIES
TITLE:	DO NOT SCALE DRAWING
	BATTERY INSTL
SHEET 4	PART NO 169929 REV

FOR ELECTRICAL TORQUE SPECIFICATIONS SEE DWG NO. 128783-01-000



FOR ELECTRICAL CALLOUTS SEE DWG NO. 121339-01-000



VIEW EA  
(WORKHORSE)

VIEW EB  
(FORD)

265 CODES/STANDARDS - CSA/CMVSS

1B1 CODES/STANDARDS USA

1B1 265

FIRST USED  
10 J-SERIES

DO NOT SCALE DRAWING

TITLE:  
BATTERY INSTL

SHEET 5 PART NO 169929 REV

FOR ELECTRICAL  
TORQUE  
SPECIFICATIONS  
SEE DWG NO.  
128783-01-000

X-X

FOR  
ELECTRICAL  
CALLOUTS  
SEE DWG NO.  
121339-01-000