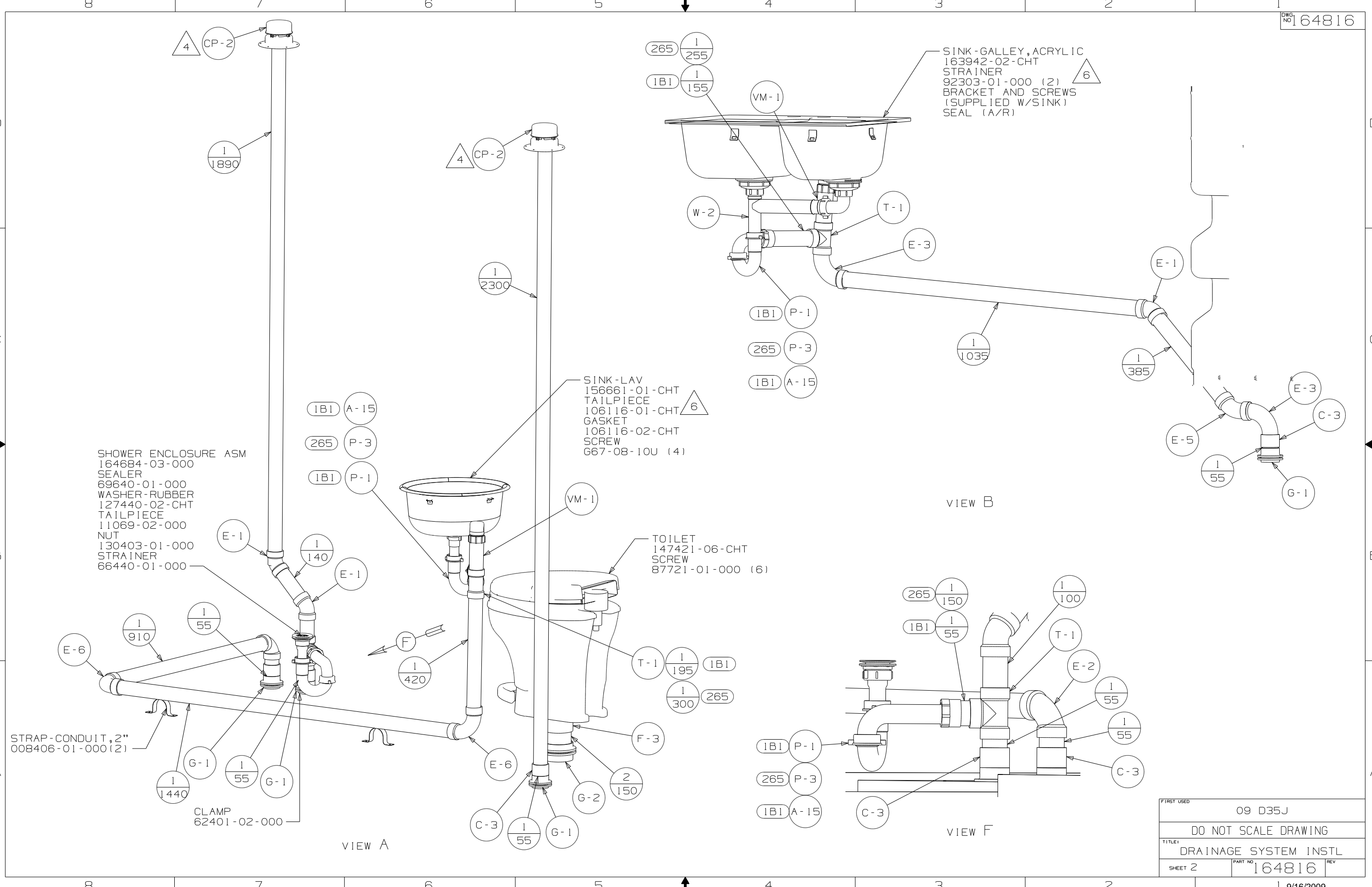


- NOTES:
6. USE SMOOTH PLUMBERS PUTTY 167459-01-000 TO SEAL STRAINER(.2 PER STRAINER)
  5. SEAL AROUND SHOWER WITH SILICONE.
  4. VENT PIPE MUST PROJECT 51 MIN AND 64 MAX ABOVE ROOF FOR PROPER FIT AND FUNCTION.
  3. ALL PIPE AND FITTINGS TO BE ASSEMBLED WITH SOLVENT 4020-01-000 (US) 4020-02-000 (CAN).
  2. SLOPE OF TRAP ARM MUST BE 6 PER 305 mm.
  1. SLOPE OF HORIZONTAL PIPING TO BE MIN 6 PER 305 mm.

(B1) CODES/STANDARDS-USA  
 (265) CODES/STDA-CSA/CMVSS

<b>WINNEBAGO</b>		COPYRIGHT 2009 WINNEBAGO INDUSTRIES, INC.	
DFT	ORIG. DATE	ALL DIMENSIONS ARE IN MILLIMETERS	
CHKR		MATERIAL:	
P.E.		WHOLE DIM (X)	: 3
M.E.		ONE-PLACE (X.X)	:
DSNR		TWO-PLACE (X.XX)	:
		ANGLE	:
		THIRD ANGLE PROJECTION	⊕
DO NOT SCALE DRAWING			
TITLE: DRAINAGE SYSTEM INSTL			
SHEET 1 OF 3	PART NO	164816	REV
REF:	1 9/16/2009		

(X-X)  
 FOR  
 DRAINAGE  
 CALLOUTS  
 SEE DWG NO  
 116229-01-000



SHOWER ENCLOSURE ASM  
 164684-03-000  
 SEALER  
 69640-01-000  
 WASHER-RUBBER  
 127440-02-CHT  
 TAILPIECE  
 11069-02-000  
 NUT  
 130403-01-000  
 STRAINER  
 66440-01-000

SINK-LAV  
 156661-01-CHT  
 TAILPIECE  
 106116-01-CHT  
 GASKET  
 106116-02-CHT  
 SCREW  
 667-08-10U (4)

SINK-GALLEY, ACRYLIC  
 163942-02-CHT  
 STRAINER  
 92303-01-000 (2)  
 BRACKET AND SCREWS  
 (SUPPLIED W/SINK)  
 SEAL (A/R)

TOILET  
 147421-06-CHT  
 SCREW  
 87721-01-000 (6)

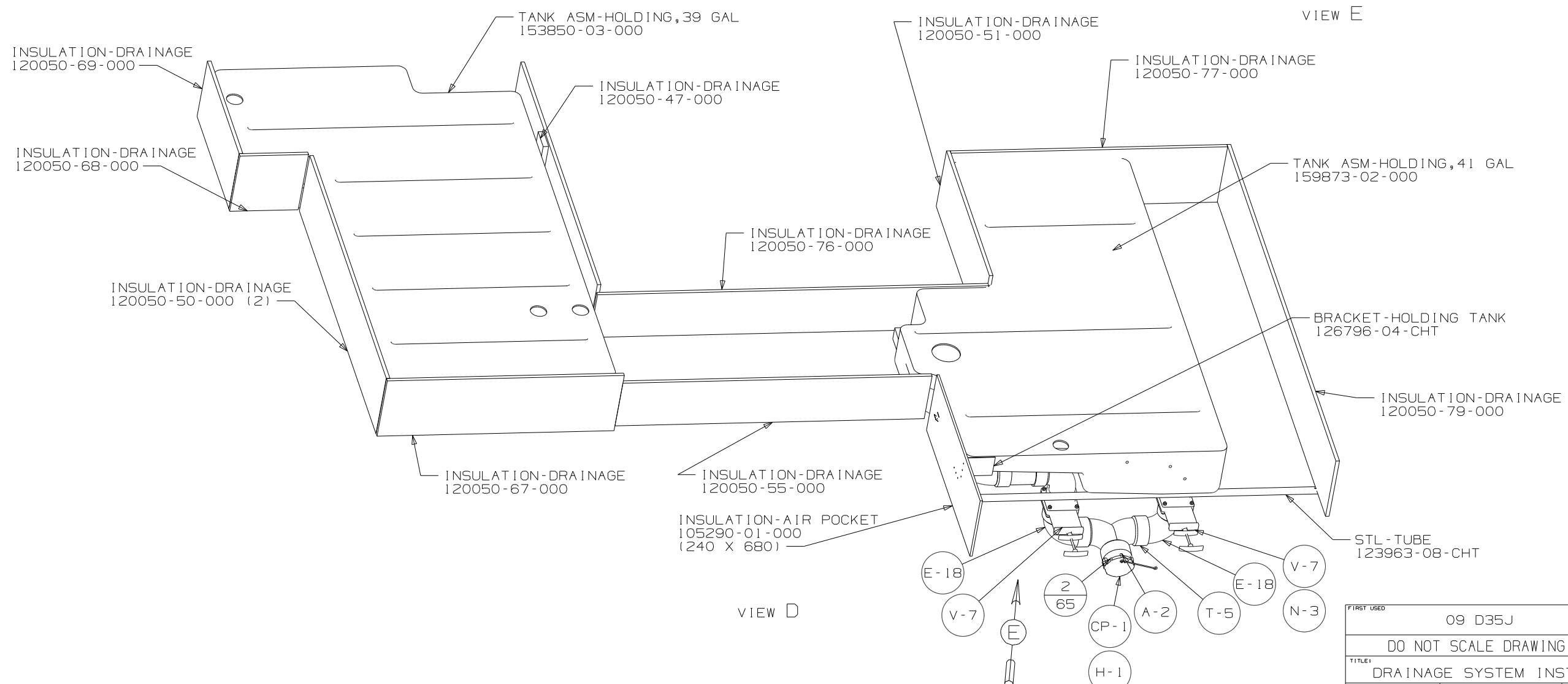
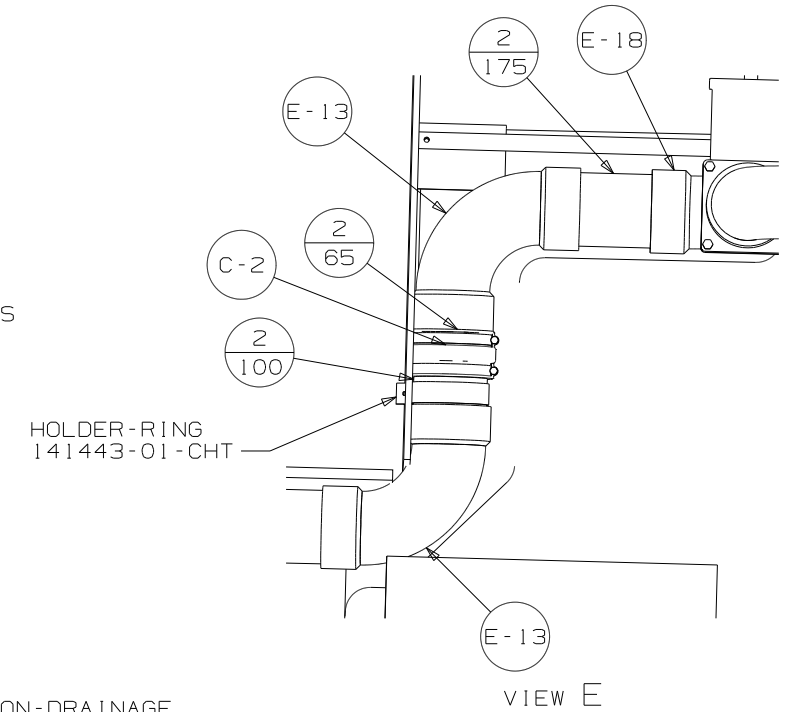
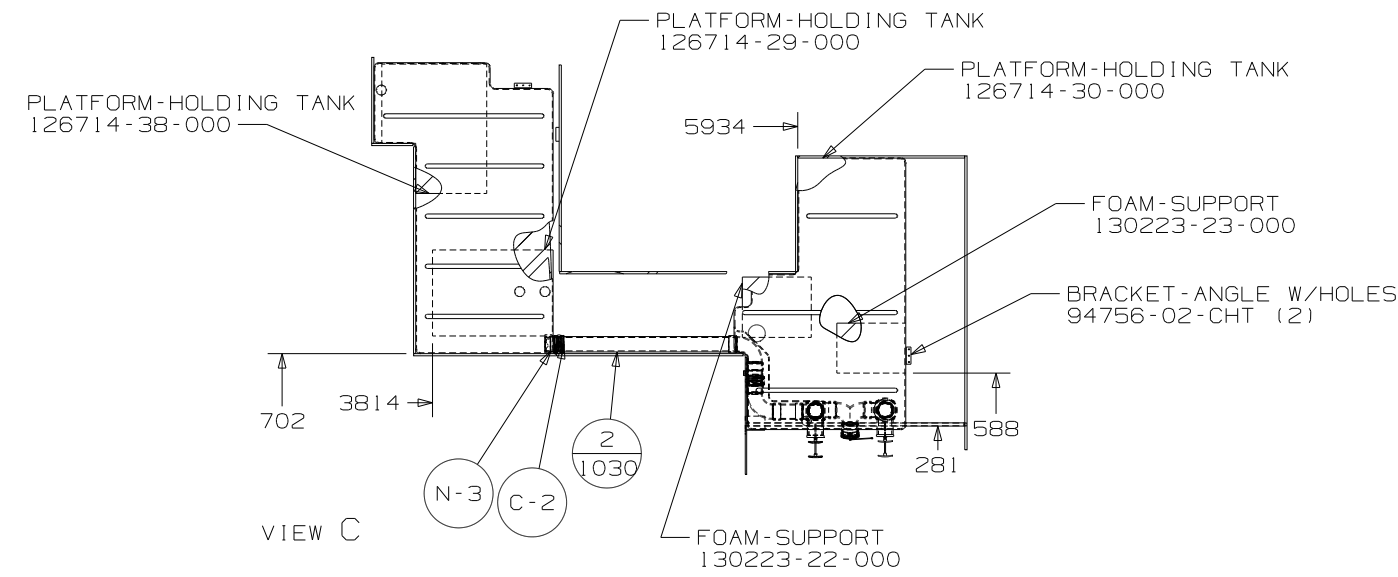
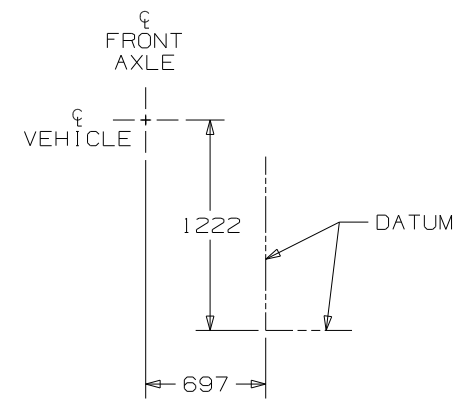
VIEW A

VIEW B

VIEW F

FIRST USED	09 D35J		
TITLE	DO NOT SCALE DRAWING		
	DRAINAGE SYSTEM INSTL		
SHEET 2	PART NO	164816	REV

8 7 6 5 4 3 2 1



FIRST USED	09 D35J		
TITLE	DO NOT SCALE DRAWING		
	DRAINAGE SYSTEM INSTL		
SHEET 3	PART NO	164816	REV

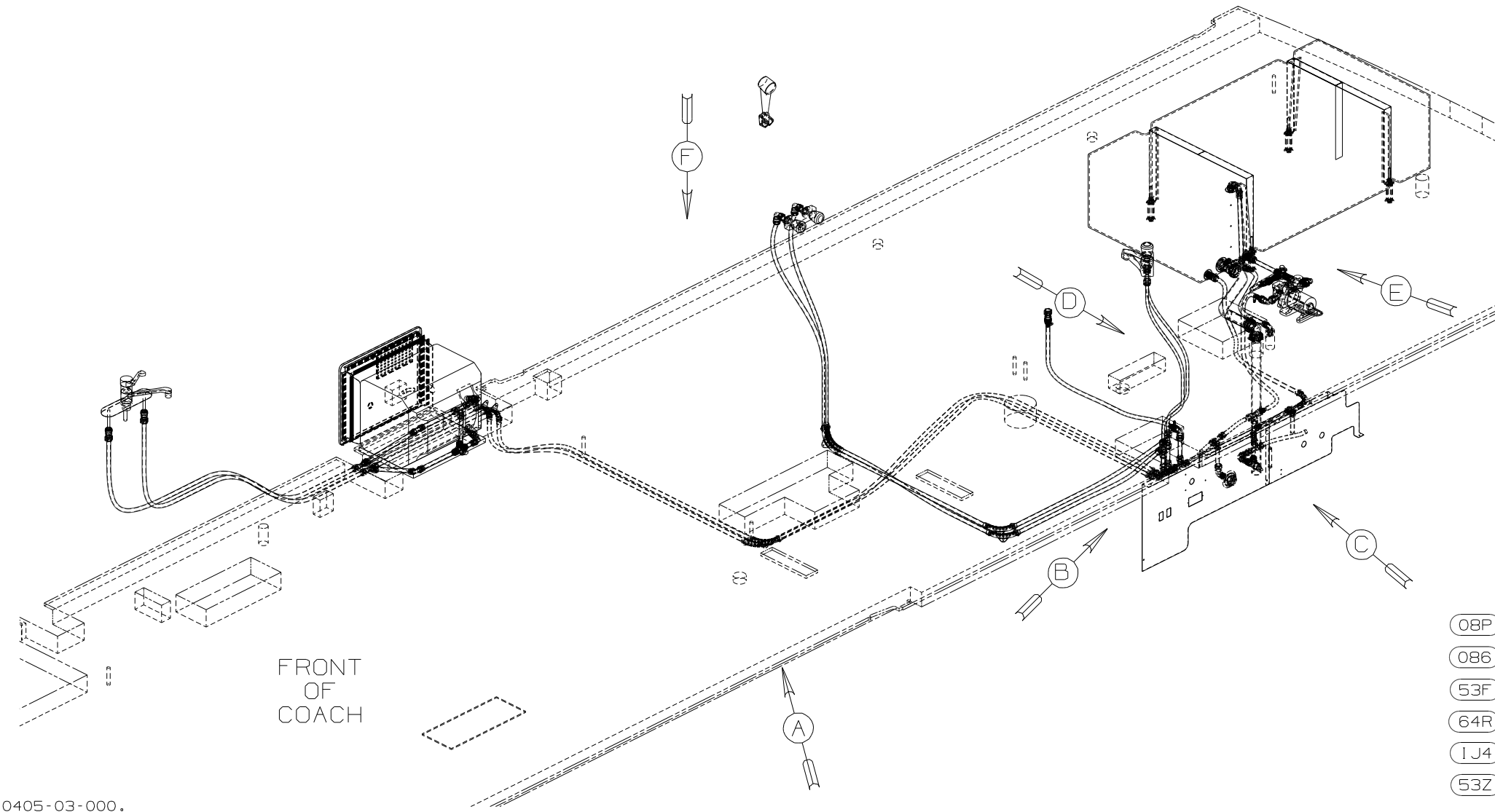
D  
C  
B  
A

D  
C  
B  
A

8 7 6 5 4 3 2 1

DWG NO	PANEL-SERVICE CENTER	FAUCET-LAV DUAL CONT
164815-01	154823-03-CHT	148886-01-CHT
164815-02	154823-06-CHT	148886-03-CHT

RELEASE	REV DATE	DWG NO
	A	164815
REV ZONE	REVISION RECORD	DATE
		DFTR-ORIG



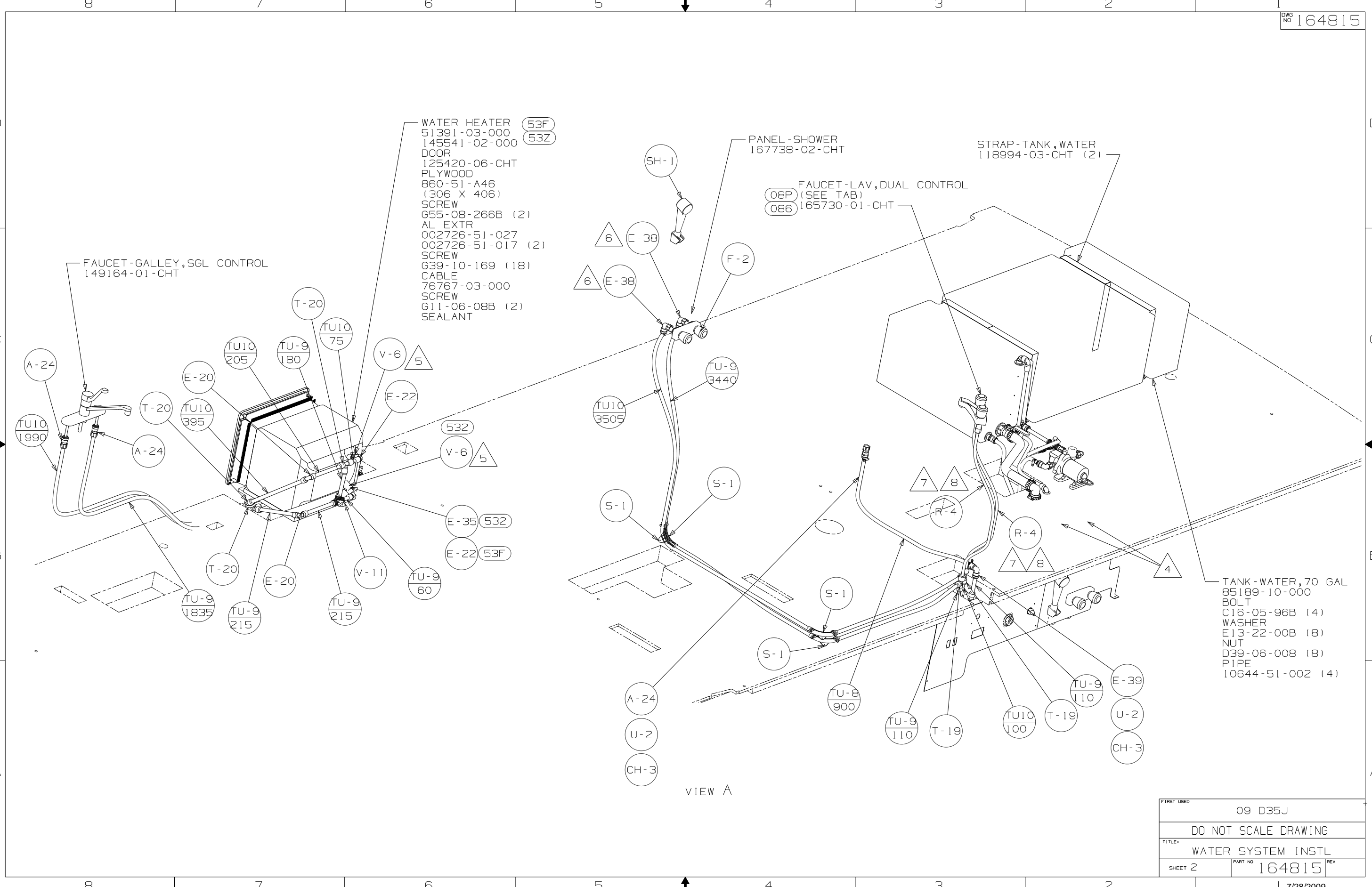
FRONT OF COACH

- (08P) INTERIOR UPGRADE - WITHOUT
- (086) INTERIOR UPGRADE PACKAGE
- (53F) WATER HEATER-ELEC IGNITION
- (64R) EXTERIOR WASH STATION
- (1J4) EXT WASH STATION-WITHOUT
- (53Z) WTR HTR-6GAL/110/LP/MTR/AUTO

- NOTES:
9. ADD TEFLON TAPE 10405-03-000.
  8. LABEL HOT AND COLD SUPPLY TUBES.
  7. TAPE FITTING TO TUBE BEFORE CABINET SET TO PREVENT FITTING FROM MOVING.
  6. ADD TEFLON TAPE 10405-01-000.
  5. ADD TEFLON TAPE 10405-02-000.
  4. ADD PIPE WRAP (LADDER SCRAP) INSULATION HERE.
3. ALL TUBING TO BE SECURED AT 1200 INTERVALS MAXIMUM WITH CLAMP 10495-01-000 AND SCREW G67-10-12B OR EQUIVALENT..
  2. TUBING TO BE INSTALLED WITH SUFFICIENT SLOPE TO PROVIDE DRAINAGE TO NEAREST VALVE.
  1. PLASTIC FITTINGS TO BE SEALED WITH SEALANT 84456-01-000.

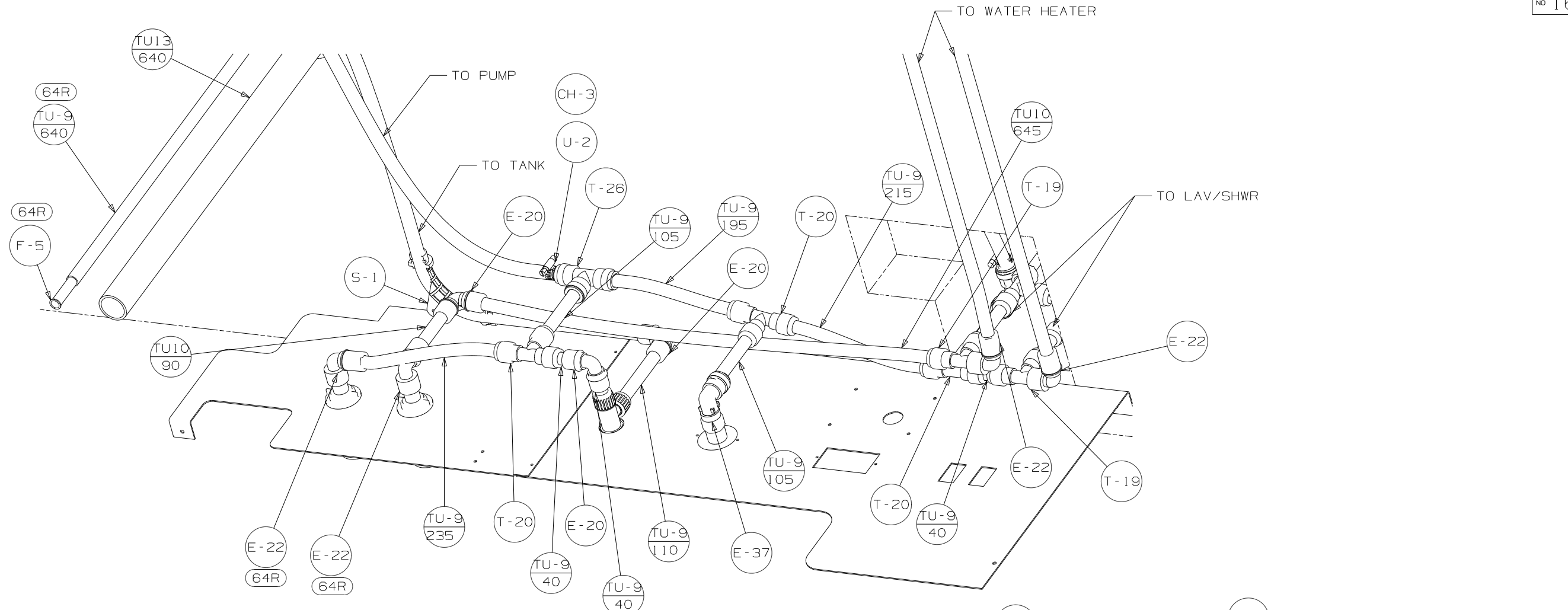
(X-X)  
FOR WATER CALLOUTS SEE DWG NO 116230-01-000

<b>WINNEBAGO</b>		COPYRIGHT 2009 WINNEBAGO INDUSTRIES, INC.	
DFTR	ORIG. DATE	ALL DIMENSIONS ARE IN MILLIMETERS	
CHKR		MATERIAL:	
P.E.		UNSPECIFIED TOLERANCES ARE:	
M.E.	FIRST USED	WHOLE DIM (X) :	3
DSNR	09 D35J	ONE-PLACE (X.X) :	
		TWO-PLACE (X.XX) :	
		ANGLE :	
		THIRD ANGLE PROJECTION	
DO NOT SCALE DRAWING			
TITLE: WATER SYSTEM INSTL			
SHEET 1 OF 4	PART NO	164815	REV
		DATE 7/28/2009	

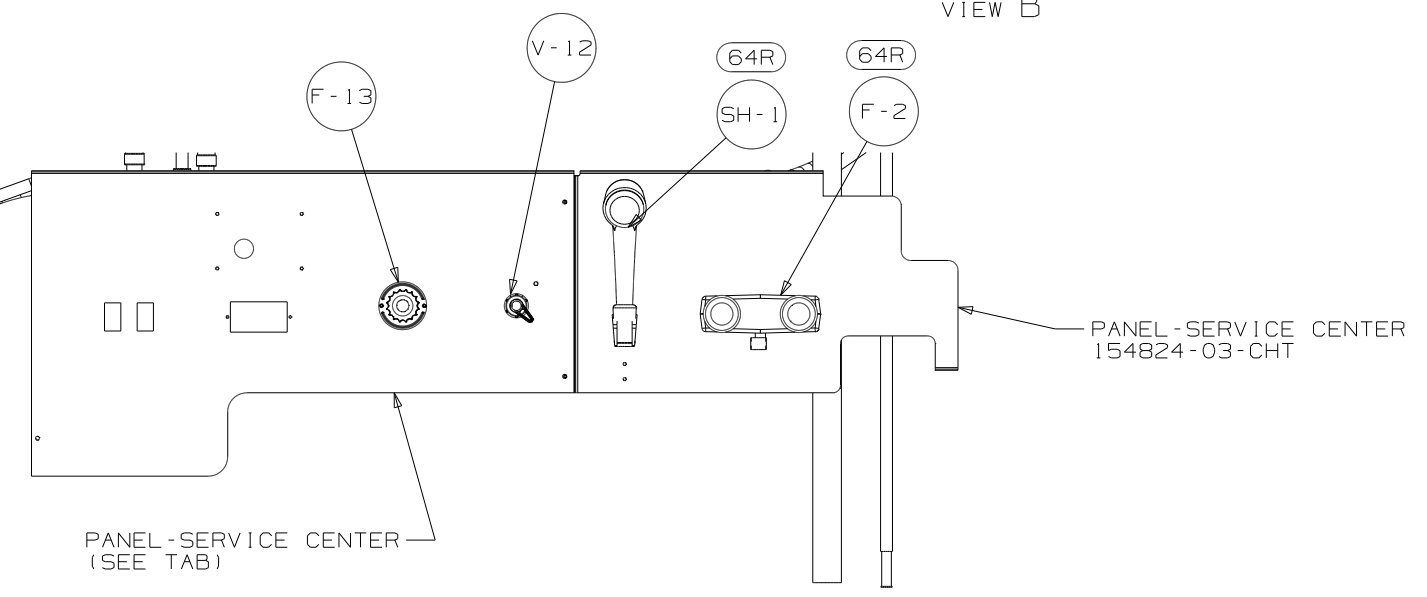


VIEW A

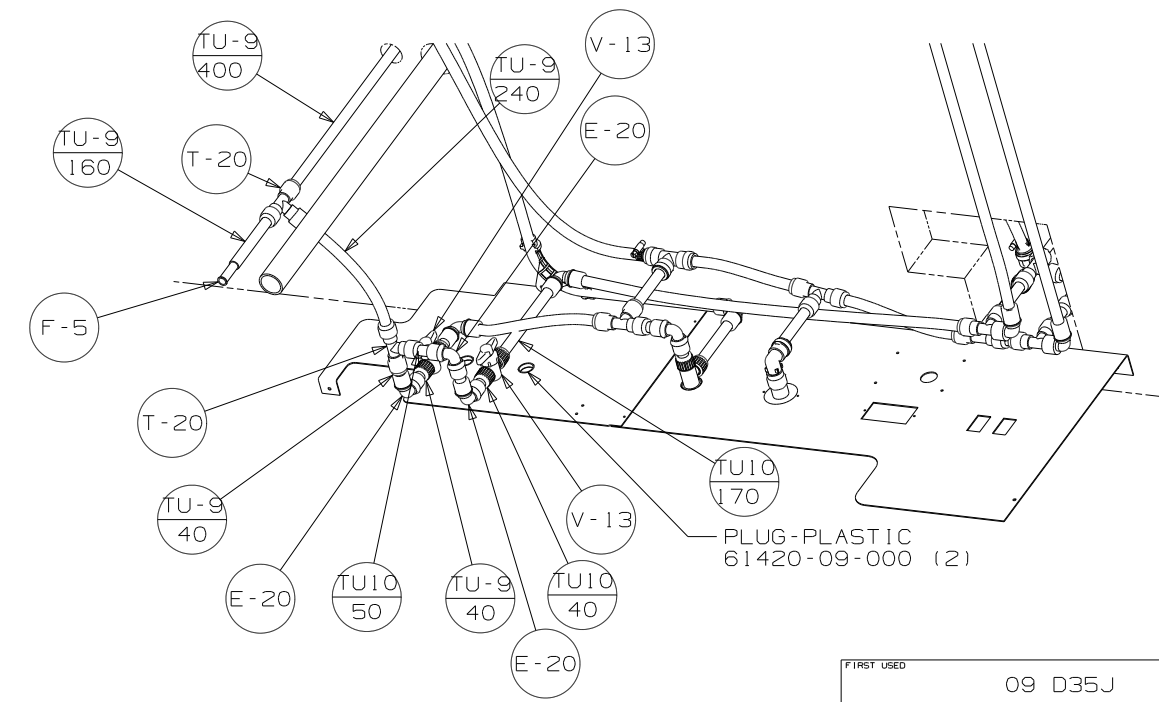
FIRST USED	09 D35J	
TITLE:	DO NOT SCALE DRAWING	
	WATER SYSTEM INSTL	
SHEET 2	PART NO	164815
	REV	



VIEW B

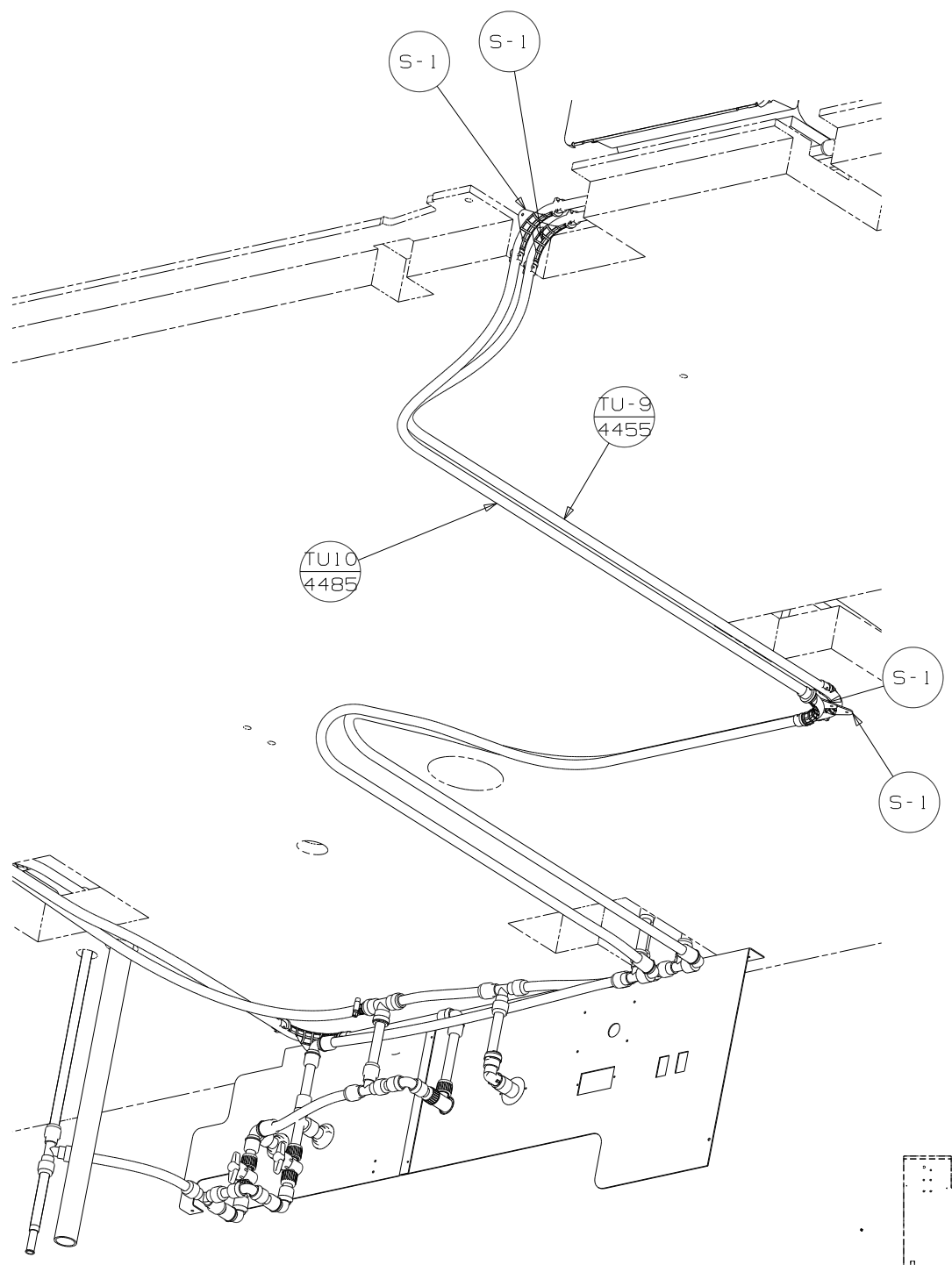


VIEW C



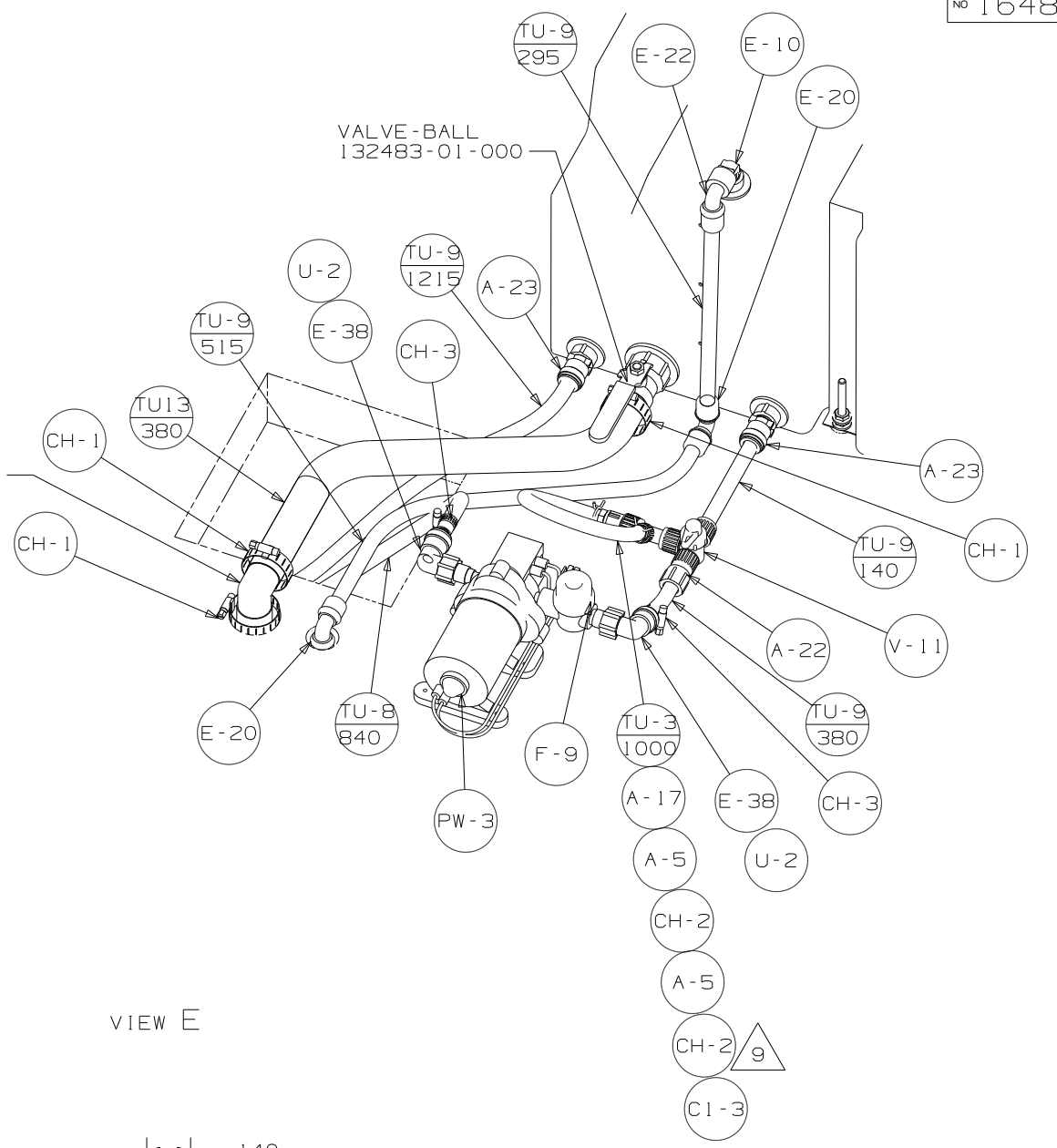
VIEW B  
1J4

FIRST USED	09 D35J
TITLE	DO NOT SCALE DRAWING
SHEET 3	164815
PART NO	164815
REV	1 7/28/2009

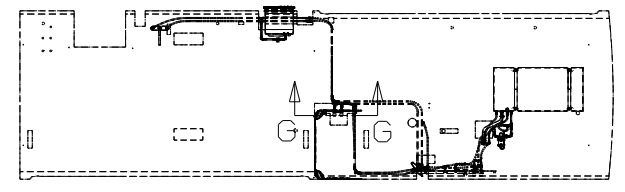


VIEW D

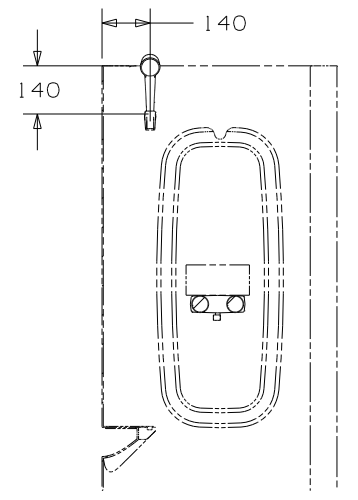
ELBOW  
132781-01-000



VIEW E



VIEW F



SECTION G-G

FIRST USED	09 D35J	
TITLE	DO NOT SCALE DRAWING	
SHEET 4	PART NO	164815
	REV	