

FRONT
OF
COACH +

- (23T) DRAINAGE SYSTEM-HEATED
- (23R) DRAINAGE SYSTEM/HEAT-PREWIRE
- (1B1) CODES/STANDARDS-USA
- (265) CODES/STANDARDS-CSA/CMVSS

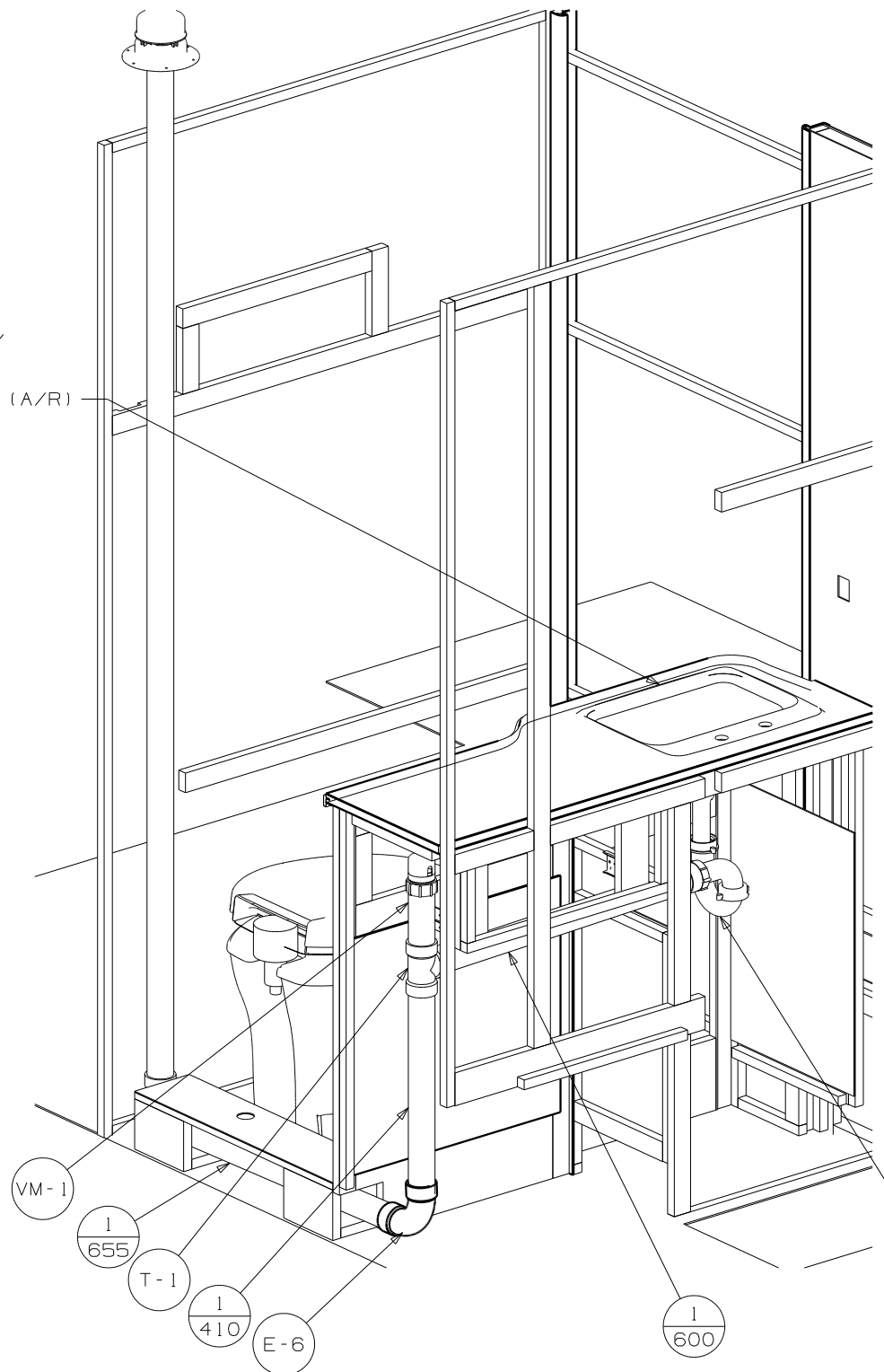
- NOTES:
7. SECURE VENT TUBES TO FLOOR WITH CLAMP 62401-02-000 (2), SCREW G67-10-12B (2), BRACKET 136878-01-CHT (2).
 6. VENT PIPE MUST PROJECT 51 MIN AND 64 MAX ABOVE ROOF FOR PROPER FIT AND FUNCTION.
 5. SEAL AROUND SHOWER WITH SILICONE.
 4. SEE WIRING INSTL-BODY, 12V FOR ELECTRICAL CONNECTION.
 3. ALL PIPE AND FITTINGS TO BE ASSEMBLED WITH SOLVENT 4020-01-000 (USA), 4020-02-000 (CAN)
 2. SLOPE OF TRAP ARM MUST BE 6 PER 305 mm.
 1. SLOPE OF HORIZONTAL PIPING TO BE MIN 3 PER 305 mm.

(X-X)
FOR
DRAINAGE
CALLOUTS
SEE DWG NO
116229-01-000

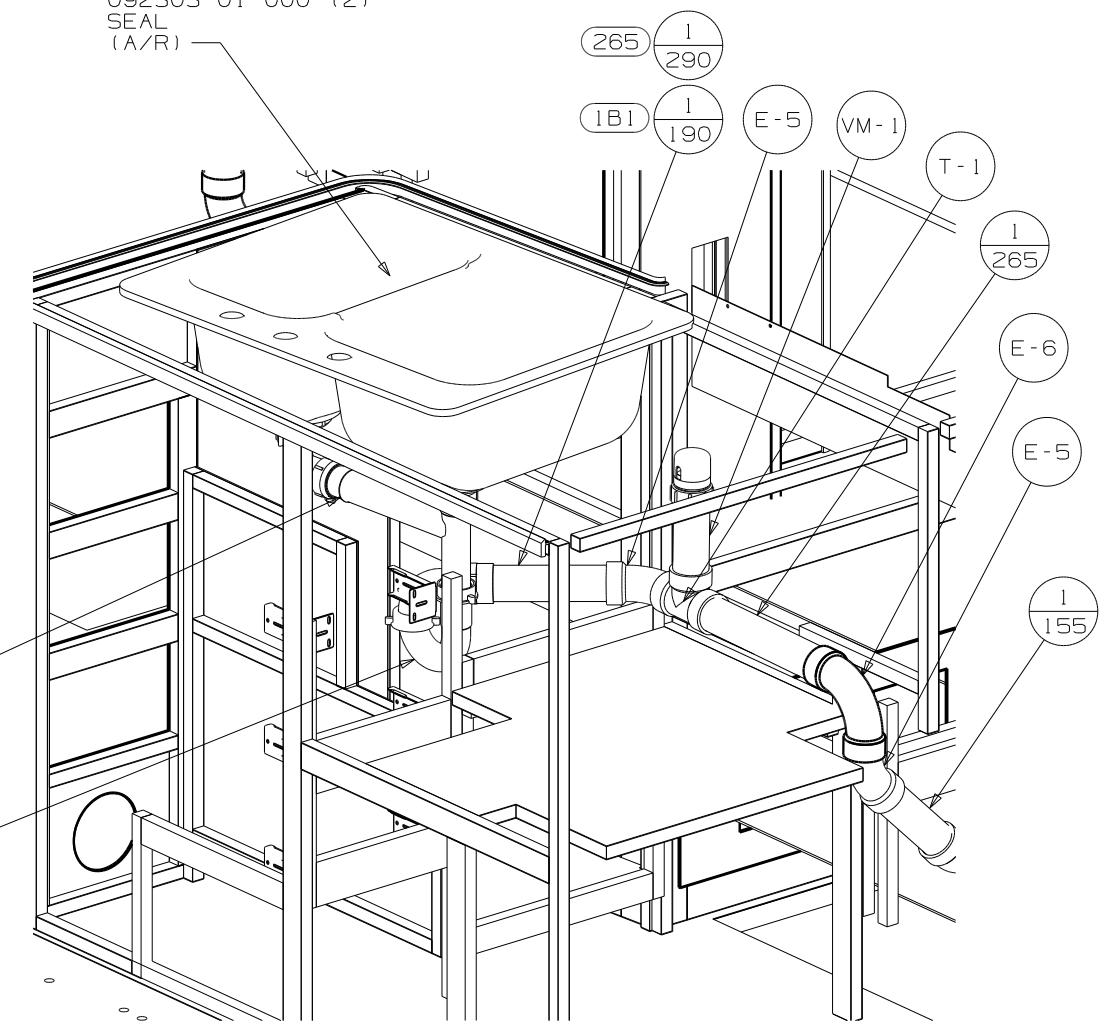
WINNEBAGO		COPYRIGHT 2010 WINNEBAGO INDUSTRIES, INC.	
DFTR	ORIG. DATE	ALL DIMENSIONS ARE IN MILLIMETERS	
CHKR		FIRST USED	
P.E.		10 229T	
M.E.		UNSPECIFIED TOLERANCES ARE:	
DSNR		WHOLE DIM (X) :	3
		ONE-PLACE (X.X) :	1.5
		TWO-PLACE (X.XX) :	0.50
		ANGLE :	1°
THIRD ANGLE PROJECTION		MATERIAL:	
DO NOT SCALE DRAWING		REFER TO ES0018 FOR FASTENER TIGHTENING GUIDELINES	
TITLE: DRAINAGE SYSTEM INSTL			
SHEET 1 OF 4	PART NO	171052	REV
REF:	1 2/22/2010		

SINK - LAVATORY
 96927-01-CHT
 SEAL
 91255-02-000 (A/R)

SINK - DBL, L/S BASIN
 163942-02-CHT
 STRAINER
 092303-01-000 (2)
 SEAL
 (A/R)



VIEW A

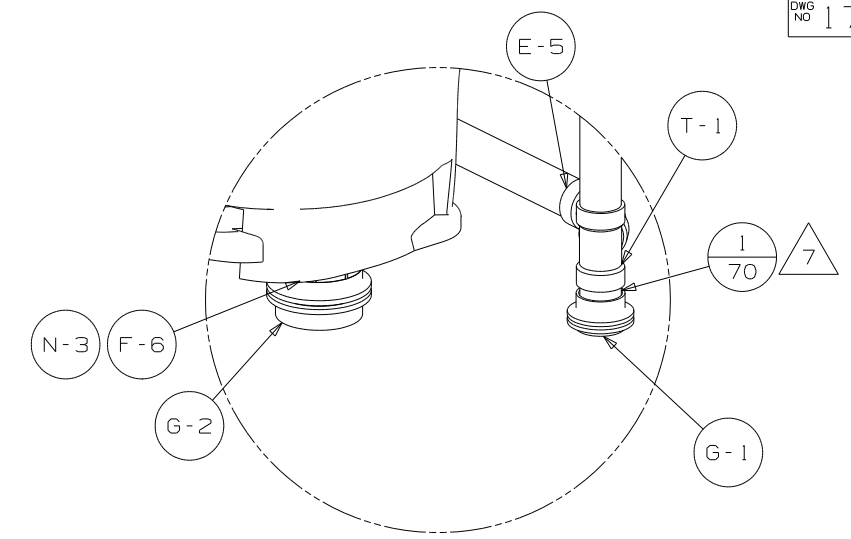
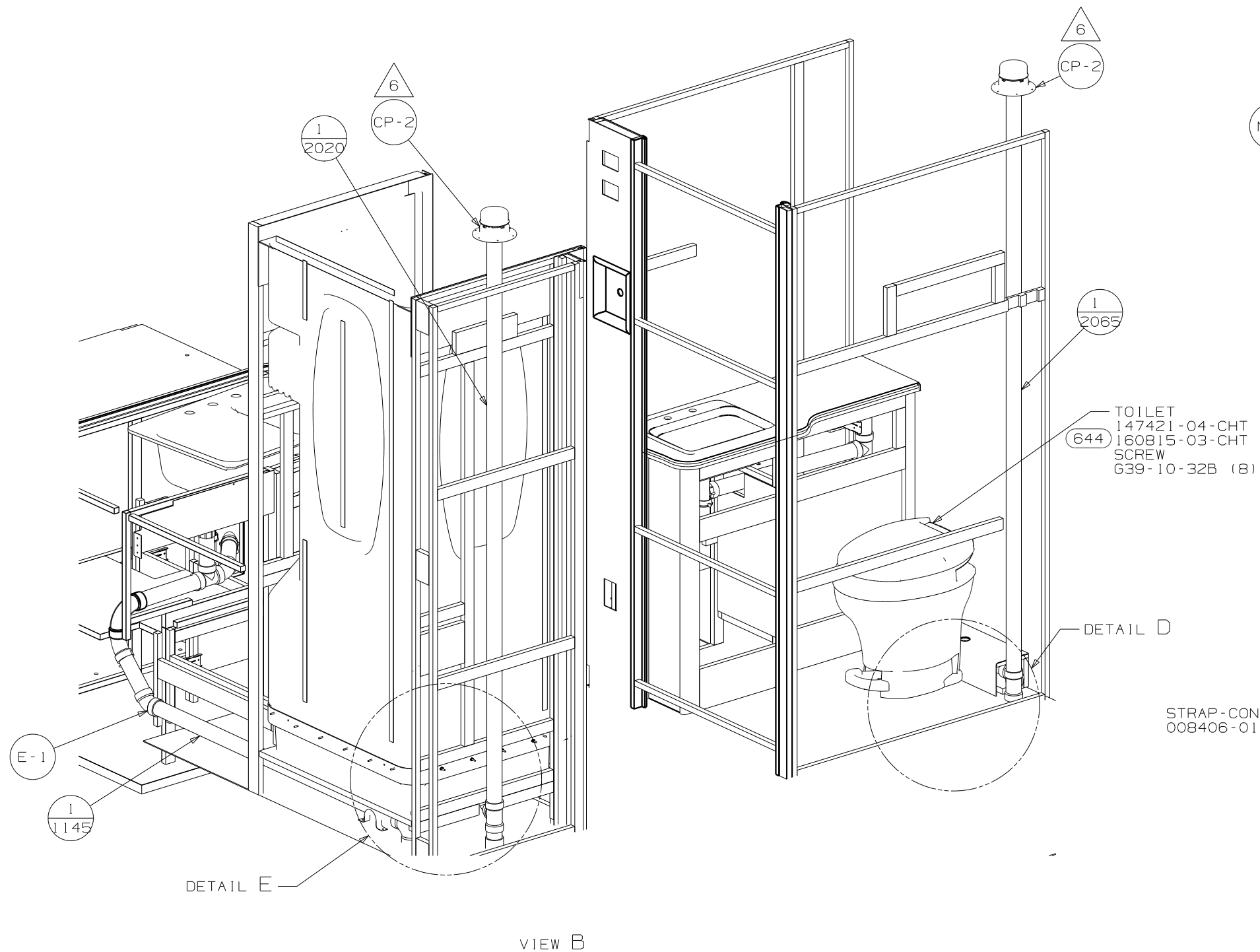


VIEW C

- P-1 (1B1)
- P-3 (265)
- A-15 (1B1)

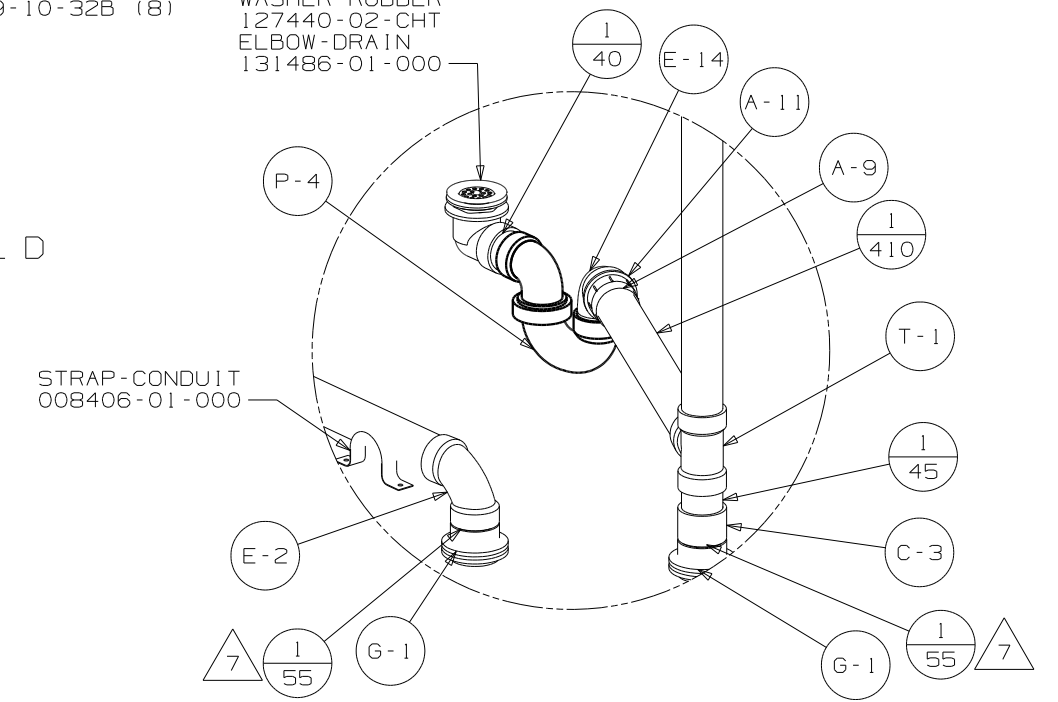
- (1B1) P-1
- (265) P-3
- (1B1) A-15

FIRST USED	10 229T
DO NOT SCALE DRAWING	
TITLE	DRAINAGE SYSTEM INSTL
SHEET 2	PART NO 171052 REV



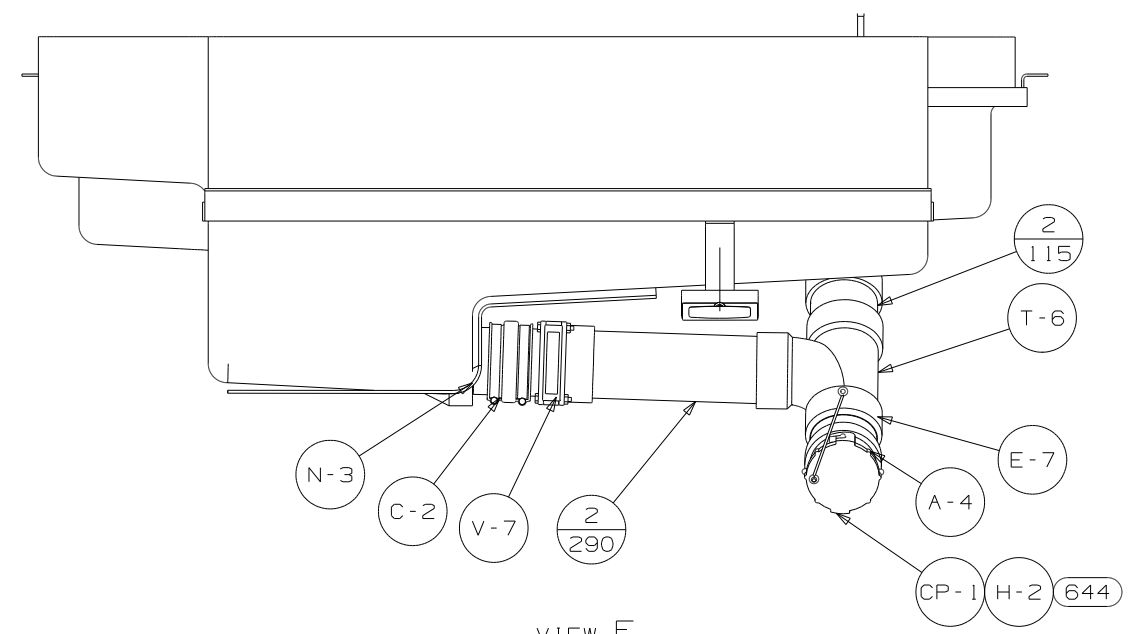
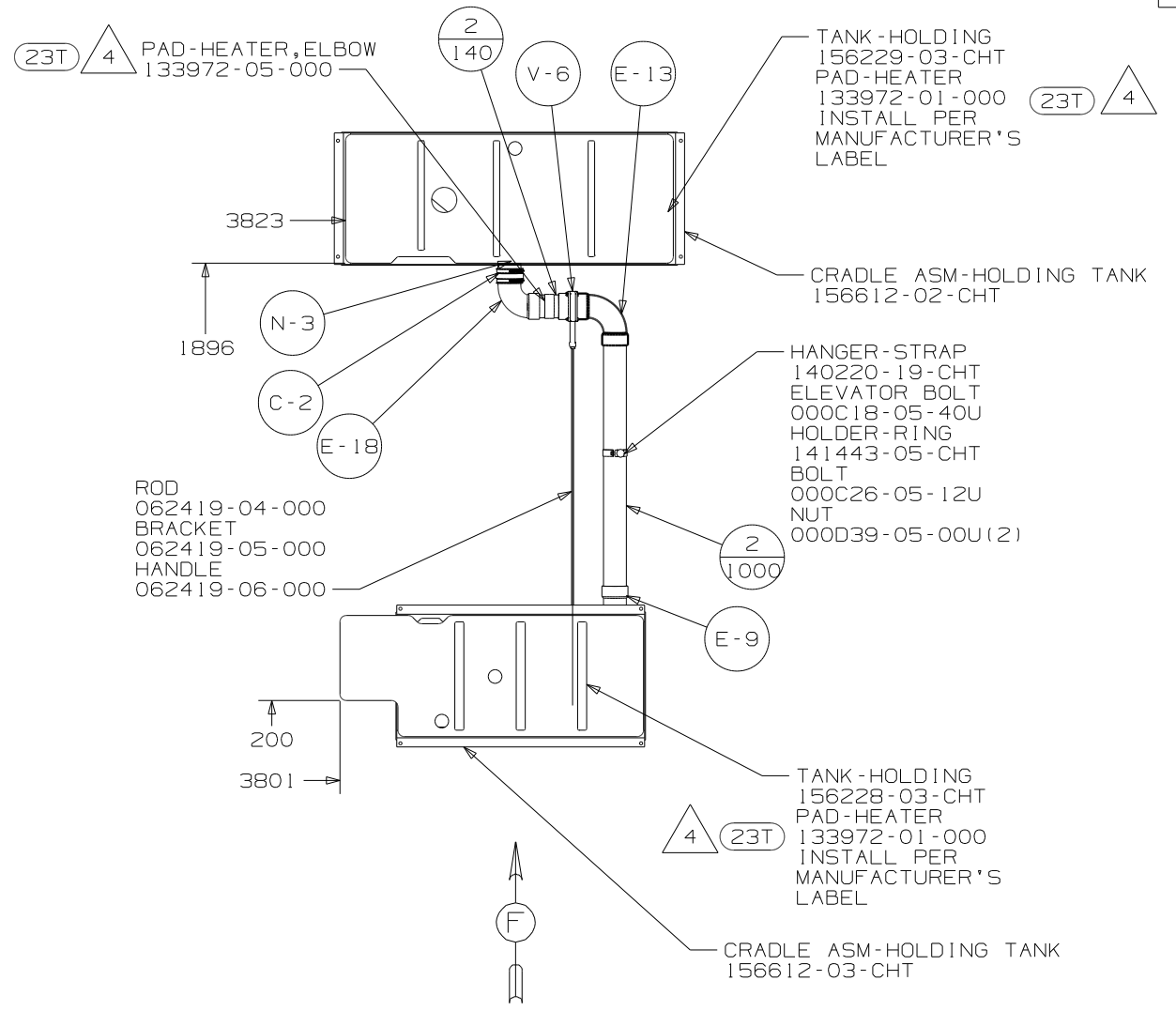
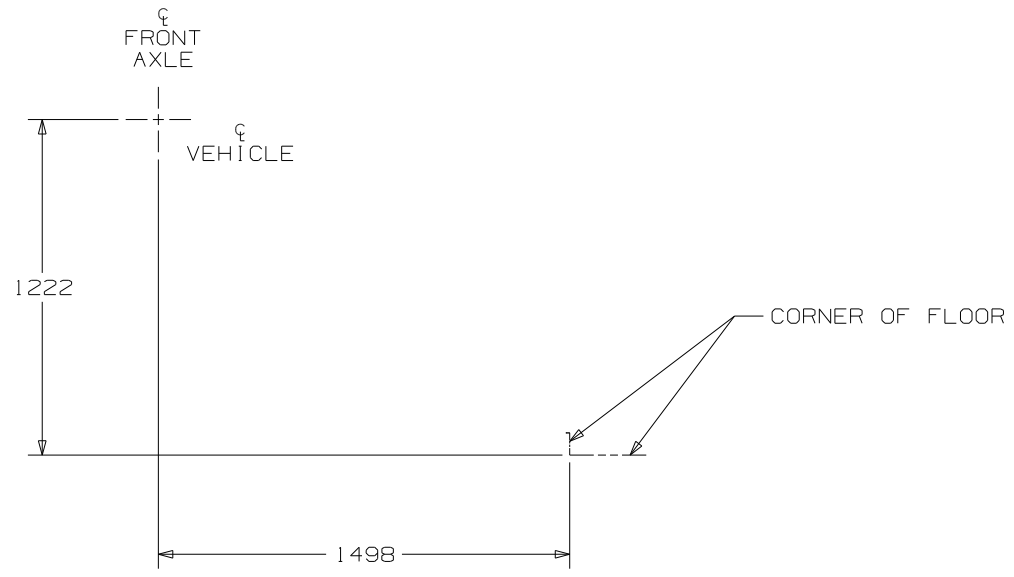
DETAIL D
(SHOWN W/OUT CABINETS & FLOOR)

- SHOWER INSTL-ENCLOSURE
147936-03-000
STRAINER
066440-01-000
SEALER
069640-01-000
WASHER-RUBBER
127440-02-CHT
ELBOW-DRAIN
131486-01-000

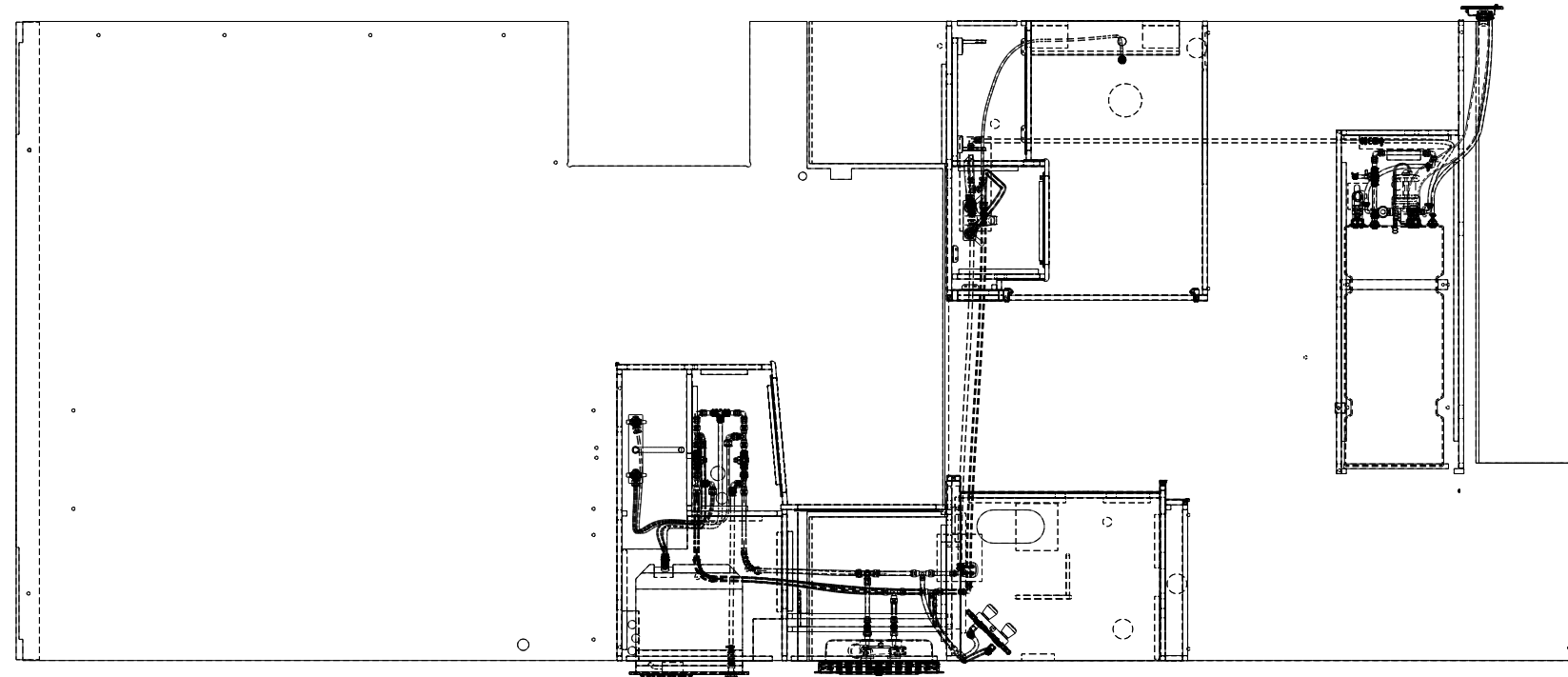


DETAIL E
(SHOWN W/OUT CABINETS & FLOOR)

FIRST USED	10 229T
DO NOT SCALE DRAWING	
TITLE	DRAINAGE SYSTEM INSTL
SHEET 3	PART NO 171052 REV



FIRST USED	10 229T
DO NOT SCALE DRAWING	
TITLE	DRAINAGE SYSTEM INSTL
SHEET 4	PART NO 171052 REV



- (64R) EXTERIOR WASH STATION
- (644) GREAT ALASKAN RENTAL PACKAGE
- (53F) WATER HEATER-ELEC. IGNITION
- (53B) WTR HTR-6GAL ELECTRIC/LP GAS
- (265) CODES/STANDARDS-CSA/CMVSS
- (23T) DRAINAGE SYSTEM-HEATED
- (1B1) CODES/STANDARDS USA

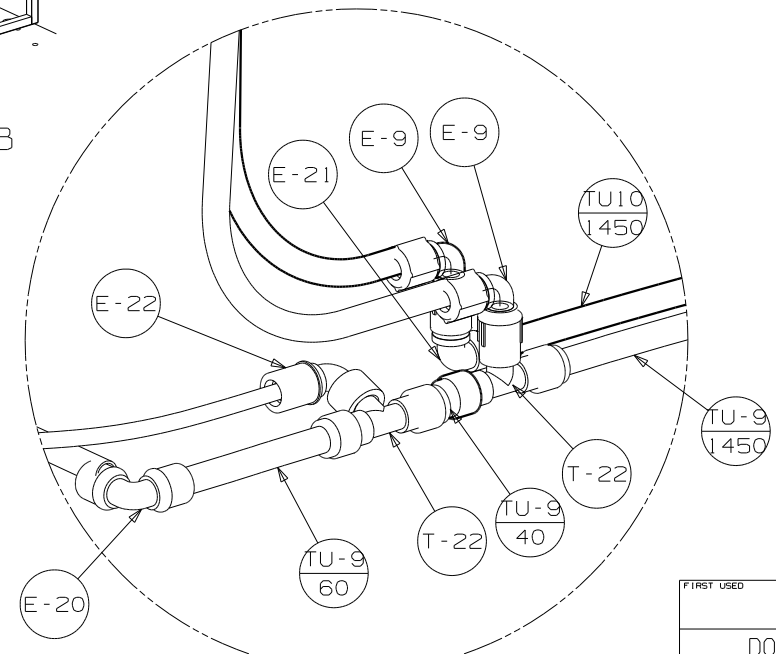
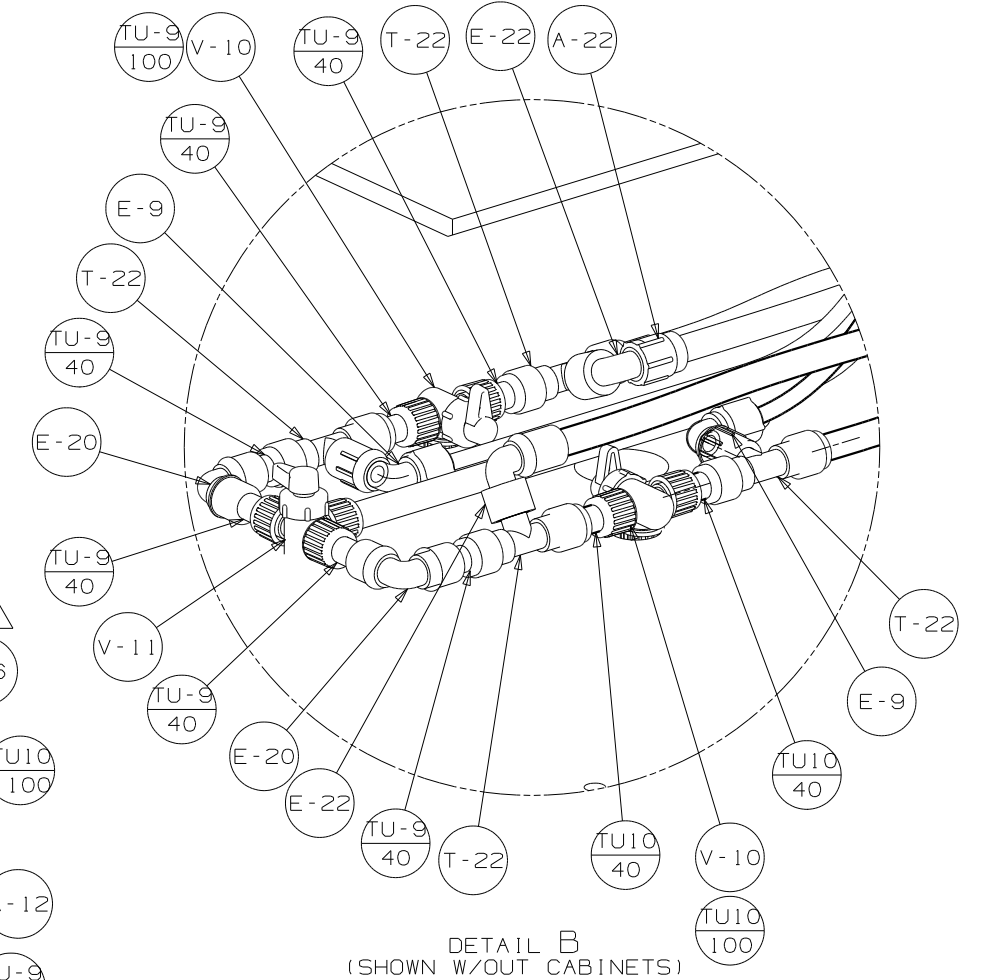
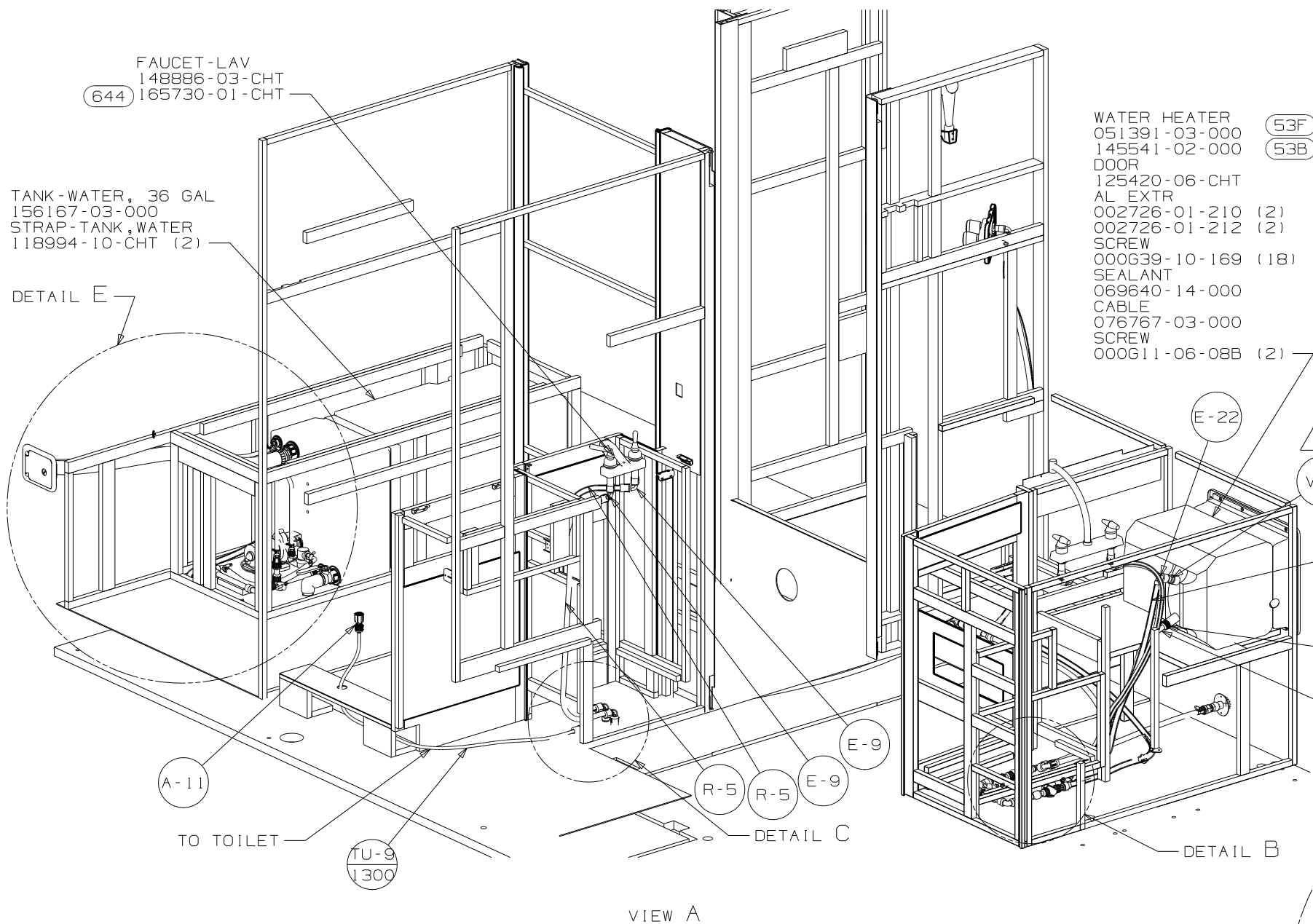
- 8 NOT USED WITH (64R).
- 7 ADD PIPE WRAP (LADDER SCRAP 110157-02-000) INSULATION.
- 6 ADD TEFLON TAPE 010405-03-000.
- 5 ADD TEFLON TAPE 010405-02-000.
- 4 ADD TEFLON TAPE 010405-01-000.

- 3. ALL TUBING TO BE SECURED AT 1200 INTERVALS MAXIMUM WITH CLAMP 10495-01-000 AND SCREW G67-10-12B OR EQUIVALENT.
- 2. TUBING TO BE INSTALLED WITH SUFFICIENT SLOPE TO PROVIDE DRAINAGE TO NEAREST VALVE.
- 1. PLASTIC FITTINGS TO BE SEALED WITH SEALANT 84456-01-000.

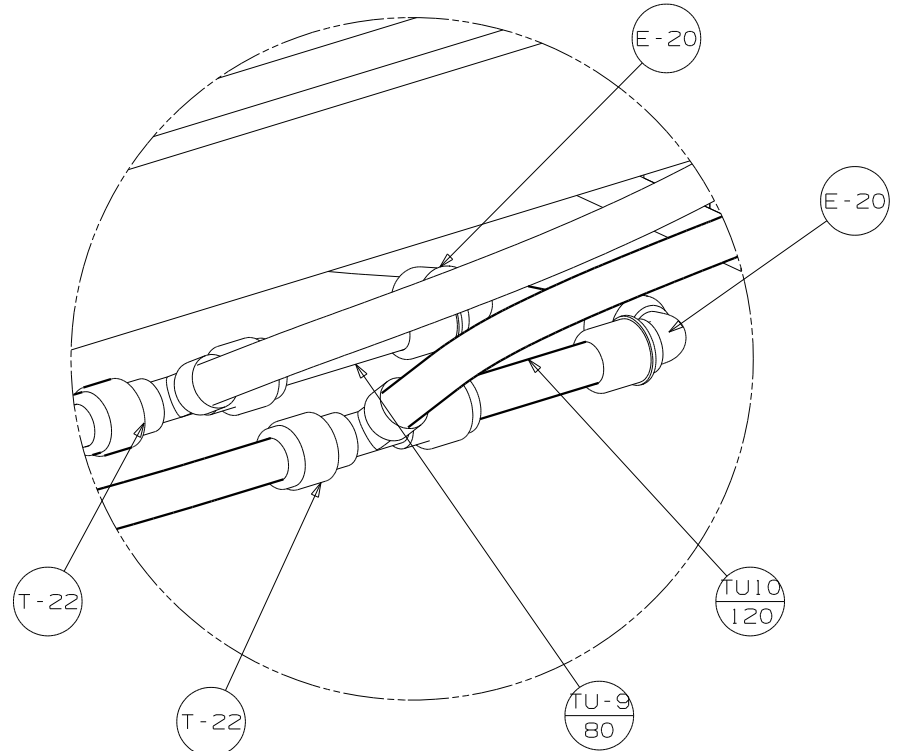
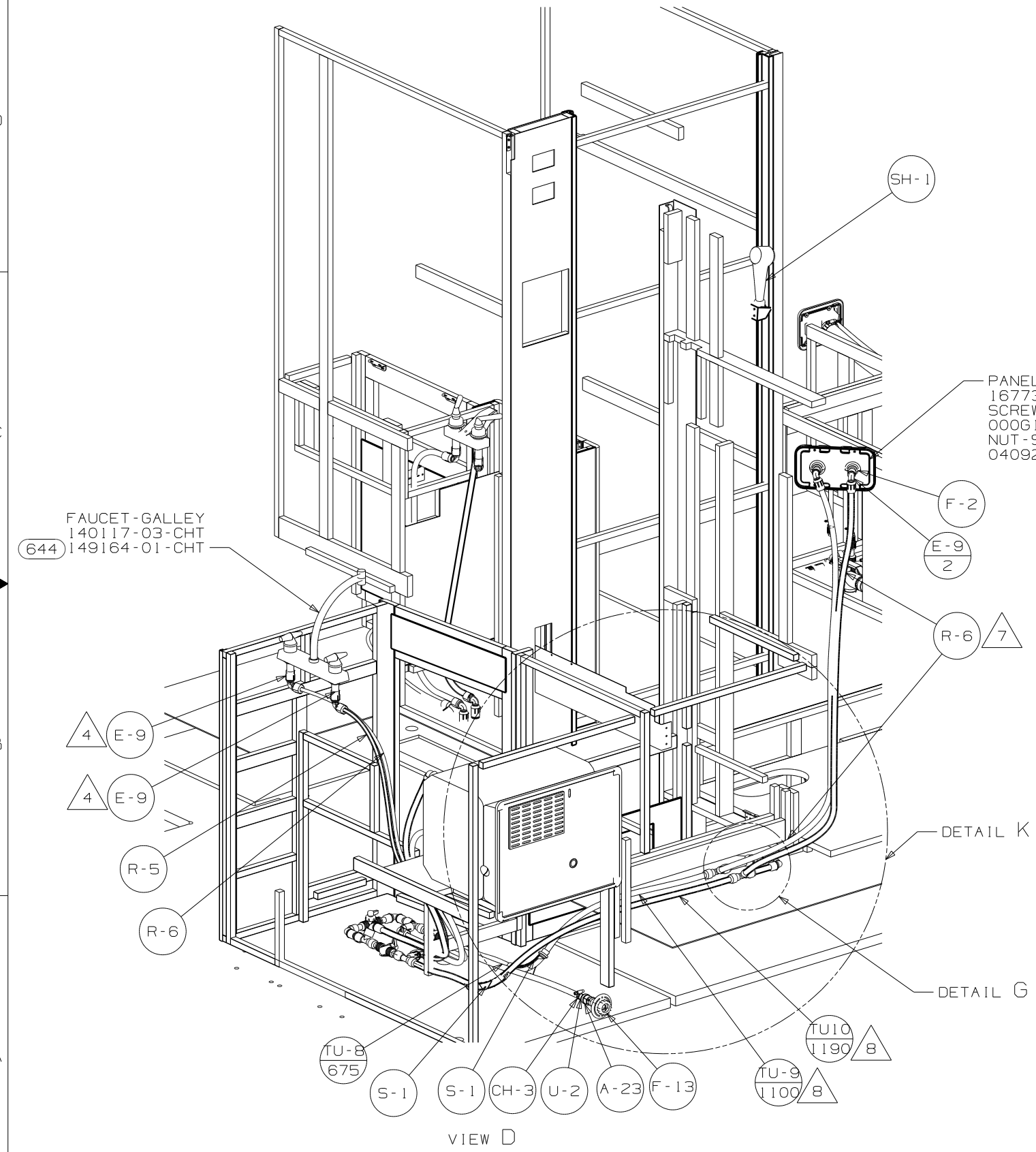
NOTES:

WINNEBAGO		COPYRIGHT 2010 WINNEBAGO INDUSTRIES, INC.	
DFTR	ORIG. DATE	ALL DIMENSIONS ARE IN MILLIMETERS	
CHKR		FIRST USED	
P.E.		10 229T	
M.E.		UNSPECIFIED TOLERANCES ARE:	
DSNR		WHOLE DIM (X) : 3	
		ONE-PLACE (X.X) : 1.5	
		TWO-PLACE (X.XX) : 0.50	
		ANGLE : 1°	
THIRD ANGLE PROJECTION		MATERIAL:	
DO NOT SCALE DRAWING		REFER TO ES0018 FOR FASTENER TIGHTENING GUIDELINES	
TITLE: WATER SYSTEM INSTL			
SHEET 1 OF 4	PART NO	171051	REV
REF:	1 2/22/2010		

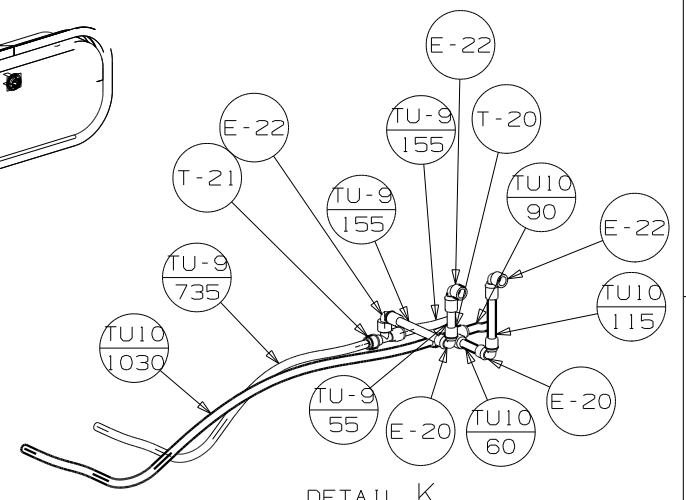
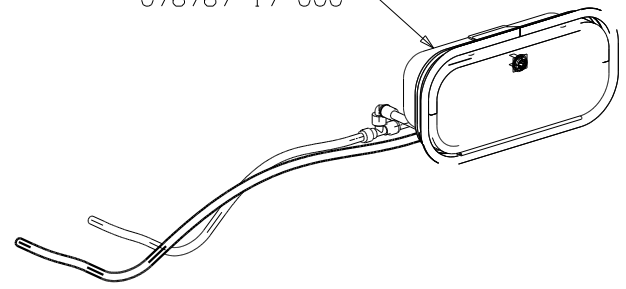
(X-X)
FOR
WATER
CALLOUTS
SEE DWG NO
116230-01-000



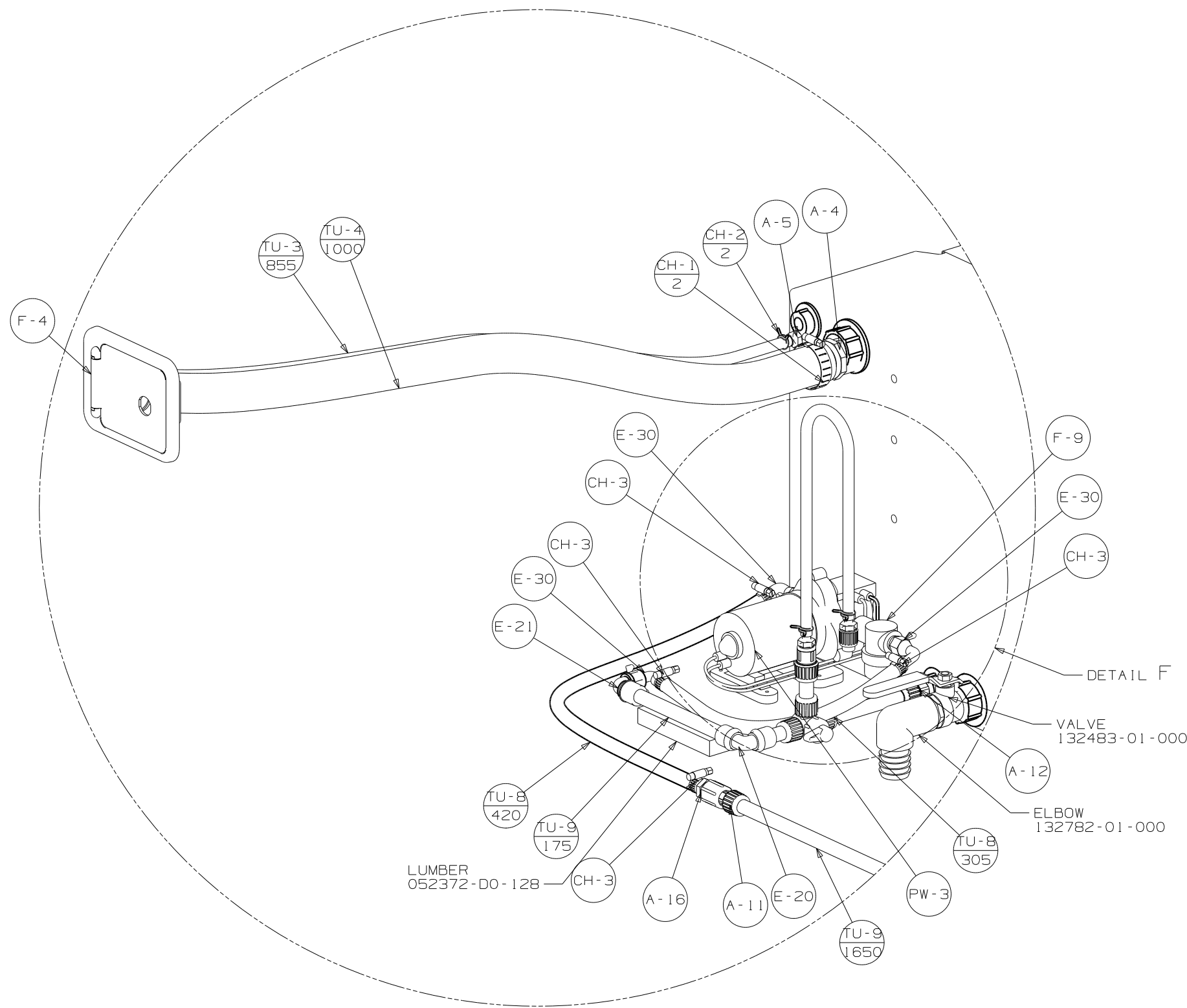
FIRST USED	10 229T
TITLE	DO NOT SCALE DRAWING
SHEET 2	171051
PART NO	171051
REV	



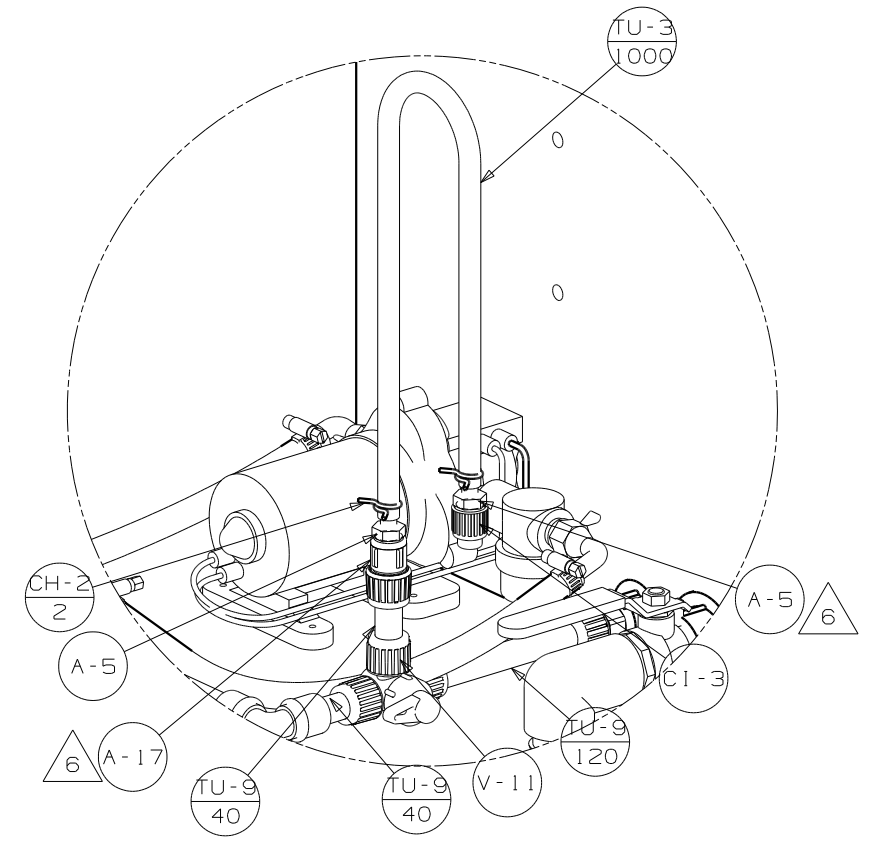
- COMPARTMENT ASM-SHOWER (64T)
- 155264-09-XXX
 - 155264-07-XXX (64V)
 - EXTR-ANGLE 113140-51-002 (2)
 - CABLE 076767-17-000



FIRST USED	10 229T
TITLE	DO NOT SCALE DRAWING
SHEET 3	PART NO 171051 REV



DETAIL E
(SHOWN W/OUT CABINETS & FLOOR)



DETAIL F
(SHOWN W/OUT CABINETS & FLOOR)

FIRST USED	10 229T
DO NOT SCALE DRAWING	
TITLE:	WATER SYSTEM INSTL
SHEET 4	PART NO 171051 REV